

1 **Effects of acoustic periodicity and intelligibility on the neural oscillations in response to**  
2 **speech**  
3

4  
5  
6  
7 **Kurt Steinmetzger<sup>a)\*</sup> & Stuart Rosen<sup>a)</sup>**  
8

9  
10 <sup>a)</sup> Speech, Hearing and Phonetic Sciences, UCL, Chandler House, 2 Wakefield St, London  
11  
12 WC1N 1PF, United Kingdom  
13

14  
15  
16  
17 \* Author to whom correspondence should be addressed. Electronic mail:  
18

19 [kurt.steinmetzger.12@ucl.ac.uk](mailto:kurt.steinmetzger.12@ucl.ac.uk)  
20  
21  
22  
23  
24  
25  
26  
27  
28  
29  
30  
31  
32  
33  
34  
35  
36  
37  
38  
39  
40  
41  
42  
43  
44  
45  
46  
47  
48  
49  
50  
51  
52  
53  
54  
55  
56  
57  
58  
59  
60  
61  
62  
63  
64  
65

## Abstract

1  
2  
3 Although several studies have investigated neural oscillations in response to acoustically  
4 degraded speech, it is still a matter of debate which neural frequencies reflect speech  
5 intelligibility. Part of the problem is that effects of acoustics and intelligibility have so far not  
6 been considered independently. In the current electroencephalography (EEG) study the  
7 amount of acoustic periodicity (i.e. the amount of time the stimulus sentences were voiced)  
8 was manipulated, while using the listeners' spoken responses to control for differences in  
9 intelligibility. Firstly, the total EEG power changes in response to completely aperiodic  
10 (noise-vocoded) speech and speech with a natural mix of periodicity and aperiodicity were  
11 almost identical, while an increase in theta power (5–6.3 Hz) and a trend for less beta power  
12 (11–18 Hz) were observed in response to completely periodic speech. These two effects are  
13 taken to indicate an information processing conflict caused by the unnatural acoustic  
14 properties of the stimuli, and that the subjects may have internally rehearsed the sentences as  
15 a result of this. Secondly, we separately investigated effects of intelligibility by sorting the  
16 trials in the periodic condition according to the listeners' spoken responses. The comparison  
17 of the intelligible trials, largely unintelligible trials, as well as completely unintelligible  
18 spectrally rotated speech revealed that the total EEG power in the delta band (1.7–2.7 Hz)  
19 was markedly increased during the second half of the intelligible sentences, which suggests  
20 that delta oscillations are an indicator of successful speech understanding.  
21  
22  
23  
24  
25  
26  
27  
28  
29  
30  
31  
32  
33  
34  
35  
36  
37  
38  
39  
40  
41  
42  
43  
44  
45  
46

47 **Keywords:** EEG; speech; delta; theta; intelligibility; periodicity  
48  
49  
50  
51  
52  
53  
54  
55  
56  
57  
58  
59  
60  
61  
62  
63  
64  
65

## 1. Introduction

In order to shed light on the underlying neural mechanisms and cognitive processes involved when attempting to understand spoken speech, a growing number of magneto- and electroencephalographic (M/EEG) studies focusses on the time-frequency properties of the neural signals rather than traditional waveform analyses (for reviews see Giraud & Poeppel, 2012; Weisz & Obleser, 2014). The current experiment adds to existing knowledge by investigating effects of acoustics and intelligibility separately, two factors that usually vary together when speech signals are acoustically manipulated. Specifically, we manipulated the amount of acoustic periodicity, while controlling for differences in intelligibility, and vice versa. In the context of speech, periodicity denotes that a sound is produced by the periodic vibrations of the vocal folds, resulting in voiced speech with a pitch corresponding to the vibration rate. Unvoiced speech sounds, in contrast, emanate from constrictions in the vocal tract and have aperiodic fluctuations in energy, leading to a noisy sound quality and the absence of a pitch.

A popular speech processing technique that has been used in the neurosciences (e.g. Davis & Johnsrude, 2003; Obleser & Weisz, 2012; Peelle et al., 2013; Scott et al., 2000) as well as in psychoacoustic studies concerned with the simulation of cochlear implants (e.g. Qin & Oxenham, 2003; Schoof et al., 2013; Shannon et al., 1995), is noise-vocoding (henceforth referred to as the *aperiodic* condition). By filtering the unprocessed input speech into a specified number of frequency bands, it allows the spectral resolution of the synthesised output speech to be varied in a controlled manner, a feature that is closely related to speech intelligibility. At the same time, using noise as speech source results in a loss of the natural mix of voiced and voicelessness, and consequently also any voice pitch information, making it resemble whispered speech.

1  
2  
3  
4  
5  
6  
7  
8  
9  
10  
11  
12  
13  
14  
15  
16  
17  
18  
19  
20  
21  
22  
23  
24  
25  
26  
27  
28  
29  
30  
31  
32  
33  
34  
35  
36  
37  
38  
39  
40  
41  
42  
43  
44  
45  
46  
47  
48  
49  
50  
51  
52  
53  
54  
55  
56  
57  
58  
59  
60  
61  
62  
63  
64  
65

Nevertheless, our previous behavioural work (Steinmetzger & Rosen, 2015) has shown that preserving periodicity information in a vocoder (henceforth the *mixed* condition) does not lead to improved intelligibility rates. This suggests that periodicity information, despite its salience, is a redundant cue, at least in non-tonal languages and quiet listening conditions. The first question the current study addresses, is thus whether EEG time-frequency responses are similarly unaffected by the absence of any source periodicity.

To enable a more comprehensive investigation of the effects of periodicity, we included a third processing condition in which the same speech materials were synthesised with a completely periodic source (henceforth the *periodic* condition). Acoustically this condition is in fact closer to natural speech, which is mostly voiced (Dellwo, et al., 2007; Fourcin, 2010), than aperiodic noise-vocoded speech. However, because natural speech does not contain periodic sounds with much energy in the frequency region above 4 kHz, it sounds very unnatural. Additionally, periodicity is such a salient cue that it obscures weaker cues such as intensity differences, thereby making the information transmitted contradictory. For unvoiced fricatives like /s/ and /ʃ/, for example, aperiodic high-frequency energy is missing and replaced by periodic energy, which makes it difficult to identify these sounds. Consequently, periodic speech has substantially lower intelligibility rates than the other two conditions (Ardoint, et al., 2014; Steinmetzger & Rosen, 2015).

In order to control for this expected difference in intelligibility, the single trials were sorted according to the spoken responses of the participants. This approach was also chosen to enable the direct comparison of intelligible and unintelligible trials in the periodic condition. Consequently, the current study also provides the opportunity to investigate how the EEG time-frequency responses are affected by the intelligibility of the speech materials in the absence of any acoustic differences. This approach is akin to studies generating a pop-out effect by presenting the same stimulus materials twice, first without any additional

1 information and then again after providing a written transcript (Sohoglu, et al., 2012) or the  
2 unprocessed recording (Millman, et al., 2015), but avoids any predictive top-down  
3 processing.  
4  
5

6  
7 In addition to the acoustically matched unintelligible trials, the current study included  
8 completely unintelligible spectrally rotated speech as a second control condition (henceforth  
9 the *rotated* condition). Rotated speech has a similar spectro-temporal complexity as unrotated  
10 speech and has been used in several of the studies mentioned above (e.g. Becker et al., 2013;  
11 Peelle et al., 2013; Scott et al., 2000). Yet, apart from not being a precise acoustic match, the  
12 obvious meaninglessness casts doubts on whether it is indeed an adequate control condition.  
13  
14  
15  
16  
17  
18  
19  
20

21  
22 Importantly, in contrast to the event-related potentials (ERPs), the EEG time-  
23 frequency analyses in the current paper were not assumed to be affected by the perception of  
24 a voice pitch. Direct cortical recordings and MEG experiments have shown that the presence  
25 of a pitch coincides with increased high gamma power (>80 Hz; e.g. Griffiths et al., 2010;  
26 Sedley et al., 2012). However, due to potential muscle artefacts and the low signal strength  
27 when recorded with cortical EEG, we did not use these frequencies in the current analysis.  
28  
29 Moreover, functional magnetic resonance imaging (fMRI) signals, which fluctuate at rates of  
30 less than .5 Hz (He & Raichle, 2009), have been shown to be larger for signals with a pitch  
31 (e.g. Norman-Haignere et al., 2013; Patterson et al., 2002). Yet, frequencies below .5 Hz  
32 similarly lie outside the possible frequency range of EEG time-frequency analyses, because  
33 they would require excessively long baseline and stimulus windows.  
34  
35  
36  
37  
38  
39  
40  
41  
42  
43  
44  
45  
46  
47

48  
49 Based on the results of Strauß and colleagues (2014a), who have recently reported  
50 increased theta activity (here 3–7 Hz) in a left-lateralised fronto-temporal network for so-  
51 called ambiguous pseudo-words in an auditory word recognition task, we expected increased  
52 theta power in the periodic condition. The pseudo-words used by Strauß, et al. (2014a) were  
53 characterised by a wrong core vowel, making them resemble the periodic condition in the  
54  
55  
56  
57  
58  
59  
60  
61  
62  
63  
64  
65

1 current study to some extent. Theta oscillations have also been associated with the storage of  
2 sequentially presented verbal information in working memory and the phonological loop  
3 (Roux & Uhlhaas, 2014). Based on this idea, Strauß, et al. (2014a) suggested that subjects  
4 may have internally rehearsed the unusual pseudo-words in order to classify them as words or  
5 non-words. More generally, this effect was taken to indicate an information processing  
6 conflict (Botvinick et al., 2001, 2004), although studies eliciting response conflicts in non-  
7 speech tasks, for example by using the Stroop paradigm, have usually reported mid-frontal  
8 theta power increases (Cohen & Donner, 2013; Hanslmayr, et al., 2008).

19 A recent theoretical approach has linked increased alpha power (~7–13 Hz) to the  
20 selective inhibition of brain areas that are not currently task relevant (Jensen & Mazaheri,  
21 2010). Applied to speech perception, it has been proposed that alpha oscillations might be  
22 actively enhanced in order to cope with a demanding task, particularly listening to speech in  
23 the presence of background noise (Obleser, et al., 2012; Strauß, et al., 2014b; Wöstmann, et  
24 al., 2015). For words presented in quiet listening conditions, on the other hand, alpha activity  
25 was found to be increasingly suppressed with higher intelligibility levels (Becker, et al.,  
26 2013; Obleser & Weisz, 2012). However, in these studies the intelligibility of the mostly  
27 noise-vocoded stimuli varied along with their acoustic properties (i.e. the number of  
28 frequency bands in the vocoder) and hence also the subjective listening effort, which is  
29 similarly thought to depend on the degree of acoustic degradation (Obleser & Weisz, 2012;  
30 Wöstmann, et al., 2015). Sorting the trials in the periodic condition according to the spoken  
31 behavioural responses provided the opportunity to test whether there is indeed a direct  
32 relation between alpha suppression and speech intelligibility.

## 2. Material and methods

### 2.1 Participants

Eighteen normal-hearing right-handed subjects (8 females, mean age = 21.6 years, SD = 2.3 years) took part in the study. All participants were native speakers of British English and had audiometric thresholds of less than 20 dB HL at frequencies between 125 and 8000 Hz. All subjects gave written consent and the study was approved by the UCL research ethics committee.

### 2.2 Stimuli

The stimulus materials used in this experiment were recordings of the IEEE sentences (Rothausler, et al., 1969) spoken by an adult male Southern British English talker with a mean F0 of 121.5 Hz that were cut at zero-crossings right before sentence onset and normalised to a common root-mean-square (RMS) level. The IEEE sentence corpus consists of 72 lists with 10 sentences each and is characterized by similar phonetic content and difficulty across the lists, as well as an overall low semantic predictability. Every sentence contains five keywords (nouns, verbs, or adjectives; e.g. *The birch canoe slid on the smooth planks.*).

All stimulus materials were processed prior to the experiment using a channel vocoder implemented in MATLAB (Mathworks, Natick, MA). For all three vocoding conditions (aperiodic, mixed, and periodic) the original recordings of the IEEE sentences were first band-pass filtered into eight bands using zero phase-shift sixth-order Butterworth filters. The filter spacing was based on equal basilar membrane distance (Greenwood, 1990) across a frequency range of .1–8 kHz (upper filter cut-offs in Hz: 242, 460, 794, 1307, 2094, 3302, 5155, 8000; filter centre frequencies in Hz: 163, 339, 609, 1023, 1658, 2633, 4130, 6426). The output of each filter was full-wave rectified and low-pass filtered at 30 Hz (zero phase-

1 shift fourth-order Butterworth) to extract the amplitude envelope. The low cut-off value was  
2 chosen in order to ensure that no temporal periodicity cues were present in the aperiodic  
3 condition.  
4  
5

6  
7 In order to synthesise aperiodic speech, the envelope of each individual band was  
8 multiplied with a broadband white noise carrier. In the mixed condition, the envelope of each  
9 band was also multiplied with a broadband white noise, but only in time windows where the  
10 original speech was unvoiced. Sections that were voiced in the original recordings were  
11 synthesised by multiplying the envelopes with a pulse train following the natural F0 contour.  
12 The individual pulses had a duration of one sample point, i.e. about 23  $\mu$ s at a sampling rate  
13 of 44.1 kHz. The F0 contours of the original sentences were extracted using ProsodyPro  
14 version 4.3 (Xu, 2013) implemented in PRAAT (Boersma & Weenink, 2013), with the F0  
15 extraction sampling rate set to 100 Hz. The resulting F0 contours were corrected manually  
16 where necessary and then used to determine the distance between the individual pulses of the  
17 pulse train sources. Based on the original intermittent F0 contours, we also produced artificial  
18 continuous F0 contours by interpolation through unvoiced sections and periods of silence.  
19 These continuous F0 contours were used to produce the pulse train sources for the periodic  
20 condition.  
21  
22  
23  
24  
25  
26  
27  
28  
29  
30  
31  
32  
33  
34  
35  
36  
37  
38  
39  
40

41 Finally, in all three vocoding conditions, the eight sub-band signals were again band-  
42 pass filtered using the same filters as in the analysis stage of the process. Before the  
43 individual bands were summed together, the output of each band was adjusted to the same  
44 RMS level as found in the original recordings.  
45  
46  
47  
48  
49  
50

51 Spectrally rotated speech was produced using a technique introduced by Blesser  
52 (1972) and implemented in MATLAB. Here, the waveforms of the mixed condition described  
53 above were first multiplied with an 8 kHz sinusoid, resulting in a spectral rotation around the  
54 midpoint frequency of 4 kHz. Note, that this procedure also renders the rotated speech  
55  
56  
57  
58  
59  
60  
61  
62  
63  
64  
65



1 inharmonic, since the frequencies of the component tones will not be multiples of a particular  
2 F0 anymore. The rotated waveforms were then filtered (FFT-based FIR filter, order 256) to  
3 have the average UK long-term speech spectrum (Byrne, et al., 1994) and, finally, scaled to  
4 the same RMS level as the original waveforms in the mixed condition.  
5  
6  
7

8  
9 Figure 1 shows an unprocessed example sentence along with the same sentence  
10 processed in the four ways described.  
11  
12

13  
14  
15 *Figure 1 about here*  
16  
17

### 18 **2.3 Procedure**

19 Each participant listened to 80 aperiodic, 80 mixed, 160 periodic, and 80 rotated sentences.  
20  
21 There were twice as many trials in the periodic condition because we wanted to ensure a  
22 sufficient number of unintelligible trials. All 4 conditions were presented in blocks of 10  
23 sentences (i.e. 1 complete IEEE sentence list) and the order of the conditions and IEEE lists  
24 was randomised. Only the first 40 IEEE lists were used in the main experiment and none of  
25 the sentences was presented more than once. Participants were asked to repeat as many words  
26 as possible after every sentence. The verbal responses were logged by the experimenter  
27 before the next sentence was played and no feedback was given following the responses. The  
28 presentation of the stimuli and the logging of the responses was carried out using Presentation  
29 version 17.0 (Neurobehavioral Systems, Berkeley, USA).  
30  
31  
32  
33  
34  
35  
36  
37  
38  
39  
40  
41  
42  
43  
44  
45

46 Single trials consisted of a silent pre-stimulus interval with random duration (1.5–2.5  
47 s), a stimulus sentence (average duration = 2.04 s, SD = .24 s) followed by a silent interval of  
48 .25 s, a short beep sound signalling the participants to start responding, the spoken responses,  
49 and the subsequent logging of the responses by the experimenter.  
50  
51  
52  
53  
54  
55

56 Before being tested, the subjects were familiarised with the materials by listening to  
57 10 aperiodic, mixed, and periodic examples sentences each (IEEE lists 41–43). During the  
58  
59  
60  
61  
62  
63  
64  
65

1 familiarisation phase every sentence was directly followed by its unprocessed counterpart,  
2 and again followed by the processed sentence.  
3

4  
5 The main part of the experiment took about 70 minutes to complete and subjects were  
6 allowed to take breaks whenever they wished to. The experiment took place in a double-  
7 walled sound-attenuating and electrically-shielded booth, with the computer signal being fed  
8 through the wall onto a separate monitor. Participants sat in a comfortable reclining chair  
9 during EEG acquisition and told to not move their eyes during sentence presentation. The  
10 stimuli were converted with 16-bit resolution and a sampling rate of 22.05 kHz using a  
11 Creative Sound Blaster SB X-Fi sound card (Dublin, Ireland) and presented over Sennheiser  
12 HD650 headphones (Wedemark, Germany). The presentation level was about 71 dB SPL  
13 over a frequency range of .1–8 kHz as measured on an artificial ear (type 4153, Brüel & Kjær  
14 Sound & Vibration Measurement A/S, Nærum, Denmark).  
15  
16  
17  
18  
19  
20  
21  
22  
23  
24  
25  
26  
27  
28

## 29 **2.4 EEG recording and pre-processing**

30  
31  
32 The continuous EEG was recorded using a Biosemi ActiveTwo system (Amsterdam,  
33 Netherlands) with 61 Ag-AgCl scalp electrodes mounted on a cap according to the extended  
34 international 10-20 system. Four additional external electrodes were used to record the  
35 vertical and horizontal electrooculogram (EOG) by placing them on the outer canthus of each  
36 eye as well as above and below the left eye. Two more external electrodes were used to  
37 record the signal from the left and right mastoids. EEG signals were recorded with a sampling  
38 rate of 1024 Hz and an analogue anti-aliasing low-pass filter with a cut-off frequency of 200  
39 Hz.  
40  
41  
42  
43  
44  
45  
46  
47  
48  
49  
50  
51

52 The EEG data were processed offline using EEGLAB 12.0.2.5b (Delorme & Makeig,  
53 2004). The waveforms were first down-sampled to 512 Hz, re-referenced to the mean of the  
54 two mastoids, and then filtered (zero-phase shift Hamming-windowed sinc FIR filter, order  
55 3380, using the firfilt plugin version 1.5.3.) with a .1 Hz high-pass filter and a 100 Hz low-  
56  
57  
58  
59  
60  
61  
62  
63  
64  
65

1 pass filter. An independent component analysis (ICA) was used to remove artefacts caused by  
2 eye blinks, eye movements, and muscular activity. Epochs ranging from -1000–3000 ms  
3  
4 around sentence onset were extracted and rejected if amplitudes exceeded  $\pm 120 \mu\text{V}$ , if linear  
5 trends exceeded  $120 \mu\text{V}$  in a 500 ms gliding window, or if the trial was lying outside a  $\pm 6$  SD  
6  
7 range (for single channels) and  $\pm 3$  SD (for all channels) of the mean voltage probability  
8  
9 distribution or the mean distribution of kurtosis values. On average 73.5% (294/400, SD =  
10  
11  
12  
13  
14  
15  
16  
17  
18  
19  
20  
21  
22  
23  
24  
25  
26  
27  
28  
29  
30  
31  
32  
33  
34  
35  
36  
37  
38  
39  
40  
41  
42  
43  
44  
45  
46  
47  
48  
49  
50  
51  
52  
53  
54  
55  
56  
57  
58  
59  
60  
61  
62  
63  
64  
65

## 2.5 EEG time-frequency analysis

In order to ensure the same signal-to-noise ratio in each condition, all analyses in the present paper are based on matched trial numbers across conditions. For each individual participant, the number of trials was determined by the condition with the fewest trials, with excess trials in the other conditions omitted randomly.

The pre-processed EEG data were first sorted according to the spoken responses. For the analysis of periodicity only trials with all five keywords correct were considered in order to control for differences in intelligibility. This resulted in an average of 35.7 trials in each of the 4 processing conditions (SD = 9.7, range = 23–56). For the analysis of intelligibility, trials in the periodic condition with all five keywords correct were compared to trials with maximally two correct keywords (i.e. less than half of the sentence correctly repeated). Three participants with less than 10 unintelligible trials were excluded due to the low signal-to-noise ratio of the data. The remaining 15 participants (8 females) had an average number of 21.7 trials per condition (SD = 7.3, range = 14–35).

The time-frequency decomposition of the pre-processed and sorted data was conducted by computing the event-related spectral perturbation (ERSP) as implemented in EEGLAB. The ERSP is a measure of the relative change in power from baseline to stimulus period (Makeig, 1993). For each time-frequency point in the stimulus window, the spectral

1 power is divided by the average power of the respective frequency bin in the baseline  
2 window and transformed into a dB value. The data were analysed from 1–30 Hz in 200 log-  
3 spaced frequency steps by convolving them with a set of Morlet wavelets, whose widths  
4 increased linearly with frequency from 1–15 cycles. This resulted in an analysis window  
5 ranging from -442.4–2442.4 ms around sentence onset. For the sake of simplicity, the  
6 rounded values -500–2500 ms will be used henceforth. Within this window, the ERSP for  
7 each of the 200 frequency bins was calculated 100 times, resulting in a decomposition step  
8 size of about 29 ms. In order to limit the overlap between pre- and post-stimulus activity due  
9 to the windowing of the time-frequency analysis, the baseline window lasted from -1000–  
10 100 ms (Shahin et al., 2008, 2009). All analyses in the current study are based on estimates of  
11 the total EEG power. In order to obtain the total (i.e. time- but not necessarily phase-locked)  
12 EEG power, the ERSP was computed for the single trial data and averaged afterwards  
13 (Tallon-Baudry & Bertrand, 1999).  
14  
15  
16  
17  
18  
19  
20  
21  
22  
23  
24  
25  
26  
27  
28  
29  
30

31 Statistical differences between conditions were examined using non-parametric  
32 cluster-based permutation tests (Maris & Oostenveld, 2007). Firstly, it was tested whether  
33 there was a linear relationship between the amount of periodicity (aperiodic vs. mixed vs.  
34 periodic) or intelligibility (rotated vs. unintelligible periodic vs. intelligible periodic) and the  
35 total EEG power by computing separate two-sided regression *t*-tests for dependent samples at  
36 each electrode. In both cases, the whole stimulus window (0–2500 ms) and the complete  
37 array of analysed neural frequencies (1–30 Hz) was included in the test. Individual time-  
38 frequency sample points were considered to belong to a cluster if their *F*-values fell below  
39 the alpha level of .05, if the same was true for at least 3 neighbouring channels, and if they  
40 were connected to other significant sample points surrounding them. This procedure provides  
41 a weak control for false positive findings due to multiple comparisons by only allowing  
42 effects that are coherent in time, frequency, and space. Next, the individual *F*-values within a  
43  
44  
45  
46  
47  
48  
49  
50  
51  
52  
53  
54  
55  
56  
57  
58  
59  
60  
61  
62  
63  
64  
65

1 given cluster were summed to obtain the cluster-level statistic. The significance probability of  
2 a cluster was then assessed by comparing this cluster-level statistic to the one obtained after  
3 randomly re-allocating the individual trials to the conditions. This step was repeated 1000  
4 times and the final cluster  $p$ -value was then determined by the proportion of these Monte  
5 Carlo iterations in which the cluster-level statistic was exceeded. The same statistical  
6 technique was also applied when two conditions were compared, but in this case two-sided  $t$ -  
7 tests were used in order to determine the  $p$ -values of the individual time-frequency sample  
8 points. In all statistical tests reported in this paper, an effect was considered to be significant  
9 if the cluster  $p$ -value was smaller than .05.  
10  
11  
12  
13  
14  
15  
16  
17  
18  
19  
20  
21

### 22 **3. Results**

#### 23 **3.1 Behavioural data**

24  
25  
26  
27  
28  
29 The averaged spoken behavioural responses obtained after each trial (Fig. 2) show that the  
30 aperiodic and mixed conditions are equally intelligible (88.8% and 90.0% correct keywords  
31 on average;  $t(17) = -1.60, p = .13$ ), while the rotated condition is completely unintelligible  
32 (0%), and periodic speech is slightly less intelligible (77.4%) than aperiodic ( $t(17) = -8.42, p$   
33  $< .001$ ) and mixed speech ( $t(17) = -11.60, p < .001$ ). Furthermore, we compared the responses  
34 to the first and the second half of the trials in the periodic condition and found no significant  
35 differences (77.8% and 77.0%;  $t(17) = .70, p = .49$ ), indicating that there were no learning  
36 effects over the course of the 160 trials.  
37  
38  
39  
40  
41  
42  
43  
44  
45  
46  
47  
48

49 *Figure 2 about here*  
50  
51

#### 52 **3.2 Periodicity**

53  
54  
55  
56 The total EEG power changes in response to the fully intelligible trials (all five keywords  
57 correctly repeated) in the aperiodic, mixed, and periodic conditions are shown in Fig. 3. The  
58  
59  
60  
61  
62  
63  
64  
65

1  
2  
3  
4  
5  
6  
7  
8  
9  
10  
11  
12  
13  
14  
15  
16  
17  
18  
19  
20  
21  
22  
23  
24  
25  
26  
27  
28  
29  
30  
31  
32  
33  
34  
35  
36  
37  
38  
39  
40  
41  
42  
43  
44  
45  
46  
47  
48  
49  
50  
51  
52  
53  
54  
55  
56  
57  
58  
59  
60  
61  
62  
63  
64  
65

periodic condition was found to substantially deviate from the other two conditions, which had a very similar response pattern.

Firstly, as shown by the spectrogram plots in the upper part of Fig. 3, there was a power increase in the upper delta and theta region during the middle part of the stimulus window in the periodic condition. A cluster-based regression *t*-test including all three conditions confirmed that there was a linear positive relation between the amount of periodicity in the stimuli and the EEG power in this time-frequency region. This effect was most pronounced at electrode F7, but included 4 more electrodes in the left temporal scalp region (FT7, FC5, T7, and C5). These 5 electrodes all showed a consistent significant effect in time-frequency-electrode space from about 5–6.3 Hz and 845–1320 ms ( $p = .045$ ). This time-frequency window is indicated by the black boxes in the spectrogram plots and the corresponding scalp distributions are shown in the lower part of Fig. 3. Subsequent pairwise comparisons revealed a significant difference between the aperiodic and periodic conditions in the same time-frequency-electrode region ( $p = .047$ ), but no additional effects (see supplementary materials).

*Figure 3 about here*

Secondly, there was a trend for less low beta power (11–18 Hz) in the periodic condition throughout the stimulus window. This observation was confirmed by a post-hoc analysis in which the whole stimulus window was statistically examined, but the frequencies range was reduced to 10–20 Hz. As indicated by the uncorrected *p*-values, this trend was strongest over the central scalp region, particularly at electrode Cz, and present throughout the stimulus window. As can be told from both the spectrogram plots at electrode Cz and the corresponding scalp maps, there was again hardly any difference between the aperiodic and mixed conditions.

Figure 4 about here

### 3.3 Intelligibility

The total EEG power changes for completely unintelligible rotated speech, largely unintelligible periodic speech (trials with maximally two out of five keywords correct, henceforth referred to as the *unintelligible periodic* condition), and fully intelligible periodic speech (all five keywords correct, henceforth the *intelligible periodic* condition) are shown in Fig. 5. There was a general trend for greater power changes when the speech was more intelligible. In particular, the neural response in the rotated condition was very small, apart from an initial burst of activity following the acoustic onset of the sentences. Unintelligible and intelligible periodic speech, in contrast, showed sustained activity in the theta band (~4–7 Hz) throughout the stimulus window. Crucially, intelligible periodic speech also led to a substantial increase in delta power (1–4 Hz) during the second half of the stimulus window, which was absent in both the rotated and unintelligible periodic conditions.

A cluster-based regression *t*-test including all three conditions confirmed that there was a linear positive relation between the intelligibility of the stimuli and the EEG power in the delta and theta region during the second half of the stimulus window. This effect was most pronounced at electrode Fz, but included 7 more electrodes in the frontal scalp region (Fpz, Fp2, AF3, AFz, AF4, F3, and F1). These 8 electrodes all showed a more or less consistent significant effect in time-frequency-electrode space from about 2.4–5 Hz and 1400–2500 ms ( $p = .01$ ). This time-frequency window is indicated by the black boxes in the spectrogram plots and the corresponding scalp distributions are shown in the lower part of Fig. 5.

Figure 5 about here

1 Subsequent pairwise comparisons showed that this cluster consisted of two overlapping  
2 smaller clusters, one in the theta band and another in the delta band (Fig. 6). Firstly, the direct  
3 comparison of the rotated and intelligible periodic conditions returned a cluster from about 3–  
4 4.9 Hz and 1100–2500 ms with a slightly left-lateralised frontal location ( $p = .01$ ). This effect  
5 was strongest at electrode F3 and in total included 11 electrodes showing a more or less  
6 consistent significant difference in time-frequency-electrode space (Fp1, Fpz, Fp2, AF3, AFz,  
7 AF4, F3, F1, Fz, FC1, and FCz). Secondly, when comparing the unintelligible and intelligible  
8 periodic conditions directly, another cluster with a slightly right-lateralised frontal  
9 distribution was obtained. This cluster had a similar temporal extension, but did not overlap  
10 in frequency with the previous one ( $\sim 1.7$ – $2.7$  Hz/1200–2300 ms;  $p = .019$ ). Here, the  
11 strongest effect was observed at electrode F6 and in total 7 electrodes showed a consistent  
12 significant difference (Fpz, Fp2, AF4, Fz, F2, F4, and F6).  
13  
14  
15  
16  
17  
18  
19  
20  
21  
22  
23  
24  
25  
26  
27  
28

29 *Figure 6 about here*  
30

### 31 **3.4 Acoustic comparison of the unintelligible and intelligible periodic conditions**

32  
33  
34  
35

36 In order to test whether there were any substantial acoustic differences between the  
37 unintelligible and intelligible periodic conditions, we ran a number of additional acoustic  
38 analyses. Firstly, both the average duration of the sentences (means = 2.05/2.04 s, SDs =  
39 .22/.26, medians = 2.04/2.01,  $t(173) = .34$ ,  $p = .73$ ) and the average F0 frequencies of the  
40 concatenated sentences in the two conditions (means = 119.33/119.01 Hz, SDs =  
41 25.42/24.20, medians = 115.46/116.18,  $t(173) = -.42$ ,  $p = .68$ ) were found to show little  
42 difference. The F0 frequencies were initially extracted with a sampling rate of 100 Hz, but  
43 down-sampled to .56 Hz for statistical testing to obtain the same degrees of freedom as for  
44 the comparison of sentence duration.  
45  
46  
47  
48  
49  
50  
51  
52  
53  
54  
55  
56  
57  
58  
59  
60  
61  
62  
63  
64  
65



1  
2  
3  
4  
5  
6  
7  
8  
9  
10  
11  
12  
13  
14  
15  
16  
17  
18  
19  
20  
21  
22  
23  
24  
25  
26  
27  
28  
29  
30  
31  
32  
33  
34  
35  
36  
37  
38  
39  
40  
41  
42  
43  
44  
45  
46  
47  
48  
49  
50  
51  
52  
53  
54  
55  
56  
57  
58  
59  
60  
61  
62  
63  
64  
65

Secondly, we compared the power spectra of the two concatenated sets of sentences (computed using Welch's method, FFT size = 1024 samples, sampling rate = 22.05 kHz). The left panel of Fig. 7 shows that the spectra are virtually identical, which is underlined by a very high Pearson's correlation coefficient of the frequency bins closest to the centre frequencies of the eight vocoder bands ( $r = .99, p < .001$ ). Lastly, we computed the average modulation spectra of the amplitude envelopes of all the sentence in the two conditions using the front-end of the mr-sEPSM speech intelligibility model (Jørgensen, et al., 2013). The modulation spectra were averaged over all 22 gammatone audio filters of the model, resulting in the simple line plot shown in the right panel of Fig. 7. The high correlation coefficient of the nine modulation filter centre frequencies across conditions ( $r = .99, p < .001$ ) again confirms that there is little difference between the two conditions.

*Figure 7 about here*

#### 4. Discussion

The present study sought to identify effects of acoustic periodicity and intelligibility in the EEG time-frequency responses to acoustically presented sentences. We thereby attempted to overcome the limitation that acoustic factors and intelligibility have not been examined independently in previous studies. Firstly, it was found that despite considerable acoustic differences, the total responses in the aperiodic and mixed conditions were almost identical. In contrast, the total EEG power in the periodic condition differed substantially from the other two conditions, even after controlling for the lower intelligibility. Differences were observed in the theta and low beta bands. Secondly, completely unintelligible rotated speech and largely unintelligible as well as intelligible periodic speech we compared. Here, we observed hardly any power changes in the rotated condition, apart from the acoustic onset

1 response, but a substantial increase in delta power during the second half of the intelligible  
2 periodic sentences, when compared to their acoustically similar unintelligible counterparts.  
3  
4

#### 5 **4.1 Periodicity**

6

7  
8 The increase in theta power in the periodic condition agrees well with the results of Strauß, et  
9 al. (2014a), who found significantly more theta activity in a left-lateralised fronto-temporal  
10 network for ambiguous pseudo-words. Our results thus corroborate the idea that increased  
11 theta activity in this region is an indicator of response conflicts in auditory speech tasks. As  
12 suggested by Roux and Uhlhaas (2014), enhanced theta power in the context of speech tasks  
13 may indicate that verbal information is kept in the phonological loop, where the materials are  
14 sub vocally rehearsed. In line with this idea, the power decrease in the low beta range in the  
15 periodic condition seems to be a mu rhythm de-synchronisation, often observed before  
16 imagined or real movements (e.g. Cohen & Donner, 2013; Pfurtscheller et al., 1997;  
17 Wisniewski et al., 2015). It thus appears that both effects that distinguish the periodic speech  
18 from the other two conditions stand in relation to each other. Importantly, the participants  
19 correctly repeated every stimulus sentence in each of the three conditions included in the  
20 current analysis. Hence, the effect cannot be a result of motor preparation *per se*, but must be  
21 due to specific processes associated with the periodic condition.  
22  
23  
24  
25  
26  
27  
28  
29  
30  
31  
32  
33  
34  
35  
36  
37  
38  
39  
40  
41

42 Previous studies have reported that more intelligible words lead to a greater  
43 suppression of alpha activity (Becker, et al., 2013; Obleser & Weisz, 2012). In line with these  
44 findings, we have observed no differences in the alpha range between the aperiodic, mixed,  
45 and periodic conditions after controlling for differences in intelligibility. On the other hand,  
46 we did also not observe a suppression of alpha activity. The absence of this effect is in fact  
47 the only notable difference between the EEG spectrogram plot of the 8-channel aperiodic (i.e.  
48 noise-vocoded) condition in the study of Obleser and Weisz (2012) and the one in the current  
49 study. This might be due to the fact that we have used the relatively long and difficult IEEE  
50  
51  
52  
53  
54  
55  
56  
57  
58  
59  
60  
61  
62  
63  
64  
65

1 sentences, and not single words. Although the alpha power level did not appear to decrease  
2 towards the onset of the sentences (see Fig. 3), it may have been lowered throughout the pre-  
3 stimulus window, indicating a state of ‘anticipatory attention’ preceding a demanding task  
4 (Klimesch, 2012). However, since we presented the conditions in blocks of ten sentences (i.e.  
5 whole IEE sentence lists), subjects could also form expectancies regarding the upcoming  
6 stimulus, which may have caused the alpha power level to remain relatively stable between  
7 the baseline and stimulus windows.  
8  
9

10  
11  
12  
13  
14  
15  
16  
17 In summary, the very similar EEG responses in the aperiodic and mixed conditions  
18 suggests the existence of a default response pattern to speech signals that are relatively easy  
19 to understand. A deviation from this pattern, as in the case of the periodic condition, in turn  
20 may indicate that a speech signal sounds unnatural and interferes with normal processing.  
21  
22  
23  
24  
25  
26

## 27 **4.2 Intelligibility**

28  
29  
30 Spectrally rotated speech was introduced to neuroscience in an attempt to provide an  
31 adequate non-speech analogue for intelligible speech (Rosen & Iverson, 2007; Scott, et al.,  
32 2000). However, despite the speech-like acoustic properties, we did not observe any  
33 substantial total or evoked activity in the rotated condition, apart from the initial acoustic  
34 onset response. The largest part of the signal thus resembled a recording of silence. This  
35 suggests that the attempt to mimic the acoustic properties of speech in an unintelligible  
36 control condition may in fact be needless, at least in M/EEG studies. In contrast, the neural  
37 response in the unintelligible periodic condition, which included trials with up to two  
38 correctly repeated keywords out of five, resembled its intelligible counterpart much more and  
39 additionally provides the benefit of being acoustically matched. In particular, only the two  
40 periodic conditions showed activity in the theta band throughout the stimulus window.  
41  
42  
43  
44  
45  
46  
47  
48  
49  
50  
51  
52  
53  
54  
55  
56

57 The main finding when comparing the total EEG power in the three conditions was  
58 the pronounced increase in delta power in the intelligible periodic condition. Given that there  
59  
60  
61  
62  
63  
64  
65

1 is no acoustic event that could have triggered this effect, it shows a surprisingly sharp onset at  
2 around 1000 ms after sentence onset and was present throughout the remainder of the  
3 stimulus window. As the average duration of the sentences was 2.04 s, the onset of this effect  
4 coincides with the beginning of the second half of the sentences. In line with the rule that the  
5 lower the frequency of a neural oscillation, the wider its distribution (e.g. Buzsáki &  
6 Draguhn, 2004), this effect was observed at the vast majority of electrodes, but only reached  
7 significance level in the frontal scalp region. Although the phase of delta oscillations has  
8 been shown to entrain to tone sequences (Lakatos, et al., 2005), and the detection of small  
9 loudness differences of tones has been reported to depend on delta power (Herrmann, et al.,  
10 2016), the power of delta oscillations has so far not been associated with speech  
11 intelligibility. Importantly, delta power increases towards the end of the stimulus window  
12 were observed in all three conditions in the analysis of periodicity (see Fig. 3), which  
13 demonstrates that this effect is not confined to the unnatural sounding periodic condition.  
14 Clearly, further research is needed to explore the exact relation between delta oscillations and  
15 speech intelligibility, particularly its time course. It is noteworthy that the average word  
16 duration of clearly articulated English is about 400 ms (i.e. 2.5 Hz; Hazan & Baker, 2011),  
17 and thus falls right into the middle of the delta band. However, since the increase in delta  
18 power was only observed during the second half of the intelligible sentences, it does not  
19 appear to be associated with the intelligibility of the individual words. Instead, one may  
20 speculate that this effect reflects the understanding of the meaning of the sentences as a  
21 whole.

22  
23  
24  
25  
26  
27  
28  
29  
30  
31  
32  
33  
34  
35  
36  
37  
38  
39  
40  
41  
42  
43  
44  
45  
46  
47  
48  
49  
50  
51 Finally, we did again not observe any significant differences in the alpha band,  
52 although Fig. 5 shows that alpha power after sentence onset is slightly increased in the  
53 unintelligible periodic condition. This trend resembles the finding that alpha power is  
54 enhanced when speech signals are embedded in background noise, which was suggested to  
55  
56  
57  
58  
59  
60  
61  
62  
63  
64  
65

1 reflect the attempt to cope with demanding listening conditions (e.g. Strauss et al., 2014b;  
2 Wilsch et al., 2015). However, it appears that the target speech needs to be both difficult to  
3 understand, as is the case for the unintelligible periodic condition, and be presented in noise  
4 in order to lead to pronounced alpha power changes. Our data hence suggest that for speech  
5 presented in quiet, there is no strong association between alpha power and speech  
6 intelligibility, after controlling for acoustic differences.  
7  
8  
9  
10  
11  
12  
13

## 14 **5. Conclusion**

15  
16  
17  
18 By manipulating the amount of source periodicity in the materials, the present study has  
19 shown that total EEG power changes in response to speech do not reflect acoustic stimulus  
20 properties as such, but the perceptual effects of these properties. Even after controlling for  
21 differences in intelligibility, responses to fully periodic speech, an artificial condition that  
22 makes it difficult to identify the individual speech sounds, deviated markedly from the two  
23 other conditions with an entirely aperiodic or mixed source excitation. The neural responses  
24 in the latter two conditions, on the other hand, were very similar, despite their acoustic  
25 differences. In a second analysis, EEG power changes to unintelligible and intelligible speech  
26 were compared. Firstly, the very sparse neural response to spectrally rotated speech casts  
27 strong doubts on whether it is a suitable unintelligible control condition in M/EEG studies.  
28 Secondly, the direct comparison of the unintelligible and intelligible trials in the periodic  
29 condition revealed an increase in delta power during the second half of the sentences. The  
30 current results thus suggest that delta oscillations are a possible neural correlate of successful  
31 speech understanding.  
32  
33  
34  
35  
36  
37  
38  
39  
40  
41  
42  
43  
44  
45  
46  
47  
48  
49  
50  
51

## 52 **Acknowledgements**

53  
54  
55  
56  
57  
58  
59  
60  
61  
62  
63  
64  
65

1 This project has been funded with support from the European Commission under Contract  
2 FP7-PEOPLE-2011-290000. We thank Johannes Zaar and Torsten Dau for their advice and  
3  
4 the code of the mr-sEPSM model.  
5  
6

## 7 8 **References** 9

- 10  
11 Ardoint, M., Green, T., & Rosen, S. (2014). The intelligibility of interrupted speech depends  
12 upon its uninterrupted intelligibility. *J. Acoust. Soc. Am.*, *136*, EL275–EL280.  
13  
14 Becker, R., Pefkou, M., Michel, C. M., & Hervais-Adelman, A. G. (2013). Left temporal  
15 alpha-band activity reflects single word intelligibility. *Front. Syst. Neurosci.*, *7*,  
16 Article 121.  
17  
18 Blesser, B. (1972). Speech perception under conditions of spectral transformation: I. Phonetic  
19 characteristics. *J. Speech Hear. Res.*, *15*, 5–41.  
20  
21 Boersma, P., & Weenink, D. (2013). Praat: doing phonetics by computer [Computer  
22 program]. In (5.3.49 ed.).  
23  
24 Botvinick, M. M., Braver, T. S., Barch, D. M., Carter, C. S., & Cohen, J. D. (2001). Conflict  
25 monitoring and cognitive control. *Psychol. Rev.*, *108*, 624–652.  
26  
27 Botvinick, M. M., Cohen, J. D., & Carter, C. S. (2004). Conflict monitoring and anterior  
28 cingulate cortex: an update. *Trends Cogn. Sci.*, *8*, 539–546.  
29  
30 Buzsáki, G., & Draguhn, A. (2004). Neuronal oscillations in cortical networks. *Science*, *304*,  
31 1926–1929.  
32  
33 Byrne, D., Dillon, H., Tran, K., Arlinger, S., Wilbraham, K., Cox, R., Hagerman, B., Hetu,  
34 R., Kei, J., & Lui, C. (1994). An international comparison of long-term average  
35 speech spectra. *J. Acoust. Soc. Am.*, *96*, 2108–2120.  
36  
37 Cohen, M. X., & Donner, T. H. (2013). Midfrontal conflict-related theta-band power reflects  
38 neural oscillations that predict behavior. *J. Neurophysiol.*, *110*, 2752–2763.  
39  
40 Davis, M. H., & Johnsruide, I. S. (2003). Hierarchical processing in spoken language  
41 comprehension. *J. Neurosci.*, *23*, 3423–3431.  
42  
43 Dellwo, V., Fourcin, A., & Abberton, E. (2007). Rhythmical classification of languages  
44 based on voice parameters. In *Proceedings of the International Congress of Phonetic  
45 Sciences (ICPhS 2007)* (pp. 1129–1132). Saarbrücken, Germany.  
46  
47 Delorme, A., & Makeig, S. (2004). EEGLAB: an open source toolbox for analysis of single-  
48 trial EEG dynamics including independent component analysis. *J. Neurosci. Methods*,  
49 *134*, 9–21.  
50  
51 Fourcin, A. (2010). A note on voice timing and the evolution of connected speech. *Logoped.  
52 Phoniater. Vocology*, *35*, 74–80.  
53  
54 Giraud, A.-L., & Poeppel, D. (2012). Cortical oscillations and speech processing: emerging  
55 computational principles and operations. *Nat. Neurosci.*, *15*, 511–517.  
56  
57 Greenwood, D. D. (1990). A cochlear frequency-position function for several species – 29  
58 years later. *J. Acoust. Soc. Am.*, *87*, 2592–2605.  
59  
60 Griffiths, T. D., Kumar, S., Sedley, W., Nourski, K. V., Kawasaki, H., Oya, H., Patterson, R.  
61 D., Brugge, J. F., & Howard, M. A. (2010). Direct recordings of pitch responses from  
62 human auditory cortex. *Curr. Biol.*, *20*, 1128–1132.  
63  
64 Hanslmayr, S., Pastötter, B., Bäuml, K.-H., Gruber, S., Wimber, M., & Klimesch, W. (2008).  
65 The electrophysiological dynamics of interference during the Stroop task. *J. Cognit.  
Neurosci.*, *20*, 215–225.

- 1 Hazan, V., & Baker, R. (2011). Acoustic-phonetic characteristics of speech produced with  
2 communicative intent to counter adverse listening conditions. *J. Acoust. Soc. Am.*,  
3 *130*, 2139–2152.
- 4 He, B. J., & Raichle, M. E. (2009). The fMRI signal, slow cortical potential and  
5 consciousness. *Trends Cogn. Sci.*, *13*, 302–309.
- 6 Herrmann, B., Henry, M. J., Haegens, S., & Obleser, J. (2016). Temporal expectations and  
7 neural amplitude fluctuations in auditory cortex interactively influence perception.  
8 *Neuroimage*, *124*, 487–497.
- 9 Jensen, O., & Mazaheri, A. (2010). Shaping functional architecture by oscillatory alpha  
10 activity: gating by inhibition. *Front. Hum. Neurosci.*, *4*, Article 186.
- 11 Jørgensen, S., Ewert, S. D., & Dau, T. (2013). A multi-resolution envelope-power based  
12 model for speech intelligibility. *J. Acoust. Soc. Am.*, *134*, 436–446.
- 13 Klimesch, W. (2012). Alpha-band oscillations, attention, and controlled access to stored  
14 information. *Trends Cogn. Sci.*, *16*, 606–617.
- 15 Lakatos, P., Shah, A. S., Knuth, K. H., Ulbert, I., Karmos, G., & Schroeder, C. E. (2005). An  
16 oscillatory hierarchy controlling neuronal excitability and stimulus processing in the  
17 auditory cortex. *J. Neurophysiol.*, *94*, 1904–1911.
- 18 Makeig, S. (1993). Auditory event-related dynamics of the EEG spectrum and effects of  
19 exposure to tones. *Electroencephalogr. Clin. Neurophysiol.*, *86*, 283–293.
- 20 Maris, E., & Oostenveld, R. (2007). Nonparametric statistical testing of EEG-and MEG-data.  
21 *J. Neurosci. Methods*, *164*, 177-190.
- 22 Millman, R. E., Johnson, S. R., & Prendergast, G. (2015). The role of phase-locking to the  
23 temporal envelope of speech in auditory perception and speech intelligibility. *J.*  
24 *Cognit. Neurosci.*, 533–545.
- 25 Norman-Haignere, S., Kanwisher, N., & McDermott, J. H. (2013). Cortical pitch regions in  
26 humans respond primarily to resolved harmonics and are located in specific tonotopic  
27 regions of anterior auditory cortex. *J. Neurosci.*, *33*, 19451–19469.
- 28 Obleser, J., & Weisz, N. (2012). Suppressed alpha oscillations predict intelligibility of speech  
29 and its acoustic Details. *Cereb. Cortex*, *22*, 2466–2477.
- 30 Obleser, J., Wöstmann, M., Hellbernd, N., Wilsch, A., & Maess, B. (2012). Adverse listening  
31 conditions and memory load drive a common alpha oscillatory network. *J. Neurosci.*,  
32 *32*, 12376–12383.
- 33 Patterson, R. D., Uppenkamp, S., Johnsrude, I. S., & Griffiths, T. D. (2002). The processing  
34 of temporal pitch and melody information in auditory cortex. *Neuron*, *36*, 767–776.
- 35 Peelle, J. E., Gross, J., & Davis, M. H. (2013). Phase-locked responses to speech in human  
36 auditory cortex are enhanced during comprehension. *Cereb. Cortex*, *23*, 1378–1387.
- 37 Pfurtscheller, G., Stancak, A., & Edlinger, G. (1997). On the existence of different types of  
38 central beta rhythms below 30 Hz. *Electroencephalogr. Clin. Neurophysiol.*, *102*,  
39 316–325.
- 40 Qin, M. K., & Oxenham, A. J. (2003). Effects of simulated cochlear-implant processing on  
41 speech reception in fluctuating maskers. *J. Acoust. Soc. Am.*, *114*, 446–454.
- 42 Rosen, S., & Iverson, P. (2007). Constructing adequate non-speech analogues: what is special  
43 about speech anyway? *Developmental Science*, *10*, 165–168.
- 44 Rothauser, E. H., Chapman, N. D., Guttman, N., Nordby, K. S., Silbiger, H. R., Urbanek, G.  
45 E., & Weinstock, M. (1969). IEEE recommended practice for speech quality  
46 measurements. *IEEE Trans. on Audio and Electroacoustics*, *17*, 225–246.
- 47 Roux, F., & Uhlhaas, P. J. (2014). Working memory and neural oscillations: alpha–gamma  
48 versus theta–gamma codes for distinct WM information? *Trends Cogn. Sci.*, *18*, 16–  
49 25.
- 50  
51  
52  
53  
54  
55  
56  
57  
58  
59  
60  
61  
62  
63  
64  
65

- 1 Schoof, T., Green, T., Faulkner, A., & Rosen, S. (2013). Advantages from bilateral hearing in  
2 speech perception in noise with simulated cochlear implants and residual acoustic  
3 hearing. *J. Acoust. Soc. Am.*, *133*, 1017–1030.
- 4 Scott, S. K., Blank, C. C., Rosen, S., & Wise, R. J. (2000). Identification of a pathway for  
5 intelligible speech in the left temporal lobe. *Brain*, *123*, 2400–2406.
- 6 Sedley, W., Teki, S., Kumar, S., Overath, T., Barnes, G. R., & Griffiths, T. D. (2012).  
7 Gamma band pitch responses in human auditory cortex measured with  
8 magnetoencephalography. *Neuroimage*, *59*, 1904–1911.
- 9 Shahin, A. J., Picton, T. W., & Miller, L. M. (2009). Brain oscillations during semantic  
10 evaluation of speech. *Brain Cogn.*, *70*, 259–266.
- 11 Shahin, A. J., Roberts, L. E., Chau, W., Trainor, L. J., & Miller, L. M. (2008). Music training  
12 leads to the development of timbre-specific gamma band activity. *Neuroimage*, *41*,  
13 113–122.
- 14 Shannon, R. V., Zeng, F.-G., Kamath, V., Wygonski, J., & Ekelid, M. (1995). Speech  
15 recognition with primarily temporal cues. *Science*, *270*, 303–304.
- 16 Sohoglu, E., Peelle, J. E., Carlyon, R. P., & Davis, M. H. (2012). Predictive top-down  
17 integration of prior knowledge during speech perception. *J. Neurosci.*, *32*, 8443–8453.
- 18 Steinmetzger, K., & Rosen, S. (2015). The role of periodicity in perceiving speech in quiet  
19 and in background noise. *J. Acoust. Soc. Am.*, *138*, 3586–3599.
- 20 Strauß, A., Kotz, S. A., Scharinger, M., & Obleser, J. (2014a). Alpha and theta brain  
21 oscillations index dissociable processes in spoken word recognition. *Neuroimage*, *97*,  
22 387–395.
- 23 Strauß, A., Wöstmann, M., & Obleser, J. (2014b). Cortical alpha oscillations as a tool for  
24 auditory selective inhibition. *Front. Hum. Neurosci.*, *8*, Article 350.
- 25 Tallon-Baudry, C., & Bertrand, O. (1999). Oscillatory gamma activity in humans and its role  
26 in object representation. *Trends Cogn. Sci.*, *3*, 151–162.
- 27 Weisz, N., & Obleser, J. (2014). Synchronisation signatures in the listening brain: a  
28 perspective from non-invasive neuroelectrophysiology. *Hearing Res.*, *307*, 16–28.
- 29 Wilsch, A., Henry, M. J., Herrmann, B., Maess, B., & Obleser, J. (2015). Alpha Oscillatory  
30 Dynamics Index Temporal Expectation Benefits in Working Memory. *Cereb. Cortex*,  
31 *25*, 1938–1946.
- 32 Wisniewski, M. G., Thompson, E. R., Iyer, N., Estep, J. R., Goder-Reiser, M. N., &  
33 Sullivan, S. C. (2015). Frontal midline  $\theta$  power as an index of listening effort.  
34 *Neuroreport*, *26*, 94–99.
- 35 Wöstmann, M., Herrmann, B., Wilsch, A., & Obleser, J. (2015). Neural alpha dynamics in  
36 younger and older listeners reflect acoustic challenges and predictive benefits. *J.*  
37 *Neurosci.*, *35*, 1458–1467.
- 38 Xu, Y. (2013). ProsodyPro – A tool for large-scale systematic prosody analysis. In  
39 *Proceedings of Tools and Resources for the Analysis of Speech Prosody (TRASP*  
40 *2013)* (pp. 7–10). Aix-en-Provence, France.
- 41  
42  
43  
44  
45  
46  
47  
48  
49  
50  
51  
52  
53  
54  
55  
56  
57  
58  
59  
60  
61  
62  
63  
64  
65



1 Figure 1. Stimuli. Waveforms, wide-band spectrograms, and F0 contours for one example  
2 sentence (*Say it slowly but make it ring clear.*). A) The unprocessed version of the sentence  
3 and the same sentence processed to have B) an aperiodic source, C) a mixed source, D) a  
4 periodic source, or E) a mixed source and spectrally rotated. The four processed conditions  
5 (B–E) all have eight frequency bands, i.e. the same spectral resolution. The unprocessed  
6 version of the sentence in panel A) is shown for the purpose of comparison only.

7  
8  
9  
10  
11  
12  
13  
14 (*single-column fitting image, colour online only*)  
15  
16

17  
18  
19 Figure 2. Behavioural data. Boxplots showing the average proportion of correctly repeated  
20 keywords in each of the four processing conditions. The black horizontal lines in the boxplots  
21 indicate the median value. *n.s.* stands for non-significant and \*\*\* indicates a *p*-value < .001.

22  
23  
24  
25  
26  
27 (*single-column fitting image, colour online only*)  
28  
29  
30

31 Figure 3. Periodicity. Total EEG power changes relative to baseline for the fully intelligible  
32 trials in the aperiodic, mixed, and periodic conditions. The upper part of the figure shows  
33 spectrograms of EEG activity recorded at electrode F7. In the panel on the far right, time-  
34 frequency sample points with cluster-corrected *p*-values < .05 are shown in red. The scalp  
35 distributions of the significant time-frequency window indicated by the black boxes (~5–6.3  
36 Hz/845–1320 ms) are plotted in the lower part of the figure. Electrodes that are part of the  
37 significant cluster are shown as black dots and electrode F7, which showed the strongest  
38 effect, is indicated by a red dot.

39  
40  
41  
42  
43  
44  
45  
46  
47  
48  
49  
50  
51 (*two-column fitting image, colour online only*)  
52  
53  
54  
55

56 Figure 4. Periodicity post-hoc. Total EEG power changes relative to baseline for the fully  
57 intelligible trials in the aperiodic, mixed, and periodic conditions. The upper part of the figure

1 shows spectrograms of EEG activity recorded at electrode Cz. In the panel on the far right,  
2 time-frequency sample points with uncorrected  $p$ -values  $< .05$  are shown in red. The scalp  
3 distributions of the time-frequency window in which significant differences were observed  
4 (11–18 Hz/0–2500 ms) are plotted in the lower part of the figure. Electrode Cz, which  
5 showed the strongest effect, is indicated by a red dot.  
6  
7  
8  
9

10  
11  
12 *(two-column fitting image, colour online only)*  
13  
14  
15

16  
17 Figure 5. Intelligibility. Total EEG power changes relative to baseline for the completely  
18 unintelligible rotated condition, largely unintelligible trials in the periodic condition  
19 (maximally two out of five correctly repeated keywords), and intelligible trials in the periodic  
20 condition (all five keywords correctly repeated). The upper part of the figure shows  
21 spectrograms of EEG activity recorded at electrode Fz. In the panel on the far right, time-  
22 frequency sample points with cluster-corrected  $p$ -values  $< .05$  are shown in red. The scalp  
23 distributions of the significant time-frequency window indicated by the black boxes (~2.4–5  
24 Hz/1400–2500 ms) are plotted in the lower part of the figure. Electrodes that are part of the  
25 significant cluster are shown as black dots and electrode Fz, which showed the strongest  
26 effect, is indicated by a red dot.  
27  
28  
29  
30  
31  
32  
33  
34  
35  
36  
37  
38  
39  
40

41 *(two-column fitting image, colour online only)*  
42  
43  
44  
45

46 Figure 6. Intelligibility pairwise comparisons. Pairwise statistical comparisons of the  
47 completely unintelligible rotated condition, largely unintelligible trials in the periodic  
48 condition (maximally two out of five correctly repeated keywords), and intelligible trials in  
49 the periodic condition (all five keywords correctly repeated). Time-frequency sample points  
50 with cluster-corrected  $p$ -values  $< .05$  are shown in red. The scalp distributions of the two  
51 significant time-frequency windows indicated by the black boxes (~3–4.9 Hz/1100–2500 ms  
52  
53  
54  
55  
56  
57  
58  
59  
60  
61  
62  
63  
64  
65

and ~1.7–2.7 Hz/1200–2300 ms) are plotted in the lower part of the figure. Electrodes that are part of the significant clusters are shown as black dots and electrodes F3 and F6, which showed the strongest effects, are indicated by red dots.

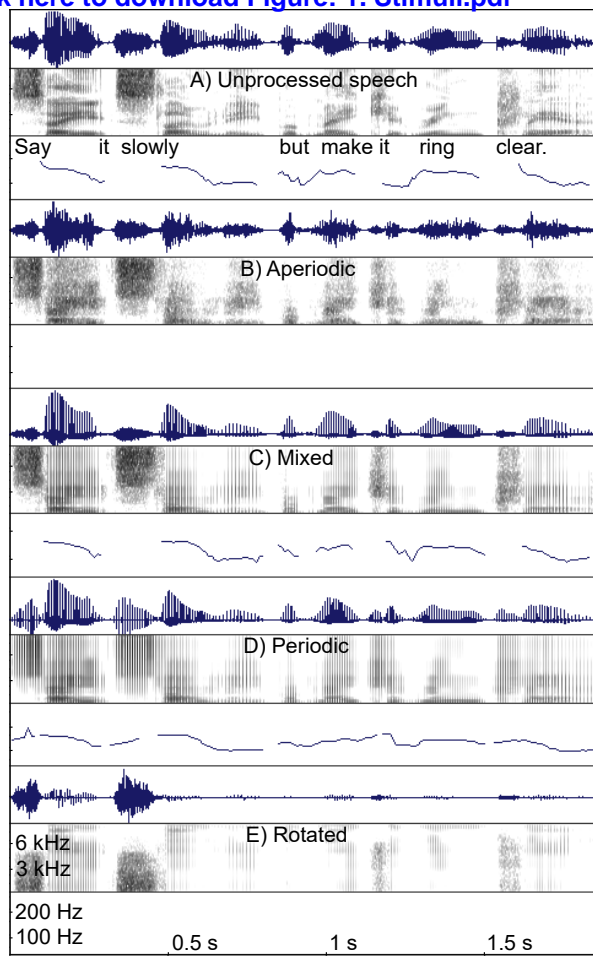
*(two-column fitting image, colour online only)*

Figure 7. Acoustic characteristics of the largely unintelligible (maximally two out of five correctly repeated keywords) and intelligible (all five keywords correctly repeated) trials in the periodic condition. The left panel shows the average power spectra, i.e. the stimulus power plotted as a function of audio frequency, and the right panel the average envelope modulation spectra, i.e. the stimulus power plotted as a function of envelope modulation frequency.

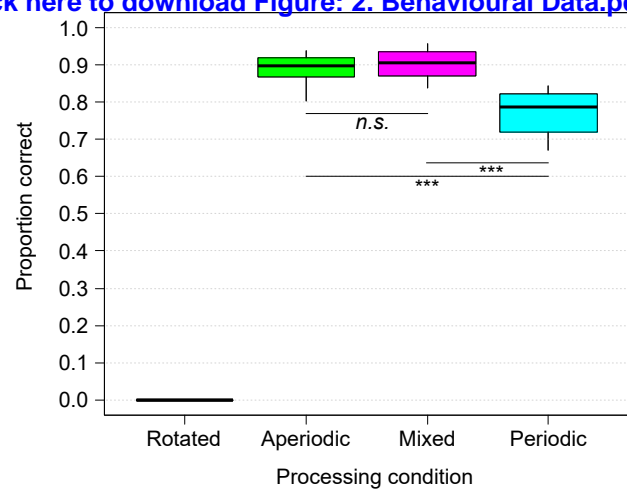
*(single-column fitting image, colour online only)*

Figure 1

[Click here to download Figure: 1. Stimuli.pdf](#)

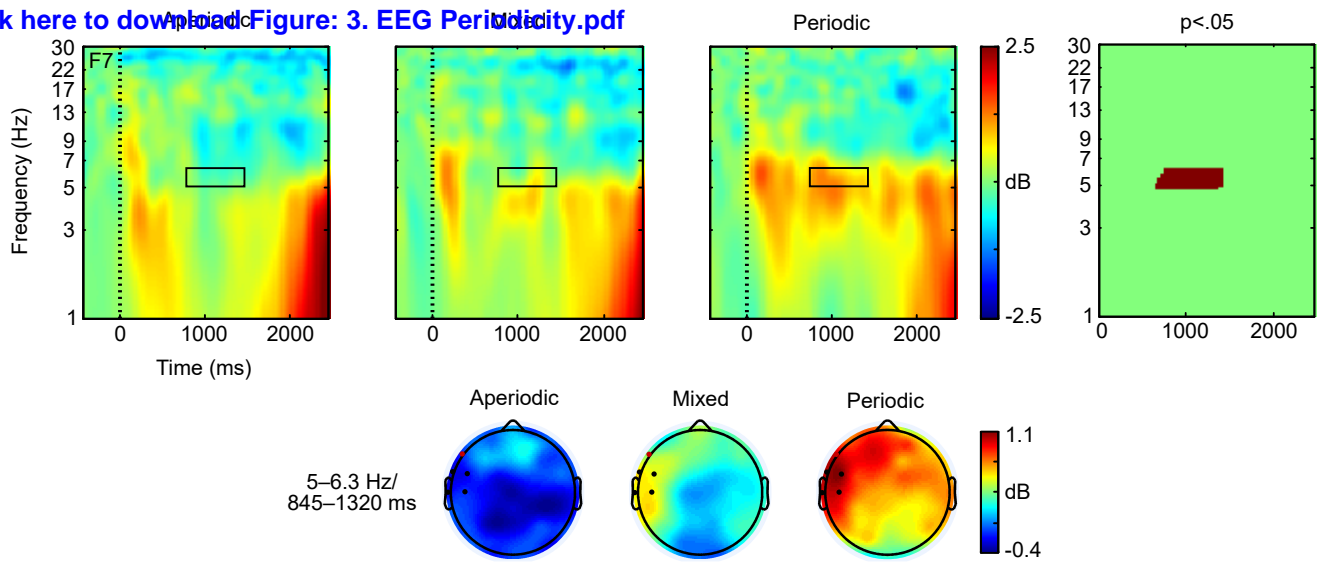


**Figure 2**  
[Click here to download Figure: 2. Behavioural Data.pdf](#)



**Figure 3**

[Click here to download Figure: 3. EEG Periodicity.pdf](#)



**Figure 4**

[Click here to download Figure: 4. EEG Periodicity Post-hoc Beta.pdf](#)

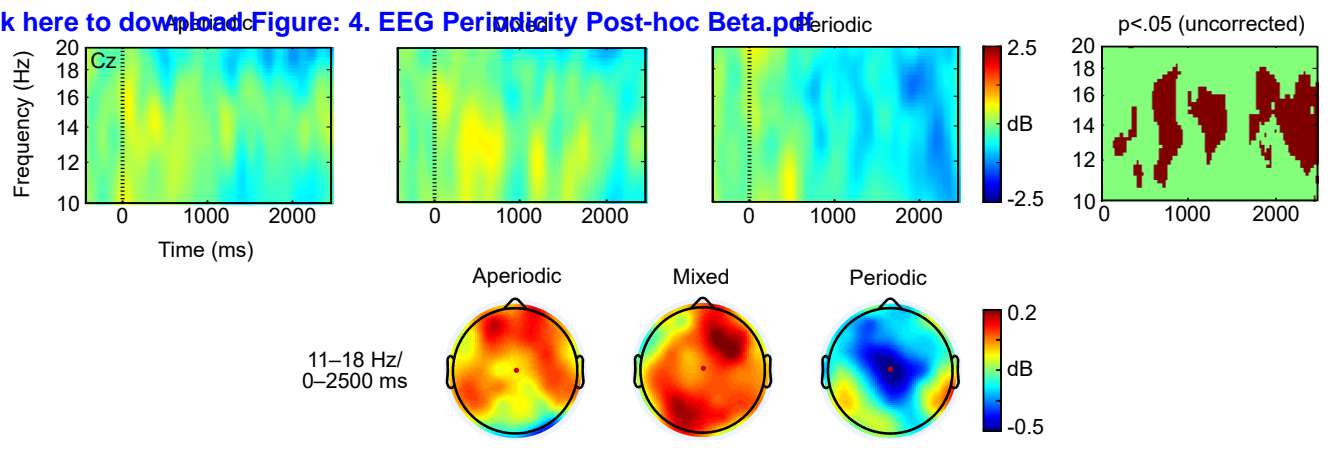


Figure 5

[Click here to download Figure: 5. EEG intelligibility.pdf](#)

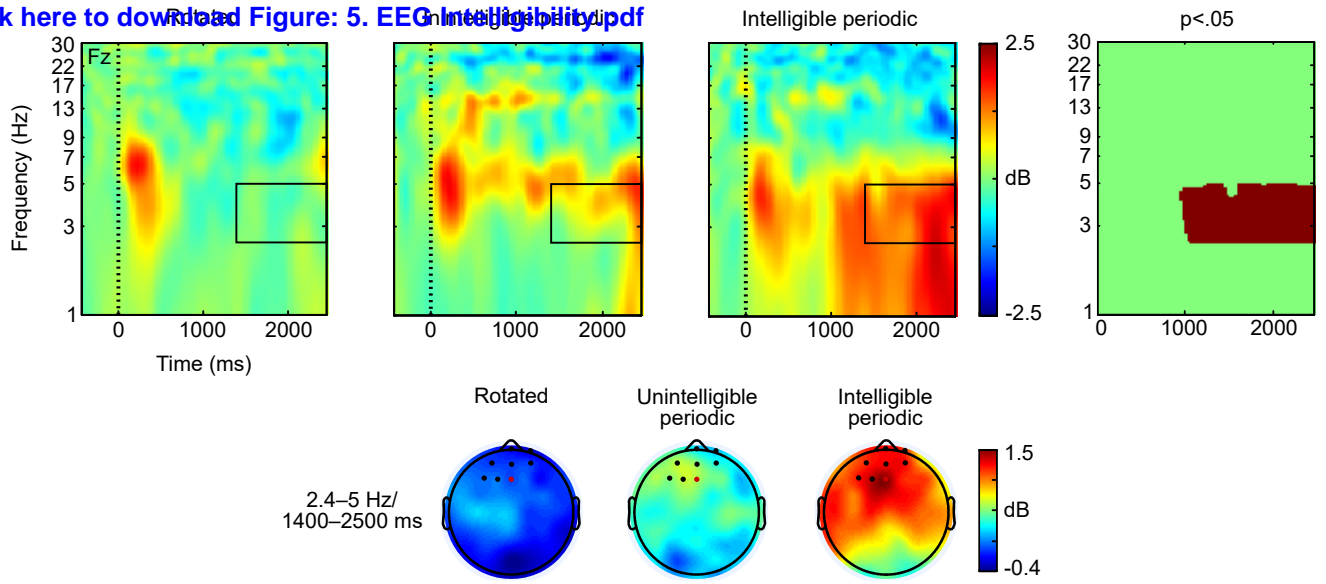




Figure 6

[Click here to download Figure 6. EEG Intelligibility Pairwise.pdf](#)

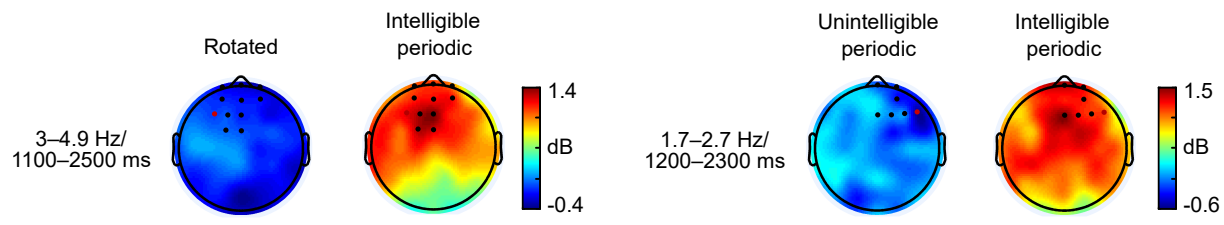
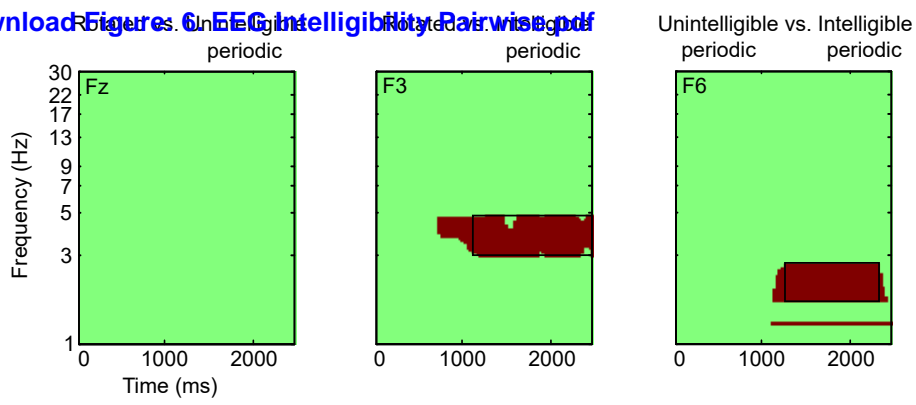
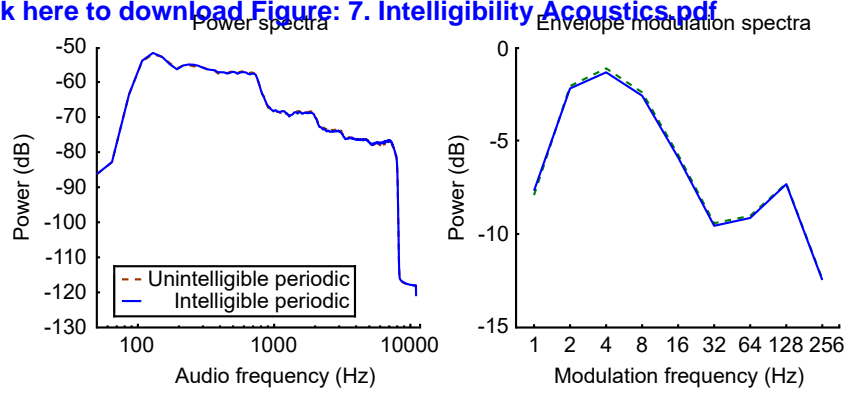


Figure 7

[Click here to download Figure: 7. Intelligibility Acoustics.pdf](#)



**Supplementary Material**

[Click here to download Supplementary Material: Supp. 3b. EEG Periodicity Pairwise.pdf](#)