

# RAB32 Ser71Arg in autosomal dominant Parkinson's disease: linkage, association, and functional analyses



Emil K Gustavsson\*, Jordan Follett\*, Joanne Trinh\*, Sandeep K Barodia, Raquel Real, Zhiyong Liu, Melissa Grant-Peters, Jesse D Fox, Silke Appel-Cresswell, A Jon Stoessl, Alex Rajput, Ali H Rajput, Roland Auer, Russel Tilney, Marc Sturm, Tobias B Haack, Suzanne Lesage, Christelle Tesson, Alexis Brice, Carles Vilariño-Güell, Mina Ryten, Matthew S Goldberg, Andrew B West, Michele T Hu, Huw R Morris, Manu Sharma, Ziv Gan-Or, Bedia Samanci, Pawel Lis, Maria Teresa Periñan, Rim Amouri, Samia Ben Sassi, Faycel Hentati, Global Parkinson's Genetics Program (GP2), Francesca Tonelli, Dario R Alessi, Matthew J Farrer



## Summary

**Background** Parkinson's disease is a progressive neurodegenerative disorder with multifactorial causes, among which genetic risk factors play a part. The RAB GTPases are regulators and substrates of LRRK2, and variants in the *LRRK2* gene are important risk factors for Parkinson's disease. We aimed to explore genetic variability in RAB GTPases within cases of familial Parkinson's disease.

**Methods** We did whole-exome sequencing in probands from families in Canada and Tunisia with Parkinson's disease without a genetic cause, who were recruited from the Centre for Applied Neurogenetics (Vancouver, BC, Canada), an international consortium that includes people with Parkinson's disease from 36 sites in 24 countries. 61 RAB GTPases were genetically screened, and candidate variants were genotyped in relatives of the probands to assess disease segregation by linkage analysis. Genotyping was also done to assess variant frequencies in individuals with idiopathic Parkinson's disease and controls, matched for age and sex, who were also from the Centre for Applied Neurogenetics but unrelated to the probands or each other. All participants were aged 18 years or older. The sequencing and genotyping findings were validated by case-control association analyses using bioinformatic data obtained from publicly available clinicogenomic databases (AMP-PD, GP2, and 100 000 Genomes Project) and a private German clinical diagnostic database (University of Tübingen). Clinical and pathological findings were summarised and haplotypes were determined. In-vitro studies were done to investigate protein interactions and enzyme activities.

**Findings** Between June 1, 2010, and May 31, 2017, 130 probands from Canada and Tunisia (47 [36%] female and 83 [64%] male; mean age 72.7 years [SD 11.7; range 38–96]; 109 White European ancestry, 18 north African, two east Asian, and one Hispanic) underwent whole-exome sequencing. 15 variants in RAB GTPase genes were identified, of which the *RAB32* variant c.213C>G (Ser71Arg) cosegregated with autosomal dominant Parkinson's disease in three families (nine affected individuals; non-parametric linkage Z score=1.95; p=0.03). 2604 unrelated individuals with Parkinson's disease and 344 matched controls were additionally genotyped, and five more people originating from five countries (Canada, Italy, Poland, Turkey, and Tunisia) were identified with the *RAB32* variant. From the database searches, in which 6043 individuals with Parkinson's disease and 62 549 controls were included, another eight individuals were identified with the *RAB32* variant from four countries (Canada, Germany, UK, and USA). Overall, the association of *RAB32* c.213C>G (Ser71Arg) with Parkinson's disease was significant (odds ratio [OR] 13.17, 95% CI 2.15–87.23; p=0.0055; P=99.96%). In the people who had the variant, Parkinson's disease presented at age 54.6 years (SD 12.75, range 31–81, n=16), and two-thirds had a family history of parkinsonism. *RAB32* Ser71Arg heterozygotes shared a common haplotype, although penetrance was incomplete. Findings in one individual at autopsy showed sparse neurofibrillary tangle pathology in the midbrain and thalamus, without Lewy body pathology. In functional studies, *RAB32* Arg71 activated LRRK2 kinase to a level greater than *RAB32* Ser71.

**Interpretation** *RAB32* Ser71Arg is a novel genetic risk factor for Parkinson's disease, with reduced penetrance. The variant was found in individuals with Parkinson's disease from multiple ethnic groups, with the same haplotype. In-vitro assays show that *RAB32* Arg71 activates LRRK2 kinase, which indicates that genetically distinct causes of familial parkinsonism share the same mechanism. The discovery of *RAB32* Ser71Arg also suggests several genetically inherited causes of Parkinson's disease originated to control intracellular immunity. This shared aetiology should be considered in future translational research, while the global epidemiology of *RAB32* Ser71Arg needs to be assessed to inform genetic counselling.

**Funding** National Institutes of Health, the Canada Excellence Research Chairs program, Aligning Science Across Parkinson's, the Michael J Fox Foundation for Parkinson's Research, and the UK Medical Research Council.

**Copyright** © 2024 The Author(s). Published by Elsevier Ltd. This is an Open Access article under the CC BY 4.0 license.

Lancet Neurol 2024

Published Online

April 10, 2024

[https://doi.org/10.1016/S1474-4422\(24\)00121-2](https://doi.org/10.1016/S1474-4422(24)00121-2)

[https://doi.org/10.1016/S1474-4422\(24\)00121-2](https://doi.org/10.1016/S1474-4422(24)00121-2)

See Online/Comment

[https://doi.org/10.1016/S1474-4422\(24\)00166-2](https://doi.org/10.1016/S1474-4422(24)00166-2)

[https://doi.org/10.1016/S1474-4422\(24\)00166-2](https://doi.org/10.1016/S1474-4422(24)00166-2)

\*Contributed equally

Department of Genetics and Genomic Medicine, Great Ormond Street Institute of Child Health

(E K Gustavsson PhD,

M Grant-Peters PhD,

Prof M Ryten MD), Department

of Clinical and Movement

Neurosciences, UCL Queen

Square Institute of Neurology

(R Real MD, R Tilney MD,

Prof H R Morris MD), UCL

Movement Disorders Centre

(R Real, R Tilney, Prof H R Morris),

and NIHR Great Ormond Street

Hospital Biomedical Research

Centre (Prof M Ryten),

University College London,

London, UK; McKnight Brain

Institute, Department of

Neurology, University of

Florida, Gainesville, FL, USA

(J Follett PhD,

Prof M J Farrer PhD); Institute of

Neurogenetics, University of

Lübeck, Lübeck, Germany

(J Trinh PhD); Department of

Neurology, Center for

Neurodegeneration and

Experimental Therapeutics,

University of Alabama at

Birmingham, Birmingham, AL,

USA (S K Barodia PhD, Z Liu PhD,

M S Goldberg PhD); Department

of Medical Genetics

(E K Gustavsson, J Follett,

Prof M J Farrer, J Trinh,

J D Fox BSc, C Vilariño-Güell PhD)

and Pacific Parkinson's

Research Centre, Djavad

Mowafaghian Centre for Brain

Health, Division of Neurology

(S Appel-Cresswell MD,

Prof A J Stoessl MD), University

of British Columbia, Vancouver,

BC, Canada; Movement

Disorders Program, Division of

Neurology (Prof A Rajput MD, Prof A H Rajput MD) and Department of Pathology (R Auer MD), University of Saskatchewan and Saskatchewan Health Authority, Saskatoon, SK, Canada; Institute for Medical Genetics and Applied Genomics (M Sturm PhD, T B Haack MD) and Centre for Genetic Epidemiology, Institute for Clinical Epidemiology and Applied Biometry (M Sharma PhD), University of Tübingen, Tübingen, Germany; Sorbonne Université, Institut du Cerveau–Paris Brain Institute–ICM, Inserm, CNRS, Paris, France (Prof S Lesage PhD, C Tesson PhD, Prof A Brice MD); Assistance Publique Hôpitaux de Paris, Hôpital Pitié-Salpêtrière, Département de Neurologie, Centre d'Investigation Clinique Neurosciences, DMU Neuroscience, Paris, France (Prof A Brice); Duke Center for Neurodegeneration and Neurotherapeutics, Department of Pharmacology and Cancer Biology, Duke University, Durham, NC, USA (Prof A B West PhD); Division of Neurology, Nuffield Department of Clinical Neurosciences, University of Oxford, Oxford, UK (Prof M T Hu MD); The Neuro, Montreal Neurological Institute–Hospital, Montreal, QC, Canada (Prof Z Gan-Or MD); Department of Neurology and Neurosurgery, and Department of Human Genetics, McGill University, Montreal, QC, Canada (Prof Z Gan-Or); Behavioural Neurology and Movement Disorders Unit, Department of Neurology, Istanbul Faculty of Medicine, Istanbul University, Istanbul, Turkey (B Samanci MD); MRC Protein Phosphorylation and Ubiquitylation Unit, School of Life Sciences, University of Dundee, Dundee, UK (P Lis PhD, F Tonelli PhD, Prof D R Alessi PhD); Aligning Science Across Parkinson's Collaborative Research Network, Chevy Chase, MD, USA (E K Gustavsson, M Grant-Peters, Prof M Ryten, R Real, Prof H R Morris, P Lis, F Tonelli PhD, Prof D R Alessi); Queen Mary College, University of London, London, UK (M T Perinán PhD); Service de Neurologie, Institut National

## Research in context

### Evidence before this study

We searched PubMed with the search terms “Parkinson’s disease”, “Parkinsonism” and “RAB32” for articles published in English on or before Jan 4, 2024, in any field. We found a total of seven articles. No studies were found describing genetic variability in *RAB32* in Parkinson’s disease or parkinsonism. One epigenome-wide study of CD14+ monocytes suggests hypomethylation and increased expression of *RAB32* is associated with idiopathic Parkinson’s disease. Altogether, the articles serve to highlight an interaction between *LRRK2* and *RAB32*, which potentially coordinates a cell-intrinsic itaconate-dependent defence pathway against intracellular pathogens. A similar search for “RAB32” and “PINK1” revealed no results. However, *PINK1* is well described in mitochondrial quality control and mitophagy, and this process might restrict inflammatory cytokine secretion and directly regulate antigen presentation and immune cell homeostasis.

### Added value of this study

We have shared our discovery of *RAB32* Ser71Arg in prior conference proceedings and a review hoping more affected probands and families would be identified. However, through genetic linkage and association meta-analysis, this study is the first to provide strong evidence to suggest that *RAB32* Ser71Arg causes familial parkinsonism. We demonstrate that *RAB32* Ser71Arg activates *LRRK2* kinase, we show that it colocalises with *PINK1*, and we highlight its association with retromer

(VPS35 via VARP). Hence, *RAB32* is a nexus that unites at least four major gene discoveries for familial and seemingly sporadic Parkinson’s disease. Moreover, our data suggest that a convergence of evolution underlies this molecular mechanism for disease pathogenesis.

### Implications of all the available evidence

Our study provides the first evidence for *RAB32* Ser71Arg as a cause of late-onset Parkinsonism. The Ser71Arg mutation seems to originate from one founder despite its worldwide diaspora, and appears to segregate with disease, albeit with reduced penetrance. Functional analysis shows that *RAB32* Arg71 activates *LRRK2* kinase to a level greater than *RAB32* Ser71 (wild-type) without disrupting the interaction between these two proteins. *RAB32* Ser71Arg also reduced colocalisation with the mitochondrial kinase *PINK1*. Mutations in *LRRK2* that lead to constitutive activation of its kinase domain are genetically linked to Parkinson’s disease and are associated with mitochondrial health and impaired mitophagy. Our study provides a unique, genetically stratified cause of Parkinson’s disease that is distinct from *LRRK2* and is likely to both benefit from and provide unmet insight into *LRRK2* function and inhibitor testing within the clinic. As *LRRK2* kinase inhibitors are being trialled as a disease-modifying therapy in Parkinson’s disease, further work is needed to establish their potential in *RAB32* Ser71Arg Parkinson’s disease.

## Introduction

Parkinson’s disease is a progressive neurodegenerative disease that can have many causes. This movement disorder is invariably associated with a loss of dopaminergic neurons in the substantia nigra pars compacta. To date, 19–37% of the genetic heritability of Parkinson’s disease has been accounted for, and efforts are ongoing to identify novel Parkinson’s disease loci and pathogenic variants.<sup>1</sup> Thus far, Mendelian genetic discoveries have highlighted autophagic (lysosomal), mitochondrial, and endosomal proteins that are implicated in the disease. For example, pathogenic variants have been identified in *SNCA* in families with dominantly inherited parkinsonism.<sup>2,3</sup> Monomeric  $\alpha$ -synuclein (which is encoded by *SNCA*) functions as a vesicular chaperone,<sup>4</sup> but it can aggregate into Lewy body pathology,<sup>5</sup> which is pathognomonic for Parkinson’s disease.<sup>4</sup> Additionally, *PRKN* and *PINK1* mutations were discovered in young people with recessively inherited Parkinson’s disease, and variants in these genes highlight deficits in mitochondrial function, mitophagy, and intracellular immunity.<sup>6–8</sup> A pathogenic variant in *VPS35* (c.1858G>A; Asp620Asn; NCBI accession number NM\_018206.4) also leads to dominantly inherited parkinsonism. *VPS35* is part of the retromer complex that enables cargo recycling of endosomal membrane-associated proteins, including the dopamine transporter.<sup>9</sup>

Finally, pathogenic variants in *LRRK2* cause dominantly inherited parkinsonism through augmented kinase activity. *LRRK2* phosphorylates several RAB GTPase molecules at a conserved residue in the switch II domain to control effector binding activities, localisation, and function,<sup>10</sup> and a subset of RAB GTPases are genetically implicated in idiopathic Parkinson’s disease and atypical parkinsonism.<sup>1,11,12</sup>

The RAB family comprises 61 small GTPases that all function as molecular switches to regulate intracellular vesicular trafficking, alternating between two conformational states—the GTP-bound on form, and the GDP-bound off form. We postulated that additional RAB GTPases might be genetically linked to familial parkinsonism or associated with idiopathic Parkinson’s disease, or both. We aimed to assess genetic variability in RAB GTPase genes using whole-exome sequencing (WES) and segregation analysis in families with multi-incident Parkinson’s disease, with validation through case–control association analyses and functional studies.

## Methods

### Participants

We recruited probands and asymptomatic family members from the Centre for Applied Neurogenetics, which was established through a Canada Excellence

Research Chair (MJF). This 7-year award, based at the University of British Columbia (Vancouver, BC, Canada), enabled an international network for research into Parkinson's disease. Proband and their families from 36 sites in 24 countries were included in the network, and recruitment was done between July 1, 2010, and June 30, 2017. All sites within the network obtained local ethics committee approval before participant recruitment. Within the network, all probands and asymptomatic family members were examined by neurologists with expertise in movement disorders, generally as part of their clinical care (appendix 1 p 2). Affected probands and their families provided written informed consent to participate in this clinicogenetic research, as well as blood or DNA samples. Proband were diagnosed with Parkinson's disease according to UK Brain Bank Criteria,<sup>13</sup> which had been modified to allow for a positive family history of Parkinson's disease. For the purposes of this study, we only included probands from Canada and Tunisia who were from pedigrees with multi-incident parkinsonism (ie, two or more family members diagnosed as having Parkinson's disease or primary parkinsonism) in whom

no known Mendelian causes of Parkinson's disease had been identified. Neuropathological analyses were performed in accordance with biomedical research ethics procedures at the University of Saskatchewan (Saskatoon, SK, Canada; appendix 1 p 3).

### Procedures

To explore the genetic variability of RAB GTPases in Parkinson's disease, probands were screened for known pathogenic variants in Parkinson's disease-related genes by WES (appendix 1 p 2); asymptomatic family members were not included in this screening process. All variants observed were assigned a Genomic Evolutionary Rate Profiling scores (GERP; range  $-12.3$  to  $6.17$ , with  $6.17$  being the most conserved) and Combined Annotation Dependent Depletion values (CADD; a composite prediction of how deleterious a nucleotide variant is in the human genome, range  $1-99$ . A  $CADD \geq 20$  is the top 1% of the most deleterious variants). Public references were also used to provide minor allele frequencies (MAF) including the NCBI Allele Frequency Aggregator dataset (ALFA) and the Genome Aggregation Database (gnomAD version 4.0.0.0).

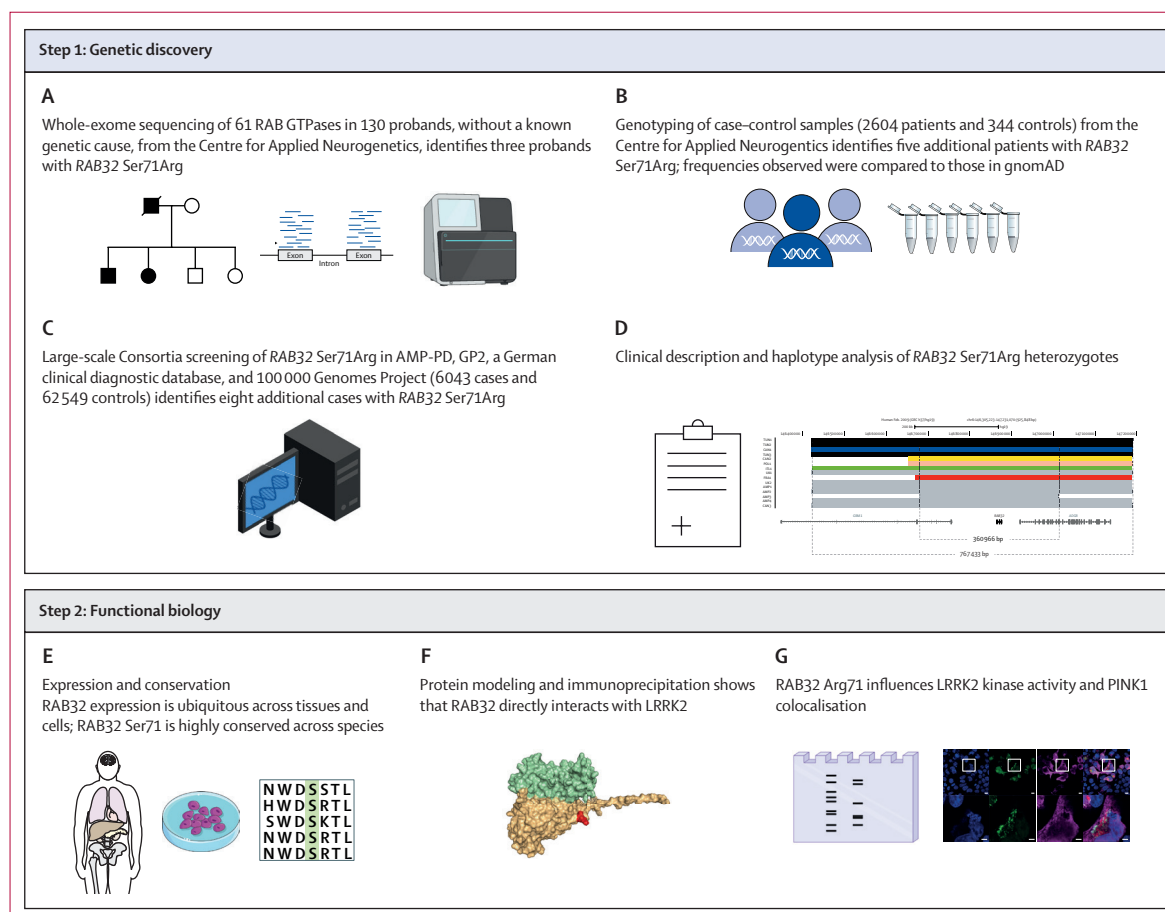
de Neurologie, La Rabta, Tunis, Tunisia (R Amouri PhD, S Ben Sassi MD, Prof F Hentati MD)

Correspondence to: Prof Matthew J Farrer, McKnight Brain Institute, Department of Neurology, University of Florida, Gainesville, FL 32610 USA. [m.farrer@ufl.edu](mailto:m.farrer@ufl.edu)

See Online for appendix 1

For the ALFA dataset see [www.ncbi.nlm.nih.gov/snp/docs/gsr/alfa/](http://www.ncbi.nlm.nih.gov/snp/docs/gsr/alfa/)

For the gnomAD see <https://gnomad.broadinstitute.org/>



**Figure 1:** Schematic outline of the methodological framework used in the study

AMP-PD=Accelerating Medicines Partnership in Parkinson's Disease. GP2=Global Parkinson's Genetics Program.

Putatively pathogenic variants in RAB GTPases were ranked by their rarity, high GERP and CADD scores, then analysed for segregation with Parkinson's disease within the multi-incident families in which they were identified. Top candidates—ie, those variants in RAB genes that were identified in more than one family—were genotyped in additional series of people with Parkinson's disease at the Centre for Applied Neurogenetics (who were unrelated to the probands and to each other), and controls who were matched by country of origin, age, and sex. Subsequent, large-scale screening of the single most promising RAB gene and variant was bioinformatically performed using whole-genome sequencing (WGS) data from three publicly available clinicogenomic databases—Accelerating Medicines Partnership in Parkinson's Disease (AMP-PD), Global Parkinson's Genetics Program (GP2), and the 100 000 Genomes Project—and a privately owned German clinical diagnostic database (University of Tübingen, Tübingen, Germany; appendix 2 p 3).<sup>14</sup>

To assess whether candidate RAB variants shared a common ancestral haplotype, single nucleotide polymorphisms (SNPs) were genotyped in the pedigrees (figure 1D; appendix 1 p 3). Gametic phase was assessed within pedigrees. Genotypes for the same SNPs were retrieved from whole genome data within public databases as a confirmatory step, using bcftools (release 1.18).

Functional biology included assessment of mRNA and protein expression of the candidate RAB using tissue samples obtained from publicly available datasets. mRNA expression was assessed using Genotype-Tissue Expression (GTEx version 8, that includes 54 different human tissues; Broad Institute of MIT and Harvard) and protein expression was assessed with the Human Protein Atlas (that includes 44 normal human tissue types; Knut & Alice Wallenberg Foundation; appendix 1 p 3). Furthermore, we did immunohistochemical staining in

C57BL/6 mice (JAX stock #000664) to assess candidate protein expression in the substantia nigra pars compacta (appendix 1 pp 4–5).

To predict the potential effect of the candidate RAB variant on LRRK2 protein, structural modelling was done with AlphaFold (Google DeepMind and the European Molecular Biology Laboratory–European Bioinformatics Institute; appendix 1 p 3).<sup>15</sup> Resulting structures were analysed using PyMOL 2.5.5. (Informer Technologies) BIOVIA Discovery Studio Visualizer 2021 (Dassault Systemes) was used to determine possible intermolecular interactions (ie, the non-covalent interactions between atoms) and to predict potential rotamers (ie, that represent the local energy minima and ranges of torsional angles for amino acid side chains in the protein model).

Quantitative western blotting was done in HEK293 cells to assess the potential relationship between LRRK2 activity and the candidate protein variant (appendix 1 p 4). RAB29 was used as a positive control as it is known to induce activation of LRRK2.<sup>16</sup> We also treated cells with the small molecule kinase inhibitor (MLi-2) to inhibit LRRK2 kinase activity. Densitometric signals from western blots were analysed in ImageJ software.<sup>17</sup> Several RAB GTPases are known to activate and be substrates of LRRK2. Therefore, we used two assays to determine whether the candidate variant would change the interaction between the mutated RAB protein and LRRK2 and cause activation of LRRK2 kinase. An in vitro cell system<sup>18</sup> tested the interaction between LRRK2 and the mutated RAB32 protein whereas phosphorylation sites known to correlate with LRRK2 activity (LRRK2-Ser1292 [autophosphorylation site],<sup>19</sup> LRRK2-Ser935 [biomarker site], and a LRRK2-direct substrate [RAB10-Thr73])<sup>10</sup> provided an in-vitro assessment of LRRK2 kinase activity.

### Statistical analysis

To assess segregation of the candidate variant with Parkinson's disease, non-parametric linkage analysis (Whittemore and Halpern) was done in multi-incident families, using the Kong and Cox 1997 exponential model, as implemented by Merlin 1.1.2 (Abecasis Lab, School of Public Health, University of Michigan, Ann Arbor, MI, USA).<sup>20</sup> Association analyses were done to examine the association of candidate variant with Parkinson's disease risk in each case-control series, using Fisher's exact test and random-effects meta-analysis modelling, with the metafor package for R.<sup>21</sup> A p value  $\leq 0.05$  was considered statistically significant in single variant analyses, and in ANOVA, prior to performing post-hoc Tukey's tests adjusted for multiple comparisons.

### Role of the funding source

The funders of the study had no role in study design, data collection, data analysis, data interpretation, or writing of the report.

For more on AMP-PD see <https://amp-pd.org>

For more on GP2 see <https://gp2.org>

For the 100 000 Genomes Project see <https://www.genomicsengland.co.uk/initiatives/100000-genomes-project>

See Online for appendix 2

For ImageJ software see <https://imagej.net/ij/>

For more on bcftools see <https://github.com/samtools/bcftools>

For the Human Protein Atlas see <https://www.proteinatlas.org/>

	Probands (n=130)
<b>Sex</b>	
Female	47 (36%)
Male	83 (64%)
<b>Age at onset, years</b>	
Mean	54.2 (14.1)
Range	13–83
<b>Age at study, years</b>	
Mean	72.7 (11.7)
Range	38–96
<b>Race</b>	
White	109
East Asian	2
Hispanic	1
North African	18

**Table 1: Clinical characteristics of 130 probands with Parkinson's disease without a known genetic cause, from the Centre for Applied Neurogenetics**

	Chr:position (Human reference genome/GRCh37 assembly, hg19)	Reference/ Alternate allele	NCBI Reference Sequence	Coding nucleotide change	Amino acid change	Reference SNP identifier	Allele frequency (gnomAD v4.0)	CADD phred-like score	Number of carriers (from 130 probands)	Zygoty
RAB3B	1:52385700	T/C	NM_002867	559A>G	Met187Val	rs34017695	6.90 × 10 <sup>-4</sup>	27.8	1	Heterozygote
RAB17	2:238483760	G/T	NM_022449	541C>A	Leu181Met	rs112742374	1.75 × 10 <sup>-4</sup>	35.0	1	Heterozygote
RAB6B	3:133553479	G/A	NM_016577	502C>T	Arg168Ter	rs147187493	2.48 × 10 <sup>-6</sup>	44.0	1	Heterozygote
RAB28	4:13373484	A/C	NM_001159601	581T>G	Phe194Cys	rs1560264563	2.16 × 10 <sup>-6</sup>	25.0	1	Heterozygote
RAB24	5:176729484	T/C	NM_001031677	347A>G	Tyr116Cys	rs1475147714	6.57 × 10 <sup>-6</sup>	23.4	1	Heterozygote
RAB32	6:146865220	C/G	NM_006834	213C>G	Ser71Arg	rs200251693	9.30 × 10 <sup>-6</sup>	19.2	3	Heterozygote
RAB38	11:87908390	G/A	NM_022337	163C>T	Pro55Ser	rs769358206	2.74 × 10 <sup>-6</sup>	35.0	1	Heterozygote
RAB27A	15:55497812	G/A	NM_004580	559C>T	Arg187Trp	rs144946000	1.41 × 10 <sup>-4</sup>	24.5	1	Heterozygote
RAB27A	15:55516087	C/G	NM_004580	467G>C	Gly156Ala	rs200031368	5.83 × 10 <sup>-5</sup>	41.0	1	Heterozygote
RAB8B	15:63548776	A/T	NM_016530	397A>T	Lys133Ter	NA	NA	19.0	1	Heterozygote
RAB26	16:2201727	G/A	NM_014353	380G>A	Arg127H	rs149935646	2.27 × 10 <sup>-4</sup>	34.0	1	Heterozygote
RAB37	17:72733173	G/A	NM_001163989	25G>A	Gly9Arg	rs762798603	1.62 × 10 <sup>-5</sup>	16.5	1	Heterozygote
RAB40B	17:80616378	C/T	NM_006822	554G>A	Arg185Gln	rs199886901	4.22 × 10 <sup>-4</sup>	13.7	1	Heterozygote
RAB12	18:8636320	A/G	NM_001025300	586A>G	Ile196Val	rs143888944	5.26 × 10 <sup>-4</sup>	19.12	1	Heterozygote
RAB36	22:23503707	G/A	NM_004914	958G>A	Glu320Lys	rs9624038	3.94 × 10 <sup>-4</sup>	33.0	1	Heterozygote

CADD=Combined Annotation Dependent Depletion. NA=not available

**Table 2: 15 rare non-synonymous variants in the RAB GTPase genes in 130 probands with Parkinson's disease or primary parkinsonism**

## Results

130 probands from pedigrees with multi-incident parkinsonism were included, of whom 47 were female and 83 were male, mean age at onset was 54.2 years (SD 14.1; range 13–83), and 109 were White, 18 were of north African ancestry, two were east Asian, and one was Hispanic (table 1). No known Mendelian causes of Parkinson's disease were found. Probands underwent WES and RAB GTPase variant analysis in 61 RAB GTPase genes (figure 1A; appendix 2 p 1). 15 heterozygous rare (gnomAD v4.0 MAF<0.001) and putatively damaging non-synonymous variants in RAB GTPase genes were reported (table 2).

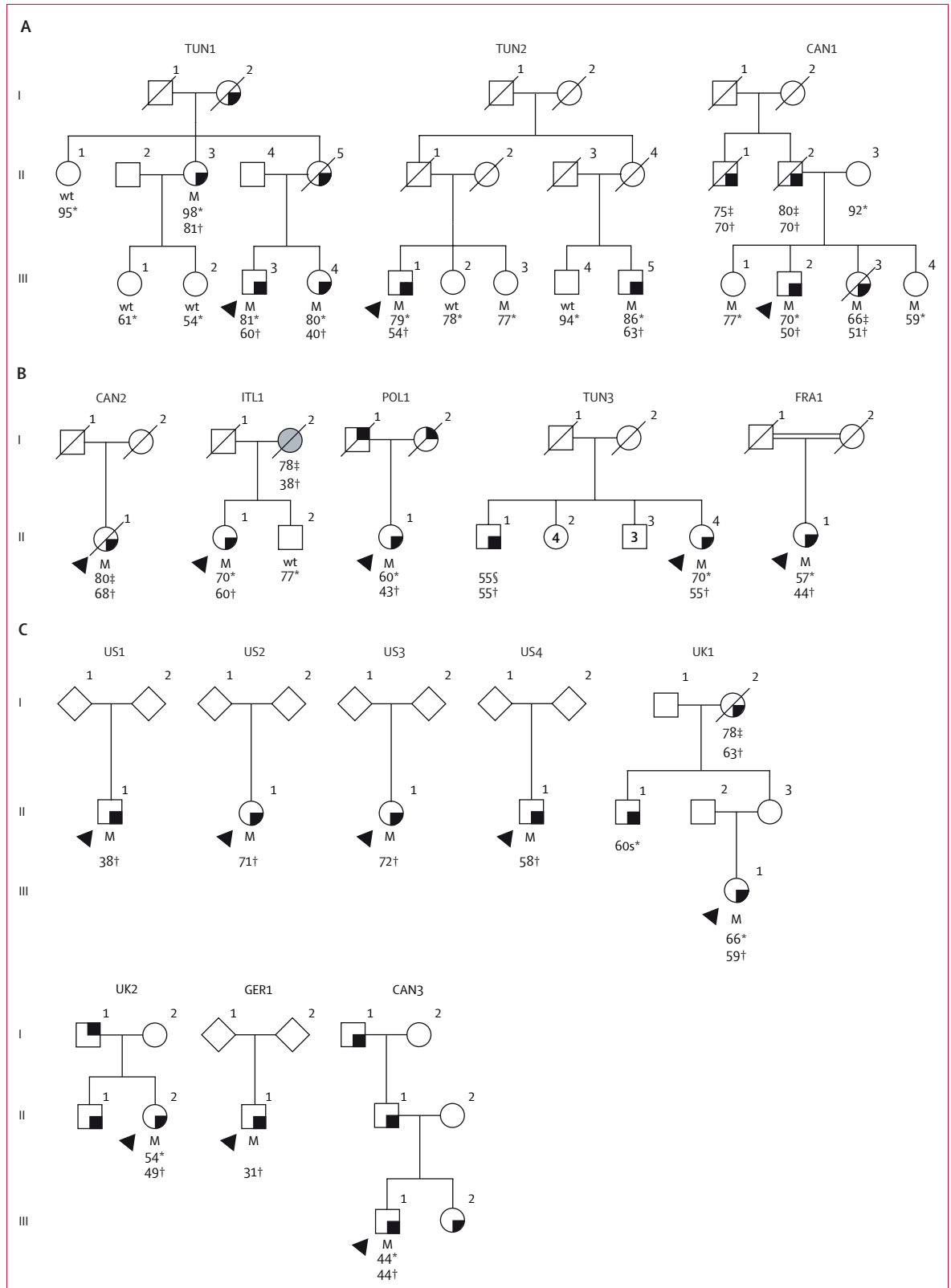
A variant in the *RAB32* gene, c.213C>G (Ser71Arg; NCBI Reference Sequence: NM\_006834.5; dbSNP: rs200251693) was identified in three probands, which cosegregated with parkinsonism in their pedigrees (figure 2A).<sup>22,23</sup> In the first pedigree from Tunisia (TUN1), a sib-pair (III-3 and III-4) and their aunt (II-3) were heterozygous for *RAB32* Ser71Arg, and presented with resting tremor at ages 60, 40, and 81 years, respectively (table 3). Three family members in TUN1 without signs of parkinsonism (III-1, III-2, and II-1) did not carry the mutation. In the second pedigree from Tunisia (TUN2), a first-cousin pair (III-1 and III-5) were both heterozygous for *RAB32* Ser71Arg. They initially presented with resting tremor at the ages of 54 years and 63 years, respectively. During their last visit, both individuals exhibited cognitive impairment, as evidenced by Mini-Mental State Examination (MMSE) scores of 17. Additionally, III-3 (sister of III-1 and first-cousin of III-5), who was asymptomatic at age 77 years, also carried *RAB32* Ser71Arg, whereas two additional unaffected family

members (III-2 and III-4) did not. In the third pedigree from Canada (CAN1; of French origin), two affected siblings (III-2 and III-3) were heterozygous for *RAB32* Ser71Arg. The brother (III-2) was 70 years old and had presented with clumsiness on his left side and postural instability at age 50 years. He was diagnosed with akinetic-rigid Parkinson's disease. He had slowly progressive parkinsonism (Hoehn and Yahr stage 2) and mild cognitive impairment (Montreal Cognitive Assessment [MoCA] score of 26) after 17 years of disease. His affected sister (III-3) noticed pain in her right upper limb at age 51 years and died at age 66 years due to metastatic colorectal adenocarcinoma, at which time she had late-stage Parkinson's disease (Hoehn and Yahr stage 4). Additionally, two siblings (III-1 and III-4), who showed no signs of neurological disease at ages 77 years and 59 years, respectively, also carried *RAB32* Ser71Arg. No information on more subtle signs such as hyposmia, REM-sleep behaviour disorder, or orthostasis were available. Non-parametric linkage analysis was performed for all three families using their pedigree relationships, *RAB32* Ser71Arg genotyping results, and the frequency of the *RAB32* Arg71 allele in gnomAD=0.0000093 (15/1613550 alleles). This analysis showed the mutation and Parkinson's disease cosegregate (Z score=1.95; p=0.03) with a Kong and Cox logarithm of odds score LOD=1.51 at  $\theta=0$  (p=0.004). This is a statistical estimate of the relative probability that Parkinson's disease and the *RAB32* Arg71 allele are inherited together, and is significant for a single marker test.

We subsequently genotyped *RAB32* Ser71Arg in population-matched individuals including 2604 unrelated people with Parkinson's disease (figure 1B). Of these,

**Figure 2: RAB32 Ser71Arg co-segregates with Parkinson's disease**

(A) Simplified pedigrees for three families with the RAB32 Ser71Arg mutation. (B) Subsequent genotyping and (C) Parkinson's disease database searches that identified affected RAB32 Ser71Arg heterozygotes. Males are represented by squares and females by circles, numbers within those symbols refer to total counts, diamonds are where sex is undefined; probands are represented by a black arrowhead and a diagonal line indicates deceased individuals. People diagnosed with Parkinson's disease have a black square in the bottom right corner; the individual with a black square in the top right corner had reported tremor without a diagnosis; the person with a grey filled symbol had an unspecified progressive neurological disorder. Heterozygote mutant and wild-type genotypes are indicated with corresponding age at study analysis and age at symptom onset (if known). M=mutant. Wt=wild-type. \*Age at study analyses. †Age at onset of the disease. ‡Age at death. §Lost to follow up.



Country	Father's origin	Mother's Sex	Age, years	Family history of parkinsonism	Age at onset, years	Disease duration, years	Initial symptom	Asymmetry at diagnosis	Diagnosis subtype	Cognition (MMSE score)	Positive response to levodopa	Other characteristics	Shared 0-36 Mb haplotype spanning RAB32
TUN1													
III-3	Tunisia	Male	70	Yes	60	10	Resting tremor	NA	Tremor	29	Yes	NA	Yes
II-3	Tunisia	Female	~98	..	81	17	Resting tremor	NA	Tremor	15	Yes	NA	Yes
III-4	Tunisia	Female	~78	..	40	39	NA	NA	NA	21	Yes	NA	Yes
TUN2													
III-1	Tunisia	Male	69	Yes	54	15	Resting tremor	NA	Tremor	17	Yes	NA	Yes
III-5	Tunisia	Male	85	..	63	22	Resting tremor	NA	NA	17	Yes	NA	Yes
CAN1													
III-2	Canada, Quebec	Male	70	Yes	50	21	Postural instability, clumsiness on left side	Yes	Akinetic-rigid	26 (MoCA after 17 years of disease)	Yes	Melanoma. Hyperlipidemia	Yes
III-3	Canada, Quebec	Female	66*	..	51	15	Pain right superior limb	Yes	NA	NA	Yes	Melanoma, died of colorectal carcinoma at 66 y	Yes
TUN3: II-1	Tunisia	Female	70	Yes, brother	55	16	Akinetic-rigid parkinsonism	Yes	Akinetic rigid	Normal	Yes, with drug-induced dyskinesia	Autonomic dysfunction (constipation and urinary), no oculomotor signs	Yes
CAN2: II-1	Canada, Saskatchewan	Female	80*	NA	68	12	Tremor (right leg), progressing to bradykinesia and rigidity within first year	Yes	Mixed	28 (normal) at 80 years	Amantadine, selegiline, before L-dopa after 9 years	Sparse neurofibrillary tangle pathology	Yes
POL1: II-1	USA	Female	60	Yes, both parents	43	17	Tremor	NA	Tremor	NA	NA	NA	Yes
ITL1: II-1	Canada, British Columbia	Female	70	Yes, mother unspecified disease, onset 37 years	60	10	Bradykinesia	NA	NA	NA	Yes	NA	Yes
FRA1: II-1	France	Female	NA	No	44	NA	Tremor and bradykinesia	NA	NA	23 (mild cognitive impairment), 13 years post onset	Yes, but dyskinesia and dystonia	Autonomic dysfunction (urinary); high blood pressure and dyslipidemia	Yes
US1: II-1	USA	Male	NA	Yes	38	NA	NA	NA	NA	NA	NA	NA	Yes
US2: II-1	USA	Female	NA	Yes	71	NA	NA	NA	NA	NA	NA	NA	Yes
US3: II-1	USA	Female	NA	Yes	72	NA	NA	NA	NA	NA	NA	NA	Yes
US4: II-1	USA	Male	NA	No	58	NA	NA	NA	NA	NA	NA	NA	Yes
UK1: III-1	UK	Female	66	Yes, maternal grandmother (onset 63, death 78), maternal uncle (onset 60s)	60	6	Right-sided rest tremor	Yes	Atypical	NA	Yes	NA	Yes

(Table 3 continues on next page)

Country	Father's origin	Mother's origin	Sex	Age, years	Family history of parkinsonism	Age at onset, years	Disease duration, years	Initial symptom	Asymmetry at diagnosis	Diagnosis subtype	Cognition (MMSE score)	Positive response to levodopa	Other characteristics	Shared 0.36 Mb haplotype spanning RAB32
(Continued from previous page)														
UK2: II-1	European	NA	Female	54	Yes, father with tremor, brother with a similar presentation of left arm focal dystonia and polynuropathy	49	40	Childhood dystonic tremor, upper limbs	Yes	Atypical	NA	NA	Hereditary demyelinating polynuropathy, positive DaT-SPECT	Yes
GER1: II-1	Germany	NA	Male	31	No	NA	NA	Right leg, then right upper limb tremor	Yes	Tremor	NA	Yes	Micrographia, hyposmia	NA
CAN3: III-1	Canada, Alberta	European	Female	44	Yes, affected sister, father and paternal grandfather	44	NA	NA	NA	NA	NA	NA	NA	Yes

MoCA=Montreal Cognitive Assessment; MMSE=Mini-Mental State Examination. NA=not available. Conserved, shared 0.36 Mb haplotype spanning RAB32.

Table 3. Clinical characteristics of RAB32 571R heterozygotes

2204 were people with Parkinson's disease of North American and European ancestry (mean age at onset 60.2 years [SD 11.8, range 26–80]; male to female ratio 1.7:1.0) and 400 were people with Parkinson's disease from Tunisia (mean age at onset 55.2 years [SD 14.7, range 13–87]; male to female ratio 1.0:1.0; appendix 2 p 2). Furthermore, 344 controls from Tunisia were included (mean age 66.3 [SD 11.1] years, range 39–100 years, male to female ratio 1.1:1.0; appendix 2 p 2). Five affected heterozygotes for RAB32 Ser71Arg were identified (table 3, figure 2B). One affected proband identified, designated CAN2, was a female of Canadian origin with German and Romanian ancestry (II-1), who was diagnosed with Parkinson's disease at age 68 years and died 12 years later. She had onset of right leg tremor that progressed to include tremor, bradykinesia, and rigidity within 1 year. For the first 9 years, she had mild-to-moderate Parkinson's disease (Hoehn and Yahr stages 2–3) and was treated with dopamine agonists, amantadine, and selegiline. Subsequently, she benefited from levodopa without dyskinesia, but with mild wearing off symptoms. At age 80 years, at the last visit before she died, she was at Hoehn and Yahr stage 3 with no cognitive impairment (MMSE score 28). Neuropathological findings from this individual at autopsy showed mild-to-moderate neuronal loss in the substantia nigra pars compacta with sparse neurofibrillary tangles. Similar inclusion pathology was found in the thalamus and locus coeruleus. Mild-to-moderate globus pallidus neuronal loss was also observed, but ubiquitin and  $\alpha$ -synuclein stains were unremarkable. A second affected proband, denoted the ITL1 pedigree, was a 70-year-old Canadian female (II-1) with parents of Italian ancestry who presented with bradykinesia at age 60 years. Her mother (I-2) had been bedbound for several years before her death at age 78 years, and had an unspecified progressive neurological disorder, with an age at onset of 37 years. A third affected proband, POL1, comprised a 60-year-old female (II-1) who was living in the USA; both parents were of Polish heritage. She was diagnosed with Parkinson's disease at age 43 years. Both her parents had tremor, but DNA samples were not available for testing. A third pedigree was identified from Tunisia, TUN3. The affected proband II-4 was a 70-year-old female who was diagnosed with Parkinson's disease at age 55 years. She had akinetic-rigid parkinsonism with good response to levodopa with drug-induced dyskinesia, as well as autonomic dysfunction including constipation and urinary dysfunction. No oculomotor abnormalities nor cognitive dysfunction were reported. Her brother (II-1) had developed Parkinson's disease at 55 years, but he was lost to follow-up a year later. He had akinetic-rigid parkinsonism and his first symptom was deterioration in gait. The fifth affected proband, denoted FRA1 (contributed by Sorbonne University, Paris, France) comprised a Turkish female (II-1) with no known family history of disease. She had slowness of movements and



tremor at age 44 years. By age 57 years, her symptoms had slowly progressed to include bradykinesia and rigidity (Hoehn and Yahr stage 2), and an MMSE score of 23 after 13 years of disease duration. She developed non-motor signs, and symptoms including urinary disturbance. Levodopa treatment led to a considerable improvement of clinical signs, but she developed dyskinesia and dystonia.

Eight *RAB32* Ser71Arg heterozygotes were subsequently identified by bioinformatic analysis across four clinicogenomic databases (figure 1C, 2C, table 3), of whom four individuals of White, North American, or European descent with parkinsonism were identified via the AMP-PD database (US1, US2, US3, and US4). Notably, II-1 from US1 (age at onset of 38 years), II-1 from US2 (age at onset of 71 years), and II-1 from US3 (age at onset of 72 years) all had a positive family history for Parkinson's disease, whereas II-1 from US4 (age at onset of 58 years) was a sporadic case. Unfortunately, no additional clinical details were available. A total of 19 coding substitutions were identified in *RAB32* in the AMP-PD dataset (appendix 2 p 4), including two stop mutations, but only Ser71Arg was associated with Parkinson's disease (unadjusted  $\chi^2$  test 4.9,  $p=0.026$ ). Two people in the 100 000 Genomes Project database were heterozygous for *RAB32* Ser71Arg. The first, designated III-1 in the UK1 pedigree, was a 66-year-old British female of European ancestry. She was diagnosed with Parkinson's disease at age 60 years. Her symptoms began with a right-sided rest tremor 1 year before her diagnosis. She was levodopa-responsive and developed dyskinesia and dystonia of the right leg. Her maternal grandmother (I-2) had Parkinson's disease (age at onset of 63 years) and died at age 78 years, and her maternal uncle (II-1) had Parkinson's disease in his 60s. The second individual identified from the 100 000 Genomes Project was a 54-year-old female (II-2 in the UK2 pedigree) of European ancestry. Her symptoms began in adolescence with a dystonic tremor affecting her upper limbs. She had features suggestive of a polyneuropathy that was later shown to be a hereditary demyelinating neuropathy with neurophysiology studies. She developed parkinsonism and was diagnosed with Parkinson's disease at age 49 years. DaT-SPECT imaging showed a profound dopaminergic reduction of tracer uptake in the left caudate nucleus. MRI showed non-specific white matter changes and her CSF was unremarkable. Her brother (II-1) had a similar clinical workup and developed early onset parkinsonism with dystonia. Her father (I-1) had tremor but was never diagnosed with Parkinson's disease. 20 variants in *RAB32* were identified via the 100 000 Genomes Project (appendix 2 p 4). Another pedigree (GER1) was identified in a private database for clinical genome and exome sequencing (University of Tübingen, Tübingen, Germany). This individual was male (II-1) and had reported difficulties with his right leg when jogging at age 31 years and had genetic testing. Subsequently, he noticed tremor in his right upper

limb and micrographia. Neurological examination documented mild right-sided bradykinesia and rigor, mild bilateral resting tremor, abnormal gait with reduced right arm swing, and hyposmia. A likely diagnosis of levodopa-responsive early-onset Parkinson's disease was made. In the same database, three other young female heterozygotes were identified with non-neurological disorders. Their symptoms included abnormal inflammatory responses, proteinuria (a nephropathy consisting of focal segmental glomerulosclerosis), and Tetralogy of Fallot with pulmonary stenosis. Diagnostic testing was done at age 22 years in one of these individuals and at age 15 years in the other two individuals, but no other clinical nor genetic data were available. Lastly, one female with *RAB32* Ser71Arg was identified through the GP2 database (III-1 in CAN3). She was from Alberta, Canada, but was ancestrally European, with an age at onset of 44 years and family history of parkinsonism, including her sister (III-2), father (II-1), and paternal grandfather (I-1). No other clinical data were available. Whole genome sequence data in GP2 showed nine coding variants in *RAB32*, but there were too few control participants to enable association analysis (appendix 2 p 4).

Next, we examined the association of *RAB32* Ser71Arg with Parkinson's disease risk in each case-control series (table 4). While results were equivocal in data from Tunisia ( $p>0.99$ ) and in the GP2 database ( $p>0.99$ ), as relatively few controls were included, the findings were significant in the AMP-PD database ( $p=0.044$ ) and the UK 100 000 Genomes Project ( $p=0.0005$ ; table 4). Subsequent meta-analysis across all series confirmed a significant effect (OR 13.17, 95% CI 2.15–87.23).

Haplotype analysis established gametic phase for the *RAB32* locus at chromosome 6q24.3 within

	Cases	Controls	Odds ratio (95% CI)*	p value
Case-control studies sample set				
Tunisia	1/400 (0.25%)	0/344	2.59 (0.11–63.71)	>0.99
North American AMP-PD	4/2204 (0.18%)	NA	NA	NA
GP2	4/3105 (0.13%)	0/3670	10.65 (0.57–197.91)	0.044
German clinical diagnostic database	1/1849 (0.05%)	0/349	0.57 (0.02–13.96)	>0.99
100 000 Genomes Project	1/311 (0.32%)	3/23389 (0.01%)	32.28 (4.75–219.33)	0.052
Meta-analysis	2/778 (0.26%)	0/35141	226.28 (10.85–4717.48)	0.0005
	13/8717 (0.15%)	3/65693 (<0.01%)	13.17 (2.15–87.23)†	0.0055

Database resources were last accessed between Sept 1 and Dec 20, 2023. AMP-PD=Accelerating Medicines Partnership in Parkinson's Disease. GP2=Global Parkinson's Genetics Program. NA=None or not applicable. \*When zero create computation challenges for the odds ratios or its SE, a constant (0.5) was added to all cells as a continuity correction. †The null hypothesis that *RAB32* Ser71Arg confers no risk is rejected ( $Z$  score=2.77  $p<0.006$ ;  $Q_{(df=3)}=9647$ ,  $p=0.0001$ ;  $I^2=99.96\%$ ).

**Table 4: Association analyses in case-control datasets**

three pedigrees (TUN1, TUN2, and CAN1; figure 1A). Genotypes of nine SNPs adjacent to *RAB32* c.213C>G showed that 15 of 16 probands shared a 332413–384587 base pair ancestral haplotype that appeared to be inherited identical-by-descent (table 3; appendix 2 p 5).

Biological analysis of *RAB32* mRNA and protein expression in various tissue samples obtained from people in publicly available databases showed a ubiquitous but low level of expression (figure 1E; appendix 1 p 9). Although expression was highest in non-brain tissues, such as immune cells and lung, brain expression was observed in spinal cord and substantia nigra pars compacta. Analyses with the Human Protein Atlas confirmed *RAB32* protein expression in endothelial cells, neuronal cells, and glia (appendix 1 p 9). Subsequent immunohistochemical analysis revealed endogenous *RAB32* expression within murine dopaminergic neurons (appendix 1 p 9).

Structural modelling suggests the *RAB32* Ser71Arg substitution is pathogenic, and is supported by conservation of the variant in orthologs (GERP score 4.68, CADD score 19.2; figure 1F; appendix 1 p 10). Structural modelling using AlphaFold predicted a robust interaction between *RAB32* and *LRRK2*, similar to *RAB29* and *RAB38* (appendix 1 pp 11–12). Modelling indicated that *RAB32* Arg71 would not affect *LRRK2* binding (appendix 1 p 12). Indeed, transfected *RAB32* co-immunoprecipitated with endogenous *LRRK2*, and the Arg71 mutation did not impair this interaction (figure 1G; appendix 1 p 13). Overexpression of wild-type *RAB32* increased *LRRK2*-direct substrate phosphorylation without enhancing *LRRK2* autophosphorylation (Tukey's multiple test comparison  $q_{(15)}=16.4$   $p<0.0001$  and  $q_{(15)}=0.05$   $p>0.99$ , respectively; appendix 1 p 14). Expression of *RAB32* Arg71 enhanced *LRRK2*-direct substrate phosphorylation and *LRRK2* autophosphorylation more than *RAB32* Ser71 (Tukey's  $q_{(15)}=44$   $p<0.0001$  and  $q_{(15)}=13.5$   $p<0.0001$ , respectively). *RAB32* Arg71 induced *LRRK2* autophosphorylation to a lower level than observed with the positive control, *RAB29* (*RAB32* Arg71 vs *RAB29* for *LRRK2*-direct substrate phosphorylation Tukey's  $q_{(15)}=12.3$   $p<0.0001$  and *LRRK2* autophosphorylation  $q_{(15)}=36.5$   $p<0.0001$ , respectively; appendix 1 p 14). Consistent with increased *LRRK2* activity, *RAB32* Arg71 reduced phosphorylation at this biomarker site more than *RAB32* Ser71 (Tukey's  $q_{(15)}=5.7$   $p<0.009$ ), comparable to *RAB29* (Tukey's  $q_{(15)}=2.3$   $p=0.52$ ). In contrast, *RAB32* Ala71 functioned like *RAB32* Ser71 and did not enhance *LRRK2* activation (appendix 1 p 14).

Lastly, we examined the potential interaction between *RAB32* and *PINK1*. Confocal microscopy of HEK293 cells transiently cotransfected with mCherry-Parkin, GFP-*RAB32*, and HA-*PINK1* revealed significant colocalization of GFP-*RAB32* with HA-*PINK1* but not with mCherry-Parkin (appendix 1 p18). Colocalisation with *PINK1* was significantly reduced in cells transfected with

*RAB32* Arg71 compared to Ser71, and was reduced to a similar extent as kinase dead *PINK1* (KD-*PINK1*; appendix 1 p 18). Cells transfected with both *RAB32* Arg71 and KD-*PINK1* showed the lowest colocalisation (appendix 1 p18). Our results suggest that both *PINK1* kinase activity and *RAB32* Ser71 are important for *PINK1*-*RAB32* colocalisation.

## Discussion

The findings of our genetic and clinical analyses showed that the *RAB32* variant Ser71Arg cosegregates with Parkinson's disease in three families; an additional 13 unrelated heterozygotes were identified in case-control analyses. All affected people had a clinical diagnosis of levodopa-responsive Parkinson's disease, with a mean age at onset of 54.6 years (SD 12.75, range 31–81), and two-thirds had a known family history of parkinsonism. These findings are comparable with those in people with Parkinson's disease with mutations in *LRRK2* (mean age at onset of 58.2 years [SD 12]) or *VPS35* (mean age at onset of 56.5 years [SD 12]).<sup>24</sup> In most of our *RAB32* Ser71Arg heterozygotes, tremor was the initial symptom, and Parkinson's disease onset, clinical variability, and progression were consistent with typical late-onset Parkinson's disease.<sup>25</sup> The cases of melanoma (in the CAN1 and ITL1 pedigrees) and polyneuropathy (in the UK1 pedigree) could be incidental. The *RAB32* Ser71Arg variant was also identified in three asymptomatic family members, one in TUN2 (aged 77 years at the time of the study) and two in CAN1 (aged 51 and 77 years at the time of the study), and the variant had a non-negligible frequency in gnomAD that suggests penetrance is incomplete. Although incomplete penetrance is typical for monogenic forms of Parkinson's disease, and consistent with a disease mechanism that activates *LRRK2* kinase, penetrance estimates also depend on how carefully non-manifesting heterozygotes are characterised. Therefore, studies on dopaminergic dysfunction in clinically asymptomatic heterozygotes, along with more comprehensive prodromal testing, will be important.

Given the disparate geographical origin of the identified *RAB32* Ser71Arg heterozygotes, it is remarkable that only one Arg71 haplotype was observed (appendix 2, p 5), suggesting that all probands who were genotyped originate from one ancestral founder, reminiscent of *LRRK2* Gly2019Ser.<sup>16</sup>

Neuropathological findings in II-1 from CAN2 revealed mild-to-moderate neuronal loss and neurofibrillary tangle inclusions in the substantia nigra, with no Lewy body pathology. Almost half of *LRRK2* cases examined at autopsy have dopaminergic neuronal loss with gliosis, without the presence of  $\alpha$ -synuclein, which suggests this intracellular inclusion pathology is a secondary phenomenon.<sup>26</sup>

Our initial in-vitro characterisation of the *RAB32* variant Ser71Arg showed that the Arg71 mutant protein does not

disrupt the binding of RAB32 to LRRK2 (appendix 1 pp 12–13), but rather stimulates LRRK2 kinase activity (appendix 1 p 14). This interaction is likely to be mediated by a specific LRRK2–RAB interaction domain (known as “site-1”)<sup>18</sup> because RAB32 Arg71 is no longer able to activate LRRK2 when site-1 is mutated to Leu403 (appendix 1 p 16). Despite these observations, how RAB32 Arg affects the ability of LRRK2 to form an active conformation remains to be determined.

RAB32 is expressed in multiple human tissues, including immune cells and dopaminergic neurons of the brain (appendix 1, p 9). Pathogenic mutations in LRRK2 lead to hyper-phosphorylation of a subset of RAB GTPases proteins, and our *in vitro* studies suggest that RAB32 Arg71 might lead to a similar hyper-phosphorylated state of RAB GTPases (appendix 1, pp 14–17). This in turn, can stall endosomal and lysosomal trafficking, and accelerate the accumulation of intracellular misfolded proteins leading to dopaminergic cell loss and the activation of immune cells, two processes involved in disease progression in Parkinson’s disease.

Our study has limitations. Although, several rare variants were identified in RAB GTPases, including many in RAB32 (appendix 2 pp 3, 4), the power of our sample size was limited for burden testing of all variants in RAB GTPases. Future studies will require much larger case series with matched controls. Nevertheless, RAB32 Ser71Arg was observed in three affected probands and led us to test the *a priori* hypothesis of linkage analysis for a single marker, rather than genome-wide. Although, our sample size was sufficient for rare variant meta-analysis, genome-wide genotyping to match cases with controls could help correct for potential population stratification. To the best of our knowledge, only one individual with the RAB32 Ser71Arg variant has come to autopsy, with sparse neurofibrillary tangle pathology in the midbrain and thalamus, without Lewy body pathology. Similar post-mortem observations have been made in LRRK2 and PINK1 parkinsonism, but further comparisons would be helpful. Our functional studies are limited to *in-vitro* assays that overexpress mutant proteins, so additional studies in knock-in rodent and patient-derived samples are needed for validation.

RAB32 Ser71Arg most likely has an important role in the pathogenesis of Parkinson’s disease. Our results show that RAB32 interacts with LRRK2, and that the RAB32 Ser71Arg pathogenic variant activates LRRK2 kinase, reminiscent of LRRK2 and VPS35 mutations. RAB32 also interacts with known retromer binding partner, VARP,<sup>27</sup> and can colocalise with PINK1 (appendix 1 p 18). However, RAB32 is best described to mediate mitochondrial and lysosome-related pathways,<sup>28</sup> and it is unlikely to be a coincidence that missense mutations in LRRK2, VPS35, and RAB32 all constitutively activate LRRK2 kinase activity. While each gene linked to Parkinson’s disease compromises the age-associated viability of dopaminergic neurons in the substantia

nigra, RAB32 indicates that several of these proteins might have a more intimate synergistic relationship to control pathogen growth in immune cells.<sup>29</sup> Further study in different cellular contexts, of cell autonomous and non-autonomous effects, is imperative. Given the shared ancestral haplotype of affected probands with RAB32 Ser71Arg, and their dispersed geographical origin, we anticipate more heterozygotes with this pathogenic variant can be identified through genotyping array data that has already been generated in GWAS of Parkinson’s disease.<sup>1</sup> The population origin and frequency of those heterozygotes, their genealogic data, affection status, and associated clinical findings might readily inform penetrance estimates, prognosis, and genetic counselling and should be pursued.

#### Contributors

All authors were involved in sample and data acquisition. EKG, JF, and MJF were responsible for the concept and design of the study. EKG, JT, and MJF performed genetic analyses and initial discovery of RAB32 Ser71Arg. AJS, SA-C, MTH, ZG-O, BS, FH, RA, SBS, RT, MS, TBH, AR, RA, and AHR collected samples, clinical and pathological data. MTP, SKB, JT, ZL, JDF, CT, CV-G, TC, MSh, and HRM assisted in data collection and analysis. PL, RR, MGP, MR, AB, MSG, ABW, FH, and MJF oversaw the experiments and data analysis. FT undertook experiments relating to the LRRK2 pathway, which was overseen by DR. EKG and JF wrote the first draft of the manuscript, and all authors participated in editing and revising the manuscript. All authors had full access to all the data in the study, provided final approval of the manuscript content, and had responsibility for the decision to submit the manuscript for publication. EKG, JT, JF, and MJF verified the underlying data.

#### Declaration of interests

AR receives unrestricted research support from the Dr Ali Rajput Endowment for Parkinson’s Disease and Movement Disorders; in the past 2 years AR has received honoraria from Quebec Consortium for Drug Discovery–Brain Canada and Ipsen Biopharmaceuticals Canada. MSG reports grants from National Institutes of Health (NIH)–National Institute of Neurological Disorders and Stroke (NINDS) and the Michael J Fox Foundation for Parkinson’s Research. AJS has received fees from Neurocrine (Chair, Data and Safety Monitoring Board [DSMB]), AskBio (Member, DSMB) and Capsida (advisor), receives a stipend from the International Parkinson’s and Movement Disorders Society (Editor-in-Chief, *Movement Disorders*) and grant funding from Michael J Fox Foundation, Weston Brain Institute, and Brain Canada. ZG-O received consultancy fees from Bial Biotec, Bial, Capsida, Handl Therapeutics, Idorsia, Neuron23, Ono Therapeutics, Preval Therapeutics, UCB, and Vanqua. He reports grants from the Michael J Fox Foundation for Parkinson’s Research, The Weston Family Foundation, The Silverstein Foundation, NIH, and the Canadian Consortium on Neurodegeneration in Aging. HRM is employed by University College Londn. In the last 12 months he reports paid consultancy from Roche, Aprinolia, AI Therapeutics, and Amylyx; lecture fees or honoraria from BMJ, Kyowa Kirin, Movement Disorders Society; and research grants from Parkinson’s UK, Cure Parkinson’s Trust, PSP Association, Medical Research Council, and Michael J Fox Foundation. HRM is a co-applicant on a patent application related to C9ORF72: method for diagnosing a neurodegenerative disease (PCT/GB2012/052140). MJF reports US patents associated with LRRK2 mutations and mouse models (8409809 and 8455243), and methods of treating neurodegenerative disease (20110092565). SA-C has received honoraria from Merz, and grant funding from the Pacific Parkinson’s Research Institute, the Weston Family Foundation, Parkinson Canada, Canadian Institutes of Health Research (CIHR), the VGH and UBC Hospital Foundation, Rick’s Heart Foundation, and the Jack and Darlene Poole Foundation. All other authors declare no competing interests.

**Data sharing**

Exome and array data on the families used in this study are available via the corresponding author, subject to terms on data sharing in their original consents. All GP2 data are hosted in collaboration with the Accelerating Medicines Partnership in Parkinson's Disease (AMP-PD) and are available via application on the AMP-PD website. All Genomics England data are hosted in a cloud. To access the data, researchers must first apply to become a member of either the Genomics England Clinical Interpretation Partnership (academics, students, and clinicians) or the Discovery Forum (industry partners). All AMP-PD data are available through <https://www.amp-pd.org/> and require access approval. Data from the German clinical diagnostic database will be made available on request to manu.sharma@uni-tuebingen.de.

**Acknowledgments**

The authors wish to thank the many patients and their families who volunteered, and the longitudinal efforts of the many clinical teams involved. We thank Tara Candido, for coordinating clinical collaborations, and Daniel M Evans for his bioinformatic work. We thank Saskatchewan Health Authority, Canada, neuropathologists who have provided their services over the years. The authors would also like to thank Gaynor Edwards and Lefkos Middleton for their thoughtful discussions on Parkinson's disease. We are most grateful for data contributed by Clinique Saint-Anne in Quebec, Canada. Subsequent clinical and molecular genetic analysis were supported through Mayo Foundation, GlaxoSmithKline, and NIH (NINDS P50 NS40256; NINDS R21 NS064885; 2005–2009). HRM and RT are supported by Cure Parkinson's Trust and the Janet Owens bequest. Molecular, bioinformatics, and statistical analysis at the Centre for Applied Neurogenetics were funded through the Canada Excellence Research Chairs program (CIHR/IRSC 275675 [2010–17]). We also gratefully acknowledge the Don Rix BC Leadership Chair in Genetic Medicine (2011–19), and the Lee and Lauren Fixel Chair in Parkinson's disease that supported MJF lab research (2019–24). Aligning Science Across Parkinson's (ASAP; grant number: ASAP-000463), the Michael J Fox Foundation for Parkinson's Research and the UK Medical Research Council (grant number MC\_UU\_00018/1), and the pharmaceutical companies supporting the Division of Signal Transduction Therapy Unit (Boehringer Ingelheim, GlaxoSmithKline, Merck KGaA) support the MRC Protein Phosphorylation and Ubiquitylation Unit. Follow-up studies were also supported by ASAP (grant numbers: ASAP-000478 and ASAP-000509) and Michael J Fox Foundation. Data used in the preparation of this article were obtained from Global Parkinson's Genetics Program (GP2). GP2 is also funded by ASAP, implemented by Michael J Fox Foundation. For a complete list of GP2 members see <https://gp2.org>. This research was made possible through access to data in the National Genomic Research Library, which is managed by Genomics England Limited (a wholly owned company of the Department of Health and Social Care). The National Genomic Research Library holds data provided by patients and collected by the UK National Health Service (NHS) as part of their care and data collected as part of their participation in research. The National Genomic Research Library is funded by the National Institute for Health Research and NHS England. The Wellcome Trust, Cancer Research UK, and the Medical Research Council have also funded research infrastructure.

**References**

- Nalls MA, Pankratz N, Lill CM, et al. Large-scale meta-analysis of genome-wide association data identifies six new risk loci for Parkinson's disease. *Nat Genet* 2014; **46**: 989–93.
- Book A, Guella I, Candido T, et al. A meta-analysis of  $\alpha$ -synuclein multiplication in familial parkinsonism. *Front Neurol* 2018; **9**: 1021.
- Polymeropoulou MH, Lavedan C, Leroy E, et al. Mutation in the  $\alpha$ -synuclein gene identified in families with Parkinson's disease. *Science* 1997; **276**: 2045–47.
- Cuervo AM, Stefanis L, Fredenburg R, Lansbury PT, Sulzer D. Impaired degradation of mutant  $\alpha$ -synuclein by chaperone-mediated autophagy. *Science* 2004; **305**: 1292–95.
- Goedert M, Spillantini MG, Del Tredici K, Braak H. 100 years of Lewy pathology. *Nat Rev Neurol* 2013; **9**: 13–24.
- Kitada T, Asakawa S, Hattori N, et al. Mutations in the parkin gene cause autosomal recessive juvenile parkinsonism. *Nature* 1998; **392**: 605–8.
- Valente EM, Abou-Sleiman PM, Caputo V, et al. Hereditary early-onset Parkinson's disease caused by mutations in PINK1. *Science* 2004; **304**: 1158–60.
- Matheoud D, Cannon T, Voisin A, et al. Intestinal infection triggers Parkinson's disease-like symptoms in Pink1<sup>-/-</sup> mice. *Nature* 2019; **571**: 565–69.
- Bu M, Follett J, Deng I, et al. Inhibition of LRRK2 kinase activity rescues deficits in striatal dopamine physiology in VPS35 p.D620N knock-in mice. *NPJ Parkinsons Dis* 2023; **9**: 167.
- Steger M, Tonelli F, Ito G, et al. Phosphoproteomics reveals that Parkinson's disease kinase LRRK2 regulates a subset of RAB GTPases. *eLife* 2016; **5**: e12813.
- Wilson GR, Sim JCH, McLean C, et al. Mutations in RAB39B cause X-linked intellectual disability and early-onset Parkinson disease with  $\alpha$ -synuclein pathology. *Am J Hum Genet* 2014; **95**: 729–35.
- MacLeod DA, Rhinn H, Kuwahara T, et al. RAB7L1 interacts with LRRK2 to modify intraneuronal protein sorting and Parkinson's disease risk. *Neuron* 2013; **77**: 425–39.
- Hughes AJ, Daniel SE, Kilford L, Lees AJ. Accuracy of clinical diagnosis of idiopathic Parkinson's disease: a clinico-pathological study of 100 cases. *J Neurol Neurosurg Psychiatry* 1992; **55**: 181–84.
- Smedley D, Smith KR, Martin A, et al. 100,000 genomes pilot on rare-disease diagnosis in health care—preliminary report. *N Engl J Med* 2021; **385**: 1868–80.
- Jumper J, Evans R, Pritzel A, et al. Highly accurate protein structure prediction with AlphaFold. *Nature* 2021; **596**: 583–89.
- Kachergus J, Mata IF, Hulihan M, et al. Identification of a novel LRRK2 mutation linked to autosomal dominant parkinsonism: evidence of a common founder across European populations. *Am J Hum Genet* 2005; **76**: 672–80.
- Stael S, Miller LP, Fernández-Fernández AD, Van Breusegem F. Detection of damage-activated metacaspase activities by western blot in plants. In: Klemenčić M, Stael S, Huesgen PF, eds. Plant proteases and plant cell death: methods and protocols. New York, NY: Springer US, 2022: 127–37.
- Zhu H, Tonelli F, Turk M, Prescott A, Alessi DR, Sun J. RAB29-dependent asymmetrical activation of leucine-rich repeat kinase 2. *Science* 2023; **382**: 1404–11.
- Sheng Z, Zhang S, Bustos D, et al. Ser1292 autophosphorylation is an indicator of LRRK2 kinase activity and contributes to the cellular effects of PD mutations. *Sci Transl Med* 2012; **4**: 164ra161.
- Abecasis GR, Cherny SS, Cookson WO, Cardon LR. Merlin—rapid analysis of dense genetic maps using sparse gene flow trees. *Nat Genet* 2001; **30**: 97–101.
- Viechtbauer W. Conducting meta-analyses in R with the metafor package. *J Stat Softw* 2010; **36**: 1–48.
- Trinh J, Ramirez CM, Gustavsson E, et al. Identification of new mutations in consanguineous Tunisian Arab-Berber families with Parkinson disease. Poster presented at the American Society of Human Genetics Annual Meeting 2016. October 18–22, 2016, Vancouver, BC, Canada.
- Gustavsson E, Follett J, Ramirez CM, et al. RAB32 as a cause for familial Parkinson's disease. Poster presented at: International Congress of Parkinson's Disease and Movement Disorders; June 4–8, 2017; British Columbia, Canada.
- Trinh J, Zeldenrust FMJ, Huang J, et al. Genotype-phenotype relations for the Parkinson's disease genes SNCA, LRRK2, VPS35: MDSGene systematic review. *Mov Disord* 2018; **33**: 1857–70.
- Bloem BR, Okun MS, Klein C. Parkinson's disease. *Lancet* 2021; **397**: 2284–303.
- Kalia LV, Lang AE, Hazrati LN, et al. Clinical correlations with Lewy body pathology in LRRK2-related Parkinson disease. *JAMA Neurol* 2015; **72**: 100–05.
- Hesketh GG, Pérez-Dorado I, Jackson LP, et al. VARP is recruited on to endosomes by direct interaction with retromer, where together they function in export to the cell surface. *Dev Cell* 2014; **29**: 591–606.
- Solano-Collado V, Rofe A, Spanò S. RAB32 restriction of intracellular bacterial pathogens. *Small GTPases* 2018; **9**: 216–23.
- Lian H, Park D, Chen M, et al. Parkinson's disease kinase LRRK2 coordinates a cell-intrinsic itaconate-dependent defence pathway against intracellular Salmonella. *Nat Microbiol* 2023; **8**: 1880–95.