





# Growing local arm inferred by the breathing motion

Tetsuro Asano <sup>1</sup>, <sup>1</sup>★, Daisuke Kawata <sup>2,3</sup>, Michiko S. Fujii <sup>1</sup> and Junichi Baba <sup>3,4</sup>

<sup>1</sup>Department of Astronomy, Graduate School of Science, The University of Tokyo, 7-3-1 Hongo, Bunkyo-ku, Tokyo 113-0033, Japan

<sup>2</sup>Mullard Space Science Laboratory, University College London, Holmbury St. Mary, Dorking, Surrey RH5 6NT, UK

<sup>3</sup>National Astronomical Observatory of Japan, Mitaka-shi, Tokyo 181-8588, Japan

<sup>4</sup>Amanogawa Galaxy Astronomy Research Center, Kagoshima University, 1-21-35 Korimoto, Kagoshima 890-0065, Japan

Accepted 2023 December 11. Received 2023 December 1; in original form 2023 September 30

## ABSTRACT

Theoretical models of spiral arms suggest that the spiral arms provoke a vertical bulk motion in disc stars. By analysing the breathing motion, a coherent asymmetric vertical motion around the mid-plane of the Milky Way disc, with *Gaia* DR3, we found that a compressing breathing motion presents along the Local arm. On the other hand, with an  $N$ -body simulation of an isolated Milky Way-like disc galaxy, we found that the transient and dynamic spiral arms induce compressing breathing motions when the arms are in the growth phase, while the expanding breathing motion appears in the disruption phase. The observed clear alignment of the compressing breathing motion with the Local arm is similar to what is seen in the growth phase of the simulated spiral arms. Hence, we suggest that the Local arm's compressing breathing motion can be explained by the Local arm being in the growth phase of a transient and dynamic spiral arm. We also identified the tentative signatures of the expanding breathing motion associated with the Perseus arm and also the Outer arm coinciding with the compressing breathing motion. This may infer that the Perseus and Outer arms are in the disruption and growth phases, respectively.

**Key words:** Galaxy: disc – Galaxy: kinematics and dynamics – Galaxy: structure.

## 1 INTRODUCTION

Since Morgan, Sharpless & Osterbrock (1952) first identified spiral arms in the Milky Way (MW), their geometry, structure, and kinematics have been studied with various tracers (Vallée 2017; Shen & Zheng 2020). Observations of O and B-type (OB) stars and H II regions suggest that the MW is a four-arm spiral galaxy (e.g. Georgelin & Georgelin 1976; Urquhart et al. 2014). The very long baseline interferometry observations can measure trigonometric parallaxes of molecular masers associated with young massive stars and provide accurate distances to them (Reid et al. 2014, 2019; VERA Collaboration 2020). Based on these observations which support the four-arm model, the Sun is located between two main arms: the Perseus arm and the Sagittarius–Carina arm, and also close to a minor arm called the Local arm. The distribution of classical Cepheids shows similar pictures about the spiral geometry (Skowron et al. 2019). According to Hou & Han (2014), both three-arm and four-arm logarithmic spiral models can fit the tracers of H II regions, giant molecular clouds and 6.7 GHz methanol masers. On the other hand, observations of old stars in IR wavelength favour a two-stellar-arm model (Drimmel 2000; Benjamin et al. 2005; Churchwell et al. 2009). It is still challenging to fully map the global structures of spiral arms in the Galactic disc.

In a few kpc ranges from the Sun, we can study properties of the spiral arms based on the stellar distribution and kinematics thanks to the precise astrometry of *Gaia* (Gaia Collaboration 2016). Miyachi

et al. (2019) cross-matched the *Gaia* second data release (DR2; Gaia Collaboration 2018a) catalogue with the Two Micron All Sky Survey Point Source Catalogue (Skrutskie et al. 2006) and detected the overdensity of relatively old ( $\sim 1$  Gyr) stars at the Local arm. Poggio et al. (2021) mapped the overdensity of the young upper main-sequence stars using *Gaia* EDR3 (Gaia Collaboration 2021) data. They estimated that the length of the Local arm is at least 8 kpc, which indicates that the Local arm is more significant than previously thought. Face-on maps of the mean in-plane, i.e. radial and tangential, velocities (Eilers et al. 2020; Martínez-Medina, Pérez-Villegas & Peimbert 2022; Almannæi et al. 2023; Gaia Collaboration 2023b) and the median radial action (Palicio et al. 2023) highlight spiral features.

Spiral arms affect not only planar motion but also vertical motion. They are considered to induce vertical bulk motion called the breathing mode (Debattista 2014; Faure, Siebert & Famaey 2014; Monari, Famaey & Siebert 2016a; Monari et al. 2016b; Khachaturyants et al. 2022; Kumar et al. 2022). The breathing mode is coherent vertical oscillation whose vertical velocity field is antisymmetric about the mid-plane. Previous studies (e.g. Widrow et al. 2012; Williams et al. 2013; Gaia Collaboration 2018b; Carrillo et al. 2019; López-Corredoira et al. 2020; Wang et al. 2020; Ghosh, Debattista & Khachaturyants 2022; Widmark, Widrow & Naik 2022; Ardèvol et al. 2023) reported the breathing mode in the Galactic disc. Ghosh, Debattista & Khachaturyants (2022) discovered that the observed breathing amplitude increases with the height from the mid-plane. This trend is expected from the spiral-induced breathing mode (Debattista 2014). Widmark, Widrow & Naik (2022) reported

\* E-mail: t.asano@astron.s.u-tokyo.ac.jp

a tentative evidence of the compressing breathing motion aligned with the Local arm.

The phase spirals are also linked to the bending and breathing modes. Antoja et al. (2018) identified a one-arm phase spiral in the *Gaia* DR2 data (Gaia Collaboration 2018a), while Hunt et al. (2022) discovered a two-arm phase spiral in the inner Galaxy in the *Gaia* DR3 data (Gaia Collaboration 2023a). These are associated with the bending and breathing modes, respectively. The bending mode can be reasonably explained by the passage of the Sagittarius dwarf galaxy. The breathing mode, on the other hand, can be substantially excited by the external perturbation only when the vertical velocity of the perturber is faster than that of the disc stars (Widrow et al. 2014). Theoretical approaches (Banik, Weinberg & van den Bosch 2022; Banik, van den Bosch & Weinberg 2023) based on the linear perturbation theory suggest that the bending mode dominates over the breathing mode in the solar neighbourhood and in the inner Galaxy in the case of the Sagittarius dwarf’s passage. The two-arm phase spiral is likely to originate from internal perturbation, possibly induced by spiral arms (Hunt et al. 2022; Li et al. 2023).

In this *Letter*, we report that the compressing breathing mode is clearly associated with the Local arm in Section 2. In Section 3, we compare the observed breathing pattern with that seen in an  $N$ -body model of MW-like disc galaxy. We demonstrate that the breathing motion can infer the evolution phases of the spiral arms, and the compressing motion observed in the Local arm can be interpreted as the Local arm being in the growth phase. We provide our conclusion in Section 4.

## 2 THE BREATHING MOTION IN THE MW DISC

### 2.1 The *Gaia* data

From the *Gaia* DR3 (Gaia Collaboration 2023a) catalogue, we select the stars that satisfy the following criteria: (1) the relative error in parallax is less than 20 percent, (2) the renormalized unit weight error (*ruwe*) is less than 1.4, (3) the radial velocity is not null. We use  $1/\varpi$  as a distance to a star from the Sun, where  $\varpi$  is the zero-point-corrected parallax (Lindegren et al. 2021). Here, we exclude the data lacking the parameters required for the correction, such as the effective wavenumber (*nu\_eff\_used\_in\_astrometry*). Our resulting sample comprises 26 218 611 stars. We convert the heliocentric coordinate to the Galactocentric coordinate using *astropy.coordinates* from *ASTROPY PYTHON* package (Astropy Collaboration 2022). Here, we assume that the Sun is located at  $(x, y, z) = (-8.277, 0, 0.0208)$  kpc (Bennett & Bovy 2019; GRAVITY Collaboration 2022) and that its velocity is  $(11.1, 251.5, 8.59)$  km s<sup>-1</sup> (Schönrich, Binney & Dehnen 2010; Reid & Brunthaler 2020) in the Galactocentric coordinate.

### 2.2 Face-on breathing map

Fig. 1 shows face-on maps of the Galactic disc made from the *Gaia* data. The left panel shows the number counts of the stars in each bin, whose size is  $0.2 \times 0.2$  kpc<sup>2</sup>. The right panel shows the breathing velocity  $\frac{1}{2}(\bar{v}_{z,>0} - \bar{v}_{z,<0})$ , where  $\bar{v}_{z,>0}$  and  $\bar{v}_{z,<0}$  are the mean vertical velocities of the stars within  $0 < z < 1.5$  kpc and  $-1.5 < z < 0$  kpc, respectively. We plot the locations of the spiral arms: Outer arm, Perseus arm, Local arm, Sagittarius–Carina arm and Scutum–Centaurus arm from left to right. The locations are based on the spiral arms traced by the massive star-forming regions (Reid et al. 2019), but we add an offset of 0.127 kpc in the radial direction because they assume a Sun–Galactic centre distance different from ours. The

number counts are significantly affected by the selection bias, and therefore, it is difficult to find intrinsic overdensity or underdensity from this map. On the other hand, the right panel exhibits some breathing patterns. The most distinct structure is a compression area (indicated by the blue colour) extending from the upper right corner of the panel to the point near the Sun. Remarkably, this pattern closely aligns with the Local arm highlighted with the cyan line in Fig. 1. This is likely indicating that the Local arm induces the compressing breathing mode.

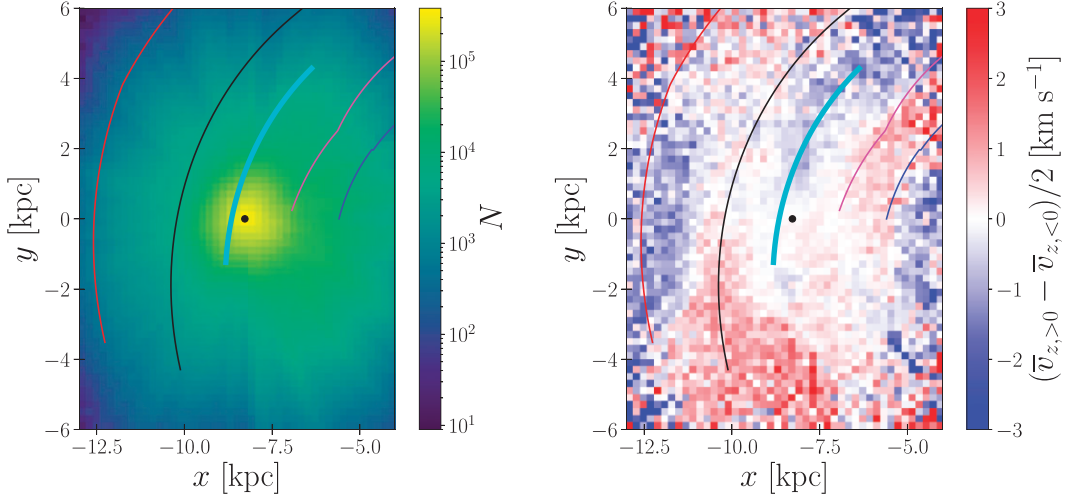
The identical structure can be seen in the (red giant branch) RGB star sample in fig. 23 of Gaia Collaboration (2023b). They noted that the expanding breathing motion observed in their OB star sample possibly aligns with the Local arm. However, the amplitude of this expansion is smaller than that of the compressing breathing motion seen in the RGB star sample. Additionally, the association with the arm is less distinct in the OB star sample compared to the RGB star sample. Recently, Ardèvol et al. (2023) reported a breathing mode in the  $60^\circ \leq l \leq 75^\circ$  direction for the A star sample. They probably have captured the same structure in a different view, but they did not discuss the association with the spiral arm. Widmark, Widrow & Naik (2022) also discussed a tentative alignment between the Local arm and the compressing breathing mode. They highlighted the offset of the compressing breathing mode from their derived stellar density excess, which is not in the same location as where suggested in Reid et al. (2014). The true location of the Local arm is still in debate. Because our result shown in Fig. 1 presents even more clear alignment with the Local arm position suggested by Reid et al. (2019) than previously shown, in this *Letter* we consider that the location of the Local arm is where suggested in Reid et al. (2019). In Section 3, we show that with this assumption the Local arm is well explained with the dynamic spiral arm scenario seen in  $N$ -body simulations.

While the Local arm exhibits a clear connection between the compressing breathing motion, the other spiral arms are more weakly associated with the breathing motion. The area between the Sagittarius–Carina arm and the Scutum–Centaurus arm exhibits the expanding breathing motion (indicated by the red colour). Outside of the Local arm, a large area of the expansion breathing mode exists, and it looks to partially coincide with the Perseus arm. We see compression zones in the outer Galaxy ( $R \gtrsim 12$  kpc) and in the inner Galaxy ( $R \lesssim 5$  kpc). The Outer arm passes through the outer one. The inner one is not associated with any spiral arms but is near the bar end. One possibility is that it is driven by the bar. Theoretical studies show that both bars and spiral arms can excite breathing mode (Monari, Famaey & Siebert 2015; Monari et al. 2016b; Banik, van den Bosch & Weinberg 2023). However, this is beyond the scope of this *Letter*, and the further studies are encouraged.

## 3 BREATHING MOTION IN $N$ -BODY SIMULATION

### 3.1 $N$ -body simulation

We use an isolated MW-like  $N$ -body model, MWaB, simulated by Fujii et al. (2019). It consists of a DM halo, a classical bulge, and an exponential disc. They made the initial condition with GALACTICS (Kuijken & Dubinski 1995; Widrow & Dubinski 2005; Widrow, Pym & Dubinski 2008). 5.1 billion equal-mass particles of  $\sim 178 M_\odot$  represent the model. The halo initially follows the Navarro–Frenk–White profile (Navarro, Frenk & White 1997), whose mass within  $\sim 200$  kpc and scale radius are  $8.68 \times 10^{11} M_\odot$  and 10 kpc, respectively. The bulge follows the Hernquist profile (Hernquist 1990), whose mass and scale radius are  $5.43 \times 10^9 M_\odot$



**Figure 1.** Face-on maps from the *Gaia* data. *Left:* Number counts. *Right:* Breathing velocity. Solid lines indicate the position of the spiral arms: Outer arm, Perseus arm, Local arm, Sagittarius–Carina arm and Scutum–Centaurus arm from left to right, from Reid et al. (2019). The black dot indicates the position of the Sun.

and 0.75 kpc, respectively. The density profile of the disc is radially exponential and vertically isothermal (i.e.  $\text{sech}^2$  profile). The disc mass, scale radius, and scale height are  $3.75 \times 10^{10} M_{\odot}$ , 2.3 kpc, and 0.2 kpc, respectively. The simulation was performed with the parallel (graphics processing unit) GPU tree-code BONSAI (Bédorf, Gaburov & Portegies Zwart 2012; Bédorf et al. 2014) for 10 Gyr. For more details on the simulations, see Fujii et al. (2019).

### 3.2 Breathing motion in $N$ -body simulation

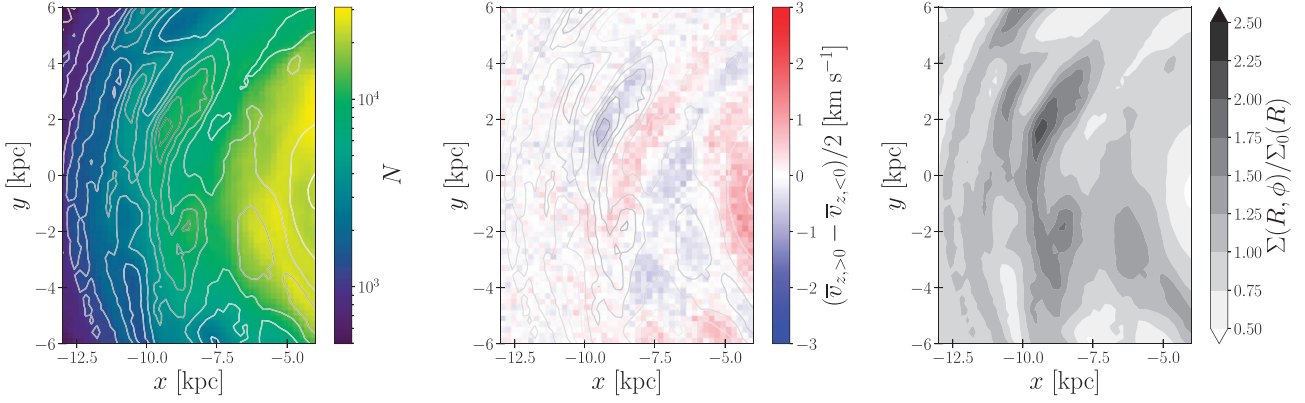
The left and middle panels of Fig. 2 show a comparable plot to Fig. 1 created from the  $N$ -body model at  $t = 4.216$  Gyr. The simulated galaxy has a bar, and the angle between its major axis and the  $x$ -axis is  $25^\circ$ , like the MW. However, the bar is small and does not appear in this plot. Regarding the local stellar kinematics in the solar neighbourhood (Asano et al. 2020, 2022) and the global dynamical structure (Fujii et al. 2019), the snapshots in the later epoch ( $t \gtrsim 8$  Gyr) of the simulation better reproduce the observed properties such as the local and bulge velocity dispersions of the stars in the MW. However, in this epoch, the spiral arms are fainter due to the dynamical heating of the disc, and the strength of the spiral arms is underestimated. In this *Letter*, we focus on the spiral-induced breathing motion, therefore, we have analysed the earlier snapshots which show prominent spiral structure. We have selected the snapshot at  $t = 4.216$  Gyr because it exhibits the spiral arm geometrically most similar to that around the Sun. The contour map in the right panel displays the normalized surface density  $\Sigma(R, \phi)/\Sigma_0(R)$ , where  $\Sigma(R, \phi)$  and  $\Sigma_0(R)$  are the surface density and the azimuthally averaged surface density profile, respectively. To estimate  $\Sigma_0(R)$ , we calculate the averaged surface densities for 40 annuli between  $R = 5$  kpc and 13 kpc and fit them with an exponential profile. The fitted scale radius of 2.4 kpc is comparable to that for the initial condition of the stellar disc. The same contour is overplotted on the left and middle panels. The middle panel shows the breathing velocity. The breathing mode is clearly correlated with the spiral arms. The compression mode and the expansion mode appear in the arm and interarm regions, respectively. In the outer galaxy, the arms are weak and the breathing velocity is almost zero.

The middle panel of Fig. 2 shows that the spiral arm seen in the middle of the panel is qualitatively similar to what is seen around

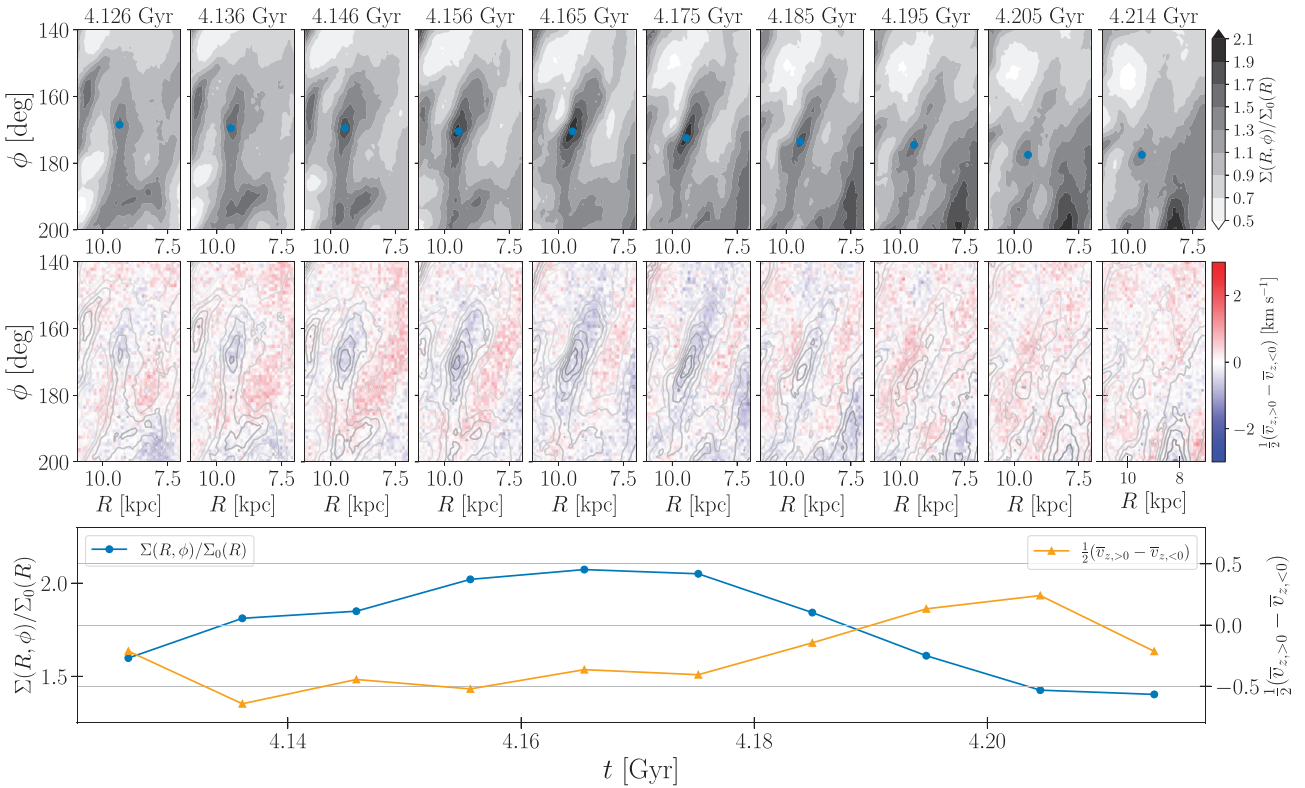
the Local arm in the right panel of Fig. 1, although the amplitude of the breathing velocity is smaller than the observed one. The *Gaia*'s selection bias can explain this difference. The intrinsic amplitude of the spiral-induced breathing mode should increase with height from the mid-plane (Debattista 2014), and this trend has been partially confirmed in the *Gaia* DR2 data (Gaia Collaboration 2018b; Ghosh, Debattista & Khachatryan 2022). In the *Gaia* data, stars at higher heights from the mid-plane are preferentially sampled at the region of the further distance from the Sun, because the completeness of the *Gaia* data is lower at low Galactic latitudes at a farther distance due to the dust extinction. As a result, a higher amplitude of the breathing velocity is expected. In fact, the breathing amplitude in the solar neighbourhood ( $\lesssim 1$  kpc) is smaller than in the distant region because the data are more complete in the mid-plane. In Appendix A, we quantitatively assess the impact of the selection bias by applying *Gaia*'s selection function to the  $N$ -body simulation data. As a result, our analysis indicates a tendency for the breathing amplitude to increase due to the influence of *Gaia*'s selection function.

### 3.3 Time evolution of spiral arms and breathing mode

We further investigate how the dynamic spiral arms and breathing mode in the  $N$ -body model evolve with time. In Fig. 3, we present the normalized surface density  $\Sigma(R, \phi)/\Sigma_0(R)$  (first row) and the breathing velocity  $\frac{1}{2}(\bar{v}_{z, > 0} - \bar{v}_{z, < 0})$  (second row) around the spiral arm located at the centre of Fig. 2 for ten sequential time-steps ranging from  $t = 4.126$  Gyr to 4.214 Gyr. These maps are shown in a frame rotating at an angular velocity of  $27 \text{ km s}^{-1} \text{ kpc}^{-1}$ , which is the circular frequency at  $R \sim 9$  kpc. The galaxy rotates in the direction in which  $\phi$  decreases. The first (left hand) and last (right hand) five columns correspond to the growth and disruption phases of this highlighted spiral arm, respectively. We trace the peak surface density (indicated by blue points in the top panels) and the breathing velocity there and present their time evolution in the bottom panel of Fig. 3. The amplitude of the compressing breathing mode at the arm region increases as the arm grows. At the same time, a large expansion of breathing velocity appears at the trailing side of the arm. The compressing amplitude decreases rapidly during the disruption phase. In the last three snapshots ( $t = 4.195, 4.205, \text{ and } 4.214$  Gyr), both the spiral arm and breathing mode become weaker.



**Figure 2.** Face-on maps from the  $N$ -body model. *Left panel* shows the number counts. *Middle panel* shows the breathing velocity. *Right panel* shows the contour map of the normalized surface density  $\Sigma(R, \phi)/\Sigma_0(R)$ , where  $\Sigma(R, \phi)$  and  $\Sigma_0(R)$  are the 2D surface density and the exponential surface density, respectively. The same contours are shown in the other two panels.



**Figure 3.** Time evolution of a spiral arm and the associated breathing motion. *Top panels* shows the normalized surface density in the ten snapshots between  $t = 4.126$  Gyr and 4.214 Gyr. The density maps are shown in the frame rotating with the circular frequency at  $R \sim 9$  kpc on  $R$ - $\phi$  plane. The galaxy rotates in the direction in which  $\phi$  decreases. *Middle panels* shows the breathing velocity. The contours of the upper panels are overlotted. *Bottom panel* shows the normalized surface density and the breathing velocity at the points indicated by blue dots in the top panels as functions of time.

The breathing mode reaches almost zero or even weakly positive value, i.e. expansion. In the last snapshot, the spiral arm almost disappears, but still identifiable. Hence, the dynamic spiral can also coincide with the expanding breathing mode in the disrupting phase.

The previous theoretical studies of the breathing mode due to the spiral arms were based on the density-wave theory of the spiral arm. Debattista (2014) showed that stars move towards (away from) the mid-plane when they enter (leave) the spiral arms, if the spiral arms are like density-wave, and the stars rotate with significantly different speed from the pattern speed of the spiral arms. Therefore,

the compressing (expanding) breathing mode appears at the trailing (leading) side of the arm inside the co-rotation radius, and the opposite trend appears outside the co-rotation radius. They confirmed this phenomenon through investigation in an  $N$ -body disc model which has grand-designed spiral arms with a well-defined single pattern speed. In an analytical model (Monari, Famaey & Siebert 2016a) and test particle simulations (Faure, Siebert & Famaey 2014; Monari, Famaey & Siebert 2016a), it is also shown that stellar motion is compressing and expanding at the trailing and leading



sides, respectively, when the co-rotation radius is at outside of the disc.

Contrary to these previous studies, in our model, the compressing motion is confined to the arm, and there is no systematic displacement. This is because in our simulation the spiral arms are transient and dynamic spiral arms, as seen in many  $N$ -body simulations (e.g. Sellwood & Carlberg 1984; Baba et al. 2009; Fujii et al. 2011; Wada, Baba & Saitoh 2011; Grand, Kawata & Cropper 2012a, b; Baba, Saitoh & Wada 2013; D’Onghia, Vogelsberger & Hernquist 2013; Baba 2015). In the dynamic spiral arms, the spiral-arm features co-rotate with the disc stars at every radius. Hence, as a result, the compression due to the spiral arms coincides with the density contrast of the spiral arm, unlike the offset expected from the density wave-like spiral arms.

The alignment between the Local arm and the compression mode in the *Gaia* data in Fig. 1 is striking. Based on the result of our simulation and similarity to the observed trend, we are tempted to suggest that the Local arm is a spiral arm strong enough to induce the compressing breathing mode, and it is a co-rotating dynamic arm like what we can find in the  $N$ -body simulations. Then, the compressing breathing motion in the Local arm indicates that the Local arm is in the growth phase of the dynamic arm.

#### 4 DISCUSSION AND CONCLUSION

In this *Letter*, we have reported the detection of the breathing mode associated with the spiral arms, especially the striking coincidence of the compression mode in the Local arm, in the *Gaia* data. We have also identified a similar compressing breathing pattern in growing spiral arms in the isolated  $N$ -body disc model. If the real spiral arms of the MW are similar to this dynamic nature, we can conclude that the observed compressing breathing motion aligned well with the Local arm infers the growth phase of dynamic spiral arms. The strong compressing breathing feature in the Local arm also indicates that the Local arm is not a minor spiral arm but a major strong arm that influences even the vertical velocity field of the stars.

In contrast to the Local arm, the Perseus arm coincides with the expanding breathing mode (see the right panel of Fig. 1). This implies that the Perseus arm is in the disrupting phase. Baba et al. (2018) discovered that velocities of classical Cepheids around the Perseus arm show a sign of the disruption phase expected from the dynamic spiral arm model (Baba, Saitoh & Wada 2013; Baba 2015). The indication from the expanding breathing mode is consistent with this picture. Applying the same inference from our  $N$ -body simulation result, the Outer arm can be considered as a growth phase, and the Sagittarius–Carina arm and the Scutum–Centaurus arm may be disrupting. This may indicate that the MW harbours the different phases of the dynamic spiral arms, which is naturally seen in  $N$ -body simulations (Funakoshi et al. in preparation). We note that inferring the evolutionary phases of the arms in the inner Galaxy is more challenging, because they are near the bar end, and the combined effect of the spiral arms and the bar makes the vertical stellar motion more complex (Monari et al. 2016b). Further studies of the impacts of interference between the bar and spiral arms to the vertical motions are encouraged to comprehensively understand the fascinating nature of the Galactic disc structure.

#### ACKNOWLEDGEMENTS

We thank the anonymous referee for the useful comments. This work has made use of data from the European Space Agency (ESA) mission *Gaia* (<https://www.cosmos.esa.int/gaia>), processed

by the *Gaia* Data Processing and Analysis Consortium (DPAC, <https://www.cosmos.esa.int/web/gaia/dpac/consortium>). Funding for the DPAC has been provided by national institutions, in particular, the institutions participating in the *Gaia* Multilateral Agreement. Simulations were performed using GPU clusters, HA-PACS at Tsukuba University, Piz Daint at the Swiss National Supercomputing Centre, and Little Green Machine II. TA is supported by Japan Society for the Promotion of Science (JSPS) Research Fellowships for Young Scientists. This work was supported by Grant-in-Aid for JSPS Fellows no. JP22J11943, the UK’s Science & Technology Facilities Council (STFC grant no. ST/S000216/1, ST/W001136/1) and MWGaiaDN, a Horizon Europe Marie Skłodowska-Curie Actions Doctoral Network funded under grant agreement no. 101072454 and also funded by UK Research and Innovation (EP/X031756/1).

#### DATA AVAILABILITY

The simulation snapshots are available at <http://galaxies.astron.s.u-tokyo.ac.jp>. The other data and code used in this paper will be shared on reasonable request to the corresponding author.

#### REFERENCES

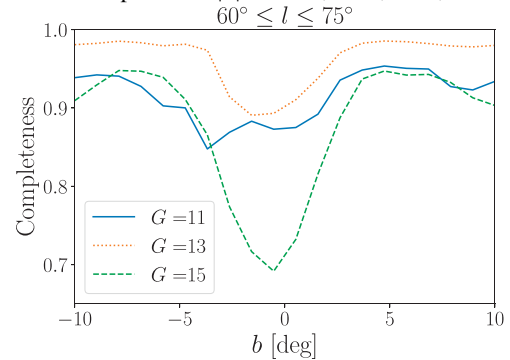
- Almannaei A. S., Kawata D., Baba J., Hunt J. A. S., Seabroke G., Yan Z., 2023, preprint (arXiv:2310.06831)
- Antoja T. et al., 2018, *Nature*, 561, 360
- Ardèvol J., Monguió M., Figueras F., Romero-Gómez M., Carrasco J. M., 2023, *A&A*, 678, A111
- Asano T., Fujii M. S., Baba J., Bédorf J., Sellentin E., Portegies Zwart S., 2020, *MNRAS*, 499, 2416
- Asano T., Fujii M. S., Baba J., Bédorf J., Sellentin E., Portegies Zwart S., 2022, *MNRAS*, 514, 460
- Astropy Collaboration, 2022, *ApJ*, 935, 167
- Baba J., 2015, *MNRAS*, 454, 2954
- Baba J., Asaki Y., Makino J., Miyoshi M., Saitoh T. R., Wada K., 2009, *ApJ*, 706, 471
- Baba J., Saitoh T. R., Wada K., 2013, *ApJ*, 763, 46
- Baba J., Kawata D., Matsunaga N., Grand R. J. J., Hunt J. A. S., 2018, *ApJ*, 853, L23
- Banik U., Weinberg M. D., van den Bosch F. C., 2022, *ApJ*, 935, 135
- Banik U., van den Bosch F. C., Weinberg M. D., 2023, *ApJ*, 952, 65
- Bédorf J., Gaburov E., Portegies Zwart S., 2012, *J. Comput. Phys.*, 231, 2825
- Bédorf J., Gaburov E., Fujii M. S., Nitadori K., Ishiyama T., Portegies Zwart S., 2014, Proc. Int. Conf. High Perform. Comput. IEEE, New Orleans, p. 54
- Benjamin R. A. et al., 2005, *ApJ*, 630, L149
- Bennett M., Bovy J., 2019, *MNRAS*, 482, 1417
- Cantat-Gaudin T. et al., 2023, *A&A*, 669, A55
- Carrillo I. et al., 2019, *MNRAS*, 490, 797
- Castro-Ginard A. et al., 2023, *A&A*, 677, A37
- Churchwell E. et al., 2009, *PASP*, 121, 213
- D’Onghia E., Vogelsberger M., Hernquist L., 2013, *ApJ*, 766, 34
- Debatista V. P., 2014, *MNRAS*, 443, L1
- Drimmel R., 2000, *A&A*, 358, L13
- Eilers A.-C., Hogg D. W., Rix H.-W., Frankel N., Hunt J. A. S., Fouvry J.-B., Buck T., 2020, *ApJ*, 900, 186
- Faure C., Siebert A., Famaey B., 2014, *MNRAS*, 440, 2564
- Fujii M. S., Baba J., Saitoh T. R., Makino J., Kokubo E., Wada K., 2011, *ApJ*, 730, 109
- Fujii M. S., Bédorf J., Baba J., Portegies Zwart S., 2019, *MNRAS*, 482, 1983
- GRAVITY Collaboration, 2022, *A&A*, 657, L12
- Gaia Collaboration, 2016, *A&A*, 595, A1
- Gaia Collaboration, 2018a, *A&A*, 616, A1
- Gaia Collaboration, 2018b, *A&A*, 616, A11
- Gaia Collaboration, 2021, *A&A*, 649, A1

- Gaia Collaboration, 2023a, *A&A*, 674, A1  
 Gaia Collaboration, 2023b, *A&A*, 674, A37  
 Geogelin Y. M., Geogelin Y. P., 1976, *A&A*, 49, 57  
 Ghosh S., Debattista V. P., Khachaturyants T., 2022, *MNRAS*, 511, 784  
 Grand R. J. J., Kawata D., Cropper M., 2012a, *MNRAS*, 421, 1529  
 Grand R. J. J., Kawata D., Cropper M., 2012b, *MNRAS*, 426, 167  
 Hernquist L., 1990, *ApJ*, 356, 359  
 Hou L. G., Han J. L., 2014, *A&A*, 569, A125  
 Hunt J. A. S., Price-Whelan A. M., Johnston K. V., Darragh-Ford E., 2022, *MNRAS*, 516, L7  
 Khachaturyants T., Debattista V. P., Ghosh S., Beraldo e Silva L., Daniel K. J., 2022, *MNRAS*, 517, L55  
 Kuijken K., Dubinski J., 1995, *MNRAS*, 277, 1341  
 Kumar A., Ghosh S., Kataria S. K., Das M., Debattista V. P., 2022, *MNRAS*, 516, 1114  
 Li C., Siebert A., Monari G., Famaey B., Rozier S., 2023, *MNRAS*, 524, 6331  
 Lindegren L. et al., 2021, *A&A*, 649, A4  
 López-Corredoira M., Garzón F., Wang H. F., Sylos Labini F., Nagy R., Chrobáková Ž., Chang J., Villarroel B., 2020, *A&A*, 634, A66  
 Martínez-Medina L., Pérez-Villegas A., Peimbert A., 2022, *MNRAS*, 512, 1574  
 Miyachi Y., Sakai N., Kawata D., Baba J., Honma M., Matsunaga N., Fujisawa K., 2019, *ApJ*, 882, 48  
 Monari G., Famaey B., Siebert A., 2015, *MNRAS*, 452, 747  
 Monari G., Famaey B., Siebert A., 2016a, *MNRAS*, 457, 2569  
 Monari G., Famaey B., Siebert A., Grand R. J. J., Kawata D., Boily C., 2016b, *MNRAS*, 461, 3835  
 Morgan W. W., Sharpless S., Osterbrock D., 1952, *AJ*, 57, 3  
 Navarro J. F., Frenk C. S., White S. D. M., 1997, *ApJ*, 490, 493  
 Palicio P. A., Recio-Blanco A., Poggio E., Antoja T., McMillan P. J., Spitoni E., 2023, *A&A*, 670, L7  
 Poggio E. et al., 2021, *A&A*, 651, A104  
 Reid M. J., Brunthaler A., 2020, *ApJ*, 892, 39  
 Reid M. J. et al., 2014, *ApJ*, 783, 130  
 Reid M. J. et al., 2019, *ApJ*, 885, 131  
 Schönrich R., Binney J., Dehnen W., 2010, *MNRAS*, 403, 1829  
 Sellwood J. A., Carlberg R. G., 1984, *ApJ*, 282, 61  
 Shen J., Zheng X.-W., 2020, *Res. Astron. Astrophys.*, 20, 159  
 Skowron D. M. et al., 2019, *Science*, 365, 478  
 Skrutskie M. F. et al., 2006, *AJ*, 131, 1163  
 Urquhart J. S., Figura C. C., Moore T. J. T., Hoare M. G., Lumsden S. L., Mottram J. C., Thompson M. A., Oudmaijer R. D., 2014, *MNRAS*, 437, 1791  
 VERA Collaboration, 2020, *PASJ*, 72, 50  
 Vallée J. P., 2017, *Astron. Rev.*, 13, 113  
 Wada K., Baba J., Saitoh T. R., 2011, *ApJ*, 735, 1  
 Wang H. F. et al., 2020, *MNRAS*, 491, 2104  
 Widmark A., Widrow L. M., Naik A., 2022, *A&A*, 668, A95  
 Widrow L. M., Dubinski J., 2005, *ApJ*, 631, 838  
 Widrow L. M., Pym B., Dubinski J., 2008, *ApJ*, 679, 1239  
 Widrow L. M., Gardner S., Yanny B., Dodelson S., Chen H.-Y., 2012, *ApJ*, 750, L41  
 Widrow L. M., Barber J., Chequers M. H., Cheng E., 2014, *MNRAS*, 440, 1971  
 Williams M. E. K. et al., 2013, *MNRAS*, 436, 101

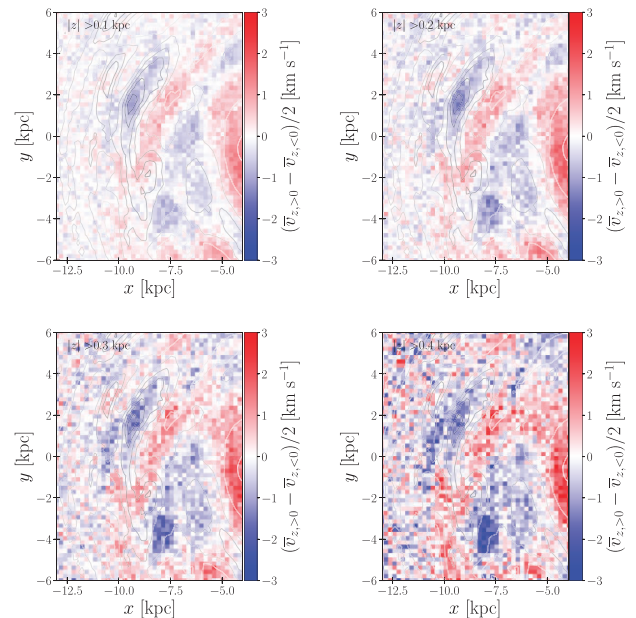
## APPENDIX A: SELECTION EFFECTS

Fig. A1 shows the selection function for the *Gaia* DR3 radial velocity sample (Cantat-Gaudin et al. 2023; Castro-Ginard et al. 2023) in the range of  $60^\circ \leq l \leq 75^\circ$ , corresponding to the line-of-sight direction to the Local arm. We plot the completeness as a function of  $b$  for

$G = 11, 13,$  and  $15$ , with the  $G - G_{\text{RP}}$  colour fixed at 1. We use GAIANLIMITED PYTHON package to make the plot. The completeness decreases towards the mid-plane at  $|b| \lesssim 5^\circ$ . The Galactic latitude of  $|b| = 5^\circ$  corresponds to  $|z| = 0.09, 0.17, 0.26,$  and  $0.35$  kpc



**Figure A1.** Selection function for the *Gaia* DR3 radial velocity sample at  $60^\circ \leq l \leq 75^\circ$ .



**Figure A2.** Face-on maps of the breathing velocity for the particles at  $|z| > 0.1$  (upper left),  $0.2$  (upper right),  $0.3$  (lower left), and  $0.4$  (lower right) kpc.

at the heliocentric distances  $d = 1, 2, 3,$  and  $4$  kpc, respectively. Fig. A2 shows the face-on maps of the breathing velocity in the  $N$ -body model, as in the middle panel of Fig. 2, but here we use the particles only at  $|z| > z_{\text{lim}}$  ( $= 0.1, 0.2, 0.3,$  and  $0.4$  kpc). This figure demonstrates how the selection bias affects the observed breathing velocity. As the limiting height  $z_{\text{lim}}$  increases, the amplitude of the breathing velocity increases. The selection effect can explain the trend that the amplitude of the breathing velocity in the region distant from the Sun is larger than that in the solar neighbourhood as seen in Fig. 1.

This paper has been typeset from a  $\text{\TeX}/\text{\LaTeX}$  file prepared by the author.