

Dopamine Protects Neurons against Glutamate-Induced Excitotoxicity

E. I. Fedotova^{1*}, A. Y. Abramov², A. V. Berezhnov^{1***}

¹*Institute of Cell Biophysics of the Russian Academy of Sciences, Pushchino, Moscow oblast,
142290 Russia*

²*Department of Clinical and Movement Neurosciences, UCL Queen Square Institute of
Neurology, London, WC1N 3BG UK*

e-mail: delf-fenka@rambler.ru*; **e-mail: g_56@rambler.ru*

Abstract. Parkinson's disease is associated with neuronal loss in the midbrain and the resulting development of dopamine-deficient states. At the later stages of the disease, increased neuronal death is also observed in other parts of the brain. We hypothesized that dopamine may function as a glutamate antagonist, and dopamine deficiency may increase glutamate-induced excitotoxicity. Using rat hippocampal primary culture and fluorescence microscopy, we show that dopamine reduces the amplitude of calcium response evoked by the activation of NMDA receptors but does not affect calcium signals mediated by AMPA and KA receptors. Voltage-gated calcium channels are also unaffected by dopamine. It was shown that the effect of dopamine depends not only on NMDA receptors, but also on D2-type dopamine receptors and on the GABAA receptor. Dopamine reduced glutamate-induced mitochondrial depolarization and improved neuronal survival in the presence of toxic levels of glutamate. The data presented suggest a protective role of dopamine against glutamate toxicity.

Keywords: dopamine, glutamate, calcium, excitotoxicity, ionotropic glutamate receptors, neuroprotection

INTRODUCTION

Dopamine is a neurotransmitter involved in the regulation of various brain functions. The disturbances of dopamine metabolism and signaling lead to the development of neurodegenerative diseases such as Parkinson's disease, Alzheimer's disease, schizophrenia. In Parkinson's disease dopaminergic neurons loss is observed mainly in *substantia nigra* [1].

Dopamine is able to suppress a cytosolic calcium ($[Ca^{2+}]_i$) increase induced by glutamate. The glutamate is the most abundant excitatory neurotransmitter in the brain, which becomes toxic and causes pathological conditions when accumulates in high concentration [2]. During the

development of Parkinson's disease, which is characterized by a dopamine deficiency, it is possible that even low doses of glutamate can lead to neurodegeneration. It is established that glutamate mediates a number of glutamate receptors subtypes, including ionotropic (NMDA-, AMPA- and KA-receptors) ligand-gated ion channels and which are activated by specific agonists, and metabotropic (mGlu1–mGlu8) G-protein coupled receptors [3].

Dopaminergic functions are mediated by activation of a family of dopamine receptors, consisting of five types and belonging to two groups: D1-like receptors (D1 and D5) and D2-like receptors (D2, D3 and D4). D1-like receptors are G_s-coupled serpentine receptors that regulate the release of neurotransmitters such as glutamate, GABA, and acetylcholine. D2-like receptors are coupled G_{i/o} and regulate the secretion of dopamine in neurons in response to its extracellular level [4].

It is known that the interplay between dopaminergic and glutamatergic systems provides the basis for complex neural interactions in the brain. Activation of D1- and D2-like receptors can regulate the function and transport of NMDA-receptors. Thus, dopamine receptors interact with NMDA-receptors directly or indirectly through the activation of protein kinase A and can influence NMDA-responses in neurons [5].

We assumed that dopamine could act against glutamate neurotoxicity, because the addition of dopamine to hippocampal cell culture reduces glutamate-induced [Ca²⁺]_i and mitochondrial depolarization and increases the number of live cells after exposure to toxic glutamate levels. In order to determine the target of dopamine action, we investigated its effect on the amplitude of calcium responses (ACR) caused by agonists of glutamate and dopamine receptors.

MATERIALS AND METHODS

Culture of neurons. The primary culture of the rat hippocampal cells was obtained from the brain of newborn *Sprague Dawley* rat pups (P1–P3). After decapitation the hippocampus was removed and placed in a cold HBSS according to the method described in [6]. Then the tissue was cut into small pieces, incubated in 0.1% trypsin solution for 15 min at 37°C, washed three times with Neurobasal-A medium (Gibco, United States) containing 2% Supplement B27 (Gibco), 1 mM *L*-glutamine (Sigma, United States), 7.5 µg/ml gentamicin (Dalkhimpharm, Russia), dissociated using a pipette until the formation of cell suspension. After that, the cells were placed on round coverslips (25 mm in diameter) covered with polyethyleneimine (Fluka, United States) in 35 mm Petri dishes. After 1 h, 1.5 ml of Neurobasal culture medium was added to the attached cells and incubated for 5–12 days at 37°C and 5% CO₂.

The experiments were carried out in HBSS containing (in mM): 138 NaCl, 1.3 CaCl₂, 0.4 MgSO₄, 0.5 MgCl₂, 5.3 KCl, 0.45 KH₂PO₄, 4 NaHCO₃, 0.3 Na₂HPO₄, 10 glucose, 20 HEPES (pH 7.3) at a temperature of 27–28°C. The experiments with NMDA were carried out in Mg²⁺-free medium.

Intracellular calcium concentration ($[Ca^{2+}]_i$) measurement. Changes in $[Ca^{2+}]_i$ in neurons were assessed by the fluorescence intensity of a ratiometric Ca^{2+} -sensitive probe Fura-2 [7]. The cell culture was loaded with 5 μ M Fura-2AM (Invitrogen, United States) for 60 min followed by washing. $[Ca^{2+}]_i$ was detected using an imaging system based on Leica DMI6000B inverted motorized microscope (Leica Microsystems, Germany) equipped with a Leica HC PL APO 20 \times /0.7 IMM objective. A set of FU2 light filters (excitation: 340 ± 6 and 380 ± 10 nm, emission: 510 ± 20 nm) was used to excite and detect Fura-2 fluorescence. We also used a Cell Observer (Carl Zeiss, Germany) imaging system based on Axiovert 200M inverted microscope equipped with a Plan Neofluar 10 \times /0.3. Fura-2 fluorescence was excited and recorded using a Filter set 21HE (excitation: 340 ± 6 and 380 ± 10 nm, emission: 510 ± 20 nm). Images were obtained at a frequency of 1 frame per 3 s. The two-channel time lapses were processed in ImageJ using the Time Series Analyzer plugin. The amplitude of calcium responses (ACR) in individual cells was estimated as the ratio of Fura-2 fluorescence signals upon excitation at 340 and 380 nm. In the experiment, the calcium signal from 100–200 neurons in the field of view of the microscope was measured.

For the experiment, a coverslip with a cell culture was mounted in a measuring chamber and kept in 0.5 ml HBSS. Additions of reagents and washing-out were carried out using a perfusion system consisting of a feeding tip connected to the tanks with solutions and a tip connected to a water jet pump and providing a constant level of the medium in the measuring chamber. The tips were located on opposite sides of the chamber. In order to change the bathing solution the perfusion system was turned on for 8 s, that provided a tenfold (5 ml) replacement of the working solution in the chamber. Washing was carried out in the same way. Control experiments with an optically dense dye (trypan blue) showed that under these conditions a complete (more than 98%) replacement of the solution in the measuring chamber occurs. This protocol for changing solutions is the result of optimization and ensures that cells do not respond to mechanical stress when changing the medium. Nevertheless, to assess the possible reaction of the cells, a control washing with 5 ml of HBSS was carried out at the beginning of each experiment to prove the absence of $[Ca^{2+}]_i$ -changes during medium replacement.

To compare the results of experiments performed on different days and on different cultures, to normalize the signals in the experimental scheme, and to functionally separate neurons and glial cells in culture, a standard depolarizing solution of KCl was added to the cells. In this study, we used a technique for evaluating the modulating effect of various compounds on the activity of ionotropic glutamate receptors – NMDA-, AMPA-, and KA-receptors [8], which is based on the fact that several short-term (20–30 s) additions of agonists of these receptors at intervals of 10-15 min cause calcium signals of the same amplitude. This makes it possible to use the signal in

response to the first addition as a control, and to test the effect of one or another compound on the second signal (Fig. 1a). The ACRs were measured relative to the initial value before the addition. In the case of activation of KA-receptors, experiments were carried out in the presence of an inhibitor of AMPA-receptors 30 μ M GYKI-52466 (Tocris, UK), since kainic acid (KA, Sigma) is a nonselective agonist of KA- and AMPA-receptors, and an inhibitor of desensitization of KA-receptors 200 μ M concanavalin A (ConA, Sigma). The selective agonist of AMPA-receptors 5-fluorowillardiine (FW, Santa Cruz Biotechnology, United States) and the inhibitor of AMPA-receptor desensitization 5 μ M cyclothiazide (CTZ, Tocris) were used to activate AMP-receptors (Fig. 1b) [8].

Measurement of mitochondrial membrane potential. Cells were loaded with a fluorescent voltage sensitive probe 20 μ M Rhodamine 123 (Rh123, Sigma) for 10 min for registration mitochondrial potential. Then cells were washed twice with HBSS and used in the experiment. The measurements were performed using a Cell Observer (Carl Zeiss) imaging system based on an Axiovert 200M inverted microscope equipped with a Plan Neofluar 10 \times /0.3 objective. Rh123 fluorescence was excited and recorded using a Filter set 44 (excitation: 490 ± 6 nm, emission: 550 ± 20 nm). The experiments used a staining protocol based on dye concentration-dependent fluorescence quenching in energized mitochondria; an increase in Rh123 fluorescence is observed upon depolarization of mitochondrial membranes [9]. Images were obtained at a frequency of 1 frame per 5 s, and processed in ImageJ using the Time Series Analyzer plugin. The signal from 100–200 neurons in the field of view of the microscope was measured in the experiment. To normalize the signals in the experimental scheme, the addition of 2 μ M FCCP (Sigma) was provided to achieve the complete mitochondrial depolarization.

Cell viability assessment. The number of living cells in the neuroglial culture was assessed using double staining with fluorescent dyes Hoechst 33342 (2 μ g/mL, Sigma) and Propidium Iodide (PI, 2 μ g/mL, Sigma) for 10 min, followed by washing with HBSS. Dye fluorescence was assessed using an imaging system based on a Leica DMI6000B inverted motorized microscope (Leica Microsystems) equipped with a Leica HC PL APO 20 \times /0.7 IMM objective. A set of DAPI light filters (excitation: 340 ± 6 nm, emission: 470 ± 20 nm) was used for excitation and registration of Hoechst fluorescence; for PI, a set of Texas Red light filters (excitation: 575 ± 10 nm, emission: 624 ± 10 nm). Cells were counted in two channels in the ImageJ using the Cell Counter plugin. The Hoechst dye enters cells and binds to DNA, that allows evaluate the nuclear morphology. In contrast, the PI dye only penetrates damaged or fixed cells. When the signal from Hoechst and PI was colocalized, indicating a violation of the barrier function of the plasmalemma, we considered the death cells, and nuclei are fragmented, brightly glowing in the blue (Hoechst) channel, that indicated apoptosis. The data were presented as the percentage of death and apoptotic cells of the

total number of cells in the field of view. The fluorescent signal from 300–600 neuroglial culture cells was measured in the experiment.

Processing of results. For plotting and statistical processing, the OriginPro2019 and GraphPadPrizm8 programs were used using one-way ANOVA (post hoc Turkey test) parametric analysis. The graphs show representative curves, the number of cells in one experiment $N = 100$ – 140 , the number of experiments of the same type: $n = 3$ – 4 . Data in bars are presented as mean \pm standard deviation of mean, statistically significant differences at * $p < 0.05$.

RESULTS

Dopamine suppresses the glutamate-induced $[Ca^{2+}]_i$ increase in neurons. It was shown previously that dopamine is able to suppress the $[Ca^{2+}]_i$ -increase that occurs in response to low doses of glutamate ($5 \mu\text{M}$) [10]. In this study, we tested whether dopamine could protect cells from the action of higher concentrations of glutamate, 50 and $100 \mu\text{M}$, which are known to be toxic. We assessed the ability of dopamine to influence the ACR to glutamate using a previously developed method for assessing the modulating effect of various compounds on the activity of ionotropic glutamate receptors – NMDA-, AMPA-, and KA-receptors [8]. We utilized a protocol providing repetitive in shape and amplitude $[Ca^{2+}]_i$ increase in response to selective and short-term activation of certain glutamatergic receptor. It was shown in the study that dopamine at a concentration of $50 \mu\text{M}$ is able to reduce the ACR to the second addition of $10 \mu\text{M}$ glutamate by 19% . Thus, the addition of glutamate in the presence of dopamine was $81 \pm 13\%$ compared to the first addition of glutamate (in Figs. *2a*, *2b* the response to glutamate was taken as 100%). In the case of high doses of glutamate (100 and $50 \mu\text{M}$), the glutamate-induced calcium response also decreased by 28% ($72 \pm 22\%$) in the presence of dopamine (Figs. *2b*, *2c*). This effect may lead to the prevention of glutamate-induced calcium overload of cells and thus be neuroprotective under conditions of excitotoxicity.

In order to identify which receptor subtype is involved in this effect, we tested how dopamine affects the amplitude of calcium signals caused by selective activation of ionotropic glutamate receptors: NMDA-, AMPA-, and KA-receptors. At the same time, the NMDA-receptor is permeable to Ca^{2+} itself, and the activation of AMPA- and KA-receptors is mainly mediated by the activation of voltage-gated calcium channels [11]. Dopamine has been shown to suppress the activity of NMDA-receptors without affecting the activity of KA- and AMPA-receptors. Here we show that dopamine at a concentration of $10 \mu\text{M}$ suppresses the calcium signal induced by the low doses of NMDA (5 and $10 \mu\text{M}$) by 23% ($77 \pm 23\%$ relative to the first control response, Figs. *3a*, *5b*). Under the action of high concentrations of NMDA (50 and $100 \mu\text{M}$), dopamine suppresses ACR to this agonist by 15% (Fig. *3b*).

It has been shown that dopamine does not influence the calcium signal in response to the KA-receptor agonist kainic acid (in the presence of the AMPA-receptor antagonist GYKI-52466, KA+GYKI). The ACR to the second application was $101 \pm 22\%$ relative to the first signal (Figs. 4a, 5b). Also, dopamine does not affect the activity of AMPA-receptors, since the dopamine application did not change ACR to fluorowillardiine (FW), a AMPA-receptor selective agonist ($98 \pm 13\%$) (Figs. 4b, 5b). To prevent receptors desensitization experiments were performed in the presence of 200 $\mu\text{g}/\text{mL}$ concanavalin A or 5 μM cyclothiazide in the case of KA- and AMPA-receptor respectively [8].

We also tested whether the ACR caused by the activation of voltage-gated calcium channels (VGCC) changes in response to dopamine. It was shown that the addition of dopamine does not influence the ACR that occur under the action of 35 mM potassium chloride, which activates VGCC (Figs. 5a, 5b). Thus, the Ca^{2+} response to the second KCl application was $82 \pm 11\%$ relative to the control; and this value was $80 \pm 10\%$ in the presence of dopamine.

Thus, it was found that the main target of dopamine is NMDA-receptor.

Involvement of dopamine receptors. It is known that dopamine directly suppresses the activity of the NMDA-receptor; its action can also be mediated by activation of specific dopamine receptors [4, 12].

We tested whether D1- and D2-like receptor antagonists are able to prevent the effect of dopamine on the NMDA-induced calcium signal in neurons. Fig. 6 shows that the effect of dopamine is not prevented in the presence of SKF-83566 (50 μM), a D1-receptors blocker, this is evidenced by the decrease in the amplitude of the calcium response under the combined action of NMDA and dopamine in the presence of SKF-83566 ($76 \pm 26\%$, Figs. 6a, 6c). The application of the D1-receptor agonist SKF-38393 (50 μM) did not lead to a significant change in the calcium signal in response to NMDA ($98 \pm 26\%$, Figs. 6a, 6c).

In the case of the action of the D2-receptor inhibitor L-741,626 (1 μM), dopamine effect was not observed: the calcium signal to the second addition of NMDA was $100 \pm 28\%$ (Figs. 6b, 6c), and the addition of the D2-receptor agonist Quinpirole (100 nM) to the cells reduces the calcium signal induced by NMDA ($86 \pm 15\%$, Figs. 6b, 6c). This suggests that the action of dopamine is mediated by the activation of the G_i -coupled D2-receptor.

Thus, it became clear that dopamine exerts its inhibitory effect on the activity of the NMDA-receptor through the activation of the D2-receptor.

Previously, it was shown that the effect of this neurotransmitter is cancelled by inhibitors of GABA(A)-receptors [13, 14]. In this study, we found that 10 μM bicuculine (a GABA-receptor inhibitor) together with 10 μM dopamine did not suppress the calcium signal to NMDA application (Fig. 7).

Dopamine protects mitochondria from glutamate-induced depolarization. It is known that the toxic effect of glutamate is based on an increase in the level of cytosolic calcium in neurons, which is characterized by the so-called delayed calcium dysregulation (DCD), occurring due to the suppression of ATP production in mitochondria and the inability of cells to maintain ion homeostasis. In this case, a characteristic feature is the depolarization of mitochondria [2]. We tested whether dopamine affects glutamate-induced mitochondrial depolarization. It was shown that glutamate induces mitochondrial depolarization by $15 \pm 7\%$ in the presence of dopamine less than in the control (Figs. 8a, 8b). Thus, the amplitude of the change in Rhodamine 123 (Rh123) fluorescence was 0.40 ± 0.12 in response to glutamate, while this value was 0.35 ± 0.11 after pretreatment with dopamine (the data are normalized relative to the signal in response to $2 \mu\text{M}$ FCCP, which causes complete depolarization of mitochondria).

Dopamine inhibits glutamate excitotoxicity. In order to confirm the protective role of dopamine under the action of toxic doses of glutamate, we carried out experiments to study the neuronal survival. It was shown that glutamate at a concentration of $100 \mu\text{M}$ causes the death of $30.0 \pm 1.7\%$ of neurons in culture after 24 hours of exposure, that is significantly higher than in the control (non-treated cells, $18.1 \pm 1.6\%$) (Fig. 9). If dopamine is present in the incubation medium at a concentration of $10 \mu\text{M}$, the number of damaged neurons decreases by 53% after 24 hours. Thus, this value under the combined action of glutamate and dopamine was $14.2 \pm 1.6\%$. Incubation with dopamine did not significantly affect the number of damaged cells relative to the control ($17.1 \pm 1.7\%$).

Thus, dopamine reduces glutamate-induced mitochondrial depolarization and improves cell viability in culture, thereby exerting a neuroprotective effect on cells.

DISCUSSION

In this study using fluorescence microscopy and inhibitory analysis it was shown that dopamine is neuroprotective against glutamate toxicity in hippocampal cell cultures. In particular, dopamine at a concentration of $10 \mu\text{M}$ reduces ACR to glutamate, primarily due to the suppression of the activity of NMDA-receptor, a subtype of ionotropic glutamate receptors. In addition, dopamine prevents the development of glutamate-induced mitochondrial depolarization and increases neuronal survival in the presence of toxic glutamate levels. This effect depends on the activity of D2-like dopamine receptors but does not depend on D1-like receptors. It has also been shown that the effect of dopamine on glutamate-induced changes in the studied cell parameters is mostly determined by the activation of GABAergic system, since the effect of dopamine also depends on the activity of the GABA(A)-receptor (see also our previous study [14]). It was shown that the discovered effect of dopamine is sensitive to GABA(A)-receptor antagonist bicuculine since the

presence of 10 μ M bicuculine in the bathing solution completely suppresses the effect of dopamine on the NMDA-induced calcium signal in neurons.

Several possible mechanisms can be proposed to explain the protective effect of dopamine.

First, dopamine can act via the direct interaction with the NMDA-receptor channel. Studies have shown that dopamine receptor ligands, including dopamine itself, as well as other monoamines, can interact with the NMDA-receptor, acting as voltage-dependent blockers of the open state of the receptor and having a binding site inside the NMDA-receptor channel [15,16].

Secondly, dopamine through the receptor causes hyperpolarization of neurons. In 1986, it was shown on neurons of the *nucleus accumbens* that dopamine is able to induce D1-receptor-dependent hyperpolarization in most neurons; in addition, depolarization mediated by activation of D2-receptors was observed [17]. Our experiments help to expand our understanding of these neurotransmitters interplay mechanisms. So, one of the targets of dopamine is the D2-receptor. However, blocking two types of receptors (D1- and D2- receptors), we did not see the abolition of the dopamine action. Perhaps this is due to the fact that this effect is not only mediated by these types of receptors.

It is also known that dopamine can affect AMPA-receptors, but this occurs at the level of modulation of their externalization. In this case, dopamine activates the incorporation of GluR1 subunits into the plasma membrane of neurons in a D1-receptor-dependent manner [18, 19]. Our data on the effect of dopamine on calcium signals in response to the activation of KA- and NMDA-receptors are in some conflict with the data of the authors [20]. In this study, it was demonstrated that although dopamine protects cells from kainate-induced neurotoxicity, the mechanisms associated with the modulation of calcium homeostasis are not involved in this effect. Moreover, NMDA-receptor activity was not regulated by dopamine at all. In contrast, we found that the effect of dopamine is associated with the NMDA-receptor, while the calcium response upon activation of the KA-receptor was not affected by dopamine.

CONCLUSION

We have shown that dopamine has a neuroprotective effect against glutamate neurotoxicity, since the addition of dopamine to the hippocampal cell culture reduces the calcium response and mitochondrial depolarization caused by the addition of glutamate and increases the number of viable cells after exposure to glutamate. We also found that dopamine, acting through D2-like receptors, is able to activate NMDA-receptors and influence the functioning of the GABAergic system.

FUNDING

This work was supported by the Russian Science Foundation (project no. 22-24-01043).

COMPLIANCE WITH ETHICAL STANDARDS

The authors declare that they have no conflict of interest.

All procedures were performed in accordance with the European Communities Council Directive (November 24, 1986; 86/609/EEC) and the Declaration on human treatment of animals. The Protocol of experiments was approved by the Guidelines for Working with Laboratory Animals of the ICB RAS No. 57 (December 30, 2011).

REFERENCES

1. Winklhofer K.F., Haass C. 2010. Mitochondrial dysfunction in Parkinson's disease. *Biochim. Biophys. Acta.* **1802** (1), 29–44. doi 10.1016/j.bbadis.2009.08.013
2. Khodorov B. 2004. Glutamate-induced deregulation of calcium homeostasis and mitochondrial dysfunction in mammalian central neurones. *Biophys. Mol. Biol.* **86** (2), 279–351. doi 10.1016/j.pbiomolbio.2003.10.002
3. Meldrum B.S. 2000. Glutamate as a neurotransmitter in the brain: Review of physiology and pathology. *J. Nutr.* **130** (4S), 1007S–15S. doi 10.1093/jn/130.4.1007S
4. Gasiorowska A., Wydrych M., Drapich P., Zadrozny M., Steczkowska M., Niewiadomski W., Niewiadomska G. 2021. The biology and pathobiology of glutamatergic, cholinergic, and dopaminergic signaling in the aging brain. *Front Aging Neurosci.* **13**, 654931. doi: 10.3389/fnagi.2021.654931
5. Wang M., Wong A.H., Liu F. 2012. Interactions between NMDA and dopamine receptors: A potential therapeutic target. *Brain Research.* **1476**, 154–163. doi 10.1016/j.brainres.2012.03.029
6. Berezhnov A.V., Kononov A.V., Fedotova E.I., Zinchenko V.P. 2011. A Method for Detection and Characterization of GABA(A) Receptor Ligands Using Calcium-Sensitive Fluorescent Probes. *Biophysics.* **56** (4), 660–667.
7. Grynkiewicz G., Poenie M., Tsien R.Y. 1985. A new generation of Ca²⁺ indicators with greatly improved fluorescence properties. *J. Biol. Chem.* **260** (6), 3440–3450.
8. Berezhnov A.V., Kononov A.V., Fedotova E.I., Zinchenko V.P. 2013. Application Of Imaging Technique For Characterization Of Ionotropic Glutamate Receptor Ligands In Cultured Neurons. *Biochemistry (Moscow) Supplement. Series A: Membrane and Cell Biology.* **7** (3), 213–221.

9. Kahlert S., Zündorf G., Reiser G. 2008. Detection of de- and hyperpolarization of mitochondria of cultured astrocytes and neurons by the cationic fluorescent dye rhodamine 123. *J. Neurosci. Methods*. **171** (1), 87–92. doi 10.1016/j.jneumeth.2008.02.0157
10. Vaarmann A., Kovac S., Holmström K.M., Gandhi S., Abramov A.Y. 2013. Dopamine protects neurons against glutamate-induced excitotoxicity. *Cell Death Dis.* **4** (1), e455. doi 10.1038/cddis.2012.194.9
11. Ferreira I.L., Duarte C.B., Carvalho A.P. 1996. Ca²⁺ influx through glutamate receptor-associated channels in retina cells correlates with neuronal cell death. *Eur. J. Pharmacol.* **302** (1–3), 153–162. doi 10.1016/0014-2999(96)00044-1
12. Castro N.G., de Mello M.C., de Mello F.G., Aracava Y. 1999. Direct inhibition of the N-methyl-D-aspartate receptor channel by dopamine and (+)-SKF38393. *Br. J. Pharmacol.* **126** (8), 1847–1855. doi:10.1038/sj.bjp.0702479
13. Lau C.G., Takeuchi K., Rodenas-Ruano A., Takayasu Y., Murphy J., Bennett M.V., Zukin R.S. 2009. Regulation of NMDA receptor Ca²⁺ signalling and synaptic plasticity. *Biochem. Soc. Trans.* **37** (Pt 6), 1369–1374. doi 10.1042/BST0371369
14. Berezhnov A.V., Fedotova E.I., Sergeev A.I., Teplov I.Y., Abramov A.Y. 2021. Dopamine controls neuronal spontaneous calcium oscillations via astrocytic signal. *Cell Calcium*. **94**, 102359. doi 10.1016/j.ceca.2021.102359
15. Cui C., Xu M., Atzori M. 2006. Voltage-dependent block of N-methyl-D-aspartate receptors by dopamine D1 receptor ligands. *Mol. Pharmacol.* **70** (5), 1761–1770. doi: 10.1124/mol.106.028332
16. Masuko T., Suzuki I., Kizawa Y., Kusama-Eguchi K., Watanabe K., Kashiwagi K., Igarashi K., Kusama T. 2004. Monoamines directly inhibit N-methyl-D-aspartate receptors expressed in *Xenopus* oocytes in a voltage-dependent manner. *Neurosci Lett.* **371** (1), 30–33. doi: 10.1016/j.neulet.2004.08.030
17. Uchimura N., Higashi H., Nishi S. 1986. Hyperpolarizing and depolarizing actions of dopamine via D-1 and D-2 receptors on nucleus accumbens neurons. *Brain Res.* **375** (2), 368–372. doi: 10.1016/0006-8993(86)90760-2
18. Mangiavacchi S., Wolf M.E. 2004. D1 dopamine receptor stimulation increases the rate of AMPA receptor insertion onto the surface of cultured nucleus accumbens neurons through a pathway dependent on protein kinase A. *J. Neurochem.* **88** (5), 1261–1271. doi 10.1046/j.1471-4159.2003.02248.x
19. Sun X., Zhao Y., Wolf M.E. 2005. Dopamine receptor stimulation modulates AMPA receptor synaptic insertion in prefrontal cortex neurons. *J. Neurosci.* **25** (32), 7342–7351. doi 10.1523/JNEUROSCI.4603-04.2005

20. Amano T., Ujihara H. Matsubayashi H., Sasa M., Yokota T., Tamura Y., Akaike A. 1994. Dopamine-induced protection of striatal neurons against kainate receptor-mediated glutamate cytotoxicity in vitro. *Brain Res.* **655** (1–2), 61–69. doi 10.1016/0006-8993(94)91597-0

Figure captions.

Fig. 1. Experimental scheme to determine dopamine effect on the ACR caused by agonists of glutamate receptors and KCl, based on a previously developed method [8]. *a* – for glutamate, NMDA, and KCl; *b* – for KA and AMPA.

Keys:

- (a) Без Mg^{2+} (для NMDA) – Mg^{2+} -free (for NMDA)
Глутамат, NMDA или KCl – Glutamate, NMDA or KCl
Антагонист D1-, D2-, ГАМК_A-рецептора – D1-, D2-, GABA(A)-receptor antagonist
Дофамин или агонист D1-, D2-рецептора – Dopamine or D1-, D2-receptor agonist
Время, с – Time, s
- (b) ConA или CTZ – ConA or CTZ
КА+ГҮКІ или FW – KA+GYKI or FW
Дофамин – Dopamine
Время, с – Time, s

Fig. 2. Effect of dopamine on the amplitude of the calcium signal in response to glutamate in neurons. *a* – repetitive calcium signals in neurons to short-term additions of 10 μM glutamate (blue curve) and the effect of 50 μM dopamine on the signal in cells in response to glutamate application (red curve); normalized relative to the first addition of glutamate; *b* – calcium signal in response to 100 μM glutamate in the presence (red curve) and in the absence of dopamine (50 μM , blue curve); normalized for response to glutamate. *c* – amplitude of the calcium signal in response to the addition of glutamate 10 and 50–100 μM in the absence (–dop) and presence of 50 μM dopamine (+dop). In the case of 10 μM glutamate, responses to the second glutamate supplement (Glutamate 2) are presented relative to the responses to the first supplement (Glutamate 1). In the case of high doses of glutamate (50–100 μM), the calcium response to glutamate together with dopamine (Glutamate+dop) is presented relative to the response to glutamate without dopamine (Glutamate–dop). * $p < 0.05$.

Keys:

- (a) Глутамат, 10 мкМ – Glutamate, 10 μM
Дофамин, 50 мкМ – Dopamine, 50 μM
Fura-2, 340/380, отн. ед. – Fura-2, 340/380, r.u.
Время, с – Time, s

- (b) Глутамат, 100 мкМ – Glutamate, 100 μ М
 –Дофамин – –Dopamine
 +Дофамин, 50 мкМ – +Dopamine, 50 μ М
 Fura-2, 340/380, отн. ед. – Fura-2, 340/380, r.u.
 Время, с – Time, s
- (c) Глутамат 10 мкМ – Glutamate, 10 μ М
 Глутамат 50 и 100 мкМ – Glutamate, 50 and 10 μ М
 –Дофамин – –Dopamine
 +Дофамин, 50 мкМ – +Dopamine, 50 μ М
 Амплитуда Ca^{2+} -сигнала, % – Amplitude of calcium response, %
 Глутамат1 – Glutamate1
 Глутамат2 – доф – Glutamate2 – dop
 Глутамат2 + доф – Glutamate2 + dop
 Глутамат – доф – Glutamate – dop
 Глутамат + доф – Glutamate + dop

Fig. 3. Effect of dopamine on the amplitude of the calcium signal induced by NMDA in neurons. *a* – calcium signal in response to the addition of 10 μ М NMDA in the absence (blue curve) and in the presence (red curve) of 50 μ М dopamine; normalized relative to the first NMDA application. *b* – calcium signal in response to the addition of 100 μ М NMDA in the absence (blue curve) and in the presence (red curve) of 50 μ М dopamine.

Keys:

- (a) NMDA, 10 мкМ – NMDA, 10 μ М
 Дофамин, 10 мкМ – Dopamine, 10 μ М
 Fura-2, 340/380, отн. ед. – Fura-2, 340/380, r.u.
 Время, с – Time, s
- (b) NMDA, 100 мкМ – NMDA, 100 μ М
 –Дофамин – –Dopamine
 +Дофамин, 50 мкМ – +Dopamine, 50 μ М
 Fura-2, 340/380, отн. ед. – Fura-2, 340/380, r.u.
 Время, с – Time, s

Fig. 4. Effect of dopamine on the amplitude of the calcium signal caused by the activation of KA- and AMPA-receptors in neurons. *a* – calcium signal in response to the addition of 10 μ М kainic

acid (КА) together with 30 μM GYKI in the absence (blue curve) and in the presence (red curve) of 50 μM dopamine; normalized relative to the first application of КА+GYKI. *b* – calcium signal in response to the addition of 500 nM fluorowillardiine (FW) in the absence (blue curve) and in the presence (red curve) of 50 μM dopamine; normalized with respect to the first application of FW.

Keys:

(a) КА, 10 мкМ + GYKI, 30 мкМ – КА, 10 μM + GYKI, 30 μM

Дофамин, 10 мкМ – Dopamine, 10 μM

Fura-2, 340/380, отн. ед. – Fura-2, 340/380, r.u.

Время, с – Time, s

(b) FW, 500 нМ – FW, 500 nM

Дофамин, 10 мкМ – Dopamine, 10 μM

Fura-2, 340/380, отн. ед. – Fura-2, 340/380, r.u.

Время, с – Time, s

Fig. 5. Effect of dopamine on the amplitude of the calcium signal caused by agonists of glutamate receptors and KCl. *a* – calcium signal in response to the addition of 35 mM KCl in the absence (blue curve) and in the presence (red curve) of 50 μM dopamine; normalized with respect to the first application of KCl. *b* – amplitudes of calcium signals in response to additions of NMDA, КА, АМРА, and KCl in the absence (black columns, –dop) and in the presence (red columns) of 50 μM dopamine (+dop) relative to the first addition to the agonist, KCl1 – the first addition of KCl, KCl2 is the second addition of KCl, * $p < 0.05$.

Keys:

(a) KCl, 35 мМ – KCl, 35 mM

Дофамин, 10 мкМ – Dopamine, 10 μM

Fura-2, 340/380, отн. ед. – Fura-2, 340/380, r.u.

Время, с – Time, s

(b) Амплитуда Ca^{2+} -сигнала, % – Amplitude of calcium response, %

– доф – – dop

+ доф – + dop

Fig. 6. Effect of D1- and D2-receptor agonists and antagonists on the calcium response induced by NMDA. *a* – calcium signal in response to 10 μM NMDA in the presence of 50 μM D1-receptor

agonist SKF-38393 (blue curve) and 50 μM D1-receptor antagonist SKF-83588 together with dopamine (red curve); normalized relative to the first NMDA application. *b* – calcium signal in response to 10 μM NMDA in the presence of 100 nM D2-receptor agonist Quinpirole (red curve) and 1 μM D2-receptor antagonists L-741,626 together with dopamine (blue curve); normalized relative to the first NMDA application. *c* – amplitudes of calcium responses induced by NMDA in the presence of D1- and D2-receptor activators and their blockers together with dopamine (+dop) relative to the first addition of NMDA (100%), * $p < 0.05$.

Keys:

(a) NMDA, 10 μM – NMDA, 10 μM

Дофамин, 10 μM – Dopamine, 10 μM

SKF-38393, 50 μM – SKF-38393, 50 μM

SKF-83566, 50 μM – SKF-83566, 50 μM

Fura-2, 340/380, отн. ед. – Fura-2, 340/380, r.u.

Время, с – Time, s

(b) NMDA, 10 μM – NMDA, 10 μM

Дофамин, 10 μM – Dopamine, 10 μM

Quinpirole, 100 нМ – Quinpirole, 100 нМ

L-741,626, 1 μM – L-741,626, 1 μM

Fura-2, 340/380, отн. ед. – Fura-2, 340/380, r.u.

Время, с – Time, s

(c) Амплитуда Ca^{2+} -сигнала, % – Amplitude of calcium response, %

–доф – –dop

+ доф – +dop

SKF-83 + доф – SKF-83 + dop

L741 + доф – L741 + dop

Fig. 7. Effect of GABA(A)-receptor activity on the calcium response induced by NMDA. Calcium signal in response to 10 μM NMDA in the presence of 10 μM GABA(A)-receptor inhibitor bicuculline with 10 μM dopamine (red curve) and in the absence of bicuculline but with dopamine (blue curve); normalized relative to the first NMDA application.

Keys:

NMDA, 10 μM – NMDA, 10 μM

Дофамин, 10 μM – Dopamine, 10 μM

биккулин, 10 мкМ – bicuculline, 10 μM
Fura-2, 340/380, отн. ед. – Fura-2, 340/380, r.u.
Время, с – Time, s

Fig. 8. Effect of dopamine on glutamate-induced mitochondrial depolarization in rat hippocampal neurons. *a* – change in the fluorescence of rhodamine 123 (Rh123) induced by 50 and 100 μM glutamate in the presence (blue and red curves) and in the absence (blue and pink curves) of 50 μM dopamine; normalized to FCCP. *b* – amplitude of change in mitochondrial potential caused by a short-term addition of 50 and 100 μM glutamate (Glut, 50 μM and 100 μM) in the absence (black columns, –dop) and in the presence (red columns) of 50 μM dopamine (+dop), data presented correspond to the scheme of the experiment with the washing out of glutamate (*a* – red and pink curves), * $p < 0.05$.

Keys:

(a) Глутамат, 100 мкМ – Glutamate, 100 μM

Глутамат, 50 мкМ – Glutamate, 50 μM

–Дофамин – –Dopamine

+Дофамин, 50 мкМ – +Dopamine, 50 μM

FCCP, 2 мкМ – FCCP, 2 μM

Rh123, отн. ед. – Rh123, r.u.

Время, с – Time, s

(b) Амплитуда митохондриального потенциала, отн. ед. – Amplitude of mitochondrial potential, r.u.

ГЛУТ, 50 мкМ – Glut, 50 μM

ГЛУТ, 50,100 мкМ – Glut, 50, 100 μM

ГЛУТ, 100 мкМ – Glut, 100 μM

–доф – –dop

+доф – +dop

Fig. 9. Effect of dopamine on the viability of cells in neuroglial culture of the rat hippocampus. The degree of damaged cells: dead (yellow) and apoptotic (blue), relative to the total number of cells in the field of view (%) after 24 h of incubation with 100 μM glutamate, 10 μM dopamine and with glutamate and dopamine together, * $p < 0.05$ comparing all non-viable cells (dead + apoptotic).

Рис. 1

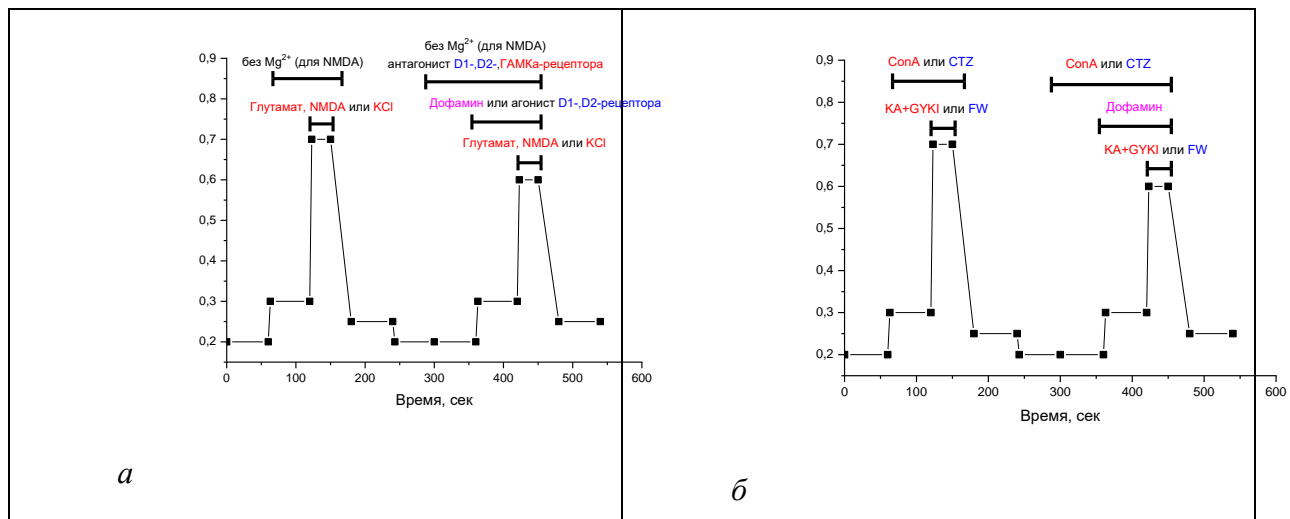


Рис. 2.

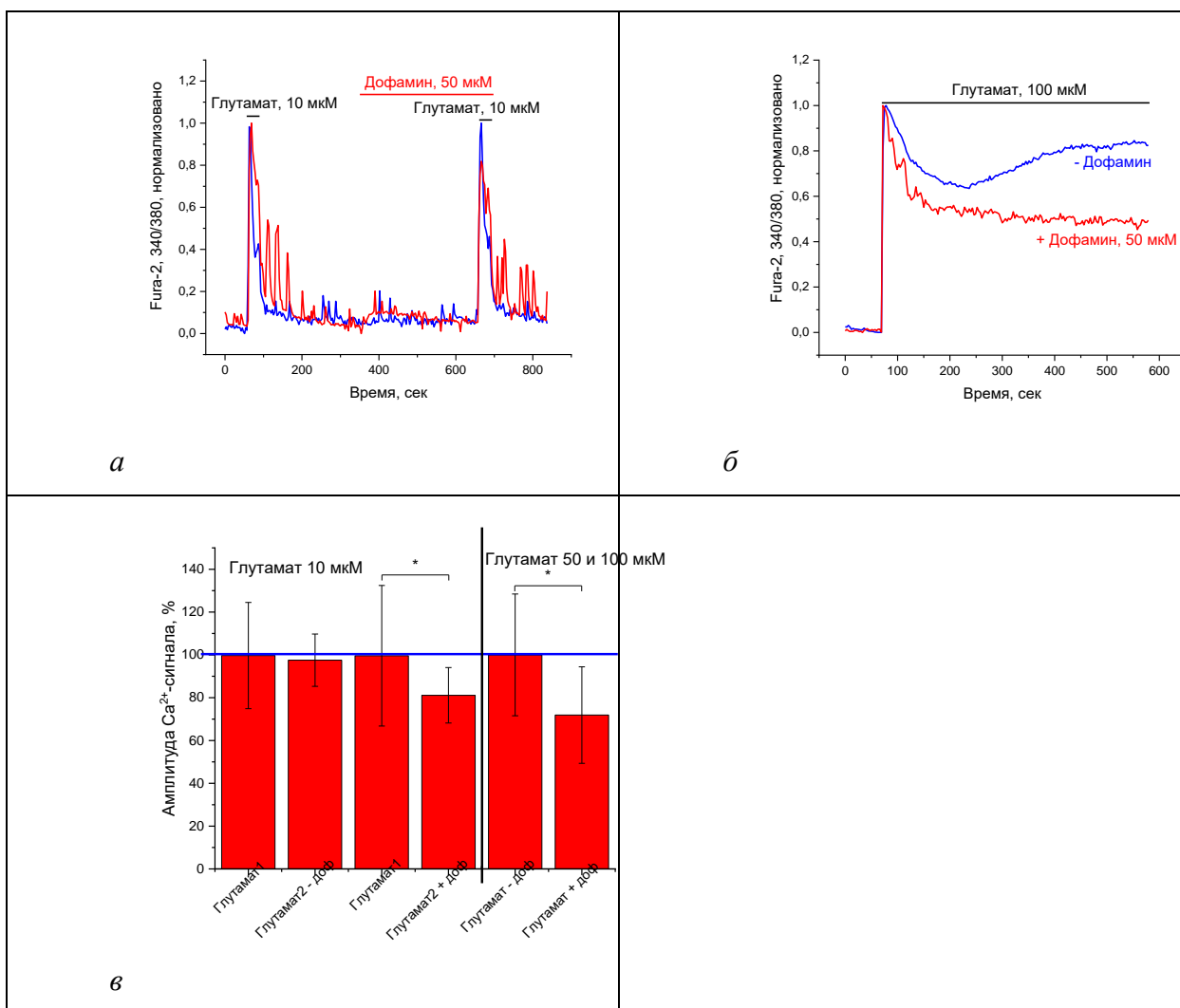


Рис. 3.

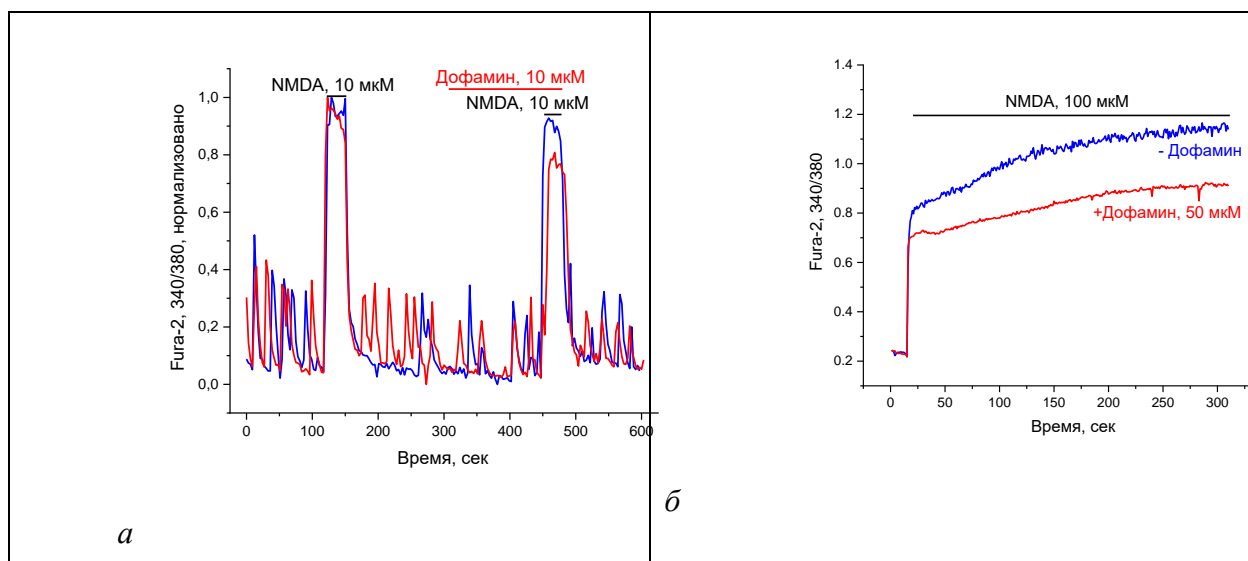


Рис. 4.

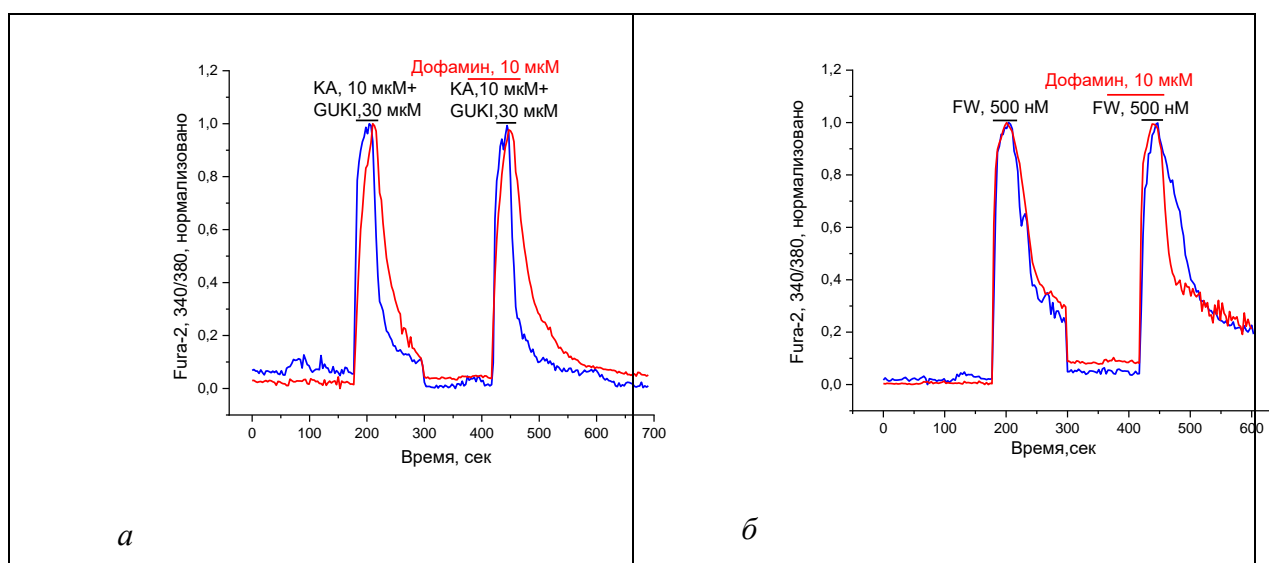


Рис. 5.

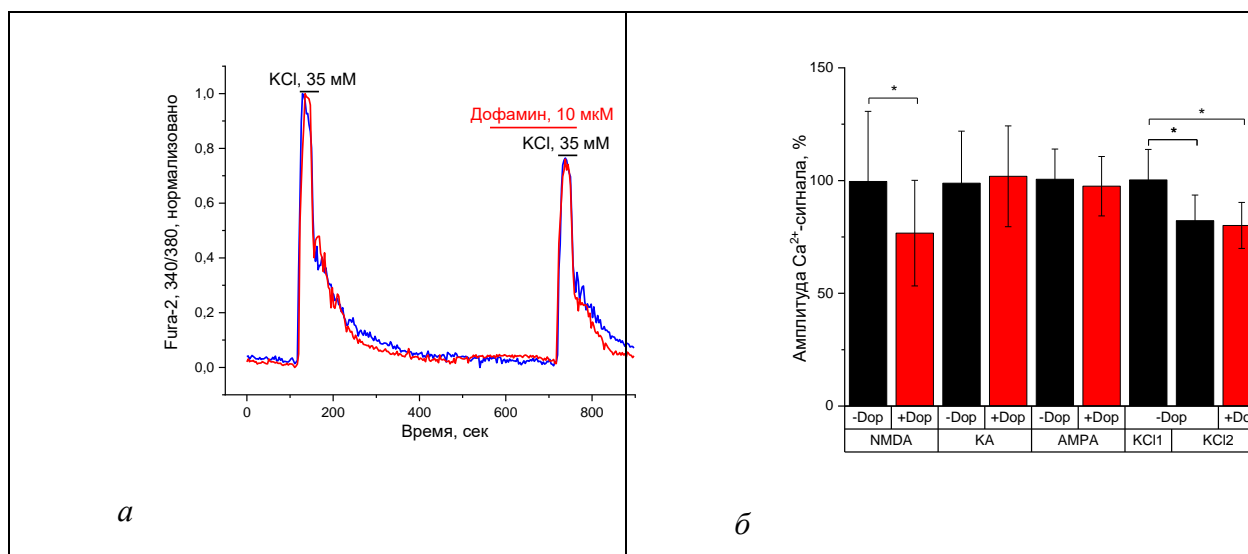


Рис. 6.

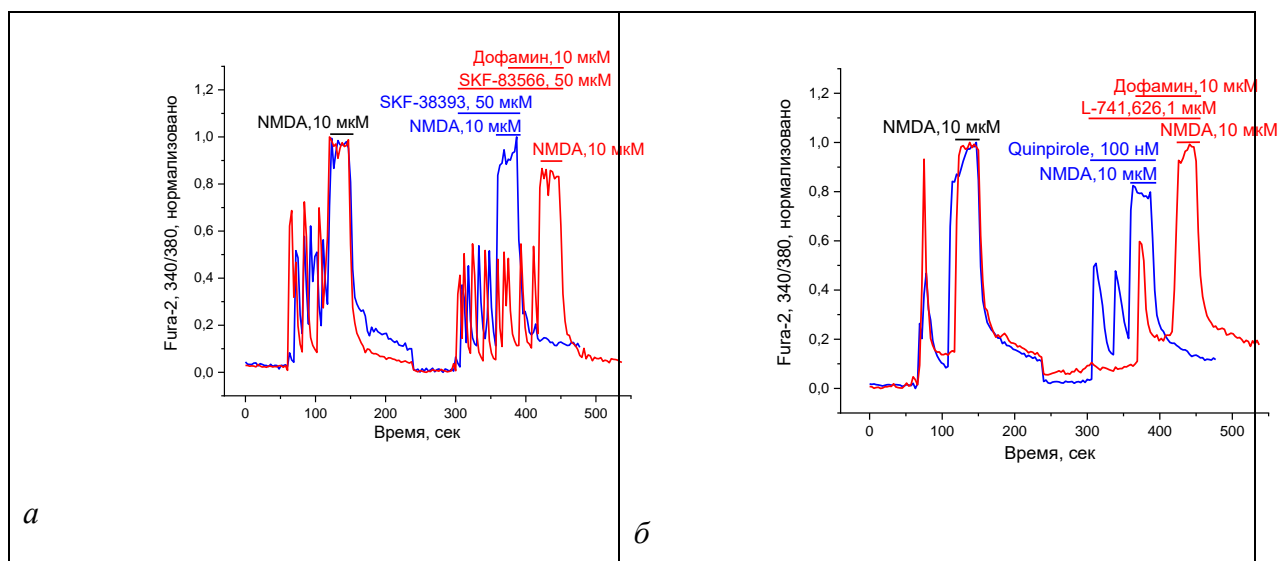


Рис. 7.

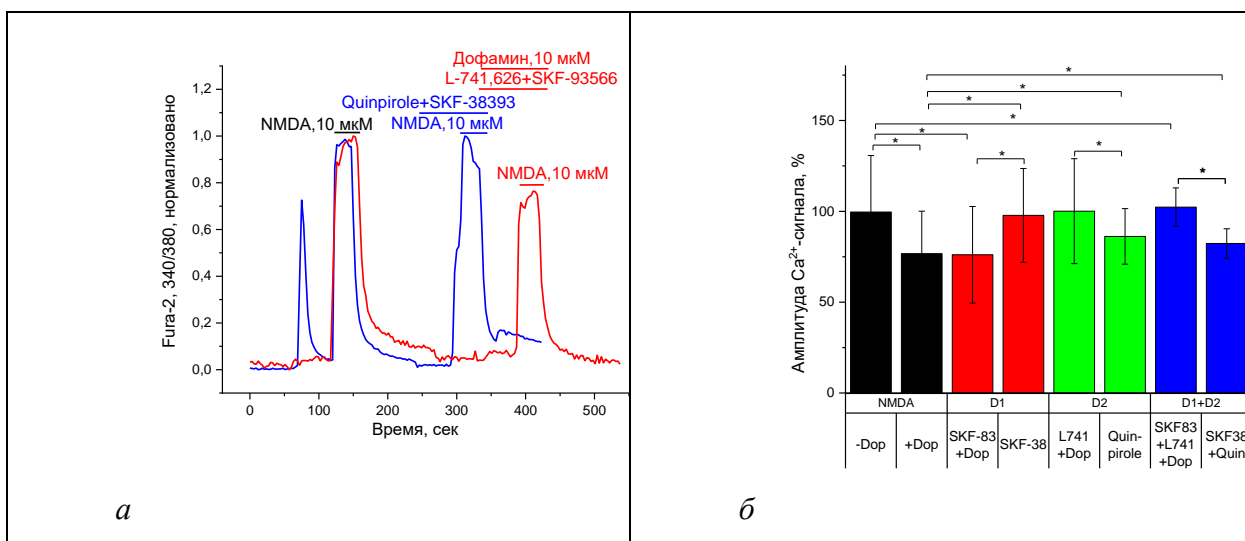


Рис. 8.

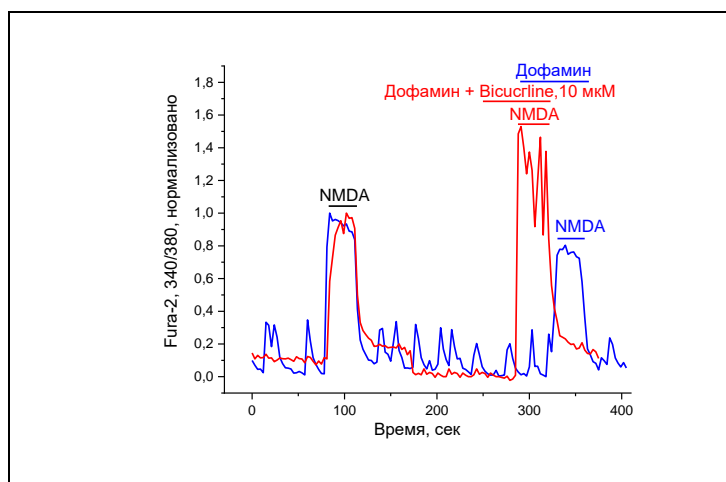


Рис. 9.

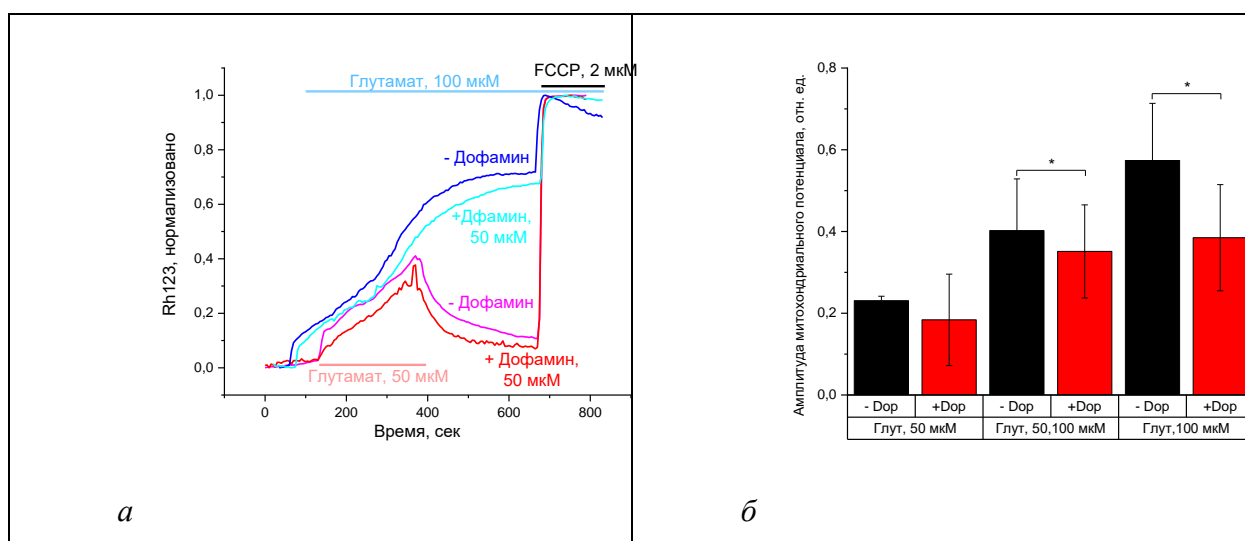


Рис. 10.

