

Human herpesvirus 6A and axonal injury before the clinical onset of multiple sclerosis

Viktor Grut,¹ Martin Biström,¹ Jonatan Salzer,¹ Pernilla Stridh,^{2,3} Daniel Jons,⁴ Rasmus Gustafsson,^{2,3} Anna Fogdell-Hahn,^{2,3} Jesse Huang,^{2,3} Julia Butt,⁵ Anna Lindam,⁶ Lucia Alonso-Magdalena,⁷ Tomas Bergström,⁸ Ingrid Kockum,^{2,3} Tim Waterboer,⁵ Tomas Olsson,^{2,3} Henrik Zetterberg,^{9,10,11,12,13,14} Kaj Blennow,^{9,10} Oluf Andersen,⁴ Staffan Nilsson¹⁵ and Peter Sundström¹

Abstract

Recent research indicates that multiple sclerosis is preceded by a prodromal phase with elevated levels of serum neurofilament light chain (sNfL), a marker of axonal injury. The effect of environmental risk factors on the extent of axonal injury during this prodrome is unknown. Human herpesvirus 6A (HHV-6A) is associated with an increased risk of developing multiple sclerosis. The objective of this study was to determine if HHV-6A serostatus is associated with the level of sNfL in the multiple sclerosis prodrome, which would support a causative role of HHV-6A.

A nested case-control study was performed by crosslinking multiple sclerosis registries with Swedish biobanks. Individuals with biobank samples collected before the clinical onset of multiple sclerosis were included as cases. Controls without multiple sclerosis were randomly selected, matched for biobank, sex, sampling date and age. Serostatus of HHV-6A and Epstein-Barr virus (EBV) was analysed with a bead-based multiplex assay. The concentration of sNfL was analysed with Single molecule array technology. The association between HHV-6A serology and sNfL was assessed by stratified *t*-tests and linear regressions, adjusted for EBV serostatus and sampling age. Within-pair ratios of HHV-6A seroreactivity and sNfL were calculated for each case and its matched control. To assess the temporal relationship between HHV-6A antibodies and sNfL, these ratios were plotted against the time to the clinical onset of multiple sclerosis and compared using locally estimated scatterplot smoothing regressions with 95 % confidence intervals (CI).

Samples from 519 matched case-control pairs were included. In cases, seropositivity of HHV-6A was significantly associated with the level of sNfL (+11%, 95% CI 0.2–24%, $P = 0.045$), and most pronounced in the younger half of the cases (+24%, 95% CI 6–45%, $P = 0.007$). No such

1 associations were observed among the controls. Increasing seroreactivity against HHV-6A was
2 detectable before the rise of sNFL (significant within-pair ratios from 13.6 years vs 6.6 years before
3 the clinical onset of multiple sclerosis).

4 In this study, we describe the association between HHV-6A antibodies and the degree of axonal
5 injury in the multiple sclerosis prodrome. The findings indicate that elevated HHV-6A antibodies
6 both precede and are associated with a higher degree of axonal injury, supporting the hypothesis
7 that HHV-6A infection may contribute to multiple sclerosis development in a proportion of cases.
8

9 **Author affiliations:**

10 1 Department of Clinical Science, Neurosciences, Umeå University, 901 87 Umeå, Sweden

11 2 Department of Clinical Neuroscience, Karolinska Institutet, 171 77 Stockholm, Sweden

12 3 Center for Molecular Medicine, 171 76 Stockholm, Sweden

13 4 Department of Clinical Neuroscience, Institute of Neuroscience and Physiology, Sahlgrenska
14 Academy, University of Gothenburg, 405 30 Gothenburg, Sweden

15 5 Infections and Cancer Epidemiology Division, German Cancer Research Center, 69120
16 Heidelberg, Germany

17 6 Department of Public Health and Clinical Medicine, Unit of Research, Education and
18 Development Östersund Hospital, Umeå University, 901 87 Umeå, Sweden

19 7 Department of Neurology, Skåne University Hospital and Department of Clinical Sciences, Lund
20 University, 221 84 Lund, Sweden

21 8 Department of Infectious Diseases, Institute of Biomedicine, Sahlgrenska Academy, University
22 of Gothenburg, 405 30 Gothenburg, Sweden

23 9 Department of Psychiatry and Neurochemistry, Institute of Neuroscience and Physiology,
24 Sahlgrenska Academy, University of Gothenburg, 405 30 Gothenburg, Sweden

25 10 Clinical Neurochemistry Laboratory, Sahlgrenska University Hospital, 431 80 Mölndal,
26 Sweden

1 11 Department of Neurodegenerative Disease, UCL Institute of Neurology, London, WC1N 3BG,
2 UK

3 12 UK Dementia Research Institute at UCL, London, W1T 7NF, UK

4 13 Hong Kong Centre for Neurodegenerative Diseases, Hong Kong 999077, China

5 14 Wisconsin Alzheimer's Disease Research Center, University of Wisconsin School of Medicine
6 and Public Health, University of Wisconsin-Madison, Madison, WI 53792, USA

7 15 Department of Laboratory Medicine, Institute of Biomedicine, Sahlgrenska Academy,
8 University of Gothenburg, 405 30 Gothenburg, Sweden

9

10 Correspondence to: Viktor Grut

11 Postal address: Department of Clinical Science, Neurosciences, Umeå University, 901 87 Umeå,
12 Sweden

13 E-mail: viktor.grut@umu.se

14

15 **Running title:** HHV-6A and axonal injury before MS onset

16

17 **Keywords:** multiple sclerosis; axonal injury; neurofilament light chain; human herpesvirus 6-A;
18 Epstein-Barr virus

19 **Abbreviations:** EBV = Epstein-Barr virus; HHV-6A = human herpesvirus 6A; HHV-6B, human
20 herpesvirus 6B; sNfL = serum neurofilament light chain; IE1A= immediate-early protein 1 from
21 HHV-6A; HSV-1 = herpes simplex virus type 1; HSV-2 = herpes simplex virus type 2; VZV =
22 varicella zoster virus; CMV = cytomegalovirus; HHV-7, human herpesvirus 7; MFI = median
23 fluorescence intensity; EBNA-1 = Epstein-Barr virus nuclear antigen 1; CRP = C-reactive protein;
24 loess = locally estimated scatterplot smoothing; BMI = body mass index; OR = odds ratio; CI =
25 confidence interval; LOD = limit of detection; ANO2 = Anoctamin 2

26

1 Introduction

2 Multiple sclerosis is an immune-mediated chronic disease affecting the CNS.¹ According to the
3 prevailing hypothesis, the disease is triggered by an interplay of environmental risk factors in
4 individuals with genetic susceptibility to multiple sclerosis.² Virtually all patients with multiple
5 sclerosis are seropositive for Epstein-Barr virus (EBV), which has thus been suggested as a
6 prerequisite for the disease in adults.^{3,4} However, the high seroprevalence of EBV in the healthy
7 population shows that EBV is not a sufficient cause of multiple sclerosis. Additional
8 environmental factors are likely contributing to its aetiology. One such candidate is human
9 herpesvirus 6 (HHV-6), which has been repeatedly associated with multiple sclerosis risk.⁵ While
10 many previous studies did not distinguish between the two different species HHV-6A and -6B
11 (collectively referred to as HHV-6), several studies now indicate that the association with multiple
12 sclerosis is attributable to HHV-6A.⁶⁻⁹ As a neurotrophic virus, HHV-6A can infect
13 oligodendrocytes.¹⁰ These cells produce myelin, often regarded as the target for the inflammatory
14 processes in multiple sclerosis.¹ In line with this finding, HHV-6 has been identified more
15 frequently in biopsy samples from multiple sclerosis plaques than in normal CNS tissue.¹¹⁻¹³
16 Higher levels of antibodies against HHV-6 have also been detected in serum and cerebrospinal
17 fluid from patients with multiple sclerosis.^{7,14} The level of these antibodies is associated with the
18 risk of relapse in multiple sclerosis.¹⁵ In addition, higher levels of HHV-6 DNA have been
19 observed in blood plasma from patients with multiple sclerosis.¹⁶ Interestingly, these signs of
20 reactivated HHV-6 infection were only observed during relapses or exacerbations of multiple
21 sclerosis.^{16,17}

22 Previous research suggests that HHV-6 may be involved in the early stages of multiple sclerosis
23 pathogenesis.^{9,18} The initiation and early phase of multiple sclerosis need to be better studied, but
24 such investigations are complicated by the recently recognised prodrome.¹⁹ For example, two
25 recent studies reported higher levels of serum neurofilament light chain (sNfL) – a marker of
26 axonal injury – in biobank samples from individuals who several years later developed clinical
27 signs of multiple sclerosis.^{20,21} These ultra-sensitive analyses of sNfL have also been utilized to
28 investigate the order of events in EBV seroconversion and the onset of multiple sclerosis,
29 strengthening their association: a nested case-control study identified samples from 801
30 individuals who later developed multiple sclerosis. Only 35 of these individuals were EBV-

1 seronegative and all but one seroconverted before the onset of multiple sclerosis. Furthermore,
2 EBV seroconversion preceded the sNfL increase.²²

3 We aimed to investigate the possible causative role of HHV-6A in multiple sclerosis by
4 analysing HHV-6A serology and levels of sNfL in the prodromal phase of multiple sclerosis. The
5 first objective of this study was to determine if HHV-6A infection before the clinical onset of
6 multiple sclerosis was associated with higher levels of sNfL. The second objective was to
7 determine if increasing HHV-6A seroreactivity was detectable before the increase of sNfL in the
8 multiple sclerosis prodrome.

9

10 **Materials and methods**

11 A nested case-control study was performed by cross-linking multiple sclerosis registries and six
12 Swedish microbiological biobanks, as previously described in detail.²³ Through this process, we
13 identified and retrieved plasma or serum samples from individuals who later developed relapsing-
14 remitting multiple sclerosis. These samples are remnants from serological testing. All included
15 samples were collected before the clinical onset of multiple sclerosis and before the age of 40
16 (Supplementary Fig. 1). For each case, one control without multiple sclerosis was randomly
17 selected and matched for biobank, sex, blood sampling date and birth date (in order of priority).
18 The samples were categorized both according to sampling age and time to clinical onset of multiple
19 sclerosis.

20

21 The study was performed in accordance with the Declaration of Helsinki and approved by the
22 Regional Ethical Review Board in Umeå (2011-198-31M with amendments 2013-226-32M, 2017-
23 104-32, 2017-484-32, 2018-468-32M, 2019-03402, and 2020-00119). Participants were informed
24 by mail with an opt-out approach. No written informed consent was required.

25

26

1 **Laboratory procedures**

2 The concentration of sNfL was analysed using Single molecule array (Simoa) technology and the
3 NF-Light assay (Quanterix, Billerica, MA), as previously described.^{21,24} A bead-based multiplex
4 assay, also previously described in detail,^{8,25} was used to detect serological responses to human
5 herpesviruses 1–7: herpes simplex virus type 1 (HSV-1); herpes simplex virus type 2 (HSV-2);
6 varicella zoster virus (VZV); EBV; cytomegalovirus (CMV); HHV-6A; HHV-6B; and human
7 herpesvirus 7 (HHV-7). Seropositivity for HHV-6A was defined as a seroresponse against
8 truncated immediate-early protein 1 from HHV-6A (IE1A).⁸ A cut-off of 50 median fluorescence
9 intensity units (MFI) was used, as in our previous studies.^{9,26} Seropositivity for EBV was
10 determined from the seroresponse against validated antigens and cut-offs: EBV nuclear antigen 1
11 (EBNA-1) truncated (amino acid [aa] 325–641) ≥ 1800 MFI; or EBNA-1 peptide (aa 385–420)
12 ≥ 411 MFI; or viral capsid antigen p18 (aa 1–175) ≥ 2526 MFI.^{9,27}

13 To identify samples with biochemical signs of acute disease or trauma, we analysed the
14 concentration of C-reactive protein (CRP) with a high-sensitive multiplex immunoassay (V-PLEX
15 Vascular Injury Panel 2 Human Kit, Mesoscale). All samples from matched cases and controls
16 were analysed consecutively in the same batch but in random order and blinded for the technician.
17 The data on sNfL, CRP, HHV-6A, EBV and CMV have been published previously.^{8,9,21,26,28} In
18 this study, we combined these data in expanded analyses to assess a different hypothesis.

19

20 **Statistical methods**

21 **Serostatus of HHV-6A and levels of sNfL**

22 The proportions of HHV-6A-seropositive samples in matched cases and controls were compared
23 with McNemar test. Serum NfL was \log_{10} -transformed and analysed with a paired-samples *t*-test,
24 comparing each case with its matched control. The \log_{10} sNfL in HHV-6A-seropositive and -
25 negative samples were compared with an independent samples *t*-test, stratified by case-control
26 status.

1 To adjust for the natural age-dependent increase of sNfL,²⁹ a within-pair ratio of sNfL was
2 calculated for each case and its age-matched control. The ratios were \log_{10} -transformed and
3 compared between HHV-6A-seropositive and -negative cases with an independent-samples *t-test*.

4 To further investigate the levels of sNfL in HHV-6A-seropositive and -negative samples, we
5 plotted the within-pair ratios of sNfL against the time from serum sampling to the clinical onset of
6 multiple sclerosis. These plots were stratified for HHV-6A serostatus and analysed with locally
7 estimated scatterplot smoothing (loess) regression with 95% confidence intervals (CI).

8

9 As an additional approach to adjust for sampling age, we used age-adjusted *z*-scores of sNfL. These
10 *z*-scores were calculated for each case and control using the sNfL Reference Application based on
11 measurements from 4532 controls.³⁰ Data regarding body mass index (BMI) at the time of serum
12 sampling was not available and a standard BMI value of 25 was thus used in these calculations.
13 Age-adjusted sNfL *z*-scores in HHV-6A-seropositive and -negative cases and controls were
14 compared with a *t-test*.

15

16 The association between HHV-6A seropositivity and \log_{10} sNfL was analysed with multiple linear
17 regression, stratified by case-control status. The regression model included sampling age and
18 serostatus for EBV. Since EBV is an age-dependent risk factor for multiple sclerosis,⁹ these
19 analyses were stratified by median sampling age. The model was also adjusted for sex, indirectly
20 associated with sNfL through the risk of trauma.

21 To further assess the association between HHV-6A serostatus and elevated sNfL, a logistic
22 regression was performed, calculating the odds ratio (OR) with 95% CI for HHV-6A as a risk
23 factor for elevated sNfL. Elevated sNfL was defined as age-adjusted sNfL *z*-score >2. The model
24 also included serostatus of EBV and sex. These analyses were stratified by case-control status and
25 median sampling age.

26 To determine if combined HHV-6A and EBV seropositivity affected sNfL levels, we performed a
27 *t-test* of \log_{10} sNfL in cases with singular versus combined seropositivity for HHV-6A and EBV.
28 Sampling age was accounted for by analysing age-adjusted sNfL *z*-scores.

29

1 **Time relation of HHV-6A antibodies and sNfL**

2 The included samples were donated up to 33 years (median 10.4 years) before the clinical onset of
3 multiple sclerosis. Together with the matched samples, this material reflects a wide time span,
4 enabling temporal analysis of the order of events on group level.

5 The natural variation of sNfL is too large to decide if an individual sample was drawn during the
6 multiple sclerosis prodrome. However, by analysing many samples from a wide time range, the
7 transient shift towards increasing levels of sNfL is revealed.²¹ Events occurring before the
8 increasing sNfL levels are likely occurring before the subclinical onset of multiple sclerosis.

9 To assess if increasing HHV-6A seroreactivity was detectable before the rise of sNfL, we
10 calculated the within-pair ratio of HHV-6A seroreactivity (measured as MFI) for each matched
11 case-control pair. To reduce the effect of the random technical noise in the seronegative samples,
12 and avoid division by zero, these plots were calculated with a limit of detection (LOD) of 50 MFI.
13 These ratios were plotted against the time from the serum sampling to the clinical onset of multiple
14 sclerosis and analysed using loess regression with 95% CI. This plot was then compared with the
15 previously reported loess regression of within-pair ratio of sNfL against the time to the clinical
16 onset of multiple sclerosis.²¹ For comparison, we also calculated loess regressions of within-pair
17 MFI ratios for herpesviruses HSV-1, HSV-2, VZV, CMV, HHV-6B, and HHV-7, plotted against
18 the time to the clinical onset of multiple sclerosis. These plots were also calculated with a LOD of
19 50 MFI.

21 **Sensitivity analyses**

22 Elevated levels of NfL have been reported in many other conditions, such as traumatic brain injury
23 and CNS infections.^{31,32} To exclude individuals with biochemical signs of acute disease or trauma,
24 sensitivity analyses were performed in samples with CRP <5 mg/L.

25 The method to calculate age-adjusted sNfL z -scores is currently not applicable to children below
26 the age of 17, for whom ($n = 91$ of 1038) the z -scores were calculated as if these individuals were
27 17 years old. Sensitivity analyses were performed to account for the uncertainty of these z -scores,
28 excluding samples drawn before the age of 17.

1 A few samples were collected closely before the clinical onset of multiple sclerosis
2 (Supplementary Fig. 1), conferring uncertainty about whether the samples were truly
3 presymptomatically collected. A set of sensitivity analyses were thus performed limited to samples
4 collected more than 1–4 years before the clinical onset.

5 Since seropositivity against EBV appears to be necessary for developing multiple sclerosis, the
6 prodromal phase may also be dependent on EBV. Additional sensitivity analyses were thus limited
7 to EBV seropositive samples.

8

9 Statistical tests were two-tailed. The significance level was 0.05. Statistical analyses were
10 performed in R, version 4.2.1, and SPSS, version 28. All graphs were constructed in R.

11

12 **Results**

13 We identified and retrieved samples from a total of 670 matched case-control pairs. Due to
14 insufficient sample volume, 151 sets were excluded, leaving 519 matched case-control pairs for
15 the final analyses. The median age at sampling was 24.7 years and the median time to clinical
16 onset of multiple sclerosis was 9.5 years. Demographic data has been described previously.²¹

17

18 **Serostatus of HHV-6A and levels of sNfL**

19 The proportion of HHV-6A-seropositive samples was significantly higher in cases than in controls
20 (table 1). A significantly higher level of sNfL was observed in cases compared to age-matched
21 controls. Comparing HHV-6A-seropositive and -negative cases, the levels of sNfL were
22 significantly higher in the seropositive cases. Similar results were observed for age-adjusted
23 values, although not statistically significant (table 1).

24

25 The level of sNfL was significantly higher in HHV-6A-seropositive cases than in their matched
26 controls from more than 6 years prior to the clinical onset of multiple sclerosis (Fig. 1A). However,
27 a similar increase of sNfL was also observed in HHV-6A-seronegative cases, where sNfL was

1 significantly higher than in their matched controls from more than 4 years before the clinical onset
2 (Fig. 1B). The confidence intervals were overlapping, and the loess regressions of these two groups
3 were not significantly different.

4
5 We observed a significant association between HHV-6A seropositivity and higher sNfL among
6 cases, but not in controls (table 2). The association between HHV-6A and sNfL was driven by
7 findings in samples drawn before the median age of 24.7 years.

8
9 Elevated sNfL (age-adjusted sNfL z-score > 2) was observed in 104 cases and 73 controls
10 ($P = 0.008$). In young cases (sampling age $<$ median of 24.7 years), seropositivity for HHV-6A
11 was significantly associated with a higher risk of elevated sNfL; OR = 1.91 (95% CI 1.04–3.52),
12 $P = 0.04$. No such association was observed in controls (Supplementary Table 1).

13 The level of sNfL was significantly higher in cases with combined seropositivity for HHV-6A and
14 EBV, compared to those only seropositive for EBV (geometric mean 7.67 vs 6.76, $P = 0.03$).
15 Similar findings were observed when accounting for age, although not statistically significant;
16 mean age-adjusted sNfL z-score 1.10 vs 0.89, $P = 0.06$.

17 Only eight cases were seropositive against HHV-6A and simultaneously EBV seronegative,
18 limiting further interaction analyses. Levels of sNfL in categories with different combinations of
19 EBV and HHV-6A serostatus are presented in Supplementary Table 2.

21 **Time relation of HHV-6A antibodies and sNfL**

22 The within-pair ratios of HHV-6A seroreactivity and sNfL were plotted against the time to the
23 clinical onset and analysed with loess regression. As visualized by the 95% CI of the loess
24 regression, a statistically significant ratio of HHV-6A seroreactivity was detectable from more
25 than 13.5 years before the clinical onset of multiple sclerosis (Fig. 2A). As previously reported,
26 the sNfL ratio increased from 10 years before the clinical onset.²¹ A significant sNfL ratio was
27 observed from 6.6 years before the clinical onset (Fig. 2B). The increasing HHV-6A seroreactivity
28 was thus detectable before the rise of sNfL in samples from individuals who later developed
29 multiple sclerosis.

1 For comparison, the ratios of seroreactivities for human herpesviruses HSV-1, HSV-2, VZV,
2 CMV, HHV-6B and HHV-7 were also plotted. No significant increases in MFI ratios were
3 observed for these viruses (Supplementary Fig. 2).

4

5 **Sensitivity analyses**

6 To identify and exclude samples drawn at acute disease, we used available CRP estimates.²⁸ We
7 selected those with CRP <5 mg/L (300 cases and 310 controls) for these sensitivity analyses. The
8 level of sNfL remained significantly higher in HHV-6A-seropositive cases than in -negative cases
9 (geometric mean 7.91 vs 6.68, $P = 0.01$). The within-pair ratio of sNfL in HHV-6A-seropositive
10 and -negative cases (geometric mean ratio 1.29 vs 1.10, $P = 0.12$) were similar to ratios for all
11 samples. This was calculated for pairs where both the case and the control had CRP <5 mg/mL (n
12 = 191). The association between HHV-6A and higher levels of sNfL remained similar in all
13 sampling ages (+14%, 95% CI 0%–29%, $P = 0.06$) and still significant in the younger group
14 (+26%, 95% CI +4%–52%, $P = 0.02$). Cases with combined seropositivity for HHV-6A and EBV
15 still had significantly higher levels of sNfL compared to those only seropositive for EBV
16 (geometric mean 7.99 vs 6.69, $P = 0.01$).

17 In the sensitivity analyses of age-adjusted sNfL z -scores, we also excluded samples drawn before
18 the age of 17. Still, the results remained similar. The sNfL z -scores were significantly higher in
19 HHV-6A-seropositive than in -negative cases (mean z -score 1.20 vs 0.91, $P = 0.045$). Cases with
20 combined seropositivity for HHV-6A and EBV had significantly higher sNfL z -scores than those
21 only seropositive for EBV (mean z -score 1.19 vs 0.90, $P = 0.04$). The logistic regression, assessing
22 HHV-6A as a risk factor for elevated sNfL, also remained similar in cases below median age (OR
23 = 2.19, 95% CI 0.92–5.23, $P = 0.08$).

24 Sensitivity analyses of samples drawn >1–4 years before the clinical onset of multiple sclerosis
25 yielded similar results (Supplementary Table 3).

26 Finally, highly similar results were also observed when excluding EBV seronegative samples. As
27 in the primary analysis, HHV-6A seropositivity was significantly associated with the level of sNfL
28 in the younger half of the cases, but not among the older cases (Supplementary Table 4).

1 Discussion

2 In this study, we investigated the relationship between HHV-6A serostatus and sNfL levels in
3 samples collected many years prior to the clinical onset of multiple sclerosis.

4 In the linear regression analysis, HHV-6A seropositivity was significantly associated with higher
5 levels of sNfL, also when adjusted for sampling age, EBV serostatus, and sex. The association was
6 only present in samples collected from cases at a young (below median, 24.7 years) age, where
7 HHV-6A seropositivity was associated with a doubled risk of elevated sNfL. This finding may
8 reflect that this is the age when HHV-6A may contribute to the multiple sclerosis prodrome. The
9 level of sNfL was also higher in cases with combined seropositivity for HHV-6A and EBV
10 compared to those only seropositive for EBV. Similar, although not statistically significant, results
11 were observed when analysing mean age-adjusted sNfL z-scores and within-pair sNfL ratios. The
12 results also remained similar in sensitivity analyses. No corresponding associations between HHV-
13 6A and sNfL were observed in the control group.

14
15 Using presymptomatically collected serum samples, the current study design minimizes the risk
16 of reverse causation. Spanning from early childhood to adulthood, the collection of samples
17 provides a unique opportunity to assess the order of events in the pathogenesis of multiple
18 sclerosis. Increasing seroreactivity against HHV-6A was detectable in cases many years before the
19 increase of sNfL, suggesting a time relation where HHV-6A antibodies precede demyelination and
20 axonal injury. This was not part of a non-specific increase of antibodies belonging to a subclinical
21 multiple sclerosis pathological process, as similar findings were not found for six other human
22 herpesviruses (Supplementary Fig. 2).

23
24 This study also entails limitations that need to be addressed. The conversion to age-adjusted sNfL
25 z-scores resulted in a mean sNfL z-score of 0.74 in the control samples, which is higher than
26 expected. One possible reason would be that many samples were initially collected to diagnose
27 acute disease, which may affect the levels of sNfL. Unfortunately, no clinical data at the time of
28 serum sampling was available for cases or controls. However, since sensitivity analyses, excluding
29 samples with CRP ≥ 5 mg/L, yielded highly similar results, this may not be the sole explanation.

1 Other factors such as evaporation may also affect the levels of sNfL. Still, this would affect
2 samples from cases and controls equally, and would not affect the validity of our findings.
3 Furthermore, we did not have access to height or weight data at the time of serum sampling. The
4 level of sNfL decreases with higher BMI, likely by dilution in the larger circulating blood
5 volume.³³ Adolescent overweight is a recognized risk factor for multiple sclerosis.^{34,35} It can thus
6 be assumed that the cases had a higher mean BMI than controls, which confers the risk of
7 introducing a systematic bias. However, such a bias would lead to an underestimation of the sNfL
8 z-scores in cases, resulting in a false negative result. This limitation should thus not question the
9 validity of the results. In addition, the levels of sNfL might also be affected by differences between
10 the cohorts and the laboratory methods in the current study and the sNfL reference database.

11
12 In the plots and loess-regressions, the age-dependent variation of sNfL is accounted for by the use
13 of the within-pair ratio, providing age-matched comparisons. Using the same approach for
14 seroreactivity, which is not necessarily age-dependant, might seem unjustified. However, this
15 approach enables plotting seroreactivity against the time to multiple sclerosis onset,
16 simultaneously providing comparisons with controls matched for biobank, sex, and age.
17 Furthermore, this method enables comparisons of the time points for increasing seroreactivity and
18 sNfL levels.

19
20 The antigens and MFI cut-offs for determining serostatus of HSV-1, HSV-2, VZV, EBV, and
21 CMV have all been validated against established reference assays.²⁷ However, this is not the case
22 for HHV-6A, for which no reliable reference assay is yet available. The assay has only been partly
23 validated for specificity in sera from children with exanthema subitum (also known as roseola
24 infantum or sixth disease), which is caused by HHV-6B.³⁶ The validation indicated negligent
25 cross-reactivity for IE1A regarding HHV-6A and -6B.⁸ Since no differences between cases and
26 controls were observed for HHV-6B seroreactivity,⁹ the association between HHV-6B and sNfL
27 was not assessed here.

28

1 Furthermore, no validated cut-off has been established for IE1A. In consistence with our previous
2 studies, we defined HHV-6A seropositivity as a seroresponse against IE1A >50 MFI.^{9,26} Other
3 studies have used the 75th percentile of IE1A MFI in controls as the cut-off.^{8,37} In the current
4 sample, that value corresponds to an MFI of 50.7. The different definitions of serostatus would
5 thus yield highly similar or identical results. Furthermore, the cut-off used in the current study has
6 previously been tested in sensitivity analyses and shown to be robust.⁹ Still, the method to
7 differentiate HHV-6A serostatus is less certain than the approach for EBV serostatus. This is a
8 limitation, as in all current studies of HHV-6A serology.

9

10 Finally, it remains possible that the association between HHV-6A and multiple sclerosis represents
11 an epiphenomenon due to viral reactivation in injured oligodendrocytes. However, the observation
12 that increasing HHV-6A antibodies were detectable before increasing sNfL argues against such a
13 mechanism, which would likely result in the reversed time-order.

14

15 Several hypotheses for HHV-6A in the pathogenesis of multiple sclerosis have been
16 suggested.^{5,38,39} A direct injury from lytic HHV-6A infection in oligodendrocytes could cause cell
17 death, demyelination, and subsequent inflammation. Similar processes have been observed for JC
18 Polyomavirus in progressive multifocal leukoencephalopathy and measles virus in subacute
19 sclerosing panencephalitis.³⁸ It has also been suggested that the pathogenic effect could be caused
20 by molecular mimicry.³⁸ This concept implies that viral proteins share amino acid sequences or
21 structures with host cell proteins. These viral antigens are thereby suggested to activate
22 autoreactive immune-competent cells, causing aberrant inflammation and cell damage. For EBV,
23 two epitopes of EBNA-1 display amino acid homology with CNS host antigens, namely
24 Anoctamin 2 (ANO2)⁴⁰ and GlialCAM.⁴¹ Carriage of ANO2 antibodies associate with an increased
25 risk of multiple sclerosis, highly suggestive of a pathogenic role.⁴⁰ A homologous amino acid
26 sequence with potential for molecular mimicry has also been described for an HHV-6 peptide and
27 myelin basic protein, a putative autoantigen for multiple sclerosis.⁴² An alternative mechanism of
28 virus-induced autoimmunity have also been suggested: during viral replication, the envelope is
29 formed from the host cell membrane and can thus incorporate lipids and proteins from the host.⁴³

1 As a neurotrophic virus, the envelope of HHV-6A may contain proteins and lipids from
2 oligodendrocytes, which could trigger autoimmune reactions directed against these cells.⁴⁴

3 However, the previous observations of total EBV seroprevalence in adults with multiple sclerosis
4 suggest that EBV is a prerequisite, but insufficient cause of the disease.^{3,4} Neither do the results of
5 the current study indicate that HHV-6A is the sole cause of multiple sclerosis, instead providing
6 an increased risk. The level of sNfL increased significantly before the clinical onset of multiple
7 sclerosis in both HHV-6A-seropositive and -negative cases (Figure 1A–B), indicating that HHV-
8 6A is no prerequisite for multiple sclerosis but rather a contributing factor in a proportion of cases.
9 Only eight of 519 samples from individuals who later developed multiple sclerosis were
10 seropositive against HHV-6A and simultaneously seronegative against EBV. All these samples
11 were drawn more than ten years before the clinical onset of multiple sclerosis, leaving ample time
12 for late EBV infection. Isolated HHV-6A infection is thus rare during the presymptomatic phase
13 of multiple sclerosis and virtually non-existent when the disease is fully developed.^{3,4} Instead, the
14 observations in the current study support the hypothesis that both EBV and HHV-6A contribute to
15 the development of multiple sclerosis.³⁹ In consistence, HHV-6A, but not HHV-6B, co-infect
16 B-cells latently infected with EBV, resulting in a subsequent increase in the expression of EBV
17 antigens.⁴⁵⁻⁴⁷ Furthermore, additive interactions have been observed between EBV and HHV-6A
18 seropositivity regarding the risk of multiple sclerosis.⁸ Infection from EBV during early childhood
19 is typically mild or asymptomatic, while infection at later age often causes infectious
20 mononucleosis. The latter is highly associated with the risk of multiple sclerosis. Late EBV
21 infection, causing infectious mononucleosis, might thus be sufficient to cause multiple sclerosis in
22 individuals with genetic susceptibility and/or other risk factors. In contrast, early EBV infection
23 could require a second hit by HHV-6A infection to reactivate latent EBV and initiate the
24 inflammatory cascade leading to multiple sclerosis. This hypothesis is consistent with the
25 observations in the present study, where increasing seroreactivity against HHV-6A was detectable
26 years before the rising levels of sNfL. This indicates that elevated HHV-6A antibodies precede the
27 immune-mediated axonal injury in a subset of individuals that will develop multiple sclerosis.
28 However, the current study can merely indicate the order of events at the group level. While the
29 large number of samples and the many years observed between increasing HHV-6A seroreactivity
30 and sNfL support the relevance of these observations, the lack of serial samples limits the
31 possibility to suggest causality. Testing the suggested hypothesis requires an extensive

1 longitudinal study of presymptomatically collected serial samples, identifying the time points for
2 both EBV and HHV-6A seroconversion. Furthermore, there is a need for PCR studies of HHV-6A
3 and -6B excretion in several clinical materials, including saliva and/or white blood cells, combined
4 with type-specific HHV-6 serology.

5
6 In conclusion, we report a significant association between HHV-6A seropositivity and the level of
7 sNfL in samples from individuals who later developed multiple sclerosis, likely reflecting the
8 prodromal phase of the disease. In addition, increasing seroreactivity against HHV-6A was
9 detectable before the rise of sNfL. These findings support the hypothesis that HHV-6A may
10 contribute to the pathogenesis of multiple sclerosis in a proportion of cases, but do not show that
11 HHV-6A infection is essential for disease development.

13 **Data availability**

14 The data that support the findings of this study are available from the corresponding author upon
15 reasonable request.

17 **Acknowledgements**

18 The authors thank the participants in the cohorts and all the staff in the biobanks involved in
19 collecting the samples. The Swedish multiple sclerosis registry is gratefully acknowledged.

21 **Funding**

22 This study was supported by the Swedish Research Council, grant 2015-02419; the Visare Norr
23 Fund, Northern County Councils' Regional Federation, grant 940405; the Research and
24 Development Unit, Region Jämtland Härjedalen, grant JLL-967380; the Research Fund for
25 Clinical Neuroscience at the University Hospital of Northern Sweden; Oskarfondens; and NEURO
26 Sweden. PSt received funding from Margaretha af Ugglas siftelse, the Swedish Neuro Foundation

1 and the MS Research fund. TO received funding from the Swedish research Council, The Swedish
2 Brain Foundation and Margaretha af Ugglas stiftelse. IK received funding from Magareta af
3 Ugglas stiftelse and The National MS Society, grant RFA-2104-37575. JH, PSt and IK were
4 partially supported by Horizon 2020 MultipleMS, grant 733161. HZ is a Wallenberg Scholar
5 supported by grants from the Swedish Research Council (#2022-01018), the European Union's
6 Horizon Europe research and innovation programme under grant agreement No 101053962,
7 Swedish State Support for Clinical Research (#ALFGBG-71320), the Alzheimer Drug Discovery
8 Foundation (ADDF), USA (#201809-2016862), the AD Strategic Fund and the Alzheimer's
9 Association (#ADSF-21-831376-C, #ADSF-21-831381-C, and #ADSF-21-831377-C), the
10 Bluefield Project, the Olav Thon Foundation, the Erling-Persson Family Foundation, Stiftelsen för
11 Gamla Tjänarinnor, Hjärnfonden, Sweden (#FO2022-0270), the European Union's Horizon 2020
12 research and innovation programme under the Marie Skłodowska-Curie grant agreement No
13 860197 (MIRIADE), the European Union Joint Programme – Neurodegenerative Disease
14 Research (JPND2021-00694), and the UK Dementia Research Institute at UCL (UKDRI-1003).
15 KB is supported by the Swedish Research Council (#2017-00915 and #2022-00732) and the
16 Swedish state under the agreement between the Swedish government and the County Councils, the
17 ALF-agreement (#ALFGBG-715986 and #ALFGBG-965240).

18

19 **Competing interests**

20 MB has received a speaker fee from Biogen. JS has received material research support from
21 Synapsys and Interacoustics, and institutional consultancy fees from Mabion S.A. AFH has
22 received a consultant fee from Roche and AstraZeneca. TO received unrestricted research support
23 from Biogen, Merck, Sanofi, and Novartis. The same companies have provided honoraria for
24 advisory boards and/or lectures. None of these have had any relation to this study. HZ has served
25 at scientific advisory boards and/or as a consultant for Abbvie, Acumen, Alector, Alzinova,
26 ALZPath, Annexon, Apellis, Artery Therapeutics, AZTherapies, CogRx, Denali, Eisai, Nervgen,
27 Novo Nordisk, Optoceutics, Passage Bio, Pinteon Therapeutics, Prothena, Red Abbey Labs,
28 reMYND, Roche, Samumed, Siemens Healthineers, Triplet Therapeutics, and Wave, has given
29 lectures in symposia sponsored by Collectricon, Fujirebio, Alzecure, Biogen, and Roche, and is a
30 co-founder of Brain Biomarker Solutions in Gothenburg AB (BBS), which is a part of the GU

1 Ventures Incubator Program (outside submitted work). KB has served as a consultant, at advisory
2 boards, or at data monitoring committees for Abcam, Axon, BioArctic, Biogen,
3 JOMDD/Shimadzu, Julius Clinical, Lilly, MagQu, Novartis, Ono Pharma, Pharmatrophix,
4 Prothena, Roche Diagnostics, and Siemens Healthineers, and is a co-founder of BBS, outside the
5 work presented in this paper. IK has a collaborative research agreement with Neurogene INC and
6 has received lecture honoraria from Merck. PS will serve as an unpaid consultant for Moderna. VG,
7 PSt, DJ, RG, JH, JB, AL, LAM, TB, TW, OA, and SN report no disclosures.

8

9 **Supplementary material**

10 Supplementary material is available at *Brain* online.

11

12 **References**

- 13 1. Filippi M, Bar-Or A, Piehl F, Preziosa P, Solari A, Vukusic S, *et al.* Multiple sclerosis.
14 *Nature Reviews Disease Primers* 2018;4(1):43.
- 15 2. Olsson T, Barcellos LF, Alfredsson L. Interactions between genetic, lifestyle and
16 environmental risk factors for multiple sclerosis. *Nature Reviews Neurology*. 2017;13(1):25-36.
- 17 3. Abrahamyan S, Eberspächer B, Hoshi M-M, Aly L, Luessi F, Groppa S, *et al.* Complete
18 Epstein-Barr virus seropositivity in a large cohort of patients with early multiple sclerosis. *Journal*
19 *of Neurology, Neurosurgery and Psychiatry*. 2020;91(7):681-686.
- 20 4. Pakpoor J, Disanto G, Gerber JE, Dobson R, Meier UC, Giovannoni G, *et al.* The risk of
21 developing multiple sclerosis in individuals seronegative for Epstein-Barr virus: a meta-analysis.
22 *Multiple Sclerosis Journal*. 2013;19(2):162-166.
- 23 5. Lundström W, Gustafsson R. Human Herpesvirus 6A Is a Risk Factor for Multiple
24 Sclerosis. *Frontiers in Immunology*. 2022;13:840753.
- 25 6. Soldan SS, Leist TP, Juhng KN, McFarland HF, Jacobson S. Increased lymphoproliferative
26 response to human herpesvirus type 6A variant in multiple sclerosis patients. *Annals of Neurology*.
27 2000;47(3):306-13.

- 1 7. Virtanen JO, Färkkilä M, Multanen J, Uotila L, Jääskeläinen AJ, Vaheri A, *et al.* Evidence
2 for human herpesvirus 6 variant A antibodies in multiple sclerosis: diagnostic and therapeutic
3 implications. *Journal of NeuroVirology*. 2007;13(4):347-352.
- 4 8. Engdahl E, Gustafsson R, Huang J, Biström M, Lima Bomfim I, Stridh P, *et al.* Increased
5 Serological Response Against Human Herpesvirus 6A Is Associated With Risk for Multiple
6 Sclerosis. *Frontiers in Immunology*. 2019;10
- 7 9. Biström M, Jons D, Engdahl E, Gustafsson R, Huang J, Brenner N, *et al.* Epstein–Barr
8 virus infection after adolescence and human herpesvirus 6A as risk factors for multiple sclerosis.
9 *European Journal of Neurology*. 2021;28(2):579-586.
- 10 10. Ahlqvist J, Fotheringham J, Akhyani N, Yao K, Fogdell-Hahn A, Jacobson S. Differential
11 tropism of human herpesvirus 6 (HHV-6) variants and induction of latency by HHV-6A in
12 oligodendrocytes. *Journal of NeuroVirology*. 2005;11(4):384-394.
- 13 11. Cermelli C, Berti R, Soldan SS, Mayne M, D'Ambrosia J M, Ludwin SK, *et al.* High
14 frequency of human herpesvirus 6 DNA in multiple sclerosis plaques isolated by laser
15 microdissection. *The Journal of Infectious Diseases*. 2003;187(9):1377-87.
- 16 12. Goodman AD, Mock DJ, Powers JM, Baker JV, Blumberg BM. Human Herpesvirus 6
17 Genome and Antigen in Acute Multiple Sclerosis Lesions. *The Journal of Infectious Diseases*.
18 2003;187(9):1365-1376.
- 19 13. Opsahl ML, Kennedy PG. Early and late HHV-6 gene transcripts in multiple sclerosis
20 lesions and normal appearing white matter. *Brain*. 2005;128(Pt 3):516-27.
- 21 14. Sundström P, Juto P, Wadell G, Hallmans G, Svenningsson A, Nyström L, *et al.* An altered
22 immune response to Epstein-Barr virus in multiple sclerosis: a prospective study. *Neurology*.
23 2004;62(12):2277-82.
- 24 15. Simpson S, Jr., Taylor B, Dwyer DE, Taylor J, Blizzard L, Ponsonby AL, *et al.* Anti-HHV-
25 6 IgG titer significantly predicts subsequent relapse risk in multiple sclerosis. *Multiple Sclerosis*
26 *Journal*. 2012;18(6):799-806.
- 27 16. Chapenko S, Millers A, Nora Z, Logina I, Kukaine R, Murovska M. Correlation between
28 HHV-6 reactivation and multiple sclerosis disease activity. *Journal of Medical Virology*.
29 2003;69(1):111-7.

- 1 17. Berti R, Brennan MB, Soldan SS, Ohayon JM, Casareto L, McFarland HF, *et al.* Increased
2 detection of serum HHV-6 DNA sequences during multiple sclerosis (MS) exacerbations and
3 correlation with parameters of MS disease progression. *Journal of NeuroVirology*. 2002;8(3):250-
4 256.
- 5 18. Villoslada P, Juste C, Tintore M, Llorenç V, Codina G, Pozo-Rosich P, *et al.* The immune
6 response against herpesvirus is more prominent in the early stages of MS. *Neurology*.
7 2003;60(12):1944-8.
- 8 19. Tremlett H, Munger KL, Makhani N. The Multiple Sclerosis Prodrome: Evidence to
9 Action. Perspective. *Frontiers in Neurology*. 2022;12
- 10 20. Bjornevik K, Munger KL, Cortese M, Barro C, Healy BC, Niebuhr DW, *et al.* Serum
11 Neurofilament Light Chain Levels in Patients With Presymptomatic Multiple Sclerosis. *JAMA*
12 *Neurology*. 2020;77(1):58.
- 13 21. Jons D, Zetterberg H, Biström M, Alonso-Magdalena L, Gunnarsson M, Vrethem M, *et al.*
14 Axonal injury in asymptomatic individuals preceding onset of multiple sclerosis. *Annals of*
15 *Clinical and Translational Neurology*. 2022;9(6):882-887.
- 16 22. Bjornevik K, Cortese M, Healy BC, Kuhle J, Mina MJ, Leng Y, *et al.* Longitudinal analysis
17 reveals high prevalence of Epstein-Barr virus associated with multiple sclerosis. *Science*.
18 2022;375(6578):296-301.
- 19 23. Biström M, Alonso-Magdalena L, Andersen O, Jons D, Gunnarsson M, Vrethem M, *et al.*
20 High serum concentration of vitamin D may protect against multiple sclerosis. *Multiple Sclerosis*
21 *Journal – Experimental Translational and Clinical*. 2019;5(4)
- 22 24. Disanto G, Barro C, Benkert P, Naegelin Y, Schädelin S, Giardiello A, *et al.* Serum
23 Neurofilament light: A biomarker of neuronal damage in multiple sclerosis. *Annals of Neurology*.
24 2017;81(6):857-870.
- 25 25. Waterboer T, Sehr P, Michael KM, Franceschi S, Nieland JD, Joos TO, *et al.* Multiplex
26 human papillomavirus serology based on in situ-purified glutathione s-transferase fusion proteins.
27 *Clinical Chemistry*. 2005;51(10):1845-53.

- 1 26. Grut V, Biström M, Salzer J, Stridh P, Jons D, Gustafsson R, *et al.* Cytomegalovirus
2 seropositivity is associated with reduced risk of multiple sclerosis—a presymptomatic case–
3 control study. *European Journal of Neurology*. 2021;28(9):3072-3079.
- 4 27. Brenner N, Mentzer AJ, Butt J, Michel A, Prager K, Brozy J, *et al.* Validation of Multiplex
5 Serology detecting human herpesviruses 1-5. *PLoS One*. 2018;13(12):e0209379.
- 6 28. Grut V, Biström M, Salzer J, Stridh P, Lindam A, Alonso-Magdalena L, *et al.* Systemic
7 inflammation and risk of multiple sclerosis – A presymptomatic case-control study. *Multiple*
8 *Sclerosis Journal - Experimental, Translational and Clinical*. 2022;8(4)
- 9 29. Khalil M, Teunissen CE, Otto M, Piehl F, Sormani MP, Gattringer T, *et al.* Neurofilaments
10 as biomarkers in neurological disorders. *Nature Reviews Neurology*. 2018;14(10):577-589.
- 11 30. Benkert P, Meier S, Schaedelin S, Manouchehrinia A, Yaldizli Ö, Maceski A, *et al.* Serum
12 neurofilament light chain for individual prognostication of disease activity in people with multiple
13 sclerosis: a retrospective modelling and validation study. *Lancet Neurology*. 2022;21(3):246-257.
- 14 31. AlNimer F, Thelin E, Nyström H, Dring AM, Svenningsson A, Piehl F, *et al.* Comparative
15 Assessment of the Prognostic Value of Biomarkers in Traumatic Brain Injury Reveals an
16 Independent Role for Serum Levels of Neurofilament Light. *PLoS One*. 2015;10(7):e0132177.
- 17 32. Van Zeggeren IE, Ter Horst L, Heijst H, Teunissen CE, Van De Beek D, Brouwer MC.
18 Neurofilament light chain in central nervous system infections: a prospective study of diagnostic
19 accuracy. *Scientific Reports*. 2022;12(1)
- 20 33. Manouchehrinia A, Piehl F, Hillert J, Kuhle J, Alfredsson L, Olsson T, *et al.* Confounding
21 effect of blood volume and body mass index on blood neurofilament light chain levels. *Annals of*
22 *Clinical and Translational Neurology*. 2020;7(1):139-143.
- 23 34. Munger KL, Bentzen J, Laursen B, Stenager E, Koch-Henriksen N, Sørensen TI, *et al.*
24 Childhood body mass index and multiple sclerosis risk: a long-term cohort study. *Multiple*
25 *Sclerosis Journal*. 2013;19(10):1323-1329.
- 26 35. Liu Z, Zhang T-T, Yu J, Liu Y-L, Qi S-F, Zhao J-J, *et al.* Excess Body Weight during
27 Childhood and Adolescence Is Associated with the Risk of Multiple Sclerosis: A Meta-Analysis.
28 *Neuroepidemiology*. 2016;47(2):103-108.

- 1 36. Yamanishi K, Okuno T, Shiraki K, Takahashi M, Kondo T, Asano Y, *et al.* Identification
2 of human herpesvirus-6 as a causal agent for exanthem subitum. *Lancet.* 1988;1(8594):1065-7.
- 3 37. Wu J, Engdahl E, Gustafsson R, Fogdell-Hahn A, Waterboer T, Hillert J, *et al.* High
4 antibody levels against human herpesvirus-6A interact with lifestyle factors in multiple sclerosis
5 development. *Multiple Sclerosis Journal.* 2022;28(3):383-392.
- 6 38. Oskari Virtanen J, Jacobson S. Viruses and Multiple Sclerosis. *CNS & Neurological*
7 *Disorders - Drug Targets.* 2012;11(5):528-544.
- 8 39. Fierz W. Multiple sclerosis: an example of pathogenic viral interaction? *Virology Journal.*
9 2017;14(1)
- 10 40. Tengvall K, Huang J, Hellström C, Kammer P, Biström M, Ayoglu B, *et al.* Molecular
11 mimicry between Anoctamin 2 and Epstein-Barr virus nuclear antigen 1 associates with multiple
12 sclerosis risk. *Proceedings of the National Academy of Sciences.* 2019;116(34):16955-16960.
- 13 41. Lanz TV, Brewer RC, Ho PP, Moon JS, Jude KM, Fernandez D, *et al.* Clonally expanded
14 B cells in multiple sclerosis bind EBV EBNA1 and GlialCAM. *Nature.* 2022;603(7900):321-327.
- 15 42. Tejada-Simon MV, Zang YCQ, Hong J, Rivera VM, Zhang JZ. Cross-reactivity with
16 myelin basic protein and human herpesvirus-6 in multiple sclerosis. *Annals of Neurology.*
17 2003;53(2):189-197.
- 18 43. Hammarstedt M, Ahlqvist J, Jacobson S, Garoff H, Fogdell-Hahn A. Purification of
19 infectious human herpesvirus 6A virions and association of host cell proteins. *Virology Journal.*
20 2007;4(1):101.
- 21 44. Dunn N, Kharlamova N, Fogdell-Hahn A. The role of herpesvirus 6A and 6B in multiple
22 sclerosis and epilepsy. *Scandinavian Journal of Immunology.* 2020;92(6)
- 23 45. Flamand L, Stefanescu I, Ablashi DV, Menezes J. Activation of the Epstein-Barr virus
24 replicative cycle by human herpesvirus 6. *Journal of Virology.* 1993;67(11):6768-6777.
- 25 46. Cuomo L, Angeloni A, Zompetta C, Cirone M, Calogero A, Frati L, *et al.* Human
26 Herpesvirus 6 Variant A, but Not Variant B, Infects EBV-Positive B Lymphoid Cells, Activating
27 the Latent EBV Genome through a BZLF-1-Dependent Mechanism. *AIDS Research and Human*
28 *Retroviruses.* 1995;11(10):1241-1245.

1 47. Cuomo L, Trivedi P, de Grazia U, Calogero A, D'Onofrio M, Yang W, *et al.* Upregulation
2 of Epstein-Barr virus-encoded latent membrane protein by human herpesvirus 6 superinfection of
3 EBV-carrying Burkitt lymphoma cells. *Journal of Medical Virology*. 1998;55(3):219-26.

6 **Figure legends**

7 **Figure 1 Locally estimated scatterplot smoothing (loess) regression with 95% confidence**
8 **intervals for within-pair sNfL ratio against time to onset of multiple sclerosis.** (A) HHV-6A-
9 seropositive cases. (B) HHV-6A-seronegative cases. Within-pair sNfL ratio was calculated for
10 each matched case-control pair. Matched controls were included regardless of their HHV-6A
11 serostatus. The time to onset of multiple sclerosis was calculated as the interval from the sampling
12 date to the date of the first symptom indicative of multiple sclerosis. The time-points for significant
13 within-pair ratios of MFI (95% CI > 1.0) are marked with vertical red lines. Log₂
14 scaled y-axis, limited to a ratio of 2 in either direction. HHV-6A seropositivity was defined as a
15 seroresponse >50 MFI against HHV-6A antigen IE1A. HHV-6A, Human herpesvirus 6A; MFI,
16 median fluorescence intensity; sNfL, serum neurofilament light chain; IE1A, truncated immediate-
17 early protein 1 from HHV-6A.

18
19 **Figure 2 Time relation of HHV-6A antibodies and sNfL.** (A) Loess regression with 95% confidence
20 intervals for within-pair ratio of seroreactivity (MFI) for HHV-6A antigen IE1A against time to
21 clinical onset of MS. (B) Loess regression of within-pair sNfL ratio against time to onset
22 of multiple sclerosis, as previously reported.²¹ Within-pair ratios were calculated for each case and
23 matched control and a cut-off of 50 MFI. The time to onset of multiple sclerosis was calculated as
24 the interval from the sampling date to the date of the first symptom indicative of multiple sclerosis.
25 The time-points for significant within-pair ratios (95% CI > 1.0) are marked with vertical lines.
26 HHV-6A, human herpesvirus 6A; sNfL, serum neurofilament light chain; MFI, median
27 fluorescence intensity; loess, locally estimated scatterplot smoothing.

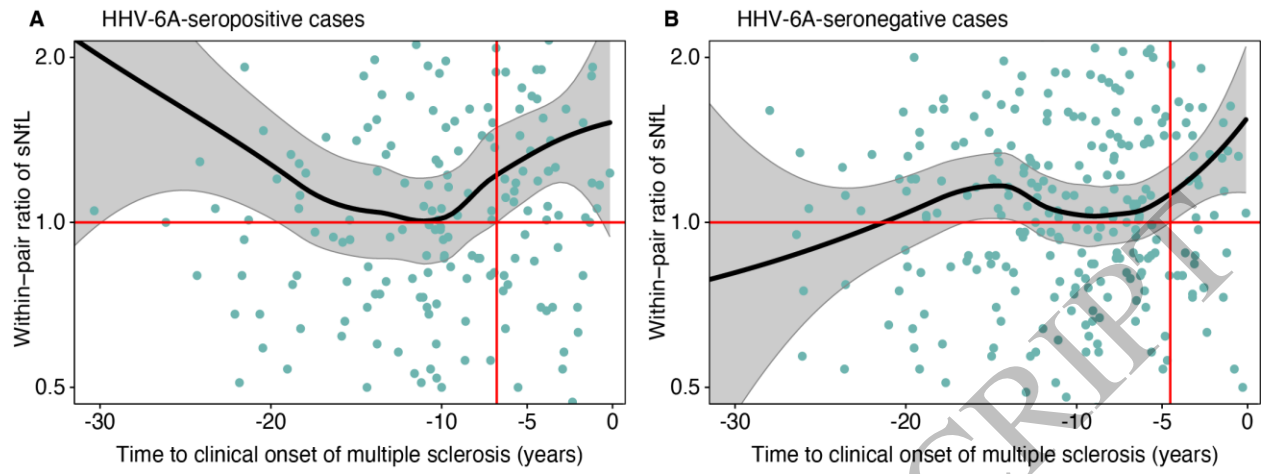


Figure 1
159x58 mm (x DPI)

1
2
3
4

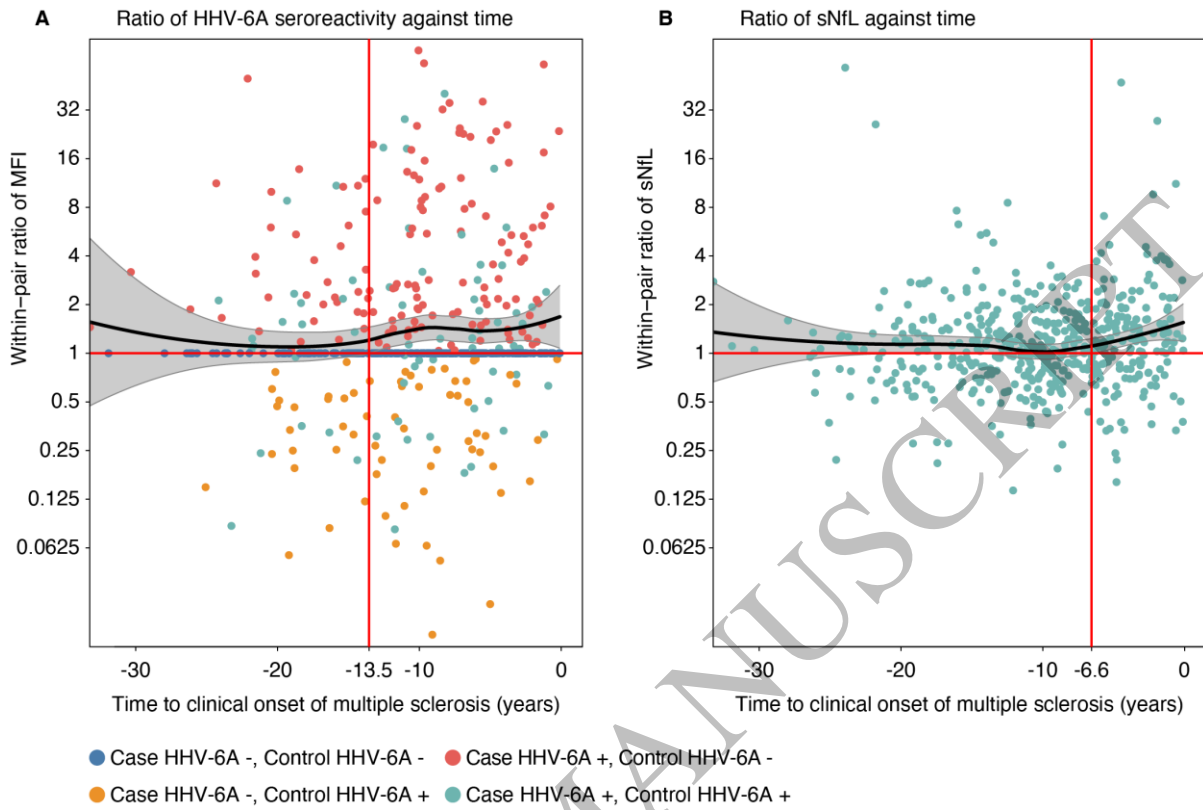


Figure 2
 159x106 mm (x DPI)

1
 2
 3
 4

1 **Table I Serostatus of HHV-6A and serum NfL in cases and controls**

	Cases			Controls			P
HHV-6A + (n, %)	208/519, 40%			132/519, 25%			<0.001 ^a
sNfL (geometric mean, pg/mL)	7.07 (6.70–7.45)			6.21 (5.93–6.50)			<0.001 ^b
	HHV-6A+	HHV-6A-	P	HHV-6A+	HHV-6A-	P	
sNfL (geometric mean, pg/mL)	7.65 (6.99–8.37)	6.70 (6.28–7.15)	0.02 ^c	6.35 (5.82–6.93)	6.16 (5.84–6.50)	0.57 ^c	
sNfL ratio (geometric mean)	1.21 (1.09–1.34)	1.09 (1.02–1.17)	0.11 ^c	0.88 (0.78–1.00)	0.88 (0.82–0.94)	0.92 ^c	
Age-adjusted sNfL z-score (mean)	1.12 (0.96–1.28)	0.92 (0.79–1.06)	0.07 ^c	0.76 (0.55–0.98)	0.73 (0.61–0.85)	0.79 ^c	

2 Mean values with 95% confidence intervals. The serum NfL ratio was calculated for each matched case-control set. Age-adjusted sNfL z-scores
3 were calculated with sNfL Reference Application. HHV-6A seropositivity was defined as a seroresponse >50 MFI against HHV-6A antigen IEI A.
4 HHV-6A, human herpesvirus 6A; sNfL, serum neurofilament light chain; MFI, median fluorescence intensity.

5 ^aMcNemar test.

6 ^bPaired-samples *t*-test.

7 ^cIndependent-samples *t*-test.
8

1 **Table 2 Linear regressions of serum NFL levels in cases and controls**

All sampling ages	Cases (n = 519)			Controls (n = 519)		
	sNFL level	95% CI	P	sNFL level	95% CI	P
HHV-6A+	+11%	(+0.2%–24%)	0.045	+1%	(–9%–12%)	0.84
EBV+	–6%	(–24%–16%)	0.56	–4%	(–19%–14%)	0.65
Male sex	+26%	(+10%–45%)	<0.001	+20%	(+7%–35%)	0.002
Age at sampling, per year	+2%	(+1%–3%)	<0.001	+2%	(+2%–3%)	<0.001
Sampling age below median (<24.7)		(n = 259)			(n = 259)	
HHV-6A+	+24%	(+6%–45%)	0.007	+5%	(–9%–20%)	0.50
EBV+	±0%	(–22%–29%)	0.99	–3%	(–21%–19%)	0.77
Male sex	+26%	(+4%–52%)	0.02	+12%	(–3%–30%)	0.13
Age at sampling, per year	±0%	(–2%–2%)	0.73	–1%	(–2%–1%)	0.36
Sampling age above median (≥24.7)		(n = 260)			(n = 260)	
HHV-6A+	+1%	(–13%–16%)	0.92	–1%	(–14%–14%)	0.88
EBV+	–3%	(–46%–75%)	0.93	+12%	(–16%–51%)	0.44
Male sex	+25%	(+2%–52%)	0.03	+27%	(+6%–52%)	0.01
Age at sampling, per year	+3%	(+1%–5%)	<0.001	+5%	(+3%–7%)	<0.001

2 Multiple linear regression with Log₁₀ sNFL as dependent variable. The estimates of sNFL levels are reported as percentage change, e.g., in cases,
3 seropositivity for HHV-6A was associated with an 11% higher level of sNFL. sNFL, serum neurofilament light chain, CI, confidence interval,
4 HHV-6A+, seropositive for human herpesvirus 6A; EBV+, seropositive for Epstein-Barr virus.

5