

## Global water resources and role of groundwater in a more resilient water future

Bridget R. Scanlon<sup>1</sup>, Sarah Fakhreddine<sup>1,2</sup>, Ashraf Rateb<sup>1</sup>, Inge de Graaf<sup>3</sup>, Jay Famiglietti<sup>4</sup>, Tom Gleeson<sup>5</sup>, Quentin Grafton<sup>6</sup>, Esteban Jobbagy<sup>7</sup>, Seifu Kebede<sup>8</sup>, Seshagiri Rao Kolusu<sup>9</sup>, Leonard F. Konikow<sup>10</sup>, Di Long<sup>11</sup>, Mesfin Mekonnen<sup>12</sup>, Hannes Mueller Schmied<sup>13</sup>, Abhijit Mukherjee<sup>14</sup>, Alan MacDonald<sup>15</sup>, Robert C. Reedy<sup>1</sup>, Mohammad Shamsudduha<sup>16</sup>, Craig T. Simmons<sup>17</sup>, Alex Sun<sup>1</sup>; Richard Taylor<sup>16</sup>, Karen G. Villholth<sup>18</sup>, Charles J. Vörösmarty<sup>19</sup>, and Chunmiao Zheng<sup>20</sup>

1. Bureau of Economic Geology, Jackson School of Geosciences, University of Texas at Austin, Austin, TX, USA
2. Department of Civil and Environmental Engineering, Carnegie Mellon University, Pittsburgh, Pennsylvania.
3. Water Systems and Global Change, Wageningen University, Wageningen, Netherlands
4. Global Institute for Water Security, National Hydrology Research Center, University of Saskatchewan
5. Dept. of Civil Engineering, University of Victoria, Victoria, British Columbia, Canada
6. Crawford School of Public Policy, Australian National University, Melbourne, Victoria, AU
7. Grupo de Estudios Ambientales, IMASL, CONICET, Universidad Nacional de San Luis, San Luis, Argentina
8. Center for Water Resources Research, School of Agricultural, Earth and Environmental Sciences, University of KwaZulu Natal, Durban, South Africa
9. UK Meteorological Office, Exeter, UK.
10. Leonard Konikow Hydrogeologist, Reston, Virginia, USA
11. Department of Hydraulic Engineering, Tsinghua University, Beijing, China
12. Department of Civil, Construction and Environmental Engineering, University of Alabama, Tuscaloosa, Alabama, USA.
13. Institute of Physical Geography, Goethe University Frankfurt, Frankfurt am Main, Frankfurt, Germany
14. School of Environmental Science and Engineering, Indian Institute of Technology Kharagpur, Kharagpur, India
15. British Geological Survey, Lyell Centre, Edinburgh, United Kingdom
16. Department of Geography, University College London, London, United Kingdom
17. National Centre for Groundwater Research and Training (NCGRT), College of Science and Engineering, Flinders University, Adelaide, SA, Australia
18. Water Cycle Innovation Ltd., Johannesburg, Gauten, S Africa
19. Environmental Sciences Initiative, Advanced Science Research Center at the CUNY Graduate Center, New York, USA
20. School of Environmental Science and Engineering, Southern University of Science and Technology, Shenzhen, China

**Abstract** [Au: I edited the abstract, can you please check it carefully?]

Water is a critical resource, but ensuring it is available faces challenges from climate extremes and human intervention. In this Review, we evaluate the current and historical evolution of water resources, considering surface water and groundwater as a single, interconnected resource. Gravity Recovery And Climate Experiment (GRACE) satellite data show declining, stable, and rising trends in total water storage **over the past two decades** in various regions globally. Groundwater monitoring provide longer term context over the past century, showing rising water storage in Northwest India, Central Pakistan, and Northwest United States and declining water storage in the US High Plains and Central Valley. Climate variability causes some changes in water storage but human intervention, particularly irrigation, is a major driver. Water-resource resilience can be increased by diversifying management strategies. These approaches include green solutions, such as forest and wetland preservation, and gray solutions, including increasing supplies (desalination, wastewater reuse), enhancing storage in surface reservoirs and depleted aquifers, and transporting water. A diverse portfolio of these solutions, in tandem with managing groundwater and surface water as a single resource, can address human and ecosystem needs while building a resilient water system.

Water is a critical resource, but ensuring it is available faces challenges from climate extremes and human intervention. In this Review, we evaluate the current and historical evolution of water resources, considering surface water and groundwater as a single, interconnected resource. Total water storage trends varied among regions over the past century. Some areas, including Northwest India, Central Pakistan, and Northwest United States, have seen rises in water storage over the past century. Others, including the US High Plains and Central Valley, have experienced net declines. Climate variability causes some changes in water storage but human intervention, particularly irrigation, is a major driver. Water-resource resilience can be increased by diversifying management strategies. These approaches include green solutions, such as forest and wetland preservation, and gray solutions, including increasing supplies (desalination, wastewater reuse), enhancing storage in surface reservoirs and depleted aquifers, and transporting water. A diverse portfolio of these solutions, in tandem with managing groundwater and surface water as a single resource, can address human and ecosystem needs while building a resilient water system.

## **TOC Summary**

Water resources are threatened by human activities and climate variability. This Review discusses trends in water storage and availability and examines ways to enhance water resource resilience through green and grey solutions.

- (1) Net trends in GRACE satellite total water storage range from  $-310 \text{ km}^3$  to  $260 \text{ km}^3$  total over a 19-year record in different regions globally caused by climate and human intervention.
- (2) Groundwater and surface water are strongly linked, with 85% of groundwater withdrawals sourced from surface water capture and reduced evapotranspiration and the remaining 15% derived from aquifer depletion.
- (3) Climate and human interventions caused loss of  $\sim 90,000 \text{ km}^2$  of surface water area over the last three decades, while  $184,000 \text{ km}^2$  of new surface water area developed elsewhere, primarily through filling reservoirs.
- (4) Human intervention impacts water resources directly through water use, particularly irrigation, and indirectly through land use change, such as agricultural expansion and urbanization.

(5) Strategies for increasing water-resource resilience include preserving and restoring forests and wetlands and conjunctive surface water and groundwater management.

## [H1] Introduction

An estimated 80% of the world's population faces high threats to water security<sup>1</sup>, with global water scarcity<sup>2,3</sup> increasing due to climate forcing, population growth, and economic development. Increasing climate extremes (droughts and floods)<sup>4</sup> result in growing spatiotemporal disconnects between water supply and demand, making it increasingly difficult to ensure reliable water and food supplies across the planet. Owing to extreme droughts and almost complete reliance on surface water<sup>5</sup>, some major cities have found themselves on the brink of running out of water, including Sao Paulo in 2015<sup>6</sup> and Cape Town in 2018<sup>7</sup>. These causes highlight the need to expand and diversify water supplies ahead of expected increases in climate extremes in the coming decades.

Combating water scarcity can be achieved through more sustainable water use, broadly defined as development that can be maintained indefinitely whereby minimizing adverse social, economic, and environmental impacts<sup>8</sup>. Moving toward more sustainable water management requires integrating multiple dimensions of water security, including human and ecosystem health, environmental and social justice, climate adaptation, and satisfying competing sectoral demands (agriculture, industry, and energy). These dimensions have trade-offs. For example, investments in engineered water infrastructure (such as large surface reservoirs) reduced threats to human water security by 95% in high income countries<sup>1</sup> but adversely impacted downstream communities and ecosystems. Tradeoffs become even more apparent in the context of the UN SDGs, as some goals short-circuit progress on others. For example, SDG-1 focuses on alleviating poverty through rapid economic development, which historically threatens the integrity of water resource systems emphasized under SDG-6<sup>17</sup>.

Water is central in the response to climate change and socioeconomic development, particularly recognizing water as a central link within the climate system, the world economy, and life support systems<sup>9</sup> (Fig. 1). As a result, the global dialogue surrounding water security has taken on new momentum. Water security-related initiatives have materialized across the highest levels of government, business, and civil society<sup>10-14</sup>. Between 2012 and 2020, water crisis appeared eight times among the top five high impact risks listed by the World Economic Forum<sup>10</sup>, and the 77<sup>th</sup> UN General Assembly in 2022 has issued a red alert on the issues of climate and water supply<sup>15</sup>.

In this Review, we discuss the status and trends in water development globally, emphasizing groundwater, the controls on water resource systems, and solutions that can be adopted to increase resilience of water resource systems. Previous reviews have primarily focused on either surface water or groundwater and separated quantity and quality issues. Here, we provide a comprehensive assessment of current and historic freshwater supplies considering surface water and groundwater as a single resource. Additionally, we re-analyze global satellite data to assess water resources (Supplementary Information). We evaluate dominant controls of water resource variability to inform effective solutions to pressing water resource challenges. We conclude by reviewing complementary nature-based solutions and traditional engineered approaches, discussing their potential interactions, benefits, and tradeoffs in enhancing resilience of water resource systems.

## [H1] Water-Resource Status and Evolution

The rising emphasis on the globalization of water resource challenges has been facilitated by the proliferation of satellite data<sup>16</sup>, global models<sup>17</sup>, global datasets<sup>1</sup>, and information on global food trade<sup>18</sup>. Increasing global data coverage of water uses and stressors, including watershed disturbance, pollution, and biotic factors, highlight the importance of assessing contemporary water challenges<sup>1</sup>. For example, the availability of satellite data for global water resource assessments has rapidly proliferated in the past two decades<sup>19</sup>; however, hydrologic systems have been evolving for over a century.

In this section, satellite data are reanalyzed and placed in the context of the longer-term evolution of water resources by leveraging a large body of previous modelling and ground-based monitoring studies. In particular, the ability to study and quantify long-term trends in water storages and fluxes (Fig 1) has been enabled by advances in global and regional modeling, including models that represent complex hydrologic processes such as surface water and groundwater interactions.

### [H2] Multi-decadal Variability in Water Resources

Gravity Recovery and Climate Experiment (GRACE) satellites provide a broad overview of water resource change, as the data products have coarse resolution ( $\sim 300$  km or  $\sim 90,000$  km<sup>2</sup>)<sup>20</sup> and allow evaluation of changes in terrestrial total water storage (TWS) over time, integrating snow, surface water, soil moisture, and groundwater, over the past two decades<sup>19,21</sup>. Early GRACE studies emphasized depletion trends in water storage and attributed most depletion to overexploitation of groundwater<sup>22</sup>. However, contemporary analyses emphasize dynamic TWS variability in many aquifers globally<sup>23</sup>. Thus, storage trends should be considered within the context of natural interannual variability, with trends exceeding 3 standard deviations of interannual variability (Trend to Interannual Variability Ratios, TIVRs) defined as exceptional in the original study<sup>24</sup>.

Due to difficulties in comparing GRACE TWS results from different studies because of varying time periods, GRACE data from April 2002 through August 2021 were reanalyzed here (Fig. 2). Hotspots of TWS depletion (shown by large declining TWS trends) are found in NE China (the Hai River Basin and North China Plain aquifer), N India (Ganges-Brahmaputra aquifer), NE S America (Sao Francisco basin), SW and SC US (Central Valley and C + S High Plains aquifers), E Europe (Don and Dnieper basins) and Middle East (Arabian Peninsula aquifer, Iran) with declines ranging from  $\sim 6$ – $19$  mm/yr (Fig. 2, Table 1). Examples of areas with rising TWS trends include W Africa (Iullemeden aquifer, Niger and Volta basins), the Upper Kalahari aquifer, N US (N High Plains aquifer, St Lawrence basin) and Central Canada. Net TWS trends range from  $-310$  km<sup>3</sup> (Iran) to  $261$  km<sup>3</sup> (Niger Basin) over the 19 yr GRACE record. Decadal TWS trends dominate over interannual variability in many of these regions whereas others exhibit more pronounced interannual variability relative to TWS trends (for example, the Upper Kalahari aquifer).

Variations in surface water bodies have been documented by Landsat satellite images. Between 1984 and 2015,  $\sim 90,000$  km<sup>2</sup> of previously permanent surface water bodies disappeared whereas  $184,000$  km<sup>2</sup> of new permanent water bodies developed elsewhere<sup>25</sup>. Most increases were linked to reservoir filling, with  $\sim 1,639$  km<sup>3</sup> of large surface reservoir capacity (Fig. 1) built during this timeframe (calculated from GRanD database)<sup>26</sup>. Surface water losses occurred predominately in the Middle East and Central Asia, related to drought and human intervention, including river diversions and unregulated water withdrawals.

Global hydrologic models are also widely used to evaluate spatiotemporal variability in water resources. Advances in global modeling include calculation of TWS to allow direct comparisons with GRACE TWS data. Comparison of global models with GRACE TWS shows that the models underestimate declining and

rising TWS changes, with opposite trends between land water storage between models (negative) and GRACE (positive) when all basins are considered<sup>27</sup>.

## [H2] Surface Water and Groundwater as a Single Resource

Despite being commonly regulated and managed as separate resources, surface water and groundwater are inherently interconnected and intersect at streambeds, floodplains, wetlands, and springs (Supplementary Information Section 3). Indeed, groundwater discharge accounts for ~50% of total annual streamflow (baseflow) in the US<sup>43</sup>, highlighting the need to conjunctively manage groundwater and surface water as a single resource.

Under natural (predevelopment) conditions, most aquifers are in a state of dynamic equilibrium, in which average inflows (recharge) balance average outflows with no change in the average volume of water stored in the aquifer (Figure 3). After development begins, this pumping or development creates an imbalance (Supplementary Fig. 3b) that must be compensated by decreased groundwater discharge to surface water, increased recharge, and/or a reduction (depletion) in groundwater storage, restoring the water balance (Supplementary Fig. 3c). During early stages of aquifer development, pumping is balanced by storage depletion. Over time, pumping is increasingly derived from capture, including decreased discharge to streams and decreased groundwater-fed evapotranspiration (ET)<sup>28</sup>, and/or increased recharge from surface water caused by declining water tables. Therefore, the importance of groundwater storage depletion decreases with time and capture of surface water increases as a result of decreased discharge to streams and ET. In fact, the magnitude of capture is much greater than storage loss.

In the US, for example, an estimated 85% of groundwater abstraction was derived from capture of surface water or ET with the remaining 15% derived from groundwater storage depletion<sup>28</sup>. The latter estimates are similar to values from previous studies, including global groundwater depletion estimates totaling 4,500 km<sup>3</sup> from 1900 – 2008 using calibrated groundwater models and volumetric budgets that consider capture<sup>29</sup>. This total groundwater depletion over the past century compares with annual groundwater use of ~800 km<sup>3</sup>/yr (Fig. 1).

Groundwater depletion estimates from global hydrologic models (such as PCR-GLOBWB model)<sup>3,30</sup> were originally based on groundwater abstraction minus recharge (flux approach), which ignores the connection between groundwater and surface water. Advances in global models consider the strong interaction between groundwater and surface water. Simulated cumulative groundwater storage depletion (1960 to 2010) ranged from ~27,000 km<sup>3</sup> (flux approach; ignoring capture and ET variations) to 4,200 km<sup>3</sup> (including capture and ET), equivalent to ~15% of the flux-approach estimate, similar to previous studies<sup>28, 29</sup> (Fig. 4a)<sup>31</sup>. Hence, global models that ignore capture could greatly overestimate groundwater depletion, unless constrained by other data.

Overestimation of groundwater depletion was also found in comparisons of early global model outputs and regional models and *in situ* monitoring in many US aquifers<sup>32</sup>. Global models indicate that excessive groundwater pumping has greatly reduced discharge to streams, with 15–21% of watersheds reaching critical environmental flow thresholds (for the wettest to driest climate projections, respectively)<sup>33</sup>. Regional models and field studies also show large reductions in stream baseflows<sup>34,35</sup>, corroborating the significant contribution of capture to groundwater abstraction and need to include capture in depletion estimates.

## [H2] Long-Term Evolution of Water Resources

Although the GRACE period of record is now almost two decades (2002 – 2022), it is relatively short considering that water development began in many regions in the early 1900s. Analysis of groundwater observation wells in Northwest India and Central Pakistan show century-long net increases in

groundwater storage of at least 350 km<sup>3</sup> (1900 – 2010; Fig. 4b)<sup>36</sup>. Groundwater storage peaked in the 1970s due to recharge from canal irrigation from 1900 – 1960 but later declined by ~25 – 100 km<sup>3</sup> from 2000 to 2010, equivalent to ~20% of the net groundwater accumulation from 1900–2000 (450 km<sup>3</sup>). This net increase in recharge since 1900 represents the largest anthropogenic unmanaged recharge globally. Net increases in groundwater storage were modeled in aquifers in the Northwest US, including the Columbia Plateau, peaking at ~ 20 km<sup>3</sup> in the 1950s to 1970s and declining to 11 km<sup>3</sup> in 2009 (Fig. 4b)<sup>37</sup>, and the East Snake River Plain aquifer, peaking at ~20 km<sup>3</sup> from 1940s through early 1960s and declining to 9 km<sup>3</sup> in 2019<sup>37</sup>. The storage increases are attributed to surface water irrigation in the early to mid-1900s that enhanced spring discharge in the Snake River Plain, whereas groundwater irrigation increased in the late 1900s to 2000s. These data support modeled net increases in groundwater storage from surface water irrigation in Northwest India, East Asia, and Northwest US using the WaterGAP global model<sup>2</sup>.

In contrast to rising trends in these regions, declining groundwater storage over the past century was found in the US Central and Southern High Plains and Central Valley based on groundwater level monitoring and regional modeling<sup>32,38,39</sup>. These storage declines are attributed to intensive groundwater irrigation in the High Plains, up to 10 times the aquifer recharge rates, and to switching from predominantly surface water irrigation to groundwater irrigation during drought in the Central Valley<sup>37</sup>.

## [H2] Water Scarcity

Water scarcity assessments have evolved to incorporate increasingly complex processes and refined scales (Supplementary Information, Section 5). Populations impacted by water scarcity increase from ~ 0.5 to 4 billion with increasing spatial resolution from country scale to ~ 50 km grid scale<sup>40</sup> and temporal resolution from annual to monthly<sup>41</sup>. Discrepancies arise as country-scale estimates use relative water demand (the ratio of withdrawal to long-term discharge) and do not account for the uneven spatial distribution of water supply and demand, both economic and population-driven<sup>42</sup>.

Early studies of water scarcity focused on water supply from surface water only, including renewable groundwater discharge<sup>40</sup> whereas later studies incorporated groundwater abstraction<sup>3,17</sup>. Many people in water insecure areas rely on groundwater storage to meet daily needs, highlighting the importance of groundwater in water availability metrics<sup>43,44</sup>.

## [H2] Linkages between Water Quantity and Quality

Degraded water quality further restricts the amount of water available for humans and ecosystems in many regions (Supplementary Information, Section 4). When degraded surface water quality was included in water scarcity studies, the global population impacted by water scarcity increased from 30% to 40% in one study<sup>45</sup> and from 33% to 65% in another<sup>1</sup>, highlighting the substantial decrease in usable water supplies attributed to unsafe water quality. Degraded groundwater quality also exacerbates issues of water scarcity, with prominent examples including groundwater contamination by naturally occurring (geogenic) arsenic mobilization, exposing an estimated 94-220 million people to high arsenic levels (>10 ug/L WHO guideline) in groundwater, with 94% residing in Asia<sup>46</sup>.

Complex, interconnected processes controlling both water quantity and quality are increasingly elucidated. For example, salinization of inland water bodies (such as lakes) in closed basins or endorheic basins reflect salt buildup from evaporative concentration over 1000s of years<sup>47,48</sup>. Water abstraction exacerbates salinization in some of these basins, such as the Aral Sea<sup>47</sup>. In addition, with ~40% of global population living within 100 km of the coastline, seawater intrusion is a critical issue impacting ~30% of



coastal metropolitan populations (cities with populations  $\geq 1$  million people)<sup>49</sup> and linked primarily to overexploitation of groundwater and also to sea level rise<sup>50</sup>.

## [H1] Drivers of Water Resources Variability

Understanding drivers of spatiotemporal variability in water resources is essential to developing solutions to water-resource issues. Climate and human intervention are major drivers of spatiotemporal variability in water resources, with feedbacks between the two further impacting water resources. Human intervention impacts water resources directly through water use and indirectly through land use change. These controls are described separately in the following section. However, it is important to assess linkages and feedbacks between various controlling factors. For example, precipitation and human intervention can work together to amplify the effects on water storage, as shown by increased groundwater pumping in the US Central Valley during drought<sup>51</sup>.

## [H2] Climate Controls

Observed and projected increases in temperature from human-induced climate change cause increases in global atmospheric moisture holding capacity<sup>52,53</sup>, intensifying the water cycle through rising evaporation and precipitation rates<sup>54,55</sup>. In addition, warming over land increases atmospheric evaporative demand, and subsequently, the severity of agricultural and ecological droughts<sup>56</sup>.

Most hotspots of water scarcity and climate variability are found in semiarid regions globally (Fig. 2). Increases in drought frequency, duration, and intensity have greatly affected water availability, such as the Millennium Drought in Australia<sup>57</sup>, decadal drought in the Colorado River Basin<sup>58</sup>, and droughts in the Middle East<sup>59</sup>, and in E and S Africa<sup>60</sup>. Many of these droughts and some drying in other regions, such as in Eurasia, have been linked to climate teleconnections related to El Niño Southern Oscillation (ENSO), North Atlantic Oscillation, Pacific Decadal Oscillation, and others<sup>51,61,62</sup>. Droughts often end in floods caused by intense precipitation related to climate teleconnections<sup>57</sup> or atmospheric rivers. In the US West Coast, for example, an estimated 33 – 74% of droughts end in landfalling atmospheric rivers<sup>63</sup>. Extreme events related to ENSO have been shown to positively impact groundwater resources through increased episodic recharge in semiarid regions<sup>64,65</sup>. Regions where irrigation is poorly developed and with high correlations between precipitation and GRACE-derived TWS variability reflect the importance of climate in controlling water storage, such as the Upper Kalahari Aquifer.

In addition to varying precipitation extremes, projected trends in precipitation to 2100 also vary globally (based on 25 Coupled Model Intercomparison Project (CMIP) Phase 6 models with climate change under Shared Socioeconomic Pathway 8.5). Precipitation is projected to increase in much of Sub-Saharan Africa, NW US, NE Brazil, and parts of China, and decrease in the Amazon and Mediterranean regions (Supplementary Fig. 2). In addition to isolated extremes and increasing variability in precipitation, predicted compound extreme events (such as concurrent heatwaves and droughts or storm surge and extreme rainfall)<sup>56</sup> will also impact water resources.

In addition to precipitation changes, climate changes have driven accelerated glacier mass loss in the 21<sup>st</sup> century<sup>66</sup>, which is concerning as mountain glaciers are critical for sustaining freshwater availability. Indeed, some of these losses are from major water towers (for example, the Brahmaputra in High Mountain Asia). Regional glacier mass loss is highly related to large-scale, decadal changes in temperature and precipitation<sup>66</sup>. Rapid glacier mass loss in the southeastern Tibetan Plateau, for example, is attributed mostly to rising temperatures<sup>67-69</sup>.



Continued glacier loss under global warming could weaken the buffering capacity of glaciers to climate change, leading to temporal shifts in upstream hydrograph patterns, variations in runoff and water supply<sup>70</sup>, and even droughts in downstream areas. This phenomenon is particularly true for densely populated water towers, such as the Indus and Ganges-Brahmaputra with high glacier concentration, intensive irrigation, and dense population<sup>71</sup>. In addition, warmer temperatures lead to earlier timing of glacial and snowmelt runoff, which decreases summer streamflow<sup>72</sup>. As a result, groundwater discharge to streams becomes increasingly important to maintain summer streamflow.

## [H2] Human Intervention

Human intervention impacts water resources directly through water use such as for irrigation, which accounts for 70% of global water withdrawal and 90% of water consumption<sup>73</sup>. Many hotspots of water scarcity globally correspond to intensively irrigated areas, mostly in semiarid regions (Fig. 2). In regions where water storage depletion is linked to human water use, primarily through groundwater-fed irrigation, correlations between climate forcing (precipitation) and TWS variability are generally low, such as in the Central and Southern High Plains aquifer, Arabian aquifer, and North China Plain aquifer (Table 1).

Various agricultural regions are in different phases of irrigation development, with reliance on surface water, groundwater, or both. Limited surface water resources in some regions restrict irrigation to groundwater, such as the Southern High Plains (Fig. 5a), resulting in steady groundwater depletion because demand greatly exceeds recharge rates<sup>74</sup>. However, many regions use surface water for irrigation during early stages of development, which increases groundwater recharge, as seen in the NW US, Ganges - Central Pakistan before the 1970s<sup>36</sup> (Fig. 5e) and Po Valley, Italy (Fig. 5c). Over time, increases in groundwater irrigation in these regions have reversed the initial rising storage trends. Irrigation impacts highlight the interconnections between groundwater and surface water and emphasize the importance of conjunctively managing both groundwater and surface water when available (for example, recent efforts to capture flood flows for managed aquifer recharge<sup>75,76</sup> in the US Central Valley<sup>74</sup>).

Human intervention indirectly affects water resources through land use change. Examples of land use change include cropland expansion, deforestation, wetland loss, and urbanization<sup>77</sup> with many land use changes inherently linked, such as cropland expansion with deforestation. A recent analysis shows that doubling of cropland and tripling of rangeland over the past century in urban source watersheds resulted in a 40% increase in sediment yield and 120% increase in nitrogen yield<sup>77</sup>. Forested areas (406 billion ha, Bha, 2018) represent ~31% of land surface but have been declining at a rate of 10 mha/yr since 2015, primarily as a result of cropland expansion<sup>78</sup>. Wetlands (1.2 Bha) are also declining rapidly due to land use change and climate drivers with an estimated 35% loss of natural wetlands from 1970 – 2015<sup>79</sup>. Wetland loss reduces water storage, flood attenuation, and water quality maintenance.

Replacement of native vegetation with cropland increased groundwater supplies in many parts of Australia, South America, Southwest US, and West Africa, related to increased recharge associated with shallower rooting depths and shorter growing seasons in cropland relative to native vegetation (Fig. 5)<sup>80,81,82</sup>. However, this land use change led to tradeoffs with dryland salinization in parts of Australia due to increasing ET of shallower groundwater<sup>83</sup>.

Irrigated agriculture causes both direct and indirect impacts on water resources, but the direct impacts of irrigation typically outweigh indirect effects (such as change in crop cover) on local water supplies. Additionally, the impact of agriculture development over time on water resources depends on the

topographic and hydrologic setting. In flat topographic settings with shallow water tables, increasing recharge from dryland crop expansion may be linked to waterlogging, flooding, and salinization (dark green belts, Fig. 5a-c and f). However, very shallow groundwater ( $\leq 3$  m) can also supply water directly to crops, buffering the impact of droughts, as in parts of South America<sup>84</sup>. The semiarid Pampas and Chaco regions of S America have experienced rising water tables with doubling of dryland grain production over the past three decades, displacing perennial pastures, native grasslands, and dry forests<sup>81,85</sup>. Other non-irrigated farming belts located in extremely flat settings with dry climates could be experiencing similar trends, as suggested for the Canadian prairies<sup>86</sup>.

## [H1] Enhancing Water Resource Resilience

Resilience can be achieved by developing a diverse portfolio of solutions, ranging from increasing supplies, reducing demands, nature-based solutions, and storing and transporting water, to address multipronged issues, including water scarcity and excess and water quality degradation. Conjunctive management of surface water and groundwater is an increasingly critical component of water management, where both are available, to holistically address climate and human stressors on water resources. Additionally, resilience will require multiple approaches with redundancies as backup and therefore the most resilient systems will probably not be the most efficient systems. In this section, approaches to enhance water resource resilience are discussed.

### [H2] Increasing Water Access and Supplies

Many people still lack access to water because of economic and/or governance constraints. Developing freshwater resources in regions with historically undeveloped groundwater can help improve freshwater access for the 20 billion people without safely managed drinking water, with the most pronounced regions being sub-Saharan Africa and Oceania<sup>87</sup>. Although many countries in Africa appear water stressed in global water scarcity indices, when factoring in groundwater storage<sup>43</sup> and the relatively small demand of drinking water, universal coverage for drinking water could be achieved with little impact on regional water stress<sup>88</sup>. Therefore, exploration and use of groundwater resources, particularly in rural areas of Africa, can help meet SDG-6 and support economic development<sup>88</sup>. Boreholes equipped with hand pumps when maintained offer the most sustainable supply through long periods of drought in low-income settings<sup>90</sup>.

Water security in rapidly urbanizing areas would benefit from improved water sanitation<sup>91</sup> and diversification of sources. Increasing groundwater development in regions that traditionally relied on surface water (for example, Cape Town, South Africa, and Sao Paulo Brazil) would greatly improve resilience in these rapidly urbanizing areas (for example, Cape Town, Sao Paulo)<sup>92</sup>. However, intensive groundwater development has also negatively impacted some regions, such as by causing land subsidence in Mexico City (Mexico), Jakarta (Indonesia), Tehran (Iran), and the Central Valley<sup>93</sup>. Conjunctively managing both surface water and groundwater, where possible, can reduce subsidence and enhance resilience, as in the US Arizona Basin and Range aquifers<sup>39,94</sup>.

Many regions experiencing scarcity and overexploitation of water resources have traditionally responded with supply-side solutions, including developing conventional and unconventional water supplies such as wastewater reuse and desalination. Alternative water supplies, including wastewater reuse and recycling and desalination, constitute a relatively small (Fig. 1) but growing fraction of water supply portfolios. These approaches provide a water source that is effectively independent of climate variability.

Wastewater reuse and recycling can enhance water resources in urban and peri-urban areas where sufficient wastewater volumes are available and collected, with the added benefit of reducing pollutant discharges to the environment. Wastewater production scales with urbanization and economic development, and is projected to double by 2050<sup>95</sup>. However, infrastructure gaps for collecting and treating wastewater limit the potential for wastewater reuse, particularly in low and middle income countries<sup>96</sup>. Globally, ~360 km<sup>3</sup>/yr of wastewater is produced from domestic and industrial sources<sup>95,97</sup> (Fig. 1) with ~63% of global production collected (227 km<sup>3</sup>) and 52% treated (187 km<sup>3</sup>), indicating that the remaining 48% is discharged without treatment into the environment<sup>97</sup>. Of this production, 11% of wastewater was reused (41 km<sup>3</sup> globally), mostly in the Middle East, North Africa, and Europe<sup>97,98</sup>. Wastewater is primarily reused for irrigation, accounting for ~85% of irrigation water in Israel and ~70% in Spain<sup>99,100</sup>.

Desalination is also increasingly promoted, particularly in coastal regions<sup>101</sup> and areas with brackish groundwater<sup>102</sup>. From 2000 – 2010, ~6,000 desalination plants were producing ~35 km<sup>3</sup>/yr of water globally (Fig. 1), with about half of the capacity in the Middle East and North Africa<sup>103</sup>. Desalinated water is used primarily for domestic and industrial purposes<sup>104</sup> but also for irrigation in some Mediterranean countries<sup>105</sup>. Desalination of seawater and inland saline surface water could potentially be expanded to ~160 km<sup>3</sup>/yr, reducing water scarcity from severe to moderate levels<sup>45</sup>. The global population supported by desalination could triple from 2015 to 2050<sup>101</sup> with the highest potential for desalination in the US, China, India, and some European countries. However, managing brine waste from desalination is critical as estimated global brine waste production from desalination (~52 km<sup>3</sup>/yr; 2000 – 2010) was ~50% greater than the global production of desalinated water<sup>103</sup>. Seawater desalination is considered more energy intensive than recycling wastewater when the energy in wastewater is recovered<sup>106</sup>, resulting in higher prices and greenhouse gas emissions compared to wastewater reuse. Desalination is still cost prohibitive in most regions and managing the resulting brine waste is difficult, limiting the applicability of desalination for increasing water resources at large scales.

## [H2] Reducing Water Demand

Because irrigation accounts for most water use<sup>73</sup> and is a large contributor to water quality degradation<sup>107</sup>, there is an emphasis on reducing irrigation water demand. One approach for reducing irrigation would be to relocate crop production from semiarid to more humid regions, as suggested by a study exploring moving crop production from the semiarid Central Valley to the more humid Mississippi Basin, USA<sup>108</sup>. Additional approaches include switching to less water intensive crops and fallowing cropland, particularly in drought years<sup>109,110</sup>. Increasing irrigation efficiency by shifting from flood to sprinkler and drip systems can also reduce water quality impacts from agricultural runoff. Getting “more crop per drop” in both irrigated and rainfed crop production<sup>111,112</sup> can be supported by reducing non-beneficial evaporation through mulching, deficit irrigation, and proper nutrient management. Deficit irrigation is practiced in many regions and constitutes ~70% of irrigation in the Southern High Plains<sup>113</sup>; however, it can cause soil salinization<sup>114</sup>.

Increasing irrigation efficiency to reduce water demand is not straightforward, though. Increasing irrigation efficiency at a farm or field level in many regions has led to expansion of irrigated areas and reduced seepage and return flows, leading to net increase in water consumption at the basin or aquifer scale<sup>110,115,116</sup>. This observation is similar to the concept of Jevons Paradox, where increasing water supplies result in rising demands through a rebound effect<sup>117</sup>. Jevons paradox illustrates the need for water managers and regulators to be aware of unintended consequences and behavior of water users in order to consider policy changes or other approaches to ensure benefits to water resources.

Moreover, full water accounting of inflows, return flows and outflows, along with the change in groundwater storage, is necessary to determine whether irrigation efficiency can conserve water. For example, a detailed evaluation of irrigation in the Murray Darling Basin in SE Australia indicated that the \$5.8 billion investment in infrastructure subsidies failed to deliver the projected environmental benefits, in part, due to a lack of comprehensive accounting of return flows at the basin level<sup>116</sup>. The source of irrigation water is also critical as losses (inefficiencies) of surface water irrigation could (beneficially) recharge underlying aquifers, as highlighted by recharge from canal irrigation in Northwest India and Central Pakistan<sup>118</sup>.

Other approaches to reduce water demand are also implemented. For example, rationing of irrigation water in different regions in China by controlling water abstractions by farmers using smartcard systems with ATM machines<sup>119,120</sup>. Other conservation tactics include promoting urban agriculture such as vertical indoor farms and aquaponics<sup>121-124</sup>, reducing food loss and waste, and dietary changes that reduce water use. An estimated third of global food produced for human consumption is lost or wasted<sup>125</sup>, accounting for ~23–24% of total water, cropland, and fertilizer use<sup>126</sup>, so reducing this wastage would reduce water usage.

## [H2] Nature-based Solutions

There is increasing interest in nature-based or “soft path” solutions (for example, decentralized systems, ecosystem services) to solve water resource issues<sup>127</sup>. Because agricultural expansion represents the most widespread land use change, a variety of best management practices have been proposed such as conservation tillage, reduced fertilization, cover crops, terraces, and agroforestry to reduce sediment and nutrient yield to downstream watersheds and cities<sup>128</sup>.

Many source watersheds to large urban areas would greatly benefit from protecting their contributing watersheds, with conservation costs partially offset by the reduced water treatment costs in urban areas<sup>129</sup>. An excellent example is New York City, which works with landowners in the contributing watersheds to maintain the forested areas (75% of land area) and apply best management practices to agricultural areas to avoid building an 8 – 10 billion dollar treatment plant<sup>92</sup>. Local farmers are compensated to protect headwater catchments<sup>130</sup>. The City of Sao Paulo could reduce sediment and nutrient loading by restoring some forested areas, 70% of which were lost in the past<sup>6,92</sup>. Nature based solutions are also proposed for the City of Cape Town<sup>131</sup> where partial removal of invasive species such as eucalyptus could greatly reduce water demand. Removal of invasive species relative to projected water supply increases is estimated to cost approximately one tenth of other strategies, such as groundwater development, wastewater reuse, and desalination.

Large scale nature-based solution projects have been undertaken in China. Ecological restoration projects have been conducted throughout the Loess Plateau, including grassland developed and forest and shrubland restoration, reducing runoff by ~ 70% and sediment loss by almost 100%<sup>132</sup>. Several wetland restoration projects have been developed, particularly in the middle reaches of the Yangtze to manage flooding and in parts of the Tibetan Plateau to protect the headwaters of the Yangtze, Yellow, and Mekong rivers<sup>133</sup>. Other examples include restoration of ~200 water bodies in the city of Chennai to collect stormwater and recharge groundwater<sup>134</sup>, emphasizing the importance of legally protecting areas, especially in urban watershed source areas<sup>135</sup>. The Sponge City Program, developed in China in 2013, has been deployed in 30 cities to mitigate urban flooding, purify stormwater, and provide water storage for future use, and enhance public amenities<sup>136</sup>.

During planning, co-benefits associated with nature-based solutions should be considered, such as biodiversity, carbon sequestration, and greenhouse gas impacts. However, tradeoffs also need to be

considered, such as in forest restoration in parts of Africa where flood risk and pollution are reduced but downstream water quantities are as well<sup>137</sup>.

## [H2] Storing Water

Managed water storage, including surface reservoirs and subsurface storage in aquifers, can resolve temporal disconnects between supply and demand caused by climate extremes (floods and droughts). Declining natural storage in snowpack as part of climate change<sup>138</sup> underscores the need to develop additional storage capacity to offset climate impacts.

Globally, an estimated 58,000 large dams ( $\geq 15$  m high) provide an aggregated storage capacity of  $\sim 7,000 - 8,300 \text{ km}^3$  (Fig. 1)<sup>139</sup>. Single purpose dams are built for irrigation ( $\sim 50\%$ ), hydropower (21%), and water supply (12%)<sup>140</sup>. However, mismanaged dams disrupt ecological connectivity of rivers and downstream water quantity and quality<sup>26</sup>. Although dam construction has already peaked in some (especially high-income countries because suitable storage sites have been maximally developed, advances in forecast skill level foster efforts to optimize storage at existing sites using forecast-informed reservoir operations (FIRO), as demonstrated in Lake Mendocino, California, US<sup>141,142</sup>. FIRO involves transferring excess surface water prior to flooding from reservoirs to adjacent depleted aquifers to enhance water storage. The Ganges Water Machine also provides another example of conjunctive management of surface water and groundwater to enhance water storage<sup>143,144</sup>. Expanded groundwater-fed irrigation during non-monsoon periods provides increased space to store flood waters from the three-month monsoon period enhancing surface-subsurface water exchange

Dam construction is markedly increasing in low and middle income countries where there is still large potential for reservoirs<sup>145</sup>. About 3,700 hydroelectric dams are under construction or planned, mostly in South America, South and East Asia, and Africa<sup>146,147</sup>. There are drawbacks to using reservoirs to increase water shortages. For example Filling the Grand Ethiopian Renaissance Dam (GERD,  $74 \text{ km}^3$  capacity) could greatly reduce reservoir levels in the High Aswan Dam reservoir downstream and management of both reservoirs will be required to address multi-year droughts<sup>148</sup>. based on the Jevons Paradox, as noted earlier with respect to irrigation efficiency, where increasing water supplies can increase demands and make systems more vulnerable to shortages<sup>149</sup>.

There is growing interest in storing water in depleted aquifers using managed aquifer recharge (MAR), the process of artificially infiltrating or injecting water into the subsurface for storage and later recovery. Moreover, with increasing climate extremes, there is rising interest in capturing flood flows and storm flows to recharge depleted aquifers<sup>150,151</sup>. The annual volume of water stored globally through MAR has increased to  $\sim 10 \text{ km}^3$  in 2015 (Fig. 1)<sup>152</sup>. Although MAR storage volumes are low relative to surface reservoirs, MAR can be an extremely important local-scale strategy to help alleviate regional water stress. For example, in Orange County, CA (USA), MAR is an essential component of local water supply portfolio and provides enough water for 850,000 people, in addition to co-benefits such as preventing sea water intrusion and improving water quality<sup>153</sup>. Depletion of aquifer storage in the U.S. has been estimated at  $\sim 1,000 \text{ km}^3$  between 1900 and 2008, exceeding the capacity of new surface reservoirs ( $673 \text{ km}^3$ )<sup>29,154</sup> constructed during that period. This legacy of aquifer depletion represents a large potential subsurface reservoir capacity to support MAR, even considering permanent aquifer storage loss from compaction (for example,  $\sim 20\%$  in California)<sup>39</sup>. MAR projects can further expand local storage options through conjunctive management of traditional surface reservoirs with co-located MAR facilities. Although MAR can have multiple benefits, including mitigating land subsidence and ecosystem

restoration, there can also be adverse impacts on the environment, including water logging, soil salinization, and water quality degradation<sup>155</sup>.

## [H2] Transporting Water

Water can be transported physically through aqueducts and pipelines or virtually through trade of food and other commodities. Physical water transfers over large distances are energy intensive and often not considered a viable option due to high cost. Global water transfer megaprojects are those with construction costs  $\geq$ US\$1 billion, distances  $\geq$ 190 km, and volumes  $\geq$ 0.23 km<sup>3</sup>/yr<sup>156</sup>. Currently, there are 34 existing megaprojects and 76 planned or proposed with primary uses for irrigation followed by hydroelectricity and multipurpose projects. Most of these megaprojects transfer surface water and have affiliated impoundment infrastructures. Existing megaprojects transfer a total of 204 km<sup>3</sup>/yr (Fig. 1) across distances up to 2,820 km (Great Manmade River, Libya) and 1,128 km (California State Water Project, US). Projected transfer volumes for planned or proposed projects are an order of magnitude greater than existing projects (1,910 km<sup>3</sup>/yr) with total pipeline distances exceeding twice the Earth's circumference (80,000 km). For example, the South to North Water Diversion Project (SNWDP) megaproject in China was designed to supply water for municipal and industrial uses, transporting up to 45 km<sup>3</sup>/yr via diversions from the Yangtze River in the humid south to cities in the semiarid north. Part of the transferred water through the SNWDP is used to recharge depleted aquifers through MAR<sup>157</sup>. Potential benefits of megaprojects include ecological restoration (as seen, for example, in the Florida Everglades), flood control in donor basins, wetland restoration in receiving basins (for instance, the Mississippi transfer project; Peacock River Transfer Project), and subsidence reduction (as in the Central Arizona Project). Negative environmental tradeoffs include runoff reduction in river discharge in donor basins and increased pollution, salinization, and drying of lakes (for example, Aral Sea)<sup>158</sup>.

In addition to physical water transfers, countries have for decades relieved water stress by importing virtual water from more water abundant countries (Fig. 6)<sup>159,160,161</sup>. Virtual water is defined as the water consumed to generate products, such as food, but not reflected in the water content of the final product, and is transported virtually with the traded products<sup>18</sup>. If water-intensive products are traded from nations of high to low water productivity, virtual water imports result in water savings for importing countries as well as global water savings.

Globally, blue virtual water flows (sourced from surface water and groundwater) totaled  $\sim$ 301 km<sup>3</sup>/yr from 1996 to 2005<sup>162</sup>. Crops and derived crop products account for the largest share of virtual blue water flows between countries (Fig. 6). However, groundwater depletion is widespread in major exporting regions. Substantial nonrenewable groundwater flows embodied in international trade were found from South Asia to West Asia and from North America to East Asia<sup>163,164</sup>. Major virtual groundwater exporters include the US (31% of global total), India (15%), and Pakistan (13%). Major crops responsible for unsustainable virtual groundwater flows are wheat, maize, rice, sugarcane, cotton, and fodder<sup>165</sup>.

Water transfers can also be facilitated through water markets, allowing temporary lease or permanent transfer of groundwater or surface water rights. Water markets can regulate supply and demand by reallocating water from low to high value users. Large differences in the marginal values of water across users result in inefficiencies in water use and, conversely, opportunities to reallocate water among users. In 2019-2020, water markets were worth over 2.4 billion US dollars in traded permanent water rights. An independent review of these water markets concluded that economic impacts were net



positive, particularly in times of drought when some high-value uses of water would, otherwise, not be possible without water trades from lower value uses.

With few exceptions<sup>166</sup>, water markets do not account for non-market values that can include *small scale* water users and ecosystem services of streamflows or groundwater. Definitions of *de minimis* groundwater use typically focus on negligible extraction for domestic purposes. For example, California's Sustainable Groundwater Management Act defines *de minimis* groundwater use as extraction for domestic purposes of 2 acre feet per year or less. Therefore, checks are required to ensure that trading does not impact ecosystems and water supply for marginalized or low-income groups<sup>167</sup>. Some markets do implement trading rules (such as zonal trading restrictions) to limit impacts on ecosystems or *de minimis* users. The Murray-Darling Basin developed one of the world's largest water markets by unbundling land from water rights to promote trade<sup>168</sup>.

## [H1] Summary and Future Perspectives

Recognizing that surface water and groundwater behave as a single resource is essential for managing water resources. Surface reservoirs store large volumes of water (7,000 -8,300 km<sup>3</sup>), but these reservoirs are more vulnerable to long-term droughts than aquifers. Groundwater plays a critical role in resilience as it buffers spatiotemporal variability in surface water<sup>169</sup>. However, aquifers are far more difficult to manage on a large-scale basis, rendering them more susceptible to overexploitation.

Where available, utilizing both surface water and groundwater through conjunctive management, in addition to developing alternative supplies, builds redundancy and resiliency into water resource systems. For example, excess surface water during wet periods can be temporally reallocated by storing water in depleted aquifers for use during dry periods. Water policies often hamper conjunctive management due to separate legal frameworks for surface water and groundwater that persist in most countries. There is growing recognition of the need to close the governance gap of groundwater in integrated water resources management, with both UN Water World Water Day and the World Water Development Report dedicated to groundwater in 2022.

Increased satellite data, advances in global and regional modeling, and expanded ground-based monitoring networks have revolutionized understanding of water quantity. In contrast, the overall lack of global water quality monitoring continues to constitute a major shortcoming in assessing water resources<sup>170</sup>. Most countries do not routinely collect water quality data, placing over 3 billion people at risk for health concerns because they rely on water of unknown chemical or biological character<sup>171</sup>. To improve data coverage, the UN Water Program is building a global water quality database, GEMStat, including surface water (73% of stations) and groundwater (27% of stations)<sup>172</sup>.

An improved understanding of climate drivers and overexploitation of water resources highlights the severity of water resource challenges, and also enables and informs more effective future water management that can account for complex feedbacks in water systems (such as tradeoffs in water quantity and quality). More than ever, water managers have a large body of operational and scientific knowledge that can be used to develop diverse water management portfolios. These strategies extend beyond traditional engineering approaches that have been relied on historically and emphasize nature-based solutions, economic incentives, and the importance of water governance<sup>173,174</sup> to achieve desirable outcomes. Not only does a portfolio of solutions build resilience to climate and human stressors on water supplies, but it also provides an opportunity to maximally achieve co-benefits for ecosystems and human water users.

In sum, there is no single, one-size-fits-all solution for achieving resilient water resources; rather, resilience will be achieved through a portfolio of water management options. The relative importance of



specific approaches (such as increasing water supplies, reducing water demand, storing water, and/or transferring water) will vary in a given region depending on local stressors and water uses. Regardless of the specific approach, it is critical that groundwater and surface water are managed as a single resource going forward.

## References

- 1 Vorosmarty, C. J. *et al.* Global threats to human water security and river biodiversity. *Nature* **467**, 555-561, doi:10.1038/nature09440 (2010).
- 2 Doell, P., Mueller Schmied, H., Schuh, C., Portmann, F. T. & Eicker, A. Global-scale assessment of groundwater depletion and related groundwater abstractions: Combining hydrological modeling with information from well observations and GRACE satellites. *Water Resources Research* **50**, 5698-5720, doi:10.1002/2014wr015595 (2014).
- 3 Wada, Y. *et al.* Global depletion of groundwater resources. *Geophys. Res. Lett.* **37**, L20402, doi:10.1029/2010GL044571., doi:L2040210.1029/2010gl044571 (2010).
- 4 Douville, H., Raghavan, K., Renwick, J., Allan, R. P., Arias, P. A., Barlow, M., Cerezo-Mota, R., Cherchi, A., Gan, T. Y., Gergis, J., Jiang, D., Khan, A., Pokam Mba, W., Rosenfeld, D., Tierney, J. and Zolina,. Water Cycle Changes. Climate Change 2021: The Physical Science Basis. Contribution of Working Group I to the Sixth Assessment Report of the Intergovernmental Panel on Climate Change. [Masson-Delmotte, V., P. Zhai, A. Pirani, S.L. Connors, C. Péan, S. Berger, N. Caud, Y. Chen, L. Goldfarb, M.I. Gomis, M. Huang, K. Leitzell, E. Lonnoy, J.B.R. Matthews, T.K. Maycock, T. Waterfield, O. Yelekçi, R. Yu, and B. Zhou (eds.)]. Cambridge University Press, Cambridge, United Kingdom and New York, NY, USA, pp. 1055–1210, doi:10.1017/9781009157896.010. (2021).
- 5 Olivier, D. W. & Xu, Y. X. Making effective use of groundwater to avoid another water supply crisis in Cape Town, South Africa. *Hydrogeology Journal* **27**, 823-826, doi:10.1007/s10040-018-1893-0 (2019).
- 6 Ozment, S. *et al.* Natural infrastructure in Sao Paulo's water system. *World Resources Institute Rept. 2013 - 2014: Interim Findings*, 84 p. (2018).
- 7 Pascale, S., Kapnick, S. B., Delworth, T. L. & Cooke, W. F. Increasing risk of another Cape Town “Day Zero” drought in the 21st century. *Proceedings of the National Academy of Sciences* **117**, 29495, doi:10.1073/pnas.2009144117 (2020).
- 8 Alley, W. M., Reilly, T. E. & Franke, O. L. Sustainability of ground-water resources. *U.S. Geological Survey Circular 1186*, 79 p. (1999).
- 9 Breslin, S. COP26 has 4 goals. Water is central to all of them. SIWI News, 27 Oct. 2021. Accessed:<https://siwi.org/latest/cop26-has-4-goals-water-is-central-to-all-of-them/>. (2021).
- 10 Forum, W. E. Global Risks 2021, 16th Edition. Geneva: World Economic Forum (2021). <https://www.weforum.org/reports/the-global-risks-report-2021/> (2021).
- 11 OECD. The Water Challenge: The Roundtable on Water Financing. At: [www.oecd.org/water/roundtable-on-financing-water.htm](http://www.oecd.org/water/roundtable-on-financing-water.htm). (2022).
- 12 WWAP/UN-Water, U. The United Nations World Water Development Report 2018: Nature-Based Solutions for Water. *United Nations World Water Assessment Program, UNESCO*, 138 p. (2018).
- 13 Browder, G., Ozment, S., Rehberger-Bescos, I., Gartner, T. & Lange, G. M. Integrating Green and Gray: Creating Next Generation Infrastructure. *World Bank Group, World Resources Institute*, 134 p., <https://openknowledge.worldbank.org/handle/10986/31430> (2019).
- 14 HLPW. Making Every Drop Count: Agenda for Water Action, H. L. P. o. W. O. D. U. N. a. W. B., 2018. 34 pp. Making Every Drop Count: Agenda for Water Action, High Level Panel on Water Outcome Document. *High Level Panel on Water, United Nations and World Bank*, 2018. 34 pp. (2018).
- 15 Lederer, E. M. Next UN assembly president warns world in dangerous crisis. Washington Post, 7 June 2022. Accessed at: <https://www.washingtonpost.com/world/next-un-assembly-president->

- [warns-world-in-dangerous-crisis/2022/06/07/55075dce-e6b6-11ec-a422-11bbb91db30b\\_story.html](https://www.nature.com/articles/s41586-022-01111-1). (2022).
- 16 Tapley, B. D. *et al.* Contributions of GRACE to understanding climate change. *Nature Climate Change* **9**, 358-369, doi:10.1038/s41586-019-0456-2 (2019).
- 17 Wada, Y. & Bierkens, M. F. P. Sustainability of global water use: past reconstruction and future projections. *Environmental Research Letters* **9**, doi:10.1088/1748-9326/9/10/104003 (2014).
- 18 Mekonnen, M. M. & Hoekstra, A. Y. Blue water footprint linked to national consumption and international trade is unsustainable. *Nature Food* **1**, 792-800, doi:10.1038/s43016-020-00198-1 (2020).
- 19 Rodell, M. *et al.* Emerging trends in global freshwater availability. *Nature* **557**, 651-659, doi:10.1038/s41586-018-0123-1 (2018).
- 20 Save, H., Bettadpur, S. & Tapley, B. D. High-resolution CSR GRACE RL05 mascons. *J. Geophys. Res.-Solid Earth* **121**, 7547-7569, doi:10.1002/2016jb013007 (2016).
- 21 Tapley, B. D., Bettadpur, S., Watkins, M. & Reigber, C. The gravity recovery and climate experiment: Mission overview and early results. *Geophysical Research Letters* **31**, doi:10.1029/2004gl019920 (2004).
- 22 Richey, A. S. *et al.* Quantifying renewable groundwater stress with GRACE. *Water Resources Research* **51**, 5217-5238, doi:10.1002/2015wr017349 (2015).
- 23 Shamsudduha, M. & Taylor, R. G. Groundwater storage dynamics in the world's large aquifer systems from GRACE: uncertainty and role of extreme precipitation. *Earth System Dynamics* **11**, 755-774, doi:10.5194/esd-11-755-2020 (2020).
- 24 Vishwakarma, B. D., Bates, P., Sneeuw, N., Westaway, R. M. & Bamber, J. L. Re-assessing global water storage trends from GRACE time series. *Environmental Research Letters* (2020).
- 25 Pekel, J. F., Cottam, A., Gorelick, N. & Belward, A. S. High-resolution mapping of global surface water and its long-term changes. *Nature* **540**, 418-436, doi:10.1038/nature20584 (2016).
- 26 Lehner, B. *et al.* High-resolution mapping of the world's reservoirs and dams for sustainable river-flow management. *Frontiers in Ecology and the Environment* **9**, 494-502, doi:10.1890/100125 (2011).
- 27 Scanlon, B. R. *et al.* Global models underestimate large decadal declining and rising water storage trends relative to GRACE satellite data. *Proc. National Academy of Sciences (USA)* **115**, E1080-E1089, doi:10.1073/pnas.1704665115 (2018).
- 28 Konikow, L. F. Overestimated water storage. *Nature Geoscience* **6**, 2-2, doi:10.1038/ngeo1659 (2013).
- 29 Konikow, L. F. Contribution of global groundwater depletion since 1900 to sea-level rise. *Geophysical Research Letters* **38**, doi:10.1029/2011gl048604 (2011).
- 30 Pokhrel, Y. N. *et al.* Model estimates of sea-level change due to anthropogenic impacts on terrestrial water storage. *Nature Geoscience* **5**, 389-392, doi:10.1038/ngeo1476 (2012).
- 31 de Graaf, I. E. M. *et al.* A global-scale two-layer transient groundwater model: Development and application to groundwater depletion. *Advances in Water Resources* **102**, 53-67, doi:10.1016/j.advwatres.2017.01.011 (2017).
- 32 Rateb, A. *et al.* Comparison of Groundwater Storage Changes from GRACE Satellites with Monitoring and Modeling of Major U.S. Aquifers. *Water Resour. Res.* **56**, doi: <https://doi.org/10.1029/2020WR027556> (2020).
- 33 de Graaf, I. E. M., Gleeson, T., van Beek, L. P. H., Sutanudjaja, E. H. & Bierkens, M. F. P. Environmental flow limits to global groundwater pumping. *Nature* **574**, 90-94, doi:10.1038/s41586-019-1594-4 (2019).
- 34 Sophocleous, M. From safe yield to sustainable development of water resources - the Kansas experience. *J. Hydrol.* **235**, 27-43 (2000).

- 35 Konikow, L. F. & Bredehoeft, J. D. Groundwater Resource Development: Effects and Sustainability. *The Groundwater Project*, 96 p. (2020).
- 36 MacAllister, D. J., Krishan, G., Basharat, M., Cuba, D. & MacDonald, A. M. A century of groundwater accumulation in Pakistan and northwest India. *Nature Geoscience*, doi:10.1038/s41561-022-00926-1 (2022).
- 37 Scanlon, B. R. *et al.* Effects of climate and irrigation on GRACE-based estimates of water storage changes in major US aquifers. *Environmental Research Letters* **16**, doi:10.1088/1748-9326/ac16ff (2021).
- 38 McGuire, V. L. Water-level and recoverable water in storage changes, High Plains aquifer, predevelopment to 2015 and 2013–15: U.S. Geological Survey Scientific Investigations Report 2017–5040, 14 p., <https://doi.org/10.3133/sir20175040>. (2017).
- 39 Faunt, C. C. Groundwater availability of the Central Valley Aquifer, California; US Geological Survey Prof. Paper 1766, 173 p. (2009).
- 40 Vorosmarty, C. J., Green, P., Salisbury, J. & Lammers, R. B. Global water resources: Vulnerability from climate change and population growth. *Science* **289**, 284-288 (2000).
- 41 Mekonnen, M. M. & Hoekstra, A. Y. Four billion people facing severe water scarcity. *Science Advances* **2**, doi:10.1126/sciadv.1500323 (2016).
- 42 Vorosmarty, C. J. & Sahagian, D. Anthropogenic disturbance of the terrestrial water cycle. *Bioscience* **50**, 753-765 (2000).
- 43 MacDonald, A. M. *et al.* Mapping groundwater recharge in Africa from ground observations and implications for water security. *Environmental Research Letters* **16**, doi:10.1088/1748-9326/abd661 (2021).
- 44 Gronwall, J. & Danert, K. Regarding Groundwater and Drinking Water Access through A Human Rights Lens: Self-Supply as A Norm. *Water* **12**, doi:10.3390/w12020419 (2020).
- 45 van Vliet, M. T. H. *et al.* Global water scarcity including surface water quality and expansions of clean water technologies. *Environmental Research Letters* **16**, doi:10.1088/1748-9326/abbfc3 (2021).
- 46 Podgorski, J. & Berg, M. Global threat of arsenic in groundwater. *Science* **368**, 845-850, doi:10.1126/science.aba1510 (2020).
- 47 Yapiyev, V., Sagintayev, Z., Inglezakis, V. J., Samarkhanov, K. & Verhoef, A. Essentials of Endorheic Basins and Lakes: A Review in the Context of Current and Future Water Resource Management and Mitigation Activities in Central Asia. *Water* **9**, doi:10.3390/w9100798 (2017).
- 48 Pauloo, R. A., Fogg, G. E., Guo, Z. L. & Harter, T. Anthropogenic basin closure and groundwater salinization (ABCSAL). *Journal of Hydrology* **593**, doi:10.1016/j.jhydrol.2020.125787 (2021).
- 49 Cao, T. Z., Han, D. M. & Song, X. F. Past, present, and future of global seawater intrusion research: A bibliometric analysis. *Journal of Hydrology* **603**, doi:10.1016/j.jhydrol.2021.126844 (2021).
- 50 Werner, A. D. *et al.* Seawater intrusion processes, investigation and management: Recent advances and future challenges. *Advances in Water Resources* **51**, 3-26, doi:10.1016/j.advwatres.2012.03.004 (2013).
- 51 Scanlon, B. R. *et al.* Linkages between GRACE water storage, hydrologic extremes, and climate teleconnections in major African aquifers. *Environmental Research Letters* **17**, doi:10.1088/1748-9326/ac3bfc (2022).
- 52 Held, I. M. & Soden, B. J. Robust Responses of the Hydrological Cycle to Global Warming. *Journal of Climate* **19**, 5686-5699, doi:10.1175/jcli3990.1 (2006).
- 53 Fan, X., Duan, Q. Y., Shen, C. P., Wu, Y. & Xing, C. Global surface air temperatures in CMIP6: historical performance and future changes. *Environmental Research Letters* **15**, 104056, doi:10.1088/1748-9326/abb051 (2020).

- 54 Tabari, H. Climate change impact on flood and extreme precipitation increases with water availability. *Scientific Reports* **10**, doi:10.1038/s41598-020-70816-2 (2020).
- 55 Williams, A. P. *et al.* Large contribution from anthropogenic warming to an emerging North American megadrought. *Science* **368**, 314-+, doi:10.1126/science.aaz9600 (2020).
- 56 Arias, P. A., N. Bellouin, E. Coppola, R.G. Jones, G. Krinner, J. Marotzke, V. Naik, M.D. Palmer, G.-K. Plattner, J. Rogelj, *et al.* Technical Summary. In *Climate Change 2021: The Physical Science Basis. Contribution of Working Group I to the Sixth Assessment Report of the Intergovernmental Panel on Climate Change* [Masson-Delmotte, V., P. Zhai, A. Pirani, S.L. Connors, C. Péan, S. Berger, N. Caud, Y. Chen, L. Goldfarb, M.I. Gomis, M. Huang, K. Leitzell, E. Lonnoy, J.B.R. Matthews, T.K. Maycock, T. Waterfield, O. Yelekçi, R. Yu, and B. Zhou (eds.)]. Cambridge University Press, Cambridge, United Kingdom and New York, NY, USA, pp. 33–144. doi:doi:10.1017/9781009157896.002 (2021).
- 57 van Dijk, A. *et al.* The Millennium Drought in southeast Australia (2001-2009): Natural and human causes and implications for water resources, ecosystems, economy, and society. *Water Resources Research* **49**, 1040-1057, doi:10.1002/wrcr.20123 (2013).
- 58 Scanlon, B. R. *et al.* Hydrologic implications of GRACE satellite data in the Colorado River Basin. *Water Resources Research* **51**, 9891-9903, doi:10.1002/2015wr018090 (2015).
- 59 Rateb, A., Scanlon, B. R. & Kuo, C. Y. Multi-decadal assessment of water budget and hydrological extremes in the Tigris-Euphrates Basin using satellites, modeling, and in-situ data. *Science of the Total Environment* **766**, doi:10.1016/j.scitotenv.2020.144337 (2021).
- 60 Anyamba, A., Glennie, E. & Small, J. Teleconnections and Interannual Transitions as Observed in African Vegetation: 2015-2017. *Remote Sensing* **10**, doi:10.3390/rs10071038 (2018).
- 61 Ul Hassan, W. & Nayak, M. A. Global teleconnections in droughts caused by oceanic and atmospheric circulation patterns. *Environmental Research Letters* **16**, doi:10.1088/1748-9326/abc9e2 (2021).
- 62 Shen, Z. X. *et al.* Drying in the low-latitude Atlantic Ocean contributed to terrestrial water storage depletion across Eurasia. *Nature Communications* **13**, 1849, doi:10.1038/s41467-022-29544-6 (2022).
- 63 Dettinger, M. D. Atmospheric Rivers as Drought Busters on the US West Coast. *Journal of Hydrometeorology* **14**, 1721-1732, doi:10.1175/jhm-d-13-02.1 (2013).
- 64 Taylor, R. G. *et al.* Ground water and climate change. *Nature Climate Change* **3**, 322-329, doi:10.1038/nclimate1744 (2013).
- 65 Cuthbert, M. O. *et al.* Observed controls on resilience of groundwater to climate variability in sub-Saharan Africa. *Nature* **572**, 230-+, doi:10.1038/s41586-019-1441-7 (2019).
- 66 Hugonnet, R. *et al.* Accelerated global glacier mass loss in the early twenty-first century. *Nature* **592**, 726-+, doi:10.1038/s41586-021-03436-z (2021).
- 67 Zhao, F., Long, D., Li, X., Huang, Q. & Han, P. Rapid glacier mass loss in the Southeastern Tibetan Plateau since the year 2000 from satellite observations. *Remote Sensing of Environment* **270**, 112853, doi:<https://doi.org/10.1016/j.rse.2021.112853> (2022).
- 68 Li, X. Y. *et al.* Climate change threatens terrestrial water storage over the Tibetan Plateau. *Nature Climate Change*, doi:10.1038/s41558-022-01443-0 (2022).
- 69 Yao, T. D. *et al.* The imbalance of the Asian water tower. *Nature Reviews Earth & Environment*, doi:10.1038/s43017-022-00299-4 (2022).
- 70 Immerzeel, W. W., van Beek, L. P. H. & Bierkens, M. F. P. Climate Change Will Affect the Asian Water Towers. *Science* **328**, 1382-1385, doi:10.1126/science.1183188 (2010).
- 71 Immerzeel, W. W. *et al.* Importance and vulnerability of the world's water towers. *Nature* **577**, 364-+, doi:10.1038/s41586-019-1822-y (2020).

- 72 Dery, S. J. *et al.* Detection of runoff timing changes in pluvial, nival, and glacial rivers of western Canada. *Water Resources Research* **45**, doi:10.1029/2008wr006975 (2009).
- 73 Siebert, S. *et al.* Groundwater use for irrigation - a global inventory. *Hydrol Earth Syst. Sci.* **7**, 3977-4021, doi:10.5194/hessd-3977-3977-2010 (2010).
- 74 Scanlon, B. R. *et al.* Groundwater depletion and sustainability of irrigation in the US High Plains and Central Valley. *Proc. of Natl. Acad. of Sciences* **109**, 9320-9325, doi:10.1073/pnas.1200311109 (2012).
- 75 Dahlke, H. E. *et al.* in *Advanced Tools for Integrated Water Resources Management* Vol. 3 *Advances in Chemical Pollution Environmental Management and Protection* (eds J. Friesen & L. RodriguezSinobas) 215-275 (2018).
- 76 Reddy, V. R., Pavelic, P. & Hanjra, M. A. Underground taming of floods for irrigation (UTFI) in the river basins of South Asia: institutionalising approaches and policies for sustainable water management and livelihood enhancement. *Water Policy* **20**, 369-387, doi:10.2166/wp.2017.150 (2018).
- 77 McDonald, R. I., Weber, K. F., Padowski, J., Boucher, T. & Shemie, D. Estimating watershed degradation over the last century and its impact on water-treatment costs for the world's large cities. *Proceedings of the National Academy of Sciences of the United States of America* **113**, 9117-9122, doi:10.1073/pnas.1605354113 (2016).
- 78 UNEP, F. a. The State of the World's Forests 2020. Forests, Biodiversity, and People. *Food and Agricultural Organization and United Nations Environmental Program, Rome*, <https://doi.org/10.4060/ca8642en>. (2020).
- 79 Wetlands, C. o. Global Wetland Outlook: Special Edition 2021, Gland, Switzerland: Secretariat of the Convention on Wetlands. (2021).
- 80 Scanlon, B. R., Jolly, I., Sophocleous, M. & Zhang, L. Global impacts of conversions from natural to agricultural ecosystems on water resources: Quantity versus quality. *Water Resources Res.* **43**, Art. No. W03437 (2007).
- 81 Nosetto, M. D., Paez, R. A., Ballesteros, S. I. & Jobbagy, E. G. Higher water-table levels and flooding risk under grain vs. livestock production systems in the **subhumid plains of the Pampas**. *Agriculture Ecosystems & Environment* **206**, 60-70, doi:10.1016/j.agee.2015.03.009 (2015).
- 82 Favreau, G. *et al.* Land clearing, climate variability, and water resources increase in semiarid southwest Niger: A review. *Water Resources Research*, *45*, W00A16, 10.1029/2007WR006785, doi:W00a16 10.1029/2007wr006785 (2009).
- 83 Walker, C. D., Zhang, I., Ellis, T. W., Hatton, T. J. & Petheram, C. Estimating impacts of changed land use on recharge: review of modelling and other approaches appropriate for management of dryland salinity. *Hydrogeol. J.* **10**, 68-90 (2002).
- 84 Nosetto, M. D., Jobbagy, E. G., Jackson, R. B. & Sznaider, G. A. Reciprocal influence of crops and shallow ground water in sandy landscapes of the Inland Pampas. *Field Crops Research* **113**, 138-148, doi:10.1016/j.fcr.2009.04.016 (2009).
- 85 Gimenez, R., Mercu, J., Nosetto, M., Paez, R. & Jobbagy, E. The ecohydrological imprint of deforestation in the semiarid Chaco: insights from the last forest remnants of a highly cultivated landscape. *Hydrological Processes* **30**, 2603-2616, doi:10.1002/hyp.10901 (2016).
- 86 Eilers, R. G., Eilers, W. D. & Fitzgerald, M. M. A salinity risk Index for soils of the Canadian Prairies. *Hydrogeology Journal* **5**, 68-79, doi:10.1007/s100400050118 (1997).
- 87 WHO/UNICEF. Progress on household drinking water, sanitation and hygiene 2000-2020: Five years into the SDGs. *World Health Organization (WHO) and the United Nations Children's Fund (UNICEF), Geneva*, 164 p. (2021).
- 88 Cobbing, J. & Hiller, B. Waking a sleeping giant: Realizing the potential of groundwater in Sub-Saharan Africa. *World Development* **122**, 597-613, doi:10.1016/j.worlddev.2019.06.024 (2019).



- 89 Rockström, J. & Falkenmark, M. Agriculture: Increase water harvesting in Africa. *Nature* **519**, 283-285, doi:10.1038/519283a (2015).
- 90 MacAllister, D. J., MacDonald, A. M., Kebede, S., Godfrey, S. & Calow, R. Comparative performance of rural water supplies during drought. *Nature Communications* **11**, 1099, doi:10.1038/s41467-020-14839-3 (2020).
- 91 Aboah, M. & Miyittah, M. K. Estimating global water, sanitation, and hygiene levels and related risks on human health, using global indicators data from 1990 to 2020. *Journal of Water and Health* **20**, 1091-1101, doi:10.2166/wh.2022.065 (2022).
- 92 Abell, R. *et al.* Beyond the Source: The Environmental, Economic and Community Benefits of Source Water Protection. *The Nature Conservancy, Arlington, VA, USA.* (2017).
- 93 Herrera-Garcia, G. *et al.* Mapping the global threat of land subsidence. *Science* **371**, 34-36, doi:10.1126/science.abb8549 (2021).
- 94 Scanlon, B. R., Reedy, R. C., Faunt, C. C., Pool, D. & Uhlman, K. Can We Mitigate Climate Extremes using Managed Aquifer Recharge: Case Studies California Central Valley and South-Central Arizona, USA *AGU Fall Meeting Abstract H12G-02, Invited.* (2015).
- 95 Qadir, M. *et al.* Global and regional potential of wastewater as a water, nutrient and energy source. *Natural Resources Forum* **44**, 40-51, doi:10.1111/1477-8947.12187 (2020).
- 96 i-WSSM, U. a. U. Water Reuse within a Circular Economy Context, Series II. Global Water Security Issues (GWSI) Series - No. 2, UNESCO Publishing, Paris. . (2020).
- 97 Jones, E. R., van Vliet, M. T. H., Qadir, M. & Bierkens, M. F. P. Country-level and gridded estimates of wastewater production, collection, treatment and reuse. *Earth Syst. Sci. Data* **13**, 237-254, doi:10.5194/essd-13-237-2021 (2021).
- 98 Jeuland, M. Challenges to wastewater reuse in the Middle East and North Africa. *Middle East Development Journal* **7**, 1-25, doi:10.1080/17938120.2015.1019293 (2015).
- 99 Zhang, Y. & Shen, Y. Wastewater irrigation: past, present, and future. *WIREs Water* **6**, e1234, doi:<https://doi.org/10.1002/wat2.1234> (2019).
- 100 Fito, J. & Van Hulle, S. W. H. Wastewater reclamation and reuse potentials in agriculture: towards environmental sustainability. *Environment Development and Sustainability* **23**, 2949-2972, doi:10.1007/s10668-020-00732-y (2021).
- 101 Gao, L., Yoshikawa, S., Iseri, Y., Fujimori, S. & Kanae, S. An Economic Assessment of the Global Potential for Seawater Desalination to 2050. *Water* **9**, doi:10.3390/w9100763 (2017).
- 102 Ahdab, Y. D., Thiel, G. P., Bohlke, J. K., Stanton, J. & Lienhard, J. H. Minimum energy requirements for desalination of brackish groundwater in the United States with comparison to international datasets. *Water Research* **141**, 387-404, doi:10.1016/j.watres.2018.04.015 (2018).
- 103 Jones, E., Qadir, M., van Vliet, M. T. H., Smakhtin, V. & Kang, S. M. The state of desalination and brine production: A global outlook. *Science of the Total Environment* **657**, 1343-1356, doi:10.1016/j.scitotenv.2018.12.076 (2019).
- 104 Lin, S. S. *et al.* Seawater desalination technology and engineering in China: A review. *Desalination* **498**, doi:10.1016/j.desal.2020.114728 (2021).
- 105 Martinez-Alvarez, V., Martin-Gorriz, B. & Soto-Garcia, M. Seawater desalination for crop irrigation - A review of current experiences and revealed key issues. *Desalination* **381**, 58-70, doi:10.1016/j.desal.2015.11.032 (2016).
- 106 Smith, K., Liu, S. M., Hu, H. Y., Dong, X. & Wen, X. H. Water and energy recovery: The future of wastewater in China. *Science of the Total Environment* **637**, 1466-1470, doi:10.1016/j.scitotenv.2018.05.124 (2018).
- 107 Pulido-Bosch, A. *et al.* Impacts of agricultural irrigation on groundwater salinity. *Environmental Earth Sciences* **77**, doi:10.1007/s12665-018-7386-6 (2018).



- 108 Kurnik, J. The Next California: Phase 1: Investigating Potential in the mid-Mississippi Delat River region. *The Markets Institute at World Wildlife Fund, Innovation Analysis*, 15 p., <https://www.worldwildlife.org/publications/the-next-california-phase-1-investigating-potential-in-the-mid-mississippi-delta-river-region>. (2020).
- 109 Senay, G. B., Schauer, M., Friedrichs, M., Velpuri, N. M. & Singh, R. K. Satellite-based water use dynamics using historical Landsat data (1984-2014) in the southwestern United States. *Remote Sensing of Environment* **202**, 98-112, doi:10.1016/j.rse.2017.05.005 (2017).
- 110 Gebremichael, M., Krishnamurthy, P. K., Ghebremichael, L. T. & Alam, S. What Drives Crop Land Use Change during Multi-Year Droughts in California's Central Valley? Prices or Concern for Water? *Remote Sensing* **13**, doi:10.3390/rs13040650 (2021).
- 111 Brauman, K. A., Siebert, S. & Foley, J. A. Improvements in crop water productivity increase water sustainability and food security—a global analysis. *Env. Res. Letters*, **8**, 024030 7 p. (2013).
- 112 Mekonnen, M. M., Hoekstra, A. Y., Neale, C. M. U., Ray, C. & Yang, H. S. Water productivity benchmarks: The case of maize and soybean in Nebraska. *Agricultural Water Management* **234**, doi:10.1016/j.agwat.2020.106122 (2020).
- 113 Colaizzi, P. D., Gowda, P. H., Marek, T. H. & Porter, D. O. Irrigation in the Texas High Plains: A brief history and potential reductions in demand. *Irrig. and Drain.* **57** (2008).
- 114 Scanlon, B. R., Gates, J. B., Reedy, R. C., Jackson, A. & Bordovsky, J. Effects of irrigated agroecosystems: (2). Quality of soil water and groundwater in the Southern High Plains, Texas. *Water Resour. Res.* , **46**, W09538, doi:10.1029/2009WR008428 (2010).
- 115 Ward, F. A. & Pulido-Velazquez, M. Water conservation in irrigation can increase water use. *Proc. Natl. Acad. Sci. USA* **105**, 18215-18220, doi:10.1073/pnas.0805554105 (2008).
- 116 Grafton, R. Q. *et al.* The paradox of irrigation efficiency. *Science* **361**, 748-750, doi:10.1126/science.aat9314 (2018).
- 117 Alcott, B. Historical overive of the Jeovons paradox in the literature. in J.M. Polimeni, K. Mayumi, and M Giampetro (eds). *The Jevons Paraxod and the Mythi of Resoruce Efficiency Improvements. Earthscan*, p. 7 - 78, ISBN 978-1-84407-462-4 (2008).
- 118 MacAllister, D. J., Krishan, G., Basharat, M., Cuba, D. & MacDonald, A. M. A century of groundwater accumulation in Pakistan and northwest India (2022).
- 119 Aarnoudse, E. & Bluemling, B. Controlling groundwater through smart card machines: The case of water quotas and pricing mechanisms in Gansu Province, China. Colombo, Sri Lanka: International Water Management Institute (IWMI). 18 p. Groundwater Solutions Initiative for Policy and Practice (GRIPP) Case Profile Series 02. ISSN 2520-2391 (Print). DOI: 10.5337/2016.224. . (2017).
- 120 Kinzelbach, W., Wang, H., Li, Y., Wang, L. & Li, N. Groundwater Overexploitation in the North China Plain: A Path to Sustainability. *Springer Water, Open Access*, 157 p. , doi:<https://doi.org/10.1007/978-981-16-5843-3> (2021).
- 121 McDougall, R., Kristiansen, P. & Rader, R. Small-scale urban agriculture results in high yields but requires judicious management of inputs to achieve sustainability. *Proceedings of the National Academy of Sciences* **116**, 129-134, doi:10.1073/pnas.1809707115 (2019).
- 122 Langemeyer, J., Madrid-Lopez, C., Mendoza Beltran, A. & Villalba Mendez, G. Urban agriculture — A necessary pathway towards urban resilience and global sustainability? *Landscape and Urban Planning* **210**, 104055, doi:<https://doi.org/10.1016/j.landurbplan.2021.104055> (2021).
- 123 Palmer, L. Urban agriculture growth in US cities. *Nature Sustainability* **1**, 5-7, doi:10.1038/s41893-017-0014-8 (2018).
- 124 Grafius, D. R. *et al.* Estimating food production in an urban landscape. *Scientific Reports* **10**, 5141, doi:10.1038/s41598-020-62126-4 (2020).

- 125 FAO. The State of Food Insecurity in the World 2015. *Food and Agricultural Organization, Intl. Food for Agric. Development, World Food Program*, 57 p. (2015).
- 126 Kumm, M. *et al.* Lost food, wasted resources: Global food supply chain losses and their impacts on freshwater, cropland, and fertiliser use. *Science of the Total Environment* **438**, 477-489, doi:10.1016/j.scitotenv.2012.08.092 (2012).
- 127 Gleick, P. H. Global freshwater resources: soft-path solutions for the 21st century. *Science* **302**, 1524-1528 (2003).
- 128 Miralles-Wilhelm, F. Nature-based solutions in agriculture- Sustainable management and conservation of land, water, and biodiversity. Virginia. FAO and The Nature Conservancy. *Food and Agricultural Organization and The Nature Conservancy*, 67 p., <https://doi.org/10.4060/cb3140en>, doi:<https://doi.org/10.4060/cb3140en> (2021).
- 129 McDonald, R. I. & Shemie, D. Urban Water Blueprint: Mapping Conservation Solutions to the Global Water Challenge. *The Nature Conservancy, Washington, D.C., USA.*; <http://water.nature.org/waterblueprint> (2014).
- 130 Kane, M. & Erickson, J. D. Urban metabolism and payment for ecosystem services: History and policy analysis of the New York city water supply. *Advances in the Economics of Environmental Resources*, **7**, 307-328. (2007).
- 131 Conservancy, T. N. Greater Cape Town Water Fund: Business Case: Assessing the Return on Investment for Ecological Infrastructure Restoration. *The Nature Conservancy, Nature.org/Cape-Town-Water*, 55 p. (2019).
- 132 Hu, J., Lu, Y. H., Fu, B. J., Comber, A. J. & Harris, P. Quantifying the effect of ecological restoration on runoff and sediment yields: A meta-analysis for the Loess Plateau of China. *Progress in Physical Geography-Earth and Environment* **41**, 753-774, doi:10.1177/0309133317738710 (2017).
- 133 Liu, W. W. *et al.* Improving wetland ecosystem health in China. *Ecological Indicators* **113**, doi:10.1016/j.ecolind.2020.106184 (2020).
- 134 Group, C. C. C. L. Cities100: Chennai is restoring waterbodies to protect against flooding and drought. *C40 Knowledge Hub: Nordic Sustainability, South and West Asia, Chennai, Case Studies and Best Practice Examples*: [https://www.c40knowledgehub.org/s/article/Cities100-Chennai-is-restoring-waterbodies-to-protect-against-flooding-and-drought?language=en\\_US](https://www.c40knowledgehub.org/s/article/Cities100-Chennai-is-restoring-waterbodies-to-protect-against-flooding-and-drought?language=en_US) (2019).
- 135 Chung, M. G., Frank, K. A., Pokhrel, Y., Dietz, T. & Liu, J. G. Natural infrastructure in sustaining global urban freshwater ecosystem services. *Nature Sustainability* **4**, 1068-+, doi:10.1038/s41893-021-00786-4 (2021).
- 136 Qi, Y. F. *et al.* Addressing Challenges of Urban Water Management in Chinese Sponge Cities via Nature-Based Solutions. *Water* **12**, doi:10.3390/w12102788 (2020).
- 137 Acreman, M. *et al.* Evidence for the effectiveness of nature-based solutions to water issues in Africa. *Environmental Research Letters* **16**, doi:10.1088/1748-9326/ac0210 (2021).
- 138 Livneh, B. & Badger, A. M. Drought less predictable under declining future snowpack. *Nature Climate Change* **10**, 452-458, doi:10.1038/s41558-020-0754-8 (2020).
- 139 Mulligan, M., van Soesbergen, A. & Sáenz, L. GOODD, a global dataset of more than 38,000 georeferenced dams. *Scientific Data* **7**, 31, doi:10.1038/s41597-020-0362-5 (2020).
- 140 ICOLD. International Commission on Large Dams, <https://www.icold-cigb.org/>. (2022).
- 141 Yang, G., Guo, S., Liu, P. & Block, P. Integration and Evaluation of Forecast-Informed Multiobjective Reservoir Operations. *Journal of Water Resources Planning and Management* **146**, 04020038, doi:doi:10.1061/(ASCE)WR.1943-5452.0001229 (2020).
- 142 Delaney, C. J. *et al.* Forecast Informed Reservoir Operations Using Ensemble Streamflow Predictions for a Multipurpose Reservoir in Northern California. *Water Resources Research* **56**, doi:10.1029/2019wr026604 (2020).

- 143 Amarasinghe, U. A., Muthuwatta, L., Surinaidu, L., Anand, S. & Jain, S. K. Reviving the Ganges Water Machine: potential. *Hydrol. Earth Syst. Sci.* **20**, 1085-1101, doi:10.5194/hess-20-1085-2016 (2016).
- 144 Shamsudduha, M. *et al.* The Bengal Water Machine: Quantified freshwater capture in Bangladesh. *Science* **377**, 1315-1319, doi:doi:10.1126/science.abm4730 (2022).
- 145 Chao, B. F., Wu, Y. H. & Li, Y. S. Impact of artificial reservoir water impoundment on global sea level. *Science* **320**, 212-214, doi:10.1126/science.1154580 (2008).
- 146 Zarfl, C., Lumsdon, A. E., Berlekamp, J., Tydecks, L. & Tockner, K. A global boom in hydropower dam construction. *Aquatic Sciences* **77**, 161-170, doi:10.1007/s00027-014-0377-0 (2015).
- 147 Zarfl, C. *et al.* Future large hydropower dams impact global freshwater megafauna. *Scientific Reports* **9**, doi:10.1038/s41598-019-54980-8 (2019).
- 148 Wheeler, K. G., Jeuland, M., Hall, J. W., Zagona, E. & Whittington, D. Understanding and managing new risks on the Nile with the Grand Ethiopian Renaissance Dam. *Nature Communications* **11**, doi:10.1038/s41467-020-19089-x (2020).
- 149 Di Baldassarre, G. *et al.* Water shortages worsened by reservoir effects. *Nature Sustainability* **1**, 617-622, doi:10.1038/s41893-018-0159-0 (2018).
- 150 Dahlke, H. E., Brown, A. G., Orloff, S., Putnam, D. & O'Geen, T. Managed winter flooding of alfalfa recharges groundwater with minimal crop damage. *California Agriculture* **72**, 65-75, doi:10.3733/ca.2018a0001 (2018).
- 151 Yang, Q. & Scanlon, B. R. How much water can be captured from flood flows to store in depleted aquifers for mitigating floods and droughts? A case study from Texas, US. *Environmental Research Letters* **14**, 054011, doi:<https://iopscience.iop.org/article/10.1088/1748-9326/ab148e> (2019).
- 152 Dillon, P., Stuyfzand, P., Grischek, T., Lluria, M., Pyne, R.D.G., Jain, R.C., Bear, J., Schwarz, J., Wang, W., Fernandez, E., Stefan, C., Pettenati, M., van der Gun, J., Sprenger, C., Massmann, G., Scanlon, B.R., Xanke, J., Jokela, P., Zheng, Y., Rossetto, R., Shamruk, M., Pavelic, P., Murray, E., Ross, A., Bonilla Valverde, J.P., Palma Nava, A., Ansems, N., Posavec, K., Ha, K., Martin, R. and Sapiano, M. . Sixty Years of Global Progress in Managed Aquifer Recharge. *Hydrogeology Journal* <https://doi.org/10.1007/s10040-018-1841-z> . (2018).
- 153 District, O. C. W. Groundwater Replenishment System Technical Brochure, 28 p., <https://www.ocwd.com/media/10443/gwrs-technical-brochure-2021.pdf>. (2021).
- 154 Konikow, L. F. Groundwater Depletion in the United States (1900 - 2008). U.S. Geol. Surv. Scientific Investigation Report 2013-5079, 63 p. . (2013).
- 155 Hartog, N. & Stuyfzand, P. J. Water quality considerations on the rise as the use of managed Aquifer recharge systems widens. *Water* **9**, 808 (2017).
- 156 Shumilova, O., Tockner, K., Thieme, M., Koska, A. & Zarfl, C. Global Water Transfer Megaprojects: A Potential Solution for the Water-Food-Energy Nexus? *Frontiers in Environmental Science* **6**, doi:10.3389/fenvs.2018.00150 (2018).
- 157 Long, D. *et al.* South-to-North Water Diversion stabilizing Beijing's groundwater levels. *Nature Communications* **11**, doi:10.1038/s41467-020-17428-6 (2020).
- 158 Zhuang, W. Eco-environmental impact of inter-basin water transfer projects: a review. *Environmental Science and Pollution Research* **23**, 12867-12879, doi:10.1007/s11356-016-6854-3 (2016).
- 159 Hoekstra, A. Y. *Virtual water trade: Proceedings of the International Expert Meeting on Virtual Water Trade*. (UNESCO-IHE, Delft, The Netherlands, 2003).
- 160 Oki, T. & Kanae, S. Virtual water trade and world water resources. *Water Science and Technology* **49**, 203-209 (2004).

- 161 Dolan, F. *et al.* Evaluating the economic impact of water scarcity in a changing world. *Nature Communications* **12**, doi:10.1038/s41467-021-22194-0 (2021).
- 162 Hoekstra, A. Y. & Mekonnen, M. M. The water footprint of humanity. *PNAS* **109**, 3232-3237 (2012).
- 163 Dalin, C., Wada, Y., Kastner, T. & Puma, M. J. Groundwater depletion embedded in international food trade. *Nature* **543**, 700-704, doi:10.1038/nature21403  
<http://www.nature.com/nature/journal/v543/n7647/abs/nature21403.html#supplementary-information> (2017).
- 164 Hanasaki, N., Inuzuka, T., Kanae, S. & Oki, T. An estimation of global virtual water flow and sources of water withdrawal for major crops and livestock products using a global hydrological model. *Journal of Hydrology* **384**, 232-244, doi:10.1016/j.jhydrol.2009.09.028 (2010).
- 165 Mekonnen, M. M. & Gerbens-Leenes, W. The Water Footprint of Global Food Production. *Water* **12**, doi:10.3390/w12102696 (2020).
- 166 Grafton, R. Q. & Wheeler, S. A. in *Annual Review of Resource Economics, Vol 10* Vol. 10 *Annual Review of Resource Economics* (eds G. C. Rausser & D. Zilberman) 487-510 (2018).
- 167 Moench, M. Water and the potential for social instability: Livelihoods, migration and the building of society. *Natural Resources Forum*, **26**, 195-204, doi: <https://doi.org/10.1111/0165-0203.00021> (2002).
- 168 Commission, N. W. Water markets in Australia: a short history. *National Water Commission*, 139 p. (2011).
- 169 Kundzewicz, Z. W. & Döll, P. Will groundwater ease freshwater stress under climate change? *Hydrological Sciences Journal-Journal Des Sciences Hydrologiques* **54**, 665-675 (2009).
- 170 UNEP. A Snapshot of the World's Water Quality: Towards a global assessment. *Nations Environment Programme, Nairobi, Kenya*, 162 pp. (2016).
- 171 UN-Water. Summary Progress Update 2021 - SDG 6 - water and sanitation for all. *United Nations, Geneva, Switzerland*, 53 p. (2021).
- 172 Program, U. N. E. UNEP, GEMStat: Global Environmental Monitoring System; <https://gemstat.org/>, accessed May 2022. (2022).
- 173 Akhmouch, A. & Correia, F. N. The 12 OECD principles on water governance - When science meets policy. *Utilities Policy* **43**, 14-20, doi:10.1016/j.jup.2016.06.004 (2016).
- 174 Lankford, B., Bakker, K., Zeitoun, M. & Conway, B. D. *Water Security: Principles, Perspectives, and Practices*. (2013).
- 175 Potapov, P. *et al.* Global maps of cropland extent and change show accelerated cropland expansion in the twenty-first century. *Nature Food* **3**, 19-+, doi:10.1038/s43016-021-00429-z (2022).
- 176 Fan, Y., Li, H. & Miguez-Macho, G. Global patterns of groundwater table depth. *Science* **339**, 940-943, doi:10.1126/science.1229881 (2013).

## Small print items

### **Acknowledgements**

The authors thank xxxxx

### **Author contributions**

Scanlon conceptualized the review and coordinated input. Fakhreddine reviewed many of the topics and developed some of the figures. Rateb analyzed GRACE satellite data and Shamsudduha reviewed this output. Grafton provided input on water economics. Jobbagy reviewed land use change impacts. Kolussu provided data on future precipitation changes. Konikow provided detailed information on surface water/groundwater interactions. Mekonnen provided data on water trade. Vorosmarty provided input on green and gray solutions. All authors reviewed the paper and provided edits.

### **Competing interests**

The authors declare no competing interests.

### **Peer review information**

*Nature Reviews Earth & Environment* thanks [Referee#1 name], [Referee#2 name], who co-reviewed with [ECR review] and the other, anonymous, reviewer(s) for their contribution to the peer review of this work.

### **Publisher's note**

Springer Nature remains neutral with regard to jurisdictional claims in published maps and institutional affiliations.

### **Supplementary information**

Supplementary information is available for this paper at <https://doi.org/10.1038/s415XX-XXX-XXXX-X>

**Table 1. Water storage trends for major basins and aquifers**

Basin ID, B (river basin), A (aquifer), area, Total Water Storage trend based on JPL and CSR mascons solutions (2002 – 2022), Trend to Interannual Variability Ratio (TIVR),  $R^2$  of TWS trend, and relationship between precipitation and long-term variability in TWS with a 2-month lag. Additional data are provided in Supplementary Information, Section 1. More detailed information is provided in Supplementary Table 3. Analysis for Iran is conducted at a country scale.

ID	B/A	Name	Area (km <sup>2</sup> )	TWS trend (mm/yr)	TWS trend (km <sup>3</sup> /19 yr)	TIVR	R <sup>2</sup> TWS trend	P .vs TWS
1	B	Hai	163,076	-19.3	-60.9	-13.83	0.94	0.26
2	A	N. China Plain	437,748	-11.5	-97.1	-7.6	0.82	0.30
3	A	Ganges-Brahmaputra	634,565	-18.9	-231.5	-7.53	0.84	0.79
4	B	Sao Francisco	613,748	-18.7	-221.9	-4.97	0.67	0.60
5	A	Central Valley	59,425	-12.1	-13.9	-3.08	0.45	0.61
6	B	N. Caucasus	295,468	-10.6	-60.4	-4.86	0.64	-0.02
7	B	Dnieper	513,997	-9.6	-95.0	-6.09	0.76	-0.27
8	B	Don	424,826	-9.2	-75.6	-4.37	0.64	-0.03
9	B	Syr Darya	417,802	-6.2	-50.2	-4.22	0.57	0.63
10	B	Euphrates	761,713	-6.1	-90.2	-3.01	0.45	0.74
11	-	Iran	1,648,268	-9.9	<b>-309.9</b>	-12.05	0.93	0.72
12	B	Arabian	1,771,399	-5.8	-199.7	-23.19	0.98	0.05
13	A	Arizona Alluvial	225,404	-7.9	-34.5	-6.76	0.80	0.10
14	A	Upper Colorado	369,857	-3.0	-21.3	-3.75	0.58	0.02
15	A	C+S-High Plains	203,400	-6.8	-26.4	-3.24	0.52	-0.05
16	B	Paranaiba	319,365	-7.3	-45.1	-2.12	0.27	0.77
17	B	Danube	806,131	-4.8	-74.6	-2.83	0.43	-0.25
18	A	Paris	171,968	-3.6	-11.8	-3.58	0.52	0.22
19	B	Russian Platform	2,834,585	-3.1	-169.6	-2.80	0.38	-0.39
20	B	Volga	1,406,728	-3.1	-83.1	-2.32	0.34	-0.32
21	A	Tarim	468,333	-2.6	-28.8	-10.84	0.91	0.11
22	B	Lena	2,346,188	-2.3	-105.4	-2.61	0.33	-0.69
23	A	Nubian	2,203,920	-1.4	-59.9	-5.09	0.72	0.09
24	A	Great Artesian	1,727,400	0.9	30.4	0.55	0.03	0.41
25	B	Murray	1,069,567	1.1	23.3	0.60	0.06	0.26
26	A	Ogaden-Juba	1,035,211	2.2	44.8	3.38	0.57	0.28
27	A	Guarani	1,865,481	2.8	100.2	0.85	0.05	0.46
28	B	Yangtze	1,831,074	3.0	104.7	4.92	0.67	0.84
29	B	Godavari	327,126	3.6	22.5	1.49	0.14	0.83
30	A	MERAS	202,960	3.8	15.0	1.29	0.08	0.35
31	A	Columbia Plateau	114,178	4.3	9.5	4.14	0.58	0.70
32	A	Iullemeden	594,821	5.1	58.8	9.28	0.88	0.69
33	B	Niger	2,123,649	6.3	<b>260.1</b>	10.10	0.91	0.91
34	B	Volta	377,631	8.3	60.3	6.86	0.12	-0.36
35	A	U. Kalahari	989,348	5.7	108.6	1.33	0.10	0.67
36	A	N-High Plains	250,965	6.1	29.2	2.84	0.37	0.42



## Figures

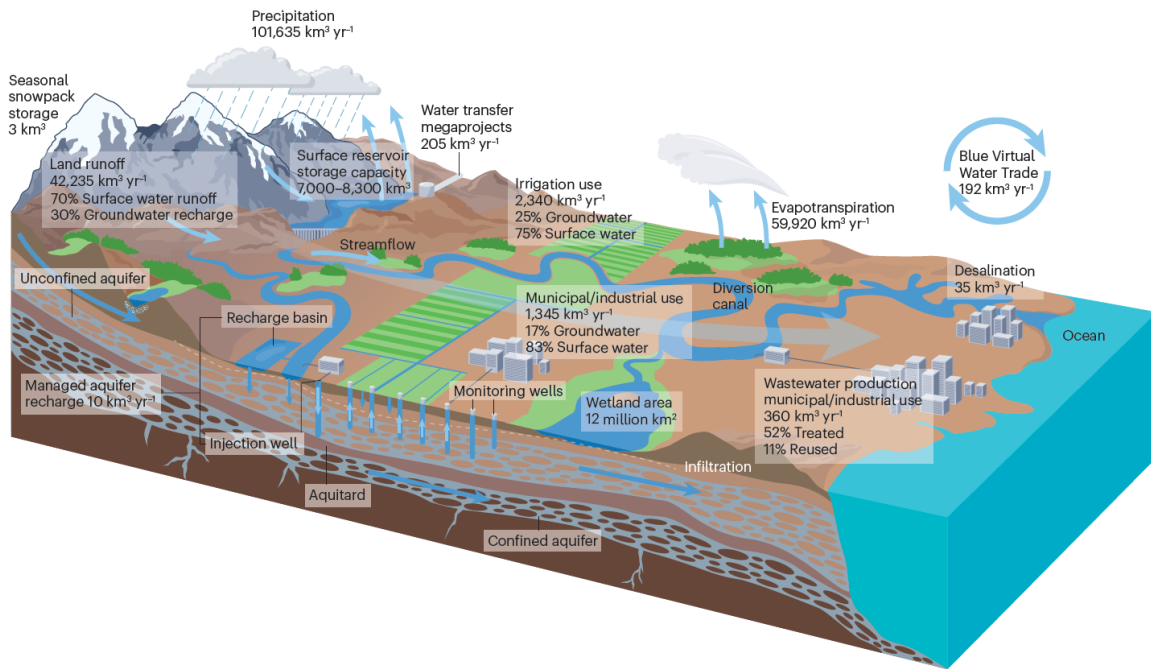
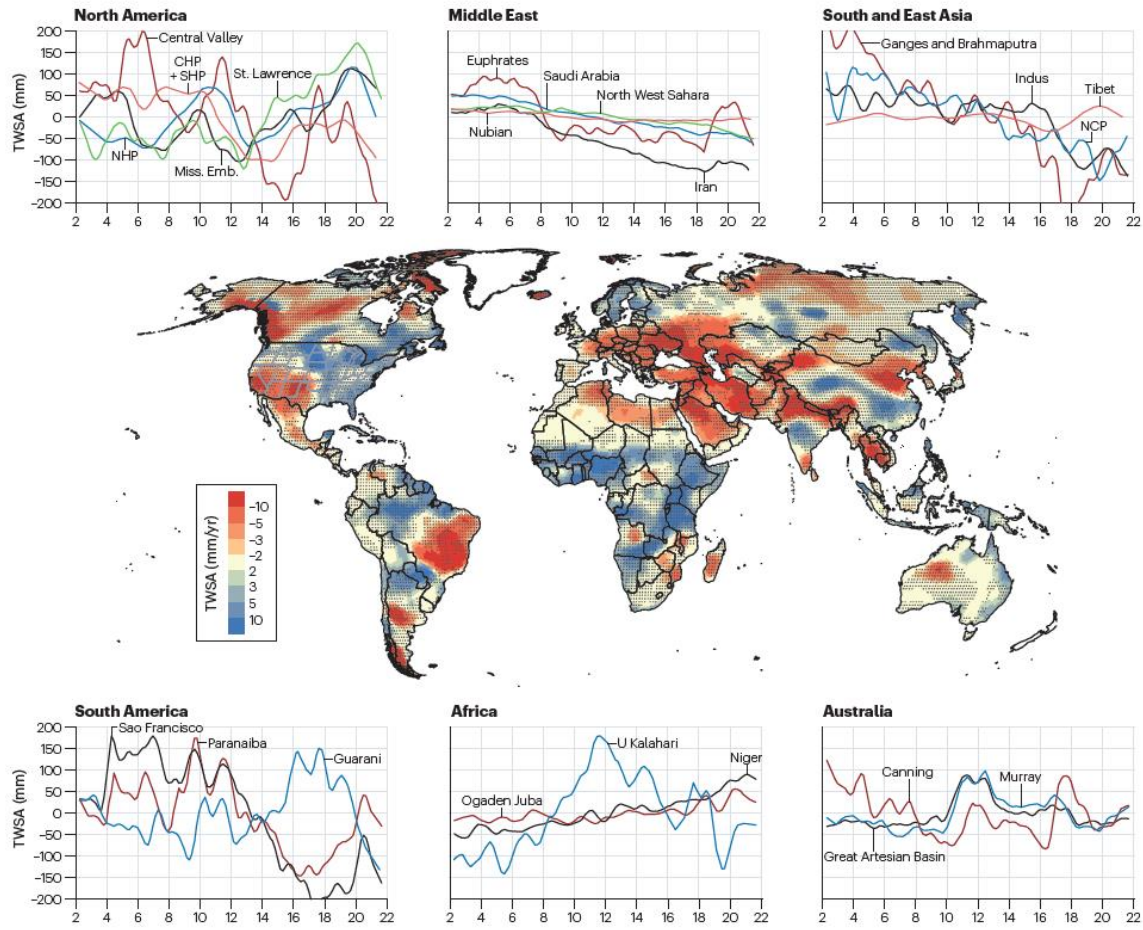


Figure 1. **The water cycle.** Includes representative values of global annual water storages and fluxes. Data and corresponding references provided in Supplementary Tables 1 and 2.





**Figure 2. GRACE satellite Total Water Storage trends.**

GRACE trends in Total Water Storage (TWS) anomalies based on GRACE satellite data (2002 – 2022) based on the mean of Univ. of Texas Center for Space Research (CSR) and NASA Jet Propulsion Laboratory (JPL) mascon (mass concentration) solutions. Stippling reflects areas where TWS trends exceed 3 standard deviations of interannual variability. Time series of GRACE TWSA shown for representative aquifers and basins. Trends and related data are provided for aquifers in Supplementary Table 3a and for river basins in Supplementary Table 3b. TWSA time series for selected aquifers and basins are in Supplementary Table 3c. Larger versions of time series graphs for all regions plus Central Asia are in Supplementary Fig. 1a-c).

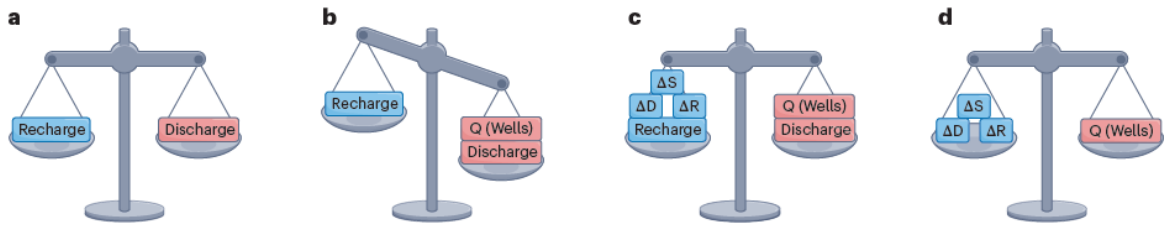


Figure 3. Schematic of aquifer dynamics in response to development (modified from<sup>19</sup>).

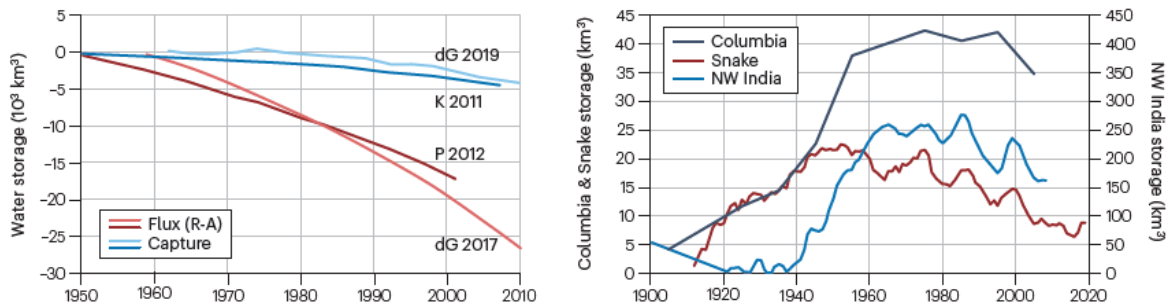


Figure 4. Modeled global and regional groundwater storage over time.

a | Groundwater storage volumes based on global models that simulate fluxes (recharge minus abstraction) based on de Graaf et al., 2017 [dG 2017]<sup>37</sup> and Pokhrel et al., 2012 [P 2012]<sup>35</sup>, versus global models that include capture of surface water and ET (de Graaf et al., 2019 [dG 2019]<sup>40</sup>; Konikow, 2011 [K 2011]<sup>38</sup>). There is much lower groundwater storage depletion when capture is modeled. b | Long-term groundwater storage changes in NW India and Central Pakistan (only shows NW India in legend because of space restrictions) and in NW US (Columbia Plateau and Snake River Plain). There has been a net increase in groundwater storage over past century, followed by declines since the 1990s. Data are provided in Supplementary Table 4.

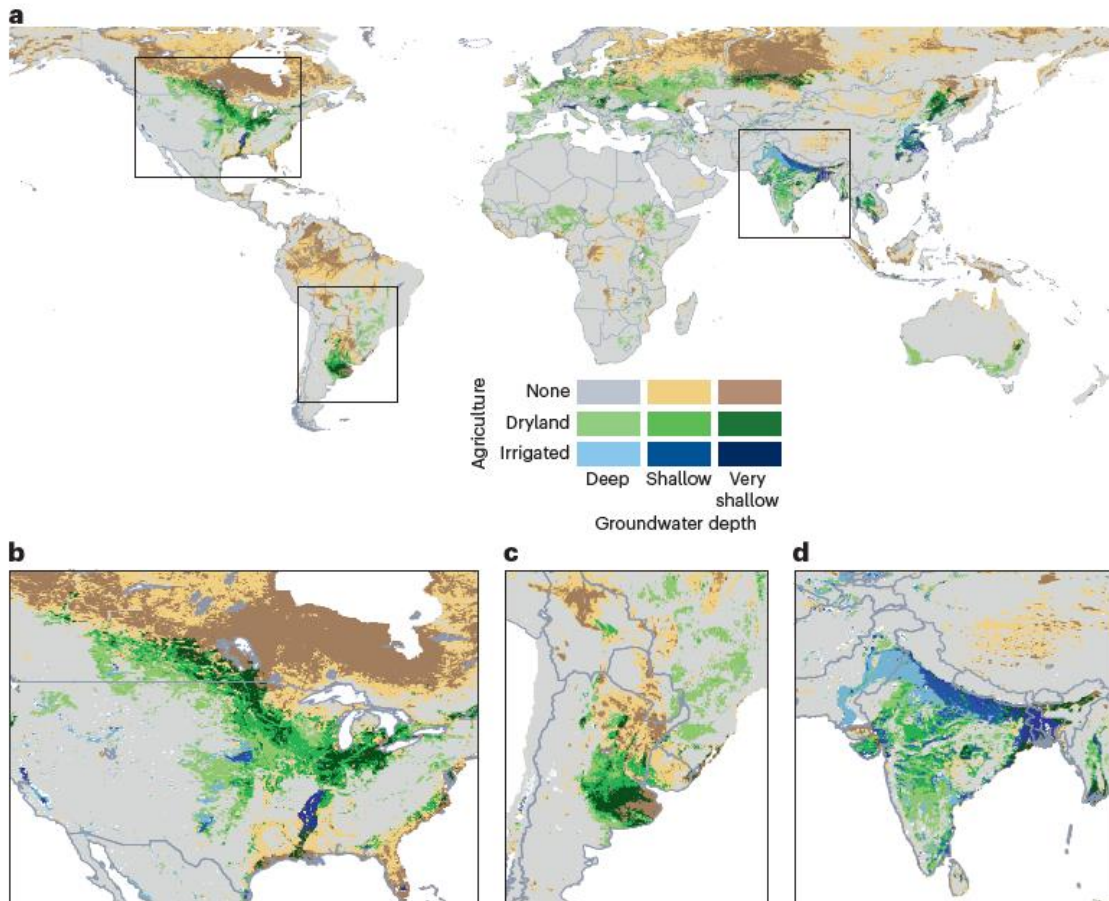


Figure 5. **Relationship between agricultural development and groundwater depth.**

a| The United States and Canada. b| the Pampas and Chaco regions of South America. c| The Po Valley in Western Europe. d| West Africa. e| India and Pakistan. f| Border region of Kazakhstan and Russia. g| Reference map. Cells are classified as agricultural if cropland areas exceed 30% of a cell's area. Irrigated agriculture is estimated from cell areas with  $\geq 30\%$  irrigated area. Groundwater depths of  $\leq 3$  m, 3 – 10 m, and  $> 10$ m correspond to very shallow, shallow, and deep groundwater, respectively. Data sources include cropland data<sup>175</sup>, water table depth<sup>176</sup>.

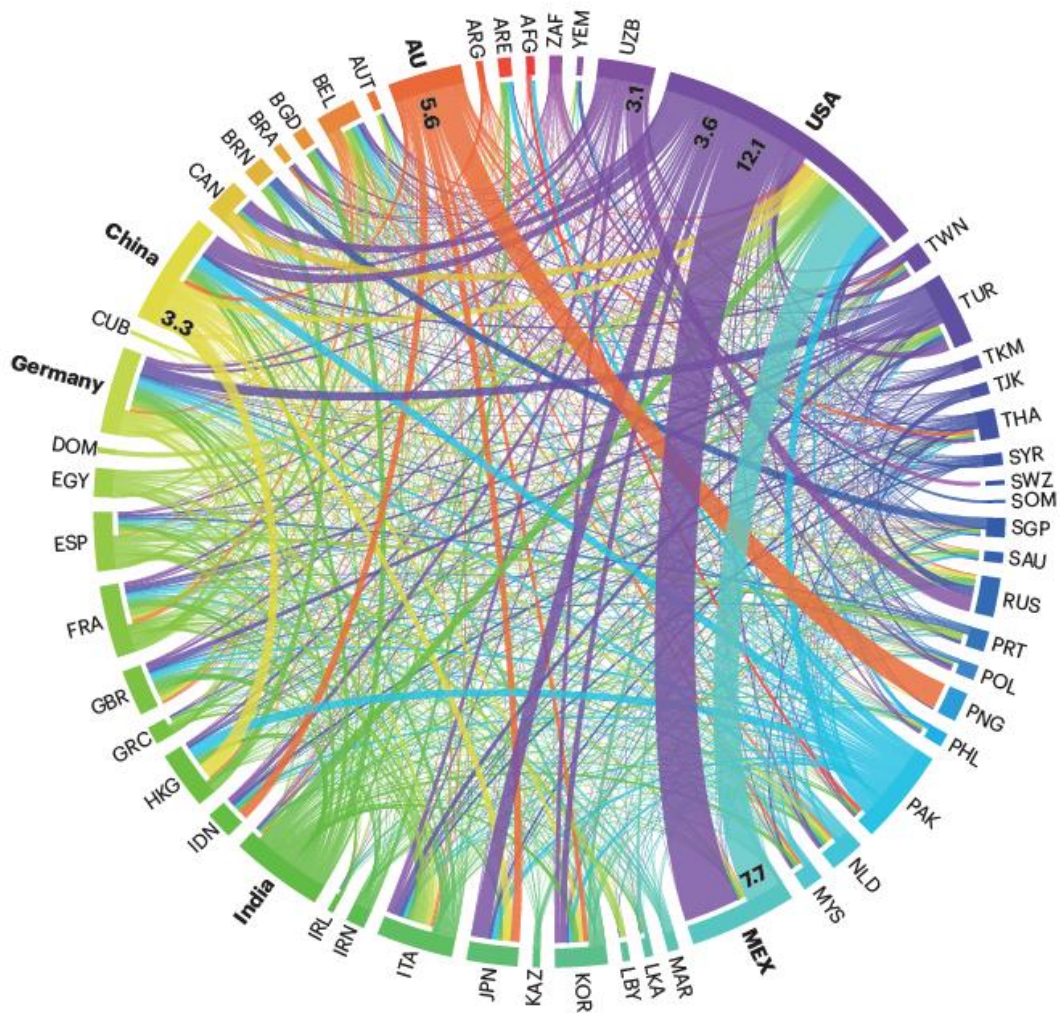


Figure 6. Virtual water flows. Global virtual water flows linked to food trade.

Blue virtual water flows between countries in  $\text{km}^3/\text{yr}$  based on 1996 – 2005 period of analysis<sup>8</sup>. The colors of the links correspond to the exporting country. The corresponding plot for virtual groundwater flows is in Supplementary Fig. 3a. Data are provided in Supplementary Table 8a.