

TO THE EDITOR:

Maintenance therapy for early loss of B-cell aplasia after anti-CD19 CAR T-cell therapy

Maria Gabelli,^{1,2,*} Macarena Oporto-Espuelas,^{3,*} Saskia Burridge,¹ Jan Chu,¹ Susan Farish,¹ Emma Hedges,⁴ Kirsty Ware,⁴ Lindsey Williams,¹ Lindsey Young,¹ Rajesh Alajangi,⁵ Philip Ancliff,⁴ Jack Bartram,⁴ Denise Bonney,⁶ Lenka Chenchara,⁷ Robert Chiesa,¹ Chiara Cugno,⁷ Katharine Hodby,⁵ Katarzyna A. Jalowiec,⁸ Arina Lazareva,¹ Giovanna Lucchini,¹ Oana C. Mirci-Danicar,⁹ Khushnuma Mullanfiroze,¹ Vesna Pavasovic,⁴ Anupama Rao,⁴ Kanchan Rao,¹ Lynne Riley,⁴ Sujith Samarasinghe,⁴ Geoff Shenton,¹⁰ Juliana Silva,¹ Ajay Vora,⁴ Rachael Hough,⁸ Persis J. Amrolia,^{1,3,†} and Sara Ghorashian^{4,11,†}

¹Department of Bone Marrow Transplantation, Great Ormond Street Hospital for Children, London, United Kingdom; ²Pediatric Onco-hematology and Hematopoietic Stem Cell Transplantation, Woman and Child Health Department, University of Padua, Padua, Italy; ³Molecular and Cellular Immunology Section, University College London Great Ormond Street Institute of Child Health, London, United Kingdom; ⁴Department of Haematology, Great Ormond Street Hospital for Children, London, United Kingdom; ⁵Bristol Haematology and Oncology Centre, University Hospitals Bristol and Weston NHS Foundation Trust, Bristol, United Kingdom; ⁶Department of Bone Marrow Transplantation, Royal Manchester Children's Hospital, Manchester, United Kingdom; ⁷Division of Pediatric Hematology Oncology, Sidra Medicine, Doha, Qatar; ⁸Haematology, University College London Hospital, London, United Kingdom; ⁹Department of Bone Marrow Transplantation, Royal Hospital for Children, Bristol, United Kingdom; ¹⁰Paediatric Oncology and Haematology, Great North Children's Hospital, Newcastle-upon-Tyne, United Kingdom; and ¹¹Developmental Biology and Cancer, University College London Great Ormond Street Institute of Child Health, London, United Kingdom

Chimeric antigen receptor (CAR) T-cell therapy has transformed the landscape of relapsed/refractory B-cell acute lymphoblastic leukemia (ALL) in children and young adults,^{1,2} with a 3-year relapse-free survival of 52% for tisagenlecleucel in the pivotal ELIANA trial.³ B-cell aplasia (BCA) is an indirect measure of anti-CD19 CAR T-cell presence. Early (≤ 6 months from infusion) loss of BCA (LBCA) was associated with high relapse risk in studies with tisagenlecleucel or other 41BBz anti-CD19 CAR T-cell products.⁴⁻⁹ However, with different anti-CD19 CAR T cells (eg, CD28-containing brexucabtagene), the long-term persistence of CAR T cells seems not required for durable remission.¹⁰

The optimal therapeutic strategy for patients with early LBCA after tisagenlecleucel is unclear; good outcomes have been achieved with consolidative hematopoietic stem cell transplant (SCT).^{3,9} However, SCT is associated with significant mortality, especially for patients with prior SCT within 12 months,¹¹ and with long-term side effects.¹² Indeed, a benefit of consolidative SCT after CAR T-cell therapy has not been demonstrated for patients who have received prior transplant.¹³ Moreover, not all patients have a suitable donor, and some are precluded from SCT because of comorbidities. At our center, children who received tisagenlecleucel and presented with early LBCA with a contraindication to SCT were treated with a maintenance chemotherapy regimen for 2 years, with promising early outcomes.¹⁴ Here, we report on the longer follow-up of a larger cohort of children and young adults from across the United Kingdom receiving maintenance chemotherapy or SCT after early LBCA.

We retrospectively collected data of patients treated either with tisagenlecleucel or experimental 41BBz anti-CD19 and anti-CD19/anti-CD22 CAR T cells (NCT02443831) in the United Kingdom from June 2017 to June 2022. The data cut-off date was 20 March 2023. Data were collected on a health service evaluation basis, on the basis of outcome assessment after CAR T-cell therapy. Consent for data collection was obtained from patients, parents, or legal guardians. Inclusion criteria were early LBCA (≤ 6 months from infusion) without evidence of disease, defined as morphological complete remission (CR) and negative measurable residual disease (MRD) by polymerase chain reaction analysis.

Submitted 10 July 2023; accepted 27 September 2023; prepublished online on *Blood Advances* First Edition 11 October 2023; final version published online 15 April 2024. <https://doi.org/10.1182/bloodadvances.2023011168>.

*M.G. and M.O.-E. are joint first authors.

†P.J.A. and S.G. are joint last authors.

The data sets are available on reasonable request from the corresponding author, Sara Ghorashian (s.ghorashian@ucl.ac.uk).

The full-text version of this article contains a data supplement.

© 2024 by The American Society of Hematology. Licensed under [Creative Commons Attribution-NonCommercial-NoDerivatives 4.0 International \(CC BY-NC-ND 4.0\)](https://creativecommons.org/licenses/by-nc-nd/4.0/), permitting only noncommercial, nonderivative use with attribution. All other rights reserved.

Table 1. Characteristic of patients, disease, and treatment

Variable	Total treated cohort, N = 19		Allogeneic SCT cohort, n = 11		Maintenance therapy cohort, n = 8		P
	N or median	% or IQR	n or median	% or IQR	n or median	% or IQR	
Male	6	31.60%	3	27.30%	3	37.5%	1
Age at CAR T-cell infusion, y	7.9	6.1-12.6	7.9	6.3-12.8	8.75	4.9-12.2	.8043
Characteristics of initial diagnosis							
Infant ALL, n	3	15.80%	1	9.10%	2	25%	.5459
Median WCC (x 10 ⁹ /L)	10	9.4-99.8	10	9.9-44	40	8.5-128.5	.8729
NCI risk							
High	7	36.80%	2	27.30%	4	50%	.37
Standard	9	47.40%	7	54.50%	3	37.50%	
Not known	3	15.80%	2	18.20%	1	12.50%	
Cytogenetic risk							
Good risk (total)	9	47.40%	5	45.50%	4	50%	1
Good risk (<i>ETV6-RUNX1</i>)	3	15.80%	2	18.20%	1	12.50%	
Good risk (high hyperdiploid)	6	31.60%	3	27.30%	3	37.50%	
Intermediate risk (total)	1	5.30%	1	9.10%	0		
Intermediate risk (<i>IKZF1</i> deletion)	1	5.30%	1	9.10%	0		
High risk (total)	5	26.30%	3	27.30%	2	25%	
High risk (<i>KMT2Ar</i>)	3	15.80%	1	9.10%	2	25%	
High risk (<i>BCR-ABL</i>)	1	5.30%	1	9.10%	0		
High risk (<i>t(17;19)/TCF3-HLF</i>)	1	5.30%	1	9.10%	0		
Uninformative cytogenetics							
Unknown	1	5.30%	1	9.10%	0		
Other	3	15.80%	1	9.10%	2	25%	
Characteristics of relapsed/refractory disease							
Indication for CAR T-cell therapy							
Primary refractory	1	5.30%	1	9.10%	0		1
Relapse	18	94.70%	10	90.90%	8	100%	
Refractory status at any time point	11	57.90%	7	63.60%	4	50%	.6577
Prior therapy							
Median number of relapses	1	1.0-2.0	1	1.0-1.5	1.5	1.0-2.0	.2754
CNS and extramedullary disease							
CNS at any point	11	57.90%	5	45.50%	6	75%	.3521
EM non-CNS relapses (both isolated and combined)	2	10.50%	1	9.10%	1	12.50%	1
Median number of previous therapy lines (excluding SCT)	2	2.0-2.0	2	2.0-2.0	2	2.0-2.2	.7737
Prior SCT	5	26.30%	2	18.20%	3	37.50%	.6027
Blinatumomab exposure	4	21.10%	1	9.10%	3	37.50%	.2621
Inotuzumab exposure	1	5.30%	0		1	12.50%	.4211
CAR T-cell therapy							
Status before lymphodepletion							
High disease burden (≥5%)	3	15.80%	2	18.20%	1	12.50%	1
Low disease burden (<5%)	11	57.90%	6	54.60%	5	62.50%	
Undetectable by MRD	5	26.30%	3	27.30%	2	25%	
CAR T-cell product							
Tisagenlecleucel	17	89.50%	10	90.90%	7	87.50%	1

CNS, central nervous system; Dexa, dexamethasone; EM, extramedullary; Haplo, haploidentical; IQR, interquartile range; MMUD, mismatched unrelated donor; MRD, minimal residual disease; MSD, matched sibling donor; MUD, matched unrelated donor; NCI, National Cancer Institute; NR, not reached; TBI, total body irradiation; UCB, umbilical cord blood; VCR, vincristine; WCC, white blood cell count.

Downloaded from http://ashpublications.org/bloodadvances/article-pdf/8/8/1959/2222781/blooda_adv-2023-011168-main.pdf by guest on 25 April 2024

Table 1 (continued)

Variable	Total treated cohort, N = 19		Allogeneic SCT cohort, n = 11		Maintenance therapy cohort, n = 8		P
	N or median	% or IQR	n or median	% or IQR	n or median	% or IQR	
Experimental	2	10.50%	1	9.10%	1	12.50%	
Median CAR T-cell dose, cells per kg, (n = 17)	2.7 × 10 ⁶	1.8-3.7 × 10 ⁶	3.4 × 10 ⁶	2.5-4.3 × 10 ⁶	2.4 × 10 ⁶	1.5-2.8 × 10 ⁶	.2069
Time to LBCA							
Median (months)	2.66	95% CI : 2.3-3.6	2.66	95% CI : 2.07 to NR	2.64	95% CI : 2.3 to NR	.9
0-3 months	13	68.4%	7	63.60%	6	75%	1
3-6 months	6	31.60%	4	34.4%	2	25%	
Post-CAR T-cell treatment							
Median time from LBCA to SCT (mo)	2.4	1.7-4.5	1				
SCT conditioning							
TBI-based			8	72.7%			
Non-TBI			3	27.30%			
SCT donor							
MUD			7	72.70%			
MMUD (UCB)			1	9.00%			
MSD			2	18.20%			
Haplo			1	9.00%			
Maintenance with VCR/Dexa pulses							
Yes					4	50%	
No					4	50%	

CNS, central nervous system; Dexa, dexamethasone; EM, extramedullary; Haplo, haploidentical; IQR, interquartile range; MMUD, mismatched unrelated donor; MRD minimal residual disease; MSD, matched sibling donor; MUD, matched unrelated donor; NCI, National Cancer Institute; NR, not reached; TBI, total body irradiation; UCB umbilical cord blood; VCR, vincristine; WCC, white blood cell count.

LBCA was defined as peripheral B-cell count $\geq 0.10 \times 10^9/L$ and/or bone marrow CD19⁺ events $\geq 0.1\%$, measured on >1 occasion, at least 2 weeks apart. Peripheral lymphocyte subsets were monitored monthly, whereas marrow aspirate was checked at 1, 3, 6, 9, and 12 months after CAR T-cell infusion. MRD negativity was defined at a lower limit of at least 1×10^{-4} by polymerase chain reaction for leukemia-specific immunoreceptor gene rearrangements. Maintenance was administered as per the United Kingdom National Randomised Trial For Children and Young Adults with Acute Lymphoblastic Leukaemia and Lymphoma 2011 (UKALL2011) protocol (European Union Drug Regulating Authorities Clinical Trials Database, number 2010-020924-22): oral mercaptopurine (75 mg/m² daily) with weekly oral methotrexate (20 mg/m²) and 3-monthly intrathecal methotrexate (age-adjusted doses) for 2 years. Patients were also treated with or without monthly pulses (vincristine 1.5 mg/m² IV, day 1; dexamethasone 6 mg/m² per day, days 1-5), depending on prior toxicity to these agents. Allogeneic SCT was performed according to institutional guidelines and donor availability.

Categorical variables were compared using 2-tailed Fisher test, and continuous variables using the Wilcoxon test for unpaired data. Survival was calculated by Kaplan-Meier analysis and group comparison by log-rank test. Overall survival (OS) was defined as the time from LBCA to death, and patients were censored at the last follow-up. Event-free survival (EFS) was defined as the time from LBCA to death or relapse, whichever occurred first. Significance was set at a P value < .05 (2-sided).

We retrospectively collected data of pediatric and young adult patients (aged ≤ 25 years) treated in the United Kingdom for ALL with tisagenlecleucel, AUTO1, or AUTO1/22 (experimental 41BBz anti-CD19 or anti-CD19-CD22 CAR T-cell product, respectively, NCT02443831). Of 151 patients who received CAR T-cell infusion (125 with tisagenlecleucel, 14 with AUTO1, and 12 with AUTO1/22), 137 (90.7%); 115 receiving tisagenlecleucel, 12 receiving AUTO1, and 10 receiving AUTO1/22) achieved CR with the onset of BCA and were evaluable for longer term outcomes. Of these patients, 32 patients (21.2%; 27 receiving tisagenlecleucel, 3 receiving AUTO1, and 2 receiving AUTO1/22) developed early LBCA with no evidence of detectable disease. For 11 of 32 patients (34.3%), allogeneic SCT was undertaken, 8 patients (25%) were started on maintenance therapy, 6 (18.7%) had no further therapy, 4 (12.5%) received a second tisagenlecleucel infusion, 2 (6.2%) had other treatment, and 1 (3%) had missing data. Of the 6 patients who received no immediate treatment for early LBCA, 5 had a frank relapse: 2 are alive in CR, 2 died of disease, and 1 died after achieving another remission (supplemental Table).

For the purposes of this report, the study population comprised the 11 patients who received SCT and the 8 patients who received maintenance. This cohort included 17 patients receiving tisagenlecleucel and 2 receiving experimental CAR T-cell products (1 receiving AUTO1 and 1 receiving AUTO1/22). Reasons for being treated with maintenance rather than SCT were prior total body irradiation-based SCT (3 patients), absence of a well-matched SCT

donor (2 patients), patient comorbidities (2 patients), and family preference (1 patient). The baseline characteristics of patients in each treatment cohort were well matched (Table 1). All patients achieved complete remission with incomplete hematologic recovery (CR/CRi) on day 30 after CAR T-cell infusion, and the median time to LBCA was similar in the 2 cohorts. Median follow-up time from LBCA was 21.5 months (95% confidence interval [CI], 12.3 to not reached) for the SCT and 23 months (95% CI, 14.7 to not reached) for the maintenance group. There was no significant difference between the survival of patients receiving either SCT or maintenance: the 1-year OS rate was 80.8% (95% CI, 60-100) and 75% (95% CI, 50.3-100), respectively; the 1-year EFS rate was 80.8% (95% CI, 60-100) and 75% (95% CI, 50.3-100), respectively ($P > .05$; Figure 1). In the SCT group, 2 patients relapsed with CD19⁻ disease, 1 and 2 years after SCT, respectively, and both patients are alive, receiving further treatment. Two patients died of transplant-related mortality (TRM). Seven patients (63.6%) remain alive in molecular remission without further treatment. In the maintenance

group, 3 of 8 patients (37.5%) relapsed with CD19⁺ disease at a median 76 days (95% CI, 60 to not reached) after LBCA: 1 patient received transplantation, had a further relapse, and is currently alive with disease; 2 patients died of disease; and no patient died of treatment-related toxicity. Five patients (62.5%) remain alive in molecular remission: 2 have completed 2 years of maintenance, and 3 remain on maintenance therapy. Of these patients, 4 had favorable cytogenetics (*ETV6-RUNX1*, n = 1 and high hyperdiploidy, n = 3), 1 patient had *KMT2A* rearrangement, and 1 patient had complex cytogenetics.

Early LBCA after tisagenlecleucel is associated with a high risk of relapse: cumulative incidence of CD19⁺ relapse approached 65% at 2 years in a French cohort,⁷ whereas the 2-year EFS rate was 15% for patients with LBCA of <6 months in a recent study.⁵ Treatment strategies for this group remain limited. Infusion of a further dose of the same CAR T-cell product reinduced BCA in approximately half of patients without detectable disease, but the

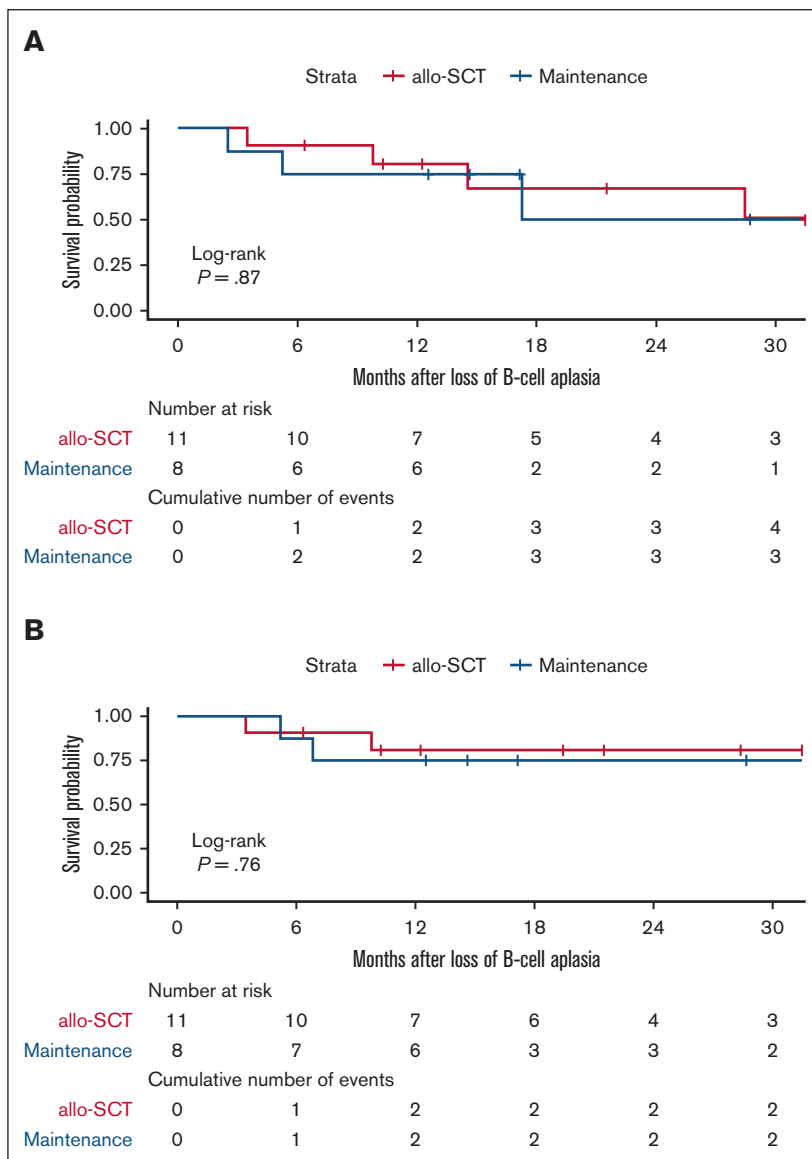


Figure 1. Outcomes for children with early loss of B-cell aplasia following CAR T according to further therapy (maintenance vs stem cell transplantation). EFS (A) and OS (B) for patients treated with allogeneic SCT (red line) or maintenance therapy (blue line) for early LBCA after CAR T-cell treatment.

3-year disease-free survival rate was only 33%.¹⁵ Most patients have been treated with SCT in this context. A study from the National Institute of Health reported a 5-year EFS rate of 61.9% in 21 patients who received consolidative SCT after nonpersisting CD28z anti-CD19 CAR T cells.⁹ However, whether SCT confers a definitive survival advantage in this setting remains unclear. A Seattle group reported that SCT led to improved disease-free survival among 23 patients, with short persistence of experimental 41BBz anti-CD19 CAR T cells; however, this did not translate into a better OS, and the benefit of consolidative SCT was only seen for patients without a prior history of SCT.¹³

In a single-center setting, we noted preliminary good outcomes from maintenance therapy for patients with a contraindication to SCT.¹⁴ As a UK pediatric ALL CAR T-cell consortium, we therefore collected data on patients with early LBCA to compare the impact of maintenance vs SCT. Our analysis shows that maintenance was a safe alternative for these patients. Despite a slightly higher number of relapses in the maintenance group, there were no TRM events in this group, compared with 2 TRM deaths after SCT. As a result, both groups had similar OS and EFS. This highlights the toxicity of SCT in patients who are heavily pretreated.

Maintenance was well tolerated, low cost, easy to deliver, and with a good quality of life reported informally by patients and their families. Because of the small size of the cohort, it was not possible to identify predictive factors for patients with a good outcome from maintenance, for example, characteristics suggesting particularly chemotherapy-sensitive disease; however, 4 of 6 patients had good risk cytogenetics at diagnosis.

Our preliminary study is limited by the retrospective design and, despite being population-based, by the small cohort size; moreover, we recognize that longer term follow-up will be needed to capture late relapses seen in some genetic subtypes, for example, *ETV6-RUNX1* and high hyperdiploid ALL.

Our data show that maintenance chemotherapy could have a potential benefit in patients with LBCA who cannot proceed to SCT or second CAR T-cell infusion, either because of contraindications or because of limited resources. A prospective clinical trial comparing SCT vs maintenance therapy is needed to clearly define outcomes of these therapies in this setting.

Contribution: M.G., M.O.-E., P.A., and S.G. designed the research study and wrote the manuscript; M.G. and M.O.-E. collected and analyzed the data; and all authors looked after patients, provided essential data, and reviewed and approved the final manuscript.

Conflict-of-interest disclosure: P.J.A. declares patents with and royalties from University College London Business and Autolus; received research funding from Autolus; and declares consultancy with Beam Therapeutics. S.G. received honoraria and speaker's fees from Novartis and declares patents with and royalties from University College London Business. The remaining authors declare no competing financial interests.

ORCID profiles: M.G., 0000-0002-6226-9895; C.C., 0000-0002-1664-3030; K.A.J., 0000-0003-3284-8308; P.J.A., 0000-0003-0480-3911; S.G., 0000-0002-1555-2946.

Correspondence: Sara Ghorashian, Developmental Biology and Cancer, University College London Great Ormond Street Institute

of Child Health, 30 Guilford St, London WC1N 1EH, United Kingdom; email: s.ghorashian@ucl.ac.uk.

References

1. Maude SL, Laetsch TW, Buechner J, et al. Tisagenlecleucel in children and young adults with B-cell lymphoblastic leukemia. *N Engl J Med*. 2018;378(5):439-448.
2. Pasquini MC, Hu Z-H, Curran K, et al. Real-world evidence of tisagenlecleucel for pediatric acute lymphoblastic leukemia and non-Hodgkin lymphoma. *Blood Adv*. 2020;4(21):5414-5424.
3. Laetsch TW, Maude SL, Rives S, et al. Three-year update of tisagenlecleucel in pediatric and young adult patients with relapsed/refractory acute lymphoblastic leukemia in the ELIANA Trial. *J Clin Oncol*. 2023;41(9):1664-1669.
4. Pillai V, Muralidharan K, Meng W, et al. CAR T-cell therapy is effective for CD19-dim B-lymphoblastic leukemia but is impacted by prior blinatumomab therapy. *Blood Adv*. 2019;3(22):3539-3549.
5. Pulsipher MA, Han X, Maude SL, et al. Next-generation sequencing of minimal residual disease for predicting relapse after tisagenlecleucel in children and young adults with acute lymphoblastic leukemia. *Blood Cancer Discov*. 2022;3(1):66-81.
6. Turtle CJ, Hanafi L-A, Berger C, et al. CD19 CAR-T cells of defined CD4+:CD8+ composition in adult B cell ALL patients. *J Clin Invest*. 2016;126(6):2123-2138.
7. Dourthe M-E, Rabian F, Yakouben K, et al. Determinants of CD19-positive vs CD19-negative relapse after tisagenlecleucel for B-cell acute lymphoblastic leukemia. *Leukemia*. 2021;35(12):3383-3393.
8. Mueller KT, Maude SL, Porter DL, et al. Cellular kinetics of CTL019 in relapsed/refractory B-cell acute lymphoblastic leukemia and chronic lymphocytic leukemia. *Blood*. 2017;130(21):2317-2325.
9. Shah NN, Lee DW, Yates B, et al. Long-term follow-up of CD19-CAR T-cell therapy in children and young adults with B-ALL. *J Clin Oncol*. 2021;39(15):1650-1659.
10. Shah BD, Ghobadi A, Oluwole OO, et al. Two-year follow-up of KTE-X19 in patients with relapsed or refractory adult B-cell acute lymphoblastic leukemia in ZUMA-3 and its contextualization with SCHOLAR-3, an external historical control study. *J Hematol Oncol*. 2022;15(1):170.
11. Yaniv I, Krauss AC, Beohou E, et al. Second hematopoietic stem cell transplantation for post-transplantation relapsed acute leukemia in children: a retrospective EBMT-PDWP study. *Biol Blood Marrow Transplant*. 2018;24(8):1629-1642.
12. Holmqvist AS, Chen Y, Hageman L, et al. Severe, life-threatening, and fatal chronic health conditions after allogeneic blood or marrow transplantation in childhood. *Cancer*. 2023;129(4):624-633.
13. Summers C, Wu QV, Annesley C, et al. Hematopoietic cell transplantation after CD19 chimeric antigen receptor T cell-induced acute lymphoblastic lymphoma remission confers a leukemia-free survival advantage. *Transplant Cell Ther*. 2022;28(1):21-29.
14. Gabelli M, Oporto Espuelas M, Bonney D, et al. ALL maintenance treatment for early loss of B-cell aplasia after tisagenlecleucel therapy. *Blood*. 2021;138(suppl 1):3859.
15. Myers RM, Devine K, Li Y, et al. Outcomes after reinfusion of CD19-specific chimeric antigen receptor (CAR)-modified T cells in children and young adults with relapsed/refractory B-cell acute lymphoblastic leukemia [abstract]. *Blood*. 2021;138(suppl 1):474.