

Aertsen Michael (Orcid ID: 0000-0003-1994-5365)  
Vercauteren Tom (Orcid ID: 0000-0003-1794-0456)  
Deprest Jan (Orcid ID: 0000-0002-4920-945X)  
Joyeux Luc (Orcid ID: 0000-0001-7331-6354)

## Neuroprotection is improved by watertightness of fetal spina bifida repair in fetal lamb

L. Joyeux<sup>1-4\*</sup>, J. van der Merwe<sup>1-3</sup>, M. Aertsen<sup>5</sup>, P. A. Patel<sup>6</sup>, A. Khatoun<sup>7</sup>, M. G. M. C. Mori da Cunha<sup>1</sup>, S. De Vleeschauwer<sup>8</sup>, J. Parra<sup>1,9</sup>, E. Danzer<sup>10</sup>, M. McLaughlin<sup>6</sup>, D. Stoyanov<sup>11</sup>, T. Vercauteren<sup>12</sup>, S. Ourselin<sup>12</sup>, E. Radaelli<sup>13</sup>, P. de Coppi<sup>1-3,14</sup>, F. Van Calenbergh<sup>15</sup>, J. Deprest<sup>1-3,16\*</sup>

1. My FetUZ Fetal Research Center, Department of Development and Regeneration, Biomedical Sciences, KU Leuven, Leuven, Belgium
2. Center for Surgical Technologies, Faculty of Medicine, KU Leuven, Leuven, Belgium
3. Department of Obstetrics and Gynecology, Division Woman and Child, Fetal Medicine Unit, University Hospitals Leuven, Leuven, Belgium
4. Department of Pediatric Surgery, Texas Children's Hospital and Baylor College of Medicine, Houston, TX, USA
5. Department of Radiology, University Hospitals Leuven, Leuven, Belgium
6. Radiology Department, Great Ormond Street Hospital for Children, NHS Foundation Trust, London, United Kingdom
7. Exp ORL, Department of Neurosciences, KU Leuven, Leuven, Belgium
8. Animal Research Center, Biomedical Sciences, KU Leuven, Leuven, Belgium
9. BCNatal | Fetal Medicine Research Center, Hospital Clinic and Hospital Sant Joan de Déu, University of Barcelona, Barcelona, Spain
10. Division of Pediatric Surgery, Lucile Packard Children's Hospital, Stanford University, Stanford, California, USA
11. Wellcome/EPSRC Centre for Interventional and Surgical Sciences, University College London, London, UK
12. School of Biomedical Engineering & Imaging Sciences, King's College London, London, UK
13. Department of Pathobiology, Ryan Veterinary Hospital, University of Pennsylvania School of Veterinary Medicine, Philadelphia, PA, USA
14. Specialist Neonatal and Pediatric Surgery Unit, Great Ormond Street Hospital, University College London Hospitals, NHS trust, London, UK
15. Department of Neurosurgery, University Hospitals Leuven, Leuven, Belgium
16. Institute of Women's Health, University College London Hospitals, London, United Kingdom

### Corresponding authors:

Correspondence and requests for materials should be addressed to L.J. and J.D.  
(emails: [luc.joyeux@kuleuven.be](mailto:luc.joyeux@kuleuven.be); [jan.deprest@uzleuven.be](mailto:jan.deprest@uzleuven.be))

**Short title:** Watertight fetal spina bifida repair is effective

This article has been accepted for publication and undergone full peer review but has not been through the copyediting, typesetting, pagination and proofreading process which may lead to differences between this version and the [Version of Record](#). Please cite this article as doi: [10.1002/uog.24907](https://doi.org/10.1002/uog.24907)

**Keywords:** Neural tube defects, spina bifida aperta, myelomeningocele, fetal surgery, neuroprotection, watertight repair.

## **CONTRIBUTION**

### **What are the novel findings of this work?**

Watertight layered fetal repair of spina bifida is neuroprotective at birth in the fetal lamb model as evidenced by 100% reversal of hindbrain herniation, lower cerebrospinal fluid leakage, better spinal cord neuromotor function, higher brain neuronal density and spinal cord reactive astrogliosis.

### **What are the clinical implications of this work?**

A fetal spina bifida layered repair that achieves watertightness should be adopted clinically regardless of the open or fetoscopic approach to improve neuroprotection.

## ABSTRACT

**Objectives:** the MOMS randomized trial has demonstrated that prenatal spina bifida aperta (SBA) repair via open approach is safe and effective for both mother and fetus, yet half of the infants have incomplete reversal of hindbrain herniation and no improvement in neuromotor function. One contributing factor may be the incompleteness of the neurosurgical repair causing persistent in utero leakage of cerebrospinal fluid (CSF) and exposure of the spinal cord to the amniotic fluid until birth. We aim to investigate the neurostructural and neurofunctional efficacy of the watertightness of prenatal SBA repair.

**Methods:** a superiority study was conducted in the validated SBA fetal lamb model and powered (n=7 per group). Outcomes of lambs undergoing watertight or non-watertight multilayer repairs through an open approach were compared to those in unrepaired SBA lambs at delivery (term=145 days). At ~75-day fetal lambs underwent standardized induction of lumbar SBA. At ~100 days, they were assigned to one of the three groups and subsequently to either watertight or non-watertight layered repair group based on an intraoperative watertightness test using subcutaneous fluoresceine injection. Finally, at 1-2 postnatal days, we assessed reversal of hindbrain herniation on Magnetic Resonance Imaging (MRI) as primary outcome. Secondary proxies of neuroprotection were CSF leakage at the repair site; hindlimb motor function based on joint movement score, locomotor grade and Motor Evoked Potentials (MEP); neuroprotection score encompassing live birth, hindbrain herniation reversal, absent CSF leakage and joint score  $\geq 9/15$ ; and brain and spinal cord histology and immunohistochemistry. As the watertightness test is not clinically usable, we developed a potential surrogate intraoperative quality score and assessed its relationship with improved outcomes. This four-point scoring system is based on visual assessment of the quality of the skin repair (suture inter-run distance  $\leq 3$ mm, absence of tear and ischemia).

**Results :** Compared to unrepaired lambs, watertight repair was neuroprotective in 5/7 lambs (neuroprotection score of 4/4), as evidenced by a 100% reversal of hindbrain herniation on MRI; lower CSF leakage rate (14%); better hindlimb motor function evidenced by higher joint movement score, locomotor grade, and MEP area-under-the-curve and peak-to-peak amplitude; higher neuronal density in the hippocampus and corpus callosum; and higher reactive astrogliosis at the SBA lesion epicenter. Conversely, non-watertight SBA repair did not achieve the same level of neuroprotection (1/7) due to non-significant 86% hindbrain herniation reversal, no motor function improvement, high CSF leakage (43%), low brain neuron count in both regions and low spinal astroglial cell area at the epicenter. Like watertight layered repair, a high quality score ( $\geq 2/3$ ) was associated with improved outcomes yet watertightness test and quality score could not be used interchangeably due to results discrepancies.

**Conclusions:** A watertight layered fetal SBA repair improves brain and spinal cord structure and function in the fetal lamb model. This translational research has important clinical implication and neurosurgical technique that achieves watertightness should be adopted in all fetal centers to improve neuroprotection. Future clinical studies could assess whether the high quality of the repair correlates with clinical outcomes for neuroprotection.

## INTRODUCTION

Spina bifida aperta (SBA) is a non-lethal yet progressive congenital malformation of the central nervous system. SBA pathogenesis is explained by two consecutive hits.<sup>1-4</sup> The initial malformation arises when the neural tube fails to close by the 6<sup>th</sup> week of gestation. This exposes the vulnerable neural elements continuously to direct mechanical and chemical trauma from the amniotic fluid, leading to progressive dysplasia and function loss during gestation. Leakage of cerebrospinal fluid (CSF) through the open endplate canal leads to a suction gradient<sup>5-7</sup> causing hindbrain herniation<sup>2, 5, 8-10</sup>. After birth, SBA children display various degrees of paraplegia, deformation of spine and limbs, bladder, bowel and sexual dysfunction.<sup>11</sup> They also have variable degrees of neurocognitive impairment<sup>11</sup> as well as Chiari type II malformation<sup>12</sup> and ventriculomegaly that may respectively require posterior fossa decompression and CSF diversion when symptomatic<sup>11, 13</sup>.

Given the in utero progressive nature of SBA, prenatal repair was considered first experimentally<sup>3, 14</sup>. Later the Management Of Myelomeningocele Study (MOMS) randomized trial demonstrated that prenatal, as compared to postnatal repair, reduces the shunt rate at 12 months, and increases the chances for children to walk independently at 30 months (45% vs. 24%).<sup>14-16</sup> Fetal neurosurgical repair mimicked the postnatal repair technique consisting of an anatomical “primary” layered repair including at least dura and skin.<sup>14</sup> Arrest of CSF leakage is believed to explain the significant reduction of hindbrain herniation (36% vs. 4% of complete reversal).<sup>14, 17</sup> Prevention of ongoing exposure of the spinal cord and nerves to the amniotic fluid could significantly improve neuromotor function.<sup>16, 17</sup>

The positive effect of the operation seems to be mainly related to the repair watertightness for CSF and amniotic fluid, especially when performed in layers regardless of the open or fetoscopic approach.<sup>18, 19</sup> However, the efficacy of the watertightness of the fetal SBA layered repair has never been assessed neither experimentally<sup>20</sup> nor clinically. We aimed to experimentally determine such efficacy in the validated SBA lamb model.<sup>21</sup> Confirming or refuting this hypothesis bears relevance to the current discussion around modifying neurosurgical open or fetoscopic techniques<sup>22-24</sup> and add relevant evidence to the benefit of fetal surgery for this devastating disease.

## METHODS

This study was approved by our university Ethics Committee on Animal Experimentation (P285-2014). It followed the NC3Rs and the ARRIVE guidelines for animal research.<sup>25, 26</sup>

### Study design

Given that there was no previous experimental data available and a direct comparison of watertight versus non-watertight layered repair would require very high numbers of animals which is against the above guidelines, indirect comparison<sup>27</sup> was made by comparing each repaired group to unrepaired SBA (historical controls (n=6)<sup>21</sup> plus one animal). We designed a superiority study where primary outcome was complete reversal of hindbrain herniation, measured by Magnetic Resonance Imaging (MRI) at birth.<sup>21</sup> Power calculation was based on the following assumptions: (1) the spontaneous hindbrain reversal rate in unrepaired SBA lambs is 14%<sup>21</sup>; (2) the reversal rate in watertight layered repair should be  $\geq 99\%$ ; and (3) two-sided Fisher's exact test with 5% significance level, 80% power. This required seven live born fetuses per group. Experimental animals were respectively assigned to either watertight or non-watertight repair group based on the absence or presence of leakage at the repair site during an intraoperative watertightness test performed immediately after completion of a two-layer SBA repair with patch and skin.

### Experimental animals and procedures

Time-dated pregnant Swifter sheep (term: 145 days of gestation) were provided by the university farm. A standardized 4.2x4.2cm L1-6 lumbar SBA defect including myelotomy was induced at mid gestation at ~75 days (Figure 1, Appendix S1).<sup>21</sup>

At ~100 days, this myeloschisis-type defect was repaired in two layers mimicking the MOMS clinical technique<sup>14</sup>, i.e. using a dura-fascia replacement patch (DuraGen-Plus) since the model does not allow a more effective multilayer repair using musculofascia flaps<sup>18, 20</sup> covered by native skin (Figure 1, Appendix S1). We also chose the DuraGen matrix because it rapidly provides watertight closure when covered by a watertight layer to prevent CSF leakage while promoting natural dural growth.<sup>28-30</sup> Watertightness is due to initial fibrin clot formation and secondary tissue ingrowth.<sup>28-30</sup> To avoid iatrogenic damage to the spinal cord, we tested the watertightness of the two-layer repair at the end of the repair using diluted fluorescein instilled through a microcatheter inserted under the skin (Figure 1, Appendix S1).<sup>31</sup> Fluorescein was injected at a standardized pressure of 30cm water, which is the highest CSF pressure measured in young children.<sup>32</sup> Leakage was visualized with an ultraviolet flashlight. For animals in the watertight group, additional sutures (range: 0-4) were placed until leakage stopped. For the non-watertight group, the skin was closed but care was taken that there was confirmed leakage on at least one place.

At term ewes were delivered by cesarean section through flank incision under spinal anesthesia.<sup>33</sup> Lambs recovered on the first day and were fed ad libitum.

### Outcome measures

All outcomes were standardized and assessed by two independent observers blinded to the allocated experimental condition. These outcomes have been validated and described previously (Appendix S2).<sup>21</sup> On the first day of life, we performed a gross examination of the SBA defect followed by a neurological clinical examination of each lamb<sup>21, 34</sup> mainly to quantify a hindlimb joint movement score

and a locomotor grade with a validated species-specific locomotor rating scale<sup>35</sup>. On day two, general anesthesia was induced and maintained.<sup>21, 33</sup> Lambs first underwent whole-body MRI.<sup>21</sup> Motor Evoked Potentials (MEP)<sup>33</sup> and Somatosensory Evoked Potentials (SEP) were subsequently recorded. Finally the lambs were euthanized and histological samples of the brain, spinal cord from L1-L6, bladder, rectum and hindlimb muscles were harvested and prepared for standard histology and immunohistochemistry.

We also developed a compound neuroprotection score based on a recent clinical systematic review (Appendix S2).<sup>36</sup> We modified this composite five-point scoring system to live birth, complete reversal of hindbrain herniation, absence of CSF leakage and conservation of motor function, evidenced by a joint movement score  $\geq 9/15$ . Each item was binary and neuroprotection was defined by a maximum score of 4/4.

#### **Intraoperative quality score of skin repair**

As the watertightness test is not clinically usable, we also developed a potential surrogate, i.e. an empirical scale for intra-operative visual assessment of the quality of the skin repair. Repairs were scored on a scale from 0 to 3, by scoring three items (as 0 or 1): skin suture inter-run distance  $\leq 3\text{mm}$ , absence of tear and absence of ischemia, based on what was previously used in epithelial wound closure studies.<sup>37</sup> Intraoperative photographs were scored after the experiment by two independent blinded readers and averaged. Lambs were subsequently categorized as either having a “high quality score” ( $\geq 2$ ) or “low quality score” ( $< 2$ ).

#### **Statistical methods**

We used well-powered and reliable outcome measurements (Appendix S3).<sup>21</sup> Binomial and ordinal variables were expressed as percentage and score, respectively. Chi-square test with Yates' correction was used for comparison due to the three groups. Continuous variables were tested for normal distribution (Appendix S3).<sup>38</sup> Those normally distributed were presented as mean and standard deviation (SD) and compared with one-way ANOVA combined with post hoc Dunnett's multiple comparison test. Continuous variables not normally distributed were expressed as median and interquartile range (IQR) and compared with the Kruskal-Wallis test combined with post hoc Dunn's multiple comparison test.

According to the aforementioned guidelines, p values were interpreted based on the assumptions made at the time of the *a priori* power calculation.<sup>39</sup> In other words, results of the primary outcome were considered significant when they were above the predefined threshold of  $\geq 99\%$  for a sample size of 7 per group and with  $p < 0.05$ . To increase statistical robustness, results of the secondary outcomes were powered a posteriori (80% power and 5% significance level) using either the Fisher's exact test for binary variables or the Sealed Envelope power calculator<sup>40, 41</sup> for continuous variables (www.sealedenvelope.com; superiority study unrepaired vs. watertight two-layer repair). Each secondary outcome was considered significant under three conditions: its p value was  $< 0.05$ , it was well-powered with a retrospective sample size  $\leq 7$  and the primary outcome reached significance.

## RESULTS

### **Models of watertight and non-watertight layered repair of SBA can be established in fetal lambs**

Thirty-seven pregnant ewes with a total of 65 fetuses were included (n=14 singletons, n=19 twins, n=3 triplets and n=1 quadruplets) and only one fetus was operated per ewe. In 37 fetuses, SBA was induced at a median of 75 (IQR=2) days. Ten were left unrepaired and used as controls and 7 survived until term. In 27, repair was done at a median age of 102 (2) days (Figure 1). Watertight and non-watertight repair lambs had similar characteristics prenatally and postnatally, 7 in each group surviving until term (Table 1).

### **Watertight fetal SBA layered repair reverses hindbrain herniation and improves brain histology**

Watertight repair lambs presented with complete reversal of hindbrain herniation [7/7 (100%) vs. 1/7 (14%); p=0.001] and absence of brain hemorrhage or ischemia on MRI as compared to unrepaired SBA lambs (Figure 2AB and Table1). In contrast only 6/7 (86%) of non-watertight repair lambs had complete reversal of hindbrain (non-significant; threshold <99%) with no hemorrhage or ischemic changes on MRI (Figure 2AB). In keeping with the macroscopic findings, histology and immunohistochemistry of the brain showed a higher number of neurons in the hippocampus and corpus callosum of watertight repair lambs, without an increased number of apoptotic cells or GFAP (Glial Fibrillary Acidic Protein) positive astrocytes (Figure 2CF). Conversely, a lower number of neurons in the hippocampus and corpus callosum without decreased apoptotic cells or astrocytes was present in the brain of non-watertight repair lambs, no different to the one observed in unrepaired lambs (Figure 2CF).

### **Watertight fetal SBA layered repair is associated with improvement in spinal cord function and reactive astrogliosis**

At the spinal level, all but one watertight repair lamb had complete skin closure without CSF leakage (Figure 3A-C) and tissue coverage of the defect on MRI was thicker than unrepaired lambs (Figure 3DE). They displayed a milder motor deficit with higher joint movement scores and locomotor grades (Figure 4AB). This was paralleled by a higher area-under-the-curve and peak-to-peak amplitude on MEPs (Figure 4EF). Moreover, watertight repair lambs had a larger area of GFAP positive astrocytes (Figure 4CD). Finally, watertight repair was neuroprotective in 5/7 lambs (Table1). One animal had CSF leakage at birth and one with intact skin had a low motoric function score (Table S1).

On the contrary, nearly half of the non-watertight repair animals had CSF leakage at birth (Figure 3AC) despite greater length (Figure 3B) and thicker tissue coverage of the defect on MRI (Figure 3DE). These lambs displayed a motor deficit with low joint movement scores, locomotor grades (Figure 4A-C) and a low area-under-the-curve and amplitude on MEPs, all within the range of the unrepaired (Figure 4EF). On histology the spinal cord presented with a small area of GFAP positive astrocytes similar to unrepaired animals (Figure 4CD). Overall, non-watertight repair was neuroprotective in only 1/7 lambs (Table1 and Table S1).

### **Statistical interpretation**

Power calculation demonstrated that robust conclusions could only be made about brain hemorrhage and ischemia, number of neurons in the hippocampus and corpus callosum, tissue thickness covering the defect, joint-movement score and loco-motor grade, hindlimb MEPs and area of GFAP positive cells in the spinal cord (Figures 2-4, Table1 and Table S2). All watertight and non-watertight layered repair



lambs displayed ventriculomegaly, abnormal diameters of posterior fossa structures, kyphosis and adhesions between the patch and the spinal cord (Table1 and Table S2).

**Relation between the intraoperative quality score and the watertightness test**

Both watertight layered repair and high quality score were associated with improved outcomes (Table1 and Table S3) as well as neuroprotection since 5/7 animals had a 4/4 neuroprotection score (Table S1). Both tests cannot be used interchangeably since discrepant results were observed for two lambs (Table S1).

## DISCUSSION

### Principal findings

Prenatal SBA repair has become widely adopted in the last decade after the positive outcome of the MOMS trial.<sup>14, 36</sup> While a number of surgical techniques have been adopted and results are difficult to compare, it is believed that watertightness of the fetal SBA layered repair is critical for the neurological outcome.<sup>22-24</sup> We demonstrated in the validated sheep model that watertight layered fetal SBA repair is neuroprotective, as evidenced by a 100% reversal rate of hindbrain herniation, a low CSF leakage rate at repair site, a better hindlimb motor function, a higher neuronal density in the hippocampus and corpus callosum and a larger area of reactive astrocytes at the lesion epicenter. Conversely, non-watertight repair does not achieve the same level of neuroprotection. This confirms the hypothesis that prevention of continuous exposure of the spinal cord and nerves to chemical trauma from the amniotic fluid significantly improves neuromotor function<sup>16, 17</sup>, and arrest of CSF leakage reverses the brain suction gradient causing hindbrain herniation<sup>14, 17</sup>.

### Results in the context of what is known

Previous studies in the fetal lamb model investigated the functional and morphological effects of fetal layered repair, yet did not look at the effects of its watertightness.<sup>20</sup> In those studies, several outcome measures were used to assess the neuroprotective effect of the repair, including reversal of hindbrain herniation<sup>4, 6</sup>, improved lower limb motor function<sup>3, 42, 43</sup>, thickness of the ano-rectal sphincters<sup>44</sup>, or presence of adhesions around the cord as a proxy for spinal cord tethering<sup>45</sup>. To these we added more sophisticated tests, like MEP analysis<sup>33</sup>, quantification of brain neurons and thickness of the detrusor muscle, as well as a functional composite neuroprotection score.

In the MOMS trial, the CSF leakage or dehiscence rate at repair site at birth following open fetal surgery was around 13%.<sup>14</sup> This suggests a persistent open communication in utero prompting local measures after birth and eventually reintervention in 2.6%.<sup>36</sup> Such opening may, next to the postnatal risk of infection, compromise the neuroprotective effect of fetal surgery. Although experts unanimously state that watertight closure is critical<sup>46-51</sup>, to our knowledge the functional consequence of non-watertight versus watertight layered repair has never been quantified, neither has a clinically acceptable method being proposed to test the watertightness of a repair intra-operatively.<sup>48</sup> An indirect test based on the presence or absence of a “bulging patch” was suggested by Kohl.<sup>46</sup> Next to the demonstration of “bulging” by accumulating CSF at the end of the procedure, absence of CSF leakage on provocation, i.e. when compressing the bulging with an instrument, should also be demonstrated.<sup>46</sup> We think the bulging test is clinically impractical for the following reason. The CSF is produced at a rate of maximum 0.37mL/min, independent of the size of a fetus or an infant.<sup>52-55</sup> Under the assumption that a bulging of a 4x3cm patch would be reliably confirmed, e.g. by elevation by 0.5cm, one would need to wait for 11.5min following skin closure. This calculation is based on the volume of CSF needed to fill the distance between untethered cord in the spinal canal and the top of such a bulging patch, roughly two thirds of a cm. This can be represented by a volume of two thirds of ellipsoid of 4x3x1cm in diameter. Finally, this test would only be feasible after a skin patch repair, which is practiced in approximately 20% of cases.<sup>56, 57</sup>

### Clinical implications

In an attempt to find a clinically reliable CSF leakage test at the time of the operation, we investigated the use of an intraoperative quality score as a translational surrogate for the watertightness test. Both test and score were associated with the level of neuroprotection, although they cannot be interchanged because abnormal test and score did not perfectly identify the same animals. If a skin repair would appear to be inappropriate with inter-run distance >3mm, we would add additional suture. In case of insufficient tissue or tear or ischemia we would consider a skin substitute or skin flap – yet not relaxing incisions – to ensure watertightness.<sup>14, 58-60</sup> It would be very interesting to reassess clinical series for the relationship between repair watertightness - defined by an inter-run distance ≤3mm and absence of tear or ischemia - and hindbrain herniation reversal as well as preservation of motor function. Prospectively we would suggest to systematically report on the quality of the repair at the time of surgery, take a picture and correlate it to the clinical outcomes for neuroprotection.

### **Strengths and Limitations**

Our study also has a number of strengths. It followed the international guidelines for animal research and for validation of animal disease models<sup>25, 61, 62</sup> and for improving statistical interpretation and reporting<sup>39</sup>. The experiment was sufficiently powered to determine efficacy. We used a validated animal model for SBA resulting in a complete and homogeneous phenotype.<sup>21</sup> Outcome measures were obtained by experienced observers whenever possible blinded to the treatment groups and only reliable measurements were used.

We are aware of a number of study limitations. One major generic criticism is the nature of surgical models for SBA. The lesion is induced late in gestation hence unable to replicate the primary embryonic defect of the “first” hit, limiting the effects to “second” hit. This adds to other generic objections to the sheep model having different placental structure and unfused fetal membranes.<sup>63</sup> Second, not all lambs in the watertight groups survived until MEP/SEP recordings, leading to incomplete data in those. Nevertheless, surviving lambs were the ones with the worst joint scores and motor grades. We have previously shown that the MEPs amplitude are correlated with the joint score and locomotor grade<sup>21</sup>, so we do not think we overestimated the improvement observed. Finally, this collagen patch induced in all animals in both groups adhesions to the spinal cord. Clinically, this could induce postnatal spinal cord tethering with or without intradural inclusion cyst associated with functional loss.<sup>18, 58, 64, 65</sup> Such collagen patch should therefore be avoided or not be directly applied to the spinal cord.

### **CONCLUSION**

In lambs, watertight two-layer fetal SBA repair is most effective in reversing hindbrain herniation and preserving brain neurons and peripheral neuromotor function. Non-watertight repair has less favorable neuroprotective effects. These translational research findings have direct clinical implications and neurosurgical technique that achieves watertightness should be adopted to improve neuroprotection. They are also of paramount importance to advance the care of fetuses affected by SBA and guide the advancement of fetal surgical techniques.

## **ADDITIONAL INFORMATION**

### **Data availability**

The data that support the findings of this study as well as the custom-made MATLAB algorithm are available from the corresponding authors, upon reasonable request.

### **Acknowledgements**

We are grateful to Wouter Merckx and Stijn Massart from the Zootechnical Institute of the KU Leuven for preparing and caring for the pregnant ewes and to Rosita Kinnart from the Center for Surgical Technologies for her precious help in anesthetizing and animal care. We also thank our KU Leuven colleagues for their technical support: Alexander C. Engels, Savitree Pranpanus, Marjolijn Deprez, Felix de Bie, Laurent Saikali, Katerina Apelt, Sofie Jannes, Katrien Luyten, Lorna Omodho and David Nittner.

### **Author Contributions**

LJ, FVC and JD designed the entire study. LJ performed all surgeries and animal preparations with help of JP, ED, AC Engels and S. Pranpanus. MGMCMC and SDV performed the clinical evaluation of all lambs. MA and PP analyzed the MRI data. M. Deprez and AK. helped recording and interpreting MEPs. The MATLAB algorithm for MEP analysis was developed by AK. AK, MD, and LJ performed MEP analysis using the custom-made algorithm. Histological analysis was done by LJ, JVDM, JP, ED and ER. LJ and JVDM performed statistical analysis of the data. LJ wrote the manuscript with JD. All co-authors approved the study design, revised and approved the final manuscript.

### **Conflicts of Interests**

The authors declare no competing financial interests. The funders had no role in the design of the study; in the collection, analyses, or interpretation of data; in the writing of the manuscript, or in the decision to publish the results.

### **Funding**

LJ is supported by an Innovative Engineering for Health award by the Wellcome Trust (WT101957), the Engineering and Physical Sciences Research Council (EPSRC) (NS/A000027/1) and the Research Foundation – Flanders (FWO) [ZL3953000]. JVDM and JP are funded with support of the Erasmus+ Program of the European Union (Framework Agreement number: 2013-0040). This publication reflects the views only of the author, and the Commission cannot be held responsible for any use which may be made of the information contained therein. JD and PDC are supported by the Great Ormond Street Hospital Charity. PDC is also supported by NIHR Professorship, NIHR UCL Great Ormond Street Biomedical Research Center. The DuraGen Plus patches were generously provided free of charge by Integra Life Science, Plainsboro, NJ, USA.

### **Paper presentation information**

Our translational research was presented at the SMFM 2021 Virtual 41<sup>st</sup> Annual Meeting from January 25 to 30 and received an award for best scientific oral presentation.

## REFERENCES

1. Heffez DS, Aryanpur J, Hutchins GM, Freeman JM. The paralysis associated with myelomeningocele: clinical and experimental data implicating a preventable spinal cord injury. *Neurosurgery* 1990; **26**: 987-992.
2. Stiefel D, Copp AJ, Meuli M. Fetal spina bifida in a mouse model: loss of neural function in utero. *Journal of neurosurgery* 2007; **106**: 213-221.
3. Meuli M, Meuli-Simmen C, Hutchins GM, Yingling CD, Hoffman KM, Harrison MR, Adzick NS. In utero surgery rescues neurological function at birth in sheep with spina bifida. *Nature medicine* 1995; **1**: 342-347.
4. Bouchard S, Davey MG, Rintoul NE, Walsh DS, Rorke LB, Adzick NS. Correction of hindbrain herniation and anatomy of the vermis after in utero repair of myelomeningocele in sheep. *Journal of pediatric surgery* 2003; **38**: 451-458; discussion 451-458.
5. McLone DG, Dias MS. The Chiari II malformation: cause and impact. *Child's nervous system : ChNS : official journal of the International Society for Pediatric Neurosurgery* 2003; **19**: 540-550.
6. Paek BW, Farmer DL, Wilkinson CC, Albanese CT, Peacock W, Harrison MR, Jennings RW. Hindbrain herniation develops in surgically created myelomeningocele but is absent after repair in fetal lambs. *Am J Obstet Gynecol* 2000; **183**: 1119-1123.
7. McLone DG, Knepper PA. The cause of Chiari II malformation: a unified theory. *Pediatric neuroscience* 1989; **15**: 1-12.
8. Korenromp MJ, van Gool JD, Bruinese HW, Kriek R. Early fetal leg movements in myelomeningocele. *Lancet* 1986; **1**: 917-918.
9. Sival DA, Begeer JH, Staal-Schreinemachers AL, Vos-Niel JM, Beekhuis JR, Prechtl HF. Perinatal motor behaviour and neurological outcome in spina bifida aperta. *Early human development* 1997; **50**: 27-37.
10. Sival DA, Guerra M, den Dunnen WF, Batiz LF, Alvial G, Castaneyra-Perdomo A, Rodriguez EM. Neuroependymal denudation is in progress in full-term human foetal spina bifida aperta. *Brain Pathol* 2011; **21**: 163-179.
11. Mitchell LE, Adzick NS, Melchionne J, Pasquariello PS, Sutton LN, Whitehead AS. Spina bifida. *Lancet* 2004; **364**: 1885-1895.
12. Juranek J, Salman MS. Anomalous development of brain structure and function in spina bifida myelomeningocele. *Dev Disabil Res Rev* 2010; **16**: 23-30.
13. Tulipan N, Wellons JC, 3rd, Thom EA, Gupta N, Sutton LN, Burrows PK, Farmer D, Walsh W, Johnson MP, Rand L, Tolivaisa S, D'Alton M E, Adzick NS, Investigators M. Prenatal surgery for myelomeningocele and the need for cerebrospinal fluid shunt placement. *Journal of neurosurgery Pediatrics* 2015; **16**: 613-620.
14. Adzick NS, Thom EA, Spong CY, Brock JW, 3rd, Burrows PK, Johnson MP, Howell LJ, Farrell JA, Dabrowiak ME, Sutton LN, Gupta N, Tulipan NB, D'Alton ME, Farmer DL, Investigators M. A randomized trial of prenatal versus postnatal repair of myelomeningocele. *N Engl J Med* 2011; **364**: 993-1004.

15. Johnson MP, Bennett KA, Rand L, Burrows PK, Thom EA, Howell LJ, Farrell JA, Dabrowiak ME, Brock JW, 3rd, Farmer DL, Adzick NS, Management of Myelomeningocele Study I. The Management of Myelomeningocele Study: obstetrical outcomes and risk factors for obstetrical complications following prenatal surgery. *Am J Obstet Gynecol* 2016; **215**: 778 e771-778 e779.
16. Farmer DL, Thom EA, Brock JW, 3rd, Burrows PK, Johnson MP, Howell LJ, Farrell JA, Gupta N, Adzick NS, Management of Myelomeningocele Study I. The Management of Myelomeningocele Study: full cohort 30-month pediatric outcomes. *Am J Obstet Gynecol* 2018; **218**: 256 e251-256 e213.
17. Adzick NS. The tribulations and trials of fetal surgery for spina bifida. *Proceedings of the American Philosophical Society* 2013; **157**: 409-437.
18. Belfort MA, Whitehead WE, Shamshirsaz AA, Espinoza J, Nassr AA, Lee TC, Olutoye OO, Keswani SG, Sanz Cortes M. Comparison of two fetoscopic open neural tube defect repair techniques: single- vs three-layer closure. *Ultrasound in obstetrics & gynecology : the official journal of the International Society of Ultrasound in Obstetrics and Gynecology* 2020; **56**: 532-540.
19. Flanders TM, Madsen PJ, Pisapia JM, Hudgins ED, Mackell CM, Alexander EE, Moldenhauer JS, Zarnow DM, Flake AW, Adzick NS, Heuer GG. Improved Postoperative Metrics with Modified Myofascial Closure in Fetal Myelomeningocele Repair. *Oper Neurosurg (Hagerstown)* 2020; **18**: 158-165.
20. Joyeux L, De Bie F, Danzer E, Van Mieghem T, Flake AW, Deprest J. Safety and efficacy of fetal surgery techniques to close a spina bifida defect in the fetal lamb model: A systematic review. *Prenatal diagnosis* 2018; **38**: 231-242.
21. Joyeux L, Engels AC, Van Der Merwe J, Aertsen M, Patel PA, Deprez M, Khatoun A, Pranpanus S, da Cunha M, De Vleeschauwer S, Parra J, Apelt K, Laughlin MM, Van Calenbergh F, Radaelli E, Deprest J. Validation of the Fetal Lamb Model of Spina Bifida. *Scientific reports* 2019; **9**: 9327.
22. Belfort M, Deprest J, Hecher K. Current controversies in prenatal diagnosis 1: in utero therapy for spina bifida is ready for endoscopic repair. *Prenatal diagnosis* 2016; **36**: 1161-1166.
23. Verweij EJ, de Vries MC, Oldekamp EJ, Eggink AJ, Oepkes D, Slaghekke F, Spoor JKH, Deprest JA, Miller JL, Baschat AA, DeKoninck PLJ. Fetoscopic myelomeningocele closure: is the scientific evidence enough to challenge the gold standard for prenatal surgery? *Prenatal diagnosis* 2021. DOI: 10.1002/pd.5940.
24. Sanz Cortes M, Chmait RH, Lapa DA, Belfort MA, Carreras E, Miller JL, Brawura Biskupski Samaha R, Sepulveda Gonzalez G, Gielchinsky Y, Yamamoto M, Persico N, Santorum M, Otano L, Nicolaou E, Yinon Y, Faig-Leite F, Brandt R, Whitehead W, Maiz N, Baschat A, Kosinski P, Nieto-Sanjuanero A, Chu J, Kershenovich A, Nicolaidis KH. Experience of 300 cases of prenatal fetoscopic open spina bifida repair: Report of the International Fetoscopic Neural Tube Defect Repair Consortium. *Am J Obstet Gynecol* 2021. DOI: 10.1016/j.ajog.2021.05.044.
25. Kilkenny C, Browne WJ, Cuthill IC, Emerson M, Altman DG. Improving bioscience research reporting: the ARRIVE guidelines for reporting animal research. *PLoS biology* 2010; **8**: e1000412.
26. NC3Rs. Conducting a pilot study. <https://www.nc3rs.org.uk/conducting-pilot-study#data> [Accessed 21 october 2016].

27. Kiefer C, Sturtz S, Bender R. Indirect Comparisons and Network Meta-Analyses. *Dtsch Arztebl Int* 2015; **112**: 803-808.
28. Adelman DM, Selber JC, Butler CE. Bovine versus Porcine Acellular Dermal Matrix: A Comparison of Mechanical Properties. *Plast Reconstr Surg Glob Open* 2014; **2**: e155.
29. Narotam PK, Jose S, Nathoo N, Taylon C, Vora Y. Collagen matrix (DuraGen) in dural repair: analysis of a new modified technique. *Spine* 2004; **29**: 2861-2867; discussion 2868-2869.
30. Danish SF, Samdani A, Hanna A, Storm P, Sutton L. Experience with acellular human dura and bovine collagen matrix for duraplasty after posterior fossa decompression for Chiari malformations. *Journal of neurosurgery* 2006; **104**: 16-20.
31. Prosser JD, Vender JR, Solares CA. Traumatic cerebrospinal fluid leaks. *Otolaryngologic clinics of North America* 2011; **44**: 857-873, vii.
32. Avery RA, Shah SS, Licht DJ, Seiden JA, Huh JW, Boswinkel J, Ruppe MD, Chew A, Mistry RD, Liu GT. Reference range for cerebrospinal fluid opening pressure in children. *N Engl J Med* 2010; **363**: 891-893.
33. Joyeux L, Deprez M, Khatoun A, Van Kuyck K, Pelsmaekers K, Engels AC, Wang H, Monteiro Carvalho Mori da Cunha MG, De Vleeschauwer S, Mc Laughlin M, Deprest J. Quantitative analysis of motor evoked potentials in the neonatal lamb. *Scientific reports* 2017; **7**: 16095.
34. De Lahunta A, Glass EN, Kent M. *Veterinary Neuroanatomy and Clinical Neurology* (3rd edition edn). Saunders, Elsevier Inc.: St. Louis, Missouri, USA, 2009; chap 5, p. 83-85 - chap 11, p. 285-318.
35. Brown EG, Keller BA, Pivetti CD, Sitkin NA, Wang A, Farmer DL, Bresnahan JC. Development of a locomotor rating scale for testing motor function in sheep. *Journal of pediatric surgery* 2015; **50**: 617-621.
36. Joyeux L, De Bie F, Danzer E, Russo FM, Javaux A, Peralta CFA, De Salles AAF, Pastuszka A, Olejek A, Van Mieghem T, De Coppi P, Moldenhauer J, Whitehead WE, Belfort MA, Lapa DA, Acacio GL, Devlieger R, Hirose S, Farmer DL, Van Calenbergh F, Adzick NS, Johnson MP, Deprest J. Learning curves of open and endoscopic fetal spina bifida closure: systematic review and meta-analysis. *Ultrasound in obstetrics & gynecology : the official journal of the International Society of Ultrasound in Obstetrics and Gynecology* 2020; **55**: 730-739.
37. Fearmonti R, Bond J, Erdmann D, Levinson H. A review of scar scales and scar measuring devices. *Eplasty* 2010; **10**: e43.
38. D'Agostino RB. Tests for Normal Distribution. In *Goodness-of-fit-techniques*, vol 68 D'Agostino RB, Stephens MA (eds). Macel Dekker, CRC press: New York, USA, 1986.
39. Greenland S, Senn SJ, Rothman KJ, Carlin JB, Poole C, Goodman SN, Altman DG. Statistical tests, P values, confidence intervals, and power: a guide to misinterpretations. *Eur J Epidemiol* 2016; **31**: 337-350.
40. Kim J, Seo BS. How to calculate sample size and why. *Clin Orthop Surg* 2013; **5**: 235-242.
41. Sealed Envelope L. Power calculator for continuous outcome superiority trial. <https://www.sealedenvelope.com/power/continuous-superiority/> [Accessed Feb 28 2020].

42. Meuli M, Meuli-Simmen C, Yingling CD, Hutchins GM, Timmel GB, Harrison MR, Adzick NS. In utero repair of experimental myelomeningocele saves neurological function at birth. *Journal of pediatric surgery* 1996; **31**: 397-402.
43. Meuli M, Meuli-Simmen C, Yingling CD, Hutchins GM, Hoffman KM, Harrison MR, Adzick NS. Creation of myelomeningocele in utero: a model of functional damage from spinal cord exposure in fetal sheep. *Journal of pediatric surgery* 1995; **30**: 1028-1032; discussion 1032-1023.
44. Yoshizawa J, Sbragia L, Paek BW, Sydorak RM, Yamazaki Y, Harrison MR, Farmer DL. Fetal surgery for repair of myelomeningocele allows normal development of the rectum in sheep. *Pediatric surgery international* 2003; **19**: 162-166.
45. Sanchez e Oliveira Rde C, Valente PR, Abou-Jamra RC, Araujo A, Saldiva PH, Pedreira DA. Biosynthetic cellulose induces the formation of a neoduramater following pre-natal correction of meningomyelocele in fetal sheep. *Acta cirurgica brasileira / Sociedade Brasileira para Desenvolvimento Pesquisa em Cirurgia* 2007; **22**: 174-181.
46. Kohl T. Percutaneous minimally invasive fetoscopic surgery for spina bifida aperta. Part I: surgical technique and perioperative outcome. *Ultrasound in obstetrics & gynecology : the official journal of the International Society of Ultrasound in Obstetrics and Gynecology* 2014; **44**: 515-524.
47. Pedreira DA, Reece EA, Chmait RH, Kontopoulos EV, Quintero RA. Fetoscopic repair of spina bifida: safer and better? *Ultrasound in obstetrics & gynecology : the official journal of the International Society of Ultrasound in Obstetrics and Gynecology* 2016; **48**: 141-147.
48. Kabagambe SK, Jensen GW, Chen YJ, Vanover MA, Farmer DL. Fetal Surgery for Myelomeningocele: A Systematic Review and Meta-Analysis of Outcomes in Fetoscopic versus Open Repair. *Fetal diagnosis and therapy* 2018; **43**: 161-174.
49. Adzick NS. Fetal surgery for myelomeningocele: trials and tribulations. Isabella Forshall Lecture. *Journal of pediatric surgery* 2012; **47**: 273-281.
50. Ewing DC, Dempsey R, Belfort MA, Olutoye OO, Whitehead WE, Hollier LH, Jr., Buchanan EP. An Unreported Complication After Fetoscopic Myelomeningocele Closure. *J Craniofac Surg* 2019; **30**: 578-580.
51. Botelho RD, Imada V, Rodrigues da Costa KJ, Watanabe LC, Rossi Junior R, De Salles AAF, Romano E, Peralta CFA. Fetal Myelomeningocele Repair through a Mini-Hysterotomy. *Fetal diagnosis and therapy* 2017; **42**: 28-34.
52. Rubin RC, Henderson ES, Ommaya AK, Walker MD, Rall DP. The production of cerebrospinal fluid in man and its modification by acetazolamide. *Journal of neurosurgery* 1966; **25**: 430-436.
53. Cutler RW, Page L, Galicich J, Watters GV. Formation and absorption of cerebrospinal fluid in man. *Brain : a journal of neurology* 1968; **91**: 707-720.
54. Brinker T, Stopa E, Morrison J, Klinge P. A new look at cerebrospinal fluid circulation. *Fluids and barriers of the CNS* 2014; **11**: 10.
55. Lorenzo AV, Page LK, Watters GV. Relationship between cerebrospinal fluid formation, absorption and pressure in human hydrocephalus. *Brain : a journal of neurology* 1970; **93**: 679-692.
56. Moldenhauer JS, Soni S, Rintoul NE, Spinner SS, Khalek N, Martinez-Poyer J, Flake AW, Hedrick HL, Peranteau WH, Rendon N, Koh J, Howell LJ, Heuer GG, Sutton LN, Johnson MP, Adzick



NS. Fetal myelomeningocele repair: the post-MOMS experience at the Children's Hospital of Philadelphia. *Fetal diagnosis and therapy* 2015; **37**: 235-240.

57. Lapa Pedreira DA, Acacio GL, Goncalves RT, Sa RAM, Brandt RA, Chmait RH, Kontopoulos EV, Quintero RA. Percutaneous fetoscopic closure of large open spina bifida using a bilaminar skin substitute. *Ultrasound in obstetrics & gynecology : the official journal of the International Society of Ultrasound in Obstetrics and Gynecology* 2018; **52**: 458-466.

58. Heuer GG, Adzick NS, Sutton LN. Fetal myelomeningocele closure: technical considerations. *Fetal diagnosis and therapy* 2015; **37**: 166-171.

59. Belfort MA, Whitehead WE, Shamshirsaz AA, Bateni ZH, Olutoye OO, Olutoye OA, Mann DG, Espinoza J, Williams E, Lee TC, Keswani SG, Ayres N, Cassady CI, Mehollin-Ray AR, Sanz Cortes M, Carreras E, Peiro JL, Ruano R, Cass DL. Fetoscopic Open Neural Tube Defect Repair: Development and Refinement of a Two-Port, Carbon Dioxide Insufflation Technique. *Obstetrics and gynecology* 2017; **129**: 734-743.

60. Meuli M, Meuli-Simmen C, Mazzone L, Tharakan SJ, Zimmermann R, Ochsenbein N, Moehrlen U. In utero Plastic Surgery in Zurich: Successful Use of Distally Pedicled Random Pattern Transposition Flaps for Definitive Skin Closure during Open Fetal Spina Bifida Repair. *Fetal diagnosis and therapy* 2018; **44**: 173-178.

61. Committee for Medicinal Products for Human Use C. Strategies to identify and mitigate risks for first-in-human and early clinical trials with investigational medicinal products.(EMA) EMA (ed). European Medicines Agency: London, UK, 2017; 1-12.

62. FDA. Guidance for Industry Animal Models – Essential Elements to Address Efficacy Under the Animal Rule.Administration UFaD (ed). US Department of Health and Human Services - Center for Drug Evaluation and Research (CDER) - Center for Biologics Evaluation and Research (CBER) Silver Spring, MD, USA, 2009.

63. Barry JS, Anthony RV. The pregnant sheep as a model for human pregnancy. *Theriogenology* 2008; **69**: 55-67.

64. Danzer E, Thomas NH, Thomas A, Friedman KB, Gerdes M, Koh J, Adzick NS, Johnson MP. Long-term neurofunctional outcome, executive functioning, and behavioral adaptive skills following fetal myelomeningocele surgery. *Am J Obstet Gynecol* 2016; **214**: 269 e261-269 e268.

65. Heye P, Moehrlen U, Mazzone L, Weil R, Altermatt S, Wille DA, Scheer I, Meuli M, Horst M. Inclusion Cysts after Fetal Spina Bifida Repair: A Third Hit? *Fetal diagnosis and therapy* 2019; **46**: 38-44.

## LEGENDS OF FIGURES AND TABLES

### Figure 1 – Experiment timeline and study groups in the SBA fetal lamb model.

At ~75 days of gestation, surgical induction of SBA with myelotomy (arrow).

At ~100 days, absence of SBA repair (unrepaired SBA group) or SBA non-watertight (leakage of injected fluoresceine via a subcutaneous microcatheter) or watertight (absence of leakage) repair.

The surgical repair steps are: (1) Circumferential incision medially to the junction line between the abnormal and normal skin, circumferential resection of the junction line without touching the normal skin, circumferential skin undermining for  $\geq 2$ cm and circumferential incision around the placode simulating untethering; (2) first layer of the repair using a bovine collagen dural patch (DuraGen Plus matrix, Integra Life Sciences, Plainsboro, NJ, USA) trimmed to cover the placode with an additional 1cm margin, and sutured at the four corners; (3) second layer of native skin closed with two half running sutures. *Artistic drawings of fetal lamb in the uterine cavity by Christine Bouguet-Joyeux and in transversal plane by Myrthe Boymans (www.myrtheboymans.nl) for and copyright by UZ Leuven, Belgium. (SBA, spina bifida aperta)*

**Figure 2 – Brain findings at birth.** Comparison between unrepaired SBA, nWT and WT fetal repair groups reporting p value of SBA vs. nWT and SBA vs. WT repair. **(A)** Complete reversal of hindbrain herniation assessed on **(B)** MRI mid-sagittal images (14% (1/7) vs. 86% (6/7) [ $p > 0.05$ ] or vs. 100% (7/7) [ $p = 0.001^{**}$ ]) where the stars pinpoint the hindbrain and the bars the foramen magnum; **(C)** Densities of Nissl-stained neurons in six clinically relevant regions of interest, significantly different in the hippocampus ( $1023 \pm 170$  vs.  $1183 \pm 118$  [ $p = 0.246$ ] or vs.  $1445 \pm 216$  [ $p = 0.004^{**}$ ]); and the corpus callosum ( $479 \pm 141$  vs.  $661 \pm 79$  [ $p = 0.085$ ] or vs.  $712 \pm 178$  [ $p = 0.038^{*}$ ]); **(D)** Representative fields from Nissl-stained brain slides (arrows showing neurons); **(E)** Densities of NeuN, Caspase and GFAP positive cells in two main brain regions: in the hippocampus with NeuN density of  $711 \pm 102$  vs.  $812 \pm 37$  [ $p = 0.455$ ] or vs.  $1034 \pm 189$  [ $p = 0.010^{*}$ ], Caspase density of 1.0 (8.3) vs. 2.5 (27.8) [ $p = 1.000$ ] or vs. 5.5 (2.3) [ $p = 0.430$ ] and GFAP density of  $293 \pm 119$  vs.  $180 \pm 71$  [ $p = 0.179$ ] or vs.  $173 \pm 66$  [ $p = 0.152$ ]; and in the corpus callosum with NeuN density of  $279 \pm 58$  vs.  $326 \pm 77$  [ $p = 0.701$ ] or vs.  $561 \pm 126$  [ $p = 0.004^{**}$ ], Caspase density of 1.5 (1.8) vs. 0.0 (75.0) [ $p = 1.000$ ] or vs. 4.5 (12.0) [ $p = 0.719$ ] and GFAP density of  $275 \pm 129$  vs.  $241 \pm 101$  [ $p = 0.877$ ] or vs.  $149 \pm 108$  [ $p = 0.248$ ]. **(F)** Representative fields from immunostained brain slides (arrows showing NeuN positive green cells with few Caspase-3 positive red cells). *Abbreviations: SBA, spina bifida aperta; MRI, magnetic resonance imaging; HH, hindbrain herniation; HipC, hippocampus; CA1, Cornu Ammonis 1, first of the four regions of the hippocampus; CC, corpus callosum; GFAP, glial fibrillary acidic protein. Significance: \*  $0.01 < p \leq 0.05$ ; \*\*  $0.001 < p \leq 0.01$ .*

**Figure 3 - Spinal cord structural findings at birth.** Comparison between unrepaired SBA, nWT and WT fetal repair groups reporting p value of SBA vs. nWT and SBA vs. WT repair. **(A)** Pictures of unrepaired SBA and nWT and WT fetal repair lambs; **(B)** Size of skin defect in length ( $7.3 \pm 1.4$  mm vs.  $14.1 \pm 3.0$  [ $p < 0.001^{****}$ ] or vs.  $9.3 \pm 1.7$  [ $p = 0.101$ ]) and width ( $3.0$  (4.0) mm vs.  $0.0$  (0.5) [ $p = 0.003^{**}$ ] or vs.  $0.0$  (0.0) [ $p < 0.001^{***}$ ]); **(C)** Absence of CSF leakage at repair site (0% (0/7) vs. 57% (4/7)

[p=0.076] or vs. 86% (6/7) [p=0.007\*\*]; **(D)** Thickness of tissue covering the defect (0.0 (1.1) mm vs. 2.0 (1.1) [p=0.010\*] or vs. 1.7 (1.5) [p=0.006\*\*]) on **(E)** sagittal MRI images (arrows showing the absence or presence of tissue): *Abbreviations: SBA, spina bifida aperta, nWT, non-watertight repair; WT, watertight repair; CSF, cerebrospinal fluid. Significance: \* 0.01<p≤0.05; \*\* 0.001<p≤0.01; \*\*\* 0.0001<p≤0.0001; \*\*\*\* p≤0.0001.*

**Figure 4 – Spinal cord and nerve function at birth.** Comparison between unrepaired SBA, nWT and WT fetal repair groups reporting p value of SBA vs. nWT and SBA vs. WT repair.

**(A)** Neurological examination of the hindlimbs of the lambs; **(B)** Locomotor rating by joint movement score ( $3.2 \pm 2.2$  vs.  $7.0 \pm 4.4$  [p=0.130] or vs.  $9.3 \pm 4.1$  [p=0.017\*]) and locomotor grade ( $1.4 \pm 0.7$  vs.  $2.8 \pm 1.7$  [p=0.208] or vs.  $4.2 \pm 2.2$  [p=0.012\*]); **(C)** Area of GFAP, b3T and MBP positive cells on immunohistochemistry slides of the spinal cord; **(D)** images of significant results from the GFAP positive astrocytes ( $7.03 \pm 3.85 \times 10^6$  pixels vs.  $6.11 \pm 1.92$  [p=0.977] or vs.  $19.52 \pm 16.26$  [p=0.049\*]); **(E)** Area-Under-the-Curve ( $3.5 \pm 3.5$  vs.  $5.1 \pm 4.3$  [p=0.765] or vs.  $11.8 \pm 10.3$  [p=0.020\*]) and Peak-to-Peak amplitude ( $0.08 \pm 0.07$   $\mu$ volts vs.  $0.13 \pm 0.11$  [p=0.462] or vs.  $0.24 \pm 0.17$  [p=0.025\*]) as determined by quantitative Motor Evoked Potentials (MEP) of the hindlimbs; **(F)** Display of MEP recordings for each group. *Abbreviations: SBA, spina bifida aperta, nWT, non-watertight repair; WT, watertight repair; GFAP, glial fibrillary acidic protein; b3T, beta-3-tubulin; MBP, myelin binding protein. Significance: \* 0.01<p≤0.05; \*\* 0.001<p≤0.01; \*\*\* 0.0001<p≤0.0001; \*\*\*\* p≤0.0001.*

**Appendix S1 - Experimental animals and procedures**

**Appendix S2 - Outcome measures**

**Appendix S3 - Statistical methods**

**Table 1 – Characteristics and outcomes of unrepaired vs. non-watertight or watertight repaired SBA.** Abbreviations: SBA, spina bifida aperta; WT, watertight; nWT, non WT; MRI, magnetic resonance imaging; NA, non-applicable. Significance: \* 0.01<p≤0.05; \*\* 0.001<p≤0.01; \*\*\* 0.0001<p≤0.0001; \*\*\*\* p≤0.0001.

Groups	Unrepaired SBA	nWT fetal repair	P value	WT fetal repair	P value
<b>Characteristics</b>					
<b>Prenatally</b>					
Gestational Age at induction (days)	N=10 75 (1)	N=19 75 (2)	0.122	N=8 74 (0)	0.770
Gestational Age at repair (days)	NA	N=11 103 (2)	NA	N=7 102 (0)	0.364
<b>Postnatally</b>					
Survival at birth	N=7 70% (7/10)	N=7 64% (7/11)	0.877	N=7 100% (7/7)	0.342
Birth weight (Kg)	3.5 ± 0.8	3.9 ± 0.8	0.598	3.3 ± 0.8	0.820
<b>Primary Outcome</b>					
Reversal of HH on MRI	14% (1/7)	86% (6/7)	>0.05	100% (7/7)	<b>0.001**</b>
<b>Secondary outcomes</b>					
<b>Brain</b>					
<b>MRI</b>					
Hemorrhage	0% (0/7)	0% (0/7)	1.000	0% (0/7)	1.000
Ischemia	0% (0/7)	0% (0/7)	1.000	14% (1/7)	1.000
<b>Spinal cord</b>					
<b>Histology</b>					
Adhesions between patch & spinal cord	NA	100% (7/7)	NA	100% (7/7)	NA
<b>Overall neuroprotection</b>					
Neuroprotection (score 4/4)	0% (0/7)	14% (1/7)	1.000	<b>71% (5/7)</b>	0.026*

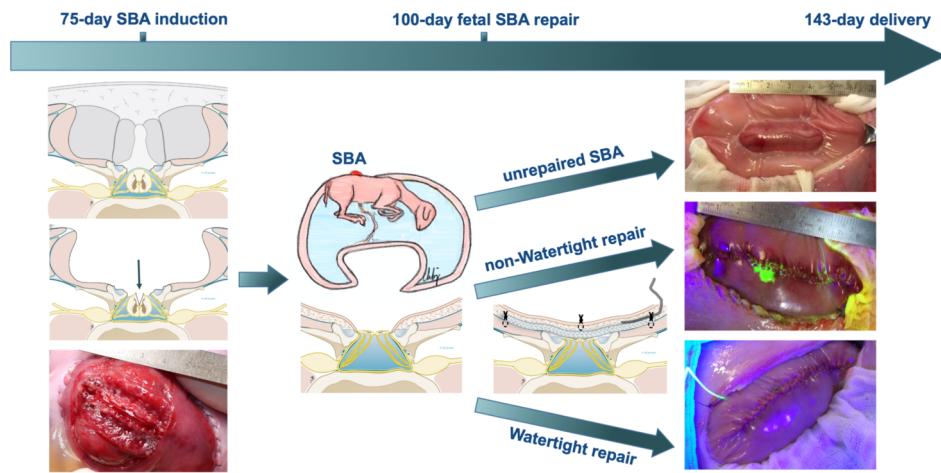


Fig 1-experiment timeline.tiff

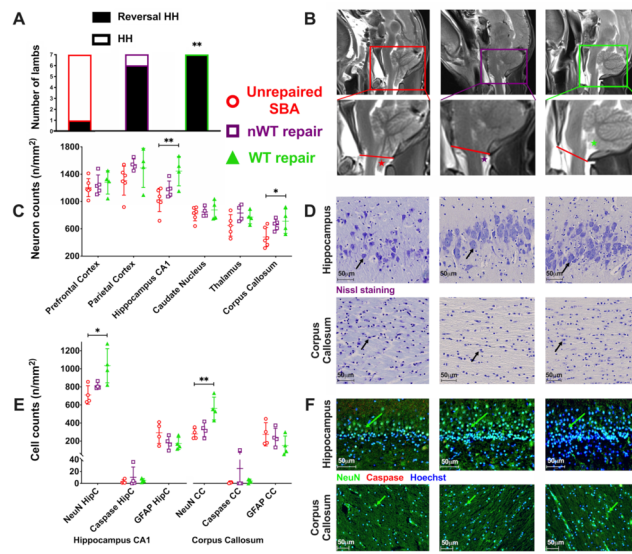


Fig 2-Brain structure.tiff

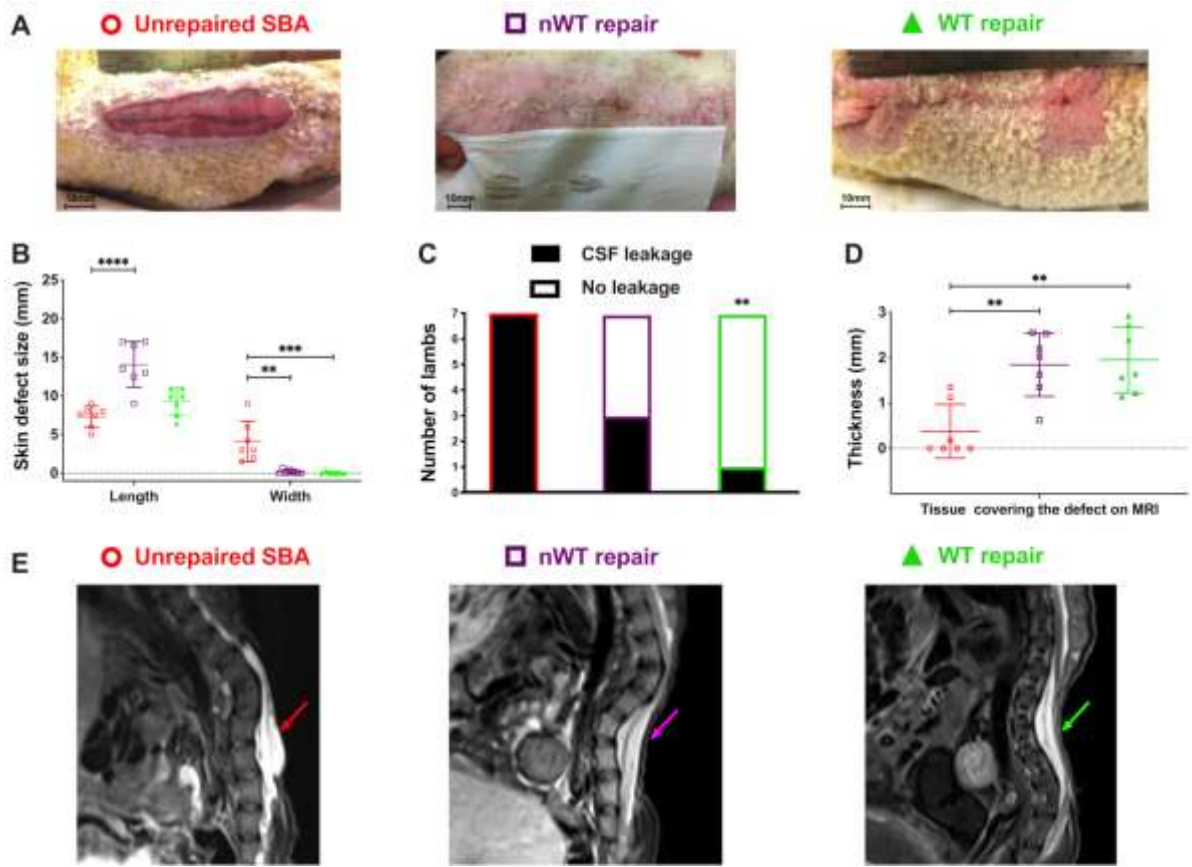


Fig 3-SC structure.tiff

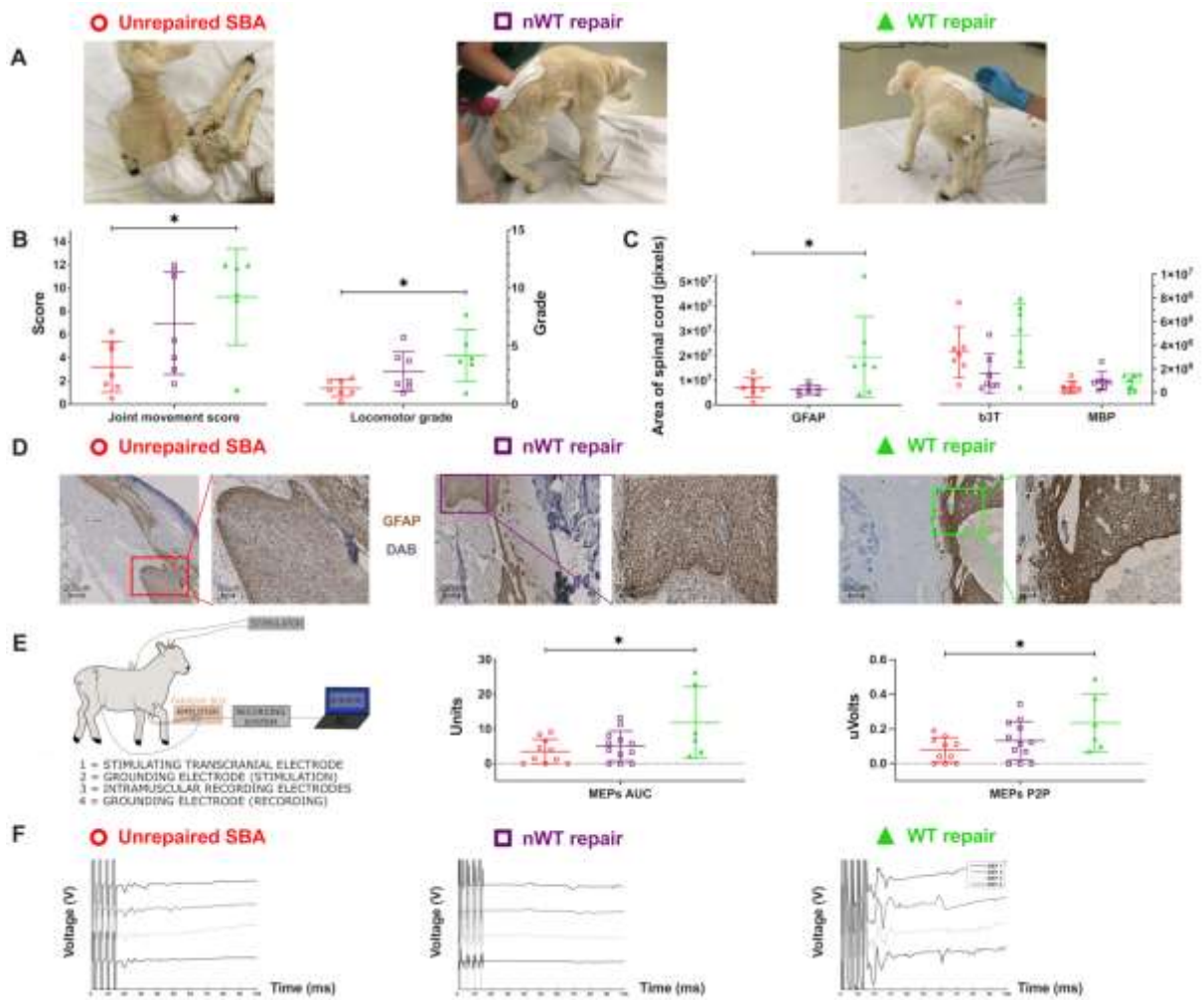


Fig 4-SC motor function.tiff