



The perils of contact sport: pathologies of diffuse brain swelling and chronic traumatic encephalopathy neuropathologic change in a 23-year-old rugby union player

Edward B. Lee¹ · Claire Kennedy-Dietrich² · Jennian F. Geddes³ · James A. R. Nicoll⁴ · Tamas Revesz⁵ · Douglas H. Smith⁶ · William Stewart^{2,7} 

Received: 28 March 2023 / Revised: 13 April 2023 / Accepted: 16 April 2023
© The Author(s) 2023

There is increasing awareness of the consequences of traumatic brain injury (TBI) and repetitive head impact exposure (RHI) in contact sport, largely driven by greater recognition of chronic traumatic encephalopathy neuropathologic change (CTE-NC) [6, 12, 13]. Nevertheless, prior to consensus criteria for the neuropathological assessment of CTE-NC [1, 9], there were isolated cases and short case series documenting neurodegenerative pathologies in former contact sports athletes. Included among these were reports of hyperphosphorylated tau pathologies suggestive of CTE-NC in autopsy studies of relatively young individuals with RHI exposures [4]. Here we re-examine one such example, Case 5 in Geddes et al., 1999 [4], employing current neuropathological consensus criteria and informed by clinical history obtained via contemporary next of kin interview.

A 23-year-old, male, elite rugby union player was knocked unconscious while tackling an opponent. He was attended to on the field, rapidly regained consciousness and

returned to the match in the next play before reporting symptoms of headache, collapsing, and becoming unresponsive. He was immediately transferred to hospital, where he was breathing spontaneously, with a Glasgow Coma Scale of 4 out of 15, a pulse of 120 beats per minute and blood pressure 206/120 mmHg. His pupils were fixed and dilated and he had bilateral up-going plantars. CT scan demonstrated loss of gray/white matter definition, with a small right-sided subdural hematoma (SDH). Intracranial pressures were recorded at 90 mmHg. He was managed conservatively but continued to decline to his death just over 24 h from injury.

His history was remarkable for frequent rugby-associated head injuries, estimated up to 3 concussions with loss of consciousness per season. Most notably, shortly prior to this admission, he sustained a concussion with brief ('seconds') loss of consciousness, leading to his removal from the field of play. He reported no symptoms following the match, returned to training as normal in the days thereafter and played his next competitive game 10 days later (his final match). He had no history of health problems, was a post-graduate student and reported no history of altered behavior or mental health disorder. He was a keen athlete, but never participated in combat sports or soccer, drank socially, was a non-smoker and there was no known history of non-prescribed drug use or TBI outside of rugby.

At autopsy, thin film, right convexity SDH was confirmed (approximately 10 ml). Evidence of diffuse brain swelling was present, without measurable midline shift. However, there was evidence of internal herniation with displacement of the medial temporal lobes and cerebellar tonsils and central pontine hemorrhage. Cavum septum pellucidum was present (up to 2 mm anteriorly; Fig. 1a). The original diagnostic histological sections were reviewed, to which were added additional tissue samples and immunocytochemistry for amyloid precursor protein (22C11; APP) and for hyperphosphorylated tau (p-tau; PHF-1), amyloid-beta

✉ William Stewart
william.stewart@glasgow.ac.uk

¹ Translational Neuropathology Research Laboratory, University of Pennsylvania, Philadelphia, PA 19104, USA

² School of Psychology and Neuroscience, University of Glasgow, Glasgow G12 8QQ, UK

³ (Formerly) Queen Mary, University of London, London, UK

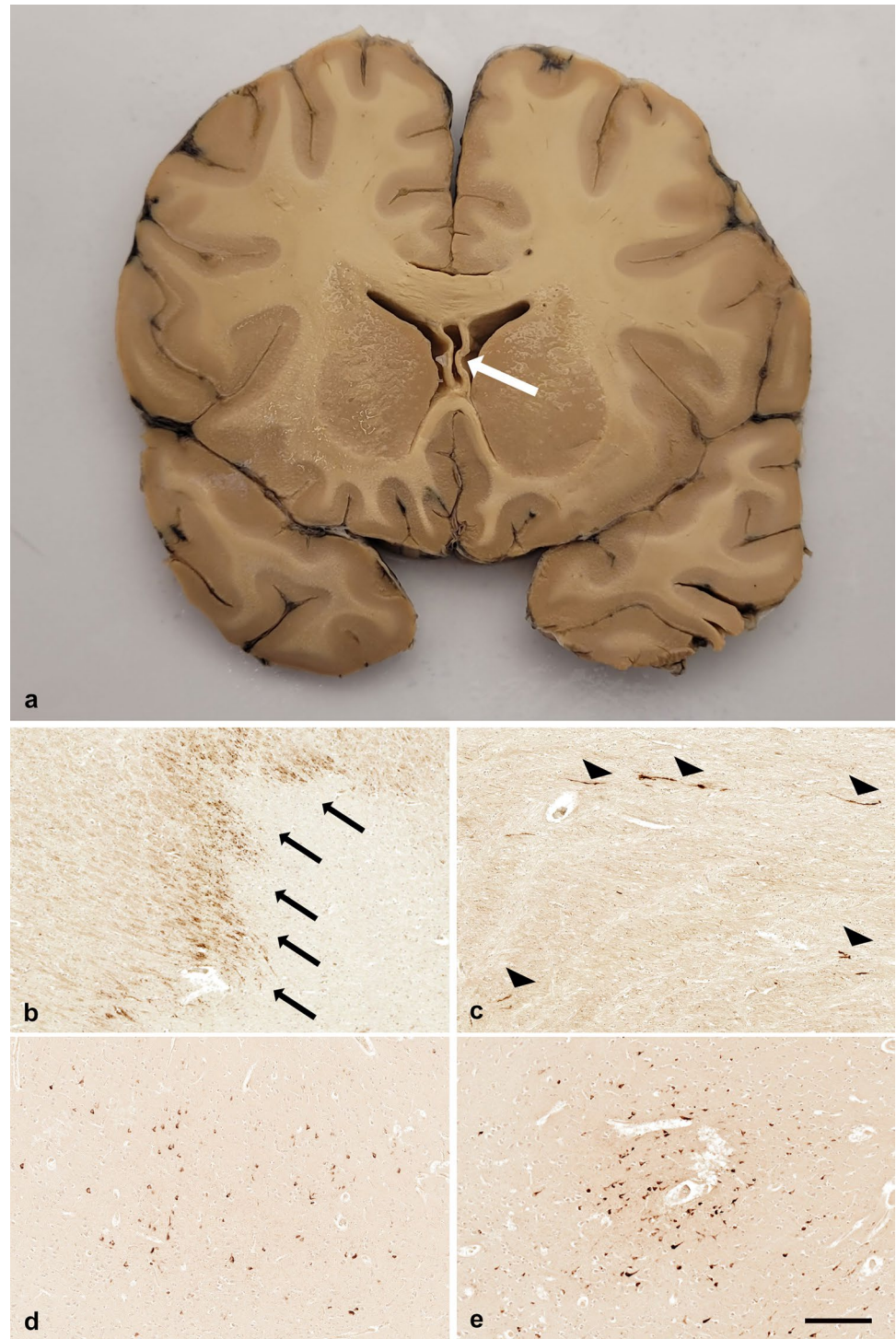
⁴ Clinical Neurosciences, University of Southampton, Southampton SO16 6YD, UK

⁵ Queen Square Brain Bank for Neurological Disorders, UCL Queen Square Institute of Neurology, University College London, London WC1N 3BG, UK

⁶ Department of Neurosurgery, Penn Center for Brain Injury and Repair, Perelman School of Medicine, University of Pennsylvania, Philadelphia, PA 19104, USA

⁷ Department of Neuropathology, Queen Elizabeth University Hospital, 1345 Govan Rd, Glasgow G51 4TF, UK

Fig. 1 a Examination of the brain revealed evidence of diffuse brain swelling, with ventricular effacement but no measurable midline shift. Cavum septum pellucidum was present (white arrow). On microscopy, waves of punctate to granular APP-immunoreactive axons were present consistent with the vascular complications of raised intracranial pressure (**b**, arrows), in addition to scattered linear and fusiform axonal profiles with the stereotypical appearance and distribution of DAI (**c**, arrowheads). Multiple patchy foci of p-tau-immunoreactive neuronal profiles were present within the neocortex, typically at sulcal depths (**d**) with, in several locations, perivascular clustering of p-tau-immunoreactive neurons consistent with the pathognomonic lesion of CTE-NC (**e**). Scale bar 250 μ m **b–e**



(6f3d), alpha-synuclein (KM51), and phosphorylated TDP-43 (1D3), in line with consensus criteria for evaluation of CTE-NC [1, 9].

Sections stained for APP revealed immunoreactive axons in two distinct patterns. In and around the deep gray nuclei and surrounding the hemorrhagic focus in the pons, waves of APP-immunoreactive axons typical of the vascular

complications of raised intracranial pressure were present (Fig. 1b) [10]. Elsewhere, within the corpus callosum and internal capsule, frequent, scattered, linear, and fusiform APP-immunoreactive axons were present, in keeping with diffuse traumatic axonal injury (DAI; Fig. 1c) [5]. Staining for p-tau revealed numerous foci of neurofibrillary tangles and scattered neurites, typically in mid-cortical layers at the

depths of sulci and adjacent sulcal margins, and extending to both superficial and, less so, deeper layers (Fig. 1d). In multiple locations, these showed stereotypical, pathognomonic appearances of CTE-NC, including perivascular clustering (Fig. 1e). Occasional p-tau immunoreactive neurons were identified in the amygdala, consistent with low-stage CTE-NC [1]. No other supportive neuronal or astroglial p-tau pathologies were observed. Stains for amyloid-beta, alpha-synuclein, and phosphorylated TDP-43 were negative.

Regarding acute TBI, the clinical presentation and neuropathology were of rapid-onset, severe, diffuse brain swelling with small volume SDH, insignificant midline shift and DAI which, in context of the history of mild TBI 10 days prior to this event, might be interpreted as consistent with second impact syndrome [2, 14]. Rapid, diffuse brain swelling leading to fatal outcome is an exceptionally rare event following mild TBI. Typically encountered in adolescents and young adults, often there is history of injury in the preceding days, hence the commonly used term second impact syndrome [2]. However, whether recent TBI is necessary or simply coincident is uncertain [3]. Nevertheless, sports concussion management is intended to mitigate risk of such adverse outcomes, with immediate removal from play for any suspected concussion, followed by a graduated return to sport [7].

Over and above acute TBI pathology, examination informed by current consensus criteria revealed multiple foci of p-tau immunoreactive neuronal profiles in stereotypical pattern and distribution of CTE-NC [1, 9]. Notably, this pathology was not observed in the original, thorough, diagnostic work-up and research reporting of this case [4]. As such, this re-appraisal of available archival materials underlines the utility of published consensus criteria for the neuropathological evaluation of CTE. To date, the only documented risk factor for CTE-NC is exposure to RHI or a single moderate or severe TBI [9, 12]. Long recognized as a neurodegenerative disease associated with boxers, our and others' experience from autopsy studies demonstrates CTE-NC present in around 75% of former contact sports athletes with dementia [6], with epidemiological data revealing high neurodegenerative disease risk among former elite rugby players [11].

There have been only isolated autopsy studies of young athletes reporting evidence of CTE-NC [8]. To date, however, none with RHI/TBI exclusively through rugby union. This observation provides evidence of established neurodegenerative pathology in early life, active, contact sports participants, in advance of any recognizable clinical manifestation. Detection of CTE-NC at such young age supports the hypothesis that the processes driving TBI-related neurodegeneration are established many years prior to clinical presentation, reinforcing calls to limit exposure to sports-associated RHI and TBI.

Acknowledgements This work is supported by funding from: the *National Institute of Neurological Disorders and Stroke* of the National Institutes of Health under award numbers R01NS092398, R01NS094003, R01NS038104, and U54NS115322; and an NHS Research Scotland Career Researcher Fellowship (WS).

Author contributions WS and EBL reviewed the pathology and generated the original observations; WS provided a first draft of the manuscript and collated comments into a final submission draft. All other authors provided edits and comments on manuscript drafts.

Data availability The data supporting the conclusions of this article are included within the article.

Declarations

Conflict of interests The authors declare no competing interests.

Ethics approval This study is reported in accordance with the CARE guidelines for reporting case reports.

Consent to Publish Written informed consent for publication of the clinical details and images included in this manuscript was obtained from the parent of the patient. A copy of the consent form is available for review by the editor of this journal.

Open Access This article is licensed under a Creative Commons Attribution 4.0 International License, which permits use, sharing, adaptation, distribution and reproduction in any medium or format, as long as you give appropriate credit to the original author(s) and the source, provide a link to the Creative Commons licence, and indicate if changes were made. The images or other third party material in this article are included in the article's Creative Commons licence, unless indicated otherwise in a credit line to the material. If material is not included in the article's Creative Commons licence and your intended use is not permitted by statutory regulation or exceeds the permitted use, you will need to obtain permission directly from the copyright holder. To view a copy of this licence, visit <http://creativecommons.org/licenses/by/4.0/>.

References

1. Bieniek KF, Cairns NJ, Cray JF et al (2021) The second NINDS/NIBIB consensus meeting to define neuropathological criteria for the diagnosis of chronic traumatic encephalopathy. *J Neuropathol Exp Neurol* 80:210–219. <https://doi.org/10.1093/jnen/nlab001>
2. Cantu RC (1998) Second-impact syndrome. *Clin Sports Med* 17:37–44. [https://doi.org/10.1016/s0278-5919\(05\)70059-4](https://doi.org/10.1016/s0278-5919(05)70059-4)
3. Engelhardt J, Brauge D, Loiseau H (2021) Second impact syndrome. myth or reality? *Neurochirurgie* 67:265–275. <https://doi.org/10.1016/j.neuchi.2019.12.007>
4. Geddes JF, Vowles GH, Nicoll JA, Revesz T (1999) Neuronal cytoskeletal changes are an early consequence of repetitive head injury. *Acta Neuropathol* 98:171–178. <https://doi.org/10.1007/s004010051066>
5. Johnson VE, Stewart W, Smith DH (2013) Axonal pathology in traumatic brain injury. *Exp Neurol* 246:35–43. <https://doi.org/10.1016/j.expneurol.2012.01.013>
6. Lee EB, Kinch K, Johnson VE, Trojanowski JQ, Smith DH, Stewart W (2019) Chronic traumatic encephalopathy is a common comorbidity, but less frequent primary dementia in former soccer and rugby players. *Acta Neuropathol* 138:389–399. <https://doi.org/10.1007/s00401-019-02030-y>

7. McCrory P, Meeuwisse WH, Dvořák J et al (2017) 5th International Conference on Concussion in Sport (Berlin). *Br J Sports Med.* 51:837. <https://doi.org/10.1136/bjsports-2017-097878>
8. McKee AC, Stern RA, Nowinski CJ et al (2013) The spectrum of disease in chronic traumatic encephalopathy. *Brain* 136:43–64. <https://doi.org/10.1093/brain/aws307>
9. McKee AC, Cairns NJ, Dickson DW et al (2016) The first NINDS/NIBIB consensus meeting to define neuropathological criteria for the diagnosis of chronic traumatic encephalopathy. *Acta Neuropathol* 131:75–86. <https://doi.org/10.1007/s00401-015-1515-z>
10. Reichard RR, Smith C, Graham DI (2005) The significance of β -APP immunoreactivity in forensic practice. *Neuropathol Appl Neurobiol* 31:304–313. <https://doi.org/10.1111/j.1365-2990.2005.00645.x>
11. Russell ER, Mackay DF, Lyall D, Stewart K, MacLean JA, Robson J et al (2022) Neurodegenerative disease risk among former international rugby union players. *J Neurol Neurosurg Psychiatry* 93:1262–1268. <https://doi.org/10.1136/jnnp-2022-329675>
12. Smith DH, Johnson VE, Stewart W (2013) Chronic neuropathologies of single and repetitive TBI: substrates of dementia? *Nat Rev Neurol* 9:211–221. <https://doi.org/10.1038/nrneuro.2013.29>
13. Stewart W, McNamara PH, Lawlor B, Hutchinson S, Farrell M (2016) Chronic traumatic encephalopathy: a potential late and under recognized consequence of rugby union? *QJM* 109:11–15. <https://doi.org/10.1093/qjmed/hcv070>
14. Tator C, Starkes J, Dolansky G, Quet J, Michaud J, Vassilyadi M (2019) Fatal second impact syndrome in Rowan Stringer, a 17-year-old rugby player. *Can J Neurol Sci* 46:351–354. <https://doi.org/10.1017/cjn.2019.14>

Publisher's Note Springer Nature remains neutral with regard to jurisdictional claims in published maps and institutional affiliations.