

Gr R Storybook



Boitekanelo bo botlhokwa

Published by: The UCL Centre for Educational Leadership, University College London & The Centre for the Study of Resilience, University of Pretoria.

This publication can be copied, translated or adapted when necessary steps have been taken to acknowledge all relevant sources.

Authors: G.J. Podile Primary School, Grade R (A), 2022:

Future Bumhudza, Onkgopotse Diphoko, Karabo Jobondo, Tlhompo Kesbile, Botlhale Khumalo, Reotshepile Kongo, Keletso Leburu, Koketso Letlhoo, Neo Loeto, Omphile Mabati, Blessing Magashula, Oreneile Maiketswane, Goitseone Marumo, Resegofetse Masalesa, Khanyisiwe Mashaba, Rethabile Matshane, Bontle Mere, Omatla Mhele, Remoabetswe Mobeane, Tshiamo Mogotsi, Marina Mokoma, Oreabetse Moroke, Olerato Mothibi, Atlegang Mporu, Ryan Muchenje, Mosetsanagape Muhujane, Reatile Phajane, Keaotshepa Ramontja, Albert Sam, Oratile Sekao, Rorisang Sekao, Kgologano Seoloane, Realeboga Sereo, Tshepang Setlhare, Xolisile Soul, Mpho Thousand, Lethabo Tlatsana, Lethabo Tshenyego.

School: G.J. Podile Primary School
Principal: Setlhare Modise
Teacher: Mapule Phanyane
CRC: Kesaleboga Kesimolotse
Fieldworker: Nomhle Mboneni

Illustrators:

Cover: Ryan Muchenje
Page 1: Botlhale Khumalo
Page 2: Sikhanyisile Mashaba
Page 3: Botlhale Khumalo
Page 4: Future Bumhudza
Page 5: Atlegang Mporu
Page 6: Keletso Leburu
Page 7: Oreabetse Moroke
Page 8: Reatile Phajane

Font within booklet: Grade 1 font by Edu-Aid

Websites and links were correct at the time of publication.

For further information about the project, please visit

<http://www.ucl.ac.uk/ioe/enabling-schools>

Acknowledgements

The following partners have played a valuable role in the co-creation of this storybook:

The North West Province Department of Education, Ngaka Modiri Molema District, South Africa.

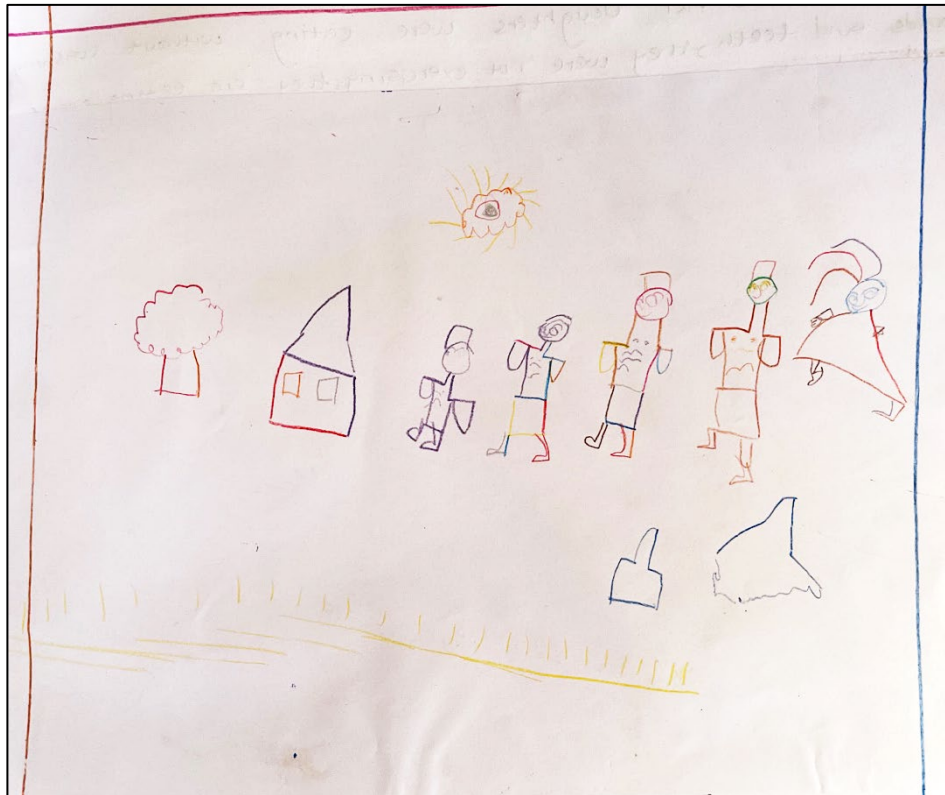
The Department of Basic Education, Directorate: Rural Education, South Africa.

London South Bank University, United Kingdom.

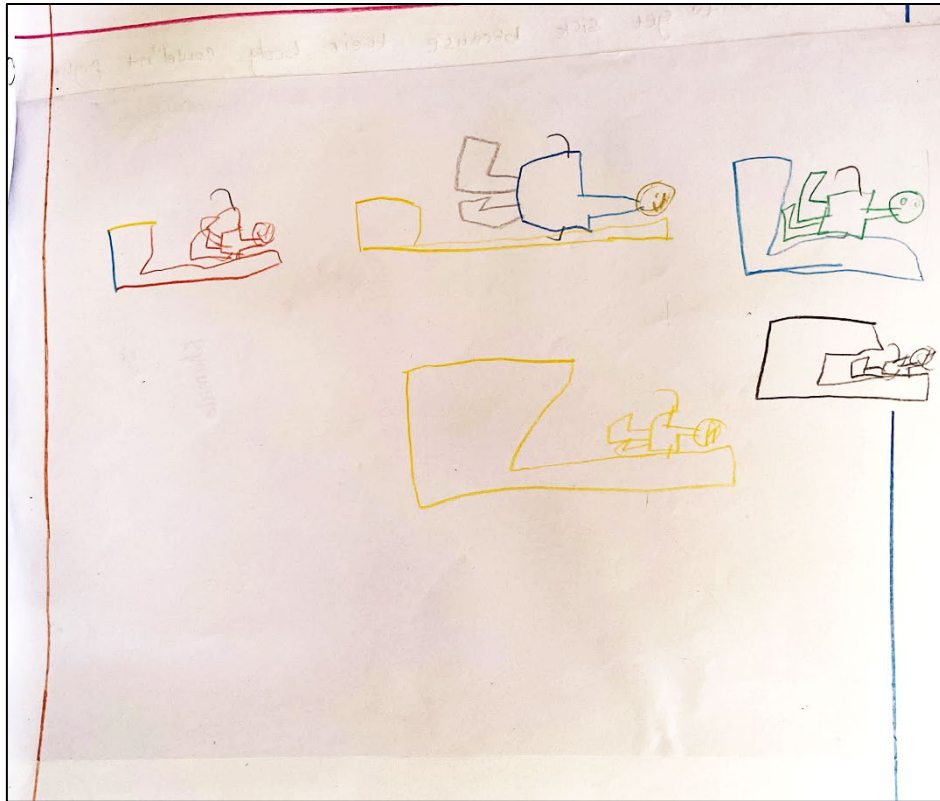
The Economic & Social Research Council (ESRC) (ES/T005149/1), United Kingdom (funder).



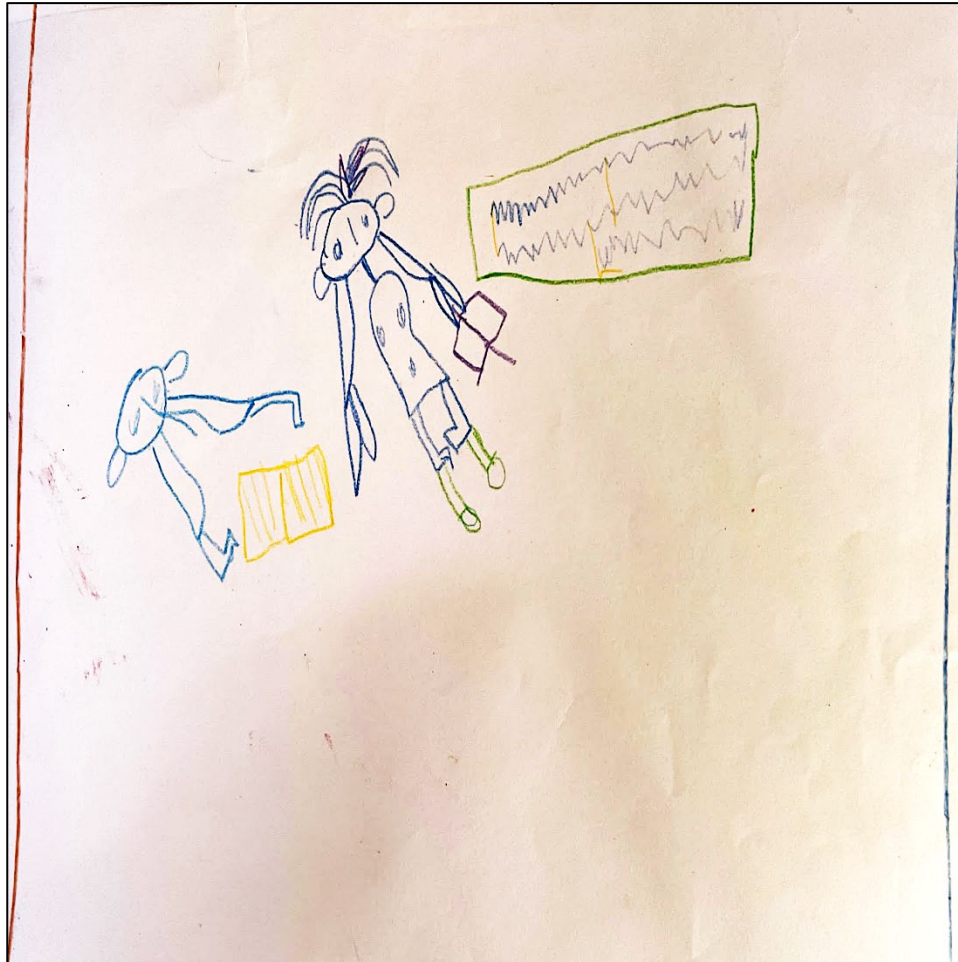
Go ne go na le mosimane a
bidiwa Pule. O ne a nna le
batsadi ba gagwe. Ba ne ba nna
mo motseng o o bidiwang
Dioloane, ba tshedisana
sentle le baagisani ba bone.
Baagisani ba bone ba ne ba nna
ba le batlhano mo lapeng, e leng
mme Segametsi le basetšana
ba le bane e leng Koketso, Neo,
Kamogelo le Remofilwe.



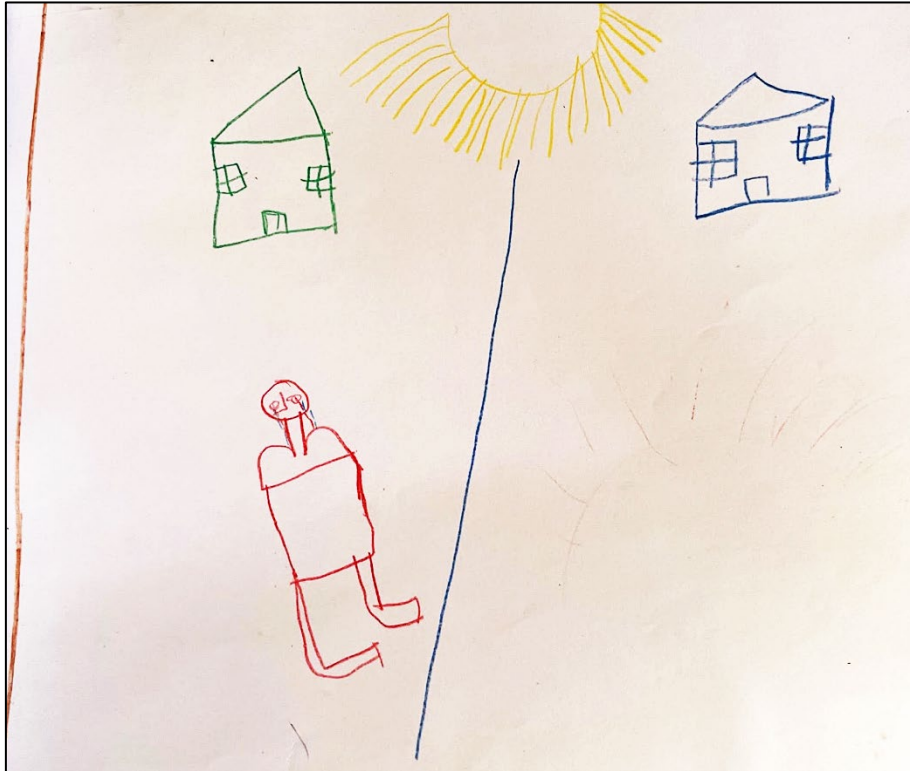
Mme Segametsi le bassetsana
ba gagwe ba ne ba ja fela ba sa
tlhapa matsogo le meno, ba sa
ikatisa, ba ja dijo dingwe le
dingwe gape ba
kgona go sa je difitlholo.



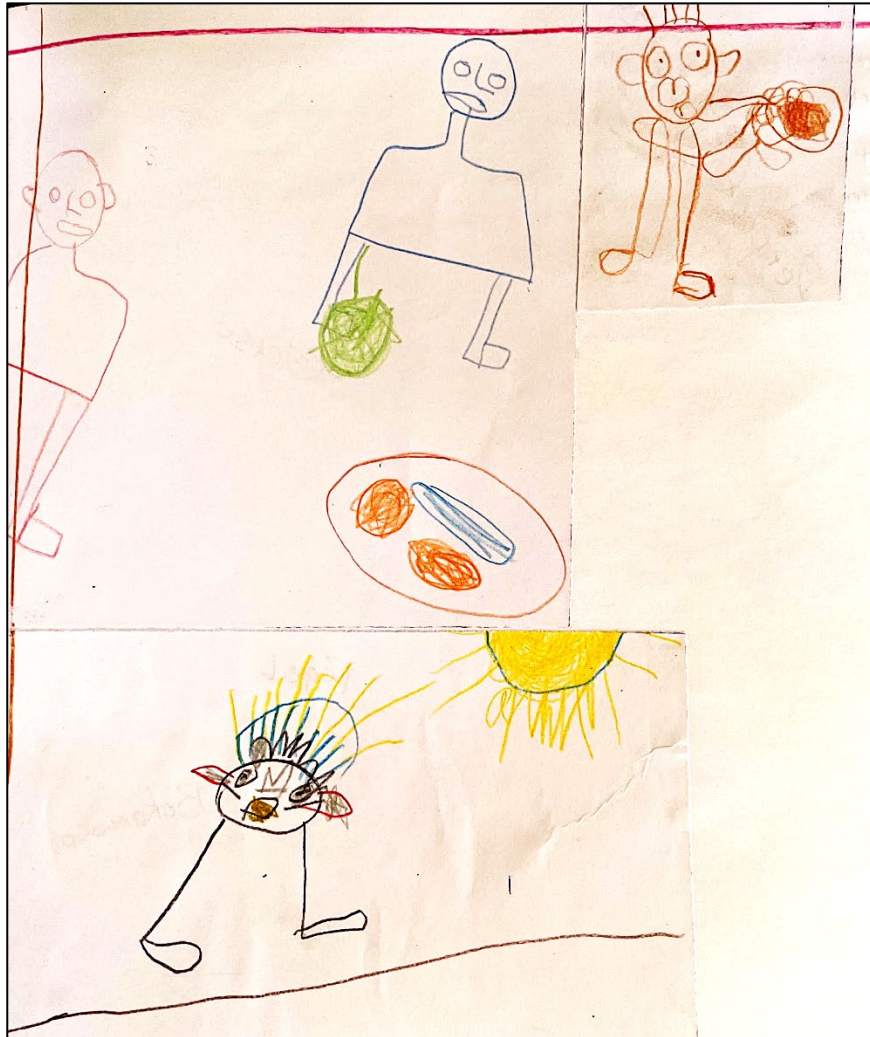
Ba ne ba simolola go lwala ka ntlha ya gore mebele ya bone e sa tlhole e kgona go lwantsha kokwanatlhoko. Ba ne ba sa itse gore malwetse a bone a bakwa ke eng.



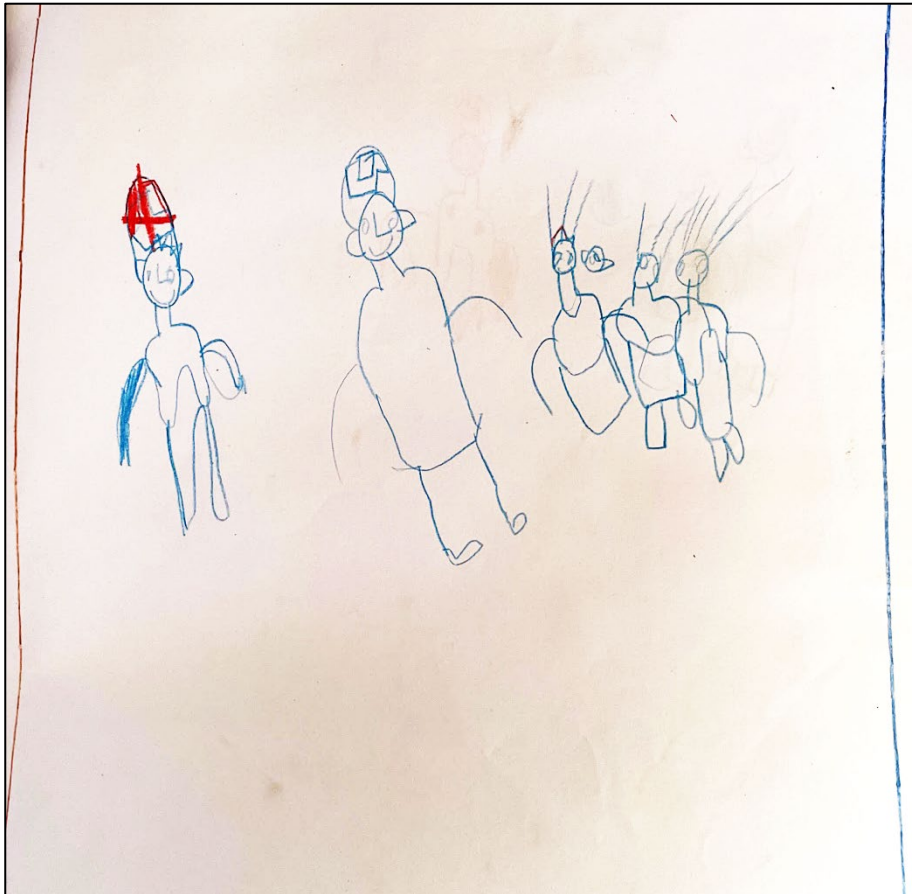
Ka Pule e le ngwana yo o tshwarelelang fa a rutiwa, o ne a tshwareletse se a neng a se rutilwe kwa sekolong gore fa o batla go tshela botshelo bo bo itekanetseng o dira jang.



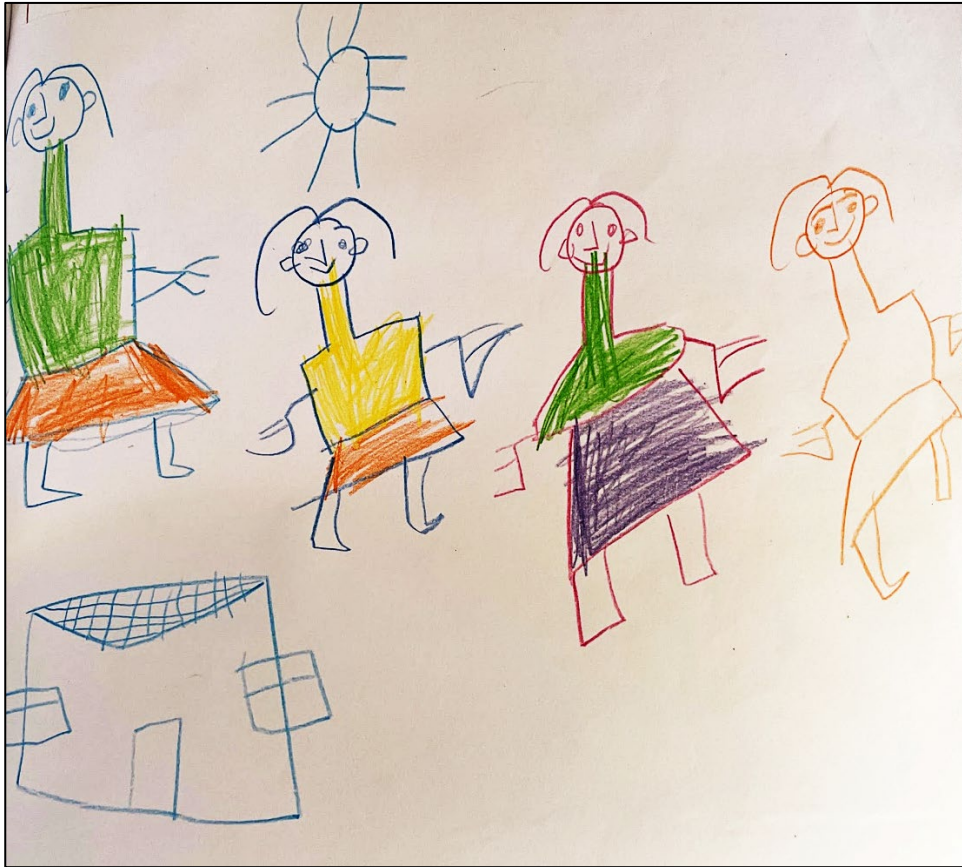
Pule o ne a utlwile botlhoko thata go bona baagisane ba lwala ka gone o ne a ba tsaya jaaka losika la gagwe. O ne a ba bolelela ka se a se rutilweng kwa sekolong.



A re ba rutilwe gore pele ba ja
ba tlhape matsogo ka ntlha ya
fa matsogo a tshwara sengwe
le sengwe gomme ba ikatise ka
ntlha ya fa mmele o tlhoka
katiso letsatsi le letsatsi. Ba
tlhape meno, ba je maungo le
merogo e e farologaneng gape
ba je difitlholo
ka fa e le dijo tse
di botlhokwa.



Baagisani ba ne ba ya kwa
bookelong mme ngaka ya ba
bolelela dilo tsotlhe tse di
builweng ke Pule.
Go tloga letsatsi leo ba ne ba
simolola go diragatsa se ba se
laetsweng ke ngaka. Ba ne ba
tlotlomatsa Pule ka ntlha ya fa
a ba thusitse ka
tshedimosetso.



Mme Segametsi le basetsana
ba gagwe ba ne ba fola mme
ba dula ba itse gore fa o batla
mmele wa gago o dule o
itekanetse o tshwanetse
wa dira jang.

The contents of this booklet can be copied, translated or adapted as long as the relevant sources have been acknowledged properly.

Boitekanelo bo botlhokwa

Authors:

G.J. Podile Primary School, Gr 1B, 2022, North-West Province, South Africa

<http://www.ucl.ac.uk/ioe/enabling-schools>

