

**Project: Environmental
Impact of Digital
Services on Health and
Wellbeing in the Home**
UKRI grant: EP/V042130/1

slides->
keepfaking.it/hdca2022



Evolving digital infrastructures in UK sheltered housing

Some implications for freedoms and capabilities

Presented at HDCA 2022, Antwerp, 20th September 2022

Cian O'Donovan | @cian | c.o'donovan@ucl.ac.uk

UCL, Department of Science and Technology Studies

with Ralitsa Hiteva, Kate Simpson and Melanie Smallman

**Project: Environmental
Impact of Digital
Services on Health and
Wellbeing in the Home**

UKRI grant: EP/V042130/1

Beaufort Court, St. Leonards, UK



How is this useful?
(for HDCA colleagues)

We want to understand... how to better target, anticipate, assess and evaluate innovation in public welfare and long-term care institutions at the level of infrastructure, systems and digital transformations

Conclusions

1. Digital services are not plug and play...
 2. Capabilities...
 - Roles, identities, subjectivities and valued beings vs prescriptive doings
 - E.g. the co-production of *independent* or *vulnerable residents* versus focus on technology acceptance, engagement or even exclusion and inclusion
 - Opportunities for...
 - Interventions towards convivial, collective and pro-community digital infrastructures
 - At its most radical: rethinking public utility provision for housing, e.g. internet
-

**paper:
Evolving digital
infrastructures**

The problem: digital transformation in housing schemes

Research questions, problematization and our
approach

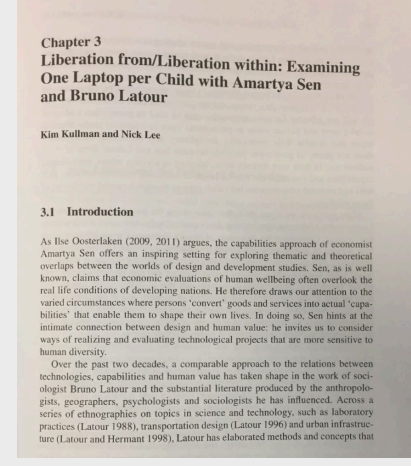
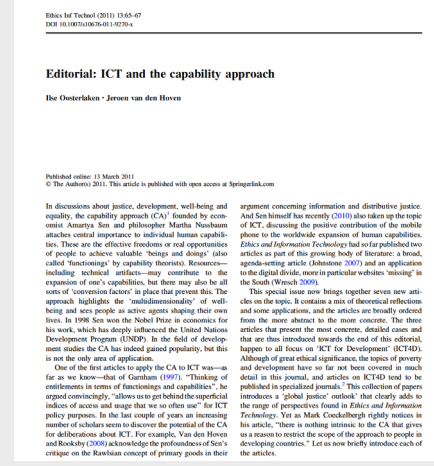
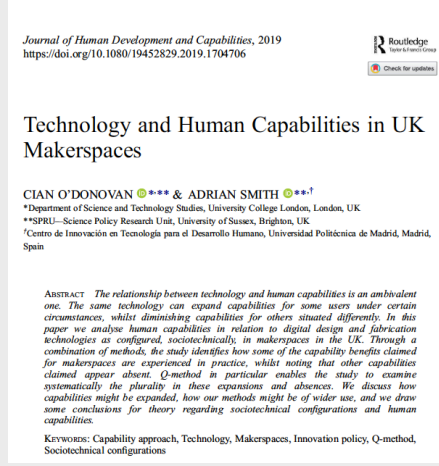
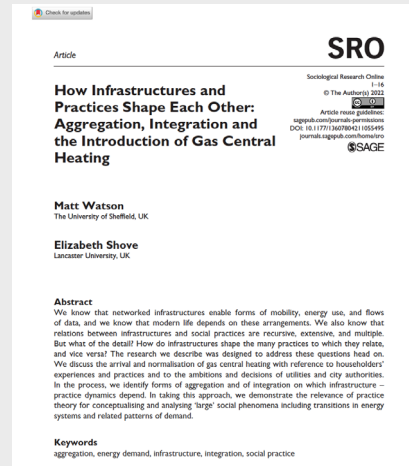
PART 1

Why digital infrastructures, not just technologies?



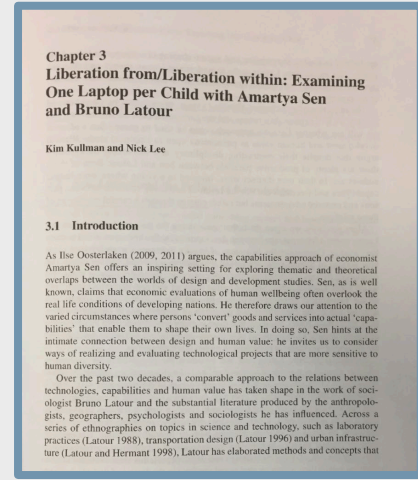
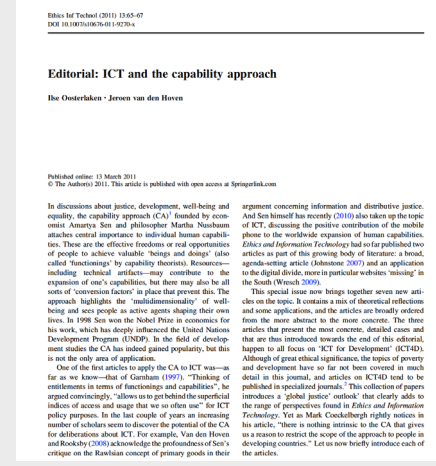
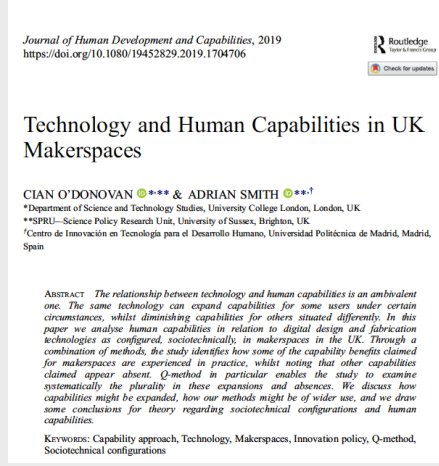
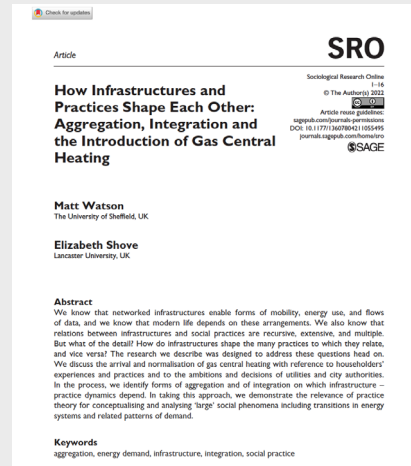
- Digital technologies (telehealth, patient portals, digital wards) are often developed in silos and are not fully interoperable with built environment systems
 - Digital technologies are also often not designed for specific needs and capabilities of staff at housing schemes
 - limited understanding of the functions and purpose of the systems
 - on site staff are expected to provide remote assistance and maintenance (e.g. restarting systems, typing in access codes)
 - Infrastructures foreground norms and standards of evaluation, regulation and governance / bring specific problems of scale and complexity
 - Data, cloud services/logics and the allure of integration
 - [Politics and societal leverage – see keynote!]
-

What the literature tells us materials, practices and meanings



- Watson & Shove 2022: infrastructures & practices evolve together, recursively
- O'Donovan & Smith 2019: capabilities valued in digital spaces (multi-scalar doings and beings incl. identity)
- Oosterlaken et al: ICTs and capabilities
- Kullman & Lee: on translation (STS) and resource conversion (CA)

What the literature tells us materials, practices and meanings



“...more lasting capabilities and freedoms are not the result of unmaking relations between persons and material environments but rather emerge through a careful reordering of those relations”

– Kullman & Lee (2012)

Kullman, K., & Lee, N. (2012). Liberation from/Liberation within: Examining One Laptop per Child with Amartya Sen and Bruno Latour. In I. Oosterlaken & J. van den Hoven (Eds.), *Capability approach, technology and design* (pp. 39–55). Springer.

Meaningful digital encounters



Progress in Human Geography 32(3) (2008) pp. 323–337

Progress in Human Geography lecture



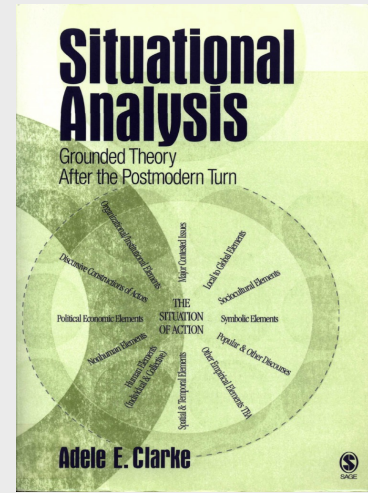
Living with difference: reflections on geographies of encounter†

Gill Valentine*

School of Geography, University of Leeds, Woodhouse Lane, Leeds LS2 9JT, UK

Abstract: In this *Progress in Human Geography* annual lecture I reflect on geographical contributions to academic and policy debates about how we might forge civic culture out of difference. In doing so I begin by tracing a set of disparate geographical writings – about the micro-publics of everyday life, cosmopolitanism hospitality, and new urban citizenship – that have sought to understand the role of shared space in providing the opportunity for encounter between ‘strangers’. This literature is considered in the light of an older tradition of work about ‘the contact hypothesis’ from psychology. Then, employing original empirical material, I critically reflect on the notion of ‘meaningful contact’ to explore the paradoxical gap that emerges in geographies of encounter between values and practices. In the conclusion I argue for the need for geographers to pay more attention to sociospatial inequalities and the insecurities they breed, and to unpacking the complex and intersecting ways in which power operates.

Key words: encounter, inequality, intersectionality, power, prejudice.



- **Meaningful digital encounters:** moments of re-ordering during infrastructure building, maintenance, repair and evolution – proximity doesn't always lead to shared values
- **Via situational analysis (Clarke 2009)**
 - Mapping distributed action and accomplishments which are produced through the conversion/translation of heterogeneous elements

Research questions

1. How do **digital infrastructures** reconstitute social and material relations within housing schemes?
 2. What opportunities do residents and staff have to alter these?
 3. How can we understand evolving digital infrastructures in terms of **capabilities?**
-

**paper:
Evolving digital
infrastructures**

Encountering digital infrastructures in sheltered housing

Evidence from the case

PART 2

Research situations



Hastings / St. Leonards

~100 residents

~96 homes

Independent Living

Sheltered housing



Rugby

~43 residents

~37 homes

Independent Living

Sheltered housing



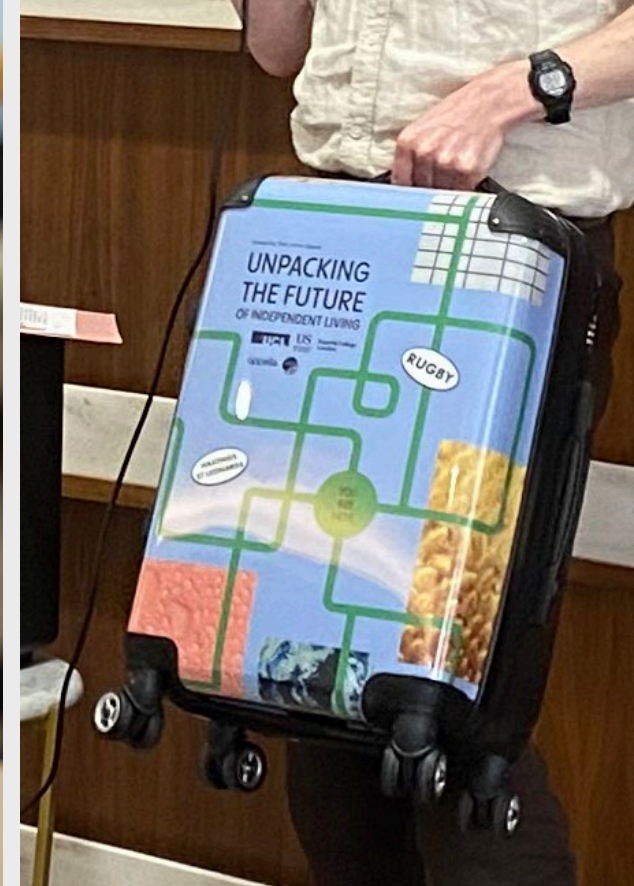
Stratford Upon Avon

~155 residents

~102 homes

Extra Care/ Independent Living

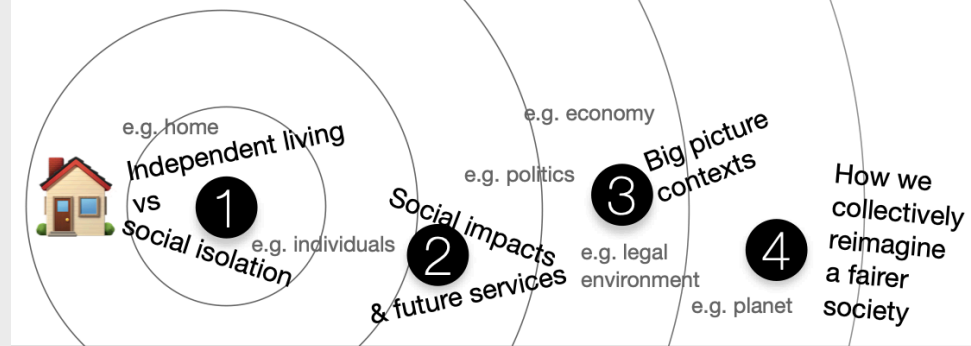
Sheltered housing



Interviews, focus groups, observation, workshops and trials: independence, future visions, living with technology
e.g. How do we design out waste



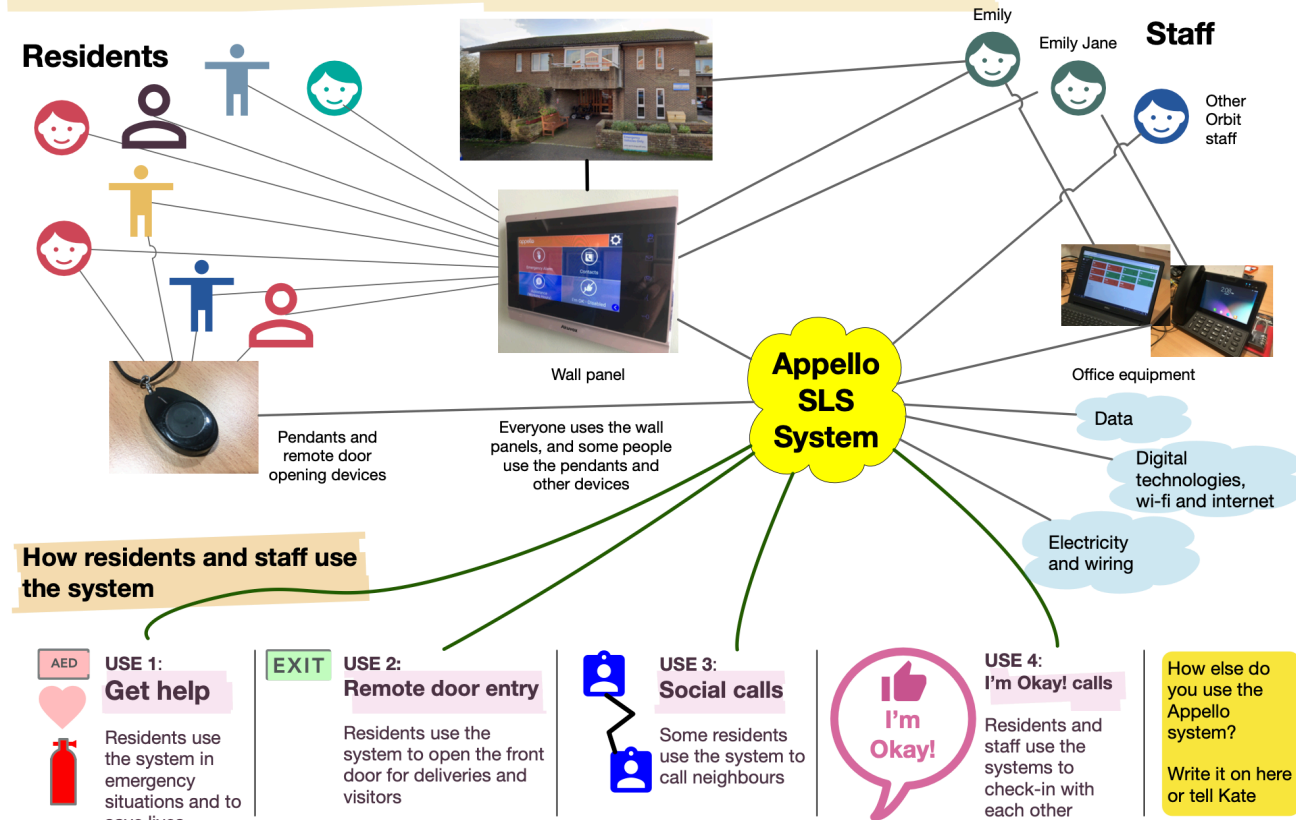
Exploring what independent living means from different perspectives



Positions taken by residents



Mapping how people in Beaufort Court use the Appello system



Positions taken by residents



Safety and connection at home

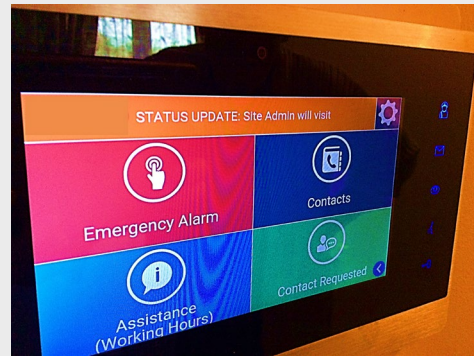
The diagram shows a house with various icons and speech bubbles. The icons include a sun, a bird, a tree, a person, and a person sitting at a table. The speech bubbles contain the following text:

- They ought to come round and check once in a while to make sure everybody's is working
- I think we've more or less got used to it now, but in the beginning... problems... I think one or two are still having problems
- ...we don't really understand the in-depth of it all really
- They never hear, when I say 'hello, who is it?' I live downstairs, so it's quicker for me to nip out and open the door for them...it's not loud enough (especially with lounge door closed to keep heat in)
- Sometimes, when you press the 'I'm okay', it comes up 'I'm not okay' so you have to press it a couple of times
- You can always see who's out there, if I don't know them, they don't get in!
- That's very rare though, I suppose sometimes they come to the wrong address
- I don't need to take my internet with me... I don't wanna be like everybody else on their phone all the time...we've forgotten how to talk haven't we!
- I feel like saying when they come through the door 'hand your phones in!' They come and see you but they've all got their phones out!
- When you're older... It's not a natural thing to us... it's second nature to the kids!

US UNIVERSITY OF SUSSEX UCL Imperial College London

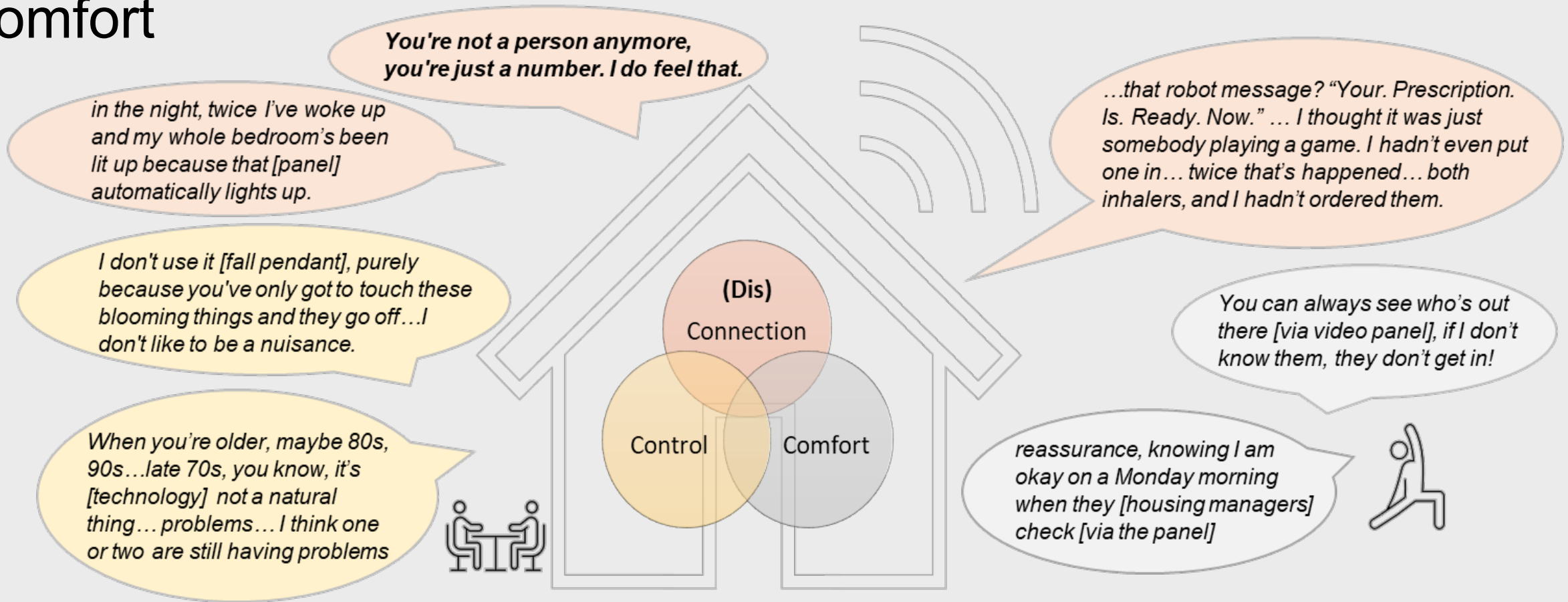
Here are some of the insights we heard from you and your neighbours

Positions taken by residents



1. Feeling safer with some technology features
2. Praise for new system
3. Distrust of new system
4. Dissatisfaction with people linked to the system
5. Previously feeling coerced into wellbeing calls
6. Opt to speak to family over housing managers, where possible
7. Feeling left behind technology
8. Low technology confidence [co-production of being older]

Disconnection, control and comfort



**paper:
Evolving digital
infrastructures**

Encountering infrastructures, cultivating capabilities

Thoughts for capability building and designing
infrastructure interventions

PART 3

RQs: Relations / reconfiguring / cultivating capabilities

Limitations of plug and play logics



1. Technologies aren't plug and play – they are configured locally
(Perhaps P&P alludes capability building?!?)
 2. Digital is often a synonym for 'new'.
Fails to acknowledge aggregation over waves of digital infrastructuralising.
 3. Problem because
 1. measures of **acceptance**, **roll-out** and **scale-up** of digital technologies don't really tell us what we want to know about wellbeing, sustainability etc.
 2. Wrong diagnosis when things don't go right
-

Co-
production of
new roles,
identities,
subjectivities

1. Connection is valued, but does not cultivate capabilities by itself.
 - Everyone agreed connection is central to the home. But connecting what and how? Connecting with neighbours, and nature is valued.
 - But when residents encounter tech already connected to services, firms and analyses outside their control they can feel overwhelmed
 2. Co-production of independence (partial)
 3. Co-production of vulnerabilities
 - *“I can’t work my Smart TV, how am I ever going to manage this”*
 4. Ongoing work investigating staff subjectivities
-

Meaningful digital

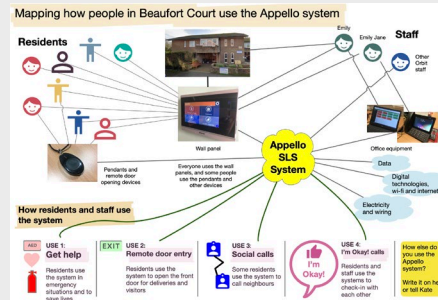
encounters

Experiences
that change
perceptions
and values
beyond a
single
interaction

- Notable encounters: during installation, when things go wrong, alarm calls, digital myths
 - In the absence of meaningful digital encounters, roles and subjectivities formed
 - E.g. meaning making that is mediated and sustained via networks, systems and platforms
 - Opportunities to understand; intervene; cultivate capabilities
-

Building convivial digital infrastructure

—
potential for
design
interventions



1. **Convivial logics** for digital design: pairing technologies was a new concept for many residents.
2. ...housing association and Appello system can act as platform and gate keeper but needs support.
3. Developing **new digital organizational set-ups**; digital development programmes; digital wellbeing officers; digital needs assessments; basic digital provision package
4. **Collective capabilities**: many residents need neighbours to help in communal areas...-> Broadband connection in communal areas and individual apartments as BAU
5. **Whole system approaches** – solutions arising from working and coordinating collaboratively across housing, healthcare, long term care sectors

Conclusions

1. Digital services are not plug and play...
 2. Capabilities...
 - Subjectivities and valued beings vs prescriptive doings
 - E.g. the co-production of *independent* or *vulnerable residents* versus focus on technology acceptance, engagement or even exclusion and inclusion
 - **Next:** mapping digital capabilities valued by staff
 - Opportunities for...
 - Interventions towards convivial, collective and pro-community digital infrastructures
 - At its most radical: rethinking public utility provision for housing, e.g. internet
-



Thank you, please do get in touch with questions or comments:

c.o'donovan@ucl.ac.uk

Cian O'Donovan | @cian
UCL, Department of Science and Technology Studies
with Ralitsa Hiteva, Kate Simpson and Melanie Smallman