



OPEN ACCESS

CLINICAL SCIENCE

Characteristics associated with poor COVID-19 outcomes in people with psoriasis, psoriatic arthritis and axial spondyloarthritis: data from the COVID-19 PsoProtect and Global Rheumatology Alliance physician-reported registries

Pedro M Machado ^{1,2,3} Martin Schäfer ⁴ Satveer K Mahil,⁵ Jean Liew,⁶ Laure Gossec ^{7,8} Nick Dand,⁹ Alexander Pfeil ¹⁰ Anja Strangfeld ^{4,11} Anne Constanze Regierer ¹² Bruno Fautrel ¹³ Carla Gimena Alonso,¹⁴ Carla G S Saad,¹⁵ Christopher E M Griffiths,^{16,17} Claudia Lomater,¹⁸ Corinne Miceli-Richard ^{19,20} Daniel Wendling ²¹ Deshira Alpizar Rodriguez ²² Dieter Wiek,²³ Elsa F Mateus ^{24,25} Emily Sirotych ^{26,27,28} Enrique R Soriano ^{29,30} Francinne Machado Ribeiro ³¹ Felipe Omura,³² Frederico Rajão Martins ³³ Helena Santos,^{34,35} Jonathan Dau,³⁶ Jonathan N Barker,³⁷ Jonathan Hausmann ^{38,39} Kimme L Hyrich ^{17,40} Lianne Gensler,⁴¹ Ligia Silva,⁴² Lindsay Jacobsohn,⁴³ Loreto Carmona ⁴⁴ Marcelo M Pinheiro ⁴⁵ Marcos David Zelaya,⁴⁶ María de los Ángeles Severina,^{47,48} Mark Yates ⁴⁹ Maureen Dubreuil,⁵⁰ Monique Gore-Massy,⁵¹ Nicoletta Romeo,⁵² Nigil Haroon,^{53,54} Paul Sufka,⁵⁵ Rebecca Grainger,⁵⁶ Rebecca Hasseli ^{57,58} Saskia Lawson-Tovey ^{17,59} Suleman Bhana,⁶⁰ Thao Pham ^{61,62} Tor Olofsson ^{63,64} Wilson Bautista-Molano,^{65,66} Zachary S Wallace,^{67,68} Zenas Z N Yiu,^{17,69} Jinoos Yazdany,⁴³ Philip C Robinson ^{70,71} Catherine H Smith⁵

Handling editor Josef S Smolen

► Additional supplemental material is published online only. To view, please visit the journal online (<http://dx.doi.org/10.1136/ard-2022-223499>).

For numbered affiliations see end of article.

Correspondence to

Professor Pedro M Machado, Neuromuscular Diseases, University College London, London, UK; p.machado@ucl.ac.uk

Received 17 October 2022
Accepted 24 January 2023



© Author(s) (or their employer(s)) 2023. Re-use permitted under CC BY-NC. No commercial re-use. See rights and permissions. Published by BMJ.

To cite: Machado PM, Schäfer M, Mahil SK, et al. *Ann Rheum Dis* Epub ahead of print: [please include Day Month Year]. doi:10.1136/ard-2022-223499

ABSTRACT

Objectives To investigate factors associated with severe COVID-19 in people with psoriasis (PsO), psoriatic arthritis (PsA) and axial spondyloarthritis (axSpA).

Methods Demographic data, clinical characteristics and COVID-19 outcome severity of adults with PsO, PsA and axSpA were obtained from two international physician-reported registries. A three-point ordinal COVID-19 severity scale was defined: no hospitalisation, hospitalisation (and no death) and death. ORs were estimated using multivariable ordinal logistic regression.

Results Of 5045 cases, 18.3% had PsO, 45.5% PsA and 36.3% axSpA. Most (83.6%) were not hospitalised, 14.6% were hospitalised and 1.8% died. Older age was non-linearly associated with COVID-19 severity. Male sex (OR 1.54, 95% CI 1.30 to 1.83), cardiovascular, respiratory, renal, metabolic and cancer comorbidities (ORs 1.25–2.89), moderate/high disease activity and/or glucocorticoid use (ORs 1.39–2.23, vs remission/low disease activity and no glucocorticoids) were associated with increased odds of severe COVID-19. Later pandemic time periods (ORs 0.42–0.52, vs until 15 June 2020), PsO (OR 0.49, 95% CI 0.37 to 0.65, vs PsA) and baseline exposure to TNFi, IL17i and IL-23i/IL-12+23i (OR 0.57, 95% CI 0.44 to 0.73; OR 0.62, 95% CI 0.45 to 0.87; OR 0.67, 95% CI 0.45 to 0.98; respectively; vs no disease-modifying

antirheumatic drug) were associated with reduced odds of severe COVID-19.

Conclusion Older age, male sex, comorbidity burden, higher disease activity and glucocorticoid intake were associated with more severe COVID-19. Later pandemic time periods, PsO and exposure to TNFi, IL17i and IL-23i/IL-12+23i were associated with less severe COVID-19. These findings will enable risk stratification and inform management decisions for patients with PsO, PsA and axSpA during COVID-19 waves or similar future respiratory pandemics.

INTRODUCTION

The COVID-19 pandemic has significantly impacted people with immune-mediated inflammatory diseases (IMiDs), particularly those taking immunomodulatory drugs such as biological or targeted synthetic disease-modifying antirheumatic drugs (b/tsDMARDs).^{1–4} While risk factors for severe COVID-19 outcomes have been demonstrated in both registry-based and population-based studies, for people with IMiDs collectively and for specific diseases such as rheumatoid arthritis, relevant risk factor data are limited for axial spondyloarthritis (axSpA) and psoriatic disease (including psoriasis without arthritis (PsO) and psoriatic arthritis

WHAT IS ALREADY KNOWN ON THIS TOPIC

- ⇒ Factors associated with severe COVID-19 outcomes have been demonstrated in both registry-based and population-based studies for people with immune-mediated inflammatory diseases (IMiDs) collectively and for specific IMiDs.
- ⇒ However, relevant risk factor data are limited for axial spondyloarthritis (axSpA) and psoriatic disease (including psoriasis without arthritis (PsO) and psoriatic arthritis (PsA)), a group of conditions that shares pathophysiological mechanisms and approved treatments, particularly targeted therapies.

WHAT THIS STUDY ADDS

- ⇒ Older age, male sex, comorbidity burden, higher disease activity and glucocorticoid intake were associated with more severe COVID-19.
- ⇒ Later pandemic time periods, PsO and exposure to TNFi, IL17i and IL-23i/IL-12+23i were associated with less severe COVID-19.

HOW THIS STUDY MIGHT AFFECT RESEARCH, PRACTICE OR POLICY

- ⇒ The findings from this study will enable risk stratification for patients with PsO, PsA and axSpA.
- ⇒ These findings will inform the development of tailored management strategies and evidence-based recommendations for patients with PsO, PsA and axSpA.

(PsA)).^{5–13} The association of specific classes of b/tsDMARDs commonly used in this population, including IL-17 inhibitors (IL17i) and IL-23 or IL-12/23 inhibitors (IL-23i/IL-12+23i), with COVID-19 outcomes has not been well studied. Improved understanding of the risks associated with exposure to these medications in this population will address knowledge gaps as we continue to navigate COVID-19 risks in the postvaccination era.

We used data from the COVID-19 Global Rheumatology Alliance (C19-GRA) and the Psoriasis Patient Registry for Outcomes, Therapy and Epidemiology of COVID-19 Infection (PsoProtect) physician-reported registries to evaluate the associations of baseline characteristics, including different classes of b/tsDMARDs, with COVID-19 severity in people with PsO, PsA and axSpA.

METHODS**Data source**

The C19-GRA physician-reported observational registry launched on 24 March 2020. Patients are eligible for inclusion if they have both a pre-existing rheumatic disease and SARS-CoV-2 infection. PsoProtect is a physician-reported observational registry launched on 27 March 2020. Patients are eligible for inclusion if they have both pre-existing PsO and SARS-CoV-2 infection. For both registries, data are entered voluntarily into the data entry systems by rheumatologists/dermatologists or under the supervision of rheumatologists/dermatologists. In Argentina, Brazil, France, Germany, Italy, Portugal and Sweden, C19-GRA data are transferred from national registries; in all other countries, data are entered directly into the registries' data entry systems. Countries were categorised according to the six WHO regions (www.who.int); the 'Americas' was further divided into north and south. Further details of the registries

have been described elsewhere.^{13–18} We used data collected on or before 25 October 2021.

COVID-19 reporting and primary outcome of interest

Both confirmed and presumptive cases of COVID-19 were reported. For analysis, patients were subsequently categorised into (1) confirmed or high likelihood of COVID-19 (chest imaging (CT or chest X-ray) showing bilateral infiltrates and/or symptoms after close contact with a known laboratory-confirmed COVID-19 positive patient) or (2) presumptive cases based on symptoms alone.

The primary outcome of interest of this study was COVID-19 outcome, assessed by use of an ordinal COVID-19 severity scale with three mutually exclusive categories: (1) no hospitalisation and no death; (2) hospitalisation, but no death and (3) death. 'Baseline characteristics' refer to demographic or clinical characteristics at the time of COVID-19 symptom onset (or diagnosis if asymptomatic).

IMiD treatment prior to COVID-19

Medications used to treat the IMiD prior to COVID-19 diagnosis were categorised into groups. Immunomodulatory drugs (conventional synthetic (cs)/biological (b)/targeted synthetic (ts) DMARDs) were distinguished from the PsO-specific non-biological systemic agent acitretin as well as from non-steroidal anti-inflammatory drugs (NSAIDs) and glucocorticoids (GC). csDMARDs included antimalarials, cyclosporine, leflunomide, methotrexate and sulfasalazine. bDMARDs included TNFi (eg, adalimumab, certolizumab, etanercept, golimumab, infliximab and TNFi biosimilars), IL-17i (eg, brodalumab, ixekizumab and secukinumab), IL-12/23i (ustekinumab) and IL-23i (eg, guselkumab, risankizumab and tildrakizumab). tsDMARDs included apremilast and JAKi (eg, baricitinib, tofacitinib and upadacitinib). IL-23i and IL-12/23i were combined in the same group for data analysis (IL-23i/IL-12+23i). Regarding NSAIDs, we asked physicians to report if at the time of COVID-19 symptom onset (or diagnosis if asymptomatic), the patient was taking NSAIDs, without specifying a minimal duration of a continuous treatment with NSAIDs. We chose no current DMARD use as the reference group after considering the groups' sample size and internal validity to be used as comparator for exposure to the various IMiD treatments. For more details regarding the choice of DMARD reference category, refer to online supplemental methods.

Statistical analyses

Descriptive tables were produced for the whole cohort and by diagnostic group (PsO, PsA and axSpA, as defined by the reporting healthcare professional). All patients with confirmed or presumptive COVID-19 were included in the primary analysis.

Independent associations between demographic and disease features and the ordinal COVID-19 outcome were estimated by multivariable ordinal logistic regression using the proportional odds model and were reported as OR and 95% CIs. In ordinal regression analysis, the effect size of a categorical predictor gives the change in log odds of being at least one level higher on the ordinal COVID-19 severity scale compared with the reference category of the predictor variable, while for a continuous predictor, it gives the change in odds of being one level higher on the ordinal COVID-19 severity scale for a unit increase in the continuous predictor. More details about assumptions of the proportional odds model are provided in online supplemental methods.

Factors potentially associated with the COVID-19 outcome considered in the models were age, sex, smoking habits (ever, unknown/missing, never), pandemic calendar period (until 15 June 2020, 16 June 2020 to 31 December 2020, 1 January 2021 and later), key comorbidities (chronic obstructive pulmonary disease (COPD) or asthma, other chronic lung disease, chronic kidney disease (CKD), hypertension, other cardiovascular disease (CVD), obesity, diabetes, cancer), IMID diagnostic category, IMID disease activity as per physician's global assessment (remission/low vs moderate/high), DMARD treatment prior to COVID-19 diagnosis, GC use and NSAID use.

For patients classified as having more than one IMID or being treated with more than one of the medications of interest, we created a hierarchy based on clinical expertise to categorise patients. This way, non-overlapping (mutually exclusive) categories are obtained, allowing a clear reference group for interpretation of the regression models, and avoiding collinearities. Patients labelled as having both PsA and axSpA were counted as PsA patients. Patients receiving multiple csDMARDs were grouped according to the following hierarchy: cyclosporine>sulfasalazine>leflunomide>methotrexate>antimalarials, where 'A>B' means 'A has priority over B'. Patients receiving a b/tsDMARD and additionally a csDMARD were considered in the model solely in the b/tsDMARD group (ie, b/tsDMARD>csDMARD).

We tested four two-way additive interactions in the models: hypertension and CVD; obesity and diabetes; cancer and smoking habits; and disease activity and prednisolone-equivalent GC use. Online supplemental methods provide more details regarding statistical interactions.

To account for heterogeneity between participating countries regarding healthcare systems and infection dynamics, countries were considered as random effects in the regression analyses. To appropriately estimate the well-established non-linear effect of age on the outcome of SARS-CoV-2 infection, we included restricted cubic splines in the regression models. Four knots were chosen for most analyses, while three knots were chosen for the outcome mortality and the disease-specific analyses due to the limited effective sample size.¹⁹

Missing data were handled using multiple imputation; results of the logistic regression analyses for 10 imputed datasets were pooled by Rubin's rules. As disease activity was missing for all patients entered from France in the C19-GRA registry, country-level life expectancy was used in the imputation model to explain potential structural differences in disease activity between countries not accounted for in the patient-level data (data from 2018, source: <http://hdr.undp.org/>). For more details regarding excluded patients and handling of missing data, refer to online supplemental methods.

IMIDs differ regarding the DMARDs approved for their treatment. To explore the impact of this heterogeneity on the associations of interest, in addition to the primary analysis with all patients, diagnostic categories were defined, and stratified secondary analyses were undertaken separately for patients with PsO, PsA and axSpA.

The following sensitivity analyses were also performed to examine the robustness of our findings: (1) analysis limited to patients with confirmed or highly likely COVID-19; (2) analysis using the alternative binary outcome 'hospitalisation'; (3) analysis using the alternative binary outcome 'death'. In the model using death as dependent variable, comorbidities were analysed as an independent binary variable (3 or more comorbidities vs less than 3), to minimise the risk of overfitting. Data were considered statistically significant for p values<0.05. All analyses were conducted in SAS (V.9.4) and R (V.4.0.4).

RESULTS

Study sample and baseline characteristics

The study population included 5045 cases, of which 921 (18.3%) were patients with PsO, 2293 (45.5%) with PsA, and 1831 (36.3%) with axSpA. Overall, the mean age was 50 years (SD 13.5), just over half were male (51.7%) and most were from Europe (77.5%) (table 1). Cases were reported fairly equally across the three pandemic time periods. Most cases had disease (IMIDs) in remission or minimal/low disease activity (82.7%). About half had no key comorbidities reported (52.9%). Of those with comorbidities, the most reported were hypertension (26.5%) and obesity (21.1%). Any csDMARD use was reported in 30.3%, with methotrexate as the most common (23.4%). Only 5.6% reported using sulfasalazine. bDMARD use was reported in 65.7% (TNFi 45.6%, IL17i 12.1%, IL-23i/IL-12+23i 8.1%). Only 1.2% reported JAKi use. Baseline GC use was reported in only 7.3% (4.6%, 0–7.5 mg/day and 1.4%, >7.5 mg/day) and NSAID use in 24%.

When stratified by condition (table 1), the main notable differences were that individuals with PsA were older (mean 53.2 years vs 46.9 years in axSpA and 48.4 years in PsO), a higher proportion of those with PsA had hypertension (32.8% vs 21.2% in axSpA and 21.3% in PsO) and a higher proportion of those with PsO were obese (29.2% vs 23% in PsA and 14.5% in axSpA). csDMARDs were most used among individuals with PsA (46.6% vs 19.3% in axSpA and 11.6% in PsO) while bDMARDs were most used among individuals with axSpA (73.6% vs 58.5% in PsA and 68.1% in PsO). Baseline GC usage was low overall but differed notably between the groups, with almost none in PsO (0.7%) vs 10.7% in PsA and 6.3% in axSpA. There was no difference across disease groups with regard to disease activity.

When stratified by medication group (online supplemental table 1), patients not taking DMARDs were slightly younger (mean 49.9 years) than patients taking DMARDs (range from 50 to 56.2 years, depending on the DMARD group) except for IL-17i/IL-23i/IL12+23i (mean 49.9 years) and TNFi (mean 48.3 years). Moreover, patients not taking DMARDs were slightly less often in remission/low disease activity (71.%) than patients taking DMARDs (range from 80.5% to 86.1%, depending on the DMARD group) except for JAKi (65.3% in remission/low disease activity).

COVID-19 outcomes

Baseline characteristics of the study population stratified by COVID-19 outcome are shown in online supplemental table 2. Most patients (4220, 83.6%) were not hospitalised, 736 (14.6%) were hospitalised and 89 (1.8%) died. The frequency of hospitalisation (without death) and death were slightly higher in PsA (17.1% and 2.2%, respectively), compared with axSpA (12.5% and 1.4%, respectively) and PsO (12.5% and 1.3%, respectively) (table 1).

Associations of baseline characteristics with COVID-19 severity

The results of the primary multivariable ordinal logistic regression model are shown in table 2 and the relationship between age and probability of hospitalisation and death is shown in figure 1.

Age was associated with COVID-19 severity in a non-linear way (stronger association for older age groups). Hypertension without CVD (OR 1.25, 95% CI 1.01 to 1.55), CVD without hypertension (OR 1.87, 95% CI 1.21 to 2.90), COPD or asthma (OR 1.75, 95% CI 1.33 to 2.31), other lung disease (OR 2.54, 95% CI 1.64 to 3.93), CKD (OR 2.32, 95% CI 1.50 to 3.58),

Table 1 Baseline characteristics of the study population (total and stratified by immune-mediated inflammatory disease diagnosis)

Parameter	Psoriatic arthritis	Axial spondyloarthritis	Psoriasis (without arthritis)	Total
N	2293	1831	921	5045
General				
Age (years)	53.2 (12.8)	46.9 (13.4)	48.4 (13.6)	50 (13.5)
≤30 years	110 (4.8)	211 (11.5)	100 (10.9)	421 (8.3)
31–50 years	785 (34.2)	900 (49.2)	400 (43.4)	2085 (41.3)
51–65 years	1032 (45)	567 (31)	336 (36.5)	1935 (38.4)
66–75 years	280 (12.2)	109 (6)	59 (6.4)	448 (8.9)
>75 years	86 (3.8)	44 (2.4)	26 (2.8)	156 (3.1)
Male sex	1053 (45.9)	996 (54.4)	557 (60.5)	2606 (51.7)
Ever-smoker	566 (33.2) (N=1705) (Missing=588)	313 (23.9) (N=1311) (Missing=520)	334 (36.3) (N=921) (Missing=0)	1213 (30.8) (N=3937) (Missing=1108)
Regions				
African Region	5 (0.2)	5 (0.3)	4 (0.4)	14 (0.3)
Eastern Mediterranean Region	34 (1.5)	31 (1.7)	7 (0.8)	72 (1.4)
European Region	1707 (74.4)	1396 (76.2)	805 (87.4)	3908 (77.5)
North American Region	454 (19.8)	221 (12.1)	53 (5.8)	728 (14.4)
South American Region	62 (2.7)	159 (8.7)	46 (5)	267 (5.3)
South-East Asian Region	10 (0.4)	8 (0.4)	3 (0.3)	21 (0.4)
Western Pacific Region	21 (0.9)	11 (0.6)	3 (0.3)	35 (0.7)
Time period				
Until 15 June 2020	744 (32.4)	564 (30.8)	417 (45.3)	1725 (34.2)
From 16 June 2020 to 31 December 2020	1043 (45.5)	880 (48.1)	340 (36.9)	2263 (44.9)
1 January 2021 and later	506 (22.1)	387 (21.1)	164 (17.8)	1057 (21)
Ordinal outcome				
Not hospitalised, no death	1850 (80.7)	1576 (86.1)	794 (86.2)	4220 (83.6)
Hospitalised, no death	392 (17.1)	229 (12.5)	115 (12.5)	736 (14.6)
Death	51 (2.2)	26 (1.4)	12 (1.3)	89 (1.8)
Disease activity				
	(N=2014) (Missing=279)	(N=1288) (Missing=532)	(N=920) (Missing=1)	N=4233 (Missing=812)
Remission/low disease activity	1670 (82.9)	1090 (83.9)	740 (80.4)	3500 (82.7)
Moderate/high disease activity	344 (17.1)	209 (16.1)	180 (19.6)	733 (17.3)
Comorbidities				
	(N=2266) (Missing=27)	(N=1809) (Missing=22)	(N=921) (Missing=0)	N=4996 (Missing=49)
Hypertension	744 (32.8)	383 (21.2)	196 (21.3)	1323 (26.5)
Cardiovascular disease	179 (7.9)	88 (4.9)	71 (7.7)	338 (6.8)
COPD or asthma	185 (8.2)	114 (6.3)	62 (6.7)	361 (7)
Other chronic lung disease	47 (2.1)	30 (1.7)	22 (2.4)	99 (2)
Chronic kidney disease	60 (2.6)	24 (1.3)	17 (1.8)	101 (2)
Diabetes	316 (13.9)	126 (7)	120 (13)	562 (11.2)
Cancer	65 (2.9)	26 (1.4)	24 (2.6)	115 (2.3)
Obesity	522 (23)	262 (14.5)	269 (29.2)	1053 (21.1)
No of comorbidities	1 (1.2)	0.6 (1)	1 (1.2)	0.8 (1.1)
No comorbidity	1077 (47.5)	1124 (62.1)	442 (48)	2643 (52.9)
1 comorbidity	573 (25.3)	418 (23.1)	248 (26.9)	1239 (24.8)
2 comorbidities	350 (15.4)	181 (10)	127 (13.8)	658 (13.2)
≥3 comorbidities	266 (11.7)	86 (4.8)	104 (11.3)	456 (9.1)
DMARDs				
(monotherapy or combination therapy)				
csDMARDs	1068 (46.6)	353 (19.3)	107 (11.6)	1528 (30.3)
Antimalarials	30 (1.3)	7 (0.4)	0	37 (0.7)
Methotrexate	889 (38.8)	194 (10.6)	100 (10.9)	1183 (23.4)
Leflunomide	94 (4.1)	13 (0.7)	0	107 (2.1)
Sulfasalazine	119 (5.2)	164 (9)	0	283 (5.6)
Cyclosporine	11 (0.5)	0	8 (0.9)	19 (0.4)
bDMARDs	1341 (58.5)	1347 (73.6)	627 (68.1)	3315 (65.7)
TNF inhibitors	895 (39)	1176 (64.2)	227 (24.6)	2298 (45.6)

Continued

Table 1 Continued

Parameter	Psoriatic arthritis	Axial spondyloarthritis	Psoriasis (without arthritis)	Total
N	2293	1831	921	5045
IL-17 inhibitors	301 (13.1)	164 (9)	145 (15.7)	610 (12.1)
IL-23/IL-12+23 inhibitors	145 (6.3)	7 (0.4)	255 (27.7)	407 (8.1)
tsDMARDs	111 (4.8)	11 (0.6)	19 (2.1)	141 (2.8)
JAK inhibitors	51 (2.2)	11 (0.6)	0	62 (1.2)
Apremilast	60 (2.6)	0	19 (2.1)	79 (1.6)
No DMARD treatment	234 (10.2)	309 (16.9)	179 (19.4)	722 (14.3)
Other therapies				
Glucocorticoids (#)	241 (10.7) (N=2242) (Missing=51)	110 (6.3) (N=1760) (Missing=71)	6 (0.7) (N=921) (Missing=0)	357 (7.3) (N=4923) (Missing=122)
0 mg/day <glucocorticoids ≤7.5 mg/day	167 (7.5) (N=2215) (Missing=78)	54 (3.1) (N=1724) (Missing=107)	3 (0.3) (N=919) (Missing=2)	224 (4.6) (N=4858) (Missing=187)
Glucocorticoids >7.5 mg/day	46 (2.1) (N=2215) (Missing=78)	19 (1.1) (N=1724) (Missing=107)	1 (0.1) (N=919) (Missing=2)	66 (1.4) (N=4858) (Missing=187)
NSAIDs	512 (24.5) (N=2094) (Missing=199)	553 (35.5) (N=1559) (Missing=272)	32 (3.5) (N=921) (Missing=0)	1097 (24) (N=4574) (Missing=471)
Acitretin	3 (0.1)	0	26 (2.8)	29 (0.6)

Data are N (column %) for categorical variables or mean (SD) for continuous variables. Table includes patients diagnosed with psoriasis without arthritis, psoriatic arthritis or axial spondyloarthritis, with a non-missing ordinal outcome and non-missing values for age, sex, time period and DMARDs. Further, patients receiving multiple b/tsDMARDs or DMARDs not typical for the three diagnoses were excluded, as well as patients labelled as having additional inflammatory rheumatic diseases (529 patients excluded in total). Data refer to patients with non-missing values for the respective variable; total N for patients with non-missing values is given in parentheses for variables with missing values; the total number of missing values is also given in parenthesis, for the applicable variables. (#) Includes patients with a missing glucocorticoid dosage. bDMARD, biological disease-modifying anti-rheumatic drugs; BMI, body mass index; COPD, chronic obstructive pulmonary disease; csDMARD, conventional synthetic DMARD; DMARD, disease-modifying antirheumatic drug; IL, interleukin; JAK, Janus kinase; N, number; NSAID, non-steroidal anti-inflammatory drugs; TNF, tumour necrosis factor; tsDMARD, targeted synthetic DMARD.

cancer in patients with missing data on smoking (OR 2.89, 95% CI 1.19 to 6.97), obesity without diabetes (OR 1.35, 95% CI 1.07 to 1.70), diabetes without obesity (OR 1.84, 95% CI 1.38 to 2.45), and coexistence of obesity and diabetes (OR 1.89, 95% CI 1.34 to 2.68) were associated with greater odds of worse COVID-19 severity compared with referents without each condition. Male sex was associated with 1.54 times greater odds of worse COVID-19 severity compared with female sex (95% CI 1.30 to 1.83). Moderate/high disease activity (with or without GC use) and remission/low disease activity (with GC use) were associated with higher odds of worse COVID-19 outcomes compared with being in remission/low disease activity without GC use (OR ranging from 1.39 to 2.23). Later pandemic time periods were associated with lower odds of worse COVID-19 severity compared with the baseline period of March 2020–15 June 2020 (OR 0.42, 95% CI 0.34 to 0.51 for 16 June 2020–31 December 2020; OR 0.52, 95% CI 0.41 to 0.67 for 1 January 2021 and later). Compared with PsA, PsO was associated with less COVID-19 severity (OR 0.49, 95% CI 0.37 to 0.65). For medication classes, none were associated with higher odds of COVID-19 severity. TNFi, IL17i and IL-23i/IL-12+23i all demonstrated reduced odds of severe COVID-19 outcomes (OR 0.57, 95% CI 0.44 to 0.73; OR 0.62, 95% CI 0.45 to 0.87; OR 0.67, 95% CI 0.45 to 0.98, respectively). Finally, NSAID use compared with no use of NSAIDs was associated with lower odds of severe COVID-19 outcomes (OR 0.77, 95% CI 0.60 to 0.98).

Stratified analyses

When stratified by condition, results were similar to the primary model (online supplemental table 3) and online supplemental

figures 1-3) with the following notable exceptions: hypertension alone and CVD alone were only significantly associated with the COVID-19 severity outcome among those with axSpA (OR 1.49, 95% CI 1.01 to 2.19; and OR 2.77, 95% CI 1.25 to 6.13; respectively) whereas COPD and asthma were associated with the COVID-19 severity outcome only among those with PsA (OR 1.95, 95% CI 1.34 to 2.82). The association of IL-23i/IL-12+23i with less severe COVID-19 outcomes was only statistically significant among those with PsO (OR 0.43, 95% CI 0.23 to 0.82); however, IL-23i/IL-12+23i were not used among patients with axSpA (not efficacious/licensed for this indication) and numbers were lower for PsA.

Sensitivity analyses

The results of sensitivity analyses are shown in online supplemental tables 4-6 and online supplemental figures 4-6. When restricting the analysis to confirmed COVID-19 cases (n=4176), multivariable model results were consistent with the primary model. Results were also similar to the primary model for the binary outcome of hospitalisation.

For the binary outcome of death, male sex (OR 2.00, 95% CI 1.22 to 3.26), having three or more comorbidities (OR 3.34, 95% CI 1.98 to 5.63) and baseline GC use (OR 1.91, 95% CI 1.002 to 3.64) remained associated with the outcome of interest. In this model, TNFi and IL17i continued to demonstrate reduced odds of severe COVID-19 outcomes (OR 0.50, 95% CI 0.26 to 0.98 and OR 0.11, 95% CI 0.02 to 0.51; respectively). However, sulfasalazine use (OR 2.64, 95% CI 1.13 to 6.17) and JAKi use (OR 7.49, 95% CI 2.61 to 21.47) were associated with greater odds of severe COVID-19 outcomes in this model.

Table 2 Multivariable ordinal logistic regression analysis of factors associated with COVID-19 severity (primary model, all patients)

N total		5045		
N deaths/hospitalisations without death/neither		89/736/4220		
	N deaths/hospitalisations without death/neither	OR	95% CI	
Male sex (vs female)	57/419/2130	1.54	1.30	1.83
Pandemic time period				
Until 15 June 2020	45/395/1285	1	(Reference)	
16 June 2020–31 December 2020	28/217/2018	0.42	0.34	0.51
1 January 2021 and later	16/124/917	0.52	0.41	0.67
Comorbidities				
Hypertension alone (vs no hypertension, no CVD)	28/242/847	1.25	1.01	1.55
CVD alone (vs no hypertension, no CVD)	7/38/76	1.87	1.21	2.90
CVD and hypertension (vs no hypertension, no CVD)	21/63/136	1.41	0.98	2.02
COPD or asthma	21/87/257	1.75	1.33	2.31
Other lung disease	11/34/55	2.54	1.64	3.93
Chronic kidney disease	14/42/46	2.32	1.50	3.58
Obesity alone (vs no obesity, no diabetes)	11/138/676	1.35	1.07	1.70
Diabetes mellitus alone (vs no obesity, no diabetes)	15/102/212	1.84	1.38	2.45
Obesity and diabetes mellitus (vs no obesity, no diabetes)	14/61/162	1.89	1.34	2.68
Cancer and known smoking habits (vs no cancer, never smoked)	4/29/57	1.13	0.68	1.88
Cancer and unknown smoking habits (vs no cancer, never smoked)	5/7/13	2.89	1.19	6.97
No cancer and ever smoked or unknown smoking habits (vs no cancer, never smoked)	38/281/1933	0.87	0.71	1.06
Rheumatic disease				
Psoriatic arthritis	51/392/1850	1	(Reference)	
Axial spondyloarthritis	26/229/1576	1.07	0.86	1.33
Psoriasis (without arthritis)	12/115/794	0.49	0.37	0.65
Medication				
No DMARD therapy	21/128/573	1	(Reference)	
Antimalarials	0/4/14	1.08	0.30	3.84
Methotrexate	13/133/449	1.03	0.76	1.40
Leflunomide	2/16/42	1.08	0.55	2.11
Sulfasalazine	12/32/136	1.41	0.91	2.17
Cyclosporine	0/1/18	0.31	0.04	2.47

Continued

Table 2 Continued

N total		5045		
N deaths/hospitalisations without death/neither		89/736/4220		
	N deaths/hospitalisations without death/neither	OR	95% CI	
TNF inhibitors	24/248/2026	0.57	0.44	0.73
IL-17 inhibitors	2/88/520	0.62	0.45	0.87
IL-23/IL-12+23 inhibitors	5/58/344	0.67	0.45	0.98
JAK inhibitors	7/10/45	1.58	0.83	3.01
Apremilast	3/18/58	1.04	0.57	1.91
Disease activity (DA) and glucocorticoids (GCs)				
Remission/low DA, no GCs	57/516/3358	1	(Reference)	
Remission/low DA, GCs	13/59/177	1.97	1.39	2.79
Moderate/high DA, no GCs	15/130/604	1.39	1.09	1.76
Moderate/high DA, GCs	5/32/82	2.23	1.39	3.58
NSAIDs	16/151/1072	0.77	0.60	0.98

Results for ordinal mixed effects logistic regression analysis in all patients (primary model). Shown are fixed effects, random effects for country are not shown. Missing values are imputed via multiple imputation, patient numbers may thus be rounded. The model was additionally adjusted for age employing four-knot restricted cubic splines. Significant associations highlighted in bold.

bDMARD, biological disease-modifying antirheumatic drug; BMI, body mass index; COPD, chronic obstructive pulmonary disease; csDMARD, conventional synthetic DMARD; CVD, cardiovascular disease; DMARD, disease-modifying antirheumatic drug; IL, interleukin; JAK, Janus kinase; N, number; NSAID, non-steroidal antiinflammatory drug; TNF, tumour necrosis factor; tsDMARD, targeted synthetic DMARD.

Discussion

In this registry-based study of individuals with PsO, PsA and axSpA with SARS-CoV-2 infection, we found that known risk factors for the general population (older age, the presence of comorbidities) and for IMIDs overall (higher disease activity, higher baseline GC usage) were associated with more severe COVID-19 outcomes. In addition, a diagnosis of COVID-19 in a later time period during the pandemic was associated with lower disease severity compared with early 2020. Consistent with previous studies, baseline TNFi use was associated with lower odds for severe COVID-19 outcomes; we also found that IL17i and IL-23i/IL-12+23i use had similar associations with lower odds for severe COVID-19 outcomes.

The findings of our study reiterate known risk factors in both the general population and among people with IMIDs: older age, male sex and presence of comorbidities, specifically cardiometabolic and pulmonary conditions, were associated with more severe COVID-19 outcomes.^{5,6} Our findings that disease activity and GC usage at baseline have an additive interaction are consistent with prior findings in the C19-GRA registry.²⁰

In this study, baseline use of TNFi was associated with lower odds of severe COVID-19 outcomes. This was previously shown in the C19-GRA registry,⁷ in a combined rheumatic disease, inflammatory bowel disease (IBD) and PsO analysis,⁸ and in a US-based administrative claims database study among individuals with RA.²¹ Mechanistic plausibility for trialling TNFi therapies for COVID-19 treatment has been discussed in the literature.^{22,23} These therapies neutralise TNF, a major cytokine

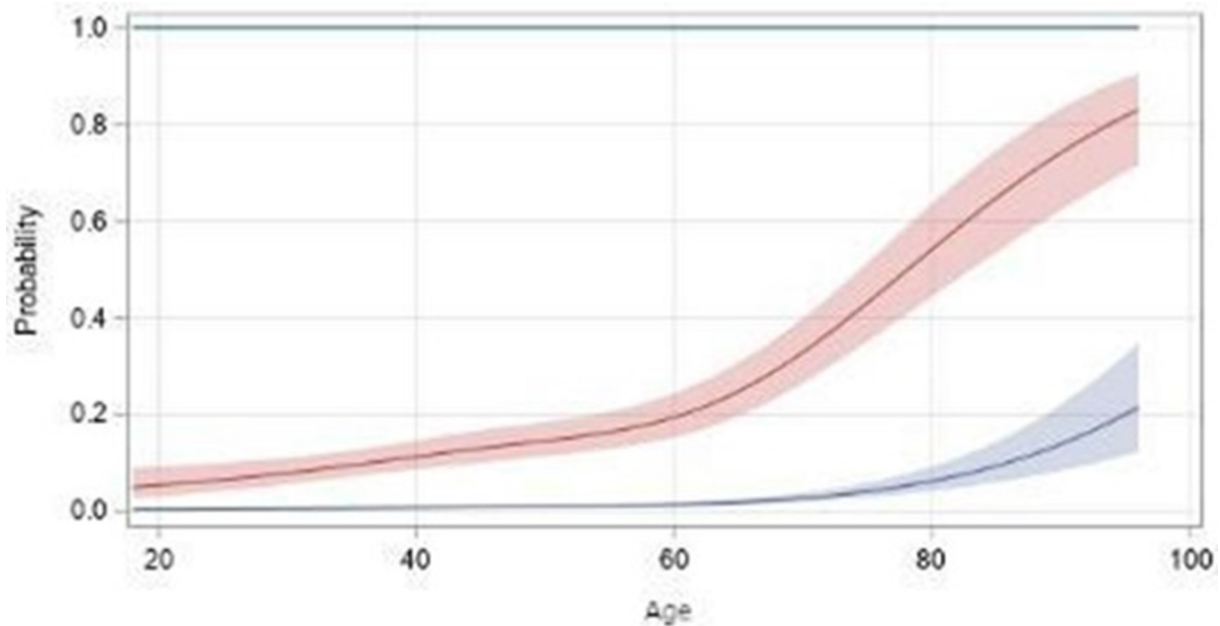


Figure 1 Relationship between age and probability of hospitalisation (red) and death (blue) estimated by four-knot restricted cubic splines, with 95% CIs (primary model, ordinal outcome, all patients).

in the excess inflammatory phase of COVID-19, and several trials are ongoing. A recent preprint announced results of a large randomised, placebo-controlled clinical trial led by the National Institutes of Health showing that treating adults hospitalised with COVID-19 with infliximab (a TNFi) did not significantly shorten time to recovery but did improve 14-day clinical status and substantially reduced 28-day mortality compared with standard of care²⁴—the peer-reviewed publication is awaited.

We also demonstrated that using IL17i and IL-23i/IL-12+23i was also associated with lower odds of severe COVID-19 outcomes. Prior population-level data from Israel and the UK have shown that the use of IL-17i was not associated with worse COVID-19 outcomes.^{25 26} At the same time, case reports and case series have also suggested that IL-17 and IL-23 inhibition may not have a negative effect on the course of COVID-19,^{27–29} though further inference on whether exposure to these medications might be associated with better COVID-19 outcomes is limited. IL-17 may play a pathogenic role in acute respiratory distress syndrome and lung inflammation associated with severe COVID-19. Patients with COVID-19 who experience pulmonary complications have increased and activated Th17 cell populations, and lung damage and hyperinflammation are linked to these patients' increased Th17 cell responses.^{30 31} The anti-IL-17 monoclonal antibody netakimab improved survival in a small clinical trial in patients with COVID-19; it decreased lung lesion volume and the need for oxygen support.³² However, in another study, netakimab therapy improved some clinical parameters and decreased C reactive protein levels, but it had no effect on the need for mechanical ventilation or patient survival in COVID-19 patients.³³ Suppressing inflammation via a variety of mechanisms has been shown to improve COVID-19 outcomes in people with severe disease (ie, GC, IL-6i, JAKi, maybe TNFi). Whether IL-17 will also have a role remains to be determined and requires further study.^{34 35} Importantly, in our study, we report associations and therefore we caution against interpreting our estimates causally, as the possibility of selection bias and unmeasured confounding cannot be excluded.

Apremilast was not associated with the severity of COVID-19 in patients with PsO/PsA. Although the number of patients taking apremilast was low, these data are important because they add to limited previous evidence of a favourable safety profile of apremilast on COVID-19 severity in patients with these conditions.^{36–38}

The finding that baseline NSAID use was associated with less COVID-19 severity is interesting but should be interpreted with caution. NSAID use is particularly prone to reporting bias, and inconsistencies in reporting might have resulted from the fact that we did not specify a minimal duration of a continuous treatment with NSAID and did not use a standardised questionnaire to collect NSAID data (eg, type of NSAID, dose and duration of treatment). General population studies in the UK and Denmark have not found associations between NSAID use and COVID-19-related hospitalisation or death.^{39–41} In our study, this association was seen particularly in individuals with axSpA and may be related to milder disease and/or well controlled of disease activity; confounding by indication cannot be excluded.

Finally, the results of one sensitivity analysis indicated that use of sulfasalazine and JAKi were associated with higher odds of death (binary outcome) due to COVID-19, though there were no associations with the ordinal COVID-19 severity outcome or with hospitalisation (binary outcome). In the C-19 GRA registry, we previously found an association of sulfasalazine use with worse COVID-19 outcome,⁷ a finding which was also seen in initial analyses of the Surveillance Epidemiology of Coronavirus Under Research Exclusion (IBD) database⁴² though later analyses were null.⁴³ While there are biologically plausible effects of sulfasalazine on SARS-CoV-2 viral entry,⁴⁴ our results may be due to residual confounding. The association of JAKi usage with COVID-19 outcomes is consistent with findings from some studies focused on people with RA.^{9 45} However, results from this sensitivity analysis should be interpreted with caution as the proportion of patients on JAKi was low (and no patients with PsO were taking this medication) and the respective 95% CI was wide.

Our study has several strengths, including the international nature of the combined registries, the large sample size and the granularity of information regarding IMiD medications and disease activity. Our study also has limitations. First, the C19-GRA and PsoProtect registries were dependent on voluntary provider entry of cases, and there may be bias towards cases with more severe COVID-19 and those on DMARD therapy, as mostly secondary care clinicians were submitting cases. As such, proportions of events in our study sample should not be interpreted as incidence rates. Second, while we tried to mitigate the impacts of selection bias and confounding by indication, it is possible that our results may still be biased. However, we performed a series of sensitivity analyses to confirm the robustness of our findings, including restricting to a sample of confirmed cases of COVID-19, and our results were consistent across these additional analyses. Third, although we were able to adjust for several potential confounders in our models, there may still be residual unmeasured confounding. We did not have data available on disease duration or prior medication use, apart from what was reported at the time of COVID-19 diagnosis. Finally, vaccination status was not available for the patients in this dataset; however, the model adjustment for pandemic calendar period used in this study may act as a surrogate for vaccination status.

In conclusion, more severe COVID-19 outcomes in PsO, PsA and axSpA are largely associated with age, comorbidities, active disease and GC use. None of the bDMARDs typically used in PsO, PsA and axSpA, including TNFi, IL-17i and IL-23i/IL-12+23i, were associated with severe COVID-19 outcomes, and no biologics-specific differences were found. Our findings will help clinicians, scientific societies and policy makers worldwide develop tailored management strategies for patients with PsO, PsA and axSpA during COVID-19 waves or similar future respiratory pandemics.

Author affiliations

¹Centre for Rheumatology & Department of Neuromuscular Diseases, University College London, London, UK

²National Institute for Health Research (NIHR) University College London Hospitals (UCLH) Biomedical Research Centre, University College London Hospitals NHS Foundation Trust, London, UK

³Rheumatology, Northwick Park Hospital, London North West University Healthcare NHS Trust, London, UK

⁴Epidemiology and Health Services Research, German Rheumatism Research Center (DRFZ Berlin), Berlin, Germany

⁵St John's Institute of Dermatology, Guy's and St Thomas' NHS Foundation Trust and King's College London, London, UK

⁶Section of Rheumatology, Department of Medicine, Boston University School of Medicine, Boston, Massachusetts, USA

⁷INSERM, Institut Pierre Louis d'Epidémiologie et de Santé Publique, Sorbonne Université, Paris, France

⁸AP-HP, Rheumatology Department, Hôpital Universitaire Pitié Salpêtrière, Paris, France

⁹Department of Medical and Molecular Genetics, School of Basic and Medical Biosciences, Faculty of Life Sciences and Medicine, King's College London, London, UK

¹⁰Department of Internal Medicine III, Jena University Hospital – Friedrich Schiller University, Jena, Germany

¹¹Rheumatology and Clinical Immunology, Charité University Medicine, Berlin, Germany

¹²Epidemiology and Health Services Research, German Rheumatism Research Center Berlin, Berlin, Germany

¹³Rheumatology, Pitié-Salpêtrière hospital, AP - HP, Paris, France

¹⁴Hospital Italiano de Córdoba, Córdoba, Argentina

¹⁵Rheumatology Division, Faculdade de Medicina da Universidade de São Paulo (FMUSP), São Paulo, Brazil

¹⁶Dermatology Centre, Salford Royal NHS Foundation Trust, Manchester, UK

¹⁷National Institute of Health Research Manchester Biomedical Research Centre, Manchester University NHS Foundation Trust, Manchester Academic Health Science Centre, Manchester, UK

¹⁸Academic Rheumatology Centre, Università degli Studi di Torino, Torino, Italy

¹⁹Assistance Publique, Hôpital Cochin, Hôpitaux de Paris & Université de Paris, Paris, France

²⁰Unité Mixte AP-HP/ Institut Pasteur, Institut Pasteur, Paris, France

²¹Rheumatology, Franche-Comté University and University Teaching Hospital (CHRU), Besançon, France

²²Research Unit, Colegio Mexicano de Reumatología, Mexico City, Mexico

²³People with Arthritis and Rheumatism (PARE), EULAR, Zurich, Switzerland

²⁴Portuguese League Against Rheumatic Diseases (LPCDR), Lisbon, Portugal

²⁵European Alliance of Associations for Rheumatology (EULAR), Kilchberg, Switzerland

²⁶Yale School of Medicine, Yale University, New Haven, Connecticut, USA

²⁷Department of Health Research Methods, Evidence, and Impact, McMaster University, Hamilton, Ontario, Canada

²⁸Canadian Arthritis Patient Alliance, Toronto, Ontario, Canada

²⁹Rheumatology Unit, Internal Medicine Service, Hospital Italiano de Buenos Aires, Buenos Aires, Argentina

³⁰Instituto Universitario Hospital Italiano de Buenos Aires, Buenos Aires, Argentina

³¹Rheumatology, Hospital Universitário Pedro Ernesto, Universidade do Estado do Rio de Janeiro (UERJ), Rio de Janeiro, Brazil

³²Clínica Omura Medicina Diagnóstica, São Paulo, Brazil

³³Rheumatology, Centro Hospitalar Universitário do Algarve, Faro, Portugal

³⁴Instituto Português de Reumatologia, Lisbon, Portugal

³⁵EpiDoC Unit, CEDOC, Nova Medical School, Lisbon, Portugal

³⁶University of Colorado School of Medicine, Denver, Colorado, USA

³⁷St John's Institute of Dermatology, School of Basic & Medical Biosciences, Faculty of Life Sciences & Medicine, King's College London, London, UK

³⁸Program in Rheumatology, Boston Children's Hospital, Boston, Massachusetts, USA

³⁹Division of Rheumatology, Allergy, and Immunology, Massachusetts General Hospital, Boston, Massachusetts, USA

⁴⁰Centre for Epidemiology Versus Arthritis, The University of Manchester, Manchester Academic Health Science Centre, Manchester, UK

⁴¹University of California, San Francisco, California, USA

⁴²Rheumatology, Centro Hospitalar de Trás-os-montes e Alto Douro (CHTMAD), Vila Real, Portugal

⁴³Division of Rheumatology, Department of Medicine, University of California, San Francisco, California, USA

⁴⁴Instituto de Salud Musculoesquelética (INMUSC), Madrid, Spain

⁴⁵Rheumatology, Hospital São Paulo, Universidade Federal de São Paulo (UNIFESP), São Paulo, Brazil

⁴⁶Hospital de Agudos Ramos Mejía, Ciudad Autónoma de Buenos Aires, Argentina

⁴⁷Centro Privado de Medicina Nuclear and Clínica Villa Dalcar, Córdoba, Argentina

⁴⁸Clínica Villa Dalcar, Río Cuarto, Córdoba, Argentina

⁴⁹Centre for Rheumatic Diseases, King's College London, London, UK

⁵⁰Boston University School of Medicine, Boston, Massachusetts, USA

⁵¹Lupus Foundation of America, Washington, District of Columbia, USA

⁵²SSD Reumatologia, ASO Santa Croce e Carle, Cuneo, Italy

⁵³Rheumatology, University Health Network, Toronto, Ontario, Canada

⁵⁴Senior Scientist, Schroder Arthritis Institute, University of Toronto, Toronto, Ontario, Canada

⁵⁵Healthpartners, St. Paul, Minnesota, USA

⁵⁶Department of Medicine, University of Otago Wellington, Wellington, New Zealand

⁵⁷Department of Internal Medicine II, University Hospitals Giessen, Giessen, Germany

⁵⁸Justus Liebig University Giessen, Giessen, Germany

⁵⁹Centre for Genetics and Genomics Versus Arthritis, Centre for Musculoskeletal Research, The University of Manchester, Manchester, UK

⁶⁰Pfizer, Inc, New York, New York, USA

⁶¹Rheumatology, Aix-Marseille-University, Marseille, France

⁶²Rheumatology, APHM, Marseille, France

⁶³Rheumatology, Department of Clinical Sciences Lund, Lund University, Lund, Sweden

⁶⁴Rheumatology, Skåne University Hospital, Lund, Sweden

⁶⁵Rheumatology Division, University Hospital Fundación Santa Fé de Bogotá, Bogotá, Colombia

⁶⁶School of Medicine, Universidad El Bosque, Bogotá, Colombia

⁶⁷Clinical Epidemiology Program, Division of Rheumatology, Allergy, and Immunology, Massachusetts General Hospital, Boston, Massachusetts, USA

⁶⁸Harvard Medical School, Boston, Massachusetts, USA

⁶⁹Dermatology Centre, Salford Royal NHS Foundation Trust, The University of Manchester, Manchester, UK

⁷⁰School of Clinical Medicine, University of Queensland, Herston, Queensland, Australia

⁷¹Rheumatology, Royal Brisbane and Woman's Hospital, Metro North Hospital & Health Service, Herston, Queensland, Australia

Twitter Pedro M Machado @pedromcmachado, Jean Liew @rheum_cat, Corinne Miceli-Richard @CorinneMiceli, Deshire Alpizar Rodriguez @deshire_alpizar, Emily Sirotych @emilysirotych, Frederico Rajão Martins @fredericorajao, Jonathan Hausmann @hausmannmd, Loreto Carmona @carmona_loreto, Mark Yates @

yatesmark1, Rebecca Grainger @drbeckyg, Saskia Lawson-Tovey @saskiaamber, Wilson Bautista-Molano @wabatistam, Zachary S Wallace @zach_wallace_md and Philip C Robinson @philprobinson

Acknowledgements We wish to thank all healthcare providers who entered data into the registry.

Collaborators COVID-19 Global Rheumatology Alliance (C19-GRA) Consortium: Shafiq Fatima (Akbar 124 Street Medical Group), Adriana de Oliveira Marinho (Acre State Hospital Foundation), Noreen Nasir (Aga Khan University Hospital, Karachi Pakistan), Hesham Hamoud (Al Azhar University Hospitals) Shradha Jatwani (Albert Einstein Medical Center, PA), Shanmuganandan Krishnan (APOLLO CLINIC), Alba Paula, Alvaro Andres Reyes Torres, Ana Bertoli, Andrea Baños, Boris Kisluk, Carla Gobbi, Carla Maldini, Carla Matellan, Carlevaris Leandro, Carolina Aeschlimann, Cecilia Goizueta, Cecilia Pisoni, Cecilia Romeo, Debora Guaglianone, Eugenia Picco, Fabian Risueño, Federico Nicolas Maldonado, Gelsomina Alle, Gimena Gómez, Gisela Subils, Gustavo Fabián Rodríguez Gil, Hernán Maldonado Ficco, Ivana Romina Rojas Tessel, Jonathan Eliseo Rebak, José Luis Velasco Zamora, Josefina Gallino Yanzi, Juan Alejandro Albiero, Julia Scafati, Julieta Silvana Morbiducci, Karen Roberts, Karina Cogo, Lorena Takashima, Luciana Casalla, Luciana Gonzalez Lucero, Ma. Alicia Lazaro, María Alejandra Cusa, María Alejandra Medina, María de la Vega, María Elena Calvo, María Isabel Quaglia, María J. Haye Salinas, María Julieta Gamba, María Marcela Schmid, María Severina, María Sol Castaños Menescardi, María Soledad Gálvez Elkin, María Victoria Martire, Mariana Pera, Marina Laura Werner, Mercedes García, Micaela Cosatti, Natalia Herscovich, Natalia Lili Cuchiari, Noelia German, Pablo Maid, Roberto Miguel Baez, Rodolfo Perez Alamino, Romina Nieto, Romina Tanten, Rosana Gallo, Rosana Quintana, Sabrina Porta, Sabrina Solange de la Vega Fernandez, Sandra Petruzzelli, Sebastián Moyano, Silvana Conti, Sofia Ornella, Susana Isabel Pineda, Tatiana Barbich, Vanessa Castro Coelho, Veronica Bellomio, Veronica Savio, Yohana Tissera (Argentine Society of Rheumatology), Angela Dahle, Anne Wolff, Archibald Skemp, Emily Pfeifer, Hammad Bajwa, Jeffrey Wilson, Jennifer Morgan, Jody Hargrove, Maren Hilton, Nicholas Lebedoff, Sara Baig, Susan Leonard, Vernon Berglund, Walter Dorman (Arthritis and Rheumatology Consultants, PA), Christopher Morris (Arthritis Associates of Kingsport), Michael Cannon (Arthritis Consultants of Tidewater), Marcela Posada (Artmedica), Antonio Carlos Ximenes, Felipe Omura, Flora Maria D Andrea Marcolino, Gecilmara Pileggi, Jose Roberto Silva Miranda (Artrocenter), Josephine Dhar (Ascension St. John Hospital), Ellison Smith, Julie Levengood, Kristin Gowin (Asheville Arthritis and Osteoporosis Center), Brahim Dahou (Association Rhumatologues Algériens Privés (ARAP)), Nicola Dalbeth (Auckland District Health Board), Eduardo Cepeda (Austin Diagnostic Clinic), Yves Piette (AZ Sint-Jan Brugge), Bea Maeyaert (AZ Sint-Lucas Brugge), Mieke Devinc (AZ Sint-Lucas Brugge), Karen Joyce Cortez (Baguio General Hospital and Medical Center), Selda ÇELİK (BAKIRKOY DR SADI KONUK EDUCATIONAL AND RESEARCH HOSPITAL, RHEUMATOLOGY DEPARTMENT, Istanbul), Ozan Cemal Icacan (Bakirköy Dr. Sadi Konuk Research And Training Hospital, Istanbul), Frances Stafford (Blackrock Clinic), Aarat Patel (Bon Secours Rheumatology Center), Lucy Thornton (Bradford Royal Infirmary), Derrick Todd, Jeffrey A. Sparks, Kristin D'Silva, Naomi Serling-Boyd, Tiffany Y-T Hsu, Zachary Wallace, (Brigham and Women's Hospital), Kendra Zuckerman (Bryn Mawr Medical Specialists), Suzanne Chapnick (Cambridge Health Alliance), Denise Hare, Tina Linehan (Capital Health Rheumatology), Laurie Bergstrom (Catalina Pointe Arthritis), Alain Sanchez Rodriguez (Centro Medico ABC), Beatriz Elena Zazueta-Montiel (Centro Medico del Angel), Angel Alejandro Castillo Ortiz (Centro Medico Las Americas), Jaime Hadid (Centro Medico Nacional 20 de Noviembre), Lilia Andrade Ortega (Centro Medico Nacional 20 de Noviembre ISSSTE), Xóchitl Jiménez (Centro Medico Naval), Erick Zamora Tehozol (Centro Medico Pensiones), Cummins Lue (CHI Little Rock Diagnostic Clinic), Ho So (Chinese University of Hong Kong), Mari Yamamoto (Chubu Rosai Hospital), Cassandra Calabrese (Cleveland Clinic) Sebastián Ibáñez (Clínica Alemana de Santiago), Juan Carlos Arana Ruiz (Clínica de Excelencia en Reumatología), Sergio Durán-Barragán (Clínica de Investigación en Reumatología y Obesidad), Lui Cajas (Clínica Universitaria Colombia - Centro Medico Providencia Sanitas), Tea Ahel Pavelić (Clinical Hospital Center Rijeka), Samuel Katsuyuki Shinjo (Clinical Hospital of Faculty of Medicine of University of Sao Paulo), Ricardo Xavier (Clinical Hospital of Porto Alegre), Michel Alexandre Yazbek (Clinical Hospital of University of Campinas), Montserrat Corteguera Coro (Complejo Asistencial Avila), Enrique Giraldo (Complejo Hospitalario), Anne-Marie Chassin-Trubert (Complejo Hospitalario San José), Sasha Dunt (Countess of Chester NHS Foundation Trust), Laura Muntean (County Emergency Hospital), Ileana Filipescu, Ioana Felea, Maria Magdalena Tamas, Simona Rednic (County Emergency Hospital, Cluj Napoca), Celia Fernandez (Cullman Internal Medicine), Barbara Goldstein (Denver Arthritis Clinic), Maria Greenwald (Desert Medical Advances), Branimir Anić (Div Clin Immunol Rheumatol; Dept Int Med, School of Med Zagreb, University Hospital Center Zagreb), Christopher Adams (East Alabama Medical Center), Jimmy Gene Villo, Rizza Navarro (East Avenue Medical Center), Arezou Khosroshahi (Emory University), Eva Strakova (Faculty Hospital Prešov), Nilzio Antonio da Silva (Faculty of Medicine of Goias Federal University), Ricardo Acayaba de Toledo (Faculty of Medicine of Sao Jose do Rio Preto), Babur Salim (Fauji Foundation Hospital), Sandra Lucia Euzebio Ribeiro (Federal University of Amazonas), Viviane Angelina de Souza (Federal University of Juiz de Fora), Adriana Maria Kakehasi (Federal University of Minas Gerais), Ana Karla Guedes de Melo

(Federal University of Paraíba), Haim Cesar, Sueli Coelho da Silva Carneiro (Federal University of Rio de Janeiro), Edgard Torres dos Reis Neto (Federal University of Sao Paulo), Roberto Ranza (Federal University of Uberlandia), Martina Skamlova (FNŠPFDR, Banská Bystrica), Brian Oppermann MD (Geisinger Health System), Samia Araujo de Sousa Studart (General Hospital of Fortaleza), Adam Kilian (George Washington University), Douglas White, Melanie Winter (Gundersen Health System), Gozde Kübra Yardımcı, Umut Kalyoncu (Hacettepe University Faculty of Medicine), Gozde Kubra Yardımcı (Hacettepe University Faculty of Medicine, Ankara), Samar Al-Emadi (Hamad Medical Corporation), Christine Graver (Hampshire Hospitals NHS Trust), Eva Rath (Hanusch Krankenhaus, Vienna), Dimitrios Vassilopoulos (Hippokraton General Hospital, Athens), Luis Francisco Valdes Corona (Hospital Angeles Lomas), Mercedes Pinto Ortiz (Hospital Ángeles Mocol), Elisa Palalane (Hospital Central de Maputo), Monica Vazquez del Mercado (Hospital Civil de Guadalajara "Dr. Juan I. Menchaca"), Jose A Gomez Puerta (Hospital Clinic Barcelona), CLAUDIA MARQUES (HOSPITAL DAS CLÍNICAS – UFPE), Maria del Pilar Cruz Domínguez (Hospital de Especialidades La Raza (asociación de escleroderma)), Gabriela Maria Guzman Melgar (Hospital del Valle, Honduras), Roberto Muñoz Louis (Hospital Docente Padre Billini), Juan Carlos Cobeta Garcia (Hospital Ernest Luch, Calatayud), Ariel Salinas (Hospital Essalud Alberto Sabogal Sologuren), Caroline Siegel (Hospital for Special Surgery), Theodore Fields (Hospital for Special Surgery), Mathia Cecilia Aguiar (Hospital General Agustín O'horan), Everardo Alvarez Hernandez (Hospital General de México "Dr. Eduardo Liceaga"), Jose Eduardo Navarro Zarza (Hospital General de Texco "Adolfo Prieto"), David Vega (Hospital General de Zona #17), LUCIA MAYA (Hospital General de Zona #48 IMSS), Salvador Loredano Alanis (Hospital General de Zona No. 3), Fernando Cobos Villanueva (Hospital General de Zona No. 30), Mónica Nancy Fuentes-Hernandez (Hospital General ISSSTE Toluca), Aline Ranzolin (Hospital Getulio Vargas), Glauco Ricardo Werner de Castro (Hospital Gobernador Celso Ramos), Jossiel Then Báez (Hospital Metropolitano de Santiago (HOMS)), Vladimir Arjoa Santos (Hospital Municipal La Portada (Hospital Centinela de COVID-19)), María Carmen Torres Martin (Hospital Nuestra Señora Sonsoles, Avila), Blanca Mota (Hospital Privado), Shakira Selvananda (Hospital Pulau Pinang), JOSE ANTONIO VELOZ ARANDA (HOSPITAL REGIONAL ISSSTE LEON), BERNARDO CUNHA (HOSPITAL SARAH-BRASÍLIA), GUO RUEY LING (Hospital Sibiu), Juan José Alegre Sancho (Hospital Universitari Dr Peset, Valencia), Cassandra Michel Skinner Taylor (Hospital Universitario "Dr. José Eleuterio González"), Dionicio Angel Galarza Delgado (Hospital Universitario "Dr. José Eleuterio González"), Lorena Pérez-Barbosa (Hospital Universitario "Dr. José Eleuterio González"), Francinne Machado Ribeiro (Hospital Universitário Pedro Ernesto Universidade do Estado do Rio de Janeiro), Jose Campos, Natalia de la Torre-Rubio (Hospital Universitario Puerta de Hierro), Iris Jazmin Colunga Pedraza (Hospital Universitario, Universidad Autonoma de Nuevo Leon), Rebecca Grainger (Hutt Hospital), Laurindo Ferreira da Rocha Junio (IMIP), David Alejandro Herrera-va Oostdam (IMSS), Juárez Mora Ingrid Maribel (IMSS), LILLIANA PABLO-OLIVARES (IMSS), Oscar Marquez-Miranda (IMSS), Rina Dalva Neubarth (Institute of Medical Assistance to State Civil Servants of Sao Paulo), Concetta Lamore, Elliot Rosenstein, Melissa Harvey, Neil Kramer, Nicole Daver (Institute of Rheumatic and Autoimmune Diseases), Jiri Vencovsky, Maria Filkova (Institute of Rheumatology, Prague), Andrés Zúñiga-Vera (Instituto de Reumatología, Hematología y Dermatología (RHED)), Luis H. Silveira (Instituto Nacional de Cardiología), Diana Cervantes Rosete, Eduardo Martín Nares, Marina Rull Gabayet, Tatiana Sofia Rodriguez-Reyna (Instituto Nacional de Ciencias Médicas y Nutrición Salvador Zubirán), Suneja Hogarty (Integrative Arthritis and Pain Consultants), Laurie Hughell, Lindsey Clark (Iowa Arthritis & Osteoporosis Center), Mahdi Vojdani (Iran Rheumatology Center), Monique Hoekstra, Theo Zijlstra (Isala Hospital, Zwolle), Servet Akar (Izmir Katip Celebi University Atatürk Training and Research Hospital, Izmir), Hirofumi Amano (Juntendo University), Karen Yeter (Kaiser Permanente), Elena Nikiphorou, Lucia Fusi, Rosaria Salerno (King's College Hospital), Loretta Bukauskiene (Klaipeda University Hospital), Fatemah Abutiban (Kuwait Rheumatology Association), Elizabeth Macphie (Lancashire and South Cumbria NHS Foundation Trust), Claire Vandeveld (Leeds Teaching Hospitals NHS Trust), Elizabeth Warner (Lister Hospital), Caroline Mulvaney Jones (Llandudno Hospital), VANEET SANDHU (Long Island Regional Arthritis Osteoporosis Care, PC), Leanna Wise (Los Angeles County + USC Medical Center), Daniela Spisakova, Marieta Senčarová (Louis Pasteur University Hospital, Košice), Faizah Siddique (Loyola University Medical Center), Jennifer Magno (Makati Medical Center), Ivy Rivera-Go (Manila Med), Rachel Wallwork (Massachusetts General Hospital), Kristin M. D'Silva, MD, Naomi J. Patel, MD (Massachusetts General Hospital, Harvard Medical School), Geraldine McCarthy (Mater Misericordiae University Hospital), Ali Duarte-García, Emily Gilbert, Maria Valenzuela Almada (Mayo Clinic Health System), Marta Píčová (Medipont plus s.r.o., České Budějovice), Gabriela Belakova (Medman s.r.o., Martin), Byung Ban (Medstar Georgetown University Hospital), Elaine Zobrist, Lynn Ludmer (Mercy Hospital), Deshiré Alpizar-Rodríguez (Mexican College of Rheumatology), Jonathon Brooks, Mark Sapsford (Middlemore Hospital), Sarah Horton (Minerva Health Centre), Farida Al Balushi (Moh), Tamar Tanner (Montefiore Medical Center), Viktoriia Vasylets (Multifield Medical Centre, Odessa), Kyoko Motomura (National Center for Global Health and Medicine), Shiro Ohshima (National Hospital Organization Osaka Minami Medical Center), Dagmar Mičková, Helena Raffayova, Martin Zlany, Olga Lukacova, Vanda Mlynarikova (National Institute of Rheumatic Diseases, Piešťany), Marina Hamaguchi (Nihon University Itabashi Hospital), Jane Leeder (Norfolk & Norwich

University Hospital), Eric Ruderman (Northwestern Memorial), Evangeline Scopelitis, Jerald Zakem, Karen Toribio Toribio, Robert Quinet, Tameka Webb-Dejege, William Davis (Ochsner Medical Center Rheumatology Department), Laura Sampson (Orthopaedics and Rheumatology of the North Shore (ORNS)), NORIHIRO NISHIMOTO (Osaka Rheumatology Clinic), Kristen Young (Parkland Hospital), Inita Bulina, Julija Zepa (Pauls Stradins Clinical University Hospital, Riga), Sow Lai Kan (Penang General Hospital), Márta Király (Petz Aladár University Teaching Hospital, Győr), Soňa Žlnayová (Poliklinika MarMedico, s.r.o., Nové Mesto nad Váhom), Mauro Keiserman (Pontifical Catholic University of Rio Grande do Sul), A. Patrice Pollock, Abeer Eid, Ashley Maier, Atzintli Martínez, Cara Bailey, Caroline Arroyo, David Snow, Eduardo Martin-Nares, Elvia Moreta, Ericsson Trieu, Ernst Markus Klaus, Fedra Irazoque, Genevieve Katigbak, Gilbert Kepecs, Greta Reyes-Cordero, Jaimie Russell, Jessica Chapman, Joseph Huffstutter, Kara Long, Khurram Abbass, Lauren Kaufman, Marco Martinez Martinez, MONICA MACIAS-PALACIOS, NAGA PRABU, Paloma De Abreu Trigueros, Raheem Kherani, Randall Beyl, Sarah Middleton, Sharath Kumar, Susan Barrett, Viktoria Pavlova, Yanira Yinde (Private Practice), Samir Patel (Queen Elizabeth Hospital Woolwich), Alexandra Balbir-Gurman (Rambam Rheumatology Institute, Haifa), Bruno Ferreira (Rede Sarah de Hospitais de Reabilitação), Kathleen Anthony (Rheumatology and Osteoporosis Specialists), Richard Steyn (Rheumatology Associates), Lillian Miranda (Rheumatology Center INC), Shabbir Chikani (Rheumatology centre, HCG hospital), Ann Clarke (Richmond Road Diagnostic And Treatment Center), Ammar Haikal, Michael Guma, Sushama Mody (Riverside Medical Group), Diana O'Kane (RNHRD at Royal United Hospital Bath), Sheila O'Reilly (Royal Derby Hospital) HUMAID AL WAHSHI, Nasra Al-Adhoubi (Royal Hospital), Jenny Tyler (Royal United hospital), Jennifer Tyler (Royal United Hospital, Bath), Vivien Hsu (Rutgers Robert Wood Johnson), Mária Oetterová (Safarik University hospital, Kosice), Audrey Low, Beverley Harrison (Salford Royal NHS FT), Guillermo Pons-Estel (Sanatorio Parque), Mariana Peixoto Guimaraes Ubirajara e Silva de Souza (Santa Casa de Belo Horizonte), Carolina Zorzanelli Costa (Santa Casa de Vitoria), Veronika Sharp (Santa Clara Valley Medical Center), Laura Groseanu (Sf Maria Clinical Hospital, Bucharest), Daric Mueller (Shores Rheumatology PC), Lillian Barra, Tom Appleton (SIHC London), South African Rheumatism and Arthritis Association (South Africa), Laura Chadwick (St Helens & Knowsley NHS Foundation Trust), Richard Conway (St James' Hospital, Dublin), Janet Pope (St. Joseph's Health Care), Maria del Carmen Hernandez (Star Medica Centro), Cecilia Resende Brunow Bazzo (State University of Londrina), Steven Feldman (Steven Feldman MD PA), Anna Sabová (Súkromná Reumatologická Ambulancia, Vranov nad Topľou), Talal Ali Al Lawati (Sultan Qaboos University Hospital), Rachael Flood (Tallaght University Hospital), MOOKHIN HNG (Tareum) Arundathi Jayatilke (Temple University Hospital) Simeon Grazio (The teaching hospital sisters of charity), Keiko Koshiba, Masashi Funada (Toho University Omori Medical Center), Midori Sato (Tokyo Medical Center), Fukumi NAKAMURA (Tokyo Metropolitan Bokutoh General Hospital), Kazuhisa Yokota (Tokyo Metropolitan Health and Hospitals Corporation, Ebara Hospital), Lingli Dong (Tongji Hospital), A. Silvia Ross (Triangle Arthritis & Rheumatology), John FitzGerald, Tanaz Kermani (UCLA), Boris Karanovic (UHC Zagreb), Alojzija Hocevar (UMC Ljubljana), Martina Bakosova (UNB Nemocnica Stare Mesto, Bratislava), Manuel Ugarte-Gil (Universidad Científica del Sur-Hospital Guillermo Almenara Irigoyen), Marcelo Pinheiro (Universidade Federal De São Paulo Escola Paulista de Medicina e Escola Paulista de Enfermagem), Su-Ann Yeoh (University College London Hospital), Maria Oetterova, Nicola Gullick (University Hospital), Emőke Šteňová (University Hospital Bratislava), Marko Barešić, Ivan Padjen (University Hospital Center Zagreb), Melanie-Ivana Čulo (University Hospital Dubrava, Zagreb), Wilson Bautista Molano (University Hospital Fundación Santa Fe de Bogotá), James Pilcher (University Hospital Lewisham), Kristina Kovačević Stranski (University Hospital Osijek), Lubica Capova (University Hospital, Bratislava), Zelmira Macejova (University Hospital, Košice), Jarosław Nowakowski (University Hospital, Krakow), Takashi Kida (University Hospital, Kyoto Prefectural University of Medicine), SAUDATU ISSAKA (University Hospitals), Licia Maria Henrique da Mota (University of Bras), JoAnn Zell (University of Colorado), Christine Peschken (University of Manitoba), Angelito Flora, Evelyn Salido, Geraldine Zamora (University of the Philippines, Philippine General Hospital), Alison Bays (University of Washington, Seattle), David Karp, Ezzati Fatemeh, Guillermo Quiceno, Kathryn Dao (UT Southwestern Medical Center), APARNA DAS (UTMB), Lauro Quintanilla (Virginia Medical), Vicki Quincey (Waikato Hospital), Deborah Parks (Washington University Div of Rheumatology), Kelly Weselman (Wellstar Kennestone Hospital), Fabiane Shizue Sakai (Windmills Hospital), Katie Williams (York District Hospital), Kirsty Devine (York/Scarborough Hospitals) Lenny Geurts-van Bon (Ziekenhuisgroep Twente), Sarah Goglin (Zuckerberg San Francisco General Hospital). Psoriasis Patient Registry for Outcomes, Therapy and Epidemiology of COVID-19 Infection (PsoProtect) Consortium: A van geest, Aadarsh Shah, AC de Waal, Alba Catala, Alberto Barea, Alberto Romero Maté, Alekya Singapore, Alexandra Paoilino, Alexandra Vincent, Alice Mwale, Alison Sears, Amy de la Breteque, Amy Foulkes, Ana Brasileiro, Ana Maria Morales Callaghan, Ana Martinez, Andrea Carugno, Andrea Chiricozzi, Andrea Conti, Andrew DeCrescenzo, Andrew Pink, Angela Braeger, Anke Piekar, Ann Jones, Ann Sergeant, Anna Baran, Anna Groeneveld, Annette Essex, Anthony Bewley, Antoine Fauconneau, Antony Rahaarja, Aparna Sinha, Areti Makrygeorgou, Arias Martín Nadia, Astrid van Huizen, Beata Fabos, Beatriz Pérez Suárez, Benhadou Farida, Birgitta Wilson Claréus, Bola Coker, Canelle Mazaud, Caoimhe Fahy, Caoimhe M. R. Fahy, Carla Tubau Prims, Carmen

Bugarin Diz, Caroline Campbell, Carolyn Martin, Carrie Davis, Catherine Holden, Catherine Motosko, Catherine Quinlan, Catriona Maybury, Cesar Gonzalez, Charlotte Barclay, Chifari Angelo, Choon Siew Eng, Cid Yazigi Sabbag, Claudia de la Cruz, Claudia Guebenlian Bakerdian, Claudio Greco, Cristina Echeverria, Cristina Mariela Echeverria, Dagmara Samselska, Danang Tri Wahyudi, Daniela Armijo, Danielle Echeverria, Dagmara Samselska, Danang Tri Wahyudi, Daniela Armijo, Danielle Brassard, Daryl Teo, David Fairhurst, Deanna Cummings, Deepthi Kolli, Denis Jullien, Denise Peeters, Descamps Vincent, Diana Patricia Ruiz Genao, Diana Ruiz Genao, Eileen Parry, Elaine Agius, Eleanor Henderson, Elena Hawryluk, Eliseo Martínez-García, Elizabeth Molina, Elizabeth Stewart, Ellie Henderson, Elzbieta Klujso, Emily Brown, Emily Dwyer, Emmanuel Mahe, Emmanuel Toni, Emmerson Gale Vista, Emmylou Casanova, Enikő Sonkoly, Enrique Loayza, Erin Kamp, Esteban Daudén, Esther Balogh, F Aubin, Felicity Edwards, Ferial Ismail, Fernando Valenzuela, Fikki Orekoya, Florentina-Silvia Dellì, Francesca Capon, Freya Meynell, Gabriel Magariños, Gabrielle Becher, Gabrielle Key, Gaëlle Quereux, Gaurav Dhawan, Gemma Keogh, Georgi Popov, Georgie King, Girard Celine, Gloria Aparicio, Gordana Krnjević Pezic, Graham Johnston, Gustavo Anibal Cardozo, H. El Khattabi, Haleema Alfaiakawi, Hazel Oon, Hazel Rooney, Helen McAtteer, Helene Aubert, Hervé Bachelez, Hoseah Waweru, Ian Pearson, Ignacio Yanguas, Iman Kotb, Ines Barbosa, Isabella Tosi, J Charles, Jack French, James John Murphy, Jamie Weisman, Jennifer Kerisit, Jennifer Soung, Jenny Carolan, Jenny Hughes, Jill Ramsay, Jing Husaini, JM. Ortiz, Jo Lambert, Joanne Topliffe, Joel M Gelfand, John Newsham, Jonathan Ng, Jose-Manuel Carrascosa, Joseph J Schwartz, Julia Bowman, Julie Charles, Juul van de Reek, Karina Jackson, Karolina Vorčáková, Katarzyna Gryś, Katherine Poirier, Kathryn Kerisit, MD, Kayleigh J Mason, Keith Wu, Kimberly Anne G. Ednalino, Kirsty Wynes, Kyle Eash, Lars Iversen, Laura Speck, Laure Mery-Bossard, Lauren Booker, Leah Hoggan, leandro perrotat, Leila Asfour, Leila Kattach, Leontien de Graaf, Lesort Cécile, Lian van der Gang, Lieve Meuleman, Lim Jin Huang, Linda Lawson, Linda McMahon, Line Kibsgaard, Lisa Kirby, Lisa van der Rijst, Liv Eidsmo, Lluís Rusiñol Batlle, Lone Skov, Lorraine Gribben, Lucy Moorhead, Luigi Naldi, Luis Puig, Lyndsey Florence, M.M. Bakker, Mahira Hamdy El Sayed, Mahmood Abubakar, Malcolm Rustin, Manel Velasco, Mangiarotti Germán, Manisha Panchal, Manja Bloem, Manpreet Lakhani, Manuel Dario Franco, Mara Maccaroni, Margot Common, Maria Fernanda Lui, Marie Dedroog, Marie-Eve Fortier, Marie-Louise Svensson, Mariusz Sikora, Mark Vandaele, Maruska Marovt, Masanori Okuse, Matthias Schmuth, Melanie Bruton, Melanie Claridge, Melanie westmoreland, Melissa Sweeney, Michela Magnano, Mireille van Baar, Miriam Saposnik, Mohamed EL-Komy, Musumeci Maria Letizia, N Beneton, Nick J Reynolds, Nick Reynolds, Nora Noemí Kogan, Omid Zargari, Pablo De Caso, Pamela Campbell, Paola Di Meglio, Paolo Gisoni, Paula Bourren, Paula Luna, Paulo Varela, Penny Nash, Peter Foley, Peter Holló, Peter Jenkin, Phan Céline, Philip Hampton, Phyllis Spuls, Pia Tookey, Piergiacomo Calzavara-Pinton, Portia Goldsmith, Pter Holló, Rachel Bak, Radhika Patel, Raquel Rivera Diaz, Rebecca Rose, Reinhart Speeckaert, Ricardo Romiti, Richard Warren, Richard Woolf, Rogelio Mercado, Rohima Khatun, Roland Gyulai, Romana Ceovic, Romana Machackova, Ronald Vender, Rosa Andres Ejarque, Rosa Taberner, Rosalie Juch, Russell cohen md faad, Sandy McBride, Sara Cacciapuoti, Sarah Drummond, Sarah Kirk, Sarah McCusker, Saskia Reeken, Selva Anahi Gutiérrez Yañez, Shanti Ayob, Shrita Shinton, Silvia Pérez Barrio, Simina Stefanescu, Sinan Doğan, Sinead M Langan, Sophia Mohme, Sophia Strong-Sheldrake, Sophie Wanten, Stefano Piaserico, Stephanie Ball, Stephanie Ogden, Susan Ann Lloyd, Susan Hall, Susan Woollett, Susana Armesto Alonso, Susannah Hoey, Taku Suzuki, Tatiana del Rio, Tatiana Pecova, Teena Mackenzie, Telgdy Enikő, Teresa Tsakok, Thomas Beaulieu, Tiago Torres, Ting Seng Tang, Tom Hillary, Tomas Kampe, Toomas Talme, Tracy Brown, Tracy Smith, Tran Hong Truong, Trupti Desai, Victoria Brown, Victoria King, Vito Di Lernia, Wisam Alwan, Ya-Hsin Wang, Yena Kim, Zafeiriou Efterpi, zahira koreja, Zaida Troyano, Zeeshaan Hasan, Zeljko Mijuskovic, Zenas Yiu, Zeynep Topkarci.

Contributors PMM and MS had access to the study data and vouch for the data and analyses. MS performed the statistical analyses. PMM, MS and JL drafted the first version of the manuscript. PMM, MS, SKM, JL, LG, ND, AP, AS, ACR, BF, CGA, CGSS, CEMG, CL, CM-R, DW, DAR, DW, EFM, ES, ERS, FMR, FO, FRM, HS, JD, JNB, JH, KLH, LG, LS, LJ, LC, MMP, MDZ, MdIAS, MY, MD, MG-M, NR, NH, PS, RG, RH, RH, SL-T, SB, TP, TO, WB-M, ZSW, ZZNY, JY, PCR and CHS contributed to data collection, data quality control, data analysis and interpretation of the data. PMM is the guarantor and accepts full responsibility for the work and/or the conduct of the study, had access to the data, and controlled the decision to publish. All authors contributed intellectual content during the drafting and revision of the work and approved the final version to be published.

Funding The study received support from the American College of Rheumatology (ACR) and European Alliance of Associations for Rheumatology (EULAR).

Competing interests PMM has received honoraria from Abbvie, BMS, Celgene, Eli Lilly, Galapagos, Janssen, MSD, Novartis, Orphazyme, Pfizer, Roche and UCB, all unrelated to this manuscript, and is supported by the National Institute for Health Research (NIHR), University College London Hospitals (UCLH), Biomedical Research Centre (BRC). MS reports a joint, unconditional grant from a consortium of 14 companies supporting the German RABBIT register (AbbVie, Amgen, BMS, Fresenius Kabi, Galapagos, Hexal, Lilly, MSD, Pfizer, Roche, Samsung, Sanofi, Viatris and UCB). SKM reports departmental income from AbbVie, Almirall, Eli Lilly, Janssen-Cilag,

Novartis, Sanofi, UCB, outside the submitted work. JL has nothing to disclose. LG reports personal consultant fees/honoraria/travelling support from AbbVie, Amgen, Bristol-Myers Squibb, Biogen, Celgene, Celltrion, Galapagos, Janssen, Lilly, MSD, Novartis, Pfizer, and UCB, and grants from Sandoz and UC, all unrelated to this manuscript. ND has nothing to disclose. AP has nothing to disclose. AS reports a joint, unconditional grant from a consortium of 14 companies supporting the German RABBIT register (AbbVie, Amgen, BMS, Fresenius Kabi, Galapagos, Hexal, Lilly, MSD, Pfizer, Roche, Samsung, Sanofi, Viatrix and UCB) and personal fees from lectures for AbbVie, Amgen, Celltrion, MSD, Janssen, Lilly, Roche, BMS and Pfizer, all unrelated to this work. ACR reports a joint, unconditional grant from a consortium of 12 companies supporting the German RABBIT-SpA register (AbbVie, Amgen, Biogen, Celltrion, Hexal, Janssen-Cilag, Lilly, MSD, Novartis, Pfizer, Viatrix and UCB) and personal fees from lectures for Novartis, Roche, and Pfizer, all unrelated to this work. BF has nothing to disclose. CGA has nothing to disclose. CGSS has nothing to disclose. CEMG reports grants and/or personal fees from AbbVie, Almirall, Amgen, Anaptybio, BMS, Boehringer-Ingelheim, Evelo Bioscience, Inmagene, GSK, Janssen, Kyowa Kirin, LEO, Lilly, Novartis, ONO Pharmaceutical, Pfizer and UCB Pharma, outside the submitted work. CL has nothing to disclose. CM-R has nothing to disclose. DW has received personal speaker/consultant fees from AbbVie, BMS, MSD, Pfizer, Roche Chugai, Amgen, Nordic Pharma, UCB, Novartis, Janssen, Lilly, Sandoz, Grunenthal, Galapagos. DAR is Scientific Advisor for GSK, unrelated to this work. DW has nothing to disclose. EFM has received personal consultant fees from Boehringer Ingelheim Portugal, Lda; LPCDR received support for specific activities: grants from Abbvie, Novartis, Lilly Portugal, Amgen Biofarmacêutica, Grünenthal S.A., MSD, Medac and from A. Menarini Portugal-Farmacêutica, S.A.; grants and non-financial support from Pfizer, and non-financial support from Grünenthal GmbH, outside the submitted work. ES has nothing to disclose. ESR reports grants/contracts from Novartis, Pfizer, Amgen and Elea, honoraria from Amgen, Abbvie, BMS, Eli Lilly, Janssen, Novartis, Pfizer, Sandoz, and UCB, support for attending meetings from Abbvie, Pfizer, UCB, and Janssen, and participation on data safety monitoring board or advisory board from Abbvie, Janssen, Pfizer, Amgen, Sandoz and Novartis. FMR has nothing to disclose. FO has nothing to disclose. FRM has nothing to disclose. HS has nothing to disclose. JD has nothing to disclose. JNB reports grants and/or personal fees from AbbVie, Almirall, Amgen, Boehringer Ingelheim, Bristol-Meyers-Squibb, J&J, LEO Pharma, Lilly, Novartis, Pfizer, Samsung, Sun Pharma, and UCB, outside of the submitted work. JH has nothing to disclose. KLH has received non-personal speaker's fees from Abbvie and grant income from BMS, UCB, and Pfizer, all unrelated to this manuscript, and is supported by the NIHR Manchester Biomedical Research Centre. LG has received consulting fees and/or research support from Abbvie, Acelyrin, Eli Lilly, Fresenius Kabi, Janssen, Novartis, Pfizer and UCB, all unrelated to this manuscript, and research support from UCB. LS has nothing to disclose. LJ has nothing to disclose. LC has not received fees or personal grants from any laboratory, but her institute works by contract for laboratories among other institutions, such as Abbvie Spain, Eisai, Gebro Pharma, Merck Sharp & Dohme España, S.A., Novartis Farmaceutica, Pfizer, Roche Farma, Sanofi Aventis, Astellas Pharma, Actelion Pharmaceuticals España, Grünenthal GmbH and UCB Pharma. MMP has nothing to disclose. MDZ has nothing to disclose. MdlAS has nothing to disclose. MY has nothing to disclose. MD has nothing to disclose. NG-S has nothing to disclose. NR has nothing to disclose. NH has received consulting fees from Abbvie, Eli Lilly, Janssen, Novartis and UCB. PS has nothing to disclose. RG has received consulting/speaker's fees from Abbvie, Janssen, Novartis, Pfizer, and Cornerstones, all unrelated to this manuscript, and travel grants from Pfizer and Janssen. RH reports consulting fees from AbbVie, GSK, Novartis, Pfizer, Amgen, Biogen, BMS, Galapagos, Lilly, Mylan, Gilead, Janssen, TAKEDA/Shire, Roche/Chugai, research grant from Pfizer, all unrelated to this manuscript. SL-T has nothing to disclose. SB reports consulting fees from AbbVie, Horizon, Novartis, and Pfizer, and is an employee of Pfizer, Inc. TP reports personal consultant fees from Abbvie, Amgen, Biogen, BMS, Celgene, Celltrion, Fresenius-Kabi, Galapagos, Gilead, Janssen, Lilly, MSD, Nordic, Novartis, Pfizer, Roche-Chugai, Sandoz, Sanofi and UCB, all unrelated to this manuscript. TO reports consultancy fees from Merck Sharp & Dohme, unrelated to the present work. WBM has received personal speaker/consultant fees from AbbVie, Pfizer, Amgen, Novartis, Janssen, Lilly, Biopas. ZSW has nothing to disclose. ZZNY has nothing to disclose. JY is supported by NIH/NIAMS K24 AR07534 and AHRQ R01HS028024. She has received research grants from Gilead, Aurinia, BMS Foundation and Astra Zeneca and performed consultation for Astra Zeneca, Pfizer, and Aurinia. PCR has nothing to disclose. CHS reports grants from AbbVie, Sanofi, Novartis, and Pfizer and through consortia with multiple academic partners (psort.org.uk, BIOMAP-IMI.eu), outside the submitted work; she is a member of the British Association of Dermatologists Guideline committee on biologics in psoriasis.

Patient and public involvement Patients and/or the public were involved in the design, or conduct, or reporting, or dissemination plans of this research. Refer to the Methods section for further details.

Patient consent for publication Not applicable.

Ethics approval Given that the registries collect deidentified data, the UK Health Research Authority, the University of California San Francisco Institutional Review Board and the Leeds Research Ethics Committee (UK) considered them

exempt from patient consent. Local regulatory guidelines were followed by international sites.

Provenance and peer review Not commissioned; externally peer reviewed.

Data availability statement Reasonable data requests will be considered, wherever legally and ethically possible. Applications to access the data should be made to the C19-GRA Steering Committee.

Supplemental material This content has been supplied by the author(s). It has not been vetted by BMJ Publishing Group Limited (BMJ) and may not have been peer-reviewed. Any opinions or recommendations discussed are solely those of the author(s) and are not endorsed by BMJ. BMJ disclaims all liability and responsibility arising from any reliance placed on the content. Where the content includes any translated material, BMJ does not warrant the accuracy and reliability of the translations (including but not limited to local regulations, clinical guidelines, terminology, drug names and drug dosages), and is not responsible for any error and/or omissions arising from translation and adaptation or otherwise.

Open access This is an open access article distributed in accordance with the Creative Commons Attribution Non Commercial (CC BY-NC 4.0) license, which permits others to distribute, remix, adapt, build upon this work non-commercially, and license their derivative works on different terms, provided the original work is properly cited, appropriate credit is given, any changes made indicated, and the use is non-commercial. See: <http://creativecommons.org/licenses/by-nc/4.0/>.

ORCID iDs

Pedro M Machado <http://orcid.org/0000-0002-8411-7972>
 Martin Schäfer <http://orcid.org/0000-0001-6487-3634>
 Laure Gossec <http://orcid.org/0000-0002-4528-310X>
 Alexander Pfeil <http://orcid.org/0000-0002-2709-6685>
 Anja Strangfeld <http://orcid.org/0000-0002-6233-022X>
 Anne Constanze Regierer <http://orcid.org/0000-0003-2456-4049>
 Bruno Fautrel <http://orcid.org/0000-0001-8845-4274>
 Corinne Miceli-Richard <http://orcid.org/0000-0002-3009-3637>
 Daniel Wendling <http://orcid.org/0000-0002-4687-5780>
 Deshira Alpizar Rodriguez <http://orcid.org/0000-0002-6930-0517>
 Elsa F Mateus <http://orcid.org/0000-0003-0059-2141>
 Emily Sirotych <http://orcid.org/0000-0002-7087-8543>
 Enrique R Soriano <http://orcid.org/0000-0003-3143-1084>
 Francinne Machado Ribeiro <http://orcid.org/0000-0003-0038-983X>
 Frederico Rajão Martins <http://orcid.org/0000-0002-9742-2677>
 Jonathan Hausmann <http://orcid.org/0000-0003-0786-8788>
 Kimme L Hyrich <http://orcid.org/0000-0001-8242-9262>
 Loreto Carmona <http://orcid.org/0000-0002-4401-2551>
 Marcelo M Pinheiro <http://orcid.org/0000-0002-1896-8322>
 Mark Yates <http://orcid.org/0000-0001-5449-5211>
 Rebecca Hasseli <http://orcid.org/0000-0002-2982-8253>
 Saskia Lawson-Tovey <http://orcid.org/0000-0002-8611-162X>
 Thao Pham <http://orcid.org/0000-0002-5978-0983>
 Tor Olofsson <http://orcid.org/0000-0002-9919-4487>
 Philip C Robinson <http://orcid.org/0000-0002-3156-3418>

REFERENCES

- Landewe RMB, Kroon FPB, Alunno A, *et al.* n.d. EULAR recommendations for the management and vaccination of people with rheumatic and musculoskeletal diseases in the context of SARS-cov-2: the november 2021 update. *Ann Rheum Dis*
- Mikuls TR, Johnson SR, Fraenkel L, *et al.* American College of rheumatology guidance for the management of rheumatic disease in adult patients during the COVID-19 pandemic: version 3. *Arthritis Rheumatol* 2021;73:e1–12.
- Curtis JR, Johnson SR, Anthony DD, *et al.* American College of rheumatology guidance for COVID-19 vaccination in patients with rheumatic and musculoskeletal diseases: version 4. *Arthritis Rheumatol* 2022;74:e21–36.
- Grainger R, Kim AHJ, Conway R, *et al.* COVID-19 in people with rheumatic diseases: risks, outcomes, treatment considerations. *Nat Rev Rheumatol* 2022;18:191–204.
- Kroon FPB, Najm A, Alunno A, *et al.* Risk and prognosis of SARS-cov-2 infection and vaccination against SARS-cov-2 in rheumatic and musculoskeletal diseases: a systematic literature review to inform EULAR recommendations. *Ann Rheum Dis* 2022;81:422–32.
- Conway R, Grimshaw AA, König MF, *et al.* SARS-cov-2 infection and COVID-19 outcomes in rheumatic diseases: a systematic literature review and meta-analysis. *Arthritis Rheumatol* 2022;74:766–75.
- Strangfeld A, Schäfer M, Gianfrancesco MA, *et al.* Factors associated with COVID-19-related death in people with rheumatic diseases: results from the COVID-19 global rheumatology alliance physician-reported registry. *Ann Rheum Dis* 2021;80:930–42.
- Izadi Z, Brenner EJ, Mahil SK, *et al.* Association between tumor necrosis factor inhibitors and the risk of hospitalization or death among patients with immune-mediated inflammatory disease and COVID-19. *JAMA Netw Open* 2021;4:e2129639e2129639.

- 9 Sparks JA, Wallace ZS, Seet AM, *et al.* Associations of baseline use of biologic or targeted synthetic dmards with COVID-19 severity in rheumatoid arthritis: results from the COVID-19 global rheumatology alliance physician registry. *Ann Rheum Dis* 2021;80:annrheumdis-2021-220418:1137–46..
- 10 Sattui SE, Conway R, Putman MS, *et al.* Outcomes of COVID-19 in patients with primary systemic vasculitis or polymyalgia rheumatica from the COVID-19 global rheumatology alliance physician registry: a retrospective cohort study. *Lancet Rheumatol* 2021;3:e855–64.
- 11 Ugarte-Gil MF, Alarcón GS, Izadi Z, *et al.* Characteristics associated with poor COVID-19 outcomes in individuals with systemic lupus erythematosus: data from the COVID-19 global rheumatology alliance. *Ann Rheum Dis* 2022;81:annrheumdis-2021-221636:970–8..
- 12 MacKenna B, Kennedy NA, Mehrkar A, *et al.* Risk of severe COVID-19 outcomes associated with immune-mediated inflammatory diseases and immune-modifying therapies: a nationwide cohort study in the opensafely platform. *Lancet Rheumatol* 2022;4:e490–506.
- 13 Mahil SK, Dand N, Mason KJ, *et al.* Factors associated with adverse COVID-19 outcomes in patients with psoriasis-insights from a global registry-based study. *J Allergy Clin Immunol* 2021;147:S0091-6749(20)31413-5:60–71..
- 14 Gianfrancesco M, Hyrich KL, Al-Adely S, *et al.* Characteristics associated with hospitalisation for COVID-19 in people with rheumatic disease: data from the COVID-19 global rheumatology alliance physician-reported registry. *Ann Rheum Dis* 2020;79:annrheumdis-2020-217871:859–66..
- 15 Liew JW, Bhana S, Costello W, *et al.* The COVID-19 global rheumatology alliance: evaluating the rapid design and implementation of an international registry against best practice. *Rheumatology (Oxford)* 2021;60:keaa483:353–8..
- 16 Mahil SK, Yates M, Yiu ZZN, *et al.* Describing the burden of the COVID-19 pandemic in people with psoriasis: findings from a global cross-sectional study. *J Eur Acad Dermatol Venereol* 2021;35:e636–40.
- 17 Lawson-Tovey S, Strangfeld A, Hyrich KL, *et al.* EULAR COVID-19 registry: lessons learnt and future considerations. *Ann Rheum Dis* 2021;80:1110–5.
- 18 Yeoh S-A, Gianfrancesco M, Lawson-Tovey S, *et al.* Factors associated with severe COVID-19 in people with idiopathic inflammatory myopathy: results from the COVID-19 global rheumatology alliance physician-reported registry. *RMD Open* 2022;8:e002508.
- 19 Harrell F. Regression modeling strategies: with applications to linear models, logistic regression, and survival analysis. *Chapter 5: Resampling, Validating, and Simplifying the Model* 2001;3:88–103.
- 20 Schäfer M, Strangfeld A, Hyrich KL, *et al.* Response to: " correspondence on factors associated with COVID-19-related death in people with rheumatic diseases: results from the COVID-19 global rheumatology alliance physician reported registry" by mulhearn *et al* *Ann Rheum Dis* 1, 2021.:annrheumdis-2021-220134.
- 21 Curtis JR, Zhou X, Rubin DT, *et al.* Characteristics, comorbidities, and outcomes of SARS-cov-2 infection in patients with autoimmune conditions treated with systemic therapies: a population-based study. *J Rheumatol* 2022;49:320–9.
- 22 Feldmann M, Maini RN, Woody JN, *et al.* Trials of anti-tumour necrosis factor therapy for COVID-19 are urgently needed. *Lancet* 2020;395:S0140-6736(20)30858-8:1407–9..
- 23 Robinson PC, Richards D, Tanner HL, *et al.* Accumulating evidence suggests anti-TNF therapy needs to be given trial priority in COVID-19 treatment. *Lancet Rheumatol* 2020;2:e653–5.
- 24 O'Halloran J, Kedar E, Anstrom KJ, *et al.* Infliximab for treatment of adults hospitalized with moderate or severe covid-19. *MedRxiv* 26, 2022.:2022.09.22.22280245.
- 25 Kridin K, Schonmann Y, Damiani G, *et al.* Tumor necrosis factor inhibitors are associated with a decreased risk of COVID-19-associated hospitalization in patients with psoriasis-A population-based cohort study. *Dermatol Ther* 2021;34:e15003.
- 26 Kridin K, Schonmann Y, Solomon A, *et al.* Risk of COVID-19 infection, hospitalization, and mortality in patients with psoriasis treated by interleukin-17 inhibitors. *J Dermatol Treat* 2022;33:2014–20.
- 27 Balestri R, Rech G, Girardelli CR. SARS-cov-2 infection in a psoriatic patient treated with IL-17 inhibitor. *J Eur Acad Dermatol Venereol* 2020;34:e357–8.
- 28 Foti R, Amato G, Visalli E. SARS-cov-2 infection in a psoriatic arthritis patient treated with IL-17 inhibitor. *Med Hypotheses* 2020;144:S0306-9877(20)31385-2:110040..
- 29 Messina F, Piaserico S. SARS-cov-2 infection in a psoriatic patient treated with IL-23 inhibitor. *J Eur Acad Dermatol Venereol* 2020;34:e254–5.
- 30 Wu J, Tang L, Ma Y, *et al.* Immunological profiling of COVID-19 patients with pulmonary sequelae. *MBio* 2021;12:e0159921e01599-21.
- 31 Sadeghi A, Tahmasebi S, Mahmood A, *et al.* Th17 and Treg cells function in SARS-cov2 patients compared with healthy controls. *J Cell Physiol* 2021;236:2829–39.
- 32 Maslennikov R, Ivashkin V, Vasilieva E, *et al.* Interleukin 17 antagonist netakimab is effective and safe in the new coronavirus infection (COVID-19). *Eur Cytokine Netw* 2021;32:8–14.
- 33 Avdeev SN, Trushenko NV, Tsareva NA, *et al.* Anti-IL-17 monoclonal antibodies in hospitalized patients with severe COVID-19: a pilot study. *Cytokine* 2021;146:..S1043-4666(21)00213-1.
- 34 Mills KHG. IL-17 and IL-17-producing cells in protection versus pathology. *Nat Rev Immunol* 2023;23:38–54.
- 35 Najm A, Alunno A, Mariette X, *et al.* Pathophysiology of acute respiratory syndrome coronavirus 2 infection: a systematic literature review to inform EULAR points to consider. *RMD Open* 2021;7:e001549.
- 36 Queiro Silva R, Armesto S, González Vela C, *et al.* COVID-19 patients with psoriasis and psoriatic arthritis on biologic immunosuppressant therapy vs apremilast in North Spain. *Dermatol Ther* 2020;33:e13961.
- 37 Lytyn Y, Georgakopoulos JR, Mufti A, *et al.* Incidence and prognosis of covid-19 in patients with psoriasis on apremilast: a multicentre retrospective cohort study. *J Eur Acad Dermatol Venereol* 2022;36:e94–5.
- 38 Mugheddu C, Pizzatti L, Sanna S, *et al.* COVID-19 pulmonary infection in erythrodermic psoriatic patient with oligodendroglioma: safety and compatibility of apremilast with critical intensive care management. *J Eur Acad Dermatol Venereol* 2020;34:e376–8.
- 39 Drake TM, Fairfield CJ, Pius R, *et al.* Non-Steroidal anti-inflammatory drug use and outcomes of COVID-19 in the ISARIC clinical characterisation protocol UK cohort: a matched, prospective cohort study. *Lancet Rheumatol* 2021;3:e498–506.
- 40 Lund LC, Kristensen KB, Reilev M, *et al.* Adverse outcomes and mortality in users of non-steroidal anti-inflammatory drugs who tested positive for SARS-cov-2: a Danish nationwide cohort study. *PLoS Med* 2020;17:e1003308.
- 41 Wong AY, MacKenna B, Morton CE, *et al.* Use of non-steroidal anti-inflammatory drugs and risk of death from COVID-19: an opensafely cohort analysis based on two cohorts. *Ann Rheum Dis* 2021;80:943–51.
- 42 Brenner EJ, Ungaro RC, Garry RB, *et al.* Corticosteroids, but not TNF antagonists, are associated with adverse COVID-19 outcomes in patients with inflammatory bowel diseases: results from an international registry. *Gastroenterology* 2020;159:S0016-5085(20)30655-7:481–491..
- 43 Ungaro RC, Brenner EJ, Garry RB, *et al.* Effect of IBD medications on COVID-19 outcomes: results from an international registry. *Gut* 2021;70:725–32.
- 44 König MF, Grzes KM, Robinson PC, *et al.* Sulfasalazine: a risk factor for severe COVID-19? *Lancet Rheumatol* 2022;4:e388–9.
- 45 Bower H, Frisell T, Di Giuseppe D, *et al.* Impact of the COVID-19 pandemic on morbidity and mortality in patients with inflammatory joint diseases and in the general population: a nationwide Swedish cohort study. *Ann Rheum Dis* 2021;80:1086–93.

Appendix 1. COVID-19 Global Rheumatology Alliance (C19-GRA) Consortium.

Name	Institution/Affiliation
Shafiq Fatima Akbar	124 Street Medical Group
Adriana de Oliveira Marinho	Acre State Hospital Foundation
Noreen Nasir	Aga Khan University Hospital, Karachi Pakistan
Hesham Hamoud	Al Azhar University Hospitals
Shraddha Jatwani	Albert Einstein Medical Center, PA
Shanmuganandan Krishnan	APOLLO CLINIC
Alba Paula	Argentine Society of Rheumatology
Alvaro Andres Reyes Torres	Argentine Society of Rheumatology
Ana Bertoli	Argentine Society of Rheumatology
Andrea Baños	Argentine Society of Rheumatology
Boris Kisluk	Argentine Society of Rheumatology
Carla Gobbi	Argentine Society of Rheumatology
Carla Maldini	Argentine Society of Rheumatology
Carla Matellan	Argentine Society of Rheumatology
Carlevaris Leandro	Argentine Society of Rheumatology
Carolina Aeschlimann	Argentine Society of Rheumatology
Cecilia Goizueta	Argentine Society of Rheumatology
Cecilia Pisoni	Argentine Society of Rheumatology
Cecilia Romeo	Argentine Society of Rheumatology
Debora Guaglianone	Argentine Society of Rheumatology
Eugenia Picco	Argentine Society of Rheumatology
Fabian Risueño	Argentine Society of Rheumatology
Federico Nicolas Maldonado	Argentine Society of Rheumatology
Gelsomina Alle	Argentine Society of Rheumatology
Gimena Gómez	Argentine Society of Rheumatology
Gisela Subils	Argentine Society of Rheumatology
Gustavo Fabián Rodríguez Gil	Argentine Society of Rheumatology
Hernán Maldonado Ficco	Argentine Society of Rheumatology
Ivana Romina Rojas Tessel	Argentine Society of Rheumatology

Jonathan Eliseo Rebak	Argentine Society of Rheumatology
José Luis Velasco Zamora	Argentine Society of Rheumatology
Josefina Gallino Yanzi	Argentine Society of Rheumatology
Juan Alejandro Albiero	Argentine Society of Rheumatology
Julia Scafati	Argentine Society of Rheumatology
Julieta Silvana Morbiducci	Argentine Society of Rheumatology
Karen Roberts	Argentine Society of Rheumatology
Karina Cogo	Argentine Society of Rheumatology
Lorena Takashima	Argentine Society of Rheumatology
Luciana Casalla	Argentine Society of Rheumatology
Luciana Gonzalez Lucero	Argentine Society of Rheumatology
Ma. Alicia Lazaro	Argentine Society of Rheumatology
María Alejandra Cusa	Argentine Society of Rheumatology
María Alejandra Medina	Argentine Society of Rheumatology
Maria de la Vega	Argentine Society of Rheumatology
María Elena Calvo	Argentine Society of Rheumatology
Maria Isabel Quaglia	Argentine Society of Rheumatology
María J. Haye Salinas	Argentine Society of Rheumatology
Maria Julieta Gamba	Argentine Society of Rheumatology
Maria Marcela Schmid	Argentine Society of Rheumatology
María Severina	Argentine Society of Rheumatology
Maria Sol Castaños Menescardi	Argentine Society of Rheumatology
Maria Soledad Gálvez Elkin	Argentine Society of Rheumatology
María Victoria Martire	Argentine Society of Rheumatology
Mariana Pera	Argentine Society of Rheumatology
Marina Laura Werner	Argentine Society of Rheumatology
Mercedes García	Argentine Society of Rheumatology
Micaela Cosatti	Argentine Society of Rheumatology
Natalia Herscovich	Argentine Society of Rheumatology
Natalia Lili Cuchiaro	Argentine Society of Rheumatology
Noelia German	Argentine Society of Rheumatology

Pablo Maid	Argentine Society of Rheumatology
Roberto Miguel Baez	Argentine Society of Rheumatology
Rodolfo Perez Alamino	Argentine Society of Rheumatology
Romina Nieto	Argentine Society of Rheumatology
Romina Tanten	Argentine Society of Rheumatology
Rosana Gallo	Argentine Society of Rheumatology
Rosana Quintana	Argentine Society of Rheumatology
Sabrina Porta	Argentine Society of Rheumatology
Sabrina Solange de la Vega Fernandez	Argentine Society of Rheumatology
Sandra Petruzzelli	Argentine Society of Rheumatology
Sebastián Moyano	Argentine Society of Rheumatology
Silvana Conti	Argentine Society of Rheumatology
Sofía Ornella	Argentine Society of Rheumatology
Susana Isabel Pineda	Argentine Society of Rheumatology
Tatiana Barbich	Argentine Society of Rheumatology
Vanessa Castro Coello	Argentine Society of Rheumatology
Veronica Bellomio	Argentine Society of Rheumatology
Veronica Savio	Argentine Society of Rheumatology
Yohana Tissera	Argentine Society of Rheumatology
Angela Dahle	Arthritis and Rheumatology Consultants, PA
Anne Wolff	Arthritis and Rheumatology Consultants, PA
Archibald Skemp	Arthritis and Rheumatology Consultants, PA
Emily Pfeifer	Arthritis and Rheumatology Consultants, PA
Hammad Bajwa	Arthritis and Rheumatology Consultants, PA
Jeffrey Wilson	Arthritis and Rheumatology Consultants, PA
Jennifer Morgan	Arthritis and Rheumatology Consultants, PA
Jody Hargrove	Arthritis and Rheumatology Consultants, PA
Maren Hilton	Arthritis and Rheumatology Consultants, PA
Nicholas Lebedoff	Arthritis and Rheumatology Consultants, PA
Sara Baig	Arthritis and Rheumatology Consultants, PA
Susan Leonard	Arthritis and Rheumatology Consultants, PA

Vernon Berglund	Arthritis and Rheumatology Consultants, PA
Walter Dorman	Arthritis and Rheumatology Consultants, PA
Christopher Morris	Arthritis Associates of Kingsport
Michael Cannon	Arthritis Consultants of Tidewater
Marcela Posada	Artmedica
Antonio Carlos Ximenes	Artrocenter
Felipe Omura	Artrocenter
Flora Maria D Andrea Marcolino	Artrocenter
Gecilmara Pileggi	Artrocenter
Jose Roberto Silva Miranda	Artrocenter
Josephine Dhar	Ascension St. John Hospital
Ellison Smith	Asheville Arthritis and Osteoporosis Center
Julie Levensgood	Asheville Arthritis and Osteoporosis Center
Kristin Gowin	Asheville Arthritis and Osteoporosis Center
Brahim Dahou	Association Rhumatologues Algériens Privés (ARAP)
Nicola Dalbeth	Auckland District Health Board
Eduardo Cepeda	Austin Diagnostic Clinic
Yves Piette	AZ Sint-Jan Brugge
Bea Maeyaert	AZ Sint-Lucas Brugge
Mieke Devinck	AZ Sint-Lucas Brugge
Karen Joyce Cortez	Baguio General Hospital and Medical Center
Selda ÇELİK	BAKIRKOY DR SADI KONUK EDUCATIONAL AND RESEARCH HOSPITAL, RHEUMATOLOGY DEPARTMENT, Istanbul
Ozan Cemal Icacan	Bakırköy Dr. Sadi Konuk Research And Training Hospital, Istanbul
Frances Stafford	Blackrock Clinic
Aarat Patel	Bon Secours Rheumatology Center
Lucy Thornton	Bradford Royal Infirmary
Derrick Todd	Brigham and Women's Hospital
Jeffrey A. Sparks	Brigham and Women's Hospital
Kristin D'Silva	Brigham and Women's Hospital
Naomi Serling-Boyd	Brigham and Women's Hospital
Tiffany Y-T Hsu	Brigham and Women's Hospital

Zachary Wallace	Brigham and Women's Hospital
Kendra Zuckerman	Bryn Mawr Medical Specialists
Suzanne Chapnick	Cambridge Health Alliance
Denise Hare	Capital Health Rheumatology
Tina Linehan	Capital Health Rheumatology
Laurie Bergstrom	Catalina Pointe Arthritis
Alain Sanchez Rodriguez	Centro Medico ABC
Beatriz Elena Zazueta-Montiel	Centro Medico del Angel
Angel Alejandro Castillo Ortiz	Centro Medico Las Americas
Jaime Hadid	Centro Medico Nacional 20 de Noviembre
Lilia Andrade Ortega	Centro Medico Nacional 20 de Noviembre ISSSTE
Xóchitl Jiménez	Centro Medico Naval
Erick Zamora Tehozol	Centro Medico Pensiones
Cummins Lue	CHI Little Rock Diagnostic Clinic
Ho So	Chinese University of Hong Kong
Mari Yamamoto	Chubu Rosai Hospital
Cassandra Calabrese	Cleveland Clinic
Sebastián Ibáñez	Clínica Alemana de Santiago
Juan Carlos Arana Ruiz	Clinica de Excelencia en Reumatología
Sergio Durán-Barragán	Clínica de Investigación en Reumatología y Obesidad
Lui Cajas	Clinica Universitaria Colombia - Centro Medico Providencia Sanitas
Tea Ahel Pavelić	Clinical Hospital Center Rijeka
Samuel Katsuyuki Shinjo	Clinical Hospital of Faculty of Medicine of University of Sao Paulo
Ricardo Xavier	Clinical Hospital of Porto Alegre
Michel Alexandre Yazbek	Clinical Hospital of University of Campinas
Montserrat Corteguera Coro	Complejo Asistencial Avila
Enrique Giraldo	Complejo Hospitalario
Anne-Marie Chassin-Trubert	Complejo Hospitalario San José
Sasha Dunt	Countess of Chester NHS Foundation Trust
Laura Muntean	County Emergency Hospital
Ileana Filipescu	County Emergency Hospital, Cluj Napoca

Ioana Felea	County Emergency Hospital, Cluj Napoca
Maria Magdalena Tamas	County Emergency Hospital, Cluj Napoca
Simona Rednic	County Emergency Hospital, Cluj Napoca
Celia Fernandez	Cullman Internal Medicine
Barbara Goldstein	Denver Arthritis Clinic
Maria Greenwald	Desert Medical Advances
Branimir Anić	Div Clin Immunol Rheumatol; Dept Int Med, School of Med Zagreb, University Hospital Center Zagreb
Christopher Adams	East Alabama Medical Center
Jimmy Gene Villo	East Avenue Medical Center
Rizza Navarro	East Avenue Medical Center
Arezou Khosroshahi	Emory University
Eva Strakova	Faculty Hospital Prešov
Nilzio Antonio da Silva	Faculty of Medicine of Goias Federal University
Ricardo Acayaba de Toledo	Faculty of Medicine of Sao Jose do Rio Preto
Babur Salim	Fauji Foundation Hospital
Sandra Lucia Euzebio Ribeiro	Federal University of Amazonas
Viviane Angelina de Souza	Federal University of Juiz de Fora
Adriana Maria Kakehasi	Federal University of Minas Gerais
Ana Karla Guedes de Melo	Federal University of Paraiba
Haim Cesar	Federal University of Rio de Janeiro
Sueli Coelho da Silva Carneiro	Federal University of Rio de Janeiro
Edgard Torres dos Reis Neto	Federal University of Sao Paulo
Roberto Ranza	Federal University of Uberlandia
Martina Skamlova	FNSPFDR, Banská Bystrica
Brian Oppermann MD	Geisinger Health System
Samia Araujo de Sousa Studart	General Hospital of Fortaleza
Adam Kilian	George Washington University
Douglas White	Gundersen Health System
Melanie Winter	Gundersen Health System
Gozde Kübra Yardımcı	Hacettepe University Faculty of Medicine
Umut Kalyoncu	Hacettepe University Faculty of Medicine

Gozd Kubra Yardımcı	Hacettepe University Faculty of Medicine, Ankara
Samar Al-Emadi	Hamad Medical Corporation
Christine Graver	Hampshire Hospitals NHS Trust
Eva Rath	Hanusch Krankenhaus, Vienna
Dimitrios Vassilopoulos	Hippokration General Hospital, Athens
Luis Francisco Valdes Corona	Hospital Angeles Lomas
Mercedes Pinto Ortiz	Hospital Ángeles Mocol
Elisa Palalane	Hospital Central de Maputo
Monica Vazquez del Mercado	Hospital Civil de Guadalajara "Dr. Juan I. Menchaca"
Jose A Gomez Puerta	Hospital Clinic Barcelona
CLAUDIA MARQUES	HOSPITAL DAS CLÍNICAS - UFPE
Maria del Pilar Cruz Domínguez	Hospital de Especialidades La Raza (asociación de escleroderma)
Gabriela Maria Guzman Melgar	Hospital del Valle, Honduras
Roberto Muñoz Louis	Hospital Docente Padre Billini
Juan Carlos Cobeta Garcia	Hospital Ernest Lluch, Calatayud
Ariel Salinas	Hospital Essalud Alberto Sabogal Sologuren
Caroline Siegel	Hospital for Special Surgery
Theodore Fields	Hospital for Special Surgery
Mathia Cecilia Aguiar	Hospital General Agustin O`horan
Everardo Alvarez Hernandez	Hospital General de México "Dr. Eduardo Liceaga"
Jose Eduardo Navarro Zarza	Hospital General de Texco "Adolfo Prieto"
David Vega	Hospital General de Zona #17
LUCIA MAYA	Hospital General de Zona #48 IMSS
Salvador Loredó Alanis	Hospital General de Zona No. 3
Fernando Cobos Villanueva	Hospital General de Zona No. 30
Mónica Nancy Fuentes-Hernandez	Hospital General Issste Toluca
Aline Ranzolin	Hospital Getulio Vargas
Glauccio Ricardo Werner de Castro	Hospital Gobernador Celso Ramos
Jossiell Then Báez	Hospital Metropolitano de Santiago(HOMS)
Vladimir Aroja Santos	Hospital Municipal La Portada (Hospital Centinela de COVID-19)
Maria Carmen Torres Martin	Hospital Nuestra Señora Sonsoles, Avila

Blanca Mota	Hospital Privado
Shakira Selvananda	Hospital Pulau Pinang
JOSE ANTONIO VELOZ ARANDA	HOSPITAL REGIONAL ISSSTE LEON
BERNARDO CUNHA	HOSPITAL SARAH-BRASÍLIA
GUO RUEY LING	Hospital Sibü
Juan José Alegre Sancho	Hospital Universitari Dr Peset, Valencia
Cassandra Michel Skinner Taylor	Hospital Universitario "Dr. José Eleuterio González"
Dionicio Angel Galarza Delgado	Hospital Universitario "Dr. José Eleuterio González"
Lorena Pérez-Barbosa	Hospital Universitario "Dr. José Eleuterio González"
Francinne Machado Ribeiro	Hospital Universitário Pedro Ernesto Universidade do Estado do Rio de Janeiro
Jose Campos	Hospital Universitario Puerta de Hierro
Natalia de la Torre-Rubio	Hospital Universitario Puerta de Hierro
Iris Jazmin Colunga Pedraza	Hospital Universitario, Universidad Autonoma de Nuevo Leon
Rebecca Grainger	Hutt Hospital
Laurindo Ferreira da Rocha Junio	IMIP
David Alejandro Herrera-van Oostdam	IMSS
Juárez Mora Ingrid Maribel	IMSS
LILIANA PABLO-OLIVARES	IMSS
Oscar Marquez-Miranda	IMSS
Rina Dalva Neubarth	Institute of Medical Assistance to State Civil Servants of Sao Paulo
Concetta Lamore	Institute of Rheumatic and Autoimmune Diseases
Elliot Rosenstein	Institute of Rheumatic and Autoimmune Diseases
Melissa Harvey	Institute of Rheumatic and Autoimmune Diseases
Neil Kramer	Institute of Rheumatic and Autoimmune Diseases
Nicole Daver	Institute of Rheumatic and Autoimmune Diseases
Jiri Vencovsky	Institute of Rheumatology, Prague
Maria Filkova	Institute of Rheumatology, Prague
Andrés Zúñiga-Vera	Instituto de Reumatología, Hematología y Dermatología (IRHED)
Luis H. Silveira	Instituto Nacional de Cardiología
Diana Cervántes Roset	Instituto Nacional de Ciencias Médicas y Nutrición Salvador Zubirán
Eduardo Martín Nares	Instituto Nacional de Ciencias Médicas y Nutrición Salvador Zubirán

Marina Rull Gabayet	Instituto Nacional de Ciencias Médicas y Nutrición Salvador Zubirán
Tatiana Sofia Rodriguez-Reyna	Instituto Nacional de Ciencias Médicas y Nutrición Salvador Zubirán
Suneya Hogarty	Integrative Arthritis and Pain Consultants
Laurie Hughell	Iowa Arthritis & Osteoporosis Center
Lindsey Clark	Iowa Arthritis & Osteoporosis Center
Mahdi Vojdanian	Iran Rheumatology Center
Monique Hoekstra	Isala Hospital, Zwolle
Theo Zijlstra	Isala Hospital, Zwolle
Servet Akar	Izmir Katip Celebi University Atatürk Training and Research Hospital, Izmir
Hirofumi Amano	Juntendo University
Karen Yeter	Kaiser Permanente
Elena Nikiphorou	King's College Hospital
Lucia Fusi	King's College Hospital
Rosaria Salerno	King's College Hospital
Loreta Bukauskiene	Klaipeda University Hospital
Fatemah Abutiban	Kuwait Rheumatology Association
Elizabeth Macphie	Lancashire and South Cumbria NHS Foundation Trust
Claire Vandavelde	Leeds Teaching Hospitals NHS Trust
Elizabeth Warner	Lister Hospital
Caroline Mulvaney Jones	Llandudno Hospital
VANEET SANDHU	Long Island Regional Arthritis Osteoporosis Care, PC
Leanna Wise	Los Angeles County + USC Medical Center
Daniela Spisakova	Louis Pasteur University Hospital, Košice
Marieta Senčarová	Louis Pasteur University Hospital, Košice
Faizah Siddique	Loyola University Medical Center
Jennifer Magno	Makati Medical Center
Ivy Rivera-Go	Manila Med
Rachel Wallwork	Massachusetts General Hospital
Kristin M. D'Silva, MD	Massachusetts General Hospital, Harvard Medical School
Naomi J. Patel, MD	Massachusetts General Hospital, Harvard Medical School
Geraldine McCarthy	Mater Misericordiae University Hospital

Alí Duarte-García	Mayo Clinic Health System
Emily Gilbert	Mayo Clinic Health System
Maria Valenzuela Almada	Mayo Clinic Health System
Marta Píchová	Medipont plus s.ro. , České Budějovice
Gabriela Belakova	Medman s.r.o., Martin
Byung Ban	Medstar Georgetown University Hospital
Elaine Zobrist	Mercy Hospital
Lynn Ludmer	Mercy Hospital
Deshiré Alpízar-Rodríguez	Mexican College of Rheumatology
Jonathon Brooks	Middlemore hospital
Mark Sapsford	Middlemore Hospital
Sarah Horton	Minerva Health Centre
Farida Al Balushi	Moh
Tamar Tanner	Montefiore Medical Center
Viktoriiia Vasylets	Multifield Medical Centre, Odessa
Kyoko Motomura	National Center for Global health and Medicine
Shiro Ohshima	National Hospital Organization Osaka Minami Medical Center
Dagmar Mičková	National Institute of Rheumatic Diseases, Piešťany
Helena Raffayova	National Institute of Rheumatic Diseases, Piešťany
Martin Zlnay	National Institute of Rheumatic Diseases, Piešťany
Olga Lukacova	National Institute of Rheumatic Diseases, Piešťany
Vanda Mlynarikova	National Institute of Rheumatic Diseases, Piešťany
Marina Hamaguchi	Nihon University Itabashi Hospital
Jane Leeder	Norfolk & Norwich University Hospital
Eric Ruderman	Northwestern Memorial
Evangeline Scopelitis	Ochsner Medical Center Rheumatology Department
Jerald Zakem	Ochsner Medical Center Rheumatology Department
Karen Toribio Toribio	Ochsner Medical Center Rheumatology Department
Robert Quinet	Ochsner Medical Center Rheumatology Department
Tameka Webb-Detiege	Ochsner Medical Center Rheumatology Department
William Davis	Ochsner Medical Center Rheumatology Department

Laura Sampson	Orthopaedics and Rheumatology of the North Shore (ORNS)
NORIHIRO NISHIMOTO	Osaka Rheumatology Clinic
Kristen Young	Parkland Hospital
Inita Bulina	Pauls Stradins Clinical University Hospital, Riga
Julija Zepa	Pauls Stradins Clinical University Hospital, Riga
Sow Lai Kan	Penang General Hospital
Márta Király	Petz Aladár University Teaching Hospital, Győr
Soňa Žlnayová	Poliklinika MarMedico, s.r.o., Nové Mesto nad Váhom
Mauro Keiserman	Pontifical Catholic University of Rio Grande do Sul
A. Patrice Pollock	Private Practice
Abeer Eid	Private Practice
Ashley Maier	Private Practice
Atzintli Martínez	Private Practice
Cara Bailey	Private Practice
Caroline Arroyo	Private Practice
David Snow	Private Practice
Eduardo Martin-Nares	Private Practice
Elvia Moreta	Private Practice
Ericsson Trieu	Private Practice
Ernst Markus Klaus	Private Practice
Fedra Irazoque	Private Practice
Genevieve Katigbak	Private Practice
Gilbert Kepecs	Private Practice
Greta Reyes-Cordero	Private Practice
Jaimie Russell	Private Practice
Jessica Chapman	Private Practice
Joseph Huffstutter	Private Practice
Kara Long	Private Practice
Khurram Abbass	Private Practice
Lauren Kaufman	Private Practice
Marco Martinez Martinez	Private Practice

MONICA MACIAS-PALACIOS	Private Practice
NAGA PRABU	Private Practice
Paloma De Abreu Trigueros	Private Practice
Raheem Kherani	Private Practice
Randall Beyl	Private Practice
Sarah Middleton	Private Practice
Sharath Kumar	Private Practice
Susan Barrett	Private Practice
Viktoria Pavlova	Private Practice
Yanira Yinde	Private Practice
Samir Patel	Queen Elizabeth Hospital Woolwich
Alexandra Balbir-Gurman	Rambam Rheumatology Institute, Haifa
Bruno Ferreira	Rede Sarah de Hospitais de Rabilitação
Kathleen Anthony	Rheumatology and Osteoporosis Specialists
Richard Stern	Rheumatology Associastes
Lilliam Miranda	Rheumatology Center INC
Shabbir Chikani	Rheumatology centre, HCG hospital
Ann Clarke	Richmond Road Diagnostic And Treatment Center
Ammar Haikal	Riverside Medical Group
Michael Guma	Riverside Medical Group
Sushama Mody	Riverside Medical Group
Diana O'Kane	RNHRD at Royal United Hospital Bath
Sheila O'Reilly	Royal Derby Hospital
HUMAID AL WAHSHI	Royal Hospital
Nasra Al-Adhoubi	Royal Hospital
Jenny Tyler	Royal United hospital
Jennifer Tyler	Royal United Hospital, Bath
Vivien Hsu	Rutgers Robert Wood Johnson
Mária Oetterová	Safarik University hospital, Kosice
Audrey Low	Salford Royal NHS FT
Beverley Harrison	Salford Royal NHS FT

Guillermo Pons-Estel	Sanatorio Parque
Mariana Peixoto Guimaraes Ubirajara e Silva de Souza	Santa Casa of Belo Horizonte
Carolina Zorzanelli Costa	Santa Casa of Vitoria
Veronika Sharp	Santa Clara Valley Medical Center
Laura Groseanu	Sf Maria Clinical Hospital, Bucharest
Daric Mueller	Shores Rheumatology PC
Lillian Barra	SJHC London
Tom Appleton	SJHC London
South African Rheumatism and Arthritis Association	South Africa
Laura Chadwick	St Helens & Knowsley NHS Foundation Trust
Richard Conway	St James' Hospital, Dublin
Janet Pope	St. Joseph's Health Care
Maria del Carmen Hernandez	Star Medica Centro
Cecília Resende Brunow Bazzo	State University of Londrina
Steven Feldman	Steven Feldman MD PA
Anna Sabová	Súkromná Reumatologická Ambulancia, Vranov nad Topľou
Talal Ali Al Lawati	Sultan Qaboos University Hospital
Rachael Flood	Tallaght University Hospital
MOOIKHIN HNG	Tareum
Arundathi Jayatilleke	Temple University Hospital
Simeon Grazio	The teaching hospital sisters of charity
Keiko Koshiba	Toho University Omori Medical Center
Masashi Funada	Toho University Omori Medical Center
Midori Sato	Tokyo Medical Center
Fukumi NAKAMURA	Tokyo Metropolitan Bokutoh General Hospital
Kazuhisa Yokota	Tokyo Metropolitan Health and Hospitals Corporation, Ebara Hosipital
Lingli Dong	Tongji Hospital
A. Silvia Ross	Triangle Arthritis & Rheumatology
John FitzGerald	UCLA
Tanaz Kermani	UCLA
Boris Karanovic	UHC Zagreb

Alojzija Hocevar	UMC Ljubljana
Martina Bakosova	UNB Nemocnica Stare Mesto, Bratislava
Manuel Ugarte-Gil	Universidad Científica del Sur-Hospital Guillermo Almenara Irigoyen
Marcelo Pinheiro	Universidade Federal De São Paulo Escola Paulista de Medicina e Escola Paulista de Enfermagem
Su-Ann Yeoh	University College London Hospital
Maria Oetterova	University Hospital
Nicola Gullick	University Hospital
Emőke Šteňová	University Hospital Bratislava
Marko Barešić	University Hospital Center Zagreb
Ivan Padjen	University Hospital Centre Zagreb
Melanie-Ivana Čulo	University Hospital Dubrava, Zagreb
Wilson Bautista Molano	University Hospital Fundación Santa Fe de Bogotá
James Pilcher	University Hospital Lewisham
Kristina Kovačević Stranski	University Hospital Osijek
Lubica Capova	University Hospital, Bratislava
Zelmira Macejova	University Hospital, Košice
Jarosław Nowakowski	University Hospital, Krakow
Takashi Kida	University Hospital, Kyoto Prefectural University of Medicine
SAUDATU ISSAKA	University Hospitals
Licia Maria Henrique da Mota	University of Bras
JoAnn Zell	University of Colorado
Christine Peschken	University of Manitoba
Angelito Flora	University of the Philippines, Philippine General Hospital
Evelyn Salido	University of the Philippines, Philippine General Hospital
Geraldine Zamora	University of the Philippines, Philippine General Hospital
Alison Bays	University of Washington, Seattle
David Karp	UT Southwestern Medical Center
Ezzati Fatemeh	UT Southwestern Medical Center
Guillermo Quiceno	UT Southwestern Medical Center
Kathryn Dao	UT Southwestern Medical Center
APARNA DAS	UTMB

Lauro Quintanilla

Vicki Quincey

Deborah Parks

Kelly Weselman

Fabiane Shizue Sakai

Katie Williams

Kirsty Devine

Lenny Geurts-van Bon

Sarah Goglin

Virginia Medica

Waikato Hospital

Washington University Div of Rheumatology

Wellstar Kennestone Hospital

Windmills Hospital

York District Hospital

York/Scarborough Hospitals

Ziekenhuisgroep Twente

Zuckerberg San Francisco General Hospital

Appendix 2. Psoriasis Patient Registry for Outcomes, Therapy and Epidemiology of COVID-19 Infection (PsoProtect) Consortium.

Name

A van geest
Aadarsh Shah
AC de Waal
Alba Catala
Alberto Barea
Alberto Romero Maté
Alekya Singapore
Alexandra Paolino
Alexandra Vincent
Alice Mwale
Alison Sears
Amy de la Breteque
Amy Foulkes
Ana Brasileiro
Ana Maria Morales Callaghan
Ana Martinez
Andrea Carugno
Andrea Chiricozzi
Andrea Conti
Andrew DeCrescenzo
Andrew Pink
Angela Braeger
Anke Piekar
Ann Jones
Ann Sergeant
Anna Baran

Anne Groeneveld
Annette Essex
Anthony Bewley
Antoine Fauconneau
Antony Raharja
Aparna Sinha
Areti Makrygeorgou
Arias Martín Nadia
Astrid van Huizen
Beata Fabos
Beatriz Pérez Suárez
Benhadou Farida
Birgitta Wilson Claréus
Bola Coker
Canelle Mazaud
Caoimhe Fahy
Caoimhe M. R. Fahy
Carla Tubau Prims
Carmen Bugarin Diz
Caroline Campbell
Carolyn Martin
Carrie Davis
Catherine Holden
Catherine Motosko
Catherine Quinlan
Catriona Maybury
Cesar Gonzalez
Charlotte Barclay
Chifari Angelo
Choon Siew Eng

Cid Yazigi Sabbag
Claudia de la Cruz
Claudia Guebenlian Bakerdjian
Claudio Greco
Cristina Echeverria
Cristina Mariela Echeverría
Dagmara Samselska
Danang Tri Wahyudi
Daniela Armijo
Danielle Brassard
Daryl Teo
David Fairhurst
Deanna Cummings
Deepti Kolli
Denis Jullien
Denise Peeters
Descamps Vincent
Diana Patricia Ruiz Genao
Diana Ruiz Genao
Eileen Parry
Elaine Agius
Eleanor Henderson
Elena Hawryluk
Eliseo Martínez-García
Elizabeth Molina
Elizabeth Stewart
Ellie Henderson
Elzbieta Klujso
Emily Brown
Emily Dwyer

Emmanuel Mahe
Emmanuel Toni
Emmerson Gale Vista
Emmylou Casanova
Enikö Sonkoly
Enrique Loayza
Erin Kamp
Esteban Daudén
Esther Balogh
F Aubin
Felicity Edwards
Ferial Ismail
Fernando Valenzuela
Fikki Orekoya
Florentina-Silvia Delli
Francesca Capon
Freya Meynell
Gabriel Magariños
Gabrielle Becher
Gabrielle Key
Gaelle Quereux
Gaurav Dhawan
Gemma Keogh
Georgi Popov
Georgie King
Girard Celine
Gloria Aparicio
Gordana Krnjevic Pezic
Graham Johnston
Gustavo Anibal Cardozo

H. El Khattabi
Haleema Alfailakawi
Hazel Oon
Hazel Rooney
Helen McAteer
Helene Aubert
Hervé Bachelez
Hoseah Waweru
Ian Pearson
Ignacio Yanguas
Iman Kotb
Ines Barbosa
Isabella Tosi
J Charles
Jack French
James John Murphy
Jamie Weisman
Jennifer Elias
Jennifer Soung
Jenny Carolan
Jenny Hughes
Jill Ramsay
Jing Husaini
JM. Ortiz
Jo Lambert
Joanne Topliffe
Joel M Gelfand
John Newsham
Jonathan Ng
Jose-Manuel Carrascosa

Joseph J Schwartz
Julia Bowman
Julie Charles
Juul van de Reek
Karina Jackson
Karolina Vorčáková
Katarzyna Gryś
Katherine Poirier
Kathryn Kerisit, MD
Kayleigh J Mason
Keith Wu
Kimberly Anne G. Ednalino
Kirsty Wynes
Kyle Eash
Lars Iversen
Laura Speck
Laure Mery-Bossard
Lauren Booker
Leah Hoggan
leandro perrotat
Leila Asfour
Leila Kattach
Leontien de Graaf
Lesort Cécile
Lian van der Gang
Lieve Meuleman
Lim Jin Huang
Linda Lawson
Linda McMahan
Line Kibsgaard

Lisa Kirby
Lisa van der Rijst
Liv Eidsmo
Lluís Rusiñol Batlle
Lone Skov
Lorraine Gribben
Lucy Moorhead
Luigi Naldi
Luis Puig
Lyndsey Florence
M.M. Bakker
Mahira Hamdy El Sayed
Mahmood Abubakar
Malcolm Rustin
Manel Velasco
Mangiarotti Germán
Manisha Panchal
Manja Bloem
Manpreet Lakhan
Manuel Dario Franco
Mara Maccarone
Margot Common
Maria Fernanda Lui
Marie Dedroog
Marie-Eve Fortier
Marie-Louise Svensson
Mariusz Sikora
Mark Vandaele
Maruska Marovt
Masanori Okuse

Matthias Schmuth
Melanie Bruton
Melanie Claridge
Melanie westmoreland
Melissa Sweeney
Michela Magnano
Mireille van Baar
Miriam Saposnik
Mohamed EL-Komy
Musumeci Maria Letizia
N Beneton
Nick J Reynolds
Nick Reynolds
Nora Noemí Kogan
Omid Zargari
Pablo De Caso
Pamela Campbell
Paola Di Meglio
Paolo Gisondi
Paula Bourren
Paula luna
Paulo Varela
Penny Nash
Peter Foley
Peter Holló
Peter Jenkin
Phan Céline
Philip Hampton
Phyllis Spuls
Pia Tookey

Piergiacomo Calzavara-Pinton
Portia Goldsmith
Pter Holló
Rachel Bak
Radhika Patel
Raquel Rivera Diaz
Rebecca Rose
Reinhart Speeckaert
Ricardo Romiti
Richard Warren
Richard Woolf
Rogelio Mercado
Rohima Khatun
Rolland Gyulai
Romana Ceovic
Romana Machackova
Ronald Vender
Rosa Andres Ejarque
Rosa Taberner
Rosalie Juch
Russell cohen md faad
Sandy McBride
Sara Cacciapuoti
Sarah Drummond
Sarah Kirk
Sarah McCusker
Saskia Reeken
Selva Anahí Gutiérrez Yañez
Shanti Ayob
Shrita Shinton

Silvia Pérez Barrio
Simina Stefanescu
Sinan Doğan
Sinéad M Langan
Sophia Mohme
Sophia Strong-Sheldrake
Sophie Wanten
Stefano Piaserico
Stephanie Ball
Stephanie Ogden
Susan Ann Lloyd
Susan Hall
Susan Woollett
Susana Armesto Alonso
Susannah Hoey
Taku Suzuki
Tatiana del Río
Tatiana Pecova
Teena Mackenzie
Telgdy Enikő
Teresa Tsakok
Thomas Beaulieu
Tiago Torres
Ting Seng Tang
Tom Hillary
Tomas Kampe
Toomas Talme
Tracy Brown
Tracy Smith
Tran Hong Truong

Trupti Desai
Victoria Brown
Victoria King
Vito Di Lernia
Wisam Alwan
Ya-Hsin Wang
Yena Kim
Zafeiriou Efterpi
zahira koreja
Zaida Troyano
Zeeshaan Hasan
Zeljko Mijuskovic
Zenas Yiu
Zeynep Topkarci

SUPPLEMENTARY TABLES AND FIGURES

Supplementary table 1. Baseline characteristics of the study population (total, and stratified by medication group)							
Parameter	No DMARDs	csDMARDs only	TNFi	IL-17i/IL-23i/IL12+23i	JAKi	APREMILAST	TOTAL
N	722	867	2298	1017	62	79	5045
General							
Age [years]	49.9 (15.2)	54 (13.4)	48.3 (13.0)	49.9 (12.8)	54.3 (12.5)	56.2 (11.9)	50 (13.5)
≤ 30 years	81 (11.2)	36 (4.2)	226 (9.8)	72 (7.1)	3 (4.8)	3 (3.8)	421 (8.3)
31 – 50 years	281 (38.9)	291 (33.6)	1044 (45.4)	433 (42.6)	19 (30.6)	17 (21.5)	2085 (41.3)
51 – 65 years	252 (34.9)	377 (43.5)	836 (36.4)	402 (39.5)	24 (38.7)	44 (55.7)	1935 (38.4)
66 - 75 years	70 (9.7)	111 (12.8)	152 (6.6)	88 (8.7)	16 (25.8)	11 (13.9)	448 (8.9)
> 75 years	38 (5.3)	52 (6)	40 (1.7)	22 (2.2)	0	4 (5.1)	156 (3.1)
Male sex	357 (49.4)	385 (44.4)	1267 (55.1)	546 (53.7)	20 (32.3)	31 (39.2)	2606 (51.7)
Ever smoker	159 (29.6) (N=538) (NA=184)	196 (31.2) (N=628) (NA=239)	517 (29.1) (N=1777) (NA=521)	308 (35.0) (N=879) (NA=138)	9 (19.6) (N=46) (NA=16)	24 (34.8) (N=69) (NA=10)	1213 (30.8) (N=3937) (NA=1108)
Regions							
African Region	4 (0.6)	6 (0.7)	3 (0.1)	1 (0.1)	0	0	14 (0.3)
Eastern Mediterr. Region	19 (2.6)	17 (2)	27 (1.2)	7 (0.7)	2 (3.2)	0	72 (1.4)
European Region	550 (76.2)	679 (78.3)	1769 (77)	822 (80.8)	35 (56.5)	53 (67.1)	3908 (77.5)
North American Region	102 (14.1)	106 (12.2)	343 (14.9)	128 (12.6)	24 (38.7)	25 (31.6)	728 (14.4)
South American Region	29 (4.0)	38 (4.4)	146 (6.4)	53 (5.2)	1 (1.6)	0	267 (5.3)
South-East Asian Region	5 (0.7)	11 (1.3)	3 (0.1)	1 (0.1)	0	1 (1.3)	21 (0.4)
Western Pacific Region	13 (1.8)	10 (1.2)	7 (0.3)	5 (0.5)	0	0	35 (0.7)
Time period							
Until June 15, 2020	253 (35.0)	304 (35.1)	756 (32.9)	357 (35.1)	20 (32.3)	35 (44.3)	1725 (34.2)
June 16 to Dec 31, 2020	297 (41.1)	367 (42.3)	1073 (46.7)	469 (46.1)	27 (43.5)	30 (38)	2263 (44.9)
January 1, 2021 or later	172 (23.8)	196 (22.6)	469 (20.4)	191 (18.8)	15 (24.2)	14 (17.7)	1057 (21)
Immune-mediated inflammatory diseases							
SpA	309 (42.8)	164 (18.9)	1176 (51.2)	171 (16.8)	11 (17.7)	0	1831 (36.3)
PsA	234 (32.4)	607 (70.0)	895 (38.9)	446 (43.9)	51 (82.3)	60 (75.9)	2293 (45.5)
Psoriasis (no arthritis)	179 (24.8)	96 (11.1)	227 (9.9)	400 (39.3)	0	19 (24.1)	921 (18.3)
Disease activity							
	N=606 (NA=116)	N=762 (NA=105)	N=1821 (NA=477)	N=918 (NA=99)	N=49 (NA=13)	N=77 (NA=2)	N=4233 (NA=812)
Remission, min./low DA	432 (71.3)	625 (82)	1567 (86.1)	782 (85.2)	32 (65.3)	62 (80.5)	3500 (82.7)
Moderate, sev./high DA	174 (28.7)	137 (18)	254 (13.9)	136 (14.8)	17 (34.7)	15 (19.5)	733 (17.3)
Ordinal outcome							
Not hospitalized/dead	573 (79.4)	654 (75.4)	2026 (88.2)	864 (85)	45 (72.6)	58 (73.4)	4220 (83.7)
Hospitalized, no death	128 (17.7)	186 (21.5)	248 (10.8)	146 (14.4)	10 (16.1)	18 (22.8)	736 (14.6)
Death	21 (2.9)	27 (3.1)	24 (1)	7 (0.7)	7 (11.3)	3 (3.8)	89 (1.8)
Comorbidities							
	N=714 (NA=8)	N=854 (NA=13)	N=2281 (NA=17)	N=1008 (NA=9)	N=62 (NA=0)	N=77 (NA=2)	N=4996 (NA=49)

Hypertension	183 (25.6)	263 (30.8)	555 (24.3)	285 (28.3)	13 (21.0)	24 (31.2)	1323 (26.5)
Cardiovascular disease	56 (7.8)	84 (9.8)	109 (4.8)	81 (8.0)	0	8 (10.4)	338 (6.8)
COPD or asthma	52 (7.3)	58 (6.8)	130 (5.7)	102 (10.1)	12 (19.4)	7 (9.1)	361 (7.2)
Other lung disease	15 (2.1)	13 (1.5)	37 (1.6)	27 (2.7)	4 (6.5)	3 (3.9)	99 (2.0)
Chronic kidney disease	14 (2.0)	23 (2.7)	36 (1.6)	23 (2.3)	1 (1.6)	4 (5.2)	101 (2.0)
Obesity (BMI >= 30)	137 (19.2)	171 (20.0)	426 (18.7)	289 (28.7)	12 (19.4)	18 (23.4)	562 (11.2)
Diabetes	81 (11.3)	104 (12.2)	227 (10.0)	133 (13.2)	7 (11.3)	10 (13.0)	115 (2.3)
Cancer	31 (4.3)	24 (2.8)	20 (0.9)	28 (2.8)	1 (1.6)	11 (14.3)	1053 (21.1)
number of comorbidities	0.8 (1.1)	0.9 (1.2)	0.7 (1.0)	1 (1.3)	0.8 (1.0)	1.3 (1.4)	0.8 (1.1)
No comorbidity	371 (52.0)	436 (51.1)	1313 (57.6)	461 (45.7)	33 (53.2)	29 (37.7)	2643 (52.9)
One comorbidity	187 (26.2)	224 (26.2)	524 (23)	271 (26.9)	14 (22.6)	19 (24.7)	1239 (24.8)
Two comorbidities	98 (13.7)	107 (12.5)	281 (12.3)	144 (14.3)	12 (19.4)	16 (20.8)	658 (13.2)
≥ 3 comorbidities	58 (8.1)	87 (10.2)	163 (7.1)	132 (13.1)	3 (4.8)	13 (16.9)	456 (9.1)
csDMARD therapy							
csDMARDs	0	867 (100)	487 (21.2)	138 (13.6)	22 (35.5)	14 (17.7)	1528 (30.3)
Methotrexate	0	649 (74.9)	388 (16.9)	119 (11.7)	18 (29.0)	9 (11.4)	1183 (23.4)
Leflunomide	0	64 (7.4)	30 (1.3)	7 (0.7)	3 (4.8)	3 (3.8)	107 (2.1)
Sulfasalazine	0	181 (20.9)	86 (3.7)	12 (1.2)	3 (4.8)	1 (1.3)	283 (5.6)
Antimalarials	0	27 (3.1)	8 (0.4)	1 (0.1)	0	1 (1.3)	37 (0.7)
Cyclosporine	0	14 (1.6)	2 (0.1)	3 (0.3)	0	0	19 (0.4)
Further therapies							
Glucocorticoids (#)	52 (7.4) (N=698) (NA=24)	112 (13.1) (N=858) (NA=9)	121 (5.4) (N=2229) (NA=69)	57 (5.7) (N=1004) (NA=13)	12 (20.7) (N=58) (NA=4)	3 (3.9) (N=76) (NA=3)	357 (7.3) (N=4923) (NA=122)
0 mg/d < GCs <= 7.5 mg/d	31 (4.5) (N=691) (NA=31)	73 (8.6) (N=847) (NA=20)	75 (3.4) (N=2198) (NA=100)	38 (3.8) (N=991) (NA=26)	5 (9.1) (N=55) (NA=7)	2 (2.6) (N=76) (NA=3)	224 (4.6) (N=4858) (NA=187)
GCs > 7.5 mg/d	14 (2.0) (N=691) (NA=31)	27 (3.2) (N=847) (NA=20)	14 (0.6) (N=2198) (NA=100)	6 (0.6) (N=991) (NA=26)	4 (7.3) (N=55) (NA=7)	1 (1.3) (N=76) (NA=3)	66 (1.4) (N=4858) (NA=187)
NSAIDs	214 (31.9) (N=671) (NA=51)	199 (24.8) (N=802) (NA=65)	480 (23.9) (N=2012) (NA=286)	175 (18.2) (N=961) (NA=56)	14 (25.0) (N=56) (NA=6)	15 (20.8) (N=72) (NA=7)	1097 (24.0) (N=4574) (NA=471)
Acitretin	25 (3.5)	1 (0.1)	2 (0.1)	0	1 (1.6)	0	29 (0.6)

Data are N (column %) for categorical variables or mean (SD) for continuous variables. Table includes patients diagnosed with psoriasis, psoriatic arthritis or axial spondyloarthritis, with a non-missing ordinal outcome and non-missing values for age, sex, and disease-modifying anti-rheumatic drugs (DMARDs). Further, patients receiving DMARDs not typical for the three diagnoses were excluded, as well as patients with some additional rheumatic diseases (529 patients excluded in total). Data refers to patients with non-missing values for the respective variable; total N for patients with non-missing values is given in parentheses for variables with missing values; the total number of missing values is also given in parenthesis, for the applicable variables. (#) Includes patients with a missing glucocorticoid dosage.

bDMARD, biological disease-modifying anti-rheumatic drugs; BMI, body mass index; csDMARD, conventional synthetic disease-modifying anti-rheumatic drugs; DMARD, disease-modifying anti-rheumatic drugs; IL, interleukin; JAK, Janus kinase; N, number; NSAID, non-steroidal anti-inflammatory drugs; TNF; tumour necrosis factor; tsDMARD, targeted synthetic disease-modifying anti-rheumatic drugs.

Supplementary table 2. Baseline characteristics of the study population (total, and stratified by COVID-19 outcome)				
Parameter	Not hospitalised, no death	Hospitalised, no death	Death	Total
N	4220	736	89	5045
General				
Age [years]	48.4 (12.8)	57.3 (13.5)	67.7 (13.3)	50 (13.5)
≤ 30 years	406 (9.6)	15 (2)	0	421 (8.3)
31 – 50 years	1869 (44.3)	207 (28.1)	9 (10.1)	2085 (41.3)
51 – 65 years	1588 (37.6)	317 (43.1)	30 (33.7)	1935 (38.4)
66 - 75 years	297 (7)	129 (17.5)	22 (24.7)	448 (8.9)
> 75 years	60 (1.4)	68 (9.2)	28 (31.5)	156 (3.1)
Male sex	2130 (50.5)	419 (56.9)	57 (64)	2606 (51.7)
Ever smoker	999 (30.8) (N=3246) (Missing=974)	194 (31.0) (N=626) (Missing=110)	20 (30.8) (N=65) (Missing=24)	1213 (30.8) (N=3937) (Missing=1108)
Regions				
African Region	9 (0.2)	5 (0.7)	0	14 (0.3)
Eastern Mediterranean Region	59 (1.4)	13 (1.8)	0	72 (1.4)
European Region	3300 (78.2)	550 (74.7)	58 (65.2)	3908 (77.5)
North American Region	609 (14.4)	98 (13.3)	21 (23.6)	728 (14.4)
South American Region	221 (5.2)	36 (4.9)	10 (11.2)	267 (5.3)
South-East Asian Region	8 (0.2)	13 (1.8)	0	21 (0.4)
Western Pacific Region	14 (0.3)	21 (2.9)	0	35 (0.7)
Pandemic time period				
Until June 15, 2020	1285 (30.5)	395 (53.7)	45 (50.6)	1725 (34.2)
From June 16 to December 31, 2020	2018 (47.8)	217 (29.5)	28 (31.5)	2263 (44.9)
January 1, 2021, and later	917 (21.7)	124 (16.8)	16 (18)	1057 (21)
Immune-mediated inflammatory disease				
Axial spondyloarthritis	1576 (37.3)	229 (31.1)	26 (29.2)	1831 (36.3)
Psoriatic arthritis	1850 (43.8)	392 (53.3)	51 (57.3)	2293 (45.5)
Psoriasis (without arthritis)	794 (18.8)	115 (15.6)	12 (13.5)	921 (18.3)
Disease activity				
	N=3572 (Missing=648)	N=589 (Missing=147)	N=72 (Missing=17)	N=4233 (Missing=812)
Remission/low disease activity	2986 (83.6)	458 (77.8)	56 (77.8)	3500 (82.7)
Moderate/high disease activity	586 (16.4)	131 (22.2)	16 (22.2)	733 (17.3)
Comorbidities				
	N=4178 (Missing=42)	N=730 (Missing=6)	N=88 (Missing=1)	N=4996 (Missing=49)
Hypertension	973 (23.3)	302 (41.4)	48 (54.5)	1323 (26.5)
Cardiovascular disease	210 (5)	100 (13.7)	28 (31.8)	338 (6.8)
COPD or asthma	254 (6.1)	86 (11.8)	21 (23.9)	361 (7)
Other chronic lung disease	54 (1.3)	34 (4.7)	11 (12.5)	99 (2)
Chronic kidney disease	46 (1.1)	41 (5.6)	14 (15.9)	101 (2)
Diabetes	371 (8.9)	162 (22.2)	29 (33)	562 (11.2)
Cancer	70 (1.7)	36 (4.9)	9 (10.2)	115 (2.3)
Obesity	830 (19.9)	198 (27.1)	25 (28.4)	1053 (21.1)
Number of comorbidities	0.7 (1)	1.4 (1.4)	2.3 (1.8)	0.8 (1.1)
No comorbidity	2397 (57.4)	230 (31.5)	16 (18.2)	2643 (52.9)
One comorbidity	1004 (24)	217 (29.7)	18 (20.5)	1239 (24.8)
Two comorbidities	494 (11.8)	146 (20)	18 (20.5)	658 (13.2)
≥ 3 comorbidities	283 (6.8)	137 (18.8)	36 (40.9)	456 (9.1)
DMARDs				

(monotherapy or combination therapy)				
csDMARDs	1185 (28.1)	309 (42)	34 (38.2)	1528 (30.3)
Antimalarials	30 (0.7)	7 (1)	0	37 (0.7)
Methotrexate	915 (21.7)	246 (33.4)	22 (24.7)	1183 (23.4)
Leflunomide	82 (1.9)	22 (3)	3 (3.4)	107 (2.1)
Sulfasalazine	210 (5)	60 (8.2)	13 (14.6)	283 (5.6)
Cyclosporine	18 (0.4)	1 (0.1)	0	19 (0.4)
bDMARDs	2890 (68.5)	394 (53.5)	31 (34.8)	3315 (65.7)
TNF inhibitors	2026 (48)	248 (33.7)	24 (27)	2298 (45.6)
IL-17 inhibitors	520 (12.3)	88 (12)	2 (2.2)	610 (12.1)
IL-23/IL-12+23 inhibitors	344 (8.2)	58 (7.9)	5 (5.6)	407 (8.1)
tsDMARDs	103 (2.4)	28 (3.8)	10 (11.2)	141 (2.8)
JAK inhibitors	45 (1.1)	10 (1.4)	7 (7.9)	62 (1.2)
Apremilast	58 (1.4)	18 (2.4)	3 (3.4)	79 (1.6)
No DMARD treatment	573 (13.6)	128 (17.4)	21 (23.6)	722 (14.3)
Other therapies				
Glucocorticoids (#)	251 (6.1) (N=4116) (Missing=104)	89 (12.3) (N=722) (Missing=14)	17 (20) (N=85) (Missing=4)	357 (7.3) (N=4923) (Missing=122)
0 mg/d < Glucocorticoids <= 7.5 mg/d	165 (4) (N=4078) (Missing=142)	48 (6.9) (N=697) (Missing=39)	11 (13.3) (N=83) (Missing=6)	224 (4.6) (N=4858) (Missing=187)
Glucocorticoids > 7.5 mg/d	46 (1.1) (N=4078) (Missing=142)	16 (2.3) (N=697) (Missing=39)	4 (4.8) (N=83) (Missing=6)	66 (1.4) (N=4858) (Missing=187)
NSAIDs	948 (24.8) (N=3824) (Missing=396)	137 (20.3) (N=674) (Missing=62)	12 (15.8) (N=76) (Missing=13)	1097 (24) (N=4574) (Missing=471)
Acitretin	22 (0.5)	5 (0.7)	2 (2.2)	29 (0.6)

Data are N (column %) for categorical variables or mean (SD) for continuous variables. Data refers to patients with non-missing values for the respective variable; total N for patients with non-missing values is given in parentheses for variables with missing values; the total number of missing values is also given in parenthesis, for the applicable variables. (#) Includes patients with a missing glucocorticoid dosage.

bDMARD, biological disease-modifying anti-rheumatic drugs; BMI, body mass index; csDMARD, conventional synthetic disease-modifying anti-rheumatic drugs; DMARD, disease-modifying anti-rheumatic drugs; IL, interleukin; JAK, Janus kinase; N, number; NSAID, non-steroidal anti-inflammatory drugs; TNF; tumour necrosis factor; tsDMARD, targeted synthetic disease-modifying anti-rheumatic drugs.

Supplementary Table 3. Multivariable ordinal logistic regression analysis of factors associated with COVID-19 severity, stratified by IMID (PsA, axSpA and PsO)												
	Psoriatic arthritis				Axial spondyloarthritis				Psoriasis (without arthritis)			
N total	2293				1818				912			
N deaths / hospitalizations without death / other	51 / 392 / 1850				26 / 229 / 1563				12 / 115 / 785			
	N deaths / hospitalizations without death / neither	OR	95% CI		N deaths / hospitalizations without death / neither	OR	95% CI		N deaths / hospitalizations without death / neither	OR	95% CI	
Male sex (vs. female)	26 / 205 / 822	1.50	1.18	1.91	21 / 132 / 837	1.41	1.04	1.93	10 / 82 / 458	2.12	1.32	3.42
Pandemic time period												
Until June 15 th , 2020	24 / 207 / 513	1	[Reference]		13 / 123 / 423	1	[Reference]		8 / 65 / 338	1	[Reference]	
June 16, 2020 – December 31, 2020	16 / 117 / 910	0.41	0.31	0.55	11 / 71 / 792	0.36	0.26	0.52	1 / 29 / 308	0.52	0.31	0.88
January 1, 2021, and later	11 / 68 / 427	0.53	0.37	0.75	2 / 35 / 348	0.35	0.22	0.56	3 / 21 / 139	0.89	0.49	1.63
Comorbidities												
Hypertension alone (vs. no hypertension, no CVD)	18 / 141 / 466	1.06	0.79	1.41	8 / 68 / 255	1.49	1.01	2.19	2 / 34 / 120	1.69	0.97	2.95
CVD alone (vs. no hypertension, no CVD)	2 / 18 / 31	1.46	0.76	2.83	3 / 11 / 22	2.77	1.25	6.13	2 / 9 / 22	1.71	0.67	4.36
CVD and hypertension (vs. no hypertension, no CVD)	11 / 37 / 81	1.07	0.66	1.74	5 / 15 / 33	1.72	0.82	3.62	5 / 11 / 22	2.00	0.83	4.83
COPD or asthma	14 / 49 / 124	1.95	1.34	2.82	5 / 23 / 86	1.40	0.81	2.40	2 / 14 / 46	2.02	0.94	4.35
Other chronic lung disease	3 / 21 / 23	2.41	1.28	4.55	5 / 7 / 18	2.75	1.18	6.40	3 / 6 / 13	2.94	1.11	7.78
Chronic kidney disease	9 / 26 / 26	2.56	1.46	4.48	3 / 11 / 10	3.04	1.22	7.54	2 / 5 / 10	1.10	0.34	3.54
Obesity alone (vs. no obesity, no diabetes)	9 / 75 / 306	1.40	1.02	1.94	1 / 33 / 189	1.37	0.87	2.15	1 / 30 / 175	1.31	0.77	2.26
Diabetes mellitus alone (vs. no obesity, no diabetes)	6 / 60 / 115	1.85	1.25	2.74	5 / 23 / 60	1.54	0.88	2.70	4 / 19 / 36	3.33	1.68	6.61

Obesity and diabetes mellitus (vs. no obesity, no diabetes)	10 / 35 / 93	1.85	1.18	2.92	3 / 9 / 27	1.82	0.79	4.21	1 / 17 / 42	2.00	0.93	4.30
Cancer and known smoking habits (vs. no cancer, never smoked)	2 / 19 / 30	1.20	0.62	2.33	0 / 4 / 11	1.01	0.26	3.89	2 / 6 / 16	1.28	0.45	3.60
Cancer and unknown smoking habits (vs. no cancer, never smoked)	2 / 4 / 8	2.74	0.86	8.74	3 / 3 / 5	2.42	0.59	9.92		n.a.		
No cancer and ever smoked or unknown smoking habits (vs. no cancer, never smoked)	24 / 155 / 934	0.83	0.63	1.09	11 / 83 / 716	0.88	0.59	1.32	3 / 43 / 272	0.98		
Medication												
No DMARD therapy	8 / 49 / 177	1	[Reference]		8 / 47 / 254	1	[Reference]		5 / 32 / 141	1	[Reference]	
Antimalarials	0 / 3 / 12	0.78	0.17	3.45	0 / 1 / 2	1.96	0.13	30.73		n.a.		
Methotrexate	11 / 101 / 342	0.97	0.64	1.47	2 / 14 / 35	1.70	0.80	3.61	0 / 18 / 72	0.77	0.37	1.58
Leflunomide	2 / 16 / 36	1.24	0.60	2.59		n.a.				n.a.		
Sulfasalazine	7 / 15 / 54	1.86	0.98	3.54	5 / 17 / 82	1.25	0.66	2.37				
Cyclosporine	0 / 1 / 10	0.61	0.07	5.13		n.a.						
TNF inhibitors	11 / 104 / 780	0.47	0.32	0.71	10 / 128 / 1038	0.75	0.49	1.13	3 / 16 / 207	0.38	0.19	0.75
IL-17 inhibitors	1 / 49 / 251	0.56	0.34	0.90	1 / 21 / 142	0.71	0.38	1.33	0 / 18 / 127	0.53	0.25	1.12
IL-23/IL-12+23 inhibitors	3 / 31 / 111	0.76	0.43	1.34		n.a.			2 / 27 / 225	0.43	0.23	0.82
JAK inhibitors	7 / 9 / 35	1.65	0.80	3.42	0 / 1 / 10	0.52	0.06	4.72		n.a.		
Apremilast	1 / 14 / 45	0.91	0.43	1.91		n.a.			2 / 4 / 13	1.14	0.34	3.76
Disease activity (DA) and glucocorticoids (GCs)												
Remission/low DA, no GCs	30 / 273 / 1431	1	[Reference]		18 / 159 / 1274	1	[Reference]		9 / 83 / 64	1	[Reference]	
Remission/low DA, GCs	9 / 35 / 121	1.63	1.02	2.59	4 / 21 / 53	2.54	1.41	4.57	0 / 2 / 3	2.18	0.24	20.25
Moderate/high DA, no GCs	8 / 63 / 241	1.44	1.01	2.04	3 / 37 / 213	1.60	0.99	2.59	3 / 30 / 141	1.11	0.65	1.90

Moderate/high DA, GCs	4 / 21 / 57	2.02	1.12	3.64	2 / 11 / 23	2.85	1.25	6.52		n.a.		
NSAIDs	8 / 75 / 479	0.75	0.55	1.02	6 / 69 / 565	0.72	0.48	1.09	2 / 7 / 23	1.69	0.65	4.40

Results for ordinal mixed effects logistic regression analysis in patients with specific disease entities. Shown are fixed effects, random effects for country are not shown. Missing values are imputed via multiple imputation, patient numbers may thus be rounded. The model was additionally adjusted for age employing five-knot restricted cubic splines. Significant associations highlighted in bold.

axSpA, axial spondyloarthritis; bDMARD, biological disease-modifying anti-rheumatic drugs; BMI, body mass index; csDMARD, conventional synthetic disease-modifying anti-rheumatic drugs; DMARD, disease-modifying anti-rheumatic drugs; IL, interleukin; JAK, Janus kinase; N, number; NSAID, non-steroidal anti-inflammatory drugs; PsA, psoriatic arthritis; PsO, psoriasis without arthritis; TNF; tumour necrosis factor; tsDMARD, targeted synthetic disease-modifying anti-rheumatic drugs.

Supplementary Table 4. Sensitivity analysis – Multivariable ordinal logistic regression analysis of factors associated with COVID-19 severity (confirmed cases)				
N deaths/hospitalisations/neither	75 / 680 / 3421			
	N deaths/ hospitalizations/neither	OR	95% CI	
Male sex (vs. female)	47 / 387 / 1733	1.48	1.23	1.78
Pandemic time period				
Until June 15 th , 2020	36 / 361 / 739	1	[Reference]	
June 16, 2020 – December 31, 2020	24 / 203 / 1858	0.28	0.23	0.35
January 1, 2021, and later	15 / 116 / 824	0.36	0.28	0.47
Comorbidities				
Hypertension alone (vs. no hypertension, no CVD)	21 / 228 / 678	1.32	1.05	1.66
CVD alone (vs. no hypertension, no CVD)	6 / 35 / 62	1.84	1.14	2.97
CVD and hypertension (vs. no hypertension, no CVD)	18 / 55 / 117	1.28	0.86	1.90
COPD or asthma	19 / 78 / 202	1.83	1.35	2.47
Other chronic lung disease	10 / 34 / 47	2.35	1.48	3.74
Chronic kidney disease	11 / 38 / 36	2.39	1.48	3.87
Obesity alone (vs. no obesity, no diabetes)	9 / 130 / 554	1.36	1.06	1.74
Diabetes mellitus alone (vs. no obesity, no diabetes)	14 / 97 / 171	1.91	1.40	2.60
Obesity and diabetes mellitus (vs. no obesity, no diabetes)	10 / 53 / 135	1.65	1.13	2.42
Cancer and known smoking habits (vs. no cancer, never smoked)	3 / 28 / 47	1.09	0.63	1.88
Cancer and unknown smoking habits (vs. no cancer, never smoked)	4 / 6 / 11	2.80	1.04	7.51
No cancer and ever smoked or unknown smoking habits (vs. no cancer, never smoked)	32 / 256 / 1662	0.84	0.67	1.04
Rheumatic disease				
Psoriatic arthritis	43 / 354 / 1535	1	[Reference]	
Axial spondyloarthritis	21 / 215 / 1308	1.08	0.86	1.36
Psoriasis (without arthritis)	11 / 111 / 578	0.55	0.41	0.74
Medication				
No DMARD therapy	20 / 124 / 492	1	[Reference]	
Antimalarials	0 / 4 / 13	1.09	0.29	4.05
Methotrexate	12 / 122 / 371	1.00	0.73	1.39
Leflunomide	1 / 13 / 36	0.79	0.37	1.72
Sulfasalazine	10 / 32 / 113	1.54	0.97	2.44
Cyclosporine	0 / 1 / 12	0.41	0.05	3.46
TNF inhibitors	18 / 226 / 1628	0.60	0.46	0.79
IL-17 inhibitors	1 / 80 / 412	0.67	0.47	0.96

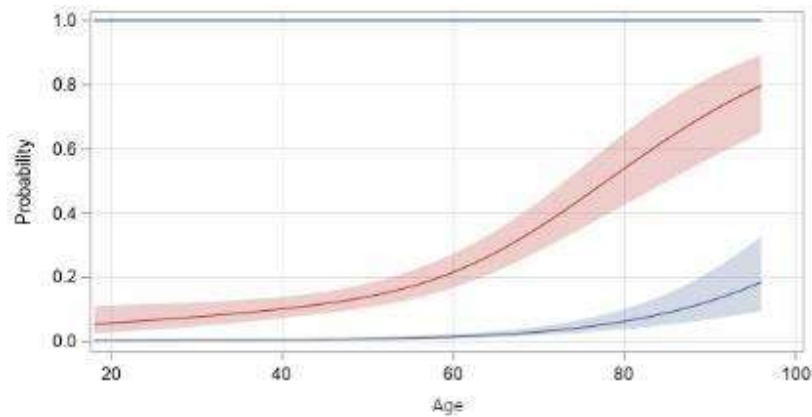
IL-23/IL-12+23 inhibitors	3 / 53 / 264	0.66	0.43	0.9999
JAK inhibitors	7 / 8 / 41	1.43	0.71	2.87
Apremilast	3 / 17 / 42	1.34	0.69	2.59
Disease activity (DA) and glucocorticoids (GCs)				
Remission/low DA, no GCs	49 / 477 / 2748	1	[Reference]	
Remission/low DA, GCs	10 / 57 / 156	1.78	1.22	2.60
Moderate/high DA, no GCs	12 / 119 / 449	1.46	1.12	1.90
Moderate/high DA, GCs	4 / 27 / 68	1.81	1.06	3.08
NSAIDs	13 / 138 / 878	0.76	0.59	0.97
<p>Results for ordinal mixed effects logistic regression analysis in patients with a confirmed COVID-19 diagnosis. Shown are fixed effects, random effects for country are not shown. Missing values are imputed via multiple imputation, patient numbers may thus be rounded. The model was additionally adjusted for age employing four-knot restricted cubic splines. Significant associations highlighted in bold.</p> <p>bDMARD, biological disease-modifying anti-rheumatic drugs; BMI, body mass index; csDMARD, conventional synthetic disease-modifying anti-rheumatic drugs; DMARD, disease-modifying anti-rheumatic drugs; IL, interleukin; JAK, Janus kinase; N, number; NSAID, non-steroidal anti-inflammatory drugs; TNF, tumour necrosis factor; tsDMARD, targeted synthetic disease-modifying anti-rheumatic drugs.</p>				

Supplementary Table 5. Sensitivity analysis – Multivariable binary logistic regression analysis of factors associated with COVID-19 severity (outcome hospitalisation)				
N hospitalizations /other	837 / 4220			
	N hospitalizations/other	OR	95% CI	
Male sex (vs. female)	479 / 2130	1.50	1.26	1.79
Pandemic time period				
Until June 15 th , 2020	442 / 1285	1	[Reference]	
June 16, 2020 – December 31, 2020	250 / 2018	0.40	0.33	0.49
January 1, 2021, and later	145 / 917	0.51	0.40	0.66
Comorbidities				
Hypertension alone (vs. no hypertension, no CVD)	272 / 847	1.31	1.05	1.62
CVD alone (vs. no hypertension, no CVD)	45 / 76	1.92	1.22	3.02
CVD and hypertension (vs. no hypertension, no CVD)	87 / 136	1.36	0.93	1.98
COPD or asthma	111 / 257	1.69	1.27	2.25
Other chronic lung disease	45 / 55	2.39	1.49	3.82
Chronic kidney disease	58 / 46	2.29	1.44	3.66
Obesity alone (vs. no obesity, no diabetes)	153 / 676	1.38	1.09	1.74
Diabetes mellitus alone (vs. no obesity, no diabetes)	117 / 212	1.92	1.43	2.58
Obesity and diabetes mellitus (vs. no obesity, no diabetes)	75 / 162	1.75	1.22	2.51
Cancer and known smoking habits (vs. no cancer, never smoked)	33 / 57	1.19	0.70	2.02
Cancer and unknown smoking habits (vs. no cancer, never smoked)	13 / 13	2.06	0.80	5.33
No cancer and ever smoked or unknown smoking habits (vs. no cancer, never smoked)	330 / 1933	0.87	0.71	1.06
Rheumatic disease				
Psoriatic arthritis	450 / 1850	1	[Reference]	
Axial spondyloarthritis	260 / 1576	1.08	0.87	1.35
Psoriasis (without arthritis)	127 / 794	0.47	0.36	0.63
Medication				
No DMARD therapy	151 / 573	1	[Reference]	
Antimalarials	4 / 14	1.20	0.33	4.39
Methotrexate	49 / 449	1.12	0.82	1.53
Leflunomide	18 / 42	1.13	0.56	2.27
Sulfasalazine	44 / 136	1.25	0.79	1.97
Cyclosporine	1 / 18	0.31	0.04	2.46
TNF inhibitors	278 / 2026	0.59	0.46	0.77
IL-17 inhibitors	91 / 520	0.69	0.49	0.96
IL-23/IL-12+23 inhibitors	63 / 344	0.74	0.50	1.10

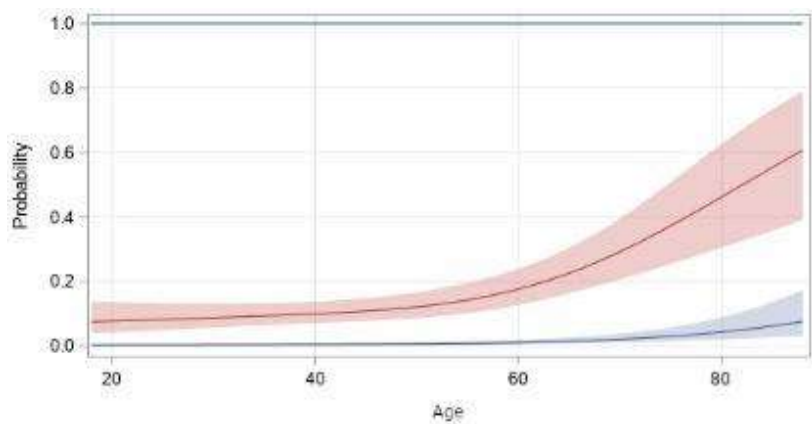
JAK inhibitors	17 / 45	1.34	0.68	2.65
Apremilast	21 / 58	1.07	0.57	2.00
Disease activity (DA) and glucocorticoids (GCs)				
Remission/low DA, no GCs	580 / 3358	1	[Reference]	
Remission/low DA, GCs	74 / 177	1.97	1.38	2.82
Moderate/high DA, no GCs	145 / 504	1.36	1.07	1.74
Moderate/high DA, GCs	38 / 82	2.34	1.43	3.81
NSAIDs	171 / 1072	0.78	0.61	0.99
<p>Results for binary mixed effects logistic regression analysis in all patients, for the outcome of hospitalization. Shown are fixed effects, random effects for country are not shown. Missing values are imputed via multiple imputation, patient numbers may thus be rounded. The model was additionally adjusted for age employing four-knot restricted cubic splines. Significant associations highlighted in bold.</p> <p>bDMARD, biological disease-modifying anti-rheumatic drugs; BMI, body mass index; csDMARD, conventional synthetic disease-modifying anti-rheumatic drugs; DMARD, disease-modifying anti-rheumatic drugs; IL, interleukin; JAK, Janus kinase; N, number; NSAID, non-steroidal anti-inflammatory drugs; TNF; tumour necrosis factor; tsDMARD, targeted synthetic disease-modifying anti-rheumatic drugs.</p>				

Supplementary Table 6. Sensitivity analysis – Multivariable binary logistic regression analysis of factors associated with COVID-19 severity (outcome death)				
N deaths / survivors	89 / 5070			
	N deaths/ survivors	OR	95% CI	
Male sex (vs. female)	57 / 2605	2.00	1.22	3.26
Pandemic time period				
Until June 15 th , 2020	45 / 1723	1	[Reference]	
June 16, 2020, and later	44 / 3347	0.67	0.41	1.10
Comorbidities				
Three or more comorbidities (vs. 0 – 2 comorbidities)	36 / 435	3.34	1.98	5.63
Smoking habits				
Ever smoked (vs. never smoked)	20/ 1209	0.76	0.41	1.39
Unknown smoking habits (vs. never smoked)	24 / 1141	1.99	0.95	4.16
Medication				
No DMARD therapy	21 / 714	1	[Reference]	
Methotrexate	13 / 596	0.57	0.26	1.24
Leflunomide	2 / 61	0.58	0.11	3.03
Sulfasalazine	12 / 171	2.64	1.13	6.17
TNF inhibitors	24 / 2360	0.50	0.26	0.98
IL-17 inhibitors	2 / 625	0.11	0.02	0.51
IL-23/IL-12+23 inhibitors	5 / 403	0.39	0.13	1.14
JAK inhibitors	7 / 58	7.49	2.61	21.47
Apremilast	3 / 82	1.05	0.25	4.40
Disease activity (DA) and glucocorticoids (GCs)				
Moderate/high DA (vs. remission/low DA)	20 / 857	1.12	0.60	2.06
GC therapy (vs. no GC therapy)	18 / 352	1.91	1.002	3.64
NSAIDs	16 / 1252	0.81	0.42	1.54
<p>Results for binary mixed effects logistic regression analysis in all patients, for the outcome death. Shown are fixed effects, random effects for country are not shown. Missing values are imputed via multiple imputation, patient numbers may thus be rounded. The model was additionally adjusted for age employing three-knot restricted cubic splines. Significant associations highlighted in bold.</p> <p>bDMARD, biological disease-modifying anti-rheumatic drugs; BMI, body mass index; csDMARD, conventional synthetic disease-modifying anti-rheumatic drugs; DMARD, disease-modifying anti-rheumatic drugs; IL, interleukin; JAK, Janus kinase; N, number; NSAID, non-steroidal anti-inflammatory drugs; TNF; tumour necrosis factor; tsDMARD, targeted synthetic disease-modifying anti-rheumatic drugs.</p>				

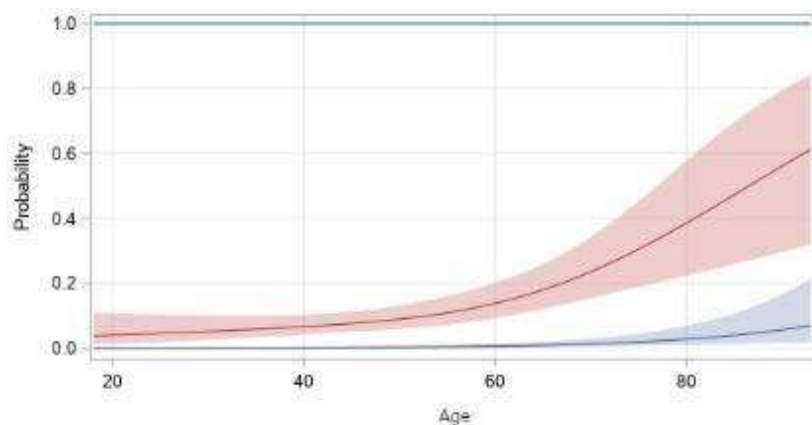
Supplementary figure 1. Relationship between age and probability of hospitalisation (red) and death (blue) in patients with psoriatic arthritis (disease-specific model), estimated by three-knot restricted cubic splines, with 95% confidence intervals.



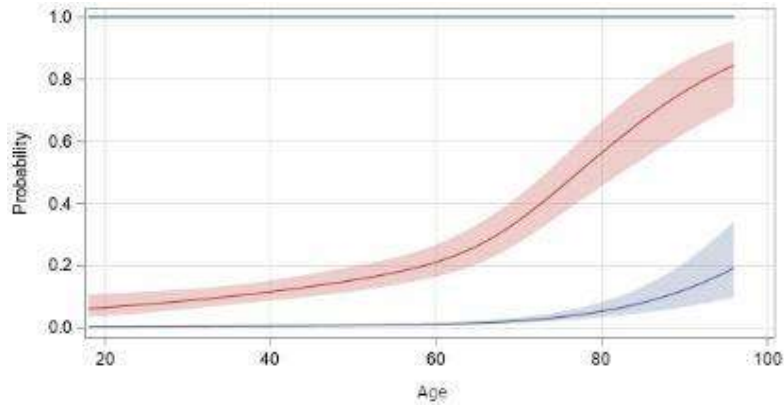
Supplementary figure 2. Relationship between age and probability of hospitalisation (red) and death (blue) in patients with axial spondyloarthritis (disease-specific model), estimated by three-knot restricted cubic splines, with 95% confidence intervals.



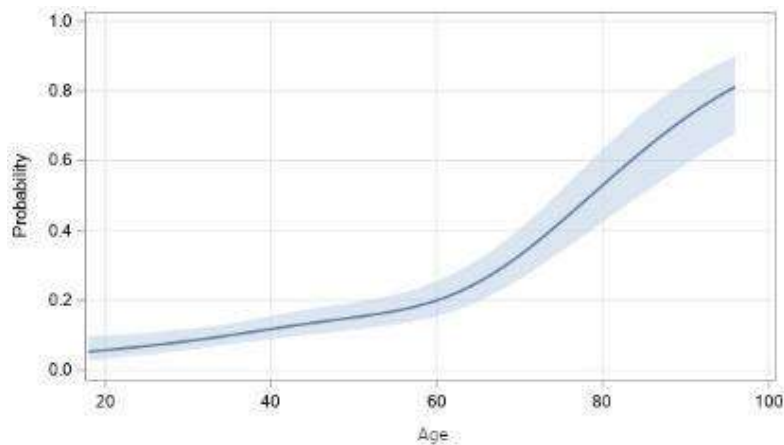
Supplementary figure 3. Relationship between age and probability of hospitalisation (red) and death (blue) in patients with psoriasis without arthritis (disease-specific model), estimated by three-knot restricted cubic splines, with 95% confidence intervals.



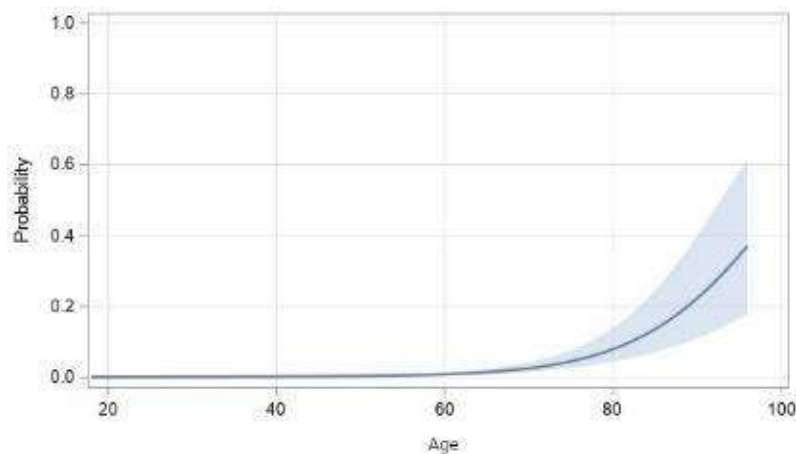
Supplementary figure 4. Relationship between age and probability of hospitalisation (red) and death (blue) estimated by four-knot restricted cubic splines, with 95% confidence intervals, for one imputation stratum (model with confirmed cases only).



Supplementary figure 5. Relationship between age and probability of hospitalisation estimated by four-knot restricted cubic splines, with 95% confidence interval (binary outcome model: hospitalisation).



Supplementary figure 6. Relationship between age and probability of death estimated by three-knot restricted cubic splines, with 95% confidence interval, for one imputation stratum (binary outcome model: death).



SUPPLEMENTARY METHODS

Choice of reference category for medication exposure

Regarding the choice of the reference category for disease-modifying antirheumatic drugs (DMARDs), the most populated categories and therefore possible choices were TNF inhibitors (TNFi), methotrexate, and absence of DMARD therapy. While the TNFi group was the largest group overall, patients receiving TNFi were younger, had less comorbidities, smoked less, took steroids less often, and had better disease control than the overall average, and therefore this group was felt to be inappropriate as a reference group. The proportion of patients receiving methotrexate, on the other hand, was much higher among psoriatic arthritis (PsA) patients compared to patients with axial spondyloarthritis (axSpA) or psoriasis without arthritis (PsO). Moreover, in spondyloarthritis patients with purely axial disease, conventional synthetic DMARDs like methotrexate are ineffective and rarely prescribed. Thus, absence of DMARD therapy was adopted as the medication reference group for DMARDs.

Assumptions of the proportional odds model

In the proportional odds model, the odds ratio for the events “hospitalized or deceased” vs. “neither hospitalized nor deceased” is assumed to be equal to the odds ratio for the events “deceased” vs. “not deceased (hospitalized or not hospitalized)”. This is the odds ratio reported as results for the model. Potential deviations from this assumption were assessed graphically by plotting the stratified means for the levels of the ordinal outcome together with the expected values given that the proportional odds assumption holds,[1] without detecting deviations of concern overall (data not shown).

Statistical interactions

Four two-way interactions were modeled in an additive sense[2]:

1. Between hypertension and cardiovascular disease (CVD): hypertension alone, CVD alone, hypertension combined with CVD; vs. no hypertension and no CVD.
2. Between obesity and diabetes: obesity alone, diabetes alone, obesity combined with diabetes; vs. no obesity and no diabetes.
3. Between smoking status and cancer: cancer and known smoking habits, cancer unknown smoking habits, no cancer and ever smoked or unknown smoking habits; vs. no cancer and never smoked. The interaction between smoking status and cancer was modelled in a non-standard way due to the group of patients

with missing information on smoking habits presenting an OR exceeding the ORs for patients that had never or ever smoked in preliminary analyses, suggesting it was more appropriate to consider it as a separate subgroup within the interaction.

4. Between disease activity and prednisolone-equivalent glucocorticoid (GC) use: remission/low disease activity and GC use, moderate/high disease activity and no GC use, moderate/high disease activity and GC use; vs. remission/low disease activity and no GC use.

Patients excluded and handling of missing data

Patients under the age of 18, patients with missing primary outcome as well as missing values for age, sex, pandemic time period, DMARD exposure, patients treated with more than one biological DMARD, patients treated with DMARDs not typically used or licensed for PsO, PsA or axSpA, PsA (abatacept, B-cell inhibitors, IL-1 and IL-6 inhibitors), and patients diagnosed with multiple inflammatory rheumatic diseases (except for Sjögren's syndrome, and if not receiving B-cell therapies, azathioprine, mycophenolate, ciclosporin, cyclophosphamide or tacrolimus) were excluded from the analysis (529 patients excluded in total).

Further, for some analyses, medications without patients at all or medications with all patients falling into the same outcome category had to be excluded for statistical reasons in some of the secondary and sensitivity analyses (leflunomide, cyclosporine, IL-23 inhibitors, and apremilast, for the analyses focusing on patients with axSpA; antimalarials, leflunomide, sulfasalazine, cyclosporine, JAK inhibitors, and glucocorticoids in the presence of moderate/high disease activity, for the analysis focusing on patients with PsO; antimalarials and cyclosporine, for the analysis using the binary outcome mortality). Missing values for comorbidities, glucocorticoid therapy, disease activity and NSAIDs were derived by multiple imputation using full conditional specification.[3]

References

1. Harrell F. Regression Modeling Strategies: With Applications to Linear Models, Logistic Regression, and Survival Analysis. Chapter 5: Resampling, Validating, and Simplifying the Model. 2001 01/01; 3:88-103.
2. Rothman KJ. Modern epidemiology: Little, Brown & Co, Boston, 1986.
3. van Buuren S. Multiple imputation of discrete and continuous data by fully conditional specification. Stat Methods Med Res 2007;16:219–42.