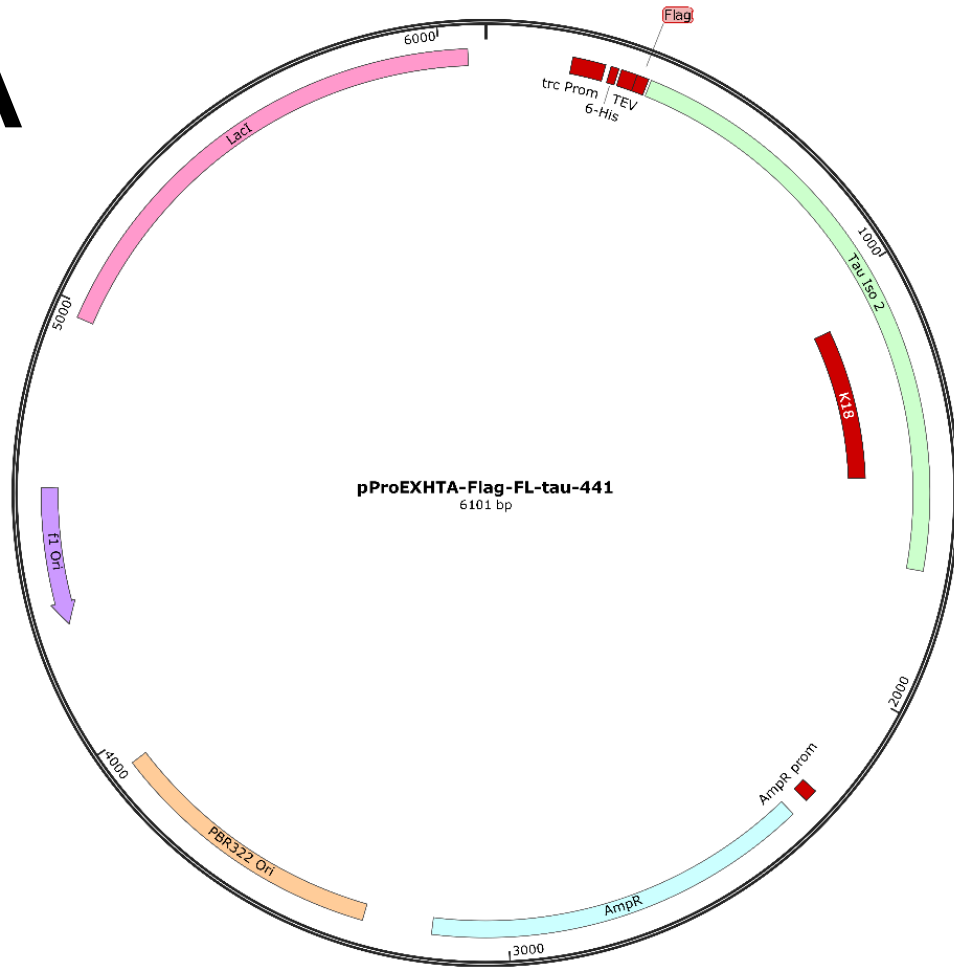
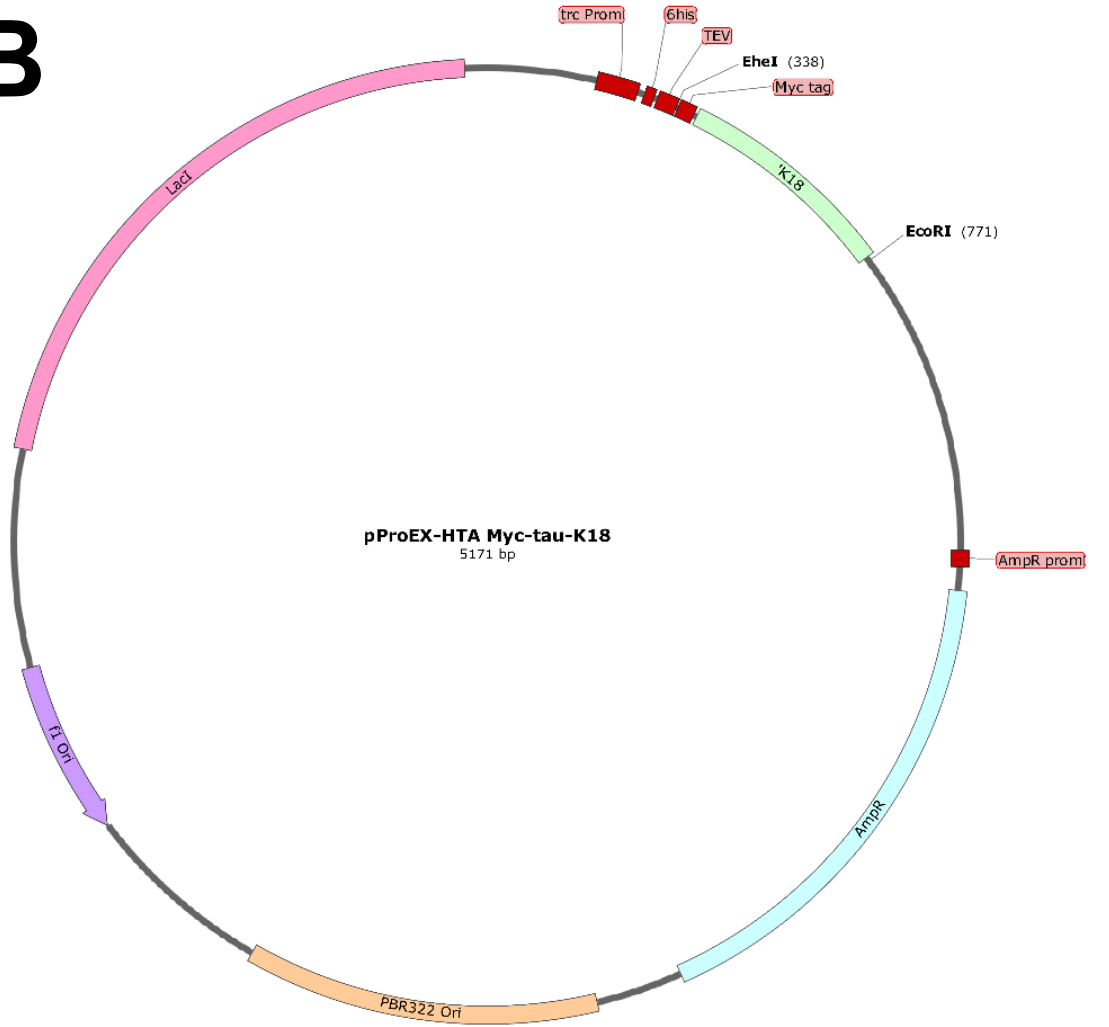


A**B**

Oxidised tau proteins



Add reducing agent (TCEP)



Tau monomers



Add maleimide label



Labelled tau



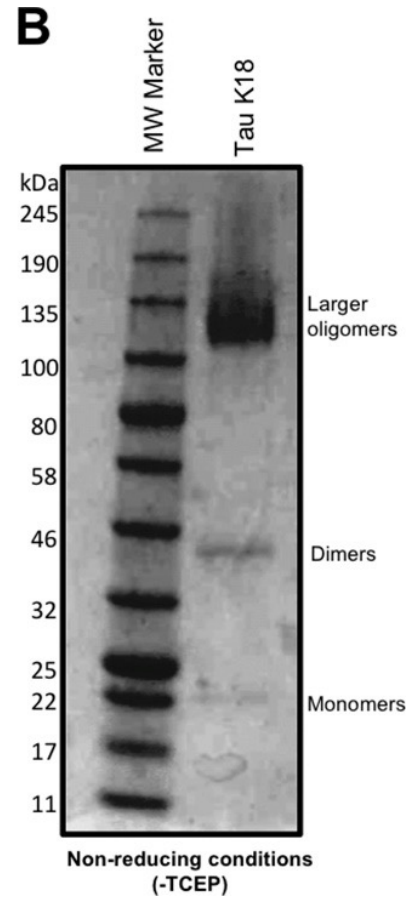
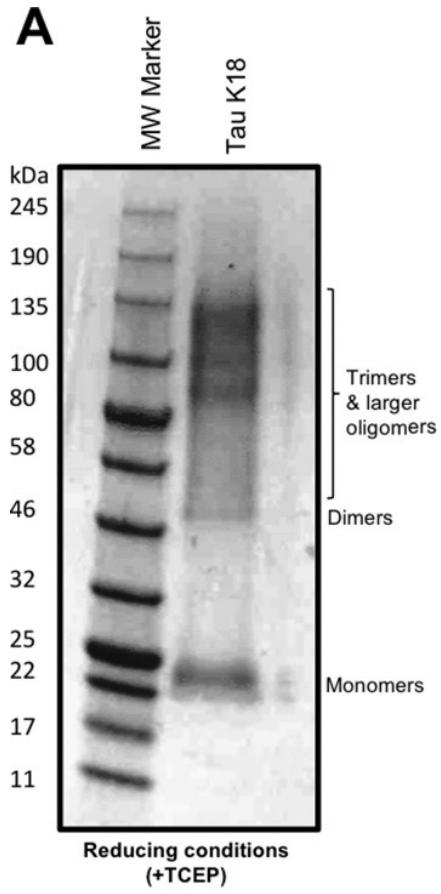
Dialyse out excess flourophore



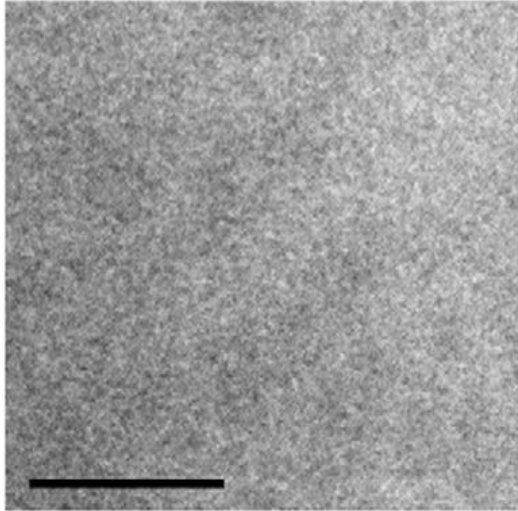
Structurally characterise the oligomer species



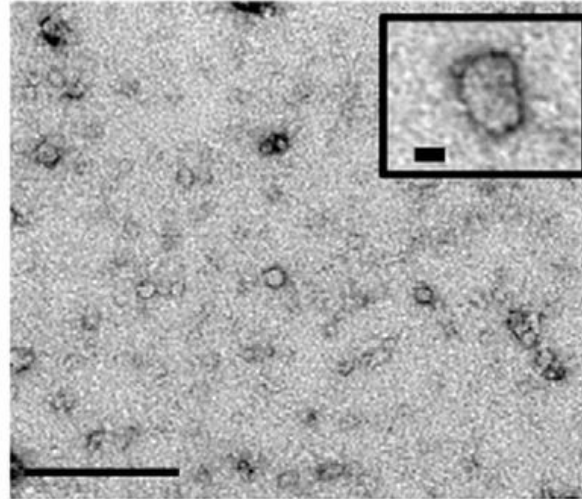
- Gel electrophoresis
- Dot/Western blotting
- Transmission electron microscopy



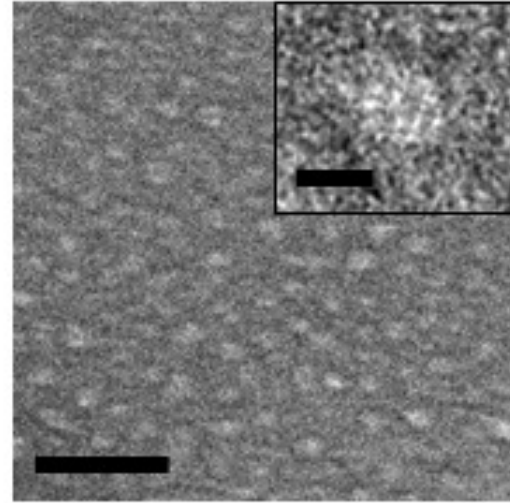
A Buffer control



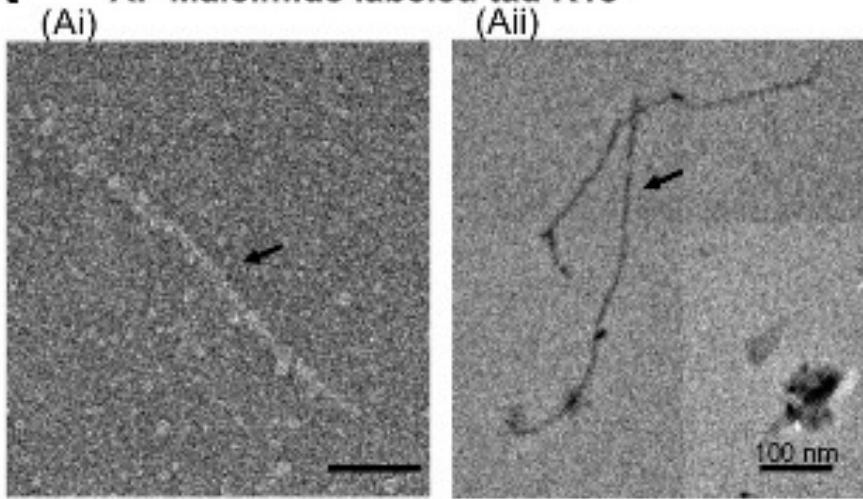
B Full-length tau-441 oligomers



C Tau-K18 oligomers



A AF-Maleimide labeled tau K18



B

Unlabeled tau K18

