



OPEN ACCESS

Original research

# The avoiding late diagnosis of ovarian cancer (ALDO) project; a pilot national surveillance programme for women with pathogenic germline variants in *BRCA1* and *BRCA2*

Sue Philpott ,<sup>1</sup> Maria Raikou,<sup>2,3</sup> Ranjit Manchanda ,<sup>4,5,6</sup> Michelle Lockley ,<sup>7</sup> Naveena Singh ,<sup>8</sup> Malcolm Scott ,<sup>9</sup> D Gareth Evans ,<sup>10,11</sup> Julian Adlard ,<sup>12</sup> Munaza Ahmed,<sup>13</sup> Richard Edmondson,<sup>14</sup> Emma Roisin Woodward ,<sup>10,11</sup> Athena Lamnisis,<sup>15</sup> Janos Balega,<sup>16</sup> Angela F Brady ,<sup>17</sup> Aarti Sharma,<sup>18</sup> Louise Izatt ,<sup>19,20</sup> Anjana Kulkarni,<sup>19</sup> Vishakha Tripathi ,<sup>21</sup> Joyce S Solomons,<sup>22</sup> Kevin Hayes,<sup>23</sup> Helen Hanson ,<sup>24</sup> Katie Snape ,<sup>25,26</sup> Lucy Side,<sup>27</sup> Steve Skates,<sup>28</sup> Alistair McGuire,<sup>29</sup> Adam N Rosenthal ,<sup>9,30</sup>

► Additional supplemental material is published online only. To view, please visit the journal online (<http://dx.doi.org/10.1136/jmg-2022-108741>).

For numbered affiliations see end of article.

## Correspondence to

Adam N Rosenthal,  
Gynaecological Oncology,  
University College London EGA  
Institute for Women's Health  
Department of Women's Cancer,  
London, London, UK;  
[adam.rosenthal@ucl.ac.uk](mailto:adam.rosenthal@ucl.ac.uk)

AM and ANR are joint senior authors.

Received 7 June 2022

Accepted 17 August 2022



© Author(s) (or their employer(s)) 2022. Re-use permitted under CC BY-NC. No commercial re-use. See rights and permissions. Published by BMJ.

**To cite:** Philpott S, Raikou M, Manchanda R, *et al.* *J Med Genet* Epub ahead of print: [please include Day Month Year]. doi:10.1136/jmedgenet-2022-108741

## ABSTRACT

**Background** Our study aimed to establish 'real-world' performance and cost-effectiveness of ovarian cancer (OC) surveillance in women with pathogenic germline *BRCA1/2* variants who defer risk-reducing bilateral salpingo-oophorectomy (RRSO).

**Methods** Our study recruited 875 female *BRCA1/2*-heterozygotes at 13 UK centres and via an online media campaign, with 767 undergoing at least one 4-monthly surveillance test with the Risk of Ovarian Cancer Algorithm (ROCA) test. Surveillance performance was calculated with modelling of occult cancers detected at RRSO. The incremental cost-effectiveness ratio (ICER) was calculated using Markov population cohort simulation.

**Results** Our study identified 8 OCs during 1277 women screen years: 2 occult OCs at RRSO (both stage 1a), and 6 screen-detected; 3 of 6 (50%) were  $\leq$ stage 3a and 5 of 6 (83%) were completely surgically cytoreduced. Modelled sensitivity, specificity, Positive Predictive Value (PPV) and Negative Predictive Value (NPV) for OC were 87.5% (95% CI, 47.3 to 99.7), 99.9% (99.9–100), 75% (34.9–96.8) and 99.9% (99.9–100), respectively. The predicted number of quality-adjusted life years (QALY) gained by surveillance was 0.179 with an ICER cost-saving of -£102,496/QALY.

**Conclusion** OC surveillance for women deferring RRSO in a 'real-world' setting is feasible and demonstrates similar performance to research trials; it down-stages OC, leading to a high complete cytoreduction rate and is cost-saving in the UK National Health Service (NHS) setting. While RRSO remains recommended management, ROCA-based surveillance may be considered for female *BRCA*-heterozygotes who are deferring such surgery.

## INTRODUCTION

Between 9–18% of all epithelial ovarian cancers (OC) occur in women with germline pathogenic variants in *BRCA1/2*.<sup>1–2</sup> This increases to 20% for high-grade serous OC (HGSOC).<sup>3</sup> *BRCA1/2*

## WHAT IS ALREADY KNOWN ON THIS TOPIC

⇒ Not all women with pathogenic germline *BRCA1/BRCA2* alterations are willing to undergo pre-menopausal bilateral salpingo-oophorectomy to prevent ovarian cancer (OC). In clinical trials, OC surveillance using the Risk of Ovarian Cancer Algorithm (ROCA) test in such women results in earlier stage at OC diagnosis and potential clinical benefits compared with no surveillance. It is not known if this approach can succeed in a 'real world' setting or if it is cost-effective.

## WHAT THIS STUDY ADDS

⇒ Surveillance performance was maintained in a 'real world' setting and appeared cost-saving when compared with a policy of no surveillance.

## HOW THIS STUDY MIGHT AFFECT RESEARCH, PRACTICE OR POLICY

⇒ ROCA-based OC surveillance can be considered for women with pathogenic germline *BRCA1/BRCA2* alterations who decline risk-reducing surgery.

variant-carriers have 44% (95% CI, 36% to 53%) and 17% (95% CI, 11% to 25%) lifetime OC risks to age 80 years, respectively.<sup>4</sup> Consequently, they are advised to undergo risk-reducing bilateral salpingo-oophorectomy (RRSO) to prevent OC; from age 35 (*BRCA1*-heterozygotes) or 40 years (*BRCA2*-heterozygotes) onwards.<sup>5</sup>

Between 20–40% of patients with *BRCA1/2*-heterozygotes delay or decline RRSO.<sup>6–8</sup> Up to 35% of women have not undergone RRSO 7 years after receiving their positive *BRCA1/2* gene test result.<sup>8–9</sup> Reasons for delaying/declining RRSO include: ongoing breast cancer treatment, addressing

breast risks first, completing families, waiting until natural menopause, the existence of comorbidities which make RRSO hazardous, fear of surgery, lack of available time, or simply not wanting surgery.<sup>6,10</sup> Delaying/declining surgery leaves these women at risk of OC, so an effective OC surveillance programme would be an important option.

The ROCA test (CE marked and owned by Abcodia Ltd (Cambridge, UK)) is a surveillance test which has been evaluated in high-risk women through prospective trials using an intensive protocol: 4-monthly in a UK trial<sup>11</sup> and 3-monthly in two US trials.<sup>12</sup>

The ROCA test calculates the probability of a woman having epithelial OC or fallopian tube cancer (FTC) using an algorithm which assesses the rate of change of the tumour marker CA125, to triage women into different risk categories. Abnormal ROCA test results prompt early repeat tests ± a transvaginal ultrasound scan (TVS). Surgical intervention is recommended for those with sufficiently elevated ROCA results or concerning scans.

In the UK trial,<sup>11</sup> modelled sensitivity for asymptomatic OC/FTC was 95%. Women diagnosed with OC/FTC during 4-monthly surveillance were significantly more likely to be free of macroscopic metastatic disease outside the pelvis compared with those no longer on surveillance (95% vs 37%, respectively), a lower proportion required neoadjuvant chemotherapy (5% vs 44%, respectively), and a high proportion (95%) had no residual disease post-surgery. In most cases, complete cytoreduction during surveillance in the UK trial required little more than total abdominal hysterectomy, bilateral salpingo-oophorectomy (BSO) and omentectomy, rather than 'ultra-radical' surgery. While it remains speculative that such results translate into improved survival, they suggest that this form of surveillance may be a useful short-term strategy in *BRCA1/2*-heterozygotes who are not yet ready for RRSO.

Based on these encouraging results, the Avoiding Late Diagnosis of Ovarian Cancer (ALDO) pilot national surveillance programme for *BRCA1/2*-heterozygotes deferring/declining RRSO was initiated, with the ultimate objective of establishing a national OC surveillance programme for such women. Specifically, we wanted to establish whether such surveillance maintained high levels of performance in a 'real-world' setting (ie, high sensitivity for asymptomatic disease and earlier stage OC/FTC detection), and whether it was cost-effective.

## MATERIALS AND METHODS

### Recruitment

Women with pathogenic germline *BRCA1/2* variants were identified through 13 Genetics Centres or Familial Cancer Clinics in England and Wales and invited to participate via letter or in clinic. The project was also advertised on online *BRCA*-heterozygotes forums and UK OC charity websites. Recruitment ran from 4 August 2018 to 31 May 2019.

Women were eligible if aged 35–85 years, had a documented pathogenic *BRCA1/2* variant, had not had both ovaries and fallopian tubes removed (women with bilateral salpingectomy only were eligible), and were able to travel to one of the ALDO project hospitals if they required TVS or gynaecological referral. *BRCA* variant reports were requested for all participants.

Those opting to take part, having read the participant information sheet (Supplement), completed, signed and posted consent forms to the coordinating centre (CC) using a postage-paid envelope.

### Surveillance

Participants were scheduled for 4-monthly ROCA tests. The ROCA uses longitudinal serum CA125 results, age, menopausal

status and lifetime risk category to calculate current probability of OC/FTC.<sup>11</sup>

Venepuncture kits were posted to participants for use in primary care. Samples were posted (in Royal Mail approved packaging for biological substances, Category B, UN3373) back to *The Doctors Laboratory* (London, UK) for CA-125 testing.

Menopause status was determined at each blood draw using participants' age and answers to specific gynaecological questions on the blood sample return form (online supplemental table 1, online supplemental figures 1 and 2).

Participants' raw CA-125 data, age and menopausal status were transmitted securely to Abcodia for processing by the ROCA, which was secured within a closed Microsoft Azure (Redmond, Washington, USA) network. Data were transmitted using a unique pseudo-anonymised identifier.

Participants were triaged according to their ROCA results (figure 1); if 'Normal' they continued with 4-monthly surveillance, if 'Mildly Elevated' they had a 6 week repeat test, if 'Moderately Elevated' they also had a TVS, and if 'Significantly Elevated' they were referred to a gynaecologist for clinical assessment (including TVS).

As an additional failsafe, any ROCA test result classified as 'Normal', but where the CA-125 had increased by 50% or was ≥50 U/mL was reviewed by the clinical lead (ANR) who decided whether to repeat the test 6 weeks later or continue with 4-monthly surveillance.

TVSs were organised by participating sites. If a participant was unable to attend a named site, the project team asked their primary care physician to refer them locally. TVSs were classified using the system reported in the UK Familial Ovarian Cancer Screening Study (UKFOCSS).<sup>11</sup>

Routine surveillance ran from 5 October 2018–30 November 2020. Participants with an abnormal ROCA result at their last routine test continued repeat tests as necessary until 30 April 2021. Anyone with an abnormal result was then referred to their primary care physician for CA125 tests, with clinical advice provided by the study team.

The protocol was similar to that used in UKFOCSS,<sup>11</sup> with minor modifications (online supplemental table 2).

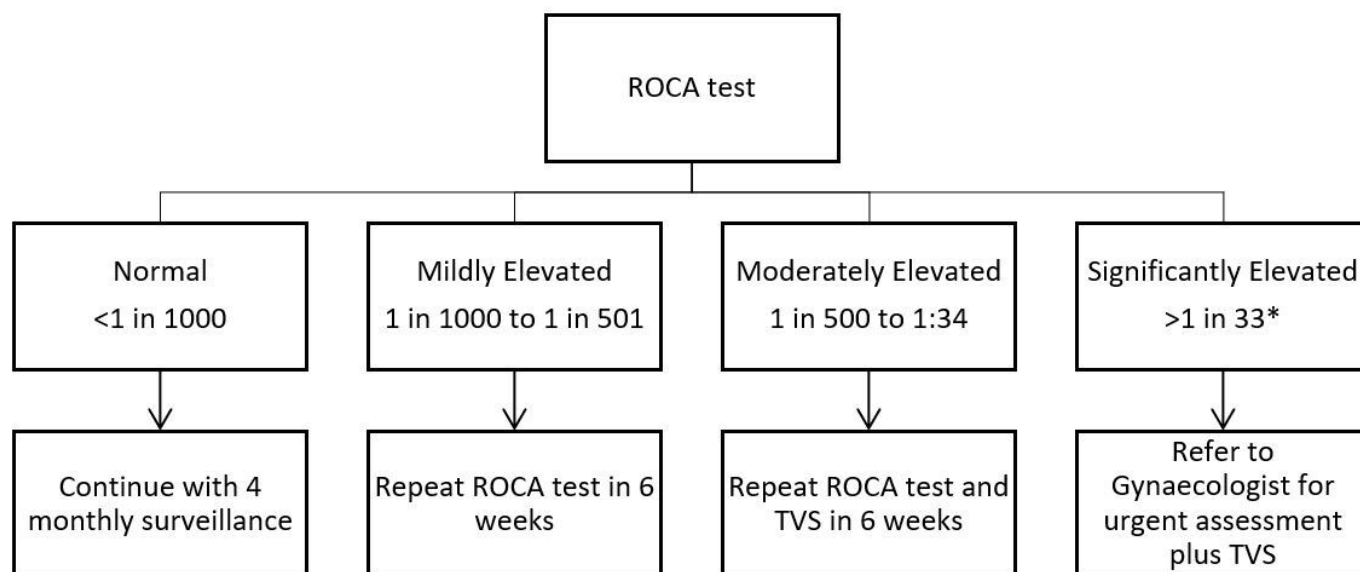
Participants were asked to complete baseline and follow-up questionnaires, asking about their OC surveillance knowledge, prior experience, and their experience of taking part in ALDO. Questionnaire results will be reported in a separate publication.

Surgical documentation (indication, operation notes, histopathology/cytopathology reports) was requested for all women undergoing adnexal surgery. These were reviewed by a consultant gynaecologist (ANR) and gynaecological pathologist (NS) and classified according to the International Statistical Classification of Diseases and Related Health Problems, 10<sup>th</sup> revision, and FIGO (2018) OC staging system. A surgical complexity score was assigned using recognised criteria (online supplemental table 3).<sup>13</sup> *BRCA* status was confirmed through test reports or other documentation as required.

Women were followed up via questionnaires, telephone or email. Where there was no response, we contacted their primary care physician or recruiting centres. Cancers occurring in recruited women who never underwent ALDO surveillance are reported but not included in the surveillance performance analyses.

### COVID-19 impact

Routine surveillance was temporarily suspended on 23 March 2020 when the UK Government announced a nationwide



**Figure 1** Triage of participants according to ROCA result categories. \*NICE (National Institute for Health and Care Excellence) threshold for referral for suspected cancer. ROCA, Risk of Ovarian Cancer Algorithm; TVS, Transvaginal ultrasound scan.

'lockdown' due to the COVID-19 pandemic. Participants were asked to delay routine samples until further notice unless they were due repeat tests due to prior abnormal results. Participants requiring a TVS during this time had their results reviewed by the clinical lead (ANR), with TVS only requested in those with the most concerning ROCA results. Routine surveillance was re-instated from June-August 2020 once local site approval was confirmed.

### Adherence to surveillance

Adherence to surveillance was evaluated by calculating the median number of ROCA tests/participant/year. With 4-monthly surveillance, we would expect  $\geq 3$  tests/participant/year (more if any results were abnormal). As routine surveillance was suspended from 23 March 2020 due to the COVID-19 pandemic, we compared adherence before and after this date.

### Statistical analysis

For participants who completed surveillance, performance analysis data were censored at 4 months after the last test. For participants who withdrew before the end of the project or died, data were censored at date of withdrawal or death, providing it occurred within 4 months of their final test. Women screen years (WSYs) were calculated from date of first test to censor date. Statistical analysis was conducted using R, version 4.0.2<sup>14</sup> and IBM SPSS Statistics version 25 (Armonk, NY). Sensitivity and Positive Predictive Value (PPV) were analysed on a per case basis to assess the performance of the entire surveillance pathway from testing to decision to operate to exclude OC/FTC. Specificity and Negative Predictive Value (NPV) were analysed on a per WSY basis. This is more conservative than analysing on a per test basis and provides data on the degree of reassurance 1 year's negative test results provide. In addition, we conservatively included time from the penultimate rather than final ROCA test when calculating false negative (FN) WSYs for occult cancers.

As in UKFOCSS,<sup>11</sup> in order to estimate true sensitivity, we assumed the proportion of occult cancers identified at RRSO which would have been screen-detected had women not undergone surgery would be identical to that observed in those who

continued surveillance. We then used the lower CI of observed sensitivity in women who did not undergo RRSO as a conservative estimate of occult cancer detection sensitivity and rounded the predicted number of occult cancers detected to the nearest integer.

Women who underwent BSO had their surgery classified as follows: 'RRSO' if their last ROCA test was normal and they were asymptomatic; True-positive if they had abnormal results which prompted surgery to exclude OC/FTC and were subsequently diagnosed with invasive epithelial OC/FTC; False-positive if they had abnormal results which prompted surgery to exclude OC/FTC and were not diagnosed with invasive epithelial OC/FTC; and 'surveillance-related' if they had non-concerning (eg, transiently abnormal) ROCA test results which contributed to their decision to have surgery.

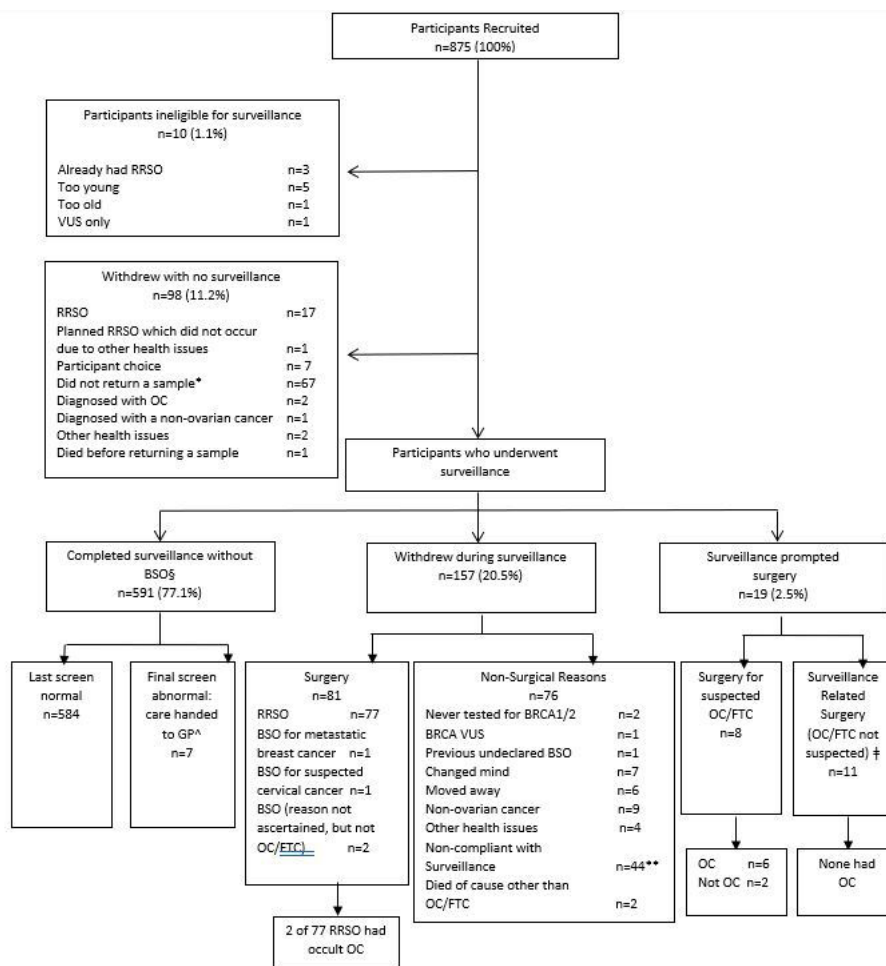
Prevalent OC cases were those diagnosed at the first surveillance test. Incident cases were those diagnosed subsequently. To allocate WSYs to the correct outcomes we applied the following rules: for true-positive and false-positive detection screens, the WSYs commenced with the date of the first surveillance test that led to referral and ended on the date of subsequent OC or non-OC diagnosis. WSYs prior to this were True Negative (TN). For occult cancers, we classified the WSYs commencing with the penultimate test before their RRSO as False Negative (FN). WSYs prior to this were TN. For TN cases, all WSYs were classified as TN.

### Combined analysis of ROCA-based surveillance trials

To establish the overall down-staging observed with high-intensity ROCA-based surveillance in *BRCA*-heterozygotes, we analysed published individual OC patient data from the previous ROCA surveillance trials,<sup>11 12</sup> combined with data from the present study, and compared OC stages with those in the *BRCA*-heterozygotes no longer on surveillance in UKFOCSS.<sup>11</sup>

### Economic analysis

An incremental cost-effectiveness analysis of the surveillance was performed and compared with a no-surveillance (control) arm. We developed a Markov population cohort, based on a



**Figure 2** Consort diagram showing flow of participants through the surveillance programme. Percentages refer to the proportion of the total in preceding boxes. \*Reasons for not returning sample in online supplemental table 5. §Includes four participants who had bilateral salpingectomies as part of the PROTECTOR trial (<http://protector.org.uk/>).<sup>23</sup> ^Five were normal on repeat testing, 1 was referred for additional repeat testing which returned to normal, 1 was referred for further investigations which did not show anything abnormal. \*\*26/44 have not had RRSO or OC, 18/44 lost to follow-up. ‡Includes a participant who underwent bilateral salpingectomy only on the protector trial. RRSO, risk-reducing bilateral salpingo-oophorectomy; VUS, variant of uncertain significance; OC, ovarian cancer; FTC, fallopian tube cancer; BSO, bilateral salpingo-oophorectomy; GP, general practitioner (primary care physician).

hypothetical cohort of 1000 *BRCA1/2*-heterozygotes who were offered surveillance starting at age 35, and modelled out over their lifetime. Analysis was based on our previous trial<sup>11</sup> and individual patient level data collected during ALDO for the surveillance arm, and from relevant literature to populate the control arm. Control women were assumed to have the choice of undertaking RRSO, or they remained disease-free, or they developed OC and entered associated therapy. The model simulation followed women from the point they undergo a gene test identifying their *BRCA* status, until death from OC or a competing risk, using annual cycles, which progress through a number of health states (online supplemental figure 3). The cost-effectiveness perspective adopted was the UK National Health Service (NHS).

The effectiveness measures used were life years (LYs) gained and quality adjusted life years (QALYs) gained. These are based on extrapolations of OC/FTC detection in the surveillance arm and OC/FTC development in the control arm, taking into account the choice to undergo RRSO in both arms. The extrapolations were made, in the normal Markov cohort manner, through allocating transition probabilities to the population to move them through the various health states. In any given

year (model cycle) a woman can decline, defer or opt for RRSO. Details of the assumptions and data used to populate the effectiveness within the model are in the online supplemental file, pages 16-21.

Only direct NHS costs covering the surveillance and control populations, and subsequent treatment costs were analysed. Resource usage was based on identification of surveillance visits, blood tests, clinic visits, surgery and follow-up clinical assessment. In addition, OC chemotherapy agents and number of cycles were based on guidance from the National Institute for Health and Care Excellence (NICE).<sup>15</sup> All surveillance and treatments, including the use of poly-ADP ribose polymerase inhibitor (PARPi) maintenance therapy for OC/FTC, were recorded within NHS settings.

The ROCA test is currently not available in the NHS. The estimate used was the current list price of £150 per ROCA test.<sup>16</sup> This estimate was used in the base-case analysis and subjected to sensitivity analysis to account for uncertainty surrounding this estimated value. Sensitivity analyses were also used to consider the surveillance programme ending at various ages, and detecting varying proportions of early-stage (stage 1 and 2) OC.



**Table 1** Characteristics of the eligible participants on surveillance.

	All n=764	BRCA1 n=339	BRCA2 n=410	BRCA1&2 n=6	BRCA variant unknown* n=9
Median age at recruitment	40.0	39.4	40.8	44.8	36.5
Years (range)	(34.5–83.3)	(35.4–81.4)	(35.1–83.3)	(36.1–63.4)	(35.2–40.1)
Number Premenopausal (%)	590 (77.2%)	269 (79.4%)	306 (74.6%)	3 (50%)	9 (100%)

\*Unable to obtain medical report stating which *BRCA* variant they had.

## RESULTS

Between 5 August 2018 and 30 April 2019, 875 women returned a signed consent form. 819 (93.6%) were recruited via local genetics and familial cancer clinics and 56 (6.4%) via the online media campaign. 10 (1.1%) of the 875 women were withdrawn as ineligible, 31 (3.5%) withdrew themselves before having their first ROCA test and 67 (7.7%) were withdrawn as no blood sample was ever received (figure 2). Our analysis was on the remaining 767 women with at least one test. The median recruitment age was 40 years (range 34.5–83.3 years) (table 1). *BRCA* variant status was confirmed in 755 (99%) women; 339 (44.7%) *BRCA1*, 410 (54.1%) *BRCA2*, and 6 (0.8%) both *BRCA1* and *BRCA2*. 590 women (77.2%) were pre-menopausal.

## ROCA surveillance

Participants underwent 1277 WSYs (median 1.9 WSYs/woman, range 0.04–2.72 WSYs). The flow of the participants through the surveillance programme is shown in figure 2. Of the 3789 blood samples returned, 85.5% were routine, 12.4% were repeat due to an abnormal ROCA result, 1.8% were failsafe repeats (where the ROCA test was normal, but the CA125 had increased by  $\geq 50\%$  or was  $\geq 50$  u/mL), and 0.3% were discarded as the sample either arrived too late, was of insufficient quantity, or was returned in an incorrect blood tube. Outcomes of women undergoing failsafe repeat testing are shown in online supplemental figure 4.

Outcomes of women undergoing TVS are shown in online supplemental figure 5; 114 TVSs were requested in 104 women (14%). One participant was diagnosed with a non-ovarian cancer. Two of the TVSs were abnormal; one prevalent FTC (Stage 3c) and one incident OC (Stage 3b).

We referred 22 (2.8%) participants to a gynaecologist for clinical assessment, 8 underwent screen-positive surgery, 9 returned to routine surveillance, 3 were diagnosed with non-ovarian cancer (two metastatic breast cancer; one pancreatic cancer), 1 was referred to her primary care physician for a repeat CA-125 (which was normal) as surveillance had ended and 1 was placed on the waiting list for BSO (investigations were not concerning and surveillance had ended).

Overall, 3772 eligible samples were returned during 1277 WSYs (median 2.95 samples/participant/year). A total of 91.8% of requested samples were returned; 92.8% before the first UK COVID-19 lockdown, 83.2% subsequently. 2929 samples were taken during 841 WSYs (median 3.5 samples/participant/year) pre-lockdown, 843 samples were taken during 436 WSYs (median 1.9 samples/participant/year) subsequently; a reduction of 54%. Reasons for non-compliance are shown in online supplemental table 5. We found 590 (15.6%) ROCA samples were abnormal.

Overall, 19 of 767 women (2.5%) underwent surveillance-prompted surgery; 6 were screen-detected OC/FTCs (3 incident and three prevalent), 2 underwent false-positive surgery, and 11 had surveillance-related surgery (BSO or salpingectomy) which may have been due to transiently high non-concerning abnormal

ROCA results. Of the 2 false-positive surgeries, 1 had bilateral functional cysts and 1 had endometriosis.

Eight participants were diagnosed with OC/FTCs (table 2). Six were screen-detected (3 prevalent, 3 incident) and 2 were occult cancers. Additionally, 2 women who consented to take part but did not undergo surveillance developed OC/FTC (1 was diagnosed at RRSO, and 1 presented clinically). The median age at OC/FTC diagnosis was 42.5 years (range 37–60). Both occult cancers were stage 1a; 3 of the 6 (50%) screen-detected OCs were  $\leq$ stage 3a and 5 of the 6 (83%) were completely surgically cytoreduced. Three of the 6 (50%) had a CA125  $< 30$  U/mL when first identified as abnormal by the ROCA, and 4 of the 6 (67%) had a normal TVS prior to diagnosis. OC surgery was performed within a median of 30 days (range 21–43) of referral.

All 6 OCs/FTCs (100%) in women on surveillance and who did not undergo RRSO were screen-detected (95% CI 54.1% to 100%). Hence, for modelled sensitivity, the lower confidence limit of 54.1% was used to conservatively estimate the proportion of occult cancers which would have been screen-detected had women not undergone RRSO.

Modelled sensitivity, specificity, PPV, and NPV for the detection of OC/FTC at 4 months after the last surveillance test were 87.5% (95% CI, 47.3% to 99.7%), 99.9% (95% CI 99.9 to 100%), 75% (95% CI, 34.9% to 96.8%), and 99.9% (95% CI, 99.9% to 100%), respectively.

## Combined analysis of ROCA-based high-risk surveillance trials

Figure 3 compares the stages at which OCs were detected (in *BRCA*-heterozygotes only) across this and previous ROCA-based surveillance trials, and compares them to the women diagnosed more than 1 year after their last screen on UKFOCSS.<sup>11</sup> This shows a significant reduction in the stage at diagnosis of incident screen-detected cases with 47% being  $\leq$ stage 3a ( $p = < 0.05$ ).

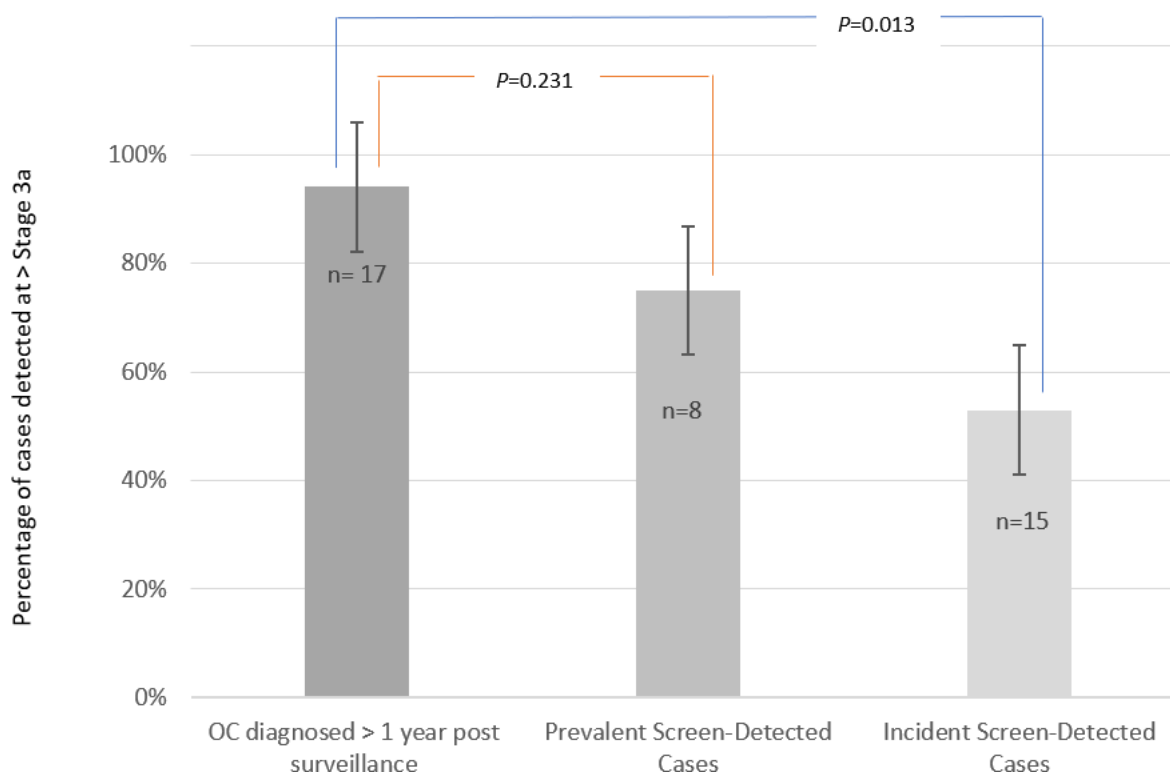
## Economic results

The lifetime cost for a patient in the control arm is calculated at £220 677 compared with £202 337 in the surveillance arm (table 3). The Markov model estimated the number of LYs gained by the surveillance programme were 0.046; QALYs gained were 0.179. Consequently, the ROCA surveillance arm provides a health benefit at lower cost and is cost-saving for the base-case analysis; the ICER is estimated to be £102 496 saved per QALY gained.

We performed various univariate sensitivity analyses. First, we established a threshold ROCA price where the ROCA surveillance arm would no longer be considered cost-saving. This threshold price was established at £585, making the ICER for the ROCA surveillance arm £987 per QALY, which is still highly cost-effective, given current NHS England guidance.<sup>17</sup> Similarly, if surveillance was stopped at age 70, 75 or 80 years it remained cost-saving. In addition, surveillance remained cost-saving at any proportion of early-stage (stage 1 and 2) OC detection  $> 11.5\%$ .

**Table 2** Invasive ovarian and tubal cancers that occurred during surveillance.

BRCA Variant	Age range at diagnosis (yr)	Cancer site and histotype	FIGO stage, grade	CA125 at start of abnormal episode / at time of surgery in occult cases (U/ml)	ROCA score at start of abnormal episode / at time of surgery in occult cases	Transvaginal ultrasound scan result	Interval between abnormal ROCA test and surgery (days)	Interval between last ALDO screen and diagnosis (screen negative cases only) (days)	Extent of cytoreduction	Surgical complexity score*
<b>Prevalent screen-detected cancers (n=3)</b> For these cases, ultrasound scan result is at time of referral.										
BRCA2	50–54	C57 Serous	2a, high grade	20.6	1:589	Normal	40	NA	Complete	2
BRCA2	60–64	C56 Serous	3a1, high grade	133.0	1:13	Normal	28	NA	Complete	4
BRCA1	45–49	C57 Serous	3c, high grade	75.6	1:187	Abnormal	71	NA	Incomplete (<1 cm deposits on rectum and bladder)	5
<b>Incident screen-detected cancers (n=3)</b> For these cases, ultrasound scan result is at time of referral.										
BRCA1	40–44	C57 serous	1a, high grade	26.5	1:495	Normal	30	NA	Complete	4
BRCA1	35–39	C56 Serous	3b, high grade	76.7	1:33	Abnormal	37	NA	Complete	5
BRCA1	55–59	C56 Serous	4b, high grade	9.1	1:463	Normal	43	NA	Complete	7
<b>Occult cancers diagnosed within 365 days of prior screen (n=2)</b> For these cases, ultrasound scan result pre-RRSO is by definition normal.										
BRCA1	40–44	C57 Serous	1a, high grade	16.0	1:2509	Normal	N/A	39	Complete	4
BRCA1	40–44	C57 Serous	1a, high grade	6.2	1:5324	Normal	N/A	6	Complete	4
<b>Cancers diagnosed in participants with no surveillance (n=2)</b>										
BRCA2	40–44	C56 Serous	3c, high grade	N/A	N/A	Normal	N/A	N/A	Incomplete (deposits on hemi diaphragm and omentum)	≥2†
BRCA2	40–44	C56 Serous	3c, high grade	N/A	N/A	CT scan only: Abnormal	N/A	N/A	Complete	8
None of the participants diagnosed with invasive ovarian or tubal cancer had a prior salpingectomy.										
C56 ovarian cancer (excluding borderline ovarian tumours in this table).										
C57 fallopian tube cancer.										
*Surgical complexity score according to Aletti <i>et al.</i> <sup>13</sup> : 1–3 low, 4–7 intermediate, >7 high.										
†Participant had laparoscopic assisted vaginal hysterectomy and BSO with omental and peritoneal biopsies followed by chemotherapy. Further clinical information not available.										
ALDO, Avoiding Late Diagnosis of Ovarian Cancer; BSO, Bilateral Salpingo-oophorectomy; FIGO, International Federation of Gynecology and Obstetrics; N/A, not applicable; ROCA, Risk of Ovarian Cancer Algorithm.										



**Figure 3** Proportion of ovarian cancer (OC) detection at >stage 3a in *BRCA*-carriers among women in ALDO, UKFOCSS<sup>11</sup> and the US<sup>12</sup> ROCA-based surveillance trials combined, compared with women in UKFOCSS diagnosed >1 year post-surveillance. Error bars denote 95% confidence intervals. OC, ovarian cancer.

## DISCUSSION

The ALDO project has demonstrated that OC surveillance using the ROCA test for women who defer or decline RRSO in a ‘real-world’ setting has similar performance as in research trials. It has high sensitivity for asymptomatic OC and can detect early-stage disease with resultant clinical benefit. Additionally, the economic analysis has shown this surveillance is cost-saving in the UK NHS setting.

The relatively short surveillance period on ALDO meant that half of the OCs were prevalent rather than incident. This limits the ability to down-stage OC, as prevalent cancers by definition have abnormal ROCA results at their first test; had they undergone surveillance earlier, they might have had abnormal tests before this, prompting greater down-staging. Despite this, 50% of all screen-detected and 33% of incident cancers were diagnosed at ≤stage 3a; similar to the proportion of all *BRCA*-associated OCs detected in UKFOCSS (33.3%)<sup>11</sup> and the US trials (37.5%),<sup>12</sup> and far exceeding the proportion of the cancers detected more than a year after surveillance ended on UKFOCSS (5.9%).<sup>11</sup> As expected, this down-staging resulted in a high complete cytoreduction rate at primary surgery despite generally modest levels of surgical effort being required and no patients needing neoadjuvant chemotherapy. This is in keeping with the results of UKFOCSS<sup>11</sup> and the US ROCA trials.<sup>12</sup>

The short 30-day median referral to OC surgery interval was substantially better than that seen in UKFOCSS (82 days).<sup>11</sup> This likely reflects a combination of rigorous clinical governance by the

CC and a better understanding among clinicians and participants of the significance of abnormal ROCA results even with a CA125 <30 U/mL and a normal TVS; 50% of the screen-detected OCs had a CA125 <30 U/mL when first flagged abnormal by the ROCA, and 67% had a normal TVS. Additionally, 1 of 6 surveillance-detected cancers had their first repeat test brought forward by a few weeks as a result of the rigorous failsafe procedures, emphasising their utility. Unlike in clinically-detected OC, none of the cases in ALDO or the high-risk ROCA trials presented to the Emergency Room as a first OC presentation while on surveillance. We also observed high adherence to surveillance in this real-world setting, despite the impact of the COVID-19 pandemic, emphasising women’s desire for the service.

Limitations of this project include the relatively small number of cancers occurring, as would be expected on this short duration pilot implementation programme. However, the proportion of stage 1 and 2 OCs in ALDO (33%) was similar to that observed in UKFOCSS<sup>11</sup> (33%) and the US<sup>12</sup> (37.5%) ROCA trials, suggesting a consistent down-staging effect likely to be replicated in larger/longer programmes. In addition, due to financial and logistical constraints, we were not able to conduct long-term follow-up or cancer registry flagging. However, given that in UKFOCSS<sup>11</sup> no interval OCs occurred nor presented clinically within a year of surveillance ending, it is unlikely in the smaller ALDO study that we would have observed any such cases had follow-up continued for longer.

**Table 3** Cost-effectiveness analysis results.

	Cost	QALYs	Cost difference	QALY difference	ICER
<b>Base-case analysis</b>					
<b>ROCA price = £150</b>					
Control	£220 677	31.4291			
Surveillance	£202 337	31.6641	-£18 340	0.179	-£102 496
<b>Sensitivity analyses</b>					
<b>Impact of ROCA price</b>					
Threshold analysis ROCA price = £585					
Control	£220 677	31.4291			
Surveillance	£220 854	31.6641	£177	0.179	£987
<b>Impact of surveillance duration</b>					
Surveillance stops at age 80 years					
Control	£220 677	31.4291			
Surveillance	£201 968	31.6069	-£18 709	0.178	-£104 854
Surveillance stops at age 75 years					
Control	£220 677	31.4291			
Surveillance	£201 768	31.6069	-£18 910	0.178	-£106 326
Surveillance stops at age 70 years					
Control	£220 677	31.4291			
Surveillance	£201 583	31.6059	-£19 095	0.177	-£107 951
Surveillance stops at age 50 years					
Control	£220 677	31.4291			
Surveillance	£209 063	31.5759	-£11 614	0.147	-£79 086
<b>Impact of proportion of early-stage (stages 1 and 2) ovarian cancer detection in ALDO</b>					
Probability of early cancer detection reduced by 10% from 33% base-case to 22%					
Control	£220 677	31.4291			
Surveillance	£210 797	31.5744	-£9880	0.145	-£67 976
Probability of early cancer detection increased by 10% from 33% base-case to 43%					
Control	£220 677	31.4291			
Surveillance	£193 877	31.6416	-£26 800	0.213	-£126 106
Probability of early cancer detection set at 11.5% (vs 33.3% at base-case)					
Control	£220 677	31.4291			
Surveillance	£220 780	31.5348	£103	0.106	£971

ALDO, Avoiding Late Diagnosis of Ovarian Cancer; ICER, incremental cost-effectiveness ratio; QALY, quality-adjusted life year; ROCA, Risk of Ovarian Cancer Algorithm.

As with UKFOCSS, ALDO was not a randomised study and therefore was not able to assess the impact on survival. A recent prospective study<sup>18</sup> looking at survival according to mode of OC detection in *BRCA1* carriers found poor OC-specific 10-year survival (29.7%) in those detected by ultrasound surveillance. However, this study did not use the ROCA test, and ultrasound has not been found to downstage OC in the general population.<sup>19</sup> The performance of annual ROCA tests for OC screening in the general population aged  $\geq 50$  years was reported in the UK Collaborative Trial of Ovarian Cancer Screening (UKCTOCS).<sup>19</sup> Disappointingly, there was no reduction in mortality in this large randomised controlled trial, despite significant down-staging. However, these findings should not be a reason to deny women with a germline pathogenic *BRCA1/2* variant ROCA-based surveillance. The inclusion criteria for UKCTOCS meant that very few participants would have inadvertently been *BRCA*-heterozygotes. In addition, the proportion of OCs which were HGSOc was lower in UKCTOCS (66.3% vs 100% in ALDO). Women with a germline *BRCA* variant have been shown to have a better 5-year survival from HGSOc compared with sporadic HGSOc,<sup>20, 21</sup> indicating inherent biological differences between these groups.

Finally, UKCTOCS utilised annual screening, whereas ALDO and the high-risk OC trials all used intensive (three or 4-monthly) surveillance, which would be expected to generate a greater down-staging effect in a fast-growing tumour such as HGSOc. For all the above reasons, directly extrapolating the UKCTOCS results to a high-risk population is difficult. However, lack of randomisation precludes assessment of potential survival benefit in the high-risk studies.<sup>11, 12</sup>

We have shown that ROCA-based surveillance is cost-effective based on the NICE threshold for a screening programme (£20k/QALY), and is cost-saving in the UK NHS setting. This remains true with various sensitivity analyses, and if the ROCA test price is increased up to £585. Our Markov model is based on extensive use of the literature to construct a comparable control population and is thus open to obvious limitations. As such, the cost-effectiveness results, while relatively robust, need to be considered indicative rather than authoritative. In addition, if future OC treatment trials demonstrate a benefit for PARPi for early-stage disease, this could impact the cost-effectiveness.

There are a number of ongoing trials<sup>22–25</sup> looking at risk-reducing salpingectomy with delayed oophorectomy as a less morbid way to prevent OC. However, the safety and efficacy of this approach has yet to be determined. Even if it demonstrates a high level of protection, it may be reasonable to consider providing post-salpingectomy surveillance until such time as completion bilateral oophorectomy has been performed.

Given that 4-monthly surveillance appears to consistently down-stage OC, is associated with a high surgical cytoreduction rate at relatively low levels of surgical complexity, and reduces the need for neoadjuvant chemotherapy, we feel that this form of surveillance can be offered to *BRCA*-heterozygotes aged  $\geq 35$  years following informed consent, until they are prepared to undergo RRSO. Such surveillance should be viewed strictly as a short-term option only, as unlike RRSO it cannot prevent OC; women undergoing such surveillance should be counselled extensively about its limitations, and that delaying RRSO indefinitely could result in diagnosis with an incurable OC.

#### Author affiliations

<sup>1</sup>North Central London Cancer Alliance, University College London Hospitals NHS Foundation Trust, London, UK

<sup>2</sup>Department of Economics, University of Piraeus, Athens, Greece

<sup>3</sup>Health Economics, The London School of Economics and Political Science, London, UK

<sup>4</sup>Department of Gynaecological Oncology, Barts Health NHS Trust, London, UK

<sup>5</sup>London School of Hygiene and Tropical Medicine, London, UK

<sup>6</sup>Wolfson Institute of Population Health Medicine, Barts CRUK Cancer Centre, Queen Mary University of London, London, UK

<sup>7</sup>Centre for Cancer genomics and Computational Biology, Barts Cancer Institute, Queen Mary University of London, London, UK

<sup>8</sup>Department of Cellular Pathology, Barts Health NHS Trust, London, UK

<sup>9</sup>Familial Cancer Clinic, Department of Gynaecology, University College London Hospitals NHS Foundation Trust, London, UK

<sup>10</sup>Division of Evolution and Genomic Medicine, School of Biological Sciences, Faculty of Biology, Medicine and Health, The University of Manchester, Manchester, UK

<sup>11</sup>Manchester Centre for Genomic Medicine, St Mary's Hospital, Manchester University NHS Foundation Trust, Manchester, UK

<sup>12</sup>Yorkshire Regional Genetics Service, Chapel Allerton Hospital, Leeds, UK

<sup>13</sup>North East Thames Regional Genetics Service, Great Ormond Street Hospital for Children, London, UK

<sup>14</sup>Division of Cancer Sciences, Faculty of Biology, Medicine and Health, St Mary's Hospital, University of Manchester, Manchester, UK, Manchester University NHS Foundation Trust, Manchester, UK

<sup>15</sup>The Eve Appeal, London, UK

<sup>16</sup>Birmingham City Hospital, Birmingham, UK

<sup>17</sup>North West Thames Regional Genetics Service, London North West University Healthcare NHS Trust, Harrow, London, UK

<sup>18</sup>University Hospital of Wales Healthcare NHS Trust, Heath Park, Cardiff, UK

<sup>19</sup>Clinical Genetics, Guy's and St Thomas' NHS Foundation Trust, London, UK



<sup>20</sup>Medical and Molecular Genetics, King's College London Faculty of Life Sciences and Medicine, London, UK

<sup>21</sup>Department of Clinical Genetics, Guy's and St Thomas' Hospitals NHS Trust, London, UK

<sup>22</sup>Oxford Centre for Genomic Medicine (OXGeM), Oxford University Hospitals NHS Trust, Oxford, UK

<sup>23</sup>St George's University Hospitals NHS Foundation Trust, London, UK

<sup>24</sup>23 Clinical Genetics, St George's University Hospitals NHS Foundation Trust, London, UK

<sup>25</sup>Clinical Genetics, St George's University Hospitals NHS Foundation Trust, London, UK

<sup>26</sup>IMBE, University of London St George's, London, UK

<sup>27</sup>25, Wessex Clinical Genetics Service, University Hospitals Southampton, Southampton, UK

<sup>28</sup>Massachusetts General Hospital, Boston, Massachusetts, USA

<sup>29</sup>Health Economics, The London School of Economics and Political Science, London, UK

<sup>30</sup>Gynaecological Oncology, University College London EGA Institute for Women's Health Department of Women's Cancer, London, UK

**Twitter** Ranjit Manchanda @ProfManchanda, Emma Roisin Woodward @ER\_Woodward, Vishakha Tripathi @VishTrip\_11, Joyce S Solomons @joysums, Helen Hanson @Helen\_Hanson1 and Katie Snape @genetikos

**Acknowledgements** We thank the participants without whom the project would not have been possible. We thank the lead clinicians at collaborating centres and their teams for identifying potential participants, sending out invitation letters, providing ultrasound services and seeing participants in clinic when required. We thank the NHS North Central London (NCL) Cancer Alliance for their continued support and encouragement throughout the project (Nasa Turabi, Emily Collins, Mairead Lyons, Helga Laszlo and Donna Chung). We thank members of the project steering committee (Usha Menon, Nasa Turabi, Jodie Moffat (Cancer Research UK), Caroline Prescho (Patient representative), Gareth Evans, Richard Edmondson, Emma Woodward, Julie Barnes and Athena Lamnisis). We also thank the charities who publicised the project to potential participants (Cancer Research UK, The Eve Appeal, Target Ovarian Cancer, Ovarian Cancer Action, Ovacom and BRCA Umbrella). Adam Rosenthal was supported by the NIHR Biomedical Research Centre at University College London Hospitals National Health Service Foundation Trust and University College London.

**Contributors** ANR, SP, AM, SS, MR and NS were involved in the conception and/or design of the project and SP curated the data. ANR, SS, SP, MR and AM undertook the formal data analysis. All authors contributed to the interpretation of the results. SP, ANR, MR, AM and ML drafted the manuscript. All authors critically revised the manuscript. ANR is responsible for the overall content as guarantor.

**Funding** This project was funded by Abcodia Ltd and North Central London Cancer Alliance.

**Competing interests** The project was co-funded by Abcodia Ltd and North Central London Cancer Alliance. Abcodia Ltd had no role in the design of the project, nor in the interpretation of the findings or the drafting/editing of the manuscript. Sue Philpott has previously held a consulting role with Abcodia Ltd. Adam Rosenthal has previously held a consulting role with Abcodia Ltd and Everything Genetic Ltd. Ranjit Manchanda has received funding from Yorkshire Cancer Research, GSK, Eve Appeal, Cancer Research UK, NHS Innovation Accelerator (NIA), Barts & the London Charity, Rose Trees Trust outside this work for research related to genetic testing and honorarium for advisory board membership or lectures from AstraZeneca/MSD/GSK/ EGL. Naveena Singh has served on advisory boards for Astra-Zeneca-MSD and Glaxo SmithKline. Gareth Evans has a consultancy role with AstraZeneca. Helen Hanson has served on advisory boards for AstraZeneca. Steve Skates works at Massachusetts General Hospital which has co-licensed the software for early detection of ovarian cancer to Abcodia and has served on clinical advisory boards for Guardant Health and LUNGEVITY, has collaborated on early detection research with Freenome, participates in the Independent Data Monitoring Committee for GRAIL and has stock option for serving on the scientific Advisory Board for SISCAPA Assay Technologies. The other authors declare no competing interests.

**Patient consent for publication** Not applicable.

**Ethics approval** This study involves human participants and was approved by West Midlands/South Birmingham Research Ethics Committee (REC reference 18/WM/0144; IRAS 245363). Participants gave informed consent to participate in the study before taking part.

**Provenance and peer review** Not commissioned; externally peer reviewed.

**Data availability statement** Data are available upon reasonable request.

**Supplemental material** This content has been supplied by the author(s). It has not been vetted by BMJ Publishing Group Limited (BMJ) and may not have been peer-reviewed. Any opinions or recommendations discussed are solely those

of the author(s) and are not endorsed by BMJ. BMJ disclaims all liability and responsibility arising from any reliance placed on the content. Where the content includes any translated material, BMJ does not warrant the accuracy and reliability of the translations (including but not limited to local regulations, clinical guidelines, terminology, drug names and drug dosages), and is not responsible for any error and/or omissions arising from translation and adaptation or otherwise.

**Open access** This is an open access article distributed in accordance with the Creative Commons Attribution Non Commercial (CC BY-NC 4.0) license, which permits others to distribute, remix, adapt, build upon this work non-commercially, and license their derivative works on different terms, provided the original work is properly cited, appropriate credit is given, any changes made indicated, and the use is non-commercial. See: <http://creativecommons.org/licenses/by-nc/4.0/>.

## ORCID iDs

Sue Philpott <http://orcid.org/0000-0002-1019-5871>  
 Ranjit Manchanda <http://orcid.org/0000-0003-3381-5057>  
 Michelle Lockley <http://orcid.org/0000-0002-9281-5789>  
 Naveena Singh <http://orcid.org/0000-0003-1782-1967>  
 Malcolm Scott <http://orcid.org/0000-0002-1675-4654>  
 D Gareth Evans <http://orcid.org/0000-0002-8482-5784>  
 Julian Adlard <http://orcid.org/0000-0002-1693-0435>  
 Emma Roisin Woodward <http://orcid.org/0000-0002-6297-2855>  
 Angela F Brady <http://orcid.org/0000-0003-1782-1967>  
 Louise Izatt <http://orcid.org/0000-0003-1258-4843>  
 Vishakha Tripathi <http://orcid.org/0000-0001-8118-8364>  
 Helen Hanson <http://orcid.org/0000-0002-3303-8713>  
 Katie Snape <http://orcid.org/0000-0002-1739-7986>  
 Adam N Rosenthal <http://orcid.org/0000-0001-6924-0721>

## REFERENCES

- Rubin SC, Blackwood MA, Bandera C, Behbakht K, Benjamin I, Rebbeck TR, Boyd J. *BRCA1, BRCA2*, and hereditary nonpolyposis colorectal cancer gene mutations in an unselected ovarian cancer population: relationship to family history and implications for genetic testing. *Am J Obstet Gynecol* 1998;178:670–7.
- Morgan RD, Burghel GJ, Flaum N, Bulman M, Clamp AR, Hasan J, Mitchell CL, Schlecht H, Woodward ER, Lalloo FI, Crosbie EJ, Edmondson RJ, Wallace AJ, Jayson GC, Evans DGR. Prevalence of germline pathogenic *BRCA1/2* variants in sequential epithelial ovarian cancer cases. *J Med Genet* 2019;56:301–7.
- Ledermann JA, Drew Y, Kristeleit RS. Homologous recombination deficiency and ovarian cancer. *Eur J Cancer* 2016;60:49–58.
- Kuchenbaecker KB, Hopper JL, Barnes DR, Phillips K-A, Mooij TM, Roos-Blom M-J, Jervis S, van Leeuwen FE, Milne RL, Andrieu N, Goldgar DE, Terry MB, Rookus MA, Easton DF, Antoniou AC, McGuffog L, Evans DG, Barrowdale D, Frost D, Adlard J, Ong K-F, Izatt L, Tischkowitz M, Eeles R, Davidson R, Hodgson S, Ellis S, Nogues C, Lasset C, Stoppa-Lyonnet D, Fricker J-P, Faivre L, Berthet P, Hoening MJ, van der Kolk LE, Kets CM, Adank MA, John EM, Chung WK, Andrulis IL, Southey M, Daly MB, Buys SS, Osorio A, Engel C, Kast K, Schmutzler RK, Caldes T, Jakubowska A, Simard J, Friedlander ML, McLachlan S-A, Machackova E, Foretova L, Tan YY, Singer CF, Olah E, Gerdes A-M, Arver B, Olsson H, BRCA1 and BRCA2 Cohort Consortium. Risks of breast, ovarian, and contralateral breast cancer for *BRCA1* and *BRCA2* mutation carriers. *JAMA* 2017;317:2402–16.
- National Comprehensive Cancer Network. Available: [https://www.nccn.org/professionals/physician\\_gls/pdf/genetics\\_bop.pdf](https://www.nccn.org/professionals/physician_gls/pdf/genetics_bop.pdf)
- Smith MJ, Gerber D, Olsen A, Khouri OR, Wang Y, Liu M, Smith J, Pothuri B. Uptake and timing of risk-reducing salpingo-oophorectomy among patients with *BRCA1* and *BRCA2* mutations. *Am J Obstet Gynecol* 2021;225:508.e1–508.e10. doi:10.1016/j.ajog.2021.06.070
- Metcalfe K, Eisen A, Senter L, Armel S, Bordeleau L, Meschino WS, Pal T, Lynch HT, Tung NM, Kwong A, Ainsworth P, Karlan B, Moller P, Eng C, Weitzel JN, Sun P, Lubinski J, Narod SA, Hereditary Breast Cancer Clinical Study Group. International trends in the uptake of cancer risk reduction strategies in women with a *BRCA1* or *BRCA2* mutation. *Br J Cancer* 2019;121:15–21.
- Marcinkute R, Woodward ER, Gandhi A, Howell S, Crosbie EJ, Wissely J, Harvey J, Highton L, Murphy J, Holland C, Edmondson R, Clayton R, Barr L, Harkness EF, Howell A, Lalloo F, Evans DG. Uptake and efficacy of bilateral risk reducing surgery in unaffected female *BRCA1* and *BRCA2* carriers. *J Med Genet* 2022;59:jmedgenet-2020-107356.
- Evans DGR, Lalloo F, Ashcroft L, Shenton A, Clancy T, Baildam AD, Brain A, Hopwood P, Howell A. Uptake of risk-reducing surgery in unaffected women at high risk of breast and ovarian cancer is risk, age, and time dependent. *Cancer Epidemiol Biomarkers Prev* 2009;18:2318–24.
- Manchanda R, Burnell M, Abdelrahman A, Johnson M, Sharma A, Benjamin E, Brunell C, Saridogan E, Gessler S, Oram D, Side L, Rosenthal AN, Jacobs I, Menon U. Factors influencing uptake and timing of risk reducing salpingo-oophorectomy in women at risk of familial ovarian cancer: a competing risk time to event analysis. *BJOG* 2012;119:527–36.

- 11 Rosenthal AN, Fraser LSM, Philpott S, Manchanda R, Burnell M, Badman P, Hadwin R, Rizzuto I, Benjamin E, Singh N, Evans DG, Eccles DM, Ryan A, Liston R, Dawney A, Ford J, Gunu R, Mackay J, Skates SJ, Menon U, Jacobs IJ, United Kingdom Familial Ovarian Cancer Screening Study collaborators. Evidence of stage shift in women diagnosed with ovarian cancer during phase II of the United Kingdom familial ovarian cancer screening study. *J Clin Oncol* 2017;35:1411–20.
- 12 Skates SJ, Greene MH, Buys SS, Mai PL, Brown P, Piedmonte M, Rodriguez G, Schorge JO, Sherman M, Daly MB, Rutherford T, Brewster WR, O'Malley DM, Partridge E, Boggess J, Drescher CW, Isaacs C, Berchuck A, Domchek S, Davidson SA, Edwards R, Elg SA, Wakeley K, Phillips K-A, Armstrong D, Horowitz I, Fabian CJ, Walker J, Sluss PM, Welch W, Minasian L, Horick NK, Kasten CH, Nayfield S, Alberts D, Finkelstein DM, Lu KH. Early Detection of Ovarian Cancer using the Risk of Ovarian Cancer Algorithm with Frequent CA125 Testing in Women at Increased Familial Risk - Combined Results from Two Screening Trials. *Clin Cancer Res* 2017;23:3628–37.
- 13 Aletti GD, Dowdy SC, Podratz KC, Cliby WA. Relationship among surgical complexity, short-term morbidity, and overall survival in primary surgery for advanced ovarian cancer. *Am J Obstet Gynecol* 2007;197:676.e1–676.e7.
- 14 R Core Team. R: a language and environment for statistical computing., 2020. R foundation for statistical computing, Vienna, Austria. Available: <https://www.R-project.org/>
- 15 National Institute for Health and Care Excellence. Guidance: olaparib for maintenance treatment of BRCA mutation-positive advanced ovarian, fallopian tube or peritoneal cancer after response to first-line platinum-based chemotherapy.. Available: <https://www.nice.org.uk/guidance/ta598/chapter/2-Information-about-olaparib>
- 16 ROCA Test. ROCA test for ovarian cancer. Available: <https://www.therocatest.co.uk/roca-test/test-for-ovarian-cancer/>
- 17 National Institute for Health and Care Excellence. Carrying NICE over the threshold. Available: <https://www.nice.org.uk/news/blog/carrying-nice-over-the-threshold>
- 18 Gronwald J, Lubinski J, Huzarski T, Cybulski C, Menkiszak J, Siolek M, Stawicka M, Sun P, Kim SJ, Kotsopoulos J, Narod SA. A comparison of ovarian cancer mortality in women with BRCA1 mutations undergoing annual ultrasound screening or preventive oophorectomy. *Gynecol Oncol* 2019;155:270–4.
- 19 Menon U, Gentry-Maharaj A, Burnell M, Singh N, Ryan A, Karpinskyj C, Carlino G, Taylor J, Massingham SK, Raikou M, Kalsi JK, Woolas R, Manchanda R, Arora R, Casey L, Dawney A, Dobbs S, Leeson S, Mould T, Seif MW, Sharma A, Williamson K, Liu Y, Fallowfield L, McGuire AJ, Campbell S, Skates SJ, Jacobs IJ, Parmar M. Ovarian cancer population screening and mortality after long-term follow-up in the UK Collaborative trial of ovarian cancer screening (UKCTOCS): a randomised controlled trial. *Lancet* 2021;397:2182–93.
- 20 Chetrit A, Hirsh-Yechezkel G, Ben-David Y, Lubin F, Friedman E, Sadetzki S. Effect of BRCA1/2 mutations on long-term survival of patients with invasive ovarian cancer: the National Israeli study of ovarian cancer. *J Clin Oncol* 2008;26:20–5.
- 21 Candido-dos-Reis FJ, et al. Australian ovarian cancer Study Group. germline mutation in BRCA1 or BRCA2 and ten-year survival for women diagnosed with epithelial ovarian cancer. *Clin Cancer Res* 2015;21:652–7.
- 22 Queen Mary University of London. Protector trial. (ISRCTN25173360). Available: <http://protector.org.uk/>
- 23 Gaba F, Robbani S, Singh N, McCluggage WG, Wilkinson N, Ganesan R, Bryson G, Rowlands G, Tyson C, Arora R, Saridogan E, Hanson H, Burnell M, Legood R, Evans DG, Menon U, Manchanda R, PROTECTOR team. Preventing ovarian cancer through early excision of tubes and late ovarian removal (protector): protocol for a prospective non-randomised multi-center trial. *Int J Gynecol Cancer* 2021;31:286–91.
- 24 U.S. National Library of Medicine. TUBectomy with delayed oophorectomy in high risk women to assess the safety of prevention (TUBA-WISP-II), 2020. Available: <https://clinicaltrials.gov/ct2/show/NCT04294927>
- 25 U.S. National Library of Medicine. Prophylactic Salpingectomy With Delayed Oophorectomy, 2013. Available: <https://clinicaltrials.gov/ct2/show/NCT01907789>