

Association of Cerebrovascular and Alzheimer Disease Biomarkers With Cholinergic White Matter Degeneration in Cognitively Unimpaired Individuals

Nira Cedres, PhD, Daniel Ferreira, PhD, Milan Nemy, Msc, Alejandra Machado, PhD, Joana B. Pereira, PhD, Sara Shams, PhD, Lars-Olof Wahlund, PhD, Anna Zettergren, PhD, Olga Stepankova, PhD, Lenka Vyslouzilova, PhD, Maria Eriksdotter, PhD, Stefan Teipel, MD, Michel J. Grothe, PhD, Kaj Blennow, MD, PhD, Henrik Zetterberg, MD, PhD, Michael Schöll, PhD, Silke Kern, PhD, Ingmar Skoog, MD, PhD,* and Eric Westman, PhD*

Correspondence

Dr. Ferreira
daniel.ferreira.padilla@ki.se

Neurology® 2022;99:e1619-e1629. doi:10.1212/WNL.000000000200930

Abstract

Background and Objectives

Several pathologic processes might contribute to the degeneration of the cholinergic system in aging. We aimed to determine the contribution of amyloid, tau, and cerebrovascular biomarkers toward the degeneration of cholinergic white matter (WM) projections in cognitively unimpaired individuals.

Methods

The contribution of amyloid and tau pathology was assessed through CSF levels of the A β _{42/40} ratio and phosphorylated tau (p-tau). CSF A β ₃₈ levels were also measured. Cerebrovascular pathology was assessed using automatic segmentations of WM lesions (WMLs) on MRI. Cholinergic WM projections (i.e., cingulum and external capsule pathways) were modeled using tractography based on diffusion tensor imaging data. Sex and APOE ϵ 4 carriership were also included in the analysis as variables of interest.

Results

We included 203 cognitively unimpaired individuals from the H70 Gothenburg Birth Cohort Studies (all individuals aged 70 years, 51% female). WM lesion burden was the most important contributor to the degeneration of both cholinergic pathways (increase in mean square error [IncMSE] = 98.8% in the external capsule pathway and IncMSE = 93.3% in the cingulum pathway). Levels of A β ₃₈ and p-tau also contributed to cholinergic WM degeneration, especially in the external capsule pathway (IncMSE = 28.4% and IncMSE = 23.4%, respectively). The A β _{42/40} ratio did not contribute notably to the models (IncMSE < 3.0%). APOE ϵ 4 carriers showed poorer integrity in the cingulum pathway (IncMSE = 21.33%). Women showed poorer integrity of the external capsule pathway (IncMSE = 21.55%), which was independent of amyloid status as reflected by the nonsignificant differences in integrity when comparing amyloid-positive vs amyloid-negative women participants ($T_{201} = -1.55$; $p = 0.123$).

*These authors contributed equally to this work as co-senior authors.

From the Division of Clinical Geriatrics (N.C., D.F., A.M., J.B.P., S.S., L.-O.W., M.E., E.W.), Centre for Alzheimer Research, Department of Neurobiology, Care Sciences, and Society, and the Division of Insurance Medicine (A.M.), Department of Clinical Neuroscience, Karolinska Institutet, Stockholm; Department of Psychology (N.C.), Sensory Cognitive Interaction Laboratory (SCI-lab), Stockholm University, Sweden; Department of Radiology (D.F.), Mayo Clinic, Rochester, MN; Department of Cybernetics (M.N.), Faculty of Electrical Engineering and Czech Institute of Informatics (M.N., O.S., L.V.), Robotics, and Cybernetics, Czech Technical University, Prague, Czech Republic; Clinical Memory Research Unit (J.B.P.), Department of Clinical Sciences, Lund University, Malmö; Department of Psychiatry Cognition and Old Age Psychiatry, (A.Z., S.K., I.S.), Clinical Neurochemistry Laboratory (K.B., H.Z.), and Department of Clinical Physiology (M.S.), Sahlgrenska University Hospital, Gothenburg; Neuropsychiatric Epidemiology Unit (A.Z., K.B., H.Z., S.K., I.S.), Department of Psychiatry and Neurochemistry, Institute of Neuroscience and Physiology, the Sahlgrenska Academy, Centre for Ageing and Health (AGECAP) at the University of Gothenburg; Theme Inflammation and Aging (M.E.), Karolinska University Hospital, Huddinge, Sweden; Clinical Dementia Research Section (S.T.), Department of Psychosomatic Medicine, University Medicine Rostock; German Center for Neurodegenerative Diseases (DZNE) (S.T., M.J.G.), Rostock, Germany; Unidad de Trastornos del Movimiento (M.J.G.), Servicio de Neurología y Neurofisiología Clínica, Instituto de Biomedicina de Sevilla (IBiS), Hospital Universitario Virgen del Rocío/CSIC/Universidad de Sevilla, Spain; Department of Neurodegenerative Disease (H.Z.), UCL Institute of Neurology, London; Dementia Research Institute at UCL (H.Z.), London, UK; Hong Kong Center for Neurodegenerative Diseases (H.Z.), China; Wallenberg Centre for Molecular and Translational Medicine (M.S.) and Department of Psychiatry and Neurochemistry (M.S.), Institute of Physiology and Neuroscience, University of Gothenburg, Sweden; Dementia Research Centre (M.S.), Institute of Neurology, University College London; and Department of Neuroimaging (E.W.), Centre for Neuroimaging Sciences, Institute of Psychiatry, Psychology and Neuroscience, King's College London, UK.

Go to [Neurology.org/N](https://www.neurology.org/N) for full disclosures. Funding information and disclosures deemed relevant by the authors, if any, are provided at the end of the article.

The Article Processing Charge was funded by the authors.

This is an open access article distributed under the terms of the Creative Commons Attribution License 4.0 (CC BY), which permits unrestricted use, distribution, and reproduction in any medium, provided the original work is properly cited.

Glossary

AD = Alzheimer disease; CDR = Clinical Dementia Rating; DTI = diffusion tensor imaging; FA = fractional anisotropy; FLAIR = Fluid-attenuated inversion recovery; MD = mean diffusivity; MMSE = Mini-Mental State Examination; NBM = nucleus basalis of Meynert; RF = random forest; RT = repetition time; SWI = susceptibility-weighted imaging; TE = echo time; TIV = total intracranial volume; WM = white matter; WML = WM lesion.

Discussion

In cognitively unimpaired older individuals, WMLs play a central role in the degeneration of cholinergic pathways. Our findings highlight the importance of WM lesion burden in the elderly population, which should be considered in the development of prevention programs for neurodegeneration and cognitive impairment.

The cholinergic neurons located in the nucleus basalis of Meynert (NBM) provide the major cholinergic input to the cerebral cortex and are essential to cognitive functioning.¹ Postmortem studies have traced 2 principal cholinergic projection pathways from the NBM to the neocortex: the medial and the lateral pathways.¹ The medial pathway advances through the white matter (WM) axons of the rectus gyrus, bends at the rostrum of the corpus callosum, and enters the cingulum bundle, projecting to the paraolfactory, cingulate, and retrosplenial cortices. The lateral pathway advances both through the claustrum and the extreme capsule (i.e., perisylvian division), projecting to the frontoparietal operculum, insula, and superior temporal gyrus, and through the external capsule and uncinat fasciculus (i.e., capsular division), projecting to the remaining parts of the frontal, parietal, and temporal neocortex. Recent diffusion tensor imaging (DTI)-based tractography studies have examined these pathways,^{2–5} providing the opportunity to study the integrity of the cholinergic system and its potential association with cognitive performance and pathophysiologic processes *in vivo*.

The strategic location of the NBM and its connective circuitry to the cortex results in increased vulnerability to brain pathology. For example, cholinergic neurons are affected in early stages of Alzheimer disease (AD)-related tauopathy due to their proximity to heavily affected basotemporal regions, which likely also alters their connective circuitry to the cortex.¹ Furthermore, other age-related pathologies can also affect the integrity of the cholinergic system. WM lesions (WMLs), which are thought to be a marker of cerebrovascular disease, are commonly found on MRI in the elderly.⁶ A recent study showed that WMLs are associated with worse integrity of the cholinergic projections in cognitively unimpaired older individuals,⁴ and cholinergic projections influenced cognitive performance.⁴ Of interest, despite the association of WMLs with the integrity of the cholinergic projection system, neither WML burden itself nor NBM volume contributed to cognitive performance.⁴ These findings raised the question of whether other age-associated pathologies apart from WMLs might be affecting the integrity of the cholinergic projections in cognitively unimpaired individuals.

In this study, we investigated the contribution of amyloid and tau pathology in combination with cerebrovascular disease toward the degeneration of cholinergic WM projections in cognitively unimpaired individuals. It is important to address these research questions to assess whether and how other pathologies apart from cerebrovascular disease may affect the integrity of cholinergic projections in cognitively unimpaired individuals.

Methods

Participants

The study sample belongs to the Gothenburg H70 Birth Cohort Studies.⁷ Every 70-year-old listed in the Swedish Population Registry as a resident in Gothenburg (Sweden) was invited to a comprehensive examination on aging and age-related factors.⁷ A total of 1,203 individuals born in 1944 (response rate 72.2%; mean age 70.5 years) agreed to participate, of whom 430 consented to a lumbar puncture (response rate 35.8%). Lumbar puncture was considered as contraindicated in participants under anticoagulant therapy, immune-modulated therapy, and cancer therapy. After excluding participants not suitable for a lumbar puncture, the CSF extraction was conducted in 322 (26.8%) individuals. Every participant was also invited to take part in a brain MRI examination, of which 792 individuals (response rate 65.8%) underwent MRI conducted at Aleris in Gothenburg. The MRI examination was conducted within 3 months from the initial study visit. The lumbar puncture was conducted within 2 months from the MRI examination. The general examinations and other procedures have previously been described in detail.⁷ General cognitive status was measured using the Mini-Mental State Examination (MMSE) and the Clinical Dementia Rating (CDR) scale. For the current study, inclusion criteria were (1) a CDR score of 0; (2) MMSE >24; (3) availability of CSF biomarkers; and (4) availability of MRI data, yielding a final sample of 203 individuals (51% female).

MRI Data Acquisition, Image Processing, and Assessment of WMLs

MRI data were acquired in a 3.0 T Philips Achieva system (Philips Medical Systems), using a 3D T1-weighted turbo field echo sequence (repetition time [RT] = 7.2 ms, echo time

Table 1 Study Sample Demographic and Clinical Data

	Mean (SD)
n	203
Sex (% female)	51
APOE status (% ε4 carriers)	35
MMSE	29.23 (0.98)
Education (y)	13.22 (3.95)
WML volume (mL)	3.01 (2.30)
Aβ ₃₈ (pg/mL)	2498 (679.15)
Aβ _{42/40} ratio	—
p-tau (pg/mL)	49.45 (17.56)
NBM volume (TIV corrected)	0.20 (0.03)
MD in the cingulum pathway	0.00097 (0.00006)
MD in the external capsule pathway	0.00107 (0.00008)
Hypertension (%)	73.8
Diabetes (%)	11.3
Smoking (%)	61.7
Ischemia (%)	6.04
Cerebral microbleeds (%)	16.7
Lacunae (%)	8.4
Superficial siderosis (%)	1.5

Abbreviations: Aβ = β-amyloid; MD = mean diffusivity; MMSE = Mini-Mental State Examination; NBM = nucleus basalis of Meynert; p-tau = phosphorylated tau 181; WML = white matter lesion.

Values represent mean (SD) unless another parameter is specified. % represents the percentage of individuals with the presence of vascular risk factors of the presence of cerebral microbleeds, lacunae, or superficial siderosis.

[TE] = 3.2 ms, flip angle = 9°, matrix size = 250 × 250 mm, field of view = 256 × 256, and slice thickness = 1.0 mm); a 3D Fluid-attenuated inversion recovery (FLAIR) sequence (RT = 48,000 ms, TE = 280 ms, TI = 1,650 ms, flip angle = 90°, number of slices = 140, matrix size = 250 × 237 mm, and slice thickness = 2.0 mm); a susceptibility-weighted imaging (SWI) sequence (RT = 14.59–17.60 ms, TE = 20.59–24.99 ms, flip angle = 10°, matrix size = 229 × 222 mm, and slice thickness = 1.0 mm); and a DTI sequence encoded with 1 b-value shell: 800 ks/mm², along with 32 directions and 1 b = 0 image (RT = 7,340 ms, TE = 83 ms, flip angle = 90°, matrix size = 112 × 112 mm, field of view = 224 × 224, and slice thickness = 3.0 mm).⁷

WMLs were measured as WM hypointensities and WM hyperintensities in T1-weighted and FLAIR sequences, respectively. WML and total intracranial volume (TIV) were automatically segmented using FreeSurfer 6.0.0. FreeSurfer detects hypointense WM signal abnormalities and automatically labels WML volumes for each participant using a probabilistic procedure.⁸ Hyperintense WMLs were automatically segmented

using the open source segmentation toolbox LST 2.0.15.⁹ It has previously been shown that hypointense and hyperintense WMLs are strongly correlated.⁶ Previous findings revealed that hypointense WMLs might represent necrotic damage closer to accumulated cerebrovascular pathology,¹⁰ whereas hyperintense WMLs might also represent acute damage including peri-inflammatory processes.¹¹ Due to the aim of the current study, we focused on hypointense WMLs, but all the analyses were replicated using hyperintense WMLs and are reported in eFigure 1, links.lww.com/WNL/C220. MRI data management and processing was performed using the HiveDB¹² database system. WML volumes in milliliters (mL) were adjusted by TIV to account for variability in head size.¹³

Previously established ROI masks for the cholinergic WM pathways (i.e., cingulum and external capsule pathways) were used.⁴ Briefly, the masks were created using probabilistic diffusion-based fiber tracking of the NBM WM projections. These ROI masks of the cholinergic WM pathways were transferred from MNI standard space to each individual DTI image (b0) in native space using the nonlinear SyN registration algorithm¹⁴ from advanced normalization tools.¹⁵ Native space mean diffusivity (MD) maps were calculated for each subject using the FMRIB Diffusion Toolbox from FSL.¹⁶ Microstructural properties of each participant's cholinergic WM tracts were then calculated by averaging the MD values within the back-transformed ROI masks in native space. The MD index was preferred over the fractional anisotropy (FA) index because MD is more robust in the influence of crossing fibers.¹⁷

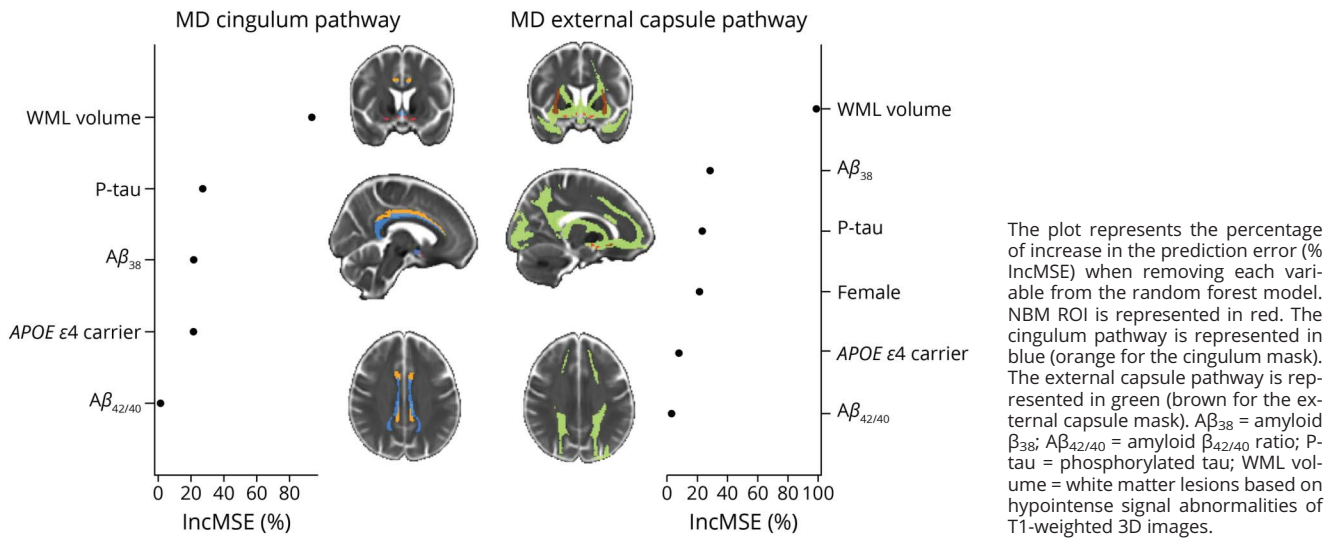
Complementary MRI Markers of Cerebrovascular Disease and Vascular Risk Factors

In addition to the automated measure of WMLs,¹⁸ we assessed cerebral microbleeds, lacunae, and superficial siderosis for completeness of information. The presence/absence of cerebral microbleeds was visually assessed on SWI, lacunae (3–15 mm) were assessed on FLAIR images, and superficial siderosis was assessed on SWI. All visual assessments were performed by an experience neuroradiologist blinded to clinical data,¹⁹ according to the Standards for Reporting Vascular Changes on Neuroimaging and standard scales and standardized scales.²⁰ We also recorded and described the frequency of vascular risk factors, including hypertension, diabetes, smoking, and ischemia as assessed through a semistructured interview and clinical examination by research nurses or medical doctors.⁷

CSF Sampling and Biomarker Analysis

Lumbar puncture for CSF sampling and determination of APOE ε4 carrier status were conducted following standard procedures.⁷ CSF biomarker levels were determined by a commercially available assay.⁷ CSF tau phosphorylated at threonine 181 (p-tau) was determined by immunoassay ELISA (INNOTEST PHOSPHO_TAU [181P]). The Aβ_{42/40} ratio and CSF Aβ₃₈ were determined by the V-PLEX Aβ Peptide Panel 1 (6E10) Kit (Meso Scale Discovery, Rockville, MD). We used p-tau to assess tau neurofibrillary tangle pathology. The CSF Aβ_{42/40} ratio was used as a marker of amyloidosis.²¹

Figure 1 Contribution of Amyloid, Tau, and Cerebrovascular Biomarkers Toward the Integrity of Cholinergic WM Pathways



For descriptive purposes, each individual was classified as positive (+; i.e., abnormal) or negative (–; i.e., normal) according to CSF biomarkers for $A\beta$ (CSF $A\beta_{42}$) and p-tau (CSF p-tau) following cohort-specific cutoff values: ≤ 530 pg/mL for $A\beta_{42}$ and p-tau > 80 .²² $A\beta_{38}$, a shorter isoform of $A\beta$ that can also be found in the CSF, is still poorly understood. A previous study suggested that $A\beta_{38}$ could be a marker of AD.²³ Another study reported a predominant localization of $A\beta_{38}$ within the vascular vessels in patients with AD.²⁴ In addition, there is also evidence showing the presence of $A\beta_{38}$ in other non-AD dementias^{25–27} and patients with chronic neuroinflammation.²³ These diverse findings reflect the view that the role of $A\beta_{38}$ still needs to be elucidated. Hence, we included CSF $A\beta_{38}$ in this study to determine its association with AD biomarkers and cerebrovascular disease in the general population.

Statistical Analysis

Statistical analyses were conducted using R statistical software.²⁸ A *p* value < 0.05 (2 tailed) was deemed significant in all the analyses.

We used random forest (RF) regression models to assess the differential contributions of the different pathology-specific biomarkers toward the integrity of NBM projections. Two separate RF regression models, treated as the outcome variables, were fitted for the prediction of MD in the cingulum and the external capsule pathway, respectively. MD values were multiplied by a constant ($c = 10,000$) to facilitate the visualization of the data. WML, CSF $A\beta_{42/40}$ ratio, $A\beta_{38}$, and p-tau were included as predictors in all RF models, along with sex (i.e., male/female) and *APOE* status (i.e., at least 1 $\epsilon 4$ allele to be treated as carrier, otherwise noncarrier). RF is a machine learning method that estimates multiple decision trees via bootstrap aggregation (bagging). Each tree predicts a classification independently and votes for the corresponding class. The majority of the votes

decide the overall prediction.^{29,30} A conditional importance score is computed for each tree in RF analysis. This is performed by measuring the change in the prediction error when the values of a certain variable are permuted within a grid defined by the included covariates. Then, this conditional score is averaged across the entire ensemble. These conditional importance scores are designed to reduce the undesirable effects of collinearity among predictor variables. The final importance of each predictor denotes its contribution to the model. Importance values below or equal to zero denote no contribution. A conditional regression tree is produced as a graphical representation of the model. The RF comprised 5,000 conditional inference trees. R^2 was computed to assess the quality of the RF models. Although aging is associated with WM neurodegeneration and greater WML volumes,^{4,31} age was not included as a covariate in the models because it was controlled from the design (i.e., all participants were aged 70 years). For completeness of information, we also report Pearson correlation coefficients among the predictor variables included in the RF models and independent sample *t* tests for categorical variables that resulted important in the RF analysis. The randomForest³² and party packages³³ were used for these analyses.

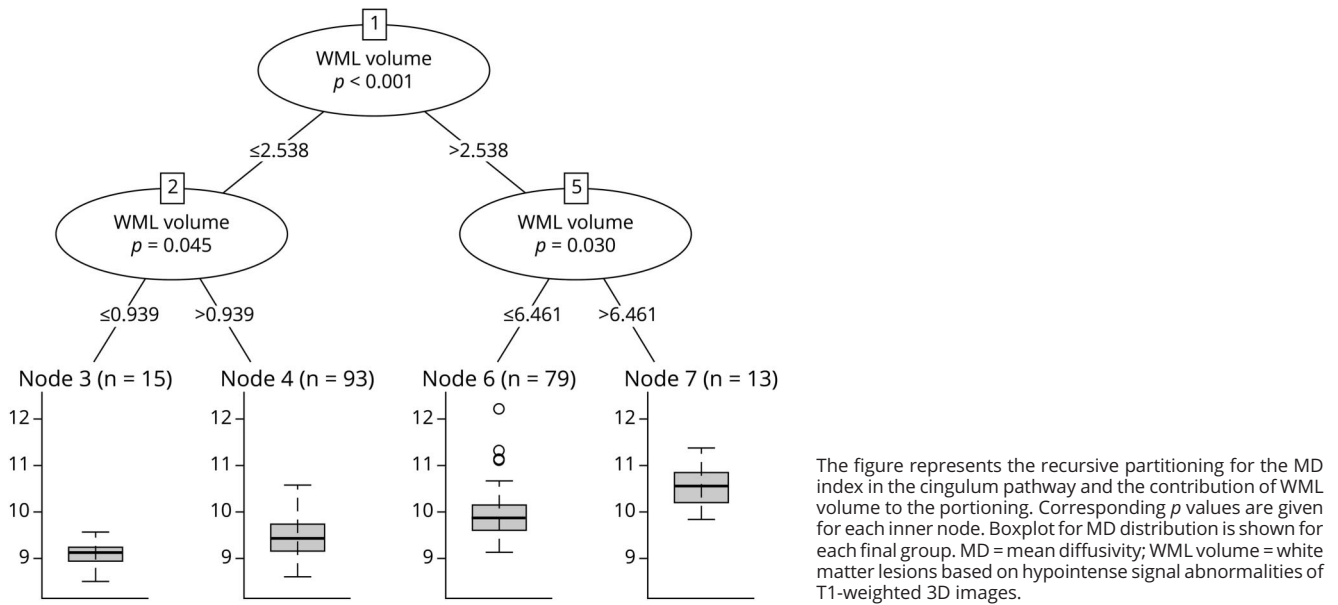
Standard Protocol Approvals, Registrations, and Patient Consents

The H70 study was approved by the Regional Ethical Review Board in Gothenburg (Approval Numbers: 869-13, T076-14, T166-14, 976-13, 127-14, T936-15, 006-14, T703-14, 006-14, T201-17, T915-14, 959-15, and T139-15) and by the Radiation Protection Committee (Approval Number: 13-64) in concordance with the 1964 Helsinki Declaration and its later amendment.

Data Availability

The authors state that anonymized data on which the article is based will be shared by request from any qualified investigator.

Figure 2 Random Forest Regression Tree for the MD in the Cingulum Pathway



Results

Demographic, clinical data, vascular risk factors, and MRI markers of cerebrovascular disease are shown in Table 1. In our sample of 203 cognitively unimpaired individuals (all aged 70 years, 51% female), 2% had an AD biomarker profile (i.e., A+ T+), 43% had abnormal CSF levels of β -amyloid only (i.e., A+ T-), and 4.4% had abnormal CSF levels of p-tau only (i.e., A- T+). Results are shown for hypointense WML volume from T1-weighted 3D images. Virtually, the same results were obtained when including hyperintense WMLs instead of hypointense WMLs in the models (eFigure 1, links.lww.com/WNL/C220).

The RF models showed that WML volume was the most important predictor for the average MD of the cingulum pathway (Figure 1). P-tau, $A\beta_{38}$, and *APOE* $\epsilon 4$ carriership were also important predictors in the model. The $A\beta_{42/40}$ ratio received a low importance score. Sex did not contribute to the MD in the cingulum pathway. The RF tree revealed that WML volume was the best predictor splitting individuals according to their MD in the cingulum pathway. Four groups were distinguished (Figure 2). P-tau, $A\beta_{38}$, $A\beta_{42/40}$ ratio, sex, and *APOE* $\epsilon 4$ carriership did not separate any of the groups based on their association with MD in the cingulum pathway.

Regarding the prediction of the MD in the external capsule pathway, WML volume was again the most important predictor (Figure 1). $A\beta_{38}$, p-tau, and sex were also important in the model. Women showed poorer integrity in the external capsule pathway. This finding was independent of amyloid status, as reflected by the nonsignificant differences in integrity when comparing amyloid-positive vs amyloid-negative

women participants ($T_{201} = -1.55$; $p = 0.123$). *APOE* $\epsilon 4$ carriership received a low importance score, and the $A\beta_{42/40}$ ratio did not contribute to the MD in the external capsule pathway. The RF tree revealed that WML volume, $A\beta_{38}$, and p-tau were important predictors to split individuals according to their MD in the external capsule. Five groups were distinguished at the end of the tree (Figure 3).

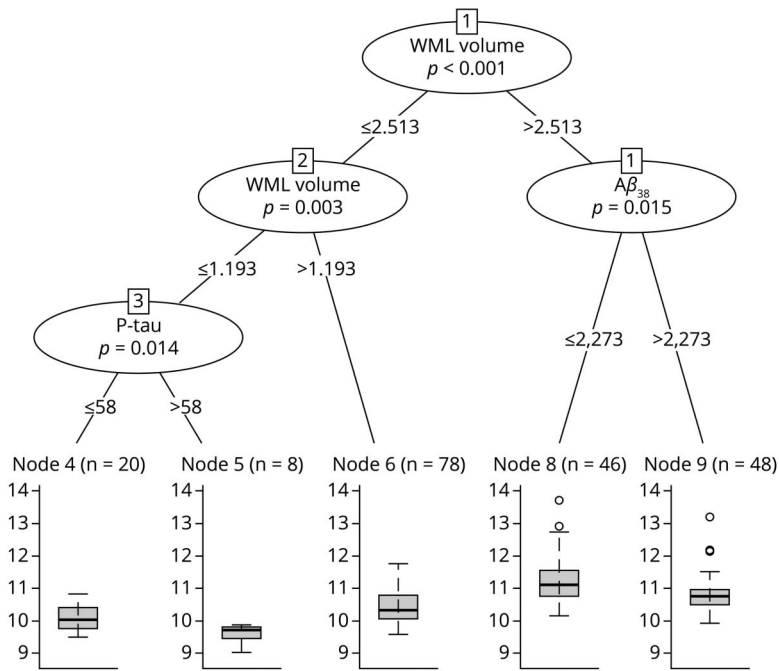
Figure 4 shows the correlation matrix for all pairs of continuous predictors in the RF models. Greater WML volumes were associated with lower $A\beta_{38}$ levels. Higher p-tau levels were associated with lower $A\beta_{42/40}$ ratio and higher $A\beta_{38}$ levels.

Discussion

In our study, we investigated the contribution of cerebrovascular disease compared with amyloid pathology and tau pathology toward the degeneration of cholinergic WM pathways in cognitively unimpaired individuals. We demonstrated the role of WML burden as a central contributor to the degeneration of the cholinergic projections.

The NBM is well known for its key role in cognitive functioning and its deterioration is linked to cognitive impairment in AD.¹ It is important to determine the pathologic processes contributing toward degeneration of the cholinergic system as it has previously been demonstrated to be associated with cognitive impairment in advanced aging.⁴ In this sample of cognitively unimpaired aged individuals, we demonstrated that WMLs were the most important contributor toward the degeneration of the studied cholinergic pathways, followed by

Figure 3 Random Forest Regression Tree for the MD in the External Capsule Pathway



The figure represents the recursive partitioning for the MD index in the external capsule pathway and the contribution of WML volume, p-tau, and $A\beta_{38}$ to the partitioning. Corresponding *p* values are given for each inner node. Boxplot for MD distribution is shown for each final group. $A\beta_{38}$ = amyloid β_{38} ; MD = mean diffusivity; P-tau = phosphorylated tau; WML volume = white matter lesions based on hypointense signal abnormalities of T1-weighted 3D images.

CSF $A\beta_{38}$ and p-tau levels. Conversely, the $A\beta_{42/40}$ ratio did not show a substantial contribution.

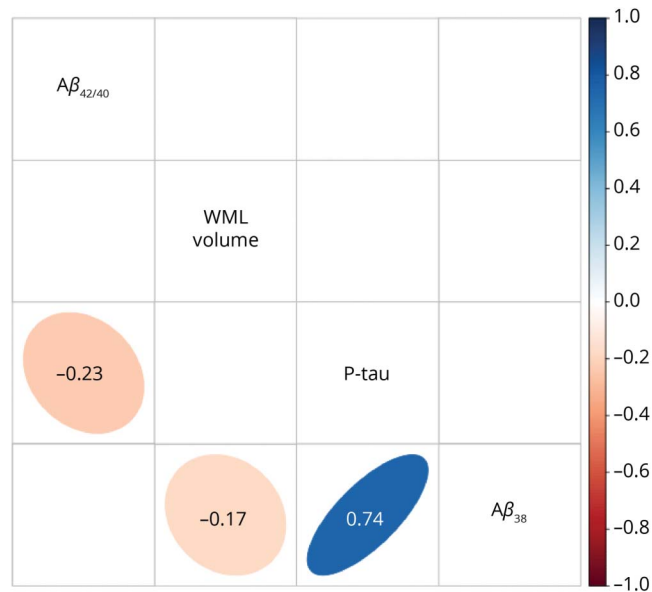
The integrity of the cholinergic system is crucial for proper cognitive functioning.¹ The cholinergic hypothesis of cognitive aging postulates that age-related memory decline and other cognitive problems may arise due to declining cholinergic activity.^{34,35} In a previous study, we demonstrated that the WM integrity of cholinergic projections was closely associated with attention and memory performance in an independent aging cohort of cognitively unimpaired individuals.⁴ The influence of WML burden on cortical disconnection of the cholinergic system might be associated with subclinical cognitive impairments in the elderly. Longitudinal studies have shown that a high WML burden increases the risk of future cognitive impairment.³⁶ Future studies should determine the disruptive role of WMLs in the association between cholinergic projections and cognitive performance in normal aging and the continuum of AD.

Although WML burden was the most important predictor in our RF models, we found that $A\beta_{38}$ also contributed to the integrity of the cholinergic system. In contrast, the $A\beta_{42/40}$ ratio was not an important predictor of neurodegeneration of cholinergic WM projections. The role of CSF $A\beta_{38}$ and its association with neurodegeneration is still under debate.^{37,38} CSF $A\beta_{38}$ levels are lower in frontotemporal dementia²⁵ and dementia with Lewy bodies^{26,27} than in patients with AD. Furthermore, $A\beta_{38}$ has previously been linked to increased counts of lacunes and cerebral microbleeds, 2 markers of

cerebrovascular disease.³⁹ Deposits of $A\beta_{38}$ in vascular vessels have also been found in postmortem AD studies.²⁴ Therefore, several studies suggest a potential association of $A\beta_{38}$ with cerebrovascular pathology. In line with this, we showed that lower CSF $A\beta_{38}$ levels were associated with a higher WML burden. In our study, both WML burden and CSF $A\beta_{38}$ were the most important predictors of WM neurodegeneration of the cholinergic system compared with AD biomarkers (CSF $A\beta_{42/40}$ and p-tau). These findings suggest an association between $A\beta_{38}$ and cerebrovascular disease in normal aging and their predilection for the cholinergic WM. Recent reports have demonstrated that higher levels of $A\beta_{38}$ in the CSF may have a protective effect against future cognitive decline and AD dementia in individuals with a positive AD biomarker profile at baseline.⁴⁰ In support of this, decreased CSF $A\beta_{38}$ levels have previously been linked to reduced cingulate and insula cortex volumes in our cohort.³⁷ The cingulate cortex receives important cholinergic input from the medial cholinergic pathway and the insula from the lateral cholinergic pathway.¹ These areas are well known for their role in emotion regulation, behavior, and executive functioning.⁴¹ Future studies should test whether $A\beta_{38}$, neurodegeneration of the cholinergic system and reduced cingulate and insula gray matter volumes are associated with subclinical changes in emotion regulation and executive functioning in the elderly.

The cholinergic circuitry is highly vulnerable to brain pathology. In our study, we found pathway-dependent associations of WML, $A\beta_{38}$, and tau (p-tau) pathologic markers with cholinergic WM projections. Our results show that individuals

Figure 4 Correlation Matrix for the Predictors Included in the Random Forest Models



Background of significant correlations ($p < 0.05$) was colored according to the value of the correlation coefficient and shaped accordingly to the association distribution, otherwise left empty.

with decreased $A\beta_{38}$ and high WML burden had the poorest integrity of the external capsule pathway. Of interest, women also showed poorer integrity in the external capsule pathway, independently of amyloid status. In contrast, WML burden was the only predictor of the integrity in the cingulum pathway. These pathway-dependent findings point to a greater vulnerability of the cingulum pathway to vascular pathology, in comparison to amyloid/tau pathologies. Regionally, the cingulum pathway is located in periventricular regions, where the presence of WMLs increases with aging.⁴² Periventricular WMLs have previously been associated with lower cortical cholinergic activity in normal aging.⁴³ Conversely, the external capsule pathway might be more vulnerable to cerebrovascular disease and pathologies associated with $A\beta_{38}$.

Regarding tau pathology, our results showed a negative association between p-tau and degeneration of cholinergic WM projections (i.e., a poorer integrity of WM projections was associated with lower levels of CSF p-tau). This counterintuitive finding might be the result of a selection bias in our sample. All our participants were cognitively unimpaired 70-year-olds, and only 6.4% had abnormal CSF p-tau levels. It is important to take into consideration that the combination of abnormal levels of p-tau with other brain pathologies such as WMLs will most probably result in cognitive impairment, and therefore, those individuals may have been excluded from our study. Whether increased CSF p-tau levels are associated with degeneration of cholinergic WM projections needs to be further tested in more diverse populations of older individuals, including patients with cognitive impairment.

The data provided by this study describe the contribution of the CSF $A\beta_{42/40}$ ratio, $A\beta_{38}$, and p-tau levels in combination with WML burden toward the degeneration of the cholinergic system in cognitively unimpaired elderly from a population-based cohort.⁷ However, all individuals included were aged 70 years; therefore, results can only be partially generalized to other age groups. A limitation of the current study, intrinsic to the tractography approach used to generate the cholinergic WM projection masks, is the existence of transverse crossing WM fibers that can lead to distorted information about the WM integrity. We aimed to partly overcome this limitation by using the MD index instead of FA because MD is less affected by crossing fibers.¹⁷ The associations between amyloid/tau biomarkers and WMLs might lead to collinearity problems. Using RF regression with conditional inference trees, we were able to handle multicollinearity to some degree. Alternative information about the spatial location of WMLs and cholinergic functional activity profiles based on fMRI could complement the findings of our current study.² We demonstrated an association between $A\beta_{38}$ and the degeneration of the cholinergic system. Nevertheless, the literature about the role of $A\beta_{38}$ in neurodegenerative processes is still limited, and further research is needed. There is currently a discussion ongoing as to whether the validated biomarker cutoffs for dementia diagnosis are clinically relevant for preclinical stages of the disease.⁴⁴ Subthreshold pathology in individuals exhibiting normal biomarker profiles might already be affecting the brain integrity leading to WM degeneration. Thus, in our study, we used continuous values as the input for the analysis. The integrity of the cholinergic projections across abnormal amyloid/tau profiles in clinical stages of AD needs to be further elucidated. Finally, a previous study demonstrated that WMLs can also be related to AD pathology.⁴⁵ However, in our study, WMLs were not associated with CSF levels of $A\beta_{42/40}$ and p-tau, which suggests that our WML measure likely does not reflect AD pathology.²⁰

This study highlights the importance of cerebrovascular pathology relative to amyloid and tau pathology in their contribution to cholinergic neurodegeneration in cognitively unimpaired individuals. WMLs within cholinergic pathways correlate with cognitive impairment⁴⁶ and executive dysfunction⁴⁷ in patients with dementia. Given the central role of the cholinergic system in cognition, our study suggests that management of cholinergic WMLs and vascular risk factors should be considered in the development of prevention programs for neurodegeneration and cognitive impairment. As these data are replicated in independent cohorts, it may help in clinical considerations with regard to cerebrovascular and AD biomarkers, cholinergic dysfunction, and cognitive impairment. This knowledge could eventually support therapeutic decisions in the context of acetylcholinesterase inhibitors.

Study Funding

This research was supported by the Swedish Research Council (2012-5041, 2013-8717, 2015-02830, 2016-02282, 2016-02282, 2020-02014, and 2021-01861), the Swedish

Research Council for Health, Working Life and Welfare (2013-1202, AGECAP 2013-2300, 2013-2496, and 2013-0475), the Swedish Foundation for Strategic Research (SSF, RB13-0192), the Strategic Research Programme in Neuroscience at Karolinska Institutet (StratNeuro), the Swedish State under the agreement between the Swedish government and the county councils, the ALF agreement (FoUI-954893 and FoUI-962240), the Center for Medical Innovation (CIMED, FoUI-954459 and FoUI-20200505), the Swedish Alzheimer Foundation (AF-967495, AF-939687, and AF-968032), the Swedish Brain Foundation (FO2020-0150, FO2021-0119, and FO2022-0175), Stonhes Stiftelse, Stiftelsen för Gamla Tjänarinnor, Demensförbundet, Neurofonden, Lindhés Advokatbyrå AB, Eivind och Elsa K: son Sylvans Stiftelse, Stiftelsen Demensfonden, Stiftelsen Hjalmar Svenssons Forskningsfond, Stiftelsen Wilhelm och Martina Lundgrens Vetenskapsfond, Funding for Geriatric diseases at Karolinska Institutet, Research funding at Karolinska Institutet, Fundacion Canaria Dr. Manuel Morales, and the Czech Alzheimer Foundation. MJG is supported by the “Miguel Servet” program [CP19/00031] and a research grant [PI20/00613] of the Instituto de Salud Carlos III-Fondo Europeo de Desarrollo Regional (ISCIII-FEDER). J.B. Pereira is supported by grants from the Swedish Research Council (2018-02201), the Strategic Research Programme in Neuroscience at Karolinska Institutet (StratNeuro Startup Grant), The Center for Medical Innovation (20200695), Gamla Tjänarinnor (2019-00803), Demensförbundet, Stonhes, and a Senior Researcher faculty position from Karolinska Institutet. H. Zetterberg is a Wallenberg Scholar supported by grants from the Swedish Research Council (#2018-02532), the European Research Council (#681712), Swedish State Support for Clinical Research (ALFGBG-720931), the Alzheimer Drug Discovery Foundation (ADDF), USA (201809-2016862), the AD Strategic Fund and the Alzheimer’s Association (ADSF-21-831376-C, ADSF-21-831381-C, and ADSF-21-831377-C), the Olav Thon Foundation, the Erling-Persson Family Foundation, Stiftelsen för Gamla Tjänarinnor, Hjärnfonden, Sweden (#FO2019-0228), the European Union’s Horizon 2020 research and innovation program under the Marie Skłodowska-Curie grant agreement No 860197 (MIRIADE), and the UK Dementia Research Institute at UCL. S. Kern was financed by grants from the Swedish state under the agreement between the Swedish government and the county councils, the ALF agreement (ALF GBG-81392 and ALF GBG-771071), the Alzheimerfonden (AF-842471, AF-737641, and AF-939825), and the Swedish Research Council (2019-02075) Stiftelsen Demensfonden, Stiftelsen Hjalmar Svenssons Forskningsfond, Stiftelsen Wilhelm och Martina Lundgrens Vetenskapsfond.

Disclosure

M. Eriksson has served as a consultant for Biogen unrelated to the present study. H. Zetterberg has served on scientific advisory boards and/or as a consultant for Alector, Eisai, Denali, Roche Diagnostics, Wave, Samumed, Siemens Healthineers, Pinteon Therapeutics, Nervgen, AZTherapies, CogRx, and Red Abbey Labs; has given lectures in symposia sponsored by Cellectric, Fujirebio, Alzecure, and Biogen; and is a cofounder of Brain Biomarker Solutions in Gothenburg AB (BBS), which is a part of

the GU Ventures Incubator Program (outside submitted work). S. Kern has served on a scientific advisory board and/or as a consultant for Geras Solutions and Biogen, unrelated to the present study. The other authors report no relevant disclosures. Go to [Neurology.org/N](https://www.neurology.org/N) for full disclosures.

Publication History

Received by *Neurology* October 28, 2021. Accepted in final form May 19, 2022. Submitted and externally peer reviewed. The handling editor was Rawan Tarawneh, MD.

Appendix Authors

Name	Location	Contribution
Nira Cedres, PhD	Division of Clinical Geriatrics, Centre for Alzheimer Research, Department of Neurobiology, Care Sciences, and Society, Karolinska Institutet, Stockholm, Sweden; Department of Psychology, Sensory Cognitive Interaction Laboratory (SCI-lab), Stockholm University, Stockholm, Sweden	Drafting/revision of the manuscript for content, including medical writing for content; study concept or design; and analysis or interpretation of data
Daniel Ferreira, PhD	Division of Clinical Geriatrics, Centre for Alzheimer Research, Department of Neurobiology, Care Sciences, and Society, Karolinska Institutet, Stockholm, Sweden; Department of Radiology, Mayo Clinic, Rochester, MN	Drafting/revision of the manuscript for content, including medical writing for content; study concept or design; and analysis or interpretation of data
Milan Nemy, MSc	Department of Cybernetics, Faculty of Electrical Engineering, Czech Technical University, Prague, Czech Republic; Czech Institute of Informatics, Robotics, and Cybernetics, Czech Technical University, Prague, Czech Republic	Drafting/revision of the manuscript for content, including medical writing for content; study concept or design; and analysis or interpretation of data
Alejandra Machado, PhD	Division of Clinical Geriatrics, Centre for Alzheimer Research, Department of Neurobiology, Care Sciences, and Society, Karolinska Institutet, Stockholm, Sweden; Division of Insurance Medicine, Department of Clinical Neuroscience, Karolinska Institutet, Stockholm, Sweden	Drafting/revision of the manuscript for content, including medical writing for content, and analysis or interpretation of data
Joana B. Pereira, PhD	Division of Clinical Geriatrics, Centre for Alzheimer Research, Department of Neurobiology, Care Sciences, and Society, Karolinska Institutet, Stockholm, Sweden; Clinical Memory Research Unit, Department of Clinical Sciences, Lund University, Malmö, Sweden	Drafting/revision of the manuscript for content, including medical writing for content, and analysis or interpretation of data

Appendix (continued)

Name	Location	Contribution
Sara Shams, PhD	Division of Clinical Geriatrics, Centre for Alzheimer Research, Department of Neurobiology, Care Sciences, and Society, Karolinska Institutet, Stockholm, Sweden	Analysis or interpretation of data
Lars-Olof Wahlund, PhD	Division of Clinical Geriatrics, Centre for Alzheimer Research, Department of Neurobiology, Care Sciences, and Society, Karolinska Institutet, Stockholm, Sweden	Drafting/revision of the manuscript for content, including medical writing for content, and study concept or design
Anna Zettergren, PhD	Region Västra Götaland, Sahlgrenska University Hospital, Department of Psychiatry Cognition and Old Age Psychiatry, Gothenburg, Sweden; Neuropsychiatric Epidemiology Unit, Department of Psychiatry and Neurochemistry, Institute of Neuroscience and Physiology, the Sahlgrenska Academy, Centre for Ageing and Health (AGECAP) at the University of Gothenburg, Gothenburg, Sweden	Drafting/revision of the manuscript for content, including medical writing for content, and major role in the acquisition of data
Olga Stepankova, PhD	Czech Institute of Informatics, Robotics, and Cybernetics, Czech Technical University, Prague, Czech Republic	Drafting/revision of the manuscript for content, including medical writing for content, and study concept or design
Lenka Vyslouzilova, PhD	Czech Institute of Informatics, Robotics, and Cybernetics, Czech Technical University, Prague, Czech Republic	Drafting/revision of the manuscript for content, including medical writing for content, and study concept or design
Maria Eriksson, PhD	Division of Clinical Geriatrics, Centre for Alzheimer Research, Department of Neurobiology, Care Sciences, and Society, Karolinska Institutet, Stockholm, Sweden; Theme Inflammation and aging, Karolinska University Hospital, Huddinge, Sweden	Drafting/revision of the manuscript for content, including medical writing for content, and study concept or design
Stefan Teipel, MD	Clinical Dementia Research Section, Department of Psychosomatic Medicine, University Medicine Rostock, Rostock, Germany; German Center for Neurodegenerative Diseases (DZNE), Rostock, Germany	Drafting/revision of the manuscript for content, including medical writing for content, and study concept or design
Michel J. Grothe, PhD	German Center for Neurodegenerative Diseases (DZNE), Rostock, Germany; Unidad de Trastornos del Movimiento, Servicio de Neurología y Neurofisiología Clínica, Instituto de Biomedicina de Sevilla (IBiS), Hospital Universitario Virgen del Rocío/CSIC/Universidad de Sevilla, Seville, Spain	Drafting/revision of the manuscript for content, including medical writing for content, and study concept or design

Appendix (continued)

Name	Location	Contribution
Kaj Blennow, MD, PhD	Neuropsychiatric Epidemiology Unit, Department of Psychiatry and Neurochemistry, Institute of Neuroscience and Physiology, the Sahlgrenska Academy, Centre for Ageing and Health (AGECAP) at the University of Gothenburg, Gothenburg, Sweden; Clinical Neurochemistry Laboratory, Sahlgrenska University Hospital, Sweden	Drafting/revision of the manuscript for content, including medical writing for content, and major role in the acquisition of data
Henrik Zetterberg, MD, PhD	Neuropsychiatric Epidemiology Unit, Department of Psychiatry and Neurochemistry, Institute of Neuroscience and Physiology, the Sahlgrenska Academy, Centre for Ageing and Health (AGECAP) at the University of Gothenburg, Gothenburg, Sweden; Clinical Neurochemistry Laboratory, Sahlgrenska University Hospital, Sweden; Department of Neurodegenerative Disease, UCL Institute of Neurology, London, United Kingdom; UK Dementia Research Institute at UCL, London, United Kingdom; Hong Kong Center for Neurodegenerative Diseases, Hong Kong, China	Drafting/revision of the manuscript for content, including medical writing for content, and major role in the acquisition of data
Michael Schöll, PhD	Wallenberg Centre for Molecular and Translational Medicine, University of Gothenburg, Gothenburg, Sweden; Department of Psychiatry and Neurochemistry, Institute of Physiology and Neuroscience, University of Gothenburg, Gothenburg, Sweden; Dementia Research Centre, Institute of Neurology, University College London, London, UK; Department of Clinical Physiology, Sahlgrenska University Hospital, Gothenburg, Sweden	Drafting/revision of the manuscript for content, including medical writing for content, and major role in the acquisition of data
Silke Kern, PhD	Region Västra Götaland, Sahlgrenska University Hospital, Department of Psychiatry Cognition and Old Age Psychiatry, Gothenburg, Sweden; Neuropsychiatric Epidemiology Unit, Department of Psychiatry and Neurochemistry, Institute of Neuroscience and Physiology, the Sahlgrenska Academy, Centre for Ageing and Health (AGECAP) at the University of Gothenburg, Gothenburg, Sweden	Drafting/revision of the manuscript for content, including medical writing for content, and major role in the acquisition of data

Continued

Appendix (continued)

Name	Location	Contribution
Ingmar Skoog, MD, PhD	Region Västra Götaland, Sahlgrenska University Hospital, Department of Psychiatry Cognition and Old Age Psychiatry, Gothenburg, Sweden; Neuropsychiatric Epidemiology Unit, Department of Psychiatry and Neurochemistry, Institute of Neuroscience and Physiology, the Sahlgrenska Academy, Centre for Ageing and Health (AGECAP) at the University of Gothenburg, Gothenburg, Sweden	Drafting/revision of the manuscript for content, including medical writing for content, and major role in the acquisition of data
Eric Westman, PhD	Division of Clinical Geriatrics, Centre for Alzheimer Research, Department of Neurobiology, Care Sciences, and Society, Karolinska Institutet, Stockholm, Sweden; Department of Neuroimaging Sciences, Institute of Psychiatry, Psychology and Neuroscience, King's College London, London, UK	Drafting/revision of the manuscript for content, including medical writing for content; study concept or design; and analysis or interpretation of data

References

- Mesulam M-M. Cholinergic circuitry of the human nucleus basalis and its fate in Alzheimer's disease. *J Comp Neurol*. 2013;521(18):4124-4144. doi:wiley.com/10.1002/cne.23415.
- Herdick M, Dyrba M, Fritz H-CJ, et al. Multimodal MRI analysis of basal forebrain structure and function across the Alzheimer's disease spectrum. *Neuroimage Clin*. 2020;28:102495. doi.org/10.1016/j.nicl.2020.102495.
- Fritz HCJ, Ray N, Dyrba M, Sorg C, Teipel S, Grothe MJ. The corticostriatal organization of the human basal forebrain as revealed by regionally selective functional connectivity profiles. *Hum Brain Mapp*. 2019;40(3):868-878.
- Nemy M, Cedres N, Grothe MJ, et al. Cholinergic white matter pathways make a stronger contribution to attention and memory in normal aging than cerebrovascular health and nucleus basalis of Meynert. *Neuroimage*. 2020;211:116607.
- Teipel SJ, Meindl T, Grinberg L, et al. The cholinergic system in mild cognitive impairment and Alzheimer's disease: an in vivo MRI and DTI study. *Hum Brain Mapp*. 2011;32(9):1349-1362.
- Cedres N, Ferreira D, Machado A, et al. Predicting Fazekas scores from automatic segmentations of white matter signal abnormalities. *Aging (Albany NY)*. 2020;12(1):894-901. aging-us.com/article/102662/text.
- Rydberg Sterner T, Ahlner F, Blennow K, et al. The Gothenburg H70 Birth cohort study 2014-16: design, methods and study population. *Eur J Epidemiol*. 2019;34(2):191-209. link.springer.com/10.1007/s10654-018-0459-8.
- Fischl B, Salat DH, Busa E, et al. Whole brain segmentation: automated labeling of neuroanatomical structures in the human brain. *Neuron*. 2002;33(3):341-355.
- Schmidt P, Gaser C, Arsic M, et al. An automated tool for detection of FLAIR-hyperintense white-matter lesions in Multiple Sclerosis. *Neuroimage*. 2012;59(4):3774-3783. dx.doi.org/10.1016/j.neuroimage.2011.11.032.
- Riphagen JM, Gronenschild EHB, Salat DH, et al. Shades of white: diffusion properties of T1- and FLAIR-defined white matter signal abnormalities differ in stages from cognitively normal to dementia. *Neurobiol Aging*. 2018;68:48-58. linkinghub.elsevier.com/retrieve/pii/S0197458018301180.
- Olsson E, Klasson N, Berge J, et al. White matter lesion assessment in patients with cognitive impairment and healthy controls: reliability comparisons between visual rating, a manual, and an automatic volumetric MRI method—the gothenburg MCI study. *J Aging Res*. 2013;2013:198471.
- Muehlboeck J-S, Westman E, Simmons A. TheHiveDB image data management and analysis framework. *Front Neuroinform*. 2014;7:49-13. journal.frontiersin.org/article/10.3389/fninf.2013.00049/abstract.
- Voevodskaya O. The effects of intracranial volume adjustment approaches on multiple regional MRI volumes in healthy aging and Alzheimer's disease. *Front Aging Neurosci*. 2014;6:1-14.
- Avants BB, Epstein CL, Grossman M, Gee JC. Symmetric diffeomorphic image registration with cross-correlation: evaluating automated labeling of elderly and neurodegenerative brain. *Med Image Anal*. 2008;12(1):26-41. ncbi.nlm.nih.gov/pmc/articles/PMC3624763/pdf/nihms412728.pdf.

- Avants BB, Yushkevich P, Pluta J, Minkoff D, Korczynowski M, Detre J, Gee JC. The optimal template effect in hippocampus studies of diseased populations. *Neuroimage*. 2010;49(3):2457-66. doi: 10.1016/j.neuroimage.2009.09.062.
- Smith S.M, Jenkinson M, Woolrich M.W, Beckmann CF, Behrens T.E.J, Johansen-Berg H, et al. Advances in functional and structural MR image analysis and implementation as FSL. *Neuroimage*. 2004;23(S1):208-19.
- Dauguet J, Peled S, Berezovskii V, et al. Comparison of fiber tracts derived from in-vivo DTI tractography with 3D histological neural tract reconstruction on a macaque brain. *Neuroimage*. 2007;37(2):530-538. sciencedirect.com/science/article/pii/S105381190700328X.
- Badji A, Pereira JB, Shams S, et al. Cerebrospinal fluid biomarkers, brain structural and cognitive performances between normotensive and hypertensive controlled, uncontrolled and untreated 70-year-old adults. *Front Aging Neurosci*. 2021;13:777475.
- Rydén L, Sacuiu S, Wetterberg H, et al. Atrial fibrillation, stroke, and silent cerebrovascular disease: a population-based MRI study. *Neurology*. 2021;97(16):E1608-E1619.
- Wardlaw JM, Smith EE, Biessels GJ, et al. Standards for Reporting Vascular Changes on Neuroimaging STRIVE v1. Neuroimaging standards for research into small vessel disease and its contribution to ageing and neurodegeneration. *Lancet Neurol*. 2013;12(8):822-838. ncbi.nlm.nih.gov/pubmed/23867200.
- Hansson O, Lehmann S, Otto M, Zetterberg H, Lewczuk P. Advantages and disadvantages of the use of the CSF Amyloid β (A β) 42/40 ratio in the diagnosis of Alzheimer's Disease. *Alzheimers Res Ther*. 2019;11:1-15.
- Kern S, Zetterberg H, Zettergren A, et al. The prevalence of preclinical Alzheimer's disease in a population study of 70-year-olds. *Alzheimers Dement*. 2017;13:P848. linkinghub.elsevier.com/retrieve/pii/S1552526017143279.
- Wiltfang J, Esselmann H, Bibl M, et al. Highly conserved and disease-specific patterns of carboxyterminally truncated Abeta peptides 1-37/38/39 in addition to 1-40/42 in Alzheimer's disease and in patients with chronic neuroinflammation. *J Neurochem*. 2002;81(3):481-496.
- Reinert J, Martens H, Huettenrauch M, et al. A β 38 in the brains of patients with sporadic and familial Alzheimer's disease and transgenic mouse models. *J Alzheimers Dis*. 2014;39(4):871-881.
- Heywood WE, Hallqvist J, Heslegrave AJ, et al. CSF pro-orexin and amyloid- β 38 expression in Alzheimer's disease and frontotemporal dementia. *Neurobiol Aging*. 2018;72:171-176. doi.org/10.1016/j.neurobiolaging.2018.08.019.
- Mulugeta E, Londo E, Ballard C, et al. CSF amyloid β 38 as a novel diagnostic marker for dementia with Lewy bodies. *J Neurol Neurosurg Psychiatry*. 2011;82(2):160-164.
- Van Steenoven I, Van Der Flier WM, Scheltens P, Teunissen CE, Lemstra AW. Amyloid- β peptides in cerebrospinal fluid of patients with dementia with Lewy bodies. *Alzheimers Res Ther*. 2019;11:8-10.
- R Core Team. *R: A language and environment for statistical computing*. R Foundation for Statistical Computing, Vienna, Austria. 2022. https://www.R-project.org/.
- Breiman L. Bagging predictions. *Mach Learn*. 1996;24:123-140.
- Breiman L. Random forests. *Mach Learn*. 2001;45(1):5-32.
- Cedres N, Diaz-Galvan P, Diaz-Flores L, et al. The interplay between gray matter and white matter neurodegeneration in subjective cognitive decline. *Aging (Albany NY)*. 2021;13(16):19963-19977.
- Liaw AL, Wiener M. Classification and regression by randomForest. *R News* 2. 2003;3:18-22.
- Hothorn T, Hornik K, Strobl C, Zeileis A. *party: A Laboratory for Recursive Party-tioning. R Package Version 09-0*. 2015:37. http://CRAN.R-project.org/party.r-project.org/.
- Dumas JA, Kutz AM, McDonald BC, et al. Aged women with cognitive complaints. *Neurobiol Aging*. 2014;34:1145-1147.
- Contestabile A. The history of the cholinergic hypothesis. *Behav Brain Res*. 2011;221(2):334-340. dx.doi.org/10.1016/j.bbr.2009.12.044.
- Benedictus MR, Van Harten AC, Leeuw AE, et al. White matter hyperintensities relate to clinical progression in subjective cognitive decline. *Stroke*. 2015;46(9):2661-2664.
- Lindberg O, Kern S, Skoog J, et al. Effects of amyloid pathology and the APOE ϵ 4 allele on the association between cerebrospinal fluid A β 38 and A β 40 and brain morphology in cognitively normal 70-years-old. *Neurobiol Aging*. 2021;101:1-12.
- Bibl M, Mollenhauer B, Lewczuk P, et al. Cerebrospinal fluid tau, p-tau 181 and amyloid- β 38/40/42 in frontotemporal dementias and primary progressive aphasia. *Dement Geriatr Cogn Disord*. 2011;31:37-44. karger.com/DOI/10.1159/000322370.
- Hilal S, Akoudad S, Van Duijn CM, et al. Plasma amyloid- β levels, cerebral small vessel disease, and cognition: The Rotterdam study. *J Alzheimers Dis*. 2017;60(3):977-987.
- Cullen N, Janelidze S, Palmqvist S, Stomrud E, Mattsson-Carlgren N, Hansson O, Alzheimer's Disease Neuroimaging Initiative. Association of CSF A β 38 levels with risk of Alzheimer disease-related decline. *Neurology*. 2022;98(9):e958-e967. doi: 10.1212/WNL.0000000000003228.
- Hadland KA, Rushworth MFS, Gaffan D, Passingham RE. The effect of cingulate lesions on social behaviour and emotion. *Neuropsychologia*. 2003;41(8):919-931.
- de Leeuw FE, de Groot JC, Achten E, et al. Prevalence of cerebral white matter lesions in elderly people: a population based magnetic resonance imaging study. The Rotterdam Scan Study. *J Neurol Neurosurg Psychiatry*. 2001;70(1):9-14. ncbi.nlm.nih.gov/pubmed/11118237.
- Bohnen NI, Müller MLTM, Kuwabara H, Constantine GM, Studenski SA. Age-associated leukoaraiosis and cortical cholinergic deafferentation. *Neurology*. 2009;72(16):1411-1416.

44. Miller A-M, Balasa M, Blennow K, et al. Current approaches and clinician attitudes to the use of cerebrospinal fluid biomarkers in diagnostic evaluation of dementia in Europe. *J Alzheimers Dis.* 2017;60(1):201-210.
45. McAleese KE, Firbank M, Dey M, et al. Cortical tau load is associated with white matter hyperintensities. *Acta Neuropathologica Commun.* 2015;3:60. doi.org/10.1186/s40478-015-0240-0.
46. Kim SH, Kang HS, Kim HJ, et al. The effect of ischemic cholinergic damage on cognition in patients with subcortical vascular cognitive impairment. *J Geriatr Psychiatry Neurol.* 2012;25(2):122-127. doi.org/10.1177/0891988712445089.
47. Behl P, Bocti C, Swartz RH, et al. Strategic subcortical hyperintensities in cholinergic pathways and executive function decline in treated Alzheimer patients. *Arch Neurol.* 2007;64(2):266-272.

Neurology[®]

Association of Cerebrovascular and Alzheimer Disease Biomarkers With Cholinergic White Matter Degeneration in Cognitively Unimpaired Individuals

Nira Cedres, Daniel Ferreira, Milan Nemy, et al.

Neurology 2022;99:e1619-e1629 Published Online before print August 2, 2022

DOI 10.1212/WNL.0000000000200930

This information is current as of August 2, 2022

Updated Information & Services	including high resolution figures, can be found at: http://n.neurology.org/content/99/15/e1619.full
References	This article cites 45 articles, 5 of which you can access for free at: http://n.neurology.org/content/99/15/e1619.full#ref-list-1
Subspecialty Collections	This article, along with others on similar topics, appears in the following collection(s): All Cerebrovascular disease/Stroke http://n.neurology.org/cgi/collection/all_cerebrovascular_disease_stroke All Cognitive Disorders/Dementia http://n.neurology.org/cgi/collection/all_cognitive_disorders_dementia All Imaging http://n.neurology.org/cgi/collection/all_imaging Alzheimer disease http://n.neurology.org/cgi/collection/alzheimers_disease Cohort studies http://n.neurology.org/cgi/collection/cohort_studies
Permissions & Licensing	Information about reproducing this article in parts (figures, tables) or in its entirety can be found online at: http://www.neurology.org/about/about_the_journal#permissions
Reprints	Information about ordering reprints can be found online: http://n.neurology.org/subscribers/advertise

Neurology® is the official journal of the American Academy of Neurology. Published continuously since 1951, it is now a weekly with 48 issues per year. Copyright © 2022 The Author(s). Published by Wolters Kluwer Health, Inc. on behalf of the American Academy of Neurology. All rights reserved. Print ISSN: 0028-3878. Online ISSN: 1526-632X.

