

OPEN

Neurology[®]

The most widely read and highly cited peer-reviewed neurology journal
The Official Journal of the American Academy of Neurology



Neurology Publish Ahead of Print
DOI: 10.1212/WNL.000000000200335

Association Between EEG Patterns and Serum Neurofilament Light After Cardiac Arrest: A Post Hoc Analysis of the TTM Trial

Author(s):

Linnéa Grindegård, MD¹; Tobias Cronberg, MD, PhD¹; Sofia Backman, MD, PhD²; Kaj Blennow, MD, PhD^{3,4}; Josef Dankiewicz, MD, PhD⁵; Hans Friberg, MD, PhD⁶; Christian Hassager, MD, PhD⁷; Janneke Horn, MD, PhD⁸; Troels W Kjaer, MD, PhD⁹; Jesper Kjaergaard, MD, PhD¹⁰; Michael Kuiper, MD, PhD¹¹; Niklas Mattsson-Carlsson, MD, PhD^{1,12,13}; Niklas Nielsen, MD, PhD¹⁴; Anne-Fleur van Rootselaar, MD, PhD¹⁵; Andrea Rossetti, MD, FAES¹⁶; Pascal Stammet, MD, PhD^{17,18}; Susann Ullén, MS, PhD¹⁹; Henrik Zetterberg, MD, PhD^{3,4,20,21,22}; Erik Westhall, MD, PhD²; Marion Moseby-Knappe, MD, PhD¹

This is an open access article distributed under the terms of the Creative Commons Attribution License 4.0 (CC BY), which permits unrestricted use, distribution, and reproduction in any medium, provided the original work is properly cited.

Neurology[®] Published Ahead of Print articles have been peer reviewed and accepted for publication. This manuscript will be published in its final form after copyediting, page composition, and review of proofs. Errors that could affect the content may be corrected during these processes.

Corresponding Author:

Linnéa Grindegård, linnea.grindegard@med.lu.se

Affiliation Information for All Authors: 1. Department of Clinical Sciences Lund, Neurology, Lund University, Skåne University Hospital, Lund, Sweden; 2. Department of Clinical Sciences Lund, Clinical Neurophysiology, Lund University, Skåne University Hospital, Lund, Sweden; 3. Department of Psychiatry and Neurochemistry, Institute of Neuroscience and Physiology, The Sahlgrenska Academy, University of Gothenburg, Mölndal, Sweden; 4. Clinical Neurochemistry Laboratory, Sahlgrenska University Hospital, Mölndal, Sweden; 5. Department of Clinical Sciences Lund, Cardiology, Lund University, Skåne University Hospital, Lund, Sweden; 6. Department of Clinical Sciences Lund, Anaesthesia and Intensive Care, Skåne University Hospital, Lund University, Malmö, Sweden; 7. Department of Cardiology, Rigshospitalet and Department of Clinical Medicine, University of Copenhagen, Copenhagen, Denmark; 8. Department of Intensive Care, Amsterdam Neuroscience, Amsterdam UMC, Location Academic Medical Center, Amsterdam, The Netherlands; 9. Department of Clinical Neurophysiology, Rigshospitalet University Hospital, Copenhagen, Denmark; 10. Department of Cardiology, Rigshospitalet University Hospital, Copenhagen, Denmark; 11. Department of Intensive Care, Medical Center Leeuwarden, Leeuwarden, the Netherlands; 12. Clinical Memory Research Unit, Faculty of Medicine, Lund University, Lund, Sweden; 13. Wallenberg Centre for Molecular Medicine, Lund University; 14. Department of Clinical Sciences Lund, Anaesthesia and Intensive Care, Lund University, Helsingborg Hospital, Lund, Sweden; 15. Department of Neurology/Clinical Neurophysiology, Amsterdam UMC, University of Amsterdam, Amsterdam Neuroscience, The Netherlands; 16. Department of Neurology, CHUV and University of Lausanne, Lausanne, Switzerland; 17. Department of Anesthesia and Intensive Care, Centre Hospitalier de Luxembourg, Luxembourg; 18. Department of Life sciences and medicine, Faculty of science, technology and medicine, University of Luxembourg, Luxembourg; 19. Clinical Studies Sweden, Skåne University Hospital, Lund, Sweden; 20. Department of Neurodegenerative Disease, UCL Institute of Neurology, London, UK; 21. UK Dementia Research Institute at UCL, London; 22. Hong Kong Center for Neurodegenerative Diseases, Hong Kong, China.

Equal Author Contribution:

These authors contributed equally to this work: Erik Westhall and Marion Moseby-Knappe.

Contributions:

Linnéa Grindegård: Drafting/revision of the manuscript for content, including medical writing for content; Study concept or design; Analysis or interpretation of data

Tobias Cronberg: Drafting/revision of the manuscript for content, including medical writing for content; Major role in the acquisition of data; Study concept or design; Analysis or interpretation of data

Sofia Backman: Drafting/revision of the manuscript for content, including medical writing for content; Major role in the acquisition of data; Study concept or design; Analysis or interpretation of data

Kaj Blennow: Drafting/revision of the manuscript for content, including medical writing for content; Major role in the acquisition of data; Study concept or design; Analysis or interpretation of data

Josef Dankiewicz: Drafting/revision of the manuscript for content, including medical writing for content; Major role in the acquisition of data; Analysis or interpretation of data

Hans Friberg: Drafting/revision of the manuscript for content, including medical writing for content; Major role in the acquisition of data; Study concept or design; Analysis or interpretation of data

Christian Hassager: Drafting/revision of the manuscript for content, including medical writing for content; Major role in the acquisition of data; Analysis or interpretation of data

Janneke Horn: Drafting/revision of the manuscript for content, including medical writing for content; Major role in the acquisition of data; Analysis or interpretation of data

Troels W Kjaer: Drafting/revision of the manuscript for content, including medical writing for content; Major role in the acquisition of data; Analysis or interpretation of data

Jesper Kjaergaard: Drafting/revision of the manuscript for content, including medical writing for content; Major role in the acquisition of data; Analysis or interpretation of data

Michael Kuiper: Drafting/revision of the manuscript for content, including medical writing for content; Major role in the acquisition of data; Analysis or interpretation of data

Niklas Mattsson-Carlsson: Drafting/revision of the manuscript for content, including medical writing for content; Analysis or interpretation of data

Niklas Nielsen: Drafting/revision of the manuscript for content, including medical writing for content; Major role in the acquisition of data; Study concept or design; Analysis or interpretation of data

Anne-Fleur van Rootselaar: Drafting/revision of the manuscript for content, including medical writing for content; Major role in the acquisition of data; Analysis or interpretation of data

Andrea Rossetti: Drafting/revision of the manuscript for content, including medical writing for content; Major role in the acquisition of data; Analysis or interpretation of data

Pascal Stammet: Drafting/revision of the manuscript for content, including medical writing for content; Major role in the acquisition of data; Analysis or interpretation of data

Susann Ullén: Drafting/revision of the manuscript for content, including medical writing for content; Study concept or design; Analysis or interpretation of data
Henrik Zetterberg: Drafting/revision of the manuscript for content, including medical writing for content; Major role in the acquisition of data; Analysis or interpretation of data
Erik Westhall: Drafting/revision of the manuscript for content, including medical writing for content; Major role in the acquisition of data; Study concept or design; Analysis or interpretation of data
Marion Moseby-Knappe: Drafting/revision of the manuscript for content, including medical writing for content; Major role in the acquisition of data; Study concept or design; Analysis or interpretation of data

Figure Count:

5

Table Count:

2

Search Terms:

[290] Cardiac, [17] Prognosis, [18] Coma, [284] EEG; see Epilepsy/Seizures (S), Neurofilament

Acknowledgment:

The authors would like to thank the TTM-trial investigators, the Integrated Biobank of Luxembourg, the Clinical Neurochemistry Laboratory in Mölndal, Sweden, and the sites that contributed both routine EEGs and NFL-data: General University Hospital in Prague, Prague, Czech Republic; Copenhagen University Hospital Rigshospitalet, Copenhagen, Denmark; IRCCS San Martino IST, Genoa, Italy; Santa Maria degli Angeli Hospital, Pordenone, Italy; Ospedale Universitario di Cattinara, Trieste, Italy; Medical Centre, Luxembourg, Luxembourg; AMC Amsterdam, Amsterdam, Netherlands; Leeuwarden Hospital, Leeuwarden, Netherlands; Helsingborg Hospital, Helsingborg, Sweden; Linköping University Hospital, Linköping, Sweden; Skåne University Hospital, Lund, Sweden; Skåne University Hospital, Malmö, Sweden; Örebro University Hospital, Örebro, Sweden; Hospital La Chaux de Fonds, La Chaux de Fonds, Switzerland; Geneva University Hospital, Geneva, Switzerland; Hospital St Gallen, St Gallen, Switzerland; Royal Berkshire Hospital, Reading, United Kingdom; Royal Bournemouth Hospital, Bournemouth, United Kingdom; University Hospital of Wales, Cardiff, United Kingdom; Guy's and St Thomas NHS Trust, London, United Kingdom; St George's Hospital, London, United Kingdom.

Study Funding:

Funding for the study was provided by the Swedish Research Council; Swedish Heart Lung Foundation; Arbetsmarknadens Försäkringsaktiebolag Insurance Foundation; the Skåne University Hospital Foundations; the Gyllenstierna-Krapperup Foundation; governmental funding of clinical research within the Swedish National Health System, the County Council of Skåne; the Swedish Society of Medicine; the Koch Foundation; TrygFonden (Denmark); European Clinical Research Infrastructures Network; Thelma Zoega Foundation; Stig and Ragna Gorthon Foundation; Thure Carlsson Foundation; Hans-Gabriel and Alice Trolle-Wachtmeister Foundation for Medical Research; Lions Research fund Skåne; South Swedish Hospital Region Research Funds; the Swedish Brain Foundation; the Lundbeck Foundation; and the Torsten Söderberg foundation at the Royal Swedish Academy of Sciences. HZ is a Wallenberg Scholar. NMC is a Wallenberg Molecular Medicine Fellow. The funding organizations had no role in the design and conduct of the study or in the decision to submit the manuscript for publication.

Disclosures:

H. Zetterberg has served at scientific advisory boards for Alector, Eisai, Denali, Roche Diagnostics, Wave, Samumed, Siemens Healthineers, Pinteon Therapeutics, Nervgen, AZTherapies and CogRx, has given lectures in symposia sponsored by Cellectricon, Fujirebio, Alzecure and Biogen, and is a co-founder of Brain Biomarker Solutions in Gothenburg AB (BBS), which is a part of the GU Ventures Incubator Program (outside submitted work); K. Blennow has served as a consultant, at advisory boards, or at data monitoring committees for Abcam, Axon, Biogen, JOMDD/Shimadzu, Julius Clinical, Lilly, MagQu, Novartis, Prothena, Roche Diagnostics, and Siemens Healthineers, and is a co-founder of Brain Biomarker Solutions in Gothenburg AB (BBS), which is a part of the GU Ventures Incubator Program (outside the work presented in this paper); H. Friberg is a medical advisor for TEQCool; the remaining authors report no disclosures relevant to the manuscript.

Preprint DOI:

Received Date:

2021-07-01 00:00:00.000

Accepted Date:

2022-02-21 00:00:00.000

Handling Editor Statement:

ABSTRACT

Background and objectives

Electroencephalography (EEG) is widely used for prediction of neurological outcome after cardiac arrest. To better understand the relationship between EEG and neuronal injury, we explore the association between EEG and neurofilament light (NFL) as a marker of neuroaxonal injury. We evaluate whether highly malignant EEG patterns are reflected by high NFL levels. Additionally, we explore the association of EEG backgrounds and EEG discharges with NFL.

Methods

Post-hoc analysis of the Target Temperature Management after out-of-hospital cardiac arrest (TTM)-trial. Routine EEGs were prospectively performed after the temperature intervention ≥ 36 hours post-arrest. Patients who awoke or died prior to 36 hours post-arrest were excluded. EEG-experts blinded to clinical information classified EEG background, amount of discharges and highly malignant EEG patterns according to the standardized American Clinical Neurophysiology Society terminology. Prospectively collected serum samples were analyzed for NFL after trial completion. The highest available concentration at 48 or 72-hours post-arrest was used.

Results

262/939 patients with EEG and NFL data were included. Patients with highly malignant EEG patterns had 2.9 times higher NFL levels than patients with malignant patterns and NFL levels were 13 times higher in patients with malignant patterns than those with benign patterns (95% CI: 1.4-6.1 and 6.5-26.2 respectively, effect size 0.47, $p < 0.001$). Both background and the amount of discharges were independently strongly associated with NFL levels ($p < 0.001$). The EEG background had a stronger association with NFL levels than EEG discharges ($R^2 = 0.30$ and $R^2 = 0.10$, respectively). NFL levels in patients with a continuous background were lower than for any other background (95% CI for discontinuous, burst-suppression and suppression, respectively: 2.26-18.06, 3.91-41.71 and 5.74-41.74, effect size 0.30 and $p < 0.001$ for all). NFL levels did not differ between suppression and burst-suppression. Superimposed discharges were only associated with higher NFL levels if the EEG background was continuous.

Discussion

Benign, malignant, and highly malignant EEG patterns reflect the extent of brain injury as measured by NFL in serum. The extent of brain injury is more strongly related to the EEG background than superimposed discharges. Combining EEG and NFL may be useful to better identify patients misclassified by single methods.

Clinical Trials Registration Number: clinicaltrials.gov, NCT01020916

INTRODUCTION

Electroencephalography (EEG) is the most commonly used method for predicting neurological outcome after cardiac arrest (CA).¹ Within seconds of circulatory arrest, the EEG becomes suppressed and after return of circulation, if recovery occurs, neuronal activity progresses gradually from a suppressed to a more continuous background.^{2, 3} The specific time point of EEG examination is therefore considered crucial for its prognostic relevance. An early recovery of a continuous and normal voltage background within the first 12-24 hours is associated with good neurological outcome.⁴⁻⁶

A classification of EEG patterns into benign, malignant, and highly malignant was proposed based on the terminology from the American Clinical Neurophysiology Society (ACNS).^{7, 8} This classification concerns routine EEGs obtained after the first 36 hours post-arrest. It has been externally validated and found to predict neurological outcome after CA with high specificity and substantial interrater reliability.^{4, 9, 10} Two background patterns are considered highly malignant; suppression (all EEG activity $<10\mu\text{V}$) and burst-suppression (suppression periods alternate with bursts of cortical activity).^{7, 10} Any one of these background patterns ≥ 24 hours after CA, regardless of the presence of discharges, are considered strong predictors of poor neurological outcome according to recent guidelines.^{11, 12}

The presence of abundant rhythmic/periodic discharges is considered a criterion of a malignant EEG and outcome is often poor.^{7, 10} Discharges may reflect severe ischemic damage and antiepileptic treatment might not improve outcome.¹³ In a number of patients, however, neuronal injury is less extensive and anticonvulsant treatment may be beneficial.¹⁴

Studies for prediction of neurological outcome often permit clinical decision-making based on the results from the same examinations, and the risk of self-fulfilling prophecies cannot be excluded. In contrast, highly sensitive blood biomarkers for brain injury has been used as surrogate markers in clinical studies.^{15, 16} Brain injury markers have the advantage of being objective and quantitative indicators, especially if not being available upon clinical

decision-making. The most accurate blood biomarker of brain injury after CA described to date is the neuroaxonal injury marker neurofilament light (NFL), which is superior to S100B, neuron-specific enolase (NSE) and tau.^{17, 18} As of yet, analysis of NFL is not standardized nor do validated cut-off values exist for its use in neuroprognostication after CA. Nonetheless, using an early quantitative measure such as NFL levels as a surrogate marker for neuroaxonal injury could give unique insights into whether EEG abnormality is directly associated with brain injury and not only neurological outcome which may be biased by self-fulfilling prophecies.

We hypothesized that the hierarchy of benign, malignant, and highly malignant EEG patterns is reflected by increasing NFL levels as a measure of acute brain injury after CA. We further explored associations between NFL and two fundamental elements of the EEG: background and superimposed discharges. Based on the prognostic accuracies of the highly malignant pattern to predict poor outcome after CA, we hypothesized that the EEG background is more strongly associated with brain injury than EEG discharges.

METHODS

Patients

This is a post-hoc analysis of the Target Temperature Management after out-of-hospital cardiac arrest (TTM)-trial, an international multicenter trial randomizing patients ≥ 18 years with CA of a presumed cardiac origin to a temperature control intervention of either 33°C or 36°C as previously published (clinicaltrials.gov, NCT01020916).^{19, 20} Nine hundred and thirty-nine patients were included in the modified intention-to-treat population.¹⁹ Detailed information on neurological prognostication and decisions on level-of-care have been previously reported.²¹⁻²³ Neurological outcome was assessed at 6 months post-arrest according to the Cerebral Performance Category Scale (CPC). Poor outcome was defined as

CPC 3-5 (severe cerebral disability, vegetative state, or death). The presence of any clinical seizures was prospectively documented by the treating physician.²⁴

Standard protocol approvals, registrations, and patient consents

The protocol of the trial was approved by the ethics committees in the participating countries (ClinicalTrials.gov, NCT01020916) *in accordance with national requirements and the principles of the Declaration of Helsinki.*^{19, 25, 26} *A list of participating sites and ethics approvals for each country has been previously published.*¹⁹ *Inclusion in the study was considered an emergency procedure due to the time sensitive intervention studied. Participants in the study were per eligibility criteria unconscious at the time of inclusion and could therefore not consent to inclusion. Consent from a legal surrogate was obtained as soon as possible or was waived (next-of-kin only informed about the trial) as per decision of the Ethics committees in each country. Written informed consent was obtained as soon as possible from all participants who regained mental capacity.*¹⁹

NFL biomarker measurements

Within the TTM-trial, 29/36 trial sites prospectively collected serum samples at 24, 48 and 72 h after return of spontaneous circulation (ROSC), which were subsequently frozen and stored in a central biobank.²⁷ In this study, the highest level of NFL at 48 or 72 h (peak-NFL) was used for the analyses since median NFL concentrations were twice as high at 48-72 h post-arrest compared to 24 h.¹⁷ Serum NFL concentrations were measured using an in-house ultrasensitive Single molecule array (Simoa) assay on an HD-1 Analyzer (Quanterix, Billerica, MA). The measurements were performed after trial completion in one round of experiments using one batch of reagents by board-certified laboratory technicians who were

blinded to clinical data.¹⁷ The results were not part of the prognostication algorithm used to guide patient management.

EEG procedures

Full montage routine EEGs were prospectively recorded in patients who were still comatose after the 36 hours temperature control intervention as previously reported and a local interpretation was available to the treating physician.^{7, 10, 28} EEG was mandated as part of the neurologic evaluation in patients still unconscious after the temperature intervention. Patients who died or were awake and following commands prior to neuroprognostication were excluded from this study. After study completion, EEGs were collected to a central database and reviewed systematically by blinded investigators. EEG patterns were classified according to the grading system described by Westhall *et al*⁷. using the standardized ACNS terminology.^{7, 8, 10} Benign EEG - continuous or nearly continuous background without malignant features mentioned below

- Malignant EEG – discontinuous background, reversed antero-posterior gradient or low-voltage background, abundant ($\geq 50\%$ of the recording) rhythmic or periodic discharges or unequivocal seizures
- Highly malignant EEG - burst-suppression or suppression background with or without discharges

Background activity was categorized into four groups according to continuity:

- Continuous or nearly continuous background (suppression periods $< 10\%$)
- Discontinuous background (suppression periods $10 - < 50\%$)
- Burst-suppression background (suppression periods $\geq 50\%$)
- Suppressed background (all background activity suppressed $< 10\mu V$)

The amount of electrographic discharges was categorized into three groups:

- None/Rare - defined as no discharges or rare rhythmic/periodic discharges (<1% of the recording) or sporadic epileptiform discharges <1/10s
- Intermediate – defined as occasional to frequent rhythmic/periodic discharges (1- <50% of the recording) or sporadic epileptiform discharges >1/10s
- Abundant - defined as abundant to continuous rhythmic/periodic discharges (≥50% of the recording) or at least one unequivocal electrographic seizure.

Statistical analysis

Variables are presented in numbers, percentages, and median values where applicable. For all statistical analyses, peak-NFL values were log₁₀-transformed. One-way ANOVA was used for the tests of associations between NFL levels and different EEG features. T-tests and one-way ANOVA with a Tukey HSD was used for the between group analyses. To assess the association between EEG background and discharges with the NFL levels we used a two-way ANOVA. The effect measures presented are the mean difference of log₁₀ NFL between the groups transformed back to the original scale demonstrating the multiplicative difference between the groups. A p-value of <0.05 was considered significant. We used R version 3.6.0 and SPSS Statistics Version 25 for the statistical analyses.

Data Availability Statement

Anonymized data not published within this article may be shared at the request of any qualified investigator for purposes of replicating procedures and results.

RESULTS

Patients

We included all patients who were still unconscious at 36 hours post-arrest who had a routine EEG after rewarming and at least one NFL measurement at 48 or 72 hours (n=262) (Figure 1). Included patients had longer duration from CA to return of spontaneous circulation, longer hospital stays, more often a poor neurological outcome, higher NFL levels and WLST were more often performed compared with patients excluded from the study (Table 1). Eligible patients with true missing data (N=70) had similar characteristics as included patients.

EEG recordings had a minimum duration of 10 minutes with a median time from CA to EEG of 74 hours (IQR 58-100 hours). During EEG registration, 101/262 (39%) patients had ongoing sedation, of which 67/101 (66%) had no electrographic discharges.

NFL in highly malignant, malignant, and benign EEG patterns

Twenty-eight percent of patients fulfilled criteria of a highly malignant EEG pattern, 38% had a malignant EEG, and 34% had a benign EEG with no malignant features (Table 2). NFL levels were 2.9 times higher in patients with highly malignant compared with malignant EEG patterns (95% CI: 1.4-6.1, $p < 0.001$), and 13 times higher in patients with malignant compared with benign EEG patterns (95% CI: 6.5-26.2, $p < 0.001$), effect size 0.47 (Figure 2). When categorizing EEGs, 20 patients with a malignant pattern were classified to have a continuous background without discharges due to either a reversed antero-posterior gradient, low voltage or a combination of both. Furthermore, 13 patients with a benign pattern were classified to have a continuous background with intermediate discharges since the amount of discharges did not fulfill the criteria for a malignant pattern. WLST due to neurological reasons was performed in 8/88 (9%) of patients with a benign, in 55/100 (55%) of patients with a malignant and in 50/74 (68%) of patients with highly malignant EEG-patterns.

EEG background continuity and NFL

EEG background was continuous in 57%, discontinuous in 15%, burst-suppression in 11% and suppression in 17% (Table 2). NFL concentrations for patients with a continuous background were lower than for any other background (discontinuous 95% CI: 2.26-18.06, burst-suppression 95% CI: 3.91-41.71 and suppression 95% CI: 5.74-41.74. Effect size: 0.30, $p < 0.001$ for all) (Figure 3A). NFL levels did not differ between discontinuous and burst-suppression background ($p = 0.42$), nor between burst-suppression and suppressed background ($p = 0.97$).

Electrographic discharges and NFL

Most EEGs (63%) were classified as without discharges, 9% had an intermediate amount and 28% had abundant discharges (Table 2). NFL levels were higher in patients with abundant discharges than in patients without discharges ($p < 0.001$) (Figure 3B). Overall, 24% of patients had ongoing anti-seizure medication during EEG recordings (Table 1). Only 27/165 (16%) of patients without electrographic discharges were treated with anti-seizure medication, in contrast to 11/23 (48%) with an intermediate amount and 44/74 (59%) of patients with abundant discharges. *We found that 127/262 (48%) of patients had any type of clinical seizures during the first 3 days after CA and/or during the EEG-recording. Of these 127 patients, 53 (42%) patients had no discharges, 14 (11%) had an intermediate amount of discharges and 60 (47%) had abundant discharges on the EEG.* When excluding patients with clinical seizures from our model, NFL levels remained higher in patients with abundant discharges than in patients without discharges ($p = 0.002$, data not shown).

NFL when combining EEG background and discharges

When evaluating the EEG background and the presence of discharges together, both the background ($p < 0.001$) and discharges ($p < 0.001$) were independently associated with NFL levels (Figure 4), the background explaining a larger proportion of variance than discharges ($R^2 = 0.30$ and $R^2 = 0.10$, respectively). Discharges were associated with higher NFL levels only in the group of patients with a continuous EEG background ($p < 0.001$). Hence, when the background was burst-suppression or suppression, there was no difference in NFL levels among patients with discharges compared to patients without discharges ($p = 0.43$ and $p = 0.06$, respectively). Notably, no patient with a discontinuous background survived to six-month follow-up if discharges were present, and NFL levels in patients with this combination were high.

DISCUSSION

In the present study, we could confirm that the standardized classification of post-cardiac arrest EEGs into benign, malignant, and highly malignant patterns by Westhall *et al.* is reflected by increasing NFL concentrations, indicating the degree of neuroaxonal injury.⁷ EEG background and electrographic discharges at 36 hours or later post-arrest were independently associated with blood NFL levels, where the background had the stronger association with NFL.

The highly malignant EEG pattern, which includes any background with $\geq 50\%$ suppression, has very high specificity for prediction of poor neurological outcome.¹¹ Substantially elevated NFL levels in most of these patients quantitatively confirm that highly malignant backgrounds are indeed associated with extensive neuroaxonal injury.^{7, 10}

Benign EEG patterns ≥ 36 hours post-arrest indicate a good prognosis, whereas malignant EEG patterns represent an intermediate group with both good and poor clinical

outcomes.^{7, 10, 11} In common with other classifications of EEG patterns, the classification that we used includes combinations of background patterns and superimposed discharges. To better understand which elements are more related to the extent of neuronal injury, we chose to separately evaluate EEG background and discharges.

Background activity was divided into four groups according to the amount of suppression periods. We did not detect any difference in NFL levels between suppressed and burst-suppression backgrounds. Both backgrounds could have different pathophysiological correlates, yet demonstrate similar degrees of neuroaxonal injury, where a suppressed background may indicate severe functional damage to pyramidal cells or inter-neurons and burst-suppression a severely damaged cortex with less affected subcortical areas.²⁹⁻³¹ A histopathological study found severe hypoxic-ischemic encephalopathy in 96% of patients with suppression or burst-suppression backgrounds.²⁹ On a group level, suppression of EEG background through sedatives has not been found to influence the reliability of poor outcome prediction, nonetheless, false positive patients have been reported.^{7, 10, 32} In our cohort, one patient had a good outcome despite a burst-suppression background, presumably due to ongoing significant sedation, as previously reported.¹⁰ The peak-NFL concentration in this patient was within age-dependent normal values of our laboratory, illustrating how the combination of EEG and a quantitative biomarker may reduce the risk of falsely pessimistic predictions.³³

In patients with a discontinuous background, we found a broad range of NFL levels indicating that an isolated finding of a discontinuous background does not reliably indicate severe brain injury. This is in accordance with the 2021 guidelines of the European Resuscitation Council and the European Society of Intensive Care Medicine stating that a discontinuous background has low prognostic performance within the first 24 hours post-arrest, and an inconsistent performance thereafter.¹²

The lowest NFL levels in our cohort were found in patients with a continuous EEG background. However, there were also a substantial amount of poor outcome patients with highly elevated levels of NFL in this group. An early return of a continuous background within the first 12-24 hours post-arrest is often predictive of a good neurological outcome.^{34, 35} In analogy with brainstem reflexes, a continuous background may recover later than 24 hours post-arrest despite extensive brain injury and is therefore not automatically predictive of good outcome.^{4, 23} At relatively long latency after arrest, this pattern could still be associated with severe histopathologic brain damage.²⁹ Whether the patients in our cohort restored a continuous background late cannot be determined, since continuous EEG-monitoring was not used. We hypothesize, that this may have been the case in poor outcome patients with severely elevated NFL levels. Furthermore, a continuous background can also display malignant features such as a reversed antero-posterior gradient.⁷

The presence of abundant discharges (>50% of the recording) is also a criterion for a malignant EEG and indicate a poor prognosis.^{7, 10} We found that when evaluating discharges irrespective of EEG background, patients with an abundant load had higher median NFL concentrations than patients without discharges. The group of patients with an intermediate amount of discharges did not differ in NFL levels compared to the other two groups. In another sub-study from the TTM-trial using continuous EEG-monitoring with a reduced montage, NFL levels were elevated at 72 hours post-arrest in patients with electrographic status epilepticus compared with patients without.³⁶ Another study compared EEG and neuron-specific enolase (NSE), and found no difference in levels between patients with or without discharges, possibly due to lack of separation between different amounts of discharges.³⁷ Electrographic discharges are considered a sign of increased excitatory activity of the pyramidal cells due to the loss of inhibitory interneurons, caused either by severe encephalopathy or injury to specific brain areas only.³⁸ On neuroimaging, discharges can be

associated with both cortical and subcortical lesions, but magnetic resonance imaging was reported as normal in 20% of patients with generalized periodic discharges.³⁹ In a proposed model, a mere 5% reduction in cortical disinhibition was sufficient to induce generalized periodic discharges.⁴⁰ Whether normal EEG patterns can be reestablished may depend on the extent of injury to cortical networks and reversibility of synaptic failure.³⁸ It is still unclear whether discharges induce additional injury through excitotoxicity or if they are solely the result of the hypoxic-ischemic injury caused by the arrest.¹¹

Discharges on a burst-suppression or suppressed background were not associated with a change in NFL levels in our study. A recent study with 7 patients also described higher NFL levels in patients with a suppressed background than in patients with generalized periodic discharges.⁴¹ A small histopathologic study reported similar findings.²⁹ This supports the assumption that neurons unable to produce neither background activity nor discharges are more injured than neurons generating them.

In our study, NFL levels did not differ whether discharges were present or not on a discontinuous background. Nonetheless, no patient with a discontinuous background survived to six-month follow-up if discharges were present and NFL levels in patients with this combination were high.

In patients with a continuous background, NFL was higher in those with discharges than without. Our data imply that discharges may only provide additional prognostic information when superimposed on a continuous or discontinuous background and that they are not necessarily associated with poor outcome. Previous studies after CA report that in patients with good outcome, status epilepticus evolved from a continuous background.^{13, 42} The design of our study cannot confirm whether discharges cause further NFL elevation in addition to the primary hypoxic-ischemic injury. Further research is required to identify those patients where anticonvulsant treatment may improve outcome and repeated NFL sampling at

later time-points could be valuable. We recently reported that low levels of brain injury markers are predictors of a favorable neurological outcome, indicating that EEG patterns and biomarkers together may help guide clinical decision-making.⁴³

Strengths and limitations

Strengths of our study include the international multicenter design, a conservative approach to neurological prognostication and strict criteria for WLST.^{19,44} As previously published, serum samples were prospectively collected from all patients at sites participating in the biobank sub-study and the number of missing samples were low.¹⁷ In contrast to the guideline-recommended biomarker NSE, which is also present in erythrocytes and neuroendocrine tumors, NFL levels are not falsely elevated in the presence of hemolysis.^{17,27}

The TTM-trial included adult patients with a presumed cardiac cause of arrest, and since we evaluate the extent of brain injury, we suspect that results would be similar in patients with anoxic brain injuries due to other causes. However, our results should be validated in a broader CA population.

Although EEGs were mandatory in the TTM-trial, examinations were still subject to selection bias, since patients awake or dead prior to the time-point of prognostication were excluded from this study. Our patient population had a higher rate of poor outcome than the patients that were excluded, since patients who awoke prior to examination were excluded.^{7,10} We do not consider this a limitation since neurological prognostication is only relevant in this group of comatose patients.

Small sample sizes in some subgroups resulted in limited power in subgroup analyses, which may be regarded as hypothesis-generating. The cohort included in this study was previously evaluated when validating highly malignant patterns as reported previously.^{7,10} EEG reactivity was not included in this study as not all collaborating sites performed

reactivity testing. The ACNS criteria have been updated after the analysis performed in this study.⁴⁵ However, ACNS definitions used in our study have undergone only minor changes which we consider insignificant for the interpretation of our results.

The EEGs were performed >36 hours post-arrest and we assume that our results could differ in EEGs performed earlier. Our findings need to be validated for EEGs performed <36 hours post-arrest. Further, we cannot exclude that patients had electrographic seizures, potentially affecting NFL levels, not detected by routine-EEG, that might have been detected with a continuous EEG monitoring. The rate of patients with ongoing anti-seizure medication was higher with increasing amounts of discharges on the EEG. Nonetheless, 16% of patients without electrographic discharges were also treated with anticonvulsant drugs and 39% of patients had ongoing sedation during the EEG recording. It is possible that if left untreated, some patients would otherwise have demonstrated electrographic discharges which may have influenced our results. We previously reported that the prognostic ability of EEG on the group-level in the TTM-trial-cohort was not significantly affected by ongoing sedation, but acknowledge that individual false-positive patients may occur for instance the good outcome patient with burst-suppression during significant sedation described above.^{7, 10}

The only pre-specified EEG criterion allowing withdrawal of life-sustaining therapy in the TTM-trial was a therapy-refractory status epilepticus ≥ 108 hours post-arrest.^{19, 44} Results of local EEG reviews were available to treating physicians and therefore we cannot exclude the risk of a self-fulfilling prophecy on neurological outcome. In contrast, NFL was analyzed after trial completion, thus levels were not available upon clinical decision-making, minimizing risk for bias. NFL has been validated for clinical use in some European countries but is not yet widely clinically available and there is no reference standard or international normal reference limit for serum NFL.⁴⁶

ACCEPTED

CONCLUSION

EEG patterns >36 hours after cardiac arrest reflect the extent of brain injury as measured by NFL in serum. The EEG background is more strongly related to the extent of brain injury compared to superimposed discharges. A clinical scenario with unexpected combinations of high NFL levels with a continuous EEG pattern >36 h could help identify poor outcome patients, and low NFL levels in patients with malignant or highly malignant patterns could help identify patients with potentially favorable outcome.

Table 1. Patient characteristics.

| | | Eligible | All excluded patients |
|---|-----------------|-------------------------|-----------------------|
| | Included, N=262 | True missing data, N=70 | N=677 |
| Age (years) | 65 (58-73) | 65 (57-73) | 65 (56-73) |
| Male | 214 (81.7) | 54 (77.1) | 547 (80.8) |
| Minutes to ROSC | 27 (20-42) | 30 (25-51) | 25 (16-37) |
| Peak-NFL pg/ml | 2316 (159-7638) | 2726 (482-8779) | 95 (40-585)* |
| Hours from cardiac arrest to EEG | 74 (58-100) | - | - |
| Anti-seizure medication | 82 (31.3) | - | - |
| Ongoing sedation | 101 (38.5) | - | - |
| CPC at 6 months** | | | |
| 1 – Good cerebral performance | 56 (21.4) | 14 (20.0) | 322 (48.0) |
| 2 – Moderate cerebral disability | 15 (5.7) | 2 (2.9) | 47 (7.0) |
| 3 – Severe cerebral disability | 12 (4.6) | 5 (7.1) | 25 (3.7) |
| 4 – Coma or vegetative state | 7 (2.7) | 0 (0) | 0 (0) |
| 5 – Dead | 172 (65.6) | 49 (70.0) | 277 (41.3) |
| WLST performed | 132 (50.4) | 34 (48.6) | 184 (27.2) |
| WLST neurological | 113 (85.6) | 25 (73.5) | 98 (53.3) |
| Presumed cause of death | | | |
| Neurological | 125 (72.7) | 34 (69.4) | 142 (51.3) |
| Cardiac | 26 (15.1) | 8 (16.3) | 82 (29.6) |
| Multi organ failure | 10 (5.8) | 7 (14.3) | 46 (16.6) |
| Other | 11 (6.4) | 0 (0) | 7 (2.5) |

*Patient characteristics of included patients with both EEG and peak-NFL (highest available Neurofilament light concentration in serum at either 48 or 72 hours post-arrest) N=262, eligible patients with true missing data (N=70) and all patients excluded from the analysis (N=677) as described in the flowchart Figure 1. Results are presented as numbers (percentages) and median (interquartile range) as appropriate. ROSC; return of spontaneous circulation, CPC; Cerebral Performance Category Scale at six months follow-up, WLST; withdrawal of life-sustaining therapy. Presumed cause of death as per treating physician. *Data available for 394 patients. **Missing CPC (included patients n=0, excluded patients n=6).*

Table 2. EEG findings and peak-NFL levels

| | | N (%) | Peak-NFL pg/ml | Poor outcome N (%) |
|------------------------------|-------------------------------------|------------|--------------------------|--------------------|
| EEG patterns | | | | |
| | <i>Benign</i> | 88 (33.6) | 106 (43-854) | 34/88 (38.6) |
| | <i>Malignant</i> | 100 (38.2) | 3141 (851-7780) | 84/100 (84.0) |
| | <i>Highly malignant</i> | 74 (28.2) | 7712 (4016-14391) | 73/74 (98.6) |
| EEG background | | | | |
| | <i>Continuous/nearly Continuous</i> | 148 (56.5) | 567 (62-2925) | 83/148 (56.1) |
| | <i>Discontinuous</i> | 40 (15.2) | 4423 (1876-7757) | 35/40 (87.5) |
| | <i>Burst-suppression</i> | 29 (11.1) | 7277 (4048-11866) | 28/29 (96.6) |
| | <i>Suppression</i> | 45 (17.2) | 7713 (4134-19151) | 45/45 (100) |
| EEG discharges | | | | |
| | <i>None</i> | 165 (63.0) | 967 (68-7573) | 100/165 (60.6) |
| | <i>Intermediate</i> | 23 (8.8) | 2244 (743-5501) | 19/23 (82.6) |
| | <i>Abundant</i> | 74 (28.2) | 4462 (1980-7907) | 72/74 (97.3) |
| Background Discharges | | | | |
| <i>Continuous</i> | <i>None</i> | 95 (36.3) | 98 (42-929) | 36/95 (37.9) |
| | <i>Intermediate</i> | 17 (6.5) | 1023 (444-3020) | 13/17 (76.5) |
| | <i>Abundant</i> | 36 (13.7) | 3295 (1532-9029) | 34/36 (94.4) |
| <i>Discontinuous</i> | <i>None</i> | 15 (5.7) | 2801(237-7573) | 10/15 (66.7) |
| | <i>Intermediate</i> | 2 (0.8) | 11361 (range 6765-15957) | 2/2 (100) |
| | <i>Abundant</i> | 23 (8.8) | 4658 (2253-7768) | 23/23 (100) |
| <i>Burst-suppression</i> | <i>None</i> | 16 (6.1) | 8965 (4426-15144) | 15/16 (93.8) |
| | <i>Intermediate</i> | 4 (1.5) | 4327 (2715-10738) | 4/4 (100) |
| | <i>Abundant</i> | 9 (3.4) | 7142 (3918-8243) | 9/9 (100) |
| <i>Suppression</i> | <i>None</i> | 39 (14.9) | 9279 (4537-21939) | 39/39 (100) |
| | <i>Intermediate</i> | 0 (0) | - | - |
| | <i>Abundant</i> | 6 (2.3) | 3461 (1548-6931) | 6/6 (100) |

Overview of EEG background and discharges, combinations of EEG findings and classifications of EEG patterns according to Westhall et al.⁷ EEG findings and poor outcome at six months' follow-up (CPC 3-5) are presented as numbers (percentages). Peak-NFL (the highest available neurofilament light serum levels at 48 or 72 hours post-arrest) in pg/mL is presented in median (interquartile range). Poor neurological outcome was defined as Cerebral Performance Category Scale 3-5 (severe cerebral disability, vegetative state or death) at six months follow-up.

FIGURE LEGENDS

Figure 1. Flow chart patient inclusion

The modified intention-to-treat population in the TTM-trial consisted of N=939 patients. Nine study sites were excluded due to technical issues in providing EEGs for export in sufficient quality required for centralized evaluation. EEG: routine electroencephalogram performed after rewarming but <14 days post-arrest. NFL: serum neurofilament light chain protein. *21/274 (7.6%) of patients who were awake prior to prognostication still had poor neurological outcome at 6 months.

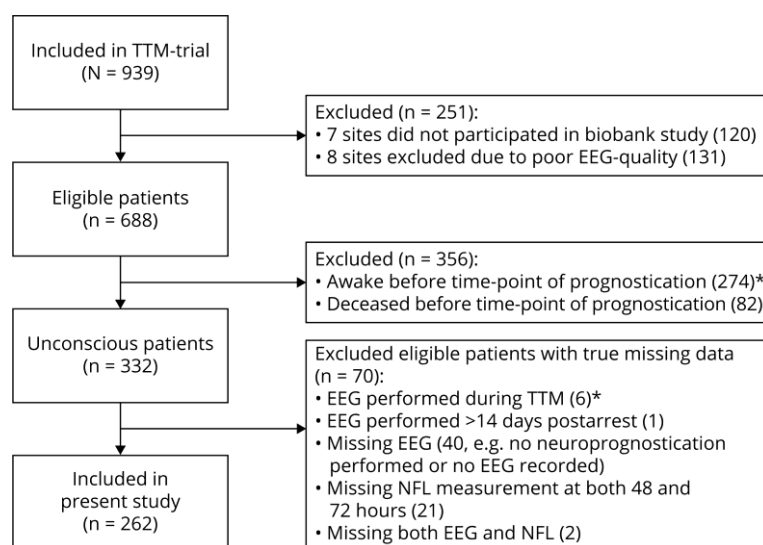
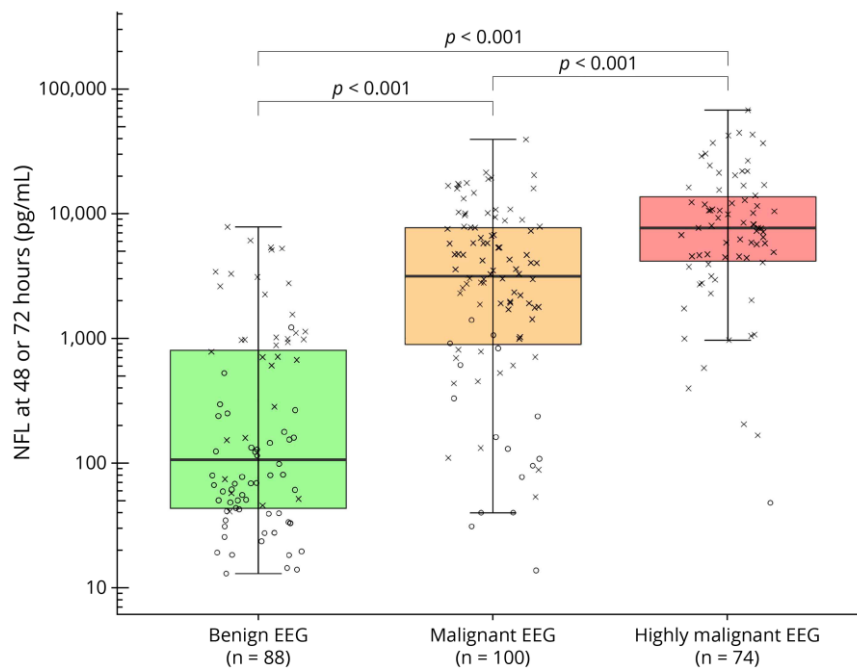


Figure 2. Highly malignant, malignant, and benign EEG patterns and serum NFL

Boxplot demonstrating logarithmic peak-NFL levels (highest serum neurofilament levels at either 48 or 72 hours post-arrest) for EEG patterns as defined by Westhall *et al.*:⁷ “Highly malignant”; burst-suppression or suppression with/without discharges, “Malignant”; discontinuous, reversed antero-posterior gradient or low-voltage background, abundant rhythmic or periodic discharges or unequivocal seizures, “Benign”; continuous background without malignant features. Neurological outcome for each patient is indicated through “X” (poor outcome, CPC 3-5) or “O” (good outcome, CPC 1-2) at six months’ follow-up. Peak-NFL was increasingly higher in more malignant EEG patterns ($p < 0.001$).



Figures 3A-B. EEG background, discharges, and serum NFL

Boxplots demonstrating logarithmic peak-NFL according to EEG background (Figure 3A) or the presence of discharges (Figure 3B). Neurological outcome for each patient is indicated through “X” (poor outcome, CPC 3-5) or “O” (good outcome, CPC 1-2) at six months’ follow-up. The highest peak-NFL levels were seen in patients with burst-suppression or suppression. In patients with a continuous background, poor outcome patients had higher NFL levels than good outcome patients, median 60.7 (IQR: 32.8- 118.7) pg/mL vs. median 998.3 (IQR: 366.0- 3449.7) pg/mL, $p < 0.005$. Peak-NFL was higher in patients with an abundant amount of discharges than in patients without discharges ($p < 0.001$). In patients without discharges, NFL levels were higher in poor outcome patients than in good outcome patients, median 60.7 (IQR: 32.9-128.4) pg/mL vs. median 5305.5 (IQR: 1064.8-12926.6) pg/mL, $p < 0.005$.

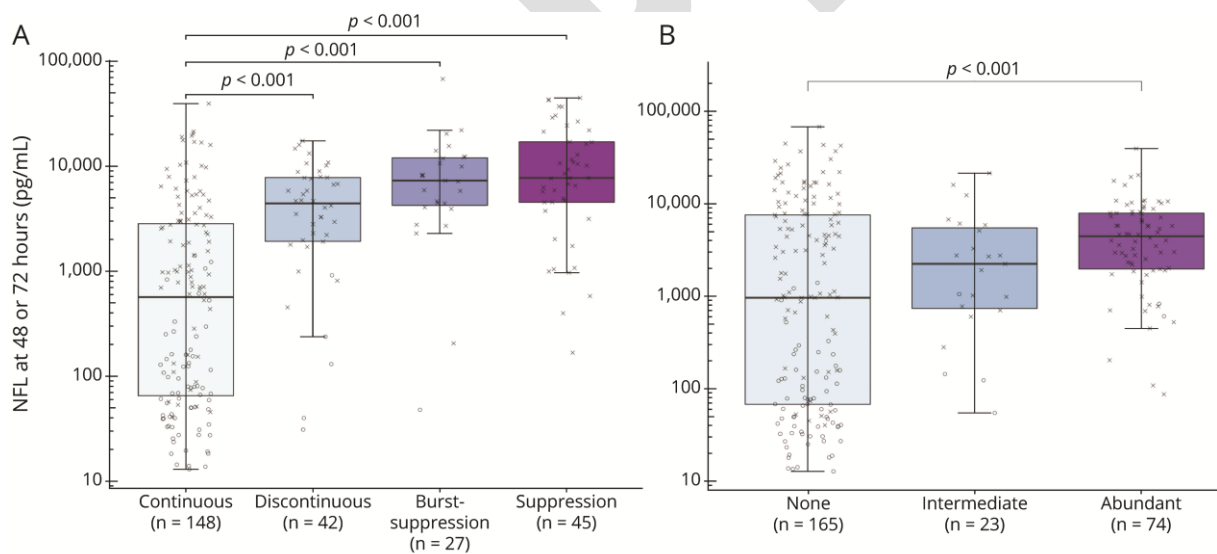
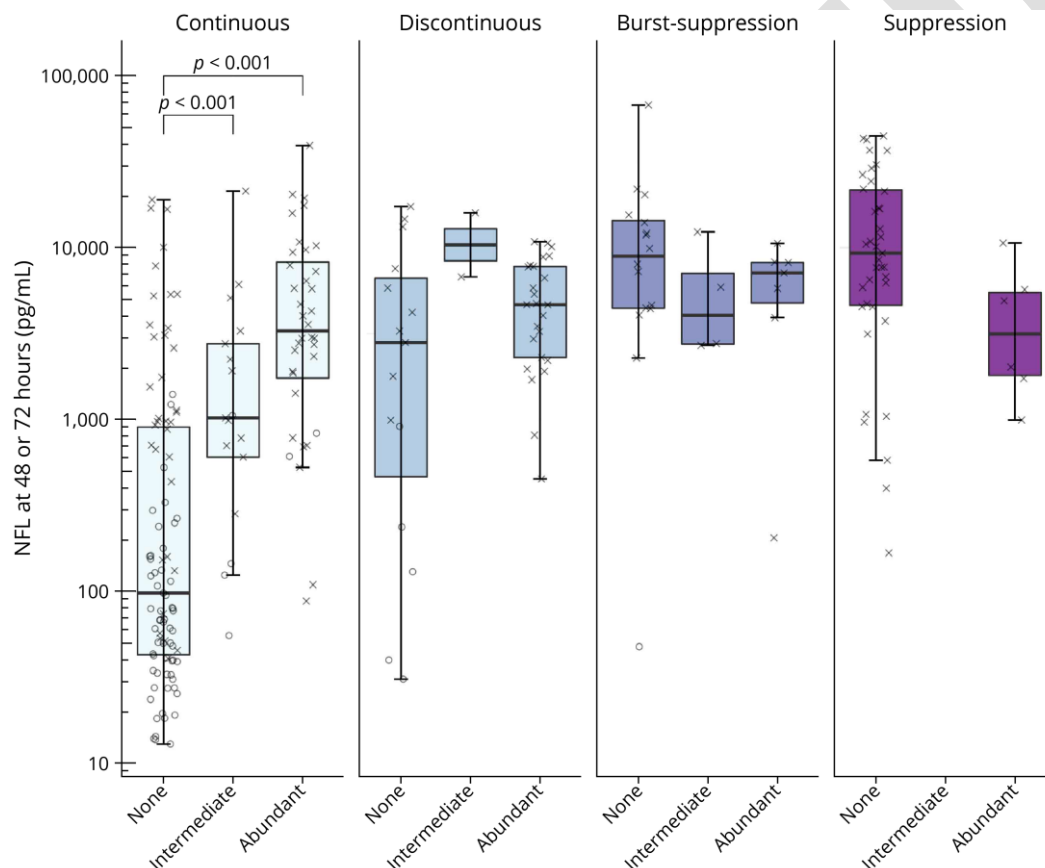


Figure 4. EEG background, superimposed discharges, and serum NFL

Boxplot demonstrating logarithmic peak-NFL in patients with continuous, discontinuous, burst-suppression and suppressed EEG-background and the presence of superimposed discharges. Neurological outcome for each patient is indicated through “X” (poor outcome, CPC 3-5) or “O” (good outcome, CPC 1-2) at six months’ follow-up. In patients with a continuous background, NFL levels were higher in patients with an intermediate or abundant amount of discharges than in patients without discharges ($p < 0.001$). No other differences could be found between non-continuous backgrounds and the presence of discharges.



REFERENCES

1. Friberg H, Cronberg T, Dunser MW, Duranteau J, Horn J, Oddo M. Survey on current practices for neurological prognostication after cardiac arrest. *Resuscitation* 2015;90:158-162.
2. Jorgensen EO, Malchow-Moller A. Natural history of global and critical brain ischaemia. Part II: EEG and neurological signs in patients remaining unconscious after cardiopulmonary resuscitation. *Resuscitation* 1981;9:155-174.
3. Raffin CN, Harrison M, Sick TJ, Rosenthal M. EEG suppression and anoxic depolarization: influences on cerebral oxygenation during ischemia. *J Cereb Blood Flow Metab* 1991;11:407-415.
4. Rossetti AO, Tovar Quiroga DF, Juan E, et al. Electroencephalography Predicts Poor and Good Outcomes After Cardiac Arrest: A Two-Center Study. *Crit Care Med* 2017;45:e674-e682.
5. Ruijter BJ, Tjepkema-Cloostermans MC, Tromp SC, et al. Early electroencephalography for outcome prediction of postanoxic coma: A prospective cohort study. *Ann Neurol* 2019;86:203-214.
6. Cloostermans MC, van Meulen FB, Eertman CJ, Hom HW, van Putten MJ. Continuous electroencephalography monitoring for early prediction of neurological outcome in postanoxic patients after cardiac arrest: a prospective cohort study. *Crit Care Med* 2012;40:2867-2875.
7. Westhall E, Rossetti AO, van Rootselaar AF, et al. Standardized EEG interpretation accurately predicts prognosis after cardiac arrest. *Neurology* 2016;86:1482-1490.
8. Hirsch LJ, LaRoche SM, Gaspard N, et al. American Clinical Neurophysiology Society's Standardized Critical Care EEG Terminology: 2012 version. *J Clin Neurophysiol* 2013;30:1-27.
9. Duez CHV, Johnsen B, Ebbesen MQ, et al. Post resuscitation prognostication by EEG in 24 vs 48h of targeted temperature management. *Resuscitation* 2019;135:145-152.
10. Backman S, Cronberg T, Friberg H, et al. Highly malignant routine EEG predicts poor prognosis after cardiac arrest in the Target Temperature Management trial. *Resuscitation* 2018;131:24-28.
11. Sandroni C, D'Arrigo S, Cacciola S, et al. Prediction of poor neurological outcome in comatose survivors of cardiac arrest: a systematic review. *Intensive Care Med* 2020.
12. Nolan JP, Sandroni C, Bottiger BW, et al. European Resuscitation Council and European Society of Intensive Care Medicine guidelines 2021: post-resuscitation care. *Intensive Care Med* 2021.
13. Ruijter BJ, van Putten MJ, Hofmeijer J. Generalized epileptiform discharges in postanoxic encephalopathy: Quantitative characterization in relation to outcome. *Epilepsia* 2015;56:1845-1854.
14. Barbella G, Lee JW, Alvarez V, et al. Prediction of regaining consciousness despite an early epileptiform EEG after cardiac arrest. *Neurology* 2020;94:e1675-e1683.
15. Eastwood GM, Schneider AG, Suzuki S, et al. Targeted therapeutic mild hypercapnia after cardiac arrest: A phase II multi-centre randomised controlled trial (the CCC trial). *Resuscitation* 2016;104:83-90.
16. Jakkula P, Pettila V, Skrifvars MB, et al. Targeting low-normal or high-normal mean arterial pressure after cardiac arrest and resuscitation: a randomised pilot trial. *Intensive Care Med* 2018;44:2091-2101.
17. Moseby-Knappe M, Mattsson N, Nielsen N, et al. Serum Neurofilament Light Chain for Prognosis of Outcome After Cardiac Arrest. *JAMA neurology* 2019;76:64-71.

18. Wihersaari L, Ashton NJ, Reinikainen M, et al. Neurofilament light as an outcome predictor after cardiac arrest: a post hoc analysis of the COMACARE trial. *Intensive Care Med* 2020.
19. Nielsen N, Wetterslev J, Cronberg T, et al. Targeted temperature management at 33 degrees C versus 36 degrees C after cardiac arrest. *N Engl J Med* 2013;369:2197-2206.
20. Nielsen N, Winkel P, Cronberg T, et al. Detailed statistical analysis plan for the target temperature management after out-of-hospital cardiac arrest trial. *Trials* 2013;14:300.
21. Lybeck A, Friberg H, Aneman A, et al. Prognostic significance of clinical seizures after cardiac arrest and target temperature management. *Resuscitation* 2017;114:146-151.
22. Dragancea I, Wise MP, Al-Subaie N, et al. Protocol-driven neurological prognostication and withdrawal of life-sustaining therapy after cardiac arrest and targeted temperature management. *Resuscitation* 2017;117:50-57.
23. Dragancea I, Horn J, Kuiper M, et al. Neurological prognostication after cardiac arrest and targeted temperature management 33 degrees C versus 36 degrees C: Results from a randomised controlled clinical trial. *Resuscitation* 2015;93:164-170.
24. Lybeck A, Cronberg T, Aneman A, et al. Time to awakening after cardiac arrest and the association with target temperature management. *Resuscitation* 2018;126:166-171.
25. World Medical A. World Medical Association Declaration of Helsinki: ethical principles for medical research involving human subjects. *JAMA* 2013;310:2191-2194.
26. Nielsen N, Wetterslev J, al-Subaie N, et al. Target Temperature Management after out-of-hospital cardiac arrest--a randomized, parallel-group, assessor-blinded clinical trial--rationale and design. *Am Heart J* 2012;163:541-548.
27. Stammet P, Collignon O, Hassager C, et al. Neuron-Specific Enolase as a Predictor of Death or Poor Neurological Outcome After Out-of-Hospital Cardiac Arrest and Targeted Temperature Management at 33 degrees C and 36 degrees C. *J Am Coll Cardiol* 2015;65:2104-2114.
28. Westhall E, Rosen I, Rossetti AO, et al. Electroencephalography (EEG) for neurological prognostication after cardiac arrest and targeted temperature management; rationale and study design. *BMC Neurol* 2014;14:159.
29. Endisch C, Westhall E, Kenda M, et al. Hypoxic-Ischemic Encephalopathy Evaluated by Brain Autopsy and Neuroprognostication After Cardiac Arrest. *JAMA Neurol* 2020.
30. Steriade M, Amzica F, Contreras D. Cortical and thalamic cellular correlates of electroencephalographic burst-suppression. *Electroencephalogr Clin Neurophysiol* 1994;90:1-16.
31. Hofmeijer J, Tjepkema-Cloostermans MC, van Putten MJ. Burst-suppression with identical bursts: a distinct EEG pattern with poor outcome in postanoxic coma. *Clin Neurophysiol* 2014;125:947-954.
32. Ruijter BJ, van Putten M, van den Bergh WM, Tromp SC, Hofmeijer J. Propofol does not affect the reliability of early EEG for outcome prediction of comatose patients after cardiac arrest. *Clin Neurophysiol* 2019;130:1263-1270.
33. Hviid CVB, Knudsen CS, Parkner T. Reference interval and preanalytical properties of serum neurofilament light chain in Scandinavian adults. *Scand J Clin Lab Invest* 2020;80:291-295.
34. Ruijter BJ, Hofmeijer J, Meijer HGE, van Putten M. Synaptic damage underlies EEG abnormalities in postanoxic encephalopathy: A computational study. *Clin Neurophysiol* 2017;128:1682-1695.

35. Hofmeijer J, Beernink TM, Bosch FH, Beishuizen A, Tjepkema-Cloostermans MC, van Putten MJ. Early EEG contributes to multimodal outcome prediction of postanoxic coma. *Neurology* 2015;85:137-143.
36. Lybeck A, Friberg H, Nielsen N, et al. Postanoxic electrographic status epilepticus and serum biomarkers of brain injury. *Resuscitation* 2021;158:253-257.
37. Rossetti AO, Carrera E, Oddo M. Early EEG correlates of neuronal injury after brain anoxia. *Neurology* 2012;78:796-802.
38. van Putten MJ, Hofmeijer J. Generalized periodic discharges: Pathophysiology and clinical considerations. *Epilepsy Behav* 2015;49:228-233.
39. Yemisci M, Gurer G, Saygi S, Ciger A. Generalised periodic epileptiform discharges: clinical features, neuroradiological evaluation and prognosis in 37 adult patients. *Seizure* 2003;12:465-472.
40. Tjepkema-Cloostermans MC, Hindriks R, Hofmeijer J, van Putten MJ. Generalized periodic discharges after acute cerebral ischemia: reflection of selective synaptic failure? *Clin Neurophysiol* 2014;125:255-262.
41. Disanto G, Prosperetti C, Gobbi C, et al. Serum neurofilament light chain as a prognostic marker in postanoxic encephalopathy. *Epilepsy Behav* 2019;101:106432.
42. Dragancea I, Backman S, Westhall E, Rundgren M, Friberg H, Cronberg T. Outcome following postanoxic status epilepticus in patients with targeted temperature management after cardiac arrest. *Epilepsy Behav* 2015;49:173-177.
43. Moseby-Knappe M, Mattsson-Carlgren N, Stammet P, et al. Serum markers of brain injury can predict good neurological outcome after out-of-hospital cardiac arrest. *Intensive Care Med* 2021;47:984-994.
44. Cronberg T, Horn J, Kuiper MA, Friberg H, Nielsen N. A structured approach to neurologic prognostication in clinical cardiac arrest trials. *Scand J Trauma Resusc Emerg Med* 2013;21:45.
45. Hirsch LJ, Fong MWK, Leitinger M, et al. American Clinical Neurophysiology Society's Standardized Critical Care EEG Terminology: 2021 Version. *J Clin Neurophysiol* 2021;38:1-29.
46. Moseby-Knappe M, Cronberg T. Blood biomarkers of brain injury after cardiac arrest - A dynamic field. *Resuscitation* 2020.

Neurology®

Association Between EEG Patterns and Serum Neurofilament Light After Cardiac Arrest: A Post Hoc Analysis of the TTM Trial

Linnéa Grindegård, Tobias Cronberg, Sofia Backman, et al.

Neurology published online April 25, 2022

DOI 10.1212/WNL.0000000000200335

This information is current as of April 25, 2022

| | |
|---|--|
| Updated Information & Services | including high resolution figures, can be found at: http://n.neurology.org/content/early/2022/04/25/WNL.0000000000200335.full |
| Subspecialty Collections | This article, along with others on similar topics, appears in the following collection(s): Cardiac http://n.neurology.org/cgi/collection/cardiac Coma http://n.neurology.org/cgi/collection/coma EEG; see Epilepsy/Seizures http://n.neurology.org/cgi/collection/eeg_see_epilepsy-seizures Prognosis http://n.neurology.org/cgi/collection/prognosis |
| Permissions & Licensing | Information about reproducing this article in parts (figures, tables) or in its entirety can be found online at: http://www.neurology.org/about/about_the_journal#permissions |
| Reprints | Information about ordering reprints can be found online: http://n.neurology.org/subscribers/advertise |

Neurology® is the official journal of the American Academy of Neurology. Published continuously since 1951, it is now a weekly with 48 issues per year. Copyright Copyright © 2022 The Author(s). Published by Wolters Kluwer Health, Inc. on behalf of the American Academy of Neurology.. All rights reserved. Print ISSN: 0028-3878. Online ISSN: 1526-632X.

