



Article

A Citizen Science Approach to Identifying Indoor Environmental Barriers to Optimal Health for under 5s Experiencing Homelessness in Temporary Accommodation

Diana Margot Rosenthal ^{1,2,*}, Marcella Ucci ³, Michelle Heys ^{1,4}, Antoinette Schoenthaler ⁵,
Monica Lakhanpaul ^{1,6}, Andrew Hayward ^{2,7} and Celine Lewis ^{1,8}

- ¹ UCL Population, Policy and Practice Research and Teaching Department, Great Ormond Street Institute of Child Health, University College London, London WC1N 1EH, UK; m.veys@ucl.ac.uk (M.H.); m.lakhanpaul@ucl.ac.uk (M.L.); celine.lewis@ucl.ac.uk (C.L.)
 - ² UCL Collaborative Centre for Inclusion Health, University College London, London WC1E 7HB, UK; a.hayward@ucl.ac.uk
 - ³ UCL Institute for Environmental Design and Engineering, The Bartlett School of Environment, Energy and Resources, University College London, London WC1H 0NN, UK; m.ucci@ucl.ac.uk
 - ⁴ Specialist Children and Young People's Services, East London NHS Foundation Trust, London E15 4PT, UK
 - ⁵ Center for Healthful Behavior Change, Institute for Excellence in Health Equity, NYU Langone Health, New York, NY 10016, USA; antoinette.schoenthaler@nyulangone.org
 - ⁶ Community Paediatrics, Whittington Health NHS, London N19 5NF, UK
 - ⁷ UCL Institute of Epidemiology and Health Care, University College London, London WC1E 7HB, UK
 - ⁸ North Thames Genomic Laboratory Hub, Great Ormond Street Hospital, London WC1N 3BH, UK
- * Correspondence: diana.rosenthal@ucl.ac.uk



Citation: Rosenthal, D.M.; Ucci, M.; Heys, M.; Schoenthaler, A.; Lakhanpaul, M.; Hayward, A.; Lewis, C. A Citizen Science Approach to Identifying Indoor Environmental Barriers to Optimal Health for under 5s Experiencing Homelessness in Temporary Accommodation. *Int. J. Environ. Res. Public Health* **2022**, *19*, 3976. <https://doi.org/10.3390/ijerph19073976>

Academic Editor: Paul B. Tchounwou

Received: 1 February 2022

Accepted: 23 March 2022

Published: 27 March 2022

Publisher's Note: MDPI stays neutral with regard to jurisdictional claims in published maps and institutional affiliations.



Copyright: © 2022 by the authors. Licensee MDPI, Basel, Switzerland. This article is an open access article distributed under the terms and conditions of the Creative Commons Attribution (CC BY) license (<https://creativecommons.org/licenses/by/4.0/>).

Abstract: The first five years of life are critical for optimal growth, health, and cognitive development. Adverse childhood experiences, including experiencing homelessness, can be a risk factor for multiple health issues and developmental challenges. There is a dearth of data collected with and by families with children under age five living in temporary accommodation due to experiencing homelessness (U5TA) describing indoor environmental barriers that prevent U5TA from achieving and maintaining optimal health. The aim of this study was to address this current gap using a citizen science approach. Fifteen participants, who were mothers of U5TA living in a deprived area of London, and the lead researcher collected data in late 2019/early 2020 using: (I) a housing survey conducted via a mobile app; (II) house visits; and (III) collaborative meetings. Data were analyzed using thematic analysis. Key themes included: overcrowding/shared facilities, dampness/mold growth, poor/inadequate kitchen/toilet facilities, infestations/vermin, structural problems/disrepair, unsafe electrics, excessively cold temperatures, and unsafe surfaces that risk causing trips/falls, with all participants experiencing multiple concurrent indoor environmental barriers. The citizen science approach was successfully used to collect meaningful data demonstrating the need for child-centered housing policies meeting the needs of current and future generations of families living in TA.

Keywords: child homelessness; family homelessness; temporary accommodation; citizen science; inclusion health; indoor environmental quality; public health; inequalities; inequities

1. Introduction

The first five years of life alone are paramount for optimal growth and development, including ~90% of brain development and achieving milestones (e.g., learning, speaking, walking) [1–4]. However, children under the age of five who live in temporary accommodation due to experiencing homelessness (U5TA) have a higher risk of developing chronic conditions and repeated cycles of homelessness and adverse childhood experiences (ACEs) throughout their lives [1–7]. Homelessness has increased at least three- to four-fold over recent years in high-income countries (HICs) such as the United Kingdom (U.K.) [8,9].

This problem is not confined to developed countries: estimates of children experiencing homelessness in developing countries have also highlighted the significance of the problem. However, these estimates, along with those collected in HICs, have been ambiguous with insufficient data collection, including real-time data and/or varying definitions of homelessness [9–12]. Therefore, child homelessness is a global problem that continues to grow [12]. On 18 June 2020, the United Nations (UN) Economic and Social Council adopted its first resolution on homelessness, which acknowledged there were multiple pathways leading “people of all ages from all walks of life” to an occurrence of homelessness in both developed and developing countries [12,13].

Studies on children experiencing homelessness have found that these children had higher odds of poor health, severe academic delay, behavior problems, and/or mental disorders with similar issues occurring in their parents/carers [9,14–16]. A recent scoping review article [9] found a series of interacting barriers preventing U5TA from accessing health services and achieving optimal health outcomes. However, the evidence found was sparse due to: (1) the lack of primary research studies on children under age five (under 5s) experiencing homelessness studied exclusively and (2) limited data collected by and with families living in temporary accommodation (TA) describing their experiences [9]. Citizen science is one approach to achieving inclusive studies and policymaking that can address these gaps.

“Citizen science”, first coined in the mid-1990s, has become an emerging area of research and practice where members of the public have a greater role within research and recognize that they play an invaluable role by providing insights not typically held by researchers reviving the “it takes a village” approach [17,18]. Citizen science is a form of community-based participatory research (CBPR) in the collaborative sense by involving all stakeholders in the research process of identifying a community need requiring transformational social change in order to improve health outcomes and mitigate health inequalities and inequities [19]. Although most studies have been ecological and conservational in nature (e.g., The “Arctic Hunters” Project) [20], citizen science has been framed as an important contribution to the democratization of medical care and healthcare [21]. Citizen science has been increasingly used to understand patient health experiences (e.g., Patients-LikeMe, a digital platform) [22], but few studies exist overall in the public health arena [21]. In the Netherlands, the iSpex project crowdsourced thousands of citizens to submit air quality measurements in order to assess the impact of atmospheric aerosols on health, climate, and air traffic through mapping [23]. Recently, the expansion of citizen science has been facilitated by digital technology specifically smartphones and the Internet. However, this approach fuels digital inequity, which mirror health inequities, therefore excluding clinically or socially vulnerable groups such as families living in TA from participating in citizen science approaches.

These aforementioned gaps were addressed by this study. The primary aim of this study was to describe the indoor environmental barriers to optimal health for U5TA. The secondary aim was to explore the suitability of a citizen science approach to address the primary aim.

2. Materials and Methods

2.1. Ethics

UCL Data Protection Office registration (no. Z6364106/2019/03/157) was obtained on 22 March 2019. UCL Research Ethics Committee (REC) approval ID number: 15097-001 was obtained on 30 May 2019. All benefits and potential risks associated with the study and working with a vulnerable group were identified and submitted as part of the UCL REC high-risk application process [24]. We also ensured that support for participants was available through facilitators, who were trained in trauma care and counseling, health visitors, and a nursery nurse if they felt that the study compromised their health or wellbeing.

2.2. Theoretical Frameworks

The study design, data collection materials, and analysis were guided by two theoretical frameworks: the social ecological model (SEM) [25] and health map for the local human habitat [26]. Together, these models provide a holistic view of how U5TA and their families are part of a global ecosystem and may be influenced by various determinants of optimal health, which include structural, systemic/political, environmental, socio-demographics, and more. The constructs within these models were used as the overarching framework for questions and observations conducted in the surveys and house visits, as well as to guide the overall themes in the analysis.

2.3. Study Design

This study adopted a citizen science approach whereby the research was co-created and participatory through the inclusion of citizens and their real-world problems along with the scientist as the co-designer and facilitator, which resulted in a shared, open, and reflexive research process [27]. This multi-methods study used methodological triangulation, including observations, a qualitative survey, photographs, and qualitative data collected from collaborative meetings (Figure 1). Methodological triangulation was chosen because it uses more than one kind of method to study a phenomenon. This helps to confirm findings and increase validity through a more comprehensive data set, thus providing a richer, more understanding of the phenomena being studied [28–30].

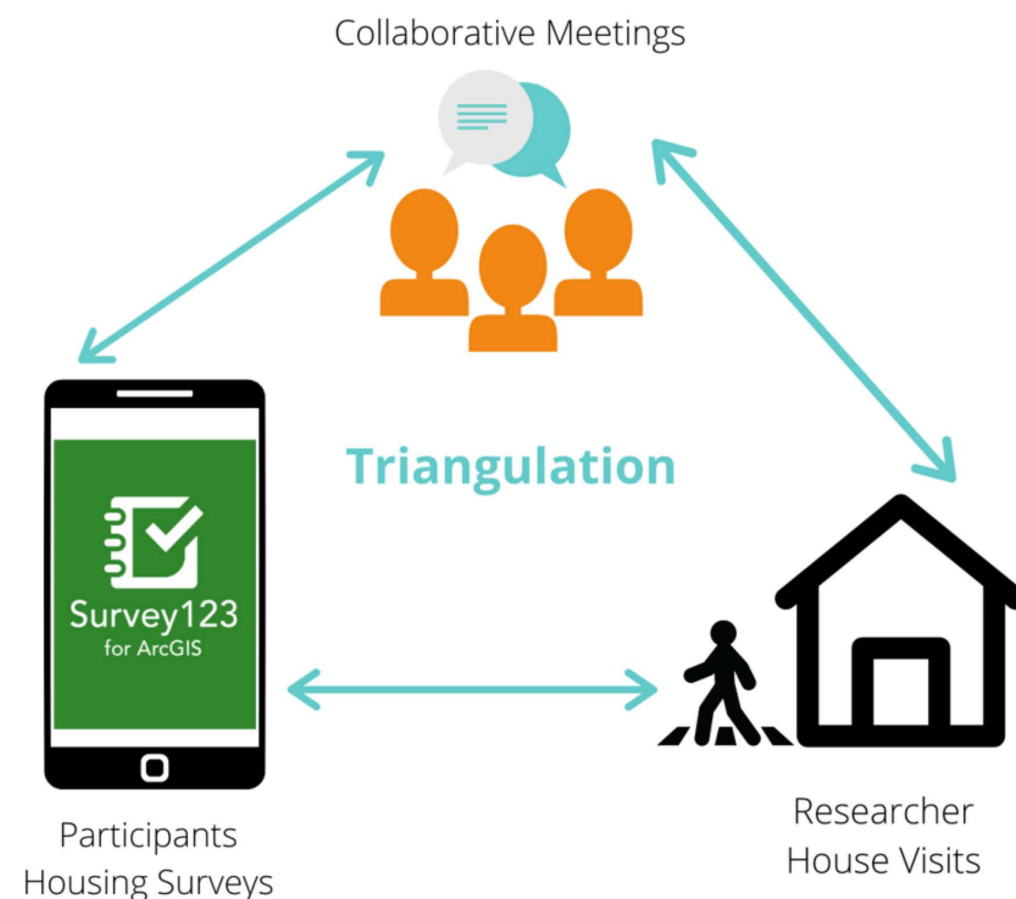


Figure 1. Methodological triangulation in study design.

2.4. Study Setting

The London Borough of Newham (LBN), East London, U.K., was selected as the primary setting for this study because LBN has the highest number of homeless households in TA in London and England (49 per 1000 households) [31–33]. Temporary accommodation

is included under the umbrella definition of homelessness, i.e., if a family is living in TA, they are experiencing homelessness [9,34], but not necessarily the other way around. Participants were conveniently sampled at a local charity, The Magpie Project, which provides support services for children under age five and their mothers experiencing homelessness who have access to limited resources to essentials such as nappies, baby supplies, clothes, travel expenses, and food bank referrals. At this venue, co-location of services was also frequently accessed by families living in TA both in and out of the borough. Socio-demographic data were to be provided by the charity to alleviate participant burden; however, due to events outside of our control, these data could not be accessed.

2.5. Study Overview and Co-Design

2.5.1. Citizen Science Approach

This study was informed by European Citizen Science Association (ESCA)'s ten principles of citizen science to ensure best practices [35], which included working together with families with lived experience of TA in a community-based setting to generate new knowledge and understanding of critical issues that were currently impacting this vulnerable group. A key aspect of the citizen science approach was the preliminary meeting held in February 2019. Diana Margot Rosenthal (DMR) presented the aims of the project to a group of U5TA mothers ($n \sim 15$ citizens), charity service users, and staff. This meeting and the involvement of potential participants at an early stage in the study development was to ensure that all stakeholders contributed to the study design. DMR discussed the ESCA principles in layperson terms, including the benefits of participation and potential outcomes of research dissemination, and, together with the charity, raised the issue of environmental health and access to health services. DMR pitched research question ideas to potential participants based on her discussions with cross-sector stakeholders and asked for feedback about which were the most important issues that needed public awareness. U5TA mothers discussed their challenges and anxieties of the TA environment and the impact that it could be having on their children's health. DMR tailored the research question and objectives to reflect these concerns. Key co-design decisions also arose from this meeting, including the use of mobile smartphones and a mobile app for data collection, the use of the mobile app "WhatsApp" [36] to communicate during the study, and the feasibility of house visits to see TA housing conditions. The study had three parts: (I) Mobile App Housing Survey; (II) House Visits; (III) Collaborative Meetings.

2.5.2. Part I: Mobile App Housing Survey

Participants collected data using a mobile app survey developed for this study. Questions were related to (1) participants' TA environment (reported in this manuscript) and (2) aspects of the wider neighborhood (which will be reported elsewhere). The data elements pertaining to the housing environment captured per survey entry were: (1) photograph; (2) category of photograph location within housing; (3) descriptive text in response to the question "What are you showing in the photo?" and (4) first part of participants' postcode. The free text descriptive captions were for participants to annotate the pictures with and reflect how the TA housing conditions shown in their image acted as barriers to their child's health. Examples were given as prompts (Table 1), which were also collected in Part II (House Visits). Participants were able to submit multiple survey entries per category since only one photo and category could be recorded per entry.

Surveys were administered using the mobile app "ArcGIS Survey123" [37,38] (Appendix A). To mitigate the barrier of digital exclusion, each participant was loaned an identical smartphone with 15 GB of credit. A communal WhatsApp group was set up during the study to allow opportunities for participants to contact each other and provide any form of support, whether it was technological or social. Participants were assigned code names to maintain anonymity and reduce the risk of bias; these codes were used for survey submissions and in the WhatsApp group. Throughout the study, DMR closely monitored the group to ensure names and contact details stayed anonymized.

Table 1. Observation data collected in house visits.

Description	Observation Data Collected
<ul style="list-style-type: none"> • Built Environment—Housing • Community-Level Barriers and Facilitators • Photographs • Audio-recorded observation notes 	<ul style="list-style-type: none"> • Type of temporary accommodation and housing conditions • Ease of access to and within the property • Safety risks • Infestations/vermin • Dampness/mold • Structural defects • Noise • Temperature control, poor ventilation • Space (e.g., for a baby to crawl) • The condition of the restrooms and the number of people sharing it • The size/condition of shared rooms • The location of the kitchen; private or shared • Cleanliness

2.5.3. Part II: House Visits

House visits were conducted by DMR to provide a more comprehensive account of the survey results. House visits included observational notes of the items recorded in the survey using an audio-recorder and digital photos. Participants guided DMR through the TA accommodation and pointed out issues that were of concern to them while DMR observed the environment more broadly. In addition, DMR also examined barriers that had been identified in the frameworks as well as a review of the literature [7] and the Housing Health and Safety Rating System (HHSRS) (Table 1) [39]. This included information about specific barriers, including safety risks, infestations, mold, infrastructural defects, poor ventilation, temperature control, and space (e.g., for a baby to crawl). U.K. local authorities use the HHSRS as a risk-based evaluation tool that assesses twenty-nine housing hazard categories ranked in order (1 = most serious and immediate risk to a person’s health and safety; 29 = least serious) and the effect that each may have on the health and safety of the occupants of a property [39,40]. During the analysis, DMR listed the prevalence of each hazard per house visit.

2.5.4. Part III: Collaborative Meetings

Five collaborative meetings were held that occurred alongside data collection (Parts I–II) to gather participants’ feedback about the process, including any challenges they were encountering. The meeting was an informal, collaborative discussion lasting 45–60 min. Meetings were overseen primarily by DMR as well as charity staff, who were all trained facilitators when available. Participants were reimbursed for travel expenses and were given £10 vouchers for each collaborative meeting they attended. Three of the five meetings were audio-recorded and transcribed verbatim. The other two meetings were not recorded because they were shorter and were used as drop-in sessions to show participants how to use the app. We decided not to record these sessions as we wanted to keep them informal. Instead, DMR captured any important feedback through notetaking. In the collaborative meeting recordings, participants were coded as “Participant.CM1”, “Participant.CM2”, “Participant.CM3”, and so forth to maintain confidentiality.

2.5.5. Pilot and Refinement of Study Tools

The mobile app housing survey was piloted over a two-week period with five participants. Following this pilot, in addition to feedback from two collaborative meetings, adjustments were made to the survey. This included the additional types of housing-related categories (e.g., ventilation, heating system) and word boxes where the participant could provide more detail around the submitted photo.

2.6. Recruitment

In September 2019, a small population of U5TA mothers was conveniently sampled from the Magpie charity with specific inclusion and exclusion criteria (Table 2). We decided only to recruit mothers (rather than fathers) for this study as they were the key demographic that the charity worked with, which included single parents and caregivers. The study was advertised during programming and workshops, with potential participants invited to leave their contact information on a sign-up sheet. During opening hours, DMR spoke with potential participants and provided them with written information about the study in English. Those interested in participating were asked to complete a consent form. Consent forms were not introduced until the participant had a chance to read or have the researcher read the information to them, understand the information, and ask any questions. At this time, participants were informed that they needed to return the phones at the end of the study.

Table 2. Participant criteria for pilot and main study.

Inclusion Criteria
• Be a service-user of the charity
• Be in temporary or insecure accommodation * at the time of the study
• Be staying in London in a Newham or non-Newham postcode
• Pregnant and/or mother of children aged <5 years
• Ability to communicate in English
• Be willing to send/receive text messages
• Be willing to have a house visit by the researcher
• Be willing to collect data on a mobile app
• Be >16 years of age
Exclusion Criteria
• Refuse or are unable to provide informed consent
• Father of children aged <5 years
• Have significant psychiatric comorbidity, cognitive impairment, which may impair ability to provide informed consent (as documented in The Magpie Project’s client records)
• Plan to discontinue support and services at the charity within the study period

* Note: The European Federation of National Organizations working with the Homeless (FEANTSA) definition, the European Typology of Homelessness and Housing Exclusion (ETHOS) [41].

2.7. Analysis

Data analysis was led by DMR with supervision from Dr. Celine Lewis (CL) and Dr. Marcella Ucci (MU). In order to assess the suitability of citizen science as an approach, i.e., “whether this approach produced reliable data that could be used for scientific purposes [42]”, we specifically looked at whether there was a concurrence between the surveys (conducted by the participants) and the house visits (conducted by the researcher). Comparing volunteer data with that collected by “professionals” has been identified as an important method of evaluating citizen science projects for data quality [42]. A further check was the collaborative meetings where findings were discussed among the group.

Each data set (survey, house visit, collaborative meetings) was analyzed separately in the first instance and then compared in the final stage during triangulation. We conducted thematic analysis using a six-stage framework [43]. Data familiarization was completed when all audio recordings were transcribed verbatim, photos saved, and survey responses downloaded from the database (Step 1). Initial a priori codes were generated using examples from Kingfisher’s Unfit Housing U.K. Research Report [44]. We also took into consideration how participants self-categorized the photos they had uploaded, which were

sense-checked. Each survey and house visit photo was assigned a code (Step 2). These codes were collated into themes guided by the theoretical frameworks (Step 3). These were reviewed by CL and MU to ensure consistency within the themes (Step 4–5) [45] until no new themes emerged (data saturation). HHSRS hazards and their risks were then assigned to each theme so that the themes could be compared to an established framework of environmental indicators. Supportive quotations were pulled from the collaborative meetings when the participants and DMR discussed the study and various housing issues. Text taken from participants' survey entries was recorded verbatim, and a word cloud of optional descriptions submitted by participants was created. Results were written up thematically and checked for agreement of the analysis with the supervisory team (Step 6) [43].

In order to triangulate the data, a two-step process was conducted: (1) whether the theme and HHSRS hazard were present; and (2) whether the same information and themes appeared across the three different collection methods and showed agreement [29,46]. A positive sign (+) indicated that the theme and hazard were both present, while a negative sign (−) indicated that the theme was present, but not the hazard. A double negative sign (− −) indicated that neither the theme nor the hazard was present. NA meant that the data were not applicable or not available to identify or assess the presence of a specific hazard.

3. Results

3.1. Mobile App Housing Survey

The pilot study occurred over two weeks (16 September 2019–30 September 2019). Five participants consented to participate, with three participants submitting 12 survey entries. The main study occurred over one month (16 October 2019–13 November 2019). A total of 15 participants consented to participate, and 11 completed the survey for a cumulative total of 48 entries. Overall, the 48 entries were reduced to 34 entries after the removal of duplicate/incomplete entries. The mean number of entries per participant was 4 (mode: 1, range: 0–12). Of the five pilot participants, four took part in the main study because the questions had been substantially revised; the fifth participant did not continue in the study because they were rehoused in TA outside of London and no longer met the inclusion criteria. One participant did not collect any data because they exceeded the 15 GB data credit limit early in the study period. Due to insufficient Wi-Fi access or time before the study concluded, other participants ($n=6$) had not finished submitting saved survey entries and/or ran out of the 15 GB airtime credit. The most frequently reported TA post codes were: E7, E13, IG3, IG5, N8, RM6, RM9, which indicated that participants also lived in TA outside LBN due to being relocated by local authorities in addition to the distances they traveled to access the charity's free services.

3.2. House Visits

Four house visits were conducted between November–December 2019. House visits had to be rescheduled several times due to conflicting appointment times (e.g., GP, housing office, social services) and two rescheduled from January 2020 for February–March 2020, which were later canceled due to the onset of the COVID-19 pandemic. Over this period, at least two participants moved out of borough, and one participant dropped out on the first day due to being moved outside of London.

3.3. Collaborative Meetings

Five collaborative meetings were held on Wednesdays, 16 September 2019–25 November 2019. During Meeting 2, after the pilot had concluded, pilot participants were asked to comment on the app accessibility, functionality and usability, layout of the survey, and data collection measures. The participants recruited for the main study were also present and provided feedback based on print-out copies of the surveys. From this feedback, the participants and DMR determined what worked well and what did not, which led to

further refinement. In Meeting 4, the main study was at the halfway point with the next round of participants. All participants (both pilot and non-pilot) discussed any issues or concerns and feedback regarding the survey and app changes with DMR. In the last meeting after the survey closed, participants were given printed copies of maps and images to see the data they had all been collecting; this was the raw, uncleaned data. Participants commented on aspects of the data they had collected and their experiences in the study. These comments fed into the analyses.

3.4. Thematic Analysis

Eight overarching themes were identified during the thematic analysis: (i) overcrowding and shared facilities, (ii) dampness/mold growth, (iii) poor/inadequate kitchen/toilet facilities, (iv) infestations/vermin, (v) structural problems/disrepair, (vi) unsafe electrical systems and appliances, (vii) excessively cold due to inadequate temperature regulation and (viii) unsafe surfaces that risk causing trips or falls. Each theme was matched to the corresponding HHSRS Categorical Hazard with a description of the health implications (Table 3). For each theme and HHSRS, results were triangulated to identify where there was agreement or disagreement across the three data collection methods (Table 3). The results showed significant agreement (+sign) of findings across all three data collection methods. The high level of agreement among data collected by the participants and researcher suggests that the data were of suitable quality and that the citizen science approach was suitable. This was further supported by the high level of agreement through collaborative meetings. During the analysis, some themes appeared to overlap because there was a causal relationship found between them [47]; for example, a structural problem or disrepair (e.g., broken windows) caused excessively cold temperatures. If there was overlap, each theme was analyzed on its own, and then we looked at what relationships existed. Themes needed to be analyzed separately because some did not have causal relationships.

Table 3. Multi-methods triangulation of housing environment findings.

Thematic Category	HHSRS Hazard Category and Description	Health Effects (Taken from HHSRS)	House Visits	Participant Surveys	Collaborative Meetings
I. Overcrowding and Shared Facilities	11. Crowding and space Hazards associated with lack of space for living, sleeping, and normal household or family life	-Psychological distress and mental disorders, increased risk of hygiene issues, accidents, and personal space and privacy compromised. -Increased risk of infection (e.g., COVID-19)	+	+	+
	13. Lighting Threats to physical and mental health associated with inadequate natural or artificial light, including the psychological effects associated with the view from the property through glazing	Depression and psychological effects due to lack of natural light. Eye strain from glare and inadequate light	+	+	NA
	14. Noise Threats to physical and mental health due to exposure to noise within the property or within its curtilage	Psychological and physiological changes resulting from lack of sleep, poor concentration, headaches, and anxiety	+	NA	+
	17. Personal hygiene, sanitation, and drainage Threats of infections and threat to mental health associated with personal hygiene, including personal and clothes washing facilities, sanitation, and drainage	Stomach and intestinal disease, skin infections, and depression	+	+	+

Table 3. Cont.

Thematic Category	HHSRS Hazard Category and Description	Health Effects (Taken from HHSRS)	House Visits	Participant Surveys	Collaborative Meetings
II. Dampness/Mold Growth	1. Damp and mold growth Health threats due to dust mites, mold or fungal including mental and social wellbeing health threats associated with damp, humid, and moldy conditions	Allergies, asthma, effects of toxins from mold and fungal infections	+	+	+
III. Poor/Inadequate Kitchen/toilet Facilities	16. Food safety Threats of infection from poor provision and facilities to store, prepare, and cook food	Stomach and intestinal disease, diarrhea, vomiting, stomach upset, and dehydration	+	+	+
	19. Falls associated with baths Falls associated with a bath, shower, or similar facility	Physical injuries: cuts, lacerations, swellings, and bruising	+	+	NA
IV. Infestations/Vermin	15. Domestic hygiene, pests, and refuse Health hazards due to poor design, layout, and construction, making it hard to keep clean and hygienic, attracting pests, and inadequate and unhygienic provision for storing household waste	Stomach and intestinal disease, infection, asthma, allergies, disease from rats, and physical hazards	+	+	+
V. Structural Problems/Disrepair	26. Collision and entrapment Risks of physical injuries from trapping body parts in architectural features such as trapping fingers in doors and windows and colliding with objects such as windows, doors, and low ceilings	Physical injuries such as cuts and bruising to the body	+	+	+
	29. Structural collapse and falling elements ** The threat of the dwelling collapsing, or part of the fabric being displaced or falling due to inadequate fixing or disrepair or as a result of adverse weather conditions	Physical injuries	+	+	+
VI. Unsafe Electrics	23. Electrical hazards Hazards from electric shock and electricity burns	Electric shock and burns	+	+	+
	24. Fire Threats to health from exposure to uncontrolled fire and associated smoke. It includes injuries from clothing catching fire, a common injuring when trying to put a fire out	Burns, being overcome by smoke, or death	+	+	+
	25. Flames, hot surfaces, and materials Burns or injuries caused by contact with a hot flame or fire, hot objects, and non-water-based liquids. Scalds caused by contact with hot liquids and vapors	Burns, scalds, permanent scarring, and death	+	+	NA
VII. Excessively Cold Due to Inadequate Temperature Regulation	2. Excess cold ** Threats to health from cold indoor temperatures. A healthy indoor temperature is 18 to 21 °C	-Respiratory conditions: flu, pneumonia, and bronchitis -Cardiovascular conditions: heart attacks and strokes	+	+	+

Table 3. Cont.

Thematic Category	HHSRS Hazard Category and Description	Health Effects (Taken from HHSRS)	House Visits	Participant Surveys	Collaborative Meetings
VIII. Unsafe Surfaces That Risk Causing Trips or Falls	20. Falls on the level surfaces Falls on any level surface such as floor, yards, and paths, including falls associated with trip steps, thresholds, or ramps where the change in level is less than 300 mm	Physical injuries: bruising, fractures, head, brain, and spinal injuries	+	+	NA
	21. Falls associated with stairs and steps Falls associated with stairs and ramps where the change in level is greater than 300 mm. It includes internal stairs or ramps within a property, external steps or ramps associated with the property, access to the property and to shared facilities or means of escape from fire and falls over stairs, ramp or step guarding	Physical injuries: bruising, fractures, head, brain, and spinal injuries	+	+	+
	22. Falls between levels Falls from one level to another, inside or outside a dwelling where the difference is more than 300 mm. Including falls from balconies, landings, or out of windows	Physical injuries	+	+	+
	28. Ergonomics Threats of physical strain associated with functional space and other features at the dwelling	Strain and sprain injuries	+	+	+

NA stood for either not applicable or not available. For example, there was no data applicable in participant surveys for the thematic category overcrowding under Hazard 14 (Noise) because there was not a way to assess noise from the survey photos, nor did the participants report it in the textbox. A positive sign (+) indicated that the theme and hazard were present, while a negative sign (-) indicated that the theme was present, but not the hazard. ** Note: This is based on the participants and DMR reporting and observations of large cracks in the walls and foundation in addition to significant moisture damage. Exact measurements for temperature, moisture, and the degree of structural damage were not collected.

3.4.1. Overcrowding and Shared Facilities

Overcrowding and sharing facilities with different households was a consistent problem among most participants' TA and found across all three data collection methods. In this study, overcrowding was defined as a lack of adequate space for the U5TA to play and explore and the OECD definition for "Housing Overcrowding" (e.g., the number of family members sharing a room) [48]. One cause of overcrowding reported by participants was that flats (including studio flats) were shared with housemates who were not family [49,50]. This was corroborated during the collaborative meetings, where participants discussed the difficulties of living with other people as highlighted by comments that they were "not good housemates" (speakers unknown) and that "Everyone has housemates. That's why it's temporary/shared accommodation. Everyone is going to have a housemate and share with at least one other family". (Participant.CM7) These comments were confirmed during house visits, where overcrowding was clearly occurring. DMR observed a shared house of five families with two toilets and only one shower/tub; each family was assigned one of the five bedrooms, which created an issue of personal hygiene and no room for the children to move freely in the bedrooms. In addition, in two houses, there was no safe space for a baby to crawl, play or explore; therefore, the infants needed to stay in a buggy or highchair. This finding was supported by an image taken by a participant in the housing survey where they wrote: "That's the space for my baby to crawl (Figure 2; Participant.Survey15)".

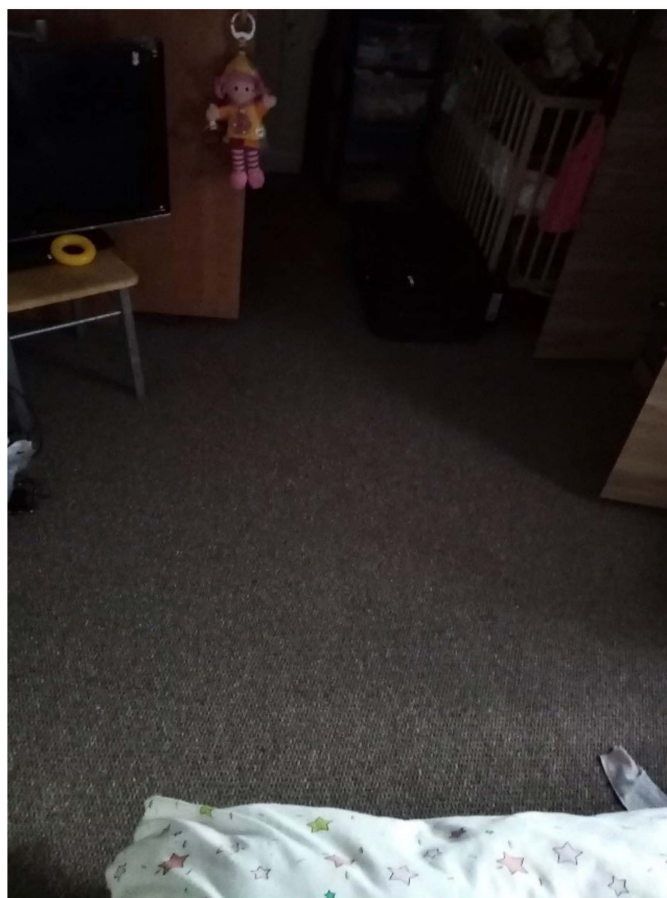


Figure 2. “That’s the space for my baby to crawl.”—Participant.Survey15.

Personal hygiene was another factor associated with overcrowding and sharing facilities with non-family members. Participant.CM7 described the everyday challenges of living in a shared house with so many families, especially with school-aged children. In this particular example, there were fifteen people living together in the shared house: four families with “10 school children and only two toilets . . . ”. This mother described what it was like in the morning when everyone was trying to get access to the toilet: “There is rush to the toilet in the morning . . . it’s like a race against the other people because I’m living downstairs, there’s no toilet”. For this participant, the rush was also heightened because of the need to get their children ready and out of the house in time for school. Many participants also confirmed the poor ratio of toilets to occupants in several properties, with multiple school-aged children all needing to use the toilet around the same time. One participant, Participant.Survey17, expressed their upset through the housing survey about sharing a bathroom at a bed and breakfast (B & B) where the toilet was often left in an unclean state: “Just got in now and saw the mess that was made by the other housemates of the B & B”. Other issues associated with overcrowding included doing laundry. In surveys and collaborative meetings, participants in shared houses with one washing machine articulated the discomfort and challenges of having to wait five-plus days to do their laundry, especially with one or more U5TAs who use up their clean clothing and/or bibs very quickly during the week. In the surveys, 6 of the 11 participants, who submitted entries, said they experienced some sort of overcrowding and difficulties sharing facilities.

3.4.2. Dampness/Mold Growth

Dampness and/or mold growth, a Category 1 Hazard, was a prominent theme and the most severe HHSRS category hazard found within TA properties across all data collection methods. Most survey participants (6 out of 11) wrote and photographed mold growth and

dampness in their TA (Figures 3–5, Surveys) and linked it to difficulties with their own or their children’s asthma during the collaborative meetings. Furthermore, participants reported mold growth in bathrooms and kitchens as well as bedrooms on their curtains (Figure 4, Participant.Survey10). Participant.Survey11 reported dampness that appeared to cover an entire wall, which was corroborated during the house visit (Figure 5). Mold and dampness were identified in three out of four house visits. Other participants reported mold growth and/or dampness in the collaborative meetings, including one participant who had not reported it in the survey because “I don’t want to show photos of my house because it’s not a good place... There is mould I wouldn’t want you to see that”. (Participant.CM6).



Figure 3. “Mould everywhere.”—Participant.Survey10.

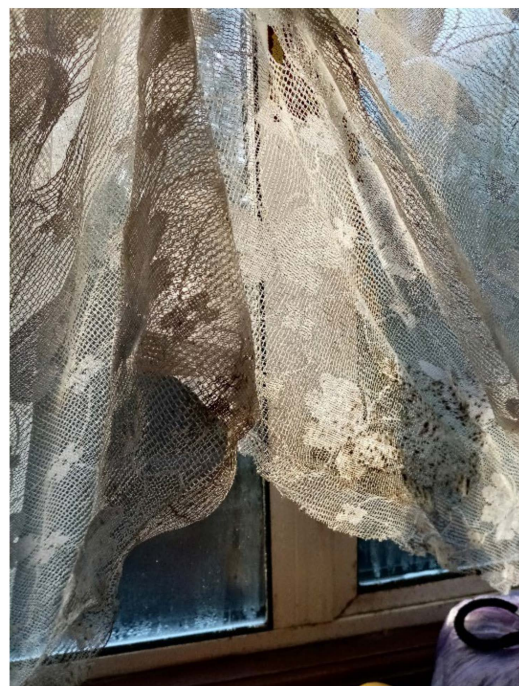


Figure 4. “Mould in the curtains.”—Participant.Survey10.



Figure 7. “Broken fridge”—Participant.Survey1.



Figure 8. “Broken oven”—Participant.Survey1.

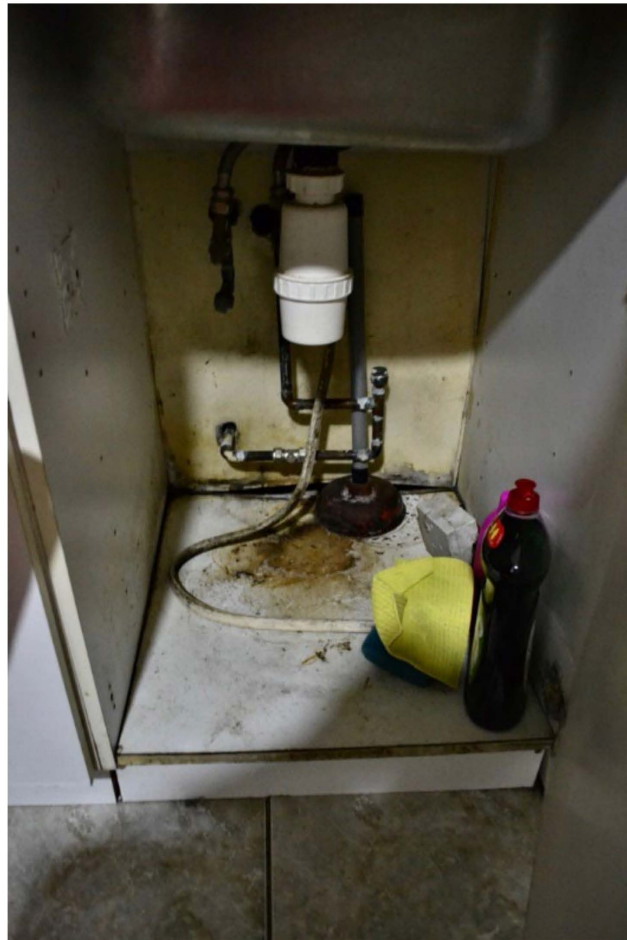


Figure 9. House visit.

3.4.4. Infestations/Vermin

Infestations and/or vermin were widely reported by participants as a common issue in TA. In the survey, Participant.Survey11 showed a cockroach infestation (Figure 10). This survey response was supported during the house visit, where cockroaches were seen throughout the TA. The tenants had clearly tried to address this problem by storing all their food in air-tight, sealed containers and by keeping the house tidy. Bed bugs were also a major concern. In Figure 11 from the survey, Participant.Survey13 discussed having an infestation of bed bugs in their TA: “There is a bugs in the room and bit me and my baby. I changed the room to another room but the problem still all the house has bugs. [sic]”. Similarly, in the collaborative meetings, one participant mentioned the frequency with which mattresses were changed in TA, highlighting that this was a significant issue since multiple occupiers were using the same mattress each time a new TA resident moved.

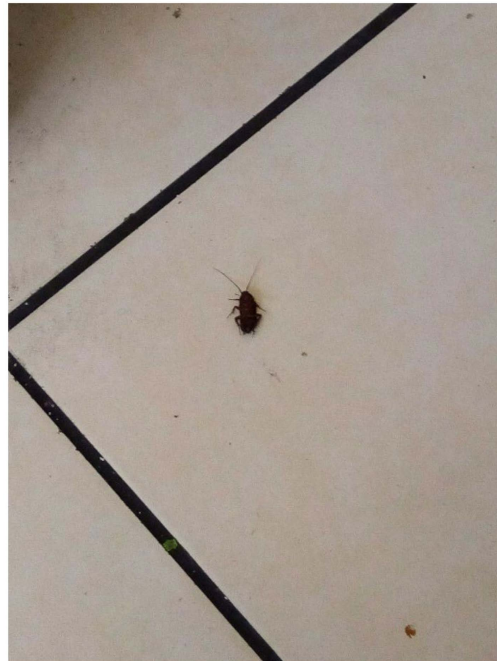


Figure 10. “Cockroach”—Participant.Survey11.

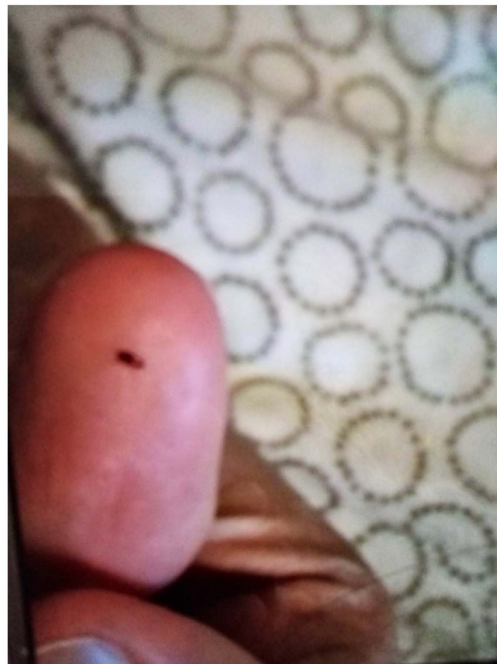


Figure 11. Participant.Survey13.

3.4.5. Structural Problems and/or Disrepair

Most TA had structural defects or damage, which could be potentially unsafe and unhealthy indoor living environments. In Figure 12 (Participant.Survey1), the participant reported the floorboard coming up next to the one shower/bath being shared by five families. During the house visit, Figure 13a,b (house visit) were taken, and DMR clarified the extent of this issue as a tripping hazard increasing the risk for serious physical injuries, but also for water to seep underneath the floor and produce further mold exposure, which could be seen on the ceiling ventilation fan. This house was in disrepair from every corner and had each one of the HHSRS environmental hazards listed in Table 3. In the same TA, the extent of a large reported “Cracked wall” (Participant.Survey1) that extended from the floor to ceiling on the top floor (Figure 14, house visit) was observed, which appeared to

be water damage coming from the roof, and made the participant feel distressed about it being a structural issue and becoming worse with time and/or feeling neglected. In a different participant house visit, a mother and son (~2 years old) lived in a studio located in a hidden alleyway next to a garage in LBN; the toilet facility had cracks in the walls and missing floor tiles (Figure 15, house visit). The participant also commented that they had difficulty with washing their child in that shower with the small opening.

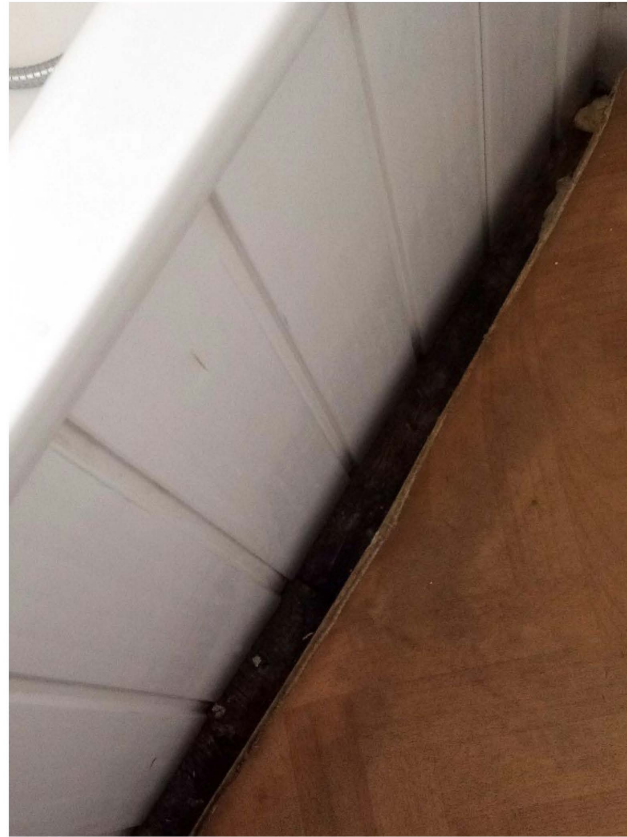


Figure 12. Participant.Survey1.



(a)



(b)

Figure 13. (a) House visit. (b) House visit.

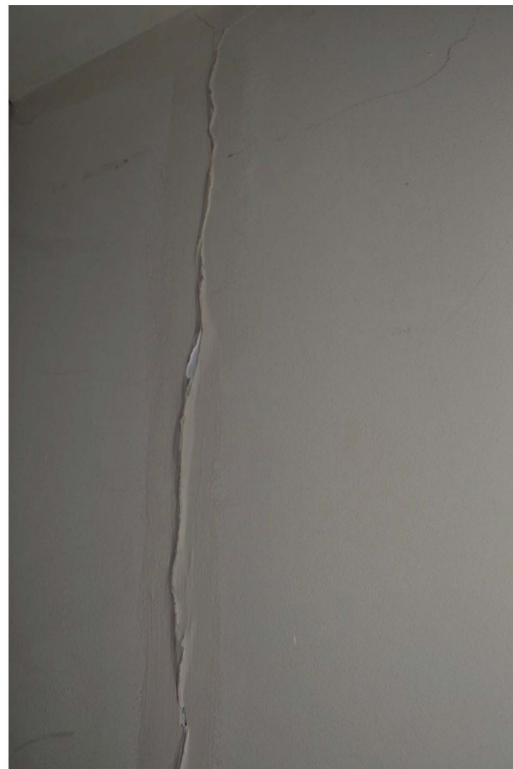


Figure 14. House visit.



Figure 15. House visit.

In almost every survey, participants reported a broken window that was being kept closed with cellophane/duct tape: “I have a broken glass window in the toilet as well the aluminum [sic], the window stays open I cannot shut it (Figure 16, Participant.Survey10)”.

As a result of the broken windows, TAs were excessively cold, and some were even made worse by a broken boiler, Participant.Survey10; see Section 3.4.7).

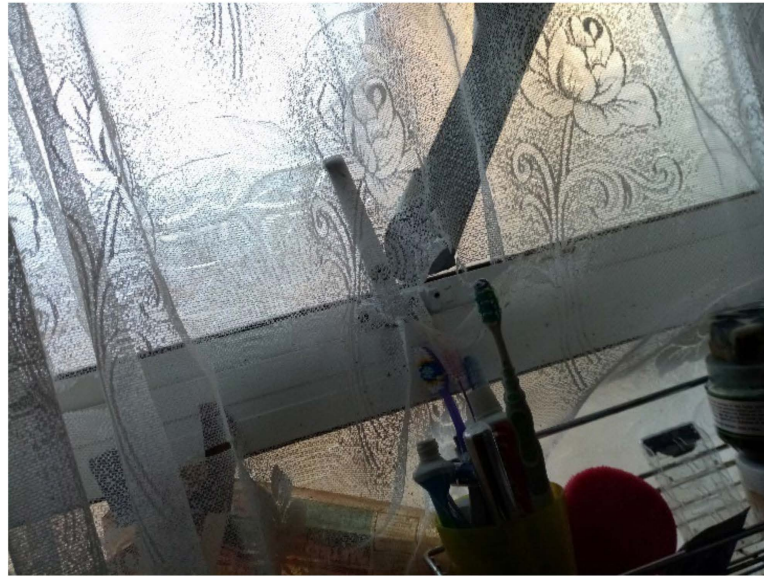


Figure 16. “Broken windows and humidity”—Participant.Survey10.

3.4.6. Unsafe Electrical Systems and Appliances

Unsafe electrical systems and appliances were a prominent finding across the data collection methods. Multiple TA sites documented exposed electrical outlets (Figure 17, house visit) or wires coming out of the walls. Overall, many TAs were not suitable for under 5s and were not childproofed. For example, during one house visit, a participant reported that when they took a shower, they needed to put their son in the highchair to protect him from the numerous environmental hazards, including easy access to electrics, e.g., the stove knobs at a standing level for the child (Figure 18, house visit). The kitchen was also wide open in this studio space and not childproofed, therefore was a constant risk that a child could turn the stove on which could lead to the child burning themselves or causing a fire.



Figure 17. House visit.



Figure 18. House visit.

3.4.7. Excessively Cold Due to Inadequate Temperature Regulation

Many participants reported broken windows and/or boilers causing excessively cold temperatures, a Category 2 Hazard, which could be detrimental to child health. Participant.Survey10, a mother of two U5TA, had been trying to get the local authority to repair their broken boiler for more than a month (Figure 19). They also described the window above their son's bed: "Window is broken and the rooms are very cold because of this" (Figure 20, Participant.Survey10). A recurring theme across all forms of data collection was the need to use cellophane tape to patch up windows (Figure 21, house visit) and false doors, which were possibly former windows or fire escapes (Figure 22, house visit) to keep the cold air from coming in. This was further corroborated during the house visit (Figure 21) and the indoor temperature was comparable to the outdoor temperature $5/6^{\circ}\text{C}$ that day [51]. The participant informed DMR that their son had sickle cell disease and feared that this environment only made him more ill. A total of 3 out of 11 participants who completed the surveys reported these issues; when they did not report them, they discussed them in the collaborative meetings, so more than 50% of participants were experiencing these problems.



Figure 19. "Broken boiler. The boiler is not working". Participant.Survey10.

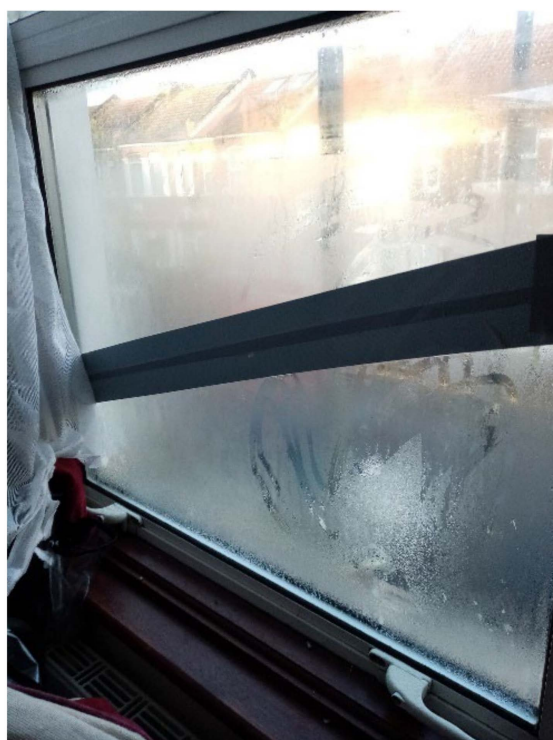


Figure 20. Participant.Survey10.

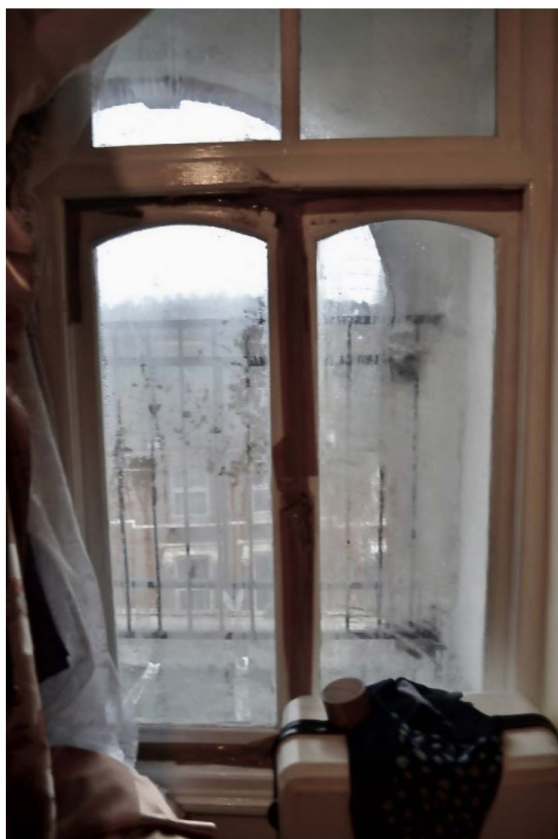


Figure 21. House visit.



Figure 22. House visit.

3.4.8. Unsafe Surfaces That Risk Causing Trips or Falls

Unsafe surfaces with changes in level greater than 300 mm risked causing trips or falls. There was agreement across the data collection methods that TA housing had dangerous staircases leading to the property, within the property, or both (Figures 23–28). A total of 7 out of 11 participants in the surveys reported these issues. In Figure 23, Participant.Survey15 described: “That is the staircase leading to my apartment. It is very strenuous to go on this staircase into my apartment especially carrying my baby. One day, I nearly fell on the stairs with my baby”. Participant.Survey16 reported that the “Iron was slippery” in reference to the stairs leading to the property. During Participant.Survey16’s house visit, DMR also photographed the stairs (Figure 24, house visit) and climbed the stairs; which were very steep, damp, and appeared to be fire escapes; this could be particularly dangerous for a mother carrying their toddler plus buggy in the rain (Figure 25, house visit).



Figure 23. “The staircase leading into my apartment.”—Participant.Survey15.



Figure 24. House visit.



Figure 25. House visit.

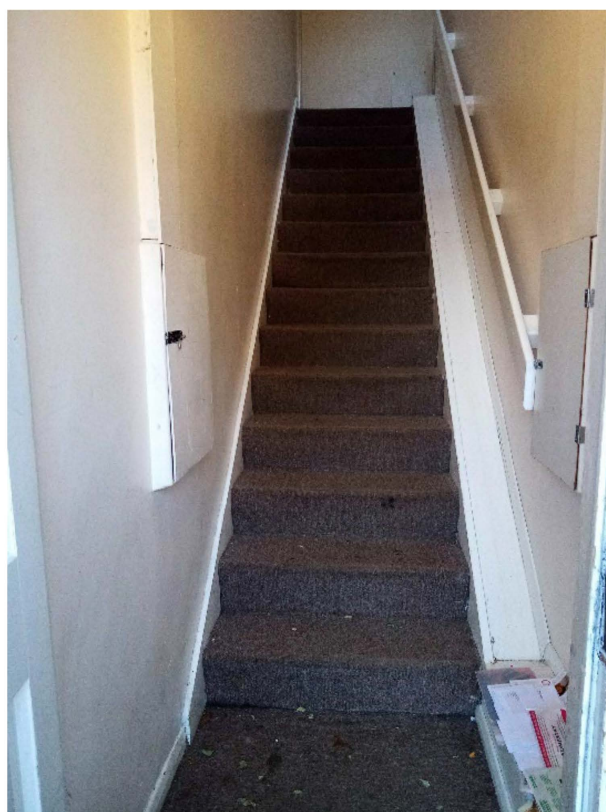


Figure 26. Participant.Survey12.

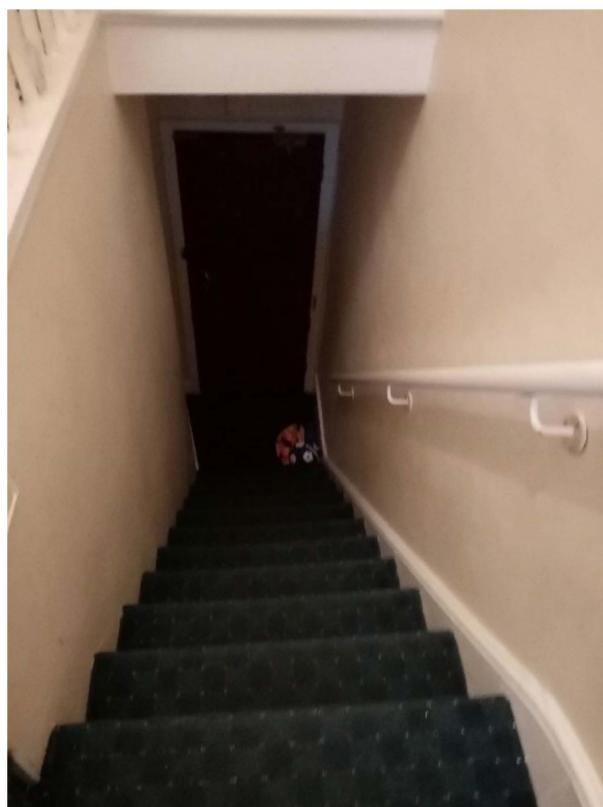


Figure 27. Participant.Survey10.

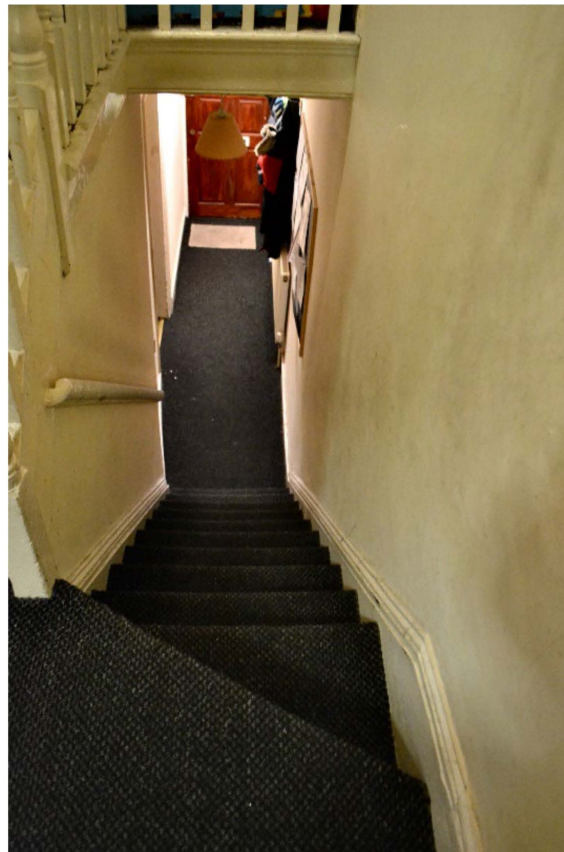


Figure 28. House visit.

Inside TA properties, the stairs were very steep, and no safety provisions were in place (e.g., child gate), nor accessible in the case that a child had a disability (Figures 26 and 27, housing surveys; Figure 28, house visit). Different participants reported the difficulties and inconvenience of these stairs with the buggy, especially since there was nowhere on the ground floor to park it: “The stairs is not convenient for buggy, whenever we are going out we have take buggy down first, especially when we go for shopping, is really difficult [sic] (Figure 27, Participant.Survey10);” and “The stairs are inside the property and it is very dangerous for kids [sic] and I have to take the buggy upstairs every time (Figure 26, Participant.Survey12)”.

4. Discussion

The aim of this study was to describe the indoor environmental barriers to optimal health for children under the age of five experiencing homelessness by virtue of living in temporary accommodation (U5TA). This is the first citizen science study that we are aware of to explore indoor environmental barriers with mothers of U5TA in the U.K. and worldwide. Our findings revealed that the most commonly reported barriers were dampness/mold growth, overcrowding and shared facilities, and unsafe stairs that could cause trips or falls. Barriers occurred in clusters and compounded each other (e.g., broken window, broken boiler, structural disrepair), giving rise to a variety of problems and sometimes making each subsequent one worse (e.g., excess cold, hazards from window not being able to be shut, broken glass, mold/dampness). Although some of these hazards were known to exist in unfit housing before, none had been studied directly using a citizen science approach and with this marginalized group.

4.1. Benefits and Ethical Challenges of Citizen Science

The second aim of this study was to determine the suitability of a citizen science approach to address the primary aim through data reliability. We found numerous benefits

to using a citizen science approach in a community-based setting. Participants benefited by gaining experience of scientific methods, developing social capital in their own community of U5TA mothers, and demonstrating a sense of empowerment [52]. We were able to involve participants in the study design, data collection, and analysis, ensuring the findings were grounded in their experiences. Using this approach, we were able to co-design a new method of data collection, namely the mobile housing survey app, which coincided with the house visits. Tasks were designed to be simple to promote high accuracy, minimize bias, account for the demanding schedules of the participants, and easy to navigate regardless of technical skill. The collaborative meetings that were conducted during data collection enabled us to take participants' views and feedback into account, as well as provide an opportunity for participants to discuss the emerging findings, thus facilitating an iterative approach to the design and conduct of the study. This improved the openness and reliability of the research and increased the participation and engagement of citizens in the scientific research. In addition, there was a better understanding of the citizens' marginalization as well as their inclusion in informing policy and practice, a group normally excluded from both [21,52–56]. While our ambition had been to involve participants in further policy recommendations and results dissemination, unfortunately, this was not possible due to the pandemic.

Although there are many benefits to citizen science, it also raises a few ethical concerns and challenges. One concern is data quality and integrity, meaning the data collected by participants may not meet scientific standards due to a lack of participant training in scientific data management or research [52,57,58]. To address this concern and ensure reliable data that could be used for scientific purposes [42], we checked for concurrence between the surveys (conducted by the participants) and the house visits (conducted by the researcher) with the collaborative meetings where findings were discussed among the research team used as an additional check. Another potential concern is around data integrity and intellectual property [42]. Throughout the study, the aims and objectives, as well as rights and ownership of the data, were communicated clearly and openly with participants and other stakeholders through participant information sheets and continuous feedback and interaction with the researcher. Results were made publicly available and shared with the LBN local authority, with the aim that this would be a steppingstone toward transformational change. While working with a vulnerable group, the loaning of phones and distribution of vouchers raises potential ethical concerns around coercion. In order to address this concern, we were very clear from the outset that the phones were on loan only, and that the vouchers were an honorarium payment in acknowledgment of their contribution and time. The barrier of digital poverty was mitigated by loaning all participants identical smartphones with the same amount of data credit ensuring equal and equitable participation in the study. This practice also provided that equipment used for measurements were standardized and calibrated across participants. For future studies, researchers should also consider these ethical challenges and plan accordingly when conducting citizen science studies with vulnerable groups.

4.2. Health Implications

Many of the indoor barriers identified in this study have been shown to be significant hazards that have a detrimental impact on health. For example, dampness and mold, a Category 1 Hazard, increases the risk for allergies, asthma, exposure to toxins from mold and fungal infections, and potential threats to mental health and social wellbeing [39,59–62]. Asthmatic attacks, allergic reactions, and infections (from any over 40 types of pathogens) can also be triggered by bed bug infestations, another health hazard found in this study, whereby multiple occupiers were found to use the same mattress for various lengths of time [39,63]. U5TA were often found to be left in a buggy or pram as a safety provision because of lack of space and other hazards (e.g., mold, pests/vermin), but this can critically hamper development and meeting health milestones, even posing a significant and powerful risk for progression to a neurodevelopmental disorder or syndrome if not ad-

dressed [64,65]. Broken windows, structural problems/disrepair, unsafe electrics, staircases with a change in level greater than 300 mm, and the lack of safety provision (e.g., baby/child safety gates) were all found in this study and increase the risks of injury, collision or entrapment in addition to being markers of social deprivation and health inequality [39,66]. Finally, we found that indoor temperatures in TA were excessively cold, which is a Category 2 Hazard, and increased risk of respiratory conditions of flu, pneumonia, and bronchitis for the entire household and cardiovascular conditions of heart attacks and strokes for the adults [39].

4.3. Contribution to the Literature

Many of these findings have been identified elsewhere, however, using different methodologies. A recent report by the Children's Commissioner in England found TA were overcrowded, excessively cold, "frequently not fit for children", and the report concluded that "poor quality TA presents serious risks to children" [9,67]. In 2001, an audit into homeless families conducted by health visitors in the U.K. found that indoor environmental barriers such as shared toilets and kitchen facilities spread infection and encouraged an unhealthy diet [9,68]. Similar audits conducted more recently in the U.K., in 2018 and 2020, reported the health implications for families living in TA (poor nutrition, higher hospital admission, and poor mental health); however, these audits did not address any of direct causes from the built environment [69,70]. A contribution of this study is that it addresses this gap by providing visual evidence accompanied by the lived experience of the barriers to health that occur in the indoor housing environment, conducted in collaboration with experts by experience (i.e., U5TA and their mothers).

4.4. Policy Implications

This study has highlighted the importance of policy alongside greater monitoring of and accountability for the safety and regulations of TA to ensure that these environments promote optimal growth and development for U5TA to thrive in [45]. Ideally, local authorities should carry out a full inspection and a hazard assessment under the HHSRS before deciding if accommodation offered to an applicant is suitable [71,72]. In particular, they must verify that any accommodation is free of Category 1 hazards (Dampness/mold growth) and is fit for human habitation [73,74]. In this study, the lack of basic safety provisions for any of the hazards (e.g., unsafe electrics, broken windows, steep stairs, gas cooktops) showed these TA were not suitable and detrimental to the health and development of the children. As a transient population, it was difficult to imagine that the participants were solely responsible for safety provisions when they could be moved to a new TA with different housing layouts at short notice, could not afford such preventive measures, and/or did not know how long they would be living in that TA, i.e., three months or three years. Suitable housing conditions and availability must come to the forefront on the national agenda since the COVID-19 pandemic has likely exacerbated many of these risks and hazards by increasing the rates of homelessness.

4.5. Strengths and Limitations

A strength of this study is the citizen science approach with methodological triangulation, which facilitated a fuller, more complete picture of the topic. Furthermore, triangulating the findings from the three methods increased the validity of the findings [75] and provided a bi-directional, mutual exchange of ideas, learning, and resources as well as collective understanding [76], which is the ultimate goal of community engagement [77]. Citizen science projects have been prone to similar biases such as traditional biomedical research and speak "about" rather than "with" vulnerable groups, but we ensured that this citizen science project reduced social exclusion [21,76]. Rather than a top-down approach of having an auditor come in and tick off a box on a list, all these issues were seen through the lens of those living there and experiencing these problems, which were barriers to optimal

health. The ECSA's 10 principles were used and informed the design of the study to ensure we adhered to best practices [35].

A limitation of the study was the sample size and use of convenience sampling, which possibly increased the likelihood of selection bias; however, many participants lived and traveled in and out of the borough to access the charity as well as other resources, and due to their transient circumstances, this was the best approach to sampling and recruitment. Due to limited funding of the study, translations of all materials and interpreters could not be provided, which limited the diversity of the TA population that could be represented. The inability to obtain the socio-demographic data was also a limitation in this regard, which would have provided important context to this study as potential indicators of health inequalities and inequities [78,79]. However, while the sampling approach and lack of demographic information mean that the study lacks objective information on the generalisability of the findings, many aspects are still of interest beyond the study sample itself. This innovative work can inform and facilitate evidence-based policy, further supporting the 2020 Marmot Review [6] that housing has an impact on health and is a driver of health inequalities and inequities [80,81].

On a usability level, participants reported frustration with the inability to take more than one photo per survey and the need to submit multiple entries on the same indoor space (i.e., stairs, bathroom, kitchen) along with other mobile app features, which were all technological limitations of the app itself, combined with their other daily competing priorities. In the surveys, the number of entries was lower than expected, suggesting a nonresponse bias. Fewer house visits were conducted than anticipated due to the pandemic, but also participants later changed their minds and/or did not want to show their TA because they were embarrassed, did not want to get in trouble/feared altercation with their roommates/housemates, or both, which were issues that came to light during the collaborative meetings. Because of the pandemic, contact with the participants was lost, so they were not able to participate in further analyses and dissemination of the results. Unfortunately, the pandemic had an unprecedented impact on vulnerable groups, which could not be controlled for.

5. Conclusions

The early years are a short yet vital period to ensure the next generation have the best start in life; however, as highlighted by this study, U5TA faces numerous indoor environmental barriers that can have significant short- and long-term impacts on their health and wellbeing. Through a collaborative approach with U5TA families, this study showed how housing conditions affected their daily life and ability to care for their children. This study demonstrated how the co-presence of multiple established environmental hazards and poor living conditions as experienced by the citizens created “the perfect storm”, which adversely affects families and their children within a vulnerable group who are already experiencing several challenges. Future studies should continue to use citizen science as well as co-production, which are evidently suitable and important approaches to address health inequalities influenced by social determinants and the built environment by working together with experts with lived experience and ensuring their inclusion. Based on difficulties reported by participants about the survey, future citizen science studies in the public health field should consider all factors (accessibility, functionality, and usability) when developing the protocol and choosing the best mobile app for data collection, building on the latest evidence from the literature. Finally, future studies should also consider the use of citizen science approaches to data collection, which occur over a longer time period and with participants taking an active role in data collection as well as dissemination of results, including policy recommendations.

Author Contributions: Conceptualization, D.M.R.; methodology, D.M.R. with supervision of co-authors; software, D.M.R.; validation, D.M.R., M.U. and C.L.; formal analysis: D.M.R. with supervision of C.L., M.U. and M.L.; investigation, D.M.R.; resources, D.M.R. and M.L.; data curation, D.M.R.; writing—original draft preparation, D.M.R.; writing—review and editing, D.M.R. under supervision

of C.L. with feedback from all co-authors.; visualization, D.M.R. and M.U.; supervision, A.S., M.H., M.U., M.L., A.H. and C.L.; project administration, D.M.R.; funding acquisition, D.M.R. All authors have read and agreed to the published version of the manuscript.

Funding: The London Catalyst Fund provided funds for mobile app phones and research materials. CL is funded by an NIHR Advanced Fellowship (NIHR300099). All research at UCL Great Ormond Street Institute of Child Health is made possible by the NIHR Great Ormond Street Hospital Biomedical Research Centre.

Institutional Review Board Statement: UCL Data Protection Office registration under no. Z6364106/2019/03/157 obtained on 22 March 2019. UCL Research Ethics Committee (REC) Approval ID Number: 15097-001 was obtained on 30 May 2019. As advised by UCL REC, the Early Career Researcher (DMR) obtained a Disclosure and Barring Service (DBS) enhanced certificate for working with vulnerable groups. Collected data were anonymized, encrypted, and stored on a GDPR compliant, secure password-protected database (Amazon Web Services and Microsoft Azure).

Informed Consent Statement: Informed consent was obtained from all subjects involved in the study. Written informed consent has been obtained from participants to publish this paper.

Data Availability Statement: Data including Excel sheets and Figures can be made available upon special request, although they may not be republished elsewhere. Access to the ArcGIS database is not possible because this would be an ethics violation.

Acknowledgments: We would like to thank Muki Haklay and Extreme Citizen Science (ExCiteS) research group at UCL for their consult on citizen science especially mobile app recommendations. We would like to acknowledge our participants (now citizen scientists) of the Magpie Project and the charity. This is dedicated to all children experiencing homelessness and/or living in temporary accommodation, past and present.

Conflicts of Interest: The authors declare no conflict of interest. The funders had no role in the design of the study, in the collection, analyses, or interpretation of data, in the writing of the manuscript, or in the decision to publish the results.

Appendix A

The figure displays three sequential screenshots of a mobile survey application interface. The first screenshot, titled 'Housing Environment Survey', includes a sub-header 'Phase 2: Community Study: Main Study' and introductory text explaining the purpose of the survey. It asks users to photograph their current temporary or insecure accommodation and provides examples of what to look for, such as the condition of restrooms and shared rooms. Below this, there is a question about the first part of the user's post code. The second screenshot asks 'What are you showing in the photo?' and provides a list of categories with checkboxes: Flat, Shared Room, Hallway, Stairs/Staircase/Stairwell, Communal Space (for building), Lobby/Ground Floor, Outside: Window View, Outside: Ground/Property, Ventilation (Window, fan, etc), and Other. The third screenshot shows the 'Describe Photo' section, where users are asked to describe what they are showing in the photo. Below this, there is a 'Submission Date and Time' section with date and time pickers, and a 'Submit' button. The bottom of the third screenshot shows the text 'Powered by Survey123 for ArcGIS'.

Figure A1. Surveys.

References

1. Black, M.M.; Merseth, K.A. First 1000 Days and Beyond: Strategies to Achieve the Sustainable Development Goals. In *Developmental Science and Sustainable Development Goals for Children and Youth*; Springer: Cham, Switzerland, 2018; pp. 97–112. [CrossRef]
2. Cusick, S.; Georgieff, M.K. The First 1000 Days of Life: The Brain's Window of Opportunity. Available online: <https://www.unicef-irc.org/article/958-the-first-1000-days-of-life-the-brains-window-of-opportunity.html> (accessed on 15 March 2019).
3. Walker, S.P.; Wachs, T.D.; Gardner, J.M.; Lozoff, B.; Wasserman, G.A.; Pollitt, E.; Carter, J.A. Child development: Risk factors for adverse outcomes in developing countries. *Lancet* **2007**, *369*, 145–157. [CrossRef]
4. Centers for Disease Control and Prevention. CDC's Developmental Milestones. Available online: <https://www.cdc.gov/ncbddd/actearly/milestones/index.html> (accessed on 1 January 2022).
5. Moore, T.; Arefadib, N.; Deery, A.; West, S. *The First Thousand Days The First Thousand Days: An Evidence Paper*; Centre for Community Child Health: Parkville, VIC, Australia, 2017.
6. Marmot, M.; Allen, J.; Boyce, T.; Goldblatt, P.; Morrison, J. *Health Equity In England: The Marmot Review 10 Years On*; Institute of Health Equity: London, UK, 2020.
7. Transforming Early Childhood in England—UCL Press. Available online: <https://www.uclpress.co.uk/products/128464> (accessed on 18 September 2020).
8. OECD. OECD Affordable Housing Database. In *OECD-Social Policy Division-Directorate of Employment, Labour and Social Affairs*; OECD: Paris, France, 2022; Available online: <http://oe.cd/ahd> (accessed on 3 October 2021).
9. Rosenthal, D.M.; Lewis, C.; Heys, M.; Schoenthaler, A.M.; Ucci, M.; Hayward, A.; Lakhanpaul, M. Barriers to Optimal Health for Under 5s Experiencing Homelessness and Living In Temporary Accommodation in High-Income Countries: A Scoping Review. *Ann. Public Health Res.* **2021**, *8*, 1103. Available online: <https://www.jscomedcentral.com/PublicHealth/publichealth-8-1103.pdf> (accessed on 3 October 2021).
10. Speak, S. The State of Homelessness in Developing Countries. 2019. Available online: https://www.un.org/development/desa/dspd/wp-content/uploads/sites/22/2019/05/SPEAK_Suzanne_Paper.pdf (accessed on 19 January 2022).
11. National Institute of Statistics, Ministry of Planning Cambodia. *Estimation Of Homeless Children in Seven Cities in Cambodia*; National Institute of Statistics: Phnom Penh, Cambodia, 2017; Available online: <http://www.cpcnetwork.org/wp-content/uploads/2017/01/Estimation-of-Homeless-Children-Across-Seven-Cities-in-Cambodia.pdf> (accessed on 13 January 2022).
12. UNDESA Voice. First-Ever United Nations Resolution on Homelessness | DISD. Available online: <https://www.un.org/development/desa/dspd/2020/03/resolution-homelessness/> (accessed on 13 January 2022).
13. The Economic and Social Council. *E/RES/2020/7, Affordable Housing and Social Protection Systems for All to Address Homelessness*; United Nations: New York, NY, USA, 2020; Available online: <https://undocs.org/E/RES/2020/7> (accessed on 13 January 2022).
14. Zima, B.T.; Wells, K.B.; Freeman, H.E. Emotional and behavioral problems and severe academic delays among sheltered homeless children in Los Angeles County. *Am. J. Public Health* **1994**, *84*, 260–264. [CrossRef] [PubMed]
15. Vostanis, P.; Grattan, E.; Cumella, S. Mental health problems of homeless children and families: Longitudinal study. *BMJ* **1998**, *316*, 899–902. [CrossRef]
16. Jetelina, K.K.; Reingle Gonzalez, J.; Clutter, M.O.; Sanders, C.; Baidhya, S.; Schulte, M.C.; Tsai, R. Unmet physical and mental healthcare needs of children with a history of familial homelessness and unstable housing. *J. Soc. Distress Homeless* **2018**, *27*, 135–140. [CrossRef]
17. Cooper, C. *Citizen Science: How Ordinary People Are Changing the Face of Discovery*; Duckworth Publishers: London, UK, 2017; ISBN 9780715652346.
18. Haklay, M.; Motion, A.; Balázs, B.; Kieslinger, B.; Greshake Tzovaras, B.; Nold, C.; Dörler, D.; Fraisl, D.; Riemenschneider, D.; Heigl, F.; et al. ECSA's Characteristics of Citizen Science. *Zenodo* **2020**. [CrossRef]
19. United States Environmental Protection Agency. Ports Primer: 8.2 Citizen Science Projects. Available online: <https://www.epa.gov/community-port-collaboration/ports-primer-82-citizen-science-projects> (accessed on 15 July 2021).
20. Gearheard, S.; Aporta, C.; Aipellee, G.; O'Keefe, K. The Igliniit project: Inuit hunters document life on the trail to map and monitor arctic change. *Can. Geogr.* **2011**, *55*, 42–55. [CrossRef]
21. Den Broeder, L.; Devilee, J.; Van Oers, H.; Schuit, A.J.; Wagemakers, A. Citizen Science for public health. *Health Promot. Int.* **2018**, *33*, 505–514. [CrossRef]
22. PatientsLikeMe. PatientsLikeMe Live Better, Together! Available online: <https://www.patientslikeme.com/> (accessed on 13 November 2021).
23. Snik, F.; Rietjens, J.H.H.; Apituley, A.; Volten, H.; Mijling, B.; Di Noia, A.; Heikamp, S.; Heinsbroek, R.C.; Hasekamp, O.P.; Smit, J.M.; et al. Mapping atmospheric aerosols with a citizen science network of smartphone spectropolarimeters. *Geophys. Res. Lett.* **2014**, *41*, 7351–7358. [CrossRef]
24. UCL Research Ethics—UCL—University College London. Applying to the UCL REC. Available online: <https://www.ucl.ac.uk/research-ethics/ethical-approval/applying-ucl-rec> (accessed on 27 March 2020).
25. Unicef Module 1: Understanding the Social Ecological Model (SEM) and Communication for Development (C4D). Social Ecological Model. Available online: https://nanopdf.com/download/understanding-the-social-ecological-model-and_pdf (accessed on 14 January 2022).

26. Barton, H.; Grant, M. A health map for the local human habitat. *J. R. Soc. Promot. Health* **2006**, *126*, 252–253. [CrossRef]
27. Senabre Hidalgo, E.; Perelló, J.; Becker, F.; Bonhoure, I.; Legris, M.; Cigarini, A. Participation and Co-creation in Citizen Science. In *The Science of Citizen Science*; Springer: Cham, Switzerland, 2021; pp. 199–218, ISBN 978-3-030-58278-4. Available online: https://link.springer.com/chapter/10.1007/978-3-030-58278-4_11 (accessed on 22 January 2022).
28. Bekhet, A.K.; Zauszniewski, J.A. Methodological Triangulation: An Approach to Understanding Data. *Nurse Res.* **2012**, *20*, 40–43. [CrossRef] [PubMed]
29. Campbell, R.; Goodman-Williams, R.; Feeney, H.; Fehler-Cabral, G. Assessing Triangulation Across Methodologies, Methods, and Stakeholder Groups: The Joys, Woes, and Politics of Interpreting Convergent and Divergent Data. *Am. J. Eval.* **2018**, *41*, 125–144. [CrossRef]
30. Noble, H.; Heale, R. Triangulation in research, with examples. *Evid. Based. Nurs.* **2019**, *22*, 67–68. [CrossRef] [PubMed]
31. Reynolds, L. *The Housing Crisis Generation: How Many Children Are Homeless in Britain*; Shelter: London, UK, 2018.
32. Shelter. *Homeless in a Pandemic: 253,000 People Are Trapped in Temporary Accommodation*; Shelter: London, UK, 2020; Available online: https://england.shelter.org.uk/media/press_release/homeless_in_a_pandemic_253000_people_are_trapped_in_temporary_accommodation_ (accessed on 31 October 2021).
33. Trust for London, L.P.P. London Households in Temporary Accommodation. Available online: <https://www.trustforlondon.org.uk/data/temporary-accommodation-borough/> (accessed on 25 July 2021).
34. ONS. *UK Homelessness: 2005 to 2018—Assessment of the Comparability and Coherence of Existing UK Government Data Sources on Homelessness*; Office for National Statistics: Newport, UK, 2019. Available online: <https://www.ons.gov.uk/peoplepopulationandcommunity/housing/articles/ukhomelessness/2005to2018> (accessed on 16 January 2022).
35. ECSA (European Citizen Science Association). *Ten Principles of Citizen Science*; ECSA: Berlin, Germany, 2015. [CrossRef]
36. WhatsApp LLC WhatsApp. Available online: <https://www.whatsapp.com/> (accessed on 14 January 2022).
37. HOW TO: Create a Survey in Survey123. 2017, pp. 1–12. Available online: <https://schools.esriuk.com/wp-content/uploads/Getting-Started-with-Survey123.pdf> (accessed on 14 January 2022).
38. Esri ArcGIS ArcGIS Survey123. Available online: <https://survey123.arcgis.com/> (accessed on 14 January 2022).
39. Stafford Borough Council. Health and Housing Services Housing Health and Safety Rating System: The 29 Hazards. Available online: <https://www.staffordbc.gov.uk/housing-health-and-safety-rating-system-the-29-hazards> (accessed on 24 August 2021).
40. Office of the Deputy Prime Minister. *Housing Health and Safety Rating System Enforcement Guidance*; Office of the Deputy Prime Minister: London, UK, 2004; ISBN 9781851128464. Available online: https://assets.publishing.service.gov.uk/government/uploads/system/uploads/attachment_data/file/7853/safetyratingsystem.pdf (accessed on 24 August 2021).
41. FEANTSA. *ETHOS—European Typology of Homelessness and Housing Exclusion*; FEANTSA: Brussels, Belgium, 2005; Available online: <https://www.feantsa.org/en/toolkit/2005/04/01/ethos-typology-on-homelessness-and-housing-exclusion> (accessed on 24 August 2021).
42. Kosmala, M.; Wiggins, A.; Swanson, A.; Simmons, B. Assessing data quality in citizen science. *Front. Ecol. Environ.* **2016**, *14*, 551–560. [CrossRef]
43. Maguire, M.; Delahunt, B. Doing a thematic analysis: A practical, step-by-step guide for learning and teaching scholars. *All Irel. J. High. Educ.* **2017**, *9*, 3351–3354.
44. Kingfisher. *If Walls Could Talk*; Kingfisher: London, UK, 2020; Available online: https://www.kingfisher.com/content/dam/kingfisher/Corporate/Images/Other/Kingfisher%20Unfit%20Housing%20Research%20Report%20UK%20V6_Sireena.pdf (accessed on 14 January 2022).
45. Rosenthal, D.; Heys, M.; Schoenthaler, A.; Lewis, C.; Ucci, M.; Hayward, A.; Lakhanpaul, M. 920 Identifying housing-level barriers to optimal health for Under 5s experiencing homelessness: A citizen science approach. *Arch. Dis. Child.* **2021**, *106*, 163. [CrossRef]
46. Adams, J.; Bateman, B.; Becker, F.; Cresswell, T.; Flynn, D.; McNaughton, R.; Oluboyede, Y.; Robalino, S.; Ternent, L.; Sood, B.G.; et al. Triangulation and integration of results. In *Effectiveness and Acceptability of Parental Financial Incentives and Quasi-Mandatory Schemes for Increasing Uptake of Vaccinations in Preschool Children: Systematic Review, Qualitative Study and Discrete Choice Experiment*; NIHR Journals Library: Southampton, UK, 2015.
47. Maxwell, J.A. Using Qualitative Methods for Causal Explanation. *Field Methods* **2016**, *16*, 243–264. [CrossRef]
48. OECD. Housing Overcrowding (Indicator). Available online: <https://data.oecd.org/inequality/housing-overcrowding.htm> (accessed on 29 December 2021).
49. Shribman, S.; Billingham, K. *Healthy Child Programme: Pregnancy and the First Five Years of Life*; COI for Department of Health: London, UK, 2009.
50. NICE 1 Recommendations | Physical Activity for Children and Young People | Guidance | NICE. Available online: <https://www.nice.org.uk/guidance/ph17/chapter/1-Recommendations#definitions> (accessed on 29 December 2021).
51. Weather in November 2019 in London, England, United Kingdom. Available online: <https://www.timeanddate.com/weather/uk/london/historic?month=11&year=2019> (accessed on 24 November 2021).
52. Resnik, D.B.; Elliott, K.C.; Miller, A.K. A framework for addressing ethical issues in citizen science. *Environ. Sci. Policy* **2015**, *54*, 475–481. [CrossRef]

53. National Institute for Public Health and the Environment; The Ministry of Health, Welfare and Sport. 10 Benefits of Citizen Science | RIVM Magazines 2018. Available online: <https://magazines.rivm.nl/en/2018/10/citizen-science/10-benefits-citizen-science> (accessed on 10 November 2021).
54. Holdcroft, A. Gender bias in research: How does it affect evidence based medicine? *J. R. Soc. Med.* **2007**, *100*, 2–3. [CrossRef]
55. Burchard, E.G. Medical research: Missing patients. *Nature* **2014**, *513*, 301–302. [CrossRef]
56. Resnik, D.B. Scientific Research and the Public Trust. *Sci. Eng. Ethics* **2010**, *17*, 399–409. [CrossRef] [PubMed]
57. Danielsen, F.; Burgess, N.D.; Balmford, A. Monitoring Matters: Examining the Potential of Locally-based Approaches. *Biodivers. Conserv.* **2005**, *14*, 2507–2542. [CrossRef]
58. Riesch, H.; Potter, C. Citizen science as seen by scientists: Methodological, epistemological and ethical dimensions. *Public Underst. Sci.* **2014**, *23*, 107–120. [CrossRef] [PubMed]
59. Garrett, M.H.; Rayment, P.R.; Hooper, M.A.; Abramson, M.J.; Hooper, B.M. Indoor airborne fungal spores, house dampness and associations with environmental factors and respiratory health in children. *Clin. Exp. Allergy* **1998**, *28*, 459–467. [CrossRef] [PubMed]
60. Hägerhed-Engman, L.; Sigsgaard, T.; Samuelson, I.; Sundell, J.; Janson, S.; Bornehag, C.G. Low home ventilation rate in combination with moldy odor from the building structure increase the risk for allergic symptoms in children. *Indoor Air* **2009**, *19*, 184–192. [CrossRef] [PubMed]
61. Tischer, C.G.; Hohmann, C.; Thiering, E.; Herbarth, O.; Müller, A.; Henderson, J.; Granell, R.; Fantini, M.P.; Luciano, L.; Bergström, A.; et al. Meta-analysis of mould and dampness exposure on asthma and allergy in eight European birth cohorts: An ENRIECO initiative. *Allergy* **2011**, *66*, 1570–1579. [CrossRef]
62. Mendell, M.J.; Mirer, A.G.; Cheung, K.; Douwes, J.; Sigsgaard, T.; Bønløkke, J.; Meyer, H.W.; Hirvonen, M.R.; Roponen, M. Health Effects Associated with Dampness and Mould—WHO Guidelines for Indoor Air Quality—NCBI Bookshelf. Available online: <https://www.ncbi.nlm.nih.gov/books/NBK143940/> (accessed on 11 December 2021).
63. Doggett, S.L.; Dwyer, D.E.; Peñas, P.F.; Russell, R.C. Bed Bugs: Clinical Relevance and Control Options. *Clin. Microbiol. Rev.* **2012**, *25*, 164–192. [CrossRef]
64. Oudgenoeg-Paz, O.; Atun-Einy, O.; van Schaik, S.D.M. Two Cultural Models on Infant Motor Development: Middle Class Parents in Israel and the Netherlands. *Front. Psychol.* **2020**, *11*, 119. [CrossRef]
65. Hillard, P.J.A. Practical Pediatric and Adolescent Gynecology. In *Developmental Delay: Chapter 28*; Allen, L., Ornstein, M., Eds.; John Wiley and Sons, Ltd.: Hoboken, NJ, USA, 2013. [CrossRef]
66. Orton, E.; Kendrick, D.; West, J.; Tata, L.J. Persistence of Health Inequalities in Childhood Injury in the UK; A Population-Based Cohort Study of Children under 5. *PLoS ONE* **2014**, *9*, e111631. [CrossRef]
67. Children’s Commissioner. *Bleak Houses: Tackling the Crisis of Family Homelessness in England*; Children’s Commissioner: London, UK, 2019.
68. Riley, R.; Johnson, T.; Pearson, L. An audit into homeless families in temporary accommodation. *Br. J. Community Nurs.* **2001**, *6*, 18–25. [CrossRef]
69. Croft, L.A.; Marossy, A.; Wilson, T.; Atabong, A. A building concern? The health needs of families in temporary accommodation. *J. Public Health* **2021**, *43*, 581–586. [CrossRef] [PubMed]
70. The Young People’s Health Partnership; Homeless Link; Public Health England; The Health & Wellbeing Alliance; The Queen’s Nursing Institute. *Addressing Health Inequalities in Homeless Children, Young People and Families A Toolkit for Public Health Nurses 2 Addressing Health Inequalities in Homeless Children, Young People and Families A Toolkit for Public Health Nurses KEY FACTS i Contents*; VSCHE Health & Wellbeing Alliance: London, UK, 2018.
71. Shelter England. Shelter Legal England—Suitability of Homelessness Accommodation. Available online: https://england.shelter.org.uk/professional_resources/legal/homelessness_applications/offers_and_suitability_of_accommodation_for_homeless_applicants/suitability_of_homelessness_accommodation (accessed on 22 August 2021).
72. Legislation.gov.uk Housing Act 1996. Available online: <https://www.legislation.gov.uk/ukpga/1996/52/part/VII> (accessed on 22 August 2021).
73. Department for Levelling Up, Housing and Communities. *Chapter 17: Suitability of Accommodation—Homelessness Code of Guidance for Local Authorities—Guidance*; Department for Levelling Up, Housing and Communities: London, UK, 2018.
74. Ministry of Housing, Communities & Local Government. *Homelessness Code of Guidance for Local Authorities*; Ministry of Housing, Communities & Local Government: London, UK, 2018.
75. Farmer, T.; Robinson, K.; Elliott, S.J.; Eyles, J. Developing and implementing a triangulation protocol for qualitative health research. *Qual. Health Res.* **2006**, *16*, 377–394. [CrossRef] [PubMed]
76. Fiske, A.; Prainsack, B.; Buyx, A. Meeting the needs of underserved populations: Setting the agenda for more inclusive citizen science of medicine. *J. Med. Ethics* **2019**, *45*, 617–622. [CrossRef] [PubMed]
77. Morgan, A.M.; Lifshay, J. *Community Engagement in Public Health*; Contra Costa Health Services Public Health Division: Martinez, CA, USA, 2006; pp. 1–8. Available online: https://cchealth.org/public-health/pdf/community_engagement_in_ph.pdf (accessed on 3 January 2022).
78. Cappuccio, F.P.; Barbato, A.; Kerry, S.M. Hypertension, diabetes and cardiovascular risk in ethnic minorities in the UK. *Br. J. Diabetes* **2016**, *3*, 286–293. [CrossRef]

79. Khan, J.M.; Beevers, G.; Jawad, D.; Khan, M. Management of hypertension in ethnic minorities. *Heart* **2005**, *91*, 1105–1109. [[CrossRef](#)]
80. Swope, C.B.; Hernández, D. Housing as a determinant of health equity: A conceptual model. *Soc. Sci. Med.* **2019**, *243*, 112571. [[CrossRef](#)]
81. World Health Organization. *Health Promotion Glossary of Terms 2021*; World Health Organization: Geneva, Switzerland, 2021; pp. 1–44, ISBN 9789240038349.