








The Detection of Ionized Carbon Emission at $z \sim 8$ *

Michael W. Topping¹, Alice E. Shapley² , Daniel P. Stark¹, Ryan Endsley¹, Brant Robertson³ , Jenny E. Greene⁴ ,
Steven R. Furlanetto² , and Mengtao Tang⁵ 

¹ Steward Observatory, University of Arizona, 933 N Cherry Avenue, Tucson, AZ 85721, USA; michaeltopping@arizona.edu

² Department of Physics and Astronomy, University of California, Los Angeles, 430 Portola Plaza, Los Angeles, CA 90095, USA

³ Department of Astronomy and Astrophysics, University of California, Santa Cruz, 1156 High Street, Santa Cruz, CA 95064, USA

⁴ Department of Astrophysical Sciences, Princeton University, 4 Ivy Lane, Princeton, NJ, 08544, USA

⁵ Department of Physics and Astronomy, University College London, Gower Street, London WC1E 6BT, UK

Received 2021 July 13; revised 2021 July 29; accepted 2021 August 2; published 2021 August 24

Abstract

We present deep Keck/MOSFIRE H -band spectroscopic observations covering the [C III], C III] $\lambda\lambda 1907, 1909$ doublet for three $z \sim 8$ galaxy candidates in the AEGIS field. Along with nondetections in two galaxies, we obtain one of the highest-redshift detections to date of [C III] $\lambda 1907$ for the galaxy AEGIS-33376, finding $z_{\text{spec}} = 7.945 \pm 0.001$. We measure a [C III] $\lambda 1907$ flux of $2.24 \pm 0.71 \times 10^{-18} \text{ erg s}^{-1} \text{ cm}^{-2}$, corresponding to a rest-frame equivalent width of $20.3 \pm 6.5 \text{ \AA}$ for the single line. Given the not very constraining upper limit for C III] $\lambda 1909$ based on strong sky-line contamination, we assume a [C III] $\lambda 1907$ /C III] $\lambda 1909$ doublet ratio of 1.5 and infer a total [C III][C III] $\lambda\lambda 1907, 1909$ equivalent width of $33.7 \pm 10.8 \text{ \AA}$. We repeat the same reductions and analysis on multiple subsets of our raw data divided on the basis of time and observing conditions, verifying that the [C III] $\lambda 1907$ emission is present for AEGIS-33376 throughout our observations. We also confirm that the significance of the [C III] $\lambda 1907$ detection in different subsets of our data tracks that of brighter emission features detected on the same multi-slit mask. These multiple tests suggest that the observed emission line is real and associated with the $z \sim 8$ target. The strong observed [C III], C III] $\lambda\lambda 1907, 1909$ in AEGIS-33376 likely indicates ISM conditions of low metallicity, high ionization parameter, and a hard ionizing spectrum, although AGN contributions are possible. This single detection represents a sizable increase in the current sample [C III], C III] $\lambda\lambda 1907, 1909$ detections at $z > 7$, while JWST will provide the first statistical samples of such measurements at these redshifts.

Unified Astronomy Thesaurus concepts: Galaxy evolution (594); High-redshift galaxies (734)

1. Introduction

Understanding the properties of the earliest galaxies and their role in the reionization of the universe comprises one of the current frontiers for extragalactic astronomy. Because of the apparent faintness of galaxies from the reionization epoch, and the associated challenge of observing such objects, much of our understanding of the galaxy population in the $z > 7$ universe to date, including star formation rates, star formation histories, and stellar masses, is based on photometric measurements (e.g., Labbé et al. 2013; Bouwens et al. 2014, 2015; Finkelstein et al. 2015; Stark 2016). Such broadband photometric measurements can also be used to estimate properties including the strengths of prominent rest-frame optical emission lines (Ono et al. 2012; Smit et al. 2014, 2015; Roberts-Borsani et al. 2016; De Barros et al. 2019; Endsley et al. 2021), but these still only represent indirect inferences. Indeed, while many features of the galaxy population during the reionization epoch have been described with photometry, such methods are not ideal when trying to establish and understand the detailed internal physical processes that govern galaxy evolution.

Obtaining the spectra of galaxies at the highest redshifts provides the most effective tool for understanding detailed galaxy properties. At a very basic level, spectroscopic redshift measurements yield distances that enable the precise determination of intrinsic luminosities and rest-frame colors. In

addition to redshift measurements, spectroscopic observations provide windows into the properties of massive stars and the interstellar medium during crucial evolutionary periods in the history of the universe, such as cosmic reionization. During this early epoch, strong rest-optical emission lines are redshifted to wavelengths that are inaccessible from the ground. Accordingly, measurements in the rest-UV and submillimeter comprise the best options for inferring galaxy properties through spectroscopic means. One key feature is [C III], C III] $\lambda\lambda 1907, 1909$, which is often the second strongest emission feature in the rest-UV, after H I Ly α (Shapley et al. 2003). The [C III] doublet—in combination with C IV $\lambda\lambda 1548, 1550$, He II $\lambda 1640$, [O III] $\lambda\lambda 1661, 1666$, and Si III] $\lambda\lambda 1882, 1892$ —also provides an estimate of the ionizing radiation field and gas-phase metallicity within the ISM (see, e.g., Byler et al. 2018). However, observing these faint emission lines is difficult, and only a small number of detections have been achieved to date (Stark et al. 2015a, 2015b; Mainali et al. 2017; Laporte et al. 2017; Stark et al. 2017; Hutchison et al. 2019; Jiang et al. 2021). Thus far, measurements of these rest-UV features at high redshifts have implied ISM properties consistent with low metallicities, high ionization parameters, and the presence of a hard ionizing spectrum.

The next generation of ground-based ELTs will enable us to probe to fainter emission-line fluxes, covering a larger range of galaxy properties. In addition, the James Webb Space Telescope (JWST) will allow observation of strong rest-optical emission lines that are currently inaccessible from the ground. With these facilities, observations of faint emission lines during the reionization era will become standard, and the detection of

* Based on data obtained at the W.M. Keck Observatory, which is operated as a scientific partnership among the California Institute of Technology, the University of California, and the National Aeronautics and Space Administration, and was made possible by the generous financial support of the W.M. Keck Foundation.

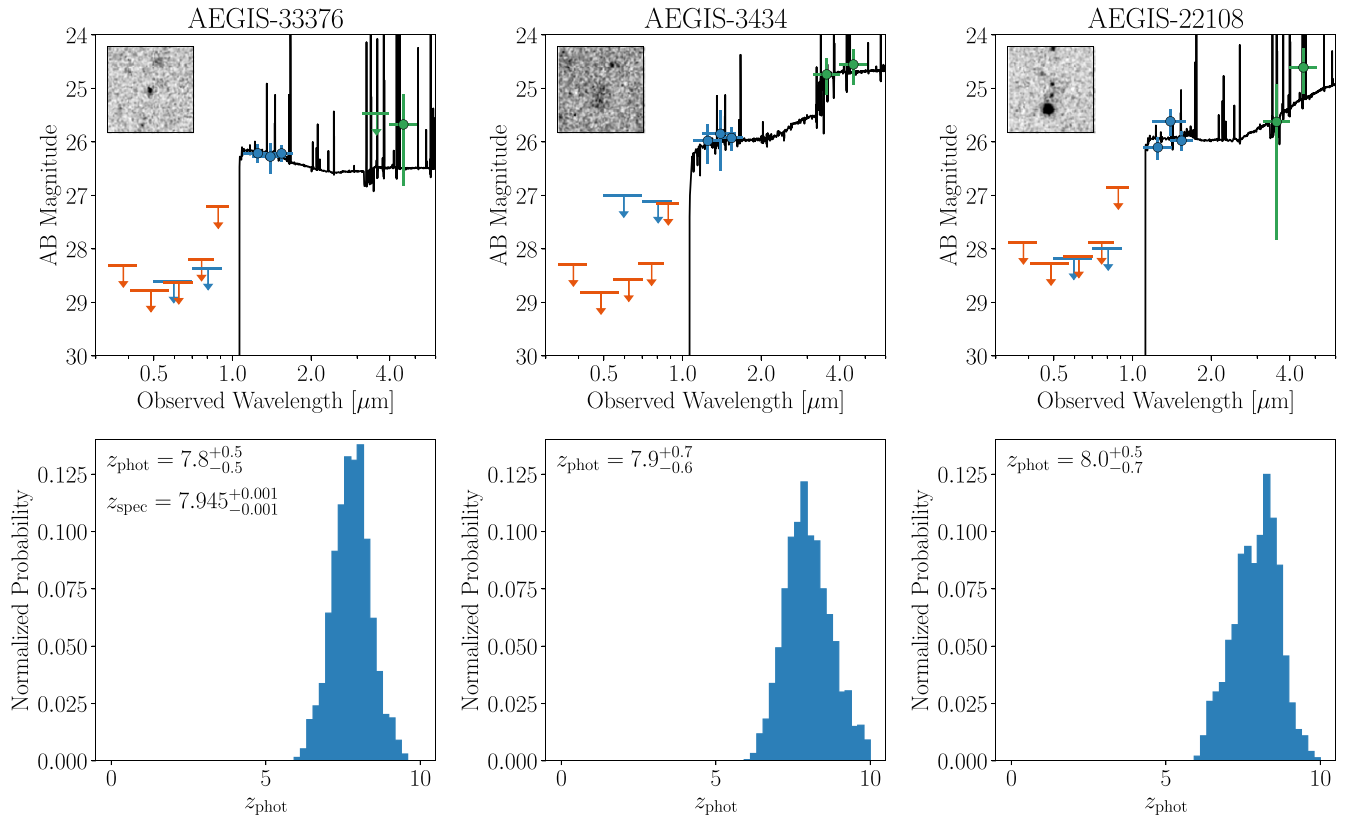


Figure 1. Top: best-fit SEDs calculated using BEAGLE (Chevallard & Charlot 2016) for the three objects in our sample. Observed photometric measurements and 2σ upper limits are shown in blue for HST ACS/WFC3 (Grogin et al. 2011; Koekemoer et al. 2011; Skelton et al. 2014), green for Spitzer IRAC bands (Ashby et al. 2015), and red for ground-based CFHT data (Gwyn 2012). Inset into each panel are cutouts $5''$ on a side centered on the position of each object from the HST F160W image. Bottom: corresponding photometric redshift probability distribution functions.

many emission features for a statistical sample of typical galaxies during this epoch will come within reach. In the meantime, it is still possible, although extremely challenging, to push the current generation of 10 meter-class ground-based telescopes and sensitive near-infrared spectrographs and pursue the rest-UV emission features of $z > 7$ galaxies. Here we present deep near-infrared spectroscopic measurements of three $z > 7$ galaxy candidates with $M_{UV} \sim -21$ using the MOSFIRE spectrograph (McLean et al. 2012) on the Keck I telescope, including a detection of $[\text{C III}]\lambda 1907$ emission at $z = 7.945$.

This paper is organized as follows. Section 2 outlines our observations and reductions. Section 3 presents our main results, and Section 4 provides a brief discussion and summary. Throughout this paper, we adopt cosmological parameters of $H_0 = 70 \text{ km s}^{-1} \text{ Mpc}^{-1}$, $\Omega_M = 0.3$, and $\Omega_\Lambda = 0.7$.

2. Data and Methods

2.1. Observations and Reductions

We obtained near-infrared spectroscopic observations in the AEGIS field using the Keck/MOSFIRE spectrograph (McLean et al. 2012). MOSFIRE slitmasks were filled with a variety of targets benefitting from long exposure times. These primarily included star-forming galaxies at $z \sim 1.5$ for which we were attempting deep observations of $[\text{N II}]\lambda 6584/\text{H}\alpha$ to achieve a high detection fraction of the faint $[\text{N II}]\lambda 6584$ feature. We also targeted galaxy candidates at $z > 7$ drawn from the catalogs of Bouwens et al. (2015). We constructed broadband SEDs for each of our $z > 7$ targets, utilizing multiwavelength photometric data that were assembled for the AEGIS field (Stefanon

et al. 2017). The best-fit SEDs were derived using the BEAGLE SED fitting code, with which we also recalculated the photometric redshift probability distribution functions (Chevallard & Charlot 2016). BEAGLE utilizes the latest Bruzual & Charlot (2003) stellar population models and incorporates self-consistent photoionization models (Gutkin et al. 2016) using Cloudy (Ferland et al. 2017). The three most robust $z > 7$ candidates were AEGIS-33376, AEGIS-3434, and AEGIS-22108 (Figure 1), where the identification numbers are taken from the 3D-HST v4.1 catalog (Skelton et al. 2014).

MOSFIRE data were obtained through two different slitmasks in the AEGIS field, one (ae1_w1) containing 33376, and the other (ae1_w2) containing 3434 and 22108. The ae1_w1 mask was observed on 2020 March 11 and 12, and 2021 May 1 and 2 (UT), while the ae1_w2 mask was observed on 2021 April 19 and 2021 May 1 (UT). The AEGIS masks were observed in the H band with $0''.7$ slits, yielding a spectral resolution of ~ 3650 . We integrated for a total of 806 and 240 minutes, respectively, on the ae1_w1 and ae1_w2 masks. Individual exposures were 120 s, and followed an ABA'B' dither pattern characterized by, respectively, $1''.5$ and $1''.2$ outer and inner nods. Conditions were clear, and the median seeing for both masks was $0''.6$.

The data were reduced using a custom IDL pipeline that yields two-dimensional rectified, flat-fielded, sky-subtracted, cosmic-ray-cleaned, wavelength-calibrated and flux-calibrated science and error spectra for each slitlet (Kriek et al. 2015). One-dimensional science and error spectra were optimally extracted and corrected for slit losses using Hubble Space

Telescope (HST) F160W images and the median seeing for each mask.

2.2. Spectrum Extraction

For objects on the masks with visible emission lines, we obtained 1D spectra from the reduced images by performing an optimal extraction defined by fitting a Gaussian to the spatial profile of the emission line (Horne 1986). If no emission lines were visible, we blindly extracted a spectrum based on the expected position in the slit with a width defined by the average seeing measured from a brighter (AB mag = 19–20) star on the mask. Limiting line fluxes for nondetections were estimated by integrating the square of the error spectrum over a typical line width centered on each pixel, and taking the square root of the resulting value. For objects with no spectroscopic redshift, the line flux upper limit is not clearly defined, since the noise is dominated by the sky spectrum and a very strong function of wavelength (i.e., redshift). To reflect this dependence and report typical line flux uncertainties, we estimated the 5σ line-flux limit as a function of wavelength over the range of possible observed wavelengths of C III] based on the photometric redshift uncertainty. We then report the median 5σ line-flux limit over this wavelength range as the C III] flux error for nondetections with only photometric redshifts. Upper limits for the combined [C III],C III] $\lambda\lambda$ 1907, 1909 doublet were measured using a similar procedure, in which we performed the integration over two wavelength windows with a fixed separation to match the doublet members.

3. Results

We visually inspect the 2D H -band spectra of all three $z > 7$ targets to find emission lines. These spectra cover an observed wavelength range of 1.47–1.80 μm , 1.45–1.76 μm , and 1.51–1.81 μm for AEGIS-33376, AEGIS-3434, and AEGIS-22108 respectively. We identify one emission line in the spectrum of AEGIS-33376 at $\lambda = 17055 \text{ \AA}$ at the expected spatial position of the galaxy, and do not find any detections in the spectrum of either AEGIS-3434 or AEGIS-22108. The detected emission line in AEGIS-33376 is coincident with a sky line. However, this sky line is one of the weakest in the H band. Despite the increased noise due to sky contamination, we measure a flux of $2.24 \pm 0.71 \times 10^{-18} \text{ erg s}^{-1} \text{ cm}^{-2}$, with an associated significance of 3.2σ .

Based on the photometric redshift of AEGIS-33376, we identify this feature as one of the [C III],C III] $\lambda\lambda$ 1907, 1909 doublet members. To determine if this emission line is [C III] λ 1907 or C III] λ 1909, we assess the expected position of the other doublet member. For an observed line of C III] λ 1909, the second doublet component would lie in a region of the spectrum clean from sky lines at $\sim 17028 \text{ \AA}$. However, given the range of anticipated [C III]/C III] flux ratios (1.2–1.5; Stark et al. 2017; Hutchison et al. 2019), we would expect the line at 17028 \AA to be stronger than the observed line at 17055 \AA , and no such emission is detected. Therefore, the observed emission is likely associated with [C III] λ 1907, with the C III] λ 1909 doublet component expected at $\sim 17073 \text{ \AA}$. This redder component is coincident with a strong sky line, and thus we do not expect to detect it. For the observed emission of [C III] λ 1907, we establish a redshift of $z = 7.945$ for AEGIS-33376, which is within the uncertainty of the photometric redshift, $z_{\text{phot}} = 7.8 \pm 0.5$. To calculate an upper limit on the flux of

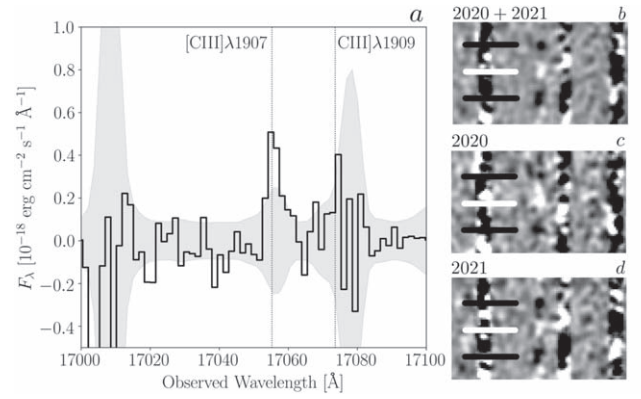


Figure 2. Reduced 1D and 2D spectra of AEGIS-33376. (a) The 1D spectrum extracted from the *all* data set. The 1σ error spectrum is displayed as the gray shaded region. The vertical dotted lines show the wavelengths of [C III] λ 1907 and C III] λ 1909 at the spectroscopic redshift of $z = 7.945$. (b) Reduced 2D spectrum of AEGIS-33376 for the *all* data set showing the characteristic arrangement of a positive line surrounded on either side by a negative. The vertical positions of the positive and negative traces are indicated by white and black lines, respectively. (c) Same as in panel (b) but only for data collected during 2020. (d) Same as in panel (b) but only for data collected during 2021. The emission line is present in the 2D spectra from both 2020 and 2021, though at lower significance than in the 2020+2021 data.

C III] λ 1909, we integrate the 3σ error spectrum centered on the expected location for C III] λ 1909, adopting the same width used to measure [C III] λ 1907, resulting in a 3σ line-flux limit of $<3.0 \times 10^{-18} \text{ erg s}^{-1} \text{ cm}^{-2}$. Based on the H -band magnitude of AEGIS-33376 galaxy and the inferred continuum flux density, the [C III] λ 1907 flux and C III] λ 1909 flux limit correspond to equivalent widths of $20.3 \pm 6.5 \text{ \AA}$ and $<27.3 \text{ \AA}$, respectively. Based on the large uncertainty for C III] λ 1909 due to strong sky-line contamination, we follow Hutchison et al. (2019) in assuming a [C III] λ 1907/C III] λ 1909 doublet ratio of 1.5, and infer a total [C III],C III] $\lambda\lambda$ 1907, 1909 equivalent width of $33.7 \pm 10.8 \text{ \AA}$. We additionally search for the [O III] $\lambda\lambda$ 1661, 1666 doublet, which is covered by our H -band spectrum based on the measured spectroscopic redshift of AEGIS-33376. However, the derived upper limit on the [O III] $\lambda\lambda$ 1661, 1666 flux and the corresponding rest-frame EW limit ($<4.2 \times 10^{-18} \text{ erg s}^{-1} \text{ cm}^{-2}$ and $<29 \text{ \AA}$, respectively) do not place meaningful constraints on the physical properties of AEGIS-33376. Figure 2(a) shows the extracted 1D spectrum of AEGIS-33376 and the 1σ error spectrum.

Due to the faint nature of the observed emission line in AEGIS-33376, and, as a result of the faint sky line that is contaminating it, we perform several tests to determine if this emission is of astrophysical origin, or if it is more likely due to sky noise or a detector artifact. We utilize the multiple observing runs over which data was collected for this object to analyze the validity of the observed emission line at $\lambda = 17055 \text{ \AA}$. First, we construct multiple data sets composed of data based on the night that the data were collected and the seeing of each individual science exposure. These data sets are reduced using the procedure described above, and the resulting spectra are analyzed to measure the emission line at the same wavelength. In total, we construct data sets comprising all data, the subset of data with seeing $<0''.7$, data from the two nights in 2020, data from the two nights in 2021, data from 2020 with $<0''.7$ seeing, and data from three nights including the 2020 data and the first night of 2021. We define the set of data containing all of the frames as the fiducial data set, hereafter

Table 1
Summary of Galaxy Properties and [C III],C III] $\lambda\lambda$ 1907, 1909 Measurements

Field	ID 3D-HST v4.1	R.A. (J2000)	Decl. (J2000)	z_{phot}	z_{spec}	Line	Line Flux (10^{-18} erg s $^{-1}$ cm $^{-2}$)	EW (\AA)	H_{AB}
AEGIS	33376	14:19:10.540	+52:50:29.74	$7.8^{+0.5}_{-0.5}$	7.945 ± 0.001	[CIII]1906.68	2.24 ± 0.71	20.3 ± 6.5	26.21
						CIII]1908.73	<3.0 (3σ) ^a	<27.3	
						[CIII],CIII]	<5.2 (3σ) ^b	<47.3 ^c	
AEGIS	3434	14:20:08.888	+52:53:31.06	$7.9^{+0.7}_{-0.6}$...	[CIII]1906.68	<2.7 (5σ) ^a	<18.7	25.92
						CIII]1908.73	<2.7 (5σ) ^a	<18.7	
						[CIII],CIII]	<4.6 (5σ) ^b	<31.8	
AEGIS	22108	14:19:59.755	+52:56:31.44	$8.0^{+0.5}_{-0.7}$...	[CIII]1906.68	<3.0 (5σ) ^a	<22.2	25.98
						CIII]1908.73	<3.0 (5σ) ^a	<22.2	
						[CIII],CIII]	<5.1 (5σ) ^b	<37.7	

Notes.

^a Upper limit estimated for an individual emission line. We adopt a 3σ limit for AEGIS-33376, which is spectroscopically confirmed, and more conservative, 5σ limits for AEGIS-3434 and AEGIS-22108, which only have photometric redshifts.

^b Upper limit estimated for both doublet members with fixed separation.

^c Here we quote the total C III] EW limit based on summing the detection and limit for the individual doublet members in AEGIS-33376. Elsewhere, we assume a fixed [C III] λ 1907/C III] λ 1909 doublet ratio to infer the total EW.

referred to as the *all* data set. The reduced 2D spectra for each of these data sets show a visible emission line at $\lambda = 17055 \text{ \AA}$, which are also present in the extracted 1D spectra. Figures 2(b), (c), and (d) shows the reduced 2D spectra for the *all*, 2020, and 2021 data sets. The line is most apparent in the 2D *all* spectrum; however, it is visible in all three subsets.

As an additional verification of the observed emission line, we measure the significance of the line, as well as several bright H α emission lines from other $z \sim 1.5$ galaxies on the mask. These H α comparison lines typically have significances of 20–75 σ when measured from the *all* data set. We perform this measurement for the same lines in each of the five constructed data sets, and test that the [C III] line exhibits the same relative significance across the different data sets compared to H α from the other targets. As the significance of very bright lines on the mask is well defined, these bright features allow for a comparison that ensures the observed emission line in AEGIS-33376 has the expected significance among the data sets, indicating it is not due to an artifact or the result of poor sky subtraction. The emission line in AEGIS-33376 follows the same trend as the bright lines, suggesting that the line is a real feature and not an artifact in the data.

We do not detect any emission lines in the spectrum of AEGIS-3434. The spectrum of this object extends up to $\lambda = 17600 \text{ \AA}$, which allows observation of C III] to a maximum redshift of $z = 8.22$. This range covers the majority of redshift space expected for this object based on the photometric redshift confidence interval of $z_{\text{phot}} = 7.9^{+0.7}_{-0.6}$. However, there is some probability that AEGIS-3434 is at too high a redshift for C III] to fall within the *H* band. In order to estimate the line-flux upper limit for AEGIS-3434 (and AEGIS-22108 below), which lacks a spectroscopic redshift, we use a more conservative 5σ noise level. Within the wavelength range expected for [C III], C III] $\lambda\lambda$ 1907, 1909 within the 1σ photometric redshift, half of the spectrum within this range has a 5σ limiting flux of $<2.7 \times 10^{-18} \text{ erg s}^{-1} \text{ cm}^{-2}$ for an individual component of [C III],C III] $\lambda\lambda$ 1907, 1909. If the line is coincident with a strong sky line the flux limit can be much higher; however, the 5σ limiting flux in a clean part of the spectrum is $<1.6 \times 10^{-18} \text{ erg s}^{-1} \text{ cm}^{-2}$. This corresponds to an upper limit on the EW of C III] of 18.7 \AA for an individual line, and 11.0 \AA within clear parts of the spectrum, between sky lines.

Finally, we do not detect any emission lines for AEGIS-22108. The placement of the AEGIS-22108 slit on the MOSFIRE mask resulted in coverage to redder wavelengths, so we could observe C III] up to a redshift of $z = 8.5$. This coverage allows detection of C III] for the full photometric redshift confidence interval of $z_{\text{phot}} = 8.0^{+0.5}_{-0.7}$. Within this photometric redshift range, half of the spectrum has a 5σ flux limit of $<3.0 \times 10^{-18} \text{ erg s}^{-1} \text{ cm}^{-2}$, corresponding to an EW limit of $<22.2 \text{ \AA}$. Regions of the spectrum clear of sky lines for this object have a flux limit of $<1.7 \times 10^{-18} \text{ erg s}^{-1} \text{ cm}^{-2}$, associated with an EW limit of 12.5 \AA . Table 1 summarizes the measurements presented here for the three $z > 7$ objects in our sample.

4. Discussion and Summary

We investigate doubly ionized carbon emission in three galaxies at $z \sim 8$. While detections of C III] are common at low redshift, they are quite rare at $z > 6$ (Zitrin et al. 2015; Stark et al. 2015a; Mainali et al. 2017; Laporte et al. 2017; Stark et al. 2017; Hutchison et al. 2019). We present the detection of [C III] λ 1907 in one galaxy at $z = 7.945$, and upper limits for two galaxies at $z \sim 8$. Spectroscopic measurements such as these provide precise redshift measurements, and crucial constraints on the ionization mechanism and properties of the ISM during this epoch.

Figure 3 shows the total [C III],C III] $\lambda\lambda$ 1907, 1909 EW as a function of M_{UV} for the measurements from our sample compared to other sources in the literature at similar redshifts (i.e., $z > 5$; Watson et al. 2015; Stark et al. 2015a, 2017; Ding et al. 2017; Hutchison et al. 2019; Jiang et al. 2021). In cases where only one of the [C III] components is detected, we assume an intrinsic [C III]/C III] line ratio of 1.5, based on assuming a reasonable value for the electron density (Hutchison et al. 2019). This figure also highlights measurements of objects at $z > 7$ (black outlined points). The two upper limits presented in our sample allow for equivalent widths covering the full range spanned by strong detections at these redshifts. The [C III] detected for AEGIS-33376, which has the faintest M_{UV} of the objects in our comparison sample, represents the second largest EW, however, with large uncertainties.

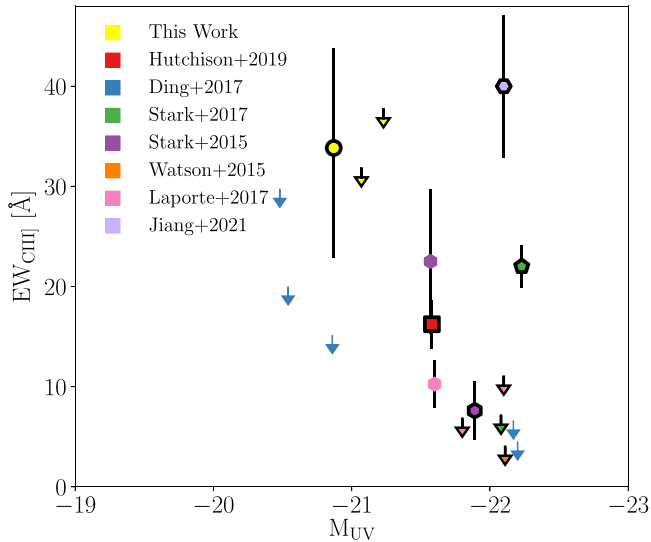


Figure 3. Comparison of total C III] equivalent widths as a function of M_{UV} for galaxies at $z > 5$. Objects at $z > 7$ have been outlined with a black border. The yellow markers are the three objects presented in this work. Comparison objects are shown from Watson et al. (2015), Stark et al. (2015a, 2017), Ding et al. (2017), Laporte et al. (2017), Hutchison et al. (2019), and Jiang et al. (2021).

As C III] is often the second strongest nebular emission line in the rest-UV (Shapley et al. 2003; Mainali et al. 2017), it provides a promising gauge of the internal physics within galaxies at high redshift. It is also useful for measuring spectroscopic redshifts when strong rest-optical emission lines are not available at redshifts where $Ly\alpha$ becomes increasingly attenuated by the IGM (e.g., Stark et al. 2010; Vanzella et al. 2011; Treu et al. 2012; Whittler et al. 2020). Measurements of strong C III] observed in lower redshift samples indicate that large C III] EWs are associated with low metallicities, high ionization parameters, and hard ionizing spectra within the ISM (Erb et al. 2010; Steidel et al. 2016; Berg et al. 2016a; Senchyna et al. 2017; Du et al. 2020; Tang et al. 2021). Stark et al. (2017) established using photoionization modeling that the large C III] EW measured for their $z = 7.73$ galaxy required models with low metallicities of $\sim 0.1 Z_{\odot}$. In addition, utilizing measurements of $Ly\alpha$ and C III], inferred [O III] EW, and constraints on Si III], Hutchison et al. (2019) demonstrated subsolar metallicity, high ionization parameter, and the presence of young stars in a galaxy at $z \sim 7.5$. The extreme C III] observed in AEGIS-33376 is one of the largest detected EWs among these comparisons at high redshift, and it suggests similar conditions of an intense ionizing radiation field and low gas-phase metallicity. However, the ionization mechanism that is powering such large equivalent widths could also be partially explained by nonstellar processes (Laporte et al. 2017; Mainali et al. 2018; Nakajima et al. 2018). With the redshift of this object measured, follow-up observations targeting $Ly\alpha$ in the Y band and fainter emission lines such as Si III] $\lambda\lambda 1882, 1892$ (Berg et al. 2016b) could further our understanding of the conditions within this galaxy.

The small number of measured [C III], C III] $\lambda\lambda 1907, 1909$ equivalent widths observed in galaxies at $z \sim 7$ appear very different from those observed in galaxies with similar M_{UV} at $z \sim 1-3$, which have typical EWs of $\sim 2 \text{ \AA}$ (Shapley et al. 2003; Steidel et al. 2016). While EWs as large as $\sim 20 \text{ \AA}$ are quite rare (e.g., Mainali et al. 2020) at these lower redshifts, they

comprise a considerable fraction of detections at $z > 7$. These measurements at high redshift represent a significant evolution relative to galaxies at lower redshifts. We expect to be most sensitive to more extreme emitters at the highest redshifts, however the low metallicities, young stellar populations, and high densities at $z \sim 7$ are conducive to increased [C III], C III] $\lambda\lambda 1907, 1909$ EWs. At yet higher redshifts we could be probing even younger and more metal-poor galaxies with higher densities. AEGIS-33376, and the galaxy GN-z11 from Jiang et al. (2021), are the two highest-redshift objects in our comparison, and also have the largest [C III], C III] $\lambda\lambda 1907, 1909$ EWs. These sources may be examples of increasingly extreme star-forming conditions at increasing redshifts, though AGN contributions are also possible (Laporte et al. 2017; Mainali et al. 2018; Nakajima et al. 2018). However, the extremely limited sample sizes preclude us from making definitive statements about the nature of galaxies at these epochs.

With current 10 meter-class ground-based telescopes and near-infrared spectrographs, the measurement of faint rest-UV metal emission lines has been limited to the most extreme line emitters. As a result, the sample sizes of such rare objects are extremely small (but can be increased with wide-field facilities such as *Roman*). Observations with JWST will probe to fainter line fluxes, allowing for measurements of more lines in the rest-UV. The redder wavelength coverage of JWST will also open up spectroscopic studies of emission lines at $z > 7$ to the rest-optical. Statistical samples probing the massive stars and ionized ISM of typical galaxies at these redshifts will provide the information necessary to understand early galaxy evolution, and the processes governing the reionization of the universe.

We acknowledge a NASA contract supporting the “WFIRST Extragalactic Potential Observations (EXPO) Science Investigation Team” (15-WFIRST15-0004; NNG16PJ25C), administered by GSFC. We also acknowledge support from NASA Keck PI Data Awards, administered by the NASA Exoplanet Science Institute. R.E. acknowledges funding from JWST/NIRCam contract to the University of Arizona, NAS5-02015. Data presented herein were obtained at the W. M. Keck Observatory from telescope time allocated to the National Aeronautics and Space Administration through the agency’s scientific partnership with the California Institute of Technology and the University of California. The Observatory was made possible by the generous financial support of the W. M. Keck Foundation. We wish to extend special thanks to those of Hawaiian ancestry on whose sacred mountain we are privileged to be guests. Without their generous hospitality, most of the observations presented herein would not have been possible.

ORCID iDs

Alice E. Shapley <https://orcid.org/0000-0003-3509-4855>
 Brant Robertson <https://orcid.org/0000-0002-4271-0364>
 Jenny E. Greene <https://orcid.org/0000-0002-5612-3427>
 Steven R. Furlanetto <https://orcid.org/0000-0002-0658-1243>
 Mengtao Tang <https://orcid.org/0000-0001-5940-338X>

References

Ashby, M. L. N., Willner, S. P., Fazio, G. G., et al. 2015, *ApJS*, 218, 33
 Berg, D. A., Skillman, E. D., Henry, R. B. C., Erb, D. K., & Carigi, L. 2016b, *ApJ*, 827, 126

- Berg, T. A. M., Ellison, S. L., Sánchez-Ramírez, R., et al. 2016a, *MNRAS*, **463**, 3021
- Bouwens, R. J., Illingworth, G. D., Oesch, P. A., et al. 2014, *ApJ*, **793**, 115
- Bouwens, R. J., Illingworth, G. D., Oesch, P. A., et al. 2015, *ApJ*, **803**, 34
- Bruzual, G., & Charlot, S. 2003, *MNRAS*, **344**, 1000
- Byler, N., Dalcanton, J. J., Conroy, C., et al. 2018, *ApJ*, **863**, 14
- Chevallard, J., & Charlot, S. 2016, *MNRAS*, **462**, 1415
- De Barros, S., Oesch, P. A., Labbé, I., et al. 2019, *MNRAS*, **489**, 2355
- Ding, J., Cai, Z., Fan, X., et al. 2017, *ApJL*, **838**, L22
- Du, X., Shapley, A. E., Tang, M., et al. 2020, *ApJ*, **890**, 65
- Endsley, R., Stark, D. P., Chevallard, J., & Charlot, S. 2021, *MNRAS*, **500**, 5229
- Erb, D. K., Pettini, M., Shapley, A. E., et al. 2010, *ApJ*, **719**, 1168
- Ferland, G. J., Chatzikos, M., Guzmán, F., et al. 2017, *RMxAA*, **53**, 385
- Finkelstein, S. L., Ryan, J., Russell, E., et al. 2015, *ApJ*, **810**, 71
- Grogin, N. A., Kocevski, D. D., Faber, S. M., et al. 2011, *ApJS*, **197**, 35
- Gutkin, J., Charlot, S., & Bruzual, G. 2016, *MNRAS*, **462**, 1757
- Gwyn, S. D. J. 2012, *AJ*, **143**, 38
- Horne, K. 1986, *PASP*, **98**, 609
- Hutchison, T. A., Papovich, C., Finkelstein, S. L., et al. 2019, *ApJ*, **879**, 70
- Jiang, L., Kashikawa, N., Wang, S., et al. 2021, *NatAs*, **5**, 256
- Koekemoer, A. M., Faber, S. M., Ferguson, H. C., et al. 2011, *ApJS*, **197**, 36
- Kriek, M., Shapley, A. E., Reddy, N. A., et al. 2015, *ApJS*, **218**, 15
- Labbé, I., Oesch, P. A., Bouwens, R. J., et al. 2013, *ApJL*, **777**, L19
- Laporte, N., Nakajima, K., Ellis, R. S., et al. 2017, *ApJ*, **851**, 40
- Mainali, R., Kollmeier, J. A., Stark, D. P., et al. 2017, *ApJL*, **836**, L14
- Mainali, R., Stark, D. P., Tang, M., et al. 2020, *MNRAS*, **494**, 719
- Mainali, R., Zitrin, A., Stark, D. P., et al. 2018, *MNRAS*, **479**, 1180
- McLean, I. S., Steidel, C. C., Epps, H. W., et al. 2012, *Proc. SPIE*, **8466**, 84460J
- Nakajima, K., Schaerer, D., Fèvre, O. Le., et al. 2018, *A&A*, **612**, A94
- Ono, Y., Ouchi, M., Mobasher, B., et al. 2012, *ApJ*, **744**, 83
- Roberts-Borsani, G. W., Bouwens, R. J., Oesch, P. A., et al. 2016, *ApJ*, **823**, 143
- Senchyna, P., Stark, D. P., Vidal-García, A., et al. 2017, *MNRAS*, **472**, 2608
- Shapley, A. E., Steidel, C. C., Pettini, M., & Adelberger, K. L. 2003, *ApJ*, **588**, 65
- Skelton, R. E., Whitaker, K. E., Momcheva, I. G., et al. 2014, *ApJS*, **214**, 24
- Smit, R., Bouwens, R. J., Franx, M., et al. 2015, *ApJ*, **801**, 122
- Smit, R., Bouwens, R. J., Labbé, I., et al. 2014, *ApJ*, **784**, 58
- Stark, D. P. 2016, *ARA&A*, **54**, 761
- Stark, D. P., Ellis, R. S., Charlot, S., et al. 2017, *MNRAS*, **464**, 469
- Stark, D. P., Ellis, R. S., Chiu, K., Ouchi, M., & Bunker, A. 2010, *MNRAS*, **408**, 1628
- Stark, D. P., Richard, J., Charlot, S., et al. 2015a, *MNRAS*, **450**, 1846
- Stark, D. P., Walth, G., Charlot, S., et al. 2015b, *MNRAS*, **454**, 1393
- Stefanon, M., Yan, H., Mobasher, B., et al. 2017, *ApJS*, **229**, 32
- Steidel, C. C., Strom, A. L., Pettini, M., et al. 2016, *ApJ*, **826**, 159
- Tang, M., Stark, D. P., Chevallard, J., et al. 2021, *MNRAS*, **501**, 3238
- Treu, T., Trenti, M., Stiavelli, M., Auger, M. W., & Bradley, L. D. 2012, *ApJ*, **747**, 27
- Vanzella, E., Pentericci, L., Fontana, A., et al. 2011, *ApJL*, **730**, L35
- Watson, D., Christensen, L., & Knudsen, K. K. 2015, *Natur*, **519**, 327
- Whitler, L. R., Mason, C. A., Ren, K., et al. 2020, *MNRAS*, **495**, 3602
- Zitrin, A., Ellis, R. S., Belli, S., & Stark, D. P. 2015, *ApJL*, **805**, L7