

# The effects of acute $\Delta^9$ -tetrahydrocannabinol on striatal glutamatergic function: a magnetic resonance spectroscopy ( $^1\text{H-MRS}$ ) study

\*Michael A. P. Bloomfield<sup>1,2,3,4,5,6#</sup>, Katherine Petrilli<sup>1,2,7,8#</sup>, Rachel Lees<sup>1,2,7,8</sup>, Chandni Hindocha<sup>1,2,3</sup>, Katherine Beck<sup>4,9</sup>, Ryan J. Turner<sup>1</sup>, Ellis Chika Onwordi<sup>4,9,10,11,12</sup>, Neil Rane<sup>13</sup>, David J. Lythgoe<sup>9</sup>, James M Stone<sup>9,10</sup>, H. Valerie Curran<sup>2,3</sup>, Oliver D Howes<sup>4,9,10</sup>, Tom P. Freeman<sup>1,2,8,9</sup>.

<sup>1</sup> Translational Psychiatry Research Group, Research Department of Mental Health Neuroscience, Division of Psychiatry, Institute of Mental Health, Faculty of Brain Sciences, University College London, United Kingdom

<sup>2</sup> Clinical Psychopharmacology Unit, Research Department of Clinical, Educational & Health Psychology, Division of Psychology, Faculty of Brain Sciences, University College London, United Kingdom

<sup>3</sup> National Institute of Health Research (NIHR) University College London Hospitals Biomedical Research Centre, United Kingdom

<sup>4</sup> Psychiatric Imaging Group, MRC London Institute of Medical Sciences, Imperial College London, United Kingdom

<sup>5</sup> Traumatic Stress Clinic, St Pancras Hospital, Camden and Islington NHS Foundation Trust, United Kingdom

<sup>6</sup> National Hospital for Neurology and Neurosurgery, University College London Hospitals NHS Foundation Trust, United Kingdom

<sup>7</sup> Institute of Cognitive Neuroscience, University College London

<sup>8</sup> Addiction and Mental Health Group (AIM), Department of Psychology, University of Bath

<sup>9</sup> Institute of Psychiatry, Psychology & Neuroscience, King's College London

<sup>10</sup> South London and Maudsley NHS Foundation Trust, United Kingdom.

<sup>11</sup> Institute of Clinical Sciences, Faculty of Medicine, Imperial College London, UK.

<sup>12</sup> West London Mental Health NHS Foundation Trust, United Kingdom

<sup>13</sup> Department of Neuroradiology, Imperial College London Hospitals NHS Trust

# These authors contributed jointly to the work.

\*Author to whom correspondence should be addressed:

Translational Psychiatry, Division of Psychiatry, Faculty of Brain Sciences, University College London, 6<sup>th</sup> Floor, Maple House, Tottenham Court Road, London WC1T 7NF  
[m.bloomfield@ucl.ac.uk](mailto:m.bloomfield@ucl.ac.uk) | +44 20 3549 5872

Short/running title: Effects of THC on striatal glutamatergic function

Keywords: Cannabis; Glutamate; MRS; Psychosis; Striatum; Tetrahydrocannabinol.

Word count (main text): 3,484

Word count (abstract): 168

## Abstract

**Background:** Cannabis and its main psychoactive component,  $\Delta^9$ -tetrahydrocannabinol (THC), can elicit transient psychotic symptoms. A key candidate biological mechanism of how THC induces psychotic symptoms is the modulation of glutamate in the brain. We sought to investigate the effects of acute THC administration on striatal glutamate levels and its relationship to the induction of psychotic symptoms.

**Methods:** We used proton magnetic resonance spectroscopy to measure glutamate levels in the striatum in 20 healthy participants after THC (15mg, oral) and matched placebo administration in a randomised double-blind placebo-controlled design. Psychotic symptoms were measured using the psychotomimetic states inventory.

**Results:** We found that THC administration did not significantly change glutamate (Glx/Cre) concentration in the striatum ( $p = .58$ ; scaled JZS Bayes Factor = 4.29). THC increased psychotic symptoms but the severity of these symptoms was not correlated with striatal glutamate levels.

**Conclusions:** These findings suggest that 15mg oral THC does not result in altered striatal glutamate levels. Further work is needed to clarify the effects of THC on striatal glutamate.

## Introduction

Cannabis is one of the most widely-used recreational drugs in the world and use may increase further as cannabis policies become more permissive internationally (1). In the USA, the past year prevalence of cannabis use disorders among users is estimated at 30.6% (2). The primary psychoactive constituent of cannabis is  $\Delta^9$ -tetrahydrocannabinol (THC) (3, 4). The THC content of cannabis has increased significantly over the past decade in Europe and the United states (5, 6). THC causes the rewarding aspects of cannabis use as well as inducing psychotic symptoms (7, 8). Long-term exposure to high THC cannabis is associated with increased risk of addiction and psychosis, and increased risk of relapse to psychosis (9-12). Therefore, there is concern that increases in THC exposure could have adverse effects on public health and rates of treatment for cannabis-related problems (13). Psychosis is associated with a range of alterations in the brain (14). THC and cannabis produce several effects on the brain which may account for the increased risk of psychopathology and psychotic symptoms (15-17). These include effects on the striatum which integrates sensorimotor, cognitive, motivational and emotional information to mediate reward and decision-making processes (7, 18-20). However, the precise mechanisms through which THC exposure causes psychotic symptoms have yet to be fully elucidated.

THC has been shown to affect striatal glutamate neurotransmission due to the abundance of type 1 endocannabinoid receptors (CB<sub>1</sub>R) in the striatum (21). Research in Sprague-Dawley rats indicates that CB<sub>1</sub>R activation is associated with reduced glutamatergic synaptic transmission in the striatum (22) and that THC dose-dependently inhibits potassium-evoked glutamate release and uptake (23). However,

it is possible that the observed inhibition in glutamate release could be caused by an increase in synaptic cleft glutamate (22). As the dopamine system is modulated by endocannabinoid-glutamate interactions (7, 24, 25), it is likely that THC disrupts the homeostatic role of the endocannabinoid system. However, evidence for the effects of THC on brain glutamate levels has not been conclusive (21). The majority of CB<sub>1</sub>Rs in the brain are expressed on cholecystinin interneurons whereby agonism results in reduced GABA release (26). THC likewise inhibits the release of GABA in several brain regions which is likely to result in suppression of inhibition of glutamatergic neurons (27).

Recent research using magnetic resonance spectroscopy (<sup>1</sup>H-MRS) has reported that intravenous THC caused an increase in glutamate in the caudate head ( $n=16$ , one-tailed test) (28) and vaporized THC-dominant cannabis increased striatal glutamate when administered in a single dose ( $n=10$ , two tailed test) but not when delivered in three divided doses in the same study ( $n=10$ , two-tailed test) (29). Therefore, further research is needed to elucidate effects of THC on the glutamate system. Oral THC products have risen considerably in popularity in new legal markets in the USA (30), but no studies have investigated the effects of oral THC on striatal glutamate. Oral THC results in a slower onset and longer duration of effect compared to intravenous or vaporized administration, and greater concentrations of 11-OH-THC and THC-COOH compared to THC (31). In this study we aimed to investigate the acute effects of oral THC administration on the associative striatum, informed by previous research showing that glutamate levels in this striatal subdivision are elevated in first-episode psychosis and decrease after clinically effective antipsychotic

treatment (32, 33). This is in keeping with findings from dopamine imaging research whereby the associative striatum is implicated over other functional striatal subdivisions in the pathophysiology of psychosis (34). We further aimed to investigate if changes in glutamate following THC exposure were associated with the severity of psychotic symptoms induced by THC.

## **Methods**

This study was approved by the UCL Research Ethics Committee (Reference 3325/002) and the study was conducted in accordance with the Declaration of Helsinki. All participants provided informed, written consent to take part in the study. Participants received a small honorarium to compensate for their time (£10 per hour).

### **Design**

We used a within-subjects, randomised, double-blinded, crossover design. Participants attended the laboratory on two occasions, at least one week apart. On each visit they received either 15mg of oral THC or placebo. The order of administration was balanced and participants were randomly allocated to treatment order. The dose of oral THC was selected based on previous research (35) indicating it is well tolerated by participants with minimal cannabis use and can elicit state psychotic symptoms with the peak drug effect expected two hours post-administration.

### **Participants**

We recruited twenty participants (10 males and 10 females) by public advertisement through flyers at university sites, electronic advertisement in websites and word of mouth. All participants had a screening interview to ascertain inclusion and exclusion criteria including past and current medical history, including psychiatric history, as well as drug use. In order to be eligible for the study participants were required to be healthy volunteers of a minimum age of 18 years old and a maximum of 35 years old. They were required to have a good level of English and to be able to give written informed consent. BMI was required to be within healthy range (18.5-24.9 kgm<sup>-2</sup>) in order to minimise variation in drug absorption and elimination. All participants

were required to have at least one previous exposure to cannabis due to ethical concerns related to exposure to this drug.

The exclusion criteria for all participants were: current or past history of mood, psychotic, anxiety or substance use disorder assessed using the Structured Clinical Interview for DSM-IV (SCID) (36); family history of mental illness in first degree relatives; current use of psychotropic drugs; current use of cannabis more than once a week or cannabis dependency as assessed using the Cannabis Use Disorder Identification Test – Revised (CUDIT-R) (cut-off score of 15) (37); use of any other illicit drugs more than twice a month; alcohol dependency as assessed by the Alcohol Use Disorders Identification Test (AUDIT) (cut-off value of 12) (38); nicotine dependency as assessed by the Fagerström Test for Nicotine Dependence (cut-off value of 3) (39); liver dysfunction; pregnancy; any contraindications to MRI scans such as presence of non-removable ferromagnetic metals inside their body or claustrophobia. All participants were instructed to refrain from using cannabis for at least one week and alcohol for twenty-four hours prior to scanning. In addition, a urinary drug screen test (Cup Multi Screen Drug Test, Alere Toxicology, Abingdon, United Kingdom) was used to assess and exclude any current use of recreational drugs (including cannabis), as well as a carbon monoxide breath measure to assess recent tobacco smoking (Micro Smokerlyzer, Bedfont Scientific, Kent, United Kingdom) on both scanning days. All female participants underwent urinary pregnancy tests prior to participation to exclude pregnancy.



## **Drug administration**

THC (Dronabinol) was obtained from THC Pharm (Frankfurt, Germany) and was formulated in 5mg capsules alongside matched placebo capsules. On each session, participants were given three capsules (either 15mg THC or placebo) for oral administration with water. Ten participants received placebo first and ten participants received placebo first.

## **Data acquisition**

All participants were required to attend to both sessions at Hammersmith Hospital, London, starting at 9 am after fasting overnight. Scanning took place at the same time across all sessions to avoid diurnal variation in the Magnetic Resonance Spectroscopy measures. Participants underwent a series of questionnaires and behavioural tasks with the scanning session being performed at 11 am (Fig. 1). Testing sessions lasted an average of five and a half hours, ending at 14:30.

**Figure 1. Testing sessions procedure. VAS: visual analogue scale; PSI: psychotomimetic states inventory.**

## **Baseline measures**

We obtained a detailed drug history from all participants using the Cannabis Experiences Questionnaire (CEQ) (40), lifetime drug history at the first session. The Beck Depression Inventory (41) was used to screen for depression (cut-off score of 21), and the Beck Anxiety Inventory (42) was used to screen for anxiety (cut-off score of 18) on the day of testing. The Wechsler Test of Adult Reading (WTAR) was used to assess intellectual functioning (43).

## **Subjective effects**

**Subjective effect rating scale.** This Visual Analogue Scale measured “feel drug effect” (35). The scale was scored by participants from zero to ten to provide a measure of the severity of the symptom. Zero was anchored with “not at all” and ten was anchored as “extremely”.

**Psychotomimetic effects.** We used the Psychotomimetic States Inventory (PSI) (44) to assess drug-induced psychotic experiences. This questionnaire consists of 48 items specifically designed to measure changes in psychotic symptoms induced by drugs such as cannabis or ketamine. The PSI has previously been shown to be sensitive to cannabis-induced psychotic effects (44) and has better test-retest reliability than the Clinician Administered Dissociative States Scale (45).

**Pharmacokinetics.** Blood samples were taken to determine cannabinoid concentrations (THC and metabolites OH-THC and THC-COOH) 150 minutes post drug administration alongside VAS<sub>2</sub> and the PSI. Blood samples were centrifuged, and

plasma was frozen at -80 °C. Cannabinoid concentrations were determined using Gas chromatography coupled with mass spectroscopy (GC/MS).

**Magnetic Resonance Spectroscopy.** All participants underwent MRI brain scans performed on a 3T Siemens MRI scanner at the Robert Steiner MRI Unit, Hammersmith Hospital, London, UK. An initial localizer scan was followed by acquisition of a whole-brain 3D Magnetization Prepared Rapid Acquisition GRE (3D-MPRAGE) scan (TR: 2300 ms, TE: 2.28 ms, flip angle: 9°, slice thickness: 1.00 mm, 0.9 mm x 0.9 mm in-plane resolution, axial orientation, 64 channels receive- only head coil). The region of interest was carefully positioned using an axial and coronal slice for localisation as previously reported (33) (Figure 2). PRESS (Point RESolved Spectroscopy) data were then acquired for analysis from the left associative striatum. PRESS data were obtained (TE 30ms, TR 3000ms, 96 acquisitions), with chemically-selective automatic water-suppression CHESS (Chemical Shift Selective Suppression), with a water suppression bandwidth of 50Hz and shimming. Siemen's automatic 'Brain' was used which has been optimised for brain spectroscopy. This used automatic higher order shim for all subjects and if this did not produce adequate homogeneity (FWHM of <20Hz) then we performed a manual first-order linear shim. Additional spectra were acquired without water suppression (TE 30ms, TR 3000ms, 6 acquisitions) for subsequent eddy current correction. Using the 3D MPRAGE as a reference, the associative striatum voxel (sized 20 mm x 20 mm x 20 mm) was positioned 3 mm dorsal to the anterior commissure to include the maximum amount of gray matter, based on a previous study in first-episode psychosis (33).

We analysed PRESS spectra (Fig. 3) using LC Model version 6.3-1L. The standard basis set of 16 metabolites (L-alanine, aspartate, creatine, phosphocreatine, GABA, glucose, glutamine, glutamate, glycerophosphocholine, glycine, myoinositol, L-lactate, N-acetyl aspartate, N-acetylaspartylglutamate, phosphocholine, taurine), included with LC Model was used. The basis set was experimentally acquired with the same field strength (3T), localisation sequence (PRESS) and echo time (30 ms) as the *in vivo* spectra. The spectra were required to have a signal-to-noise ratio (SNR) > 10 and a Cramér–Rao lower bound (CRLB) values < 20% per metabolite (Provencher, 2014). The CRLB is a reliability indicator as it is an estimated standard deviation of the estimated concentration (46). CRLB %SD values were taken from the LC model output. As the PRESS acquisition sequence is insensitive to GABA, we did not statistically analyse GABA levels (47).

**Figure 2. Voxel placement in the left associative striatum**

There are inherent difficulties in obtaining absolute concentrations of metabolites, as signal intensity is affected by a number of additional variables [36] (48). In the present study, relative measurements of glutamate were achieved by measuring metabolite signal intensity ratios with respect to creatine.

## **Statistical Analysis**

We used IBM Statistical Package for Social Sciences (SPSS) version 24 to analyse all behavioural and imaging data. All tests were two-tailed. Two-way repeated measures ANOVA models were used for all data collected on the two experimental sessions, including within-subject factors of Drug (THC, Placebo) and Time (e.g. T0, T1, T2, T3) for the drug effect measures. We included additional factors where appropriate. We identified outliers by examination of studentized residuals for values greater than  $\pm 3$ . We winsorized these when appropriate. We assessed normality using Shapiro-Wilk's test of normality on the studentized residuals. We used Mauchly's test of sphericity and the Greenhouse-Geisser correction was applied where assumptions of sphericity were violated, with degrees of freedom rounded to the nearest integer. Post-hoc pairwise tests were Bonferroni-corrected locally within each ANOVA model. Where appropriate, we used additional one-way repeated measures ANOVA models to allow further interpretation of the data. We used paired-sample *t*-tests for comparing group mean metabolite levels. For the primary outcome analysis comparing glutamate levels in the associative striatum following THC versus placebo, frequentist statistical analysis was supplemented by a Bayesian analysis to enable a test of evidence to support the null hypothesis. The scaled Jeffreys-Zellner-Siow (JZS) Bayes Factor was

calculated using a scaled information prior of  $r=1$  (49). A Bayes Factor of 3 or greater provides evidence to support the null hypothesis (49). We excluded metabolites with CRLB values  $> 20\%$  from the analysis. We used Pearson's product-moment correlations to study the relationship between metabolite concentrations relative to creatine in the striatum and psychotomimetic scores. We assessed the presence of a linear relationship between the variables by visually inspecting a scatterplot. We used a Spearman's correlation when the assumption of normality was violated.

## **Results**

### **Descriptive Data**

The age range was 19-35 years and there was an equal number of participants of each sex (10 female, 10 male). No participants had a history of mood, psychotic, anxiety nor psychotropic drug use. Sample descriptive data are reported in table 1.

Twelve of the participants (60%) reported being current users of cannabis, of these the most frequent pattern of use was once weekly (n=4 participants), meaning that current cannabis users were occasional (once a week or less) users. No participants reporting using cannabis more than once a week. No users met DSM criteria for any drug use disorders.

## Subjective effects

For the VAS measure of “feel drug effects”, there was a trend interaction between drug and time ( $F_{2,36}= 3.169$ ,  $p=.055$ ,  $\eta_p^2=.157$ ). This interaction was driven by higher mean value at time 2 (150 min after drug administration,  $t_{18}= -2.83$ ,  $p=.011$ ), and time 3 (240 minutes after drug administration,  $t_{18}= -2.968$ ,  $p=.008$ ) in the THC condition compared to placebo. Scores at time 1 (45 minutes after drug administration) did not differ between the THC and placebo conditions ( $t_{17}=.740$ ,  $p=.470$ ). The drug by time interaction was driven by higher feel drug scores on time 2 ( $t_{17}= -3.02$ ,  $p=.008$ ) versus time 1 on THC. There was also a main effect of time ( $F_{2,36}=3.300$ ,  $p=.048$ ,  $\eta_p^2=.155$ ), and a main effect of drug ( $F_{1,18}= 9.444$ ,  $p=.007$ ,  $\eta_p^2=.344$ ).



### **Psychotomimetic State Inventory (PSI).**

For PSI scores, there was an interaction between drug and time ( $F_{2,37} = 3.81$ ,  $p = .045$ ,  $\eta_p^2 = .175$ ). The interaction was driven by higher scores after drug administration in the THC condition compared to placebo. This was seen both for the  $PSI_1$  150 minutes after drug administration ( $t_{18} = 2.537$ ,  $p = .021$ ) and  $PSI_2$  240 minutes after drug administration ( $t_{18} = 3.027$ ,  $p = .007$ ); while the scores for  $PSI_0$  (before drug administration) did not differ between the THC and placebo conditions ( $t_{18} = 1.163$ ,  $p = .260$ ). The interaction between drug and time reflected an increase in PSI values from  $PSI_0$  to  $PSI_1$  ( $t_{18} = -2.793$ ,  $p = .012$ ) in the THC condition. Increased values were still maintained at  $PSI_2$  in comparison to  $PSI_0$  in the THC condition ( $t_{18} = -2.396$ ,  $p = .028$ ). In contrast, PSI values did not increase from  $PSI_0$  to  $PSI_1$  during the placebo condition ( $t_{18} = -1.003$ ,  $p = .329$ ). There was also a main effect of drug ( $F_{1,18} = 9.557$ ,  $p = .006$ ,  $\eta_p^2 = .347$ ) and a main effect of time ( $F_{1,25} = 6.666$ ,  $p = .009$ ,  $\eta_p^2 = .270$ ).

### **Pharmacokinetics measures**

The mean concentration of THC in plasma (ng/ml) 150 minutes after THC administration was 2.27 (SD = 2.06). The mean concentration of metabolites in plasma (ng/ml) 150 minutes after administration was 7.02 for THC-OH (SD = 6.20), and 64.09 for THC-COOH (SD = 48.35).

### **Proton Magnetic Resonance Spectroscopy**

**Data quality.** Example spectra are provided in figure 3. Striatal spectra from four participants were excluded due to CRLB values > 20% and/or SNR values < 10 in relation to the concentration of glutamate. In addition, striatal spectra from two participants were excluded due to poor voxel location.

**Figure 3 - Example PRESS 1H-MRS spectra from the left dorsal striatum (LC Model output). Raw data is shown in black and fitted data is shown in red. The metabolite signals assignments displayed are based on Prescott *et al.* 2011 (50). NAA= N-acetylaspartate; Glu= glutamate; Gln= glutamine; Cre= creatine, ml= myo-inositol**

### **Metabolite concentration differences in the associative striatum between THC and placebo conditions.**

There was no significant effect of drug order. Analysis of the primary <sup>1</sup>H-MRS measure of Glx/Cre in the associative striatum did not provide evidence for a difference following THC administration compared to placebo ( $t_{df} = .565_{13}$ ,  $p = .582$ , Cohen's  $d = 0.39$ ). This was corroborated by a Bayesian analysis producing a scaled JZS Bayes Factor of 4.29, providing evidence to support a lack of effect of THC versus placebo on this measure. Data from further metabolites are available in the supplementary materials for which there was also no evidence for a difference between THC and placebo. There was no relationship between striatal Glx/Cre under either drug condition and previous cannabis exposure ( $p = .433$ ).

**Figure 4: Mean concentrations of glutamate plus glutamine relative to creatine (Glx/Cre) in the left associative striatum after THC or placebo administration. Error bars indicate mean and standard errors.**



**Striatal glutamate levels and psychotomimetic effects after THC administration.**

There was no correlation between Glx/Cre measures in the striatum and PSI<sub>0</sub> values ( $r_s = -.024$ ,  $p = .93$ ), PSI<sub>1</sub> values ( $r_s = .206$ ,  $p = .48$ ) or PSI<sub>2</sub> values ( $r_s = -.069$ ,  $p = .81$ ) (figure 5).

**Figure 5: The relationship between glutamate plus glutamine relative to creatine (Glx/Cre) in the left associative striatum and PSI scores 240 minutes after drug administration (PSI<sub>2</sub>).**

## Discussion

To our knowledge, this is the first study investigating associative striatal glutamatergic function and its relationship to the psychotic effects of an acute oral THC challenge in human participants. We found that a single 15mg oral dose of THC increased psychotic symptoms. However, THC did not alter striatal glutamate levels, which was corroborated by a Bayesian analysis providing evidence to support a lack of THC effect compared to placebo. Additionally, there was no relationship between glutamate levels and the severity of THC-induced psychotic symptoms. These findings do not support our hypothesis that changes in striatal glutamate underlie THC-induced psychotic symptoms.

Our findings contrast with recent studies reporting that intravenous THC and vaporised THC-dominant cannabis caused increases in glutamate in the caudate head (28) and striatum (29), respectively. However, they are consistent with findings that vaporised THC-dominant cannabis did not increase glutamate in the striatum when delivered in three divided doses (29). In our study, Bayesian analysis provided evidence to support a lack of effect of oral THC on associative striatum glutamate levels. This analysis showed that the null hypothesis was over four times more likely than the experimental hypothesis given the data, indicating that the lack of effect was not attributable to low statistical power. Overall, the evidence suggests that the acute effects of THC on striatal glutamate are dependent on pharmacokinetic factors associated with the dose and route of administration. For example, the results of our study using oral THC are similar to those in a previous study administering vaporized

THC in three divided doses (29) which may better resemble the slower onset and longer duration of oral THC effects than a single dose administered by intravenous or vaporized administration. Our findings are also consistent with the other study which showed that when Glx levels were corrected by creatine instead of water, the difference in left striatum was no longer significant (28).

Importantly, we found evidence that THC can induce psychotic symptoms in the absence of detectable changes in associative striatum glutamate levels. This suggests that alternative mechanisms were responsible for the psychotogenic effects of THC in our study. People experiencing psychosis have dorsal striatal hyperglutamatergia (51) suggest that the mechanisms through which THC induces acute psychotic effects may differ from those seen in schizophrenia without cannabis use. Further work is therefore needed to understand the functional significance of these findings and investigate the complex relationships between THC-induced effects on glutamate, GABA and dopamine signalling.

### **Strengths and limitations**

Major strengths of our study include the use of *in vivo* neurochemical imaging in humans alongside measures of psychotic symptoms and plasma THC levels using a within-subject design. The careful design of timed testing sessions reduces the potential for diurnal variations in <sup>1</sup>H-MRS data confounding our data. However, this study has several limitations. The plasma levels of THC in the present study are lower than those obtained in other studies using an inhalation route (52) and oral route (35). It is therefore possible that our findings are due to lower plasma levels secondary to first pass metabolism associated with oral THC. Furthermore, <sup>1</sup>H-MRS is not able to

measure compartmental shifts in glutamate, which poses challenges when translating findings from animal research. Due to data quality considerations,  $^1\text{H}$  MRS data were excluded from six participants in this study. In addition, previous exposure to cannabis in the sample could have resulted in tolerance, affecting the changes of striatal glutamate measured. Finally, THC offers an experimental model of psychotic symptoms, but it may tap into different mechanisms from idiopathic schizophrenia.

## **Conclusion**

In this study investigating the effects of oral THC on striatal glutamate levels in humans in vivo we have found that acute THC did not alter glutamate levels in the associative striatum compared to placebo. We also found no relationship between associative striatal glutamate levels and THC-induced psychotomimetic symptoms. Further work is needed to clarify the mechanisms underpinning THC-induced increases in psychotic symptoms.

## **Acknowledgements**

This study was funded by a British Medical Association Foundation for Medical Research grant to Dr Bloomfield and Medical Research Council-UK grant (no. MC-A656-5QD30). Dr Bloomfield is funded by a UCL Excellence Fellowship. Drs Bloomfield and Hindocha and Professor Curran are supported by the National Institute for Health Research University College London Hospitals Biomedical Research Centre. Dr Freeman was funded by a senior academic fellowship from the Society for the Study of Addiction. We are grateful to Ting-Yun Chang for her help with preparing this manuscript. We are extremely grateful to the radiographers at the Robert Steiner MRI Unit for their assistance with magnetic resonance spectroscopy scans; Dr. Emanuele Osimo for providing medical cover and to Professor Glyn Lewis for supporting this study. We would also like to thank all our participants for taking part in this study.

## **Disclosures**

The authors declare no conflict of interest.



## References

1. Curran HV, Freeman TP, Mokrysz C, Lewis DA, Morgan CJ, Parsons LH. Keep off the grass? Cannabis, cognition and addiction. *Nat Rev Neurosci*. 2016;17(5):293-306.
2. Hasin DS, Saha TD, Kerridge BT, Goldstein RB, Chou SP, Zhang H, et al. Prevalence of Marijuana Use Disorders in the United States Between 2001-2002 and 2012-2013. *Jama Psychiat*. 2015;72(12):1235-42.
3. Gaoni Y, Mechoulam R. Isolation, Structure, and Partial Synthesis of an Active Constituent of Hashish. *J Am Chem Soc*. 1964;86(8):1646-7.
4. Freeman TP, Hindocha C, Green SF, Bloomfield MAP. Medicinal use of cannabis based products and cannabinoids. *BMJ*. 2019;365:l1141.
5. Freeman TP, Groshkova T, Cunningham A, Sedefov R, Griffiths P, Lynskey MT. Increasing potency and price of cannabis in Europe, 2006-16. *Addiction*. 2019;114(6):1015-23.
6. Chandra S, Radwan MM, Majumdar CG, Church JC, Freeman TP, ElSohly MA. New trends in cannabis potency in USA and Europe during the last decade (2008-2017). *Eur Arch Psychiatry Clin Neurosci*. 2019;269(1):5-15.
7. Bloomfield MA, Ashok AH, Volkow ND, Howes OD. The effects of Delta(9)-tetrahydrocannabinol on the dopamine system. *Nature*. 2016;539(7629):369-77.
8. D'Souza DC, Perry E, MacDougall L, Ammerman Y, Cooper T, Wu YT, et al. The psychotomimetic effects of intravenous delta-9-tetrahydrocannabinol in healthy individuals: implications for psychosis. *Neuropsychopharmacology*. 2004;29(8):1558-72.
9. Freeman TP, Winstock AR. Examining the profile of high-potency cannabis and its association with severity of cannabis dependence. *Psychol Med*. 2015;45(15):3181-9.
10. Di Forti M, Marconi A, Carra E, Frialetta S, Trotta A, Bonomo M, et al. Proportion of patients in south London with first-episode psychosis attributable to use of high potency cannabis: a case-control study. *Lancet Psychiatry*. 2015;2(3):233-8.
11. Schoeler T, Petros N, Di Forti M, Klamerus E, Foglia E, Ajnakina O, et al. Effects of continuation, frequency, and type of cannabis use on relapse in the first 2 years after onset of psychosis: an observational study. *Lancet Psychiatry*. 2016;3(10):947-53.
12. Volkow ND, Swanson JM, Evins AE, DeLisi LE, Meier MH, Gonzalez R, et al. Effects of Cannabis Use on Human Behavior, Including Cognition, Motivation, and Psychosis: A Review. *JAMA Psychiatry*. 2016;73(3):292-7.
13. Freeman TP, van der Pol P, Kuijpers W, Wisselink J, Das RK, Rigter S, et al. Changes in cannabis potency and first-time admissions to drug treatment: a 16-year study in the Netherlands. *Psychol Med*. 2018;48(14):2346-52.
14. Bloomfield MA, Buck SC, Howes OD. Schizophrenia: inorganic no more. *Lancet Psychiatry*. 2016;3(7):600-2.
15. Bloomfield MAP, Hindocha C, Green SF, Wall MB, Lees R, Petrilli K, et al. The neuropsychopharmacology of cannabis: A review of human imaging studies. *Pharmacol Ther*. 2019;195:132-61.
16. Bloomfield MA, Mouchlianitis E, Morgan CJ, Freeman TP, Curran HV, Roiser JP, et al. Salience attribution and its relationship to cannabis-induced psychotic symptoms. *Psychol Med*. 2016;46(16):3383-95.
17. Ogunbiyi MO, Hindocha C, Freeman TP, Bloomfield MAP. Acute and chronic effects of Delta(9)-tetrahydrocannabinol (THC) on cerebral blood flow: A systematic review. *Prog Neuropsychopharmacol Biol Psychiatry*. 2020;101:109900.

18. Balleine BW, Delgado MR, Hikosaka O. The role of the dorsal striatum in reward and decision-making. *J Neurosci.* 2007;27(31):8161-5.
19. Freeman TP, Pope RA, Wall MB, Bisby JA, Luijten M, Hindocha C, et al. Cannabis Dampens the Effects of Music in Brain Regions Sensitive to Reward and Emotion. *Int J Neuropsychopharmacol.* 2018;21(1):21-32.
20. Bloomfield MA, Morgan CJ, Kapur S, Curran HV, Howes OD. The link between dopamine function and apathy in cannabis users: an [18F]-DOPA PET imaging study. *Psychopharmacology (Berl).* 2014;231(11):2251-9.
21. Colizzi M, McGuire P, Pertwee RG, Bhattacharyya S. Effect of cannabis on glutamate signalling in the brain: A systematic review of human and animal evidence. *Neurosci Biobehav Rev.* 2016;64:359-81.
22. Gerdeman G, Lovinger DM. CB1 cannabinoid receptor inhibits synaptic release of glutamate in rat dorsolateral striatum. *J Neurophysiol.* 2001;85(1):468-71.
23. Brown TM, Brotchie JM, Fitzjohn SM. Cannabinoids decrease corticostriatal synaptic transmission via an effect on glutamate uptake. *J Neurosci.* 2003;23(35):11073-7.
24. Cachope R, Cheer JF. Local control of striatal dopamine release. *Front Behav Neurosci.* 2014;8:188.
25. Herkenham M, Lynn AB, de Costa BR, Richfield EK. Neuronal localization of cannabinoid receptors in the basal ganglia of the rat. *Brain Res.* 1991;547(2):267-74.
26. Katona I, Acsady L, Freund TF. Postsynaptic targets of somatostatin-immunoreactive interneurons in the rat hippocampus. *Neuroscience.* 1999;88(1):37-55.
27. Pistis M, Ferraro L, Pira L, Flore G, Tanganelli S, Gessa GL, et al. Delta(9)-tetrahydrocannabinol decreases extracellular GABA and increases extracellular glutamate and dopamine levels in the rat prefrontal cortex: an in vivo microdialysis study. *Brain Res.* 2002;948(1-2):155-8.
28. Colizzi M, Weltens N, McGuire P, Lythgoe D, Williams S, Van Oudenhove L, et al. Delta-9-tetrahydrocannabinol increases striatal glutamate levels in healthy individuals: implications for psychosis. *Mol Psychiatry.* 2019.
29. Mason NL, Theunissen EL, Hutten N, Tse DHY, Toennes SW, Stiers P, et al. Cannabis induced increase in striatal glutamate associated with loss of functional corticostriatal connectivity. *Eur Neuropsychopharmacol.* 2019;29(2):247-56.
30. Davenport S. Price and product variation in Washington's recreational cannabis market. *Int J Drug Policy.* 2019:102547.
31. Huestis MA. Human cannabinoid pharmacokinetics. *Chem Biodivers.* 2007;4(8):1770-804.
32. de la Fuente-Sandoval C, Leon-Ortiz P, Favila R, Stephano S, Mamo D, Ramirez-Bermudez J, et al. Higher levels of glutamate in the associative-striatum of subjects with prodromal symptoms of schizophrenia and patients with first-episode psychosis. *Neuropsychopharmacology.* 2011;36(9):1781-91.
33. de la Fuente-Sandoval C, Leon-Ortiz P, Azcarraga M, Stephano S, Favila R, Diaz-Galvis L, et al. Glutamate levels in the associative striatum before and after 4 weeks of antipsychotic treatment in first-episode psychosis: a longitudinal proton magnetic resonance spectroscopy study. *JAMA Psychiatry.* 2013;70(10):1057-66.
34. McCutcheon R, Beck K, Jauhar S, Howes OD. Defining the Locus of Dopaminergic Dysfunction in Schizophrenia: A Meta-analysis and Test of the Mesolimbic Hypothesis. *Schizophr Bull.* 2018;44(6):1301-11.
35. Curran HV, Brignell C, Fletcher S, Middleton P, Henry J. Cognitive and subjective dose-response effects of acute oral Delta 9-tetrahydrocannabinol (THC) in infrequent cannabis users. *Psychopharmacology (Berl).* 2002;164(1):61-70.

36. First MB, Spitzer RL, Gibbon M, Williams JBW, Davies M, Borus J, et al. The structured clinical interview for DSM-III-R personality disorders (SCID-II). Part II: Multi-site test-retest reliability study *Journal of Personality Disorders*. 1995;9(2):92-104.
37. Adamson SJ, Kay-Lambkin FJ, Baker AL, Lewin TJ, Thornton L, Kelly BJ, et al. An improved brief measure of cannabis misuse: the Cannabis Use Disorders Identification Test-Revised (CUDIT-R). *Drug Alcohol Depend*. 2010;110(1-2):137-43.
38. Babor TF, Higgins-Biddle JC, Saunders JB, Monteiro MG, Organization WH. AUDIT: the alcohol use disorders identification test: guidelines for use in primary health care 2001.
39. Heatherton TF, Kozlowski LT, Frecker RC, Fagerstrom KO. The Fagerstrom Test for Nicotine Dependence: a revision of the Fagerstrom Tolerance Questionnaire. *Br J Addict*. 1991;86(9):1119-27.
40. Barkus EJ, Stirling J, Hopkins RS, Lewis S. Cannabis-induced psychosis-like experiences are associated with high schizotypy. *Psychopathology*. 2006;39(4):175-8.
41. Beck AT, Steer RA, Brown GK. Beck depression inventory-II: San Antonio; 1996. 490-8 p.
42. Beck AT, Steer RA. Beck anxiety inventory (BAI): BiB 2010; 1988.
43. Holdnack HA. Wechsler test of adult reading: WTAR. San Antonio, TX: The Psychological Corporation; 2001.
44. Mason OJ, Morgan CJ, Stefanovic A, Curran HV. The psychotomimetic states inventory (PSI): measuring psychotic-type experiences from ketamine and cannabis. *Schizophr Res*. 2008;103(1-3):138-42.
45. De Simoni S, Schwarz AJ, O'Daly OG, Marquand AF, Brittain C, Gonzales C, et al. Test-retest reliability of the BOLD pharmacological MRI response to ketamine in healthy volunteers. *Neuroimage*. 2013;64:75-90.
46. Provencher SW. LCMModel & LCMgui user's manual 2014.
47. Baeshen A, Wyss PO, Henning A, O'Gorman RL, Piccirelli M, Kollias S, et al. Test-Retest Reliability of the Brain Metabolites GABA and Glx With JPRESS, PRESS, and MEGA-PRESS MRS Sequences in vivo at 3T. *J Magn Reson Imaging*. 2020;51(4):1181-91.
48. Minati L, Aquino D, Bruzzone MG, Erbetta A. Quantitation of normal metabolite concentrations in six brain regions by in-vivo H-MR spectroscopy. *J Med Phys*. 2010;35(3):154-63.
49. Rouder JN, Speckman PL, Sun D, Morey RD, Iverson G. Bayesian t tests for accepting and rejecting the null hypothesis. *Psychon Bull Rev*. 2009;16(2):225-37.
50. Prescott AP, Locatelli AE, Renshaw PF, Yurgelun-Todd DA. Neurochemical alterations in adolescent chronic marijuana smokers: a proton MRS study. *Neuroimage*. 2011;57(1):69-75.
51. . !!! INVALID CITATION !!! (28, 29).
52. Lee D, Bergamaschi MM, Milman G, Barnes AJ, Queiroz RH, Vandrey R, et al. Plasma Cannabinoid Pharmacokinetics After Controlled Smoking and Ad libitum Cannabis Smoking in Chronic Frequent Users. *J Anal Toxicol*. 2015;39(8):580-7.

**Table 1: Participant Details**

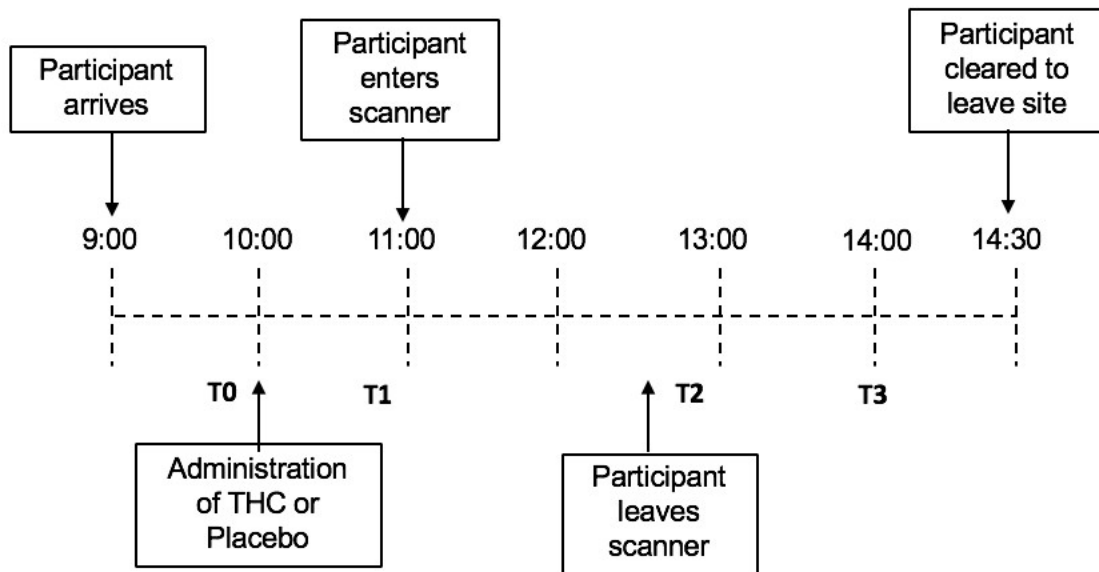
Variable ( <i>n</i> =20)	Statistic	
	Mean	SD
Age	23.5	3.94
WTAR	117	6.18
BDI	2.89	5.63
BAI	2.42	4.76
CUDIT-R	1.75	1.74
AUDIT	6.84	4.63
FTND	.10	.31

AUDIT = Alcohol Use Disorders Identification Test; BAI = Beck Anxiety Inventory; BDI = Beck Depression Inventory; CUDIT-R = Cannabis Use Disorder Identification Test; FTND = Fagerström Test for Nicotine Dependence; WTAR = Wechsler Test of Adult Reading

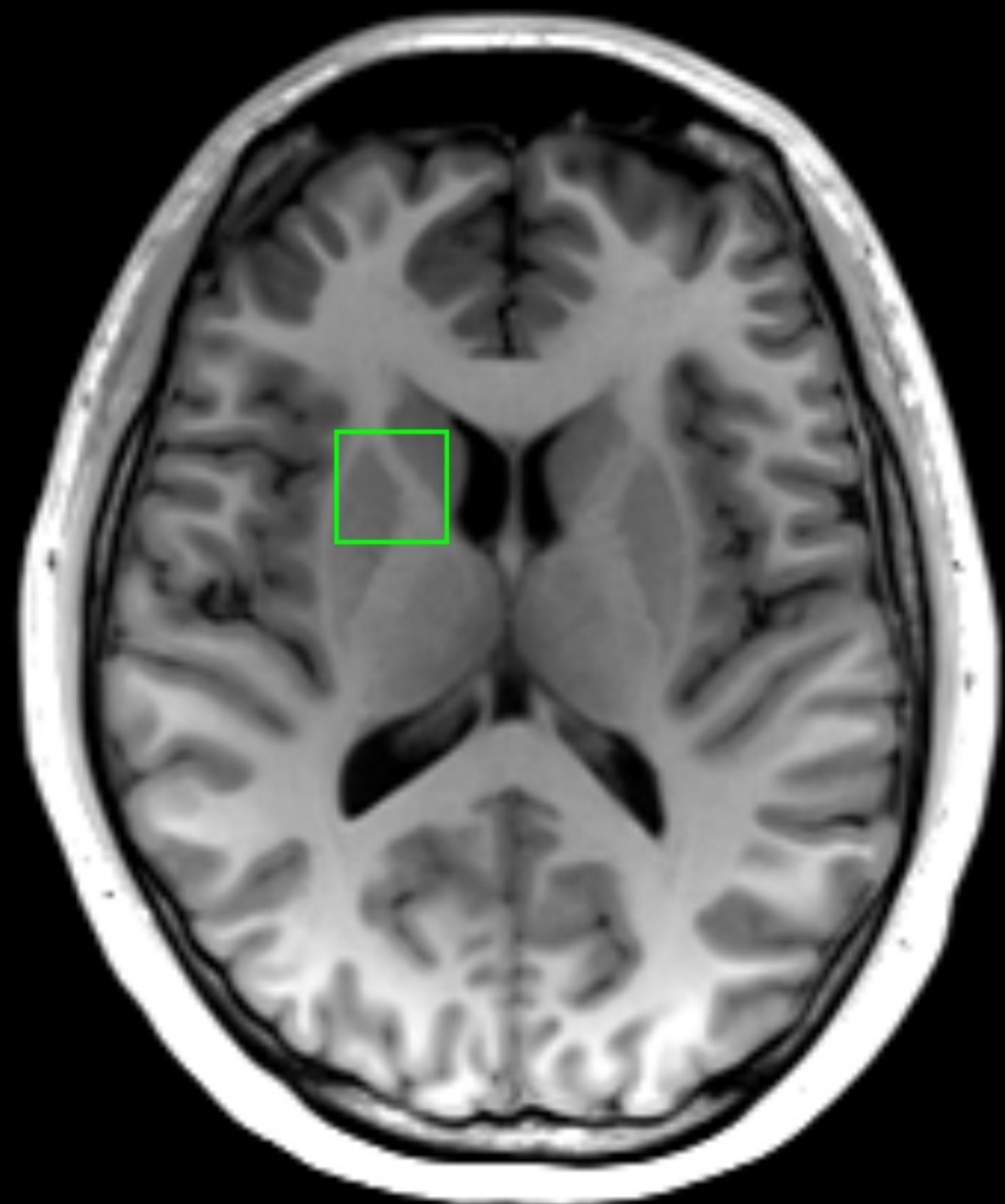
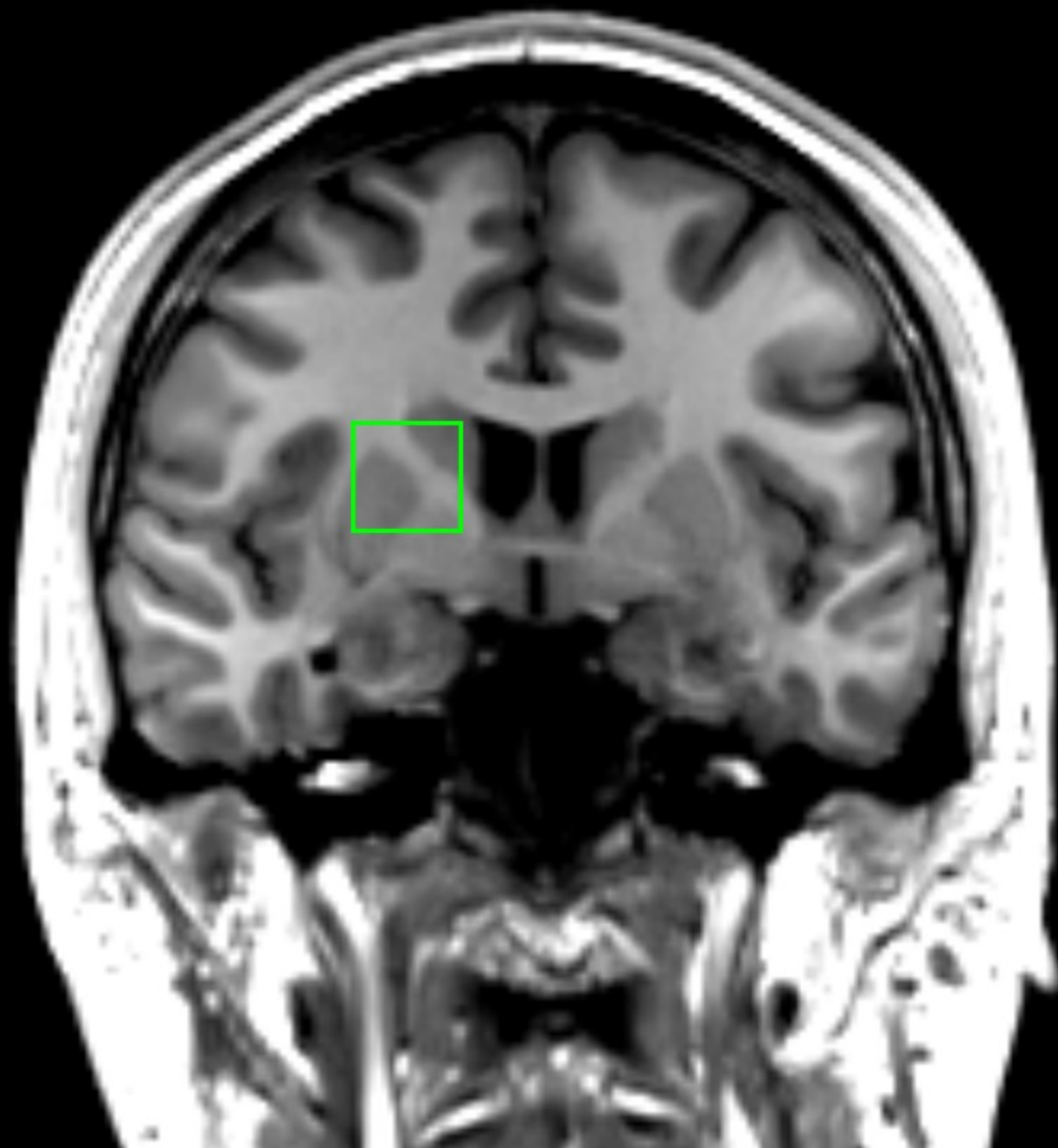
Brain Region	THC	Placebo	Statistics	
Parameter	<i>M</i> (SD)	<i>M</i> (SD)	<i>t</i>	<i>p</i>
<b>Associative striatum</b>				
<b>Cramér-Rao lower bound</b>				
<i>Glu</i>	5.93 (0.90)	6.39 (1.01)	1.49	0.16
<i>Glu/Cre</i>	1.02 (0.16)	1.01 (0.15)	1.60	0.13
<i>GluCorr</i>	6.59 (1.04)	7.12 (1.22)	1.36	0.20
<i>Glx</i>	7.50 (1.35)	7.88 (1.60)	0.63	0.53
<i>Glx/Cre</i>	1.30 (0.28)	1.35 (0.24)	0.57	0.58
<i>GlxCorr</i>	8.34 (1.60)	8.79 (1.87)	0.61	0.55
Full width at half maximum	0.07(0.04)	0.06 (0.01)	1.01	0.33
Signal to noise ratio	19.79 (6.40)	21.14 (5.56)	0.72	0.48
Grey Matter (%)	46.86 (15.17)	52.48 (13.88)	1.18	0.26
White Matter (%)	52.41 (13.52)	47.34 (13.90)	-1.00	0.34
Cerebrospinal Fluid (%)	0.73 (1.70)	0.17 (0.13)	-1.21	0.25

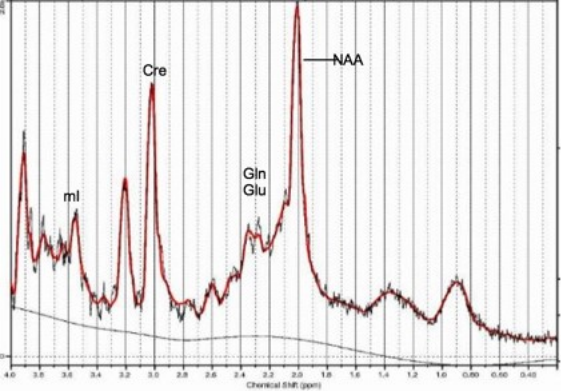
**Table 2. Voxel segmentation and spectral quality**

*Glu* glutamate, *Glu/Cre* glutamate/creatine, *GluCorr* glutamate corrected, *Glx* glutamate + glutamine, *Glx/Cre* glutamate + glutamine / creatine, *GlxCorr* glutamate + glutamine corrected.

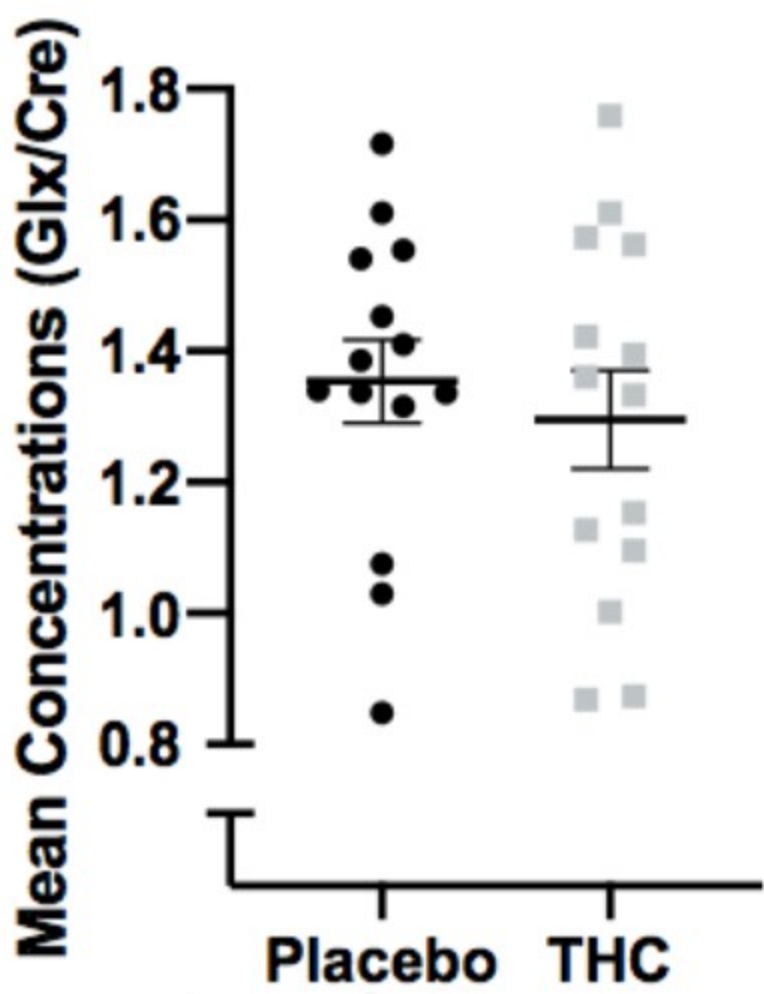


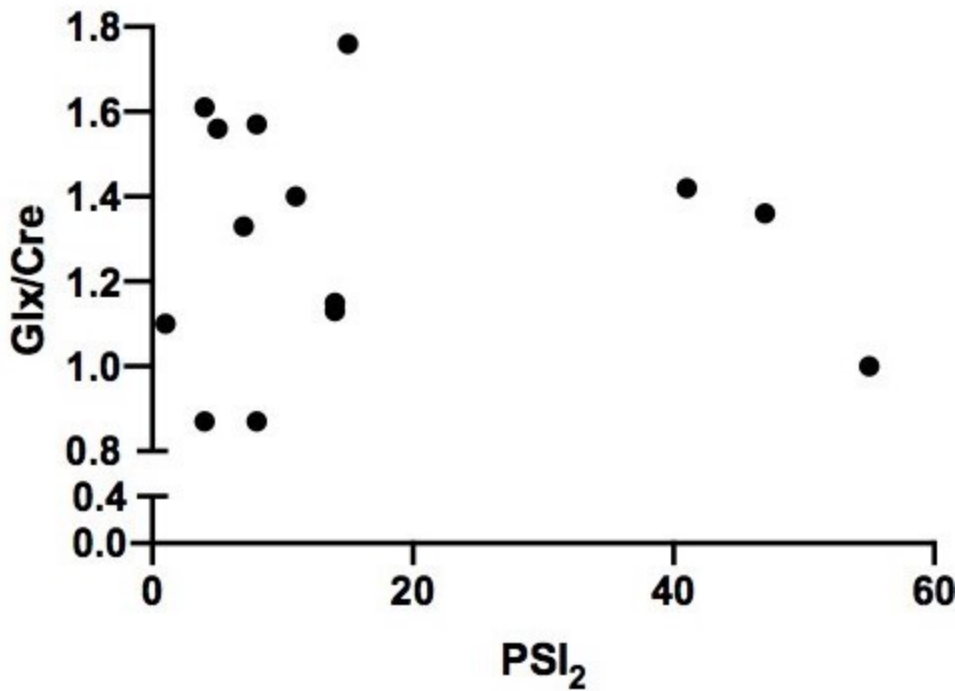
<b>Time</b>	<b>Minutes since drug administration</b>	<b>Measurements taken</b>
T0	-30	PSI <sub>0</sub>
T1	+45	VAS <sub>1</sub> : Feel drug effect
T2	+150	VAS <sub>2</sub> : Feel drug effect PSI <sub>1</sub>
T3	+240	VAS <sub>3</sub> : Feel drug effect PSI <sub>2</sub>











## Supplementary material

Brain metabolite	THC	Placebo	Statistics	
	<i>M</i> (SD)	<i>M</i> (SD)	<i>t</i>	<i>P</i>
<b><i>NAA+NAAG</i></b>	6.89 (1.05)	6.93 (0.79)	0.14	0.89
<b><i>NAA+NAAG / Cre</i></b>	1.18 (.018)	1.21 (0.17)	0.42	0.68
<b><i>Cre</i></b>	5.87 (0.93)	5.79 (0.71)	- 0.39	0.70
<b><i>ml</i></b>	3.31 (0.84)	3.45 (0.80)	0.55	0.59
<b><i>ml / Cre</i></b>	0.57 (0.12)	0.60 (0.15)	1.00	0.33
<b><i>GPC+PCh</i></b>	1.41 (0.20)	1.34 (0.26)	- 1.07	0.30
<b><i>GPC+PCh / Cre</i></b>	0.24 (0.02)	0.23 (0.03)	- 1.55	0.14

**Supplementary Table 1. Metabolites level in the associative striatum**

*NAA+NAAG N-acetylaspartate + N-Acetylaspartylglutamic acid, Cre Creatine, ml Myo-inositol, GPC+PCh Choline*