

Received:
09 March 2021Revised:
17 May 2021Accepted:
19 May 2021

© 2021 The Authors. Published by the British Institute of Radiology under the terms of the Creative Commons Attribution-NonCommercial 4.0 Unported License <http://creativecommons.org/licenses/by-nc/4.0/>, which permits unrestricted non-commercial reuse, provided the original author and source are credited.

Cite this article as:

Giganti F, Allen C, Stavrinides V, Stabile A, Haider A, Freeman A, et al. Tumour growth rates of prostate cancer during active surveillance: is there a difference between MRI-visible low and intermediate-risk disease?. *Br J Radiol* 2021; **94**: 20210321.

SHORT COMMUNICATION

Tumour growth rates of prostate cancer during active surveillance: is there a difference between MRI-visible low and intermediate-risk disease?

^{1,2}FRANCESCO GIGANTI, ¹CLARE ALLEN, ^{2,3}VASILIS STAVRINIDES, ^{2,4}ARMANDO STABILE, ⁵AIMAN HAIDER, ⁵ALEX FREEMAN, ⁶NORA PASHAYAN, ^{1,7}SHONIT PUNWANI, ³MARK EMBERTON, ^{2,3}CAROLINE M MOORE and ¹ALEX KIRKHAM

¹Department of Radiology, University College London Hospital NHS Foundation Trust, London, UK

²Division of Surgery & Interventional Science, University College London, London, UK

³Department of Urology, University College London Hospital NHS Foundation Trust, London, UK

⁴Department of Urology and Division of Experimental Oncology, Vita-Salute San Raffaele University, Milan, Italy

⁵Department of Pathology, University College London Hospital NHS Foundation Trust, London, UK

⁶Department of Applied Health Research, University College London, London, UK

⁷Centre for Medical Imaging, University College London, London, UK

Address correspondence to: Dr Francesco Giganti

E-mail: f.giganti@ucl.ac.uk

Objectives: The aim of this study was to evaluate the changes in lesion volume on serial multiparametric magnetic resonance (mpMRI) during active surveillance for prostate cancer.

Methods: A total of 160 patients with a targeted biopsy-confirmed visible lesion on mpMRI, stratified by low- and intermediate-risk disease (Gleason Grade Group 1 vs Gleason Grade Group 2), were analysed. The % change per year was calculated using the formula: $[(final\ volume/initial\ volume)\ exp\ (1/interval\ between\ scans\ in\ years)]-1$.

Results: There was no significant difference in the annual median percentage change between Gleason Grade Group 1 (18%) and Gleason Grade Group 2 (23%) disease ($p = 0.16$), and between $\leq 10\%$ (23%) and $> 10\%$ (22%) of Gleason pattern 4 ($p = 0.78$).

Assuming a spherical lesion, these changes corresponded to annual increases in mean tumour diameter of 6% and 7% for Gleason Grade Group 1 and Gleason Grade Group 2 respectively, which may be less than the interscan variability of serial mpMRI.

Conclusion: In an active surveillance cohort, we did not see a significant difference in the annual growth rate of Gleason Grade Group 1 and 2 tumours.

Advances in knowledge: In patients on active surveillance, the measured growth rates for visible tumours in Gleason Grade Groups 1 and 2 were similar. The annual growth rate was small in most cases and this may have implications for the MRI follow-up interval in active surveillance.

INTRODUCTION

There has been growing interest in the use of multiparametric magnetic resonance (mpMRI) for active surveillance (AS) in low- to intermediate-risk prostate cancer over the last decade, both to exclude undetected high-grade tumour at entry, and to monitor size and conspicuity.¹

We know that a suspicious lesion on mpMRI is seen in two-thirds of males otherwise suitable for AS¹ and that by performing mpMRI before biopsy we can target MR-visible lesions with suspicious radiological features (or showing signs of radiological progression during AS), detecting a

higher percentage of patients with clinically significant prostate cancer and lowering the diagnosis of clinically insignificant disease.²

Current guidelines for reporting MRI in this context distinguish between 'stable' or 'increased' tumour volume or conspicuity³ but they need to be refined: we cannot expect the majority of tumours to stay unchanged in volume over many years. Estimates of normal growth rate are needed so that we can identify outliers potentially requiring treatment. However, almost all our estimates of prostate cancer growth come from studies of prostate-specific antigen (PSA) kinetics, rather than imaging.⁴

In this study, we evaluated the changes in lesion volume for MR-visible lesions in our AS cohort over time and stratified them according to Gleason Grade Group.

METHODS AND MATERIALS

Our MRI-guided AS cohort at University College London Hospital (UCLH) includes patients who have had a prostate mpMRI and a biopsy-confirmed low- to intermediate-risk prostate cancer (*i.e.* Gleason Grade Group ≤ 2 and PSA ≤ 20 ng ml⁻¹) as per UK national guidelines.⁵

At UCLH, all clinical records and MR images are routinely reviewed as part of an audit performed for the internal evaluation of the AS service and no institutional review board approval was required.

The cohort presented in this study is a consecutive series of patients meeting the following inclusion criteria: i) a targeted biopsy at entry into or during AS (if multiple targeted biopsies, the first one was used in the analysis); ii) at least two MR scans (the first one being the closest to the targeted biopsy) with a visible lesion, and in case of more than two scans we analysed the first and last scans.

Image protocol and analysis

In this study, two 1.5T (Symphony or Avanto, Siemens) and one 3T (Achieva, Philips) MR scanners were used. The protocol comprised T_2 weighted imaging (T_2 WI), diffusion-weighted imaging (DWI) (including multiple b values of 0, 150, 500, 1,000 s/mm² for the apparent diffusion coefficient - ADC - map and dedicated high b value sequences: 1,400 s/mm² for 1.5T or

2,000 s/mm² for 3T) and dynamic contrast-enhanced (DCE) sequences, with no endorectal coil. All acquisitions, including the ADC map and DCE sequences, were used in this study.

The index lesion volume was measured by planimetry on the sequence best showing the tumour (as reported in Table 1) on baseline and follow-up scans (but not necessarily on the same MR scanner) by a dedicated genitourinary radiologist (FG, reporting > 2,000 prostate MR scans per year) who was blinded to all clinical and pathological data, using dedicated software (MIM[®] Symphony Dx, Cleveland, OH). All lesions were scored according to the Prostate Imaging Data and Reporting System (PI-RADS) v. 2.1 recommendations.

Statistical analysis

Data are presented as median and interquartile ranges (IQR).

The % change per year was calculated using the standard following formula for deriving the compound annual growth rate⁶:

$$[(\text{final volume}/\text{initial volume}) \exp (1/\text{interval between scans in years})]-1$$

The Mann-Whitney test was used to assess differences between groups.

RESULTS

From our initial cohort of 553 patients undergoing AS, 266 (48%) did not have a targeted biopsy, 106 (19%) had no visible lesions on mpMRI, 15 (3%) had a lesion visible only on one MR

Table 1. Clinical and MR characteristics at baseline

	Overall	Gleason Grade Group 1	Gleason Grade Group 2
	(<i>n</i> = 160)	(<i>n</i> = 84)	(<i>n</i> = 76)
Median age (years)	63 [59-69]	65 [59-69]	63 [58-69]
PSA density (ng/ml/ml)	0.15 [0.1-0.2]	0.15 [0.1-0.19]	0.14 [0.09-0.21]
PI-RADS lesions			
3	44 (28%)	28 (33%)	16 (21%)
4	106 (66%)	51 (61%)	55 (72%)
5	10 (6%)	5 (6%)	5 (7%)
Lesion location			
Peripheral zone	134 (84%)	68 (81%)	64 (84%)
Transitional zone	26 (16%)	16 (19%)	12 (16%)
Best visible sequence			
T_2 WI	48 (30%)	28 (33%)	20 (26%)
DWI ^a	57 (36%)	27 (32%)	27 (36%)
DCE	55 (34%)	29 (35%)	29 (38%)

DCE: dynamic contrast enhanced; DWI: diffusion-weighted imaging; PI-RADS: Prostate Imaging Data and Reporting System; PSA: Prostate Specific Antigen; T_2 WI: T_2 weighted imaging.

Data are medians with interquartile ranges in brackets. Percentage in parentheses.

^a For lesions best visible on DWI, these were always delineated on the high b value sequence and not on the ADC map.

Table 2. Change per year (%) stratified by MRI-visible Gleason Grade Group (Group 1 vs Group 2) and Gleason pattern 4 at targeted biopsy (\leq or $>$ 10%).

	Gleason Grade Group 1 (n = 84)	Gleason Grade Group 2 (n = 76)		p
Change per year (%)	18 [2 - 37]	23 [7 - 38]		0.16
	-	\leq 10% pattern 4 * (n = 32)	$>$ 10% pattern 4 * (n = 25)	p
Change per year (%)	-	23 [6 - 39]	22 [6 - 34]	0.78

Data are medians with interquartile ranges in brackets.

*data available for 57 patients

scan and 6 (1%) had Gleason Grade Group \geq 3 at targeted biopsy.

For those patients who did not have a targeted biopsy, the reason was that biopsies were recommended at the discretion of the treating physician. The recommendation was based either on the suspicion of progression on MRI, or on adverse PSA kinetics without MRI changes. Some patients, particularly those with Gleason Grade Group 2 disease at the outset of surveillance who could have chosen active treatment, did not wish to have a further biopsy before proceeding to treatment.

Therefore, a total of 160 patients were finally included (study period: January 2007 – November 2019), 84 (52%) of which had Gleason Grade Group 1 and 76 (48%) had Gleason Grade Group 2 disease at targeted biopsy. 130 (81%) patients had at least an additional biopsy.

Baseline clinical and MRI data are shown in Table 1.

Median interval between first and last scan was 38 months (IQR: 24–57 months).

Median follow-up for Gleason Grade Group 1 and Gleason Grade Group 2 was 41 (IQR: 24–61) months and 33.5 (IQR: 22–57) months, respectively ($p = 0.59$).

There was no significant difference in the percentage change per year between Gleason Grade Group 1 (median: 18%; IQR:

2–37) and Gleason Grade Group 2 (median: 23%; IQR: 7–38) disease ($p = 0.16$), as shown in Table 2 and Figures 1 and 2.

For Gleason Grade Group 2, when we applied a cut-off of 10% of Gleason pattern 4 (data available for 57 patients), we observed no significant difference between patients with Gleason pattern 4 \leq 10% ($n = 32$; median change: 23%; IQR: 6–39) and those with Gleason pattern 4 $>$ 10% ($n = 25$; median change: 22%; IQR: 6–34) ($p = 0.78$). (Table 2)

DISCUSSION

There are two main imaging parameters that should be taken into account during AS of small tumours.

The first is *conspicuity*: previously invisible or equivocal foci may become more visible, triggering treatment.⁷

The second key parameter is *tumour volume*, and in our study we found that there was not a marked difference in the annual change between Gleason Grade Group 1 and Gleason Grade Group 2 MR-visible tumours, although we should keep in mind that mpMRI can overestimate volume for low- and intermediate-risk disease, as small lesions are often surrounded by areas of inflammation/atrophy that can mimic low-grade tumour.⁸

Conversely, there is also evidence that MRI can underestimate the volume of prostate cancer, especially in low grade

Figure 1. Axial T_2 weighted (A, C) and dynamic-contrast enhanced (B, D) acquisitions of a patient with prostate cancer on active surveillance. The patient had Gleason Grade Group 2 disease at targeted biopsy of the lesion in the left peripheral zone (arrow) at baseline (A, B), with a lesion volume by planimetry on T_2 weighted imaging (A) of 0.12 cc. After 3 years on active surveillance, tumour volume on T_2 weighted imaging (C) was 0.39 cc, with an estimated annual growth rate of 45%.

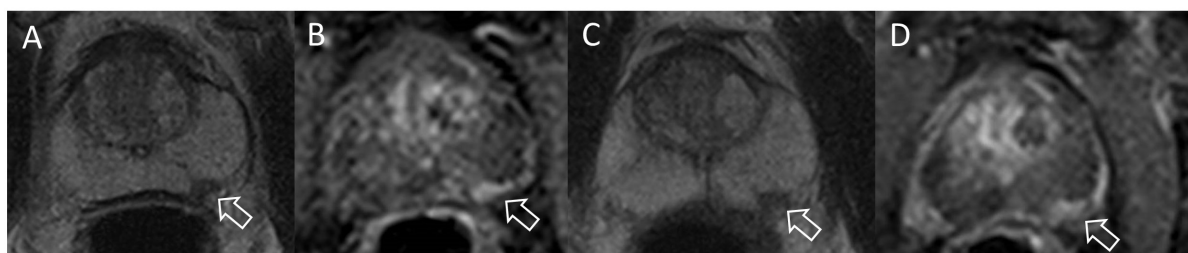
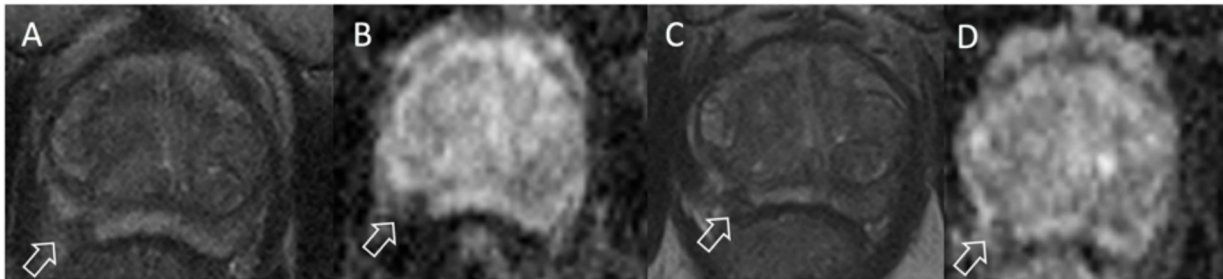


Figure 2. Axial T_2 weighted (A, C) and apparent diffusion coefficient maps from diffusion-weighted imaging (B, D) acquisitions of a patient with prostate cancer on active surveillance. The patient had Gleason Grade Group 1 disease at targeted biopsy of the lesion in the right peripheral zone (arrow) at baseline (A, B), with a lesion volume by planimetry on the ADC map (B) of 0.34 cc. After 3 years of active surveillance, tumour volume on the ADC map (D) was 0.56 cc, with an estimated annual growth rate of 62%.



disease.^{9,10} In particular, Sun and colleagues¹⁰ analysed the comparative effectiveness of different MRI sequences for the estimation of the index lesion volume compared with volume measured on whole-mount pathology. The lesion volume was underestimated on T_2 WI (55%), ADC maps (59%), and DCE images (18%) compared with histopathology.

However, the important parameter in AS is *change*, and we still do not know which sequence has the lowest variability on multiple follow-up scans.

This study has two main limitations: the first is that the order of the scans was known by the Radiologist, potentially biasing the measurement of volume, and the second is that the wide inter-quartile ranges may in part reflect interscan variability. Other limitations include the different MR scanners and magnet strengths used, the variable follow-up and the lack of comparison between change in size and pathological upgrading. Another limitation is that we did not undertake any analysis of the initial size or change in size with respect to upgrading, but this represents fertile ground for future research.

The most important clinical implication of this study may be in determining the MRI follow-up interval in AS. If we assume a spherical lesion, the annual increases of 18% and 23% in Grade Group 1 and Grade Group 2 tumours correspond to annual

increases in mean tumour diameter of 6% and 7% respectively, which is considerably less than the interscan variability of serial mpMRI¹¹: annual scans may well be too frequent to detect tumour change in most patients.

CONCLUSION

In a study with median follow-up of 38 months, we noted annual changes in volume of 18% for MR-visible Gleason Grade Group 1 and 23% for MR-visible Gleason Grade Group 2 disease, though with each grade the range was wide.

FUNDING

Francesco Giganti is a recipient of the 2020 Young Investigator Award, funded by the Prostate Cancer Foundation / CRIS Cancer Foundation. Vasilis Stavrinides is supported by an MRC Clinical Research Training Fellowship (MR/S005897/1). Shonit Punwani receives research support from the United Kingdom National Institute of Health Research (NIHR) UCLH/UCL Biomedical Research Centre. Mark Emberton is a United Kingdom National Institute of Health Research (NIHR) Senior Investigator and receives research support from the UCLH/UCL NIHR Biomedical Research Centre. Caroline M Moore is supported by the UKNIHR, Movember, PCUK and the EAU Research Foundation. Alex Kirkham is supported by the UCLH/UCL Biomedical Research Centre.

REFERENCES

- Schoots IG, Petrides N, Giganti F, Bokhorst LP, Rannikko A, Klotz L, et al. Magnetic resonance imaging in active surveillance of prostate cancer: a systematic review. *Eur Urol* 2015; **67**: 627–36. doi: <https://doi.org/10.1016/j.eururo.2014.10.050>
- Kasivisvanathan V, Rannikko AS, Borghi M, Panebianco V, Mynderse LA, Vaarala MH, et al. MRI-Targeted or standard biopsy for prostate-cancer diagnosis. *N Engl J Med* 2018; **378**: 1767–77. doi: <https://doi.org/10.1056/NEJMoa1801993>
- Moore CM, Giganti F, Albertsen P, Allen C, Bangma C, Briganti A, et al. Reporting magnetic resonance imaging in men on active surveillance for prostate cancer: the precise Recommendations—A report of a European school of oncology Task force. *Eur Urol* 2017; **71**: 648–55. doi: <https://doi.org/10.1016/j.eururo.2016.06.011>
- van den Bergh RCN, Roemeling S, Roobol MJ, Wolters T, Schröder FH, Bangma CH. Prostate-Specific antigen kinetics in clinical decision-making during active surveillance for early prostate Cancer—A review. *Eur Urol* 2008; **54**: 505–16. doi: <https://doi.org/10.1016/j.eururo.2008.06.040>
- National Institute for Health and Care Excellence (NICE). Prostate cancer diagnosis and management (NICE Guideline 131). 2019. Available from: <https://www.nice.org.uk/guidance/ng131> [Accessed 1st February 2021].
- https://en.wikipedia.org/wiki/Compound_annual_growth_rate [Accessed 20th April 2021].
- Morgan VA, Parker C, MacDonald A, Thomas K, deSouza NM, et al. Monitoring

- tumor volume in patients with prostate cancer undergoing active surveillance: is MRI apparent diffusion coefficient indicative of tumor growth? *American Journal of Roentgenology* 2017; **209**: 620–8. doi: <https://doi.org/10.2214/AJR.17.17790>
8. Bratan F, Niaf E, Melodelima C, Chesnais AL, Souchon R, Mège-Lechevallier F, et al. Influence of imaging and histological factors on prostate cancer detection and localisation on multiparametric MRI: a prospective study. *Eur Radiol* 2013; **23**: 2019–29. doi: <https://doi.org/10.1007/s00330-013-2795-0>
 9. Kramer M, Spohn SKB, Kiefer S, Ceci L, Sigle A, Oerther B, et al. Isotropic expansion of the Intraprostatic gross tumor volume of primary prostate cancer patients defined in MRI—A correlation study with whole Mount histopathological information as reference. *Front Oncol* 2020; **10**: 596756. doi: <https://doi.org/10.3389/fonc.2020.596756>
 10. Sun C, Chatterjee A, Yousuf A, Antic T, Eggener S, Karczmar GS, et al. Comparison of T2-weighted imaging, DWI, and dynamic contrast-enhanced MRI for calculation of prostate cancer index lesion volume: correlation with Whole-Mount pathology. *American Journal of Roentgenology* 2019; **212**: 351–6. doi: <https://doi.org/10.2214/AJR.18.20147>
 11. Giganti F, Moore CM, Punwani S, Allen C, Emberton M, Kirkham A. The natural history of prostate cancer on MRI: lessons from an active surveillance cohort. *Prostate Cancer Prostatic Dis* 2018; **21**: 556–63. doi: <https://doi.org/10.1038/s41391-018-0058-5>