



Cochrane
Library

Cochrane Database of Systematic Reviews

Photobiomodulation for non-exudative age-related macular degeneration (Review)

Henein C, Steel DHW

Henein C, Steel DHW.
Photobiomodulation for non-exudative age-related macular degeneration.
Cochrane Database of Systematic Reviews 2021, Issue 4. Art. No.: CD013029.
DOI: [10.1002/14651858.CD013029.pub2](https://doi.org/10.1002/14651858.CD013029.pub2).

www.cochranelibrary.com

TABLE OF CONTENTS

HEADER	1
ABSTRACT	1
PLAIN LANGUAGE SUMMARY	2
SUMMARY OF FINDINGS	4
BACKGROUND	6
OBJECTIVES	6
METHODS	6
RESULTS	9
Figure 1.	10
Figure 2.	12
Figure 3.	13
Figure 4.	14
Figure 5.	14
Figure 6.	15
Figure 7.	15
DISCUSSION	15
AUTHORS' CONCLUSIONS	17
ACKNOWLEDGEMENTS	17
REFERENCES	18
CHARACTERISTICS OF STUDIES	20
DATA AND ANALYSES	26
Analysis 1.1. Comparison 1: PBM treatment versus control for non-exudative AMD, Outcome 1: BCVA at 12 months [LogMar] ...	26
Analysis 1.2. Comparison 1: PBM treatment versus control for non-exudative AMD, Outcome 2: BCVA at 3 months [LogMar]	27
Analysis 1.3. Comparison 1: PBM treatment versus control for non-exudative AMD, Outcome 3: Contrast sensitivity at 12 months Level E [18cycles/degree]	27
Analysis 1.4. Comparison 1: PBM treatment versus control for non-exudative AMD, Outcome 4: Self-reported visual function ..	27
Analysis 1.5. Comparison 1: PBM treatment versus control for non-exudative AMD, Outcome 5: Health-related quality of life EQ-5D	27
Analysis 1.6. Comparison 1: PBM treatment versus control for non-exudative AMD, Outcome 6: Conversion to exudative AMD ..	28
Analysis 1.7. Comparison 1: PBM treatment versus control for non-exudative AMD, Outcome 7: AMD progression at 12 months ..	28
APPENDICES	28
HISTORY	32
CONTRIBUTIONS OF AUTHORS	32
DECLARATIONS OF INTEREST	32
SOURCES OF SUPPORT	32
DIFFERENCES BETWEEN PROTOCOL AND REVIEW	33

[Intervention Review]

Photobiomodulation for non-exudative age-related macular degeneration

Christin Henein^{1,2}, David HW Steel^{1,3}

¹Biosciences Institute, Newcastle University, Newcastle upon Tyne, UK. ²NIHR Biomedical Research Centre at Moorfields Eye Hospital NHS Foundation Trust and UCL Institute of Ophthalmology, London, UK. ³Sunderland Eye Infirmary, Sunderland, UK

Contact address: Christin Henein, christin.henein@gmail.com.

Editorial group: Cochrane Eyes and Vision Group.

Publication status and date: New, published in Issue 4, 2021.

Citation: Henein C, Steel DHW. Photobiomodulation for non-exudative age-related macular degeneration. *Cochrane Database of Systematic Reviews* 2021, Issue 4. Art. No.: CD013029. DOI: [10.1002/14651858.CD013029.pub2](https://doi.org/10.1002/14651858.CD013029.pub2).

Copyright © 2021 The Cochrane Collaboration. Published by John Wiley & Sons, Ltd.

ABSTRACT

Background

Age-related macular degeneration (AMD) is one of the leading causes of blindness in high-income countries. The majority of cases of AMD are of the non-exudative type. Experts have proposed photobiomodulation (PBM) therapy as a non-invasive procedure to restore mitochondrial function, upregulate cytoprotective factors and prevent apoptotic cell death in retinal tissue affected by AMD.

Objectives

To assess the effectiveness and safety of PBM compared to standard care, no treatment or sham treatment for people with non-exudative AMD.

Search methods

We searched CENTRAL (which contains the Cochrane Eyes and Vision Trials Register) (Issue 5, 2020), Ovid MEDLINE, Embase, ISRCTN, ClinicalTrials.gov and the WHO ICTRP to 11 May 2020 with no language restrictions.

Selection criteria

The review included randomised controlled trials (RCTs) on participants receiving any type of PBM therapy for non-exudative AMD compared to standard care, sham treatment or no treatment.

Data collection and analysis

We used standard methodological procedures expected by Cochrane. We considered the following outcome measures at 12 months: best-corrected visual acuity (BCVA) ; contrast sensitivity; near vision; low luminance density score; reading speed; vision-related quality of life score; and adverse events such as progression of AMD and conversion to exudative AMD. We graded the certainty of the evidence using GRADE.

Main results

We included two published RCTs from single centres in the UK and Canada, which recruited 60 participants (60 eyes) and 30 participants (46 eyes) respectively. Participants in these trials were people with non-exudative AMD with Age-Related Eye Disease Study (AREDS) categories 2 to 4. One study compared single wavelength PBM with no treatment. This study was at risk of performance bias because the study was not masked, and there was attrition bias. One study compared multi-wavelength PBM with sham treatment and conflicts of interest were reported by study investigators. We also identified three eligible ongoing RCTs from searching the clinical trials database.

When comparing PBM with sham treatment or no treatment for non-exudative AMD, there was no evidence of any meaningful clinical difference in BCVA at 12 months (mean difference (MD) 0.02 logMAR, 95% confidence interval (CI) -0.02 to 0.05; 2 RCTs, 90 eyes; low-certainty evidence). One study comparing multi-wavelength PBM with sham treatment showed an improvement in contrast sensitivity at Level E (18 cycles/degree) at 12 months (MD 0.29 LogCS, 95% CI 0.23 to 0.35; 1 RCT, 46 eyes; low-certainty evidence). Visual function and health-related quality of life scores were comparable between single wavelength PBM and no treatment groups at 12 months (VFQ-48 score MD 0.43, 95% CI -0.17 to 1.03; $P = 0.16$; 1 RCT, 47 eyes; low-certainty evidence).

When comparing PBM with sham treatment or no treatment for non-exudative AMD, there was no evidence of any meaningful clinical difference in conversion to exudative AMD (risk ratio (RR) 0.97, 95% CI 0.17 to 5.44; 2 RCTs, 96 eyes; very low-certainty evidence) at 12 months. There was inconclusive evidence that single wavelength PBM prevents the progression of AMD (RR 0.79, 95% CI 0.41 to 1.53; $P = 0.48$; 1 RCT, 50 eyes; low-certainty evidence). Disease progression was defined as the development of advanced AMD or significant increase in drusen volume.

No included study reported near vision, low luminance vision or reading speed outcomes.

Authors' conclusions

Currently there remains uncertainty whether PBM treatment is beneficial in slowing progression of non-exudative macular degeneration. There is a need for further well-designed controlled trials assessing dosimetry, powered for both effectiveness and safety outcomes. Consideration should be given to the adoption of agreed clinical outcome measures and patient-based outcome measures for AMD.

PLAIN LANGUAGE SUMMARY

What are the benefits and risks of low level light therapy (photobiomodulation) for treating dry age-related macular degeneration (a degenerative eye condition)?

Why is this question important?

Age-related macular degeneration (AMD) is a common condition of the eyes. It usually develops in people aged over 50, and leads to progressive loss of central vision. People with AMD may find it difficult to read or recognise faces, and they can become partially sighted.

AMD progresses in stages. To begin with, yellow spots (drusen) develop under the retina (the back of the eye). These are not visible to the naked eye, but can be seen by health professionals during examinations of the eyes. As AMD progresses, cells located in the macula (the central area of the retina) that are needed for vision die. If blood vessels in the eye go on to leak, the condition is classed as 'wet' AMD. If there is no leakage, the condition is known as 'dry' AMD.

There is no cure for dry AMD. However, it may be possible to use low level light therapy (photobiomodulation) to stop vision from worsening. To find out how effective photobiomodulation is for treating dry AMD and whether it is associated with unwanted effects, we reviewed the evidence from research studies.

How did we identify and evaluate the evidence?

First, we searched for randomised controlled studies (clinical studies where people are randomly put into one of two or more treatment groups), because these studies provide the most robust evidence about the effects of a treatment. We then compared the results, and summarised the evidence from the studies. Finally, we rated our confidence in the evidence, based on factors such as study methods and sizes, and the consistency of findings across studies.

What did we find?

We found two studies that involved a total of 90 people with dry AMD. Both studies received public funding.

In one study, with 60 people, set in the UK, 30 people wore a light-emitting eye mask for eight hours every night for one year. Their results were compared to those of 30 people who received no treatment.

In the other study, with 30 people, set in Canada, people received either:

→ low level light therapy for five minutes per eye, three times a week for three weeks, which was repeated after a six-month break; or

→ a sham treatment, three times a week for three weeks, which was repeated after a six-month break.

Five of the investigators of this study had links to the manufacturer of the light therapy device used (three of these were employed by the manufacturer).

We have little to very little confidence in the evidence we found, because it is based on only two small studies. The way these studies were conducted is likely to have introduced errors in their results.

The evidence suggests that:

- photobiomodulation may make little or no difference to changes in clarity of vision one year after starting treatment compared to no treatment or a sham treatment;
- photobiomodulation may make little or no difference to disease progression of AMD after one year;
- photobiomodulation may improve a person's ability to distinguish an object against its background;
- photobiomodulation may make little or no difference to clarity of vision as reported by patients.

We have too little confidence in the evidence to be able to determine whether, after one year of treatment, photobiomodulation affects:

- progression to wet AMD.

Since neither study reported information about some outcomes, we cannot determine from the evidence whether, after one year of treatment, photobiomodulation affects:

- near vision;
- vision in low light; or
- reading speed.

What does this mean?

Compared to no treatment or a sham treatment, photobiomodulation may make little or no difference to clarity of vision or disease progression in people with dry AMD one year after starting treatment.

We do not know if photobiomodulation affects other aspects such as progression to wet AMD or changes in near vision. This is because too few, or no, robust studies have investigated this.

How up-to-date is this review?

The evidence in this Cochrane Review is current to May 2020.

SUMMARY OF FINDINGS

Summary of findings 1. Photobiomodulation treatment compared to sham or no treatment for non-exudative age-related macular degeneration

PBM treatment compared to sham or no treatment for non-exudative AMD

Patient or population: people with non-exudative AMD (AREDS 2 to 4)

Setting: ophthalmology clinics

Intervention: PBM treatment

Comparison: no treatment or sham treatment

Outcomes	Anticipated absolute effects* (95% CI)		Relative effect (95% CI)	N° of eyes (studies)	Certainty of the evidence (GRADE)	Comments
	Risk with no treatment	Risk with PBM treatment				
<p>Best-corrected visual acuity at 12 months [logMAR]</p> <p>Measured on the logMAR scale, range -1.3 to 1.0. Lower scores represent better vision.</p>	The mean best-corrected visual acuity ranged across control groups from 0.24 to 0.96 logMAR	Mean logMAR score in the PBM group was on average 0.02 logMAR higher (worse) (-0.02 lower to 0.05 higher)	-	90 (2 RCTs)	⊕⊕⊕⊕ ^{a,b} LOW	
<p>Contrast sensitivity at Level E [18 cycles/degree] at 12 months</p> <p>Higher scores represent better contrast sensitivity.</p>	On average there was no change in contrast sensitivity at Level E from baseline	Mean change in contrast sensitivity (Level E, 18 cycles/degree) was approximately 0.3 higher (better) with PBM (0.23 higher to 0.35 higher)	-	30 (1 RCT)	⊕⊕⊕⊕ ^{a,b} LOW	
Near vision	No studies reported this outcome					
Low luminance deficit score	No studies reported this outcome					
Reading speed	No studies reported this outcome					
<p>Self-reported visual function at 12 months</p> <p>Measured with VFQ-48 questionnaire. Higher scores represent better reported visual function.</p>	Average self-reported visual function score was 5.19	Mean visual function score was 0.43 higher (worse) in the PBM group (-0.17 lower to 1.03 higher)	-	47 (1 RCT)	⊕⊕⊕⊕ ^{a,b} LOW	

Adverse events:	483 per 1,000 study population	381 per 1,000 (198 to 739)	RR 0.79 (0.41 to 1.53)	50 (1 RCT)	⊕⊕⊕⊕ ^{a,b} LOW
AMD progression at 12 months					
Defined as increased drusen volume or onset of advanced AMD.	43 per 1,000 study population	41 per 1,000 (7 to 231)	RR 0.97 (0.17 to 5.44)	96 (2 RCTs)	⊕⊕⊕⊕ ^{b,c} VERY LOW
Conversion to exudative AMD at 12 months					
Assessed by clinical examination and retinal optical coherence tomography.					

***The risk in the intervention group** (and its 95% confidence interval) is based on the assumed risk in the comparison group and the **relative effect** of the intervention (and its 95% CI).

AMD: age-related macular degeneration; **AREDS:** age-related eye disease study classification; **CI:** confidence interval; **OR:** odds ratio; **PBM:** photobiomodulation; **RR:** risk ratio

GRADE Working Group grades of evidence

High-certainty: we are very confident that the true effect lies close to that of the estimate of the effect

Moderate-certainty: we are moderately confident in the effect estimate. The true effect is likely to be close to the estimate of the effect, but there is a possibility that it is substantially different.

Low-certainty: our confidence in the effect estimate is limited. The true effect may be substantially different from the estimate of the effect.

Very low-certainty: We have very little confidence in the effect estimate. The true effect is likely to be substantially different from the estimate of effect.

Reason for downgrading certainty of evidence

a. -1 for imprecision as sample size was underpowered

b. -1 for performance and attrition bias

c. -2 for very wide confidence intervals including 1 (null effect)

BACKGROUND

Description of the condition

Age-related macular degeneration (AMD) is an irreversible, degenerative eye condition involving the central retina. AMD is the leading cause of irreversible blindness in people aged 50 years or older in the UK. It accounts for 50% of blind and partially sighted registrations ([Macular Society 2017](#)).

Clinically, AMD occurs in two advanced forms, non-exudative ('dry') or neovascular ('wet'). AMD is characterised by cellular debris, clinically identifiable as round deposits called drusen which accumulate between the choroid and the retina. This is followed by gradual retinal cell death representing non-exudative AMD, which can be further complicated by the 'wet' form where blood vessels grow from the choroid underneath the retina. Wet AMD is more rapidly advancing. The exact cause of the underlying disease process is unknown but the major aetiological factors are oxidative stress, abnormalities in autophagy and heterophagy, and innate immune activation exacerbated by genetic predispositions. AMD has early, intermediate and advanced forms.

Description of the intervention

Photobiomodulation (PBM) is the process by which low level light technology affects cellular function. Visible to near-infrared (NIR) light wavelength can be delivered by low-level laser therapy (LLLT) or light-emitting diodes (LED) and has been proposed to have beneficial clinical effects in the AMD process. LLLT is coherent monochromatic light and can be delivered as a continuous emission or pulsed beam. LED light is quasi-monochromatic and non-coherent.

How the intervention might work

By exposing people with AMD to light ranging from low-intensity visible to NIR (500 nm to 1000 nm), PBM therapy allows for high tissue penetration and offers a possible non-invasive approach for the treatment of AMD. PBM utilising low-intensity visible green/blue light (500 nm to 560 nm) delivered at night, can act as a visual cycle modulator by reducing the metabolic demand of the retina by preventing full dark adaptation and thereby night-time retinal outer segment hypoxia ([Arden 2010](#)). The pathophysiology of AMD is complex. Hypoxia associated with high metabolic demand of rods has been implicated as a main driver in the pathology of AMD. NIR irradiation is shown to enhance mitochondrial activity, in particular mitochondrial cytochrome C oxidase (COX) activity and production of adenosine triphosphate (ATP) in the retina, leading to a reduction in free radical production and oxidative damage ([Sivapathasuntharam 2017](#)). Mitochondrial COX acts as a photo-acceptor for NIR irradiation. Spectral analysis study showed inhibitory effects of certain NIR wavelengths (750 nm and 950 nm) on COX activity, suggesting different biological effects within the NIR wavelength spectrum ([Sanderson 2018](#)).

PBM has also been shown to reduce gene expression of retinal stress and inflammatory mediators in the outer retina ([Begum 2013](#); [Kokkinopoulos 2013](#)). Animal studies have shown PBM reduces complement propagation, increases phagocytosis and improves aged retinal function ([Fuma 2015](#); [Rutar 2012](#)). A review by Fitzgerald and colleagues concluded that there is a growing body of preclinical evidence to support the hypothesis that PBM has disease-modifying potential ([Fitzgerald 2013](#)). This has prompted

investigators to conduct clinical trials to assess the efficacy of PBM therapy in improving visual function and reducing disease progression in people with AMD.

Why it is important to do this review

Consultation with patients and eye care professionals prioritised the need for a treatment to stop non-exudative AMD progression ([James Lind Alliance 2013](#)). In the EU, 400,000 people are diagnosed with advanced AMD, a figure which is expected to rise to 700,000 per year in 2050 ([Li 2020](#)). The cumulative cost of detection, treatment and provision of social care for people with AMD from 2010 to 2020 was estimated as GBP 16.4 billion ([RNIB 2009](#)). Over 15% of people with AMD develop advanced AMD, with profound central vision loss or blindness ([Klein 2007](#); [Macular Society 2017](#)).

AMD limits day-to-day activities due to vision-related impairment ([Berdeaux 2005](#); [Owsley 2006](#); [Scilley 2002](#)). There is currently no available treatment. An effective and cost-effective intervention would be of considerable benefit globally to those with this untreatable and debilitating condition. PBM offers the possibility of a safe and non-invasive therapy for AMD. Currently, there is wide heterogeneity of PBM treatment regimens and uncertainty exists regarding its efficacy. It is important to do this review to obtain an overall estimate of the effectiveness of PBM treatment in non-exudative AMD and to assess any harmful effects.

OBJECTIVES

To assess the effectiveness and safety of PBM compared to standard care, no treatment or sham treatment for people with non-exudative AMD.

METHODS

Criteria for considering studies for this review

Types of studies

We included randomised controlled trials (RCTs) only in this review. Trials included had analyses based on one or both eyes per participant.

Types of participants

Participants aged 50 years or older with non-exudative AMD of the early, intermediate or late stage, as defined by the Age-Related Eye Disease Study ([AREDS 2001](#)), were eligible irrespective of their lens status. Late stages feature geographic atrophy: a well-demarcated area of retinal pigmented epithelium atrophy with or without central foveal involvement.

Types of interventions

We included trials that compared PBM to standard care or no treatment (or sham treatment) and where both groups were monitored equally. We included trials using visible to NIR light (500 nm to 1000 nm) delivered by low-level lasers or light-emitting diodes. We included trials that adequately described the PBM therapy parameters in terms of wavelength(s), dose, frequency, duration and coverage. Standard care consists of modifying risk factors; smoking cessation, nutritional advice and supportive measures; and referral to low-vision services and visual rehabilitation.

Types of outcome measures

Primary outcomes

- Mean best-corrected visual acuity (BCVA) using a logMAR chart at 12 months follow-up

Secondary outcomes

- Mean best-corrected visual acuity (BCVA) using a logMar chart at three months after treatment (range one to three months)
- Mean contrast sensitivity measured using a Pelli Robson chart at short- (one to three months) and long-term (12 months) follow-up
- Mean near vision at short- (one to three months) and long-term (12 months) follow-up
- Mean low luminance deficit (LLD) score (the difference between low luminance visual acuity and BCVA), measured in logMAR chart units, at short- (one to three months) and long-term (12 months) follow-up
- Mean reading speed at short- (one to three months) and long-term (12 months) follow-up using a calibrated reading chart
- Mean vision-related quality of life score at short- (one to three months) and long-term (12 months) follow-up, measured using a validated questionnaire

Where studies measured outcomes using alternative techniques - for example, other visual acuity or contrast sensitivity charts - we planned to collect and include data in the analysis by converting scales. We planned to report any cost benefit data reported in included studies.

Adverse events

The main complication of concern for PBM is vision loss, especially due to choroidal neovascularisation or advancing geographic atrophy. Adverse events included but were not limited to:

- the proportion of participants with worse vision following PBM therapy. Worse vision was defined by a loss of 15 or more Early Treatment Diabetic Retinopathy Study (ETDRS) letters;
- the proportion of participants who developed new geographic atrophy or progression of geographic atrophy; and
- the proportion of participants who developed neovascular macular degeneration.

Search methods for identification of studies

Electronic searches

The Cochrane Eyes and Vision Information Specialist searched the following electronic databases for randomised controlled trials and controlled clinical trials. There were no restrictions to language or year of publication. The electronic databases were last searched on 11 May 2020.

- Cochrane Central Register of Controlled Trials (CENTRAL; 2020, Issue 5) (which contains the Cochrane Eyes and Vision Trials Register) in the Cochrane Library (searched 11 May 2020) ([Appendix 1](#)).
- MEDLINE Ovid (1946 to 11 May 2020) ([Appendix 2](#)).
- Embase Ovid (1980 to 11 May 2020) ([Appendix 3](#)).

- International Standard Randomised Controlled Trial Number (ISRCTN) registry(www.isrctn.com/editAdvancedSearch; searched 11 May 2020) ([Appendix 4](#)).
- US National Institutes of Health Ongoing Trials Register ClinicalTrials.gov(www.clinicaltrials.gov; searched 11 May 2020) ([Appendix 5](#)).
- World Health Organization (WHO) International Clinical Trials Registry Platform (ICTRP) (www.who.int/ictrp; searched 11 May 2020) ([Appendix 6](#)).

Searching other resources

We searched reference lists of included trial reports and related systematic reviews to identify additional potentially relevant trials. We contacted medical device companies conducting studies on PBM for information about any ongoing or completed but not published data. We also searched abstracts from the annual meetings of the:

- European VitreoRetinal Society (2006 to 2018);
- European Society of Retina Specialists (2009 to 2018);
- American Academy of Ophthalmology (2000 to 2018);
- American Society of Retinal Surgeons (2017 to 2018); and
- Association for Research in Vision and Ophthalmology for ongoing trials (2006 to 2018).

Data collection and analysis

Selection of studies

Both review authors independently screened the titles and abstracts resulting from the searches using web-based software ([Covidence](#)). We assessed full-text articles of potentially relevant trials and contacted trial investigators for further information if required. We resolved discrepancies as to whether or not studies met inclusion criteria through discussion. We recorded excluded studies and the reasons for exclusion.

For potentially eligible studies identified on trials registers, we sought data using the following methods.

- If the study completed in May 2018 or earlier, we searched for publications of this trial and contacted the investigators if necessary to obtain published or unpublished data from the trial. If eligible, we included the study in the review irrespective of whether we could identify a publication.
- If the study had a completion date of May 2018, or in the future, we documented the study in the ongoing studies section.

Data extraction and management

Both review authors extracted data independently using an online form developed by Cochrane Eyes and Vision, and Covidence. We resolved discrepancies through discussion. We made two attempts to contact trial investigators for missing data. We imported data directly into Review Manager 5 (RevMan 5) ([Review Manager 2014](#)). One author checked the accuracy of the data import.

Study characteristics

We collected the following information on study characteristics ([Appendix 7](#)).

- Study design: parallel group RCT/within-person RCT/one or both eyes reported
- Participants: country, total number of participants, age, sex, inclusion and exclusion criteria
- Intervention and comparator details: including number of people (eyes) randomised to each group
- Intervention details in terms of wavelength, dose, fluence, intensity, coverage, treatment time, frequency, intervals, total number of sessions and route of administration
- Primary and secondary outcomes as measured and reported in the trials
- Adverse events
- Length of follow-up
- Date study conducted
- Sample size and study power
- Funding and conflicts of interest
- Trial registration, if available

Outcome data

We extracted, separately, the following data from each included study, for both intervention and comparator groups.

- Mean, standard deviation and number of participants on which outcome measured for continuous variables (visual acuity, contrast sensitivity, reading speed, LLD score)
- Number of events and number of participants on which outcome data collected for dichotomous variables (adverse events)

When ETDRS letter visual acuity was reported, we converted it to logMAR prior to data entry into the review; more negative logMAR represented better visual function.

Assessment of risk of bias in included studies

Both review authors independently assessed the risk of bias using Cochrane's 'Risk of bias' tool for assessing risk of bias in each included study (Higgins 2011). We resolved disagreements through discussion. We considered the following sources of bias.

- Selection bias (random sequence generation, allocation concealment): was the sequence of allocation generated using a random procedure and was the allocation concealed to people recruiting and enrolling participants and to participants?
- Performance bias (masking of participants and researchers): were the recipients of care unaware of their assigned intervention? Were persons providing care unaware of the assigned intervention?
- Detection bias (masking of outcome assessors): were persons evaluating outcomes unaware of the assigned intervention?
- Attrition bias: were the rates of follow-up and compliance similar in the groups? Was the analysis by intention-to-treat and were there any post-randomisation exclusions?
- Selective outcome reporting bias: is there any evidence that the outcomes measured have not been reported?

We graded each domain as low risk of bias, high risk of bias or unclear (lack of information or uncertainty of potential for bias).

Measures of treatment effect

We calculated mean difference for the following continuous outcomes: visual acuity, contrast sensitivity, reading speed and LLD score. It was not possible to check for skewness of continuous data which were reported as change from baseline (Altman 1996). We calculated risk ratio for adverse events.

Unit of analysis issues

PBM can be applied unilaterally or bilaterally. Usually it is applied to the affected eye(s). A pilot interventional study showed bilateral drusen size reduction when an ultra low-energy nanosecond laser was applied unilaterally in AMD-affected eyes (Guymer 2014; Jobling 2015). Application to only one eye may have an effect in the fellow eye, although the evidence is unclear and beyond the scope of this review.

Eyes and people

Trials may randomise one or both eyes to the intervention or comparator. The ALIGHT trial analysis was based on one eye per participant and there was no unit of analysis issue. In this case, investigators documented how the eye was selected. However, the LIGHTSITE I trial included more than one eye from some participants. Participants were randomly allocated to treatment or sham treatment but both eyes were included and reported for some participants. It is unclear whether LIGHTSITE I investigators adjusted for within-person correlation in the tabulated data presented.

Cross-over trials

Cross-over trials are feasible; however, the washout period of the PBM therapy is undetermined which would make designing a cross-over trial difficult. We identified no cross-over trials.

Dealing with missing data

As intention-to-treat (ITT) data were not available, we performed available case analysis which assumed that data are missing at random. We did not impute missing data. We assessed whether this assumption was reasonable by collecting data from each included trial on the number of participants excluded or lost to follow-up and reasons for loss to follow-up by treatment group.

Assessment of heterogeneity

We examined overall characteristics of studies - in particular, the type of participants and types of interventions - to assess the extent to which the studies were similar enough to make pooling study results sensible. We assessed forest plots to check for consistency between studies, in particular, the size and direction of effects. We calculated I^2 , which is the percentage of the variability in effect estimates that is due to heterogeneity rather than sampling error (chance) (Higgins 2002). There were no outcomes with I^2 values over 50% which would have indicated substantial inconsistency. We also considered Chi^2 P value. A P value less than 0.1 indicated statistical significance of the Chi^2 test.

Assessment of reporting biases

We used the 'Risk of bias' assessment tool (Higgins 2011) to look for selective or incomplete reporting (see [Assessment of risk of bias in included studies](#)).

Data synthesis

We pooled results using a fixed-effect model in RevMan 5 for comparisons containing two studies. If the effects were in different directions and I^2 greater than 50% and P value less than 0.1, we did not pool data but instead gave a description of the pattern of the individual study results.

Subgroup analysis and investigation of heterogeneity

Subgroup analysis to compare the effect of treatment in early, intermediate and late non-exudative-AMD was not possible.

Sensitivity analysis

We examined the impact of excluding: studies at high risk of bias in one or more domains; unpublished data; and industry-funded data.

Summary of findings and assessment of the certainty of the evidence

We prepared a 'Summary of findings' table presenting relative and absolute risks for the following outcomes at 12 months.

- Mean best-corrected visual acuity
- Mean contrast sensitivity
- Mean near vision
- Mean LLD score
- Mean reading speed
- Mean vision-related quality of life score

- Adverse events

Two authors independently graded the overall certainty of the evidence for each outcome using the GRADE classification (GRADEpro GDT).

RESULTS

Description of studies

See [Characteristics of included studies](#).

Results of the search

The electronic searches yielded 445 records ([Figure 1](#)). After 56 duplicates were removed, the Cochrane Information Specialist (CIS) screened the remaining 389 records and removed 348 records that were not within the scope of the review. We identified two reports of trials from handsearching conference abstracts and, along with the 41 records identified by the CIS searches, we screened 43 records for potential inclusion in the review. We excluded 30 records based on information in the title and abstract, and obtained full-text reports of 13 records for further investigation. We included two studies (five reports) - ([ALIGHT](#) and [LIGHTSITE I](#)) - and excluded five reports of five studies; see [Characteristics of excluded studies](#) for details. Three ongoing studies ([NCT03878420 \(LIGHTSITE II\)](#), [NCT04065490 \(LIGHTSITE III\)](#) and [NCT03859245](#)), potentially met the inclusion criteria and will be assessed when data become available, see [Characteristics of ongoing studies](#).

Figure 1. Study flow diagram.

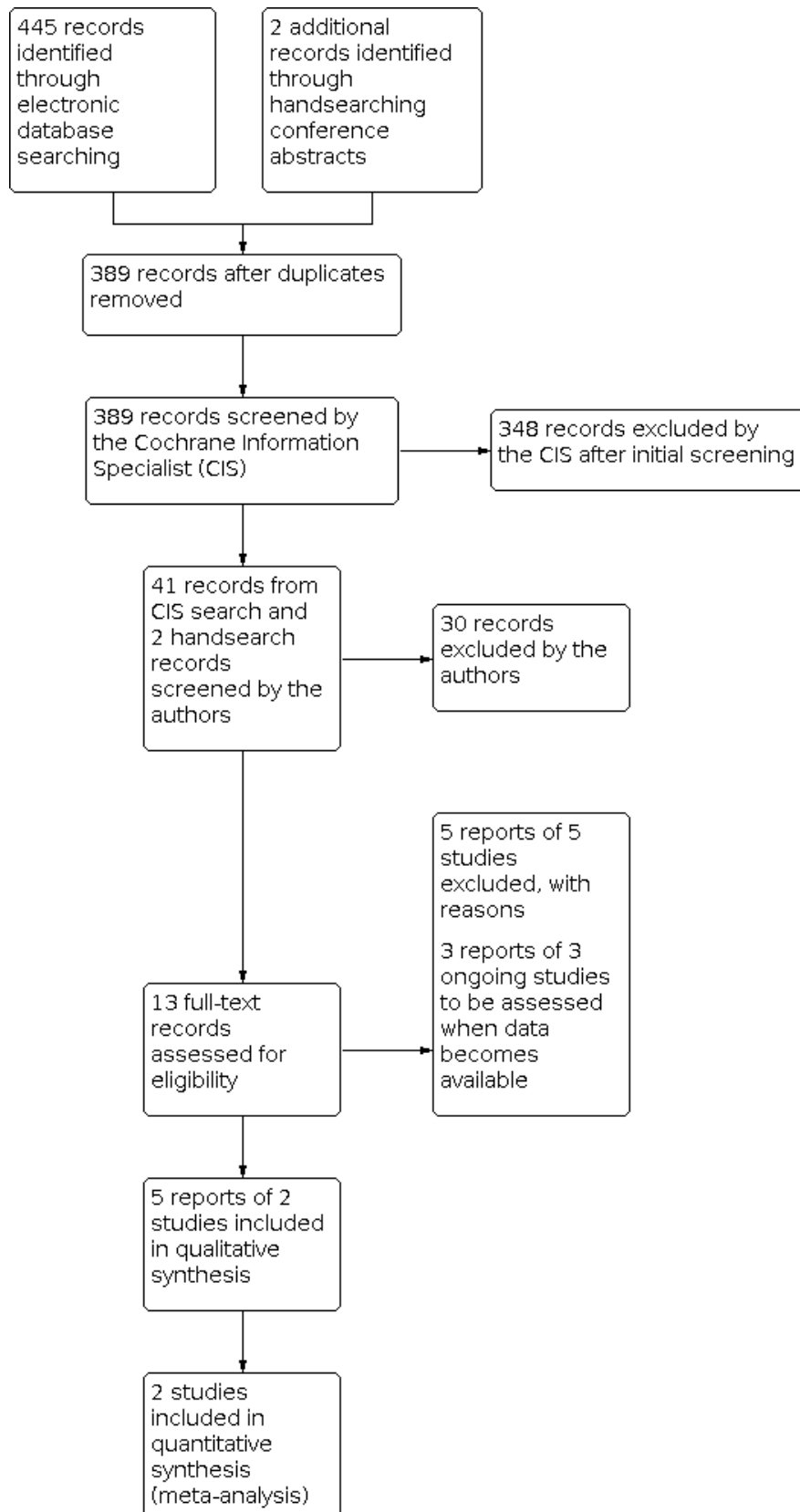


Figure 1. (Continued)

synthesis
(meta-analysis)

Included studies

We included two published RCTs from single centres in the UK ([ALIGHT](#)) and Canada ([LIGHTSITE I](#)), which recruited 60 participants and 30 participants (46 eyes), respectively. One study compared single wavelength PBM with no treatment ([ALIGHT](#)). This study was at risk of performance bias because the treatment and control were different. One study compared multi-wavelength PBM with sham treatment and was at risk of bias due to conflict of interests held by study investigators ([LIGHTSITE I](#)).

The average age of participants ranged between 76 years ([LIGHTSITE I](#)) and approximately 78 years ([ALIGHT](#)). The percentage of women enrolled ranged from 57% in [ALIGHT](#) to 60% in [LIGHTSITE I](#). Participants in these trials were people with non-exudative AMD with Age-Related Eye Disease Study (AREDS) categories 2 (early) to 4 (advanced non-exudative) in the treatment eye. In the [ALIGHT](#) study, approximately 33.3% of participants had AREDS category 4 (advanced non-exudative) i.e. foveal involving geographic atrophy, and in the [LIGHTSITE I](#) study, approximately 43.5% of eyes enrolled were AREDS category 4.

[ALIGHT](#) was a single centre RCT conducted at Bristol Eye Hospital, Bristol, UK. It enrolled 60 participants with AREDS grades 2 to 4 and ETDRS BCVA score of 0.3 logMAR or better in the study eye. Participants were randomly assigned to receive LED-PBD (505 nm) or no treatment in the study eye. PBM was delivered for 8 hours every night for 12 months via Noctura 500 mask. All participants were receiving ranibizumab injections for neovascular AMD in the fellow eye. The structural and functional primary outcome was disease progression. Disease progression was defined as the proportion of participants developing advanced AMD or an increase in drusen volume beyond test-retest 95% confidence intervals at 12 months in the study eye. Investigators assessed participants on a monthly basis with optical coherence tomography (OCT) imaging to allow measurement of drusen volume and assess for the development of neovascular AMD. A co-primary outcome measure was the change in cone τ time to recover sensitivity to 63% pre-bleach value at 12 months. Secondary outcome measures included: change in ETDRS BCVA, drusen volume, chromatic and flicker thresholds, self-reported visual function (VFQ-48), health-related quality of life (EQ-5D) and the ranibizumab re-treatment rate in the fellow eye. Safety and acceptability outcomes included 12 month compliance data, change in self-reported sleep disturbance and adverse events.

The [LIGHTSITE I](#) pilot study was a double-masked RCT comparing multi-wavelength PBM with sham treatment in 30 people (46 eyes). Participants with AREDS classification 2 to 4 (non-exudative) were included. Participants with visual significant cataracts or other ocular diseases were excluded. PBM treatment was administered with a multi-wavelength system, the Valeda™ light delivery system emitting yellow (590 nm 5 mW/cm²), red (660 nm, 65 mW/cm²), and near-infra red (850 nm, 8 mW/cm²) wavelengths via light-emitting diodes (LED). The total treatment time was 4 minutes 10 seconds and consisted of four phases. First, pulsed yellow and NIR wavelengths were delivered through the participants' open

eyes for 35 seconds, followed by continuous red wavelength for 90 seconds through the participants' closed eyes. This was then repeated. Sham treatment emitted lower 660 nm wavelength dose by approximately a factor of 100, producing a slightly duller light. The 850 nm (non-visible light) was not provided in the sham treatment. Participants received sham or PBM for 4 to 5 minutes/eye three times a week for three weeks which was then repeated 6 months from baseline. [LIGHTSITE I](#) demonstrated an improvement in BCVA, contrast sensitivity and reduction in central drusen volume and thickness at 3 months. Initial results demonstrated that PBM therapy was more beneficial in people with early stage non-exudative AMD with better vision (more than 74 letters ETDRS BCVA). The majority of a subset of high PBM responders, with more than 5 letter ETDRS improvement, did not have foveal involving geographical atrophy (AREDS 2 or 3). The Valeda™ light delivery system obtained CE marking in 2018 but is limited to investigational use by the Food & Drug Administration (FDA). The results of [LIGHTSITE I](#) have informed a larger multi-centre RCT, [NCT03878420](#) ([LIGHTSITE II](#)).

Ongoing studies

We also identified three eligible ongoing RCTs from clinical trials database search ([NCT03878420](#) ([LIGHTSITE II](#)); [NCT04065490](#) ([LIGHTSITE III](#)); [NCT03859245](#)).

We identified two RCTs, comparing PBM with sham treatment, from the searches of clinical trial registries ([NCT03878420](#) ([LIGHTSITE II](#)), [NCT04065490](#) ([LIGHTSITE III](#))). [NCT03878420](#) ([LIGHTSITE II](#)) and [NCT04065490](#) ([LIGHTSITE III](#)) are double-masked, sham-controlled, prospective multi-site studies for the use of PBM as a treatment for non-exudative AMD using the Valeda™ Light Delivery System. [NCT03878420](#) ([LIGHTSITE II](#)) aims to enrol 144 participants and [NCT04065490](#) ([LIGHTSITE III](#)) aims to enrol 96 participants with early to intermediate AMD (AREDS 2 to 3), excluding centre involving geographic atrophy and an ETDRS BCVA letter score of between 50 and 75. [NCT03878420](#) ([LIGHTSITE II](#)) is expected to reach completion by December 2020 and [NCT04065490](#) ([LIGHTSITE III](#)) by June 2022. Wavelengths 590 nm and 850 nm are delivered together through the open eyelid and the 660 nm wavelength delivered through the closed eyelid. Sham 660 nm wavelength dose is lower than the treatment dose by approximately a factor of 100, producing a slightly duller light. BCVA, contrast sensitivity, and central drusen volume and thickness are some of the outcome measures set.

The third RCT ([NCT03859245](#)) compares PBM and a ketogenic diet with PBM alone for the treatment of retinal disorders. [NCT03859245](#) is an ongoing open label RCT due to complete in September 2020. PBM therapy is delivered via Joovv red light/infrared LED device, three times per week, 20 minutes per session. The primary outcome for the non-exudative AMD group is reduction in size and number of drusen in early and intermediate stages of non-exudative AMD.

Excluded studies

We excluded five full-text articles: one investigated subthreshold nanosecond laser ([Guymer 2018](#)); two were prospective case series

(TORPA I 2012; TORPA II 2016); and two were retrospective case series (Ivandic 2008; Koev 2018). None met the inclusion criteria. We have provided the reasons for exclusion in the [Characteristics of excluded studies](#) table.

Risk of bias in included studies

Risk of bias assessments are detailed in the [Characteristics of included studies](#) table and are summarised in [Figure 2](#).

Figure 2. Risk of bias summary: review authors' judgements about each risk of bias item for included study.

		Random sequence generation (selection bias)				
		Allocation concealment (selection bias)				
		Blinding of participants and personnel (performance bias): All outcomes				
		Blinding of outcome assessment (detection bias): All outcomes				
		Incomplete outcome data (attrition bias): All outcomes				
		Selective reporting (reporting bias)				
ALIGHT			+	+	-	?
LIGHTSITE I			?	?	+	+

Allocation

ALIGHT generated an unpredictable sequence, combined with an adequate allocation sequence concealment method to prevent

selection bias. Random permuted blocks were computer generated with varying block sizes, stratified for AMD AREDS grading. LIGHTSITE I did not report the method of randomisation or allocation concealment.

Blinding

In ALIGHT, two independent graders assessed fundus images according to AREDS simplified severity scale. There was no masking of the participant and trial investigator to the intervention. However, treating clinicians at the AMD clinic were masked to the intervention. Automated drusen volume assessment was made at baseline and at monthly follow-up visits using software available for the Cirrus OCT imaging system. Masked treating ophthalmologists determined the development of advanced AMD at monthly follow-up appointments in the AMD clinic.

In LIGHTSITE I, participants and investigators were masked to the treatment. Masked independent graders assessed baseline and follow-up fundus images and OCT scans. Masking of LIGHTSITE I was achieved by sham wavelengths and identical graphical user interfaces and outputs from the Valeda instrumentation.

Incomplete outcome data

Nine of 30 (30%) participants from the intervention arm withdrew primarily due to mask discomfort, compared to three of 30 (10%) participants who withdrew from the control group (ALIGHT). It was unclear how investigators handled missing data of drusen volume for participants who withdrew. It appears that participants who withdrew for reasons other than conversion to exudative AMD were excluded from treatment effect analysis. ALIGHT reported six protocol violations where four control and two intervention participants were assessed outside the schedule window of 12 months ± 4 weeks. Investigators collected drusen volume data for 24 participants on average 7.2 ± 2.89 weeks after the final study visit. Compliance with wearing the treatment mask was 78%.

Investigators of LIGHTSITE I reported complete primary outcome data at one month for both arms of the study. However, at 12 months there was missing BCVA data for two eyes in the sham group and one eye in the PBM group. It is unclear if missing data from the sham group at 12 months was due to loss of follow-up. Investigators performed intention-to-treat analysis.

Selective reporting

Although ALIGHT authors commented on all outcomes listed in the protocol (see McKeague 2014), LIGHTSITE I authors reported

on all prespecified outcomes, did not report adequately on non-significant results. The ALIGHT investigators provided unpublished summary data of non-significant results upon request to avoid bias in future meta-analysis.

In the ALIGHT study, investigators did not report adverse events according to CONSORT guidelines (Ioannidis 2004), as overall absolute risk per arm, per adverse event type data were not provided. Investigators did not fully report the seriousness of adverse events, and it was unclear if any adverse events were recurrent events in the same participant.

It remains unclear whether PBM application to only one eye may have an effect in the fellow eye. None of the other studies identified investigated the effect of PBM to the fellow eye.

Other potential sources of bias

There was an insufficient number of studies included in this review to assess the likelihood of potential publication bias. Two authors of ALIGHT declared a personal financial interest. Five LIGHTSITE I study authors declared some type of fees from LumiThera Inc., which manufactures Valeda Light Delivery System and three authors are employees at LumiThera Inc.

Effects of interventions

See: Summary of findings 1 Photobiomodulation treatment compared to sham or no treatment for non-exudative age-related macular degeneration

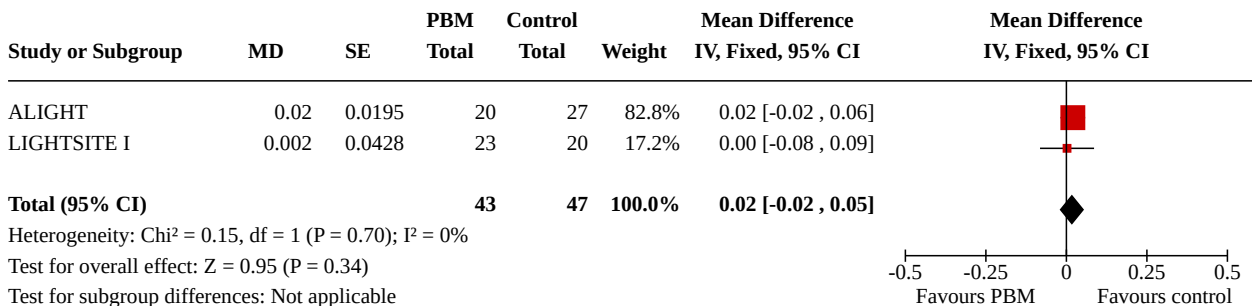
See Summary of findings 1 for PBM versus control treatment in non-exudative AMD.

Primary outcome

Best-corrected visual acuity at 12 months

When comparing PBM with sham treatment or no treatment control for non-exudative AMD, we found no meaningful clinical difference in BCVA (mean difference (MD) 0.02 logMAR, 95% confidence interval (CI) -0.02 to 0.05; 2 RCTs, 90 eyes; low-certainty evidence) at 12 months. There was no heterogeneity of effect (I² = 0%; P value = 0.34). There was uncertainty and the confidence intervals included the line of no effect (Figure 3).

Figure 3. Forest plot of comparison: 1 PBM treatment versus no treatment for non-exudative AMD, outcome: 1.1 BCVA at 12 months [LogMar].



The LIGHTSITE I study was underpowered for its primary outcome BCVA at 12 months. Participants received two series of multiple-wavelength PBM treatments six months apart. Each series

consisted of nine treatment sessions (three sessions per week). By 12 months follow-up, participants would have received two series of multiple-wavelength PBM treatments or sham treatment. There

was no difference in BCVA between the two groups at 12 months. Observed improvements in BCVA after PBM treatment diminished with time to baseline BCVA levels, suggesting that a treatment interval shorter than six months is needed to maintain therapeutic effect. Similarly, ALIGHT showed no difference in BCVA between participants receiving single-wavelength PBM and no treatment at one year (MD 0.02 logMAR, 95% CI -0.02 to 0.06).

Secondary outcomes

Best-corrected visual acuity at 3 months

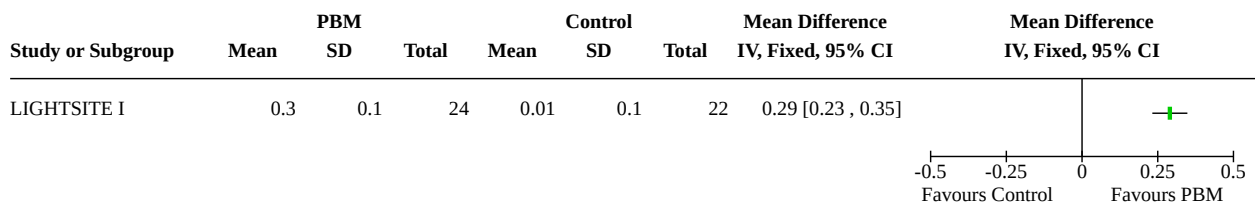
Both studies reported this outcome at three months (Analysis 1.2). We found a statistical difference in BCVA (MD -0.07 logMAR, 95% CI -0.13 to 0.00; P = 0.03; 2 RCTs, 78 eyes) at three months, although not clinically meaningful (less than 1 line gain on the logMAR chart). There was no heterogeneity of effect (I² = 0%; P value = 0.46). Both effect estimates were in the same direction (-0.11 and -0.05).

At three months after receiving the first series of multiple-wavelength PBM, treated participants showed an average increase in BCVA of 4.1 (±5.4) letters compared to 1.4 (±6) ETDRS letters in the sham group (LIGHTSITE I). Both groups had similar baseline BCVA. ALIGHT showed no difference in BCVA between participants receiving single-wavelength PBM and no treatment at three months (MD -0.11 logMAR, 95% CI -0.24 to 0.02; P = 0.10).

Contrast sensitivity

LIGHTSITE I showed an improvement in contrast sensitivity at Level E (18 cycles/degree) that was maintained at 12 months (MD 0.29 LogCS, 95% CI 0.23 to 0.35; 1 RCT, 46 eyes; low-certainty evidence) (Figure 4). This trend was not observed for contrast sensitivity at Levels A, B, C and D. ALIGHT did not measure contrast sensitivity.

Figure 4. Forest plot of comparison: 1 PBM treatment versus control for non-exudative AMD, outcome: 1.3 Contrast sensitivity at 12 months Level E [18cycles/degree].

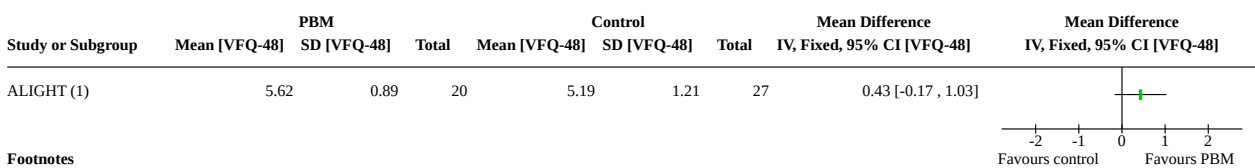


Vision-related quality of life score

In ALIGHT, quality of life scores for: visual function (VFQ-48 score) (MD 0.43, 95% CI -0.17 to 1.03; 1 RCT, 47 eyes; P = 0.16; Figure 5); health-related quality of life (EQ-5D score) (MD -0.03, 95% CI -0.14 to 0.08; P = 0.58; Analysis 1.5); and sleep quality (PSQI) were comparable between the PBM and control groups. Although

there was a high attrition rate in the PBM group due to mask discomfort, in LIGHTSITE I, investigators assessed quality of life (QOL) using Visual Function Questionnaire-25 (VFQ-25), which showed an overall improvement in QOL composite score and a perceived improvement with PBM in relation to difficulties in daily activities at three months (P = 0.003), seven months (P = 0.015) and nine months (P = 0.003).

Figure 5. Forest plot of comparison: 1 PBM treatment versus control for non-exudative AMD, outcome: 1.4 Self-reported visual function [VFQ-48].



Footnotes
(1) Unpublished data

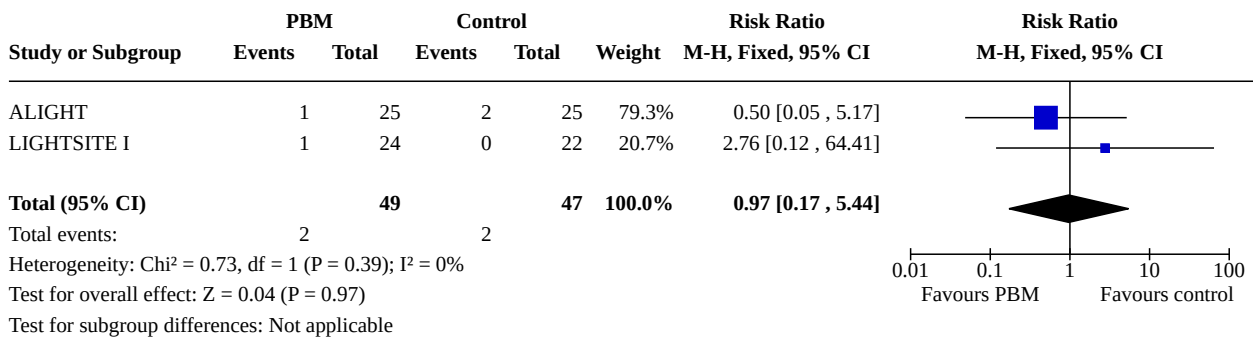
Adverse events

Conversion to exudative AMD

Both studies reported conversion to exudative AMD at 12 months (Figure 6). There was no heterogeneity (I² = 0%; P value = 0.39).

In ALIGHT, fewer eyes receiving PBM converted to exudative AMD. However, in LIGHTSITE I, one eye converted to exudative AMD. There remains uncertainty as the confidence intervals included 1 (risk ratio (RR) 0.97, 95% CI 0.17 to 5.44; 2 RCTs, 96 eyes), and it is an infrequent event within this follow-up period.

Figure 6. Forest plot of comparison: 1 PBM treatment versus control for non-exudative AMD, outcome: 1.6 Conversion to exudative AMD.



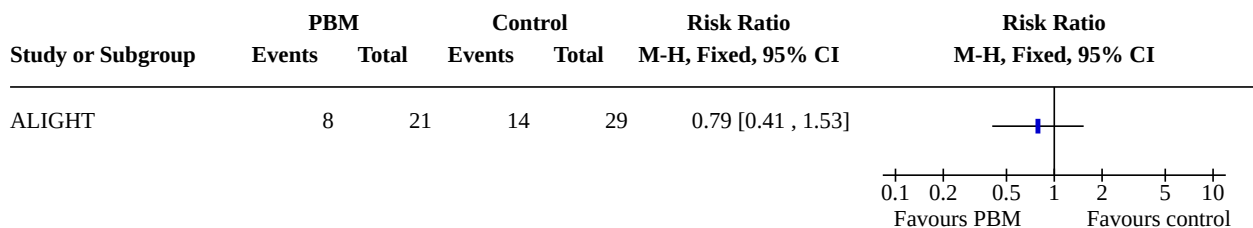
ALIGHT reported 33 adverse events (eight were ocular) and nine serious adverse events (of which three related to conversion of exudative AMD). Of the eight ocular adverse events, four were in the PBM group. None of the adverse or serious adverse events were considered by the investigators to be associated with the PBM. There was no significant difference found between the re-treatment rate with anti-vascular endothelial growth factor (VEGF) injections for exudative AMD in the fellow eye.

In LIGHTSITE I, there was a total of 21 adverse events: four participants in the sham group reported five adverse events whereas seven participants in the PBM group reported 16 adverse events. None of these adverse events were considered to be related to the PBM treatment by investigators. One eye converted to neovascular AMD in the PBM group within one month of receiving treatment. There was no significant difference in growth of geographic atrophy lesion between PBM and sham treatment groups at 12 months.

Disease progression

ALIGHT reported disease progression and defined it as the onset of advanced AMD or significant increase in drusen volume beyond test-retest 95% confidence intervals (95% CIs) within 12 months (Figure 7). One participant in the PBM group and two participants in the control group developed exudative AMD during the 12 months follow-up period. There was no difference in drusen volume at 12 months between PBM and no treatment (MD -0.02 mm³, 95% CI -0.04 to 0.0; P = 0.06). When number of participants who developed advanced AMD and significant increase of drusen volume were combined, there remained no difference in the overall disease progression between PBM and no treatment (RR 0.79, 95% CI 0.41 to 1.53; P = 0.48). The PBM group exhibited greater delay in cone dark adaptation at 12 months compared to the control group (MD 1 minute, 95% CI 0.68 to 1.32; P < 0.001).

Figure 7. Forest plot of comparison: 1 PBM treatment versus no treatment for non-exudative AMD, outcome: 1.5 AMD progression at 12 months.



We downgraded the quality of the evidence due to performance and attrition biases, and insufficient sample size. The included studies did not measure these outcomes: near vision, LLD score, loss of 15 or more EDTRS letters, and reading speed.

DISCUSSION

Summary of main results

Two published RCTs met our inclusion criteria investigating single-wavelength PBM (ALIGHT) and multi-wavelength PBM (LIGHTSITE I) for non-exudative AMD. We found three ongoing RCTs: NCT03878420 (LIGHTSITE II) and NCT04065490 (LIGHTSITE III) investigating multi-wavelength PBM compared to sham treatment

for non-exudative AMD; and NCT03859245 comparing PBM and a ketogenic diet with PBM alone for the treatment of retinal disorders.

ALIGHT investigated single wavelength 505 nm organic light-emitting diode (OLED) in participants with non-exudative AMD in the study eye. Evidence from this study suggests PBM 505 nm OLED may disrupt retinal physiology by prolonging dark adaptation. It would be interesting to elucidate if this change is temporary and for how long these effects are sustained. Despite the apparent delay in dark adaptation amongst the PBM group on testing cone adaptation time, participants were not symptomatic. There was no difference in disease progression between participants receiving

PBM and no treatment, although the follow-up period was limited to only 12 months. Just over a quarter (26%) of participants withdrew within three months of treatment as a result of mask-related issues such as discomfort.

LIGHTSITE I demonstrated some improvement in BCVA and contrast sensitivity (Level E 18 cycles/degree) following multi-wavelength PBM in non-exudative AMD. However, the therapeutic effects of multi-wavelength PBM diminished by six months after treatment, suggesting a shorter time interval between treatments is needed to maintain benefit. Post-hoc analysis identified high PBM responders as participants with earlier stage disease without foveal involving geographic atrophy. The findings of **LIGHTSITE I** have informed the inclusion criteria and treatment regime for **NCT03878420 (LIGHTSITE II)** and **NCT04065490 (LIGHTSITE III)** studies, which will exclude patients with central involving geographic atrophy and will schedule PBM treatment series at four-monthly intervals with follow-up periods of nine months and 21 months, respectively.

We have also described other relevant studies identified in the searches in order to comment on the current evidence base for clinical practice. There was the **TORPA I 2012** pilot study and **TORPA II 2016**, both interventional case series, which investigated multi-wavelength LED-PBM (590 nm, 4 mW; 670 nm, 50 mW; 790 nm, 0.6 mW; pulsed at 2.5 Hz; 0.1 J/cm²/treatment) through open or closed eyes in non-exudative AMD. LED-PBM was delivered by two off-label instruments (Warp10 and Gentlewaves) sequentially three times per week for six weeks. The investigators for **LIGHTSITE I** conducted these studies. **TORPA I 2012** investigated functional outcomes of LED-PBM in non-exudative AMD. Although improvement in visual acuity and contrast sensitivity was maintained at 12 months, there was some decline after four months, suggesting a repeat dosing to maintain therapeutic effect. **TORPA II 2016** expanded clinical outcomes to include functional and morphological endpoints. It evaluated 24 participants (42 eyes), of which nine had foveal involving geographic atrophy. Compared to **LIGHTSITE I**, **TORPA II 2016** recruited fewer participants with advanced non-exudative AMD (AREDS 4). Participants with a baseline BCVA between 70-89 EDTRS letters were more likely to gain more than 5 letters with LED-PBM. **TORPA II 2016** reported an improvement in mean BCVA of 5.14 EDTRS letters, contrast sensitivity (0.16 three cycles per degree), drusen volume (decrease by 0.029 mm³) and thickness (decrease by 0.34 µm) at three months. Evaluation of optical coherence tomography (OCT) and colour funduscopy showed that drusen regression did not contribute to new geographic atrophy formation.

Two interventional case control studies in a mixed AMD population showed visual improvement in eyes treated with LLLT-PBM. **Ivandic 2008** conducted the largest retrospective case series to date in a heterogenous group of AMD patients, non-exudative and exudative forms with or without cataracts. In this study, treatment consisted of transscleral delivery of low level laser therapy (LLLT), as a semiconductor laser diode 780 nm (7.5 mW, 292 Hz, spot diameter 3 mm) with continuous emission, to irradiate the macula. Investigators delivered treatment for 40 seconds (0.3 J/cm²) resulting in a total dose of 1.2 J/cm². The treatment schedule consisted of twice weekly sessions for two weeks. Investigators treated 193 participants (328 eyes) with PBM and 10 participants (20 eyes) received sham treatment. A greater proportion of eyes without cataracts gained 3 or more Snellen lines compared to eyes with cataracts (40.4% versus 28.6%). It was not clear how long

improved visual function was maintained as follow-up ranged from three to 36 months. Neither local nor systemic adverse effects were observed. Over a quarter of the eyes receiving PBM were exudative AMD and showed a reduction in oedema and bleeding but no sub-group analysis was performed. It was not clear if participants with exudative AMD received treatment with anti-VEGF therapy. **Koev 2018** conducted the longest case control study to date in participants with all stages of AMD. In this study, treatment consisted of transpupillary delivery of LLLT, a helium-neon (He-NE) laser with continuous emission at 633 nm (0.1 mW/cm²), to the macula for three minutes on alternative days for 12 days. Eight of 66 eyes that received PBM were exudative AMD. The study did not report the proportion of eyes with foveal involving geographical atrophy. At five year follow-up, Koev and colleagues reported visual improvement from baseline in 93.9% of eyes (62/66) receiving PBM, of these 19% (12/62) gained 3 or more lines. Surprisingly, there was no change in vision in the control group at five years.

Ivandic 2008 and **Koev 2018** reported no local or systemic adverse effects. However, these studies did not define harms particularly well. We would suggest proactive reporting of the proportion of participants who progress to advanced AMD (exudative or non-exudative) or time to progression to advanced AMD; loss of 3 lines ETDRS BCVA; deterioration in low luminance BCVA; in addition to the incidence and severity of other ocular conditions. Where possible, studies should report clinical characteristics as described in the International Consortium for Health Outcomes Measurement Macular Degeneration Standard Set (**Rodrigues 2016**), and more specifically for trials assessing geographic atrophy (**Krezel 2019**), so that data can be more easily compared across studies. Data from available case series suggest some benefit from PBM in improving vision, contrast sensitivity and drusen volume in early AMD, but whether it meets minimally clinically important differences is unclear. Longer follow-up durations is warranted to assess prevention of progression to advanced AMD.

Equivalence between LED-PBM and LLLT-PBM, as well as continuous emission versus pulsed laser, in the treatment of retinal injury has not been elucidated from pre-clinical studies and will remain controversial until future studies compare them. PBM dosimetry can be very complicated as altering any one of the parameters may impact the biological effect. There is no international consensus on PBM dosimetry as this would need to be specifically tailored for the tissue type and disease. The first PBM therapy to be approved by National Institute for Health and Care Excellence (NICE) in 2018 was for preventing or treating oral mucositis caused by radiotherapy or chemotherapy (**NICE 2018**). PBM in this field continues to have a wide range of dosing schedules. However, the evidence base lacks clarity on PBM route of administration, spectral analysis and dosimetry for retinal disease. The World Association of Laser Therapy has published a consensus agreement on key dosimetric parameters of PBM as part of item 4 of the CONSORT guidelines (**WALT 2004**). It recommends reporting laser type, wavelength, delivery mode, peak power, beam irradiation area, power density, irradiation duration, fluence, number of treatments, dose per treatment and cumulative dose.

We excluded subthreshold micropulse laser therapy from this review. Although this treatment is designed to minimise thermal retinal tissue damage, it causes RPE cell damage visible on histology (**Yu 2013**), and has a different mechanism of action to PBM. Subthreshold nanosecond laser treatment with a 532

nm Q-switched neodymium-doped yttrium-aluminum-garnet laser with 3 ns pulse duration for intermediate AMD did not slow progression to advanced AMD (Guymer 2018). However, post hoc analysis showed a change in effect direction (hazard ratio 0.23) in participants without reticular pseudodrusen, advocating caution when considering treatment for this clinical phenotype. Future PBM studies should carefully characterise the clinical phenotypes included and adequately power the study to allow for subgroup analysis, potentially identifying non-responders.

Overall completeness and applicability of evidence

Our search strategy is likely to have returned all relevant articles in this area. Handsearching returned two conference proceedings and one report. We identified an exploratory study in Russian which compared different PBM wavelengths in non-exudative AMD (Abramov 1996), but we could not retrieve the full-text. The updated evidence remains incomplete for three main reasons. Firstly, the applicability of this review is limited by the lack of studies of sufficient quality. Short-term benefits observed with PBM in the observational studies could be neither confirmed nor refuted with enough confidence in this current review. Secondly, the long-term beneficial effects, if any, in terms of favourable structural and functional outcomes are not yet known. Thirdly, uncertainty remains regarding the safety profile of PBM therapy in treated and fellow eyes.

Quality of the evidence

We have assessed the quality of evidence for single and multiple wavelength PBM therapies with the reasons for downgrading shown in [Summary of findings 1](#). Two published studies met the inclusion criteria for this review, and we graded them as high risk in at least one or more domain. We intended to include all primary and secondary outcomes of the review in the 'Summary of findings' table. However, many of the outcomes were not reported in the included studies. We graded the overall quality of evidence as low and very low for all reported outcomes. As such, further research is very likely to have an important impact on the effect estimate and is likely to change the estimate.

Potential biases in the review process

We followed standard Cochrane methods to minimise potential biases in the review process. Most outcomes of the review were not reported in the included studies. We are contacting the authors of the studies to collect additional information on these outcomes. Also, we could not perform a subgroup analysis according to type of PBM due to paucity of studies.

Agreements and disagreements with other studies or reviews

Compared to a recent review, we identified additional studies (Waugh 2018).

AUTHORS' CONCLUSIONS

Implications for practice

Currently there remains uncertainty whether PBM treatment is beneficial in slowing progression of non-exudative macular degeneration. Low-certainty evidence comparing PBM with sham treatment or no treatment showed no clinically meaningful difference in BCVA and contrast sensitivity at 12 months. Further research is likely to have an important impact on the confidence in the estimate of effect and may change the estimate. There is no evidence comparing low level laser therapy with LED-PBM, or transpupillary delivery with a transscleral route of administration. There is a need for further well-designed controlled trials assessing dosimetry, powered for both effectiveness and safety outcomes. Consideration should be given to the adoption of core clinical outcomes measures that include patient-based outcome measures.

Implications for research

This review raises several issues for further trials in PBM. Future trials should be powered appropriately and include definitions of success that reflect more clinically relevant gains in visual acuity than the lower levels reported to date. Several important outcomes that we pre-specified in the review protocol (Henein 2018), but are under-investigated, deserve more attention in future trials. These include near vision, low luminance vision and reading speed. Methodologically, there are several modifications that future trials could make to minimise bias. Specifically, trials would benefit from standardised methods for allocation concealment and clear reporting of these methods. Additionally, studies could decrease bias by following an intention-to-treat analysis and by including all randomised participants in all analyses from all follow-up time points, and by using multiple imputation methods for missing data when necessary. It would also be beneficial to increase the sample size in trials to make subgroup analyses possible or power the studies appropriately to assess specific disease subtypes.

In conclusion, the role of PBM in the management of non-exudative macular degeneration remains unclear. With growing use of PBM therapy in the treatment of many retinal diseases, further adequately powered trials that compare PBM with sham treatment or carefully designed outcome masking, and other PBM treatment parameters, are needed for improved patient care.

ACKNOWLEDGEMENTS

Cochrane Eyes and Vision (CEV) created and executed the electronic search strategies. We thank Anupa Shah (Managing Editor for CEV) and the CEV UK editorial base for their assistance with this review and Tim Jackson and Noemi Lois for peer review.

REFERENCES

References to studies included in this review

ALIGHT {published data only}

Robinson DG, Margrain TH, Dunn MJ, Bailey C, Binns AM. Low-level nighttime light therapy for age-related macular degeneration: a randomized clinical trial. *Investigative Ophthalmology and Visual Science* 2018;**59**(11):4531-41.

LIGHTSITE I {published data only (unpublished sought but not used)}

* Markowitz SN, Devenyi RG, Munk MR, Croissant CL, Tedford SE, Rückert R, et al. A double-masked, randomized, sham-controlled, single-center study with photobiomodulation for the treatment of dry age-related macular degeneration. *Retina* 2020 Aug;**40**(8):1471-1482. [DOI: [10.1097/IAE.0000000000002632](https://doi.org/10.1097/IAE.0000000000002632)]

Markowitz SN. LIGHTSITE1: a double-masked, randomized, sham-control study with photobiomodulation in dry AMD subjects. secure.aao.org/aa0/meeting-archive 2018.

Munk MR, Markowitz SN, Devenyi R, Croissant C, Tedford S, Rückert R, et al. Final analysis of LIGHTSITE I: a double-masked, randomized, sham-controlled study with photobiomodulation in dry age-related macular degeneration subjects. *Investigative Ophthalmology and Visual Science* 2018;**59**(11):ARVO E-abstract 2415.

References to studies excluded from this review

Guymer 2018 {published data only}

Guymer RH, Wu Z, Hodgson LA, Caruso E, Brassington KH, Tindill N, et al. Subthreshold nanosecond laser intervention in age-related macular degeneration. The LEAD randomised controlled clinical trial. *Ophthalmology* 2019;**126**(6):829-38.

Ivandic 2008 {published data only}

Ivandic BT, Ivandic T. Low-level laser therapy improves vision in patients with age-related macular degeneration. *Photomedicine and Laser Surgery* 2008;**26**(3):241-5.

Koev 2018 {published data only (unpublished sought but not used)}

Koev K, Avramov L, Borissova E. Five-year follow-up of low-level laser therapy (LLLT) in patients with age-related macular degeneration (AMD). *Journal of Physics: Conference Series* 2018;**992**(1):012061. [DOI: [10.1088/1742-6596/992/1/012061](https://doi.org/10.1088/1742-6596/992/1/012061)]

TORPA I 2012 {published data only}

Merry G, Devenyi R, Dotson R, Markowitz SN, Reyes SV. Treatment of dry age-related macular degeneration with photobiomodulation. www.lumithera.com/wp-content/uploads/sites/7/TORPA-Clinical-Study.pdf (accessed 10 December 2018).

TORPA II 2016 {published data only}

Merry GF, Munk MR, Dotson RS, Walker MG, Devenyi RG. Photobiomodulation reduces drusen volume and improves

visual acuity and contrast sensitivity in dry age-related macular degeneration. *Acta Ophthalmologica* 2016;**95**(4):e270-7.

References to ongoing studies

NCT03859245 {published data only}

NCT03859245. Photobiomodulation and ketogenic diet for treatment of mid-periphery retinal disorders for Alzheimer's disease prevention. clinicaltrials.gov/ct2/show/NCT03859245 (first received 1 March 2019).

NCT03878420 (LIGHTSITE II) {published data only}

NCT03878420. Study of photobiomodulation to treat dry age-related macular degeneration (LIGHTSITE II). clinicaltrials.gov/ct2/show/NCT03878420 (first received 18 March 2019).

NCT04065490 (LIGHTSITE III) {published data only}

NCT04065490. Study of photobiomodulation to treat dry age-related macular degeneration (LIGHTSITE III). clinicaltrials.gov/ct2/show/NCT04065490 (first received 22 August 2019).

Additional references

Abramov 1996

Abramov MV, Egorov EA. Dependence of the efficiency of low-intensity laser therapy in involution chorioretinal dystrophy on a used wavelength. *Vestnik Oftalmologii* 1996;**112**(2):25-6.

Altman 1996

Altman DG, Bland JM. Detecting skewness from summary information. *BMJ* 1996;**313**:1200.

Arden 2010

Arden GB, Gündüz MK, Kurtenbach A, Völker M, Zrenner E, Gündüz SB, et al. A preliminary trial to determine whether prevention of dark adaptation affects the course of early diabetic retinopathy. *Eye* 2010;**24**(7):1149-55.

AREDS 2001

Age-Related Eye Disease Study Research Group. A randomized, placebo-controlled, clinical trial of high-dose supplementation with vitamins C and E, beta carotene, and zinc for age-related macular degeneration and vision loss: AREDS report number 8. *Archives of Ophthalmology* 2001;**119**(10):1417-36.

Begum 2013

Begum R, Powner MB, Hudson N, Hogg C, Jeffery G. Treatment with 670 nm light up regulates cytochrome C oxidase expression and reduces inflammation in an age-related macular degeneration model. *PLoS One* 2013;**8**(2):e57828.

Berdeaux 2005

Berdeaux GH, Nordmann JP, Colin E, Arnould B. Vision-related quality of life in patients suffering from age-related macular degeneration. *American Journal of Ophthalmology* 2005;**139**(2):271-9.

Covidence [Computer program]

Veritas Health Innovation Covidence. Version accessed 21 June 2020. Melbourne, Australia: Veritas Health Innovation. Available at www.covidence.org.

Fitzgerald 2013

Fitzgerald M, Hodgetts S, Van Den Heuvel C, Natoli R, Hart NS, Valter K, et al. Red/near-infrared irradiation therapy for treatment of central nervous system injuries and disorders. *Reviews in Neuroscience* 2013;**24**(2):205-26.

Fuma 2015

Fuma S, Murase H, Kuse Y, Tsuruma K, Shimazawa M, Hara H. Photobiomodulation with 670 nm light increased phagocytosis in human retinal pigment epithelial cells. *Molecular Vision* 2015;**21**:883-92.

Glanville 2006

Glanville JM, Lefebvre C, Miles JN, Camosso-Stefinovic J. How to identify randomized controlled trials in MEDLINE: ten years on. *Journal of the Medical Library Association* 2006;**94**(2):130-6.

GRADEpro GDT [Computer program]

McMaster University (developed by Evidence Prime) GRADEpro GDT. Version accessed 22 June 2020. Hamilton (ON): McMaster University (developed by Evidence Prime). Available at gradepro.org.

Guymer 2014

Guymer RH, Brassington KH, Dimitrov P, Makeyeva G, Plunkett M, Xia W, et al. Nanosecond-laser application in intermediate AMD: 12-month results of fundus appearance and macular function. *Clinical and Experimental Ophthalmology* 2014;**42**(5):466-79.

Henein 2018

Henein C, Steel DH. Photobiomodulation for non-exudative age-related macular degeneration. *Cochrane Database of Systematic Reviews* 2018, Issue 5. Art. No: CD013029. [DOI: [10.1002/14651858.CD013029](https://doi.org/10.1002/14651858.CD013029)]

Higgins 2002

Higgins J, Thompson SG. Quantifying heterogeneity in a meta-analysis. *Statistics in Medicine* 2002;**21**(11):1539-58.

Higgins 2011

Higgins JP, Altman DG, Sterne JA, editors. Chapter 8: Assessing risk of bias in included studies. In: Higgins JP, Green S, editors. *Cochrane Handbook for Systematic Reviews of Interventions* Version 5.1.0 (updated March 2011). The Cochrane Collaboration, 2011. Available from handbook.cochrane.org.

Ioannidis 2004

Ioannidis JP, Evans SJ, Gotzsche PC, O'Neill RT, Altman DG, Schulz K, et al. Better reporting of harms in randomized trials: an extension of the CONSORT statement. *Annals of Internal Medicine* 2004;**141**(10):781-8.

James Lind Alliance 2013

James Lind Alliance Sight Loss and Vision Priority Setting Partnership. Setting Priorities for Eye Research. www.sightlosspsp.org.uk 2018.

Jobling 2015

Jobling AI, Guymer RH, Vessey KA, Greferath U, Mills SA, Brassington KH, et al. Nanosecond laser therapy reverses pathologic and molecular changes in age-related macular degeneration without retinal damage. *FASEB Journal* 2015;**29**(2):696-710.

Klein 2007

Klein R, Klein BE, Knudtson MD, Meuer SM, Swift M, Gangnon RE. Fifteen-year cumulative incidence of age-related macular degeneration: the Beaver Dam Eye Study. *Ophthalmology* 2007;**114**(2):253-62.

Kokkinopoulos 2013

Kokkinopoulos I, Colman A, Hogg C, Heckenlively J, Jeffery G. Age-related retinal inflammation is reduced by 670 nm light via increased mitochondrial membrane potential. *Neurobiology of Aging* 2013;**34**(2):602-9.

Krezel 2019

Krezel AK, Hogg R, Lohfeld L, Chakravarthy U, Azuara-Blanco A. Core outcomes for geographic atrophy trials. *British Journal of Ophthalmology* 2019 December 17 [Epub ahead of print]. [DOI: [10.1136/bjophthalmol-2019-314949](https://doi.org/10.1136/bjophthalmol-2019-314949)]

Li 2020

Li JQ, Welchowski T, Schmid M, Mauschitz MM, Holz FG, Finger RP. Prevalence and incidence of age-related macular degeneration in Europe: a systematic review and meta-analysis. *British Journal of Ophthalmology* 2020;**104**(8):1077-84.

Macular Society 2017

Macular Society. Your guide to age-related macular degeneration. [www.macularsociety.org/sites/default/files/resource/Macular Society Guide to AMD accessible pdf MS002 JUN17.pdf](http://www.macularsociety.org/sites/default/files/resource/Macular%20Society%20Guide%20to%20AMD%20accessible%20pdf%20MS002%20JUN17.pdf) (accessed prior to 31 October 2017).

McKeague 2014

McKeague C, Margrain TH, Bailey C, Binns AM. Low-level night-time light therapy for age-related macular degeneration (ALight): study protocol for a randomized controlled trial. *Trials* 2014;**15**:246.

NICE 2018

National Institute for Health and Care Excellence. Low-level laser therapy for preventing or treating oral mucositis caused by radiotherapy or chemotherapy. www.nice.org.uk/guidance/ipg615 (accessed 10 December 2018).

Owsley 2006

Owsley C, McGwin G Jr, Scilley K, Kallies K. Development of a questionnaire to assess vision problems under low luminance in age-related maculopathy. *Investigative Ophthalmology and Visual Science* 2006;**47**(2):528-35.

Review Manager 2014 [Computer program]

Nordic Cochrane Centre, The Cochrane Collaboration Review Manager 5 (RevMan 5). Version 5.3. Copenhagen: Nordic Cochrane Centre, The Cochrane Collaboration, 2014.

RNIB 2009

Minassian D, Reidy A, RNIB. Future sight loss in the decade 2010 to 2020: an epidemiological and economic model. www.rnib.org.uk/sites/default/files/FSUK_Report_2.doc (accessed prior to 31 October 2017).

Rodrigues 2016

Rodrigues IA, Sprinkhuizen SM, Barthelmes D, Blumenkranz M, Cheung G, Haller J, et al. Defining a minimum set of standardized patient-centered outcome measures for macular degeneration. *American Journal of Ophthalmology* 2016;**168**:1-12.

Rutar 2012

Rutar M, Natoli R, Albarracin R, Valter K, Provis J. 670-nm light treatment reduces complement propagation following retinal degeneration. *Journal of Neuroinflammation* 2012;**26**(9):257.

Sanderson 2018

Sanderson TH, Wider JM, Lee I. Inhibitory modulation of cytochrome c oxidase activity with specific near-infrared light wavelengths attenuates brain ischemia/reperfusion injury. *Scientific Reports* 2018;**8**(1):article number 3481.

Scilley 2002

Scilley K, Jackson GR, Cideciyan AV, Maguire MG, Jacobson SG, Owsley C. Early age-related maculopathy and self-

reported visual difficulty in daily life. *Ophthalmology* 2002;**109**(7):1235-42.

Sivapathasuntharam 2017

Sivapathasuntharam C, Sivaprasad S, Hogg C, Jeffery G. Aging retinal function is improved by near infrared light (670 nm) that is associated with corrected mitochondrial decline. *Neurobiology of Aging* 2017;**52**:66-70.

WALT 2004

World Association of Laser Therapy. Consensus agreement on the design and conduct of clinical studies with low level laser therapy and light therapy for musculoskeletal pain and disorders. Available at waltza.co.za/wp-content/uploads/2012/08/walt_standard_for_conduct_of_randomized_controlled_trials.pdf.

Waugh 2018

Waugh N, Loveman E, Colquitt J, Royle P, Yeong JL, Hoad G, et al. Treatments for dry age-related macular degeneration and Stargardt disease: a systematic review. *Health Technology Assessment* 2018;**22**(27):1.

Yu 2013

Yu AK, Merrill KD, Truong SN, Forward KM, Morse LS, Telander DG. The comparative histologic effects of subthreshold 532- and 810-nm diode micropulse laser on the retina. *Investigative Ophthalmology and Visual Science* 2013;**54**(3):2216-24.

* Indicates the major publication for the study

CHARACTERISTICS OF STUDIES
Characteristics of included studies [ordered by study ID]
ALIGHT
Study characteristics

Methods	Phase I/IIa, prospective, parallel group, single-centre, unmasked, randomised controlled trial One eye selected, non-exudative age-related macular degeneration
Participants	Country: United Kingdom Number of people randomised: 60 Age: range 55 to 88 years Sex: 57% female Inclusion criteria: <ul style="list-style-type: none"> • between the ages of 55 and 88 years. • Early Treatment of Diabetic Retinopathy Study (ETDRS) visual acuity of 0.3 logMAR or better (in study eye) • early age-related macular degeneration (in study eye) • exudative age-related macular degeneration (in fellow eye) Exclusion criteria: <ul style="list-style-type: none"> • other ocular pathology • significant systemic disease or medication known to affect visual function

ALIGHT (Continued)

- systemic disease that would compromise participation
- insufficient English language comprehension
- cognitive impairment
- oxygen mask worn at night

Equivalence of baseline characteristics

Interventions	Intervention: Noctura 500 eye mask (LED 505 nm 23 scotopic Trolands) worn eight hours every night for 12 months n = 30 Comparator: no treatment n = 30
Outcomes	Primary outcomes: <ul style="list-style-type: none"> • increase in drusen volume beyond test-retest repeatability limits or a progression to advanced age-related macular degeneration at 12 months • rate of retinal adaptation at 12 months Secondary outcomes: <ul style="list-style-type: none"> • change in drusen volume at 12 months • change in time constant of cone dark adaptation • adverse events • compliance • the number of ranibizumab re-treatments (in fellow eye) • changes in visual chromatic thresholds • visual acuity at 3 months (unpublished) and 12 months • change in psychophysical 14 Hz flicker thresholds • change in self-reported outcome measures, including health-related quality of life (EQ-5D), visual function (VFQ-48) and sleep quality questionnaire (PSQI) Contrast sensitivity, near vision, low luminance deficit score, loss of 15 or more EDTRS letters and reading speed were not reported.
Notes	Study name: Alight Dates of recruitment of participants: 04/2014 to 02/2015 Sources of funding: research grant from the College of Optometrists, London, UK Declaration of interest: two authors declared a personal financial interest, indicating they are "inventor/developer designated on a patent, patent application, copyright, or trade secret, whether or not the patent, copyright, etc. is presently licensed or otherwise commercialized, which is the subject matter of your publication or could be in competition with the technology described". Trial investigators were contacted. Trial registration: ISCTRN 82148651

Risk of bias

Bias	Authors' judgement	Support for judgement
Random sequence generation (selection bias)	Low risk	Computer-generated randomisation sequence using permuted blocks stratified according to AREDS scores 2, 3 and 4.
Allocation concealment (selection bias)	Low risk	Randomisation allocation number provided in envelopes to study investigator.

ALIGHT (Continued)

Blinding of participants and personnel (performance bias) All outcomes	High risk	Participants and personnel unmasked to treatment. Clinicians treating fellow eye with neovascular age-related macular degeneration masked to treatment.
Blinding of outcome assessment (detection bias) All outcomes	Unclear risk	Masking of treating clinicians; however, communication from participants could remove masking. Assessors of primary outcome were masked but not for secondary outcomes.
Incomplete outcome data (attrition bias) All outcomes	High risk	Compliance with wearing treatment mask was 78%. Nine participants withdrew from study due to mask discomfort. Drusen volume data was missing for 24 participants. Final visits for six participants were conducted outside study protocol.
Selective reporting (reporting bias)	Low risk	All outcomes mentioned in the protocol were reported.

LIGHTSITE I
Study characteristics

Methods	<p>Double-masked randomised sham-controlled single-centre trial</p> <p>One eye or both eyes selected, non-exudative age-related macular degeneration</p>
Participants	<p>Country: Canada</p> <p>Number of participants randomised: 30 (46 eyes)</p> <p>Age: 76 years</p> <p>Sex: 60% female</p> <p>Inclusion criteria:</p> <ul style="list-style-type: none"> • non-exudative age-related macular degeneration AREDS categories 2 to 4 • best-corrected visual acuity ETDRS letter score between 50 and 85 (Snellen equivalent 20/40 and 20/200) <p>Exclusion criteria:</p> <ul style="list-style-type: none"> • previous or active neovascular age-related macular degeneration • other significant retinal or medical disease • history of epilepsy • cognitive impairment <p>Equivalence of baseline characteristics</p> <p>43.5% of eyes included were AREDS 4 with foveal involving geographic atrophy.</p>
Interventions	<p>Intervention: LT-300 multi-wavelength treatment 590 nm, 670 nm, and 850 nm delivered 3 times a week for 3 weeks then repeated after 6 months. Treatment lasted total of 5 minutes per eye.</p> <p>Comparator: Sham treatment using LT-300 system delivered 3 times a week for 3 weeks then repeated after 6 months.</p>
Outcomes	<p>Primary outcome:</p> <ul style="list-style-type: none"> • visual acuity change from baseline to 12 months

LIGHTSITE I (Continued)

Secondary outcomes:

- contrast Sensitivity
- central drusen thickness, central drusen volume
- geographic atrophy area
- retinal volume and central retinal thickness
- visual function questionnaire (VFQ-25)
- adverse events

Notes	Study Name: LIGHTSITE I Dates of recruitment of participants: not reported Sources of funding: National Institutes of Health, National Eye Institute #3R43EY025508-01S1 Declarations of interest: five authors declared a conflict of interest with manufacturer of photobiomodulation device, LumiThera. Three authors are employees of LumiThera. Trial investigators were contacted. Trial registration: NCT02725762
-------	--

Risk of bias

Bias	Authors' judgement	Support for judgement
Random sequence generation (selection bias)	Unclear risk	No mention of how randomisation was conducted.
Allocation concealment (selection bias)	Unclear risk	Allocation concealment was not described.
Blinding of participants and personnel (performance bias) All outcomes	Low risk	Participants and personnel were masked to treatment.
Blinding of outcome assessment (detection bias) All outcomes	Low risk	The Valeda instrumentation was designed in such a way that user interface and outputs were identical for treatment and sham modalities. The operator used the machine under a cloth shield to prevent any accidental viewing of incidental light during treatment. A masked independent expert reviewed optical coherence tomography and fundus autofluorescence images.
Incomplete outcome data (attrition bias) All outcomes	Low risk	Two participants withdrew from the sham group: one after month 1 due to long commute and the other did not attend final follow up at month 12. An intention-to-treat analysis was performed for the primary outcome measure.
Selective reporting (reporting bias)	Low risk	All outcomes mentioned in the clinical trials register and methods section were reported.

Characteristics of excluded studies [ordered by study ID]

Study	Reason for exclusion
Guymer 2018	Subthreshold nanosecond laser

Study	Reason for exclusion
Ivandic 2008	Retrospective case series
Koev 2018	Retrospective case series in mixed type age-related macular degeneration
TORPA I 2012	Non-peer-reviewed prospective case series
TORPA II 2016	Prospective case series in non-exudative age-related macular degeneration

Characteristics of ongoing studies [ordered by study ID]

NCT03859245

Study name	Photobiomodulation & Ketogenic Diet for Treatment of Mid-periphery Retinal Disorders (Diabetic Retinopathy, Dry AMD, Hard Drusen Formation) for Alzheimer's Disease Prevention
Methods	Open label, randomised controlled trial, parallel group
Participants	Diabetic retinopathy, age-related macular degeneration, mid-peripheral drusen formation, diabetic macular oedema
Interventions	<p>Experimental: photobiomodulation therapy, via Joovv red light/infrared LED device, three days/week, 20 minutes per session and a clinically prescribed ketogenic diet.</p> <p>Comparator: photobiomodulation therapy, via Joovv red light/infrared LED device, three days/week, 20 minutes per session.</p>
Outcomes	<p>Primary:</p> <ul style="list-style-type: none"> diabetic retinopathy - improvement in number and severity of haemorrhages and hard and soft exudates diabetic macular oedema pathology - lower incidence of macular oedema non-exudative age-related macular degeneration pathology - reduction in size and number of drusen in early and intermediate stages of age-related macular degeneration pathology hard drusen in the mid-periphery pathology - reduction in size and/or density of drusen <p>Secondary:</p> <ul style="list-style-type: none"> haemoglobin A1c fasting insulin fasting glucose homeostatic model assessment of insulin resistance (HOMA-IR) triglycerides/high-density lipoprotein (HDL) ratio
Starting date	February 2019
Contact information	Kelly Gibas kgibas@bristleconemedical.com Julie Gomer jgomer@bristleconemedical.com
Notes	

NCT03878420 (LIGHTSITE II)

Study name	Study of Photobiomodulation to Treat Dry Age-Related Macular Degeneration (LIGHTSITE II)
Methods	Double-masked randomised sham-controlled
Participants	Non-exudative age-related macular degeneration
Interventions	The Valeda™ Light Delivery System delivering 590, 660 and 850nm wavelengths together or the Valeda™ Light Delivery System delivering non-effective treatment of the 590 and 660nm wavelengths together
Outcomes	Primary: <ul style="list-style-type: none"> change from baseline of best-corrected visual acuity at 9 months Secondary: <ul style="list-style-type: none"> mean difference of best-corrected visual acuity contrast sensitivity central drusen volume central drusen thickness
Starting date	February 2019
Contact information	Clark Tedford ctedford@lumithera.com
Notes	

NCT04065490 (LIGHTSITE III)

Study name	Study to Assess the Safety and Efficacy of Photobiomodulation (PBM) in Subjects With Dry Age-Related Macular Degeneration (AMD) (LIGHTSITE III)
Methods	Double-masked, randomised, sham-controlled, parallel group, multi-centre
Participants	Non-exudative age-related macular degeneration
Interventions	Experimental: the Valeda™ Light Delivery System Comparator: the sham mode of the Valeda™ Light Delivery System
Outcomes	Primary: <ul style="list-style-type: none"> best-corrected visual acuity at 21 months Secondary: <ul style="list-style-type: none"> contrast sensitivity central drusen volume central drusen thickness Other: <ul style="list-style-type: none"> visual function questionnaire reading speed geographic atrophy low luminance - best-corrected visual acuity

NCT04065490 (LIGHTSITE III) (Continued)




Starting date	September 2019
Contact information	Clark Tedford ctedford@lumithera.com Cindy Croissant ccroissant@lumithera.com
Notes	

DATA AND ANALYSES

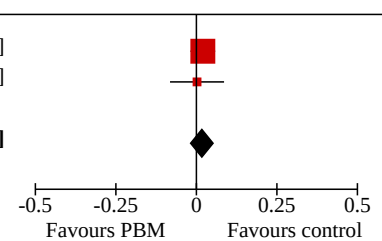
Comparison 1. PBM treatment versus control for non-exudative AMD

Outcome or subgroup title	No. of studies	No. of participants	Statistical method	Effect size
1.1 BCVA at 12 months [LogMar]	2	90	Mean Difference (IV, Fixed, 95% CI)	0.02 [-0.02, 0.05]
1.2 BCVA at 3 months [LogMar]	2	78	Mean Difference (IV, Fixed, 95% CI)	-0.07 [-0.13, -0.00]
1.3 Contrast sensitivity at 12 months Level E [18cycles/degree]	1		Mean Difference (IV, Fixed, 95% CI)	Totals not selected
1.4 Self-reported visual function	1		Mean Difference (IV, Fixed, 95% CI)	Totals not selected
1.5 Health-related quality of life EQ-5D	1		Mean Difference (IV, Fixed, 95% CI)	Totals not selected
1.6 Conversion to exudative AMD	2	96	Risk Ratio (M-H, Fixed, 95% CI)	0.97 [0.17, 5.44]
1.7 AMD progression at 12 months	1		Risk Ratio (M-H, Fixed, 95% CI)	Totals not selected

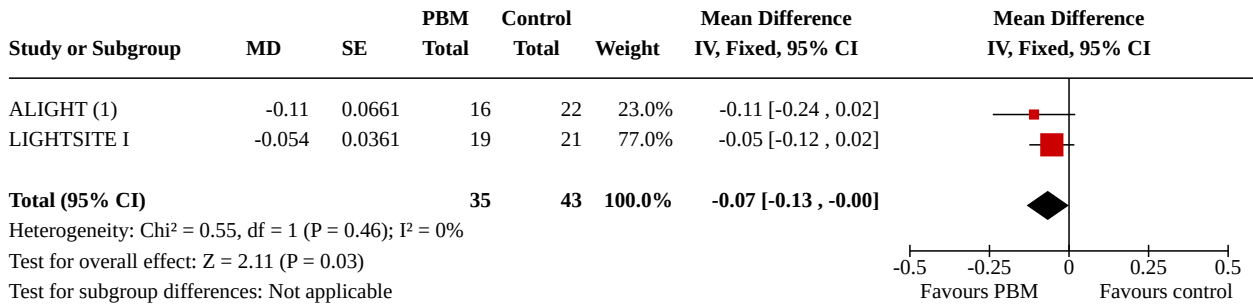
Analysis 1.1. Comparison 1: PBM treatment versus control for non-exudative AMD, Outcome 1: BCVA at 12 months [LogMar]

Study or Subgroup	MD	SE	PBM Total	Control Total	Weight	Mean Difference IV, Fixed, 95% CI	Mean Difference IV, Fixed, 95% CI
ALIGHT	0.02	0.0195	20	27	82.8%	0.02 [-0.02, 0.06]	
LIGHTSITE I	0.002	0.0428	23	20	17.2%	0.00 [-0.08, 0.09]	
Total (95% CI)			43	47	100.0%	0.02 [-0.02, 0.05]	

Heterogeneity: Chi² = 0.15, df = 1 (P = 0.70); I² = 0%
 Test for overall effect: Z = 0.95 (P = 0.34)
 Test for subgroup differences: Not applicable



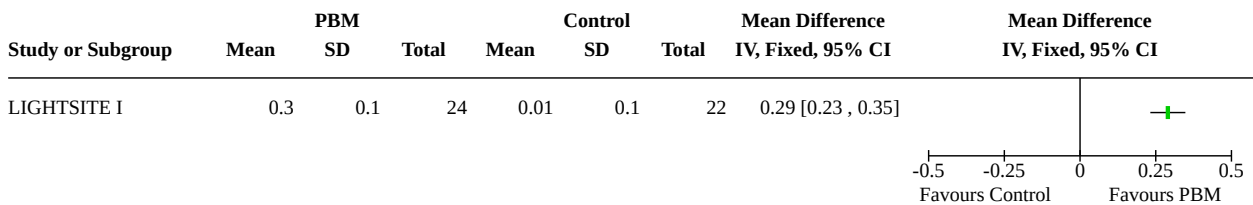
Analysis 1.2. Comparison 1: PBM treatment versus control for non-exudative AMD, Outcome 2: BCVA at 3 months [LogMar]



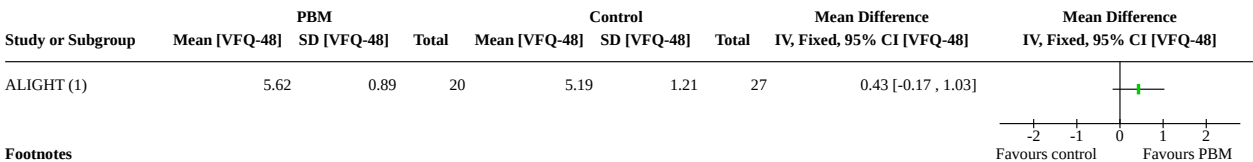
Footnotes

(1) Unpublished data from study investigators

Analysis 1.3. Comparison 1: PBM treatment versus control for non-exudative AMD, Outcome 3: Contrast sensitivity at 12 months Level E [18cycles/degree]



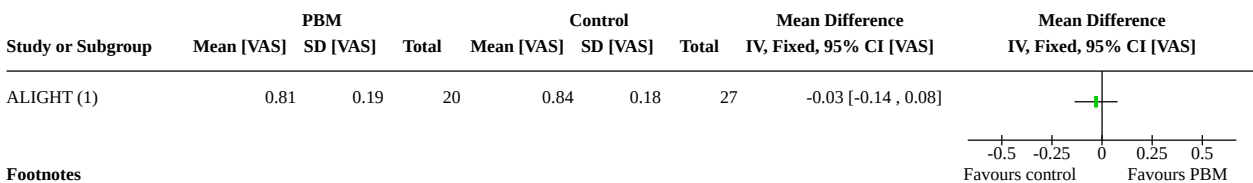
Analysis 1.4. Comparison 1: PBM treatment versus control for non-exudative AMD, Outcome 4: Self-reported visual function



Footnotes

(1) Unpublished data

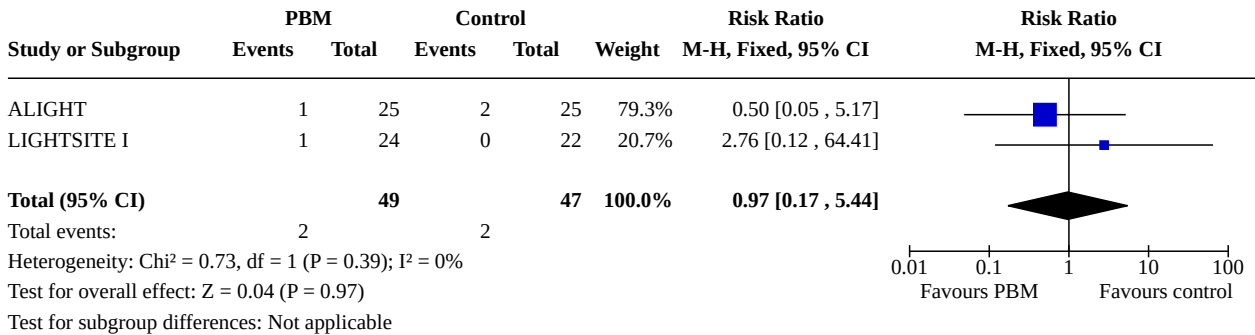
Analysis 1.5. Comparison 1: PBM treatment versus control for non-exudative AMD, Outcome 5: Health-related quality of life EQ-5D



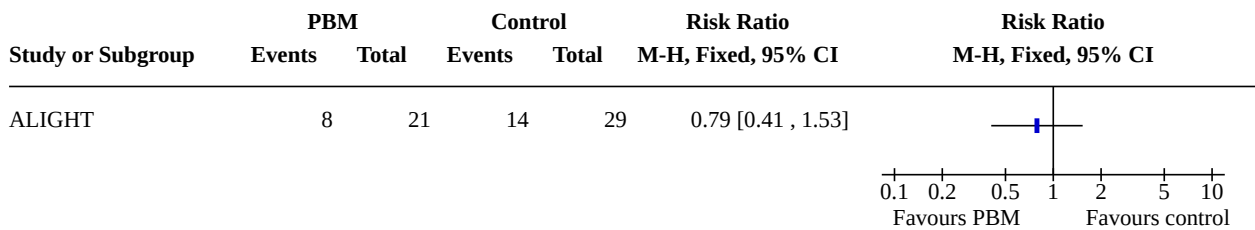
Footnotes

(1) Unpublished data

Analysis 1.6. Comparison 1: PBM treatment versus control for non-exudative AMD, Outcome 6: Conversion to exudative AMD



Analysis 1.7. Comparison 1: PBM treatment versus control for non-exudative AMD, Outcome 7: AMD progression at 12 months



APPENDICES

Appendix 1. CENTRAL search strategy

- #1 MeSH descriptor: [Macular Degeneration] explode all trees
- #2 MeSH descriptor: [Retinal Degeneration] explode all trees
- #3 MeSH descriptor: [Retinal Neovascularization] explode all trees
- #4 MeSH descriptor: [Choroidal Neovascularization] explode all trees
- #5 MeSH descriptor: [Macula Lutea] explode all trees
- #6 macula* near lutea*
- #7 (macula* or retina* or choroid*) near/4 degenerat*
- #8 (macula* or retina* or choroid*) near/4 neovascul*
- #9 AMD or ARMD or maculopath*
- #10 #1 or #2 or #3 or #4 or #5 or #6 or #7 or #8 or #9
- #11 MeSH descriptor: [Low-Level Light Therapy] this term only
- #12 (low near/2 level near/2 light)
- #13 (low near/2 level near/2 laser*)
- #14 (low near/2 power near/2 laser*)
- #15 (low near/2 energy near/2 laser*)
- #16 (low near/2 intensity near/2 laser*)
- #17 (light near/2 based near/2 technolog*)
- #18 light emitting diode*
- #19 (LLLT or LLL or LED-T)
- #20 (photobiomodulat* or PBM or photomodulat*)
- #21 (Gentlewaves or LT-300)
- #22 laser* near/2 (irradiat* or phototherap* or biostimulat*)
- #23 (phototherap* near/2 infrared)
- #24#11 or #12 or #13 or #14 or #15 or #16 or #17 or #18 or #19 or #20 or #21 or #22 or #23
- #25#10 and #24

Appendix 2. MEDLINE Ovid search strategy

1. randomized controlled trial.pt.
2. (randomized or randomised).ab,ti.
3. placebo.ab,ti.
4. dt.fs.
5. randomly.ab,ti.
6. trial.ab,ti.
7. groups.ab,ti.
8. or/1-7
9. exp animals/
10. exp humans/
11. 9 not (9 and 10)
12. 8 not 11
13. exp retinal degeneration/
14. retinal neovascularization/
15. choroidal neovascularization/
16. exp macula lutea/
17. (macula\$ adj2 lutea).tw.
18. ((macul\$ or retina\$ or choroid\$) adj4 degener\$).tw.
19. ((macul\$ or retina\$ or choroid\$) adj4 neovasc\$).tw.
20. (AMD or ARMD or CNV).tw.
21. maculopath\$.tw.
22. or/13-21
23. Low-Level Light Therapy/
24. (low adj2 level adj2 light).tw.
25. (low adj2 level adj2 laser\$).tw.
26. (low adj2 power adj2 laser\$).tw.
27. (low adj2 energy adj2 laser\$).tw.
28. (low adj2 intensity adj2 laser\$).tw.
29. (light adj2 based adj2 technolog\$).tw.
30. light emitting diode\$.tw.
31. (LLLT or LLL or LED-T).tw.
32. (photobiomodulat\$ or PBM or photomodulat\$).tw.
33. (Gentlewaves or LT-300).tw.
34. (laser\$ adj2 (irradiat\$ or phototherap\$ or biostimulat\$)).tw.
35. (phototherap\$ adj2 infrared).tw.
36. or/23-35
37. 22 and 36
38. 12 and 37

The search filter for trials at the beginning of the MEDLINE strategy is from the published paper by [Glanville 2006](#).

Appendix 3. Embase Ovid search strategy

1. exp randomized controlled trial/
2. exp randomization/
3. exp double blind procedure/
4. exp single blind procedure/
5. random\$.tw.
6. or/1-5
7. (animal or animal experiment).sh.
8. human.sh.
9. 7 and 8
10. 7 not 9
11. 6 not 10
12. exp clinical trial/
13. (clin\$ adj3 trial\$).tw.
14. ((singl\$ or doubl\$ or trebl\$ or tripl\$) adj3 (blind\$ or mask\$)).tw.
15. exp placebo/
16. placebo\$.tw.
17. random\$.tw.
18. exp experimental design/

19. exp crossover procedure/
20. exp control group/
21. exp latin square design/
22. or/12-21
23. 22 not 10
24. 23 not 11
25. exp comparative study/
26. exp evaluation/
27. exp prospective study/
28. (control\$ or prospectiv\$ or volunteer\$).tw.
29. or/25-28
30. 29 not 10
31. 30 not (11 or 23)
32. 11 or 24 or 31
33. exp retina macula degeneration/
34. exp retina degeneration/
35. exp retina neovascularization/
36. exp subretinal neovascularization/
37. (AMD or ARMD or CNV).tw.
38. ((macul\$ or retina\$ or choroid\$) adj4 degener\$).tw.
39. ((macul\$ or retina\$ or choroid\$) adj4 neovasc\$).tw.
40. exp retina macula lutea/
41. (macula\$ adj2 lutea\$).tw.
42. maculopath\$.tw.
43. or/33-42
44. low level laser therapy/
45. light emitting diode/
46. (low adj2 level adj2 light).tw.
47. (low adj2 level adj2 laser\$).tw.
48. (low adj2 power adj2 laser\$).tw.
49. (low adj2 energy adj2 laser\$).tw.
50. (low adj2 intensity adj2 laser\$).tw.
51. (light adj2 based adj2 technolog\$).tw.
52. light emitting diode\$.tw.
53. (LLLT or LLL or LED-T).tw.
54. (photobiomodulat\$ or PBM or photomodulat\$).tw.
55. (Gentlewaves or LT-300).tw.
56. (laser\$ adj2 (irradiat\$ or phototherap\$ or biostimulat\$)).tw.
57. (phototherap\$ adj2 infrared).tw.
58. or/44-57
59. 43 and 58
60. 32 and 59

Appendix 4. ISRCTN search strategy

(Condition: Macular Degeneration OR AMD OR ARMD OR CNV AND Interventions: photobiomodulation OR low level light OR low level laser)

Appendix 5. ClinicalTrials.gov search strategy

Interventional Studies | Macular Degeneration OR AMD OR ARMD OR CNV | photobiomodulation OR low light OR low laser

Appendix 6. WHO ICTRP search strategy

Condition = Macular Degeneration OR AMD OR ARMD OR CNV AND Interventions = photobiomodulation OR low level light OR low level laser

Appendix 7. Data on study characteristics

Mandatory items	Optional items
Methods	

(Continued)

Study design	<ul style="list-style-type: none"> · Parallel group RCT <i>i.e. people randomised to treatment</i> · Within-person RCT <i>i.e. eyes randomised to treatment</i> · Cluster RCT <i>i.e. communities randomised to treatment</i> · Cross-over RCT · Other, specify 	Exclusions after randomisation Losses to follow up Number randomised/analysed How were missing data handled? <i>e.g., available case analysis, imputation methods</i>
Eyes or Unit of randomisation/ unit of analysis	<ul style="list-style-type: none"> · One eye included in study, <i>specify how eye selected</i> · Two eyes included in study, both eyes received same treatment, <i>briefly specify how analysed (best/worst/average/both and adjusted for within person correlation/both and not adjusted for within person correlation) and specify if mixture one eye and two eye</i> · Two eyes included in study, eyes received different treatments, <i>specify if correct pair-matched analysis done</i> 	Reported power calculation (Y/N), <i>if yes, sample size and power</i> Unusual study design/issues
Participants		
Country		Setting
Total number of participants	<i>This information should be collected for total study population recruited into the study. If these data are only reported for the people who were followed up only, please indicate.</i>	Ethnic group
Number (%) of men and women		Participation rate
Average age and age range		Equivalence of baseline characteristics (Y/N)
Inclusion criteria		Diagnostic criteria
Exclusion criteria		
Interventions		
Intervention (n =)	· Number of people randomised to each group	
Comparator (n =)	<ul style="list-style-type: none"> · Wavelength of photobiomodulation therapy · Dose, fluence, intensity, coverage, treatment time · Frequency, intervals and total number of sessions · Route of administration · Specify whether another intervention was performed at same time as intervention 	
Outcomes		
Primary and secondary outcomes <i>as defined in study reports</i>	<ul style="list-style-type: none"> · Best-corrected visual acuity at 12 months · Contrast sensitivity · Near visual acuity · Reading speed 	Planned/actual length of follow up · Length of follow up · Loss to follow up

(Continued)

- Low luminance deficit score
- Quality of life score
- Cost benefit data (if available)
- The proportion of participants with worse vision following photobiomodulation therapy. Worse vision is defined by a loss of 15 or more Early Treatment Diabetic Retinopathy Study (ETDRS) letters.
- The proportion of participants who developed new geographic atrophy or progression of geographic atrophy.
- The proportion of participants who developed neovascular macular degeneration.

· Intervals at which outcomes assessed

Notes

Date conducted	Specify dates of recruitment of participants mm/yr to mm/yr	Full study name: <i>(if applicable)</i>
Sources of funding		Reported subgroup analyses (Y/N)
Declaration of interest		Were trial investigators contacted?
		Trial Registration Number: <i>(if applicable)</i>

HISTORY

Protocol first published: Issue 5, 2018
 Review first published: Issue 4, 2021

CONTRIBUTIONS OF AUTHORS

CH prepared the review draft and DS reviewed and edited the draft.
 CH prepared the protocol draft and DS reviewed and edited the draft.

DECLARATIONS OF INTEREST

CH: holds a National Institute for Health Research (NIHR) Academic Clinical Fellowship Award. The views expressed are those of the author(s) and not necessarily those of the NHS, the NIHR or the Department of Health.
 DS: has acted as a consultant to a number of companies unrelated to the subject matter of this review.

SOURCES OF SUPPORT

Internal sources

- No sources of support supplied

External sources

- National Institute for Health Research (NIHR), UK
 - * Richard Wormald, Co-ordinating Editor for Cochrane Eyes and Vision (CEV) acknowledged financial support for his CEV research sessions from the Department of Health through the award made by the National Institute for Health Research to Moorfields Eye Hospital NHS Foundation Trust and UCL Institute of Ophthalmology for a Specialist Biomedical Research Centre for Ophthalmology.
 - * This review was supported by the NIHR, via Cochrane Infrastructure funding to the CEV UK editorial base.
- The views and opinions expressed therein are those of the authors and do not necessarily reflect those of the Systematic Reviews Programme, NIHR, NHS or the Department of Health.

DIFFERENCES BETWEEN PROTOCOL AND REVIEW

We could not conduct an intention-to-treat (ITT) analysis as ITT data was not available in the included trials. As there were fewer than 10 trials included in a meta-analysis, assessment of publication bias was not possible (Chapter 8 of the *Cochrane Handbook for Systematic Reviews of Interventions* [Higgins 2011](#)).