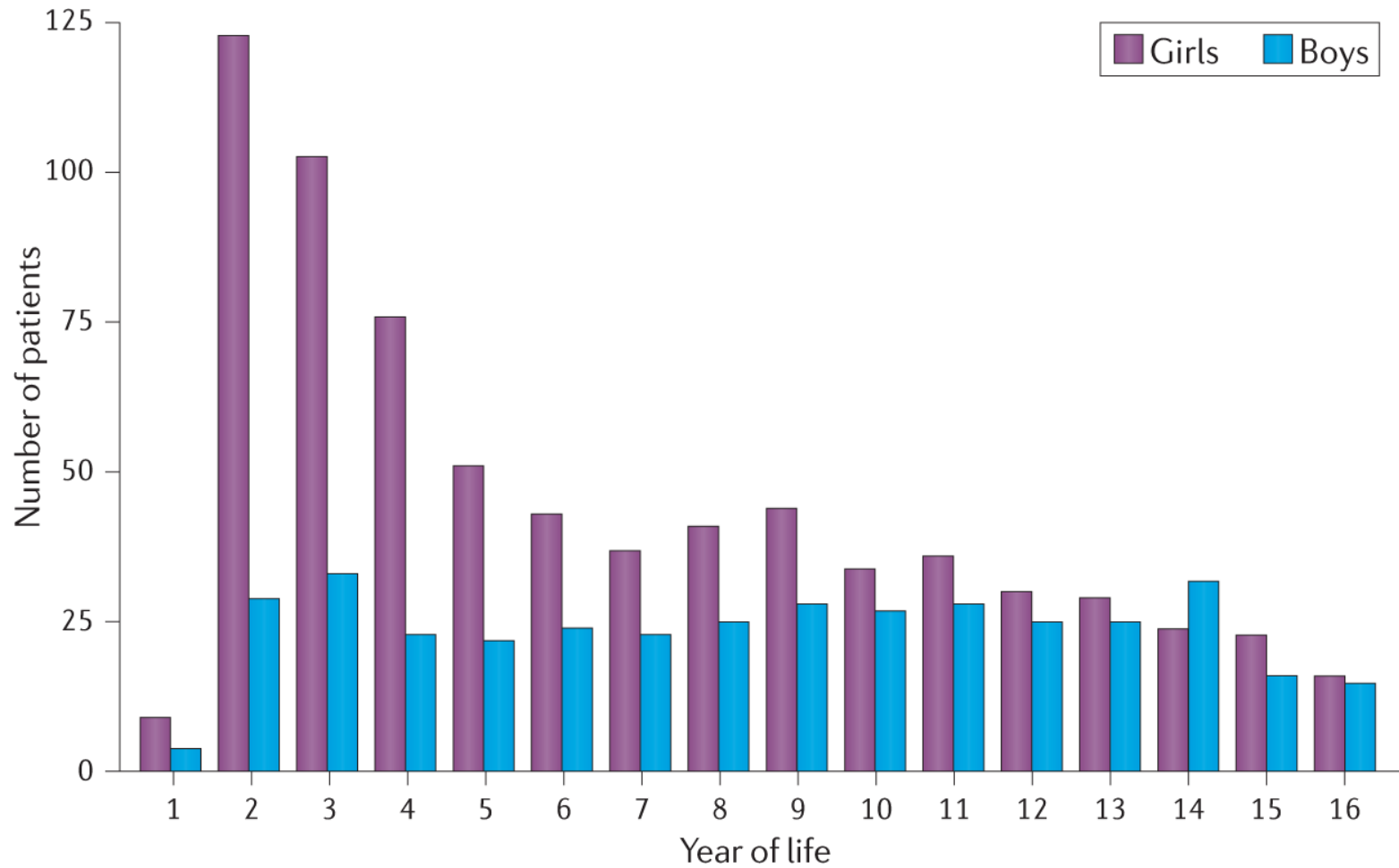


Fig. 1: The epidemiology of juvenile idiopathic arthritis.



Adapted with permission from Saurenmann et al.¹³³, Wiley. Copyright © 2010 by the American College of Rheumatology.

Nigrovic, P.A. et al. Biological classification of childhood arthritis: roadmap to a molecular nomenclature. *Nat. Rev. Rheumatol.* <https://doi.org/10.1038/s41584-021-00590-6> (2021).

Fig. 2: The evolution of classification criteria for childhood-onset arthritis.

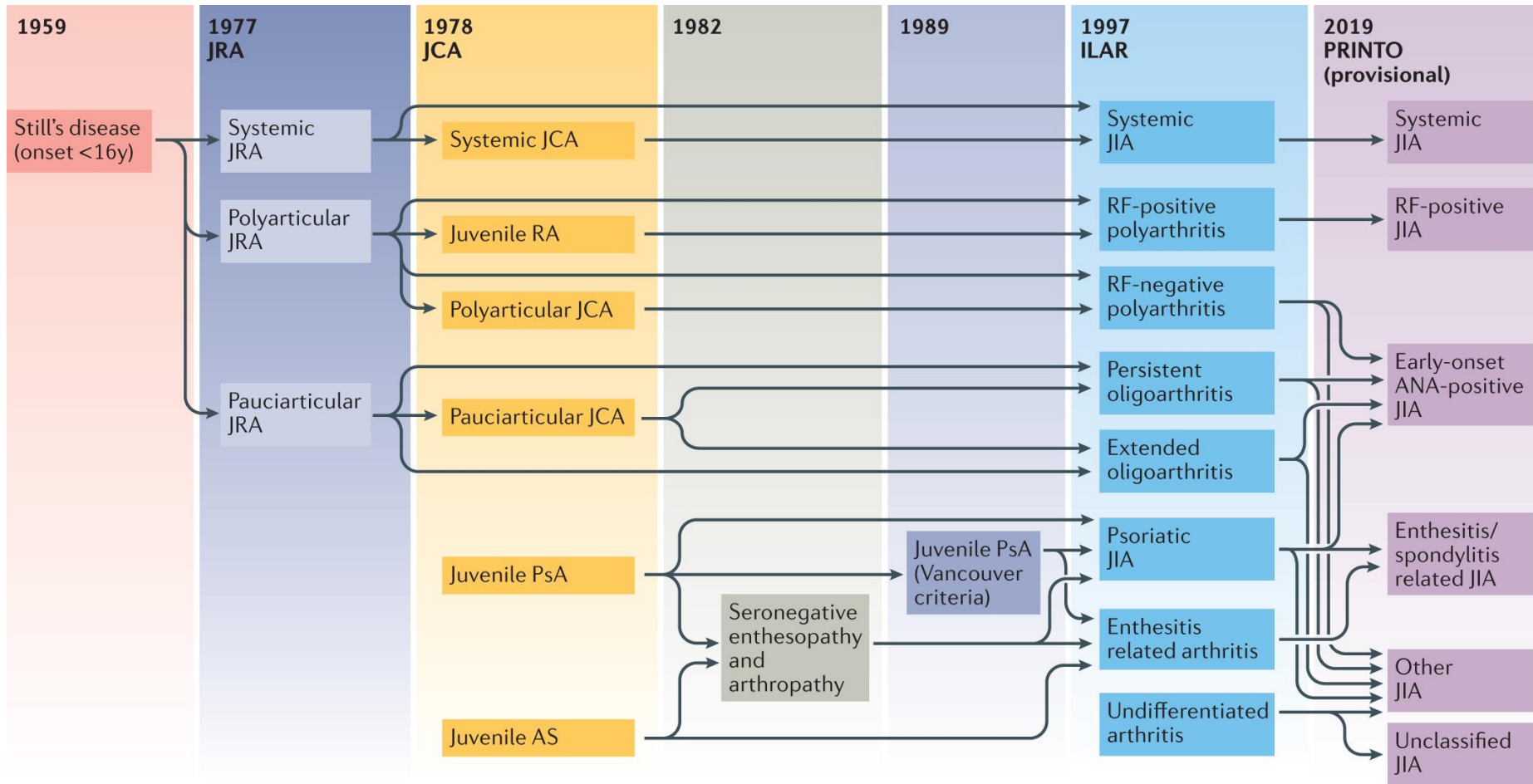


Fig. 3: Current arthritis classification in children and adults.

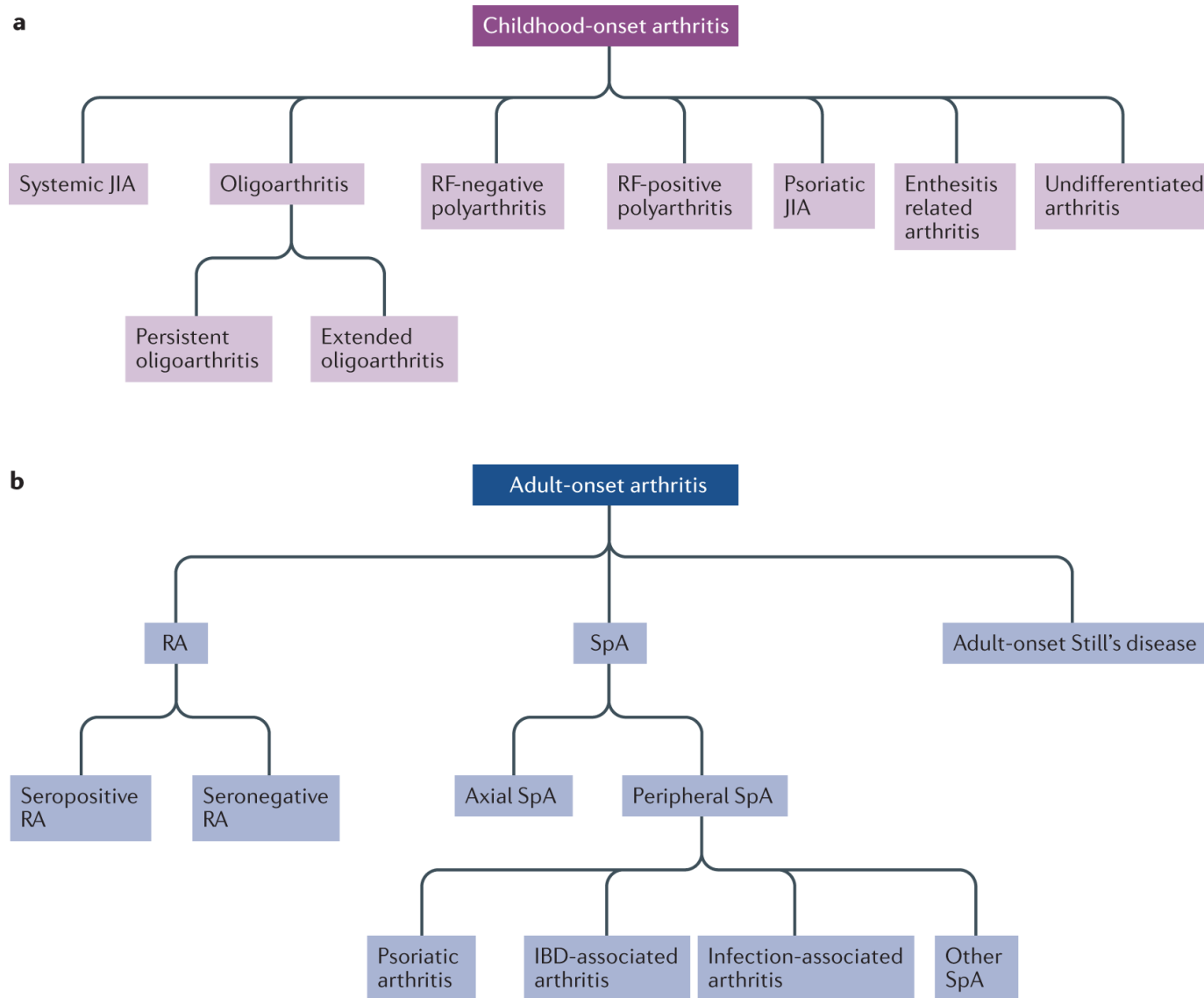
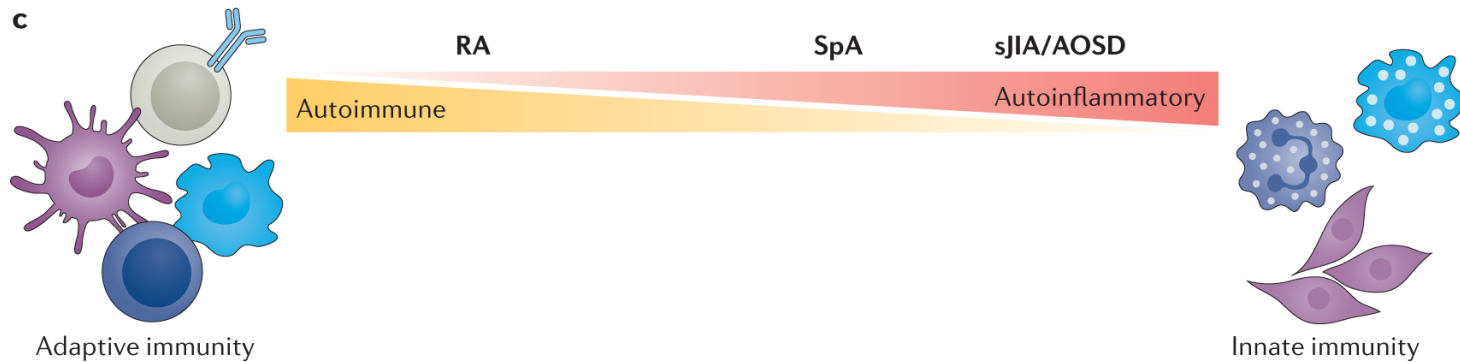
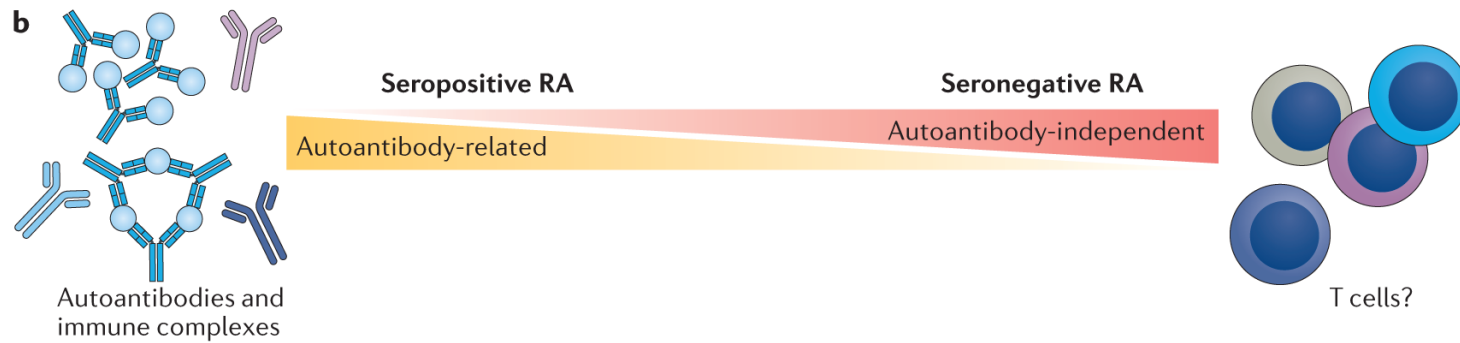
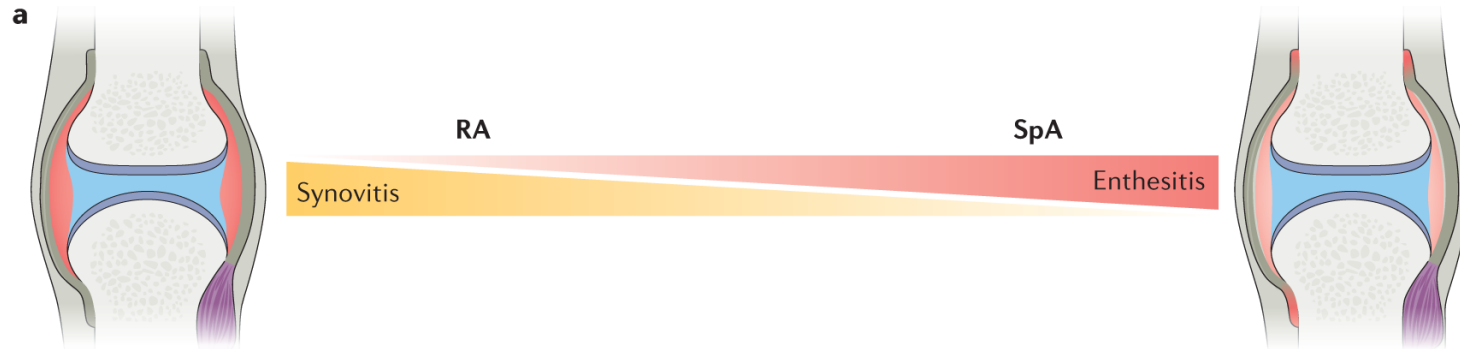
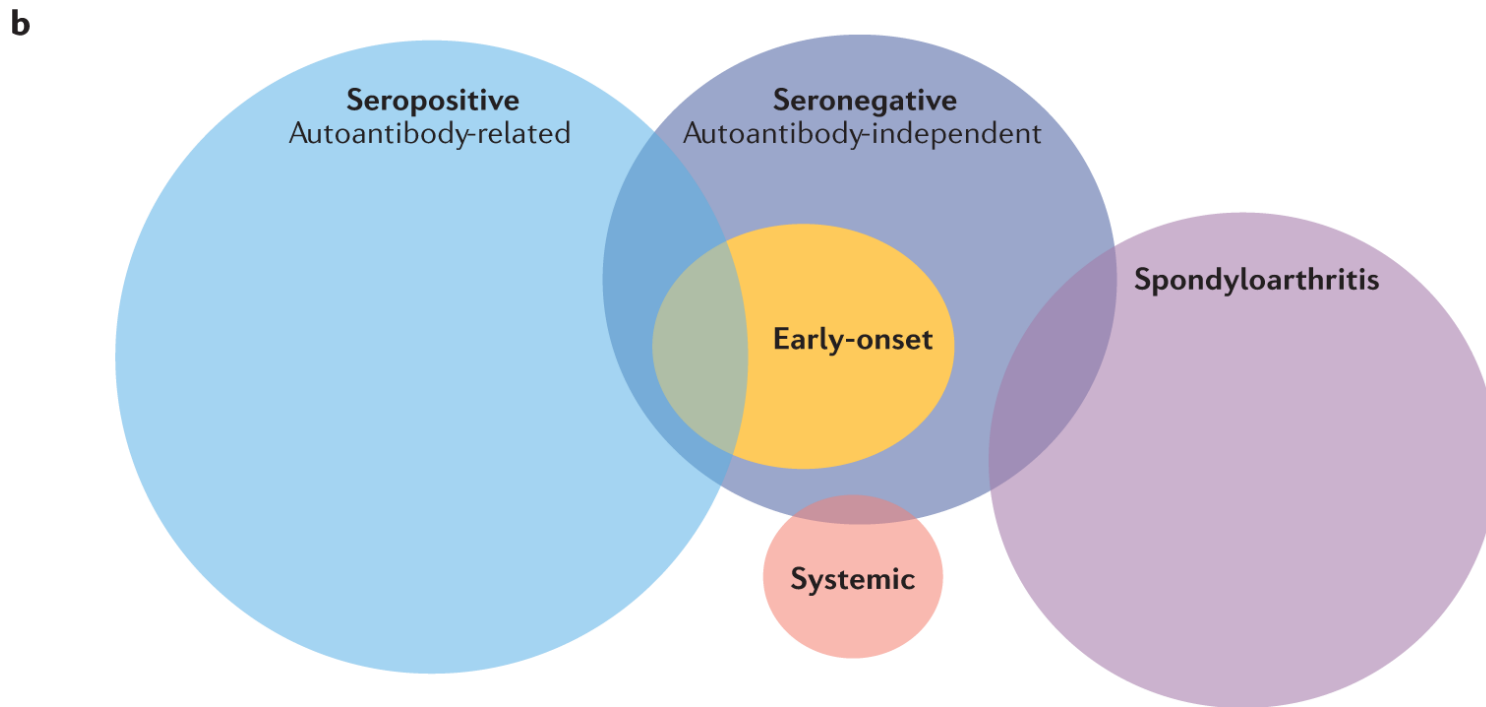
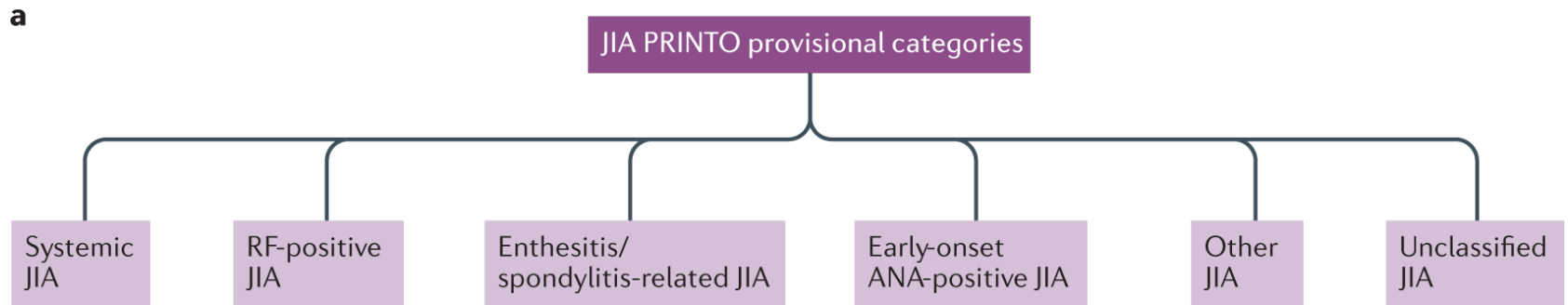


Fig. 4: Biological fault lines in arthritis.



Nigrovic, P.A. et al. Biological classification of childhood arthritis: roadmap to a molecular nomenclature. *Nat. Rev. Rheumatol.* <https://doi.org/10.1038/s41584-021-00590-6> (2021).

Fig. 5: Proposed subdivisions within arthritis: PRINTO and the four-cluster model.



Part **b** adapted with permission from Nigrovic et al.¹⁸, Wiley. Copyright © 2017, American College of Rheumatology.

Nigrovic, P.A. et al. Biological classification of childhood arthritis: roadmap to a molecular nomenclature. *Nat. Rev. Rheumatol.* <https://doi.org/10.1038/s41584-021-00590-6> (2021).