

Supplement to: Effects of dapagliflozin on major adverse kidney and cardiovascular events in patients with diabetic and non-diabetic chronic kidney disease: a pre-specified analysis from the DAPA-CKD trial

Supplementary Table 1: Baseline characteristics stratified by kidney disease diagnosis

Characteristic	Diabetic Nephropathy		Hypertensive CKD		Glomerulonephritis		Other / Unknown	
	Dapagliflozin (n=1271)	Placebo (n=1239)	Dapagliflozin (n=324)	Placebo (n=363)	Dapagliflozin (n=343)	Placebo (n=352)	Dapagliflozin (n=214)	Placebo (n=198)
Age (years), mean (SD)	64.2 (9.7)	65.0 (9.4)	64.2 (12.1)	63.1 (11.9)	51.9 (13.6)	51.7 (13.9)	59.6 (13.5)	58.4 (13.7)
Female sex, n (%)	435 (34.2)	409 (33.0)	87 (26.9)	100 (27.5)	117 (34.1)	137 (38.9)	70 (32.7)	70 (35.4)
Race – n (%)								
White	657 (51.7)	676 (54.6)	177 (54.6)	198 (54.5)	165 (48.1)	176 (50.0)	125 (58.4)	116 (58.6)
Black or African American	66 (5.2)	49 (4.0)	25 (7.7)	29 (8.0)	6 (1.7)	3 (0.9)	7 (3.3)	6 (3.0)
Asian	409 (32.2)	373 (30.1)	104 (32.1)	109 (30.0)	162 (47.2)	164 (46.6)	74 (34.6)	72 (36.4)
Other	139 (10.9)	141 (11.4)	18 (5.6)	27 (7.4)	10 (2.9)	9 (2.6)	8 (3.7)	4 (2.0)
Weight (kg), mean (SD)	82.9 (20.8)	83.4 (21.1)	82.7 (18.8)	83.5 (21.2)	77.2 (18.3)	77.2 (20.1)	78.1 (19.8)	79.6 (19.3)
Current Smoker, n (%)	160 (12.6)	170 (13.7)	54 (16.7)	53 (14.6)	39 (11.4)	49 (13.9)	30 (14.0)	29 (14.6)
Blood Pressure – (mmHg), mean (SD)								
Systolic	139.1 (17.5)	139.8 (17.1)	137.9 (16.7)	139.5 (17.7)	128.8 (15.9)	128.6 (14.8)	133.9 (17.0)	134.6 (16.6)
Diastolic	76.4 (10.3)	76.2 (9.7)	79.6 (10.9)	79.5 (11.5)	79.0 (11.4)	78.2 (10.1)	78.6 (10.2)	80.7 (10.2)
Estimate GFR (mL/min/1.73 m ²), mean (SD)	44.2 (12.7)	43.5 (12.4)	42.0 (11.2)	42.0 (12.6)	42.9 (11.9)	42.8 (11.9)	40.2 (11.4)	41.7 (12.7)
eGFR ≥60, n (%)	165 (13.0)	137 (11.1)	22 (6.8)	30 (8.3)	35 (10.2)	31 (8.8)	12 (5.6)	22 (11.1)
eGFR 45 to <60, n (%)	384 (30.2)	406 (32.8)	99 (30.6)	104 (28.7)	106 (30.9)	117 (33.2)	57 (26.6)	55 (27.8)
eGFR 30 to <45, n (%)	560 (44.1)	520 (42.0)	156 (48.1)	166 (45.7)	158 (46.1)	151 (42.9)	105 (49.1)	82 (41.4)
eGFR <30, n (%)	162 (12.7)	176 (14.2)	47 (14.5)	63 (17.4)	44 (12.8)	53 (15.1)	40 (18.7)	39 (19.7)
Haemoglobin (g/L), mean (SD)	125.4 (17.4)	124.4 (17.7)	134.0 (18.3)	133.4 (18.0)	132.4 (17.8)	131.9 (16.3)	133.6 (18.4)	132.7 (18.2)
Serum potassium (mmol/L), mean (SD)	4.7 (0.6)	4.7 (0.6)	4.6 (0.5)	4.5 (0.5)	4.6 (0.5)	4.6 (0.5)	4.6 (0.5)	4.6 (0.6)
UACR (mg/g), median (IQR)	1056.0 (473.0–2225.2)	1037.5 (495.8–2072.0)	801.0 (400.1–1444.8)	711.0 (414.2–1337.0)	975.0 (551.0–1700.2)	981.2 (533.6–1886.9)	794.5 (421.4–1490.2)	841.0 (478.8–1467.4)
UACR >1000 mg/g, n (%)	659 (51.8)	641 (51.7)	134 (41.4)	131 (36.1)	166 (48.4)	173 (49.1)	89 (41.6)	86 (43.4)
Type 2 diabetes, n (%)	1271 (100.0)	1239 (100.0)	86 (26.5)	114 (31.4)	47 (13.7)	50 (14.2)	51 (23.8)	48 (24.2)
Heart failure, n (%)	159 (12.5)	160 (12.9)	39 (12.0)	31 (8.5)	14 (4.1)	10 (2.8)	23 (10.7)	32 (16.2)
Prior medication, n (%)								
ACE inhibitor	397 (31.2)	383 (30.9)	83 (25.6)	106 (29.2)	113 (32.9)	112 (31.8)	80 (37.4)	80 (40.4)
ARB	857 (67.4)	821 (66.3)	234 (72.2)	253 (69.7)	226 (65.9)	240 (68.2)	127 (59.3)	112 (56.6)
Diuretic	638 (50.2)	647 (52.2)	140 (43.2)	151 (41.6)	80 (23.3)	84 (23.9)	70 (32.7)	72 (36.4)
Statin	912 (71.8)	883 (71.3)	197 (60.8)	239 (65.8)	166 (48.4)	175 (49.7)	120 (56.1)	102 (51.5)

ACE, angiotensin converting enzyme; ARB, angiotensin receptor blocker; eGFR, estimated glomerular filtration rate; IQR, inter quartile range; UACR, urinary albumin to creatinine ratio

Supplementary Table 2: Adverse events by kidney disease diagnosis at baseline

Outcome, n (%)	Dapagliflozin (n=2149)	Placebo (n=2149)	Odds ratio (95% CI)	P-value interaction
Diabetic Nephropathy	1269	1239		
Hypertensive CKD	324	362		
Glomerulonephritis	343	351		
Other / Unknown	213	197		
Discontinuation due to adverse event				
Diabetic Nephropathy	71 (5.6)	82 (6.6)	0.84 (0.60, 1.16)	0.0352
Hypertensive CKD	17 (5.2)	18 (5.0)	1.06 (0.53, 2.10)	
Glomerulonephritis	16 (4.7)	20 (5.7)	0.81 (0.41, 1.59)	
Other / Unknown	14 (6.6)	3 (1.5)	4.55 (1.46, 19.96)	
Any serious adverse event^a				
Diabetic Nephropathy	427 (33.6)	492 (39.7)	0.77 (0.65, 0.91)	0.1363
Hypertensive CKD	94 (29.0)	108 (29.8)	0.96 (0.69, 1.34)	
Glomerulonephritis	64 (18.7)	91 (25.9)	0.66 (0.46, 0.94)	
Other / Unknown	48 (22.5)	38 (19.3)	1.22 (0.76, 1.97)	

^aIncludes death

Supplementary Table 3: Discontinuation due to adverse events, and serious adverse events of urinary tract infections and genital infections by diabetes status (safety analysis set)

	Type 2 diabetes		Without diabetes	
	Dapagliflozin n=1453	Placebo n=1450	Dapagliflozin n=696	Placebo n=699
Discontinuation due to any AE of urinary tract infection, n (%)	7 (0.5)	3 (0.2)	1 (0.1)	0
Urinary tract infection	6 (0.4)	3 (0.2)	1 (0.1)	0
Urogenital infection bacterial	1 (0.1)	0	0	0
Discontinuation due to any AE of genital infection	3 (0.2)	0	0	0
Vulvovaginal mycotic infection	2 (0.1)	0	0	0
Urogenital infection bacterial	1 (0.1)	0	0	0
Any SAE of urinary tract infection, n (%)	23 (1.6)	14 (1.0)	6 (0.9)	4 (0.6)
Urinary tract infection	17 (1.2)	10 (0.7)	3 (0.4)	3 (0.4)
Pyelonephritis acute	2 (0.1)	1 (0.1)	3 (0.4)	0
Cystitis	1 (0.1)	2 (0.1)	0	0
Escherichia urinary tract infection	1 (0.1)	0	0	0
Pyonephrosis	1 (0.1)	0	0	0
Urinary tract infection bacterial	1 (0.1)	0	0	0
Urogenital infection bacterial	1 (0.1)	0	0	0
Pyelonephritis	0	1 (0.1)	1 (0.1)	1 (0.1)
Any SAE of genital infection, n (%)	3 (0.2)	0	0	0
Balanoposthitis	1 (0.1)	0	0	0
Urogenital infection bacterial	1 (0.1)	0	0	0
Vulval cellulitis	1 (0.1)	0	0	0

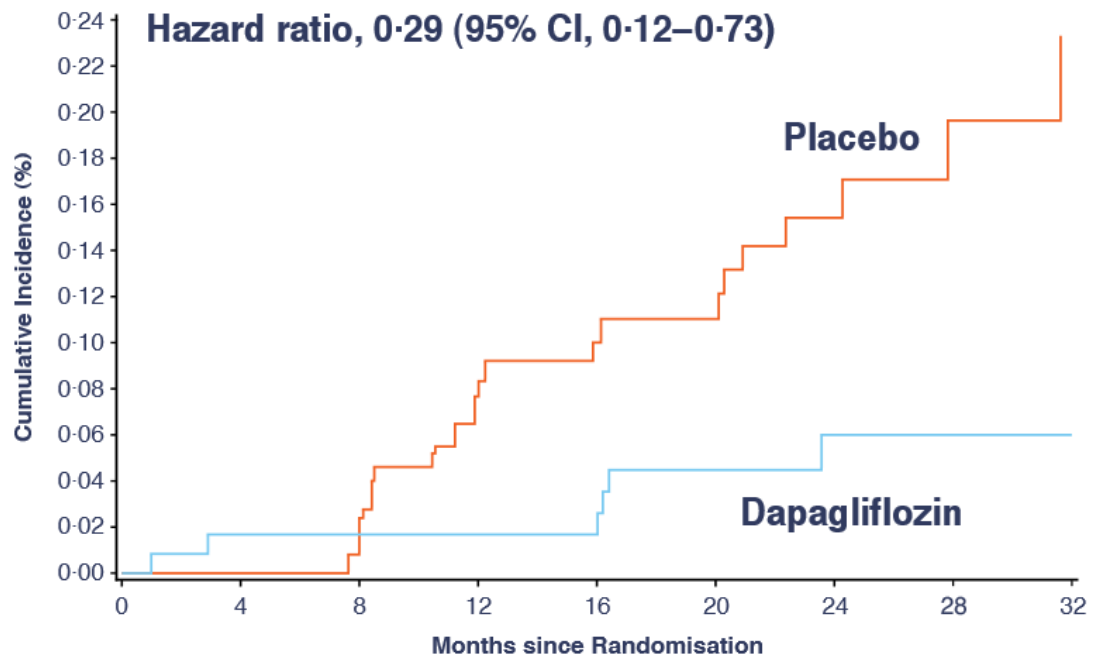
Based on pre-defined list of preferred terms.

Participants with multiple events in the same preferred term are counted only once in that preferred term. Participants with events in more than 1 preferred term are counted once in each of those preferred terms.

*Includes death

AE, adverse event; SAE, serious adverse event

Supplementary Figure 1: Kaplan Meier for the primary outcome in patients with IgA nephropathy



No. at Risk									
Dapagliflozin	137	107	106	105	104	98	61	43	17
Placebo	133	113	108	101	96	92	51	32	19

CI, confidence interval; No., number.