



Clinical profile and contemporary management of patients with heart failure with preserved ejection fraction: results from the CHECK-HF registry

A. Uijl · J. F. Veenis · H. P. Brunner-La Rocca · V. van Empel · G. C. M. Linssen · F. W. Asselbergs · C. van der Lee · L. W. M. Eurlings · H. Kragten · N. Y. Y. Al-Windy · A. van der Spank · S. Koudstaal · J. J. Brugts · A. W. Hoes

Accepted: 16 December 2020

© The Author(s) 2021

Abstract

Background Clinical management of heart failure with preserved ejection fraction (HFpEF) centres on treating comorbidities and is likely to vary between countries. Thus, to provide insight into the current management of HFpEF, studies from multiple countries are required. We evaluated the clinical profiles and current management of patients with HFpEF in the Netherlands.

Methods We included 2153 patients with HFpEF (defined as a left ventricular ejection fraction $\geq 50\%$) from the CHECK-HF registry, which included patients from 2013 to 2016.

Results Median age was 77 (IQR 15) years, 55% were women and the most frequent comorbidities were hy-

pertension (51%), renal insufficiency (45%) and atrial fibrillation (AF, 38%). Patients between 65 and 80 years and those over 80 years had on average more comorbidities (up to 64% and 74%, respectively, with two or more comorbidities) than patients younger than 65 years (38% with two or more comorbidities, p -value < 0.001). Although no specific drugs are available for HFpEF, treating comorbidities is advised. Beta-blockers were most frequently prescribed (78%), followed by loop diuretics (74%), renin-angiotensin system (RAS) inhibitors (67%) and mineralocorticoid receptor antagonists (MRAs, 39%). Strongest predictors for loop-diuretic use were older age, higher New York Heart Association class and AF.

Department of Cardiology, Hospital Group Twente, Almelo and Hengelo, Almelo, The Netherlands

F. W. Asselbergs · S. Koudstaal
Department of Cardiology, Division Heart and Lungs, University Medical Centre Utrecht, Utrecht University, Utrecht, The Netherlands

F. W. Asselbergs
Institute of Cardiovascular Science and Institute of Health Informatics, Faculty of Population Health Sciences, University College London, London, UK

C. van der Lee
Streekziekenhuis Koningin Beatrix, Winterswijk, The Netherlands

L. W. M. Eurlings
VieCuri Medisch Centrum, Venlo, The Netherlands

H. Kragten
Zuyderland Medisch Centrum, Heerlen, The Netherlands

N. Y. Y. Al-Windy
Gelre Ziekenhuizen, Zutphen, The Netherlands

A. van der Spank
Flevoziekenhuis, Almere, The Netherlands

A. Uijl and J.F. Veenis share first authorship and contributed equally

Supplementary Information The online version of this article (<https://doi.org/10.1007/s12471-020-01534-7>) contains supplementary material, which is available to authorized users.

A. Uijl · A. W. Hoes
Julius Centre for Health Sciences and Primary Care, University Medical Centre Utrecht, Utrecht University, Utrecht, The Netherlands

A. Uijl · S. Koudstaal
Division of Cardiology, Department of Medicine, Karolinska Institutet, Stockholm, Sweden

J. F. Veenis (✉) · J. J. Brugts
Department of Cardiology, Erasmus MC, University Medical Centre Rotterdam, Thoraxcenter, Rotterdam, Rotterdam, The Netherlands
j.veen@erasmusmc.nl

H. P. Brunner-La Rocca · V. van Empel
Heart and Vascular Centre, Maastricht University Medical Centre, Maastricht, The Netherlands



What's new?

- This study provides insight into the medical management of patients with heart failure with preserved ejection fraction (HFpEF) in the Netherlands.
- Additionally, this study demonstrates that the prescription of beta-blockers, renin-angiotensin system inhibitors and mineralocorticoid receptor antagonists in HFpEF patients is primarily determined by age, sex, New York Heart Association (NYHA) class and underlying comorbidities.
- The newly gained insight into the effects of age, sex, NYHA class and comorbidities might aid heart failure specialists in optimising the management of HFpEF.

Conclusion The medical HFpEF profile is determined by the underlying comorbidities, sex and age. Comorbidities are highly prevalent in HFpEF patients, especially in elderly HFpEF patients. Despite the lack of evidence, many HFpEF patients receive regular beta-blockers, RAS inhibitors and MRAs, often for the treatment of comorbidities.

Keywords Heart failure with preserved ejection fraction · HFpEF · Comorbidities · Treatment

Introduction

A large proportion of all heart failure (HF) patients are diagnosed with HF with preserved ejection fraction (HFpEF), with a further increase expected [1–3]. The literature reports an estimated proportion of HFpEF among HF patients of up to 50%, but that percentage is likely to be an underestimation, as many HFpEF patients go unrecognised, especially in primary care [1]. HFpEF is associated with substantial morbidity and mortality, comparable to HF with reduced ejection fraction (HFrEF) [4], with an estimated 1-year survival after the diagnosis of 78% [5]. HFpEF patients more often have more comorbidities and are older than HFrEF patients [6–8]. So far, there are no evidence-based treatment options for HFpEF patients. Recently, sacubitril-valsartan was not found to have better primary clinical outcomes than valsartan in the treatment of HFpEF [9], despite a large subset of hypertensive patients and a significant blood-pressure-lowering effect. Furthermore, the Swedish Heart Failure registry demonstrated the prognostic impact of non-cardiac comorbidities [6], and European Society of Cardiology (ESC) guidelines currently recommend that only co-existing comorbidities be treated in HFpEF patients [4].

Despite the lack of specific treatment recommendations, many HFpEF patients receive HFrEF medication [10]. However, whether the patient's clinical

profile, such as age and sex, as well as the presence of comorbidities influences the medical management of HFpEF patients remains unclear. With the current analysis of 2153 HFpEF patients in the Dutch registry CHECK-HF (*Chronisch Hartfalen ESC-richtlijn Cardiologische praktijk Kwaliteitsproject-Hartfalen*), we aimed to investigate whether the clinical profile and comorbidities influence the contemporary management of HFpEF patients.

Methods*Study population*

The CHECK-HF is a cross-sectional registry consisting of unselected patients from 34 Dutch hospitals with the diagnosis of chronic HF, according to ESC-guideline definitions, treated at Dutch dedicated outpatient HF clinics (96%) in the period September 2013 to September 2016. The registry comprises 10,910 patients with chronic HF [11, 12] and includes detailed data on baseline characteristics, electrocardiography, echocardiography and laboratory assessments. Details of the design of the registry were published previously [11].

Patients were included if they were 18 years or older and had a diagnosis of HF based on the 2012 ESC guidelines: i.e. structural and/or functional cardiac abnormalities, signs and symptoms of HF [13]. Baseline ejection fraction was assessed by echocardiography. HFpEF was classified as a left ventricular ejection fraction (LVEF) of $\geq 50\%$ with no previously known reduced LVEF. In total, 2267 (21.3%) patients in the registry were classified as HFpEF patients. HFpEF patients in whom no data on drug treatment had been recorded ($n=114$) were excluded. Therefore, a total of 2153 HFpEF patients were included in this analysis.

This study was conducted in accordance with the Helsinki declaration and was approved by the Medical Ethics Committee 2017 at Maastricht University Medical Centre (Maastricht, the Netherlands).

Baseline measurements

Baseline variables used in the analyses are described in detail in the design article [11]. For the analysis of comorbidities, we focused on atrial fibrillation (AF), diabetes mellitus (DM), hypertension, hypercholesterolaemia, renal insufficiency (estimated glomerular filtration rate (eGFR) <60 ml/min or a documented history of renal insufficiency), thyroid dysfunction, peripheral artery disease (PAD), iron deficiency and chronic obstructive pulmonary disease (COPD). AF was defined as a documented history of AF or AF diagnosed by 12-lead electrocardiogram, performed during the most recent outpatient clinic visit.

Table 1 Baseline patient characteristics, stratified by age and sex

	Men				Women			p-value
	Overall	<65 years	65–80 years	>80 years	<65 years	65–80 years	>80 years	
Number	2153	204	452	321	144	453	571	
Age (years), median (IQR)	77 (69–84)	58 (53–61)	72 (69–77)	84 (82–87)	58 (52–62)	74 (70–77)	85 (82–88)	<0.001
History of coronary artery disease	513 (24.6)	67 (33.2)	171 (38.6)	83 (26.7)	29 (20.9)	84 (19.1)	79 (14.3)	<0.001
History of cancer	242 (14.1)	10 (5.7)	59 (16.0)	54 (21.1)	17 (13.7)	48 (13.2)	54 (12.4)	<0.001
History of valvular disease	207 (15.6)	9 (9.8)	45 (16.1)	32 (13.3)	14 (19.4)	55 (20.7)	52 (13.8)	0.067
<i>Heart failure measures (%)</i>								
Ischaemic aetiology HF	612 (29.3)	72 (35.6)	199 (44.9)	108 (34.7)	35 (25.2)	99 (22.5)	99 (17.9)	<0.001
<i>NYHA class</i>								
NYHA I	418 (19.8)	75 (37.9)	122 (27.3)	36 (11.4)	49 (34.3)	75 (16.7)	61 (10.9)	<0.001
NYHA II	1038 (49.1)	91 (46.0)	224 (50.1)	173 (54.6)	63 (44.1)	224 (50.0)	263 (47.0)	
NYHA III	612 (29.0)	30 (15.2)	93 (20.8)	98 (30.9)	31 (21.7)	145 (32.4)	215 (38.4)	
NYHA IV	45 (2.1)	2 (1.0)	8 (1.8)	10 (3.2)	0 (0.0)	4 (0.9)	21 (3.8)	
NTproBNP (pmol), median (IQR)	116.8 (40.5–291.5)	30.6 (14.0–178.4)	128.0 (48.4–255.3)	167.0 (55.8–455.8)	77.6 (35.3–389.3)	92.0 (31.4–196.9)	135.1 (42.4–382.1)	<0.001
<i>Clinical measurements</i>								
BMI (kg/m ²)	28.4 ± 5.9	29.3 ± 6.4	29.0 ± 5.5	26.8 ± 4.5	29.5 ± 7.6	30.0 ± 6.5	27.3 ± 5.3	<0.001
Pulse pressure	62.1 ± 19.2	58.3 ± 14.7	62.7 ± 18.8	60.7 ± 18.3	58.1 ± 18.7	63.7 ± 19.9	63.7 ± 20.7	<0.001
DBP (mm Hg)	72.7 ± 12.2	78.9 ± 13.2	73.8 ± 11.1	69.2 ± 11.4	76.7 ± 11.5	72.9 ± 12.4	70.4 ± 12.0	<0.001
SBP (mm Hg)	134.8 ± 22.9	137.2 ± 22.2	136.5 ± 22.3	129.9 ± 21.8	134.8 ± 21.6	136.5 ± 23.5	134.2 ± 23.5	<0.001
eGFR	61.3 ± 25.3	75.5 ± 21.2	57.7 ± 23.5	49.0 ± 24.7	68.4 ± 21.2	54.6 ± 21.5	45.2 ± 19.4	<0.001
Oedema (%)	292 (17.9)	23 (13.5)	58 (16.5)	53 (22.0)	19 (15.6)	54 (15.7)	85 (21.0)	0.086
Devices (%)	346 (16.1)	31 (15.2)	66 (14.6)	55 (17.1)	17 (11.8)	74 (16.3)	103 (18.0)	0.454
<i>Comorbidities (%)</i>								
Hypertension	1085 (50.6)	90 (44.1)	214 (47.3)	153 (47.7)	66 (45.8)	240 (53.0)	322 (56.4)	0.006
Diabetes	642 (29.9)	45 (22.1)	159 (35.2)	69 (21.5)	32 (22.2)	183 (40.4)	154 (27.0)	<0.001
COPD	109 (19.1)	22 (10.8)	101 (22.3)	79 (24.6)	27 (18.8)	87 (19.2)	93 (16.3)	0.001
Hypercholesterolaemia	236 (11.0)	28 (13.7)	49 (10.8)	32 (10.0)	17 (11.8)	64 (14.1)	46 (8.1)	0.041
Renal insufficiency ^a	972 (45.3)	22 (10.8)	164 (36.3)	198 (61.7)	29 (20.1)	203 (44.8)	356 (62.3)	<0.001
Atrial fibrillation	817 (38.4)	33 (16.3)	175 (38.9)	152 (47.5)	17 (12.1)	162 (35.9)	278 (49.2)	<0.001
Thyroid dysfunction	167 (8.4)	7 (3.7)	18 (4.2)	15 (5.0)	16 (11.9)	51 (12.1)	60 (11.5)	<0.001
Peripheral artery disease	71 (3.6)	4 (2.1)	16 (3.8)	13 (4.3)	3 (2.2)	19 (4.5)	16 (3.1)	0.568
Iron deficiency	11 (0.6)	0 (0.0)	2 (0.5)	1 (0.3)	0 (0.0)	5 (1.2)	3 (0.6)	0.392
Number of comorbidities (median (IQR))	2 (1–3)	1 (0–2)	2 (1–3)	2 (1–3)	1 (0–2)	2 (1–3)	2 (2–3)	<0.001

IQR interquartile range, HF heart failure, NYHA New York Heart Association, NTproBNP N-terminal pro-B-type natriuretic peptide, BMI body mass index, DBP diastolic blood pressure, SBP systolic blood pressure, eGFR estimated glomerular filtration rate, COPD chronic obstructive pulmonary disease

^aDefined as an eGFR < 60 ml/min or a documented history of renal insufficiency

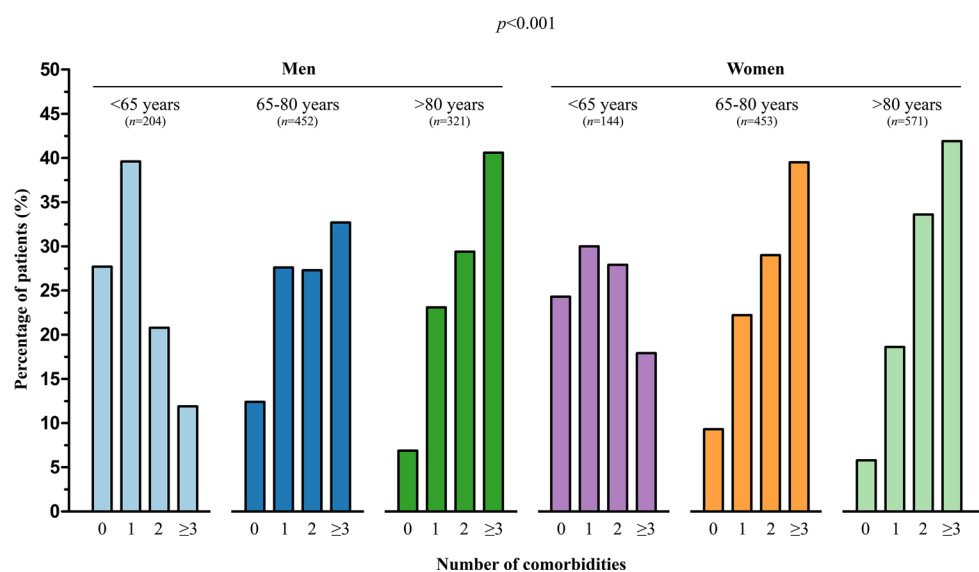
Statistical analyses

Baseline continuous variables are presented as mean ± standard deviation or median with interquartile range (IQR) where appropriate; categorical data are presented as numbers and percentages. A chi-square test was used to compare data for categorical variables and a *t*-test or Mann-Whitney U test for continuous data. Additionally, baseline characteristics were analysed in age and sex strata (men <65 years, men 65–80 years, men >80 years, women <65 years, women 65–80 years, and women >80 years). We investigated the distribution for the number of comorbidities, which was categorised into no comorbidities,

one, two, or three or more comorbidities, stratified by age and sex (men <65 years, men 65–80 years, men >80 years, women <65 years, women 65–80 years, and women >80 years).

Missing data in the baseline measurements (Electronic Supplementary Material, Table S1) were imputed, using multiple imputation, from the mice algorithm in the statistical software package R. Analyses were performed on the ten imputed datasets separately and results were pooled using Rubin's rules. Multivariable predictors of use of loop diuretics, beta-blockers, renin-angiotensin system (RAS) inhibitors and mineralocorticoid receptor antagonists (MRAs) were assessed using multivariable logistic regression

Fig. 1 Percentage of patients per number of comorbidities, stratified by age and sex (men <65 years, men 65–80 years, men >80 years, women <65 years, women 65–80 years and women >80 years)



analysis. All predictors of medication use in univariate analysis (data not shown) at a p -value of <0.1 were included, using the enter method, in the multivariable regression analysis. Results are presented as odds ratio and 95% confidence interval. Analyses were performed using SPSS Statistical Package version 25.0 (SPSS Inc., IBM, Armonk, NY, USA) and R version 3.2.3.

Results

Baseline characteristics

Baseline characteristics are shown in Tab. 1. Overall, the median age of the HFpEF patients was 77 years (IQR 69–84 years), 54.5% were women and 24.6% had a history of coronary artery disease. Comorbidities were frequently present at baseline, patients had a median of 2 (IQR 1–3) comorbidities, and only 11.4% had no comorbidities. Renal insufficiency (45.3%), hypertension (50.7) and AF (38.4%) occurred most frequently.

Distribution of comorbidities

Fig. 1 shows the distribution for the number of comorbidities ranging from 0 to 3 or more, stratified by age and sex. The younger patients aged <65 years, both men and women, mainly had 0 or 1 comorbidity, whereas older patients more often had 2 or more comorbidities. Women had 3 or more comorbidities more often than men ($p=0.001$).

Medical profile of HFpEF patients

The pharmacological therapy in HFpEF patients is shown in Tab. 2 and is stratified according to age categories, sex, and the presence of hypertension, AF and DM. Loop diuretics were the most frequently

prescribed type of HF medication (79.4%), followed by beta-blockers (78.4%), RAS inhibitors (67.3%) and MRAs (38.5%). MRAs, diuretics, digoxin and oral anticoagulants (OACs) were used most often in the oldest age category ($p < 0.001$ for all trends). Diuretics ($p < 0.001$), digoxin ($p=0.002$) and OACs ($p < 0.001$) were used more often in women than in men. HFpEF patients with hypertension received RAS inhibitors ($p < 0.001$) and diuretics ($p=0.016$) more often than patients without hypertension. MRAs ($p < 0.001$), diuretics ($p < 0.001$), digoxin ($p < 0.001$), amiodarone ($p=0.010$), OACs ($p < 0.001$) and non-vitamin K OACs ($p < 0.001$) were prescribed more often to HFpEF patients with AF. Diuretics and statins were prescribed more often to HFpEF patients with DM ($p < 0.001$, for both). MRAs ($p=0.005$), diuretics ($p < 0.001$) and OACs ($p=0.001$) were prescribed more often in patients with clinical signs of congestion, while RAS inhibitors were prescribed less often in these patients.

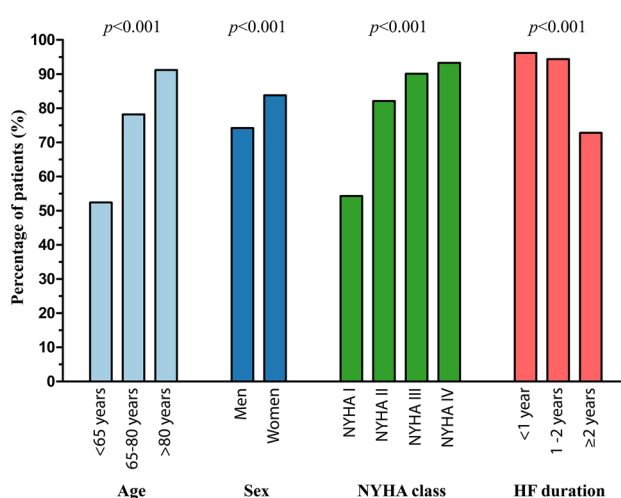


Fig. 2 Diuretic profile of patients with heart failure (HF) with preserved ejection fraction. NYHA New York Heart Association

Table 2 Profile of medication received by patients with heart failure with preserved ejection fraction

	Diuretics	RAS inhibitor	Beta-blocker	MRA	Digoxin	Amiodarone	OAC	NOAC	Statin
Overall population	1710 (79.4)	1450 (67.3)	1685 (78.3)	828 (38.5)	388 (18.0)	98 (12.8)	1104 (59.2)	79 (4.2)	1754 (81.5)
Subgroups									
<i>Age</i>									
< 65 years	183 (52.4)	240 (68.8)	273 (78.2)	100 (28.7)	40 (11.5)	8 (11.3)	99 (39.3)	9 (3.6)	314 (90.0)
65–80 years	709 (78.2)	653 (72.0)	720 (79.4)	329 (36.3)	164 (18.1)	51 (17.8)	459 (57.2)	34 (4.2)	786 (86.7)
> 80 years	816 (91.2)	555 (62.0)	691 (77.2)	399 (44.6)	183 (20.4)	39 (9.6)	545 (67.5)	36 (4.5)	653 (73.0)
<i>p</i> -value	<0.001	<0.001	0.534	<0.001	0.001	0.006	<0.001	0.831	<0.001
<i>Sex</i>									
Men	725 (74.2)	658 (67.3)	767 (78.5)	353 (36.1)	148 (15.1)	36 (11.9)	463 (54.4)	32 (3.8)	829 (84.9)
Women	980 (83.8)	787 (67.3)	915 (78.2)	471 (40.3)	239 (20.4)	61 (13.3)	636 (63.2)	47 (4.7)	920 (78.6)
<i>p</i> -value	<0.001	0.967	0.866	0.050	0.002	0.568	<0.001	0.334	<0.001
<i>Hypertension</i>									
With HT	890 (81.5)	781 (71.5)	870 (79.7)	406 (37.2)	189 (17.3)	54 (12.7)	580 (61.4)	35 (3.7)	881 (80.7)
Without HT	820 (77.3)	669 (63.1)	815 (76.8)	422 (39.8)	199 (18.8)	44 (13.0)	524 (57.0)	44 (4.8)	873 (82.3)
<i>p</i> -value	0.016	<0.001	0.108	0.216	0.382	0.901	0.056	0.245	0.338
<i>Atrial fibrillation</i>									
With AF	767 (93.3)	543 (66.1)	662 (80.5)	410 (49.9)	293 (35.6)	31 (9.1)	678 (86.3)	51 (6.5)	623 (75.8)
Without AF	931 (70.9)	899 (68.4)	1,010 (76.9)	410 (31.2)	90 (6.8)	64 (15.3)	415 (39.1)	28 (2.6)	1120 (85.2)
<i>p</i> -value	<0.001	0.257	0.045	<0.001	<0.001	0.010	<0.001	<0.001	<0.001
<i>Diabetes mellitus</i>									
With DM	567 (87.9)	445 (69.0)	509 (78.9)	267 (41.4)	123 (19.1)	27 (11.1)	342 (60.6)	18 (3.2)	560 (86.8)
Without DM	1143 (75.8)	1005 (66.6)	1176 (78.0)	561 (37.2)	265 (17.6)	71 (13.6)	762 (55.7)	61 (4.7)	1194 (79.2)
<i>p</i> -value	<0.001	0.287	0.632	0.067	0.408	0.323	0.488	0.134	<0.001
<i>Congestion^a</i>									
With congestion	257 (88.0)	173 (59.2)	226 (77.4)	113 (38.7)	53 (18.2)	16 (12.1)	172 (64.4)	7 (2.6)	231 (79.1)
Without congestion	9689 (72.0)	937 (69.7)	1042 (77.5)	406 (30.2)	217 (16.1)	71 (12.7)	632 (52.9)	54 (4.5)	1059 (78.7)
<i>p</i> -value	<0.001	0.001	0.978	0.005	0.400	0.851	0.001	0.161	0.887

RAS renin-angiotensin system, MRA mineralocorticoid receptor antagonist, OAC oral anticoagulant, NOAC non-vitamin K OAC, HT hypertension, AF atrial fibrillation, DM diabetes mellitus

^aIndicated by either peripheral oedema or other signs of a hypervolaemic status

The distribution of all diuretic use, stratified according to age categories, sex, New York Heart Association (NYHA) class and HF duration is shown in Fig. 2. Diuretics were prescribed more often in older patients, women, patients in a higher NYHA class, and in patients who had been more recently diagnosed with HF ($p < 0.001$).

Determinants of drug therapy

Independent predictors of the use of loop diuretics, RAS inhibitors, beta-blockers and MRAs are shown in the Electronic Supplementary Material (Figs. S1–S4). Older age, higher NYHA class, higher body mass index (BMI), valvular disease, AF, COPD, DM and concomitant treatment with MRAs and digoxin were all positively associated with loop-diuretic use (Fig. S1) with only higher mean arterial pressure negatively associated with loop-diuretic use. In contrast, lower eGFR and COPD were negatively associated with RAS-inhibitor use (Fig. S2), while hypertension, statin and diuretic use were independent predictors for RAS-inhibitor use. Ischaemic aetiology, higher mean ar-

terial pressure, BMI $> 30 \text{ kg/m}^2$, digoxin and statin use were positively associated with beta-blocker use, while a higher heart rate was a negative predictor (Fig. S3). Lastly, independent predictors for MRA use were: higher NYHA class, lower eGFR, lower mean arterial pressure, AF, valvular disease, PAD, statin and diuretic use (Fig. S4).

Discussion

In this large contemporary HFpEF cohort, we demonstrated that in daily clinical practice many HFpEF patients receive similar treatment to HFrEF patients, while such treatments are only evidence-based in the latter group [12]. Compared to the HFrEF patient [12], HFpEF patients are older, more often female, and a large proportion of patients have a high number of comorbidities. Pharmacological therapy in HFpEF patients is primarily determined by age, sex, NYHA class and underlying comorbidities, such as renal insufficiency, AF and hypertension.

HFpEF and comorbidities

The CHECK-HF registry included a large number of elderly persons and a high percentage of women, with many comorbidities, a patient population comparable with current practice in other Western European countries [8, 10, 14]. As in previous reports, AF, renal insufficiency, diabetes and hypertension are the most common reported comorbidities in HFpEF patients [6, 15, 16]. Our results confirm that comorbidities are more prevalent with increasing age [17].

Clarification of the distribution of comorbidities in HFpEF patients is important, since it has been shown that HFpEF patients could be differentiated into several subgroups, based on comorbidities and other clinical parameters [18]. It has been shown that these HFpEF subgroups have significant differences in HF prognosis [18]. Some beneficial effects of treatments recommended for HFpEF patients have been demonstrated in specific HFpEF subgroups, suggesting that an HFpEF phenotype-specific treatment strategy may be warranted [19].

Drug therapy prescribed to HFpEF patients

Despite the lack of guideline-recommended treatment for HFpEF patients [4], the prescription rates of beta-blockers and RAS inhibitors were high in the CHECK-HF registry, similar to other European cohorts [8, 10, 14]. These medications were most likely prescribed for the treatment of comorbidities, such as hypertension and AF. Similarly, many HFpEF patients received loop diuretics, which were most likely prescribed to treat congestion, as recommended by the HF guidelines [4]. Multivariable analysis showed that the most important determinants of the medication profile are the presence of hypertension, congestion and a higher NYHA class.

The results from the Swedish Heart Failure Registry, demonstrating a reduced all-cause mortality in HFpEF patients treated with beta-blockers compared with patients without beta-blockers, might have influenced physicians in prescribing beta-blockers in HFpEF patients. [20]. Additionally, a recent Cochrane review, including 1046 patients from three randomised controlled trials, demonstrated a significant reduction in all-cause mortality, but no reduction in HF-related hospitalisations [21], although the findings of the Cochrane review could not have influenced our results.

Hypothetically, physicians might have been influenced to prescribe MRAs to reduce left ventricular remodelling and fibrosis in HFpEF patients, as a recent Cochrane review demonstrated a beneficial effect of MRAs in preventing HF hospitalisations in HFpEF patients [21]. Furthermore, a post hoc analysis of the TOPCAT trial, investigating spironolactone, showed regional differences between the Americas and Russia/Georgia, indicating that MRAs might have

beneficial effects on mortality in the former [22]. Randomised trials investigating the effects of RAS inhibitors in HFpEF patients did not show a reduction in mortality or HF-related hospitalisations [21]. Most of these trials were underpowered or could have been biased due to the large heterogeneity of the HFpEF population. In contrast, some observational studies have demonstrated an association between RAS-inhibitor use and lower all-cause mortality in HFpEF patients [23]. Importantly some of the HF drugs may have been prescribed simply because patients were diagnosed with HF (in this case HFpEF) and because physicians (and possibly also their patients) felt that the prescription of medication may confer prognostic benefit.

Strengths and limitations

This study has several strengths. First, the CHECK-HF registry is currently one of the largest European heart failure registries. Another strength is the detailed information on medication use and comorbidities. Third, this cohort included a large subset of HFpEF patients with a diagnosis according to ESC guidelines. A limitation of this study is the lack of follow-up data. Therefore, no associations can be studied for clinical outcomes or mortality. In addition, specific reasons for prescribing medication were not recorded; therefore, any conclusions remain speculative. Finally, in a considerable number of patients, data on eGFR were missing. Although multiple imputation was used to adjust for the missing values, some bias might have occurred.

Conclusion

We demonstrated that many of the 2153 HFpEF patients in this large contemporary cohort receive beta-blockers, RAS inhibitors and MRAs. The prescription of beta-blockers, RAS inhibitors and MRAs in HFpEF patients is primarily determined by age, sex, NYHA class and underlying comorbidities.

Acknowledgements We thank the participating nurses and cardiologists specialised in the treatment of heart failure at all the participating sites for including patients and storing patient data. We acknowledge the work of Rik van de Kamp (Servier Pharma, Leiden, The Netherlands) for the development of the software programme.

Funding Servier Pharma (Leiden, The Netherlands) funded data collection and data input by the participating centres, as well as development of the software programme. The CHECK-HF steering committee received no funding for this project. The current study was initiated by the authors and was designed, conducted, interpreted and reported independently of the sponsor.

Conflict of interest A. Uijl, J.F. Veenis, H.P. Brunner-La Rocca, V. van Empel, G.C.M. Linssen, F.W. Asselbergs, C. van der Lee, L.W.M. Eurlings, H. Kragten, N.Y.Y. Al-Windy, A. van der Spank,

S. Koudstaal, J.J. Brugts and A.W. Hoes declare that they have no competing interests.

Open Access This article is licensed under a Creative Commons Attribution 4.0 International License, which permits use, sharing, adaptation, distribution and reproduction in any medium or format, as long as you give appropriate credit to the original author(s) and the source, provide a link to the Creative Commons licence, and indicate if changes were made. The images or other third party material in this article are included in the article's Creative Commons licence, unless indicated otherwise in a credit line to the material. If material is not included in the article's Creative Commons licence and your intended use is not permitted by statutory regulation or exceeds the permitted use, you will need to obtain permission directly from the copyright holder. To view a copy of this licence, visit <http://creativecommons.org/licenses/by/4.0/>.

References

- Dunlay SM, Roger VL, Redfield MM. Epidemiology of heart failure with preserved ejection fraction. *Nat Rev Cardiol.* 2017;14:591–602.
- Steinberg BA, Zhao X, Heidenreich PA, et al. Trends in patients hospitalized with heart failure and preserved left ventricular ejection fraction: prevalence, therapies, and outcomes. *Circulation.* 2012;126:65–75.
- Chioncel O, Lainscak M, Seferovic PM, et al. Epidemiology and one-year outcomes in patients with chronic heart failure and preserved, mid-range and reduced ejection fraction: an analysis of the ESC Heart Failure Long-Term Registry. *Eur J Heart Fail.* 2017;19:1574–85.
- Ponikowski P, Voors AA, Anker SD, et al. 2016 ESC guidelines for the diagnosis and treatment of acute and chronic heart failure: the task force for the diagnosis and treatment of acute and chronic heart failure of the European Society of Cardiology (ESC). Developed with the special contribution of the Heart Failure Association (HFA) of the ESC. *Eur J Heart Fail.* 2016;18:891–975.
- Bhatia RS, Tu JV, Lee DS, et al. Outcome of heart failure with preserved ejection fraction in a population-based study. *N Engl J Med.* 2006;355:260–9.
- Ergatoules C, Schaufelberger M, Andersson B, et al. Non-cardiac comorbidities and mortality in patients with heart failure with reduced vs. preserved ejection fraction: a study using the Swedish Heart Failure Registry. *Clin Res Cardiol.* 2019;108:1025–33.
- Henkel DM, Redfield MM, Weston SA, Gerber Y, Roger VL. Death in heart failure: a community perspective. *Circ Heart Fail.* 2008;1:91–7.
- Stalhammar J, Stern L, Linder R, et al. The burden of preserved ejection fraction heart failure in a real-world Swedish patient population. *J Med Econ.* 2014;17:43–51.
- Solomon SD, McMurray JJV, Anand IS, et al. Angiotensin-neprilysin inhibition in heart failure with preserved ejection fraction. *N Engl J Med.* 2019;381:1609–20.
- Kaplon-Cieslicka A, Tyminska A, Peller M, et al. Diagnosis, clinical course, and 1-year outcome in patients hospitalized for heart failure with preserved ejection fraction (from the Polish Cohort of the European Society of Cardiology Heart Failure Long-Term Registry). *Am J Cardiol.* 2016;118:535–42.
- Brugts JJ, Linssen GCM, Hoes AW, Brunner-La Rocca HP, CHECK-HF investigators. Real-world heart failure management in 10,910 patients with chronic heart failure in the Netherlands: design and rationale of the chronic heart failure ESC guideline-based cardiology practice quality project (CHECK-HF) registry. *Neth Heart J.* 2018;26:272–9.
- Brunner-La Rocca HP, Linssen GC, Smeele FJ, et al. Contemporary drug treatment of chronic heart failure with reduced ejection fraction: the CHECK-HF Registry. *JACC Heart Fail.* 2019;7:13–21.
- McMurray JJ, Adamopoulos S, Anker SD, et al. ESC guidelines for the diagnosis and treatment of acute and chronic heart failure 2012: the task force for the diagnosis and treatment of acute and chronic heart failure 2012 of the European Society of Cardiology. Developed in collaboration with the Heart Failure Association (HFA) of the ESC. *Eur Heart J.* 2012of;33:1787–847.
- Casado J, Montero M, Formiga F, et al. Clinical characteristics and prognostic influence of renal dysfunction in heart failure patients with preserved ejection fraction. *Eur J Intern Med.* 2013;24:677–83.
- Streng KW, Nauta JF, Hillege HL, et al. Non-cardiac comorbidities in heart failure with reduced, mid-range and preserved ejection fraction. *Int J Cardiol.* 2018;271:132–9.
- Georgiopolou VV, Velayati A, Burkman G, et al. Comorbidities, sociodemographic factors, and hospitalizations in outpatients with heart failure and preserved ejection fraction. *Am J Cardiol.* 2018;121:1207–13.
- Tromp J, Shen L, Jhund PS, et al. Age-related characteristics and outcomes of patients with heart failure with preserved ejection fraction. *J Am Coll Cardiol.* 2019;74:601–12.
- Kao DP, Lewsey JD, Anand IS, et al. Characterization of subgroups of heart failure patients with preserved ejection fraction with possible implications for prognosis and treatment response. *Eur J Heart Fail.* 2015;17:925–35.
- Juilliere Y, Venner C, Filippetti L, et al. Heart failure with preserved ejection fraction: a systemic disease linked to multiple comorbidities, targeting new therapeutic options. *Arch Cardiovasc Dis.* 2018;111:766–81.
- Lund LH, Benson L, Dahlström U, Edner M, Friberg L. Association between use of beta-blockers and outcomes in patients with heart failure and preserved ejection fraction. *JAMA.* 2014;312:2008–18.
- Martin N, Manoharan K, Thomas J, Davies C, Lumbers RT. Beta-blockers and inhibitors of the renin-angiotensin aldosterone system for chronic heart failure with preserved ejection fraction. *Cochrane Database Syst Rev.* 2018;6:CD12721.
- Pfeffer MA, Claggett B, Assmann SF, et al. Regional variation in patients and outcomes in the Treatment of Preserved Cardiac Function Heart Failure With an Aldosterone Antagonist (TOPCAT) trial. *Circulation.* 2015;131:34–42.
- Lund LH, Benson L, Dahlström U, Edner M. Association between use of renin-angiotensin system antagonists and mortality in patients with heart failure and preserved ejection fraction. *JAMA.* 2012;308:2108–17.