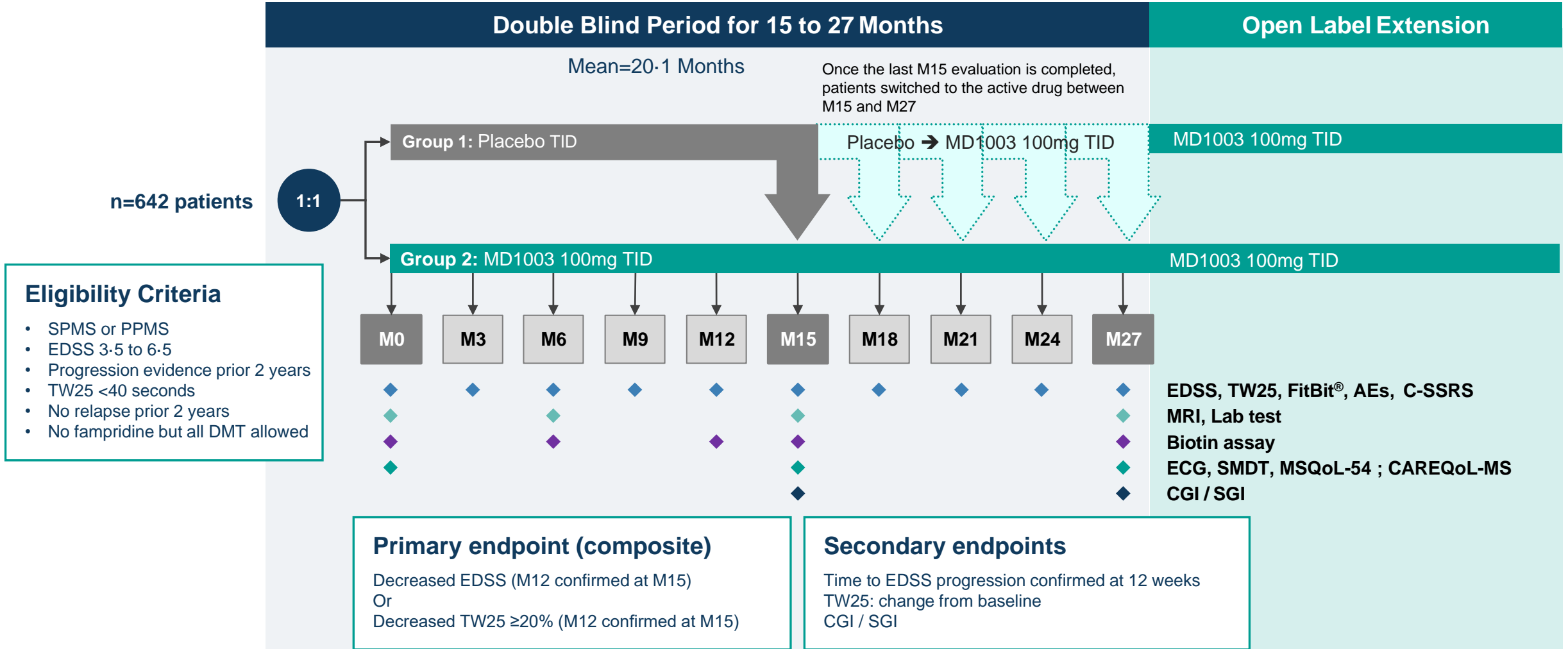
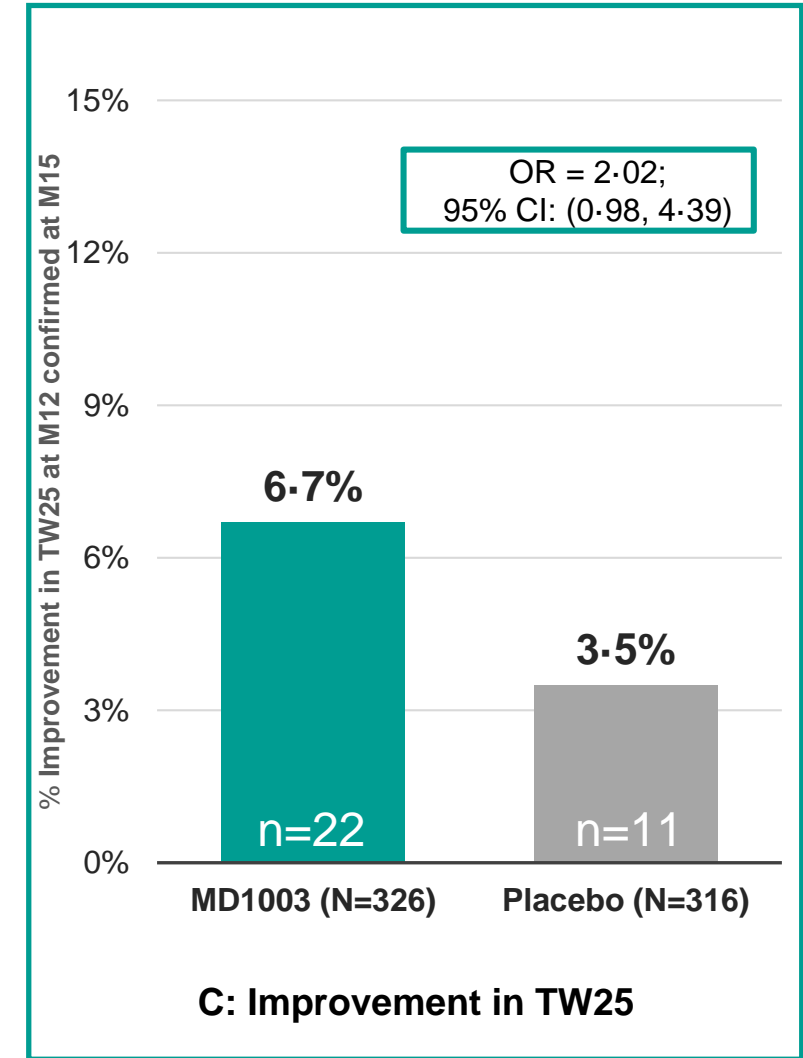
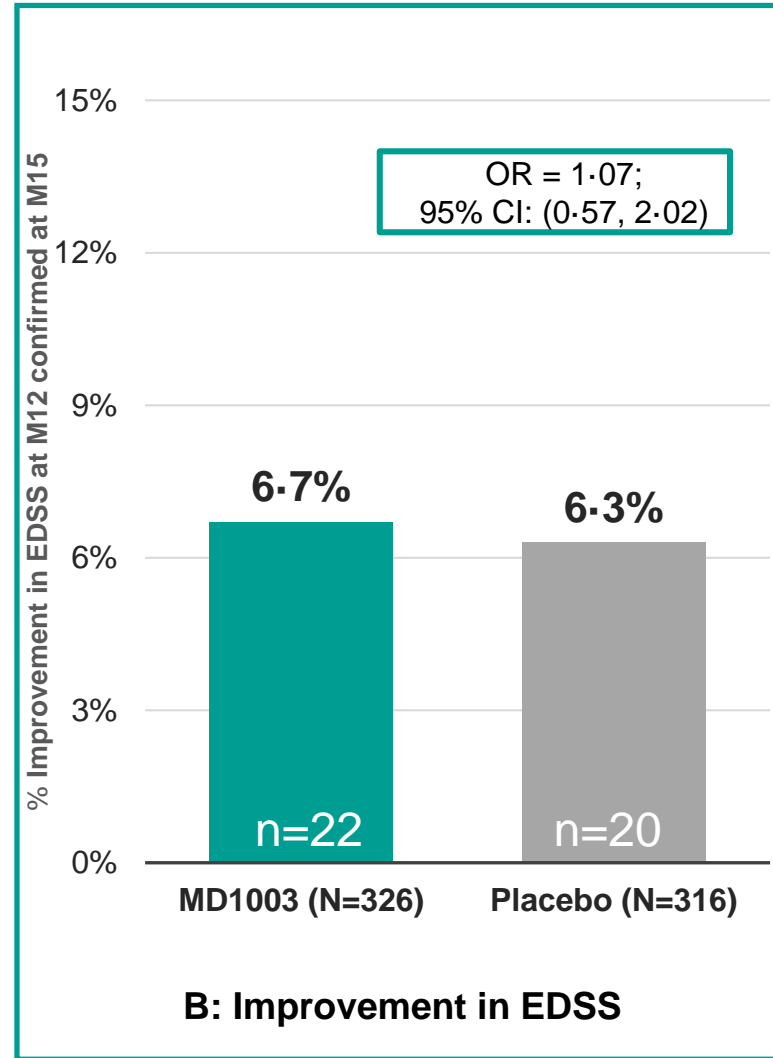
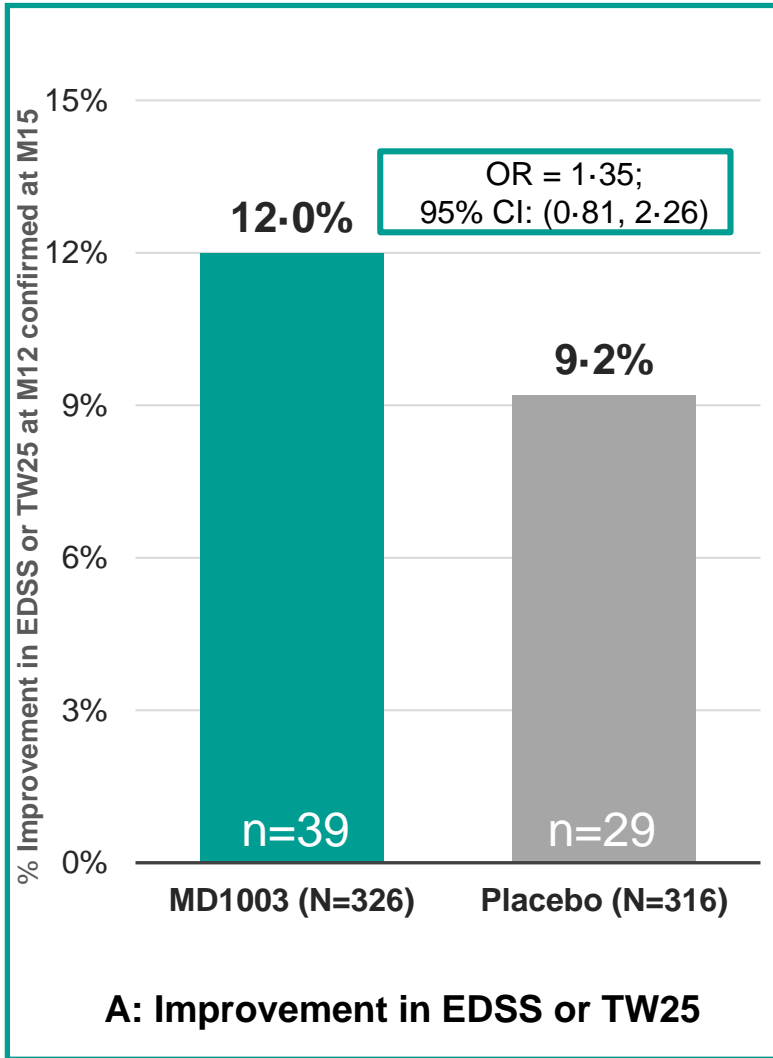


Figure S1: SPI2 Study Design



EDSS: Expanded Disability Status Scale; MRS: Magnetic Resonance Spectroscopy; MSQoL-54: Multiple Sclerosis Quality of Life-54; SGI: subject-assessed Clinical Global Impression Scale; SMDT: Symbol Digit Modalities Test; TW25: timed 25-foot walk; AEs: Adverse events; CAREQoL-MS: caregiver health-related quality of life in multiple sclerosis; CGI: clinician-assessed Clinical Global Impression Scale; ECG: electrocardiogram; * ≥ 1 point if initial EDSS from 3.5 to 5.5; ≥ 0.5 point if initial EDSS from 6 to 6.5
 Source: Protocol No: MD1003CT2016-01MS-SPI2; EudraCT No: 2016-000700-29

Figure S2: Primary endpoint– Improvement in EDSS or TW25 at M12 confirmed at M15



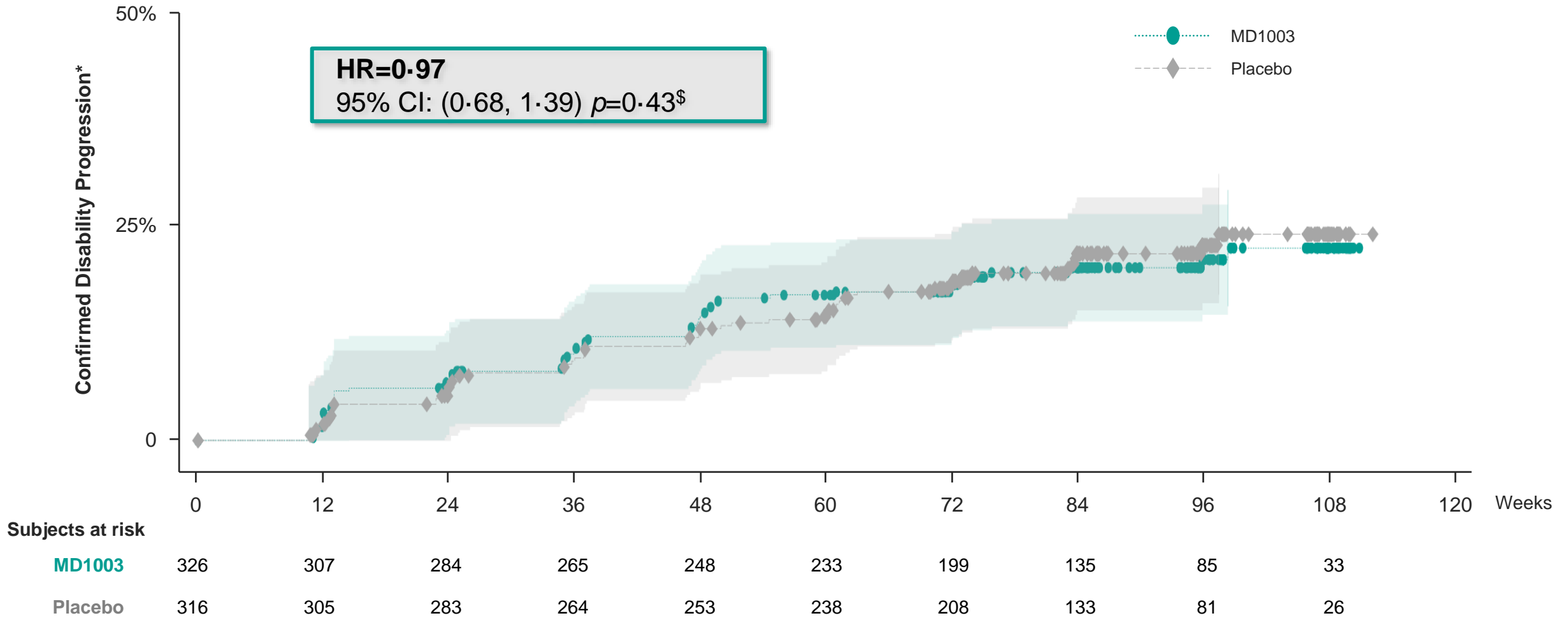
EDSS response is defined as: decrease of at least 1 point if baseline EDSS 3.5 to 5.5 and of at least 0.5 points if baseline EDSS 6 to 6.5 compared to the lowest EDSS at inclusion and randomization visits.

TW25 response is defined as: decrease of at least 20% compared to the lowest mean of TW25 attempts at inclusion and randomization visits.

Asymptotic logistic regression analysis for the primary efficacy endpoint with study treatment group, disease history, and geographical region as factors; ITT Analysis Set – single imputation of missing values as non-response.

CI: confidence interval; EDSS: Expanded Disability Status Scale; OR: odds ratio; TW25: timed 25-foot walk.

Figure S3: First secondary endpoint – Time to 12-week confirmed EDSS progression



ITT analysis set; analysis was performed with a Proportional Hazards model stratified for geographical region and disease history. ^{\$}Wald-test p-value.

*12-week confirmed EDSS progression is defined by an increase of at least 1 point if baseline EDSS 3-5 to 5-5 and of at least 0.5 point if baseline EDSS 6 to 6.5 with respective confirmation 12 weeks later. Patients with initial disability progression who discontinued treatment early with no confirmatory EDSS assessment were considered as having confirmed disability progression.

EDSS = Expanded Disability Status Scale; HR = hazard ratio; ITT = intention-to-treat

Figure S4: First Secondary Endpoint – Subgroup Analysis

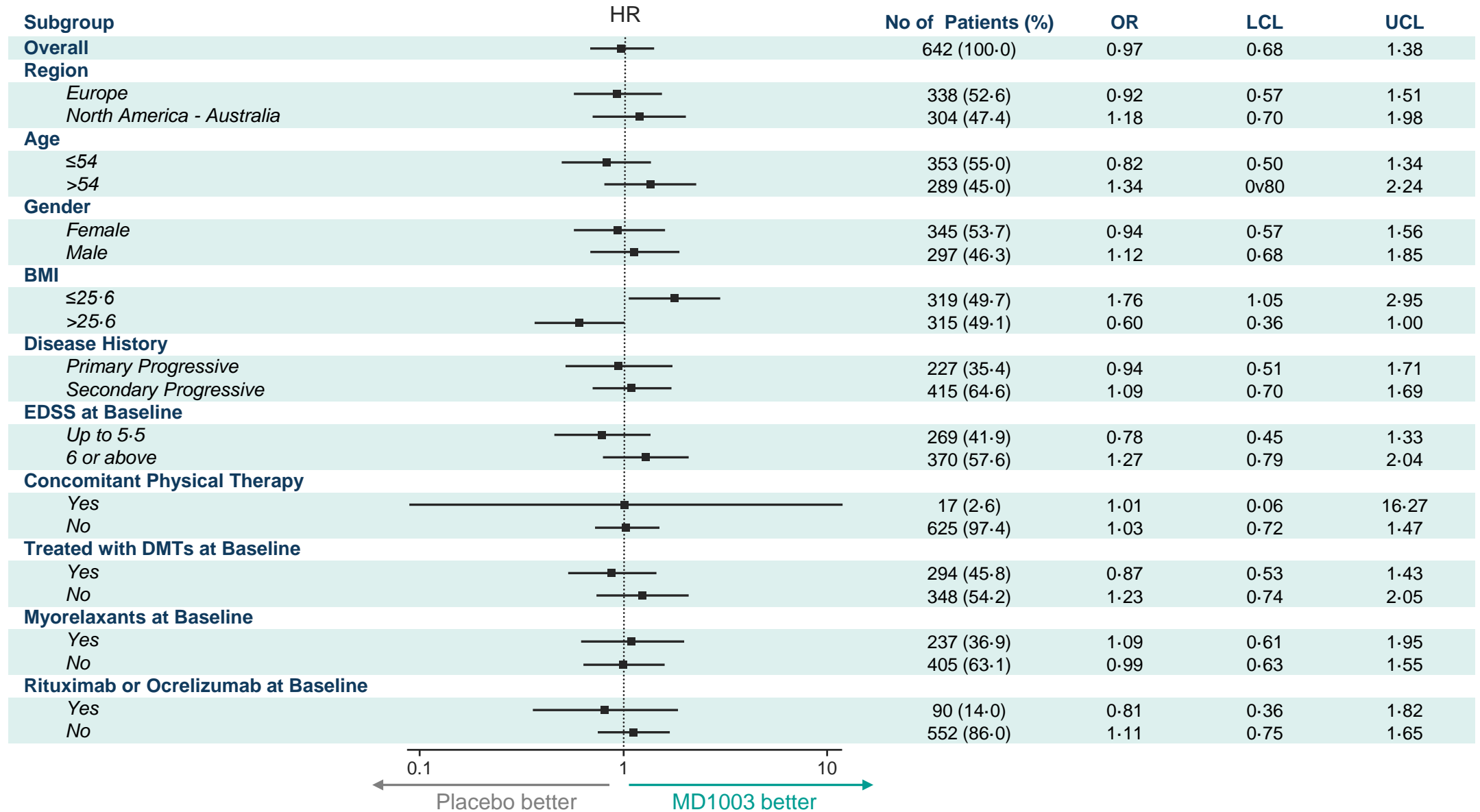
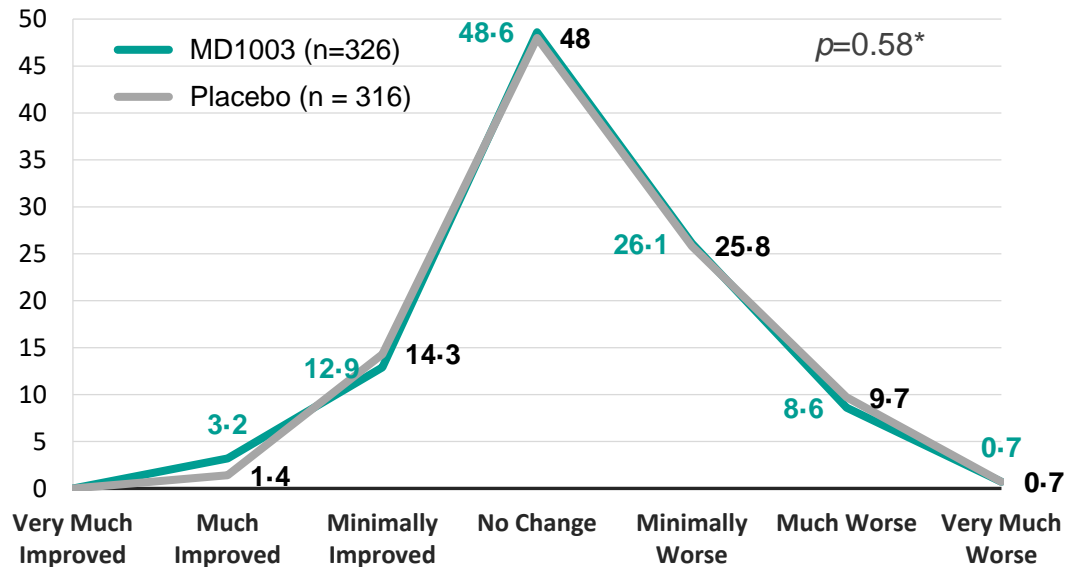


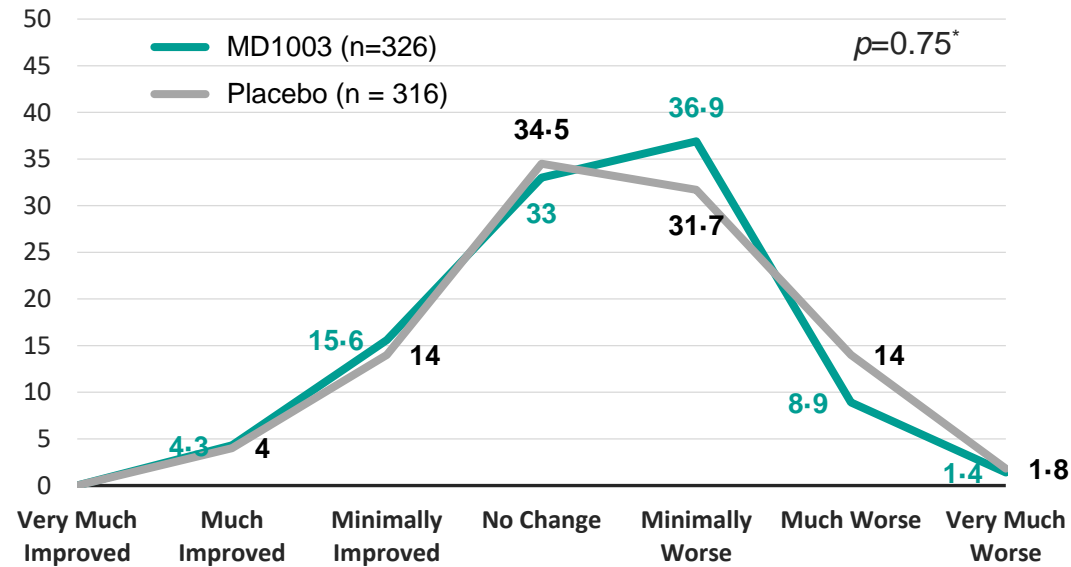
Figure S5: Secondary endpoint – CGI/SGI

Clinician rating (CGI)



Improvement

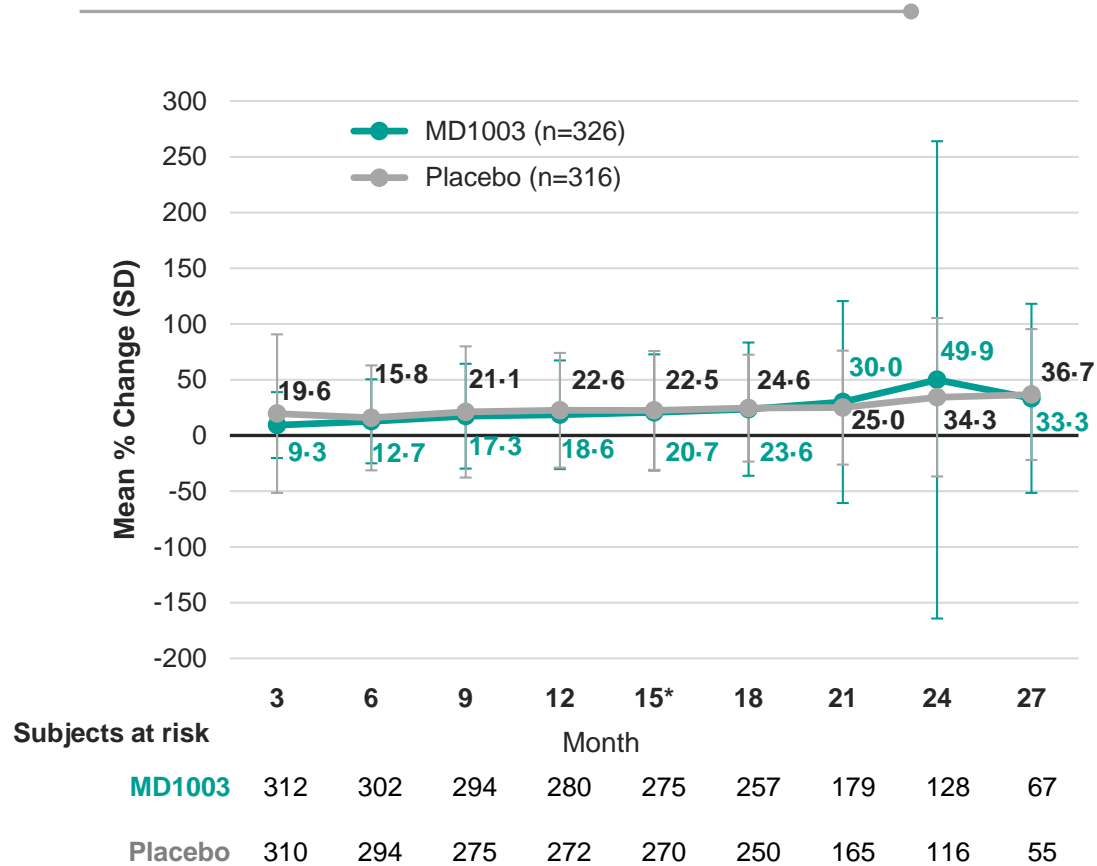
Subject rating (SGI)



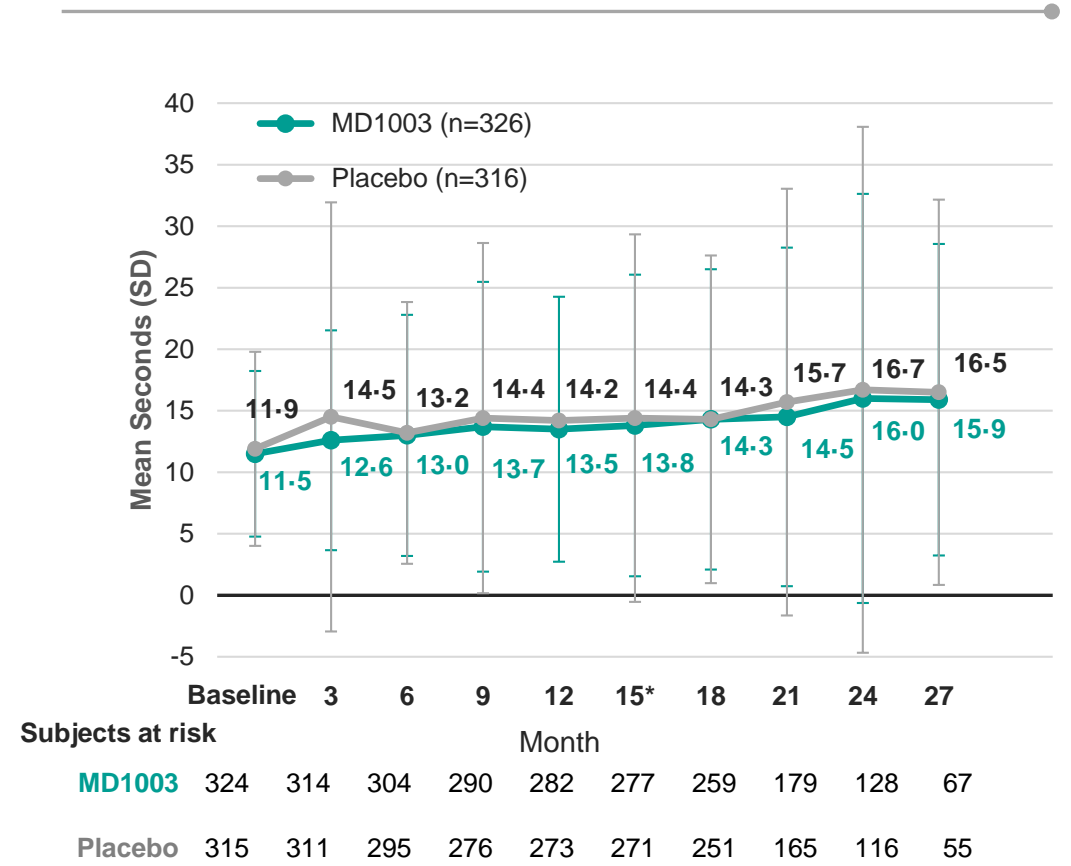
Improvement

Figure S6: Secondary Endpoint – Change in T25W

Mean change from Baseline in TW25 % (SD)



Mean TW25 seconds (SD)

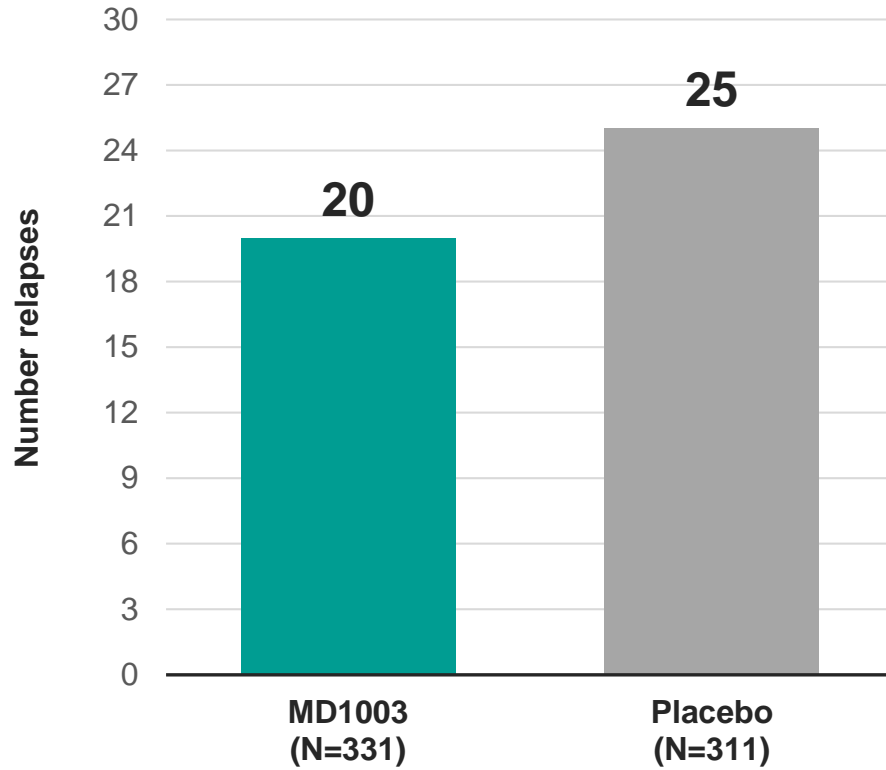


*One-sided p=0.52
 Hodges-Lehmann Point estimate for location shift of distributions (95% CI): 0.30 (-5.89 , 6.49)

ITT analyses set; Descriptive summary
 *One-sided Van Elteren test stratified for disease history (SPMS/PPMS) and geographical region (North America-Australia/Europe) comparing the two study treatment groups.

Figure S7: Confirmed Relapses by Clinical Adjudication Committee

Confirmed Relapse



Annualized Relapse Rate

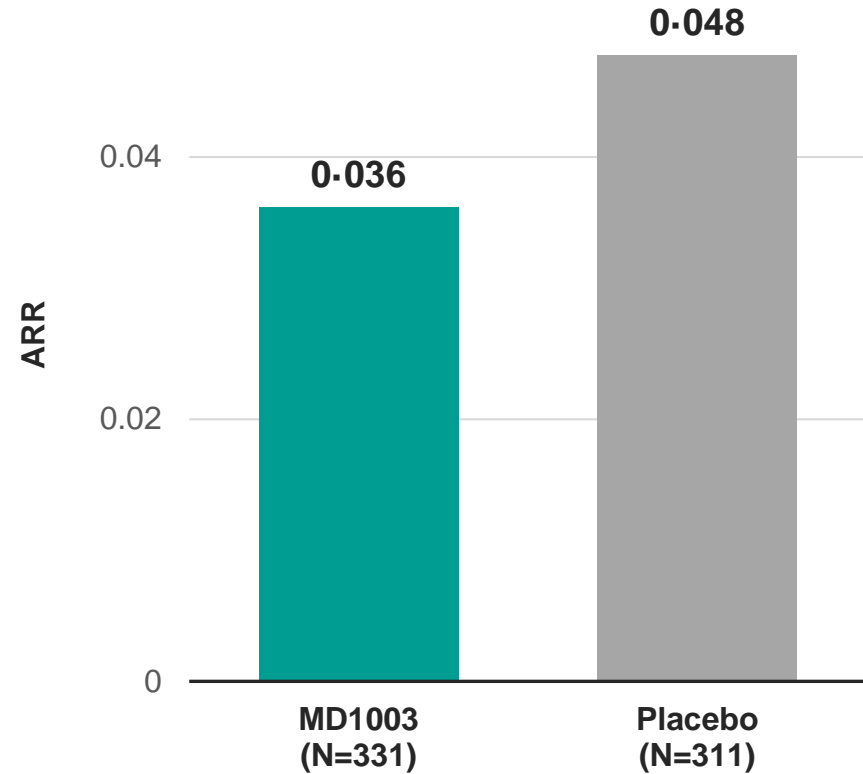
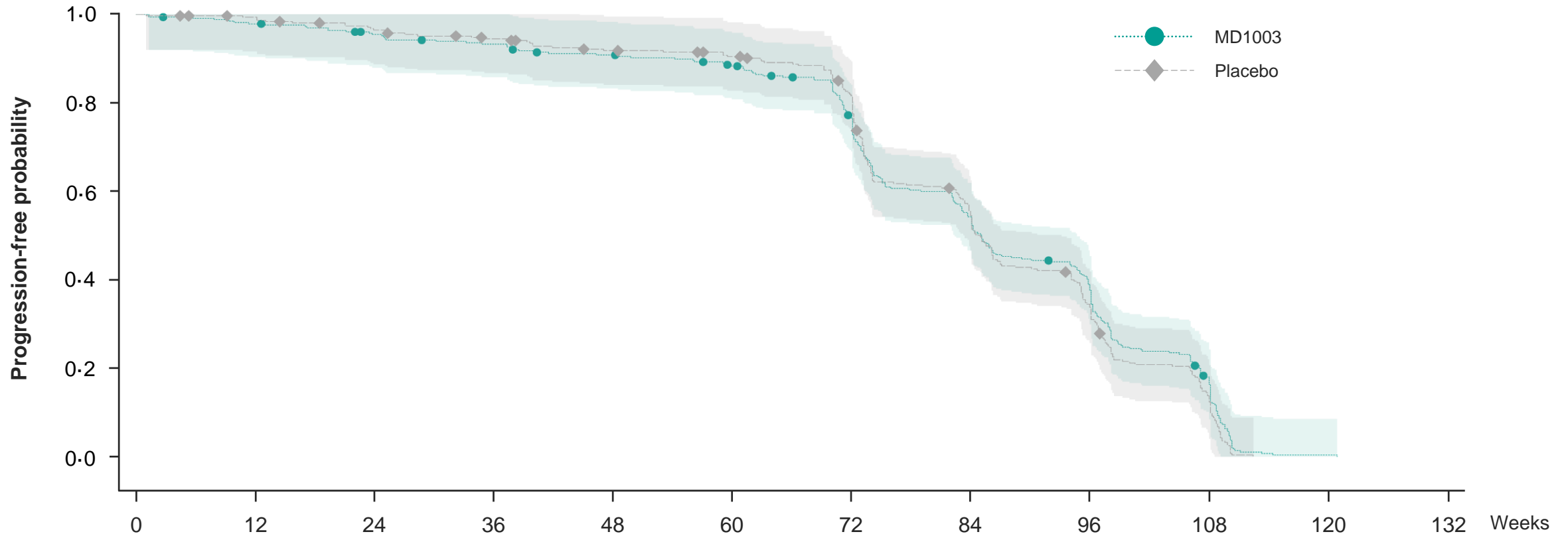


Figure S8: Time to First Relapse Confirmed by the Adjudication Committee



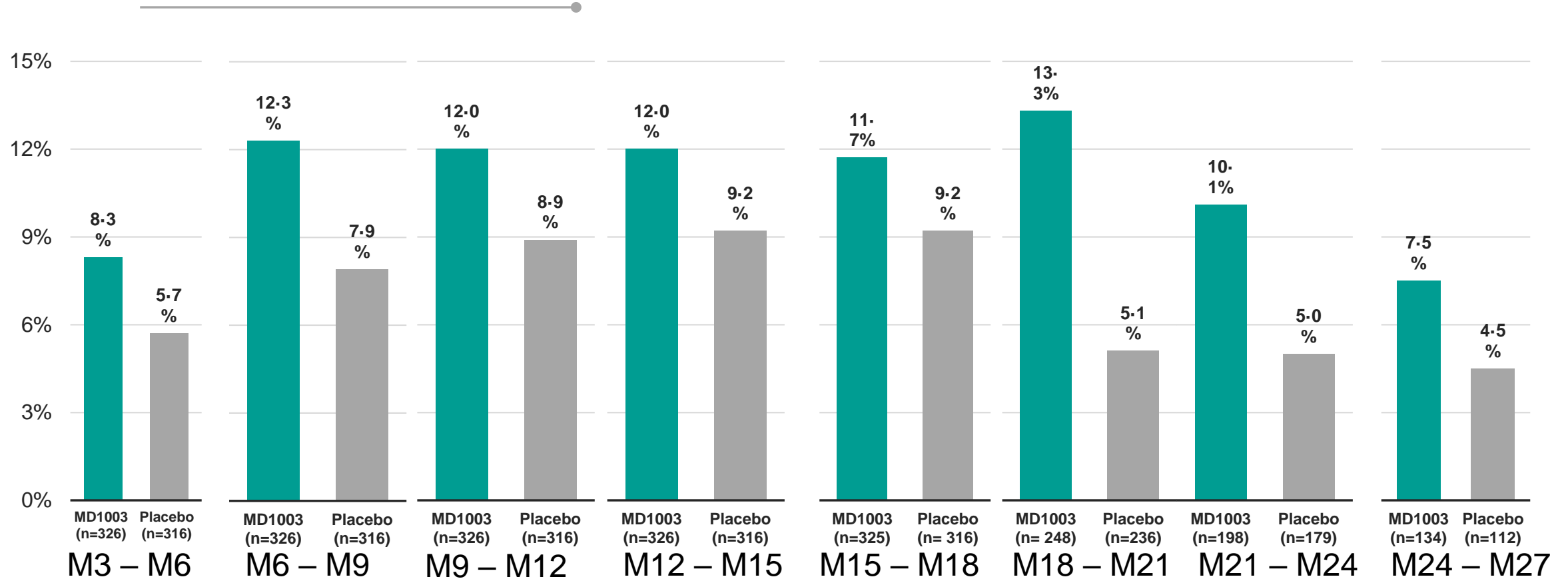
Subjects at risk

MD1003	331	322	311	303	292	281	228	164	107	37	1	0
Placebo	311	306	295	286	275	268	227	149	89	28	0	0

Figure S9: SPI2 Primary Endpoint at Different Timepoints

Improvement in EDSS or Improvement in TW25 confirmed at + 3 months

EDSS or TW25 responder at different timepoints



Additional Descriptive Analysis of Composite Confirmed Response (with Single Imputation of Missing Data as Non-Response) by Visit (ITT Analysis Set)
 Response is defined for EDSS: decrease of at least 1 point if baseline EDSS 3-5 to 5-5 and of at least 0.5 point if baseline EDSS 6 to 6.5 compared to the lowest EDSS at inclusion and randomization visits
 for TW25: decrease of at least 20% compared to the lowest mean of TW25 attempts at inclusion and randomization visits

Figure S10: Time to Confirmed Disease Improvement on EDSS or TW25

KAPLAN MEIER survival curve

Time to 3 month confirmed disease improvement on EDSS or TW25

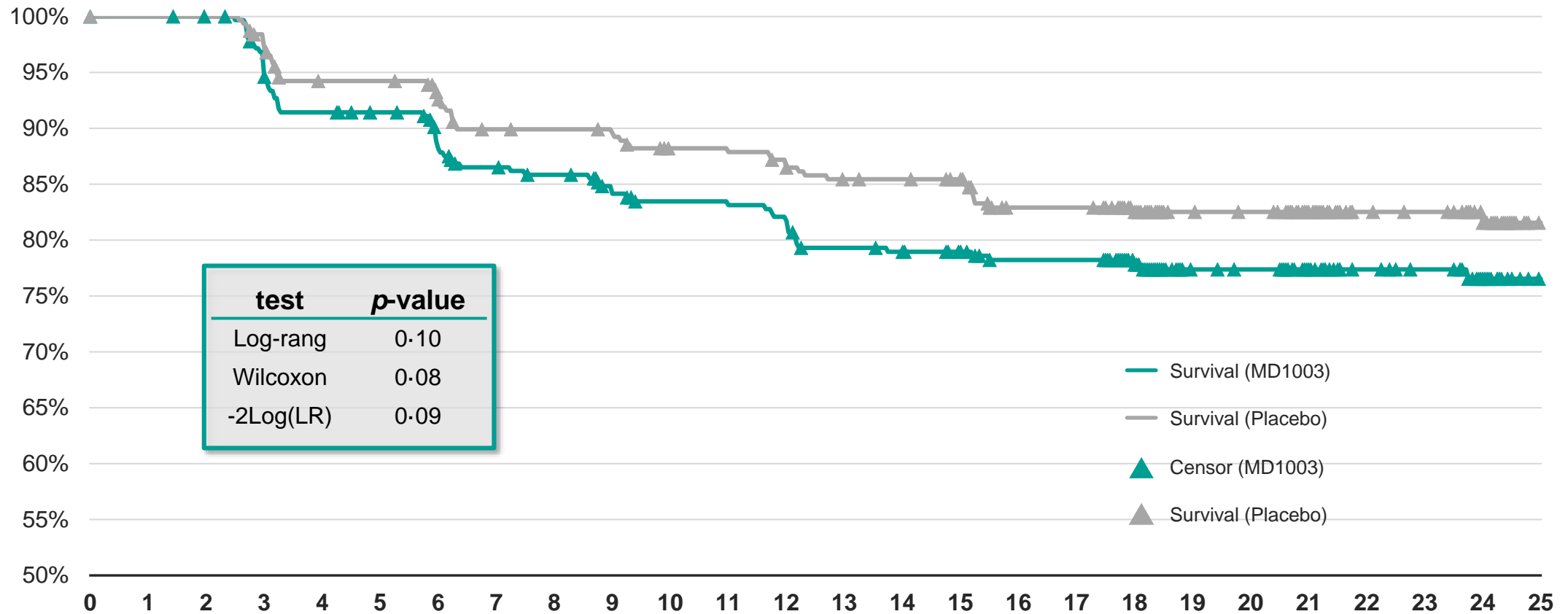
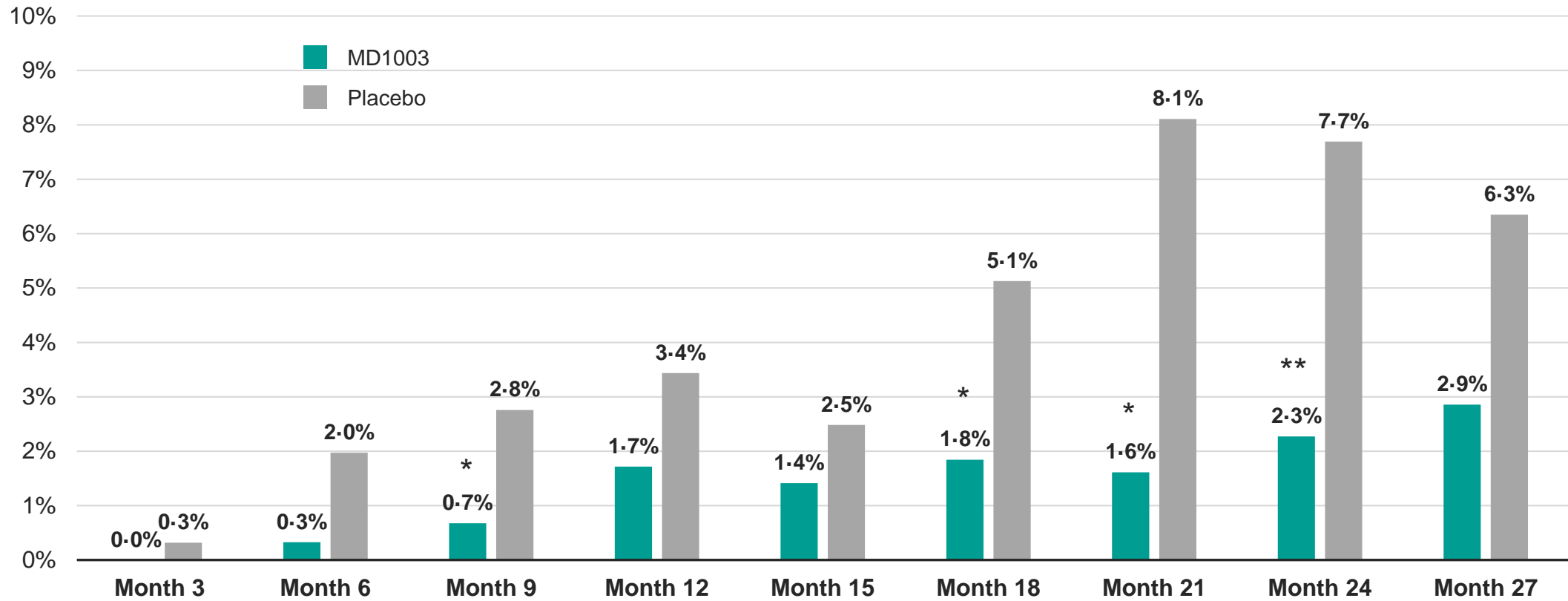


Figure S11: The Proportions of Patients Unable to Perform the TW25 Because of MS Worsening

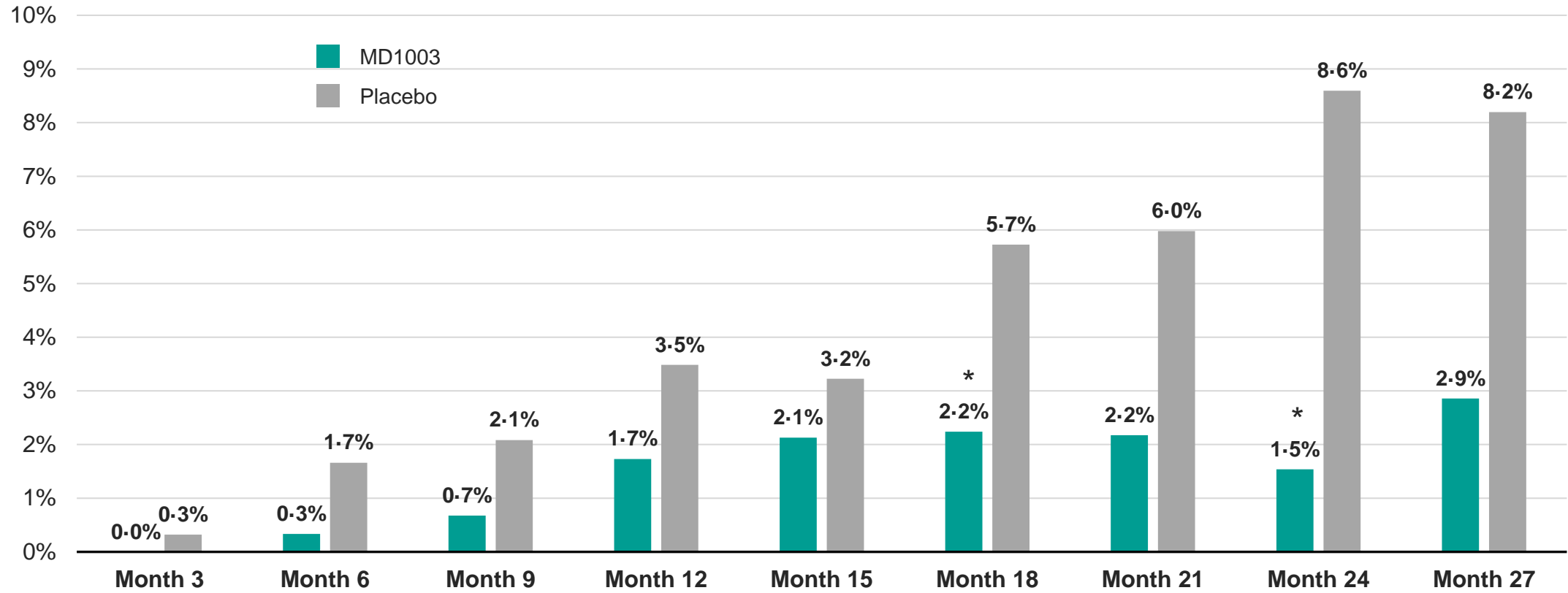
TW25 missing assessement due to MS worsening (per visit view)



* p<0.05; ** p<0.01, Fisher exact test

Figure S12: The Proportions of Participants with an EDSS of at least 7

Patients with EDSS ≥ 7 - Visit wise (per visit view)



* $p < 0.05$; Fisher exact test

Figure S13: EDSS Mean Change versus M0

EDSS mean change *versus* M0 (per visit view)

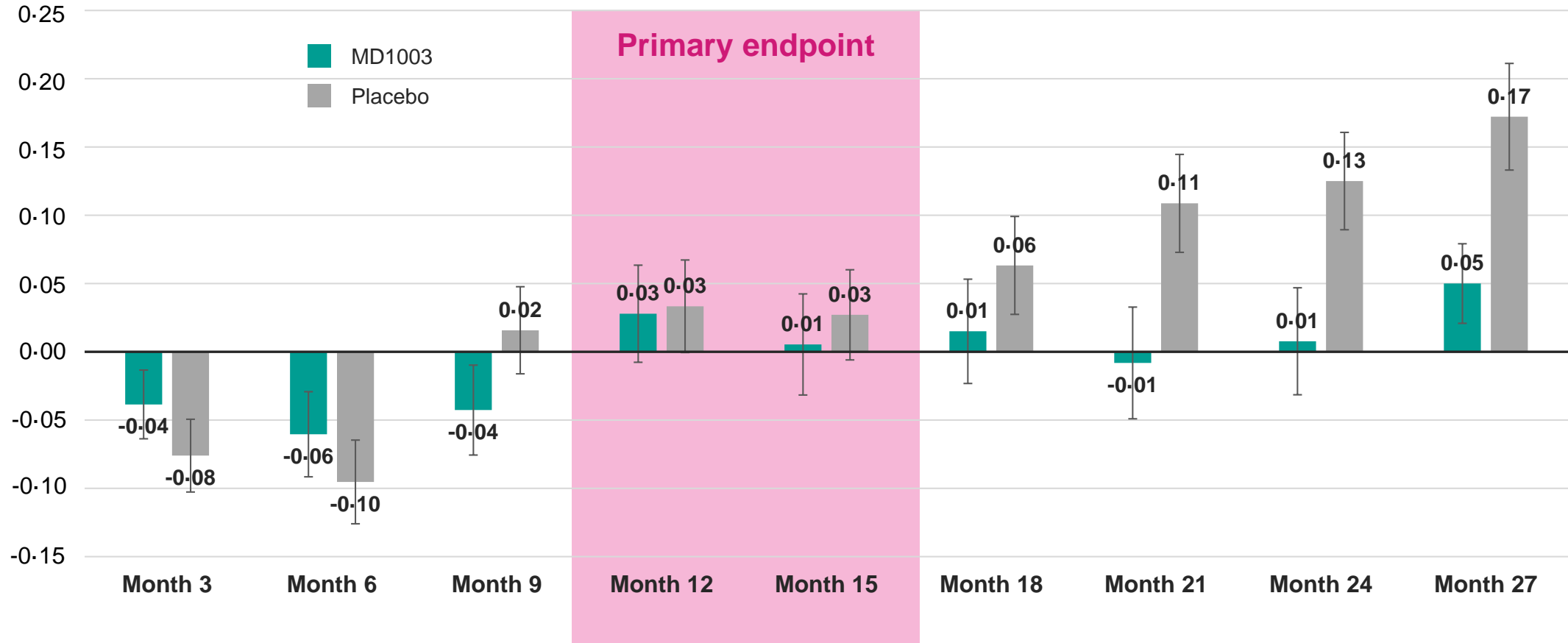


Figure S14: Disability Progression in SPI2, MS-SPI and Other Progressive MS Studies

