

The impact of immunosuppression on chronic kidney disease in people living with HIV; the D:A:D study

L Ryom<sup>1</sup>, JD Lundgren<sup>1</sup>, P Reiss<sup>2,3</sup>, M Ross<sup>4</sup>, O Kirk<sup>1</sup>, CA Fux<sup>5</sup>, P Morlat<sup>6</sup>, E Fontas<sup>7</sup>, C Smith<sup>8</sup>, S De Wit<sup>9</sup>, A d'Arminio Monforte<sup>10</sup>, W El Sadr<sup>11</sup>, C Hatleberg<sup>1</sup>, A Phillips<sup>8</sup>, C Sabin<sup>8</sup>, M Law<sup>12</sup> and A Mocroft<sup>8</sup> for the D:A:D Study Group

1 Rigshospitalet, University of Copenhagen, CHIP, Department of Infectious Diseases, Section 2100, Centre for Cardiac, Vascular, Pulmonary and Infectious Diseases, Copenhagen, Denmark

2 Amsterdam University Medical Centers (location AMC), Dept. of Global Health and Div. of Infectious Diseases, University of Amsterdam, Amsterdam, The Netherlands

3 HIV Monitoring Foundation, Amsterdam, The Netherlands

4 Albert Einstein College of Medicine/Montefiore Medical Center, Bronx, NY, USA

5 Clinic for Infectious Diseases and Hospital Hygiene, Kantonsspital Aarau, Aarau, Switzerland

6 Université de Bordeaux, INSERM U 897, CHU de Bordeaux, France

7 Dept. of Public Health, Nice University Hospital, Nice, France

8 Centre for Clinical Research, Epidemiology, Modelling and Evaluation (CREME), Institute for Global Health, University College London, London, United Kingdom

9 Division of Infectious Diseases, Saint Pierre University Hospital, Université Libre de Bruxelles, Brussels, Belgium

10 Dipartimento di Scienze della Salute, Clinica di Malattie Infettive e Tropicali, Azienda Ospedaliera-Polo Universitario San Paolo, Milan, Italy

11 ICAP-Columbia University and Harlem Hospital, New York, USA

12 Kirby Institute, UNSW Sydney, Sydney, Australia

**This work was in part presented as poster presentation at CROI 2016, Boston, USA.**

**This manuscript has not been submitted or accepted for publication elsewhere.**

**All authors have seen and approved the content of the manuscript and have contributed significantly to the work.**

#### **Corresponding author**

Lene Ryom, M.D., PhD

Rigshospitalet, University of Copenhagen

CHIP, Department of Infectious Diseases, Section 2100

Centre for Cardiac, Vascular, Pulmonary and Infectious Diseases

Blegdamsvej 9

DK-2100 Copenhagen Ø

Denmark

Tel: + 45 35 45 57 65/ Fax: +45 35 45 57 57/ [lene.ryom.nielsen@regionh.dk](mailto:lene.ryom.nielsen@regionh.dk)

## summary

While HIV-related immunosuppression duration and severity both predict chronic kidney disease (CKD), the duration association is strongest. CKD risk related to low CD4 count diminishes once immune function is restored, and most strongly effects persons with low estimated CKD risk.

Accepted Manuscript

## ABSTRACT

### Background

Relations between different measures of HIV-related immunosuppression and chronic kidney disease (CKD) remain unknown.

### Methods

Immunosuppression measures included baseline, current, time-lagged and nadir CD4, years and percentage of follow-up (%FU) with CD4 $\leq$ 200, and CD4 recovery. CKD: confirmed estimated glomerular filtration rate <60mL/min/1.73m<sup>2</sup>.

### Results

Of 33,791 persons 2,226 developed CKD. Univariably, all immunosuppression measures predicted CKD. Multivariably, the strongest predictor was %FU CD4 $\leq$ 200 (0 vs. >25%, IRR 0.77 [0.68-0.88]) with highest effect in those at low D:A:D CKD risk (0.45 [0.24-0.80]) vs. 0.80 [0.70-0.93]).

### Conclusion

Longer immunosuppression duration most strongly predicts CKD and affects persons at low CKD risk more.

**Key words:** CKD, chronic kidney disease, eGFR, renal, HIV, Immunosuppression, CD4

## Introduction

It is well documented that in the modern antiretroviral treatment (ART) era people living with HIV (PLWH) are at increased risk of chronic kidney disease (CKD) compared to the general HIV-negative population [1, 2]. The risk profile for CKD in PLWH is complex with multiple possible aetiologies including HIV itself, systemic inflammation, nephrotoxic ART, viral hepatitis, diabetes and hypertension [3-5]. Several studies have further showed that immunosuppression, expressed as a low CD4 count, is an independent predictor of CKD [3-5]. Likewise, in the Strategic Timing of AntiRetroviral Treatment (START) trial the prevalence of CKD in PLWH with preserved immune function was relatively low [6]. Data on the exact nature of the relation between immunosuppression and CKD is, however, limited. The aim of this study was therefore to investigate the association between different measures of impaired immune function including duration and severity of immunosuppression and incident CKD in a large heterogeneous cohort.

## Methods

### *Study population*

The Data Collection on Adverse events of Anti-HIV Drugs Study (D:A:D) is a prospective cohort collaboration with more than 49,000 HIV-1-positive persons in Europe, the United States and Australia; details have been published previously [7]. Clinical events are collected in real time and data on demographics, ART, AIDS events, laboratory test results, viral hepatitis and cardiovascular risk factors is collected electronically at enrolment and every six months hereafter.

### *Endpoint and immunosuppression definitions*

CKD was defined as confirmed ( $\geq 3$  months apart) estimated glomerular filtration rate (eGFR)  $\leq 60$  mL/min/1.73m<sup>2</sup> [8]. The Cockcroft Gault equation was, as in earlier D:A:D renal analyses, used as an eGFR surrogate as several of the participating cohorts are prohibited from collecting data on ethnic origin.

The immune function measurements considered included *severity of immunosuppression*: baseline, nadir, current and 6-months' time-lagged current CD4 count; *duration of immunosuppression*: percentage of follow-up time (%FU) spent with CD4 count  $\leq 200$  cells/mm<sup>3</sup> and follow-up time spent with CD4  $\leq 200$  cells/mm<sup>3</sup> (0, 0-1 and  $>1$  years); and *CD4 count recovery*: baseline CD4 count  $\leq 200$  cells/mm<sup>3</sup> followed by current CD4 count  $> 200$  cells/mm<sup>3</sup>.

By time-lagging the CD4 count you aim at limiting risks of reverse causality.

### *Statistical analyses*

Baseline was defined as the first eGFR after 1/1/2004 (date of systematic creatinine collection initiation). Study participants without CKD and with  $\geq 3$  prospective eGFR measurements were followed until the earliest of CKD, last eGFR plus 6 months or 1/2/2016, whichever occurred first. Follow-up was divided into series of consecutive 1-monthly periods and the immunological status at the start of each follow-up period was established.

Poisson regression was, in separate models, used to assess the relationship between incident CKD and each measure of immunosuppression. In multivariable models we accounted for non-immunological factors included in the D:A:D 5-year CKD risk score including gender, age, HIV risk group, baseline eGFR, HCV status and hypertension (all measured at baseline) and exposure to nephrotoxic ART (tenofovir disoproxil fumarate,

indinavir, unboosted atazanavir, and ritonavir boosted atazanavir and lopinavir) [3]. Akaike Information Criteria (AIC) was used to indicate which measures were better CKD predictors with a lower value indicating a better fitted model.

The strongest immunosuppression predictors of CKD were tested for interactions with the D:A:D CKD risk score, demographics, ART and HIV-related factors [3].

All statistical analyses were carried out using SAS version 9.4 (Statistical Analysis Software, Cary, NC, USA).

## Results

During a median follow-up of 8.8 years (interquartile range, IQR, 6.1-10.7) 2,226 (6.6%) of the 33,791 persons included in the analysis developed CKD (incidence rate, IR, 8.1 [95% confidence interval, CI, 7.8-8.5] per 1000 person years of follow-up, PYFU). The majority developed CKD stage G3 (eGFR<sub>≤</sub>60->30 mL/min/1.73m<sup>2</sup>; 6.3%), while only smaller proportions developed CKD stage G4 (eGFR<sub>≤</sub>30->15 mL/min/1.73m<sup>2</sup>; 0.3%), stage G5 (eGFR<sub>≤</sub>15 mL/min/1.73m<sup>2</sup>; 0.03%) and end-stage renal disease (chronic dialysis 0.1% and renal transplantation 0.01%).

At baseline, the median age was 41 years (IQR 35-47), 47.6% of the study population were of white origin and 73.9% were male, Supplementary Table 1. Hypertension was present in 8.5%, diabetes in 3.8% and prior AIDS in 24.3%. The median CD4 count was 440 cells/mm<sup>3</sup> (292-627), median nadir CD4 count 230 cells/mm<sup>3</sup> (108-368) and 58.4% were virologically suppressed. The analysis included 633,763 eGFR measurements with a median of 18

measurements per person (11-26) at a median rate of 2.2 measurements per year (1.7-2.9). At baseline, the median eGFR was 102 mL/min/1.73m<sup>2</sup> (88-118).

The crude IR of CKD varied for the different immunodeficiency measures considered, but all showed approximated linear relations with declining CD4 counts, Figure 1. The highest crude IRs were seen for current and 6 months time-lagged current CD4 count  $\leq 200$  cells/mm<sup>3</sup> (13.3 [11.4-15.1] and 13.5 [11.6-15.3] per 1000 PYFU respectively). The greatest difference in IRs were seen between nadir CD4  $\leq 50$  cells/mm<sup>3</sup> vs.  $>500$  cells/mm<sup>3</sup> (11.4 [10.3-12.4] vs. 4.9 [4.1-5.6] per 1000 PYFU).

There were 4,328 persons with baseline CD4 count  $\leq 200$  cells/mm<sup>3</sup>, of whom 309 developed CKD (IR 9.5 [8.5-10.6] per 1000 PYFU). The crude CKD IR was highest in those without CD4 recovery (baseline and current CD4 count  $\leq 200$  cells/mm<sup>3</sup>, 12.5 [10.4-14.6] per 1000 PYFU), and declined linearly with increased levels of current CD4 count at recovery (baseline CD4 count  $\leq 200$  cells/mm<sup>3</sup> followed by current CD4 count  $>500$  cells/mm<sup>3</sup>, 6.7 [4.6-8.8] per 1000 PYFU), Figure 1. Results were consistent when using a CD4 count baseline threshold of  $\leq 350$  cells/mm<sup>3</sup> rather than  $\leq 200$  cells/mm<sup>3</sup>.

In univariable analysis all measures of immunosuppression were significantly associated with increased CKD rates (all  $p < 0.01$ ), most strongly for nadir CD4 count ( $>500$  vs.  $\leq 50$  cells/mm<sup>3</sup>, IR 0.43 [0.36-0.51], AIC 40814), %FU CD4 count  $\leq 200$  cells/mm<sup>3</sup> (0% vs.  $>25\%$ , IR 0.63 [0.56-0.75], AIC 40921) and latest CD4 count ( $\geq 750$  vs.  $<50$  cells/mm<sup>3</sup>, IR 0.56 [0.48-0.66], AIC 40943). After adjustment for non-immunological variables in the D:A:D CKD risk score, the strongest immunological predictor of CKD was %FU CD4 count  $\leq 200$



cells/mm<sup>3</sup> (IRR ratio, IRR 0.77 [0.68-0.88], AIC 36262) followed by nadir CD4 count ( $\geq 500$  vs.  $\leq 50$  cells/mm<sup>3</sup>, IRR 0.77 [0.64-0.93], AIC 36304).

There was a significant ( $p=0.0016$ ) interaction between %FU CD4 count  $\leq 200$  cells/mm<sup>3</sup> and the D:A:D CKD risk score. The impact of duration of immunosuppression was stronger for those at lowest estimated CKD risk (IRR 0.45 [0.24-0.80]) compared to those at highest estimated CKD risk (IRR 0.80 [0.70-0.93]), Figure 2. We did not observe any statistically significant interaction between immunosuppression and ethnicity, age, ART status or use of nephrotoxic antiretrovirals.

To assess potential surveillance bias we calculated the frequency of eGFR measurements according to CD4 count strata. We found only small differences with a median of 2.5 (IQR 1.8-3.5) eGFRs per year in those with baseline CD4  $\leq 200$  cells/mm<sup>3</sup> vs. 2.1 (1.6-2.7) in those with baseline CD4  $> 750$  cells/mm<sup>3</sup>, and a very weak correlation ( $r=-0.11$ ) between number of eGFRs per year and baseline CD4 counts. Restricting the analysis to those with  $\geq 2$  eGFRs per year was consistent albeit with lower statistical power (data not shown).

## Discussion

While prior studies have focused on the severity of HIV-related immunosuppression as a risk factor for CKD, in this analysis we also investigated the impact of duration of immunosuppression and CD4 count recovery [3-5]. We found that the strongest independent immunologic predictor of incident CKD was a longer relative duration of immunosuppression. The magnitude of the observed association between immunosuppression and incident CKD is comparable to that reported for hypertension [3].

Furthermore, all measures of immunosuppression were consistently associated with

increased CKD incidence with an almost linear relation for most measures with particularly high CKD rates at CD4 counts  $<200$  cells/mm<sup>3</sup> and rates levelling off at CD4 counts  $>500$  cells/mm<sup>3</sup>. A 2013 study from COHERE showed that immune reconstitution for AIDS events was incomplete at CD4 counts  $<750$  cells/mm<sup>3</sup>, but for CKD it appears this threshold is slightly lower [9]. Our data also suggest the increased risk of CKD due to immunosuppression may be at least partially reversible even after severely impaired CD4 count.

While an observational study such as D:A:D is unable to address potential mechanisms for this association our data add to previous evidence of an independent effect of immunosuppression on CKD risk over and above that of AIDS events, HIV viremia and use of nephrotoxic ART [3-5]. However, in addition, these new data suggest an association with the duration of immunosuppression. Several studies have suggested the effect of immunosuppression on CKD may be related to persistent HIV-induced inflammation and coagulation activation [10, 11]. In a combined analysis from the ESPRIT, SILCAT and SMART trials higher levels of IL6 and D-dimer predicted serious non-AIDS events, and a Danish study found soluble CD163 levels, a marker of monocyte/ macrophage activation, was strongly associated with CKD [10, 11]. In the general HIV-negative population persistent inflammation has also been linked to faster decline in renal function [12]. ART has an overall beneficial effect on CKD compared to no ART, and interruptions in ART increase levels of both renal and inflammatory biomarkers, suggesting that ART-related improvement in immune function, viremia, inflammation and coagulation activation are key renal protective measures in this population [13, 14]. In START immediate ART initiation was further associated with a slightly higher median eGFR and less proteinuria compared to deferring ART [15]. All current evidence therefore points collectively towards avoiding long-lasting and severe immunosuppression by focusing on early ART initiation and ensuring high levels of ART compliance to reduce potential immunosuppression related renal risks.

We further described an intriguing dynamic suggesting that immunosuppression is associated with the greatest relative increase in CKD rates in persons at low estimated baseline risk of CKD i.e. those without comorbid conditions such as diabetes, hypertension or advanced age. It is worth noting, however, the low underlying rates of CKD in those at low estimated CKD risk. In an era where multimorbidity is increasingly common in the ageing population of PLWH it is crucial for clinicians to better understand which key factors to focus on depending on the individual risk profile to limited clinical outcomes such as CKD [3].

The association between CKD and immunosuppression could be biased by an increased monitoring frequency in those with low CD4 counts. While the frequency of measurement of CD4 count and eGFR were slightly increased at lower CD4 counts, the difference was small and the correlation between the number of annual eGFR measurements and current CD4 count was weak arguing against surveillance bias as a major contributor to the observed association.

Despite the large size and extensive follow-up in D:A:D, the relatively high median and nadir CD4 count after the 2004 baseline may explain the slightly stronger association with duration of severe immune suppression than with severity of immunosuppression.

In clinical practice, severity of immunosuppression may be an easier variable to use for risk stratification than duration of immunosuppression [3]. CD4 nadir, in adjusted analysis, displayed only marginally inferior model fit compared to duration of immunosuppression and could therefore be used as an alternative. We are unable to exclude residual confounding due to failure to fully adjust for unknown, unmeasured or incompletely assessed confounders. Most importantly we are limited by the lack of systematically collected data on

proteinuria, genetic predispositions to CKD, use of nephrotoxic treatments other than ART, CD8 count, substance abuse and a relatively low proportion of individuals with Black African ethnicity.

## Conclusions

The strongest association between incident CKD and immunosuppression was observed for the relative duration of severe immunosuppression. Risk of CKD was low when CD4 counts increased above 500 cells/mm<sup>3</sup>. The impact of immunosuppression was of greatest relative importance in persons at low estimated CKD risk, and less important at higher estimated CKD risk levels, suggesting more traditional renal risk factors dominated in high-risk individuals. These findings support ensuring good immune function through early ART initiation and high level of adherence also to minimise CKD risks in PLWH.

Accepted Manuscript

**Figure 1 Crude Incidence Rate of CKD per 1000 PYFU By Measures of  
Immunosuppression**

**Figure 2 CKD Incidence Rate Ratio and Percentage of Follow-up Time  
with CD4 Count  $\leq 200$  cells/mm<sup>3</sup> Stratified by the D:A:D CKD Risk Score**

Accepted Manuscript

## References

1. Schouten J, Wit FW, Stolte IG, et al. Cross-sectional comparison of the prevalence of age-associated comorbidities and their risk factors between HIV-infected and uninfected individuals: the AGEHIV cohort study. *Clinical infectious diseases : an official publication of the Infectious Diseases Society of America* 2014 Dec 15;59(12):1787-97.
2. Petersen N, Knudsen AD, Mocroft A, et al. Prevalence of impaired renal function in virologically suppressed people living with HIV compared with controls: the Copenhagen Comorbidity in HIV Infection (COCOMO) study. *HIV medicine* 2019 Nov;20(10):639-47.
3. Mocroft A, Lundgren JD, Ross M, et al. Development and validation of a risk score for chronic kidney disease in HIV infection using prospective cohort data from the D:A:D study. *PLoS medicine* 2015 Mar;12(3):e1001809.
4. Jotwani V, Li Y, Grunfeld C, Choi AI, Shlipak MG. Risk Factors for ESRD in HIV-Infected Individuals: Traditional and HIV-Related Factors. *American journal of kidney diseases : the official journal of the National Kidney Foundation* 2011 Dec 27.
5. Scherzer R, Gandhi M, Estrella MM, et al. A chronic kidney disease risk score to determine tenofovir safety in a prospective cohort of HIV-positive male veterans. *AIDS* 2014 Jun 1;28(9):1289-95.
6. Achhra AC, Mocroft A, Ross MJ, et al. Kidney disease in antiretroviral-naïve HIV-positive adults with high CD4 counts: prevalence and predictors of kidney disease at enrolment in the INSIGHT Strategic Timing of AntiRetroviral Treatment (START) trial. *HIV medicine* 2015 Apr;16 Suppl 1:55-63.
7. Friis-Moller N, Sabin CA, Weber R, et al. Combination antiretroviral therapy and the risk of myocardial infarction. *The New England journal of medicine* 2003 Nov 20;349(21):1993-2003.

8. Levey AS, Eckardt KU, Tsukamoto Y, et al. Definition and classification of chronic kidney disease: a position statement from Kidney Disease: Improving Global Outcomes (KDIGO). *Kidney international* 2005 Jun;67(6):2089-100.
9. Mocroft A, Furrer HJ, Miro JM, et al. The Incidence of AIDS-Defining Illnesses at a Current CD4 Count  $\geq 200$  Cells/ $\mu$ L in the Post-Combination Antiretroviral Therapy Era. *Clinical infectious diseases : an official publication of the Infectious Diseases Society of America* 2013 Aug 6.
10. Grund B, Baker JV, Deeks SG, et al. Relevance of Interleukin-6 and D-Dimer for Serious Non-AIDS Morbidity and Death among HIV-Positive Adults on Suppressive Antiretroviral Therapy. *PLoS one* 2016;11(5):e0155100.
11. Kirkegaard-Klitbo DM, Mejer N, Knudsen TB, et al. Soluble CD163 predicts incident chronic lung, kidney and liver disease in HIV infection. *AIDS* 2017 Apr 24;31(7):981-8.
12. Amdur RL, Feldman HI, Gupta J, et al. Inflammation and Progression of CKD: The CRIC Study. *Clinical journal of the American Society of Nephrology : CJASN* 2016 Sep 7;11(9):1546-56.
13. Longenecker CT, Kitch D, Sax PE, et al. Reductions in Plasma Cystatin C After Initiation of Antiretroviral Therapy Are Associated With Reductions in Inflammation: ACTG A5224s. *J Acquir Immune Defic Syndr* 2015 Jun 1;69(2):168-77.
14. Wyatt CM, Kitch D, Gupta SK, et al. Changes in proteinuria and albuminuria with initiation of antiretroviral therapy: data from a randomized trial comparing tenofovir disoproxil fumarate/emtricitabine versus abacavir/lamivudine. *J Acquir Immune Defic Syndr* 2014 Sep 1;67(1):36-44.
15. Achhra AC, Mocroft A, Ross M, et al. Impact of early versus deferred antiretroviral therapy on estimated glomerular filtration rate in HIV-positive individuals in the START trial. *Int J Antimicrob Agents* 2017 Sep;50(3):453-60.

## Footnote page

### Funding

The D:A:D study was supported by the Highly Active Antiretroviral Therapy Oversight Committee (HAART-OC), a collaborative committee with representation from academic institutions, the European Agency for the Evaluation of Medicinal Products, the United States Food and Drug Administration, the patient community, and pharmaceutical companies with licensed anti-HIV drugs in the European Union: AbbVie, Bristol-Myers Squibb, Gilead Sciences Inc., ViiV Healthcare, Merck & Co Inc. and Janssen Pharmaceuticals. Supported also by a grant [grant number DNRF126] from the Danish National Research Foundation (CHIP & PERSIMUNE); by a grant from the Dutch Ministry of Health, Welfare and Sport through the Center for Infectious Disease Control of the National Institute for Public Health and the Environment to Sticing HIV Monitoring (ATHENA); by a grant from the Agence nationale de recherches sur le sida et les hépatites virales [ANRS, Action Coordonnée no.7, Cohortes] to the Aquitaine Cohort; The Australian HIV Observational Database (AHOD) is funded as part of the Asia Pacific HIV Observational Database, a program of The Foundation for AIDS Research, amfAR, and is supported in part by a grant from the U.S. National Institutes of Health's National Institute of Allergy and Infectious Diseases (NIAID) [grant number U01-AI069907] and by unconditional grants from Merck Sharp & Dohme; Gilead Sciences; Bristol-Myers Squibb; Boehringer Ingelheim; Janssen-Cilag; ViiV Healthcare. The Kirby Institute is funded by The Australian Government Department of Health and Ageing, and is affiliated with the Faculty of Medicine, The University of New South Wales; by grants from the Fondo de Investigación Sanitaria [grant number FIS 99/0887] and Fundación para la Investigación y la Prevención del SIDA en España [grant number FIPSE 3171/00], to the Barcelona Antiretroviral Surveillance Study (BASS); by the National Institute of Allergy and Infectious Diseases, National Institutes of Health [grants number 5U01AI042170-10 , 5U01AI046362-03], to the Terry Bein Community Programs for



Clinical Research on AIDS (CPCRA); by primary funding provided by the European Union's Seventh Framework Programme for research, technological development and demonstration under EuroCoord grant agreement n° 260694 and unrestricted grants by Bristol-Myers Squibb, Janssen R&D, Merck and Co. Inc., Pfizer Inc., GlaxoSmithKline LLC, (the participation of centres from Switzerland is supported by The Swiss National Science Foundation (Grant 108787)) to the EuroSIDA study; by unrestricted educational grants of AbbVie, Bristol-Myers Squibb, Gilead Sciences, GlaxoSmithKline, Pfizer, Janssen Pharmaceuticals to the Italian Cohort Naive to Antiretrovirals (The ICONA Foundation); and by a grant from the Swiss National Science Foundation (grant #148522) to the Swiss HIV Cohort Study (SHCS). The content of this publication is solely the responsibility of the authors and does not necessarily represent the official views of any of the institutions mentioned above.

No funding bodies had any role in study design, data collection and analysis, decision to publish, or preparation of the manuscript.

### **Acknowledgements**

**D:A:D participating cohorts:** AHOD (Australia), Aquitaine (France), Athena (The Netherlands), BASS (Spain), CPCRA (USA), EuroSIDA (multi-national), **HivBivus** (Sweden), ICONA (Italy), Nice (France), SHCS (Switzerland) and St. Pierre (Belgium)

**D:A:D Steering Committee:** Names marked with \*, Chair with  $\phi$

**Cohort PIs:** W El-Sadr\* (CPCRA), G Calvo\* (BASS), F Bonnet and F Dabis\* (Aquitaine), O Kirk\* and A Mocroft\* (EuroSIDA), M Law\* (AHOD), A d'Arminio Monforte\* (ICONA), L Morfeldt\* (HivBIVUS), C Pradier\* (Nice), P Reiss\* (ATHENA), R Weber\* (SHCS), S De Wit\* (St. Pierre)

**Cohort coordinators and data managers:** A Lind-Thomsen (coordinator), R Salbøl Brandt, M Hillebrecht, S Zaheri, FWNM Wit (ATHENA), A Scherrer, F Schöni-Affolter, M

Rickenbach (SHCS), A Tavelli, I Fanti (ICONA), O Leleux, J Mourali, F Le Marec, E Boerg (Aquitaine), E Thulin, A Sundström (HIVBIVUS), G Bartsch, G Thompsen (CPCRA), C Necsoi, M Delforge (St. Pierre), E Fontas, C Caissotti, K Dollet (Nice), S Mateu, F Torres (BASS), K Petoumenos, A Blance, R Huang, R Pühr (AHOD), K Grønberg Laut, D Kristensen (EuroSIDA)

**Statisticians:** CA Sabin\*, AN Phillips\*, DA Kamara, CJ Smith, A Mcroft\*

**D:A:D coordinating office:** CI Hatleberg, L Ryom\*, A Lind-Thomsen, RS Brandt, D Raben, C Matthews, A Bojesen, AL Grevsen, JD Lundgren\* $\phi$

**Member of the D:A:D Oversight Committee:** B Powderly\*, N Shortman\*, C Moecklinghoff\*, G Reilly\*, X Franquet\*

**D:A:D working group experts:**

**Kidney:** L Ryom\*, A Mcroft\*, O Kirk\*, P Reiss\*, C Smit, M Ross, CA Fux, P Morlat, E Fontas, DA Kamara, CJ Smith, JD Lundgren\* $\phi$

**Mortality:** CJ Smith, L Ryom\*, CI Hatleberg, AN Phillips\*, R Weber\*, P Morlat, C Pradier\*, P Reiss\*, FWNM Wit, N Friis-Møller, J Kowalska, JD Lundgren\* $\phi$

**Cancer:** CA Sabin\*, L Ryom\*, CI Hatleberg, M Law\*, A d'Arminio Monforte\*, F Dabis\*, F Bonnet\*, P Reiss\*, FWNM Wit, CJ Smith, DA Kamara, J Bohlius, M Bower, G Fätkenheuer, A Grulich, JD Lundgren\* $\phi$

**External endpoint reviewers:** A Sjøel (CVD), P Meidahl (oncology), JS Iversen (nephrology)

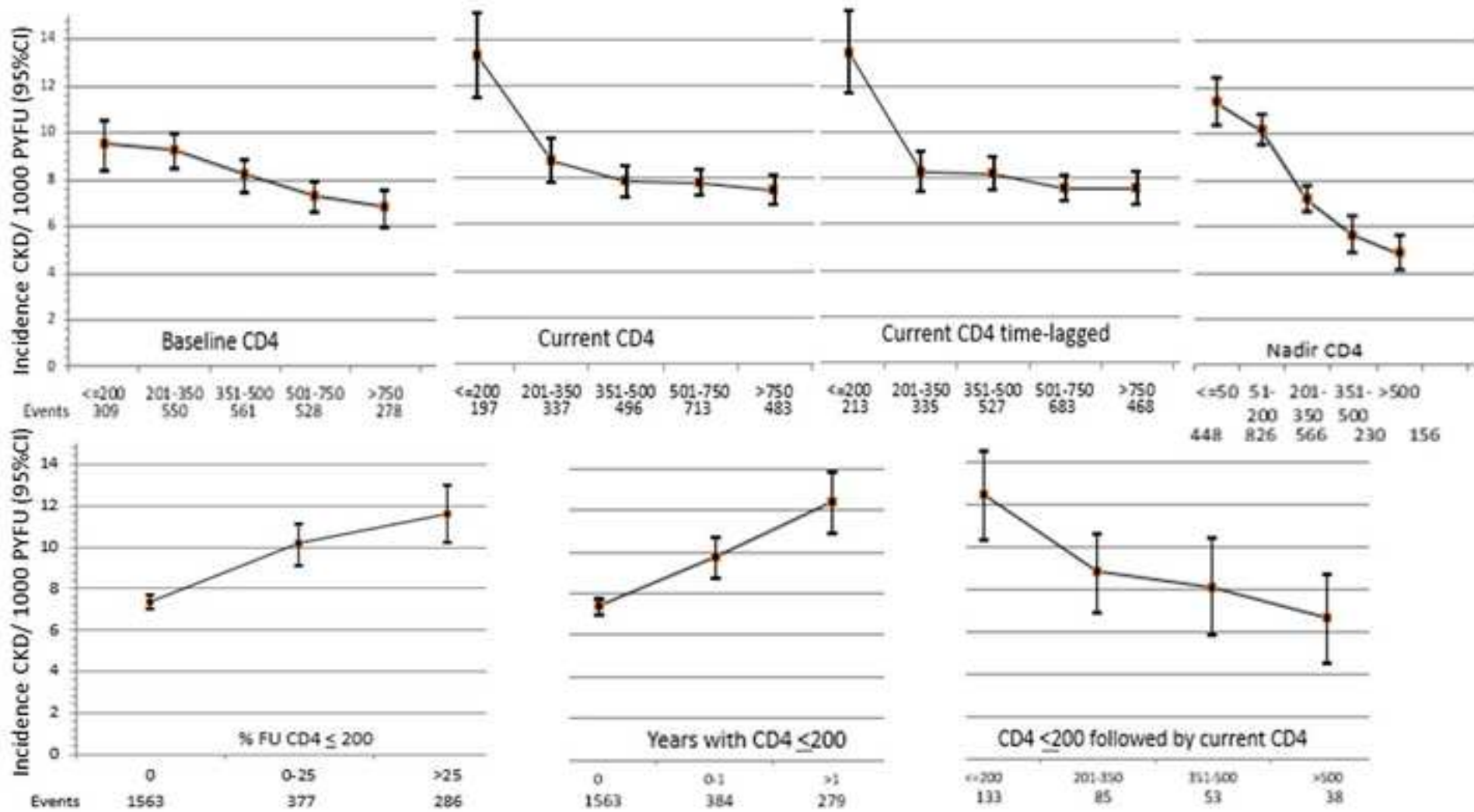
For a complete list of the members of the 11 participating cohorts, please see Appendix 1.

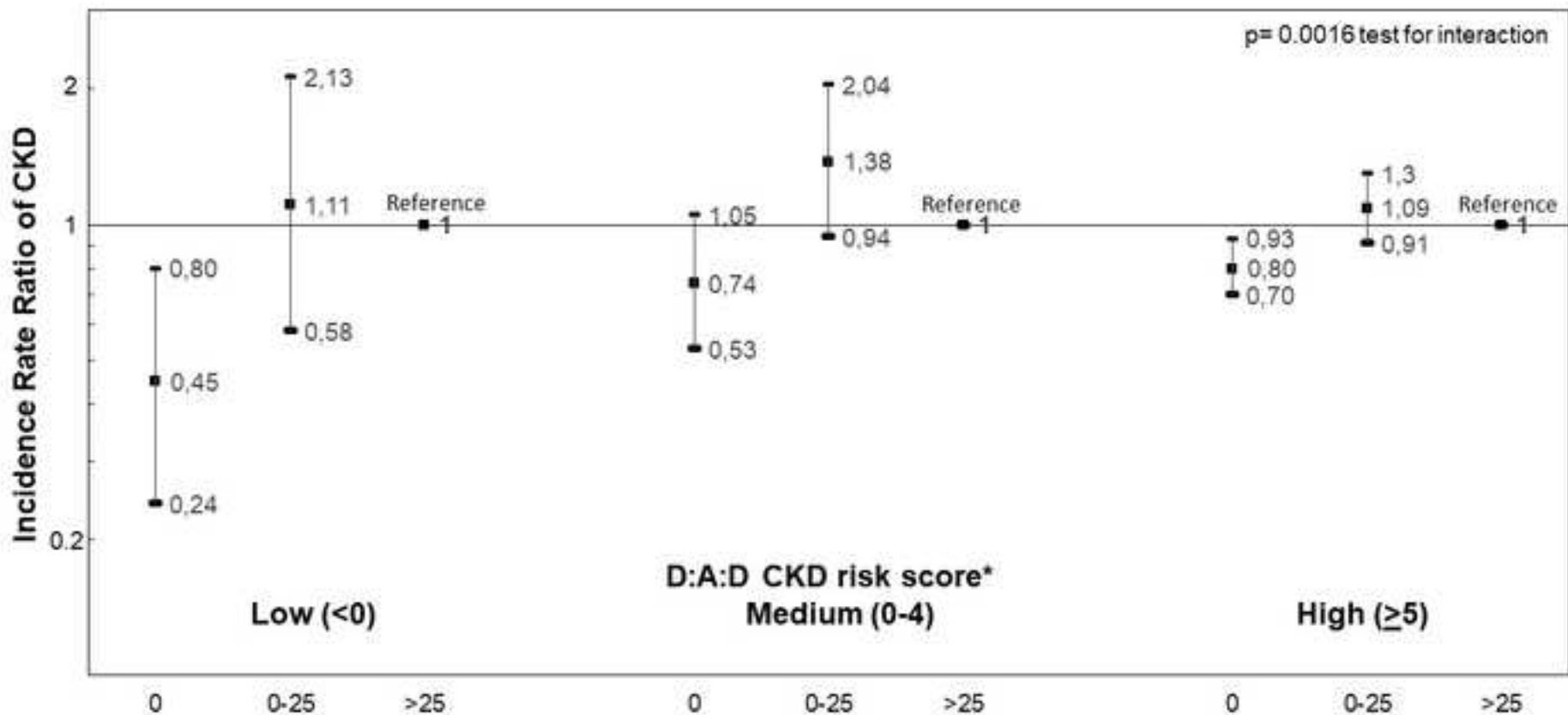
## Conflicts of Interests

L. Ryom, J.D. Lundgren, M. Ross, E. Fontas, W. EL-Sadr, S. De Wit and CI Hatleberg have reported no conflicts of interest. A. Mocroft has received consultancy fees/honoraria/speaker fees from BMS, Pfizer, Merck, BI, Gilead Sciences and Eiland and Bonin. P. Reiss has served as a scientific advisor to Bristol-Myers Squibb, Gilead Sciences, Grupo Ferrer, GlaxoSmithKline, Janssen Pharmaceuticals, Merck & Co, Inc, and ViiV Healthcare. He has served on data and safety monitoring boards and endpoint adjudication committees for Janssen Pharmaceuticals and his institution has received honoraria for speaking engagements at scientific conferences from Bristol-Myers Squibb, Gilead Sciences, Inc, GlaxoSmithKline. He has received research support from Gilead Sciences, ViiV Healthcare, Merck & Co, Inc, Janssen Pharmaceuticals, Bristol-Myers Squibb, Abbott, and Boehringer Ingelheim Pharmaceuticals. O. Kirk had prior/present board membership at ViiV Healthcare, Gilead Sciences and Merck, received payment for lectures and/or for development of educational presentations from Abbott, Gilead Sciences and Tibotec and had travel/accommodations/meeting expenses paid by Abbott, BMS, Gilead Sciences, Merck and ViiV Healthcare. M. Law has received research grants from Boehringer Ingelheim, Bristol Myer Squibb, Gilead, GlaxoSmithKline, Janssen-Cilag Pty Ltd, Merck Sharp &

Dohme, Pfizer and Roche. C.A. Fux is an advisory board member for Gilead Sciences and MSD, has pending grants from Gilead Sciences and Abbott and received payment for lectures by Gilead HIV and the body. P. Morlat has received honorarium and support for travel to meeting from Gilead Sciences, ViiV Healthcare and Merck. C. Smith has a pending grant from Bristol-Myers Squibb and received payment for development of educational presentations by Gilead Sciences. A d'Arminio Monforte has past board membership at Abbvie, Bristol-Myers Squibb, Gilead Sciences, Janssen Pharmaceuticals and Merck. A. Phillips received personal fees from Gilead Sciences, Abbvie, GlaxoSmithKline Vaccines and grants from Bristol-Myers Squibb. C. Sabin received personal fees from Gilead Sciences, Bristol-Myers Squibb, Janssen Pharmaceuticals, Abbott Pharmaceuticals, and ViiV Healthcare

Accepted Manuscript





\* D:A:D CKD risk-score =

- + 4 Age 35-50      + 6 Baseline eGFR < 70
- + 7 Age 50-60      - 6 Baseline eGFR > 90
- + 10 Age > 60      + 1 Female
- + 1 Hypertension + 1 Nadir CD4 < 200

% Follow-up Time with CD4 count  $\leq$  200/mm<sup>3</sup>

- + 2 IDU
- + 1 HCV-Ab pos
- + 1 Prior CVD
- + 2 Diabetes