

# 1 Developing biodiversity indicators for African birds

2

3 S. R. Wotton<sup>1</sup>, M. A. Eaton<sup>1</sup>, D. Sheehan<sup>2</sup>, F. Barasa Munyekenye<sup>3</sup>, I. J. Burfield<sup>4</sup>, S. H. M.

4 Butchart<sup>4,5</sup>, K. Moleofi<sup>6</sup>, D. Nalwanga-Wabwire<sup>7</sup>, P. K. Ndong'ang'a<sup>8</sup>, D. Pomeroy<sup>9</sup>, K. J.

5 Senyatso<sup>6</sup> and R. D. Gregory<sup>1,10</sup>.

6

7

8 <sup>1</sup>RSPB Centre for Conservation Science, The Lodge, Sandy, Bedfordshire SG19 2DL, UK. <sup>2</sup>White

9 Cottage, Stretford, Shropshire, SY7 8DE. <sup>3</sup>Nature Kenya, P.O. Box 44486, Museum Hill Road,

10 Nairobi, Kenya. <sup>4</sup>BirdLife International, The David Attenborough Building, Pembroke Street,

11 Cambridge, CB2 3QZ, UK. <sup>5</sup>Department of Zoology, University of Cambridge, Downing Street,

12 Cambridge CB2 3EJ, UK. <sup>6</sup>BirdLife Botswana, P. O. Box 26691, Kgale View, Gaborone,

13 Botswana. <sup>7</sup>Nature Uganda, P. O. Box 27034, Katalima Crescent, Kampala, Uganda. <sup>8</sup>BirdLife

14 International, Africa Partnership Secretariat, P. O. Box 3502 – 00100, Nairobi, Kenya.

15 <sup>9</sup>Department of Environment Management, Makerere University, P. O. Box 7298 Kampala,

16 Uganda. <sup>10</sup>Centre for Biodiversity & Environment Research, Department of Genetics, Evolution

17 and Environment, University College London, Darwin Building, Gower Street, London, WC1E

18 6BT, UK.

19

## 20 **Corresponding author**

21 Email: [simon.wotton@rspb.org.uk](mailto:simon.wotton@rspb.org.uk)

## 22 **Abstract**

23 Biodiversity indicators are essential for monitoring the impacts of pressures on the state of  
24 nature, determining the effectiveness of policy responses, and tracking progress towards  
25 biodiversity targets and sustainable development goals. Indicators based on trends in the  
26 abundance of birds are widely used for these purposes in Europe and have been identified as  
27 priorities for development elsewhere. To facilitate this, we established bird population  
28 monitoring schemes in three African countries, built on citizen science approaches used in  
29 Europe, aiming to monitor population trends in common and widespread species. We recorded  
30 >500 bird species from c450 2-km transects in Botswana, >750 species from c120 transects in  
31 Uganda, and >630 species from c90 transects in Kenya. Provisional Wild Bird Indices show a  
32 strong increase in bird populations in Botswana and a small decrease in Uganda. We also show  
33 comparisons between trends of habitat generalists and specialists, of birds within and outside  
34 protected areas, and between Afro-Palaearctic migrants and resident birds. Challenges  
35 encountered included recruiting, training and retaining volunteer surveyors, and securing long-  
36 term funding. We show, however, that with technical support and modest investment  
37 (~US\$30,000 per scheme per year), meaningful biodiversity indicators can be generated and  
38 used in African countries. Sustained resourcing for the existing schemes, and replication  
39 elsewhere, would represent a cost-effective way to improve our understanding of biodiversity  
40 trends globally, and measure progress towards environmental goals.

41

## 42 **Keywords**

43 land bird monitoring, national and international reporting, policy relevant, TRIM, wild bird  
44 index, population abundance, Aichi Targets.

45

## 46 **Introduction**

47 Countries need to conserve biodiversity and utilise natural resources wisely if they are to avoid,  
48 halt and reverse ongoing environmental degradation (Stephenson et al. 2016). To do so  
49 effectively, governments and their agencies need robust environmental data to make informed  
50 decisions. Yet in Africa, as elsewhere, that information is often lacking (Stephenson et al. 2016;  
51 Schmeller *et al.* 2017), partly due to insufficient support, investment and expertise in  
52 biodiversity monitoring. In this paper, we describe citizen-science based monitoring schemes  
53 for birds in three African countries that are beginning to deliver policy-relevant results.

54       Birds have many characteristics that make them useful indicators of environmental change:  
55 they occur in nearly all habitats, often reflect trends in other taxa, are moderately sensitive to  
56 environmental change, and our level of knowledge about their numbers, ranges and ecology is  
57 relatively high (Furness & Greenwood 1993; Gregory et al. 2005). Work in Europe and North  
58 America has shown that Wild Bird Indices (hereafter WBIs), combining trend data for multiple  
59 species, can be used to inform environmental and conservation decision-making and improve  
60 the management of natural resources. Specifically, WBIs are composite indicators describing the  
61 average trends in relative abundance of native species with each species trend weighted equally  
62 in the index (Gregory et al. 2005). Such composite indicators provide a simple way of  
63 measuring and communicating progress towards biodiversity targets and can communicate  
64 information on anthropogenic pressures, such as habitat change loss and climate change

65 (Stephens et al. 2016). Environmental degradation of this kind may have profound  
66 consequences for the lives of people by reducing natural resources and the ecosystem services  
67 upon which they depend, and thus WBIs are being used in many countries, particularly in  
68 Europe. However, such indices must be interpreted with care as many bird species are mobile  
69 and respond to environmental changes over large and often distinct areas, and they may use the  
70 environment in a different manner to other taxa.

71 Programmes to monitor populations of breeding birds, covering predominantly terrestrial  
72 habitats, have become established in many European and North American countries since the  
73 1960s. Across Europe, there are currently 39 national monitoring schemes and the Pan-  
74 European Common Bird Monitoring Scheme (PECBMS, <http://www.ebcc.info/pecbm.html>) uses  
75 species indices from annual breeding bird surveys in 28 countries to produce European and  
76 European Union (EU) bird indices. These cover around 170 species, with the objective of using  
77 birds as indicators of the state of nature across Europe. The supranational multi-species  
78 indicators have been adopted as measures of progress towards the EU's biodiversity goals,  
79 including Structural, Headline and Sustainable Development Indicators  
80 ([http://ec.europa.eu/environment/nature/biodiversity/strategy/index\\_en.htm](http://ec.europa.eu/environment/nature/biodiversity/strategy/index_en.htm)).

81 Such indices are relevant to the Convention on Biological Diversity's (CBD) Strategic Plan  
82 for Biodiversity, specifically Strategic Goals B (reduce the direct pressures on biodiversity and  
83 promote sustainable use) and C (improve the status of biodiversity by safeguarding ecosystems,  
84 species and genetic diversity), and to the Aichi Biodiversity Targets used to measure progress  
85 towards these goals (Targets 5, 7 and 12; [www.cbd.int/sp/targets/](http://www.cbd.int/sp/targets/)), as well as to United Nations'

86 Sustainable Development Goal 15 (Butchart et al. 2010; Secretariat of the Convention on  
87 Biological Diversity 2014; Tittensor et al. 2014).

88 The WBI concept is being applied elsewhere, often in '*State of the Nation's Birds*' reports, for  
89 example, in North America (North American Bird Conservation Initiative, U.S. Committee  
90 2014), Australia (O'Connor et al. 2015), and Uganda (Nature Uganda 2015). Although some  
91 land bird monitoring schemes are well developed and are becoming established elsewhere (e.g.  
92 Australia, China, India, Japan, South Korea, Taiwan), few other schemes exist, especially in the  
93 tropics where biodiversity richness is at its highest.

94 Following a review of the capacity of the African Partner organisations of BirdLife  
95 International in 2010, monitoring schemes were initiated in Botswana, and Kenya, and revised  
96 in Uganda. These countries were selected on the basis of the enthusiasm of national partners,  
97 volunteer capacity and a tradition of bird monitoring to expand upon. Here, we describe the  
98 progress of these schemes and illustrate what can be achieved in Africa in terms of biodiversity  
99 monitoring based on citizen science (public engagement in scientific research activities;  
100 European Commission 2014). The indices we present are provisional because the time series  
101 analysis is short, and more work is needed to refine and interpret the trends, but their potential  
102 is clear.

103

## 104 **Methods**

105 The establishment of the monitoring schemes is described in Supplementary Information S1,  
106 including details on field methods, sampling design and volunteer engagement. A semi-  
107 random sampling approach was preferred, owing to the low availability of observers, as it

108 encourages participation in circumstances of uneven participant distribution. This is based on  
109 similar approaches that have been employed in Europe (*e.g.* Bulgaria). Line or point count  
110 transects were both considered as suitable survey techniques (Senyatso et al. 2008). The final  
111 decision on which technique to use in each country was based on local conditions and existing  
112 experience. In Botswana surveys involved walking a 2-km transect, undertaking a 5-minute  
113 count of all birds seen or heard at 11 points spaced every 200m. Surveys were undertaken twice  
114 a year, in February and November. In Uganda, a line transect method was used, recording all  
115 birds seen or heard along a 2-km transect, divided into 200-m sections. Surveys were  
116 undertaken twice a year, in January/February and July/August. The scheme in Kenya followed  
117 a similar approach to Botswana, with surveys undertaken twice a year, in February and August.  
118 The differing timings reflect the different peak times for the detection of resident and migrant  
119 species.

120

## 121 Species trends and indicator species selection

122 We conducted trend and indicator analyses with data from Botswana and Uganda, but not  
123 Kenya, as too few transects were surveyed in the first three years of the scheme (Table 1). We  
124 employed a standardised approach to identify reliable species trends. For many species, the  
125 frequency and number of individual birds recorded from the surveys meant that there was  
126 insufficient data to generate robust indices. For Botswana and Uganda, the most widespread  
127 species were selected by the mean number of occupied transects per annum. In Botswana,  
128 species recorded in  $\geq 20$  transects per year were selected, except for any species for which year-  
129 to-year indices increased or decreased by a magnitude greater than 10, or where the standard

130 error of the multiplicative slope index was greater than 0.5 (following  
131 <http://www.ebcc.info/index.php?ID=614>). In Uganda, although fewer transects have been  
132 surveyed annually, there was a greater species abundance per tetrad. Here species recorded in  
133  $\geq 15$  transects per year were selected, with the same caveats as defined above. This selection  
134 process allows for widespread species that are typically recorded in low numbers (e.g. Cape  
135 crombec *Sylvietta rufescens* in Botswana and African thrush *Turdus pelios* in Uganda) to be  
136 included, as well as those that are typically flocking or erratic in movements (e.g. gamebirds,  
137 marabou *Leptoptilos crumeniferus* and red-billed quelea *Quelea quelea*), which may only be  
138 recorded in a small proportion of transects but in large numbers. On this basis, we report  
139 trends for 95 and 78 species in Botswana and Uganda respectively.

140 The Botswana transects were classified in terms of habitats as primarily grassland, savanna  
141 or (arid broadleaf) woodland, and the Uganda transects as primarily farmland (more intensive  
142 farming practices here meant that it was possible to define farmland as a separate category),  
143 grassland, (tropical) forest, savanna, or urban (although too few urban transects have so far  
144 been surveyed to enable analysis, and farmland and grassland transects were combined due to  
145 low sample sizes). These transect classifications were made by the respective scheme organisers  
146 using land cover maps.

147 We were also interested in understanding whether the trends of habitat specialists might  
148 differ from generalists, as has been reported elsewhere (Gregory et al. 2005). To do this, we  
149 used Juillard et al.'s (2006) Species Specialisation Index (SSI) to determine which species with  
150 reliable trends were habitat generalists or specialists. The SSI measures the variability of bird

151 densities across habitat classes, using the coefficient of variation (standard deviation/average  
152 density).

153 We were also interested in the fate of Afro-Palaeartic migratory birds wintering in Africa,  
154 given the increasing conservation concern for this group on their breeding grounds (Vickery et  
155 al. 2014). Although to date 45 European migrant species have been recorded in the Botswana  
156 scheme and 57 species in the Uganda scheme, only six species in Botswana (European bee-eater  
157 *Merops apiaster*, red-backed shrike *Lanius collurio*, lesser grey shrike *Lanius minor*, barn swallow  
158 *Hirundo rustica*, willow warbler *Phylloscopus trochilus* and spotted flycatcher *Muscicapa striata*)  
159 and six in Uganda (European bee-eater, sand martin *Riparia riparia*, barn swallow, willow  
160 warbler, whinchat *Saxicola rubetra*, and yellow wagtail *Motacilla flava*), have been recorded in  
161 sufficient numbers to enable the calculation of reliable species trends.

162 Finally, the importance of Protected Areas (PAs) for biodiversity conservation has been the  
163 subject of much research (e.g. Chape et al. 2005; Gaston et al. 2008; Beresford et al. 2013), so we  
164 compared composite bird trends from our surveys within and outside PAs. To do so, transects  
165 in each country were identified as being within PAs or not, and a similar approach to the initial  
166 species selection was used (using the same statistical conditions for species inclusion). In each  
167 country, only species for which we had suitable trends for both within and outside PAs were  
168 included. For Botswana, species were selected that were recorded in  $\geq 20$  transects per year,  
169 within and outside PAs, resulting in 43 species for which we were able to calculate trends. For  
170 Uganda, to ensure that sufficient species were included, species were selected that were  
171 recorded in  $\geq 14$  transects per year, both within and outside PAs, resulting in 12 species.



172 Species composition, by country and indicator, is summarised in Supplementary  
173 Information S2.

174

## 175 Data analysis

176 Species trends were produced using the TRIM software programme (version 2.53) for  
177 analysing time-series of counts with missing observations using Poisson regression (van Strien  
178 et al. 2004). Counts were modelled as a function of site and year effects. Specifically, we used a  
179 TRIM change-point model with a change-point in every year, correcting for autocorrelation and  
180 over-dispersion. The multi-species WBIs were produced using the MSI tool R-script, which  
181 accounts for sampling error in the calculation of such indicators with bootstrapped confidence  
182 limits and tests for significance based on the Monte Carlo simulation (Soldaat et al. 2017). The  
183 script uses the species annual indices and standard errors from the TRIM output. Here, given  
184 the short time periods involved, we report linear trends only. For each indicator, 10,000  
185 simulations were specified, the index set to 100 and the standard error set to zero in the first  
186 year. We use standard trend classifications and significance levels from the TRIM output and  
187 MSI tool output (Table S1).

188

## 189 Results

### 190 Coverage

191 For each country, transect coverage is summarised in Table 1. In Botswana, over 350 volunteers  
192 were registered and 170 have undertaken a count. Reliable species trends were calculated for 95  
193 bird species (S2, S3). In Uganda, there were c100 regular participants, with 120 people

194 participating in total. Reliable species trends were calculated for 78 bird species (S2). In Kenya,  
195 160 people have participated in the count scheme so far, but it is too early to calculate trends.

196

### 197 Wild Bird Indices

198 In Botswana, the WBI has shown a significant strong increase of 65% between 2010 and 2015  
199 (Fig. 4, Table 2), with 47 of the 95 species showing a significant increase, and only two species  
200 showing a significant decline (Table 2). In Uganda, the overall trend between 2009 and 2015 has  
201 been stable, although showing a small recent decline, with 15 of the 78 species showing a  
202 significant increase and 21 species showing a significant decline (Fig. 4, Table 2). This suggests  
203 tentatively that common bird populations are faring better in Botswana than Uganda.  
204 However, we stress that the monitoring period is short and the trend analysis is preliminary  
205 and relates to the more abundant species.

206 In Botswana, the most frequently recorded species was ring-necked dove *Streptopelia capicola*  
207 (present in 84% of transect counts), although the most abundant species was red-billed quelea  
208 (an overall count of at least 40,250 from 483 records between 2010 and 2015). In Uganda,  
209 common bulbul *Pycnonotus barbatus* was the most abundant (an overall count of >11,000  
210 individuals from 713 records) and most frequently recorded species, in 91% of transects. Trend  
211 graphs for each species in the Botswana and Uganda WBIs are shown in S3.

212

### 213 Habitat generalists and specialists

214 We defined habitat specialists as those with an SSI >0.33 for Botswana and >0.40 for Uganda (to  
215 reflect the number of species and the distribution of values), which meant 34 and 21 species

216 were classed as 'generalists', respectively. In order to allocate each of the specialists to a broad  
217 habitat, we used habitat-specific relative abundance (Julliard pers. comm.), as abundance  
218  $i$ /overall mean abundance, within habitat  $i$ . Across the three broad habitat categories in  
219 Botswana and Uganda, the habitat with the highest habitat specific relative abundance score  
220 was selected as the 'preferred' habitat for each species. In Botswana, we identified 24 grassland,  
221 16 savanna and 21 woodland specialists, and in Uganda, 17 farmland/grassland, 20 forest and  
222 20 savanna specialists (see S2).

223 Habitat generalists in Botswana showed a significant strong increase between 2010 and  
224 2015, with 20 of the 34 species showing a significant increase (Table 2, Fig. 5a). In Uganda, the  
225 trend was stable between 2009 and 2015, with four of the 21 species showing a significant  
226 increase, and five a significant decline (Table 2, Fig. 5b).

227 In Botswana, the indicators for grassland and woodland specialists showed significant  
228 strong increases between 2010 and 2015, with the trend for savanna specialists showing a  
229 significant moderate increase (Table 2). Of the grassland and woodland specialists, 50% and  
230 57% respectively showed a significant increase, compared to just 19% of the savanna specialists  
231 (Table 2).

232 In Uganda, the indicator for farmland/grassland specialists showed a significant moderate  
233 increase (+17%) with 35% of species showing a significant increase and 18% a significant decline  
234 (Table 2). The indicator for forest specialists showed a significant moderate decline (-39%), with  
235 45% of species showing a significant decline and none showing an increase. The indicator for  
236 the 20 savanna specialists in Uganda was stable.

237

## 238 Afro-Palearctic migrants

239 The overall trends of Afro-Palearctic migrants in Botswana and Uganda showed a significant  
240 moderate increase (Table 2, Fig. 6), with three species in Botswana (European bee-eater, barn  
241 swallow and spotted flycatcher) and four species in Uganda (sand martin, barn swallow, willow  
242 warbler and whinchat) showing a significant increase. Only yellow wagtail in Uganda showed  
243 a significant decline.

244

## 245 Within and outside Protected Areas

246 In Botswana, the trend within PAs was a significant moderate increase (+42%), that outside was  
247 a significant strong increase (+80%, Table 2, Figure 7). In Uganda, the trend within PAs was  
248 stable, but the trend outside was a moderate decline (-19%, Table 2).

249

## 250 Discussion

251 Robust environmental monitoring is essential in supporting global biodiversity reporting  
252 mechanisms (Secretariat of the Convention on Biological Diversity 2014; Butchart et al. 2010;  
253 Tittensor et al. 2014). It is encouraging that Botswana, Uganda and Kenya now have structured  
254 bird monitoring programmes in place to help inform their National Biodiversity Strategies and  
255 Action Plans under the CBD, and report against the Aichi Targets and Sustainable Development  
256 Goals. We hope that this will encourage other countries to invest in well-designed, citizen  
257 science-based biodiversity monitoring for land birds and other taxa, as highlighted by  
258 Schmeller et al. (2017), complementing other biodiversity monitoring schemes that have been  
259 established in Africa in recent years, such as the BIOTA project (Jürgens et al. 2011) and the

260 Southern African Birds Atlas Project (<http://sabap2.adu.org.za/>). The power of the information  
261 collected can only grow as more countries share common standards and knowledge, and share  
262 their data outputs – as we have seen in Europe and North America, where cooperation has  
263 formed the basis for important research (Pe'er et al. 2014; Inger et al. 2015; Gamero et al. 2016;  
264 Jørgensen et al. 2016; Stephens et al. 2016). We echo Stephenson et al. (2016) in calling on  
265 African government departments to work collaboratively to: enhance resources for monitoring  
266 and develop partnerships with donors; build capacity for data collection; improve co-ordination  
267 and collaboration for biodiversity data management; and produce and use more data-derived  
268 products that encourage data use, especially assessments that demonstrate the importance of  
269 biodiversity to economies and wellbeing.

270 We have shown how it is possible to establish bird monitoring schemes in Africa and we  
271 present the first provisional policy-relevant WBIs for Botswana and Uganda, and anticipate the  
272 same will be feasible for Kenya soon. Although the schemes are too young to assess changes  
273 over the long-term, the results suggest some emerging patterns that will bear careful scrutiny,  
274 and raise methodological issues for the schemes too. They also point to a series of common  
275 challenges that biodiversity monitoring programmes face and to some important considerations  
276 in terms of good practice. Like many long-term monitoring programmes, the schemes described  
277 here would be impossible to maintain without a citizen science approach, which is increasingly  
278 prevalent in global research (e.g. Cooper et al. 2014). While the use of volunteer scientists is not  
279 without problems (e.g. Conrad & Hilchey 2011, Crall et al. 2014), and must be accompanied by  
280 adequate scientific oversight (e.g. training, supervision and data verification (Buesching et al.

281 2014)), we believe that our work shows that this approach could be usefully extended  
282 elsewhere.

283

#### 284 Developing the monitoring schemes

285 Developing motivated and skilled citizen scientists is key to the success of volunteer-based  
286 schemes. One challenge is a lack of tradition and culture in bird watching and systematic  
287 recording in Africa, as in other parts of the world.

288 In Botswana and Uganda, transects are generally closer to urban areas, as expected given  
289 the semi-random site selection (Figs. 1, 3), with some large areas, particularly in Uganda, that  
290 are so far devoid of any transects. Yet the stratified nature of transect selection has ensured that  
291 broad habitats have been represented and there has been a reasonable split in terms of transects  
292 located within PAs and in the wider landscape (Table S2). A future goal should be to target  
293 wider geographical coverage, as well as understanding to what degree the current sampling  
294 selection is representative of the land cover in each country, to inform targeted sampling and  
295 the development of stratified analysis to reduce bias.

296 A key issue is how each scheme can be funded over the longer term. It is crucial for each  
297 partner to secure a reliable source of in-country funding for the long-term operation and success  
298 of the programmes. This remains a challenge. We show that with technical support and a  
299 modest investment (~US\$30,000 (20,000-40,000)) per year, meaningful biodiversity indicators  
300 can be produced to fulfill national, regional and international reporting obligations. Basic  
301 resources are needed to cover the full-time post of a national scheme organiser, printing and

302 distributing survey forms, data and office costs, training workshops, the costs of promotional  
303 and training materials, and newsletters to feed back results to surveyors and other stakeholders.

304

### 305 Species trends and indicators

306 Although the African schemes cover only six to seven years, the results show a number of  
307 species with significant trends, both increasing and declining (Table 2). Our trend analysis is  
308 reasonably robust and is well established. However, the degree to which we might be able to  
309 generalize these findings is dependent on the sampling strategy, and the data are, for a number  
310 of practical reasons, spatially biased. We plan to investigate this in more detail and modify  
311 sampling and analysis accordingly.

312 That said, our analyses suggest differing trends in land bird populations in Botswana and  
313 Uganda that merits further investigation (Fig. 4). We found relatively little difference in species  
314 trends by major habitat, although the decline of forest specialist birds in Uganda is noteworthy  
315 (Fig. 5b). There were also differences in species trends in the PAs of each country (Fig. 7).  
316 Rather surprisingly, in Botswana, the indicators suggest that common bird populations are  
317 faring better outside of PAs (Table 2). In Uganda, the opposite was true (Fig. 7), as might be  
318 expected with presumed better habitat quality and conservation actions inside PAs. In time,  
319 these indices will be useful in assessing the performance of PAs in each country, at least in  
320 respect of these common bird populations and as part of a wider assessment. A study of the  
321 impact of the PA network in Europe concluded that these sites supported higher abundances of  
322 many common bird species (especially habitat specialists), but that the network was established  
323 too recently to assess its influence on population trends (Pellissier et al. 2013).

324

325 Policy use of the indicators

326 Bird monitoring data from Botswana, Kenya and Uganda will contribute usefully to wider  
327 biodiversity monitoring and reporting, and the *State of Uganda's Birds 2014* report is a good  
328 example of how this can be achieved (Nature Uganda 2015).

329 Data from the schemes have been made available to, and are already being used by,  
330 Government departments and agencies in each of the countries. In Botswana, data have been  
331 used to assist the Ministry of Agriculture to assess the distribution and abundance of red-billed  
332 quelea; an agricultural pest for which preventative measures are employed by governments to  
333 counter crop loss (Elliott 1990). In Kenya, house crow *Corvus splendens* abundance and  
334 distribution data are being used to advocate the control of this invasive species with the Kenya  
335 Pharmacy and Poisons Board. In Uganda, data from the National Biodiversity Data Bank  
336 (NBDB), including the scheme data, are being used in relation to Environmental and Social  
337 Impact Assessments for the oil industry. With longer-term datasets, it will be possible to look at  
338 bird populations in relation to other environmental factors, including land use pressures,  
339 climate change and PA management regimes. The indicators will also be useful for reporting  
340 against Aichi Targets 5 ('by 2020, the rate of loss of all natural habitats, including forests, is at  
341 least halved and where feasible brought close to zero, and degradation and fragmentation is  
342 significantly reduced'), 7 (by 2020 areas under agriculture, aquaculture and forestry are  
343 managed sustainably, ensuring conservation of biodiversity), and 12 ('by 2020 the extinction of  
344 known threatened species has been prevented and their conservation status, particularly of  
345 those most in decline, has been improved and sustained), and Sustainable Development Goal 15



346 ('sustainably manage forests, combat desertification, halt and reverse land degradation, halt  
347 biodiversity loss'). Hence they are relevant to the CBD's Global Biodiversity Outlook, UNEP's  
348 Global Environment Outlook, and the Intergovernmental Science-Policy Platform on  
349 Biodiversity and Ecosystem Services regional assessment for Africa.

350

#### 351 Species trends of Afro-Palearctic migrants

352 Although sample sizes are small, the combined indices for Afro-Palearctic migrants are  
353 increasing, reflecting positive trends for most species. This result is perhaps surprising, given  
354 the well-established long-term and ongoing declines in their breeding population across at least  
355 western Europe (<http://www.ebcc.info/index.php?ID=612>), and may point to the difficulty in  
356 monitoring mobile and variable non-breeding populations and interpreting their trends, given  
357 incomplete knowledge of migratory connectivity and non-breeding ranges (Vickery et al. 2014).  
358 Only with more complete monitoring across African countries would we be able to capture and  
359 understand migrant bird trends, Afro-Palearctic, as well as, and importantly, intra-African  
360 migrant species too.

361

#### 362 Developing a Global Wild Bird Index

363 The WBI project aims to encourage the development of land bird surveys in countries and  
364 regions where data are lacking, and seeks to synthesise relevant information on bird trends  
365 globally. As described above, bird monitoring programmes are being developed in a number of  
366 countries, raising the prospect of being able to chart the population trajectories of more species,  
367 and create more representative species trends over a wider area. If this were possible, such

368 indicators would complement existing global biodiversity indices, such as the Living Planet  
369 Index (LPI: Loh et al. 2005; Collen et al. 2009; WWF 2016) and the Red List Index (RLI: Butchart  
370 et al. 2004, 2007), which are widely used in biodiversity assessments (e.g. Butchart et al. 2010;  
371 Tittensor et al. 2014). The WBI and LPI actually share similar index methods but differ in that  
372 the underlying trend data for the former come solely from systematically designed bird  
373 surveys, whereas for the latter they come from a wide range of sources reporting vertebrate  
374 trends. Note that bird trends from the WBI are routinely incorporated into the LPI (WWF 2016).  
375 The RLI is different, as it describes changes in the extinction risk of species derived from repeat  
376 assessments. However, the trend data produced by count schemes provide one of the key pieces  
377 of information required to assess the extinction risk and hence the Red List category of each  
378 species, and thereby help to underpin the production of RLIs at a variety of scales. In this way,  
379 WBIs complement and extend the current set of biodiversity indices, and we hope that their  
380 geographical coverage can be expanded.

381

## 382 **Acknowledgements**

383 We thank the many volunteer surveyors who contributed to data collection. We thank Achilles  
384 Byaruhanga, Paul Matiku and Ian Fisher for assistance and Leo Soldaat for advice on trend  
385 analyses. Core funding for this work was provided by the RSPB. We also thank the European  
386 Commission for support through the EUROGEOSS project, Grant Agreement No. 226487, and  
387 the Biodiversity Indicator Partnership. In Botswana, additional co-funding came from the  
388 Global Environment Facility/Small Grants Programme (BOT/SGP/OP4/CORE/09/12), the Global  
389 Environment Facility/United Nations Development Programme (project PIMS no. 5359), and

390 Debswana (Contract No.: 395-ORA-C005587). Additionally, the Department of Wildlife and  
391 National Parks, and Department of Environmental Affairs provide significant support. The  
392 computer program TRIM (TRends and Indices for Monitoring data) developed by Statistics  
393 Netherlands is free to download: [https://www.cbs.nl/en-gb/society/nature-and-](https://www.cbs.nl/en-gb/society/nature-and-environment/indices-and-trends--trim--)  
394 [environment/indices-and-trends--trim--](https://www.cbs.nl/en-gb/society/nature-and-environment/indices-and-trends--trim--); as is the MSI Tool: [https://www.cbs.nl/en-](https://www.cbs.nl/en-gb/society/nature-and-environment/indices-and-trends--trim--/msi-tool)  
395 [gb/society/nature-and-environment/indices-and-trends--trim--/msi-tool](https://www.cbs.nl/en-gb/society/nature-and-environment/indices-and-trends--trim--/msi-tool).

396

### 397 **Author contributions**

398 S.R.W. collated and analysed the data and drafted the paper

399 M.A.E. provided input to the analysis and the paper write-up.

400 D.S. provided input to the paper write-up.

401 F.B.M. organised collection of the Kenya data and provided input to the paper write-up.

402 I.J.B. provided input to the analysis and paper write-up.

403 S.H.M.B. provided input to the analysis and paper write-up.

404 K.M. organised collection of the Botswana data and provided input to the paper write-up.

405 D.N.-W. organised collection of the Uganda data and provided input to the paper write-up.

406 P.K.N. provided input to the paper write-up.

407 D.P. provided input to the paper write-up.

408 K.J.S. provided input to the paper write-up.

409 R.D.G. has had a major input to the analysis and paper write-up.

410

### 411 **References**

412 Beresford, A.E., Eshiamwata, G.W., Donald, P.F., Balmford, A., Bertzky, B., Brink, A.B.,  
413 Fishpool, L.D., Mayaux, P., Phalan, B., Simonetti, D. & Buchanan, G.M. (2013) Protection  
414 reduces loss of natural land-cover at sites of conservation importance across Africa. *PLoS ONE*,  
415 8(5), e65370.

416 Buesching, C.D., Newman, C. & MacDonald, D.W. (2014) How dear are deer volunteers: the  
417 efficiency of monitoring deer using teams of volunteers to conduct pellet group counts. *Oryx*,  
418 48(4), 593-601.

419 Butchart, S.H.M., Akçakaya, H.R., Chanson, J., Baillie, J.E.M., Collen, B., Quader, S., Turner,  
420 W.R., Amin, R., Stuart, S.N. & Hilton-Taylor, C. (2007) Improvements to the Red List Index.  
421 *PLoS ONE*, 2(1), e140.

422 Butchart, S.H.M., Stattersfield, A.J., Bennun, L.A., Shutes, S.M., Akçakaya, H.R., Baillie, J.E.M.,  
423 Stuart, S.N., Hilton-Taylor, C. & Mace, G.M. (2004) Measuring global trends in the status of  
424 biodiversity: Red List Indices for birds. *PLoS Biology*, 2(12), e383.

425 Butchart, S.H.M., Walpole, M., Collen, B., van Strien, A., Scharlemann, J.P.W., Almond, R.E.A.,  
426 Baillie, J.E.M., Bomhard, B., Brown, C., Bruno, J., Carpenter, K.E., Carr, G.M., Chanson, J.,  
427 Chenery, A.M., Csirke, J., Davidson, N.C., Dentener, F., Foster, M., Galli, A., Galloway, J.N.,  
428 Genovesi, P., Gregory, R.D., Hockings, M., Kapos, V., Lamarque, J.-F., Leverington, F., Loh, J.,  
429 McGeoch, M.A., McRae, L., Minasyan, A., Hernández Morcillo, M., Oldfield, T.E.E., Pauly, D.,  
430 Quader, S., Revenga, C., Sauer, J.R., Skolnik, B., Spear, D., Stanwell-Smith, D., Stuart, S.N.,  
431 Symes, A., Tierney, M., Tyrrell, T.D., Vié, J.-C., Watson, R. (2010) Global Biodiversity: Indicators  
432 of Recent Declines. *Science*, 328(5982), 1164-1168.

433 Chape, S., Harrison, J., Spalding, M., & Lysenko, I. (2005) Measuring the extent and  
434 effectiveness of protected areas as an indicator for meeting global biodiversity targets.  
435 *Philosophical Transactions of the Royal Society of London B: Biological Sciences*, 360, 443-455.

436 Collen, B., McRae, L. & Baillie, J.E.M. (2009) Monitoring change in vertebrate abundance: The  
437 Living Planet Index'. *Conservation Biology*, 23: 317–327.

438 Conrad, C.C. & Hilchey, K.G. (2011) A review of citizen science and community-based  
439 environmental monitoring: issues and opportunities. *Environmental Monitoring and Assessment*,  
440 176, 273-291.

441 Cooper, C.B., Shirk, J. & Zuckerberg, B. (2014) The Invisible Prevalence of Citizen Science in  
442 Global Research: Migratory Birds and Climate Change. *PLoS ONE* 9(9), e106508.

443 Crall, A.W., Newman, G.J., Stohlgren, T.J., Holfelder, K.A., Graham, J. & Waller, D.M. (2011)  
444 Assessing citizen science data quality: an invasive species case study. *Conservation Letters*, 4, 433-  
445 442.

446 Elliott, C.C.H. (1990) The migrations of the Red-billed Quelea *Quelea quelea* and their relation to  
447 crop damage. *Ibis*, 132(2), 232-237.

448 European Commission. (2014) *Green paper on Citizen Science for Europe: Towards a society of*  
449 *empowered citizens and enhanced research*. European Commission, Brussels.

450 Furness, R.W. & Greenwood, J.J.D. (1993) *Birds as Monitors of Environmental Change*. Chapman  
451 and Hall, London, UK.

452 Gamero, A., Brotons, L., Brunner, A., Foppen, R., Fornasari, L., Gregory, R.D., Herrando, S.,  
453 Horak, D., Jiguet, F., Kmecl, P., Lehtikoinen, A., Lindström, A., Paquet, J.-Y., Reif, J., Sirkiä, P.M.,  
454 Škorpilová, J., van Strien, A., Szép, T., Telenský, T., Teufelbauer, N., Trautmann, S., van

455 Turnhout, C.A.M., Vermouzek, Z., Vikstrøm, T. & Voříšek, P. (2016) Tracking progress towards  
456 EU biodiversity strategy targets: EU policy effects in preserving its common farmland birds.  
457 *Conservation Letters*, doi:10.1111/conl.12292.

458 Gaston, K.J., Jackson, S.F., Cantú-Salazar, L. & Cruz-Piñón, G. (2008). The ecological  
459 performance of protected areas. *Annual Review of Ecology, Evolution, and Systematics* **39**, 93–113.

460 Gregory, R.D., van Strien, A., Voříšek, P., Meyling, A.W.G., Noble, D.G., Foppen, R.P. &  
461 Gibbons, D.W. (2005) Developing indicators for European birds. *Philosophical Transactions of the*  
462 *Royal Society B: Biological Sciences*, 360(1454), 269-288.

463 Inger, R., Gregory, R., Duffy, J.P., Stott, I., Voříšek, P., & Gaston, J.K. (2015) Common European  
464 birds are declining rapidly while less abundant species' numbers are rising. *Ecology Letters*, 18,  
465 28-36.

466 Jørgensen, P.S., Böhning-Gaese, K., Thorup, K., Tøttrup, A.P., Chylarecki, P., Jiguet, J.,  
467 Lehikoinen, A., Noble, D., Reif, J., Schmid, H., van Turnhout, C., Burfield, I., Foppen, R.,  
468 Voříšek, P., van Strien, A., Gregory, R.D. & Rahbek, C. (2016) Continental-scale global change  
469 attribution in European birds - combining annual and decadal time scales". *Global Change*  
470 *Biology*, 22, 530–543.

471 Juillard, R., Clavel, J., Devictor, V., Jiguet, F. & Couvet, D. (2006) Spatial segregation of  
472 specialists and generalists in bird communities. *Ecology Letters*, 9, 1237-1244.

473 Jürgens, N., Schmiedel, U., Haarmeyer, D.H., Dengler, J., Finckh, M., Goetze, D., Gröngröft, A.,  
474 Hahn, K., Koulibaly, A., Luther-Mosebach, J., Muche, G., Oldeland, J., Petersen, A., Porembski,  
475 S., Rutherford, M.C., Schmidt, M., Sinsin, B., Strohbach, B.J., Thiombiano, A., Wittig, R. & Zizka,  
476 G. (2012) The BIOTA Biodiversity Observatories in Africa—a standardized framework for large-

477 scale environmental monitoring. *Environ. Monit. Assess.* 184: 655–678. Loh, J., Green, R.E.,  
478 Ricketts, T., Lamoreux, J., Jenkins, M., Kapos, V. & Randers, J. (2005) The Living Planet Index:  
479 using species population time series to track trends in biodiversity. *Philosophical Transactions of*  
480 *the Royal Society of London B*, 360, 289–295.

481 Nature Uganda. (2015) *The State of Uganda's Birds 2014: Indicators for our Changing Environment*.  
482 Nature Uganda, Kampala, Uganda.

483 North American Bird Conservation Initiative, U.S. Committee. (2014) *The State of the Birds 2014*  
484 *Report*. U.S. Department of Interior, Washington D.C., USA.

485 O'Connor, J., Ehmke, G. & Cunningham, R.B. (2015) *The State of Australia's Birds 2015: Headline*  
486 *Trends for Terrestrial Birds*. BirdLife Australia.

487 Pe'er, G., Visconti, P., Dicks, L.V., Arlettaz, R., Baldi, A., Benton, T.G., Collins, S., Dieterich, M.,  
488 Gregory, R.D., Hartig, F., Henle, K., Hobson, P.R., Kleijn, D., Neumann, R.K., Robijns, T.,  
489 Schmidt, J., Schwartz, A., Sutherland, W.J., Turbe, A., Wulf, F. & Scott, A.V. (2014) EU  
490 agricultural reform fails on biodiversity. *Science*, 344, 1091-1092.

491 Pellissier, V., Touroult, J., Julliard, R., Sibley, J.P. & Jiguet, F. (2013) Assessing the Natura 2000  
492 network with a common breeding birds survey. *Animal Conservation*, 16, 566-574.

493 Schmeller, D.S., Böhm, M., Arvanitidis, C., Barber-Meyer, S., Brummitt, N., Chandler, M.,  
494 Chatzinikolaou, E., Costello, M.J., Ding, H., García-Moreno, J., Gill, M., Haase, P., Jones, M.,  
495 Juillard, R., Magnusson, W.E., Martin, C.S., McGeoch, M., Mihoub, J-B., Pettorelli, N., Proença,  
496 V., Peng, C., Regan, E., Schmiedel, U., Simaika, J.P., Weatherdon, L., Waterman, C., Xu, H. &  
497 Belnap, J. (2017) Building capacity in biodiversity monitoring at the global scale. *Biodiv. Conserv.*,  
498 DOI 10.1007/s10531-017-1388-7.

499 Secretariat of the Convention on Biological Diversity. (2014) *Global Biodiversity Outlook 4*.  
500 Montréal, Canada.

501 Senyatso, K., Sheehan, D., Eaton, M. & Butchart, S. (2008) *Guidelines for the development of Bird*  
502 *Population Monitoring in Africa*. BirdLife International, Cambridge, UK.

503 Soldaat, L.L., Pannekoek, J., Verweij, R.J.T., van Turnhout, C.A.M. & van Strien, A.J. 2017. A  
504 Monte Carlo method to account for sampling error in multi-species indicators. *Ecological*  
505 *Indicators* 81, 340–347.

506 Stephenson, P.J., Bowles-Newark, N., Regan, E., Stanwell-Smith, D., Diagana, M., Höft, R.,  
507 Abarchi, H., Abrahamse, T., Akello, C., Allison, H., Banki, O., Batieno, B., Dieme, S., Domingos,  
508 A., Galt, R., Githaiga, C.W., Bine Guindo, A., Hafashimana, D.L.N., Hirsch, T., Hobern, D.,  
509 Kaaya, J., Kaggwa, R., Mphatso Kalemba, M., Linjouom, I., Manaka, B., Mbwambo, Z., Musasa,  
510 M., Okoree, E., Rwetsiba, A., Brahim Siam, A., & Thiombiano, A. (2016). Unblocking the flow of  
511 biodiversity data for decision-making in Africa, *Biological Conservation*  
512 doi.org/10.1016/j.biocon.2016.09.003.

513 Stephens, P.A., Mason, L.R., Green, R.E., Gregory, R.D., Sauer, J.R., Alison, J., Aunins, A.,  
514 Brotons, L., Butchart, S.H.M., Campedelli, T., Chodkiewicz, T., Chylarecki, P., Crowe, O., Elts, J.,  
515 Escandell, V., Foppen, R.P.B., Heldbjerg, H., Herrando, S., Husby, M., Jiguet, F., Lehikoinen, A.,  
516 Lindstrom, \_A., Noble, D.G., Paquet, J., Reif, J., Sattler, T., Szep, T., Teufelbauer, N., Trautmann,  
517 S., van Strien, A.J., van Turnhout, C.A.M., Voříšek, P. & Willis, S.G. (2016) Consistent response  
518 of bird populations to climate change on two continents. *Science*, 352(6281), 84-87.

519 Tittensor, D.P., Walpole, M., Hill, S.L.L., Boyce, D.G., Britten, G.L., Burgess, N.D., Butchart,  
520 S.H.M., Leadley, P.W., Regan, E.C., Alkamade, R., Baumung, R., Bellard, C., Bouwman, L.,



521 Bowles-Newark, N.J., Chenery, A.M., Cheung, W.W.L., Christensen, V.H., Cooper, D.,  
522 Crowther, A.R., Dixon, M.J.R., Galli, A., Gaveau, V., Gregory, R.D., Gutierrez, N.L., Hirsch, T.,  
523 Hoft, R., Januchowski-Hartley, S.R., Karmann, M., Krug, C.B., Leverington, F.J., Loh, J., Lojenga,  
524 R.K., Malsch, K., Marques, A., Morgan, D.H.W., Newbold, T., Noonan-Mooney, K., Pagad, S.N.,  
525 Parks, B.C., Pereira, H.M., Robertson, T., Rondinini, C., Santini, L., Schindler, R., Sumaila, U.R.,  
526 Teh, L.S.L., van Kolck, J., Visconti, P. & Ye, Y. (2014) A mid-term analysis of progress towards  
527 international biodiversity targets. *Science*, 346, 241-244.  
528 van Strien, A., Pannekoek, J., Hagemeyer, W. & Verstrael, T. (2004) A loglinear Poisson  
529 regression method to analyse bird monitoring data. *Bird Census News*, 13, 33-39.  
530 Vickery, J.A., Ewing, S.R., Smith, K.W., Pain, D.J., Bairlein, F., Škorpilová, J. & Gregory, R.D.  
531 (2014) The decline of Afro-Palaeartic migrants and evidence of potential causes. *Ibis*, 156, 1-22.  
532 WWF. (2016). *Living Planet Report 2016. Risk and resilience in a new era*. WWF International,  
533 Gland, Switzerland.

534

### 535 **Biographical sketches**

536 S.R.W. oversees the current monitoring schemes as part of the Global Wild Bird Index project,  
537 which also involves M.A.E., I.J.B, P.K.N. and R.D.G. F.B.M. coordinates the monitoring scheme  
538 in Kenya, K.M. coordinates the monitoring scheme in Botswana and D.N.-W. coordinated the  
539 monitoring scheme in Uganda, until 2016. D.S. led on designing, establishing and developing  
540 the monitoring schemes from 2008, along with M.A.E., R.D.G, S.M.H.B, K.J.S. and D.P.. M.A.E.,  
541 R.D.G. and S.M.H.B. established the overall GWBI programme.

542 **Table 1.** The number of transects surveyed and bird species recorded during bird population  
543 monitoring in Botswana (2010-2015), Kenya (2011-2015) and Uganda (2009-2015), for all  
544 transects covered, transects within and outside Protected Areas.

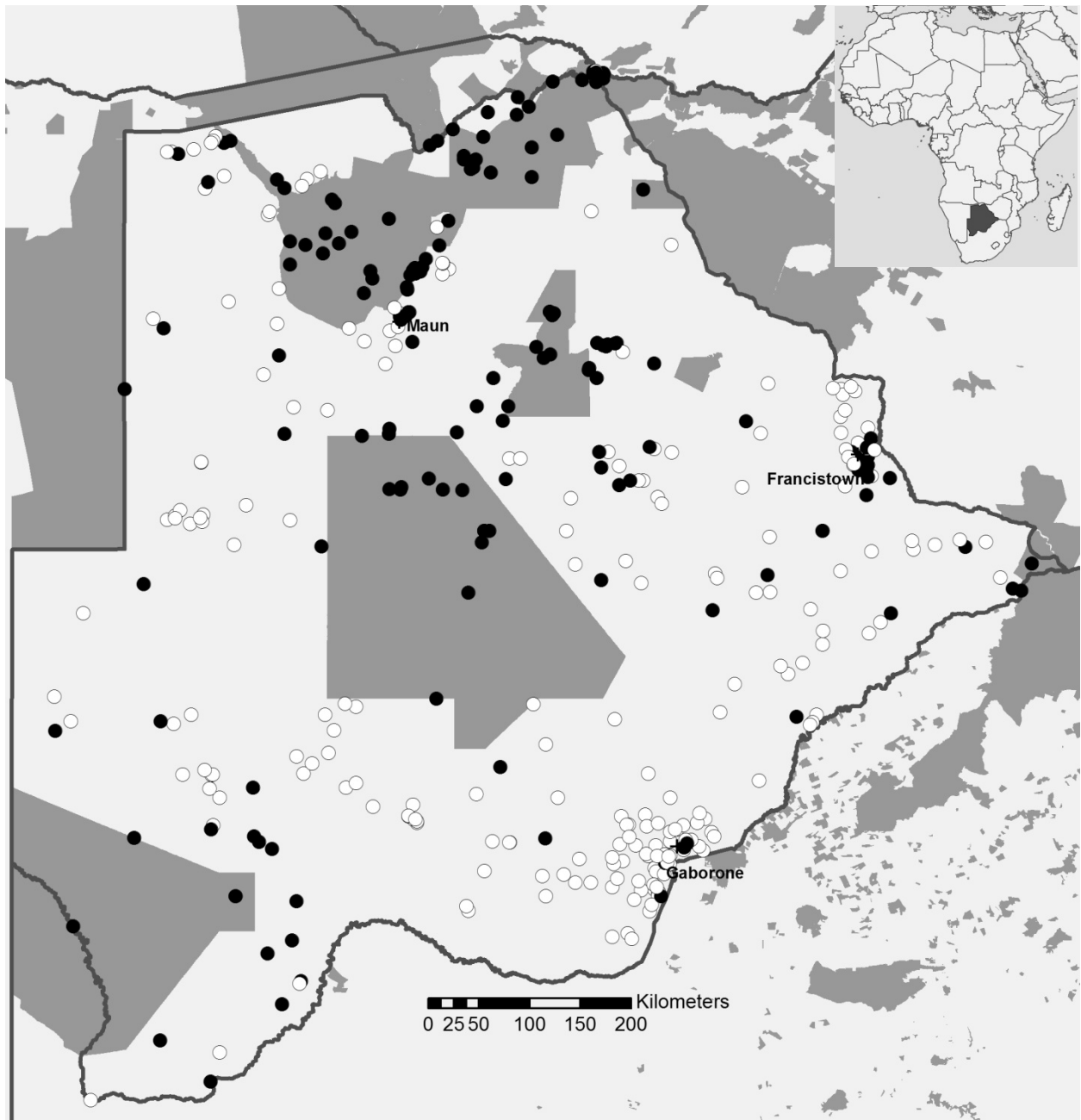
Country	Year	All transects surveyed	Transects within PA	Transects outside PA	Total number of species recorded	Total bird count
Botswana	2010	128	62	66	309	20,713
	2011	242	100	142	411	61,355
	2012	316	128	188	385	84,942
	2013	232	97	135	362	64,227
	2014	283	116	167	411	80,219
	2015	244	92	152	392	60,404
	total	486	194	292	501	371,860
Kenya	2011	7	6	1	157	1,758
	2012	22	17	5	332	7,591
	2013	33	19	14	376	9,330
	2014	43	26	18	428	13,173
	2015	57	31	26	508	20,743
	total	92	49	43	638	52,595
Uganda	2009	65	37	30	507	10,090
	2010	58	31	29	446	9,766
	2011	59	28	33	487	11,778
	2012	73	37	38	597	11,762
	2013	71	38	35	517	9,349
	2014	81	45	38	617	12,774
	2015	64	26	40	448	7,259
	total	118	59	59	789	220,214

545 **Table 2.** A summary of the Wild Bird Indices showing the number of species significantly increasing, declining or uncertain trends  
546 within each indicator. Linear trend estimates (with standard error) in the Wild Bird Indices for Botswana and Uganda are also  
547 presented, with the percentage index changes shown for the whole time series. Significance levels are also shown (highlighted in  
548 bold).

Country	Indicator	Spp in indicator	Strong increase	Moderate increase	Stable	Uncertain	Moderate decline	Steep decline	Overall trend	% change
Botswana	WBI	95	26	21	2	44	1	1	1.087 (0.006) <b>strong increase</b>	64.6
Uganda	WBI	78	2	13	2	40	14	7	0.992 (0.004) stable	-15.0
Botswana	Habitat generalists	34	10	10	0	14	0	0	1.083 (0.009) <b>strong increase</b>	59.5
Uganda	Habitat generalists	21	0	4	0	12	3	2	0.988 (0.008) stable	-178.2
Botswana	Grassland specialists	24	6	6	0	11	1	0	1.097 (0.011) <b>strong increase</b>	75.8
Uganda	Farm/grassland specialists	17	2	4	1	7	3	0	1.032 (0.011) <b>mod. increase</b>	16.8
Botswana	Savanna specialists	16	2	1	1	11	0	1	1.058 (0.015) <b>mod. increase</b>	44.1
Uganda	Savanna specialists	20	0	5	1	10	4	0	1.014 (0.008) stable	-6.9
Botswana	Woodland specialists	21	8	4	1	8	0	0	1.105 (0.011) <b>strong increase</b>	77.3
Uganda	Forest specialists	20	0	0	0	11	4	5	0.944 (0.008) <b>mod. decline</b>	-38.8
Botswana	AP migrants	6	3	0	0	3	0	0	1.074 (0.022) <b>mod. increase</b>	46.6
Uganda	AP migrants	6	2	2	0	1	1	0	1.087 (0.028) <b>mod. increase</b>	59.7
Botswana	Within PAs	43	5	10	0	27	1	0	1.060 (0.008) <b>mod. increase</b>	42.7
Uganda	Within PAs	12	0	3	0	8	1	0	1.007 (0.010) stable	-5.3
Botswana	Outside PAs	43	12	10	0	21	0	0	1.102 (0.009) <b>strong increase</b>	79.5
Uganda	Outside PAs	12	0	1	1	5	4	1	0.973 (0.008) <b>mod. decline</b>	-19.0

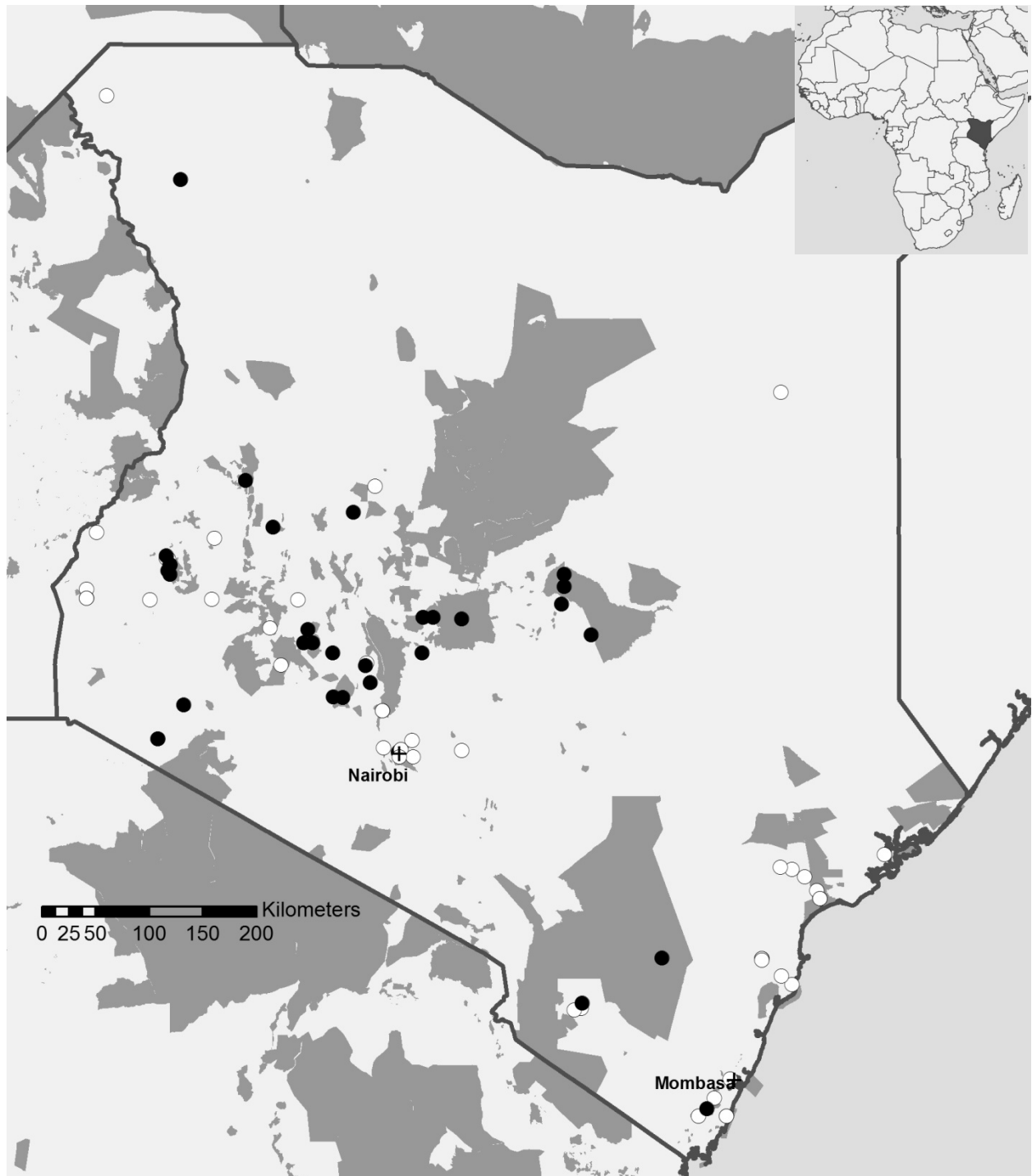
549 **Figure 1.** The distribution of transects surveyed at least once in Botswana between 2010 and  
550 2015. The black circles show transects located within Protected Areas and the white circles  
551 show transects outside. The dark shaded areas show the main Protected Areas in each country  
552 (from <http://www.protectedplanet.net/>).

553  
554



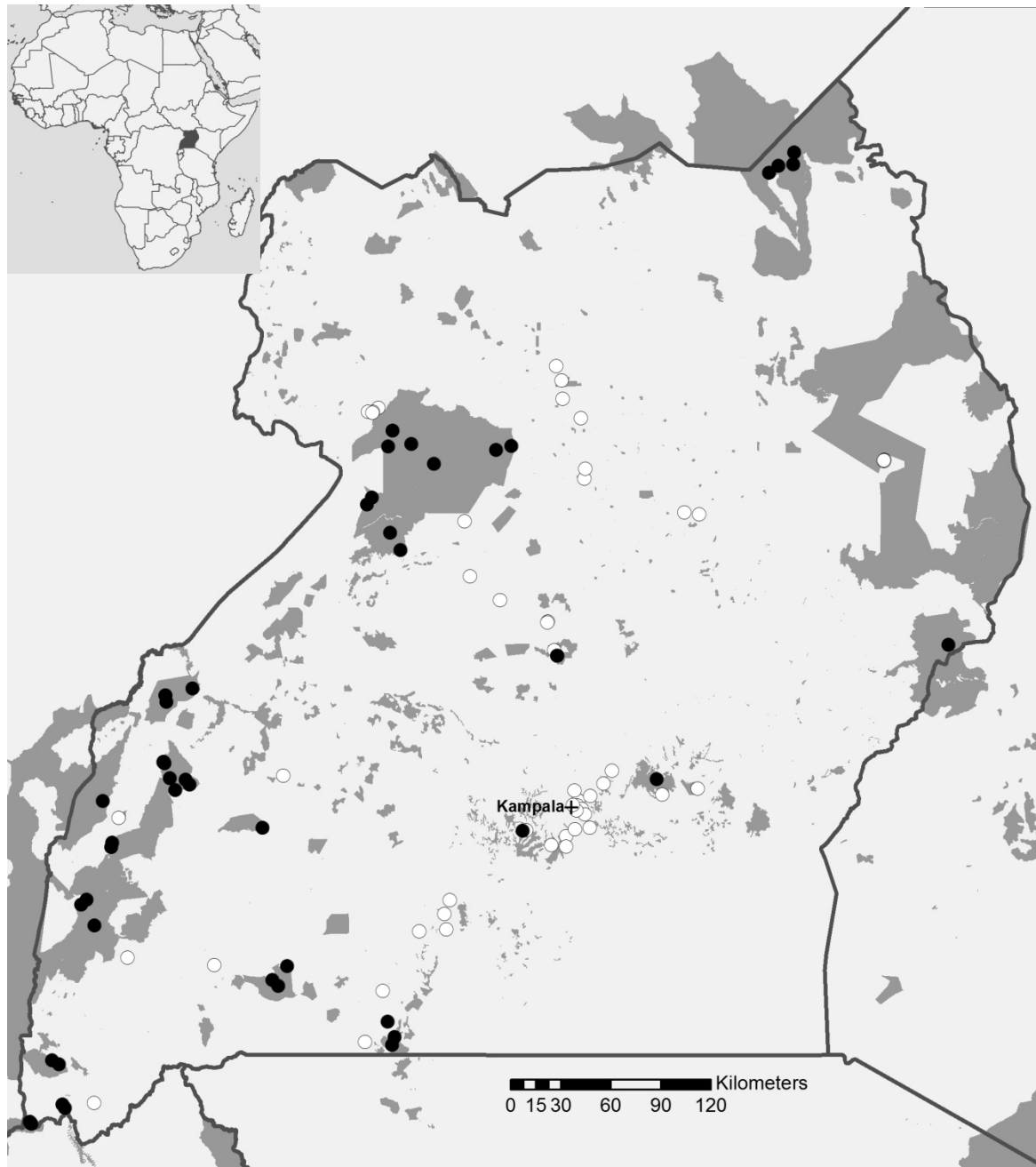
555 **Figure 2.** The distribution of transects surveyed at least once in Kenya between 2011 and  
556 2015. The black circles show transects located within Protected Areas and the white circles  
557 show transects outside. The dark shaded areas show the main Protected Areas in each country  
558 (from <http://www.protectedplanet.net/>).

559  
560

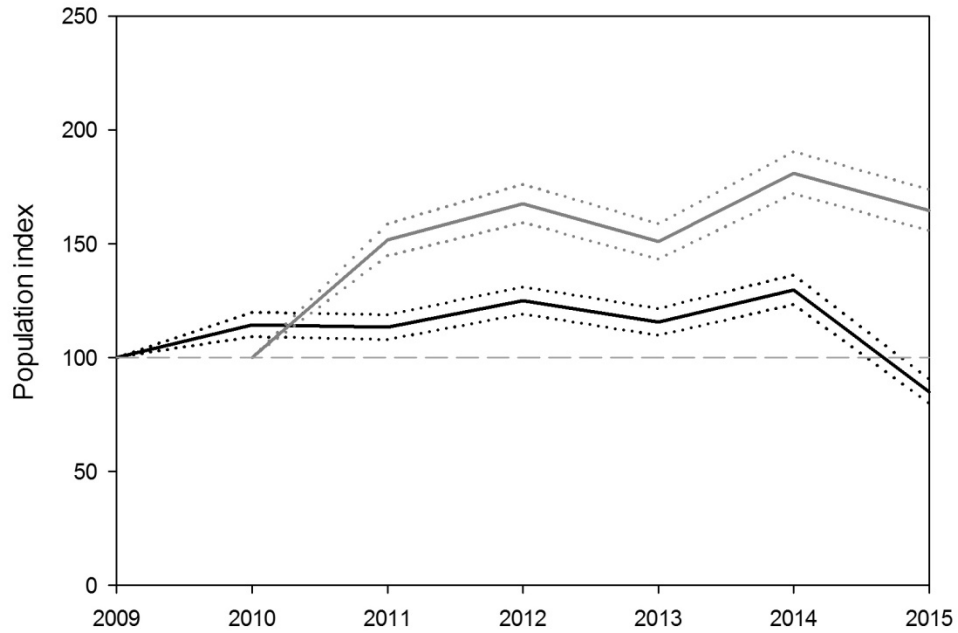


561 **Figure 3.** The distribution of transects surveyed at least once in Uganda between 2009 and  
562 2015. The black circles show transects located within Protected Areas and the white circles  
563 show transects outside. The dark shaded areas show the main Protected Areas in each country  
564 (from <http://www.protectedplanet.net/>).

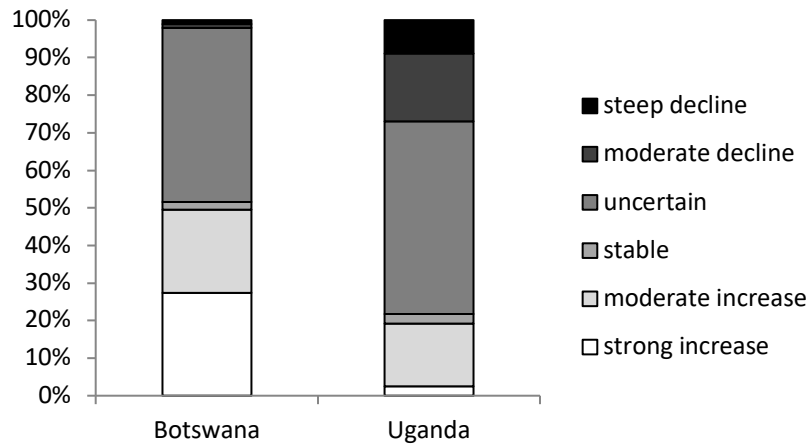
565



566 **Figure 4.** Wild Bird Indices for Botswana (95 species, grey line) and Uganda (78 species, black  
 567 line, with 95% confidence limits). For each indicator, the proportion of the species within each  
 568 TRIM significance classification is also shown in the bar chart below.  
 569



570



571

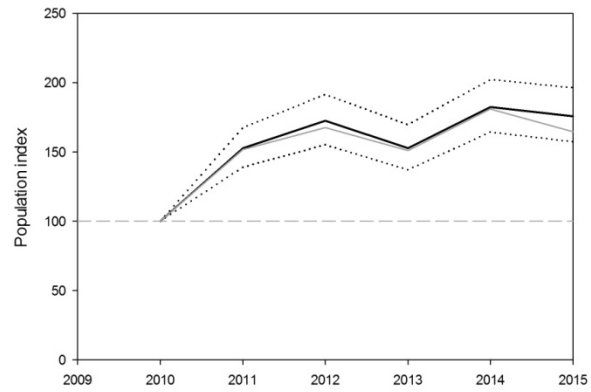
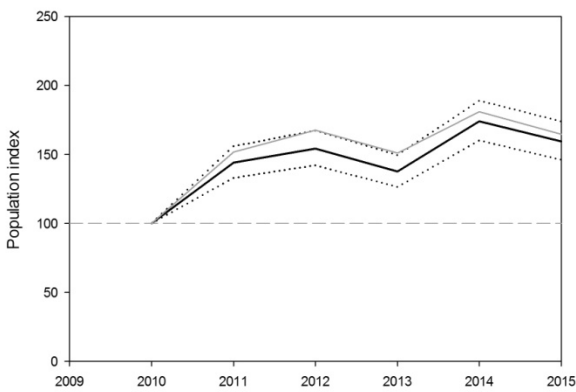
572 **Figure 5.** Wild Bird Indices for habitat generalists and specialists in (a) Botswana and (b)  
 573 Uganda (with 95% confidence limits). For each indicator, the proportion of the species within  
 574 each TRIM significance classification is also shown in bar chart below. As a comparator the  
 575 overall Wild Bird Index for each country is shown as a grey line.

576

577 (a) Botswana

578 Generalists (34 species)

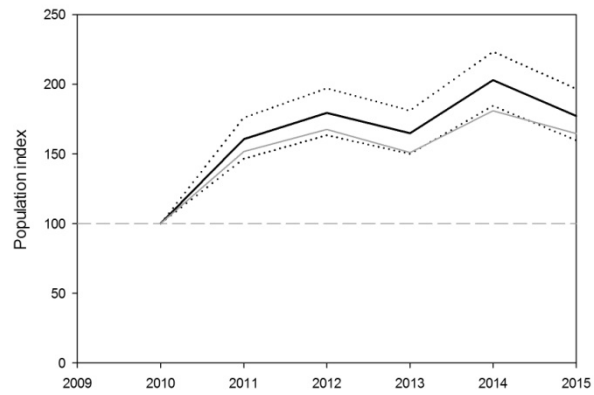
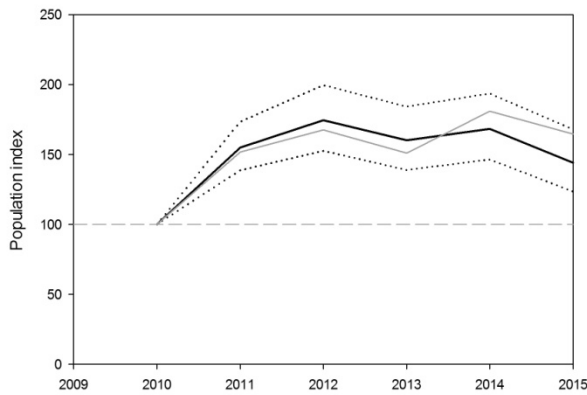
Grassland (24 species)



579

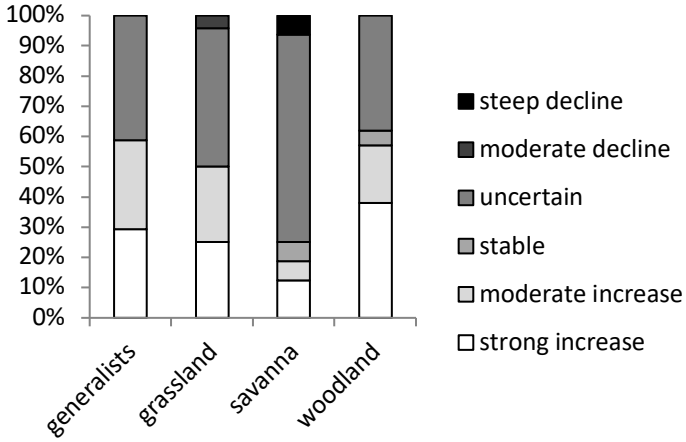
580 Savanna (16 species)

Woodland (21 species)



581





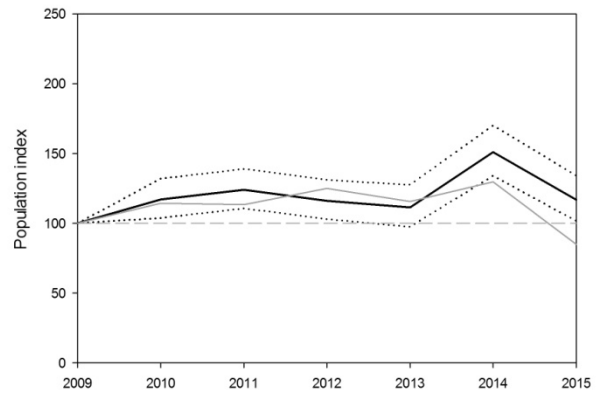
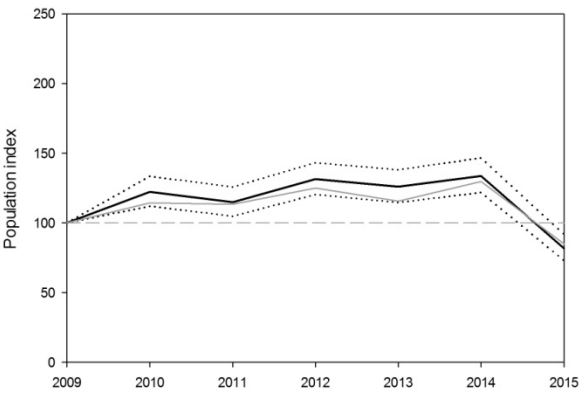
582

583

584 (b) Uganda

585 Generalists (21 species)

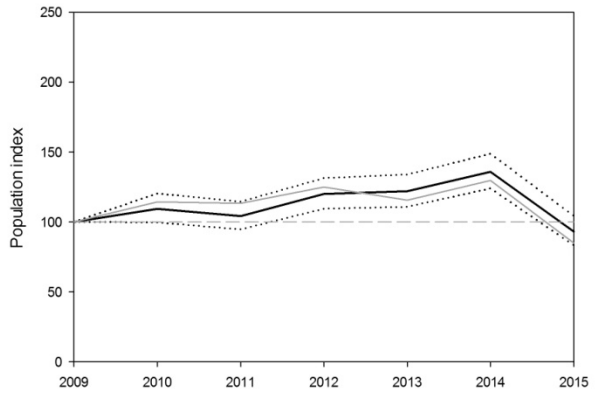
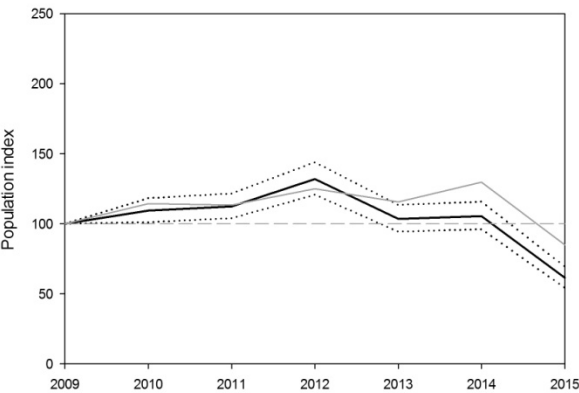
Farmland/grassland (17 species)



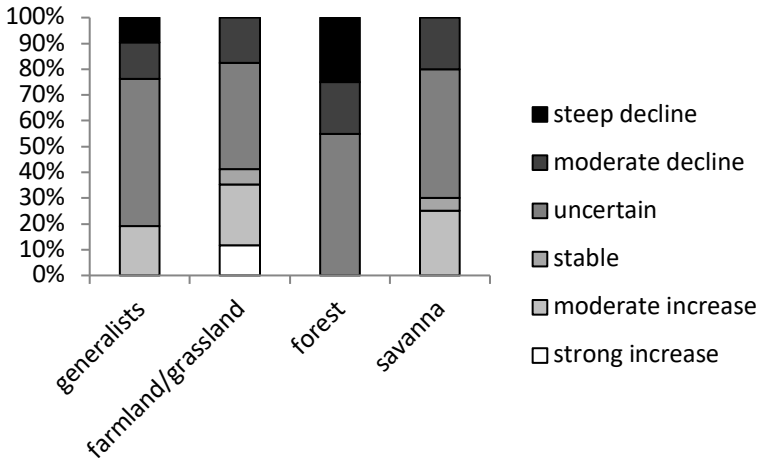
586

587 Forest (20 species)

Savanna (20 species)



588



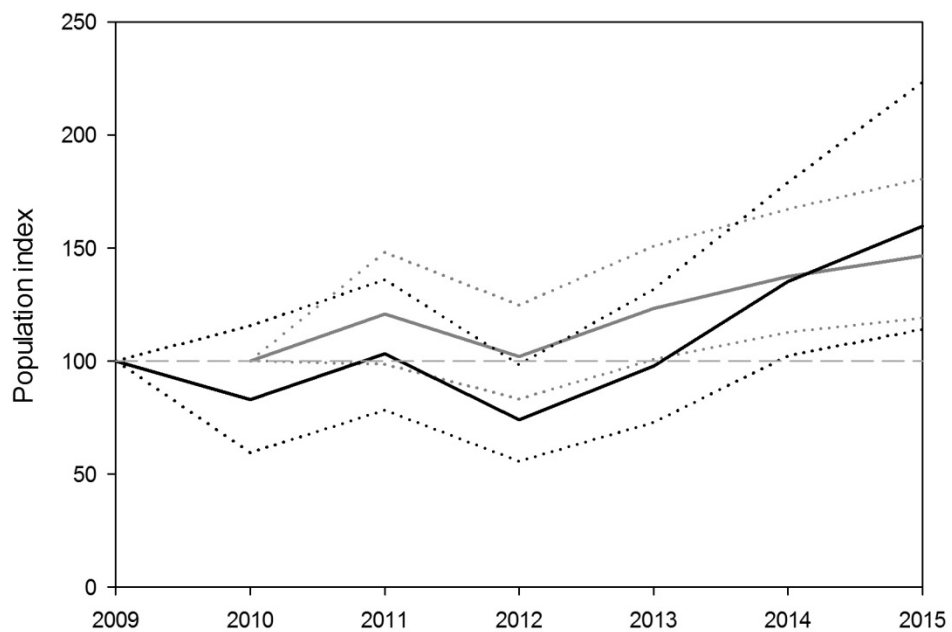
589

590

591

592 **Figure 6.** Wild Bird Index for Afro-Palearctic migrants in Botswana (grey) and Uganda (black)  
593 with 95% confidence limits.

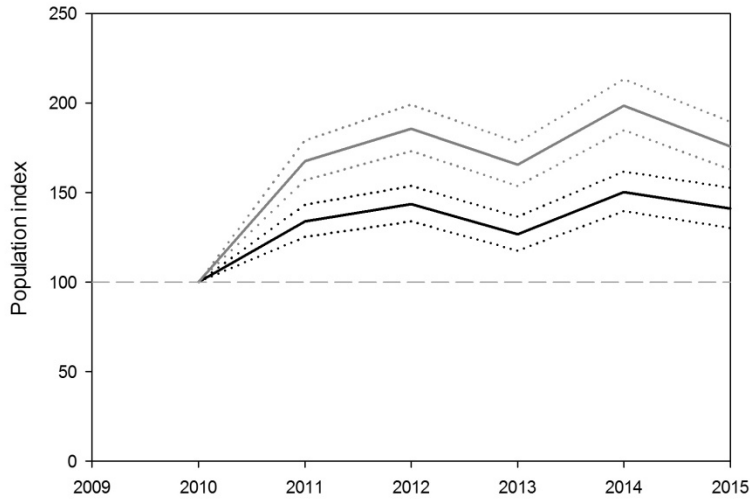
594



595

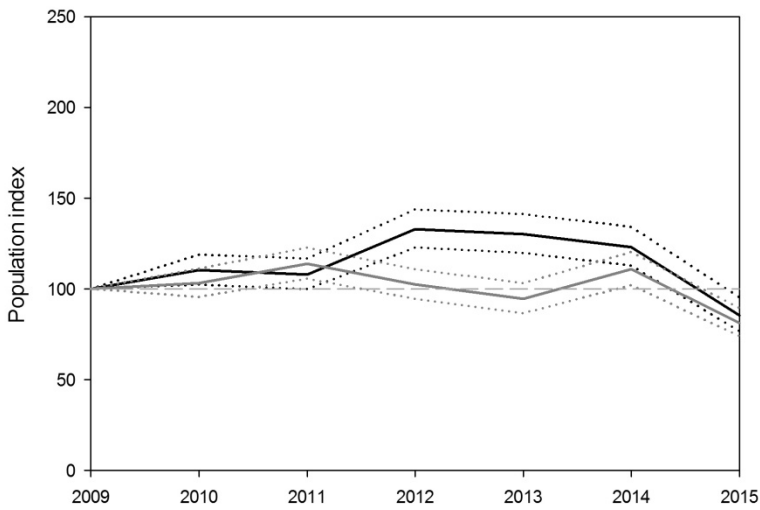
596 **Figure 7.** Wild Bird Indices within (black line) and outside (grey line) Protected Areas in (a)  
 597 Botswana and (b) Uganda (with 95% confidence limits). For each indicator, the proportion of the  
 598 species within each TRIM significance classification is also shown in the bar chart below.

599 (a)

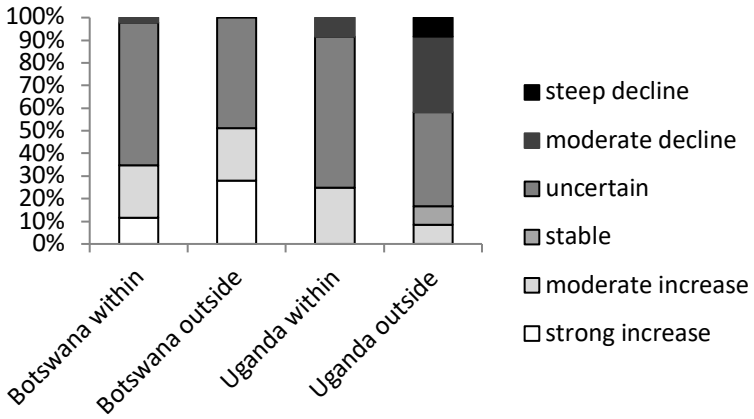


600

601 (b)



602



603