

# Use of anastrozole for breast cancer prevention (IBIS-II): long-term results of a randomised controlled trial



Jack Cuzick, Ivana Sestak, John F Forbes, Mitch Dowsett, Simon Cawthorn, Robert E Mansel, Sibylle Loibl, Bernardo Bonanni, D Gareth Evans, Anthony Howell, on behalf of the IBIS-II investigators\*



## Summary

**Background** Two large clinical trials have shown a reduced rate of breast cancer development in high-risk women in the initial 5 years of follow-up after use of aromatase inhibitors (MAP.3 and International Breast Cancer Intervention Study II [IBIS-II]). Here, we report blinded long-term follow-up results for the IBIS-II trial, which compared anastrozole with placebo, with the objective of determining the efficacy of anastrozole for preventing breast cancer (both invasive and ductal carcinoma in situ) in the post-treatment period.

**Methods** IBIS-II is an international, randomised, double-blind, placebo-controlled trial. Postmenopausal women at increased risk of developing breast cancer were recruited and were randomly assigned (1:1) to either anastrozole (1 mg per day, oral) or matching placebo daily for 5 years. After treatment completion, women were followed on a yearly basis to collect data on breast cancer incidence, death, other cancers, and major adverse events (cardiovascular events and fractures). The primary outcome was all breast cancer.

**Findings** 3864 women were recruited between Feb 2, 2003, and Jan 31, 2012. 1920 women were randomly assigned to 5 years anastrozole and 1944 to placebo. After a median follow-up of 131 months (IQR 105–156), a 49% reduction in breast cancer was observed for anastrozole (85 vs 165 cases, hazard ratio [HR] 0.51, 95% CI 0.39–0.66,  $p < 0.0001$ ). The reduction was larger in the first 5 years (35 vs 89, 0.39, 0.27–0.58,  $p < 0.0001$ ), but still significant after 5 years (50 vs 76 new cases, 0.64, 0.45–0.91,  $p = 0.014$ ), and not significantly different from the first 5 years ( $p = 0.087$ ). Invasive oestrogen receptor-positive breast cancer was reduced by 54% (HR 0.46, 95% CI 0.33–0.65,  $p < 0.0001$ ), with a continued significant effect in the period after treatment. A 59% reduction in ductal carcinoma in situ was observed (0.41, 0.22–0.79,  $p = 0.0081$ ), especially in participants known to be oestrogen receptor-positive (0.22, 0.07–0.65,  $p < 0.0001$ ). No significant difference in deaths was observed overall (69 vs 70, HR 0.96, 95% CI 0.69–1.34,  $p = 0.82$ ) or for breast cancer (two anastrozole vs three placebo). A significant decrease in non-breast cancers was observed for anastrozole (147 vs 200, odds ratio 0.72, 95% CI 0.57–0.91,  $p = 0.0042$ ), owing primarily to non-melanoma skin cancer. No excess of fractures or cardiovascular disease was observed.

**Interpretation** This analysis has identified a significant continuing reduction in breast cancer with anastrozole in the post-treatment follow-up period, with no evidence of new late side-effects. Further follow-up is needed to assess the effect on breast cancer mortality.

**Funding** Cancer Research UK, the National Health and Medical Research Council Australia, Breast Cancer Research Foundation, Sanofi Aventis, and AstraZeneca.

**Copyright** © 2019 The Author(s). Published by Elsevier Ltd. This is an Open Access article under the CC BY 4.0 license.

## Introduction

Early work on therapeutic prevention of breast cancer has focused on selective oestrogen receptor modulators (SERMs), such as tamoxifen and raloxifene, which show anti-oestrogenic effects on the breast, as well as agonistic or antagonistic effects on some other organs. In a meta-analysis of several SERMs,<sup>1</sup> a 38% reduction in all breast cancer was observed, driven by 50% reduction of oestrogen receptor-positive tumours, but no effect on oestrogen receptor-negative tumours. Long-term follow up of two of these trials has shown that the effects of tamoxifen continue with a constant 29% annual preventive effect for at least 15 years after completion of treatment.<sup>2,3</sup>

A greater short-term reduction in breast cancer incidence was seen in two trials using the aromatase inhibitors, anastrozole<sup>4</sup> and exemestane.<sup>5</sup> The MAP.3 trial<sup>4</sup> compared exemestane with placebo in postmenopausal women at high risk of developing breast cancer and found a significant reduction in the incidence of all breast cancer by 53% and a 65% reduction in invasive breast cancer after a median follow-up of 35 months. However, all women were unblinded after the initial publication, so it was not possible to study a post-treatment effect, as has been seen with tamoxifen.<sup>2</sup>

The International Breast Cancer Intervention Study II (IBIS-II) was initiated in 2003 and recruited postmenopausal women without breast cancer but at high

Published Online  
December 12, 2019  
[https://doi.org/10.1016/S0140-6736\(19\)32955-1](https://doi.org/10.1016/S0140-6736(19)32955-1)

\* A list of collaborators is provided in the appendix

Centre for Cancer Prevention, Wolfson Institute of Preventive Medicine, Queen Mary University London, London, UK (Prof J Cuzick PhD, I Sestak PhD); Australia New Zealand Breast Cancer Trials Group Newcastle, University of Newcastle, Calvary Mater Hospital, Waratah, NSW, Australia (Prof J F Forbes MD); Ralph Lauren Centre for Breast Cancer Research, Royal Marsden, London, UK (Prof M Dowsett PhD); Breast Care Centre, Southmead Hospital, Bristol, UK (S Cawthorn MD); University Department of Surgery, University of Wales College of Medicine, Cardiff, UK (R E Mansel MD); German Breast Group, Frankfurt, Germany (Prof S Loibl MD); Division of Chemoprevention and Genetics, European Institute of Oncology, Milan, Italy (B Bonanni MD); and Prevent Breast Cancer Unit, Nightingale Breast Screening Centre, Manchester University NHS Foundation Trust, Manchester, UK (Prof G Evans MD, Prof A Howell MD)

Correspondence to: Prof Jack Cuzick, Centre for Cancer Prevention, Wolfson Institute of Preventive Medicine, Queen Mary University London, London EC1M 6BQ, UK  
[j.cuzick@qmul.ac.uk](mailto:j.cuzick@qmul.ac.uk)

See Online for appendix

### Research in context

#### Evidence before this study

At the time of the initial publication of this trial, we searched PubMed for reports published in English between Jan 1, 1980, and May 30, 2013. We used the search terms “breast cancer”, “prevention”, and “aromatase inhibitor”. Only one other prevention trial using an aromatase inhibitor had been reported and it has been discussed. However, we identified several adjuvant trials using aromatase inhibitors in which contralateral tumours were reported. We also identified an overview of selective oestrogen receptor modulators for breast cancer prevention. Two large trials in which aromatase inhibitors are being assessed for prevention of ductal carcinoma were also identified. For this Article, we repeated the search up to Oct 30, 2019. A US Preventive Services Task Force review was found, but no new studies on breast cancer prevention with aromatase inhibitors were identified.

#### Added value of this study

We report results of the randomised IBIS-II trial on the extended duration of benefit of anastrozole in preventing

breast cancer up to 12 years after entry and indicate for the first time a long-term benefit, which is larger than that seen for tamoxifen in this period. No excess of fractures, other cancers, cardiovascular disease, or death from any specific cause was seen in the extended follow-up. The number needed to treat to prevent one breast cancer has been reduced to 29.

#### Implications of all the available evidence

Our results provide additional support for the use of anastrozole as the treatment of choice for breast cancer risk reduction in most postmenopausal women at high risk of developing breast cancer. Its use has been supported by the National Institute for Health and Care Excellence in the UK and the US Preventive Services Task Force. Identification of women at high risk of early symptoms of oestrogen depletion and their management remains a challenge.

risk of developing it to receive either anastrozole (1 mg daily) or matching placebo. The first analysis after a median follow-up of 60 months (IQR 36–85) reported a significant reduction in incidence of 53% for all breast cancer (including ductal carcinoma in situ).<sup>4</sup> A 58% reduction in incidence of invasive oestrogen receptor-positive breast cancer and a 70% reduction in incidence of ductal carcinoma in situ was observed for anastrozole. As reported in adjuvant trials,<sup>6,7</sup> the main adverse events with anastrozole were fractures, joint-related effects, and menopausal symptoms, which are associated with an almost complete elimination of oestrogen in postmenopausal women using aromatase inhibitors.

A long-term term reduction of breast cancer incidence for anastrozole or any aromatase inhibitor has not been established, as it has for tamoxifen.<sup>2,3</sup> Such a result is likely to substantially improve the benefit-risk ratio, as side-effects are uncommon after treatment cessation. The objective of this study was to determine the long-term efficacy of anastrozole for preventing breast cancer (both invasive and ductal carcinoma in situ) in the post-treatment period.

## Methods

### Study design and participants

IBIS-II is an international, randomised, double-blind, placebo-controlled trial. Detailed study design and inclusion and exclusion criteria have previously been reported.<sup>4</sup> In brief, high-risk postmenopausal women aged 40–70 years were recruited between Feb 2, 2003, and Jan 31, 2012, in 153 breast cancer treatment centres across 18 countries (appendix p 3). Specific risk criteria for entry were broad and have previously been reported.<sup>4</sup> They

were designed to include women aged 45–60 years who had a relative risk of breast cancer that was at least twice as high as that in the general population, those aged 60–70 years who had a risk that was at least 1.5 times higher, and those aged 40–44 years who had a risk that was at least four times higher. The exclusion criteria were being premenopausal, previous breast cancer including ductal carcinoma in situ diagnosed more than 6 months before trial entry, current or previous tamoxifen, raloxifene, or other SERM use for more than 6 months, or participation in IBIS-I, unless off-trial therapy for at least 5 years, intention to continue using oestrogen-based hormone replacement therapy, or previous or planned prophylactic mastectomy.

The trial was approved by the UK North West Multi-Centre Research Ethics Committee and was done in accordance with the Declaration of Helsinki (1996 revision), under the principles of good clinical practice. All participants provided written, informed consent to join the study, provide baseline and follow-up blood samples, and have their past and future health records examined, including access to mammograms and pathology material.

### Randomisation and masking

Consenting eligible women were randomly assigned (1:1) to either anastrozole (1 mg per day, oral) or matching placebo daily for 5 years. Randomisation was stratified by country. All participants and medical personnel were blinded to treatment allocation, which was only held by the central study statistician. Unblinding was only permitted if the participant developed breast cancer, when a clinician considered there to be valid medical or

safety reasons, or the participant requested unblinding. Treatment allocation still remains largely blinded for investigators and participating women who have not developed breast or any other cancer (81·3% anastrozole vs 76·7% placebo,  $p=0\cdot0053$ ). A further analysis was planned to take place around 5 years after the last report,<sup>4</sup> and this analysis is provided 6 years after that report. The decision to analyse the data was made without looking at the results beforehand.

### Procedures

After treatment completion, women were followed on a yearly basis to collect data on breast cancer incidence, death, other cancers, and major adverse events (cardiovascular events, fractures). In the UK, these events were also collected through cancer registries and National Health Services (NHS Digital). In non-UK centres, annual questionnaire or annual clinic visits were used to collect these data.

### Outcomes

The primary outcome was the development of histologically confirmed breast cancer—either invasive or non-invasive (ductal carcinoma in situ). Secondary outcomes were oestrogen receptor-positive breast cancer, breast cancer mortality, other cancers, cardiovascular disease, fractures, and all-cause mortality. Exploratory analyses reported treatment effects by more detailed breast cancer type, specific baseline patient characteristics (age, body-mass index [BMI], previous use of hormone replacement therapy, and previous lobular carcinoma in situ or atypical hyperplasia), and other major cancers by site.

### Statistical analysis

All analyses were done on an intention-to-treat basis, including all randomly assigned patients. Analyses of the efficacy endpoints were based on hazard ratios (HRs) using Cox proportional hazard models,<sup>8,9</sup> with corresponding 95% CIs, and survival curves were estimated using the Kaplan-Meier method.<sup>10</sup> Only major adverse effects (other cancers, cardiovascular events, fractures, and deaths) were routinely collected after 5 years in all patients. Side-effects and secondary outcomes were compared between treatment groups using odds ratios (ORs) and Fisher exact significance tests. All  $p$  values were two-sided. All analyses were done using STATA version 15.1. This trial is registered as an International Standard Randomised Controlled Trial, number ISRCTN31488319.

### Role of the funding source

The funder of the study had no role in study design, data collection, data analysis, data interpretation, or writing of the report. The corresponding author had full access to all the data in the study and had final responsibility for the decision to submit for publication.

	Number of events, anastrozole vs placebo	Hazard ratio (95% CI)	p value	$P_{\text{heterogeneity}}^*$
Overall	85 vs 165	0·51 (0·39–0·66)	<0·0001	..
0–5 years	35 vs 89	0·39 (0·27–0·58)	<0·0001	0·087
>5 years	50 vs 76	0·64 (0·45–0·91)	0·014	..
Invasive oestrogen receptor-positive	48 vs 103	0·46 (0·33–0·65)	<0·0001	..
0–5 years	20 vs 51	0·39 (0·23–0·66)	<0·0001	0·43
>5 years	28 vs 52	0·52 (0·33–0·83)	0·0062	..
All ductal carcinoma in situ	13 vs 31	0·41 (0·22–0·79)	0·0081	..
0–5 years	5 vs 17	0·29 (0·11–0·80)	0·016	0·43
>5 years	8 vs 14	0·56 (0·23–1·32)	0·18	..

\*0–5 years vs >5 years.

Table 1: Number of breast cancer events and hazard ratios

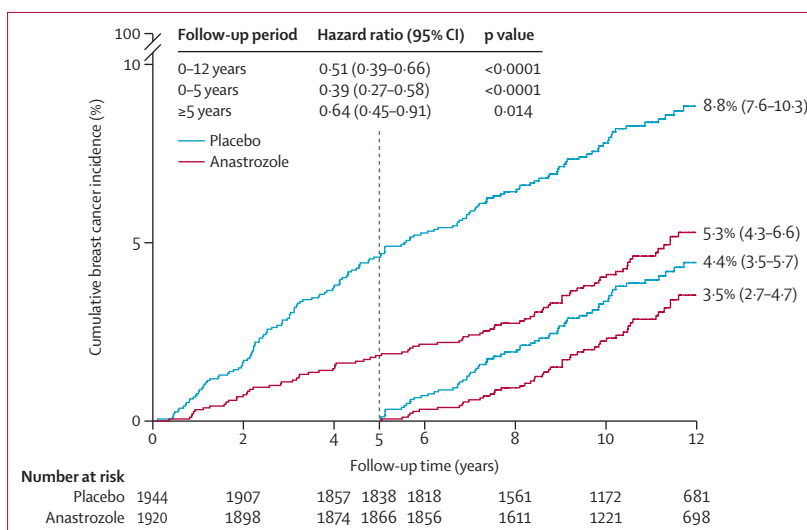
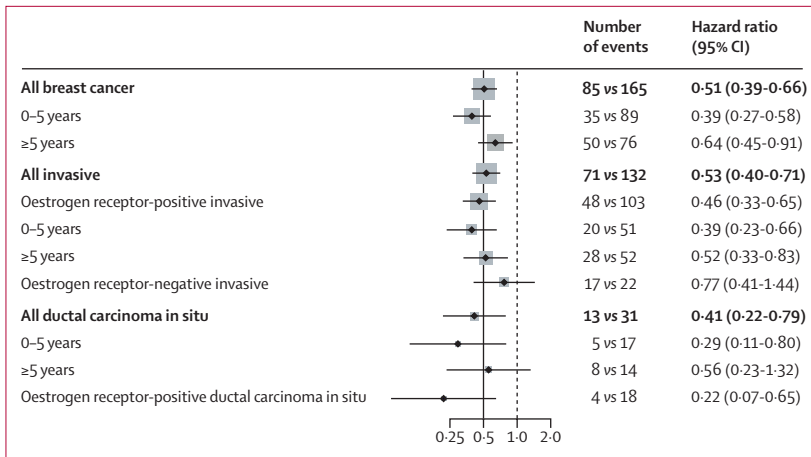


Figure 1: Cumulative incidence for all breast cancer by treatment allocation and follow-up period

### Results

All women randomly assigned to treatment (N=3864, 1920 anastrozole and 1944 placebo) have been included in this analysis. 3704 (95·9%) were still at risk of developing breast cancer after the 5-year treatment period (1866 anastrozole, 1838 placebo) and follow-up is ongoing (appendix p 3). Median follow-up for this analysis was 131 months (IQR 106–156), and 41295 women-years of follow-up have been accrued (anastrozole 20803, placebo 20491), of which 22367 women-years were accrued after 5 years of follow-up (anastrozole 11339, placebo 11028). Median age at study entry was 59·4 years (IQR 55·0–63·4), 1893 women (47·0%) had used hormone replacement therapy before entering the trial, and 2631 (68·1%) had a BMI of more than 25kg/m<sup>2</sup>. Other baseline demographics are shown in the appendix (p 1).

250 breast cancers have been reported (85 anastrozole [4·4%] vs 165 placebo [8·5%]; table 1), with a highly significant 49% reduction for all breast cancer with



**Figure 2: Hazard ratios for subgroup analyses by follow-up period**  
Grey squares indicate the amount of information available for this comparison, largely based on the number of events.

	Anastrozole N=1920, n (%)	Placebo, N=1944, n (%)	Odds ratio (95% CI)
Total	147 (7.1%)	200 (9.8%)	0.72 (0.57-0.91)
Skin	52 (2.7%)	85 (4.4%)	0.61 (0.42-0.88)
Non-melanoma	43 (2.2%)	73 (3.8%)	0.59 (0.39-0.87)
Melanoma	9 (0.5%)	12 (0.6%)	0.76 (0.28-1.97)
Gynaecological	14 (0.7%)	20 (1.0%)	0.71 (0.33-1.47)
Endometrial	5 (0.3%)	7 (0.4%)	0.72 (0.18-2.65)
Ovarian	7 (0.4%)	10 (0.5%)	0.71 (0.23-2.06)
Respiratory	13 (0.7%)	13 (0.7%)	1.01 (0.43-2.38)
Lung	11 (0.6%)	12 (0.6%)	0.93 (0.37-2.30)
Gastrointestinal	24 (1.3%)	33 (1.7%)	0.81 (0.45-1.43)
Colorectal	11 (0.6%)	16 (0.8%)	0.69 (0.29-1.60)

**Table 2: Cancers other than breast**

	Anastrozole, N=1920, all years (>5 years)	Placebo, N=1944, all years (>5 years)	Odds ratio (95% CI), all years
Fractures	380 (182)	373 (186)	1.04 (0.88-1.22)
Myocardial infarction	16 (8)	14 (8)	..
Deep vein thrombosis*	13 (6)	17 (5)	..
Pulmonary embolism	17 (11)	12 (7)	..
Transient ischaemic attack†	24 (14)	20 (9)	..
Stroke	23 (15)	17 (9)	..

\*In the absence of pulmonary embolism. †In the absence of stroke. Numbers in parentheses refer to events occurring in the post-treatment period (>5 year follow-up).

**Table 3: Major adverse events**

anastrozole (HR 0.51, 95% CI 0.39-0.66,  $p < 0.0001$ ). The reduction in incidence in the first 5 years of follow-up was 61% (0.39, 0.27-0.58,  $p < 0.0001$ ), and a smaller but still significant 37% reduction (0.64, 0.45-0.91,  $p = 0.014$ ) was seen in subsequent years, which was still larger than that seen for tamoxifen in previous trials. The effects in the two periods were not significantly different ( $p = 0.087$ ) and a Hosmer-Lemeshow test for

non-proportional hazards was not significant ( $p = 0.073$ ). After 12 years of follow-up, the estimated risk of developing breast cancer was 8.8% (IQR 7.6-10.3) in the placebo group compared with 5.3% (4.3-6.6) in the anastrozole group (figure 1), and the number needed to treat for 5 years to prevent one breast cancer was 29.

Overall 203 (81.2%) of the breast cancers were invasive, and 151 (74.4%) of these were reported as oestrogen receptor-positive. A 54% reduction in incidence with anastrozole was observed for oestrogen receptor-positive cancers (HR 0.46, 95% CI 0.33-0.65,  $p < 0.0001$ ), with a larger 61% reduction in the first 5 years (0.39, 0.23-0.66,  $p < 0.0001$ ; figure 2), followed by a 48% reduction (0.52, 0.33-0.83,  $p = 0.0062$ ). A small, non-significant reduction in incidence was observed for invasive oestrogen receptor-negative breast cancer in the anastrozole group (0.77, 0.41-1.44,  $p = 0.41$ ; figure 2). A significant reduction in incidence for anastrozole was also found for ductal carcinoma in situ (0.41, 0.22-0.79,  $p = 0.0081$ ), in particular for lesions known to be oestrogen-positive (0.22, 0.07-0.65,  $p = 0.0062$ ; figure 2).

No clear heterogeneity or trend was observed for differences in the preventive effect of anastrozole by other tumour characteristics (appendix p 2). Anastrozole reduced incidence of invasive HER2-negative cancers by 43% (HR 0.57, 95% CI 0.41-0.78), which was similar to that for invasive HER2-positive cancers (0.52, 0.23-1.17; appendix p 2).

Exploratory analyses of baseline characteristics did not show any significant heterogeneity by age, BMI, previous hormone replacement therapy use, or previous lobular carcinoma in situ or atypical hyperplasia (appendix p 2). Reductions in incidence did not differ between treatment groups for women with a BMI of more than 30 kg/m<sup>2</sup> and or who took hormone replacement therapy before trial entry.

Overall, a 28% reduction in cancer incidence at non-breast sites occurred (147 vs 200 cases, OR 0.72, 95% CI 0.57-0.91,  $p = 0.0042$ ; table 2). Secondary analyses showed that this reduction was driven largely by a reduction in the incidence of non-melanoma skin cancer (43 vs 73 cases, 0.59, 0.39-0.87,  $p = 0.0058$ ), and no effect on other specific cancers was apparent (table 2). In particular, no reduction in the incidence of endometrial cancer occurred due to oestrogen deprivation from anastrozole, although oestrogen is thought to be a major driver of this cancer.<sup>11</sup> Additionally, the early reduction seen for colorectal cancers<sup>4</sup> has not been extended with longer follow-up.

No effect was seen on any other major adverse event (table 3). In particular, there was no excess of fractures overall (380 vs 373, OR 1.04, 95% CI 0.88-1.22). A small non-significant increase in number of events during the active treatment period (198 vs 186, 1.09, 0.87-1.35) was counterbalanced by slight reduction of events after treatment was completed (182 vs 187, 0.98, 0.79-1.23). Myocardial infarctions were evenly distributed between

treatment groups (table 3), and no differences in number of events were observed in the first 5 years (eight vs eight) or in follow-up after treatment (eight vs six). Numbers of deep vein thromboses were slightly increased in the placebo group, with no differences observed in the two periods (table 3). Cases of pulmonary embolism were non-significantly more frequent with anastrozole but no differences were observed during treatment compared with after treatment (table 3). Transient ischaemic attacks and strokes were non-significantly more common with anastrozole compared with placebo (46 vs 36,  $p=0.24$ ).

Other less serious side-effects observed in the first 5 years during treatment with anastrozole,<sup>4</sup> including arthralgia, joint stiffness, hot flushes, night sweats, vulvovaginal dryness, hypertension, and dry eyes, were not collected after the 5-year treatment period. However, even within the treatment period they were most common in the first year of treatment, so it is unlikely that there will be material differences in the post-treatment period. All participants have now completed treatment and full 5-year adherence was 74.6% for anastrozole compared with 77.0% for placebo (HR 0.89, 95% CI 0.79–1.01,  $p=0.081$ ; appendix p 4), indicating that side-effects of anastrozole had little effect on treatment adherence.

139 (3.6%) women died during the study (69 anastrozole vs 70 placebo; table 4), with no difference between the two treatment groups (HR 0.96, 95% CI 0.69–1.34,  $p=0.82$ ). Overall, no effect of anastrozole was seen for breast cancer-specific mortality (three anastrozole vs two placebo), but numbers are very small. Given the small number of deaths and the relatively young median age at entry (59.4 years), substantially longer follow-up will be needed to determine whether anastrozole affects breast cancer and other cause mortality. Deaths from cancers other than breast did not differ between treatment groups ( $p=0.39$ ).

## Discussion

This updated analysis of the IBIS-II trial provides additional support for the use of anastrozole in breast cancer prevention for high-risk postmenopausal women. The large 61% reduction in breast cancer incidence in the first 5 years has been maintained in subsequent follow-up to 12 years. The significant 36% reduction during post-treatment follow-up was not significantly smaller than during treatment, and still greater than that observed for tamoxifen, which has produced a roughly constant 29% reduction for 20 years.<sup>2</sup> The number needed to treat to prevent one breast cancer during the first 12 years of follow-up was 29, which compares favourably with the 58 needed for tamoxifen at that time.<sup>2</sup> Very few deaths from breast cancer have occurred to date, but it is too early to expect an effect on this outcome, which is a limitation of this analysis. The reduction with anastrozole was primarily seen in oestrogen receptor-positive cancers, which suggests that the effect on mortality will be smaller than that for incidence. The effects were greatest for

	Anastrozole, N=1920, n (%)	Placebo, N=1944, n (%)	Hazard ratio (95% CI)
All	69 (3.6%)	70 (3.6%)	0.96 (0.69–1.34)
Breast cancer	2 (0.1%)	3 (0.2%)	0.64 (0.11–3.88)
Other cancer	27 (1.4%)	34 (1.8%)	0.77 (0.47–1.28)
Cardiovascular	13 (0.7%)	9 (0.5%)	1.41 (0.60–3.31)
Other or unknown	27 (1.4%)	24 (1.2%)	1.10 (0.63–1.91)

Table 4: Specific causes of death

oestrogen receptor-positive tumours, but an unexpected and non-significant 27% reduction was also seen for receptor-negative cancers, which will need further follow-up to validate.

The previously observed<sup>4</sup> reduction of other cancers with anastrozole, notably non-melanoma skin cancer, has continued with longer follow up. No other side-effects have been identified with longer follow-up, and the small 11% excess of fractures during the active treatment period has not continued after 5 years of follow-up. A limitation of this analysis is that routine collection of less serious side-effects was not done after the 5-year treatment period.

All women have completed the active follow-up period of the trial and now are followed for long-term outcomes by various methods. In the UK, long-term data are collected through national registries for deaths, cancers, and major predefined adverse events, so we are confident that data are complete. Additionally, we still collect data through annual questionnaires where appropriate. For international centres, annual questionnaires were used to collect information on all primary and secondary outcomes. However, data on lesser side-effects, such as hot flushes and musculoskeletal events, were only collected during the 5-year treatment period.

In conclusion, these updated results show a continuing long-term effect of 5 years of anastrozole treatment in preventing breast cancer in high-risk postmenopausal women. No new major adverse events were identified. Overall, our data substantially strengthen the findings from our initial report after 5 years of follow-up.<sup>4</sup> In the UK, the National Institute for Health and Care Excellence has now recommended the use of anastrozole for breast cancer prevention in high-risk postmenopausal women,<sup>12</sup> and in the USA, the US Preventive Services Task Force has also supported its use.<sup>13</sup> The benefits of anastrozole, in terms of the reduction in risk of breast cancer in high-risk postmenopausal women, extend beyond the 5-year treatment period.

### Contributors

JC, JFF, MD, SC, REM, SL, BB, and AH designed the study. JC, JFF, SC, REM, SL, BB, DGE, and AH collected data. IS and JC analysed the data and wrote the report. All authors interpreted the data.

### Declaration of interests

JC reports grants from AstraZeneca, during the conduct of the study, and personal fees and royalties through Queen Mary University of London from Myriad Genetics, outside the submitted work. IS reports

personal fees from Myriad Genetics, Nanostring Technologies, and Pfizer, outside the submitted work. MD reports personal fees personal fees and royalties through the Institute for Cancer Research for development of abiraterone from Radius, AbbVie, G1 Technologies Orion, and H3 Biomedicine, personal fees from Myriad Genetics, and Nanostring Technologies, and grants from Pfizer and Radius, all outside the submitted work. SL reports personal fees from AstraZeneca, Celgene, and Puma Samsung, grants and personal fees from Pfizer, Novartis, and Roche, and grants from Cepheid and Amgen, all outside the submitted work. DGE reports personal fees from AstraZeneca. All other authors declare no competing interests.

#### Data sharing

Data will be available according to IBIS-II's data sharing plan. Requests for specific analyses or data can be submitted by email to j.cuzick@qmul.ac.uk. Details for data sharing policy and application process can be found on the website of Queen Mary University London.

#### Acknowledgments

This study was funded by Cancer Research UK (C569/A5032), the National Health and Medical Research Council Australia (GNT300755, GNT569213), the Breast Cancer Research Foundation (EMSR1C3R), Manchester National Institute for Health Research Biomedical Research Centre (IS-BRC-1215-20007), Sanofi Aventis, and AstraZeneca. AstraZeneca provided anastrozole and matching placebo. The study sponsor was Queen Mary University of London.

#### References

- 1 Cuzick J, Sestak I, Bonanni B, et al. Selective oestrogen receptor modulators in prevention of breast cancer: an updated meta-analysis of individual participant data. *Lancet* 2013; **381**: 1827–34.
- 2 Cuzick J, Sestak I, Forbes JF, et al. Anastrozole for prevention of breast cancer in high-risk postmenopausal women (IBIS-II): an international, double-blind, randomised placebo-controlled trial. *Lancet* 2014; **383**: 1041–48.
- 3 Goss PE, Ingle JN, Ales-Martinez JE, et al. Exemestane for breast-cancer prevention in postmenopausal women. *N Engl J Med* 2011; **364**: 2381–91.
- 4 Cuzick J, Sestak I, Cawthorn S, et al. Tamoxifen for prevention of breast cancer: extended long-term follow-up of the IBIS-1 breast cancer prevention trial. *Lancet Oncol* 2015; **16**: 67–75.
- 5 Cuzick J, Sestak I, Baum M, et al. Effect of anastrozole and tamoxifen as adjuvant treatment for early-stage breast cancer: 10-year analysis of the ATAC trial. *Lancet Oncol* 2010; **11**: 1135–41.
- 6 Coates AS, Keshaviah A, Thurlimann B, et al. Five years of letrozole compared with tamoxifen as initial adjuvant therapy for postmenopausal women with endocrine-responsive early breast cancer: update of study BIG 1–98. *J Clin Oncol* 2007; **25**: 486–92.
- 7 Powles TJ, Ashley S, Tidy A, Smith IE, Dowsett M. Twenty-year follow-up of the Royal Marsden randomized, double-blinded tamoxifen breast cancer prevention trial. *J Natl Cancer Inst* 2007; **99**: 283–90.
- 8 Cox D. Analysis of survival data. New York: Chapman & Hall, 1984.
- 9 Cox DR. Regression models and life tables. *J R Stat Soc* 1972; **34**: 187–220.
- 10 Kaplan EL, Meier P. Nonparametric estimation from incomplete observations. *J Am Stat Assoc* 1958; **53**: 457–81.
- 11 Cook LS, Weiss NS, Doherty JA. Endometrial cancer In: Thun MJ, Linet MS, Cerhan JR, Haiman C, Schottenfeld D, eds. Cancer epidemiology and prevention, 4th edn. Oxford: Oxford University Press, 2017: 909–24.
- 12 NICE. Familial breast cancer: classification, care and managing breast cancer and related risks in people with a family history of breast cancer. National Institute for Health and Care Excellence, 2013. <https://www.nice.org.uk/guidance/cg164/resources/familial-breast-cancer-classification-care-and-managing-breast-cancer-and-related-risks-in-people-with-a-family-history-of-breast-cancer-pdf-35109691767493> (accessed Nov 29, 2019).
- 13 Nelson HD, Fu R, Zakher B, Pappas M, McDonagh M. Medication use for the risk reduction of primary breast cancer in women: updated evidence report and systematic review for the US Preventive Services Task Force. *JAMA* 2019; **322**: 868–86.

For Queen Mary University London's data sharing policy see [www.qmul.ac.uk/wolfson/centres/ccp/data-sharing](http://www.qmul.ac.uk/wolfson/centres/ccp/data-sharing)

# THE LANCET

## Supplementary appendix

This appendix formed part of the original submission and has been peer reviewed.  
We post it as supplied by the authors.

Supplement to: Cuzick J, Sestak I, Forbes JF, et al. Use of anastrozole for breast cancer prevention (IBIS-II): long-term results of a randomised controlled trial. *Lancet* 2019; published online Dec 12. [http://dx.doi.org/10.1016/S0140-6736\(19\)32955-1](http://dx.doi.org/10.1016/S0140-6736(19)32955-1).

**Supplementary Table 1: Number of breast cancer events and hazard ratios according to treatment allocation and follow-up period.**

	<b>Anastrozole (N=1920)</b>	<b>Placebo (N=1944)</b>
Age (years), median (IQR)	59.5 (55.0-63.5)	59.4 (55.1-66.3)
Age at menarche (years), median (IQR)	13.0 (12.2-14.0)	13.0 (12.2-14.0)
Age at first child birth (years), median (IQR)	24 (21-27)	24 (21-27)
Age at menopause (years), median (IQR)	50 (45-52)	49 (45-52)
BMI, kg/m <sup>2</sup>	27.4 (24.2-31.1)	27.3 (24.4-31.2)
Previous HRT use	893 (47.0%)	910 (47.2%)
Hysterectomy	631 (33.2%)	656 (34.0%)
<b>Family history (non-exclusive)</b>		
Two or more relatives with breast/ovarian cancer	956 (49.8%)	938 (48.3%)
One relative with breast cancer at age ≤ 50	675 (35.3%)	653 (33.7%)
One relative with bilateral breast cancer	166 (8.6%)	141 (7.3%)
LCIS/Atypical hyperplasia	154 (8.0%)	190 (9.8%)
DCIS (treated with mastectomy)	160 (8.3%)	166 (8.5%)

IQR=Interquartile Range, kg=kilogram, m=meter, LCIS=lobular carcinoma in situ, DCIS=ductal carcinoma in situ

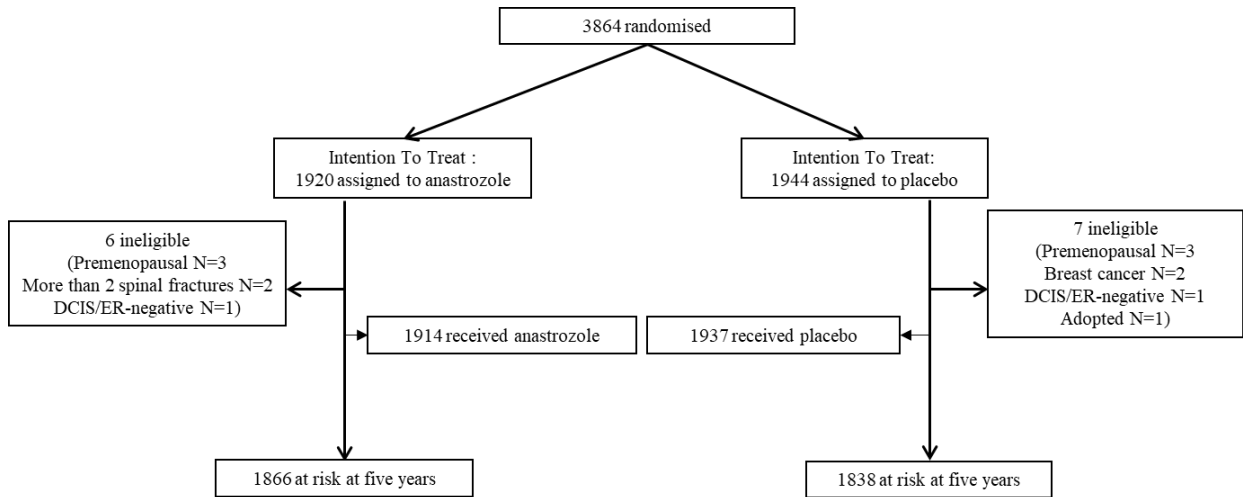


**Supplementary Table 2: Number of invasive breast cancer events and hazard ratios according to treatment allocation and subgroups.**

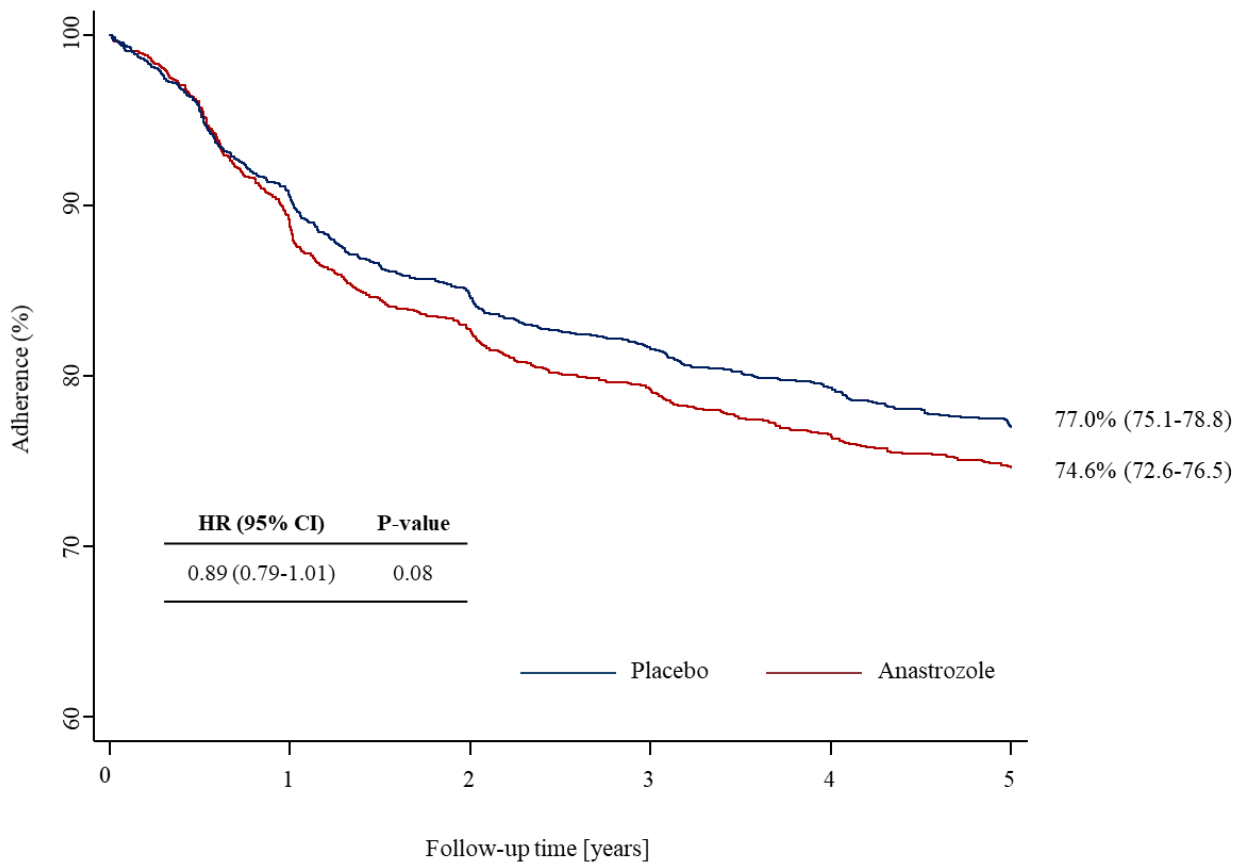
	Number of events (anastrozole vs. placebo)	HR (95% CI)	P- heterogeneity/P- trend (1df)
<b>Nodal status</b>			
Negative	35 vs. 88	0.39 (0.27-0.58)	0.083
Positive	26 vs. 32	0.80 (0.48-1.34)	
<b>Tumour grade</b>			
Low	14 vs. 17	0.81 (0.40-1.65)	0.18
Intermediate	33 vs. 72	0.45 (0.30-0.68)	
High	21 vs. 39	0.53 (0.31-0.91)	
<b>Tumour size</b>			
≤ 10mm	17 vs. 41	0.41 (0.23-0.72)	0.31
10-20mm	26 vs. 48	0.53 (0.33-0.86)	
> 20mm	28 vs. 43	0.64 (0.40-1.03)	
<b>HER2 status</b>			
Negative	58 vs. 101	0.57 (0.41-0.78)	0.86
Positive	9 vs. 17	0.52 (0.23-1.17)	
<b>Age</b>			
≤ 55 years	17 vs. 32	0.51 (0.28-0.91)	0.5
55-60 years	13 vs. 44	0.32 (0.17-0.59)	
> 60 years	41 vs. 56	0.70 (0.47-1.05)	
<b>BMI</b>			
≤ 25 kg/m <sup>2</sup>	17 vs. 28	0.59 (0.32-1.07)	0.66
25-30 kg/m <sup>2</sup>	27 vs. 45	0.61 (0.38-0.98)	
>30 kg/m <sup>2</sup>	27 vs. 57	0.46 (0.29-0.73)	
<b>HRT</b>			
Never	36 vs. 74	0.48 (0.32-0.71)	0.46
Prior	35 vs. 58	0.60 (0.39-0.91)	
<b>Benign breast disease</b>			
LCIS or AH	8 vs. 23	0.34 (0.15-0.77)	0.21
No LCIS or AH	63 vs. 109	0.57 (0.42-0.78)	

HR=Hazard Ratio, CI=Confidence Intervals, df=degrees of freedom, BMI=Body Mass Index, LCIS=Lobular Carcinoma in Situ, AH=Atypical Hyperplasia, HRT=Hormonal Replacement Therapy

**Supplementary Figure 1: CONSORT diagram**



**Supplementary Figure 2: Five-year adherence (%) according to treatment allocation.**



## Appendix

### Independent Trial Steering Committee:

Richard Sainsbury – Chairman (IOW NHS Trust; London, United Kingdom)  
Judy Garber (Dana Farber Cancer Institute, Boston, United States)  
Nick Zdenkowski (University of Newcastle, Newcastle, Australia)  
Rhian Gabe (Centre for Cancer Prevention, Queen Mary University, London, United Kingdom)

### Principal Investigators and Local Coordinators:

Vesna Bjelic-Radicic, Dept. of Obstet. and Gynecology, Graz, Austria  
Michael Fridrik, General Hospital Linz, Linz, Austria  
Manuela Gili, Austria National Coordinating Centre, Austria  
Richard Greil, Third Medical Dept., Salzburg, Austria  
Verena Göschl, Austria National Coordinating Centre, Austria  
Dietmar Heck, Ordensklinikum Linz Barmherzige Schwestern, KH BHS Linz - Department Chirurgische Abteilung, Austria  
Wilfried Horvath, Dept. of Surgery, Gussing, Austria  
Raimund Jakesz, Department of Surgery, Vienna University Medical School, Vienna, Austria  
Petra Luft, Salzburg Cancer Research Institute (SCRI) Center for Clinical Cancer and Immunology Trials (CCCIT), Salzburg, Austria  
Angela Ramoni, Dept. of Obst. and Gyn, Innsbruck, Austria  
Arno Reichenauer, Dept. of Surgery, Sankt Veit, Austria  
Christian Singer, Medical University of Vienna, Department Allgemeine Gynäkologie, Medical University of Vienna, Austria  
Katharina Steiner, Austrian Breast and Colorectal Cancer Study Group, Austria National Coordinating Centre, Austria  
Michael Stierer, Univ. Prof. Dr. Michael Stierer, Austria National Coordinating Centre, Austria  
Josef Thaler, Hospital Klinikum Kreuzschwestern Wles, Oberösterreich, Austria  
Thomas Thurwachter, Austria National Coordinating Centre, Austria  
Ursula Wieder, Brustzentrum Hanusch-KH, Department Chirurgie/Gynäkologie, Brustzentrum Hanusch-KH, Department Chirurgie/Gynäkologie, Austria  
Ehtesham Abdi, The Tweed Hospital, New South Wales, Australia  
Sandra Allen, Nambour, Queensland, Australia  
Test Anzmco, Newcastle, Australia  
Anne Arruzza, Liverpool, New South Wales, Australia  
Heath Badger, Dept of Surgical Oncology, ANZBCTG, Newcastle, Australia  
Caroline Baker, Mercy Private Hospital / Victorian Breast & Oncology Care, Victoria, Australia  
Geoffrey Beadle, Royal Brisbane Hospital, Queensland, Australia  
Ian Bennett, Princess Alexandra Hospital, Queensland, Australia  
Angela Benson, Victorian Breast & Oncology Care / Mercy Private Hospital, Victoria, Australia  
Robert Blum, Bendigo Health, Victoria, Australia  
Adam Boyce, Lismore Base Hospital, New South Wales, Australia  
Fran Boyle, Mater North Sydney, North Sydney, Australia  
Karen Briscoe, Coffs Harbour Health Campus, New South Wales, Australia  
Kelsey Bumford, Peter MacCallum Cancer Centre, Victoria, Australia  
Sonia Byrne, Lismore Base, New South Wales, Australia  
Jenny Campbell, Royal Brisbane, Queensland, Australia  
Hugh Carmalt, New South Wales, Australia  
Margaret Chamen, Tamworth Rural Referral Hospital, New South Wales, Australia  
Anupam Chaudhuri, Riverina Cancer Care Centre - DCIS, New South Wales, Australia  
Sharon Clark, The Tweed Hospital, New South Wales, Australia  
David Clark, The Breast Centre, New South Wales, Australia  
Amy Clark, Bendigo Health, Victoria, Australia  
Vicki Clowes, Goulburn Valley, Victoria, Australia  
John Collins, Royal Melbourne Hospital, Melbourne, Australia  
Annette Cubitt, Royal Brisbane, Queensland, Australia  
Giuliana D'Aulerio, Sir Charles Gairdner, Western Australia, Australia  
Rachel Dear, St Vincents Sydney, New South Wales, Australia

Stephen Della-Fiorentina, Southern Highlands, New South Wales, Australia  
Stephen Della-Fiorentina, Southern Highlands, New South Wales, Australia  
Jennifer Donovan, Royal North Shore Hospital, New South Wales, Australia  
Michael Donovan, Nambour General Hospital, Queensland, Australia  
Karin Dunne, The Tweed, New South Wales, Australia  
Jane Eade, Griverina cancer care centre, New South Wales, Australia  
Emma Eagles, Southern Highlands Cancer Centre, New South Wales, Australia  
Melissa Fox, Macarthur, New South Wales, Australia  
Nicole Francis, Breast Cancer Trials, Newcastle, Australia  
Sonya Gibbons, Lismore Base, New South Wales, Australia  
Peter Grantley Gill, Royal Adelaide Hospital, South Australia, Australia  
Rebecca Griffiths, Tamworth Rural Referral Hospital, New South Wales, Australia  
Donna Haberl, Victoria, Australia  
Stewart Hart, Monash Medical Centre, Victoria, Australia  
Terri Hartweger, Monash University, Eastern Clinical School, Victoria, Australia  
Danielle Harward, Southern Highlands, New South Wales, Australia  
Claire Haworth, Sr Charles Gairdner, Western Australia, Australia  
Jasmine Hee, St Vincents, Melbourne, Victoria, Australia  
Jane Hill, Riverina Cancer Care Centre, New South Wales, Australia  
Rosemary Hurley, ANZNB, New South Wales, Australia  
Jeralyn Jacquet, Southern Highlands, New South Wales, Australia  
Jennifer Jagoe, Southern Highlands, New South Wales, Australia  
Catherine Johnso12, Austin Health, Victoria, Australia  
Lynne Jolly, St Vincent's Sydney, New South Wales, Australia  
David Joseph, Sir Charles Gardiner Hospital, Western Australia, Australia  
George Kannourakis, Victoria, Australia  
Sophie Katsabanis, Peter MacCallum, Victoria, Australia  
Lauren Keller, Melbourne, Australia  
Charlene Kobas, Princess Alexandra, Queensland, Australia  
Carolyn Kwong, Royal North Shore, New South Wales, Australia  
Mari Lashbrook, Riverina, New South Wales, Australia  
Michael Law, Maroondah, Victoria, Australia  
Ingrid Laycock, Breast Cancer Trials, Newcastle, Australia  
Lisa Leopardi, Royal Adelaid, South Australia, Australia  
Marian Lieschke, Royal Melbourne, Melbourne, Australia  
Jennifer Liu, Victoria, Australia  
Yali Liu, Austin Health, Victoria, Australia  
Mona Martyn-Smith, Mater, North Sydney, Australia  
Gavin Marx, San Clinical Trials, New South Wales, Australia  
Richard Masters, Box Hill Hospital, Victoria, Australia  
Andrea Mckenzie, Royal Brisbane, Queensland, Australia  
Narelle Mcphee, Bendigo Health, Victoria, Australia  
Lauren Mitchell, Victoria, Australia  
Carole Mott, Goulburn Valley, Victoria, Australia  
Eugene Moyland, Liverpool, New South Wales, Australia  
Michelle Nottage, Royal Brisbane, Queensland, Australia  
Felicity Osmond, Victoria, Australia  
Nick Pavlakis, Armidale Hospital, New South Wales, Australia  
Kelly-Anne Phillips, Peter Mac Callum Cancer Centre, Victoria, Australia  
Annabel Pickett, Coffs Harbour, New South Wales, Australia  
Samara Price, Macarthur Cancer Therapy Centre, New South Wales, Australia  
Wendy Pritchard, Royal Brisbane, Queensland, Australia  
Nadia Ranieri, St Vincent's Melbourne, Victoria, Australia  
Kathryn Rebellato, New South Wales, Australia  
Jessica Reid, Royal Adelaide Hospital, South Australia, Australia  
Hollie Ritchie, Calvary Mater Newcastle, New South Wales, Australia  
Natasha Roberts, Royal Brisbane, Queensland, Australia  
Kayte Robinson, Victorian Breast & Oncology Care/Mercy Private Hospital, Victoria, Australia  
Rachael Rowse, The Tweed Hospital, New South Wales, Australia  
Amanda Rundle, Bendigo Health, Victoria, Australia

Suzanne Ryan, Nambour, Queensland, Australia  
Suma Santhosh, Macarthur, New South Wales, Australia  
Frank Sardelic, Tamworth Hospital, New South Wales, Australia  
Christobel Saunders, Sir Charles Gairdner Hospital, Western Australia, Australia  
Eva Segelov, New South Wales, Australia  
Kimberley Sheather, Mater, North Sydney, Australia  
Judith Silcock, Breast & Endocrine Centre, New South Wales, Australia  
Cassandra Simon, Coffs Harbour Health Campus; ANZNC, New South Wales, Australia  
Nina Singh, San Clinical Trials, New South Wales, Australia  
Joanne Smith, Coffs Harbour, New South Wales, Australia  
Raymond Snyder, St Vincent's Hospital Melbourne, Victoria, Australia  
Victoria Sproule, Calvary Mater Newcastle, New South Wales, Australia  
Amy Tang, Box Hill Hospital, Victoria, Australia  
Javier Torres, Goulburn Valley, Victoria, Australia  
Krystine Walsh, Maroondah, Victoria, Australia  
Shane White, Austin Heath, Victoria, Australia  
Stephen Wilkinson, Royal Hobart Hospital, Hobart, Australia  
Nicholas Zdenkowski, New South Wales, Australia  
Inneke Bambust, Dendermonde, Belgium  
Barbara Beier, Brussels, Belgium  
Martine Berliere, Brussels, Belgium  
Nathalie Blondeel, Brussels, Belgium  
Magda Boels, Borstkliniek, Laarbeeklaan, Brussel, Belgium  
Ilse Claessens, Aalst, Belgium  
Dominique Crasson, Namen, Belgium  
Lionel D'Hondt, Godinne, Belgium  
Luc Dirix, Wilrijk, Belgium  
Frederic Forget, Libramont, Belgium  
Francoise Henry, Brussels, Belgium  
Marc L'Hermite, Brussels, Belgium  
Jan Lamote, Borstkliniek, Laarbeeklaan, Brussel, Belgium  
Fabienne Lieben, Brussels, Belgium  
Patrick Neven, University Hospitals, Leuven, Belgium  
Jean-Marie Nogaret, Rue Héger Bordet 1 Brussels, Brussels, Belgium  
Guy Orye, Campus Virga Jesse, Hasselt, Belgium  
Heidi Roelstrate, Aalst, Belgium  
Monique Seret, Namen, Belgium  
Phillipe Simon, Brussels, Belgium  
Daisy Supply, University Hospitals Leuven, Leuven, Belgium  
Marijke Tollenaers, Secretariaat gynaecologie, Genk, Belgium  
Sofie Tombeur, Aalst, Belgium  
Ann Tullen, Hasselt, Belgium  
Jos Vlasselaer, Genk, Belgium  
Sophie Vrancken, Wilrijk, Belgium  
Margit Bachmann, Thun, Switzerland  
Barbara Bolliger, Tumor- und Brustzentrum ZeTuP, Switzerland  
Markus Borner, Bern, Switzerland  
Farzaneh Borner, Inselspital Bern Universitätsklinik für Medizinische Onkologie, Bern, Switzerland  
Susanne Bucher, Luzerner Kantonsspital, Neue Frauenklinik Brustzentrum, Switzerland  
Pierre O. Chappuis, Unité d'oncogénétique et de prévention des cancers, Service d'Oncologie, HUG, Genève, Switzerland  
Bénédicte Fleury, Centre Pluridisciplinaire d'Oncologie, CHUV - PAV 02-12, Genève, Switzerland  
Marie Galmiche, Switzerland  
Agnes Glaus, Centre for Tumour Detection and Prevention, Switzerland  
Claudia Guebelin, Bern, Switzerland  
Stephanie Largiader, Switzerland  
Olivia Pagani, IOSI - Ospedale Regionale Bellinzona e Valli, Switzerland  
Manuela Rabaglio, Klinik und Poliklinik für Medizinische Onkologie, Inselspital Bern, Bern, Switzerland  
Daniel Rauch, Onkologiezentrum Thun, Spital STS AG, Thun, Switzerland  
Khalil Zaman, Centre pluridisciplinaire d'oncologie, CHUV, Switzerland

Marcela Fritis, Fundacion Arturo Lopez Perez, Santiago, Chile, Chile  
Jorge Gamboa, Santiago, Chile, Chile  
Bettina Muller, Chilean Cooperative Group for Oncologic Research (GOCCHI), Chile National Coordinating Centre, Chile  
Octavio Peralta, c/o GOCCHI, Chile National Coordinating Centre, Chile  
Ricardo Schwartz, Hospital Militar, Santiago, Chile, Chile  
Sebastian Sole, Santiago, Chile, Chile  
Zdenka Zlatar, Chilean Cooperative Group for Oncologic Research (GOCCHI), Chile National Coordinating Centre, Chile  
Oberhoff, Katholische Kliniken Essen-Nord, Germany  
B. Aktas, Germany  
Andrea Stefek, Germany  
Anke J. Kleine-Tebbe, Germany  
Doris Augustin, Klinikum Deggendorf, Mammazentrum, Germany  
Baake, Onkologische Gemeinschaftspraxis, Germany  
Baerens, Frauenarztpraxis, Frauenheilkunde und Geburtshilfe, Germany  
Leila Bauer, Germany  
Baumann, Universitätsklinikum, Frauenklinik Mutter-Kind-Zentrum, Germany  
Beldermann, Germany  
Michael Berghorn, Germany  
Peter/ Bern Schleicher, Praxis Dr. Bern + Peter Schleicher, Germany  
Breitbach, Krankenhaus Neunkirchen GmbH, Germany  
Brucker, Klinikum Nuernberg, Brustzentrum, Germany  
Oa Camara, Universitätsklinikum Jena, Germany  
Klaus Christl, Krankenhaus Eggenfelden, Frauenklinik, Germany  
Christoph Mundhenke, Universitaetsklinikum Schleswig-Holstein, Campus Kiel, Germany  
Dall, Germany  
Mustafa Deryal, Germany  
Doreen Düchting, Germany  
Elena Langer, Germany  
G Emons, Universitätsklinikum, Göttingen, Germany  
Eva Stauß, Germany  
Petra Feer, GBG Forschungen GMBH, German National Coordinating Centre, Germany  
Gerhard Nohe, Germany  
Ioannis Gkantiragas, GBG Forschungen GmbH, German National Coordinating Centre, Germany  
Karsten Gnauert, Aalen, Germany  
Kay Goerke, Germany  
Sabine Gross, Marienhospital, Stuttgart, Germany  
Göhring, Johanniter-Krankenhaus, Frauenklinik, Germany  
Kornelia Göhring, Germany  
Hans-Christian Kolberg, Marienhospital, Gynaekologie und Geburtshilfe, Germany  
Heinrich, Praxis Dr. Heinrich, Onkol. Schwerpunktpraxis fuer Gynaekologie, Germany  
M. Herwig, Germany  
Ursula Hille, Medizinische Hochschule, Brustzentrum, Germany  
Hindenburg, Gynäkologisch-Onkologische Schwerpunktpraxis, Germany  
Thomas Hitschold, Germany  
Hoeffkes, Klinikum Fulda, MVZ Osthessen/Studienbuero, Germany  
Hoffmann, St. Josefshospital, Germany  
Kaufmann, Universitaetsklinikum, Frauenklinik, Germany  
P Klare, Praxisklinik Krebsheilkunde für Frauen, Germany  
Philip Knapp, German National Coordinating Centre, Germany  
Koehne, Klinikum Oldenburg, Klinik fuer Innere Medizin II/Onkol. Tagesklinik, Germany  
Petra Krabisch, Klinikum Chemnitz, Germany  
Uwe Kullmer, Germany  
G Köhler, Universitätsklinikum, Greifswald, Germany  
C.-H. Köhne, Germany  
H Kölbl, Universitätsklinikum Mainz, Germany  
Sabine Lemster, Germany  
L. Liedtke, Germany  
Cornelia Liedtke, Germany

Lindner (Coop Carstensen), Krankenhaus Elim, Germany  
Frederik Marmé, Universitätsklinikum Heidelberg, NCT, Germany  
B. Ataseven, Germany  
Gunter Von Minckwitz, GBG Forschungs GMBH, German National Coordinating Centre, Germany  
Splitt, Facharzt f. Frauenheilkunde u. Geburtshilfe, Germany  
Meinerz, St. Vincenz Krankenhaus GmbH, Gynaekologische Ambulanz, Germany  
Volkmar Müller, Germany  
Thomas Noesselt, Kreiskrankenhaus Hameln, Frauenklinik/Onkol. Ambulanz, Germany  
Paepke, Klinikum rechts der Isar der Techn. Univ. München, Germany  
Pourfard/Uleer, Gemeinschaftspraxis Hildesheim, Frauenheilkunde und Geburtshilfe, Germany  
Bauer, Brustzentrum Suedbaden, Germany  
Beckmann, Friedrich-Alexander-Universität, Germany  
Costa, Otto-von-Guericke-Universitaet, Germany  
Distler, Technische Universität Dresden, Germany  
Sommer, I. Universitäts-Frauenklinik, Germany  
Thomssen, Klinikum der Med. Fakultät, Germany  
Tulusan, Klinikum Bayreuth, Germany  
Ulmer, Staedt. Klinikum Karlsruhe, Germany  
Andreas Rempen, Schwäbisch Hall, Germany  
Rezai, Brustzentrum Luisenkrankenhaus Duesseldorf, Germany  
Rita Schmutzler, Universitaetsklinikum Koeln, Frauenklinik, Germany  
Henning Ritter, Pius-Hospital Oldenburg, Frauenklinik, Germany  
Scharl, Klinikum St. Marien Amberg, Germany  
Schindelin, Dr.-Horst-Schmidt-Kliniken GmbH, Germany  
Sabine Schmatloch, Germany  
A Schneider, Germany  
Claudia Schumacher, St. Elisabeth Krankenhaus, Brustzentrum Koeln-Hohenlind, Germany  
Schwenzer, Klinikum Dortmund, Frauenklinik, Germany  
Anne Schwiebus, Germany  
Stephan Seitz, Germany  
Thomas Steck, Klinikum Passau, Frauenklinik, Germany  
Dirk Strumberg, Germany  
Tesch, Onkologie Bethanien/Marien-Krankenhaus, Germany  
Toralf Reimer, Germany  
Volker Hanf, Klinikum Fuerth, Frauenklinik, Germany  
Erich Weiss, Klinikum Sindelfingen-Boeblingen GmbH, Brustzentrum der Frauenklinik, Germany  
W Weist, Katholisches Klinikum Mainz/St. Vinzenz, Germany  
Wolfgarten, Germany  
Zahm, Brustzentrum Ostthueringen am SRH Waldklinikum Gera, Germany  
Louise Bjørn, AALBORG SYGEHUS, Denmark  
Charlotte Langg, Herlev University Hospital, Denmark  
Jens Peter Garne, Aalborg Hospital, Breast Surgery Department, Denmark  
Tiina Palva, Pirkanmaa Cancer Society, Tampere, Finland  
Marjo Virkki, Tampere/Finland, Tampere, Finland  
Leslie Ardilouze, Institut Bergonié, Bordeaux, France  
Aude Barbier, Institut Gustave Roussy, Villejuif, France  
Célia Baylac, France  
Ahmed Benyoucef, Centre Henri Becquerel, Rouen, France  
Jean Pierre Bergerat, Département Hémato-Oncologie, France  
Olivier Bernard, Agen, France  
Dominique Berton-Rigaud, ICO René Gauducheau, Nantes, France  
Virginie Birr, Hôpital Emile Muller, France  
Gabrielle Blanche, CENTRE PAUL STRAUSS, France  
Nathalie Bonichon - Lamicchane, CT Bordeaux, France  
Delphine Brunie, France  
Abdesslam Chajara, Brest, France  
Céleste David, Institut Sainte Catherine, France  
Francesco Del Piano, France  
Sengul Deveci, France  
Nadine Dohollou, France



Claire Dovergne, Unicancer, Paris FNCLCC, France  
Anne-Marie Elgard-Maitre, Hôpital Emile Muller, France  
Myriam Estrabaut, Institut Claudius Regaud, France  
Hélène Etienne, Hôpitaux Universitaires de Strasbourg, France  
Jean-Christophe Eymard, Institut Jean Godinot, Reims, France  
Marie-Josèphe Foucher-Goudier, Centre Hospitalier de Bretagne Sud, France  
Danièle Fric, Daniel Institute Hollard Level 1, France  
Sara Garcia, Paris FNCLCC, France  
Sylvia Giard-Lefevre, Centre Oscar Lambret, Lille, France  
Laurence Gladieff, Institut Claudius Regaud, France  
Anais Grilo, Centre Georges-François Leclerc, Dijon, France  
Hayat Guezi, Brest, France  
Flora Hernandez, France  
Mahmoud Ibrahim, CENTRE HOSPITALIER RÉGIONAL D'ORLÉANS, France  
Gaelle Kergoat, Centre Eugène Marquis, Rennes, France  
Gaëlle Landry, France  
Mariella Le Saux, Centre Hospitalier de Bretagne Sud, France  
Béregère Legendre, Centre Oscar Lambret, Lille, France  
Christelle Levy, Center François Baclesse, Caen, France  
Hélène Maduzio, Unicancer, Paris FNCLCC, France  
Hugo Marsiglia, Institut Gustave Roussy, Villejuif, France  
Adina Marti, France  
Severine Maury, ICO René Gauducheau, Nantes, France  
Reda Mesnaria, Centre Hospitalier de Lagny, Lagny-sur-Marne, France  
Brahim Ouahrani, CENTRE HOSPITALIER RÉGIONAL D'ORLÉANS, France  
Corinne Penaud, R&D UNICANCER, France  
Lynda Pervieux, Hôpital Dupuytren, France  
Erouan Petit, Centre Georges-François Leclerc, Dijon, France  
Thierry Petit, Centre Paul Strauss, France  
Giles Piot, Clinique des Ormeaux, France  
Cassandra Porebski, France  
Lucie Randazzo, Agen, France  
Olivier Rastelli, Centre Henri Becquerel, Rouen, France  
Armelle Rollet, Institut Sainte Catherine, France  
Daniel Serin, Institut Sainte-Catherine, France  
Hélène Simon Swirsky, Brest, France  
Valery Tardy, Clinique des Ormeaux, France  
Caroline Toussaint, Centre Hospitalier de Lagny, Lagny-sur-Marne, France  
Magali Tsachiris, CT Bordeaux, France  
Nicole Tubiana-Mathieu, Hôpital Dupuytren, France  
Christine Tunon De Lara, Institut Bergonié, Bordeaux, France  
Aude Willerval, France  
Abigail Alford, Breast Cancer Unit, Castle Hill Hospital, Cottingham, United Kingdom  
Amit Bahl, Bristol RI, United Kingdom  
Rehana Bakawala, Cheltenham General Hospital, Cheltenham, United Kingdom  
Jenny Baker, Cancer Research Team, York, United Kingdom  
Rachel Barnsley, Research & Innovation, Poole, United Kingdom  
Urmila Barthakur, Clinical Oncology, Yeovil, United Kingdom  
Imogen Batty, Surgical Directorate, Royal Bournemouth Hospital, Bournemouth, United Kingdom  
Kate Beesley, Clinical Research Unit, Yeovil, United Kingdom  
Gian Filippo Bertelli, Singleton Clinical Trials Unit, Singleton Hospital, Swansea, United Kingdom  
Sarah Bevins, Bristol Breast Care Centre, Bristol, United Kingdom  
Kirsty Bracewell, Brighton, United Kingdom  
Lynne Bradshaw, Bristol Breast Care Centre, Bristol, United Kingdom  
Maria Bramley, Department of General Surgery, Oldham, United Kingdom  
Lynne Breeze-Jones, South West Wales Cancer Institute, Swansea, United Kingdom  
James Bristol, Department of Surgery, Cheltenham General Hospital, Cheltenham, United Kingdom  
Hayley Brooks, Oncology Research Team, Manchester, United Kingdom  
Nigel Bundred, South Manchester University Hospital, Academic Surgery, Manchester, United Kingdom  
Lucy Cadmore, Plymouth, United Kingdom

Amitabha Chakrabarti, Dorchester, United Kingdom  
Sankaran Chandrasekharan, Essex Rivers Healthcare Trust, Essex County Hospital, Colchester, United Kingdom  
Jill Chittock, Gloucestershire Research Team, Focus Research Centre, Cheltenham General Hospital, Cheltenham, United Kingdom  
Angela Chrisopoulou, The Nightingale Centre, Manchester, United Kingdom  
Shirley Cocks, Clinical Research Team Davenport House, Bolton, United Kingdom  
Karen Combe, Edinburgh Breast Unit, Edinburgh, United Kingdom  
Hilary Congdon, Oncology Clinical Trials Unit, Plymouth, United Kingdom  
Adam Critchley, Newcastle-Upon-Tyne, United Kingdom  
Andrea Croucher, Frimley, United Kingdom  
Helen Cumming, Stefani Unit, Ninewells Hospital, Dundee, United Kingdom  
Ramsey Cutress, Cancer Research UK Centre, Southampton, United Kingdom  
Mariella D'Alessandro, Clinical Genetics Centre, Aberdeen, United Kingdom  
Raouf Daoud, Frimley Park Hospital NHS Trust, Frimley, United Kingdom  
Eileen Dillon, Belfast, United Kingdom  
Tracey Dobson, Oncology Research - Queen Alexandra Hospital, Portsmouth, United Kingdom  
Susan Downer, Royal Devon and Exeter Hospital, Exeter, United Kingdom  
Philip Drew, Royal Cornwall Hospital, Truro, United Kingdom  
Sidharth Dubey, Derriford Hospital, Plymouth, United Kingdom  
Jackie Elliott, Queens Hospital Burton, Burton-on-Trent, United Kingdom  
Gareth Evans, Regional Genetic Service, St Mary's Hospital, Manchester Prev, United Kingdom  
Abigail Evans, Poole, United Kingdom  
Kay Facey, Clinical Trials Unit, Plymouth Oncology Centre, Plymouth, United Kingdom  
Douglas Ferguson, Room H266, Royal Devon and Exeter Hospital, Exeter, United Kingdom  
Mary Fitzpatrick-Greening, Oncology & Haematology Clinical Trials (OHCT), Guys London, United Kingdom  
Jo Fletcher, Lincolnshire Clinical Research Facility, Lincoln Pilgrim, United Kingdom  
Olesya Francis, Lincolnshire Clinical Research Facility, Research & Innovation, Lincoln, United Kingdom  
Sarah Funnell, Cancer Trials Office, Worthing, United Kingdom  
Fiona Geddes, Breast Unit - Western General Hospital, Crewe South Road, Edinburgh, United Kingdom  
Sian Gibson, Oncology Research Department, Chelmsford, United Kingdom  
Kayleigh Gilbert, Whittington, United Kingdom  
Jeanette Gilbert, Worthing, United Kingdom  
Jemma Gilmore, Oncology Research Team, Welwyn Garden, United Kingdom  
Lynn Glass, Cancer Clinical Trials, Wishaw, United Kingdom  
Sarah Goodwin, Sussex Cancer Research Team, East Sussex, United Kingdom  
Anne Griffiths, Truro, United Kingdom  
Lwazi Grinly, Clinical Trials Unit, Plymouth Oncology Centre, Plymouth, United Kingdom  
Nabina Gurung, Oncology Research, Office Research & Innovation Department, Poole, United Kingdom  
Eleanor Gutteridge, NCCTT Group 1, Nottingham, United Kingdom  
Hisham Hamed, Academic Oncology Unit, Bermondsey Block, Guys London, United Kingdom  
Claudia Harding-Mckean, Ursula Keyes Breast Unit, Countess of Chester Hospital, Chester, United Kingdom  
Annamaria Harmathova, Clinical Research Coordinator I Research & Development, Northwick Park, United Kingdom  
Susan Hartup, Breast Care Research Nurses, St James's University Hospital, Leeds, United Kingdom  
Sarah Hathaway-Lees, Queens Hospital Burton, Burton-on-Trent, United Kingdom  
Amy Henson, Breast Care Research Nurses, St James's University Hospital, Leeds, United Kingdom  
Verity Henson, Clinical Trials Unit, Bristol RI, United Kingdom  
Naomi Hill, Belfast, United Kingdom  
Annette Hilldrith, United Lincolnshire Hospitals NHS Trust - Greetwell Road, Lincoln, United Kingdom  
Zoe Hilton, Breast services, Cardiff, United Kingdom  
Katy Hoare, Lincolnshire Clinical Research Facility Research and Innovation, Lincoln, United Kingdom  
Karen Hogben, Dorchester, United Kingdom  
Chris Holcombe, Breast Unit, Linda McCartney Centre, Royal Liverpool University Hospital, Liverpool, United Kingdom  
Kieran Horgan, St James's University Hospital, Leeds, United Kingdom  
Helen Hothersall, Ward 12 Research Office, Airedale NHS Foundation Trust, Keighley, United Kingdom  
Tony Howell, Manchester, United Kingdom  
Naila Ihsan, Cottingham, United Kingdom  
Hayley Inman, Bradford Institute of Health Research, Bradford, United Kingdom

Shabana Iqbal, Huddersfield, United Kingdom  
Sejal Jain, Division 1 - Cancer, London, United Kingdom  
Karen Janes, Linda McCartney Centre, Royal Liverpool University Hospital, Liverpool, United Kingdom  
Jibril A Jibril, Lincoln County Hospital -Greetwell Road, Lincoln, United Kingdom  
Amy Kirkby, Lincolnshire Clinical Research Facility, Lincoln Pilgrim, United Kingdom  
Peter Kneeshaw, Castle Hill Hospital, Cottingham, United Kingdom  
Jalal Kokan, Macclesfield, United Kingdom  
Justyna Kukielska, Gloucestershire Research Team, Cheltenham, United Kingdom  
Alison Lannigan, Wishaw General Hospital, Wishaw, United Kingdom  
Mark Lansdown, St James's University Hospital, Leeds St.James, United Kingdom  
Tara Lawrence, Lincoln Pilgrim, United Kingdom  
Yvonne Lester, Chelmsford, United Kingdom  
Carla Lewis, Worthing, United Kingdom  
Rick Linforth, Breast Unit, Bradford, United Kingdom  
Nicola Lunt, Macclesfield District General Hospital, Macclesfield, United Kingdom  
Simon Marsh, Breast Unit, Colchester, United Kingdom  
Donna Mcevoy, Newcastle-Upon-Tyne, United Kingdom  
Stuart Mcintosh, Belfast, United Kingdom  
Deborah Melia, Oncology Research Department, Huddersfield Royal Infirmary, Huddersfield, United Kingdom  
Clare Mewies, Burton Hospitals NHS Foundation Trust, Burton-on-Trent, United Kingdom  
Zosia Miedzybrodzka, Clinical Genetics Centre, Aberdeen, United Kingdom  
Sara Millen, Dundee, United Kingdom  
Adrian Moss, Breast Clinic, Worthing, United Kingdom  
Helen Munday, Southwick Hill Rd, Cosham, Portsmouth, United Kingdom  
Claire Murphy, Airedale General Hospital, Keighley, United Kingdom  
Eisa Nael, Stafford, United Kingdom  
Shirin Namini, Clinical Research Team, Wakefield, United Kingdom  
Vitalis Nwokorie, CRN: South London (Oncology), London, United Kingdom  
Lynn Osborne, United Lincolnshire Hospitals NHS Trust, Grantham, United Kingdom  
Julie Pascoe, Oncology Clinical Trials Unit, Plymouth, United Kingdom  
Ashraf Patel, Breast Unit, Epping, United Kingdom  
Jess Perry, Yeovil, United Kingdom  
Mojca Persic, Burton-on-Trent, United Kingdom  
Andrew Proctor, Research & Development Unit, York, United Kingdom  
Sabina Rachid, Northwick Park, United Kingdom  
Rashika Rajakumar, Whittington, United Kingdom  
Ridha Ramiz, Research Team, Huddersfield, United Kingdom  
Kerry Rennie, The Clinical Trials Unit, Yeovil District Hospital, Yeovil, United Kingdom  
Nathalie Rich, Cancer Research Delivery Group, London, United Kingdom  
Lucia Richardson, Academic Oncology Department, Cottingham, United Kingdom  
Helen Robertshaw, Bradford Institute for Health Research, Bradford, United Kingdom  
Nicola Roche, Royal Marsden Hospital, London, United Kingdom  
Michelle Saull, Whittington, United Kingdom  
Sarah Scourfield, Cardiff, United Kingdom  
Elizabeth Shah, East Sussex Hospitals NHS Trust, The Ridge, East Sussex, United Kingdom  
Mike Shere, Breast Care Centre, Southmead Hospital, Bristol, United Kingdom  
Mark Sibbering, Department of General Surgery, Royal Derby Hospital, Derby, United Kingdom  
Anthony Skene, Royal Bournemouth Hospital, Bournemouth, United Kingdom  
Simon Smith, Breast Unit, Chelmsford, United Kingdom  
Jill Stacey, Staffordshire General Hospital, Stafford, United Kingdom  
Kim Stevens, Duthie building MP306, Southampton, United Kingdom  
Helen Sweetland, The Breast Centre, Cardiff, United Kingdom  
Glyn T Neades, Breast Unit - Western General Hospital, Crewe Road South, Edinburgh, United Kingdom  
Jo-Anne Taylor, Conquest Hospital, The Ridge, East Sussex, United Kingdom  
Issy Thomas, Lincolnshire Clinical Trials Unit, Pilgrim Hospital, Lincoln Pilgrim, United Kingdom  
Alastair Thompson, Department of Surgical Oncology, Division of Surgery, Dundee, United Kingdom  
Jonathan Thompson, NI Cancer Clinical Trials Unit East Podium, 'C' Floor, Belfast City Hospital, Belfast, United Kingdom  
Sarah Thorpe, The Oncology Research Team, The Nightingale Centre, Manchester, United Kingdom  
Jayant Vaidya, The Clinical Trials Group, Royal Free and UCL Medical School, Whittington, United Kingdom

Philip Walker, Bolton, United Kingdom  
Sarah White, SWLCRN, London, United Kingdom  
Caroline Wilson, Sheffield, United Kingdom  
Virginia Wolstenholme, Department of Clinical Oncology, London, United Kingdom  
Jeremy Wood, QE2 Breast Unit, Welwyn Garden, United Kingdom  
Charles Zammit, Nigel Porter Unit, Royal Sussex County Hospital, Brighton, United Kingdom  
Zsuzsanna Kahan, Department of Oncotherapy, University of Szeged, Szeged, Hungary  
Brigitta Éberling, University of Szeged, Department of Oncotherapy, Szeged, Hungary  
Ashley Bazin, Dept. Of Medical Oncology, Tallaght, Ireland  
Margaret Burke, Oncology/Haematology Clinical Trials, Sligo, Ireland  
Tara Byrne, Cancer Trials Ireland, Dublin, Ireland  
Mary Doyle, UC Dublin, Ireland  
Denis Evoy, ICORG, the Irish Clinical Oncology Research Group, UC Dublin, Ireland  
Sharon Gardiner, Limerick, Ireland  
Rajnish Gupta, ICORG, the Irish Clinical Oncology Research Group, Limerick, Ireland  
Aisling Hegarty, Department of Surgery, Beaumont Hospital Beaumont, Beaumont Dublin, Ireland  
Arnold Hill, ICORG, the Irish Clinical Oncology Research Group, Dublin, Ireland  
Marian Jennings, Oncology Clinical Trials Office, University Hospital Galway, Galway, Ireland  
John Kennedy, ICORG, the Irish Clinical Oncology Research Group, Dublin, Ireland  
Michael Kerin, ICORG, the Irish Clinical Oncology Research Group, Galway, Ireland  
Ingrid Kiernan, Oncology Department, Dublin, Ireland  
Michael J. Martin, ICORG, the Irish Clinical Oncology Research Group, Sligo, Ireland  
Elaine Mccarthy, Limerick, Ireland  
Deirdre O'Hanlon, ICORG, the Irish Clinical Oncology Research Group, Cork, Ireland  
Debra O'Hare, Cork, Ireland  
Kathleen Scott, Dublin, Ireland  
Janice Walshe, ICORG, the Irish Clinical Oncology Research Group, Tallaght, Ireland  
Gian Antonio Da Prada, Medical Oncology Division, Italy  
Fabrizio Artioli, Ospedale B. Ramazzini, V. Guido Molinari, Italy  
Antonio Bernardo, Istituti clinici scientifici Maugeri, Italy  
Andrea Bianchetti, Italy  
Bernardo Bonanni, Division of Chemoprevention, Italy  
Fulvio Borella, Italy  
Elisabetta Cretella, Italy  
Giuseppe De Nittis, Italy  
Massimo Federico, Azienda Ospedaliera Universitaria die Modena, Modena, Italy  
Nicola Flego, Florence DCIS, Italy  
Daniele Generali, Cremona ITALY, Italy  
Lorenzo Gianni, Divisione Oncologia Ed Onco-Ematologa, Italy  
Claudio Graiff, Azienda Sanitaria di Bolzano, Italy  
Aliana Guerrieri Gonzaga, Division of Chemoprevention, Italy National Coordinating Centre, Italy  
Annalisa Lanza, Italy  
Maria Michiara, Azienda Ospedaliero-Universitaria di Parma, Italy  
Mara Negri, Servizio Data Management, Italy National Coordinating Centre, Italy  
Lorenzo Orzalesi, University of Florence, Florence, Italy  
Elisa Picardo, Italy  
Graziella Pinotti, Italy  
Riccardo Ponzzone, Italy  
Mauro Porpiglia, Aso O.I.R.M. Sant'anna, Italy  
Elena Rapacchi, Italy  
Giorgia Razzini, Italy  
Jenny Roselli, Florence, Italy  
Britt Rudnas, Italy  
Claudia Sangalli, Servizio Data Management, Italy National Coordinating Centre, Italy  
Edda Simoncini, Italy  
Carlo Tondini, Ospedali Riuniti Di Bergamo, Italy  
Ilaria Vallini, Italy  
Clara Varricchio, Italy National Coordinating Centre, Italy  
Barbara Venturini, Italy  
Marilena Visini, Azienda Ospedaliera Ospedale di Lecco, Italy

Stephen Brincat, Oncology Day Unit, Tal Qroqq, Malta, Malta  
Nadia Cilia, Oncology Day Unit, Tal Qroqq, Malta, Malta  
Ian Campbell, Waikato Hospital, New Zealand, Hamilton, New Zealand  
Heather Flay, Waikato Hospital, Hamilton, New Zealand  
Brendan Luey, Wellington, Wellington, New Zealand  
Michael Mccrystal, North Shore Hospital Auckland, New Zealand , Auckland, New Zealand  
Debra Morriss, Wellington, Wellington, New Zealand  
Kathryn Neilson, St George's, Christchurch, New Zealand  
Sherry Nisbet, North Shore, Auckland, New Zealand  
Gill Rolfe, Auckland, New Zealand  
Jenni Scarlet, Waikato, Hamilton, New Zealand  
Andrew Simpson, Wellington Hospital, Wellington, New Zealand  
Nic Stevens, St Georges, Christchurch, New Zealand  
Chris Wynne, Canterbury Breast Care (Christchurch), Christchurch, New Zealand  
Conceicao Costa, Gabinete de Investigação Clínica, Lisbon, Portugal  
Paula Rodrigues, Gabinete de Investigação Clínica, Lisbon, Portugal  
Gabriela Sousa, Lisbon, Portugal  
Fatima Vaz, Instituto Portugues De Oncologia, Gabinete De Estudos Clinicos, Lisbon, Portugal  
Linda Agren, Lund, Sweden  
Anna-Karin Falck, Department of Surgery, Helsingborg, Sweden  
Kristina Johansson, Swedish Monitors, Sweden  
Jenny Johansson, Stockholm, Sweden  
Jakob Kaij, Department of Surgery, Skånes Universitetssjukhus Department of Surgery, Sweden  
Sara Margolin, Department of Oncology, Stockholm, Sweden  
Kerstin Reistad, Helsingborg, Sweden  
Anita Ringberg, Malmo University Hospital, Swedish Monitors, Sweden  
Lisa Rydén, Department of Surgery, Lund, Sweden  
Lisa Rydén, Department of Surgery, Swedish Monitors, Sweden  
Gunilla Sellerstam, Stockholm, Sweden  
Jan Sundberg, Department of Oncology, Swedish Monitors, Sweden  
Jan Sundberg, Department of Oncology, Lund, Sweden  
Marie Sundqvist, Swedish Monitors, Sweden

**IBIS-II coordinating centre:**

Jessica Adams  
Jane Hickman  
Victoria Davis  
Nadia Haidar