

Figures:

Figure 1: Flow diagram

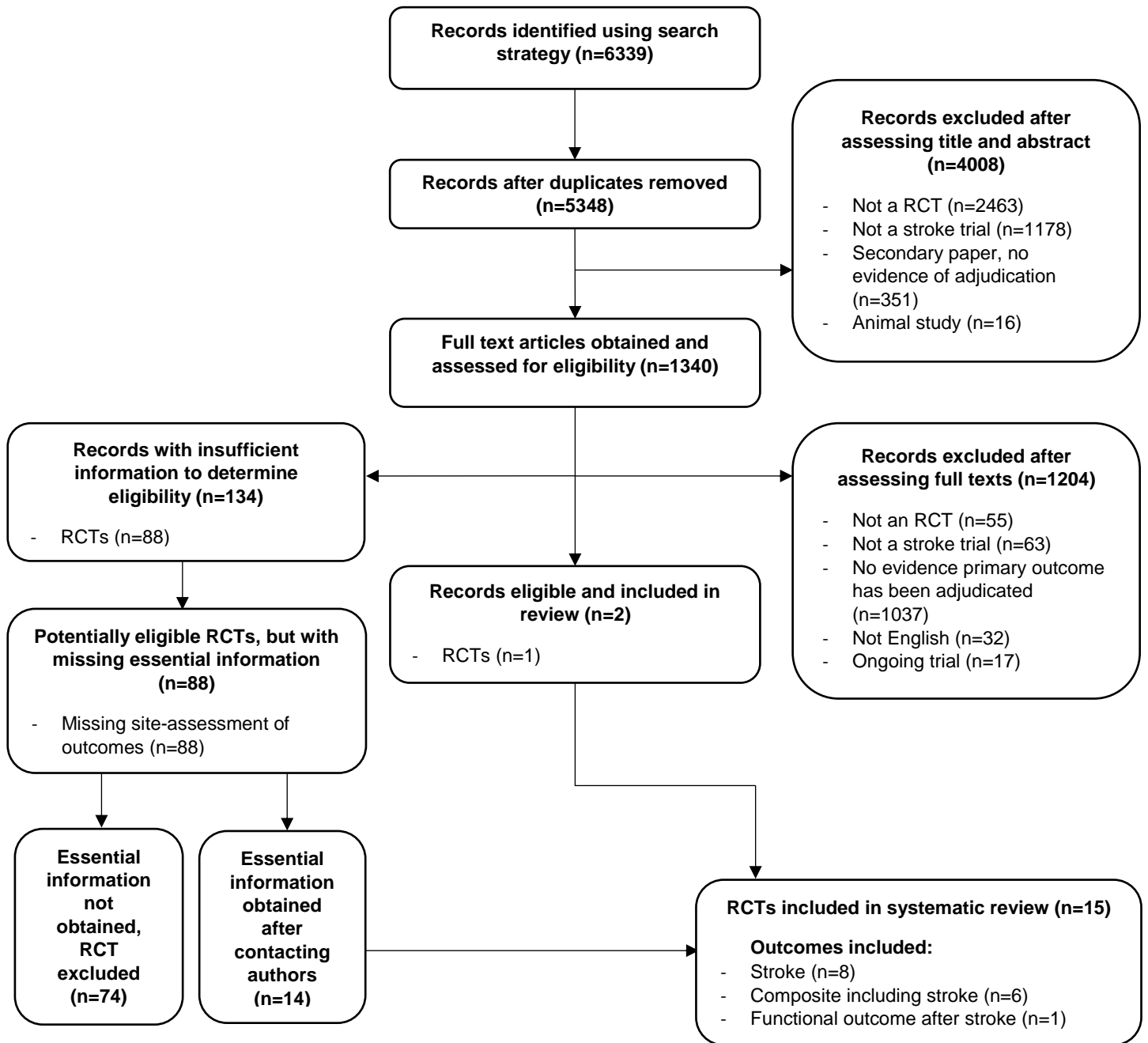


Figure 2: Analysis of 18 comparisons from 15 included trials, comparing the effect size for the primary outcome based on whether assessment was by central adjudicators or not

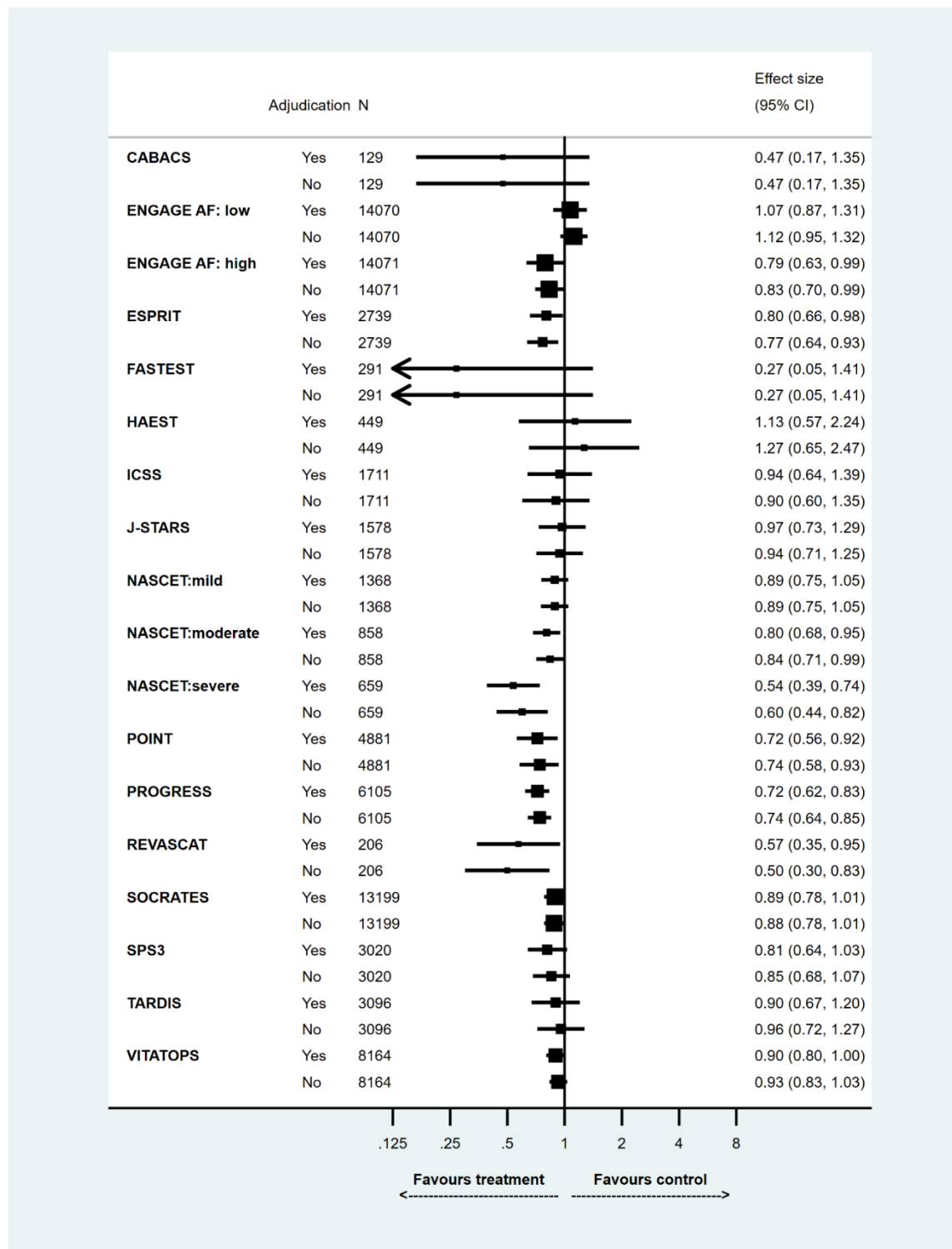
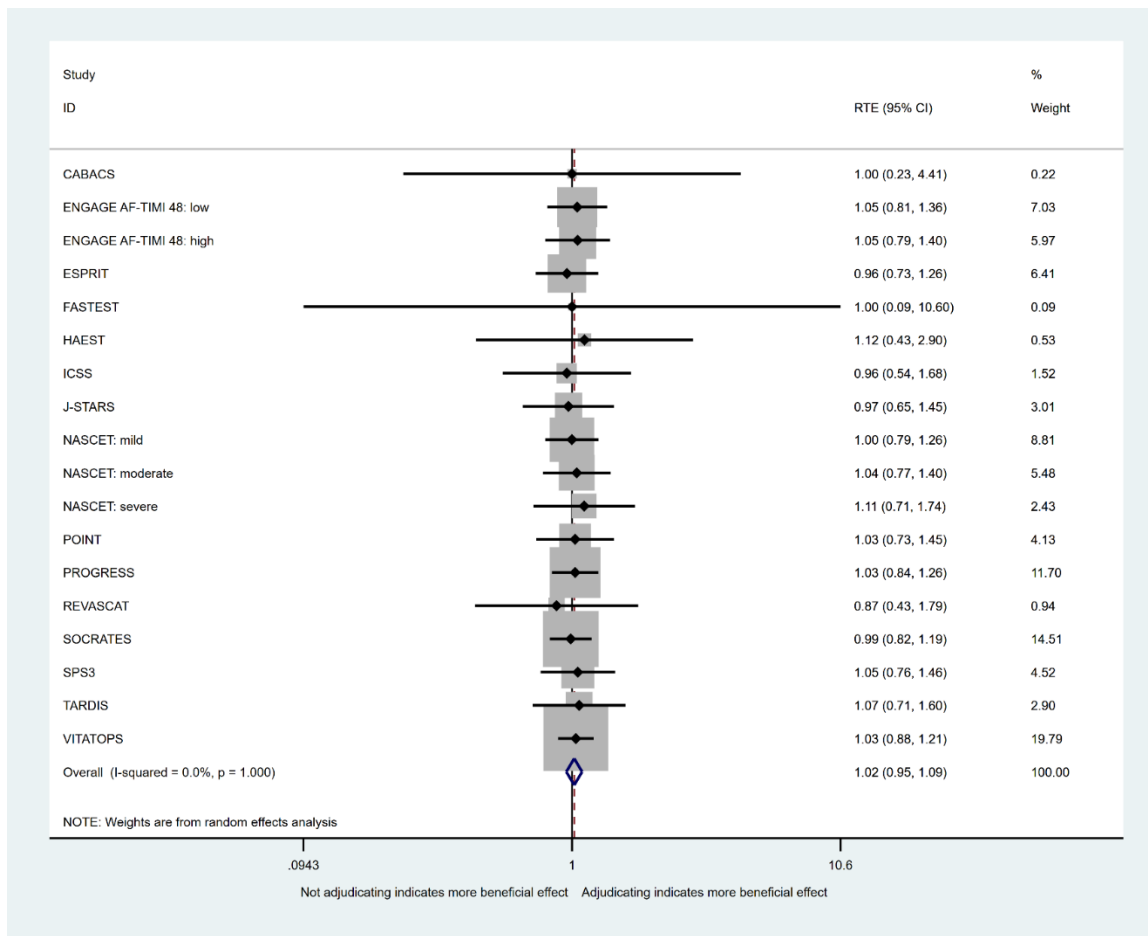
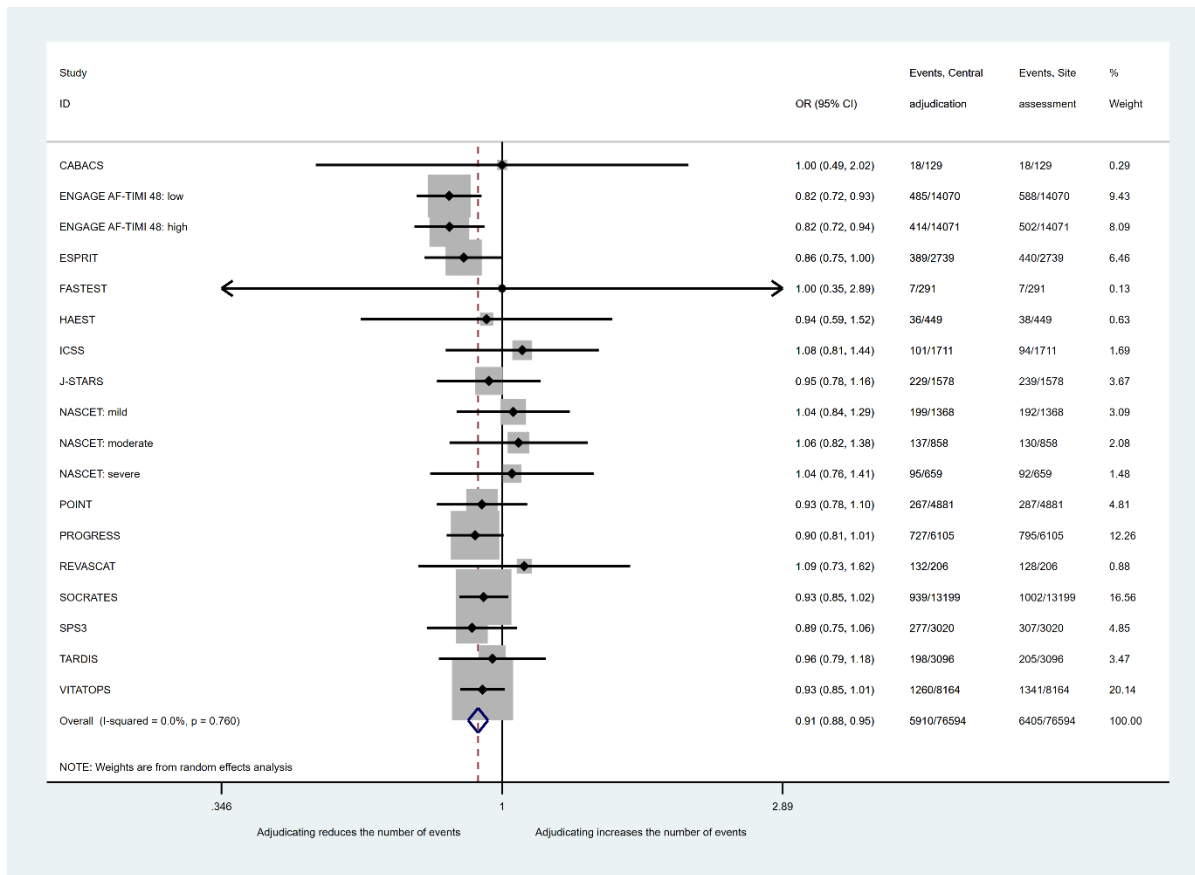


Figure 3: Meta-analysis of RTE in included studies, using a random-effects model



RTE refers to ratio of treatment effects

Figure 4: Meta-analysis of change in number of reported events in included studies, using a random-effects model



OR refers to odds ratio