

Rainbow cosmic shear: Optimization of tomographic bins

Thomas D. Kitching and Peter L. Taylor

*Mullard Space Science Laboratory, University College London,
Holmbury St. Mary, Dorking, Surrey RH5 6NT, United Kingdom*

Peter Capak

*Department of Astronomy, California Institute of Technology,
MC 249- 17, 1200 East California Boulevard, Pasadena, California 91125, USA*

Daniel Masters

*Jet Propulsion Laboratory, California Institute of Technology,
4800 Oak Grove Drive, Pasadena, California 91109, USA*

Henk Hoekstra

Leiden Observatory, Leiden University, Niels Bohrweg 2, NL-2333 CA Leiden, The Netherlands

(Received 8 January 2019; published 29 March 2019)

In this paper, we address the problem of finding optimal cosmic shear tomographic bins. We generalize the definition of a cosmic shear tomographic bin to be a set of commonly labeled voxels in photometric color space; rather than bins defined directly in redshift. We explore this approach by using a self-organizing map to define the multidimensional color space, and we define a “label space” of connected regions on the self-organizing map using overlapping elliptical disks. This allows us to then find optimal labeling schemes by searching the label space. We use a metric that is the signal-to-noise ratio of a dark energy equation of state measurement, and in this case we find that for up to five tomographic bins the optimal color-space labeling is an approximation of an equally spaced binning in redshift; that is in all cases the best configuration. We also show that such a redefinition is more robust to photometric redshift outliers than a standard tomographic bin selection.

DOI: [10.1103/PhysRevD.99.063536](https://doi.org/10.1103/PhysRevD.99.063536)**I. INTRODUCTION**

Despite the tremendous progress in the precision with which cosmological parameters have been determined, we still do not understand the physical nature of the main ingredients that make up the Universe in the currently favored Λ CDM model. To advance observational constraints a number of techniques can be employed. Of these, weak gravitational lensing by large-scale structure, or cosmic shear, is potentially the most promising. It uses the distortions in the observed images of distant galaxies to map the mass perturbations along the line-of-sight. These projected image distortions—changes in the size and third flattening (ellipticity) of the images—are correlated in the angular direction and as a function redshift and these correlations are typically summarized in terms of a power spectrum or a correlation function.

Thanks to ever larger, deep imaging surveys with good image quality, the lensing signal is now routinely measured [e.g., [1–3]], and yields constraints on certain parameter combinations that match the precision of the most recent CMB results [4]. Moreover, even larger surveys aim to

constrain the dark energy equation-of-state with per cent precision [5–7]. The projected matter power spectrum is rather featureless, and the sensitivity to dark energy, and modifications to the theory of gravity, arises from the ability to measure the growth of structure by dividing the source samples by redshift. Obtaining precise spectroscopic redshifts for such large samples of distant, faint galaxies is not possible, but the lensing kernel is broad so that photometric redshifts are adequate. However uncertainties in the photometric redshift determination of individual sources prevent a clean division of the sources, thus reducing the precision with which cosmological parameters can be determined.

In practice, the division is commonly done by determining photometric redshifts using the available multiband data and binning these estimates. The more bands, the better the mapping between the colors and the redshift. It is, however, not clear what the best labeling of sources is for the binning, because of statistically ill-defined (catastrophic) outliers and the overall statistical uncertainties in the redshift determination. Instead of this approach, we explore here the possibility to bypass the photometric

redshift determination step, and divide the sources based on their color measurements directly.

In this paper, we investigate how one should optimally choose color voxel sets for cosmic shear. We do this by using the self-organizing map derived from [8], so we can work in lower dimensions, and explore this space. The methodology is presented in Secs. II and III, results are presented in Sec. IV, and we present our conclusions in Sec. V. This is a preliminary study of this re-definition of cosmic shear tomography, that will be extended in future works to include intrinsic alignments, galaxy-clustering cross-correlations and combined with optimal scale-cutting weights [9].

II. COSMIC SHEAR TOMOGRAPHY

The most widely used cosmic shear power spectrum formulation uses the Limber [10], flat-Universe [11] and equal-time [12] approximations, and creates bins in redshift known as “tomographic” bins. This approach was generalized in [13] to a *generalized spherical-transform* that is defined as

$$\gamma_{\ell m}(\eta) = \sqrt{\frac{2}{\pi}} \sum_g \gamma_g(r_g, \theta_g) W_\ell(\eta, r_g) {}_2Y_{\ell m}(\theta_g), \quad (1)$$

where $\gamma \in \mathbb{C}$ is the shear, the sum is over all galaxies g with angular coordinate θ_g and radial coordinate r_g , $W_\ell(\eta_i, r_g)$ is a weight where η_i is a general label, and ${}_2Y_{\ell m}$ are the spin-weighted spherical harmonics with spin 2. The cosmic shear power spectrum is the covariance of this quantity that is

$$C_\ell(\eta_i, \eta_j) = \frac{9\Omega_m^2 H_0^4 (\ell+2)!}{16\pi^4 c^4 (\ell-2)!} \int \frac{dk}{k^2} G_\ell(\eta_i, k) G_\ell(\eta_j, k), \quad (2)$$

where c is the speed of light in vacuum, Ω_m is the fractional mass-energy density of matter, and H_0 is the value of the Hubble constant. The matrix G is given by

$$G_\ell(\eta_i, k) \equiv \int dz_p dz' n(z') p_i(z'|z_p) \times W_\ell(\eta_i, r[z']) U_\ell(r[z'], k) \quad (3)$$

where $r[z]$ is the co-moving distance at a redshift z . $p_i(z|z_p)$ is the probability that a galaxy has a redshift z , given a photometric redshift measurement z_p for bin i . The radial distribution of galaxies is denoted by $n(z)$. By taking the Limber and flat-Universe approximations [11,14], the matrix U can be written as

$$U_\ell(r, k) = \frac{F_K(r, \nu(k))}{ka(\nu(k))} \sqrt{\frac{\pi}{2(\ell+1/2)}} P^{1/2}(k, \nu(k)), \quad (4)$$

where $\nu(k) \equiv \frac{\ell+1/2}{k}$. These are good approximations for small-scales $\ell > 100$ [10], and for flat universes consistent with current measurements of Ω_k [11]. The power spectrum of matter overdensities is denoted $P(k; r)$ where the equal-time approximation has been used [12]. The lensing kernel for a spatially flat cosmology is

$$F_K(r, r') \equiv \frac{r-r'}{rr'}. \quad (5)$$

The shot noise power spectrum, caused by the random (unlensed) ellipticity of galaxies, is given by

$$N_\ell(\eta_1, \eta_2) = \frac{\sigma_e^2}{2\pi^2} \int dz n(z) W_\ell(\eta_1, r) W_\ell(\eta_2, r), \quad (6)$$

where $\sigma_e^2 \simeq (0.3)^2$ [15] is the variance of the unlensed ellipticities of the observed galaxies. The shot noise amplitude scales as $1/N_g$, where N_g is the number of galaxies in a given bin; see [9].

From this general definition, the question is then which weight function to choose. By taking the weight-function $W_\ell(\eta_i, r[z]) \equiv j_\ell(\eta_i r[z])$ in Eqs. (3) and (6), the equations for “three-dimensional cosmic shear” are reproduced [16–18]. In this case, the labels η correspond to inverse-distance variables in the Bessel function. The standard “tomographic” cosmic shear spectra [19] are reproduced by taking the weight function to be a top hat function in redshift only:

$$W(\eta_i, z) \equiv \begin{cases} 1 & \text{if } z \in i \\ 0 & \text{if } z \notin i, \end{cases} \quad (7)$$

defines the “tomographic” bin associated with redshift region i . Normally tomographic bin selection is done in one of two ways: equally spaced bins in redshift, or bins that have an equal-number of galaxies per bin; we refer to these as “equally spaced” and “equal number” as a shorthand throughout. Both these options are discussed in [13].

In this paper, we generalize the “tomographic” bin labels η_i to be indicators of a population of galaxies with similar colors (or SEDs), or with SEDs close in color space, rather than directly similar spectroscopic redshifts (as is the case in standard tomography). We refer to the corresponding power spectra $C_\ell'(\eta_i, \eta_j)$ as ‘rainbow tomography’. In this sense, the color combinations for a set of bin labels $\{\eta_i\}$ can generically result in complicated equivalent behavior as a function of redshift. This is similar to the proposal of [20]. More specifically the bin labels η_i correspond to a set of color voxels V that have been given a common label i ,

$$\eta_i \triangleq \bigcup V_a, \dots, V_n = \{V\}_i, \quad (8)$$

where the union of the voxels $a \dots n$ corresponds to bin i . We use the notation \triangleq to mean “corresponds to.”

For each voxel V_α , it is assumed that there is a specific unique spectroscopic probability distribution $n_\alpha(z)$ and a corresponding photometric redshift probability distribution $p_\alpha(z|z_p)$, derived from broadband information used in a specific experiment. We note that the sum over all the voxels results in the radial distribution of galaxies that enters Eq. (3), $\sum n_\alpha(z) = n(z)$. Within a voxel the mapping of spectroscopic redshift to photometric redshift probability distribution is a subject of photometric redshift estimations codes such as [21,22]. Therefore we define the weight function for a given label i to be

$$W(\eta_i, z) = \frac{1}{n(z)} \sum_{\alpha \in \{V\}_i} n_\alpha(z), \quad (9)$$

where the sum is over all voxels in the set $\{V\}_i$. We note that the standard tomographic bin definitions (equally spaced, and equal-number) are instances of this definition where, in reference to Eq. (7), the voxels in $\{V\}_i$ correspond to all galaxies with $z_\alpha \in i$. The denominator ensures that in Eq. (3) this definition reduced to the weights used in the standard tomographic case [Eqs. (7), (6)].

For reference, one can define the photometric redshift probability distribution for a given bin

$$p_i(z, z_p) = \frac{1}{N_i} \sum_{\alpha \in \{V\}_i} p_\alpha(z|z_p), \quad (10)$$

where each $0 < p_\alpha(z|z_p) < 1$ is an individual probability distribution for voxel α , and the denominator is the number of voxels N_i that contribute to bin i which ensures that $0 < p_i(z, z_p) < 1$.

In the voxel-based approach, each voxel has an associated PDF. Therefore, when one constructs a tomographic bin, the PDFs propagate as described in Eq. (10), which would then be used in a cosmological analysis to model the lensing signal [Eq. (3)]. This allows for the error propagation for general configurations of bins. In the standard approach, one subdivides the population based on redshift alone and propagates redshift error in the same way.

III. METHODOLOGY

Here, we briefly review the self-organizing map approach of [8] and then describe how this space is explored to optimally select color voxel combinations for tomographic bin labeling.

A. Self-organizing map

When observing galaxies in N_B broadband filters the color space (all possible wavelength differences in this set) is of dimension $N_B!/2$, that for cosmic shear surveys results in a high-dimensional space. In this space, color combinations that have similar spectroscopic redshifts form lines or planes (see e.g., [8]). In order to more efficiently

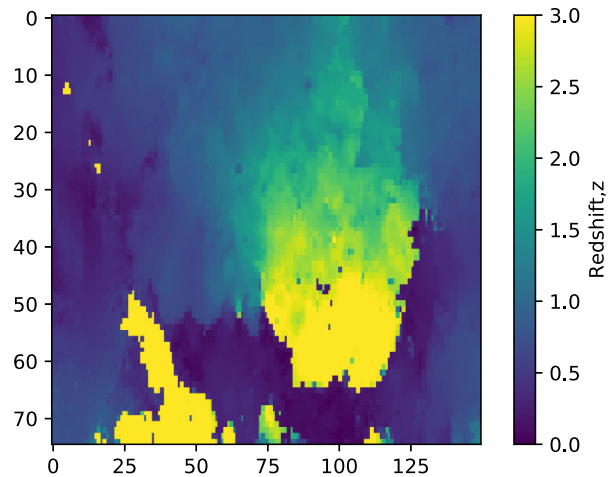


FIG. 1. The [8] self-organizing map. The color scale shows the mean photometric redshift per pixel. The axes are pixel labels that are arbitrarily defined.

represent this space, Ref. [8] applied a self-organizing map that projects this high-dimensional data onto a lower-dimensional (two-dimensional) manifold. The result is a map of two-dimensional pixels that represent voxels in the higher-dimensional space, and crucially that the topology of the higher-dimensional space is retained. In [8], this method was used to map the multicolor space and its completeness using COSMOS data, in particular to determine in which pixels additional spectroscopic information is required.

In Fig. 1, we show a two-dimensional self-organizing map, colored by the mean redshift per pixel, the axes are pixel numbers that are arbitrary labels. This map is a modified version of the one used in [8] made for C3R2 targeting, that now includes VVDS/EGS in its derivation as well as COSMOS; this will be described in the C3R2 DR2 paper, (Masters et al., in prep). This self-organizing map represents the redshift distribution for Euclid¹ [5]. For each pixel, there is in principle a full posterior redshift distribution [see Eq. (10)], but the current version has only mean redshift estimates; this is sufficient for our proof of concept study where for each bin we assign a Gaussian $p_\alpha(z|z_p)$ with mean z_p and width $\sigma(z) = 0.03(1+z)$.

We note several features of the self-organizing map that are salient to the discussion in this paper. Firstly neighboring pixels represent voxels in color space that have similar spectral energy distributions (SEDs). This means that areas of interconnected and adjacent pixels can be delineated in this space that have some physical meaning. Secondly there is some structure in this space, i.e., nonrandom and well defined in shape, suggesting that the topology of the projected two-dimensional space can be approximated using simple shapes.

¹<http://euclid-ec.org>

In principle, each pixel in the self-organizing map (or equivalently voxel in color space) could be used as a distinct tomographic bin. In this approach, as shown by [13], the total three-dimensional shear-field information would be fully captured. The utility of binning the data is therefore only one of computational nature and regularization. For the case that one uses a small number of tomographic bins $N_{\text{tom}} \ll N_{\text{pixel}}$, which is usually the case, there will be a dramatic reduction in the time required to compute the cosmic shear power spectra, where the computational time scales as $\mathcal{O}(N_{\text{tom}}^2)$, relative to the nontomographically binned case. One may also expect that the behavior of the statistics may be more Gaussian (due to the central limit theorem), and the use of lower dimensional binned data may improve the properties of correspondingly lower dimensional matrices in an analysis. Furthermore, covariance matrices computed from simulated data will require fewer simulations [23] (the number of simulations scales as N_{tom}^2). None of these has been shown to cause intractable problems in the regime that $N_{\text{tom}} \simeq N_{\text{pixel}}$, but for the purposes of this paper we will assume that tomographic bin labeling is a desired approximation of the data.

B. Treatment of outliers and unreliable redshifts

Compared to traditional approaches based on splitting the galaxy sample by photometric redshift, we can distinguish problematic voxels and exclude these from the analysis. These can take a variety of forms: first, where the corresponding $n_\alpha(z)$ is multimodal; second, voxels for which there is insufficient or missing spectroscopic information to calibrate the color-redshift relation; and, third, where $n_\alpha(z)$ differs significantly from that of neighboring voxels.

The first category, with multimodal $n_\alpha(z)$, known as “outliers,” results in redshift overlap between tomographic bins, thus reducing the efficacy. The second, with insufficient data, corresponds to “unreliable” voxels. The third corresponds to the sharp transitions in Fig. 1, where even

though the voxels may have unimodal redshift distributions, uncertainties in the photometry may lead to multimodal distributions

None of these are ideal, but voxels for which the redshift calibration is uncertain are especially important to exclude. This is difficult to achieve when dividing the sample based on simple color selections that may have a nontrivial distribution in the $N_B!$ -two-dimensional color space. Individual color voxels, however, could in principle be identified and simply excluded. The reason to use the self-organizing map space is the same reason why this method was proposed in [8], namely that the dimensionality of the problem is reduced from $N_B!/2$ to 2, thereby making calculations and selections in this space tractable.

To demonstrate the usefulness of rainbow tomography, we consider the identification of unreliable voxels, but we note that in general all three complications should be characterized for each voxel. To do so, we identify all self-organizing map pixels with less than or equal to one galaxy and label these as unreliable as an example; this is a plausible selection to make for this simple demonstration. In Fig. 2, we show the unreliable pixels in the self-organizing map plane, where each pixel can be identified and excluded, and in an example color space projection using the same data ($r-i$ vs $i-z$), where the distribution is much more complex and overlaps in projection with the sample of pixels for which adequate redshift information is available. We also show the tomographic bin PDFs for an equal-spacing configuration for three bins, with and without the unreliable pixels excluded. Even in this simple case the difference caused by the exclusion of these pixels causes a shift in the mean redshift of the bins of $\Delta z = 0.004, 0.001, 0.003$ for the three bins, respectively, from lowest to highest redshift, which would be outside the requirement of $\Delta z \leq 0.002$ for a stage-IV cosmic shear experiment [24].

This provides an example of the type of error that could occur in a standard treatment of outliers, where such an

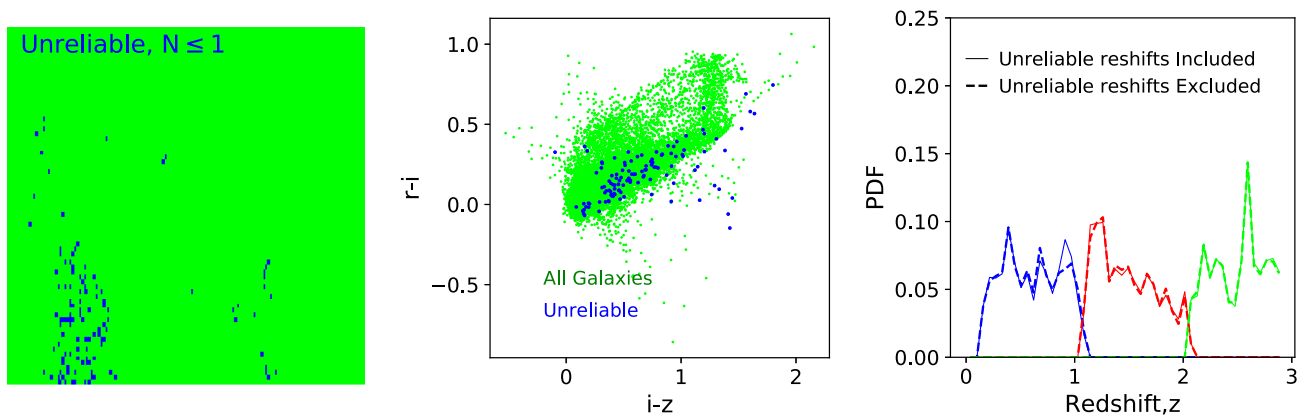


FIG. 2. Left: The self-organizing map with pixels highlighted in blue that contain less than or equal to one galaxy. Middle: The distribution of the galaxies with unreliable redshift distributions (blue) in color space, compared to all galaxies (green). Right: The equal-spaced tomographic bin PDFs when the unreliable pixels are either included (thin solid lines) or excluded (thick dashed lines).

exclusion would be difficult (involving high-dimensional exclusion boundaries in color space), compared to the self-organizing map case in which the exclusion of outliers would be straightforward.

C. Optimization approach

In Fig. 3, we show the same self-organizing map as in Fig. 1 with tomographic areas defined for the two cases of equally spaced and equal-number bins. We show an illustrative case of three tomographic bins. It can be seen that the areas associated with each bin combination are very different, but they have a similar geometry. We show the spectroscopic and photometric distributions for each bin choice, where it can be seen that the former is approximately a convolution of the latter; see Eqs. (9) and (10).

A full optimization of the self-organizing map for tomographic bin labeling would involve assigning a label between $[0, N_{\text{tomographic}} - 1]$ for each self-organizing map pixel and sampling all possible combinations of this labeling over all pixels. For $n \times m$ pixels this represents $(nm)^{N_{\text{tomographic}} - 1}$ combinations. For the self-organizing map we are using (dimension (75,150)) for $N_{\text{tomographic}} > 3$ tomographic labels the

full brute-force searching of this space would have dimension $> 1.4 \times 10^{12}$. Even if one down-sampled this space by a factor 10 in each dimension, thereby losing sensitivity, this would still result in a space with $> 1.4 \times 10^6$ dimensions. Therefore, this brute-force optimization is not possible.

To make the bin labeling problem tractable, and to optimize over this space for $N_{\text{tomographic}}$ tomographic labels, we define $N_{\text{tomographic}} - 1$ overlapping areas represented by elliptical disks. For each disk, there are four free hyper-parameters (x, y, a, b) where (x, y) are the center of the disk in the self-organizing map pixels, and (a, b) are the semimajor and semiminor axes of the disks (in principle this could be extended to include inclined ellipses with an orientation angle, but we found that this additional freedom was not required). For $N_{\text{tomographic}}$ tomographic labels this gives a label-space with dimension $4(N_{\text{tomographic}} - 1)$ (two labeled areas, and the unlabeled area, that defines the $N_{\text{tomographic}}^{\text{th}}$ bin). Different combinations of the hyper-parameters describe different divisions of the self-organizing map into tomographically binned labels. This is an extremely flexible space over which to optimize and allows one to optimize tomographic bin labeling in a way that is consistent with the underlying topography of the color space (recall that neighboring pixels have similar SEDs). In Fig. 3, we show an example of a random realization of the hyper-parameter label space for three tomographic bin labels.

Given a particular labeling one needs to define a metric, or figure of merit, that quantifies how optimal this labeling is. To do this we use the cosmic shear signal-to-noise ratio for the dark energy parameter w_0 defined as

$$F = - \sum_{\ell, i, j} \left[\frac{\partial C_{\ell}(\eta_i, \eta_j)}{\partial w_0} \right]^2 \frac{1}{[C_{\ell}(\eta_i, \eta_j) + N_{\ell}(\eta_i, \eta_j)]^2}, \quad (11)$$

where C_{ℓ} and N_{ℓ} are defined in Eqs. (2) and (6), respectively. Throughout we present a normalized value of this quantity F/F_{eqz} , where the denominator F_{eqz} is equal to $-F$ (note the minus sign to maintain the negativity of the optimization metric, that is required for the optimization algorithms we use) except using the equally spaced bins (see e.g., Fig. 3). F is effectively (minus) the square root of the normalized w_0 component of the cosmic shear Fisher matrix. To compute the power spectra we use a Planck [4] maximum likelihood cosmology. We note that many metrics could be used in this optimization, and we leave an exploration of possible metric choices to future work.

The label space defined above is still relatively large, for (3,4,5) tomographic labels the space has dimensions (8,12,16), and due to the overlapping nature of the elliptical regions and sharp boundaries the space is also highly structured with many local extrema. Therefore an optimization algorithm needs to be chosen that can cope with these conditions. To do this we chose the SciPy

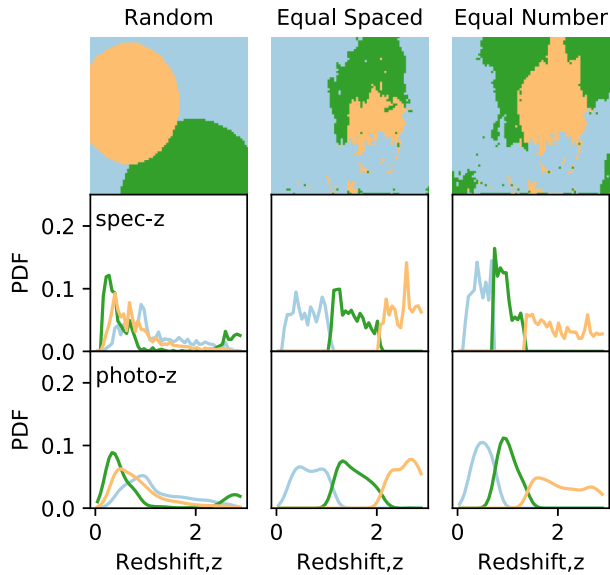


FIG. 3. The self-organizing map with areas labeled by tomographic bin number for a 3-bin case where the examples of equally spaced bins (middle column), and equal-number bins (right column) are shown. The left column is a random realization of the label-space as defined in Sec. III C. The upper panels show the self-organizing maps where each color labels a tomographic bin, the middle panels show the spectroscopic redshift probability density functions (PDFs) of the associated weights $W_S(\eta_i, z)$ as a function of redshift, where each color represents a different bin. Similarly the lower panels show the photometric redshift probability density functions (PDFs) of the associated weights $W(\eta_i, z)$ as a function of redshift. The colors match between panels.

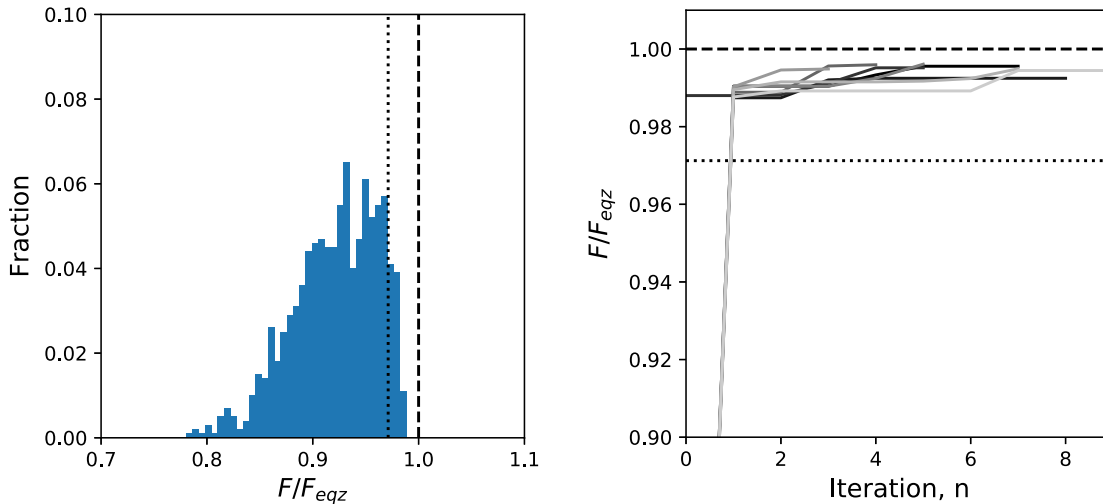


FIG. 4. The left panel shows the distribution of the optimization metric, Eq. (11), for three tomographic bin labels, when randomly sampling the label space. The dashed line is at $F/F_{\text{eqz}} = 1$, the equally spaced case, and the dotted line corresponds to the case of using equal-number binning. The right panel shows the convergence of the optimization algorithm as a function of iteration number for three tomographic bin labels, again the dashed line is at $F/F_{\text{eqz}} = 1$ and the dotted line corresponds to the case of using an equal-number binning. The grey lines show different optimization runs.

differential evolution optimization² [25], which is a genetic algorithm that supports a population of points that mutate and evolve to the best-fit solution. Genetic algorithms are particularly suitable for highly structured optimization problems with many local extrema.

We also confirmed our results by using two other algorithms: the SciKit optimization package,³ which uses either random forests, gradient descent boosting, or Gaussian mixture models to represent the optimization surface more efficiently; and PyMultiNest⁴ ([26]), which uses nested sampling to search the optimization space. We found for this particular optimization problem that these approaches were slower; this is because we are only concerned with the best-fit solution and so algorithms that compute other quantities such as Bayesian evidence explore parts of the label space that are not necessary for our purposes. The machine learning approaches in SciKit optimization in general use fewer live points (evaluations of the function) when searching a surface and instead learns the features of the surface. However we found that the rate of learning was inefficient for the highly structured surface posed by this particular problem, requiring a large number of live points. The code for this paper is available on request, where we use GLaSS [11] and

CosmoSIS [27] to compute the cosmic shear power spectra.

IV. RESULTS

In Fig. 4, we show random realizations of the label space for three tomographic bin labels if we randomly sample the (eight-dimensional in this case) space. The left panel shows the distribution of F/F_{eqz} . The conclusions from this are twofold. First, we find that there is a small spread in the distribution of the metric where the extreme values are between [0.7, 1.0]; we confirmed this is the case for all $N_{\text{tom}} \leq 5$. This demonstrates that there is, at most, 30% impact on dark energy sensitivity over a wide range of tomographic bin configurations. Secondly this shows that over a wide space of possible bin configurations equally spaced bins always perform better than an arbitrary bin configuration. We find that the performance of equal-number binning is $\approx 3\%$ lower than the equally spaced configuration. The right panel of Fig. 4 shows the convergence of the optimization algorithm as a function of iteration number when the SciPy optimization routine iterates to a global solution, over different realizations/sampling of the parameter space. We find that the algorithm always converges in fewer than ten iterations.

In Figs. 5 and 6, we show the result of the optimization for $N_{\text{tom}} = [2, 5]$; for $N_{\text{tom}} > 5$ all the optimization algorithms become inefficient as they become prohibitively slow (as the dimension of the label space becomes large), and the ellipsoidal disk approximation becomes a poorer representation of the redshift boundaries in this space (see Fig. 1). We find that in all cases the best-fit solution closely matches the equally spaced solution.

²https://docs.scipy.org/doc/scipy-0.17.0/reference/generated/scipy.optimize.differential_evolution.html

³<https://scikit-learn.org/stable/>

⁴<https://johannesbuchner.github.io/PyMultiNest/>

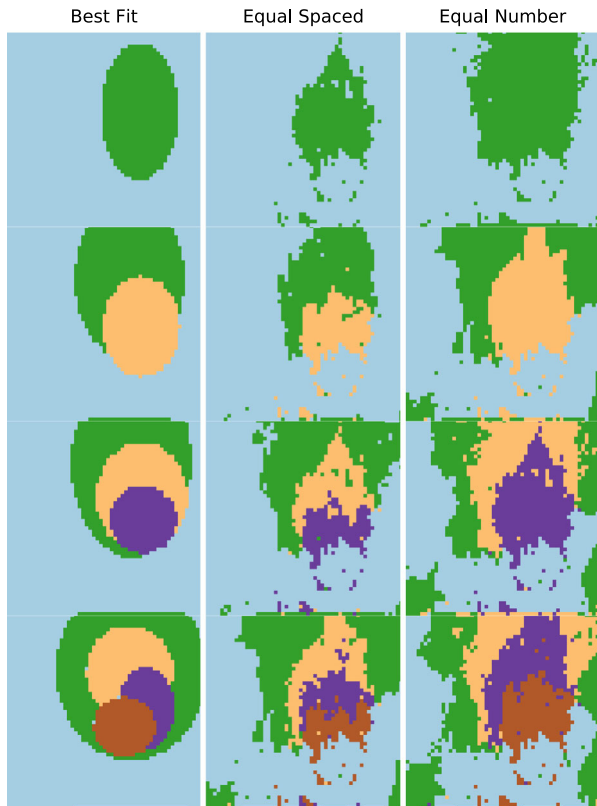


FIG. 5. The self-organizing map with areas labeled by tomographic bin for 2,3,4, and 5-bin cases (top to bottom) where the left-hand panels show the best-fit solution using the label-space and optimization routine described in Sec. III C, the middle panels for equally spaced bins, and the right-hand panels for equal-number bins. We suppress axes labels for clarity; as these are in arbitrary units. Each color labels a different bin that can be identified in Fig. 6.

In Fig. 7, we show the metric as a function of $N_{\text{tomographic}}$. We find that the best-fit solution metric is relatively constant when the number of bins is increased, and that the equal-number labeling scheme is consistently lower with a slow convergence towards the equally spaced binning. In all cases, as is also suggested by the random sampling shown in Fig. 4, the equally spaced binning has a higher metric, suggesting that this is the global optimal solution.

A. Discussion

In this paper, we investigate optimized tomographic bin labeling schemes by searching a label space that captures a wide variety of tomographic bin configurations. The optimization metric we use is the dark energy equation of state signal-to-noise ratio for the cosmic shear power spectrum. In all cases, we find a best-fit solution that is an approximation to a labeling scheme that has equally spaced bins in redshift. Moreover, we find that the equally spaced solution has a signal-to-noise ratio that is slightly higher than our best-fit solution. This is likely to be due to the approximate way in which we define areas in the

self-organizing map (using ellipsoidal disk features), which cannot accurately capture small disconnected regions with the same redshift.

All of these conclusions suggest that defining equally spaced bins in redshift is the optimal configuration for a cosmic shear power spectrum analysis to maximize the dark energy equation of state signal-to-noise ratio. This is complementary to the conclusions of [13] who find that for a sufficiently large number of bins both an equal-number and equal-spaced configuration captures all the three-dimensional information from the shear field, but that as the number of bins increased the equal-number case converges more slowly than the equal-spaced case.

The reason why equally spaced bins are optimal is twofold: the bins are orthogonal, and the equal-spacing provides better redshift coverage for dark energy measurements. Orthogonal bins should have a higher overall signal-to-noise ratio than nonorthogonal bins. If bins are nonorthogonal the overlap causes the cross-correlations between bins to have a nonzero noise component that is not present in the orthogonal case. Furthermore the signal is diluted in the redshift direction. For example, two completely overlapping bins would be probing exactly the same large-scale structure. The optimality of orthogonal bins is a result of the positivity of the weight functions we define in Eq. (9).

To test the relationship between the orthogonality of the tomographic bins and the signal-to-noise ratio we define a measure of orthogonality as

$$\Omega = 1 - \frac{2}{N_{\text{tomographic}}(N_{\text{tomographic}} - 1)} \sum_{\forall i \neq j} \frac{2W(\eta_i, z)W(\eta_j, z)}{W^2(\eta_i, z) + W^2(\eta_j, z)} \quad (12)$$

where the sum is over all tomographic bin configurations. In this case, $\Omega = 1$ if all bins are orthogonal and $\Omega = 0$ if they are completely overlapping. In Fig. 8, we show Ω as a function of the optimization metric F/F_{eqz} for 10,000 realizations of the tomographic bins configurations for $N_{\text{tomographic}} = 3$. We find that indeed there is a strong relation between the orthogonality of the bins and the metric. For a given orthogonality, there is a maximum metric that can be achieved, but also a distribution of configurations that are less optimal (consider the case of equally spaced and equal number, both are orthogonal but one is less optimal).

We make a number of approximations in this study that can be relaxed in future work. We focus here on optimization of cosmic shear power spectra as a proof of concept, but this should be extended to include a larger number of tomographic bins, intrinsic alignment power spectra and a joint optimization with galaxy-clustering methods. Furthermore the metric could be extended to include a full Fisher matrix for a cosmological parameter set rather than a single cosmological parameter.

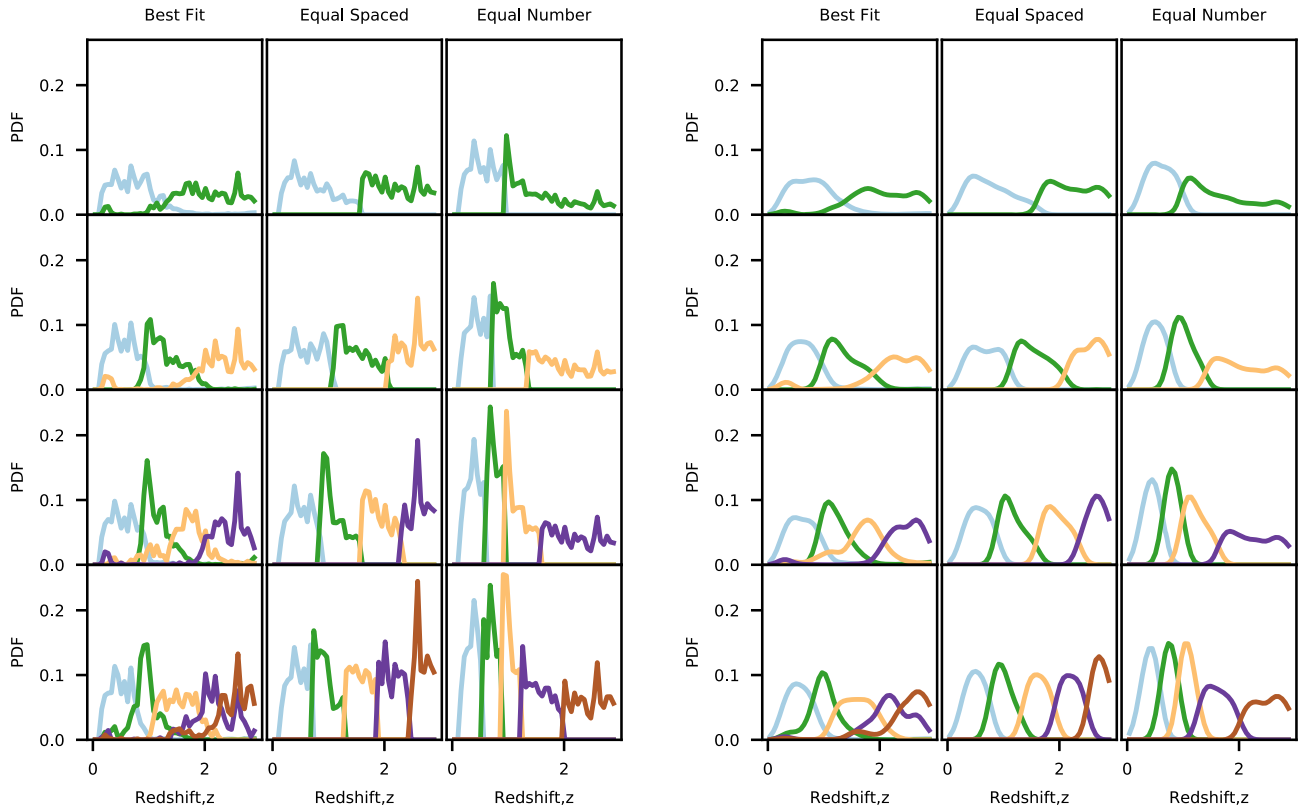


FIG. 6. The probability density functions (PDFs) of the associated weights $W(\eta_i, z)$ as a function of redshift corresponding to the labeling schemes in Fig. 5, where each color represents a different bin. The left hand panels show the spectroscopic redshift distributions and the right hand panels the associated photometric redshift distributions. In each plot, the left-hand panels show the best-fit solution using the label-space and optimization routine described in Sec. III C, the middle panels for equally spaced bins, and the right-hand panels for equal-number bins. We suppress axes labels to allow more space; the y axes are PDFs and the x axes are redshift.

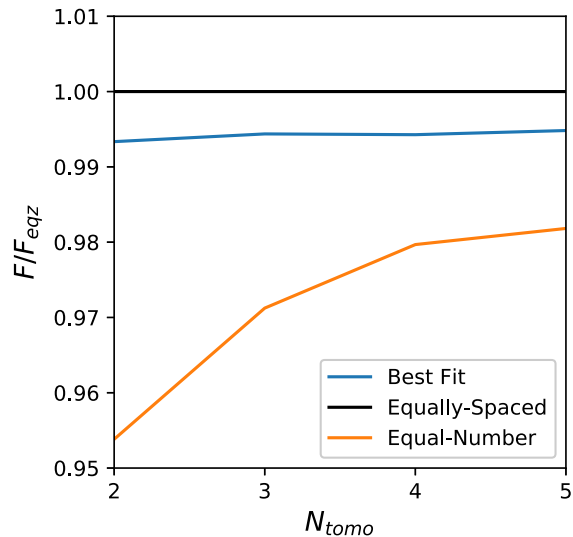


FIG. 7. The optimization metric given in Eq. (11) as a function of tomographic bin number. The lines show the equally spaced in redshift case (black line) that is constant and equal to unity by definition; the best-fit solutions shown in Figs. 5 and 6 (blue line); and the equal-number density labeling scheme (orange line).

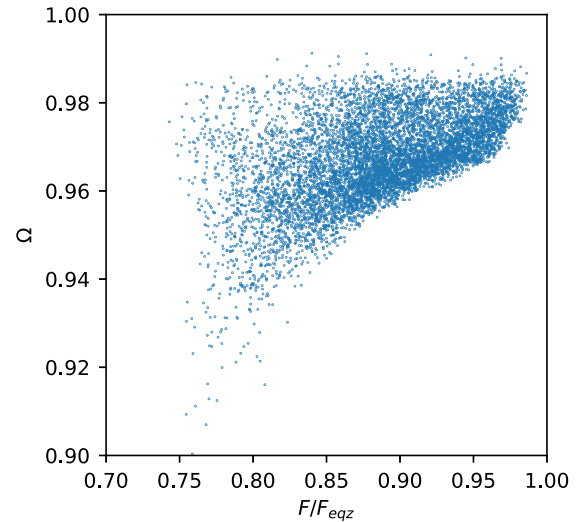


FIG. 8. The optimization metric given in Eq. (11) as a function of the orthogonality between the bins, defined in Eq. (12) for 10,000 realizations of the tomographic bin configurations for $N_{\text{tomo}} = 3$.

V. CONCLUSION

In this paper, we generalize cosmic shear tomography, in which tomographic bins are traditionally defined directly in redshift space, to the case where tomographic bins are defined in photometric color space where each color space voxel is labeled by a bin number; this is similar to that proposed in [20]. In this case, the redshift distribution of the bins is the sum of the redshift probability distributions of the galaxy populations given the same tomographic bin label. This results in weight functions that can overlap in redshift in complex ways. We demonstrate that in this redefinition it is more straightforward to exclude galaxies with undesirable redshift distributions from a photometric redshift sample.

We then define an approach to find optimal tomographic bin labeling. To do this we use the self-organizing map of [8] that already compresses the $N_B!$ /two-dimensional color space for N_B broad photometric bands down into a two-dimensional space. We then define regions in this space represented by ellipsoidal areas that for $N_{\text{tomographic}}$ tomographic bins creates a “label space” of dimension $4(N_{\text{tomographic}} - 1)$. By searching over this label space we can optimize tomographic bin labeling for any metric that depends on the tomographic weight functions.

We define the dark energy equation of state signal-to-noise ratio for the cosmic shear power spectrum as our metric. To perform the optimization, we use the SciPy differential evolution algorithm [25]. We find that there is, at most, a 30% sensitivity in the dark energy equation of state signal-to-noise ratio to the tomographic bin

configuration; this is in agreement with [28] who find cosmological results to be largely insensitive to tomographic bin configuration. We find that for $N_{\text{tomographic}} \leq 5$ in all cases the best-fit solution is a close approximation to the case where equally spaced bins in redshift are defined. Moreover, the equally spaced bin configuration outperforms the best-fit solution given the label space we use. This suggests that defining equally spaced bins in redshift is the optimal binning strategy for the metric we use.

This study can be extended to include further statistics such as photometric galaxy clustering measurements, as well as systematic effects such as intrinsic alignments. By generalizing the definition of cosmic shear tomography to be labels in color space, rather than bins in redshift, this opens up the possibility of optimizing tomographic bin configurations to maximize the science return from future experiments.

ACKNOWLEDGMENTS

We thank the `Cosmosis` team for making their code publicly available. P.T. is supported by STFC. T.K. is supported by a Royal Society University Research Fellowship. We thank J. Zuntz for providing a development branch of `Cosmosis` that was used in this analysis. D.M. and P.C. acknowledge support by NASA ROSES Grant No. 12-EUCLID12-0004. D.M. acknowledges support for this work from a NASA Postdoctoral Program Fellowship. H.H. acknowledges support from Vici Grant No. 639.043.512, financed by the Netherlands Organisation for Scientific Research (NWO).

-
- [1] H. Hildebrandt *et al.*, [arXiv:1812.06076](#).
 - [2] M. A. Troxel *et al.* (DES Collaboration), *Phys. Rev. D* **98**, 043528 (2018).
 - [3] C. Hikage *et al.*, [arXiv:1809.09148](#).
 - [4] N. Aghanim *et al.* (Planck Collaboration), [arXiv:1807.06209](#).
 - [5] R. Laureijs, J. Amiaux, S. Arduini, J. Auguères, J. Brinchmann, R. Cole, M. Cropper, C. Dabin, L. Duvet, A. Ealet *et al.*, [arXiv:1110.3193](#).
 - [6] P. A. Abell, J. Allison, S. F. Anderson, J. R. Andrew, J. R. P. Angel, L. Armus, D. Arnett, S. J. Asztalos, T. S. Axelrod *et al.* (LSST Science Collaboration), [arXiv:0912.0201](#).
 - [7] D. Spergel *et al.*, [arXiv:1503.03757](#).
 - [8] D. Masters, P. Capak, D. Stern, O. Ilbert, M. Salvato, S. Schmidt, G. Longo, J. Rhodes, S. Paltani, B. Mobasher, H. Hoekstra, H. Hildebrandt, J. Coupon, C. Steinhardt, J. Speagle, A. Faisst, A. Kalinich, M. Brodwin, M. Brescia, and S. Cavuoti, *Astrophys. J.* **813**, 53 (2015).
 - [9] P. L. Taylor, F. Bernardeau, and T. D. Kitching, *Phys. Rev. D* **98**, 083514 (2018).
 - [10] T. D. Kitching, J. Alsing, A. F. Heavens, R. Jimenez, J. D. McEwen, and L. Verde, *Mon. Not. R. Astron. Soc.* **469**, 2737 (2017).
 - [11] P. L. Taylor, T. D. Kitching, J. D. McEwen, and T. Tram, *Phys. Rev. D* **98**, 023522 (2018).
 - [12] T. D. Kitching and A. Heavens, *Phys. Rev. D* **95**, 063522 (2017).
 - [13] P. L. Taylor, T. D. Kitching, and J. D. McEwen, *Phys. Rev. D* **98**, 043532 (2018).
 - [14] M. LoVerde and N. Afshordi, *Phys. Rev. D* **78**, 123506 (2008).
 - [15] M. L. Brown, A. N. Taylor, D. J. Bacon, M. E. Gray, S. Dye, K. Meisenheimer, and C. Wolf, *Mon. Not. R. Astron. Soc.* **341**, 100 (2003).
 - [16] A. Heavens, *Mon. Not. R. Astron. Soc.* **343**, 1327 (2003).
 - [17] A. Heavens, T. D. Kitching, and A. Taylor, *Mon. Not. R. Astron. Soc.* **373**, 105 (2006).
 - [18] P. Castro, A. Heavens, and T. Kitching, *Phys. Rev. D* **72**, 023516 (2005).

- [19] W. Hu, *Astrophys. J. Lett.* **522**, L21 (1999).
- [20] B. Jain, A. Connolly, and M. Takada, *J. Cosmol. Astropart. Phys.* **3** (2007) 013.
- [21] N. Benítez, *Astrophys. J.* **536**, 571 (2000).
- [22] B. Leistedt, D. W. Hogg, R. H. Wechsler, and J. DeRose, [arXiv:1807.01391](https://arxiv.org/abs/1807.01391).
- [23] A. Taylor, B. Joachimi, and T. Kitching, *Mon. Not. R. Astron. Soc.* **432**, 1928 (2013).
- [24] T. D. Kitching, A. N. Taylor, and A. F. Heavens, *Mon. Not. R. Astron. Soc.* **389**, 173 (2008).
- [25] R. Storn and K. Price, *J. Global Optim.* **11**, 341 (1997).
- [26] J. Buchner, A. Georgakakis, K. Nandra, L. Hsu, C. Rangel, M. Brightman, A. Merloni, M. Salvato, J. Donley, and D. Kocevski, *Astron. Astrophys.* **564**, A125 (2014).
- [27] J. Zuntz, M. Paterno, E. Jennings, D. Rudd, A. Manzotti, S. Dodelson, S. Bridle, S. Sehrish, and J. Kowalkowski, *Astron. Comput.* **12**, 45 (2015).
- [28] B. Hoyle *et al.*, *Mon. Not. R. Astron. Soc.* **478**, 592 (2018).