

## **Characteristics and outcomes of patients with systemic sclerosis (scleroderma) requiring renal replacement therapy in Europe: results from the ERA-EDTA**

### **Registry**

**Hruskova Zdenka, Pippias Maria, Stel Vianda S., Abad-Díez Jose M., Benítez Sánchez Manuel, Caskey Fergus J., Collart Frederic, De Meester Johan, Finne Patrik, Heaf James G., Magaz Angela, Palsson Runolfur, Reisæter Anna Varberg, Salama Alan D., Segelmark Mårten, Traynor Jamie P., Massy Ziad A., Jager Kitty J., Tesar Vladimir.**

**Hruskova Zdenka MD PhD**, Department of Nephrology, 1st Faculty of Medicine, Charles University and General University Hospital, Prague, Czech Republic. email: zd.hruskova@gmail.com

**Pippias Maria MBChB**, ERA-EDTA Registry, Department of Medical Informatics, Academic Medical Center, Amsterdam Public Health Research Institute, University of Amsterdam, Amsterdam, the Netherlands. email: m.pippias@amc.nl

**Stel Vianda S. PhD**, ERA-EDTA Registry, Department of Medical Informatics, Academic Medical Center, Amsterdam Public Health Research Institute, University of Amsterdam, Amsterdam, the Netherlands. email: v.s.stel@amc.nl

**Abad-Díez Jose M. MD MPH**, Renal Registry of Aragon, Aragon Health Service, Spain. email: jmabaddiez@gmail.com

**Benítez Sánchez Manuel MD**, Hospital Juan Ramón Jiménez.Huelva. Andalusia. Spain. email: manuelbenitezsanchez@gmail.com

**Caskey Fergus J. MD**, 1.UK Renal Registry, Southmead Hospital, Bristol, BS10 5NB, UK. 2. Population Health Sciences, University of Bristol, Bristol, BS8 2PS, UK. email: mdfjc@bristol.ac.uk

**Collart Frederic MD**, French-Belgian ESRD Registry, Brussels, Belgium. email: Frederic.collart@chu-brugmann.be

**De Meester Johan MD PhD**, Department of Nephrology, Dialysis and Hypertension, Dutch-speaking Belgian Renal Registry (NBVN), Sint-Niklaas, Belgium. email: Johan.DeMeester@aznikolaas.be

1 **Finne** Patrik MD PhD, 1.Department of Nephrology, Helsinki University and Helsinki  
2 University Hospital, Helsinki, Finland, 2. Finnish Registry for Kidney Diseases, Helsinki,  
3 Finland. email: patrik.finne@helsinki.fi  
4  
5

6 **Heaf** James G. MD DMSc, Department of Medicine, Zealand University Hospital, Roskilde,  
7 Denmark. email: heaf@dadlnet.dk  
8  
9

10 **Magaz** Angela PhD: Unidad de Información sobre Pacientes Renales de la Comunidad  
11 Autónoma del País Vasco (UNIPAR), Basque country, Spain. email: amagaz@gac.com.es  
12  
13

14 **Palsson** Runolfur MD, 1. Division of Nephrology, Landspítali - The National University  
15 Hospital of Iceland, Reykjavik, Iceland, 2. Faculty of Medicine, School of Health Sciences,  
16 University of Iceland, Reykjavik, Iceland. email: runolfur@landspitali.is  
17  
18

19 **Reisæter** Anna Varberg MD, PhD, Department of Transplantation Medicine, Oslo University  
20 Hospital, Rikshospitalet, Norway. email: areisate@ous-hf.no  
21  
22

23 **Salama** Alan David MBBS PhD FRCP, University College London Centre for Nephrology,  
24 Royal Free Hospital, London, United Kingdom. email: a.salama@ucl.ac.uk.  
25  
26

27 **Segelmark** Mårten MD PhD, Department of Medical and Health Sciences and Department of  
28 Nephrology, Linköping University, Linköping, Sweden. email: marten.segelmark@liu.se  
29  
30

31 **Traynor** Jamie P. MD, Scottish Renal Registry, ISD Scotland, 5 Cadogan Street, Glasgow,  
32 G2 6QE, Scotland. email: jamie.traynor@nhs.net  
33  
34

35 **Massy** Ziad A. MD, PhD, 1. Division of Nephrology, Ambroise Paré University Hospital,  
36 APHP, Boulogne-Billancourt, France. 2. Institut National de la Santé et de la Recherche  
37 Médicale (INSERM) U1018, Team 5, CESP UVSQ, and University Paris Saclay, Villejuif,  
38 France. email: ziad.massy@aphp.fr  
39  
40

41 **Jager** Kitty J., MD PhD, ERA-EDTA Registry, Department of Medical Informatics,  
42 Academic Medical Center, Amsterdam Public Health Research Institute, University of  
43 Amsterdam, Amsterdam, the Netherlands. email: k.j.jager@amc.nl  
44  
45

46 **Tesar** Vladimir MD PhD, Department of Nephrology, 1st Faculty of Medicine, Charles  
47 University and General University Hospital, Prague, Czech Republic. email:  
48 Vladimir.Tesar@vfn.cz  
49  
50

51 **Corresponding author:**  
52  
53  
54  
55

1 Maria Pippias, ERA-EDTA Registry, Department of Medical Informatics, Academic Medical  
2 Center, Amsterdam Public Health Research Institute, University of Amsterdam, Amsterdam,  
3 the Netherlands. email: m.pippias@amc.nl  
4

5 **Word count:** Abstract: 298. Main text: 3,481  
6

7 **Short title:** Scleroderma and ESRD in the ERA-EDTA Registry  
8  
9  
10  
11  
12  
13  
14  
15  
16  
17  
18  
19  
20  
21  
22  
23  
24  
25  
26  
27  
28  
29  
30  
31  
32  
33  
34  
35  
36  
37  
38  
39  
40  
41  
42  
43  
44  
45  
46  
47  
48  
49  
50  
51  
52  
53  
54  
55  
56  
57  
58  
59  
60  
61  
62  
63  
64  
65

## ABSTRACT

**Rational & Objective:** Data on outcomes of patients with end-stage renal disease (ESRD) secondary to systemic sclerosis (scleroderma) requiring renal replacement therapy (RRT) is limited. We examined the incidence, prevalence and outcomes of European patients starting RRT for ESRD due to scleroderma.

**Study Design:** Cohort study.

**Setting & Participants:** Nineteen renal registries providing data to the ERA-EDTA Registry between 2002-2013.

**Predictor:** Patients with scleroderma versus two age- and sex-matched control groups without scleroderma (diabetes mellitus and disease other than diabetes).

**Outcomes:** Incidence, prevalence and survival.

**Analytic approach:** Incidence and prevalence was standardised to the European Union of 2005. Survival analyses were performed using Kaplan Meier and Cox regression.

**Results:** 342 patients with scleroderma (0.14% incident RRT patients) were included. The adjusted annual incidence of RRT for ESRD due to scleroderma varied between 0.11-0.26 per million population and the adjusted prevalence between 0.73-0.95. Recovery of independent renal function was greatest in the scleroderma group (7.6% vs. 0.6% in diabetes and 2.1% in non-diabetes, both  $P < 0.001$ ), though time required to achieve recovery was longer. In patients with scleroderma, 5-year survival probability from day 91 of RRT was 38.9% (95% confidence interval (CI):32.0%-45.8%), 5-year post-transplant patient survival was 88.2% (95%CI:75.3%-94.6%) and 5-year allograft survival was 72.4% (95%CI:55.0%-84.0%). The adjusted mortality from day 91 on RRT was higher in patients with scleroderma than in both control groups (hazard ratio: 1.25, 95%CI:1.05-1.48, and 2.00 95%CI=1.69-2.39). In contrast, patient and graft survival after kidney transplantation did not differ between patients with scleroderma and other groups.

1  
2  
3  
4  
5  
6  
7  
8  
9  
10  
11  
12  
13  
14  
15  
16  
17  
18  
19  
20  
21  
22  
23  
24  
25  
26  
27  
28  
29  
30  
31  
32  
33  
34  
35  
36  
37  
38  
39  
40  
41  
42  
43  
44  
45  
46  
47  
48  
49  
50  
51  
52  
53  
54  
55  
56  
57  
58  
59  
60  
61  
62  
63  
64  
65

**Limitations:** No data on extra-renal manifestations, treatment or recurrence.

**Conclusions:** Survival in patients with scleroderma ~~from day 91 of~~ RRT was worse than in other causes of ESRD. Patient survival after transplantation was similar to the control groups.

In this study, patients with scleroderma had higher renal function recovery rates than controls.

**Index words:** incidence, dialysis, end-stage renal disease, outcomes, scleroderma, kidney transplantation

**Summary:** Scleroderma is a rare chronic connective tissue disease with multi-organ involvement. There is limited published data on the outcomes of patients with end-stage renal disease (ESRD) secondary to scleroderma requiring renal replacement therapy (RRT); i.e. dialysis or kidney transplantation. In this European matched-cohort study we examined the incidence, prevalence and outcomes of 342 patients receiving RRT for ESRD due to scleroderma between 2002-2013. The matched controls had a diagnosis of diabetes mellitus or all other diagnoses except diabetes mellitus or scleroderma. Patients with scleroderma receiving RRT had a higher rate of kidney function recovery than the matched controls, though their overall survival was worse. Transplanted patients with scleroderma showed similar survival to the matched-controls, supporting the practice of kidney transplantation in these patients. However, given that these patients had a relatively high rate of recovery of their kidney function after starting dialysis we recommend a period of observation before kidney transplantation is performed.

## INTRODUCTION

Systemic sclerosis (also referred to as scleroderma) is a rare chronic connective tissue disease with multi-organ involvement characterized by immune activation, vasculopathy, fibroblast dysfunction and excessive collagen accumulation in the skin and internal organs [1-3].

Renal disease in patients with scleroderma, particularly scleroderma renal crisis, result in significant morbidity and mortality [1]. Scleroderma renal crisis typically manifests with an acute onset of accelerated hypertension, rapidly progressive renal failure, frequently accompanied by microangiopathic haemolytic anaemia and thrombocytopenia. Occurring in approximately 3-10% of the scleroderma population, severe renal disease is commonly seen in patients with diffuse rather than limited cutaneous scleroderma [1, 4]. Until the 1970s, scleroderma renal crisis was recognized as the main cause of death in patients with scleroderma, though since the introduction of treatment with ACE inhibitors and reduction of corticosteroid doses the prognosis has substantially improved [4]. Nevertheless, about 25-50% of patients with scleroderma renal crisis will develop end-stage renal disease (ESRD) and the mortality associated with this condition remains high [1, 3-7].

There is limited knowledge regarding the prevalence of scleroderma renal crisis requiring renal replacement therapy (RRT) [8] and due to the infrequency of this condition there are a limited number of large multicentre or registry-based studies available [3-7, 9-11]. While the outcome of patients with scleroderma on dialysis seems to be uniformly worse than that of patients with other causes of ESRD [7, 11], the outcomes of kidney transplantation are less clear. It is known that renal function may recover after commencing RRT and there is an ongoing discussion regarding the optimal timing of kidney transplantation in patients with scleroderma [5, 12, 13].

We analysed the trends in incidence and prevalence of RRT for ESRD due to scleroderma in the European Renal Association - European Dialysis and Transplant Association (ERA-

1 EDTA) Registry and determined the patient characteristics, patient survival on RRT, patient  
2 and graft survival after kidney transplantation and causes of death in a large cohort of  
3  
4 European patients initiating RRT between 2002 and 2013.  
5  
6  
7  
8

## 9 **METHODS**

### 10 **Patients and data collection**

11  
12 The ERA-EDTA Registry collects data annually on patients starting RRT from national and  
13 regional renal registries in Europe. Renal registries sending individual patient level data to the  
14 ERA-EDTA Registry between 2002 and 2013, with at least 50% percent coverage of the  
15 general population were included in the study. The renal registries included were Austria,  
16 Dutch-speaking Belgium, French-speaking Belgium, Denmark, Finland, Greece, Iceland, the  
17 Netherlands, Norway, the Spanish regional renal registries of Andalusia, Aragon, Asturias,  
18 Basque Country, Cantabria, Castile and León, Catalonia, and Valencia, Sweden, United  
19 Kingdom: England, Northern Ireland and Wales, and United Kingdom: Scotland. The details  
20 of methods of data collection and data processing are described elsewhere [14]. The cause of  
21 death was defined and categorized according to the ERA-EDTA coding system [14]. All  
22 national and regional registries contributing data to the ERA-EDTA Registry followed  
23 national legislation with regard to ethics committee approval. Additional informed patient  
24 consent was not required for this study due to the de-identified nature of the information  
25 obtained.  
26  
27  
28  
29  
30  
31  
32  
33  
34  
35  
36  
37  
38  
39  
40  
41  
42  
43  
44  
45  
46  
47  
48  
49  
50

### 51 ***Cases and matched control groups***

52 The incidence, prevalence and patient survival on RRT analyses refer to patients starting RRT  
53 for ESRD due to “systemic sclerosis (scleroderma)” (ERA-EDTA primary renal disease  
54 [PRD] code 87 [14]), as recorded by the responsible physician. Patient and graft survival after  
55  
56  
57  
58  
59  
60  
61  
62  
63  
64  
65

1 kidney transplantation refer to all patients with a diagnosis of scleroderma, or the matched  
2 controls (described below) who received their first kidney-only transplant between 1<sup>st</sup> January  
3  
4 2002 and 31<sup>st</sup> December 2013. This included patients who commenced RRT for ESRD before  
5  
6 2002. Age and sex were compared between scleroderma and non-scleroderma patients. We  
7  
8 then formed two matched control groups of patients without scleroderma: 1) diabetes mellitus  
9  
10 as a primary renal disease (PRD codes 80 and 81); and 2) patients without scleroderma and  
11  
12 without diabetes mellitus (“non-diabetes”) as a primary renal disease. Due to the low number  
13  
14 of scleroderma patients, we matched 10 controls to 1 case. We matched on age group at the  
15  
16 start of RRT (5-year age groups) and sex, when comparing patients receiving RRT. When  
17  
18 comparing transplant recipients we matched on age group at the time of kidney  
19  
20 transplantation (5-year age groups) and sex.  
21  
22  
23  
24  
25  
26  
27  
28

### 29 **Statistical analysis**

30  
31 Time trends in the incidence of RRT per million population (pmp) were studied by year  
32  
33 according to the date of RRT onset for all participating European countries/regions combined.  
34  
35 Incidence was then assessed by country/region for the whole study period. Time trends in the  
36  
37 prevalence of RRT pmp by year, defined as the number of patients alive and receiving RRT  
38  
39 on 31<sup>st</sup> December of that year, divided by the mid-year general population, were studied for  
40  
41 all participating European countries/regions. Incidence and prevalence rates were adjusted for  
42  
43 age and sex using the European Standard Population of 2005 as a reference [15]. The time  
44  
45 trends for the incidence rates and prevalence were estimated using Poisson regression, with  
46  
47 the observed rate as the outcome and the year as the explanatory variable. The mean  
48  
49 percentage annual change (MPAC) and its 95% confidence interval were computed from each  
50  
51 model as  $[\exp(\beta)-1] \times 100$ , where  $\beta$  denotes the regression coefficient of time (i.e., change in  
52  
53 the event rate per year). To examine whether the trends were linear, we performed Joinpoint  
54  
55  
56  
57  
58  
59  
60  
61  
62  
63  
64  
65



1 regression analysis. Joinpoint regression allows the identification of points in time where a  
2 significant change in the linear slope of a trend occurs. The analysis starts with zero joinpoints  
3  
4 (i.e. a straight line) and then tests whether one or more joinpoints are significantly different  
5  
6 and must be added to the model [16]. This was performed using the Joinpoint software  
7  
8  
9 (version 4.0.4) [17].  
10

11 To compare the characteristics of scleroderma patients receiving RRT with each of the  
12  
13 matched control groups separately, the Wilcoxon signed-rank test was used for continuous  
14  
15 variables with a skewed distribution, and the McNemar square test for categorical variables.  
16  
17

18 A two-tailed p-value <0.05 was considered as statistically significant. The first treatment  
19  
20 modality was defined as treatment at day 91 after the start of RRT, as some patients received  
21  
22 haemodialysis (HD) for a short period, while preparations were made for peritoneal dialysis  
23  
24 (PD).  
25  
26  
27

28 The Kaplan-Meier method and Cox regression analysis were used for the survival analyses.  
29

30 The patient survival on RRT was examined for individuals who initiated RRT for ESRD due  
31  
32 to scleroderma between 2002 and 2013, and was compared with each of the matched control  
33  
34 groups separately. Day 91 after the onset of RRT was taken as the starting point for these  
35  
36 survival analyses. The death of the patient was the event studied. Follow-up time was  
37  
38 censored at recovery of renal function, loss to follow-up and the end of the follow-up period  
39  
40 (31<sup>st</sup> December 2013). Within the Cox regression analysis we took the strata (matched  
41  
42 groups) into account. Patient survival on RRT was adjusted for time period (with three  
43  
44 intervals, 2002-2005, 2006-2009 and 2010-2013) and country. Patient and graft survival after  
45  
46 kidney transplantation was examined for patients who received their first transplant between  
47  
48 2002 and 2013 (regardless of the RRT start date). The scleroderma group was compared with  
49  
50 each of the matched control groups separately. In these analyses the date of the first kidney  
51  
52 transplant was defined as the first day of follow-up. For patient survival after transplantation,  
53  
54  
55  
56  
57  
58  
59

1 the event studied was death, and in case of graft survival, the events were graft failure and  
2 death. Reasons for censoring were loss to follow-up and the end of follow-up period (31<sup>st</sup>  
3  
4 December 2013). In the Cox regression analysis, patient and graft survival were adjusted for  
5  
6 time period (as described above), country and donor type.  
7  
8

9 All analyses were performed using SAS 9.3.  
10  
11

## 12 **RESULTS**

### 13 *Incidence and prevalence*

14 A total of 342 patients with scleroderma were identified; comprising 0.14% of 236,082  
15  
16 patients starting RRT between 2002 and 2013.  
17  
18

19 The adjusted incidence of RRT for ESRD due to scleroderma between 2002 and 2013 was  
20  
21 0.18 pmp, ranging from 0.0 to 0.25 pmp between regions/countries (*Table 1*). The adjusted  
22  
23 incidence of RRT for ESRD due to scleroderma was 0.26 pmp in 2002 and 0.12 pmp in 2013  
24  
25 (*Table 2*). There was a trend towards a decline in the incidence pmp over time but this did not  
26  
27 reach statistical significance (MPAC = -3.6; [95%CI: -7.9; 0.8]).  
28  
29

30 During the study period, the adjusted prevalence of RRT for ESRD due to scleroderma varied  
31  
32 between 0.73 and 0.95 pmp per year (*Table 2*) with a statistically significant increase in the  
33  
34 prevalence pmp (MPAC = 2.0; [95%CI: 1.0; 2.9]).  
35  
36

### 37 *Patient characteristics*

38 Patients commencing RRT for ESRD due to scleroderma were significantly younger than  
39  
40 patients (before matching) with other diagnoses (median age [25<sup>th</sup>-75<sup>th</sup> percentile] 59.9 [50.2-  
41  
42 68.2] years for patients with scleroderma vs. 67.2 [54.4-76.1] years for all non-scleroderma  
43  
44 patients; P<0.001). The proportion of women within the scleroderma group was higher than  
45  
46 that of non-scleroderma group (68.1% vs. 38.2%; P<0.001).  
47  
48  
49  
50  
51  
52  
53  
54  
55  
56  
57  
58  
59  
60  
61  
62  
63  
64  
65

1 | Baseline The group characteristics for the first 90 days or beyond the first 90 days are  
2 | displayed in *Table 3* for patients initiating RRT for ESRD due to scleroderma and for the  
3 | control groups, matched on age group and sex. The treatment modality at day 91 after the start  
4 | of RRT was different in patients with scleroderma compared with the matched control groups,  
5 | with a higher percentage of HD in the scleroderma patients (*Table 3*;  $P \leq 0.01$  for both  
6 | comparisons).

7 | A higher number of deaths during the first 90 days on RRT was observed in the scleroderma  
8 | patients compared with both matched control groups (12.6% vs. 3.9% and 4.0%, respectively,  
9 | *Table 3*;  $P < 0.001$  for both comparisons).

10 | The percentage of patients who achieved dialysis independency during the first 90 days on  
11 | RRT did not differ between the scleroderma patients and the matched control groups.

12 | However, a higher proportion of patients with scleroderma recovered renal function beyond  
13 | this time period (7.6% vs. 0.7% and 2.0% in the matched control groups diabetes and non-  
14 | diabetes, respectively; both  $P < 0.001$ ). In patients who recovered renal function, the time to  
15 | recovery was longer in those with a diagnosis of scleroderma than in both matched control  
16 | groups (median 255.5 days [25<sup>th</sup>-75<sup>th</sup> percentile]: 130-454] vs. 112.0 [40.5-178] days  
17 | (diabetes) and 167.5 [60-353] days (non-diabetes); both  $P < 0.05$ ). The vast majority of  
18 | patients who recovered renal function were female; 80.8% in patients with scleroderma,  
19 | 83.2% for the matched control group with diabetes mellitus ( $p < 0.05$ ) and 60.0% in the non-  
20 | diabetics matched control group ( $p < 0.001$ ). Median age was significantly lower in patients  
21 | with scleroderma who recovered renal function than in both matched control groups (median  
22 | 52.1 [25<sup>th</sup>-75<sup>th</sup> percentile: 47.9-56.8] vs. 64.6 [54.8-71.7] (diabetes) and 60.6 [50.4-66.3] (non-  
23 | diabetes) ( $p < 0.05$ ). A total of 46 of the 342 (13.7%) scleroderma patients who started RRT  
24 | between 2002 and 2013 received a kidney transplant during the study period. This percentage

1 was 18.7% for the control group diabetes mellitus and 27.1% for the control group non-  
2 diabetes mellitus (both  $p < 0.001$  in comparison with scleroderma patients).  
3  
4  
5  
6

### 7 ***Patient survival on RRT***

8  
9 Figure 1a depicts the 5-year patient survival on RRT after day 91 for patients who started  
10 RRT for ESRD due to scleroderma (38.9% [95% CI: 32.0% - 45.8%]) and for the matched  
11 control groups diabetes mellitus (46.0% [95% CI: 43.9% - 48.0%]), and non-diabetes mellitus  
12 (63.6% [95% CI: 61.6% - 65.6%]).  
13  
14  
15  
16  
17

18 After adjustment for time period and country, the mortality from day 91 after the  
19 commencement of RRT was higher in patients with scleroderma than in both matched control  
20 groups (i.e. diabetes and non-diabetes, HR= 1.25 [95% CI: 1.05 – 1.48] and 2.00 [95% CI:  
21 1.69-2.39], respectively; Figure 2a).  
22  
23  
24  
25  
26  
27  
28  
29  
30

### 31 ***Patient and graft survival after kidney transplantation***

32  
33 Of the 57 patients with scleroderma who received their first kidney transplant between 2002  
34 and 2013, the percentage of patients with a living donor transplant was 35.6% in the  
35 scleroderma group, and 17.8% and 29.8% in the matched control groups of diabetes and non-  
36 diabetes, respectively.  
37  
38  
39  
40  
41  
42

43 The median time on dialysis before receiving their first transplant was significantly greater in  
44 the patients with scleroderma (2.9 years [25<sup>th</sup>-75<sup>th</sup> percentile:1.6-4.7]) compared with the  
45 matched control groups (diabetes: 1.6 years [0.8-2.9]; and non-diabetes: 1.6 years [0.5-3.6],  
46 both  $p < 0.001$ ).  
47  
48  
49  
50  
51  
52

53 Figure 1b and 1c present the 5-year patient and graft survival after receiving a first kidney  
54 transplant, respectively, for patients with scleroderma (88.2% [95% CI: 75.3% - 94.6%]) and  
55 72.4% [95% CI: 55.0% - 84.0%]) and for the matched control groups with diabetes mellitus  
56  
57  
58  
59

1 (84.3% [95%CI: 80.5% - 87.4%] and 76.5% [95%CI: 72.2% - 80.3%]) and non-diabetes  
2 patients (89.3% [95%CI: 86.0% - 91.8%] and 81.5% [95%CI: 77.6% - 84.8%]), matched on  
3  
4 age group at kidney transplantation and sex.  
5  
6

7 The risk of death for patients with scleroderma after kidney transplantation, adjusted for  
8  
9 country, time period and donor type, did not differ from patients with diabetes or non-diabetes  
10  
11 (Figure 2b). Similarly, graft survival adjusted for country, time period and donor type did not  
12  
13 differ between the patients with scleroderma and the matched control groups (Figure 2c).  
14  
15  
16

### 17 18 19 *Causes of death*

20  
21 Table 4 shows the causes of death for patients who started RRT for ESRD due to scleroderma  
22  
23 and for the matched control groups since day 91. Patients with scleroderma had fewer deaths  
24  
25 due to cardiovascular events (particularly myocardial ischemia and cardiac arrest) compared  
26  
27 with the matched control group of patients with diabetes. Compared with the matched control  
28  
29 group of patients with non-diabetes, there were fewer deaths due to malignancy and cardiac  
30  
31 arrest among the patients with scleroderma. Conversely, there were more deaths due to heart  
32  
33 failure. A large proportion of deaths in the patients with scleroderma were reported as  
34  
35 “miscellaneous” or unknown.  
36  
37  
38  
39  
40  
41  
42  
43

## 44 **DISCUSSION**

45 Systemic sclerosis is a very rare cause of ESRD, and as such analysis of this condition  
46  
47 requires multi-centre, multi-national studies performed over a long period of time. This study  
48  
49 describes the characteristics and outcomes of patients with scleroderma requiring RRT in a  
50  
51 large European cohort. We found that the age and sex adjusted incidence of RRT for ESRD  
52  
53 due to scleroderma between 2002 and 2013 was only 0.18 pmp. There was a trend towards a  
54  
55 decline in the incidence over time but this did not reach statistical significance. Conversely  
56  
57  
58  
59

1 the prevalence significantly increased over the time period from 0.80 pmp in 2002 to 0.89  
2 pmp in 2013. Furthermore, we observed that survival on RRT in patients with scleroderma  
3  
4 was worse than in other causes of ESRD, whilst transplant recipients with scleroderma  
5  
6 showed a similar survival to the control groups.  
7

8  
9 Scleroderma is a rare disease with an estimated annual incidence of 10-20 pmp and a  
10  
11 prevalence of about 30-300 pmp. The occurrence of scleroderma is presumed to be higher in  
12  
13 North America or Australia than in Europe or Asia, even though epidemiological studies are  
14  
15 difficult to perform due to the low incidence and heterogeneity of the disease [18, 19]. The  
16  
17 overall prevalence of scleroderma in the general population has been reported to increase,  
18  
19 probably due to a greater awareness of the disease and improved patient survival [20],  
20  
21 whereas there is in more recent studies some evidence suggesting a lower incidence of  
22  
23 scleroderma renal crisis [1]. In keeping with this observation, we observed a non-statistically  
24  
25 significant trend towards a decline in the incidence of RRT for ESRD due to scleroderma over  
26  
27 time. However, as frequently seen in rare diseases with low numbers of patients, the number  
28  
29 of cases in each year fluctuated. In Australia and New Zealand the incidence of patients with  
30  
31 scleroderma requiring RRT for ESRD declined significantly between 2002 and 2013, from  
32  
33 0.51 pmp to 0.18 pmp [21]. The prevalence of RRT for ESRD caused by scleroderma  
34  
35 increased during the study period. This is most likely explained by the improved survival of  
36  
37 patients with scleroderma receiving RRT.  
38  
39  
40  
41  
42  
43  
44

45 In this study, patients with scleroderma were less likely to be treated with PD than  
46  
47 haemodialysis when compared with the matched control groups. This is in contrast to the data  
48  
49 from the Australian and New Zealand registry where the use of PD was more common in  
50  
51 patients with scleroderma than in patients with other causes of ESRD. However, PD is also a  
52  
53 more frequent treatment option for ESRD in Australia than in Europe [11]. The choice of the  
54  
55  
56  
57  
58  
59  
60  
61  
62  
63  
64  
65

1 “optimal” modality of RRT in patients with scleroderma is generally considered problematic  
2 [22].  
3

4 Scleroderma has long been recognized as a condition with a relatively high probability of  
5 renal recovery, even in patients requiring long-term dialysis [23]. This has important  
6 implications regarding the timing of kidney transplantation and some authors have  
7 recommended treating patients initially with dialysis for up to two years [13], whereas, for  
8 instance, the Canadian guidelines suggest that kidney transplantation could be considered in  
9 patients with scleroderma who have had quiescent disease for at least six months off cytotoxic  
10 agents and have limited extra-renal disease [12]. Previous reports have described renal  
11 recovery in patients with scleroderma to be as high as 38% [1, 6]. However the Australian and  
12 New Zealand Registry, which includes patients with presumed ESRD [11], reported renal  
13 recovery at 10%, which is similar to the 7.6% observed in our study. The proportion of  
14 patients with presumed ESRD who recovered renal function in this study was higher in  
15 patients with ESRD secondary to scleroderma than in patients with other causes of ESRD. It  
16 has been previously noted that systemic autoimmune diseases commonly show higher  
17 recovery rates than other PRDs [24, 25]. Importantly, 25% of patients who recovered renal  
18 function in the current study discontinued dialysis after more than 15 months of RRT,  
19 supporting the recommendation of delaying kidney transplantation in these patients. This may  
20 explain why the time spent on dialysis before transplantation was longer in patients with  
21 scleroderma than in the matched control groups in our study.  
22

23 In previous studies exploring the survival of patients with scleroderma receiving RRT, a  
24 diagnosis of scleroderma mostly showed unfavourable outcomes [7, 11, 25] and was even  
25 identified as an independent predictor of death (HR of 2.47) [11]. Similarly, in the present  
26 study, we confirmed that both early and long-term mortality of patients with scleroderma  
27 receiving RRT remains high, and that the prognosis is worse than that of RRT patients with  
28

1 diabetes. Among the causes of death, cardiovascular events, especially ischemic heart disease,  
2 were much less common in patients with scleroderma than in patients with diabetes.  
3

4 Nevertheless, detailed evaluation of the causes of death was limited due to the high number of  
5 unknown or miscellaneous causes reported in the patients with scleroderma.  
6

7 Interestingly, patient and graft survival after kidney transplantation did not differ between  
8 patients with scleroderma and other PRDs. Given the poorer survival outcomes in patients  
9 with scleroderma, but similar post-transplant survival outcomes one must consider it likely  
10 that bias towards transplanting patients with scleroderma without major comorbidities i.e. the  
11 healthiest patients exists. Furthermore given the small samples size one cannot rule out a  
12 possible type 2 error. Nevertheless, our findings support the use of kidney transplantation in at  
13 least some patients with scleroderma, preferably those without major extra-renal  
14 complications, although transplantation should be delayed due to the aforementioned chance  
15 of renal recovery. The 5-year graft survival rate of 72.4% in our study is greater than the 3-  
16 year graft survival of 60.3% in the study by Gibney et al. [9], or the 5-year graft survival of  
17 56.7% in the study by Pham et al. [26], both using United States (US) data. Although direct  
18 comparison is hardly possible, it may suggest improving survival over time, even though  
19 there are known geographical differences, with a somewhat better graft survival in Europe  
20 than in the US [27].  
21  
22  
23  
24  
25  
26  
27  
28  
29  
30  
31  
32  
33  
34  
35  
36  
37  
38  
39  
40  
41  
42

43 We are aware of the potential limitations of this study that include the registry-based nature of  
44 the data with a lack of detailed information regarding the disease course of individual  
45 patients, for example, disease duration prior to RRT, renal biopsy results, extent of extra-renal  
46 involvement, administered treatment, or disease recurrence after kidney transplantation. As  
47 such there are known and unknown factors which we cannot take into account within this  
48 study. It is known that ESRD in some patients with scleroderma is not necessarily caused  
49 solely by scleroderma renal crisis, they may have for example normotensive renal crisis,  
50  
51  
52  
53  
54  
55  
56  
57  
58  
59  
60  
61  
62  
63  
64  
65



1 penicillamine-associated nephropathy, scleroderma-associated vasculopathy, a mixed disease  
2 and overlap with for example, ANCA-associated vasculitis, in which case their renal survival  
3  
4 and renal outcomes may be different [1, 28]. However, we were not able to distinguish such  
5  
6 mixed causes of ESRD. Furthermore, on occasion it may be difficult to differentiate between  
7  
8 acute cases of kidney failure requiring short-term (but prolonged) dialysis from true ESRD in  
9  
10 patients with a diagnosis of scleroderma. The view regarding such patients may differ  
11  
12 between registries, some of which may not enter patients who recovered renal function as  
13  
14 ESRD into the database, even though the time on dialysis exceeded three months which is  
15  
16 typically the cut-off point for entering a patient requiring long-term RRT into the ESRD  
17  
18 registry. In addition we do not have access to comorbidity data including diabetic status  
19  
20 (beyond diabetes mellitus as a cause of ESRD). Having data on patient co-morbidities is  
21  
22 required to further differentiate patients, for example, this information could have in part,  
23  
24 accounted for the differences in transplantation rates and time to transplantation between  
25  
26 patients with a diagnosis of scleroderma and the control groups. Nor do we have data on  
27  
28 vascular access. Problems related to vascular access in patients with scleroderma may have  
29  
30 contributed to differences in RRT outcomes when compared to control patients, which we are  
31  
32 not aware of. On the other hand, the ERA-EDTA Registry provides a unique opportunity to  
33  
34 analyse a large cohort of European patients with scleroderma receiving RRT and also allows  
35  
36 for the direct comparison of patients with scleroderma with other causes of ESRD.  
37  
38 In conclusion, we show that the overall survival of patients with scleroderma receiving RRT  
39  
40 is worse than that of patients with ESRD due to diabetes or other PRDs. Although limited by  
41  
42 a relatively low number of patients, our results suggest that kidney transplantation may be a  
43  
44 sound therapeutic option in some patients with ESRD due to scleroderma, as graft and patient  
45  
46 survival rates in this study were comparable with other non-diabetic causes of ESRD.  
47  
48  
49  
50  
51  
52  
53  
54  
55  
56  
57  
58  
59  
60  
61  
62  
63  
64  
65

## Acknowledgements

Contributions: research area and study design: ZH, MP, VSS, ADS, KJJ, VT; data acquisition: JMAD, MBS, FJC, FC, JDM, PF, JGH, AM, RP, ARV, MS, JPT; data analysis and interpretation: ZH, MP, VSS, JMAD, MBS, FJC, FC, JDM, PF, JGH, AM, RP, AVR, ADS, MS, JPT, ZAM, KJJ, VT; statistical analysis: ZH, VSS; supervision or mentorship: VSS, KJJ, VT. Each author contributed important intellectual content during manuscript drafting or revision and accepts accountability for the overall work by ensuring that questions pertaining to the accuracy or integrity of any portion of the work are appropriately investigated and resolved.

We would like to thank the patients and the staff of the dialysis and transplant units for contributing the data via their national and regional renal registries. We would also like to thank the following registries for the contribution of data: Austrian Dialysis and Transplant Registry [OEDTR] (R. Kramar); Dutch-speaking Belgian Society of Nephrology [NBVN] (B. De Moor and F. Schroven); French-speaking Belgian Society of Nephrology [GNFB] (JM. des Grottes); Danish Nephrology Registry [DNS]; Finnish Registry for Kidney Diseases; Greek Renal Registry ; Icelandic End-Stage Renal Disease Registry; Dutch End-Stage Renal Disease Registry [RENINE] (M. Hemmelder); Norwegian Renal Registry (T. Leivestad, and A. Åsberg); the Spanish regional registries of Andalusia [SICATA] (P. Castro de la Nuez), Aragon (J.M. Abad Diez), Asturias (J.R. Quirós, and RERCA Working Group), Basque Country [UNIPAR] (I. Moína), Cantabria (M. Arias Rodríguez), Castile and León, Catalonia [RMRC] (E. Arcos, and J. Comas), and Valencian region [REMRENAL]; Swedish Kidney Registry [SNR] (K.G. Prütz, M. Stendahl, M. Evans and S. Schön; UK Renal Registry (All the staff of the UK Renal Registry and of the renal units submitting data); Scottish Renal Registry [SRR] (All of the Scottish renal units); and the other ERA-EDTA Registry committee members not mentioned above for their advice in the analysis and the drafting of

1 this paper: A. Więcek, C. Couchoud, J.W. Groothoff, J. Harambat, M. Nordio, and I. Rychlik;  
2 and A. Kramer, in the AMC Registry office for data collection and management.  
3

4 The ERA-EDTA Registry is funded by the European Renal Association–European Dialysis  
5 and Transplant Association (ERA-EDTA). This article was written by Zdenka Hruskova,  
6  
7 Maria Pippias, Vianda S. Stel, Jose M. Abaz, Manuel Benítez Sánchez, Fergus J. Caskey,  
8  
9 Frederic Collart, Johan De Meester, Patrik Finne, James G. Heaf, Angela Magaz, Runolfur  
10  
11 Palsson, Anna Varberg Reisæter, Alan Salama, Mårten Segelmark, Jamie P. Traynor, Ziad A.  
12  
13 Massy, Kitty J. Jager, and Vladimir Tesar, on behalf of the ERA-EDTA Registry which is an  
14  
15 official body of the ERA-EDTA.  
16  
17  
18  
19  
20

21 Financial Disclosure: The ERA-EDTA Registry is funded by the European Renal  
22  
23 Association-European Dialysis and Transplant Association (ERA-EDTA). The funders of this  
24  
25 study had no role in study design; collection, analysis, and interpretation of data; writing the  
26  
27 report; and the decision to submit the report for publication. There are no conflicts of interest.  
28  
29  
30  
31

## 32 REFERENCES

- 33  
34 1. Shanmugam VK, Steen VD. Renal disease in scleroderma: an update on evaluation, risk  
35  
36 stratification, pathogenesis and management. *Curr Opin Rheumatol* 2012; 24(6): 669-676.  
37  
38
- 39  
40 2. Saketkoo LA, Magnus JH, Doyle MK. The primary care physician in the early diagnosis  
41  
42 of systemic sclerosis: the cornerstone of recognition and hope. *Am J Med Sci.* 2014;  
43  
44 347(1): 54-63.  
45  
46
- 47  
48 3. Guillevin L, Bérezné A, Seror R, et al. Scleroderma renal crisis: a retrospective  
49  
50 multicentre study on 91 patients and 427 controls. *Rheumatology (Oxford).* 2012; 51(3):  
51  
52 460-7.  
53  
54  
55  
56  
57  
58  
59

- 1  
2  
3  
4  
5  
6  
7  
8  
9  
10  
11  
12  
13  
14  
15  
16  
17  
18  
19  
20  
21  
22  
23  
24  
25  
26  
27  
28  
29  
30  
31  
32  
33  
34  
35  
36  
37  
38  
39  
40  
41  
42  
43  
44  
45  
46  
47  
48  
49  
50  
51  
52  
53  
54  
55  
56  
57  
58  
59  
60  
61  
62  
63  
64  
65
4. Cozzi F, Marson P, Cardarelli S, et al. Prognosis of scleroderma renal crisis: a long-term observational study. *Nephrol Dial Transplant*. 2012; 27(12): 4398-403.
5. Steen VD, Medsger TA, Jr. Long-term outcomes of scleroderma renal crisis. *Ann Intern Med* 2000; 133(8): 600-603.
6. Penn H, Howie AJ, Kingdon EJ, et al. Scleroderma renal crisis: patient characteristics and long-term outcomes. *QJM* 2007; 100(8): 485-494.
7. Abbott KC, Trespalacios FC, Welch PG, Agodoa LY. Scleroderma at end stage renal disease in the United States: patient characteristics and survival. *J Nephrol* 2002; 15(3): 236-240.
8. Guillevin L, Mouthon L. Scleroderma Renal Crisis. *Rheum Dis Clin North Am*. 2015; 41(3): 475-88.
9. Gibney EM, Parikh CR, Jani A, Fischer MJ, Collier D, Wiseman AC. Kidney transplantation for systemic sclerosis improves survival and may modulate disease activity. *Am J Transplant* 2004; 4(12): 2027-2031.
10. Chang YJ, Spiera H. Renal transplantation in scleroderma. *Medicine (Baltimore)* 1999; 78(6): 382-385.
11. Siva B, McDonald SP, Hawley CM, et al. End-stage kidney disease due to scleroderma--outcomes in 127 consecutive ANZDATA registry cases. *Nephrol Dial Transplant* 2011; 26(10): 3165-3171.
12. Knoll G, Cockfield S, Blydt-Hansen T, et al. Canadian Society of Transplantation consensus guidelines on eligibility for kidney transplantation. *CMAJ* 2005; 173(10): 1181-1184.
13. Teixeira L, Mahr A, Berezne A, Noel LH, Guillevin L, Mouthon L. Scleroderma renal crisis, still a life-threatening complication. *Ann N Y Acad Sci* 2007; 1108: 249-258.

- 1  
2  
3  
4  
5  
6  
7  
8  
9  
10  
11  
12  
13  
14  
15  
16  
17  
18  
19  
20  
21  
22  
23  
24  
25  
26  
27  
28  
29  
30  
31  
32  
33  
34  
35  
36  
37  
38  
39  
40  
41  
42  
43  
44  
45  
46  
47  
48  
49  
50  
51  
52  
53  
54  
55  
56  
57  
58  
59  
60  
61  
62  
63  
64  
65
14. ERA-EDTA Registry: ERA-EDTA Registry Annual Report 2013. Academic Medical Center, Department of Medical Informatics, Amsterdam, the Netherlands, 2015
15. Eurostat: <http://epp.eurostat.ec.europa.eu/portal/page/portal/population/data/database>. Table: Average population by sex and five-year age groups. Date of extraction: July 15, 2010.
16. Kim HJ, Fay MP, Feuer EJ, et al. Permutation tests for joinpoint regression with applications to cancer rates. *Stat Med* 2000; 19(3): 335–351.
17. Joinpoint Regression Program, Version 4.0.4. May 2013; Statistical Research and Applications Branch, National Cancer Institute. Available at <http://srab.cancer.gov/joinpoint> [Accessed 2015-10-09].
18. Ranque B, Mouthon L. Geoepidemiology of systemic sclerosis. *Autoimmun Rev.* 2010; 9(5): A311-8.
19. Mayes MD. Scleroderma epidemiology. *Rheum Dis Clin North Am.* 2003; 29(2): 239-54.
20. Chiffot H, Fautrel B, Sordet C, Chatelus E, Sibilia J. Incidence and prevalence of systemic sclerosis: a systematic literature review. *Semin Arthritis Rheum.* 2008; 37(4): 223-35.
21. ANZDATA (Australia and New Zealand Dialysis and Transplant Registry) Annual Report. Available at [http://www.anzdata.org.au/v1/annual\\_reports\\_download.html](http://www.anzdata.org.au/v1/annual_reports_download.html). [Accessed 2017-08-15].
22. Brown N, Summers A, Venning MC, Bruce IN. The challenges of dialysis in systemic sclerosis: between the devil and the deep blue sea? *Case Rep Nephrol.* 2012; 2012:865193.
23. Chu JK, Folkert VW. Renal function recovery in chronic dialysis patients. *Semin Dial.* 2010; 23(6): 606-13.

- 1  
2  
3  
4  
5  
6  
7  
8  
9  
10  
11  
12  
13  
14  
15  
16  
17  
18  
19  
20  
21  
22  
23  
24  
25  
26  
27  
28  
29  
30  
31  
32  
33  
34  
35  
36  
37  
38  
39  
40  
41  
42  
43  
44  
45  
46  
47  
48  
49  
50  
51  
52  
53  
54  
55  
56  
57  
58  
59  
60  
61  
62  
63  
64  
65
24. Hruskova Z, Stel VS, Jayne D, et al. Characteristics and Outcomes of Granulomatosis With Polyangiitis (Wegener) and Microscopic Polyangiitis Requiring Renal Replacement Therapy: Results From the European Renal Association-European Dialysis and Transplant Association Registry. *Am J Kidney Dis.* 2015; 66(4): 613-20.
  25. Nissenson AR, Port FK. Outcome of end-stage renal disease in patients with rare causes of renal failure. III. Systemic/vascular disorders. *Q J Med.* 1990; 74(273): 63-74.
  26. Pham PT, Pham PC, Danovitch GM, et al. Predictors and risk factors for recurrent scleroderma renal crisis in the kidney allograft: case report and review of the literature. *Am J Transplant.* 2005; 5(10): 2565-9.
  27. Gondos A, Döhler B, Brenner H, Opelz G. Kidney graft survival in Europe and the United States: strikingly different long-term outcomes. *Transplantation.* 2013; 95(2): 267-74.
  28. Derrett-Smith EC, Nihtyanova SI, Harvey J, Salama AD, Denton CP. Revisiting ANCA-associated vasculitis in systemic sclerosis: clinical, serological and immunogenetic factors. *Rheumatology (Oxford).* 2013; 52(10): 1824-31.

Table 1. Incidence of renal replacement therapy (RRT) for end-stage renal disease secondary to scleroderma, by country/region from 2002 to 2013

Country	All RRT	Scleroderma			
	N	N	%	N pmp	N pmp*†
Austria	14650	12	0.08	0.12	0.12
Belgium: Dutch-speaking	13968	16	0.11	0.22	0.20
Belgium: French-speaking	9943	11	0.11	0.20	0.23
Denmark	8431	17	0.20	0.26	0.25
Finland	5775	8	0.14	0.13	0.11
Greece	26181	31	0.12	0.23	0.21
Iceland	295	0	0	0	0
Netherlands	22131	37	0.17	0.19	0.19
Norway	5923	5	0.08	0.09	0.08
Spain: Andalusia	11817	11	0.09	0.11	0.12
Spain: Aragon	2031	3	0.15	0.19	0.18
Spain: Asturias	1772	2	0.11	0.15	0.14
Spain: Basque Country	3052	5	0.16	0.20	0.17
Spain: Cantabria	833	0	0	0	0
Spain: Castile and León	3654	8	0.22	0.27	0.23
Spain: Catalonia	12298	20	0.16	0.23	0.24
Spain: Valencian region	8582	7	0.08	0.12	0.12
Sweden	13640	19	0.14	0.17	0.17
United Kingdom	71106	130	0.18	0.19	0.19
<b>All countries</b>	<b>236082</b>	<b>342</b>	<b>0.14</b>	<b>0.18</b>	<b>0.18</b>

\*Pmp=per million population.

†N pmp are adjusted for the age and sex distribution using the European Standard Population of 2005 as reference.

16  
17  
18  
19  
20  
21  
22  
23  
24  
25  
26  
27  
28  
29  
30  
31  
32  
33  
34  
35  
36  
37  
38  
39  
40  
41  
42  
43  
44  
45  
46  
47  
48  
49  
50  
51  
52  
53  
54  
55  
56  
57  
58  
59  
60  
61  
62  
63  
64  
65

Table 2. Incidence and prevalence of renal replacement therapy for end-stage renal disease secondary to scleroderma per million population by year from 2002 to 2013, and the mean percentage annual change (MPAC) with 95% confidence interval (95%CI) for all countries/regions combined, adjusted for age and sex using the European Standard Population of 2005 as a reference.

<b>Year</b>	<b>2002</b>	<b>2003</b>	<b>2004</b>	<b>2005</b>	<b>2006</b>	<b>2007</b>	<b>2008</b>	<b>2009</b>	<b>2010</b>	<b>2011</b>	<b>2012</b>	<b>2013</b>	<b>MPAC (95%CI)</b>
<b>Incidence</b>	0.26	0.22	0.20	0.20	0.17	0.20	0.20	0.11	0.15	0.27	0.14	0.12	-3.6 (-7.9; 0.8)
<b>Prevalence</b>	0.80	0.75	0.73	0.81	0.81	0.90	0.89	0.88	0.85	0.95	0.95	0.89	2.0 (1.0; 2.9)



Table 3. Characteristics of patients with end-stage renal (ESRD) disease secondary to a primary renal disease of scleroderma, or diabetes mellitus, or a primary renal disease other than scleroderma or diabetes mellitus (“non-diabetes”). The latter two groups form the matched-control groups which were matched on day 1 of renal replacement therapy (RRT), based on age group and sex\*. The first part (shaded region) of the table refers to the first 90 days of commencing RRT for ESRD. The second part of the table (unshaded) refers to the group characteristics beyond 90 days of commencing RRT for ESRD.Characteristics and treatment modality at day 91 after the onset of renal replacement therapy (RRT) in patients with end-stage renal disease secondary to scleroderma and control groups matched on age group and sex\*

	Scleroderma	Control group DM#	Control group Non-DM
<u>First 90 days of commencing RRT for ESRD</u>			
Patients at day 1 of RRT, N	342	3420	3420
Female at day 1 of RRT, %	68.1	68.1	68.1
Median age at day 1 of RRT, years [25 <sup>th</sup> -75 <sup>th</sup> percentile]	59.9 [50.2-68.2]	59.8 [50.3-68.1]	59.8 [50.3-68.2]
Patients in whom renal function recovered within 90 days, N [%]	3 (0.9)	21 (0.6)	38 (1.1)
Patients who died within 90 days, N [%]	43 (12.6)	135 (3.9)	138 (4.0)
Loss to follow-up/missing data within 90 days, N [%]	0 (0)	7 (0.2)	15 (0.4)
Treatment discontinued/ limited care within 90 days, N [%]	0 (0)	4 (0.1)	5 (0.2)
<u>Beyond 90 days of commencing RRT for ESRD</u>			
Patients at day 91 after start of RRT, N [% of number of patients at day 1]	296 (86.5)	3253 (95.1)	3224 (94.3)
Female at day 91 of RRT, %	67.2	67.9	68.4
Median age at day 91 of RRT, years [25 <sup>th</sup> -75 <sup>th</sup> percentile]	58.6 [49.4-68.1]	59.9 [50.2-68.2]	59.6 [49.9-68.1]
Treatment modality at day 91			
Haemodialysis, %	83.4	75.9	70.4
Peritoneal dialysis, %	14.9	20.6	22.5
Transplantation, %	1.7	3.5	7.1

\* Control groups were matched on 5-year age groups and sex at day 1 after the initiation of RRT.

# DM = diabetes mellitus as primary renal disease; the matched control groups did not include patients with scleroderma.

Table 4. Causes of death in patients starting renal replacement therapy (RRT) for end-stage renal disease secondary to scleroderma and the matched control groups since day 91

	Scleroderma	Control group*		Control group*	
	n=296	DM n=3,253		Non-DM n= 3,224	
Number of deaths (%)	156 (52.7)	1,613 (49.6)		1,134 (35.2)	
Cause of death	%	%	P value#	%	P value#
Cardiovascular disease	21.2	36.3	<b>&lt;0.001</b>	23.8	0.5
Myocardial ischaemia/infarction	4.5	12.8	<b>0.002</b>	5.5	0.6
Heart failure	8.3	5.3	0.1	4.4	<b>0.03</b>
Cardiac arrest; other cause/unknown	3.9	12.0	<b>0.002</b>	9.1	<b>0.03</b>
Cerebrovascular accident	4.5	6.2	0.4	4.9	0.8
Infection	14.1	17.3	0.3	15.4	0.7
Suicide/refusal of dialysis	3.9	1.7	0.06	2.6	0.4
Withdrawal from dialysis	5.8	5.8	0.9	5.6	0.9
Cachexia	3.9	1.6	0.04	2.0	0.2
Malignancy	1.9	3.8	0.2	10.4	<b>&lt;0.001</b>
Miscellaneous	19.2	12.7	<b>0.02</b>	16.3	0.4
Unknown/unavailable/missing	30.1	20.8	0.007	23.9	0.09

Percentages may not add up to 100% because of rounding off. DM = diabetes mellitus as primary renal disease.

\*Control groups are matched on 5-year age groups and sex; # comparison of control group with patients with scleroderma. The matched control groups did not include patients with scleroderma.

## Legends to Figures

### Figure 1

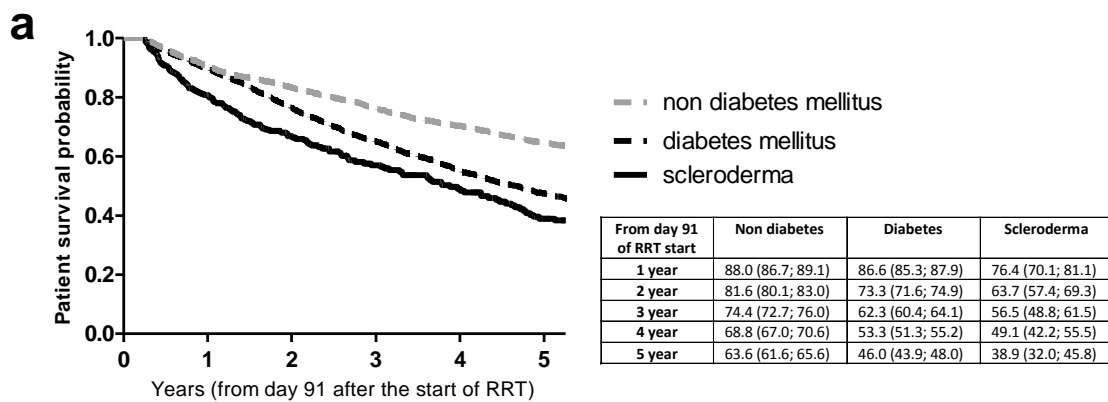
a. Kaplan-Meier survival analyses of patient survival on renal replacement therapy (RRT) for end-stage renal disease secondary to scleroderma (n=296) from day 91, and for the matched control groups with diabetes mellitus (DM; n=3253) and without diabetes mellitus (non-DM; n=3224) as primary renal disease. Control groups are matched on 5-year age groups at the onset of RRT and sex. Median age was 59.9 years and 68.1% were female in the scleroderma group and in each matched control group. The matched control groups did not include patients with scleroderma.

b. Kaplan-Meier survival analyses of patient survival after kidney transplantation for end-stage renal disease secondary to scleroderma (n=57), and for the matched control groups with diabetes mellitus (DM) and without diabetes mellitus (non-DM) as primary renal disease (n=565 for each matched control group). Control groups are matched on 5-year age groups at the time of transplantation and sex. Median age was 49 years and 62.7% were female in the scleroderma group and in each matched control group. The matched control groups did not include patients with scleroderma.

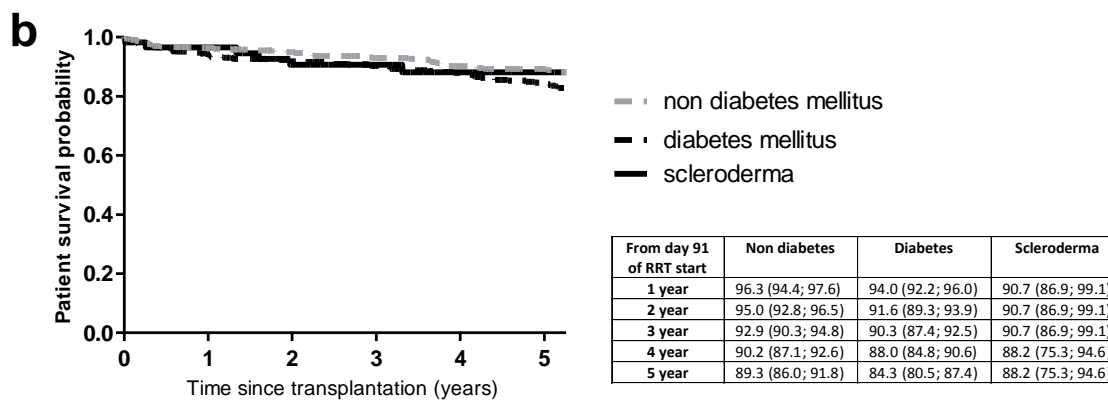
c. Kaplan-Meier survival analyses of graft survival after kidney transplantation for end-stage renal disease secondary to scleroderma (n=57), and for the matched control groups with diabetes mellitus (DM) and without diabetes mellitus (non-DM) as primary renal disease (n=565 for each matched control group). Control groups are matched on 5-year age groups at the time of transplantation and sex. Median age was 49 years and 62.7% were female in the scleroderma group and in each matched control group. The matched control groups did not include patients with scleroderma.

Figure 2.

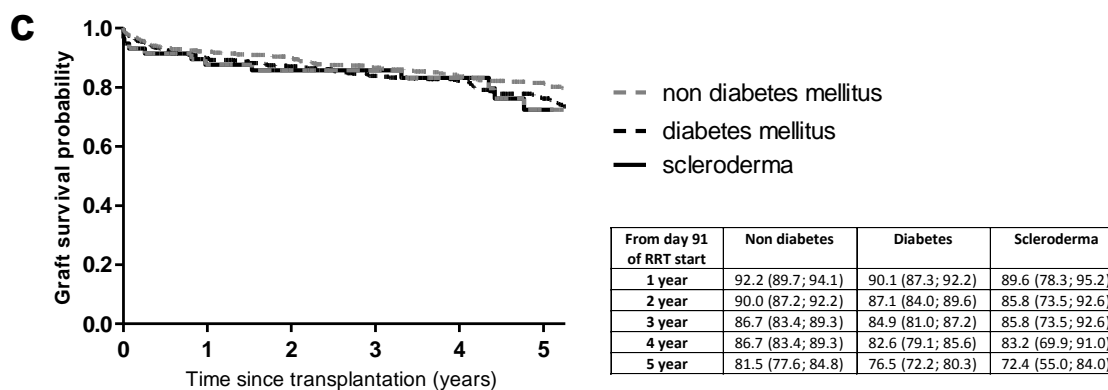
- a. Hazard ratios (HR; 95% confidence intervals) for death on RRT from day 91 for patients with scleroderma versus the matched control groups, unadjusted and adjusted for time period and country. Control groups with diabetes mellitus (DM) and without diabetes mellitus (non-DM) as primary renal disease are matched on 5-year age groups at the onset of renal replacement therapy and sex. The scleroderma group and each matched control group had a median age of 59.9 years and 68.1% were female. The matched control groups did not include patients with scleroderma.
  
- b. Hazard ratios (HR; 95% confidence intervals) for death after kidney transplantation for patients with scleroderma versus the matched control groups, unadjusted and adjusted for time period, country and donor type. Control groups with diabetes mellitus (DM) and without diabetes mellitus (non-DM) as primary renal disease are matched on 5-year age groups at the time of transplantation and sex. The scleroderma group and each matched control group had a median age of 49 years and 62.7% were female. The matched control groups did not include patients with scleroderma.
  
- c. Hazard ratios (HR; 95% confidence intervals) for graft failure after kidney transplantation in patients with scleroderma versus the matched control groups, unadjusted and adjusted for time period, country and donor type. Control groups with diabetes mellitus (DM) and without diabetes mellitus (non-DM) as primary renal disease are matched on 5-year age groups at the time of transplantation and sex. The scleroderma group and each matched control group had a median age of 49 years and 62.7% were female. The matched control groups did not include patients with scleroderma.



Non-DM	3224	2986	2326	1924	1549	1250
DM	3253	3046	2372	1783	1331	982
Scleroderma	296	272	180	127	95	75

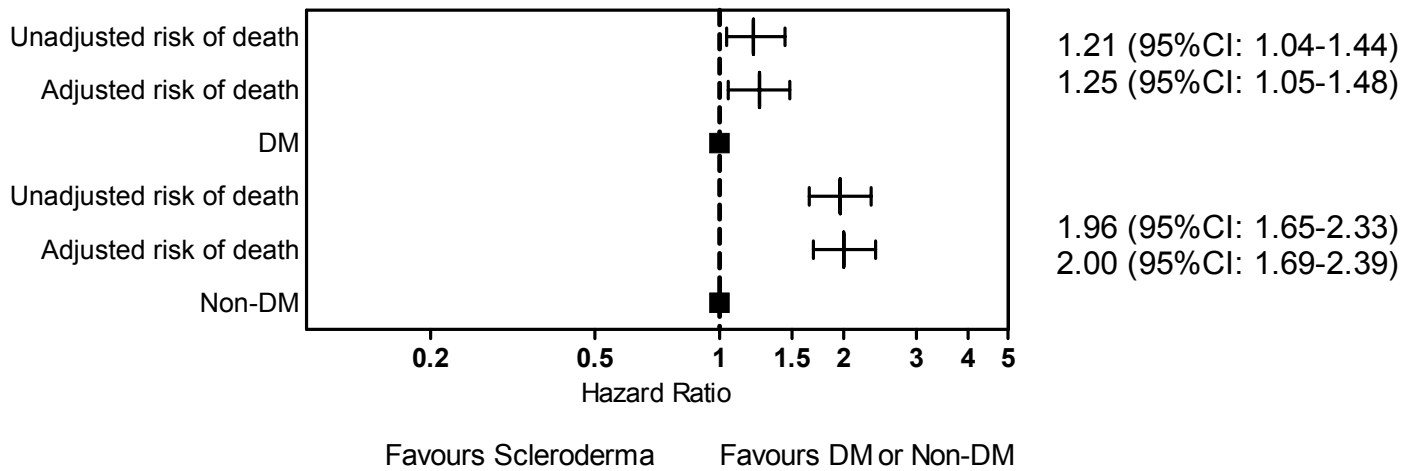


Non-DM	565	487	420	351	291	242
DM	565	477	407	348	284	220
Scleroderma	57	50	42	35	27	22

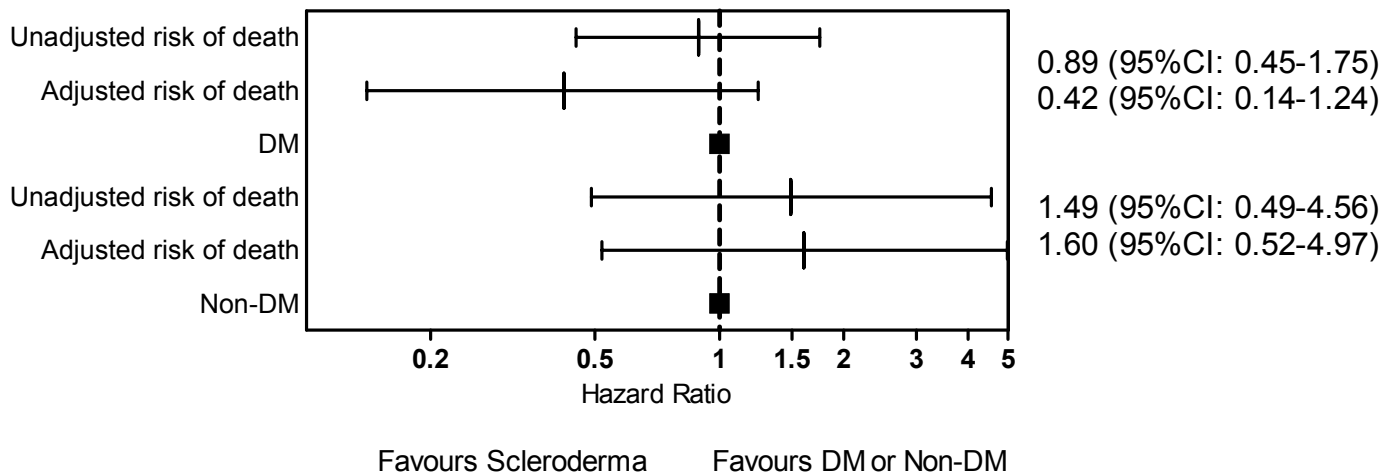


Non-DM	565	454	385	322	265	119
DM	565	466	398	328	272	221
Scleroderma	57	46	39	32	25	17

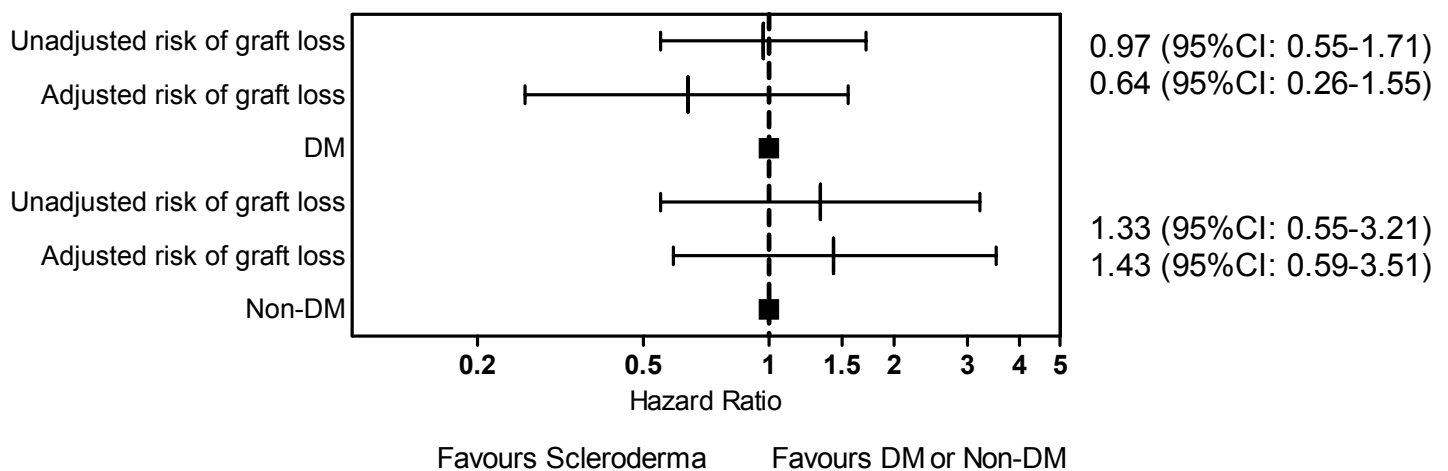
a. Risk of death after day 91 of commencing RRT: patients with scleroderma versus matched DM or Non-DM groups.



b. Risk of death after kidney transplantation: patients with scleroderma versus matched DM or Non-DM groups.



c. Risk of graft failure after kidney transplantation: patients with scleroderma versus matched DM or Non-DM groups.





[Click here to access/download](#)

**Unmarked Revision | Note: must be .DOC(X) or .RTF**  
Scleroderma ERA-EDTA Registry\_Clean.doc

