

# **INTEGRATIVE HUMAN CARDIOVASCULAR FUNCTION IN THE HEAT**

Scott T Chiesa<sup>1</sup>, Steven J Trangmar<sup>2</sup>, Kazuhito Watanabe<sup>3</sup> & José González-Alonso<sup>3,4</sup>

<sup>1</sup>Institute of Cardiovascular Science, University College London, London, UK;

<sup>2</sup>Department of Life Sciences, University of Roehampton, London, UK;

<sup>3</sup>Centre for Human Performance, Exercise and Rehabilitation,  
Brunel University London, Uxbridge, UK

<sup>4</sup>Division of Sport, Health and Exercise Sciences, Department of Life Sciences, Brunel  
University London, Uxbridge, UK

**Key words (5-10):** Physiological strain, blood flow, hydration, hyperthermia, cardiovascular interactions, cardiovascular control

Correspondence to Scott T Chiesa, PhD

Vascular Physiology Unit

Institute of Cardiovascular Science

University College London

1 St. Martin's Le Grand

London, EC1A 4NP

## **ABSTRACT**

Progressive whole-body hyperthermia with passive heat stress is associated with a host of physiological adjustments. These include large increases in cardiac output and a selective redistribution of blood flow from the cerebral and visceral tissues to the limbs, head and torso, with perfusion pressure being only slightly reduced. Aerobic metabolism also increases in these conditions, but the magnitude is small in absolute terms, suggesting a predominant role of thermosensitive mechanisms in passive hyperthermia-induced cardiovascular adjustments. Although exercise heat stress requires substantially greater blood flow requirements compared to passive heat stress alone, the magnitude of this hyperemic response is less than would be expected given the extent to which both conditions independently increase blood flow in isolation. As a result, submaximal exercise limb blood flow is only slightly higher during small muscle mass exercise in the heat, and is similar to control conditions during whole body exercise. When exercise intensity is increased further towards maximal levels, the superimposition of heat stress leads to earlier reductions in regional and systemic blood perfusion, compromised locomotor limb aerobic metabolism, and ultimately results in impaired endurance capacity. This chapter provides an integrative overview of the human cardiovascular response to passive heat stress and exercise heat stress, with emphasis on its consequences on exercise performance in the heat.

## **INTRODUCTION**

When ambient temperature exceeds that of the skin, heat is transferred from the surrounding environment to the cooler body tissues, and internal body temperature begins to rise. With an increase in core temperature of as little as 3-4 °C potentially proving fatal (1), the presence of raised tissue temperatures results in profound changes in vascular tone and cardiac output, alongside a substantial redistribution of blood flow from core to peripheral sites in order to

promote heat loss to the environment (2). Even at rest, the magnitude of increase in cardiac output is striking, with elevations of 5-8 l/min reported during prolonged severe passive heating; an increase second only to that witnessed during aerobic exercise (3,4). This increase in blood flow is directed predominantly to the cutaneous (skin) circulation, aided by hyperthermia-induced vasoconstriction in splanchnic, renal and cerebral vascular beds. Recent evidence suggests that skeletal muscle, fat, and bone blood flow may also contribute to the observed hyperemic response, although the magnitude of this effect appears relatively modest.

The superimposition of exercise onto a hyperthermic individual results in one of the greatest challenges faced by the human cardiovascular system. Even when normothermic, the profound ability of skeletal muscle to vasodilate during intense whole-body exercise (5) exceeds the capacity of the heart to maintain the level of blood flow required for metabolic demand (6,7). When exercise is performed in a hyperthermic state, the combined demand of both skeletal muscle and skin vascular beds for O<sub>2</sub> delivery and heat dissipation – alongside a host of other vascular, hormonal, and neural alterations – can rapidly push the cardiovascular system to its limits (8,9). Despite this, however, mean arterial pressure is only slightly reduced, and cardiac output and active skeletal muscle blood flow are maintained or may even be increased at all but the very highest intensities of whole-body exercise. This chapter aims to document the integrative cardiovascular response to heat stress, firstly during progressive increases in body temperature at rest (i.e. passive heat stress, induced through thermal interventions such as wearing a suit that circulates hot water, exposure to sauna, or hot water baths), followed by cardiovascular adjustments across a spectrum of exercise intensities (i.e. exercise heat stress, primarily via the use of water perfused suit while cycling or exposure to very hot environmental temperatures). As the majority of human research studies in this field have been carried out in young healthy adults, it is important to note that the absolute cardiovascular responses

described in this chapter likely apply to this population alone, and should not be considered representative of other groups such as clinical patients or the elderly. Likewise, conditions such as orthostatic stress, dehydration, or haemorrhage – which may act to further compromise cardiovascular function in the heat – are outside the scope of this chapter, and so will not be addressed.

## **SECTION 1 – RESPIRATORY AND CARDIOVASCULAR RESPONSES TO PASSIVE HEAT STRESS**

The overall respiratory and cardiovascular adjustments observed during passive heat stress are at first glance similar to that observed during exercise; comprising an increase in respiratory rate, an increase in cardiac output, a decrease in peripheral resistance, and a selective elevation and redistribution of blood flow from the core to the extremities (Fig. 1). In contrast to exercise, however, these changes are largely driven by thermoregulatory as opposed to metabolic requirements, and are therefore underpinned by distinct respiratory, cardiac and vascular adjustments. These act to maximise convective heat transfer within the body and evaporative heat dissipation to the surrounding environment, while preserving mean arterial and perfusion pressure and increasing O<sub>2</sub> delivery in many tissues above the metabolic demand.

### ***RESPIRATORY RESPONSES TO PASSIVE HEAT STRESS***

Elevations in core temperature >1°C induce a hyperventilatory response in humans, despite a small absolute increase in metabolic requirements and O<sub>2</sub> consumption ( $\Delta\dot{V}O_2 \sim 0.15$  l/min or 70% increase in resting metabolic rate) (10). The potential mechanisms controlling the hyperventilatory response to hyperthermia are outside the scope of this chapter, but are discussed in detail in a recent review (11). In hyperthermic but euhydrated individuals, arterial O<sub>2</sub> content is unchanged, and mixed venous O<sub>2</sub> is significantly increased due to the significant

increase in blood flow to the cutaneous and deep tissue circulations for thermoregulatory purposes (10). As a result, even at the very highest levels of heat stress, O<sub>2</sub> delivery to both thermoregulatory and metabolically-active tissues is elevated well in excess of that required to maintain the modest increases in  $\dot{V}O_2$ , and systemic and limb O<sub>2</sub> extraction is therefore markedly blunted (see Fick principle in Fig. 2). In contrast to its negligible effect on arterial O<sub>2</sub> content, however, the effect of hyperventilation on intravascular CO<sub>2</sub> levels is pronounced (12). This has potential implications for brain blood flow and cerebral O<sub>2</sub> delivery, as will be discussed later in the chapter.

### ***CARDIAC RESPONSES TO PASSIVE HEAT STRESS***

At the most fundamental physical level, the cardiovascular system can be thought of as a variation of Ohm's law, where pressure (in this case the pressure gradient between the arterial circulation and the right side of the heart) is the product of flow x resistance. Therefore, if blood pressure is to be maintained in the face of substantial reductions in peripheral resistance (due to profound vasodilation within the peripheral tissues), blood flow must also increase in a proportionate manner (Fig. 1). During passive heat stress, this is achieved through elevations in cardiac output, which increases by ~3 l/min for every 1°C increase in core body temperature (4,10,12–19), and can result in elevations in cardiac output of >5 l/min during severe whole body hyperthermia. In basic terms, these profound increases in cardiac output can be mediated by one of three mechanisms: an increase in heart rate, an increase in stroke volume, or a combination of the two.

***Heart rate:*** Heart rate increases at a rate of ~35 beats/min/°C core temperature (3,4,12,14–16,20) and is indisputably the primary determinant of cardiac output during prolonged passive heat stress. The mechanisms underlying this increase are multifactorial, with roughly equal contributions from both neural pathways (60%) and a direct effect of temperature on the

pacemaker of the heart itself (40%) (21). Around 75% of neural-mediated increases result from the combined effects of increased sympathetic nerve activity and elevated levels of circulating catecholamines, altering the sino-atrial node pacemaker current and causing an increase in heart rate of ~7 beats/min for every 1°C increase in mixed venous blood temperature.

***Stroke volume:*** In contrast to heart rate, stroke volume has been found to remain unchanged or to even slightly increase during passive heat stress (4,13,22). This finding is remarkable given that whole body hyperthermia results in a profound reduction in central blood volume (23), cardiac filling time, cardiac filling pressure, and end-diastolic volume (3,4,22,24–26); thereby decreasing the amount of blood available for ejection during each ventricular contraction. In spite of this, the preservation of stroke volume observed in the majority of studies to date suggests that compensatory adjustments to cardiac function are able to effectively counteract this challenge, either through improvements in diastolic function, systolic function, or both. Multiple studies have indicated that, despite decreases in end-diastolic volume, diastolic function may in fact be enhanced during hyperthermia (27,28), thereby protecting stroke volume in the face of the decreased filling pressures previously described (22,29). Systolic function is also enhanced, as decreases in end-systolic volume mirror the drop in end-diastolic volume (22). Although the cellular and molecular mechanisms underlying these regulatory adjustments are still not fully characterised and understood, potential explanations may involve the interaction of numerous functionally-intertwined factors: including an enhanced intrinsic myocardial contractility (22), an increased rate of myocyte relaxation (29) and improved cardiac ‘suction’ during ventricular filling as a result of an increased left ventricular untwisting velocity (22,28).

#### ***VASCULAR RESPONSES TO PASSIVE HEAT STRESS***

**Skin blood flow:** The skin – with its large surface area (1.5-2.0 m<sup>2</sup>) and abundant sweat glands (~ 2 million) – is the interface between the human body and external environment, and is therefore the most important tissue for thermoregulatory control during heat exposure. As a result, the majority of the increase in cardiac output and blood flow ‘redistribution’ from the splanchnic, renal and cerebral organs observed during prolonged passive heating is likely directed towards this vascular bed (Fig. 1). Although the exact magnitude is unknown because direct measures at whole body level has never been obtained, whole-body skin blood flow (estimated from the increase in cardiac output and decline in visceral blood flow) is routinely reported to be in the region of 7-8 l/min at the most extreme levels of resting heat stress. Early findings which led to the adoption of this figure (3,13,30), however, have rarely – if ever – been replicated, with levels closer to 4-5 l/min more commonly reported (4,10,12,14–19) (Fig. 1). The control of skin blood flow during heat stress is a complex process involving both central and local thermoregulatory networks, and can be additionally modified by numerous non-thermoregulatory feedback mechanisms such as exercise (31), circadian rhythms (32), metaboreceptors (33), and baroreceptors (34). Core temperature is often considered the major driving stimulus behind changes in skin blood flow at rest, as a 1°C increase in core temperature has been demonstrated to have a 9-fold greater effect on skin blood flow than the same increase in skin temperature. It should be noted, however, that the capacity to alter skin temperature during prolonged or severe heating is substantially greater than that possible for core temperature (~15 °C compared to ~3 °C), resulting in the potential for a much greater contribution from local temperature-sensitive mechanisms than is often appreciated. In addition, with these peripheral mechanisms able to induce a maximal cutaneous vasodilation even when core temperature remains unchanged (35–39), passive heat stress via exposure to high skin temperatures therefore has the capacity to elevate skin blood flow through predominantly local mechanisms prior to the development of increased core temperatures

(17,40). Although increases in cardiac output are sufficient to offset this profound cutaneous vasodilatory response at rest, the superimposition of additional stresses such as dehydration, orthostatic stress, or – as will be discussed subsequently – exercise, may have implications for the maintenance of perfusion pressure.

**Muscle blood flow:** The question of whether increases in skin blood flow account for the full hyperaemic response during passive heating has remained highly controversial for many years, mainly due to the difficulty in separating skin and skeletal muscle tissue perfusion *in vivo* and the variety of experimental techniques employed among studies. With early research concluding that peripheral vasodilation was confined to the skin alone (41–43), the widely-held view has been that skeletal muscle tissue is unresponsive to increases in deep tissue and blood temperature, which themselves can increase up to 5°C during local and whole-body heating (10,17,42,44,45). However, a number of later studies have since cast doubt on these findings. Firstly, substantial elevations in thigh skeletal muscle perfusion have been observed in studies using high frequency microwave diathermy to achieve intense local deep muscle heating (46–50). While it could be argued that the extreme stimulus (muscle temperature 40–45°C) employed during this technique is outside normal physiological limits, later studies involving techniques such as contrast-enhanced ultrasound (51), near infra-red spectroscopy (52), Xe<sup>133</sup> clearance (53), laser Doppler flowmetry (54), and duplex Doppler ultrasound (10,17,55) have since supported these findings using more traditional and physiologically relevant methods of passive heating. Collectively, these data – together with the observation that resting metabolic rate in heat-stressed humans is modestly elevated – indicate that skeletal muscle blood flow may make a modest yet meaningful contribution to heat-stress hyperemia, particularly when considering its large contribution to body mass. The mechanisms underlying this response remain unclear, but appear to be solely mediated at the local level and – much



like in the skin – are the net result of the augmented vasodilator activity overriding the parallel increase in vasoconstrictor activity (45,53,55–59). Multiple vascular, interstitial and intracellular signalling mechanisms sensitive to increases in temperature are likely involved in this response (56,58–62). One potential intravascular mechanism for control of tissue blood flow with alterations in local temperature could be the recently proposed temperature-dependent release of ATP from the circulating erythrocytes (45,58). This is an attractive possibility because of ATP's strong vasodilator and sympatholytic properties (45,63–66) and the direct relationship between blood temperature and plasma ATP during passive and active hyperaemic conditions (10,45,58,67).

**Visceral blood flow:** In direct contrast to the peripheral circulation, splanchnic (i.e. stomach, liver, spleen, pancreas, intestine) and renal (kidney) blood flow is substantially reduced in the hyperthermic state (Fig. 1). This phenomenon most likely occurs due to temperature-driven reflex vasoconstriction within the abdominal vascular beds, thereby contributing to the redistribution of blood flow and volume to the peripheral vasculature and aiding in the maintenance of mean arterial pressure (68). The presence of this response was first suggested in classic studies in the 1960s, where central blood volume and hepatic blood flow were estimated to decrease in some (30,68), but not all studies (3). Revisiting this question in more recent times, estimates of visceral blood flow have demonstrated decreases in the region of 30% during severe heat stress (4), while estimates of blood volume in different regions of the human torso have suggested reductions of between 14-23% in the heart, central vasculature, thorax, inferior vena cava, and liver (23). These findings, combined with the well-documented decrease in central venous (right atrial) pressure during heat stress, highlight the ability of hyperthermia to elicit selective vasoconstriction within the central vasculature, thereby aiding the redistribution of up to ~1 l/min blood flow to the periphery independently of the much larger increase in tissue blood flow and cardiac output (~5 l/min).

**Cerebral blood flow:** Passive elevations in core body temperature are associated with progressive reductions in cerebral (CBF) blood flow (~0.1 l/min or 15% fall in CBF; Fig. 1) (12,69), with these effects occurring largely as a function of a hyperventilation-induced reduction in the potent cerebral vasodilator CO<sub>2</sub> (70). Increases in body core temperature by as little as 1°C can result in changes in minute ventilation and CO<sub>2</sub> of +40% and -10%, respectively (12), while further increases >1.5°C result in marked hyperventilation and a decrease in CBF to levels ~20% below that seen in thermoneutral conditions. In contrast to blood perfusion in the brain-supplying internal carotid and vertebral arteries, blood flow in the external carotid artery, which perfuses the face and neck (12,69), increases in a linear fashion with body temperature – leading to an overall elevation in blood flow to the head of ~0.5 l/min or 48% (12) (Fig 1). This response appears to act independently of CBF (71), and is likely driven by thermoregulatory (thermosensitive) rather than blood gas or pH-related mechanisms (12,69).

**Summary:** Passive heat stress results in a decrease in peripheral resistance, an increase in cardiac output, and a selective elevation and redistribution of blood flow from the core to the extremities, head, and superficial tissues of the torso. Despite modest increases in aerobic metabolism, this response is predominantly driven by thermosensitive mechanisms, resulting in significant cardiovascular strain even at rest, alongside tissue blood flows well in excess of that required to meet additional metabolic requirements.

## **SECTION 2 – RESPIRATORY AND CARDIOVASCULAR RESPONSES TO EXERCISE HEAT STRESS**

The combination of exercise and heat stress places additional functional and regulatory demands on the cardiovascular system as both the metabolic and thermoregulatory demands of the body must be met. A long-standing question is whether the human circulation can

appropriately meet the demands for blood flow of both the active skeletal muscles and skin when exercise heat stress engaging a large muscle mass is performed (e.g. cycling, running, rowing, swimming). The answer to this question is a complex one, with evidence suggesting different circulatory responses depending on both the magnitude of hyperthermia experienced and the type of exercise performed (i.e. small vs. large muscle mass exercise, prolonged submaximal exercise vs. incremental maximal exercise, etc). While circulatory adjustments may be sufficient to support blood perfusion during small muscle mass exercise and during early whole-body exercise at low-to-moderate intensities, the superimposition of heat stress during exhaustive whole-body exercise can rapidly push the cardiovascular system to its regulatory limits, where both peripheral blood flow and cardiac output become impaired (72,73). Under these circumstances, aerobic power and endurance capacity may be hindered due to the development of severe hyperthermia alongside an attenuated O<sub>2</sub> delivery to the active skeletal muscles, heart, and brain. In this section, we will explore how global cardiovascular function, O<sub>2</sub> delivery to regional tissues and organs, and removal of heat from exercising limbs are altered by exercise heat stress at different exercise intensities. Building upon our previous findings in resting conditions, we will begin with small muscle-mass exercise in the heat (when overall metabolic demands are low), before progressing to whole-body exercise at both submaximal and maximal levels. As the focus of this chapter is on whether the cardiovascular system is capable of sustaining dual metabolic and thermoregulatory requirements of exercise in the heat, we will address these questions using data from uncompensable heat stress conditions, where skin temperature is held at very high levels (39 - 41 °C) while core temperature increases to different degrees (38.5 - 40°C). As such, we will not address data pertaining to compensable heat stress conditions; where core temperature can increase to 39 - 40°C while becoming significantly dehydrated, but skin temperature is stable around 32–35°C. Decrements in endurance capacity in these conditions are associated with the physiological and

perceptual strain caused by dehydration and core hyperthermia, which are discussed elsewhere (74).

### ***RESPIRATORY RESPONSES TO EXERCISE HEAT STRESS***

Oxygen transport from the atmospheric air to the skeletal muscle mitochondria (where the majority of ATP and heat are produced during exercise (75)) is a major determinant of aerobic power and endurance capacity, regardless of environmental conditions. As the lungs are the first potential site limiting oxygen transport through their impact on alveolar O<sub>2</sub> diffusion and – according to the Fick principle – arterial O<sub>2</sub> content, we will briefly discuss below whether or not respiratory responses may limit aerobic exercise capacity in the heat.

***Submaximal exercise:*** Similar to observations during passive heat stress, prolonged submaximal exercise in the heat is accompanied by a ventilatory response higher than that required to meet metabolic demand (76–78). This hyperventilation is characterised by an increase in breath frequency rather than tidal volume, and appears dependent solely on the rate of rise in core temperature, as skin temperature plays a negligible role (78).

***Maximal exercise:*** Minute ventilation is also elevated during the submaximal stages of incremental exercise in the heat (76), before peaking at similar values to exercise in control conditions at maximum exercise intensities (76,79). In contrast to prolonged exercise, however, the ventilatory response during graded exercise is not solely dependent on thermal stimuli, as neural, metabolic and reflex mechanisms may all play a role (80). Regardless of the intensity of the exercise performed or the mechanisms involved, however, O<sub>2</sub> content is either unaffected or elevated even at the very highest levels of hyperthermia and/or exercise intensity, suggesting that decrements in O<sub>2</sub> transport and aerobic capacity during strenuous exercise in the heat do not arise from direct respiratory limitations negatively impacting blood O<sub>2</sub> content. In contrast,

reductions in arterial CO<sub>2</sub> due to a hyperthermia-induced hyperventilatory response may have implications for the control of CBF, as will be discussed later in the chapter.

### ***CARDIAC AND PERIPHERAL SKELETAL MUSCLE, SKIN, AND VISCERAL RESPONSES TO EXERCISE HEAT STRESS***

Oxygen transport via the systemic circulation (i.e. convective O<sub>2</sub> delivery = blood flow x arterial O<sub>2</sub> content) is the next potential limiting step in oxygen utilization by tissues and organs. In the following sections, we will review the systemic, muscle, skin, visceral and cerebral vascular responses and their consequences on systemic and regional O<sub>2</sub> utilization with emphasis on the influence of exercise type and intensity.

***Submaximal exercise:*** Studies utilising small muscle-mass exercise (e.g. single-leg knee-extensor exercise) demonstrate an elevation in both leg blood flow and cardiac output during exercise heat stress – suggesting an additive effect of metabolic and thermoregulatory blood flow requirements when whole-body physiological demand is very low (power output 10 to 50 W; Fig. 4). Even at these low absolute exercise intensities, however, this effect is lower than would be expected given the magnitude of hyperemia observed when heat stress and exercise are studied in isolation. As an example, while severe passive hyperthermia results in elevations in leg blood flow and cardiac output of ~1 l/min and ~5 l/min, respectively, the superimposition of the same thermal stimulus onto single-leg knee-extensor exercise in the same individuals results in increases of only ~0.5 l/min and ~3 l/min – an attenuation of 40-50% of the response seen at rest (10,55,81). When a larger muscle mass is engaged (e.g. cycling), the hyperthermia-induced augmentation in exercising limb blood flow disappears altogether (Fig 4) (82–85), suggesting that the much greater metabolic and thermoregulatory effects of whole-body exercise on exercising leg blood flow (~16-19 l/min at peak exercise) cancel out the independent influence of hyperthermia observed during passive heating or small muscle mass

exercise (Figs. 1 and 4). This response is likely due in part to an attenuation in the skin circulation, as reduced cutaneous vasodilator activity during exercise has been shown to sharply curtail skin blood flow (compared to resting values) when core temperature increases  $>38^{\circ}\text{C}$  (86). Although restrictions in skin blood flow may be expected to compromise thermoregulation, a number of factors likely help to offset this apparent insufficient vasodilatory response. Firstly, exercise reduces the core temperature at which sweating is initiated, thereby facilitating heat loss at an earlier stage (87). Secondly, active muscle blood flow plays a key role in thermoregulation during exercise, aiding in the convective transfer of heat from the interior of the exercising muscles to the overlying skin. This heat transfer pathway can account for the dissipation of  $>60\%$  of the leg energy turnover during both prolonged (88) and incremental exercise (67), and thus may explain why exercise heat stress has no additive effects on locomotor limb blood flow during whole body exercise. It may also help to explain why cardiac output only shows small increases (1-3 l/min) compared to passive heat stress or exercise in control conditions (10,82–85), as increases in exercising limb blood flow account for the majority of the increase in cardiac output during constant load and incremental exercise (6,7,72,89,90). Despite these haemodynamic adjustments, progressive increases in core temperature will only be delayed, not prevented, during uncompensable heat stress conditions, and whole body hyperthermia therefore becomes a critical factor in the development of fatigue during prolonged exercise in hot environments (91).

**Maximal exercise:** The combination of heat stress and whole-body exercise at near maximal intensities (e.g. 80-100%  $\dot{V}\text{O}_{2\text{max}}$ ) poses one of the greatest challenges to cardiovascular control. Severe hyperthermia results in a quicker onset of fatigue due to a more rapid reduction in mean arterial blood pressure, cardiac output, and blood flow to the working skeletal muscles of the locomotor limbs compared to exercise at temperate ambient temperatures (72,73) (Fig 5). This fall in cardiac output occurs due to a decline in stroke volume, as heart rate is higher

over time and attains similar maximal values compared to temperate conditions (72,73,85,92). Similar to passive heat stress, incremental exercise results in selective reductions in visceral blood flow (up to 20-40% of resting values). The impact of exercise on visceral vasoconstriction appears stronger than that observed during graded passive heat stress (93,94), and as a result, the addition of heat stress onto exercise does not seem to change the rate of decline in visceral blood flow as exercise intensity increases. It is therefore unlikely that redistribution of blood flow from splanchnic and renal organs contributes significantly to the peripheral blood flow responses during exercise heat stress. Ultimately, the fall in exercising leg blood flow appears to be associated with reductions in perfusion pressure secondary to the fall in cardiac output, rather than an active vasoconstriction process in the exercising limb itself, as limb vascular conductance is largely stable throughout exercise (85). Although this accelerated decline in flow is often portrayed as an inability of the heart to supply both skin and muscle circulations for metabolic and thermoregulatory purposes (8), two major observations argue against a role of skin hyperperfusion *per se* as the limiting factor affecting maximal endurance capacity in hot environments. Firstly, stroke volume is reduced to a greater extent during maximal exercise in temperate conditions, compared to the same exercise performed in the heat (72). Secondly, despite decreases in both stroke volume and cardiac output immediately prior to exhaustion in a hot environment, their absolute values remain elevated compared to those observed in temperate conditions (72). Instead, a shortened cardiac cycle – perpetuated by hyperthermia-induced increases in heart rate – likely compounds the fall in cardiac filling and end-diastolic volume (22,72,95). In these non-steady state physiological conditions, maximal heart rate is attained at a faster rate than in comparable exercise in a temperate environment and, immediately prior to exhaustion, is accompanied by falls in stroke volume, cardiac output, perfusion pressure, leg blood flow, and eventually, O<sub>2</sub> delivery to the working skeletal muscle (72,91) (Fig. 5). This reduction in convective O<sub>2</sub>

delivery reduces limb aerobic metabolism, because maximal functional O<sub>2</sub> extraction of the exercising limb tissues (~90-95%) is achieved in the early stages of severe-intensity exercise (45,72). Ultimately, these hemodynamic alterations compromise active limb and systemic oxygen uptake and, at least in part, contribute to the reduced aerobic power and endurance capacity when exercising in a hyperthermic state (Fig 6).

### ***CEREBROVASCULAR RESPONSES TO EXERCISE HEAT STRESS***

The cerebral vascular bed is small in comparison to other peripheral tissues, and is strongly regulated by autoregulation and arterial CO<sub>2</sub> levels. As such, its response to both heat stress and exercise is distinct to that observed in other peripheral vascular beds, and may independently contribute to impaired exercise capacity. Dynamic exercise requires the activation of motor and cardiorespiratory neurons, and is generally thought to necessitate increases in CBF and O<sub>2</sub> supply in order to meet the presumed greater 'brain metabolic activity' (96,97). As a result, any factors compromising CBF may potentially compromise motor neurone activation and exercise capacity.

***Submaximal exercise:*** At the onset of prolonged submaximal exercise (<60%  $\dot{V}O_{2max}$ ), CBF increases by ~20% above baseline values, irrespective of the ambient conditions (76,98–101). If submaximal exercise is continued in a cool environment, CBF remains stable as long as the rise in internal body temperature and associated ventilatory and blood CO<sub>2</sub> responses are prevented (76,92,102). However, the development of hyperthermia during exercise heat stress results in a relative hyperventilation (discussed previously), an accompanying reduction in the potent cerebral vasodilator CO<sub>2</sub> – even at submaximal exercise intensities – and ultimately a progressive reduction of CBF back towards resting baseline values (76,101,102).

***Maximal exercise:*** When incremental exercise is performed to near-maximal levels in temperate conditions, the augmented minute ventilation observed during the latter stages (i.e.



above the ventilatory threshold) also results in a fall in CBF towards baseline values (98,99,103). When exercising in a hyperthermic state, this fall in CBF occurs both at a lower absolute work rate during incremental protocols (85,100) and sooner during severe constant-load exercise (73), suggesting that augmented core temperature plays a role in the differing CBF dynamics. Similar to passive heat stress, blood flow to other tissues across the head remains high, with external carotid artery blood flow shown to more than double from resting values (up to ~700 ml/min) (73,100,101,104). This substantial increase in blood flow is related to the rise in body temperature; which is perhaps unsurprising as the external carotid arteries in part perfuse the cutaneous circulation of the face and neck. Whilst this association has led some to hypothesise that the rise in external carotid artery blood flow may 'steal' blood destined for the cerebral vasculature (99), this is unlikely as changes in blood flow in these different tissues appear unrelated (69). Despite the marked fall in CBF, however, global aerobic metabolism of the brain does not appear to be compromised at any level of exercise intensity due to compensatory elevations in brain O<sub>2</sub> extraction (73,100). Thus, reduced brain oxygen consumption is unlikely to contribute to the fall in aerobic power and endurance capacity during exercise heat stress (Fig 6).

### ***SUMMARY***

Exercise heat stress can place substantially greater functional and regulatory demands on the cardiovascular system compared to heat stress alone. Although the magnitude of cardiovascular response differs depending on the overall metabolic demand, the independent circulatory effects of heat stress and exercise are not additive. On the contrary, exercising limb blood flow during moderate to heavy intensity whole body exercise is actually not different from that seen in normal conditions. The superimposition of heat stress onto maximal whole-body exercise, however, more rapidly pushes the cardiovascular system to its regulatory limits, where

systemic and regional tissue and organ blood perfusion becomes restricted. While some organs can cope better with the decline in convective O<sub>2</sub> supply (e.g. the brain), a compromised active skeletal muscle O<sub>2</sub> metabolism is a major factor explaining why aerobic capacity is reduced in the heat-stressed human.

## References

1. Crandall CG, González-Alonso J. Cardiovascular function in the heat-stressed human. *Acta Physiol.* 2010;199(4):407–23.
2. Tipton CM, Medicine AC of S. ACSM's advanced exercise physiology. Lippincott Williams & Wilkins; 2006.
3. Rowell LB, Murray JA, Brengelmann GL, Kraning 2nd KK. Human cardiovascular adjustments to rapid changes in skin temperature during exercise. *Circ Res.* 1969 May;24(5):711–24.
4. Minson CT, Wladkowski SL, Cardell AF, Pawelczyk JA, Kenney WL. Age alters the cardiovascular response to direct passive heating. *J Appl Physiol.* 1998;84(4):1323–32.
5. Andersen P, Saltin B. Maximal perfusion of skeletal muscle in man. *J Physiol.* 1985;366(1):233–49.
6. Mortensen SP, Dawson EA, Yoshiga CC, Dalsgaard MK, Damsgaard R, Secher NH, et al. Limitations to systemic and locomotor limb muscle oxygen delivery and uptake during maximal exercise in humans. *J Physiol.* 2005;566(1):273–85.
7. Mortensen SP, Damsgaard R, Dawson EA, Secher NH, González-Alonso J. Restrictions in systemic and locomotor skeletal muscle perfusion, oxygen supply and VO<sub>2</sub> during high-intensity whole-body exercise in humans. *J Physiol.* 2008;586(10):2621–35.
8. Rowell LB. Human cardiovascular adjustments to exercise and thermal stress. *Physiol rev.* 1974;54(1):75–159.
9. Kenney WL, Stanhewicz AE, Bruning RS, Alexander LM. Blood pressure regulation III: what happens when one system must serve two masters: temperature and pressure regulation? *Eur J Appl Physiol.* 2014;114(3):467–79.
10. Pearson J, Low DA, Stöhr E, Kalsi K, Ali L, Barker H, et al. Hemodynamic responses

- to heat stress in the resting and exercising human leg: insight into the effect of temperature on skeletal muscle blood flow. *AJP Regul Integr Comp Physiol*. 2011;300(3):R663–73.
11. White MD. Components and mechanisms of thermal hyperpnea. 2006;101(2):655–63.
  12. Ogoh S, Sato K, Okazaki K, Miyamoto T, Hirasawa A, Morimoto K, et al. Blood flow distribution during heat stress: cerebral and systemic blood flow. *J Cereb Blood Flow Metab*. 2013;33(12):1915–20.
  13. Rowell LB, Brengelmann GL, Murray JA. Cardiovascular responses to sustained high skin temperature in resting man. *J Appl Physiol*. 1969;27(5):673–80.
  14. Bonde-Petersen F, Schultz-Pedersen L, Dragsted N. Peripheral and central blood flow in man during cold, thermoneutral, and hot water immersion. *Aviat Space Environ Med*. 1992;63(5):346–50.
  15. Niimi Y, Matsukawa T, Sugiyama Y, Shamsuzzaman ASM, Ito H, Sobue G, et al. Effect of heat stress on muscle sympathetic nerve activity in humans. *J Auton Nerv Syst*. 1997;63(1):61–7.
  16. Ganio MS, Overgaard M, Seifert T, Secher NH, Johansson PI, Meyer MAS, et al. Effect of heat stress on cardiac output and systemic vascular conductance during simulated hemorrhage to presyncope in young men. *AJP Hear Circ Physiol*. 2012;302(8):H1756–61.
  17. Chiesa ST, Trangmar SJ, González-Alonso J. Temperature and blood flow distribution in the human leg during passive heat stress. *J Appl Physiol*. 2016 May 1;120(9):1047–58.
  18. Peters JK, Nishiyasu T, Mack GW. Reflex control of the cutaneous circulation during passive body core heating in humans. *J Appl Physiol*. 2000;88(5):1756–64.
  19. Nelson MD, Altamirano-Diaz LA, Petersen SR, DeLorey DS, Stickland MK,

- Thompson RB, et al. Left ventricular systolic and diastolic function during tilt-table positioning and passive heat stress in humans. *Am J Physiol Circ Physiol*. 2011;301(2):H599-608.
20. Wyss CR, Brengelmann GL, Johnson JM, Rowell LB, Silverstein D. Altered control of skin blood flow at high skin and core temperatures. *J Appl Physiol*. 1975;38(5):839–45.
  21. Gorman AJ, Proppe DW. Mechanisms producing tachycardia in conscious baboons during environmental heat stress. *J Appl Physiol*. 56:441–6.
  22. Stöhr EJ, González-Alonso J, Pearson J, Low DA, Ali L, Barker H, et al. Effects of graded heat stress on global left ventricular function and twist mechanics at rest and during exercise in healthy humans. *Exp Physiol*. 2011;96(2):114–24.
  23. Crandall CG, Wilson TE, Marving J, Vogelsang TW, Kjaer A, Hesse B, et al. Effects of passive heating on central blood volume and ventricular dimensions in humans. *J Physiol*. 2008;586(1):293–301.
  24. Keller DM, Low DA, Wingo JE, Brothers RM, Hastings J, Davis SL, et al. Acute volume expansion preserves orthostatic tolerance during whole-body heat stress in humans. *J Physiol*. 2009;587(5):1131–9.
  25. Wilson TE, Brothers RM, Tollund C, Dawson EA, Nissen P, Yoshiga CC, et al. Effect of thermal stress on Frank-Starling relations in humans. *J Physiol*. 2009;587(13):3383–92.
  26. Wilson TE, Tollund C, Yoshiga CC, Dawson EA, Nissen P, Secher NH, et al. Effects of heat and cold stress on central vascular pressure relationships during orthostasis in humans. *J Physiol*. 2007;585(1):279–85.
  27. Brothers RM, Bhella PS, Shibata S, Wingo JE, Levine BD, Crandall CG. Cardiac systolic and diastolic function during whole body heat stress. *Am J Physiol Circ*

- Physiol. 2009;296(4):H1150-6.
28. Nelson MD, Haykowsky MJ, Petersen SR, DeLorey DS, Cheng-Baron J, Thompson RB. Increased left ventricular twist, untwisting rates, and suction maintain global diastolic function during passive heat stress in humans. *Am J Physiol Circ Physiol.* 2010;298(3):H930–7.
  29. Brothers RM, Bhella PS, Shibata S, Wingo JE, Levine BD, Crandall CG. Cardiac systolic and diastolic function during whole body heat stress. *Am J Physiol Heart Circ Physiol.* 2009;296(4):H1150-6.
  30. Rowell LB, Brengelmann GL, Blackmon JR, Murray JA. Redistribution of blood flow during sustained high skin temperature in resting man. *J Appl Physiol.* 1970;28(4):415–20.
  31. Taylor WF, Johnson JM, Kosiba WA, Kwan CM. Graded cutaneous vascular responses to dynamic leg exercise. *J Appl Physiol.* 1988;64(5):1803–9.
  32. Stephenson LA, Wenger CB, O'Donovan BH, Nadel ER. Circadian rhythm in sweating and cutaneous blood flow. *Am J Physiol.* 1984;246(3):R321-4.
  33. Crandall CG, Stephens DP, Johnson JM. Muscle metaboreceptor modulation of cutaneous active vasodilation. *Med Sci Sports Exerc.* 1998;30(4):490–6.
  34. Jackson DN, Kenny GP. Upright LBPP application attenuates elevated postexercise resting thresholds for cutaneous vasodilation and sweating. *J Appl Physiol.* 2003;95(1):121–8.
  35. Kellogg Jr DL, Liu Y, Kosiba IF, O'Donnell D. Role of nitric oxide in the vascular effects of local warming of the skin in humans. *J Appl Physiol.* 1999;86(4):1185–90.
  36. Kellogg DL, Zhao JL, Wu Y. Endothelial nitric oxide synthase control mechanisms in the cutaneous vasculature of humans in vivo. *Am J Physiol Heart Circ Physiol.* 2008;295(1):H123–9.

37. Johnson JM, Kellogg Jr. DL. Local thermal control of the human cutaneous circulation. *J Appl Physiol.* 2010;109(4):1229–38.
38. Minson CT, Berry LT, Joyner MJ. Nitric oxide and neurally mediated regulation of skin blood flow during local heating. *J Appl Physiol.* 2001;91(4):1619–26.
39. Black MA, Green DJ, Cable NT. Exercise prevents age-related decline in nitric-oxide-mediated vasodilator function in cutaneous microvessels. *J Physiol.* 2008;586(14):3511–24.
40. Taylor WF, Johnson JM, O’Leary D, Park MK. Effect of high local temperature on reflex cutaneous vasodilation. *J Appl Physiol.* 1984;57(1):191–6.
41. Johnson JM, Brengelmann GL, Rowell LB. Interactions between local and reflex influences on human forearm skin blood flow. *J Appl Physiol.* 1976;41(6):826–31.
42. Detry JM, Brengelmann GL, Rowell LB, Wyss C. Skin and muscle components of forearm blood flow in directly heated resting man. *J Appl Physiol.* 1972;32(4):506–11.
43. Hales JRS, Rowell LB, King RB. Regional distribution of blood flow in awake heat-stressed baboons. *Am J Physiol.* 1979;237(6):H705-12.
44. Abramson DI, Kahn A, Tuck Jr S, Turman GA, Rejal H, Fleischer CJ. Relationship between a range of tissue temperature and local oxygen uptake in the human forearm. I. Changes observed under resting conditions. *J Clin Invest.* 1958;37(7):1031–8.
45. Kalsi KK, Chiesa ST, Trangmar SJ, Ali L, Lotlikar MD, González-Alonso J. Mechanisms for the control of local tissue blood flow during thermal interventions: influence of temperature-dependent ATP release from human blood and endothelial cells. *Exp Physiol.* 2017;102(2):228–44.
46. Wyper DJ, McNiven DR. The effect of microwave therapy upon muscle blood flow in man. *Br J Sports Med.* 1976;10(1):19–21.
47. Lehmann JF, Guy AW, Stonebridge JB, DeLateur BJ. Evaluation of a therapeutic

- direct-contact 915-MHz microwave applicator for effective deep-tissue heating in humans. *Microw Theory Tech.* 1978;26(8):556–63.
48. Sekins KM, Lehmann JF, Esselman P, Dundore D, Emery AF, DeLateur BJ, et al. Local muscle blood flow and temperature responses to 915MHz diathermy as simultaneously measured and numerically predicted. *Arch Phys Med Rehabil.* 1984;65(1):1–7.
  49. Song CW. Effect of local hyperthermia on blood flow and microenvironment: a review. *Cancer Res.* 1984;44(S10):4721.
  50. Giombini A, Giovannini V, Di Cesare A, Pacetti P, Ichinoseki-Sekine N, Shiraishi M, et al. Hyperthermia induced by microwave diathermy in the management of muscle and tendon injuries. *Br Med Bull.* 2007;83(1):379–96.
  51. Akyürekli D, Gerig LH, Raaphorst GP. Changes in muscle blood flow distribution during hyperthermia. *Int J Hyperth.* 1997;13(5):481–96.
  52. Okada K, Yamaguchi T, Minowa K, Inoue N. The influence of hot pack therapy on the blood flow in masseter muscles. *J Oral Rehabil.* 2005;32(7):480–6.
  53. Keller DM, Sander M, Stallknecht B, Crandall CG.  $\alpha$ -Adrenergic vasoconstrictor responsiveness is preserved in the heated human leg. *J Physiol.* 2010;588(19):3799–808.
  54. Binzoni T, Tchernin D, Richiardi J, Van De Ville D, Hyacinthe J-N. Haemodynamic responses to temperature changes of human skeletal muscle studied by laser-Doppler flowmetry. *Physiol Meas.* 2012;33(7).
  55. Chiesa ST, Trangmar SJ, Kalsi KK, Rakobowchuk M, Banker DS, Lotlikar MD, et al. Local temperature-sensitive mechanisms are important mediators of limb tissue hyperemia in the heat-stressed human during rest and small muscle mass exercise. *Am J Physiol Circ Physiol.* 2015;309:H369-380.



56. Heinonen I, Brothers RM, Kemppainen J, Knuuti J, Kalliokoski KK, Crandall CG. Local heating, but not indirect whole body heating, increases human skeletal muscle blood flow. *J Appl Physiol*. 2011;111(3):818–24.
57. Ives SJ, Andtbacka RH, Kwon SH, Shiu YT, Ruan T, Noyes RD, et al. Heat and alpha1-adrenergic responsiveness in human skeletal muscle feed arteries: the role of nitric oxide. *J Appl Physiol*. 2012;113(11):1690–8.
58. Kalsi KK, González-Alonso J. Temperature-dependent release of ATP from human erythrocytes: Mechanism for the control of local tissue perfusion. *Exp Physiol*. 2012;97(3):419–32.
59. Ives SJ, Andtbacka RHI, Noyes RD, McDaniel J, Amann M, Witman MAH, et al. Human skeletal muscle feed arteries studied in vitro: the effect of temperature on  $\alpha$ 1-adrenergic responsiveness. *Exp Physiol*. 2011;96(9):907–18.
60. Heinonen I, Wendelin-Saarenhovi M, Kaskinoro K, Knuuti J, Scheinin M, Kalliokoski KK. Inhibition of alpha-adrenergic tone disturbs the distribution of blood flow in the exercising human limb. *Am J Physiol Circ Physiol*. 2013;305(2):H163-72.
61. Kluess HA, Buckwalter JB, Hamann JJ, Clifford PS. Elevated temperature decreases sensitivity of P2X purinergic receptors in skeletal muscle arteries. *J Appl Physiol*. 2005 Sep;99(3):995–8.
62. Fujii N, McGinn R, Halili L, Singh MS, Kondo N, Kenny GP. Cutaneous vascular and sweating responses to intradermal administration of ATP: a role for nitric oxide synthase and cyclooxygenase? *J Physiol*. 2015 Jun 1;593(11):2515–25.
63. González-Alonso J, Olsen DB, Saltin B. Erythrocyte and the regulation of human skeletal muscle blood flow and oxygen delivery role of circulating ATP. *Circ Res*. 2002;91(11):1046–55.
64. González-Alonso J, Mortensen SP, Jeppesen TD, Ali L, Barker H, Damsgaard R, et al.

- Haemodynamic responses to exercise, ATP infusion and thigh compression in humans: insight into the role of muscle mechanisms on cardiovascular function. *J Physiol.* 2008;586(9):2405–17.
65. Rosenmeier JB, Hansen J, Gonzalez-Alonso J. Circulating ATP-induced vasodilatation overrides sympathetic vasoconstrictor activity in human skeletal muscle. *J Physiol.* 2004;558(1):351–65.
66. Rosenmeier JB, Yegutkin GG, González-Alonso J. Activation of ATP/UTP-selective receptors increases blood flow and blunts sympathetic vasoconstriction in human skeletal muscle. *J Physiol.* 2008;586(20):4993–5002.
67. González-Alonso J, Calbet JAL, Boushel R, Helge JW, Søndergaard H, Munch-Andersen T, et al. Blood temperature and perfusion to exercising and non-exercising human limbs. *Exp Physiol.* 2015;100(10):1118–31.
68. Rowell LB, Detry JR, Profant GR, Wyss C. Splanchnic vasoconstriction in hyperthermic man--role of falling blood pressure. *J Appl Physiol.* 1971;31(6):864–9.
69. Bain AR, Smith KJ, Lewis NC, Foster GE, Wildfong KW, Willie CK, et al. Regional changes in brain blood flow during severe passive hyperthermia: effects of PaCO<sub>2</sub> and extracranial blood flow. *J Appl Physiol.* 2013;115(5):653–9.
70. Willie CK, Tzeng Y-C, Fisher JA, Ainslie PN. Integrative regulation of human brain blood flow. *J Physiol.* 2014;592(5):841–59.
71. Miyazawa T, Horiuchi M, Ichikawa D, Subudhi AW, Sugawara J, Ogoh S. Face cooling with mist water increases cerebral blood flow during exercise: Effect of changes in facial skin blood flow. *Front Physiol.* 2012;3:308.
72. González-Alonso J, Calbet JAL. Reductions in systemic and skeletal muscle blood flow and oxygen delivery limit maximal aerobic capacity in humans. *Circulation.* 2003;107(6):824–30.

73. González-Alonso J, Dalsgaard MK, Osada T, Volianitis S, Dawson EA, Yoshiga CC, et al. Brain and central haemodynamics and oxygenation during maximal exercise in humans. *J Physiol*. 2004 May 15;557(1).
74. Trangmar SJ, González-Alonso J. New Insights Into the Impact of Dehydration on Blood Flow and Metabolism During Exercise. *Exerc Sport Sci Rev*. 2017;45(3):146–53.
75. González-Alonso J, Quistorff B, Krstrup P, Bangsbo J, Saltin B. Heat production in human skeletal muscle at the onset of intense dynamic exercise. *J Physiol*. 2000;524(2):603–15.
76. Nybo L, Nielsen B. Middle cerebral artery blood velocity is reduced with hyperthermia during prolonged exercise in humans. *J Physiol*. 2001;534(1):279–86.
77. Fujii N, Honda Y, Hayashi K, Soya H, Kondo N, Nishiyasu T. Comparison of hyperthermic hyperpnea elicited during rest and submaximal, moderate-intensity exercise. *J Appl Physiol*. 2008;104(4):998–1005.
78. Hayashi K, Honda Y, Ogawa T, Kondo N, Nishiyasu T. Relationship between ventilatory response and body temperature during prolonged submaximal exercise. *J Appl Physiol*. 2006;100(2):414–20.
79. Keiser S, Flück D, Stravs A, Hüppin F, Lundby C. Restoring heat stress-associated reduction in middle cerebral artery velocity does not reduce fatigue in the heat. *Scand J Med Sci Sport*. 2015;25(1):145–53.
80. Forster H V., Haouzi P, Dempsey JA. Control of breathing during exercise. *Compr Physiol*. 2012;2(1):743–77.
81. Ferguson RA, Krstrup P, Kjaer M, Mohr M, Ball D, Bangsbo J. Effect of temperature on skeletal muscle energy turnover during dynamic knee-extensor exercise in humans. *J Appl Physiol*. 2006;101(1):47–52.

82. Nielsen B, Savard G, Richter EA, Hargreaves M, Saltin B. Muscle blood flow and muscle metabolism during exercise and heat stress. *J Appl Physiol.* 1990;69(3):1040–6.
83. Nielsen B, Hales JR, Strange S, Christensen NJ, Warberg J, Saltin B. Human circulatory and thermoregulatory adaptations with heat acclimation and exercise in a hot, dry environment. 1993 Jan;460(1).
84. Nielsen B, Strange S, Christensen NJ, Warberg J, Saltin B. Acute and adaptive responses in humans to exercise in a warm, humid environment. *Pflugers Arch Eur J Physiol.* 1997;434(1):49–56.
85. Trangmar SJ, Chiesa ST, Kalsi KK, Secher NH, Gonzalez-Alonso J. Whole body hyperthermia, but not skin hyperthermia, accelerates brain and locomotor limb circulatory strain and impairs exercise capacity in humans. *Physiol Rep.* 2017;5(1):e13108.
86. Kellogg DL, Johnson JM, Kenney WL, Pergola PE, Kosiba WA. Mechanisms of control of skin blood flow during prolonged exercise in humans. *Am J Physiol Circ Physiol.* 1993;265(2):562–8.
87. Shibasaki M, Wilson TE, Crandall CG. Neural control and mechanisms of eccrine sweating during heat stress and exercise. *J Appl Physiol.* 2006;100:1692–701.
88. González-Alonso J, Calbet JA, Nielsen B. Metabolic and thermodynamic responses to dehydration-induced reductions in muscle blood flow in exercising humans. *J Physiol.* 1999;520:577–89.
89. Calbet JA, Gonzalez-Alonso J, Helge JW, Sondergaard H, Munch-Andersen T, Boushel R, et al. Cardiac output and leg and arm blood flow during incremental exercise to exhaustion on the cycle ergometer. *J Appl Physiol.* 2007;103(3):969–78.
90. González-Alonso J, Mortensen SP, Jeppesen TD, Ali L, Barker H, Damsgaard R, et al.

- Haemodynamic responses to exercise, ATP infusion and thigh compression in humans: insight into the role of muscle mechanisms on cardiovascular function. *J Physiol.* 2008;586(9):2405–17.
91. Gonzalez-Alonso J, Teller C, Andersen SL, Jensen FB, Hyldig T, Nielsen B. Influence of body temperature on the development of fatigue during prolonged exercise in the heat. *J Appl Physiol.* 1999;86(3):1032–9.
  92. Nybo L, Møller K, Volianitis S, Nielsen B, Secher NH, Moller K, et al. Effects of hyperthermia on cerebral blood flow and metabolism during prolonged exercise in humans. *J Appl Physiol.* 2002;93(1):58–64.
  93. Rowell LB. *Human circulation : regulation during physical stress.* Oxford University Press; 1986. 416 p.
  94. Rowell LB. *Cardiovascular Adjustments to Thermal Stress.* Comprehensive Physiology. Hoboken, NJ, USA: John Wiley & Sons, Inc.; 2011.
  95. Trinity JD, Pahnke MD, Lee JF, Coyle EF. Interaction of hyperthermia and heart rate on stroke. *J Appl Physiol.* 2011;111(3):891–7.
  96. Buxton RB, Frank LR. A model for the coupling between cerebral blood flow and oxygen metabolism during neural stimulation. *J Cereb Blood Flow Metab.* 1997;17(1):64–72.
  97. Secher NH, Seifert T, Van Lieshout JJ. Cerebral blood flow and metabolism during exercise: implications for fatigue. *J Appl Physiol.* 2008;104(1):306–14.
  98. Hellstrom G, Fischer-Colbrie W, Wahlgren NG, Jogestrand T. Carotid artery blood flow and middle cerebral artery blood flow velocity during physical exercise. *J Appl Physiol.* 1996;81(1):413–8.
  99. Sato K, Ogoh S, Hirasawa A, Oue A, Sadamoto T. The distribution of blood flow in the carotid and vertebral arteries during dynamic exercise in humans. *J Physiol.*

- 2011;589(11):2847–56.
100. Trangmar SJ, Chiesa ST, Stock CG, Kalsi KK, Secher NH, González-Alonso J. Dehydration affects cerebral blood flow but not its metabolic rate for oxygen during maximal exercise in trained humans. *J Physiol*. 2014;592(14):3143–60.
  101. Trangmar SJ, Chiesa ST, Llodio I, Garcia B, Kalsi KK, Secher NH, et al. Dehydration accelerates reductions in cerebral blood flow during prolonged exercise in the heat without compromising brain metabolism. *Am J Physiol Hear Circ Physiol*. 2015;309(9):H1598--H1607.
  102. Périard JD, Racinais S. Heat stress exacerbates the reduction in middle cerebral artery blood velocity during prolonged self-paced exercise. *Scand J Med Sci Sport*. 2015;25(S1):135–44.
  103. Moraine JJ, Lamotte M, Berré J, Niset G, Leduc A, Naeijel R. Relationship of middle cerebral artery blood flow velocity to intensity during dynamic exercise in normal subjects. *Eur J Appl Physiol Occup Physiol*. 1993;67(1):35–8.
  104. Sato K, Oue A, Yoneya M, Sadamoto T, Ogoh S. Heat stress redistributes blood flow in the arteries of the brain during dynamic exercise. *J Appl Physiol*. 2016;

## FIGURE LEGENDS

**Figure 1.** Systemic and regional haemodynamic responses to progressive passive heat stress-induced hyperthermia. Data for mean arterial pressure, femoral venous pressure, cardiac output and total peripheral resistance graphs are redrawn from (10) and (22). The limbs blood flow graph is based on data reported by (10) (legs) and (45) (forearms) whereas the head and cerebral blood flow graph is from (12). Lastly, the visceral blood flow and right atrial pressure graphs are based on data from (4). The increase in blood flow in the legs, arms and head accounts for the majority (>80%) of the increase in cardiac output.

**Figure 2.** Schematic illustration of the impact of severe whole-body heat stress on physiological function according to Ohm's law and the Fick principle. Ohm's law states that perfusion pressure equals flow x resistance, with pressure being the force that drives flow and resistance the force that opposes flow. The Fick principle, in turn, determines the rate of oxygen consumption by the human body, an organ, limb or tissue. This is equal to the product of blood flow and the arterial-venous oxygen content differences. Note that blood flow is the common denominator in both equations.

$\dot{Q}$ , cardiac output; TPR, total peripheral resistance; MAP, mean arterial pressure; RAP, right atrial pressure;  $\dot{V}O_2$ , systemic oxygen consumption; a-v $O_2$  diff, arterio-mixed venous oxygen content differences; HR, heart rate; SV, stroke volume; EDV, end-diastolic volume; ESV, end-systolic volume.

**Figure 3.** Systemic and regional haemodynamic responses to combined constant load single leg knee-extensor exercise and graded heat stress. Redrawn from (10).

**Figure 4.** Leg haemodynamic responses to incremental knee-extensor exercise to volitional exhaustion and incremental cycling to voluntary exhaustion with exposure to heat stress (induced by 1 hour of whole body exposure to heat stress with a water-perfused suit prior to exercise and maintained during exercise) and control conditions. Redrawn from (55) and (85), respectively.

**Figure 5.** Cardiac output (dashed lines) and leg haemodynamic and metabolic responses (solid lines) to constant-load cycling to voluntary exhaustion with exposure to heat stress (induced by 1 h of whole body exposure to heat stress with a water-perfused suit prior to exercise and maintained during exercise) and control conditions. Redrawn from (72).

**Figure 6.** Schematic illustration of the impact of severe whole body exercise heat stress on physiological function according to Ohm's law and the Fick principle. Note that impaired aerobic capacity is associated with blunted peripheral blood flow and cardiac output and enhanced peripheral vascular resistance, preferentially affecting active skeletal muscle. Diminished venous return and filling of the heart is proposed as a primary factor reducing stroke volume, and thus cardiac output.



Figure 1.

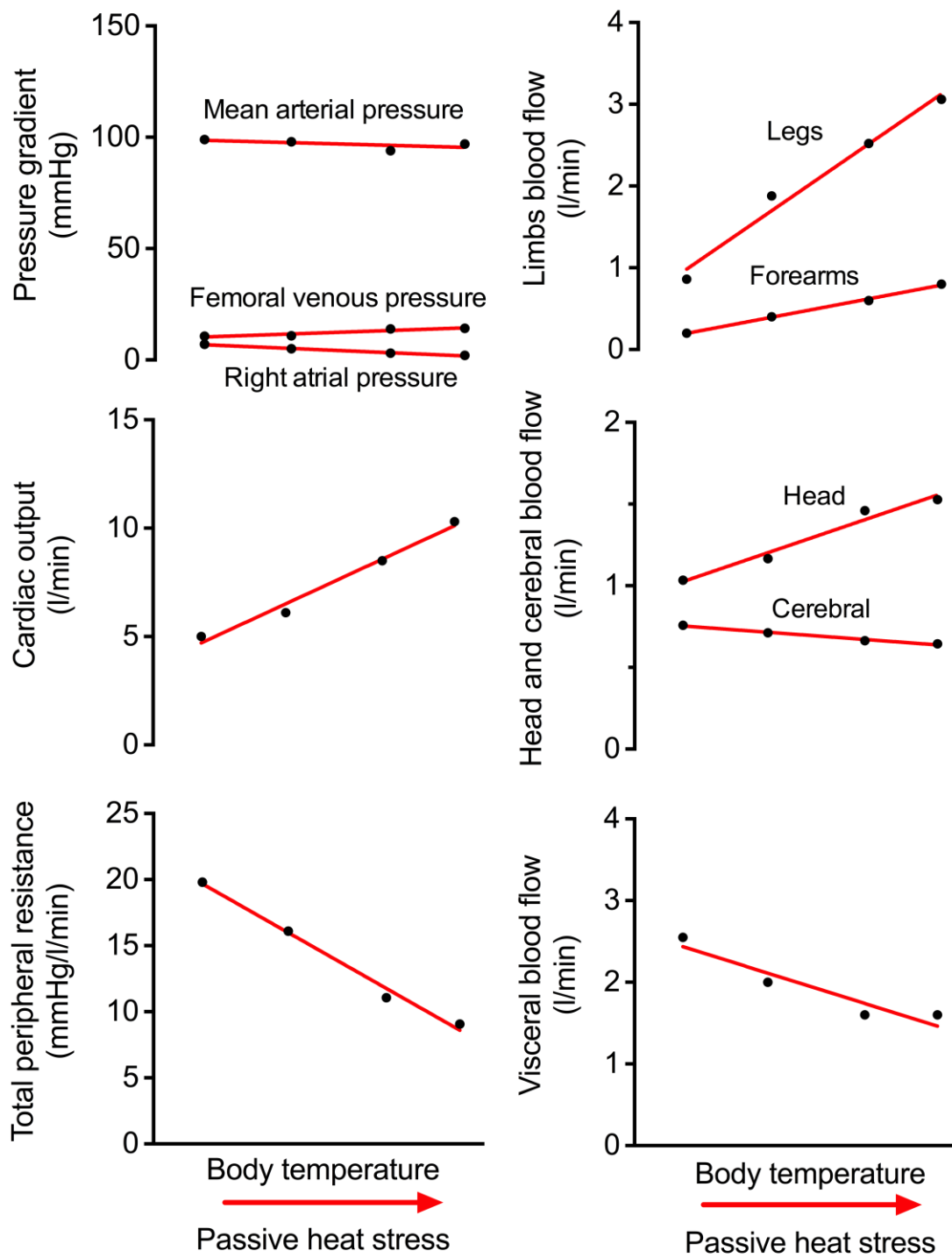
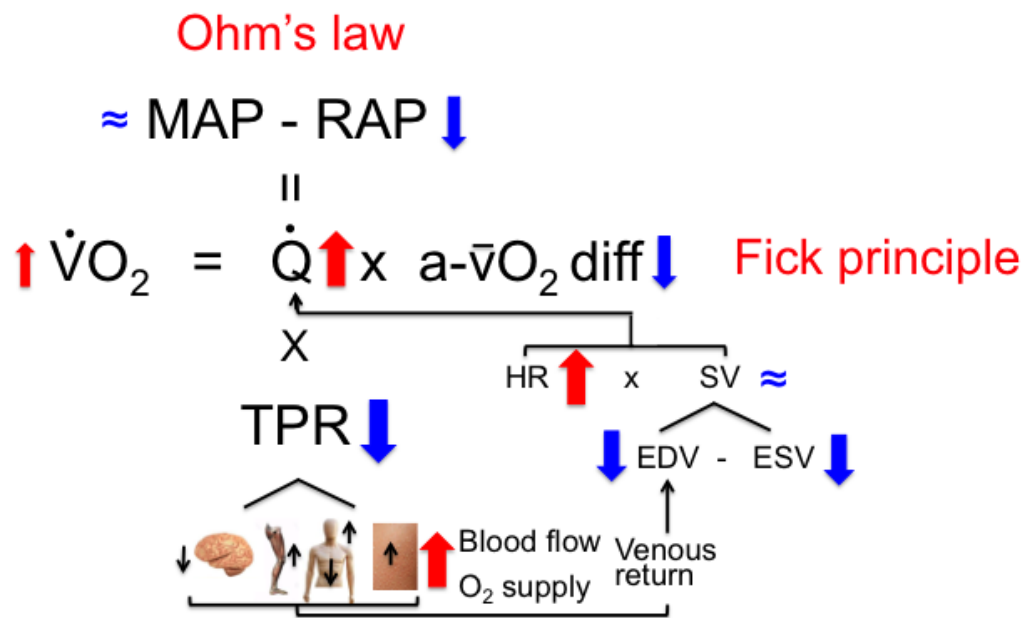
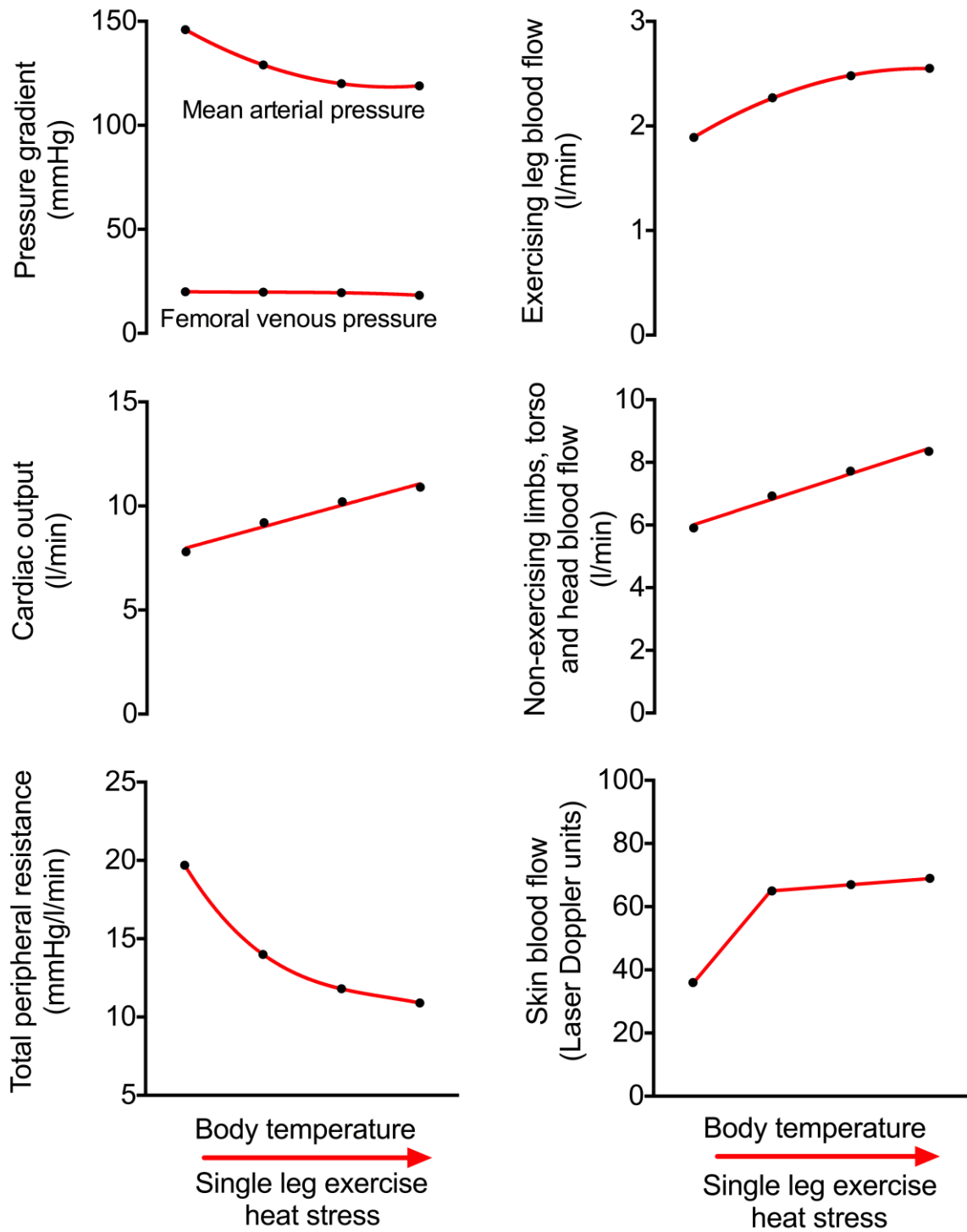


Figure 2:



**Figure 3:**



**Figure 4:**

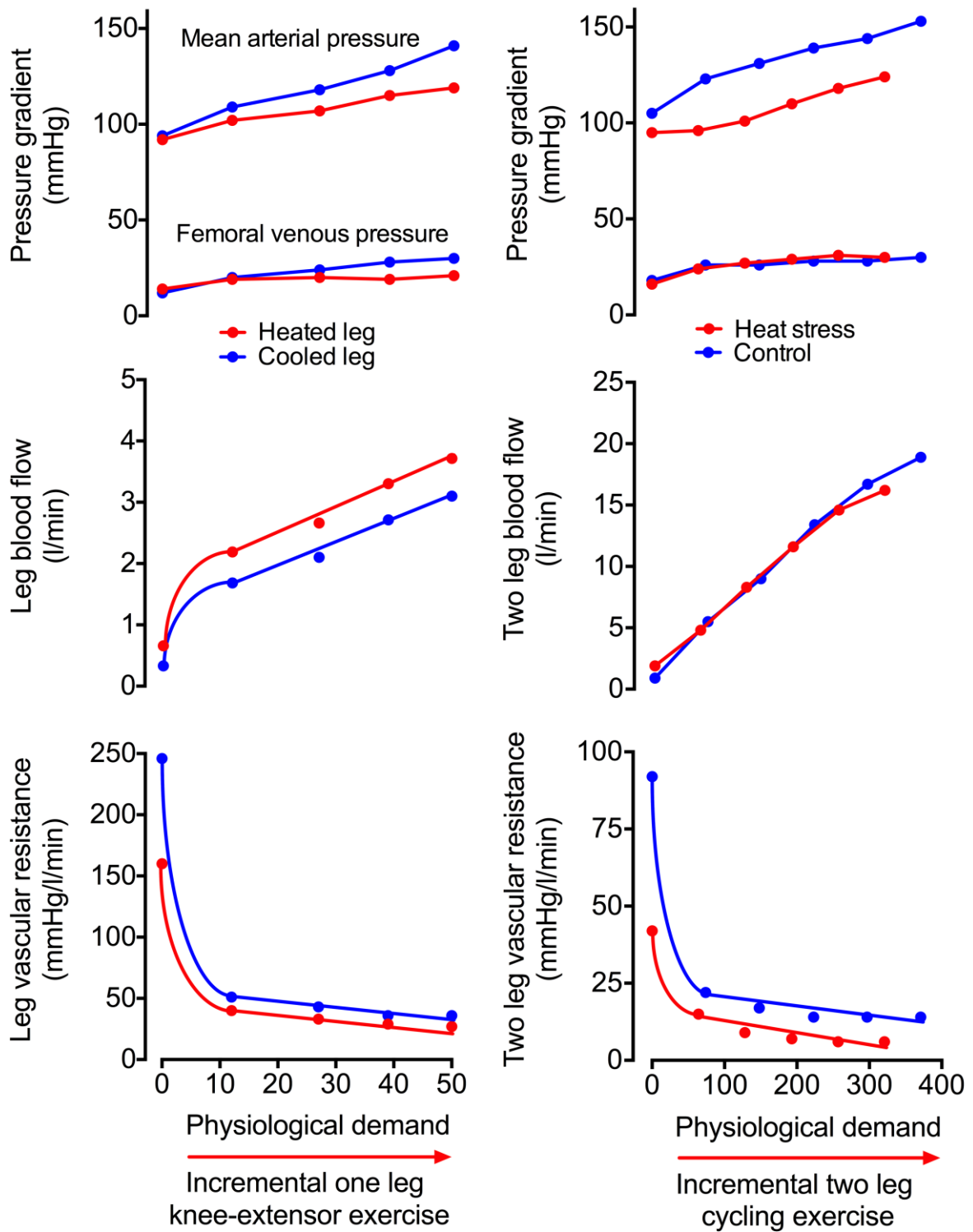


Figure 5:

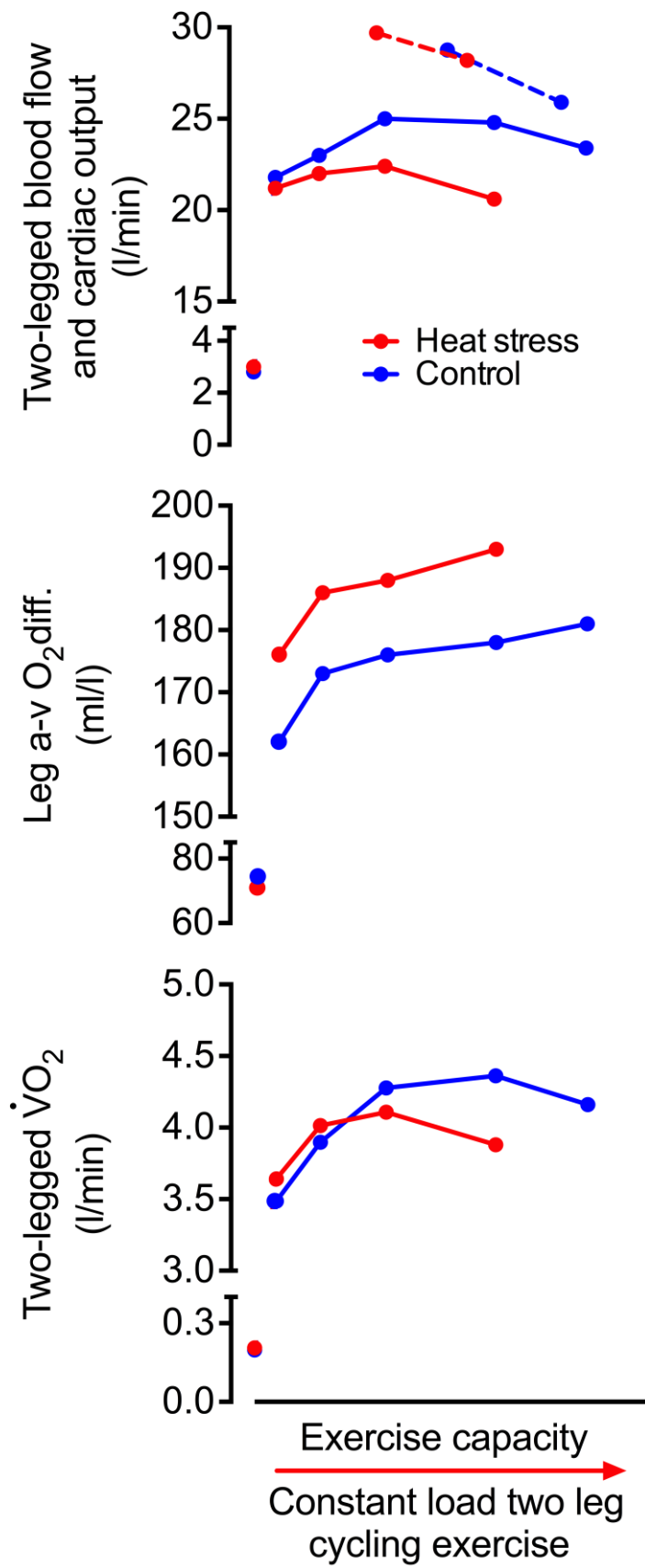


Figure 6:

