

Do early visiting services improve quality of care in primary care?

Sophie Park and Ruth Abrams
13th Nov 2018

School for
Primary Care
Research

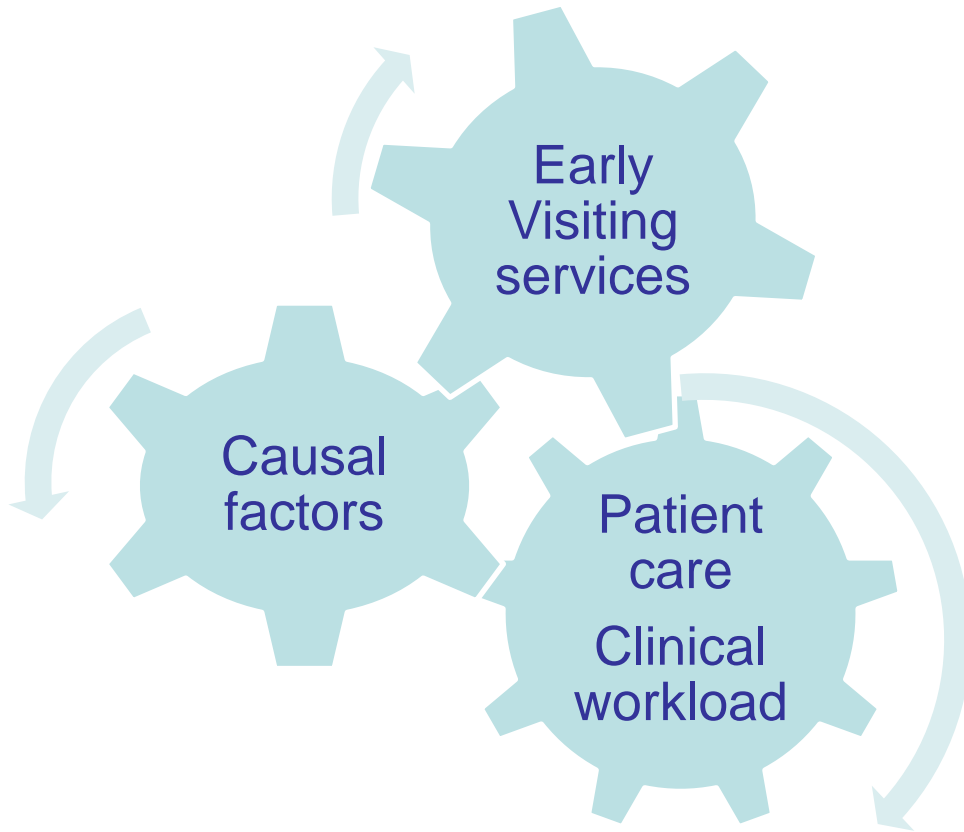
The National Institute for Health Research School for Primary Care Research (NIHR SPCR) is a partnership between the Universities of Bristol, Cambridge, Keele, Manchester, Newcastle, Nottingham, Oxford, Southampton and University College London.

Funded and supported by



National Institute for
Health Research

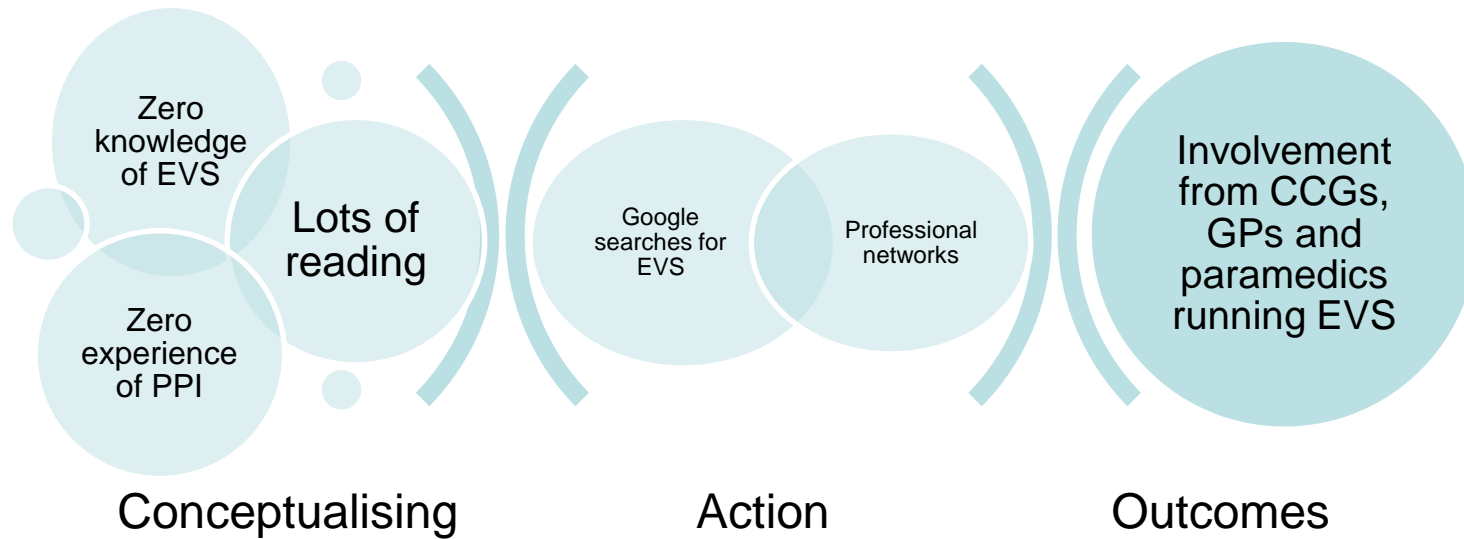
Research questions



1. What are the outcomes from early visiting services?
2. What are the mechanisms, acting at individual, group, professional and/or organisational levels, through which early visiting services result in their outcomes?
3. What are the contexts which determine whether different mechanisms produce their outcomes?

This research is funded by the National Institute for Health Research School for Primary Care Research (NIHRSPCR). The views expressed are those of the authors and not necessarily those of the NHS, the NIHR or the Department of Health.

PPI



BMJ Open

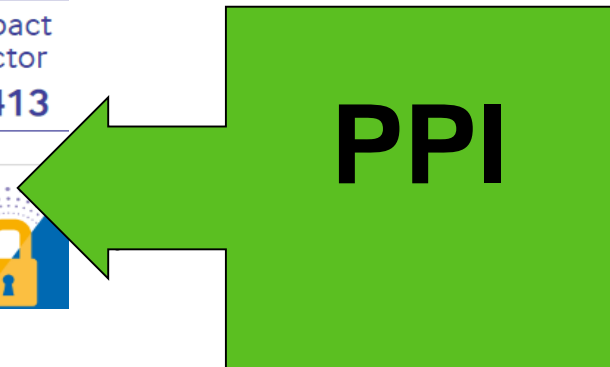
[Latest content](#) [Archive](#) [Authors](#) [About](#)

[Email alert](#)

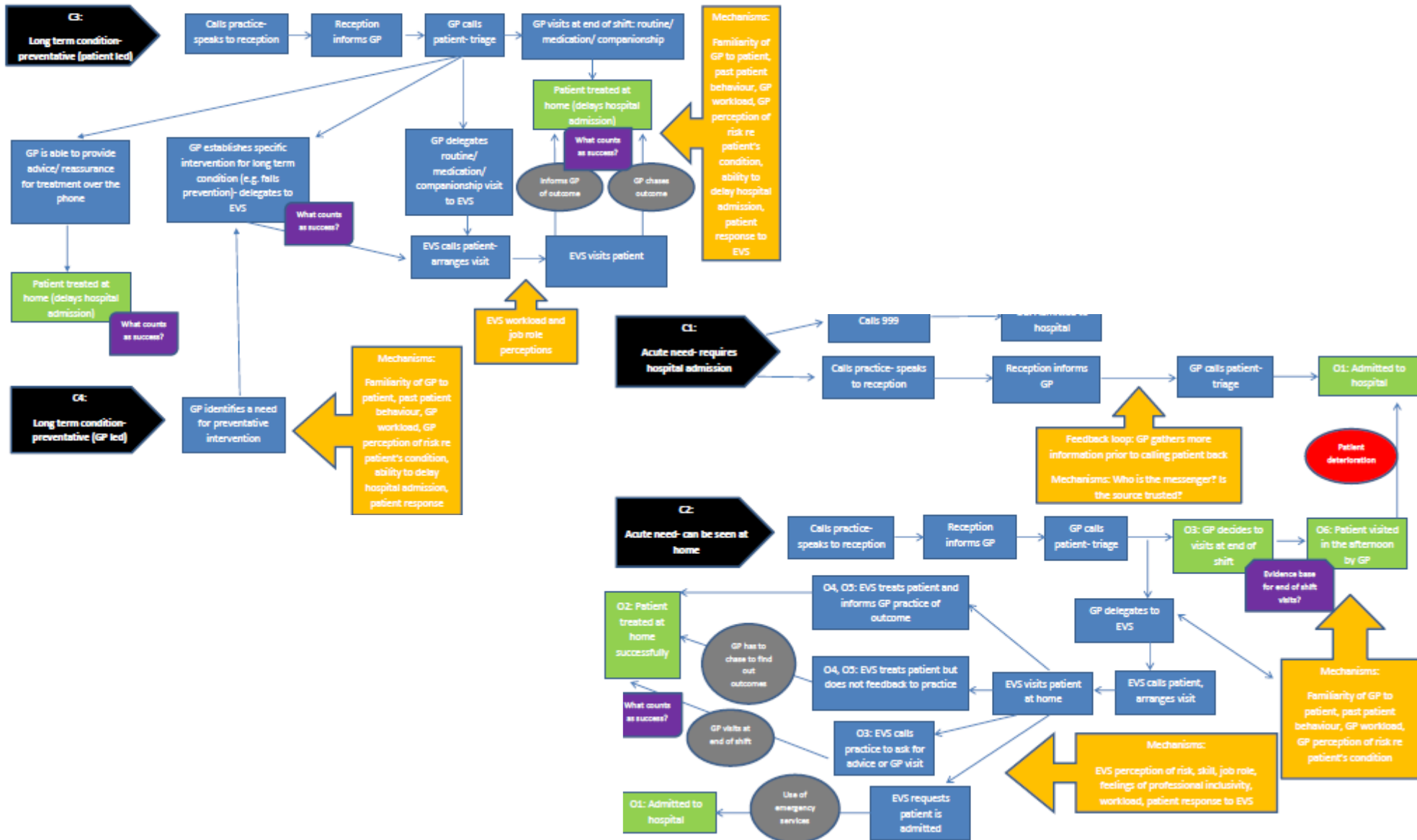
BMJ Open is an online, open access journal, dedicated to publishing medical research from all disciplines and therapeutic areas. The journal publishes all research study types, from protocols through phase I trials to meta-analyses, including small, specialist studies, and negative studies. Publishing procedures are built around fully open peer review and continuous publication, publishing research online as soon as the article is ready. BMJ Open aims to promote transparency in the publication process by publishing reviewer reports and previous versions of manuscripts as pre-publication histories. Authors are asked to pay article-publishing charges on acceptance; the ability to pay does not influence editorial decisions. All papers are included in MEDLINE/PubMed and Science Citation Index Expanded (Web of Science).

Read the press released article [Do emotions related to alcohol consumption differ by alcohol type? An](#)

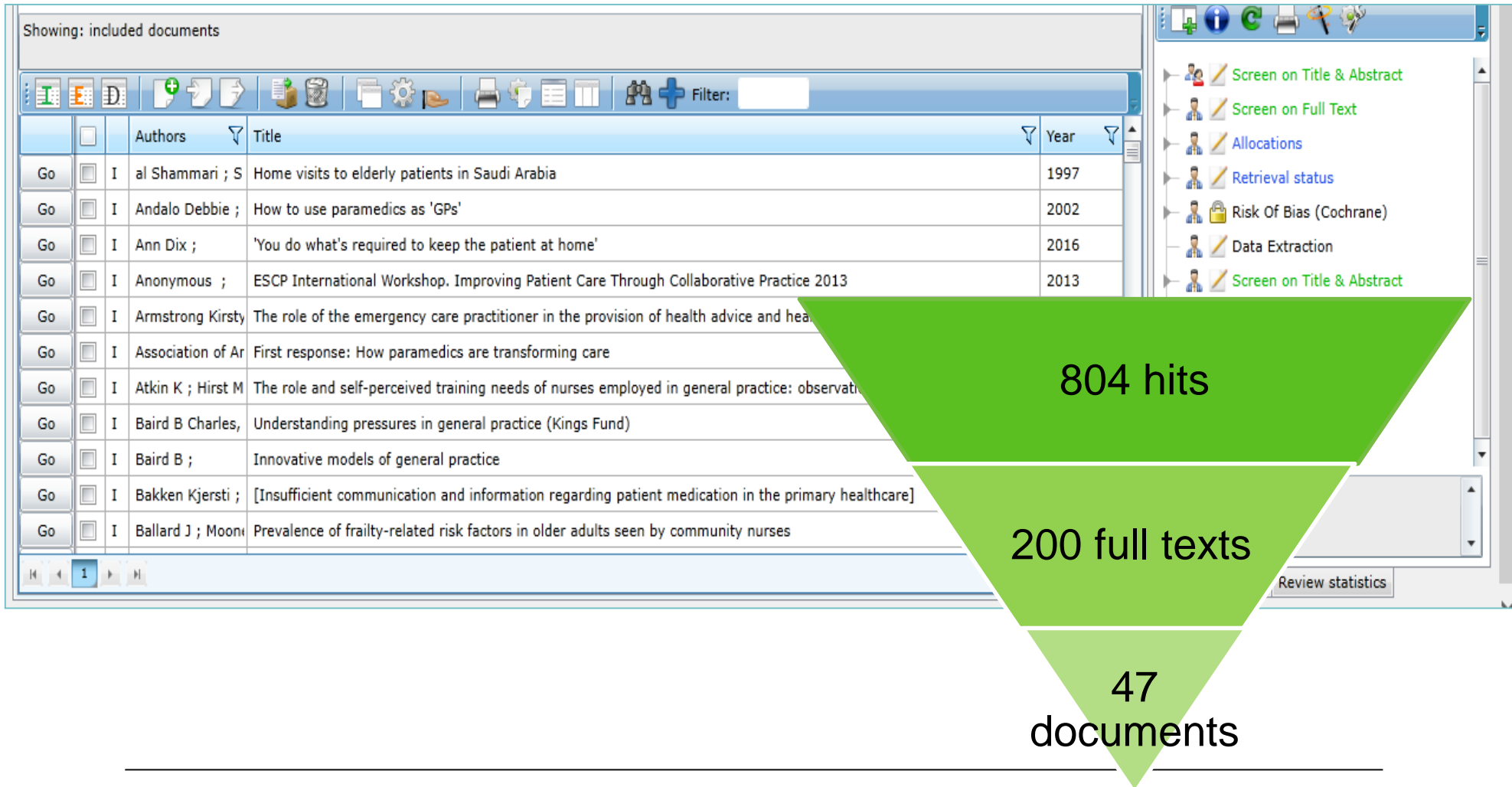
Impact Factor
2.413



Programme theory

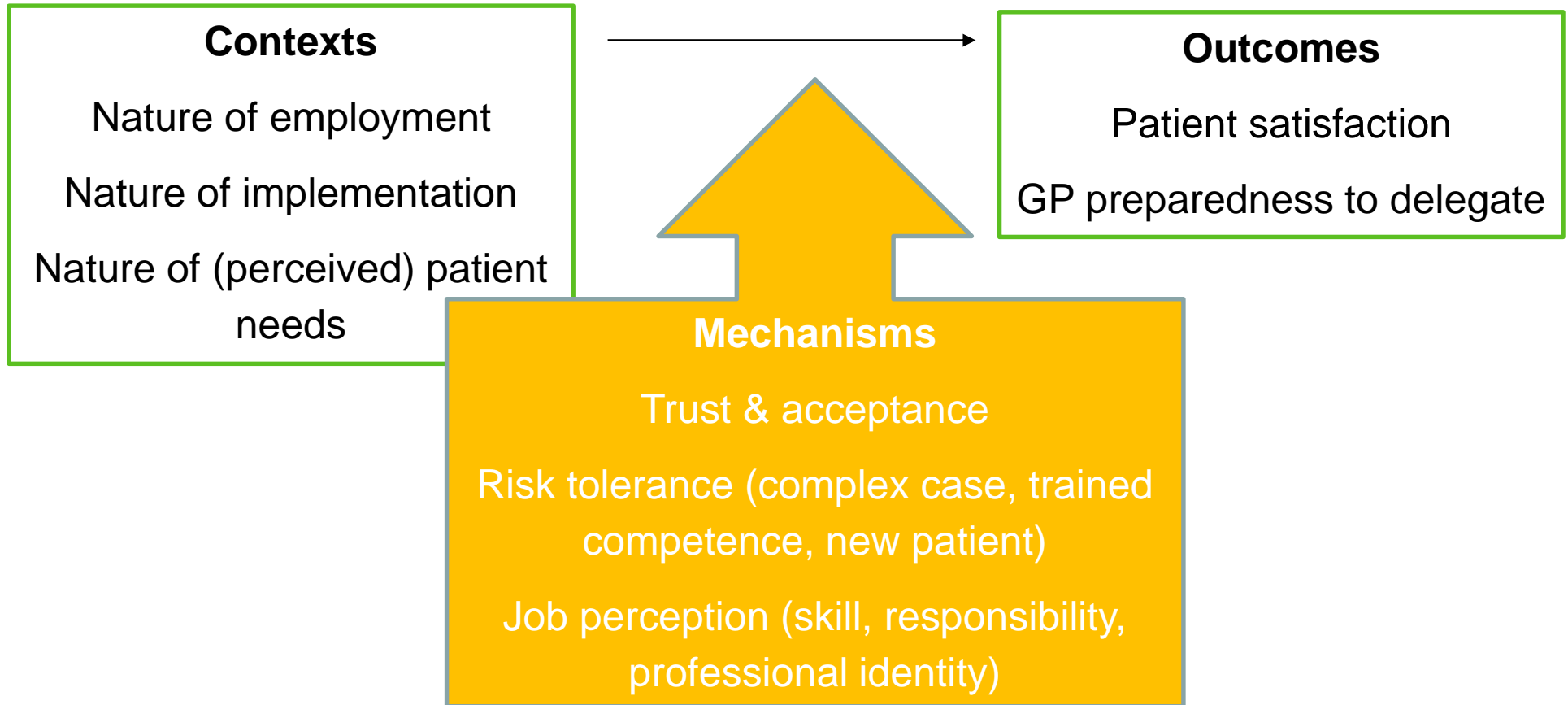


Results



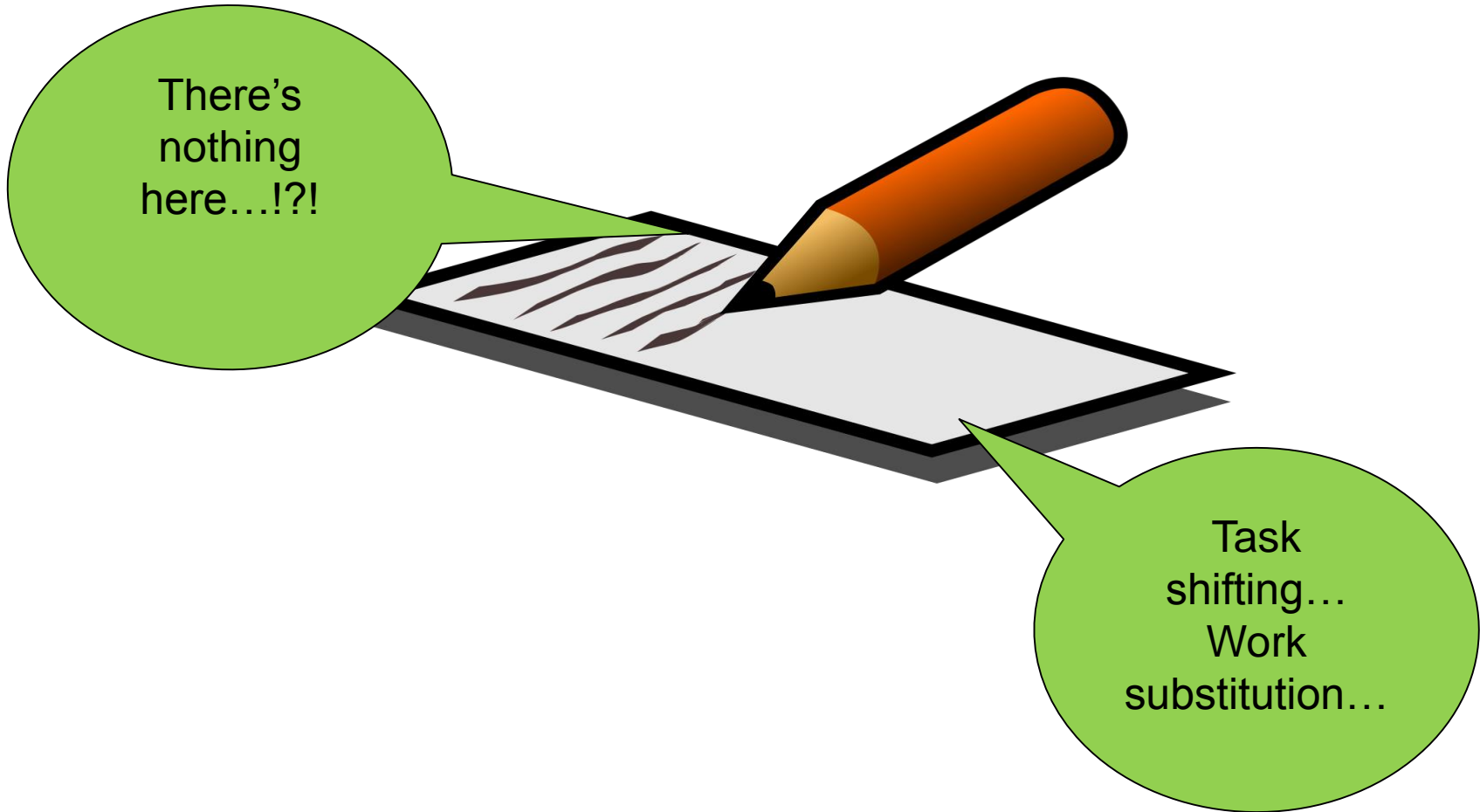
This research is funded by the National Institute for Health Research School for Primary Care Research (NIHRSPCR). The views expressed are those of the authors and not necessarily those of the NHS, the NIHR or the Department of Health.

Results



This research is funded by the National Institute for Health Research School for Primary Care Research (NIHRSPCR). The views expressed are those of the authors and not necessarily those of the NHS, the NIHR or the Department of Health.

Challenges



This research is funded by the National Institute for Health Research School for Primary Care Research (NIHRSPCR). The views expressed are those of the authors and not necessarily those of the NHS, the NIHR or the Department of Health.

Thank you

Contact: R.Abrams@ucl.ac.uk

This research is funded by the National Institute for Health Research School for Primary Care Research (NIHRSPCR). The views expressed are those of the authors and not necessarily those of the NHS, the NIHR or the Department of Health.