

Title: Safety, tolerability and efficacy of drugs for treating behavioural insomnia in children with attention-deficit/hyperactivity disorder: systematic review with methodological quality assessment.

Running Title: *Drugs for insomnia with ADHD.*

Author names and affiliations: Shweta Anand¹ BDS; Henry Tong^{2,1} PhD; Frank M C Besag^{3,6} PhD, MB, ChB, FRCP, FRCPsych, FRCPCH; Esther W Chan¹ PhD; Samuele Cortese^{4,5} MD, PhD; Ian CK Wong^{1,6} PhD.

¹Centre for Safe Medication Practice and Research, Department of Pharmacology and Pharmacy, The University of Hong Kong, ²School of Health Science, Macao Polytechnic Institute, Macao SAR, China, ³East London NHS Foundation Trust, Bedfordshire, & Institute of Psychiatry, Psychology and Neuroscience, London, UK, ⁴Department of Psychology, Developmental Brain-Behaviour Laboratory, University of Southampton, Southampton, UK, ⁵The Child Study Center at NYU Langone Medical Center, New York, NY, USA, ⁶Research Department of Practice and Policy, School of Pharmacy, University College London, London, UK

Corresponding Author:

Ian CK Wong, UCL School of Pharmacy, 29-39 Brunswick Square, London WC1N 1AX,

Phone: +44 207 753 5966, Email: i.wong@ucl.ac.uk

Compliance with Ethical Standard:

Source of Funding: This work has not been supported by any funding.

Conflict of Interest:

Shweta Anand, Henry Tong, Prof Frank MC Besag, Dr Esther W Chan and Prof Ian CK Wong declare no conflict of interest. Dr. Samuele Cortese has received grant or research support from the Solent National Health Service (NHS) Trust, UK. He has also received honorarium and travel expenses from the Association for Child and Adolescent Mental Health (ACAMH), UK, a non-profit organization all unrelated to this work.

ABSTRACT

Objective

A large proportion of paediatric patients with attention-deficit/hyperactivity disorder (ADHD) have associated sleep problems which not only affect the child's well-being but also impact family functioning. Management of sleep problems is consequently an important aspect of overall ADHD management in paediatric patients. Although some drugs are being used off-label for the management of paediatric insomnia, there is scant clinical evidence supporting their use. Our aim was to identify and assess the quality of published studies reporting the safety, tolerability and efficacy of drugs used for treating behavioural insomnia in children with ADHD.

Method

After an initial screen to determine which drugs were most commonly used, we conducted a systematic review of English-language publications from searches of PubMed, EMBASE, PsychInfo and two trial register databases to February 2017, using keywords *clonidine*, *melatonin*, *zolpidem*, *eszopiclone*, *L-theanine*, *guanfacine*, *ADHD*, *sleep disorder* and *children*. For quality assessment of included studies, we used the CONSORT checklist for randomized control trials (RCTs) and the Downs and Black checklist for non-RCTs.

Results

Twelve studies were included. Two case series for clonidine, two RCTs and four observational studies for melatonin and one RCT each for zolpidem, eszopiclone, L-theanine and guanfacine. Of the 12 included studies, only one on eszopiclone scored excellent. The quality of the rest of the studies varied from moderate to low. For clonidine, melatonin and L-theanine, improvement in sleep-onset latency and total sleep duration, were reported; however, zolpidem, eszopiclone and guanfacine failed to show any improvement when compared with placebo. Clonidine, melatonin, L-theanine, eszopiclone and guanfacine were well tolerated with mild to moderate adverse events except for zolpidem which was associated with neuropsychiatric adverse effects.

Conclusion

There is generally poor evidence for prescribing drugs for behavioural insomnia in children with ADHD. Further controlled studies are warranted.

Word count: (292)

Word count Abstract: 292

Word Count (Text): 5464

Number of tables: 3

Number of figures: 1

Number of supplementary tables: 2

1 INTRODUCTION

Attention-deficit/hyperactivity disorder (ADHD) is the most common neurodevelopmental disorder affecting children and adolescents. It is characterized by age-inappropriate and persistent symptoms of inattention and/or hyperactivity/impulsivity ¹. In a recent meta-analysis, the overall pooled prevalence of ADHD was estimated to be 7.2% ². Among the conditions associated with ADHD, sleep problems have generally received inadequate attention in the past but are currently the focus of increasing interest.

Corkum et al. ³ concluded that sleep problems had been reported in about 25-50% of children with ADHD. The sleep problems reported in children with ADHD include disturbances in sleep quality or quantity, restless leg syndrome (RLS), periodic limb movement (PLM) and sleep disordered breathing (SDB) ⁴. Among these the most common problems include difficulty initiating sleep, maintaining sleep (recurrent waking or restless sleep) and early morning awakening with inability to return to sleep ⁴⁻⁷. There is a relationship between sleep and ADHD symptoms, which seem to overlap with very little separation. It is currently not clear whether sleep disturbances are elemental to ADHD or sleep disorders cause ADHD-like symptoms. Even though the causes of ADHD-associated sleep problems seem to be complex and multifactorial, possible factors include: adverse effects of drugs taken for treating ADHD such as stimulant medication ⁸, clinical correlates stemming from core ADHD symptoms (e.g., hyperactivity at night leading to difficulty falling asleep), psychiatric comorbidities (eg bedtime behavioural issues arising from associated conduct disorder), or a combination of these factors ⁹⁻¹².

In a meta-analysis of subjective and objective sleep studies, Cortese et al. ¹³ showed that children with ADHD were significantly more impaired than controls in most of the parent-reported (subjective) parameters such as bedtime resistance, sleep-onset difficulties, daytime sleepiness and in some of the actigraphic/polysomnographic-measured (objective) sleep items, such as, sleep-onset latency and number of stage shifts in total sleep time. Using the subjective parameters, most of the studies have reported sleep disturbances such as early and middle insomnia, nocturnal awakening, short sleep time, restless sleep and daytime sleepiness in children with ADHD ¹⁴⁻¹⁶. Even though there is poor understanding of the relationship between sleep and ADHD symptoms, from a clinical standpoint, sleep disturbances associated with ADHD are very relevant since they can cause worsening of ADHD symptoms, leading to an increase in disruptive behaviour ¹⁷. Sleep disturbances can not only have a significant impact on the quality of life of the child with ADHD but can also cause parental stress, disturbed caregiver mental

health and disorganized family functioning¹⁶. Because of these issues, treatment of comorbid sleep disturbances is often a very important aspect of ADHD management. There is increasing awareness of the importance of behavioural insomnia treatments in children with ADHD. In one of the Australian Paediatric Research Network Surveys to document the management practices by Australian Paediatricians for paediatric sleep disturbances, 89.1% of paediatricians prescribed melatonin for paediatric sleep disturbance¹⁸. Out of these, 54.5% prescribed it for sleep problems in children with ADHD. Another study showed that almost one-quarter (22%) of the children with ADHD were prescribed sleep medication, with 14% and 9% taking clonidine and melatonin, respectively¹⁹. An anonymous questionnaire survey of members of the British Association for Community Child Health (BACCH) and the British Academy of Childhood Disability (BACD) was carried out in the UK to examine prescribing practices for melatonin in children²⁰. Responses to questionnaires showed that sleep-onset difficulties (39%) and night-waking (12%) were the most frequent indications reported for melatonin use, with autism (68%) and ADHD (44%) being the most frequent clinical diagnoses.

A panel of experts in ADHD and sleep concluded that non-pharmacological interventions, which include sleep hygiene and behavioural interventions, should be the first-line management^{10, 21}. The National Institute for Health and Care Excellence (NICE) also recommends non-pharmacological interventions such as good sleep hygiene or behavioural therapy²². If non-pharmacological treatments fail, pharmacological treatments may need to be considered. Drugs that have been used in clinical practice include clonidine, melatonin, antidepressants, such as trazodone and mirtazapine, hypnotics, such as zolpidem, and antihistamines¹¹. However, evidence supporting these treatments remains limited²³. Furthermore, none of these drugs has been approved for treating sleep disturbances in children with ADHD²⁴. In addition, a drug closely related to clonidine, guanfacine, which, like clonidine, is also an α -2 receptor agonist, is becoming more widely used for the treatment of ADHD. Somnolence is a major side-effect of guanfacine; it remains to be seen what role this drug will have in the management of sleep problems in children with ADHD²⁵.

Clonidine and guanfacine have been approved by FDA for ADHD treatment. However there are no approved treatments, either prescribed or over-the-counter preparations for managing sleep disturbances such as behavioural insomnia in these children, as compared to those in general paediatric populations^{4, 26, 27}. Despite the widespread use

of these unapproved agents to aid sleep in children with ADHD, few data exist on their safety, tolerability and efficacy. Furthermore, the methodological quality of the limited information available has not been assessed.

This paper provides a systematic review and methodological quality assessment of published studies on the safety, tolerability and efficacy of the most commonly used drugs for treating behavioural insomnia associated with ADHD, focusing on sleep-onset insomnia, total sleep duration and number of awakenings during the night.

2 METHODS

The systematic review was conducted in accordance with the PRISMA (Preferred Reporting Items for Systematic Reviews and Meta-Analyses) Statement ²⁸.

2.1 Systematic Search

An initial search was performed in PubMed using the search terms (adhd [ti] OR attention deficit [ti]) (sleep [ti] OR insomnia [ti]) and similar searches were carried out in Embase and PsycINFO. This initial search, identified reports on the following drugs having been used for the treatment of sleep problems in individuals with ADHD: clonidine ²⁹, melatonin ³⁰, eszopiclone ³¹, zolpidem ³², L-theanine ³³ and guanfacine ³⁴. Clonidine and guanfacine are established drugs for treating ADHD ³⁵⁻³⁷. Sedative effects of these drugs becomes advantageous for the management of sleep ³⁸. ³⁹. Melatonin is currently the most commonly used medication (hormone) for sleep problems in children ⁴⁰. The "z-drugs", such as eszopiclone and zolpidem are specifically indicated for sleep problems in adults; ⁴¹⁻⁴³ however, their safety and efficacy in patients below the age of 18 have not been established. L-theanine (5-N-ethyl-L-glutamine) is a herbal remedy that is a constituent of teas, including both green and black tea; it is promoted as inducing relaxation, although the evidence for this appears to be limited ^{44,45}.

The search strategy was then refined to focus on these six drugs and extra databases were searched. A systematic literature search of PubMed, EMBASE and PsycINFO was conducted using keywords, MeSH and Emtree terms. The following search terms were used: (ADHD OR attention deficit hyperactivity disorder OR neurodevelopmental disorder) AND (sleep OR insomnia) AND (clonidine OR melatonin OR eszopiclone OR zolpidem OR L-theanine OR guanfacine) AND (child OR children OR youth OR adolescent OR paediatric). The U.S. National Institutes of Health Trial Register (<http://www.ClinicalTrials.gov>) and the World Health Organization International Clinical

Trials Registry Platform (ICTRP) (<http://www.who.int/ictrp/en/>) were also searched to identify potentially relevant studies. All databases were searched for studies from their inception to February 2017. Duplicates were removed. Titles, abstracts and the content of the articles were screened to determine suitability for inclusion. References in the retrieved articles were also searched to identify any additional studies missed in the electronic search.

2.2 Inclusion criteria

Observational and interventional studies investigating the effects of clonidine, melatonin, zolpidem, eszopiclone, L-theanine and guanfacine on behavioural insomnia in children with ADHD were included. ADHD was defined in the papers under review according to the following criteria: Diagnostic and Statistical Manual (DSM) of Mental Disorders (version DSM-III-R, DSM-IV or DSM-IV-TR) or guidelines of the American Academy of Child and Adolescent Psychiatry or through the Diagnostic Interview Schedule for Children Version IV and parents and teachers report on the child symptom inventories⁴⁶⁻⁵². As recommended by the Cochrane group, in order to ensure high levels of methodological adequacy and to avoid the inevitable bias caused by dependence on investigators agreeing to provide data from unpublished studies, only published, peer-reviewed studies were included.

2.3 Exclusion criteria

- 1) Single case reports.
- 2) Medications used in other medical conditions, including developmental disabilities or other neurodevelopmental disorders such as autism, unless the subjects also had ADHD.
- 3) Mixed neurodevelopmental disorder subject groups; for example, autism spectrum disorder with and without ADHD, for which separate results for each subgroup were not provided.
- 4) Publications in languages other than English.
- 5) Non peer-reviewed publications (such as conference proceedings).
- 6) Animal studies.

2.4 Data extraction

Two authors selected the studies on the basis of the inclusion/exclusion criteria and extracted data including: study design, ADHD medication use, patient age, drug, sleep hygiene information and outcome measures of safety, tolerability and efficacy. Any disagreement was resolved by consensus.

2.5 Assessment of study quality

The methodological quality for the included randomised controlled trials (RCTs) was assessed using the CONSORT statement^{53, 54}. The checklist was divided into domains: title and abstract, introduction, methods, randomization, results, discussion and other information. The scores for each domain were summed to obtain the overall score. The methodological quality for observational studies was assessed using the Downs and Black scale for observational studies⁵⁵.

Two authors appraised each RCT and observational study independently. Assessment was conducted independently and cross-checked. The discrepancies were resolved by consensus. A CONSORT score from a maximum score of 25 was calculated by analysing each item in the checklist. Some of the items in the checklist contain two parts: “a” and “b”. Each CONSORT checklist item as a whole was scored as 1 if present in the appraised study or 0.5 if only one part of the item was addressed. For observational studies, the quality score was calculated from a maximum score of 28. The checklist is divided into different domains: reporting, external validity, internal validity and power. The scores for each domain are summed to obtain the overall score. The Downs and Black checklist has several domains: reporting, external validity, internal validity and power, containing 27 items. Each item was scored 1 if the answer was “yes” and 0 if the answer was “no” or unable to determine (UTD) except for one of the reporting subscales which was scored as 0 or 2. The scores were then added for total quality score. We adopted the following quality levels based on previous literature: excellent (>20 items), good (13-19) and poor (\leq 12) for CONSORT⁵⁶ and excellent (26-28), good (20-25), fair (15-19) and poor (\leq 14) for Downs and Black assessment⁵⁷⁻⁵⁹.

3 RESULTS

3.1 Search Results and general characteristics of included studies

The PRISMA flow diagram of the review is shown in Figure 1. The electronic database yielded a total of 702 records. Ten additional records were identified from the references. Titles and abstracts were screened, and the full

texts of 23 articles were further screened. Twelve studies, either observational studies or RCTs, met the inclusion criteria for this systematic review.

For clonidine, two case series were identified ^{29, 60}. For melatonin, three RCTs ^{30, 61, 62}, and three observational studies ⁶³⁻⁶⁵ met the inclusion criteria. Two studies ^{62, 66} had the same data for melatonin, hence only one was included. For zolpidem, eszopiclone, L-theanine and guanfacine, one RCT for each met the inclusion criteria ³¹⁻³⁴. Characteristics of the included studies are shown in Table 1.

3.2 Quality Assessment

RCTs

The CONSORT checklist was used for quality assessment of RCTs as shown in online resource 1. The scores for each study were as follows. For eszopiclone, Sangal et al. ³¹: 21.5, (excellent quality). For melatonin, Weiss et al. ⁶¹: 15.5 and Van der Heijden et al. ³⁰: 18.5 (both good quality) and Mohammadi et al. ⁶²: 10.5 (poor quality). For zolpidem, Blumer et al. ³²: 17.5 (good quality). For L-theanine, Lyon et al. ³³: 9.5 (poor quality). For guanfacine, Rugino ³⁴: 17.5 (good quality). The individual scores for each study are detailed in Table 2.

Observational Studies

The Downs and Black checklist was used for observational studies as shown in online resource 2. The scores for each study were as follows. For clonidine, Wilens et al. ²⁹: 4 and Prince et al. ⁶⁰: 13, (poor quality). For melatonin, Tjon Pian Gi et al. ⁶³: 11, Ayyash et al. ⁶⁵: 14, (both poor quality) and Hoebert et al. ⁶⁴: 22 (good quality). The quality of the results is detailed in Table 3.

The results from both RCTs and observational studies indicated that the quality of most of the available studies for the drugs treating behavioural insomnia in children with ADHD is not very high.

3.3 Efficacy of the Pharmacological agents

Please note that, for all the studies in this section, where specific measures have been used or statistically significant differences have been found, these have been stated in the text that follows. Further information, for example on the quality of the studies, is available in the tables and elsewhere in the paper but, to avoid unnecessary duplication, has not been repeated here.

3.3.1 Clonidine

Based on a case series of more than 100 children with ADHD, Wilens et al. ²⁹ stated that the beneficial effects of clonidine on sleep commenced within 30 minutes and persisted until morning. Both children and parents reported (subjective measure) favourable comments regarding clonidine treatment taken at bedtime, with overall improvement of sleep problems: less oppositional behaviour in the context of sleep activities, reduced sleep latency, less sleep restlessness, increased number of hours slept and improved morning awakening.

Prince et al. ⁶⁰ carried out a systematic chart review of 62 children with ADHD and sleep problems, such as difficulty falling asleep, restless sleep and difficulty awakening. Subjective measures such as clinical global assessment of sleep severity (CGS) and of improvement (CGI) were used to rate sleep, with scores which ranged from 1-7. 53 out of 62 (85%) of the children and adolescents had CGI values of 1 (very much improved; n=19) or 2 (much improved; n=34).

3.3.2 Melatonin

Weiss et al. ⁶¹ evaluated the efficacy of sleep hygiene and melatonin for initial insomnia in children with ADHD in a RCT. Attention to sleep hygiene resulted in significant improvement in mean sleep-onset latency (SOL) from baseline (91.7 min reported subjectively by somnolog which were parents completed sleep logs and 98.1 min reported objectively by actigraphy) to 69.3 min by somnolog and 73 min by actigraphy (in five subjects); i.e. mean sleep-onset latency was improved (decreased) by 22.4 min by somnolog and 15.1 min by actigraphy. For non-responders to sleep-hygiene measures, the mean Somnolog SOL (documentation from parents for the amount of time between when the child was put to bed and when he/she fell asleep) for melatonin was 46.4 min (standard deviation (SD)=26.4) and for placebo was 62.1 min (SD=26.6). Two-sample t-tests comparing the mean period difference between sleep latencies and crossover treatment differences for melatonin vs placebo indicated a significant difference between these sleep latencies ($p<0.01$) and a significant period effect (period difference in two crossover-treatment sequences) ($p<0.05$). For total night-time sleep, more time asleep (15 min) was evident during melatonin treatment, ($p<0.01$) on somnolog monitoring, whereas actigraphic ⁶⁷ analysis did not show a significant treatment difference. Open-label follow-up did not show a significant improvement in SOL; however, the improvement in sleep duration by 23 minutes continued, ($p<0.01$) with the melatonin treatment.

Van der Heijden et al.³⁰ investigated the efficacy of melatonin on sleep objectively with actigraphy and with dim light melatonin onset (DLMO) using saliva samples and also with assessments of behaviour, cognition and quality of life using different questionnaires in an RCT. There was an increase in mean total time asleep of 19.8 ± 61.9 minutes with melatonin and a decrease of 13.6 ± 50.6 minutes with placebo ($p=0.01$). Compared with placebo, the melatonin group had a statistically significant decrease in sleep latency ($p=0.001$), increase in sleep efficiency ($p=0.01$), and decrease in nocturnal restlessness ($p=0.03$). The saliva samples of melatonin-treated children showed an advance in DLMO of 44.4 ± 67.9 minutes compared with a delay of 12.8 ± 60.0 minutes in children receiving placebo ($p<0.0001$). No statistically significant improvement was found in problem behaviour, cognitive ability or quality of life scores assessed on the different questionnaires.

Mohammadi et al.⁶² in another RCT, subjectively studied the effects of melatonin on sleep, and features of hyperactivity and attention deficit in children taking methylphenidate (Ritalin). The mean sleep latency (in minutes) decreased with melatonin. The mean latency at baseline for placebo was 21.37 and at eight weeks was 26.37. The mean latency at baseline for melatonin was 23.15 and at eight weeks was 17.96. The mean total sleep duration (in hours) increased with melatonin. The mean sleep duration at baseline for placebo was 8.77 and at eight weeks was 8.27 (slight deterioration). The mean sleep duration at baseline for melatonin was 8.0 and at eight weeks was 8.51 (improvement). The mean sleep latency and total sleep disturbance scores were reduced in the melatonin group, while the scores increased in the placebo group but no statistically significant differences were found for the two groups during the study period.

Tjon Pian Gi et al.⁶³ demonstrated the effect of melatonin on sleep-onset insomnia in children with ADHD on methylphenidate in an observational study through subjective measures. Short-term (1-4 weeks) and long-term (after 3 months) effects showed significant improvement in sleep latency, varying between 15-240 minutes and between 15-64 minutes, respectively. Relapse of sleep-onset insomnia occurred when melatonin treatment was forgotten during the study and after end of the study but improved when the melatonin was restarted.

Hoebert et al.⁶⁴ in a follow-up study, aimed to determine the long-term effectiveness and safety of melatonin therapy through subjective measures, along with the relapse rate of sleep-onset insomnia (SOI) after discontinuing melatonin treatment. Twenty two children (23.4%) discontinued melatonin completely because of either total improvement of SOI (8), adverse events (3), initiative of treating physician (2), concerns about long-term treatment

effects (2), refusal by child (1), lack of positive effect of therapy (3), melatonin therapy substituted by light therapy (1) and for unknown reason (2). DLMO, as in the initial study, was assessed at the baseline and on the first evening of the fourth week. The mean (\pm SEM) pre-treatment DLMO time of the eight children who discontinued melatonin completely because of improvement of SOI was 20:21 \pm 0.25 hrs, while this was 20:41 \pm 0.06 hrs in the remaining subjects, who discontinued treatment due to other reasons ($p=0.413$, ES = -0.09). The mean pre-treatment DLMO of the 11 children (20:11 \pm 0.15 hrs) who used melatonin occasionally was earlier as compared to DLMO in the 61 children (20:48 \pm 0.007 hrs) who took melatonin daily ($p=0.037$, ES = -0.26). Almost 90% of parents were satisfied with melatonin for the improvement of sleep-onset problems, 70.8% for improved daytime behaviours and 60.9% for improvement of mood. The authors concluded that melatonin improved chronic SOI in children with ADHD only as long as treatment was continued but did not cure it.

Ayyash et al.⁶⁵ subjectively assessed the effects of melatonin on sleep latency and night-time awakening in children with neurodevelopmental disorders (ADHD, autism spectrum disorder or intellectual disability) in an observational study. The increase in the mean (\pm SD) for total sleep time (hours/night) in children with ADHD only was 2.68 \pm 1.22, ($p<0.001$), for sleep latency the mean decrease was 1.24 \pm 1.20 hours, ($p<0.02$) and for awakening (number/night) the mean decrease was 0.23 \pm 0.22, ($p<0.02$). Significant improvement in all three sleep problems was observed via sleep diaries.

3.3.3 Zolpidem

Blumer et al.³² evaluated the hypnotic efficacy of zolpidem compared with placebo in children with ADHD-associated insomnia in an RCT. No significant difference in latency to persistent sleep (LPS) between the zolpidem group (-20.28 min) and placebo (-21.27 min) was detected at week 4. For actigraphic (objective) measures at week 4, the baseline-adjusted least square (LS) mean difference \pm standard error (SE) for total sleep time (i.e., total sleep time minus baseline total sleep time) was 2.77 \pm 14.23 min, ($p=.8461$), and for LPS was 1.55 \pm 110.37 min, ($p=.8884$), indicating no significant difference between the groups. On the basis of Clinical Global Impression-Improvement (CGI-I) child assessments (subjective measure), the zolpidem group showed greater improvement in child score, compared with the placebo group at week 4 with LS mean difference \pm SE of 0.4 \pm 0.200, ($p=.0280$). For Clinical Global Impression-Severity (CGI-S) child scores at week 4, the baseline-adjusted mean decrease was greater for the zolpidem as compared with placebo with LS mean difference \pm SE of -0.64 \pm 0.230, ($p=.0059$). At week 4 and 8,

CGI-I and CGI-S variables showed greater improvement with zolpidem for the 12-to-17-year age group but not for the 6-to-11-year age group.

3.3.4 L-theanine

Lyon et al.³³ investigated the efficacy of L-theanine on objective and subjective aspects of sleep quality in boys with ADHD in an RCT. The objective sleep-quality measures were actigraph watch data and the subjective sleep measure was the Paediatric Sleep Questionnaire (PSQ). The actigraphy results indicated that the percent of time spent in restful sleep was increased in the L-theanine group compared to the placebo group ($p < 0.05$) and there were fewer nocturnal activities in the L-theanine group compared to the placebo group ($p < 0.05$). A lower mean number of minutes spent awake after onset of sleep was found in the L-theanine as compared with placebo, although this did not quite reach statistical significance ($p < 0.058$). There was no significant difference between the groups for sleep latency or duration ($p > 0.05$). The authors did not present the details of the PSQ data but stated that this did not correlate significantly to the objective data gathered from actigraphy, suggesting that parents were not particularly aware of the quality of their child's sleep.

3.3.5 Eszopiclone

Sangal et al.³¹ found no significant differences between eszopiclone (high or low dose) groups and the placebo groups in the change from baseline to week 12 on polysomnography-measured LPS in an RCT: for high-dose eszopiclone vs. placebo, ($p = 0.3749$), and for low-dose eszopiclone vs. placebo, ($p > 0.9999$). Assessment of secondary subjective measures (patient/parent reports on sleep-onset latency, total sleep time, wake time after sleep onset (WASO), number of awakenings after sleep onset and sleep quality) revealed no statistically significant differences on hierarchical statistical analysis.

3.3.6 Guanfacine

Rugino³⁴ found that in comparison to placebo guanfacine worsen certain sleep parameters. The total sleep time for treatment group decrease by 57.32 min (SD=89.17) in comparison to increase by 31.32 min (SD=59.54) in placebo group ($p = .005$), showing a statistically significant difference. The children in treatment group were awake for a mean of 4.19 more minutes per hour of sleep whereas the children with placebo were awake for a mean of 0.58 min less per hour of sleep, showing a significant difference. Later onset of persistent sleep by 10.54 ± 88.44 min was seen

in the treatment group compared with 19.94 ± 54.12 min earlier with placebo however this difference did not reach statistical significance. No statistical significance was seen in time of persistent sleep and time of awakening between two groups.

3.4 Tolerability/Safety of pharmacological agents

3.4.1 Clonidine

In the systematic chart review by Prince et al.⁶⁰ treatment-emergent adverse events (TEAEs) with clonidine were usually mild, occurring in 31% of patients, the most common being sedation and fatigue. In one child, clonidine was associated with depression, which resolved after discontinuation of the drug. In the case series reported by Wilens et al.²⁹ neither the cardiovascular nor central nervous system adverse reactions typical for clonidine were observed.

3.4.2 Melatonin

The TEAEs reported with melatonin have usually been mild and similar to those with placebo. Weiss et al.¹¹ reported a single serious event of migraine. Van der Heijden et al.³⁰ reported no significant difference between the melatonin and placebo groups. Adverse events such as headache, hyperactivity, dizziness and abdominal pain were reported. Hoebert et al.⁶⁴ reported adverse events of sleep-maintenance insomnia, excessive morning sedation, decreased mood, headache, profuse perspiration and daytime laziness. Persistence of these events led to discontinuation of melatonin in three children. Mohammadi et al.⁶² reported that there was no statistically significant difference between mean scores of adverse effects for melatonin and placebo ($p=0.686$) based on stimulant drug side effect questionnaire; however, the study was not powered adequately to allow any definitive comment on this issue. The most common adverse events reported were irritability, loss of appetite, sadness, weight loss, headache and difficulty falling asleep.

3.4.3 Zolpidem

In the study by Blumer et al.³² one or more TEAEs were reported in 62.5% of the zolpidem-treated group and 47.7% of the placebo-treated group. The TEAEs included dizziness, headache and hallucination. Administration was discontinued permanently because of TEAEs in 10 patients in the zolpidem group, compared with none in the placebo group. The main TEAE leading to discontinuation of zolpidem was hallucination, which occurred in 10 of 136 patients.

3.4.4 L-theanine

Only one minor TEAE (facial tic) was observed for patients treated with L-theanine in the study by Lyon et al.³³. The event causality was deemed unlikely by the principal investigator. No other TEAEs were noted.

3.4.5 Eszopiclone

In the study by Sangal et al.³¹ TEAEs were reported for 61.0%, 59.5% and 46.0% of the patients receiving high-dose eszopiclone, low-dose eszopiclone and placebo, respectively. The most commonly reported TEAEs with eszopiclone were headache, dysgeusia and dizziness. Reported TEAEs of special interest included skin reaction, hallucination and suicidality. The open-label extension for this RCT demonstrated that eszopiclone was generally well tolerated for up to one year. Several patients discontinued treatment due to hallucinations and suicidal ideation; the former was noted in 2.3% and the latter in 1% of eszopiclone-treated patients.

3.4.6 Guanfacine

In this study Rugino³⁴ reported treatment-emergent somnolence in 73% of children in treatment group as compared to 6% in placebo group. No electrocardiographic, laboratory, growth, or vital sign parameter was statistically significantly different between the two groups.

4 DISCUSSION

To our knowledge, this is the first systematic review assessing the quality of studies of pharmacological treatments for behavioural insomnia in children with ADHD. Based on the results from the methodological quality assessment, only one high-quality study (RCT on eszopiclone³¹ was identified. Except for the RCT on eszopiclone³¹ and an observational study on melatonin⁶⁴, the rest of the studies scored moderate to low on quality, reflecting a number of

issues, including high risk of bias (due to poor methodological quality), inconsistency (due to the high degree of heterogeneity between studies) and inaccuracy/unreliability (due to the low numbers of participants).

In most of the studies, the determination of behavioural insomnia was based on small sample sizes using subjective measures (parental reports, Somnologs or questionnaires) rather than more precise objective measures, using actigraphy. The retrospective chart review on clonidine by Prince et al. ⁶⁰ was subject to observer bias. The small research letter by Tjon Pian Gi et al. ⁶³ on melatonin did not provide sufficient details on study methodology, diagnosis of sleep insomnia or patient characteristics. No randomization or blinding was performed and consequently a placebo effect could not be excluded. In the Weiss et al. ⁶¹ study on melatonin, the effect of sleep hygiene could not be isolated from the effect of the melatonin. Although this is a relatively minor issue, the criterion for SOI in the study by Van der Heijden et al. ³⁰ on melatonin was based on a Dutch child population and may not be generalizable to other population groups. A more important issue was that a considerable amount (31%) of data were missing, implying limitations to the data analysis and potential bias.

The Hoebert et al. ⁶⁴ study on melatonin lacked a long-term placebo arm and the questionnaire lacked information regarding concomitant medication. In the Mohammadi et al. ⁶² study on melatonin, the confounding effect of methylphenidate could not be excluded. Lyon et al. ³³ studied the effect of the drug L-theanine in boys only. The results for guanfacine cannot be generalised due to unequal sample sizes at baseline and early termination of study ³⁴. Given the high prevalence and compelling impact of behavioural insomnia in these children, there is a need for effective pharmacological agents with strong evidence. There is currently insufficient evidence to allow firm recommendations to be made with regard to the prescription of these pharmacological agents, due to a lack of high-quality published studies; however melatonin, has showed consistent positive results. Zolpidem, eszopiclone and guanfacine showed unremarkable results by worsening different sleep parameters when compared with placebo. Although there are RCTs on the use of melatonin, zolpidem, eszopiclone, L-theanine and guanfacine for sleep-onset delay, the small number and the limitations of these RCTs imply that there is inadequate evidence on efficacy, effectiveness and safety. We note that a formal meta-analysis could not be performed due to the low quality and heterogeneous nature of the studies.

4.1 Additional limitations

Sleep issues in children with ADHD can be affected by a number of additional variables which may be confounding factors in the assessment of efficacy or adverse effects of medication used to treat behavioural insomnia. These include the following.

First, ADHD is not a single condition but is a group of conditions with certain core features in common, typically poor concentration, over activity and impulsivity. Against this background it is not surprising that a drug that is effective in treating ADHD in one child may be ineffective in another; similarly, it would not be surprising if a drug that was effective in treating sleep in one child with ADHD was ineffective in another. In particular, there is a subgroup of children with ADHD in whom sleep onset is improved with an evening dose of methylphenidate whereas, in most children, an evening dose of methylphenidate would delay sleep onset ⁶⁸.

Second, the medication used to treat ADHD may be a confounding factor when assessing drugs used to help with behavioural insomnia. Some medications that are frequently used to treat ADHD can delay sleep onset whereas others are either sleep neutral or may improve sleep. For example, methylphenidate or dexamfetamine typically delay sleep onset (except in the subgroup referred to in the previous paragraph) whereas other medications are sleep neutral or may improve sleep such as clonidine ⁶⁹⁻⁷¹. This implies that the assessment of medications used to treat behavioural insomnia in children with ADHD should be adjusted for co-medication used to treat the ADHD, which may not be easy to achieve.

Third, ADHD is associated with a very high rate of comorbidities which may, in turn be associated with a high rate of sleep problems, which could affect the response to sleep medication. For example, autism spectrum disorder is associated with a high rate of ADHD and is also associated with a high rate of sleep disorders. Medications used to treat the comorbidities can also have a major effect on sleep. For example, risperidone used to treat anxiety and behavioural disorders in children with autism spectrum disorder and ADHD can improve sleep ⁷².

Fourth, sleep is highly dependent on environmental factors ⁷³. Proper attention to sleep hygiene should minimise the confounding effects of such factors but may not eliminate them completely.

Finally, we limited our search to papers in English.

4.2 Implications

Our systematic review suggests that, with the possible exception of melatonin, there is generally an insufficient evidence base for the use of medications in treating sleep-related disturbances such as insomnia in ADHD. It was also seen that zolpidem, eszopiclone and guanfacine did not show significant improvement in different sleep parameters when compared with placebo. Considering that there are currently no FDA drugs approved for the treatment of sleep disturbance in children with ADHD, clinicians should discuss the limitations of available evidence carefully with the patient and the family, aiming for a short period of treatment, should a trial with a pharmacological intervention be agreed.

Further high-quality research is required, as these medications appear to be widely used despite the lack of long-term data on benefits or risks. Future research should include RCTs with sufficient sample size, using both objective and subjective outcome measures. They should be powered adequately to yield statistically meaningful results of the measures of interest. These studies should evaluate the effect of pharmacological agents not only on the sleep-associated disturbances but also on long-term daytime function, health and well-being.

5 CONCLUSION

Although some of the included studies reported similar conclusions of having a positive effect in improving behavioural insomnia, because of their low quality, small sample sizes and heterogeneous designs, the results cannot be viewed as reliable. Incontrovertible evidence establishing the definitive values of clonidine, melatonin, zolpidem, eszopiclone, L-theanine and guanfacine in treating ADHD-related behavioural insomnia in children does not appear to be available. Further high-quality research and RCTs are required to evaluate the effectiveness and safety of these pharmaceutical agents in treating behavioural insomnia in children with ADHD.

REFERENCES

1. American Psychiatric Association, *Diagnostic and Statistical Manual of Mental Disorders 5th ed.* Arlington, VA. 2013, American Psychiatric Publishing.
2. Thomas, R., et al., *Prevalence of Attention-Deficit/Hyperactivity Disorder: A Systematic Review and Meta-analysis.* Pediatrics, 2015.
3. Corkum, P., R. Tannock, and H. Moldofsky, *Sleep disturbances in children with attention-deficit/hyperactivity disorder.* J Am Acad Child Adolesc Psychiatry, 1998. **37**(6): p. 637-46.
4. Barrett, J.R., D.K. Tracy, and G. Giaroli, *To sleep or not to sleep: a systematic review of the literature of pharmacological treatments of insomnia in children and adolescents with attention-deficit/hyperactivity disorder.* J Child Adolesc Psychopharmacol, 2013. **23**(10): p. 640-7.
5. Corkum, P., et al., *Better Nights/Better Days-Distance Intervention for Insomnia in School-Aged Children With/Without ADHD: A Randomized Controlled Trial.* J Pediatr Psychol, 2016. **41**(6): p. 701-13.
6. Yoon, S.Y., U. Jain, and C. Shapiro, *Sleep in attention-deficit/hyperactivity disorder in children and adults: past, present, and future.* Sleep Med Rev, 2012. **16**(4): p. 371-88.
7. Chiang, H.L., et al., *Association between symptoms and subtypes of attention-deficit hyperactivity disorder and sleep problems/disorders.* Journal of Sleep Research, 2010. **19**(4): p. 535-545.
8. Ironside, S., F. Davidson, and P. Corkum, *Circadian motor activity affected by stimulant medication in children with attention-deficit/hyperactivity disorder.* J Sleep Res, 2010. **19**(4): p. 546-51.
9. Harpin, V.A., *The effect of ADHD on the life of an individual, their family, and community from preschool to adult life.* Arch Dis Child, 2005. **90** Suppl 1: p. i2-7.
10. Sciberras, E., et al., *Managing sleep problems in school aged children with ADHD: a pilot randomised controlled trial.* Sleep Med, 2011. **12**(9): p. 932-5.
11. Weiss, M.D. and J. Salpekar, *Sleep problems in the child with attention-deficit hyperactivity disorder: Defining aetiology and appropriate treatments.* CNS Drugs, 2010. **24**(10): p. 811-828.
12. Hunt, R.D., R.B. Minderaa, and D.J. Cohen, *Clonidine benefits children with attention deficit disorder and hyperactivity: report of a double-blind placebo-crossover therapeutic trial.* J Am Acad Child Psychiatry, 1985. **24**(5): p. 617-29.

13. Cortese, S., et al., *Sleep in children with attention-deficit/hyperactivity disorder: meta-analysis of subjective and objective studies*. J Am Acad Child Adolesc Psychiatry, 2009. **48**(9): p. 894-908.
14. Li, S., et al., *Sleep problems in chinese school-aged children with a parent-reported history of ADHD*. J Atten Disord, 2009. **13**(1): p. 18-26.
15. Hvolby, A., J. Jorgensen, and N. Bilenberg, *Parental rating of sleep in children with attention deficit/hyperactivity disorder*. Eur Child Adolesc Psychiatry, 2009. **18**(7): p. 429-38.
16. Sung, V., et al., *Sleep problems in children with attention-deficit/hyperactivity disorder: prevalence and the effect on the child and family*. Arch Pediatr Adolesc Med, 2008. **162**(4): p. 336-42.
17. Dahl, R.E., *The impact of inadequate sleep on children's daytime cognitive function*. Semin Pediatr Neurol, 1996. **3**(1): p. 44-50.
18. Heussler, H., et al., *Pharmacological and non-pharmacological management of sleep disturbance in children: an Australian Paediatric Research Network survey*. Sleep Med, 2013. **14**(2): p. 189-94.
19. Efron, D., K. Lycett, and E. Sciberras, *Use of sleep medication in children with ADHD*. Sleep Med, 2014. **15**(4): p. 472-5.
20. Waldron, D.L., D. Bramble, and P. Gringras, *Melatonin: prescribing practices and adverse events*. Arch Dis Child, 2005. **90**(11): p. 1206-7.
21. Cortese, S., et al., *Assessment and management of sleep problems in youths with attention-deficit/hyperactivity disorder*. Journal of the American Academy of Child and Adolescent Psychiatry, 2013. **52**(8): p. 784-796.
22. [ESUOM2], N.a., <http://www.nice.org.uk/advice/esuom2>. January 2013.
23. Cortese, S., et al., *Assessment and management of sleep problems in youths with attention-deficit/hyperactivity disorder*. J Am Acad Child Adolesc Psychiatry, 2013. **52**(8): p. 784-96.
24. Owens, J.A., et al., *The use of pharmacotherapy in the treatment of pediatric insomnia in primary care: rational approaches. A consensus meeting summary*. J Clin Sleep Med, 2005. **1**(1): p. 49-59.
25. Spencer, T.J., et al., *Safety and effectiveness of coadministration of guanfacine extended release and psychostimulants in children and adolescents with attention-deficit/hyperactivity disorder*. J Child Adolesc Psychopharmacol, 2009. **19**(5): p. 501-10.
26. Owens, J.A., C.L. Rosen, and J.A. Mindell, *Medication use in the treatment of pediatric insomnia: results of a survey of community-based pediatricians*. Pediatrics, 2003. **111**(5 Pt 1): p. e628-35.
27. Tsai, M.H., J.F. Hsu, and Y.S. Huang, *Sleep Problems in Children with Attention Deficit/Hyperactivity Disorder: Current Status of Knowledge and Appropriate Management*. Curr Psychiatry Rep, 2016. **18**(8): p. 76.
28. Moher, D., et al., *Preferred reporting items for systematic reviews and meta-analyses: the PRISMA statement*. BMJ, 2009. **339**: p. b2535.
29. Wilens, T.E., J. Biederman, and T.J. Spencer, *Clonidine for sleep disturbances associated with attention-deficit hyperactivity disorder*. Journal of the American Academy of Child & Adolescent Psychiatry, 1994. **33**(3): p. 424-426.
30. Van der Heijden, K.B., et al., *Effect of Melatonin on Sleep, Behavior, and Cognition in ADHD and Chronic Sleep-Onset Insomnia*. Journal of the American Academy of Child & Adolescent Psychiatry, 2007. **46**(2): p. 233-241.
31. Sangal, R.B., et al., *Eszopiclone for insomnia associated with attention-deficit/hyperactivity disorder*. Pediatrics, 2014. **134**(4): p. e1095-e1103.
32. Blumer, J.L., et al., *Controlled clinical trial of zolpidem for the treatment of insomnia associated with attention-deficit/ hyperactivity disorder in children 6 to 17 years of age*. Pediatrics, 2009. **123**(5): p. e770-e776.

33. Lyon, M.R., M.P. Kapoor, and L.R. Juneja, *The effects of L-theanine (Suntheanine) on objective sleep quality in boys with attention deficit hyperactivity disorder (ADHD): A randomized, double-blind, placebo-controlled clinical trial*. *Alternative Medicine Review*, 2011. **16**(4): p. 348-354.
34. Rugino, T.A., *Effect on Primary Sleep Disorders When Children With ADHD Are Administered Guanfacine Extended Release*. *J Atten Disord*, 2014.
35. Nair, V. and S. Mahadevan, *Randomised controlled study-efficacy of clonidine versus carbamazepine in children with ADHD*. *J Trop Pediatr*, 2009. **55**(2): p. 116-21.
36. Newcorn, J.H., et al., *Extended-release guanfacine hydrochloride in 6–17-year olds with ADHD: a randomised-withdrawal maintenance of efficacy study*. *Journal of Child Psychology and Psychiatry*, 2016. **57**(6): p. 717-728.
37. Kollins, S.H., et al., *Clonidine Extended-Release Tablets as Add-on Therapy to Psychostimulants in Children and Adolescents With ADHD*. *Pediatrics*, 2011. **127**(6): p. e1406-e1413.
38. Blackmer, A.B. and J.A. Feinstein, *Management of Sleep Disorders in Children With Neurodevelopmental Disorders: A Review*. *Pharmacotherapy*, 2016. **36**(1): p. 84-98.
39. Huss, M., W. Chen, and A.G. Ludolph, *Guanfacine Extended Release: A New Pharmacological Treatment Option in Europe*. *Clinical Drug Investigation*, 2016. **36**: p. 1-25.
40. van Geijlswijk, I.M., H.P. Korzilius, and M.G. Smits, *The use of exogenous melatonin in delayed sleep phase disorder: a meta-analysis*. *Sleep*, 2010. **33**(12): p. 1605-14.
41. Walsh, J.K., et al., *Nightly treatment of primary insomnia with eszopiclone for six months: effect on sleep, quality of life, and work limitations*. *Sleep*, 2007. **30**(8): p. 959-68.
42. Roth, T., et al., *An evaluation of the efficacy and safety of eszopiclone over 12 months in patients with chronic primary insomnia*. *Sleep Med*, 2005. **6**(6): p. 487-95.
43. Nowell, P.D., et al., *Benzodiazepines and zolpidem for chronic insomnia: A meta-analysis of treatment efficacy*. *JAMA*, 1997. **278**(24): p. 2170-2177.
44. Vuong, Q.V., M.C. Bowyer, and P.D. Roach, *L-Theanine: properties, synthesis and isolation from tea*. *J Sci Food Agric*, 2011. **91**(11): p. 1931-9.
45. Nobre, A.C., A. Rao, and G.N. Owen, *L-theanine, a natural constituent in tea, and its effect on mental state*. *Asia Pac J Clin Nutr*, 2008. **17 Suppl 1**: p. 167-8.
46. Dulcan, M., *Practice parameters for the assessment and treatment of children, adolescents, and adults with attention-deficit/hyperactivity disorder*. *American Academy of Child and Adolescent Psychiatry*. *J Am Acad Child Adolesc Psychiatry*, 1997. **36**(10 Suppl): p. 85S-121S.
47. Sheehan, D.V., et al., *The Mini-International Neuropsychiatric Interview (M.I.N.I.): the development and validation of a structured diagnostic psychiatric interview for DSM-IV and ICD-10*. *J Clin Psychiatry*, 1998. **59 Suppl 20**: p. 22-33;quiz 34-57.
48. Shaffer, D., et al., *NIMH Diagnostic Interview Schedule for Children Version IV (NIMH DISC-IV): description, differences from previous versions, and reliability of some common diagnoses*. *J Am Acad Child Adolesc Psychiatry*, 2000. **39**(1): p. 28-38.
49. Psychiatry, A.A.o.C.a.A., *Practice parameter for the assessment and treatment of children, adolescent and adults with attention-deficit/hyperactivity disorder*. *J Am Acad Child Adolesc Psychiatry*, 1997. **36**: p. 85S-121S.
50. *Diagnostic and statistical manual of mental disorders, 3rd edition-revised (DSM-III-R)*. Washington, DC:Author. American Psychiatric Association, 1987.
51. *Diagnostic and statistical manual of mental disorders (4th ed., text rev.)*. Washington, DC: Author. American Psychiatric Association, 2000.
52. *Diagnostic and statistical manual of mental disorders (DSM-IV)*. American Psychiatric Association, 1994.
53. Altman, D.G., et al., *The revised CONSORT statement for reporting randomized trials: explanation and elaboration*. *Ann Intern Med*, 2001. **134**(8): p. 663-94.

54. Moher, D., K.F. Schulz, and D.G. Altman, *The CONSORT statement: revised recommendations for improving the quality of reports of parallel-group randomised trials*. *Lancet*, 2001. **357**(9263): p. 1191-4.
55. Downs, S.H. and N. Black, *The feasibility of creating a checklist for the assessment of the methodological quality both of randomised and non-randomised studies of health care interventions*. *J Epidemiol Community Health*, 1998. **52**(6): p. 377-84.
56. Wu, W., L. Zhang, and R. Xue, *Lorazepam or diazepam for convulsive status epilepticus: A meta-analysis*. *J Clin Neurosci*, 2016.
57. O'Connor, S.R., et al., *Failure of a numerical quality assessment scale to identify potential risk of bias in a systematic review: a comparison study*. *BMC Res Notes*, 2015. **8**: p. 224.
58. Pas, H.I., et al., *Efficacy of rehabilitation (lengthening) exercises, platelet-rich plasma injections, and other conservative interventions in acute hamstring injuries: an updated systematic review and meta-analysis*. *Br J Sports Med*, 2015. **49**(18): p. 1197-205.
59. Montane, E., et al., *Reporting randomised clinical trials of analgesics after traumatic or orthopaedic surgery is inadequate: a systematic review*. *BMC Clin Pharmacol*, 2010. **10**: p. 2.
60. Prince, J.B., et al., *Clonidine for sleep disturbances associated with attention-deficit hyperactivity disorder: A systematic chart review of 62 cases*. *Journal of the American Academy of Child & Adolescent Psychiatry*, 1996. **35**(5): p. 599-605.
61. Weiss, M.D., et al., *Sleep Hygiene and Melatonin Treatment for Children and Adolescents With ADHD and Initial Insomnia*. *Journal of the American Academy of Child & Adolescent Psychiatry*, 2006. **45**(5): p. 512-519.
62. Mohammadi, M.R., et al., *Melatonin effects in methylphenidate treated children with attention deficit hyperactivity disorder: a randomized double blind clinical trial*. *Iran J Psychiatry*, 2012. **7**(2): p. 87-92.
63. Tjon Pian Gi, C.V., et al., *Melatonin for treatment of sleeping disorders in children with attention deficit/hyperactivity disorder: A preliminary open label study*. *European Journal of Pediatrics*, 2003. **162**(7-8): p. 554-555.
64. Hoebert, M., et al., *Long-term follow-up of melatonin treatment in children with ADHD and chronic sleep onset insomnia*. *Journal of Pineal Research: Molecular, Biological, Physiological and Clinical Aspects of Melatonin*, 2009. **47**(1): p. 1-7.
65. Ayyash, H.F., et al., *Melatonin for sleep disturbance in children with neurodevelopmental disorders: Prospective observational naturalistic study*. *Expert Review of Neurotherapeutics*, 2015. **15**(6): p. 711-717.
66. Mostafavi, S.A., et al., *Dietary intake, growth and development of children with ADHD in a randomized clinical trial of Ritalin and Melatonin co-administration: Through circadian cycle modification or appetite enhancement?* *Iran J Psychiatry*, 2012. **7**(3): p. 114-9.
67. Sadeh, A. and C. Acebo, *The role of actigraphy in sleep medicine*. *Sleep Med Rev*, 2002. **6**(2): p. 113-24.
68. Kidwell, K.M., et al., *Stimulant Medications and Sleep for Youth With ADHD: A Meta-analysis*. *Pediatrics*, 2015.
69. Tirosh, E., et al., *Effects of methylphenidate on sleep in children with attention-deficient hyperactivity disorder. An activity monitor study*. *Am J Dis Child*, 1993. **147**(12): p. 1313-5.
70. Lee, S.H., et al., *Effect of Methylphenidate on Sleep Parameters in Children with ADHD*. *Psychiatry Investigation*, 2012. **9**(4): p. 384-390.
71. Stein, M.A., M. Weiss, and L. Hlavaty, *ADHD Treatments, Sleep, and Sleep Problems: Complex Associations*. *Neurotherapeutics*, 2012. **9**(3): p. 509-517.

72. Eapen, V. and A.K. Gururaj, *Risperidone Treatment in 12 Children With Developmental Disorders and Attention-Deficit/Hyperactivity Disorder*. Primary Care Companion to The Journal of Clinical Psychiatry, 2005. **7**(5): p. 221-224.
73. Gregory, A.M. and A. Sadeh, *Annual Research Review: Sleep problems in childhood psychiatric disorders--a review of the latest science*. J Child Psychol Psychiatry, 2016. **57**(3): p. 296-317.

Figure 1. PRISMA Flow Diagram summarizing study identification and selection

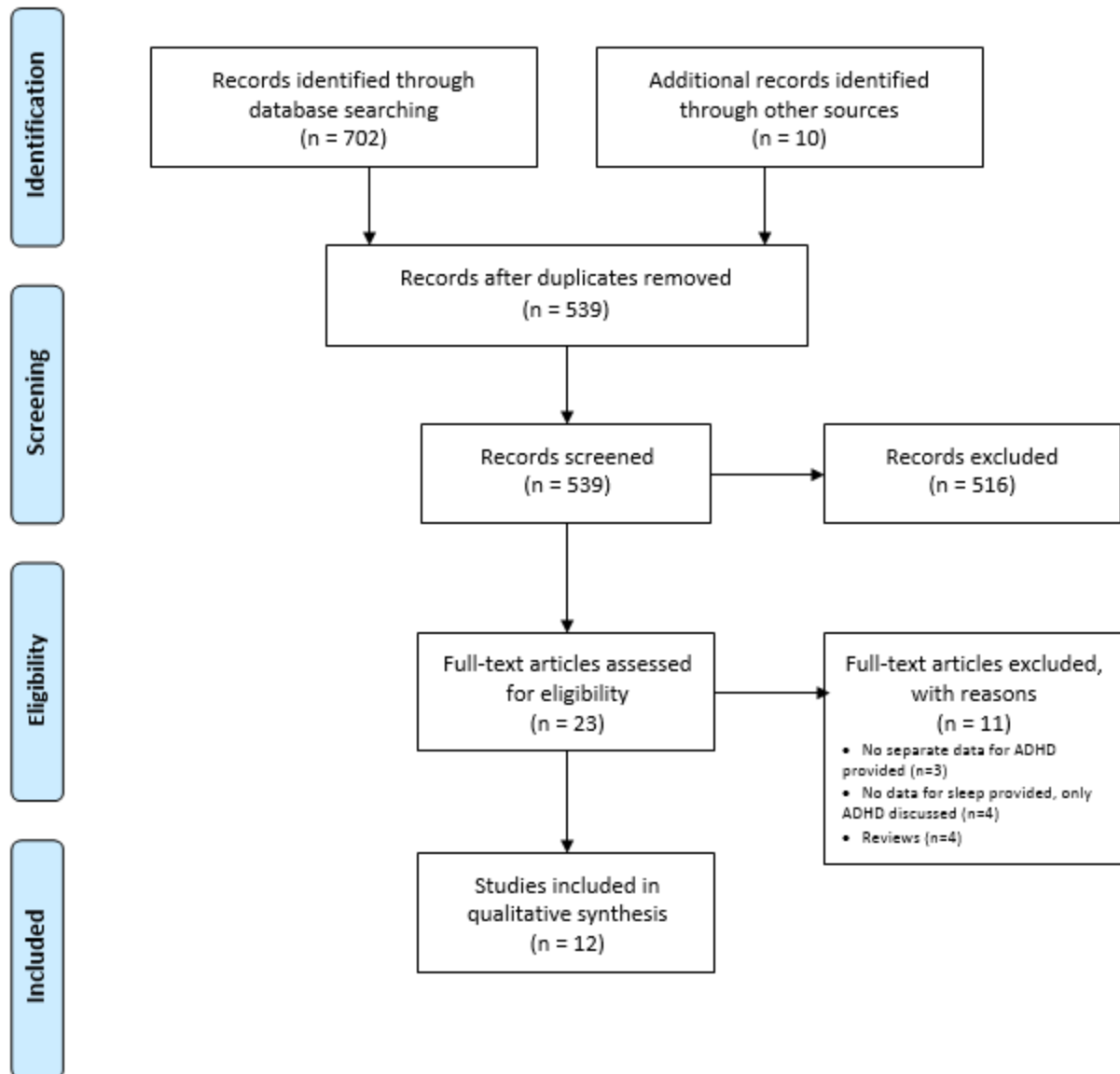


Table 1: Characteristic of included studies

Study No.	Study	Study Design	ADHD Medications	Age	Inclusion criteria	Exclusion Criteria	Drug	Sleep Outcome Measures	Effects on Sleep	Safety
1	Weiss ⁵⁷ 2006 (Canada)	Randomised, double-blind, placebo-controlled crossover trial	Stimulant medications	6-14 years	Children with ADHD, initial insomnia of >60 min, taking stimulant medication with no change in dose for at least 2 months and willing to maintain the current dose for the duration of the protocol	Children in stressful life circumstances that could account for new-onset sleep difficulties or unable to comply with sleep hygiene recommendations	Melatonin/ placebo with sleep hygiene	Parent-completed Somnlogs and actigraph	Mean Somnolog SOL for melatonin was 46.4 min compared to 62.1 min for placebo. More time asleep (15 min) was evident with melatonin than with placebo. Analysis of actigraphic measurement of total time asleep did not yield a significant treatment difference.	Mild to moderate adverse events except migraine which was severe.
2	Van der Heijden ³⁰ 2007 (Netherlands)	Randomised, double-blind, placebo-controlled trial	Medication free	6-12 years	Children diagnosed with ADHD and SOI and written informed consent obtained from parents	IQ<80; pervasive developmental disorder; chronic pain; known disturbed hepatic or renal function; epilepsy; earlier use of melatonin; use of stimulants, neuroleptics, benzodiazepines, clonidine, antidepressants, hypnotics or beta blocker within 4 weeks before enrolment	Melatonin / placebo without sleep hygiene	Actigraphy, DLMO and sleep logs	Sleep onset advanced by 26.9 ± 47.8 min and mean total time asleep increased by 19.8 ± 61.9 min with melatonin compared to delay of sleep onset time by 10.5 ± 37.4 min and decrease of total sleep time of 13.6 ± 50.6 min with placebo. Melatonin group showed significant decrease in sleep latency. Advance in DLMO in melatonin treated group of 44.4 ± 67.9 min.	Mild adverse events, almost similar in both the groups. No discontinuations or withdrawals.
3	Blumer ³² 2009 (United States)	Randomised, double-blind placebo-controlled, parallel-group trial	Psychostimulant	6-17 years	Children diagnosed with ADHD and complained about childhood insomnia and have latency to persistent sleep > 30 minutes and a sleep disturbance not attributed to direct physiologic effect of an abused drug or misused prescription medication.	Other sleep disorder diagnosed with baseline polysomnography; other major psychiatric disorders or a history of substance abuse or dependence; previous adverse experience with zolpidem; use of pharmacologic sleep aids that the patient was unwilling to discontinue; or current use of sertraline	Zolpidem/ placebo without sleep hygiene	Polysomnography, Clinical Global Impression Scales	The latency to persistent sleep mean reduction from baseline was -20.28 minutes with zolpidem and -21.27 minutes with placebo. Analyses of secondary sleep measures at week 4 showed no difference between groups but CGI scores based on interviews indicated favourable effects of zolpidem in adolescent.	62.5% of zolpidem-treated patients and 47.7% of placebo treated patients experienced ≥ 1 TEAE, including dizziness, headache and hallucinations.
4	Lyon ³³ 2011 (Canada)	Randomised, double-blind, placebo-controlled clinical trial	27 on Stimulant medication and 64 were medication free	8-12 years	Boys with ADHD	Psychiatric and medical conditions that (1) could result in an inappropriate diagnosis of ADHD, or (2) were not congruent with exclusion criteria; other psychiatric diagnosis; any chronic medical condition; serious learning disability; or attendance in a behaviour modification program	L-theanine/ placebo without sleep hygiene	Actigraphy and paediatric sleep questionnaire	Increased percentage of time spent in restful sleep in L-theanine compared to placebo group for actigraph-measured sleep efficiency. Fewer bouts of nocturnal activity with L-theanine compared to placebo. Lower number of minutes spent awake after onset of sleep in L-theanine compared to placebo (p<0.058). No significant difference for sleep latency or sleep duration (p>0.05). PSQ data did not significantly correlate with the actigraphic data.	L-theanine at relatively high doses was well tolerated. One minor adverse event of subtle facial tic was noted in L-theanine group, leading to discontinuation.

5	Mohammadi ⁵⁸ 2012 (Iran)	Randomised, double-blind, placebo-controlled clinical trial	Methylphenidate	7-12 years	Children diagnosed with ADHD and did not use any confounding drugs or supplements	Children with history of major prenatal complications; any past or present psychosis; comorbid Tourette syndrome; celiac; phenylketonuria; autism or other persistent developmental disorder; narcotic use	Melatonin/ placebo + Ritalin without sleep hygiene	SDSC sleep questionnaire	Increase in mean total sleep duration (hours) with melatonin from 8 to 8.51 compared to decrease with placebo from 8.77 to 8.27. Decrease in mean sleep latency (min) with melatonin from 23.15 to 17.96 compared to increase with placebo from 21.37 to 26.37.	Mean side-effect scores in melatonin group was 11.35 ± 8.81 and 10.16 ± 9.05 in placebo group.
6	Sangal ³¹ 2014 (USA)	Randomised, double-blind, placebo-controlled trial followed by 2-week single-blind washout period	Amphetamine or Atomoxetine or Dexamphetamine or Lisdexamphetamine or Methylphenidate or Dextroamphetamine/amphetamine	aged 6-11 and 12-17 years	Children diagnosed with ADHD and complaints of insomnia (latency to persistent sleep > 30 min or wake time after sleep > 45 min determined by baseline PSG)	Another primary sleep disorder; other major psychiatric disorders (bipolar I/II disorder, major depression, conduct disorder, generalized anxiety disorder); current alcohol or substance abuse or history of abuse within 3 months of study participation; tobacco and nicotine use within 3 months of study participation	Eszopiclone / Placebo without sleep hygiene	Wrist actigraphy, CGI-severity and child scales such as PDSS	No significant difference between eszopiclone (low-dose or high-dose) groups and placebo group in change of LPS from baseline to week 12. The mean difference for LPS between high dose eszopiclone vs placebo was 7.33 min and for low dose vs placebo was 2.21 min.	TEAEs were reported by 61%, 59.5% and 46% of patients receiving high-dose, low-dose and placebo, respectively. Most common were headache, dysgeusia and dizziness.
		Open-label follow-up study								
7	Wilens ²⁹ 1994 (USA)	Case series	-	4-17 years	Spontaneous or drug-induced sleep disturbances in children with ADHD	Not specified	Clonidine without sleep hygiene	Child and parent responses	Clonidine exerted somnolent properties within 30 minutes and effect persisted until morning.	No unusual adverse effects
8	Prince ⁵⁶ 1996 (USA)	Systematic chart review	Stimulants or tricyclic antidepressants or mood stabilizers or selective serotonin reuptake inhibitors or antipsychotics or antihistamines	4-18 years	Patients being treated with clonidine for ADHD-associated sleep disturbance for at least 1 week	Not specified	Clonidine without sleep hygiene	CGS	Pre-clonidine CGS = 5.1 +/- 0.02; post-clonidine CGS = 2.6 +/- 0.01.	Generally mild adverse effects occurred in 31% (N=19) patients, most common being morning sedation and fatigue; others included worsening sleep, severe nightmares and depression which resolved on discontinuation.

9	Tjon Pian Gi ⁵⁹ 2003 (Netherlands)	Observational study (open label study)	Methylphenidate	Not specified	Children diagnosed with ADHD with prescribed methylphenidate.	Incorrect recording of data	Melatonin without sleep hygiene	Clinical interviews and psychological tests before and after medication.	Short-term effect: improved sleep onset (15-240 min); long-term effect: improved sleep onset (15-64 min) Relapse of insomnia when melatonin forgotten during study (n=2) and after ending study (n=2).	Restless sleep (n=1)
10	Hoebert ⁶⁰ 2009 (Netherlands)	Observational study (long-term follow-up study)	Medication free	6-12 years	Children with diagnosis of ADHD and SOI and a total IQ >80	Same as for Van der Heijden	Melatonin without sleep hygiene	Questionnaire consisting of 19 multiple-choice, numeric, open-ended and scaled questions.	9% discontinued melatonin completely because of total improvement in sleep-onset insomnia. Long-term treatment was effective for sleep problems in 88% of cases.	19 (20.2%) of children experienced adverse events, 10 (52.6%) children had self-limiting adverse events and N=6 (31.6%) had persistent adverse. N=7 (7.4%) parents reported unusual co-morbidity.
11	Rugino ³⁴ 2014 (USA)	Randomised, double-blind, placebo-controlled clinical trial	Medication free	6-12 years	Children with self- or parent-reported concern with sleep duration or quality despite adequate sleep hygiene practices and caffeine restriction,	The body mass index < fifth percentile for age or if the body weight was >80 kg. Clinically significant psychiatric pathology, such as ASD, major depression, etc. Clinically significant medical conditions such as hepatic, neurologic, hemodynamic, cardiac, or renal dysfunction (including clinically significant electrocardiographic findings), or with clinically significant laboratory findings. Obstructive sleep apnea and periodic limb movement.	Guanfacine with sleep hygiene	Polysomnography	Total sleep time, was shorter in guanfacine in contrast to placebo (-57.32, SD = 89.17 vs. +31.32, SD = 59.54 min, p = .005). There are no statistical differences in time onset of persistent sleep and awakening between the two groups (p>0.05).	Somnolence was the most common adverse event with guanfacine (8/11, 73%) as compared to placebo (1/16, 6%).
12	Ayyash ⁶⁵ 2015 (United Kingdom)	Observational study	Psychostimulants	mean age 6.3 ± 1.7 years	Children with diagnosis of ADHD, ASD or ID with severe sleep problems and who had failed to respond to behavioural-management strategies	Children with diagnosis of obstructive sleep apnoea or nocturnal seizures	Melatonin without sleep hygiene	Structured sleep diaries	Melatonin treated children showed improvement in total sleep time (hours/night), sleep-onset delay and number of awakenings (n/night).	No serious event in ADHD group

*Abbreviations: ADHD-attention deficit hyperactivity disorder; ASD-autism spectrum disorder; CGI-clinical global assessment of improvement, CGS-clinical global assessment of sleep severity, DLMO-dim light melatonin onset; ID-intellectual disability; IQ-intelligence quotient; LPS-latency to persistent sleep; PDSS-pediatric daytime sleepiness scale; PSG-polysomnography, PSQ- Paediatric Sleep Questionnaire; SDSC-sleep disturbance scale for children; SOI-sleep onset insomnia; SOL-sleep onset latency; TEAE-treatment-emergent adverse effect

Table 2 CONSORT Scores for RCT

Study	Drugs	Title and abstract (/1)	Introduction (/1)	Methods (/5)	Randomization (/5)	Results (/7)	Discussion (/3)	Other information (/3)	Total (/25)
Weiss⁶¹ 2006	Melatonin	0.5	1	3.5	3	3.5	3	1	15.5
Van der Heijden³⁰ 2007	Melatonin	0.5	1	3.5	3.5	5	3	2	18.5
Mohammadi⁶² 2012	Melatonin	1	1	1	2	2.5	2	1	10.5
Blumer³² 2009	Zolpidem	1	1	4	3	5.5	2	1	17.5
Lyon³³ 2011	L-theanine	1	1	3	2	1.5	0	1	9.5
Sangal³¹ 2014	Eszopiclone	0.5	1	4	4	6	3	3	21.5
Rugino³⁴ 2014	Guanfacine	0.5	1	4	1	6	2	3	17.5

Table 3 Quality Scores for Observational studies

Study	Drugs	Reporting (/11)	External Validity (/10)	Internal Validity (/6)	Power (/1)	Total Quality Score (/28)
Wilens²⁹ 1994	Clonidine	4	0	0	0	4
Prince⁵⁶ 1996	Clonidine	8	3	2	0	13
Tjon Pian Gi⁵⁹ 2013	Melatonin	7	2	2	0	11
Hoebert⁶⁰ 2009	Melatonin	9	7	6	0	22
Ayyash⁶¹ 2015	Melatonin	8	4	2	0	14