

ORIGINAL ARTICLE

ACE Inhibitors and Statins in Adolescents with Type 1 Diabetes

M. Loredana Marcovecchio, M.D., Scott T. Chiesa, Ph.D., Simon Bond, Ph.D., Denis Daneman, M.D., Sarah Dawson, M.Sc., Kim C. Donaghue, M.D., Timothy W. Jones, M.D., Farid H. Mahmud, M.D., Sally M. Marshall, M.D., H. Andrew W. Neil, D.Sc., R. Neil Dalton, Ph.D., John Deanfield, M.D., and David B. Dunger, M.D., for the AdDIT Study Group*

ABSTRACT

BACKGROUND

Among adolescents with type 1 diabetes, rapid increases in albumin excretion during puberty precede the development of microalbuminuria and macroalbuminuria, long-term risk factors for renal and cardiovascular disease. We hypothesized that adolescents with high levels of albumin excretion might benefit from angiotensin-converting-enzyme (ACE) inhibitors and statins, drugs that have not been fully evaluated in adolescents.

METHODS

We screened 4407 adolescents with type 1 diabetes between the ages of 10 and 16 years of age and identified 1287 with values in the upper third of the albumin-to-creatinine ratios; 443 were randomly assigned in a placebo-controlled trial of an ACE inhibitor and a statin with the use of a 2-by-2 factorial design minimizing differences in baseline characteristics such as age, sex, and duration of diabetes. The primary outcome for both interventions was the change in albumin excretion, assessed according to the albumin-to-creatinine ratio calculated from three early-morning urine samples obtained every 6 months over 2 to 4 years, and expressed as the area under the curve. Key secondary outcomes included the development of microalbuminuria, progression of retinopathy, changes in the glomerular filtration rate, lipid levels, and measures of cardiovascular risk (carotid intima-media thickness and levels of high-sensitivity C-reactive protein and asymmetric dimethylarginine).

RESULTS

The primary outcome was not affected by ACE inhibitor therapy, statin therapy, or the combination of the two. The use of an ACE inhibitor was associated with a lower incidence of microalbuminuria than the use of placebo; in the context of negative findings for the primary outcome and statistical analysis plan, this lower incidence was not considered significant (hazard ratio, 0.57; 95% confidence interval, 0.35 to 0.94). Statin use resulted in significant reductions in total, low-density lipoprotein, and non-high-density lipoprotein cholesterol levels, in triglyceride levels, and in the ratio of apolipoprotein B to apolipoprotein A1, whereas neither drug had significant effects on carotid intima-media thickness, other cardiovascular markers, the glomerular filtration rate, or progression of retinopathy. Overall adherence to the drug regimen was 75%, and serious adverse events were similar across the groups.

CONCLUSIONS

The use of an ACE inhibitor and a statin did not change the albumin-to-creatinine ratio over time. (Funded by the Juvenile Diabetes Research Foundation and others; AdDIT ClinicalTrials.gov number, NCT01581476.)

From the Department of Paediatrics (M.L.M., D.B.D.) and the Wellcome Trust—Medical Research Council Institute of Metabolic Science (D.B.D.), University of Cambridge, and the Cambridge Clinical Trials Unit, Cambridge University Hospitals NHS Foundation Trust, Addenbrooke's Hospital (S.B., S.D.), Cambridge, the National Centre for Cardiovascular Prevention and Outcomes, University College London (S.T.C., J.D.), and the WellChild Laboratory, Evelina London Children's Hospital, St. Thomas' Hospital (R.N.D.), London, the Institute of Cellular Medicine (Diabetes), Faculty of Clinical Medical Sciences, Newcastle University, Newcastle upon Tyne (S.M.M.), and the Oxford Centre for Diabetes, Endocrinology and Metabolism, University of Oxford, Oxford (H.A.W.N.) — all in the United Kingdom; the Department of Paediatrics, Hospital for Sick Children and University of Toronto, Toronto (D.D., F.H.M.); and the Institute of Endocrinology and Diabetes, Children's Hospital at Westmead and University of Sydney, Sydney (K.C.D.), and the Telethon Kids Institute, University of Western Australia, Perth (T.W.J.) — both in Australia. Address reprint requests to Dr. Dunger at the University of Cambridge, Department of Paediatrics, Box 116, Level 8, Cambridge Biomedical Campus, Cambridge CB2 0QQ, United Kingdom, or at dbd25@cam.ac.uk.

*A complete list of investigators in the Adolescent Type 1 Diabetes Cardio-Renal Intervention Trial (AdDIT) Study Group is provided in the Supplementary Appendix, available at NEJM.org.

Drs. Marcovecchio and Chiesa and Drs. Deanfield and Dunger contributed equally to this article.

N Engl J Med 2017;377:1733-45.

DOI: 10.1056/NEJMoa1703518

Copyright © 2017 Massachusetts Medical Society.

CHILDREN WITH TYPE 1 DIABETES ARE AT higher risk for long-term renal and cardiovascular disease and death than the general population,^{1,2} and adolescence is a period of risk for the development of complications, since adequate glycemic control is difficult to achieve.³ Rapid increases in albumin excretion during puberty precede the development of microalbuminuria and macroalbuminuria,⁴ and these changes are associated with dyslipidemia, hypertension, increased levels of high-sensitivity C-reactive protein,⁵⁻⁷ increased aortic and carotid intima-media thickness,^{8,9} and altered retinal vasculature.¹⁰ We hypothesized that adolescents with high levels of albumin excretion might benefit from angiotensin-converting-enzyme (ACE) inhibitors and statins. These drugs are commonly used in adults with type 1 diabetes, but they have not been fully evaluated in adolescents.¹¹⁻¹⁵

To identify adolescents with type 1 diabetes who were at increased risk for potential complications, we screened 4407 patients between the ages of 10 and 16 years to determine the presence of increased albumin excretion, which was defined as the upper third of the albumin-to-creatinine ratios on the basis of six early-morning urine samples, after adjustment for age, sex, and duration of diabetes. There is evidence that such adolescents have an increased glomerular filtration rate, dyslipidemia, and increased arterial stiffness, aortic intima-media thickness, and cardiac autonomic dysfunction.^{9,16,17} We subsequently invited the patients with the highest albumin-to-creatinine ratios to participate in the Adolescent Type 1 Diabetes Cardio-Renal Intervention Trial (AddIT) to evaluate the effects of ACE inhibitors and statins.

METHODS

TRIAL DESIGN AND OVERSIGHT

From May 2009 through August 2013, we enrolled patients in this double-blind, randomized, placebo-controlled trial at 32 centers in three countries (the United Kingdom, Canada, and Australia). The trial was designed to explore the effects of two drugs with very different mechanisms of action in this population of adolescents. With the use of a 2-by-2 factorial design, we evaluated a variable dose of an ACE inhibitor (quinapril at a dose of 5 to 10 mg daily), a fixed dose of a statin (atorvastatin at a dose of 10 mg

daily), and combinations of both or placebo in adolescents who were at high risk for complications of diabetes.¹⁸ The lower dose of the ACE inhibitor or placebo (5 mg) was initiated and increased to 10 mg daily after 2 weeks. If patients had side effects, the dose was reduced to 5 mg with a subsequent decision to increase or maintain the dose.

The trial sponsor was the University of Cambridge and Cambridge University Hospitals NHS Foundation Trust. The funders had no role in the design and conduct of the trial or in the collection, management, analysis, or interpretation of the data, but they were given the opportunity to comment on the manuscript before submission. Pfizer donated the active drugs and the placebos for this trial.

The trial conformed to the provisions of the Declaration of Helsinki and was approved by the Cambridge University Hospitals and participating local research ethics committees. Parents of the patients provided written informed consent, and the trial patients were asked to provide their written assent if they were not yet at an age when they could provide consent.

The trial was designed by the principal investigators, and data were collected by the collaborators listed in the Supplementary Appendix, available with the full text of this article at NEJM.org. All the authors vouch for the completeness and accuracy of the data and analyses and for the fidelity of the trial to the protocol and statistical analysis plan, both of which are available at NEJM.org. The trial statisticians analyzed the data, the first and last authors drafted the manuscript, and the steering committee and all authors approved the submission of the manuscript for publication.

TRIAL POPULATION

Adolescents with type 1 diabetes were recruited from a prescreened population of 4407 patients, which included 1287 patients with values in the upper third of the albumin-to-creatinine ratio. We used the World Health Organization definition of an adolescent¹⁹ as a person between 10 and 19 years of age, and we assessed Tanner pubertal stages. Eligible patients were 10 to 16 years of age and had received a diagnosis of diabetes at least 1 year earlier (or a diagnosis within the past year with an undetectable C-peptide level). All the patients had an adjusted albumin-to-creatinine

ratio in the upper third of the screened population.^{4,18} Exclusion criteria were non–type 1 diabetes, pregnancy or unwillingness to adhere to contraceptive advice and pregnancy testing, severe hyperlipidemia or a family history suggesting familial hypercholesterolemia, hypertension unrelated to diabetic nephropathy, previous exposure to the investigational drugs, unwillingness or inability to adhere to the trial protocol, the presence of coexisting conditions (excluding treated hypothyroidism and celiac disease), proliferative retinopathy, and the presence of renal disease that was not associated with type 1 diabetes.¹⁸

TRIAL PROCEDURES

Patients underwent randomization by means of a secure Internet-based service (www.sealedenvelope.com) to one of four regimens: ACE inhibitor plus placebo, statin plus placebo, ACE inhibitor plus statin, or placebo plus placebo. Differences in baseline characteristics were minimized by categorizing patients according to glycated hemoglobin level (<7.5%, 7.5 to 8.5%, or >8.5%), log₁₀ albumin-to-creatinine ratio (1.2 to 1.7 or >1.7), sex, age (11 to 13 years or >13 years), duration of type 1 diabetes (<5 years or ≥5 years), total cholesterol level (<172.5 mg per deciliter or ≥172.5 mg per deciliter), and country.¹⁸

ADHERENCE

Adherence to the trial regimen was assessed according to pill counts of returned unused medications. To assist in counseling to improve adherence, data were also downloaded from the Medication Event Monitoring System (MEMS 6 TrackCap, Aardex). A medication vial cap was fitted with a microprocessor, which recorded the date and time the cap was opened and closed over the course of the trial.²⁰

TRIAL ASSESSMENTS

At the baseline visit, height, weight, waist circumference, blood pressure, Tanner pubertal stage, smoking status, pregnancy tests, and levels of glycated hemoglobin, alanine aminotransferase, urea, and electrolytes were assessed. Nonfasting blood samples were collected for centralized measurements of lipids, including total cholesterol, high-density lipoprotein (HDL) cholesterol, low-density lipoprotein (LDL) cholesterol, and non-HDL cholesterol, triglycerides, apolipoprotein

(apolipoprotein A1 and apolipoprotein B), high-sensitivity C-reactive protein, asymmetric dimethylarginine, creatinine, and cystatin C. Patients attended designated centers for the measurement of the carotid intima–media thickness.

Patients were seen 1 month after randomization and then every 3 months. Every 6 months, three early-morning urine samples and blood samples were obtained for centralized assessment of the albumin-to-creatinine ratio and other markers as measured at baseline. Anonymized digital copies of routine retinal photographs were obtained annually.

Final assessments occurred after a minimum of 2 years and a maximum of 4 years. Assessments were identical to the baseline visit. Throughout the trial, the physicians were encouraged to strive for recommended levels of glycemic control, but targets and methods of insulin delivery were not stipulated in the protocol.

BIOCHEMICAL, CARDIOVASCULAR, AND RETINAL ASSESSMENTS

Local laboratories analyzed glycated hemoglobin levels and safety data, whereas all other biochemical measurements were performed centrally at the WellChild Laboratory, London, as reported previously.¹⁶ Carotid intima–media thickness was measured at 11 specialized vascular centers, with centralized analysis by the Vascular Physiology Unit at University College London, where training and quality control were also supervised. Retinal photographs were assessed centrally at the Centre for Eye Research, Melbourne, Australia (see the Supplementary Methods section in the Supplementary Appendix).

For patients who were 18 years of age or younger, the estimated glomerular filtration rate (GFR) was calculated on the basis of the creatinine level with the use of a modified Schwartz equation derived from our previous studies of the GFR in type 1 diabetes in which we used Inutest as the standard: $0.475 \times \text{height (cm)} / \text{creatinine (mg per deciliter)}$ (Table S1 in the Supplementary Appendix); for patients who were older than 18 years of age, the creatinine-based Chronic Kidney Disease Epidemiology Collaboration (CKD-EPI) equation was used.²¹ Given recent changes in the evaluation of the GFR, we also carried out sensitivity analyses with the estimated GFR calculated by means of the Zappitelli equation in patients who were 18 years of

age or younger: $43.82 \times (1 \div \text{cystatin C})^{0.635} \times (1 \div \text{creatinine})^{0.547} \times 1.35^{\text{height}}$ and the CKD-EPI creatinine–cystatin C equation for patients older than 18 years of age.²²

EFFICACY OUTCOMES

The primary outcome for both factorial comparisons was the change in repeated-measures analysis of the albumin-to-creatinine ratio, which was assessed according to the area under the curve of the \log_{10} albumin-to-creatinine ratio that was standardized according to the length of enrollment in the trial.

Many secondary outcomes in the published protocol¹⁸ were exploratory but considered to be clinically relevant in this population of adolescents. Those outcomes that are reported here assessed the effects of ACE inhibitors on blood pressure, the GFR, and the incidence of microalbuminuria, and the effect of statins on lipid levels, carotid intima–media thickness, and levels of high-sensitivity C-reactive protein and asymmetric dimethylarginine. Microalbuminuria was defined as an albumin-to-creatinine ratio of more than 31.0 mg per gram (3.5 mg per millimole) in male patients or more than 35.4 mg per gram (4 mg per millimole) in female patients in at least two of three early-morning urine samples at any trial visit.³ The effects of both drugs on two-step and three-step progression of retinopathy were also assessed.

SAFETY

Safety was assessed by regular monitoring of plasma urea and electrolyte levels, the estimated GFR, liver function, and changes in height, weight, and body-mass index. Girls who had undergone menarche received counseling on contraception if they were sexually active, as well as pregnancy tests every 6 months.

STATISTICAL ANALYSIS

The sample size was based on repeated-measures analysis of the albumin-to-creatinine ratio in the Oxford Regional Prospective Study cohort, which involved 477 patients of a similar age to that in our cohort, with a mean of 3.5 annual assessments,^{3,4} in which the SD of \log_{10} of the albumin-to-creatinine ratio (area under the curve per year) was 0.28. We determined that at 2 to 4 years of follow-up, a sample size of 400 (100 patients in each group) would provide a power of 93% to detect a 25% lower albumin-to-creatinine ratio

among the patients receiving the ACE inhibitor (ACE inhibitor plus placebo and ACE inhibitor plus statin [200 patients]) than among those receiving placebo (placebo plus placebo and statin plus placebo [200 patients]) or among the patients receiving the statin (statin plus placebo and ACE inhibitor plus statin [200 patients]) than among those receiving placebo (placebo plus placebo and ACE inhibitor plus placebo [200 patients]). In 2012, the initial target population of 500 (based on a dropout rate of 20%) was revised to adjust for a potentially smaller population of patients undergoing randomization, resulting in a target of 440, which provided a power of 92% for the primary factorial comparisons. If an interaction between the drugs was detected, the trial provided a power of 82% to detect a 30% lower albumin-to-creatinine ratio among patients receiving the ACE inhibitor (ACE inhibitor plus placebo) or the statin (statin plus placebo) than among those receiving placebo (placebo plus placebo).

For the primary outcome, the measurements of the albumin-to-creatinine ratio on 3 consecutive days every 6 months were aggregated into the mean of the three \log_{10} -transformed values. Since no further urine samples were obtained at randomization, the values at this time point were interpolated from those obtained at screening and the first visit after randomization. The trapezoidal rule was used to calculate the area under the curve of observations obtained at screening through those obtained at the final visit with the use of calendar dates. The duration of enrollment in the trial was calculated as the difference between randomization and the final visit dates (after 2 to 4 years) or withdrawal from the trial. The area under the curve was divided by the duration of enrollment to provide a one-time standardized value per patient.

The primary analysis of the annualized \log_{10} albumin-to-creatinine ratio area under the curve used an analysis of covariance (ANCOVA) model to estimate main effects of the two treatments after adjustment for the baseline covariates used in the minimization algorithm that assigned treatment, with assessment of potential interaction between trial drugs. A P value of less than 0.05 was considered to indicate statistical significance with no adjustment for multiplicity, given the 2-by-2 trial design. A 1% level of significance ($P < 0.01$) was adopted for the secondary outcomes.

The time until the first incidence of microalbuminuria was analyzed as a time-to-event variable with the use of the calendar date on which microalbuminuria was observed or with censoring at the final visit if microalbuminuria was never observed (patients with microalbuminuria at screening were excluded from this analysis). Kaplan–Meier survival curves were produced and hazard ratios were estimated with the use of a Cox proportional-hazards model, with adjustment for baseline covariates. The same time-to-event analysis and Cox proportional models were used to analyze two-step and three-step progression of retinopathy (see the Supplementary Methods section in the Supplementary Appendix).

Analyses of secondary continuous outcomes were performed with an ANCOVA model to estimate main effects of the two treatments after adjustment for the baseline covariates. For outcomes that were assessed only at baseline and follow-up, the final measurement was used as a dependent variable in the model. Secondary outcomes are provided as means and 95% confidence intervals, with grouping categorized according to trial-drug groups, and pooling observations taken every 6 months (± 3 months).

Sensitivity analyses of the primary outcome were performed to take into account differences in adherence among the patients, according to the duration of treatment with weighting for the percentage of adherence at each visit. The sensitivity analysis was also repeated on the basis of the mean rate of adherence alone. R software was used for all statistical analyses.

RESULTS

PATIENTS, FOLLOW-UP, AND ADHERENCE

A total of 443 adolescents underwent randomization (Fig. S1 in the Supplementary Appendix). The characteristics of the patients at baseline were similar in the four groups (Table 1, and Table S2 in the Supplementary Appendix). At recruitment, 3% of the patients were prepubertal, and these patients and the rest of the cohort progressed normally through puberty during the 2-to-4-year follow-up period. The median follow-up of patients was 2.6 years (range, 0.1 to 4.4), and 154 patients completed the maximum 4 years. A total of 78 patients (18%) withdrew from the trial, with no significant differences in rates of withdrawal among the four groups (Fig. S1 in the Supplementary Appendix). The mean overall

rate of adherence to a trial drug was 75% (Fig. S2 in the Supplementary Appendix).

PRIMARY OUTCOME

There was no significant effect of the ACE inhibitor (effect, -0.01 ; 95% confidence interval [CI], -0.05 to 0.03) or statin (effect, 0.01 ; 95% CI, -0.02 to 0.05) on the area under the curve of the albumin-to-creatinine ratio (Fig. 1). Only the baseline \log_{10} value of the albumin-to-creatinine ratio was associated with the area under the curve of the albumin-to-creatinine ratio during treatment (effect, 0.62 ; 95% CI, 0.41 to 0.82). There was no significant interaction between the two trial drugs (effect, 0.04 ; 95% CI, -0.04 to 0.12). Sensitivity analyses allowing for different levels of drug adherence and duration of treatment did not alter these results (Fig. S3 in the Supplementary Appendix).

SECONDARY OUTCOMES

The use of ACE inhibitors reduced the cumulative incidence of microalbuminuria ($P=0.046$ by the log-rank test) (Fig. 2A), with an adjusted hazard ratio of 0.57 (95% CI, 0.35 to 0.94 ; $P=0.03$), which in the context of negative findings for the primary outcome and statistical analysis plan was not considered significant (Table S3 in the Supplementary Appendix). Variability in the albumin-to-creatinine ratios is shown in Figure S4 in the Supplementary Appendix. The use of the statin had no effect on the incidence of microalbuminuria (adjusted hazard ratio, 0.98 ; 95% CI, 0.61 to 1.58 ; $P=0.93$) (Fig. 2B, and Table S3 in the Supplementary Appendix).

Statin treatment was associated with lower levels of total, LDL, and non-HDL cholesterol, triglycerides, and the ratio of apolipoprotein B to apolipoprotein A1 (Fig. 3, and Table S3 in the Supplementary Appendix), whereas there was no significant effect of the ACE inhibitor on lipid levels, apart from a nonsignificantly higher HDL cholesterol level (Fig. S5 and Table S3 in the Supplementary Appendix).

The use of the ACE inhibitor was associated with nonsignificantly lower systolic blood-pressure z scores, whereas there was no effect of statins on blood pressure (Fig. S6 and Table S3 in the Supplementary Appendix).

There was no significant effect of statins on the estimated GFR (Fig. S7 and Table S3 in the Supplementary Appendix), whereas cystatin C

Table 1. Characteristics of the Patients at Baseline.*

Characteristic	ACE Inhibitor (N=222)	Placebo (N=221)	Statin (N=223)	Placebo (N=220)
Male sex — no. (%)	122 (55.0)	118 (53.4)	122 (54.7)	118 (53.6)
Age — yr	12.4±1.4	12.4±1.4	12.4±1.4	12.4±1.4
Age at diagnosis of diabetes — yr	8.1±3.1	8.2±3.4	8.2±3.3	8.1±3.2
Duration of type 1 diabetes — %				
<5 yr	47.3	48.0	47.5	47.7
5–10 yr	52.7	52.0	52.5	52.3
Blood pressure — mm Hg				
Systolic	116±10.1	116±10.5	116±10.2	116±10.4
Diastolic	67.0±6.3	65.9±6.1	66.7±6.3	66.3±6.1
Glycated hemoglobin level — %	8.3±1.2	8.4±1.2	8.3±1.3	8.3±1.2
Insulin administration — %				
Multiple daily injections	58.6	62.0	58.3	62.3
Continuous subcutaneous infusion	41.4	38.0	41.7	37.7
Renal assessment				
Albumin-to-creatinine ratio†				
Median	10.8	10.7	11.0	10.5
Interquartile range	8.58–14.0	8.50–14.9	8.58–14.4	8.41–14.8
Microalbuminuria — %	0.50	0.90	0.90	0.50
Estimated glomerular filtration rate — ml/ min/1.73 m ²				
Based on creatinine equations	127±24	130±25	128±26	129±23
Based on combined creatinine–cystatin C equations	112±19	111±19	111±20	112±19
Retinopathy — %	13.3	10.6	10.6	13.3
Cardiovascular markers				
Asymmetric dimethylarginine — ng/ml	93.8±15.6	96.0±17.5	95.4±15.6	94.4±17.6
High-sensitivity C-reactive protein — mg/liter	1.03±1.51	1.08±1.59	1.11±1.73	1.0±1.33
Cholesterol level — mg/dl				
Total	172.5±34.4	169.0±34.4	171.7±34.4	169.4±34.8
LDL	91.6±26.3	89.3±24.7	91.6±25.1	89.3±25.5
HDL	60.7±14.7	58.8±14.3	59.6±14.3	59.9±14.7
Non-HDL	111.4±35.2	110.2±33.3	112.1±33.6	109.4±34.4
Triglyceride level — mg/dl	86.8±51.4	95.7±61.1	91.2±54.0	92.1±60.2
Ratio of apolipoprotein B to apolipoprotein A1	0.46±0.13	0.46±0.12	0.47±0.12	0.46±0.13
Carotid intima–media thickness — mm				
Right	0.44±0.05	0.44±0.05	0.44±0.05	0.44±0.05
Left	0.44±0.05	0.44±0.06	0.44±0.05	0.44±0.05

* Plus–minus values are means ±SD. There were no significant differences between the two groups in the characteristics evaluated at baseline. HDL denotes high-density lipoprotein, and LDL low-density lipoprotein. To convert the values for cholesterol to millimoles per liter, multiply by 0.02586. To convert the values for triglycerides to millimoles per liter, multiply by 0.01129. To convert the values for asymmetric dimethylarginine to nanomoles per liter, multiply by 5.

† The urinary albumin-to-creatinine ratio is based on measurement of albumin in milligrams and creatinine in grams. To convert the values for the albumin-to-creatinine ratio to values with creatinine measured in millimoles, multiply by 0.113.

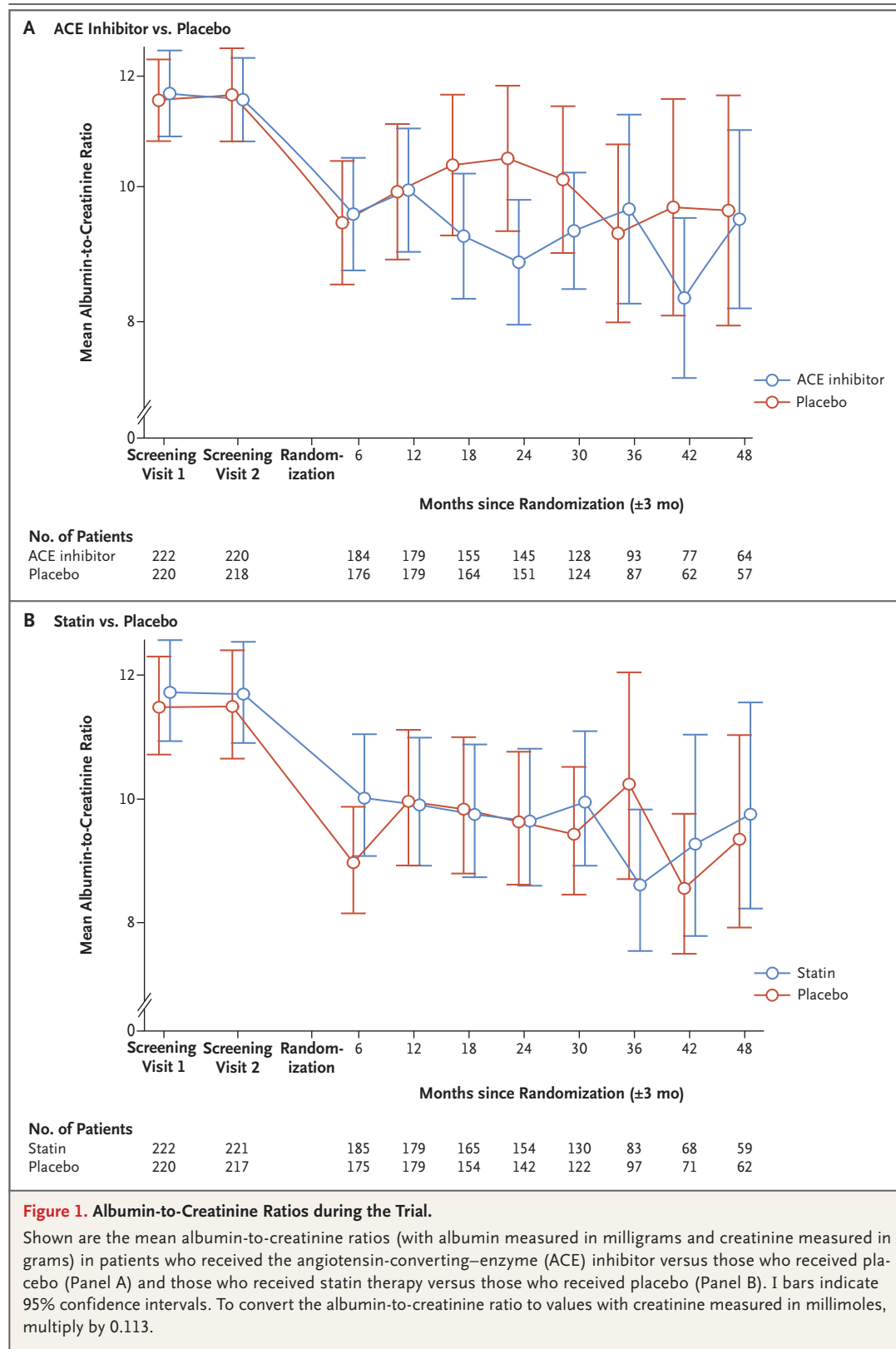
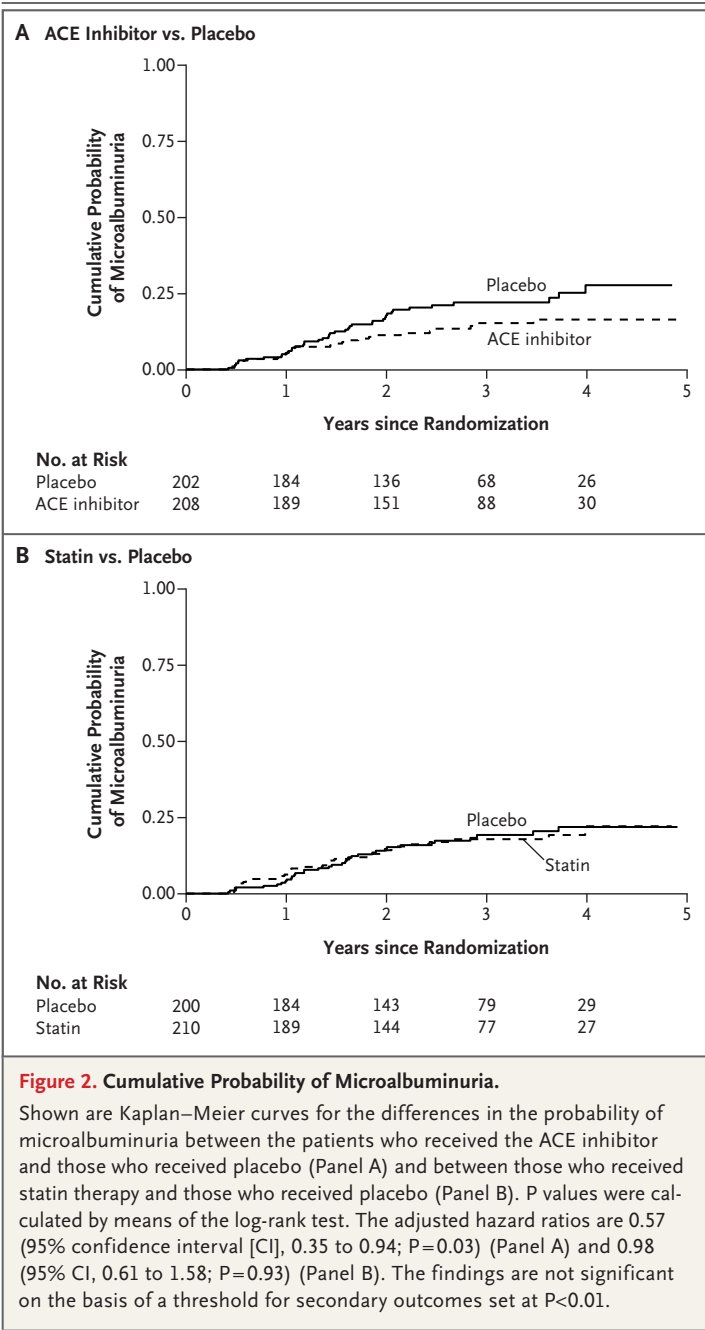


Figure 1. Albumin-to-Creatinine Ratios during the Trial.

Shown are the mean albumin-to-creatinine ratios (with albumin measured in milligrams and creatinine measured in grams) in patients who received the angiotensin-converting-enzyme (ACE) inhibitor versus those who received placebo (Panel A) and those who received statin therapy versus those who received placebo (Panel B). I bars indicate 95% confidence intervals. To convert the albumin-to-creatinine ratio to values with creatinine measured in millimoles, multiply by 0.113.



levels were consistently lower in the ACE-inhibitor group than in the placebo group (Fig. S7 and Table S3 in the Supplementary Appendix). In all the patients in the trial, the level of cystatin C decreased over time, suggesting an increased GFR, and this was confirmed on post hoc analyses of the estimated GFR as calculated by means of the Zappitelli and CKD-EPI creatinine–cystatin C equations, which increased over time, although

Figure 3 (facing page). Lipid Levels in the Statin Group versus the Placebo Group.

Shown are mean values for total cholesterol (Panel A), LDL cholesterol (Panel B), HDL cholesterol (Panel C), triglycerides (Panel D), non-HDL cholesterol (Panel E), and the ratio of apolipoprotein B to apolipoprotein A1 (with both measured in grams per liter) (Panel F) among the patients who received statin therapy and those who received placebo. I bars indicate 95% confidence intervals. To convert the values for cholesterol to millimoles per liter, multiply by 0.02586. To convert the values for triglycerides to millimoles per liter, multiply by 0.01129.

there were no differences between the trial-drug groups (Fig. S7 and Table S3 in the Supplementary Appendix).

There were no significant effects of the ACE inhibitor or statin on carotid intima–media thickness or the asymmetric dimethylarginine level, but statin therapy led to a slight reduction in levels of high-sensitivity C-reactive protein (Fig. S8 and Table S3 in the Supplementary Appendix).

Retinopathy two-step and three-step progression was not affected by the ACE inhibitor (Fig. S9 and Table S3 in the Supplementary Appendix), whereas there was nonsignificantly lower progression with statin therapy (Fig. S9 in the Supplementary Appendix). The glycated hemoglobin level increased over time in all groups (Fig. S10 in the Supplementary Appendix).

SAFETY

Of the 222 patients who were receiving the ACE inhibitor or placebo, 56 (25%) required a dose reduction (to 5 mg daily), largely because of postural hypotension. However, persistent cough was rare, and only 5% of patients continued to receive the lower dose at the end of the trial.

Four serious adverse reactions were deemed to be related to the ACE inhibitor by the chief investigator: a clinically significant decrease in the estimated GFR (in two patients), a hypotensive episode (in one patient), and an elevated level of alanine aminotransferase (in one patient) (Table 2). No serious adverse reactions were deemed to be related to statin therapy. Overall, there were no significant differences in alanine aminotransferase levels in patients who were receiving statin therapy and those who were receiving placebo (Fig. S11 in the Supplementary Appendix).

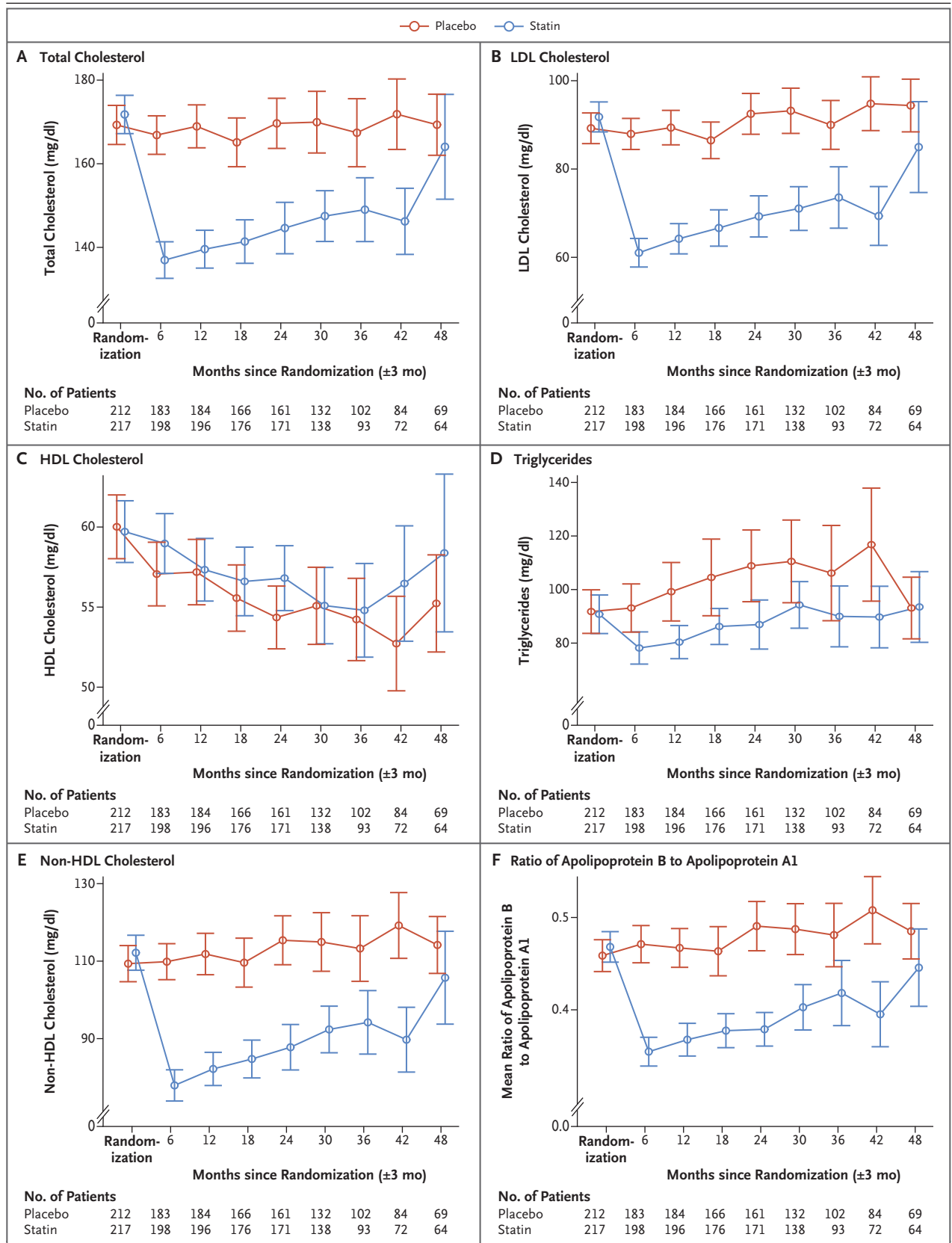


Table 2. Serious Adverse Events.*

Event	ACE Inhibitor plus Placebo (N=111)	ACE Inhibitor plus Statin (N=111)	Placebo plus Placebo (N=109)	Statin plus Placebo (N=112)
	<i>number (percent)</i>			
Gastrointestinal disorder	9 (8.1)	10 (9.0)	11 (10.1)	11 (9.8)
Vomiting†	5 (4.5)	4 (3.6)	4 (3.7)	8 (7.1)
General disorder or administration-site condition	4 (3.6)	0	2 (1.8)	2 (1.8)
Hepatobiliary disorder	0	0	1 (0.9)	1 (0.9)
Immune system disorder	0	0	0	2 (1.8)
Infection or infestation	11 (9.9)	13 (11.7)	14 (12.8)	8 (7.1)
Gastroenteritis†	2 (1.8)	3 (2.7)	6 (5.5)	2 (1.8)
Injury, poisoning, or procedural complication	14 (12.6)	11 (9.9)	10 (9.2)	14 (12.5)
Abnormal result of laboratory test or other medical test	11 (9.9)	17 (15.3)	10 (9.2)	11 (9.8)
Metabolism or nutritional disorder	29 (26.1)	15 (13.5)	12 (11.0)	33 (29.5)
Diabetic ketoacidosis†	17 (15.3)	9 (8.1)	8 (7.3)	18 (16.1)
Hyperglycemia†	4 (3.6)	3 (2.7)	1 (0.9)	7 (6.2)
Musculoskeletal or connective-tissue disorder	1 (0.9)	1 (0.9)	0	0
Nervous system disorder	3 (2.7)	6 (5.4)	2 (1.8)	4 (3.6)
Psychiatric disorder	2 (1.8)	6 (5.4)	6 (5.5)	2 (1.8)
Renal or urinary disorder	0	1 (0.9)	1 (0.9)	0
Respiratory, thoracic, or mediastinal disorder	3 (2.7)	1 (0.9)	0	1 (0.9)
Skin or subcutaneous-tissue disorder	0	0	1 (0.9)	0
Surgical or medical procedure	35 (31.5)	34 (30.6)	29 (26.6)	25 (22.3)
Medical-device change†	17 (15.3)	13 (11.7)	14 (12.8)	12 (10.7)
Vascular disorder	1 (0.9)	1 (0.9)	1 (0.9)	0
Congenital, familial, or genetic disorder	0	0	0	1 (0.9)
Ear or labyrinth disorder	0	0	0	1 (0.9)
Alcohol abuse	2 (1.8)	0	2 (1.8)	2 (1.8)
Reproductive system or breast disorder	1 (0.9)	0	0	0

* Serious adverse events are classified according to the *Medical Dictionary for Regulatory Activities* (MedDRA), version 19.

† For events with a frequency of at least 5% in any one trial group, the MedDRA preferred term is also reported.

No effects of the trial drugs on height, weight, body-mass index, or waist circumference were observed (Table S4 in the Supplementary Appendix). No serious unexpected serious adverse reactions were reported.

DISCUSSION

Our trial assessed the effects of ACE-inhibitor and statin therapy in adolescents with type 1 diabetes, a group of patients who are difficult to

recruit into and retain in clinical trials. The use of these agents over a period of 2 to 4 years did not show any effect on the primary outcome of a change in repeated measures of the albumin-to-creatinine ratio over time. This end point was chosen because previous longitudinal studies had shown that increases in the albumin-to-creatinine ratio during puberty, below the thresholds for microalbuminuria and macroalbuminuria, were associated with risk markers for cardiovascular disease.^{3,5,7}

The trial was adequately powered to observe a 25% lower area under the curve of the albumin-to-creatinine ratio in the treatment groups than in the placebo groups on the basis of published data from studies involving adolescents.⁴ This effect size was conservative, according to previous studies of ACE inhibitors involving adults¹¹ and a few small studies involving children.¹²⁻¹⁴ However, a subsequent study, the Renin-Angiotensin System Study (RASS), questioned the efficacy of interventions with ACE inhibitors in patients who had normal albumin levels,²³ and the effects of statins on renal function in patients with type 1 diabetes are now less certain.²⁴ In contrast to the RASS, we observed lower rates of progression to microalbuminuria with the ACE inhibitor than with placebo, and although this finding was not significant, it may be of clinical relevance, since it was related to reduced variability in the albumin-to-creatinine ratio. Recent data from the Diabetes Control and Complications Trial (DCCT) and the follow-up Epidemiology of Diabetes Interventions and Complications (EDIC) study indicate that even intermittent microalbuminuria may predict cardiovascular risk.²⁵

As expected, the use of statins significantly reduced lipid levels, and results are consistent with those in a recent small trial assessing the safety and efficacy of atorvastatin in improving lipid profiles in 60 adolescents with type 1 diabetes and elevated LDL cholesterol levels.²⁶ Overall LDL cholesterol levels were lower than those reported in diabetes trials involving adults²⁷ and in studies involving children and adolescents with heterozygous familial hypercholesterolemia.²⁸ However, the lipid levels were similar to those in cohorts of adolescents with type 1 diabetes,^{7,29} in which persistently abnormal lipid levels contribute to long-term cardiovascular risk. The use of the ACE inhibitor had little effect on plasma lipid levels, although there were nonsignificantly higher HDL cholesterol levels, as reported previously.³⁰ Statins were associated with only a small reduction in high-sensitivity C-reactive protein levels, but these levels were within the normal range at baseline.³¹ Asymmetric dimethylarginine levels were no different after statin therapy, consistent with previous reports.³²

We selected carotid intima-media thickness as the primary vascular marker in our trial, since it is reproducible, noninvasive, and can offer prognostic information on adverse cardiovascular

outcomes.³³ The thickness is higher in children and adolescents with type 1 diabetes than in age-matched healthy children.⁸ However, in contrast to studies involving adolescents with familial hypercholesterolemia, carotid intima-media thickness was not affected by the use of statins in our trial. One explanation could be that patients with familial hypercholesterolemia have been exposed to high lipid levels since birth and may have greater arterial-wall thickening than age-matched patients with type 1 diabetes.^{28,34}

Despite the absence of any response with respect to the carotid intima-media thickness in our trial, long-term follow-up of the cohort will be important to assess whether intervention during this critical period of adolescence will result in a "legacy effect" similar to that observed after previous trials investigating glycemic and lipid control.^{35,36}

There was no significant effect of the ACE inhibitor on the progression of retinopathy in our trial, in contrast to results from previous studies involving adults who received enalapril.²³ These differences may relate to the relatively early stages of retinopathy in our young population, the duration of treatment, or possibly an ACE-inhibitor class effect. We observed a trend toward lower retinopathy progression with statin treatment, although this was less apparent over time, possibly reflecting lower numbers of patients with data on retinopathy or decreased drug adherence. There are limited and conflicting data on the effect of statins on retinopathy,³⁷ and the findings of our trial may support further exploration.

Rates of withdrawal and adherence could have had an effect in our trial. Whereas dropout rates were similar to those predicted (18% vs. 20%), the rate of adherence (assessed objectively with the use of electronic track caps²⁰) was significantly higher (>70%) than the rates in other adolescent cohorts (50 to 55%).^{38,39} ACE-inhibitor therapy had few side effects, and although the drug dose was reduced on many occasions because of postural hypotension, only 5% of the patients were unable to receive the higher dose by the end of the trial. Chronic cough was not a clinically significant concern, and severe adverse reactions were rare. With regard to statin therapy, only one patient reported any muscle symptoms throughout the trial. Overall complication rates with statin therapy were lower than those reported

in adults with and without diabetes,¹⁵ and they were consistent with the rates in trials involving children and adolescents with heterozygous familial hypercholesterolemia.²⁸ No pregnancies occurred during the trial period, but this potential risk remains an issue for the use of ACE inhibitors and statins in adolescents.

Our trial had certain limitations, including the relatively short duration of exposure to the trial drugs. Predictably, in this population, the mean glycated hemoglobin level increased by approximately 0.5% during the trial period, despite a high rate of insulin-pump therapy (50%). It may be too soon to determine whether drug therapy may have ameliorated the adverse effects of these glycemic exposures. A delayed “legacy effect” of early treatment with ACE inhibitors or statins could still occur, as reported in other trials of glucose-lowering, lipid-lowering, or blood-pressure-lowering interventions,^{35,36,40} in which reduced vascular complications emerged beyond the duration of the original trials. Follow-up of the present cohort will be essential to evaluate the potential benefits of early intervention with ACE inhibitors and statins.

In conclusion, neither ACE-inhibitor nor statin

therapy over a period of 2 to 4 years altered the primary outcome of the change in repeated measures of the albumin-to-creatinine ratio among adolescents with type 1 diabetes.

Supported by the Juvenile Diabetes Research Foundation (JDRF), Diabetes UK, the British Heart Foundation, the JDRF Canadian Clinical Trial Network, the Canadian Diabetes Association, the Heart and Stroke Foundation of Canada, and by a grant (project grant 632521 for retinopathy outcomes) from the National Health and Medical Research Council (Australia).

Dr. Marshall reports receiving grant support from Glaxo-SmithKline; Dr. Dalton, holding equity in SpOtOn Clinical Diagnostics; and Dr. Deanfield, receiving lecture fees from Merck Sharp & Dohme, Amgen, Sanofi-Aventis, Pfizer, Boehringer Ingelheim, Takeda, and Aegerion Pharmaceuticals. No other potential conflict of interest relevant to this article was reported.

Disclosure forms provided by the authors are available with the full text of this article at NEJM.org.

We thank the trial coordinators: Stella Silvester (University of Cambridge, Cambridge, United Kingdom), Yesmino Elia (Hospital for Sick Children, Toronto), and Dr. Charles Czank (Telethon Kids Institute, University of Western Australia, Perth, Australia); Diane Picton, Tracey Stevens, and Mark Wilson (all of the University of Cambridge), Charles Turner and Max Wong (both of the WellChild Laboratory, London), Helen Nguyen (Vascular Physiology Unit, University College London), Alison Pryke (Sydney), and Lauren Hodgson (Centre for Eye Research Australia, Melbourne); all the research nurses involved in the trial and all the sonographers who performed the vascular assessments; the National Institute for Health Research (NIHR) Cambridge Biomedical Research Centre, the NIHR Cambridge Clinical Trials Unit, and the U.K. Clinical Research Network; and all the patients for their involvement and commitment.

REFERENCES

- Livingstone SJ, Levin D, Looker HC, et al. Estimated life expectancy in a Scottish cohort with type 1 diabetes, 2008-2010. *JAMA* 2015;313:37-44.
- Secrest AM, Becker DJ, Kelsey SF, Laporte RE, Orchard TJ. Cause-specific mortality trends in a large population-based cohort with long-standing childhood-onset type 1 diabetes. *Diabetes* 2010;59:3216-22.
- Amin R, Widmer B, Prevost AT, et al. Risk of microalbuminuria and progression to macroalbuminuria in a cohort with childhood onset type 1 diabetes: prospective observational study. *BMJ* 2008;336:697-701.
- Dunger DB, Schwarze CP, Cooper JD, et al. Can we identify adolescents at high risk for nephropathy before the development of microalbuminuria? *Diabet Med* 2007;24:131-6.
- Marcovecchio ML, Dalton RN, Schwarze CP, et al. Ambulatory blood pressure measurements are related to albumin excretion and are predictive for risk of microalbuminuria in young people with type 1 diabetes. *Diabetologia* 2009;52:1173-81.
- Marcovecchio ML, Giannini C, Widmer B, et al. C-reactive protein in relation to the development of microalbuminuria in type 1 diabetes: the Oxford Regional Prospective Study. *Diabetes Care* 2008;31:974-6.
- Marcovecchio ML, Dalton RN, Prevost AT, et al. Prevalence of abnormal lipid profiles and the relationship with the development of microalbuminuria in adolescents with type 1 diabetes. *Diabetes Care* 2009;32:658-63.
- Krantz JS, Mack WJ, Hodis HN, Liu C-R, Liu C-H, Kaufman FR. Early onset of subclinical atherosclerosis in young persons with type 1 diabetes. *J Pediatr* 2004;145:452-7.
- Maftai O, Pena AS, Sullivan T, et al. Early atherosclerosis relates to urinary albumin excretion and cardiovascular risk factors in adolescents with type 1 diabetes: Adolescent type 1 Diabetes cardio-renal Intervention Trial (AddIT). *Diabetes Care* 2014;37:3069-75.
- Sasongko MB, Wong TY, Donaghue KC, et al. Retinal arteriolar tortuosity is associated with retinopathy and early kidney dysfunction in type 1 diabetes. *Am J Ophthalmol* 2012;153(1):176-83.e1.
- ACE Inhibitors in Diabetic Nephropathy Trialist Group. Should all patients with type 1 diabetes mellitus and microalbuminuria receive angiotensin-converting enzyme inhibitors? A meta-analysis of individual patient data. *Ann Intern Med* 2001;134:370-9.
- Cook J, Daneman D, Spino M, Sochett E, Perlman K, Balfe JW. Angiotensin converting enzyme inhibitor therapy to decrease microalbuminuria in normotensive children with insulin-dependent diabetes mellitus. *J Pediatr* 1990;117:39-45.
- Rudberg S, Osterby R, Bangstad HJ, Dahlquist G, Persson B. Effect of angiotensin converting enzyme inhibitor or beta blocker on glomerular structural changes in young microalbuminuric patients with Type I (insulin-dependent) diabetes mellitus. *Diabetologia* 1999;42:589-95.
- Yüksel H, Darcan S, Kabasakal C, Cura A, Mir S, Mavi E. Effect of enalapril on proteinuria, phosphaturia, and calcuria in insulin-dependent diabetes. *Pediatr Nephrol* 1998;12:648-50.
- Cholesterol Treatment Trialists' (CTT) Collaborators. Efficacy of cholesterol-lowering therapy in 18,686 people with diabetes in 14 randomised trials of statins: a meta-analysis. *Lancet* 2008;371:117-25.
- Marcovecchio ML, Woodside J, Jones T, et al. Adolescent type 1 Diabetes cardio-renal Intervention Trial (AddIT): urinary screening and baseline biochemical and

- cardiovascular assessments. *Diabetes Care* 2014;37:805-13.
17. Cho YH, Craig ME, Davis EA, et al. Cardiac autonomic dysfunction is associated with high-risk albumin-to-creatinine ratio in young adolescents with type 1 diabetes in AddIT (Adolescent type 1 Diabetes cardio-renal Interventional Trial). *Diabetes Care* 2015;38:676-81.
18. Adolescent type 1 Diabetes cardio-renal Intervention Trial Research Group. Adolescent type 1 Diabetes cardio-renal Intervention Trial (AddIT). *BMC Pediatr* 2009;9:79.
19. World Health Organization. Recognizing adolescence. 2017 (<http://apps.who.int/adolescent/second-decade/section2/page1/recognizing-adolescence.html>).
20. Vrijens B, Tousset E, Rode R, Bertz R, Mayer S, Urquhart J. Successful projection of the time course of drug concentration in plasma during a 1-year period from electronically compiled dosing-time data used as input to individually parameterized pharmacokinetic models. *J Clin Pharmacol* 2005;45:461-7.
21. Marcovecchio ML, Dalton RN, Turner C, et al. Symmetric dimethylarginine, an endogenous marker of glomerular filtration rate, and the risk for microalbuminuria in young people with type 1 diabetes. *Arch Dis Child* 2010;95:119-24.
22. Bjornstad P, Cherney DZ, Maahs DM. Update on estimation of kidney function in diabetic kidney disease. *Curr Diab Rep* 2015;15:57.
23. Mauer M, Zinman B, Gardiner R, et al. Renal and retinal effects of enalapril and losartan in type 1 diabetes. *N Engl J Med* 2009;361:40-51.
24. Haynes R, Lewis D, Emberson J, et al. Effects of lowering LDL cholesterol on progression of kidney disease. *J Am Soc Nephrol* 2014;25:1825-33.
25. de Boer IH, Gao X, Cleary PA, et al. Albuminuria changes and cardiovascular and renal outcomes in type 1 diabetes: the DCCT/EDIC Study. *Clin J Am Soc Nephrol* 2016;11:1969-77.
26. Canas JA, Ross JL, Taboada MV, et al. A randomized, double blind, placebo-controlled pilot trial of the safety and efficacy of atorvastatin in children with elevated low-density lipoprotein cholesterol (LDL-C) and type 1 diabetes. *Pediatr Diabetes* 2015;16:79-89.
27. Yusuf S, Bosch J, Dagenais G, et al. Cholesterol lowering in intermediate-risk persons without cardiovascular disease. *N Engl J Med* 2016;374:2021-31.
28. Wiegman A, Hutten BA, de Groot E, et al. Efficacy and safety of statin therapy in children with familial hypercholesterolemia: a randomized controlled trial. *JAMA* 2004;292:331-7.
29. Shah AS, Maahs DM, Stafford JM, et al. Predictors of dyslipidemia over time in youth with type 1 diabetes: for the SEARCH for Diabetes in Youth study. *Diabetes Care* 2017;40:607-13.
30. Bakris GL, Smith AC, Richardson DJ, et al. Impact of an ACE inhibitor and calcium antagonist on microalbuminuria and lipid subfractions in type 2 diabetes: a randomised, multi-centre pilot study. *J Hum Hypertens* 2002;16:185-91.
31. Pepys MB, Hirschfield GM. C-reactive protein: a critical update. *J Clin Invest* 2003;111:1805-12.
32. Serban C, Sahebkar A, Ursoniu S, et al. A systematic review and meta-analysis of the effect of statins on plasma asymmetric dimethylarginine concentrations. *Sci Rep* 2015;5:9902.
33. Lorenz MW, Markus HS, Bots ML, Rosvall M, Sitzer M. Prediction of clinical cardiovascular events with carotid intima-media thickness: a systematic review and meta-analysis. *Circulation* 2007;115:459-67.
34. Järvisalo MJ, Jartti L, Nääntö-Salonen K, et al. Increased aortic intima-media thickness: a marker of preclinical atherosclerosis in high-risk children. *Circulation* 2001;104:2943-7.
35. Ford I, Murray H, Packard CJ, Shepherd J, Macfarlane PW, Cobbe SM. Long-term follow-up of the West of Scotland Coronary Prevention Study. *N Engl J Med* 2007;357:1477-86.
36. Holman RR, Paul SK, Bethel MA, Matthews DR, Neil HAW. 10-year follow-up of intensive glucose control in type 2 diabetes. *N Engl J Med* 2008;359:1577-89.
37. Ioannidou E, Tseriotis VSTK, Tziomalos K. Role of lipid-lowering agents in the management of diabetic retinopathy. *World J Diabetes* 2017;8:1-6.
38. Ellis DA, Naar-King S, Frey M, Templin T, Rowland M, Cakan N. Multisystemic treatment of poorly controlled type 1 diabetes: effects on medical resource utilization. *J Pediatr Psychol* 2005;30:656-66.
39. Rapoff MA, Barnard MU. Compliance with pediatric medical regimens. In: Cramer JA, Spilker B, eds. *Patient compliance in medical practice and clinical trials*. New York: Raven Press, 1991:73-98.
40. Zoungas S, Chalmers J, Neal B, et al. Follow-up of blood-pressure lowering and glucose control in type 2 diabetes. *N Engl J Med* 2014;371:1392-406.

Copyright © 2017 Massachusetts Medical Society.

SPECIALTIES AND TOPICS AT NEJM.ORG

Specialty pages at the *Journal's* website (NEJM.org) feature articles in cardiology, endocrinology, genetics, infectious disease, nephrology, pediatrics, and many other medical specialties. These pages, along with collections of articles on clinical and nonclinical topics, offer links to interactive and multimedia content and feature recently published articles as well as material from the NEJM archive (1812–1989).